

# Welcome!

The meeting will start soon.

**To start, use the chat feature to tell us your name and how you heard about this workshop.**

The screenshot displays a Zoom meeting interface. On the left, a presentation slide with a green background features the text: "Improvements to Town Field", "Virtual Public Meeting 3", and "6 March 2024". A small video thumbnail of a person is visible in the top right corner of the slide area. On the right, a chat window is open, titled "Chat" with the instruction "Add comments and your answers to our questions here!". Below the instruction are three input fields, each preceded by a person icon. At the bottom of the chat window, it says "We're recording!". At the bottom of the Zoom interface, a control bar contains icons for "Audio Settings", "Chat" (highlighted with a yellow circle), "Raise Hand", "Q&A", and a "Leave" button.

# Improvements to Town Field

Virtual Public Meeting 3  
6 March 2024

## Chat

Add comments and your answers to our questions here!

Three input fields for chat messages, each preceded by a person icon.

**We're recording!**

Audio Settings ^

Chat

Raise Hand

Q&A

Leave



# Improvements to Town Field

Fields Corner, Dorchester  
Boston Parks and Recreation

**Virtual Public Meeting 3**  
6 March, 2024



City of Boston  
Parks and Recreation

Agency  
Landscape + Planning



# MEETING RECORDING

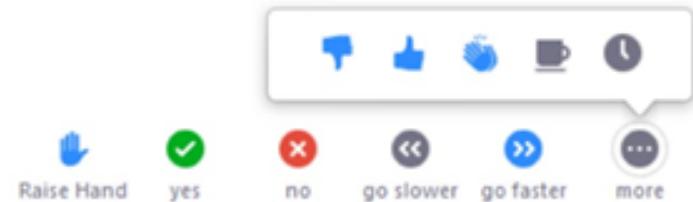
**This meeting is being  
recorded!**

- The Boston Parks and Recreation Department will be recording the meeting and posting to our project webpage for those who are unable to attend the Zoom meeting live.
- It is possible that participants may also be recording the meeting with their phones cameras or other devices. If you do not wish to be recorded during this meeting, please keep your microphone muted and camera off.
- Please share with your neighbors and friends,  
**[boston.gov/town-field](https://boston.gov/town-field)**

# ZOOM TIPS

## During the presentation:

  **Via web:**  
Turn video on/off



To use these non-verbal options click on participants (bottom of screen); these options will pop up in side bar

## During the Q&A:



### Joining via phone?

Use \*9 to raise hand to ask for audio / video permission to ask questions or provide comments



### Via web:

Chat to ask questions / comments or provide responses to poll questions



Raise hand to ask for audio / video permission to ask questions or provide comments



# TONIGHT'S **AGENDA**

## Project Overview (5 mins)

Introductions + Team

Project Schedule + Process

## Project Guiding Principles (5 mins)

Project Guiding Principles

What We've Heard

## A Refined Park Vision (20 mins)

Refined Concept Plan + Feedback

## Discussion (60 mins)

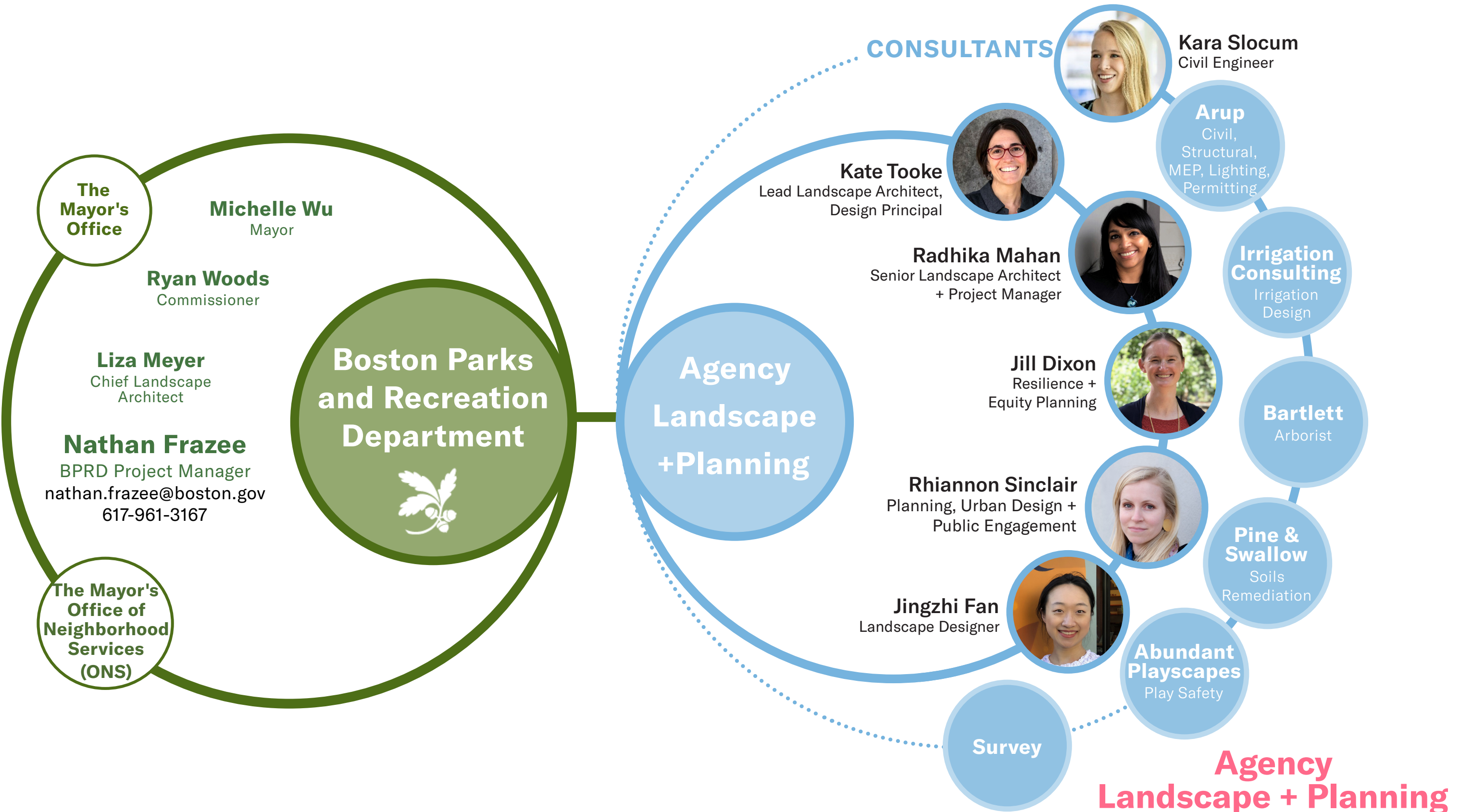


An aerial photograph of a university campus, overlaid with a semi-transparent green filter. The image shows a dense cluster of buildings, including several large, multi-story structures. In the center, there is a large, open area that appears to be a sports field or stadium, with a baseball diamond visible. The surrounding area is filled with trees and smaller buildings, suggesting a well-established campus. The overall scene is captured from a high angle, providing a comprehensive view of the campus layout.

# Project Overview



# INTRODUCTIONS + TEAM



**Boston Parks  
and Recreation  
Department**

**The  
Mayor's  
Office**

**Michelle Wu**  
Mayor

**Ryan Woods**  
Commissioner

**Liza Meyer**  
Chief Landscape  
Architect

**Nathan Frazee**  
BPRD Project Manager  
nathan.frazee@boston.gov  
617-961-3167

**The Mayor's  
Office of  
Neighborhood  
Services  
(ONS)**

**Agency  
Landscape  
+Planning**

**CONSULTANTS**



**Kara Slocum**  
Civil Engineer

**Arup**  
Civil,  
Structural,  
MEP, Lighting,  
Permitting



**Kate Tooke**  
Lead Landscape Architect,  
Design Principal



**Radhika Mahan**  
Senior Landscape Architect  
+ Project Manager

**Irrigation  
Consulting**  
Irrigation  
Design



**Jill Dixon**  
Resilience +  
Equity Planning

**Bartlett**  
Arborist



**Rhiannon Sinclair**  
Planning, Urban Design +  
Public Engagement

**Pine &  
Swallow**  
Soils  
Remediation



**Jingzhi Fan**  
Landscape Designer

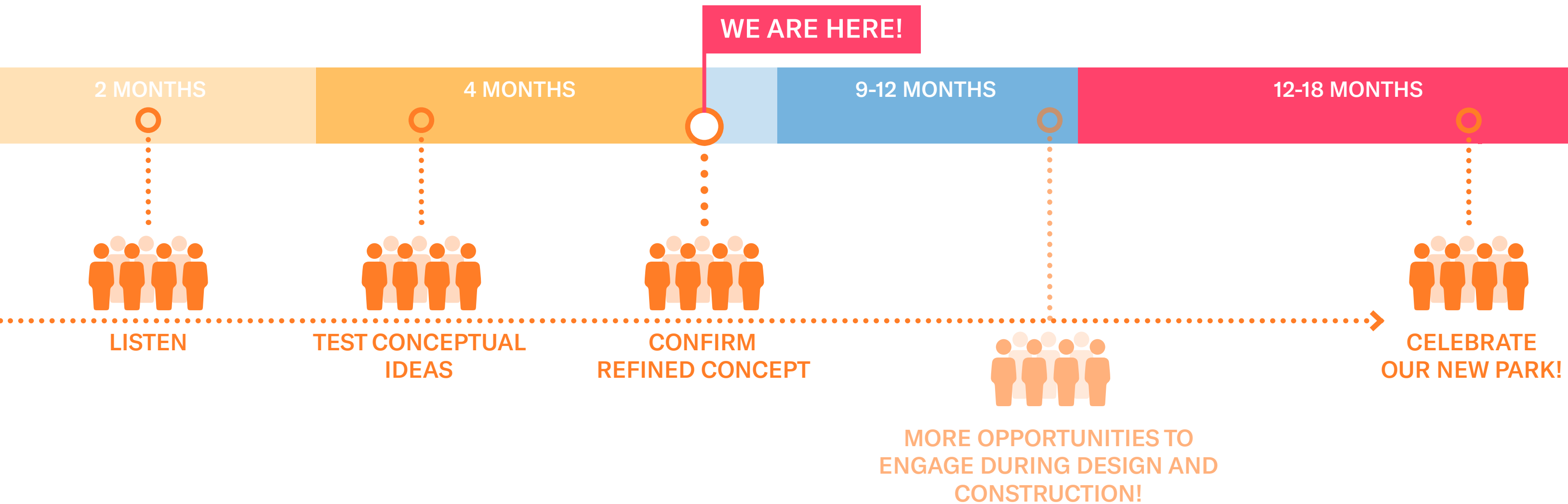
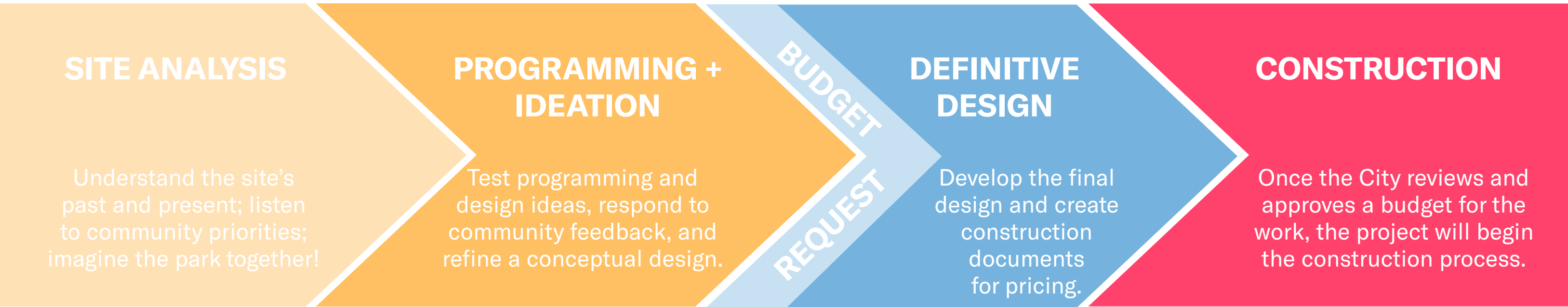
**Abundant  
Playscapes**  
Play Safety

**Survey**

**Agency  
Landscape + Planning**

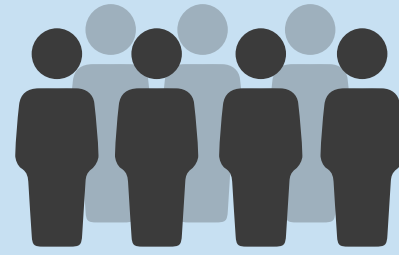
Prime Firm, Landscape Architecture,  
Planning + Community Engagement

# PROJECT SCHEDULE + OVERVIEW





# Community Input



# City of Boston Priorities

- Expanding Walkable Access to Parks
- Addressing Equity
- Climate Resilience
- Health
- Community Building

# Parks & Recreation Goals

- Accessible and Available to All
- Diverse, Balanced, and Efficient Mix of Uses
- Meaningful and Inclusive Community Engagement
- Adaptive and Resilient Landscapes Promote Connections

# Safety & Regulatory Guidelines



INNOVATIVE DESIGN + QUALITY CONSTRUCTION

# Great Boston Parks





# TONIGHT'S **GOALS!**

**The City and the design team are here to listen.**

**We'll share some information, ask a lot of questions, and look forward to your input.**

**We hope that you:**

- Learn more about what the community values about Town Field.
- Express your thoughts on what works in our design concept, and what needs improvement.
- Share your excitement about the future of Town Field with others who might want to express their opinions.

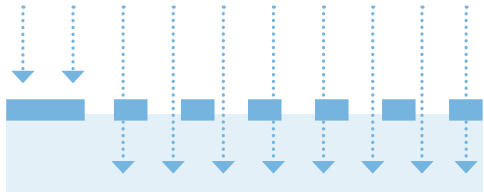
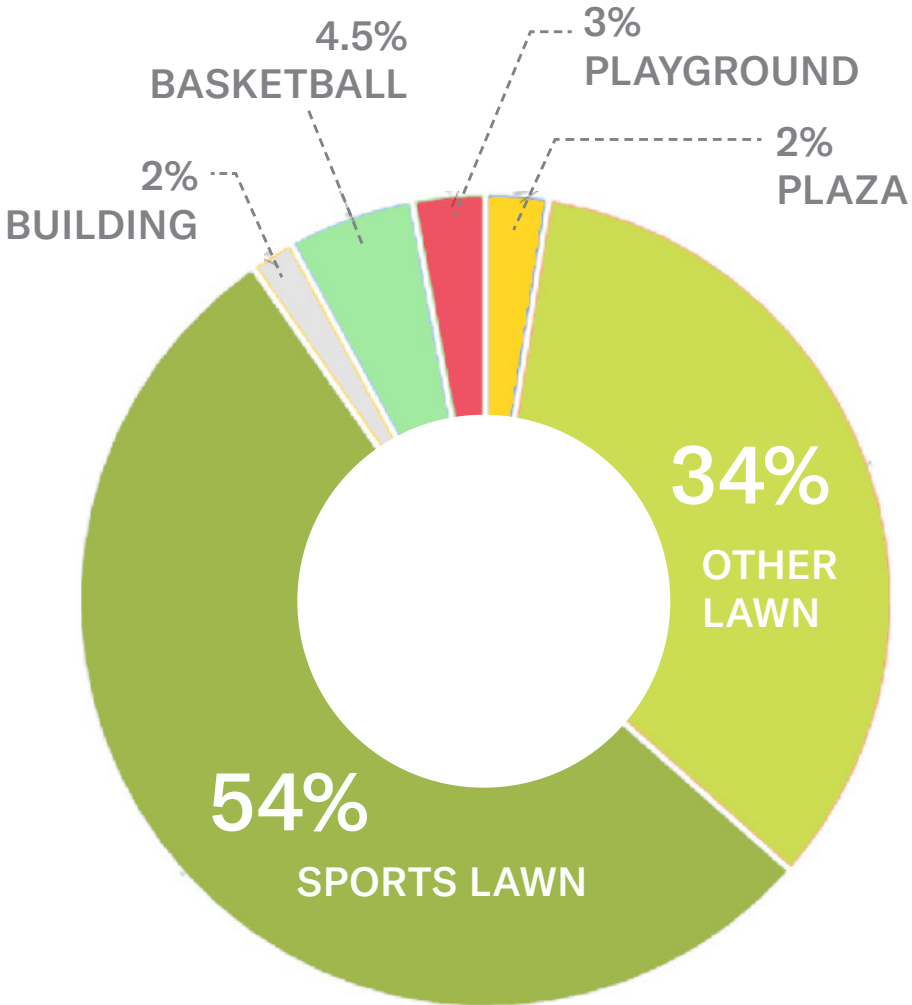




# **Project Guiding Principles**



# TOWN FIELD TODAY: AN ACTIVE AND BELOVED PARK



**82% PERVIOUS**



**16% CANOPY COVERAGE**



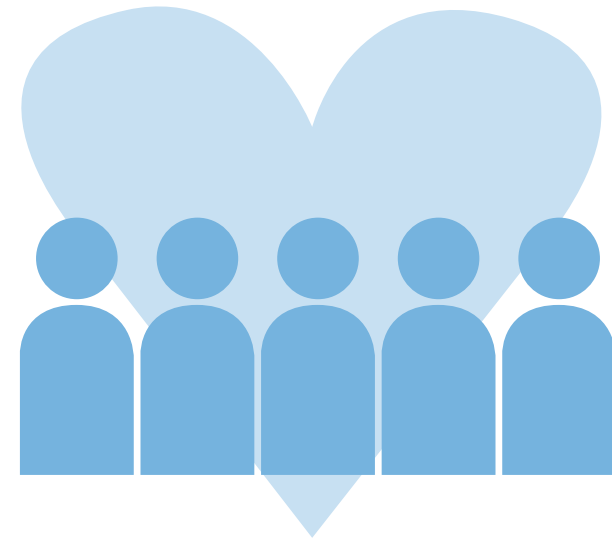
# PROJECT **GUIDING PRINCIPLES**



## **A Diversity of Active Field Recreation Opportunities**

This is a recreational destination for all of Dorchester.

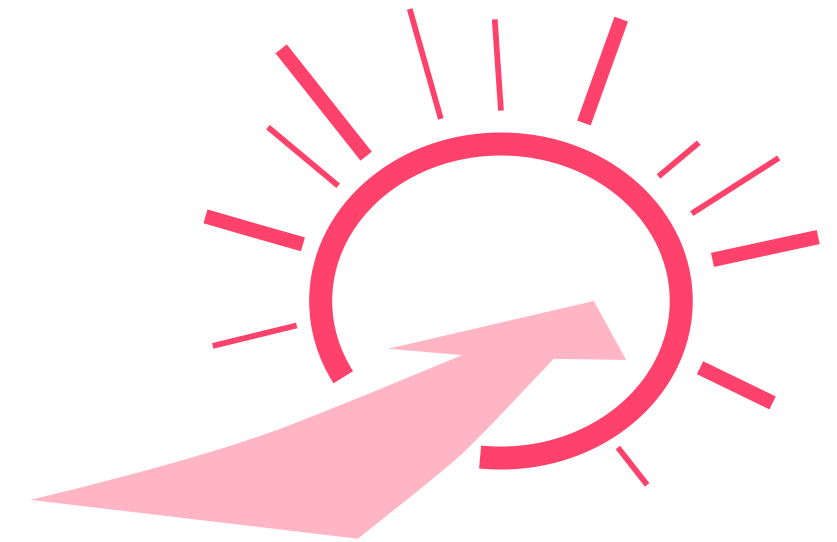
What sports fields and courts best support the needs of this community?



## **The Heart of the Fields Corner Community**

The neighborhood already celebrates, protests and socializes in Town Field.

How can the park better support event and everyday use?



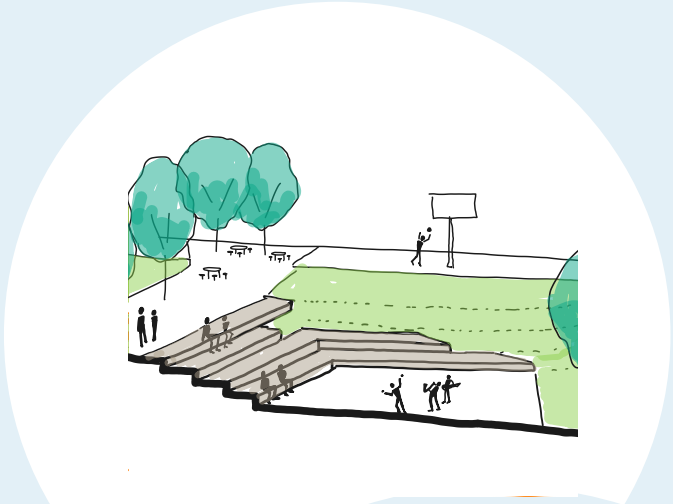
## **A Welcoming and Connected Park Experience**

Great parks have great edges and entries.

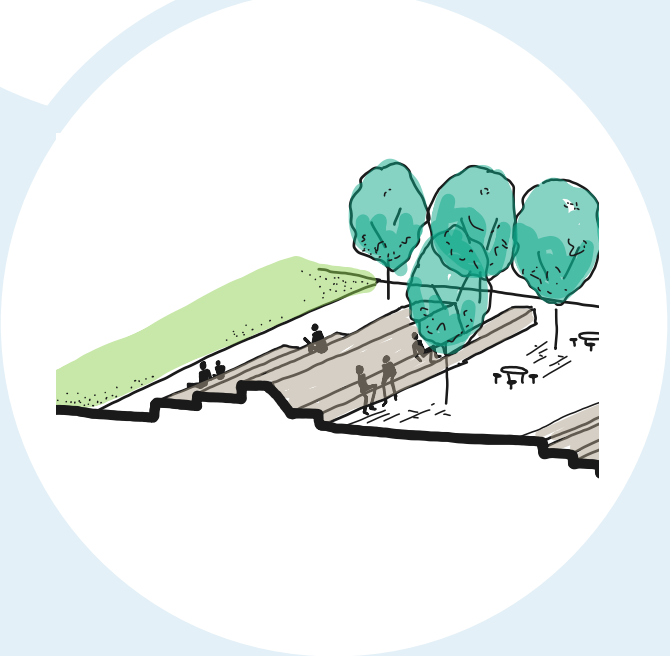
How do we make sure it feels comfortable to arrive at and navigate through Town Field?

# WHAT WE HEARD

*“Is it possible to incorporate more **nature in the space**, even if it’s a long a jog path [that includes] a diversity of plants?”*



Most people generally preferred integrating **seating along hillsides and slopes.**



*“Maybe a little **“nature” area** where someone could read, or meditate? I would just love to see more greenery there.”*



## Social Activities and Events

Many participants advocated for a **multiuse, accessible space** that integrates **public art** as well as more **natural elements.**

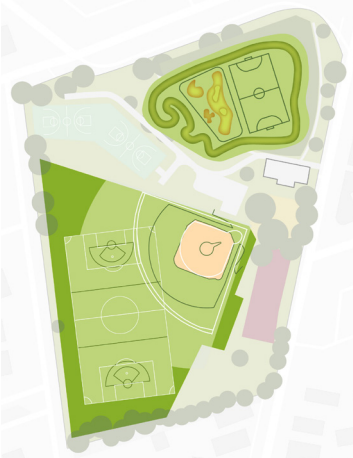
*How should **public art** be incorporated to ground community artists in the space??*



# WHAT WE HEARD

Many participants preferred to keep dedicated fields for **softball and baseball.**

*“My primary concern is that if these fields are redone to make sure that the field is primarily open use by the community and not rented constantly for private leagues.”*

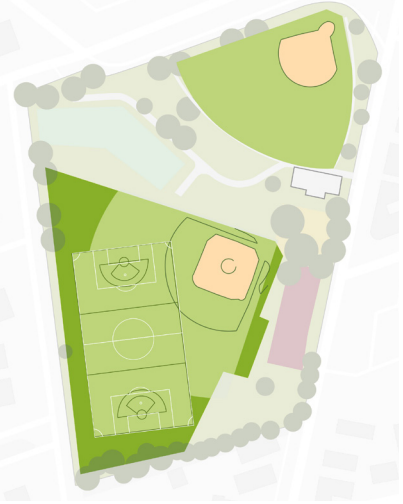


People liked the option of having of **many activities.** Suggestions included:



## Playing and Watching Sports

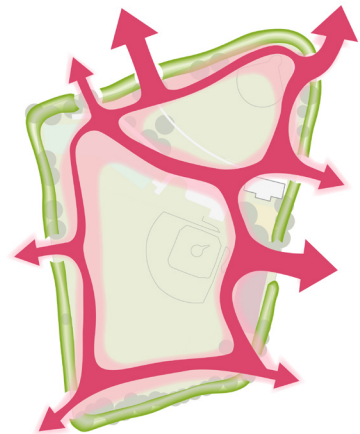
*“I have mixed feelings about combining the baseball fields and softball fields. There is no dedicated field for softball leagues here. Softball is an **afterthought** and baseball seems to be the priority.”*



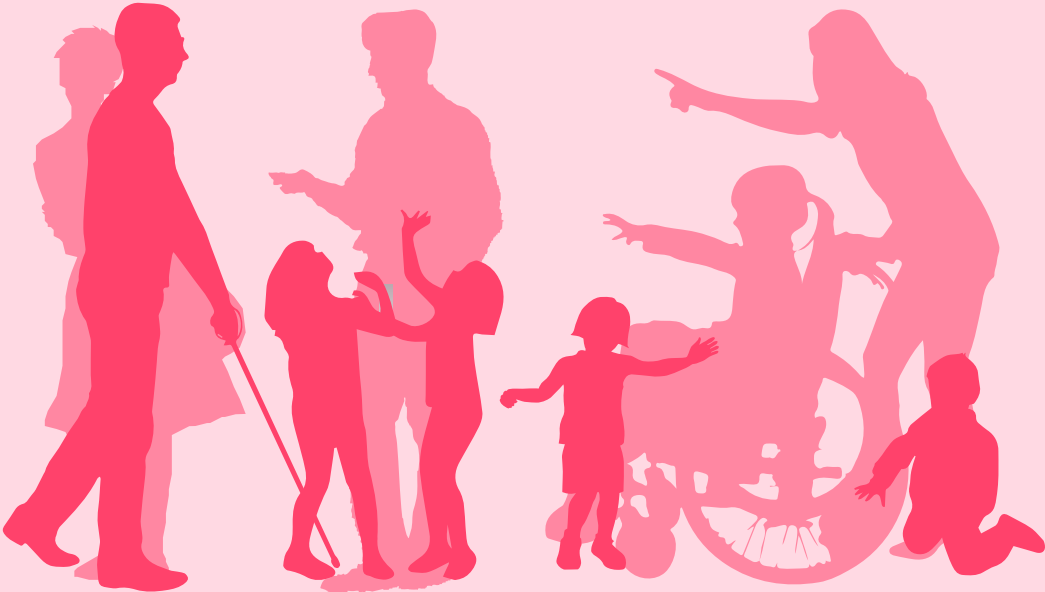
-  *Tennis/Pickleball*
-  *Lawn games*
-  *Pickup soccer/Futsal*
-  *Outdoor performance*
-  *Flag football*
-  *Ice skating*

# WHAT WE HEARD

A majority of participants were excited about a walking path that loops around the park.

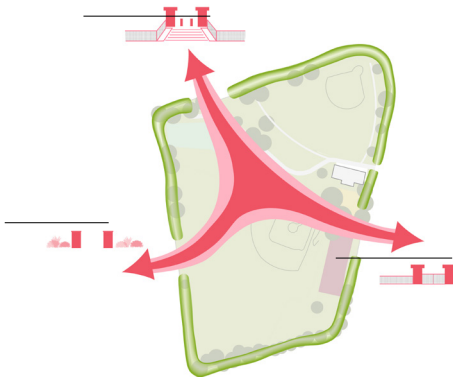


*“I would love to increase the entryways while also keeping the **stone features** there now.”*



## Park Edges, Arrival and Circulation

*“For **events**, it can be challenging if there are fewer entries, so increased entries are very helpful, especially for loading and off loading.”*



Many people advocated for a few new entryways.

*“I think the path is really important to allow folks to walk and engage [with aspects of the park] **besides sports.**”*

*“I am interested in the loop, but not sure about it if it **limits activity options.**”*

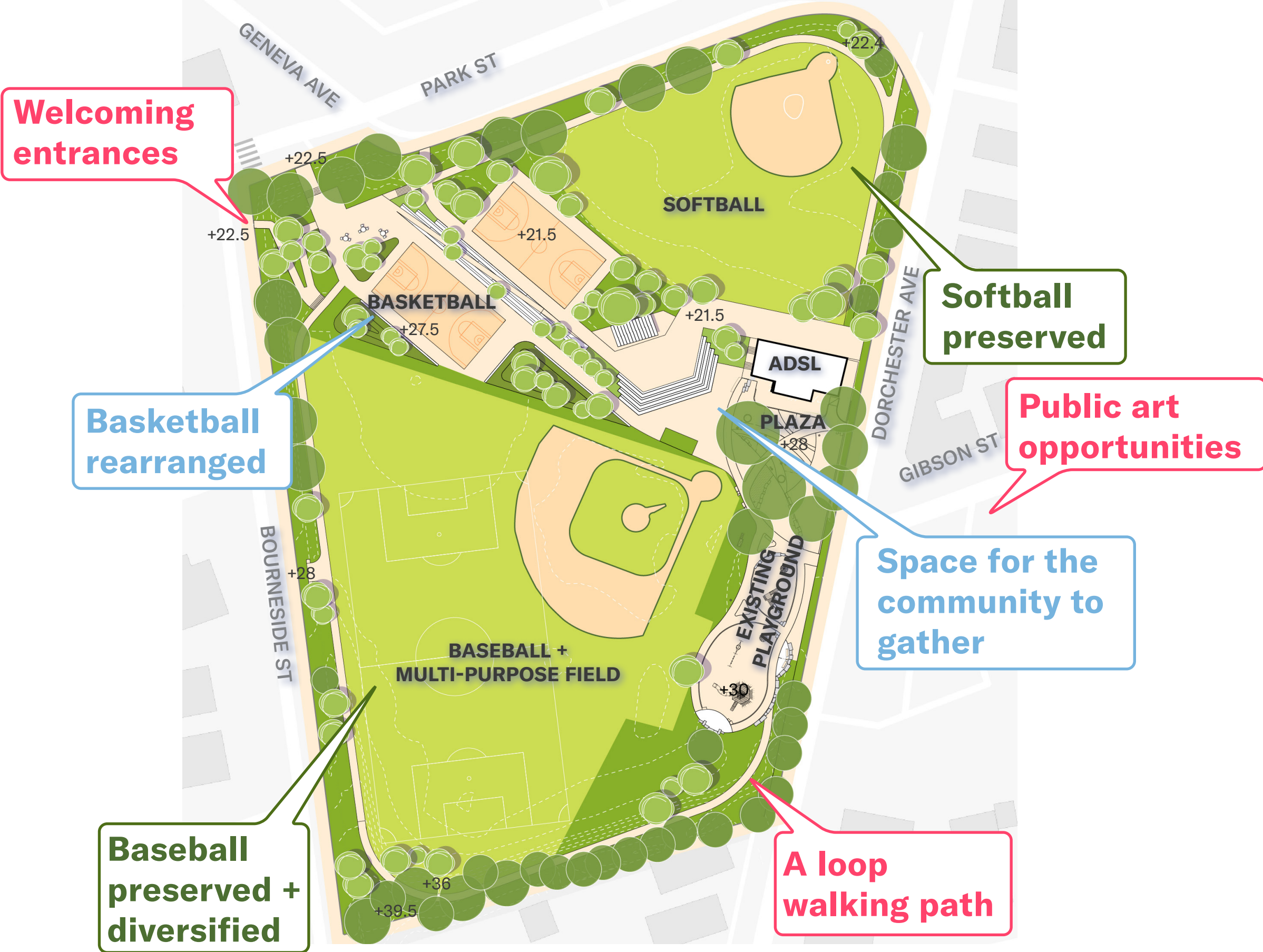


An aerial photograph of a city park, overlaid with a semi-transparent green filter. The park features two baseball fields, one in the upper center and one in the lower center, surrounded by trees and walkways. The surrounding urban area is filled with residential and commercial buildings. The text "A Refined Park Vision" is centered in the lower half of the image in a bold, white, sans-serif font.

# A Refined Park Vision

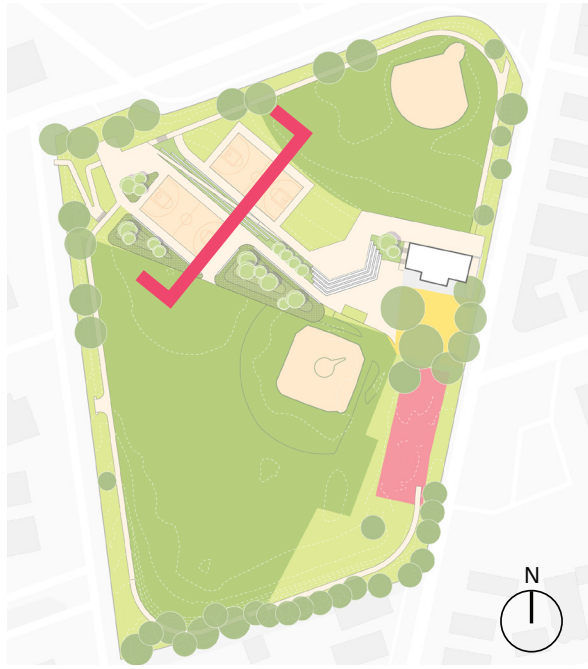


# TOWN FIELD | A REFINED PARK VISION





# TOWN FIELD | A GREAT PLACE TO WATCH A GAME



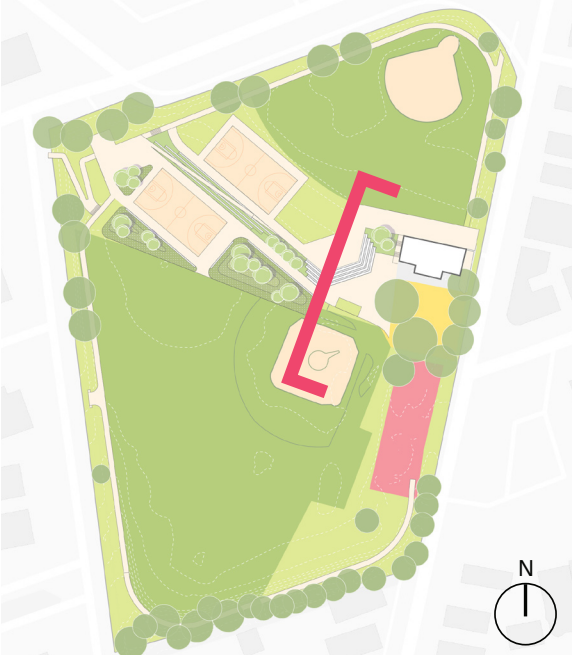


# TOWN FIELD | A GREAT PLACE TO WATCH A GAME





# TOWN FIELD | AN ACTIVE & CONNECTED COMMUNITY PARK





# TOWN FIELD | AN ACTIVE & CONNECTED COMMUNITY PARK





# TOWN FIELD | A WELCOMING SPACE FOR PUBLIC ART



“Wilderness Project”, Carson Beach, Boston



LoPresti Park Installation, East Boston



School of Fine Arts, Fenway



Mural by Tran Vu, Dorchester



# MAD LIB | MY DAY AT TOWN FIELD!

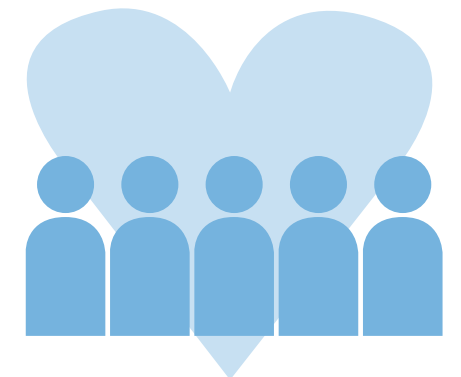


*“I would visit Town Field with (person / people). I’d like to go to the (a place in the park) **first and would be excited to do** (an activity) **here.** I’m going to feel (an emotion) **here.***

*In thinking about the future of Town Field, I also wonder about (statement or question) .”*

**Share your answers in the chat!**

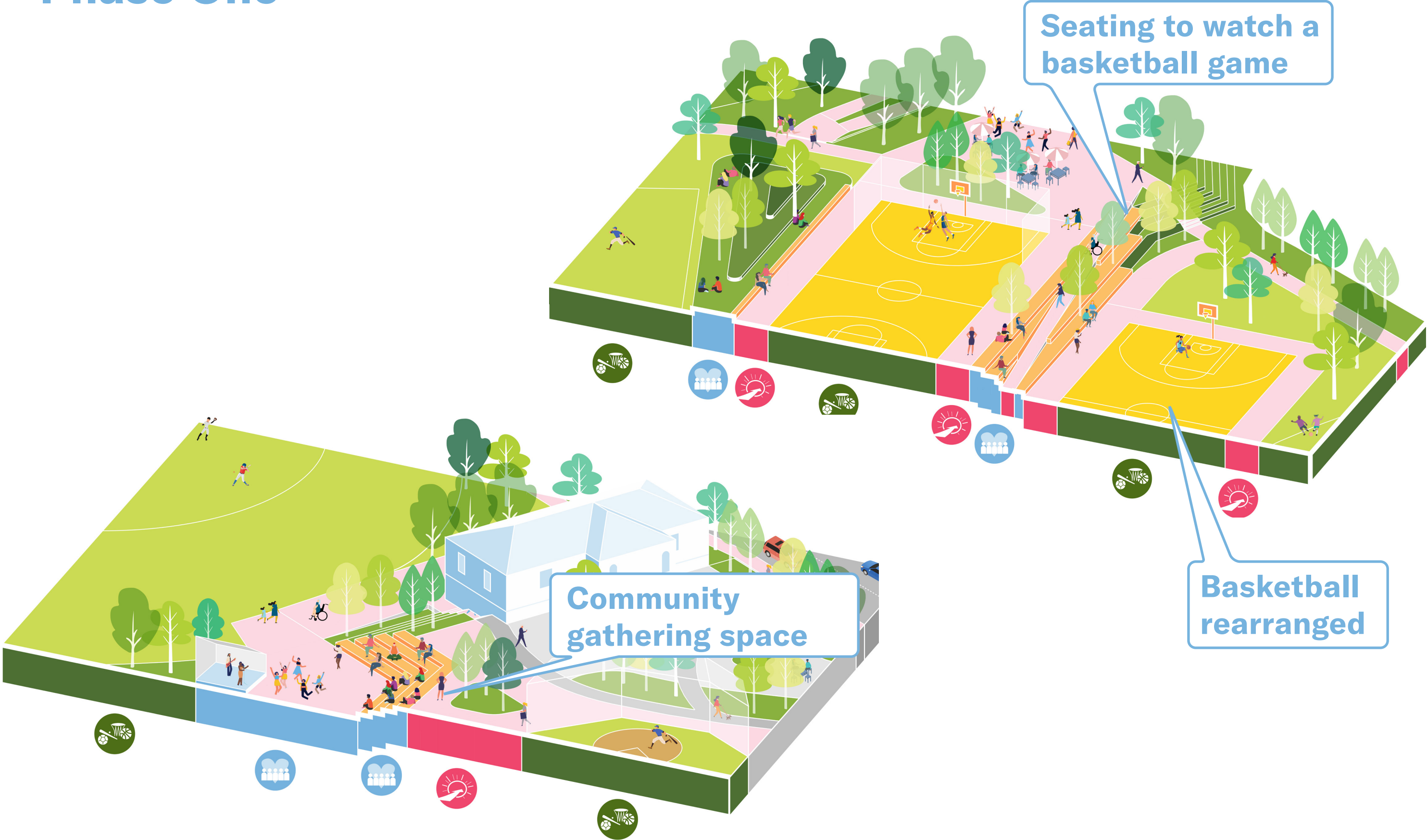






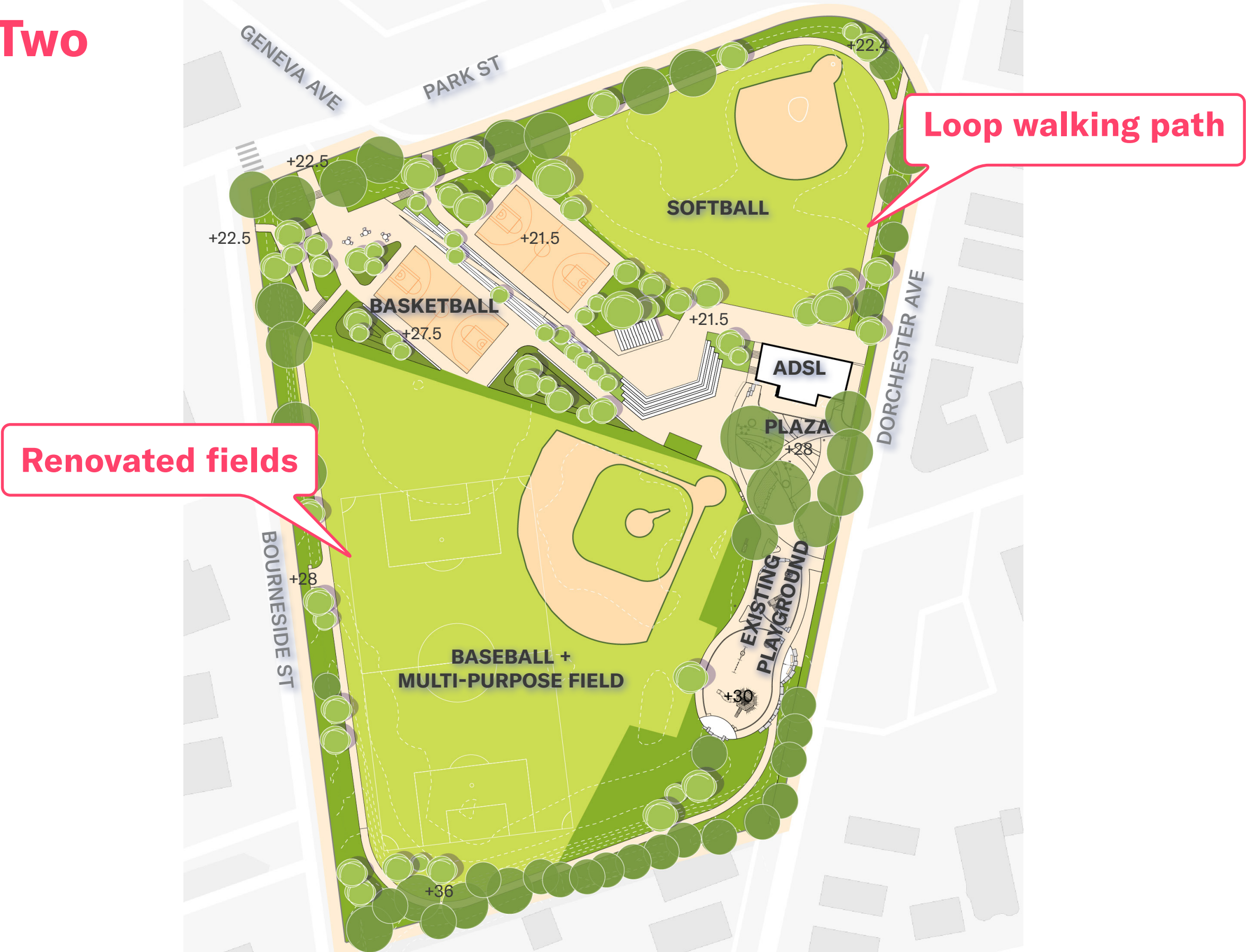
# EXCITING AMENITIES AT EACH PHASE

## Phase One



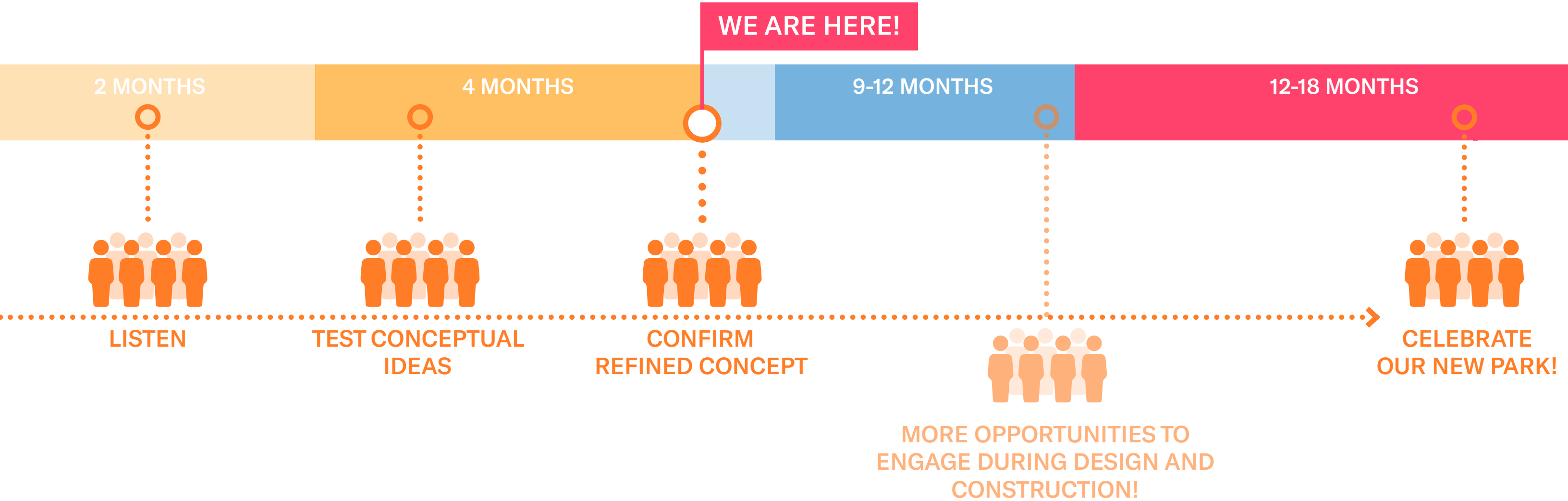
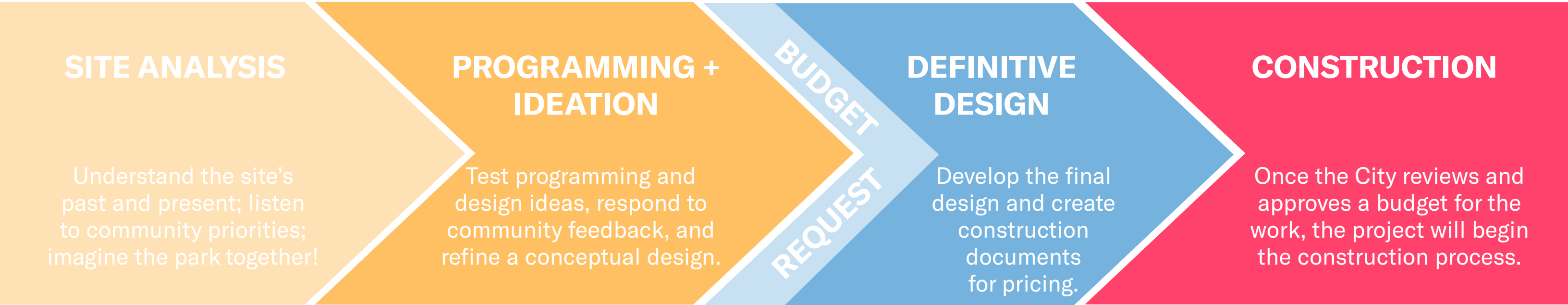
# EXCITING AMENITIES AT EACH PHASE

## Phase Two





# NEXT STEPS





# THANK YOU!

Please join us for a discussion on the project!



City of Boston  
Parks and Recreation

Agency  
Landscape + Planning



# DISCUSSION GUIDELINES

**Let's ensure the conversation is respectful and leaves room for all voices!**

- Please be respectful and mindful of each other's time when asking questions / providing comments, so that all attendees are able to participate in the meeting.
- Please wait until all attendees have had the opportunity to ask a question / provide a comment before providing additional questions / comments.
- You can always set up a conversation with Nathan Frazee, [Nathan.Frazee@boston.gov](mailto:Nathan.Frazee@boston.gov), to further discuss the project or process.



# THANK YOU!

Please visit the project webpage: [boston.gov/town-field](https://boston.gov/town-field)

For questions, maintenance requests or concerns regarding any of our parks contact 311





# IMAGE REFERENCES

## Slide 20

Mary Hannon Park, Roxbury - City of Boston

Garvey Playground, Dorchester - <<https://urbnparks.com/boston/garvey-playground/>>

## Slide 22

Mary Hannon Park, Roxbury - City of Boston

Lincoln Park, Somerville - Weston & Sampson

## Slide 23

Sofía Córdova, A Touch Could Be The Spark, How Will I Recognize You? (Braid & Huddle, Billboard), 2022. <<https://artgalleries.tufts.edu/exhibitions/70-a-touch-could-be-the-spark-how-will-i-recognize-you-braid-huddle-billboard/>>

Eli Brown, Beam Me Down, LoPresti Park, East Boston, 2022. Photo by Caitlin Cunningham Photography LLC. <<https://bostonartreview.com/reviews/new-public-art-projects-keeping-us-outdoors-fall-2022/>>

Dzidzor Azaglo and Crystal Bi, “Wilderness Project”, Carson Beach, 2022. <<https://bostonartreview.com/reviews/new-public-art-projects-keeping-us-outdoors-fall-2022/>>

Tran Vu, Mural at Harbor Health Food Pantry, Neponset, 2023. Courtesy of Tran Vu Arts. <<https://www.tranvuarts.com/press>>