



Improvements to

FRANKLIN

PARK

TENNIS

EXPANSION

Community Meeting #2

Schematic Design



FRANKLIN PARK TRUST PROJECTS

Year 1 (2023)

Enhanced Maintenance:

- Invasive vegetation removal and treatment at the Overlook
- Debris removal at Blue Hill Ave/Refectory entrance
- Cobble gutter cleaning
- Drain cleaning

Design work:

- for Glen Road pathway repaving
- Design work for Overlook stairs resetting and repointing

Programming- Franklin Park Coalition:

- Music in the Park
- Kite Festival
- Nature Tours

Year 2 (2024)

Enhanced Maintenance:

- Repaved Glen Road pathway
- Repaired Overlook stairs
- Repaired Refectory stairs
- Continued and expanded invasive vegetation treatment
- Continued cobble gutter cleaning
- Rehabilitated picnic area in the Wilderness

Design work:

- for Ellicott Arch, stone work, vegetation and lighting

Programming- Franklin Park Coalition:

- Music in the Park
- Kite Festival

Improvements to
Franklin Park Tennis
Community Meeting #2
Schematic Design

FRANKLIN PARK ACTION PLAN INITIATIVES

Maintenance and Operations

Maintenance:

- PowerCore collaboration on invasive removal
- Tree crew increased staffing allowing for more tree maintenance to happen in Franklin Park

Operations:

- An Executive Director of Franklin Park position was created based on the recommendations of the Action Plan
- The posting is live and the City is currently conducting interviews.

Sign up for Franklin Park email lists



Capital Improvements Program

Bear Dens- Make Safe Project

boston.gov/improvements-franklin-park-bear-dens



Overlook Study and Conceptual Design:

boston.gov/departments/parks-and-recreation/franklin-park-overlook-shelter-programming-and-design-study



Tennis Expansion:

boston.gov/franklin-park-tennis



Circuit Drive Traffic Calming and Drainage:

- RFQ is currently available
- Designer selection in the coming months

Dog Facility Study:

- Designer selected
- In contract phase

Improvements to
Franklin Park Tennis
Community Meeting #2
Schematic Design

AGENDA

1

PROJECT TEAM

2

PROJECT GOALS AND SCOPE

3

PRESENTATION OF DESIGN CONCEPTS

4

LISTENING AND DISCUSSION

5

CLOSING REMARKS & NEXT STEPS

Improvements to
Franklin Park Tennis
Community Meeting #2
Schematic Design

PROJECT TEAM

Lauren Bryant

Project Manager

lauren.bryant@boston.gov or 617-961-3019

Office of Neighborhood Services:

Roxbury:

Asha Janay

asha.janay@boston.gov

Mattapan:

Asiah Wotring

asiah.wotring@boston.gov

Mid-Dorchester: **Anthony Nguyen**

anthony.nguyen@boston.gov

Jamaica Plain: **Caroline Peters**

caroline.peters@boston.gov

Kyle Zick

Principal, Kyle Zick Landscape Architecture, Inc.

Yongjae Lee

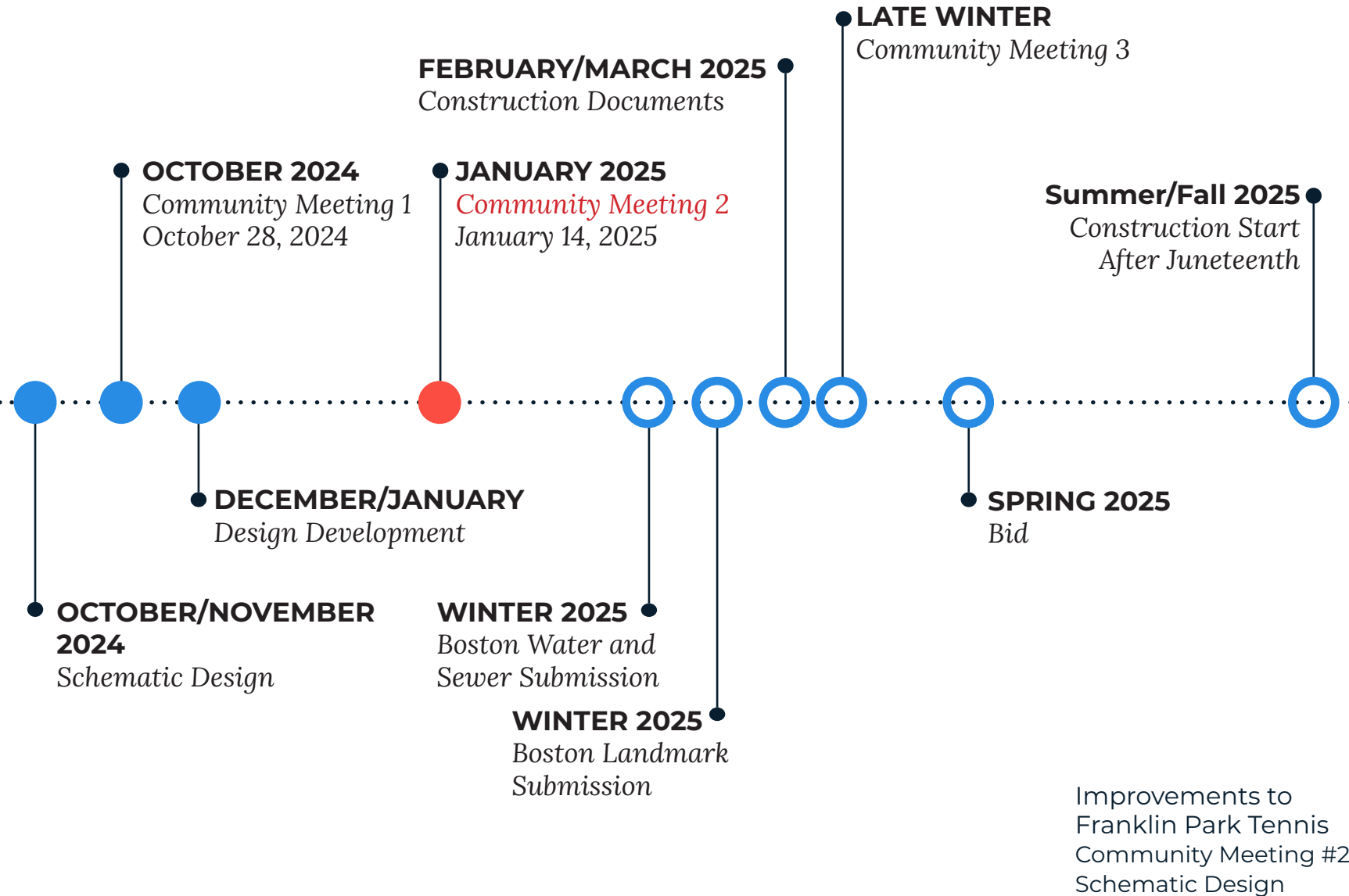
Associate, Kyle Zick Landscape Architecture, Inc.

David Nardone

Principal, Vision Sports Design



PROJECT SCHEDULE & FUNDING





CITY OF BOSTON PRIORITIES

- **Expanding walkable access to parks**
- **Addressing equity**
- **Climate resilience**
- **Health**
- **Housing and community building**



PARK & RECREATION GOALS

- Accessible and available to all
- Diverse, balanced, and efficient mix of uses
- Meaningful and inclusive community engagement
- Adaptive and resilient landscapes
- Promote connections



FRANKLIN PARK TENNIS DESIGN SCOPE OF WORK

- **Tennis complex expansion**
- **Tennis lighting**
- **Picnic area**
- **Parking edge**
- **Pathways**



The Big Picture

Amplify Magnet Destinations

Franklin Park was intended to serve as a common ground — a place for recreation, relaxation, and to experience nature — welcoming all communities and bringing people together for shared experiences that support discovery, education, and mental and physical health. We must celebrate all it has to offer and build on its long legacy of serving many groups in many ways. Larger centers of activity must be complemented by smaller destinations distributed throughout the park.



Diversifying Destinations

The park already has many, much-loved centers of activity. Larger destinations are often anchored by stakeholder offerings (like the zoo or the stadium), while smaller destinations are usually distributed and repeat throughout the park. Clarifying the design of each of these destinations and expanding their programming where desirable will ensure that all sides of the park can fully, and in distinct ways, serve gatherings both large and small.

Protecting Historic Features

While most of the historic structures in the park no longer exist or are in serious decline, they continue to draw visitors. The key remaining elements deserve a comprehensive conditions assessment and an updated historic structures report to inform either restoration or future transformation.



Investing in the Major Magnets

The park has a long legacy of serving many groups in many different ways - from performance and recreation to education and community building. Recommendations for the Major Magnets build on each of their histories and amplify the programs and character of each space, further enhancing these four major destinations, each with a defined identity and unique offerings.

Ellicottdale:
A Place for
Gathering & Relaxation

The Playstead:
A Center for Arts
& Recreation

Peabody Circle:
A Civic Gateway

The Yard:
A Commitment to
Care & Stewardship



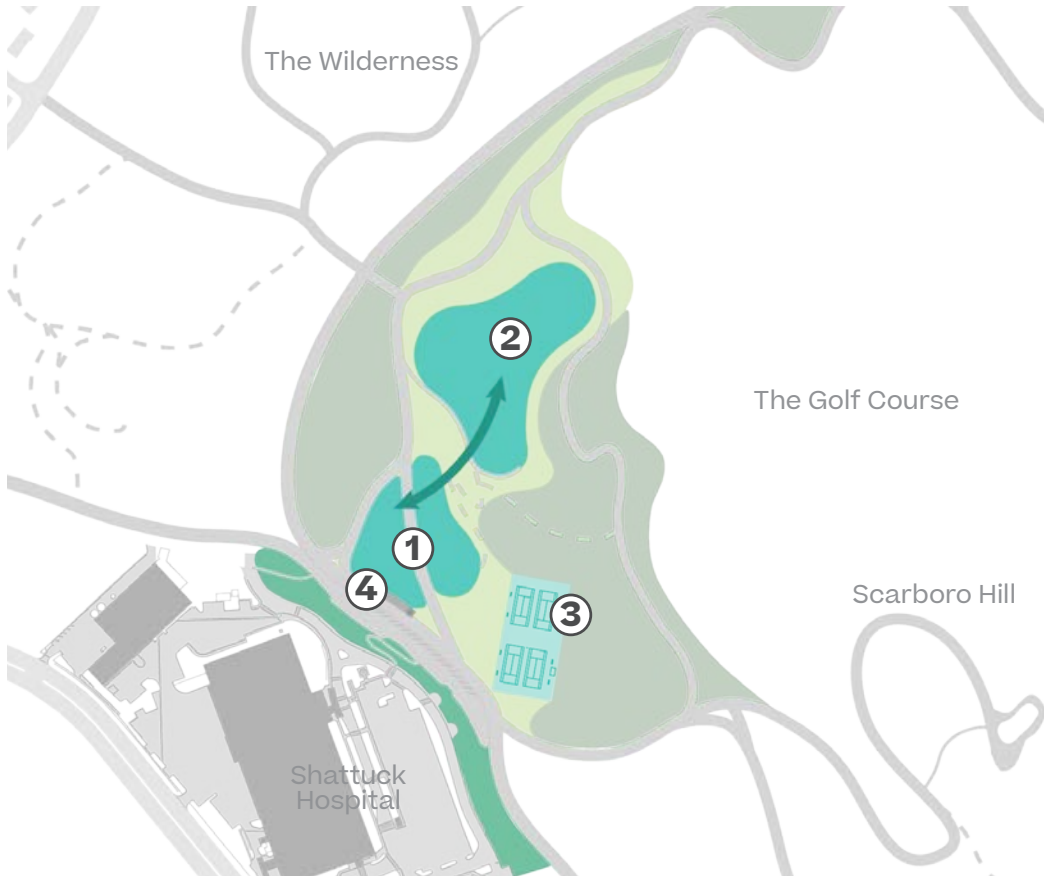
Mini Magnets

- High Points - Lookouts
- Low Points - Unique Ecologies
- Play & Education

Highlighting the Mini Magnets

The park's smaller destinations include wide-ranging improvements and programming that support the day-to-day use of the park. As opposed to the major magnets, these destinations may repeat on multiple sides of the park, promoting a more equitable distribution of certain programs and encouraging convenient and habitual use from the surrounding neighborhoods. Sometimes situated at elevational high or low points, mini magnets also allow visitors to experience the park's dramatic topography.

ELLICOTTDALE'S OPEN LAWNS



Proposed Open Spaces

- ① Upper Lawns
- ② Lower Lawn
- ③ Expanded Tennis Courts
- ④ Pavilion / Shade Structure



Movie Night



Picnic



Informal
Lawn Games

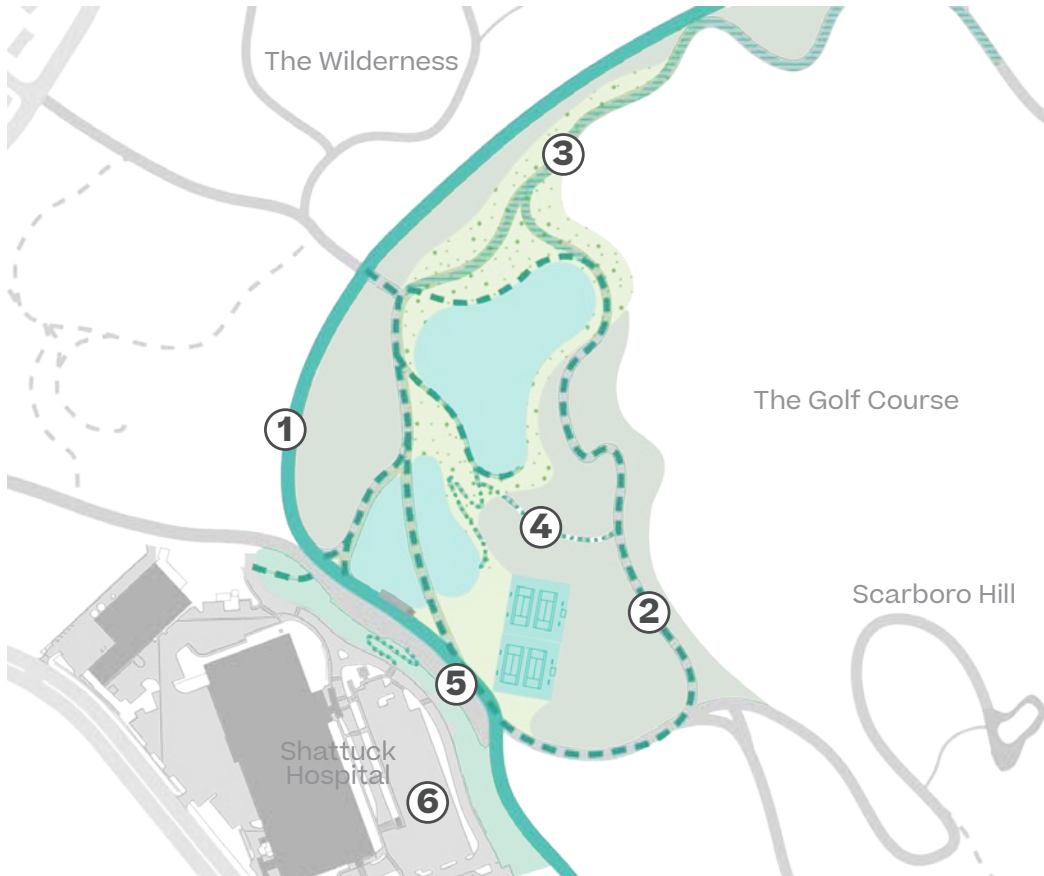


Exercise
Classes



BBQ

ELLICOTTDALE CIRCULATION & PLANTING



Proposed Circulation & Planting

- Open Lawns
- Buffer Planting
- Evergreen Planting
- Existing Adjacent Woodlands
- ① The Circuit Loop
- ② 1/2 mile Ellicott Loop
- ③ Flowering Tree Walk
- ④ Wet Woodland & Wet Meadow Trail
- ⑤ Parking Lot
- ⑥ Opportunity for some restored park land at the Shattuck site

SITE ANALYSIS

1

EXISTING CONDITIONS PLAN

2

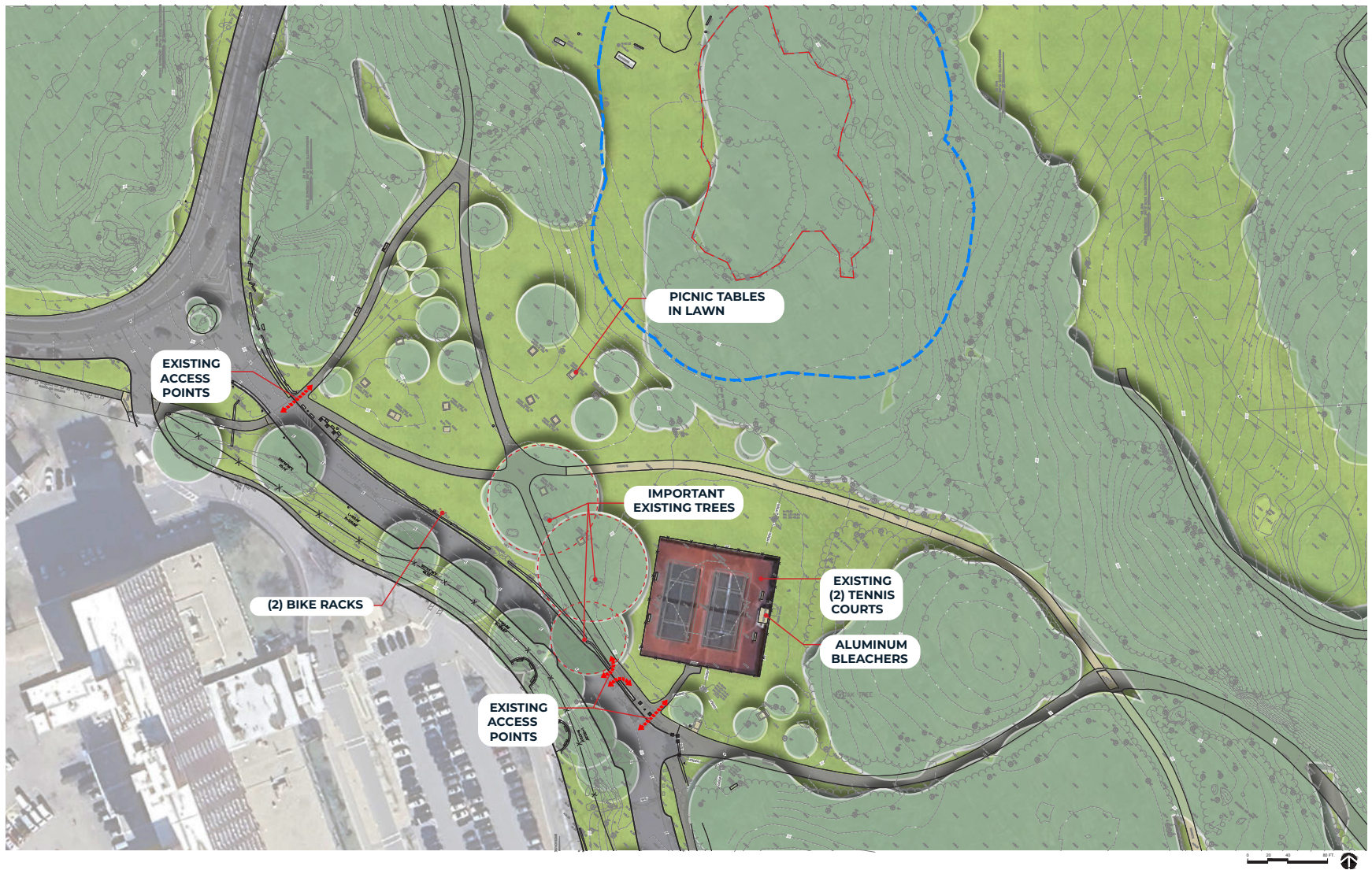
EXISTING PATH MATERIALS PLAN

3

HIEARCHY OF EXISTING PATH USE PLAN

4

EXISTING VEGETATION PLAN



SITE ANALYSIS - EXISTING CONDITIONS PLAN

Improvements to
Franklin Park Tennis
Community Meeting #2
Schematic Design



SITE ANALYSIS - EXISTING PATH MATERIALS PLAN

Improvements to
Franklin Park Tennis
Community Meeting #2
Schematic Design



SITE ANALYSIS - HIEARCHY OF EXISTING PATH USE PLAN

Improvements to
Franklin Park Tennis
Community Meeting #2
Schematic Design



SITE ANALYSIS - EXISTING VEGETATION PLAN

Improvements to
Franklin Park Tennis
Community Meeting #2
Schematic Design

SCHEMATIC DESIGN TO REVIEW

1

4 OR 5 TENNIS COURTS

2

TENNIS AMENITIES

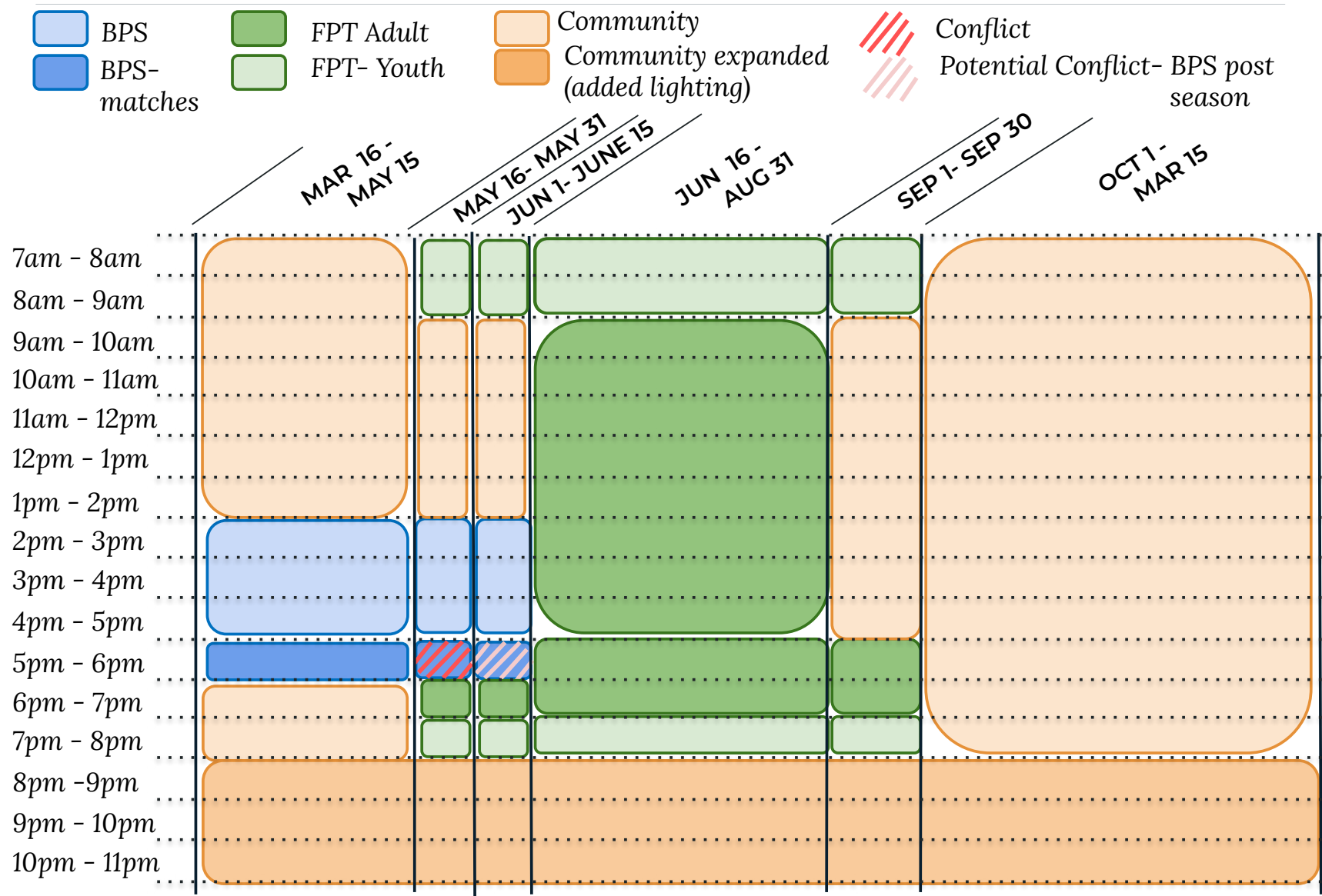
3

PATHWAYS

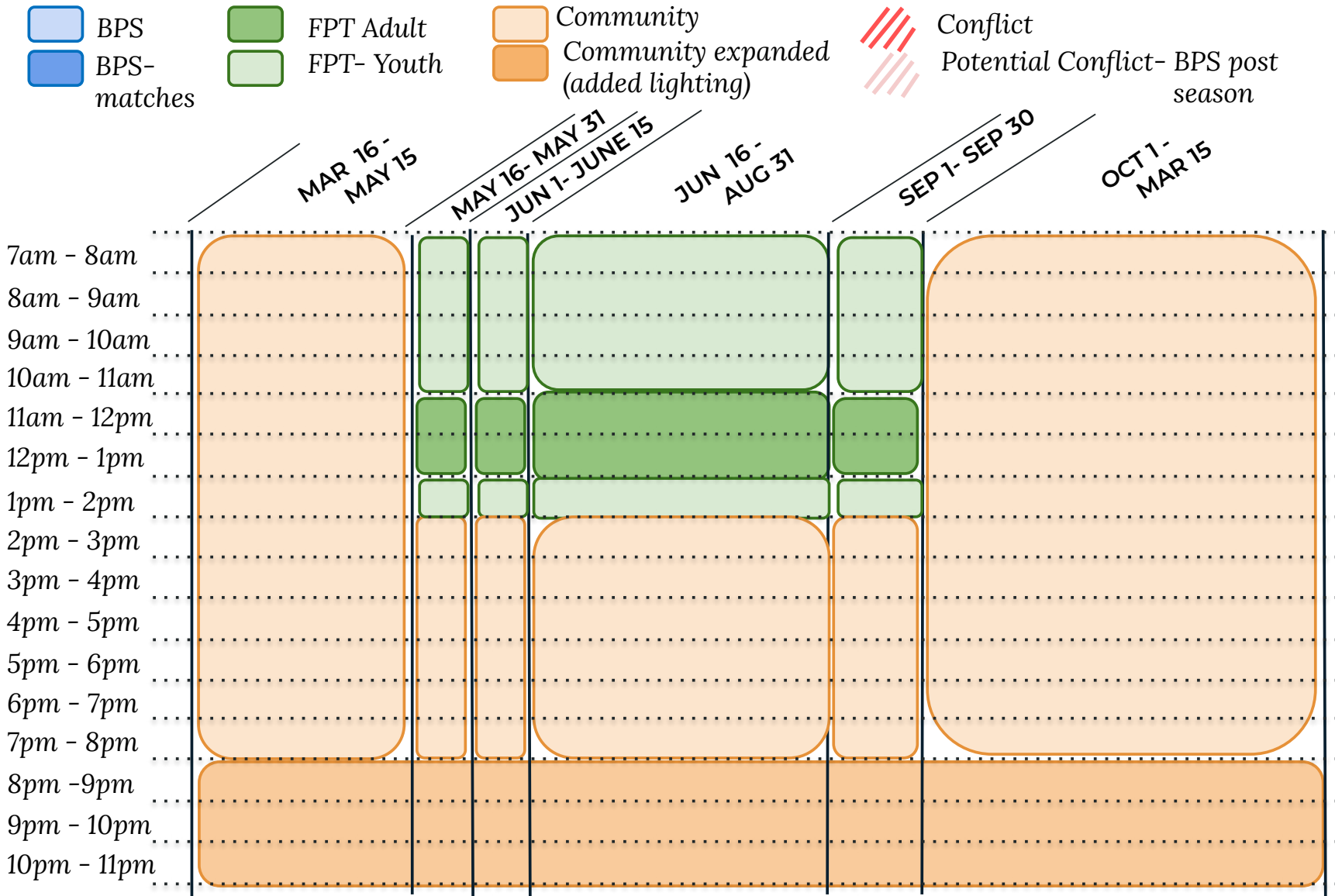
4

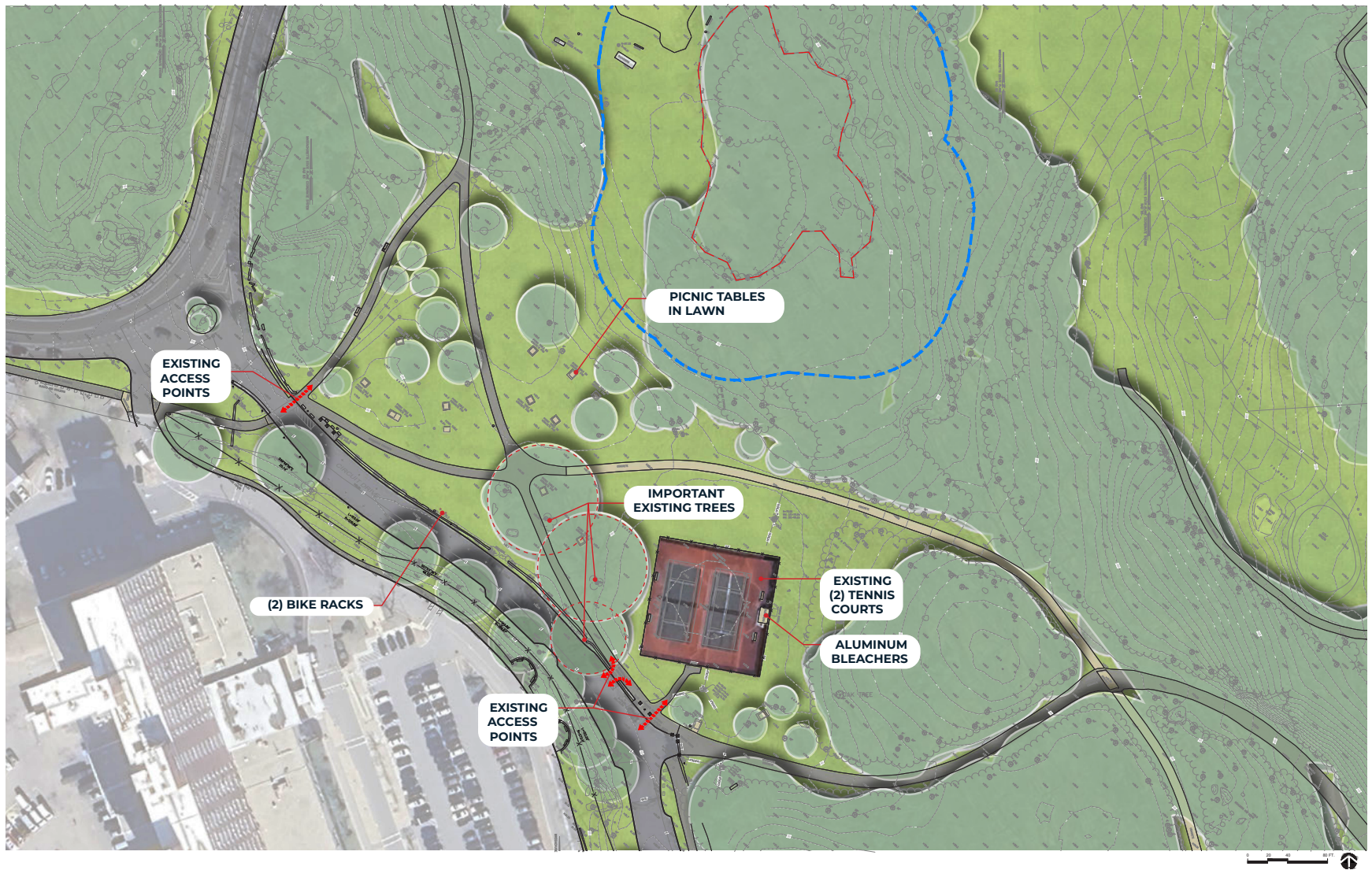
ENTRANCES

TENNIS USAGE SCHEDULE-WEEKDAYS



TENNIS USAGE SCHEDULE-WEEKENDS





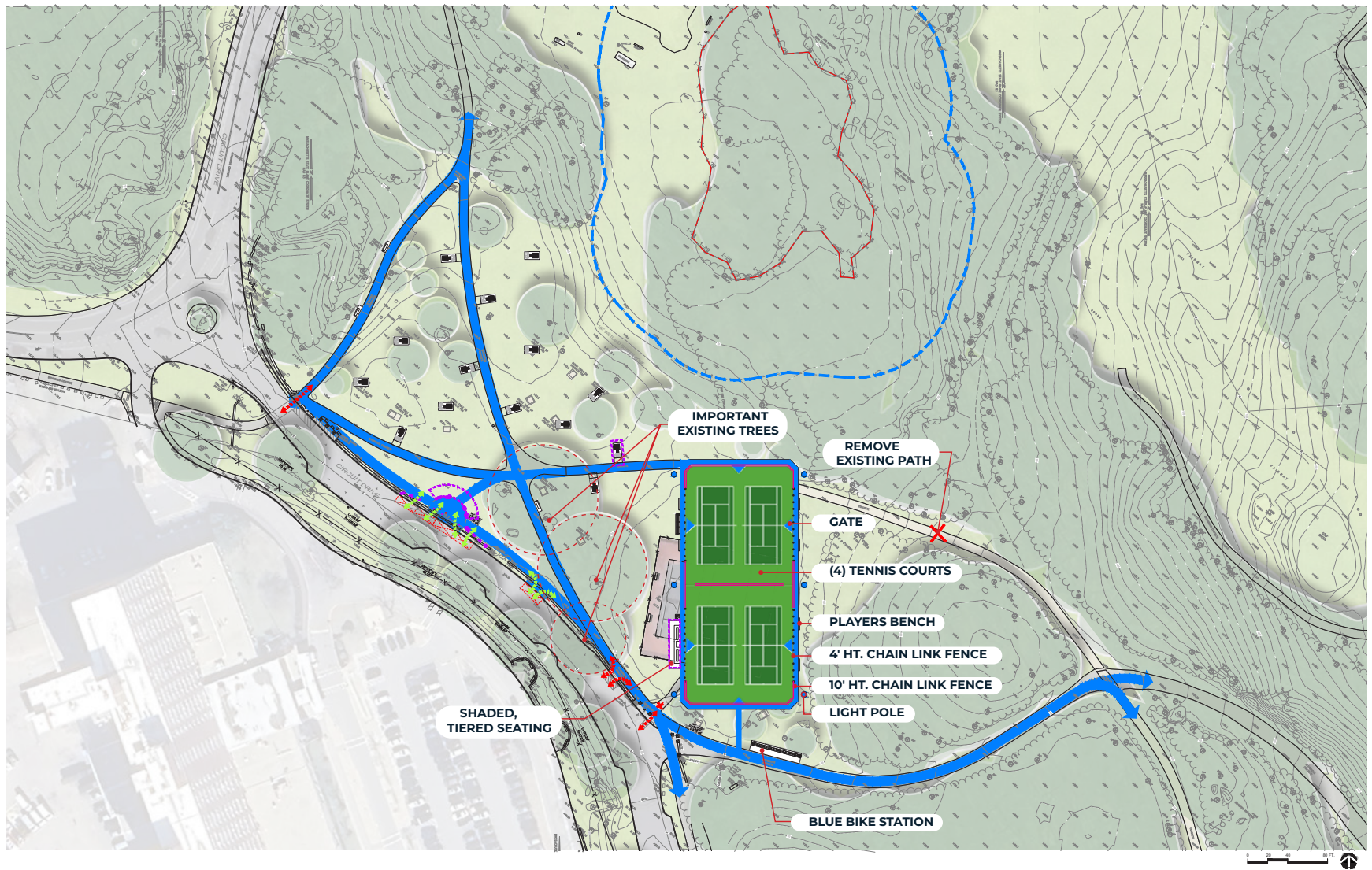
SITE ANALYSIS - EXISTING CONDITIONS PLAN

Improvements to
Franklin Park Tennis
Community Meeting #2
Schematic Design



SITE ANALYSIS - EXISTING CONDITIONS PLAN

Improvements to
Franklin Park Tennis
Community Meeting #2
Schematic Design



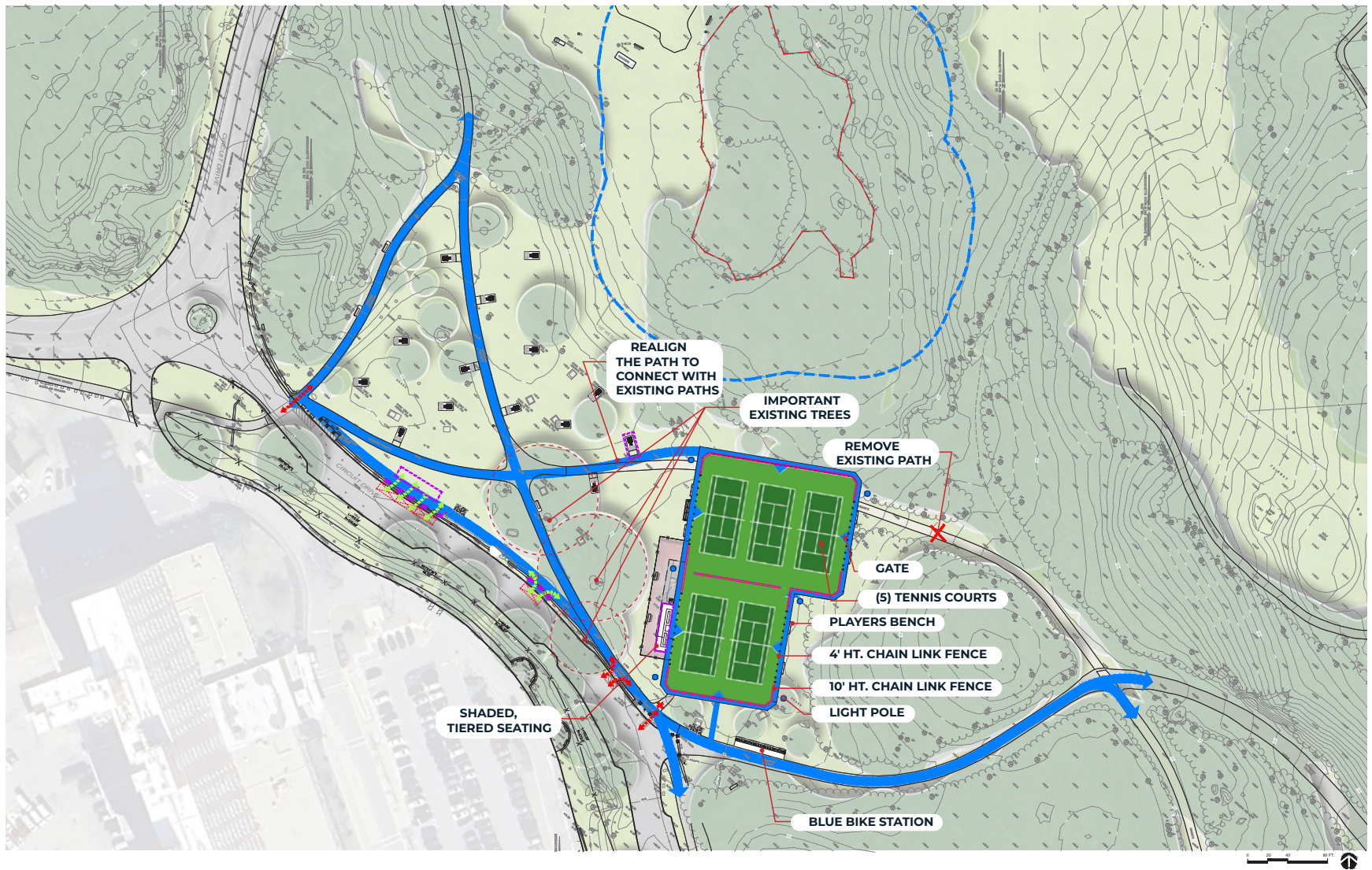
SITE CONCEPT - SITE PLAN OF 4 TENNIS COURTS

Improvements to
Franklin Park Tennis
Community Meeting #2
Schematic Design



SITE CONCEPT - SITE PLAN OF 4 TENNIS COURTS

Improvements to
Franklin Park Tennis
Community Meeting #2
Schematic Design



SITE CONCEPT - SITE PLAN OF 5 TENNIS COURTS

Improvements to
Franklin Park Tennis
Community Meeting #2
Schematic Design



SITE CONCEPT - SITE PLAN OF 5 TENNIS COURTS

Improvements to
Franklin Park Tennis
Community Meeting #2
Schematic Design



**SITE CONCEPT -
SITE PLANS OF 4& 5 TENNIS COURTS**

Improvements to
Franklin Park Tennis
Community Meeting #2
Schematic Design



Practice Wall



**Tiered Seating-with
or without Shade Structure**



Aluminum Bleachers



Carter Playground

PLAYERS BENCHES

TIERED SEATING

4' TALL CHAIN LINK FENCE

10' TALL CHAIN LINK FENCE

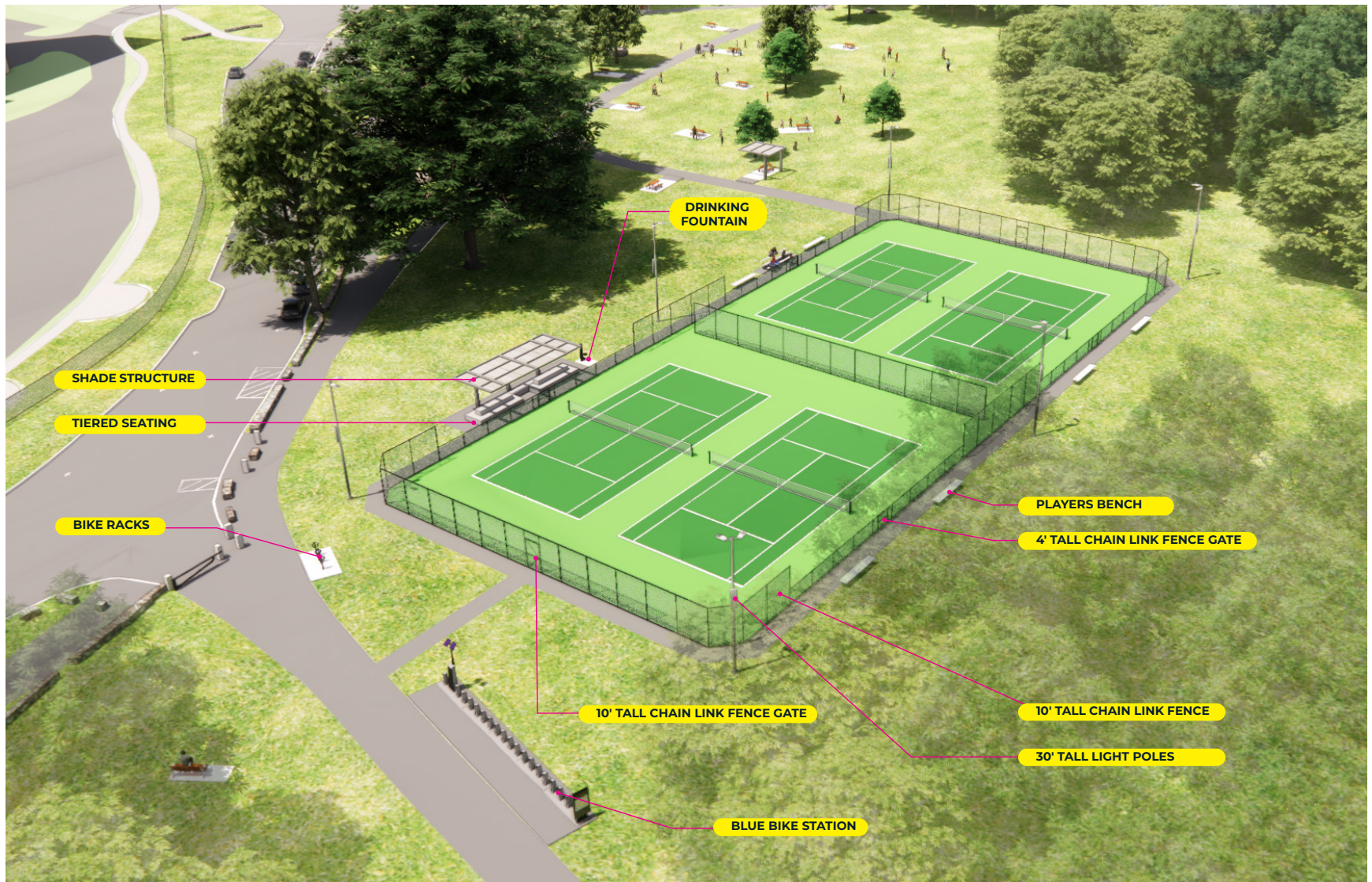
50' TALL LIGHT POLES



Drinking Fountain

SCHEMATIC DESIGN - TENNIS AMENITIES: SEATING, FENCE/GATE, LIGHTING

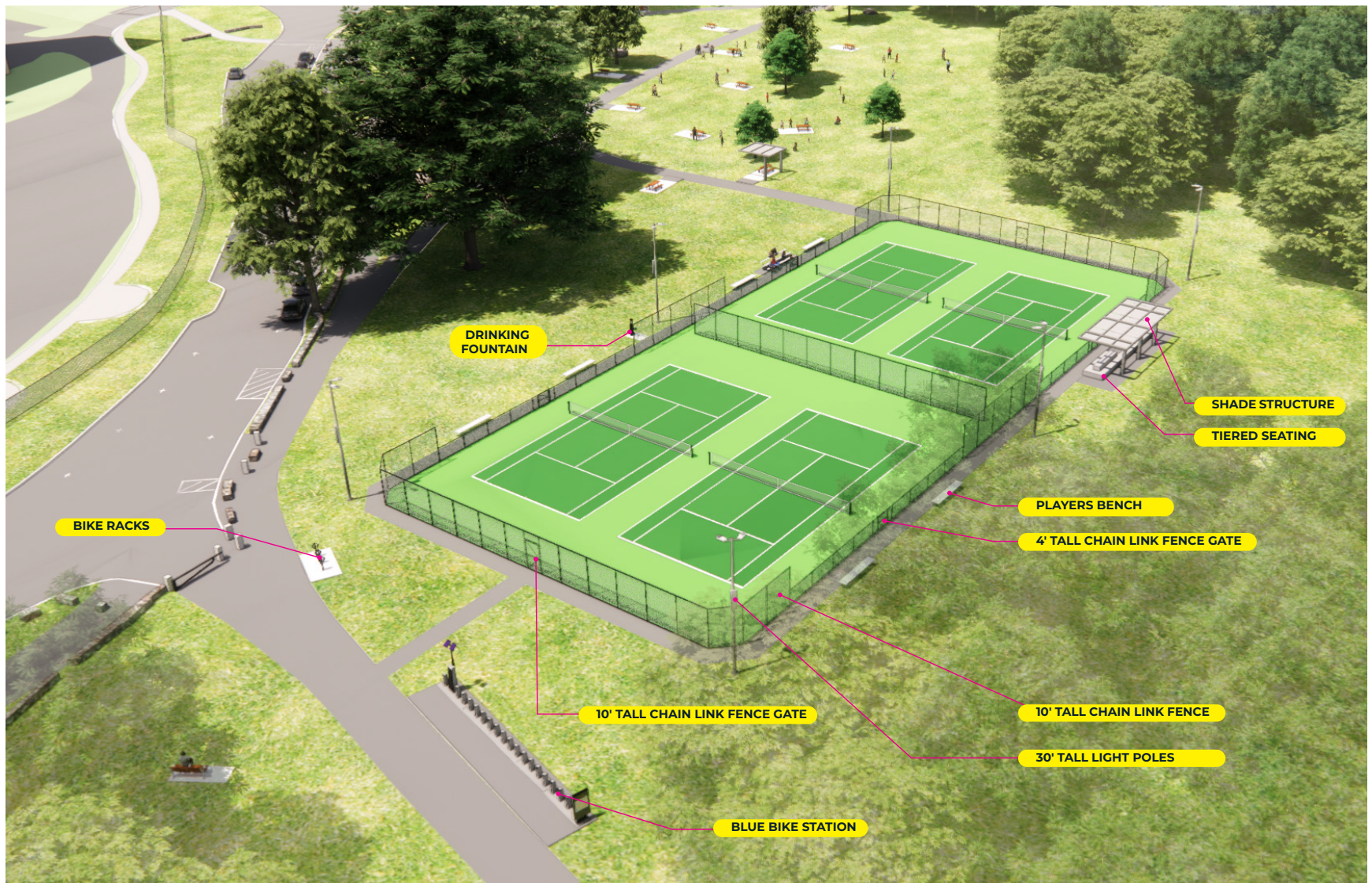
Improvements to
Franklin Park Tennis
Community Meeting #2
Schematic Design



SCHEMATIC DESIGN - OPTION 1

TENNIS AMENITIES: SEATING, FENCE/GATE, LIGHTING

Improvements to
Franklin Park Tennis
Community Meeting #2
Schematic Design



SCHEMATIC DESIGN - OPTION 2

TENNIS AMENITIES: SEATING, FENCE/GATE, LIGHTING

Improvements to
Franklin Park Tennis
Community Meeting #2
Schematic Design



Match existing colors



Green on green (dark court, light surround)



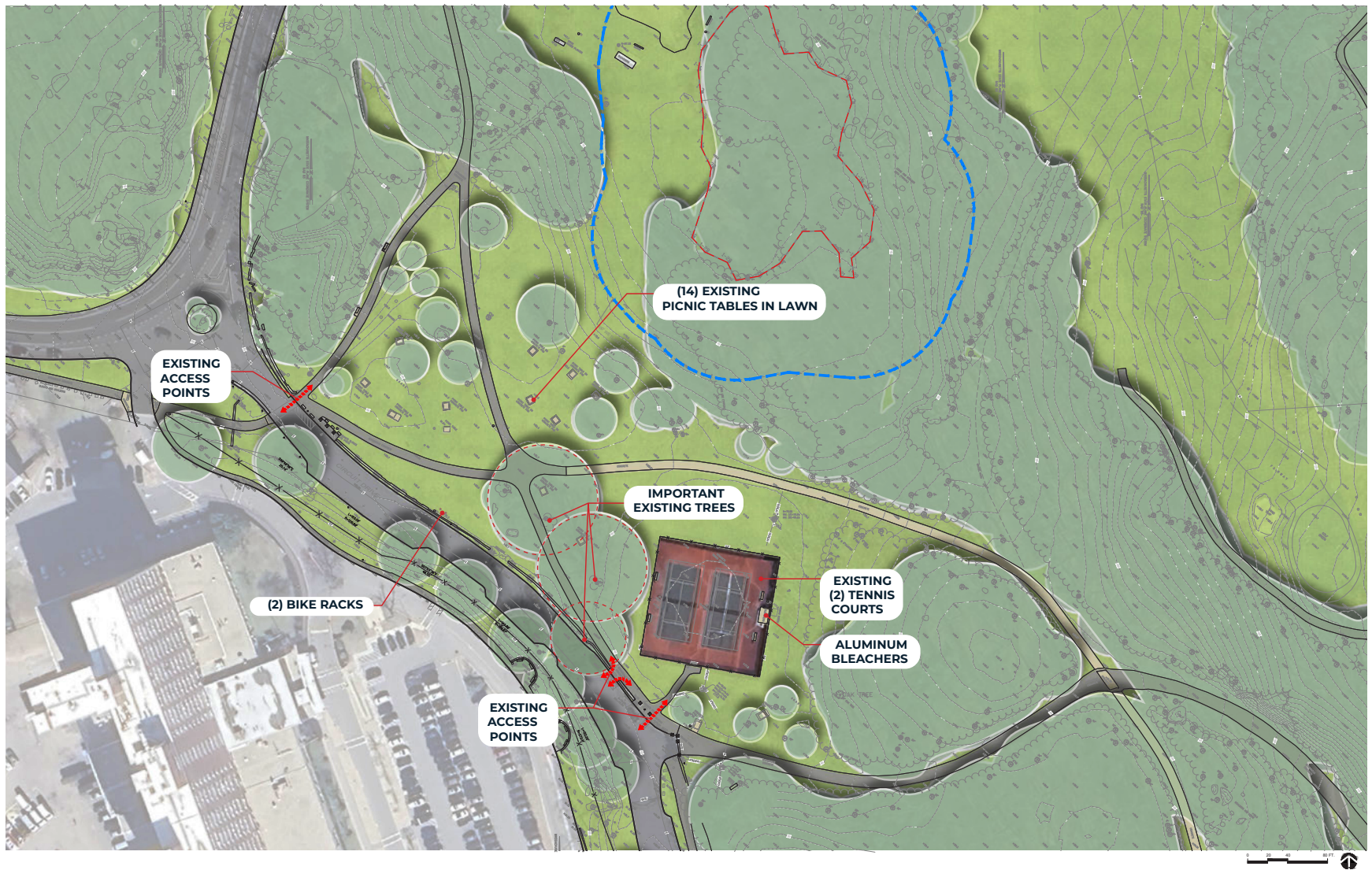
Green on green (light court, dark surround)



Green on brown (see below, might make the courts seem smaller, surrounding receding)

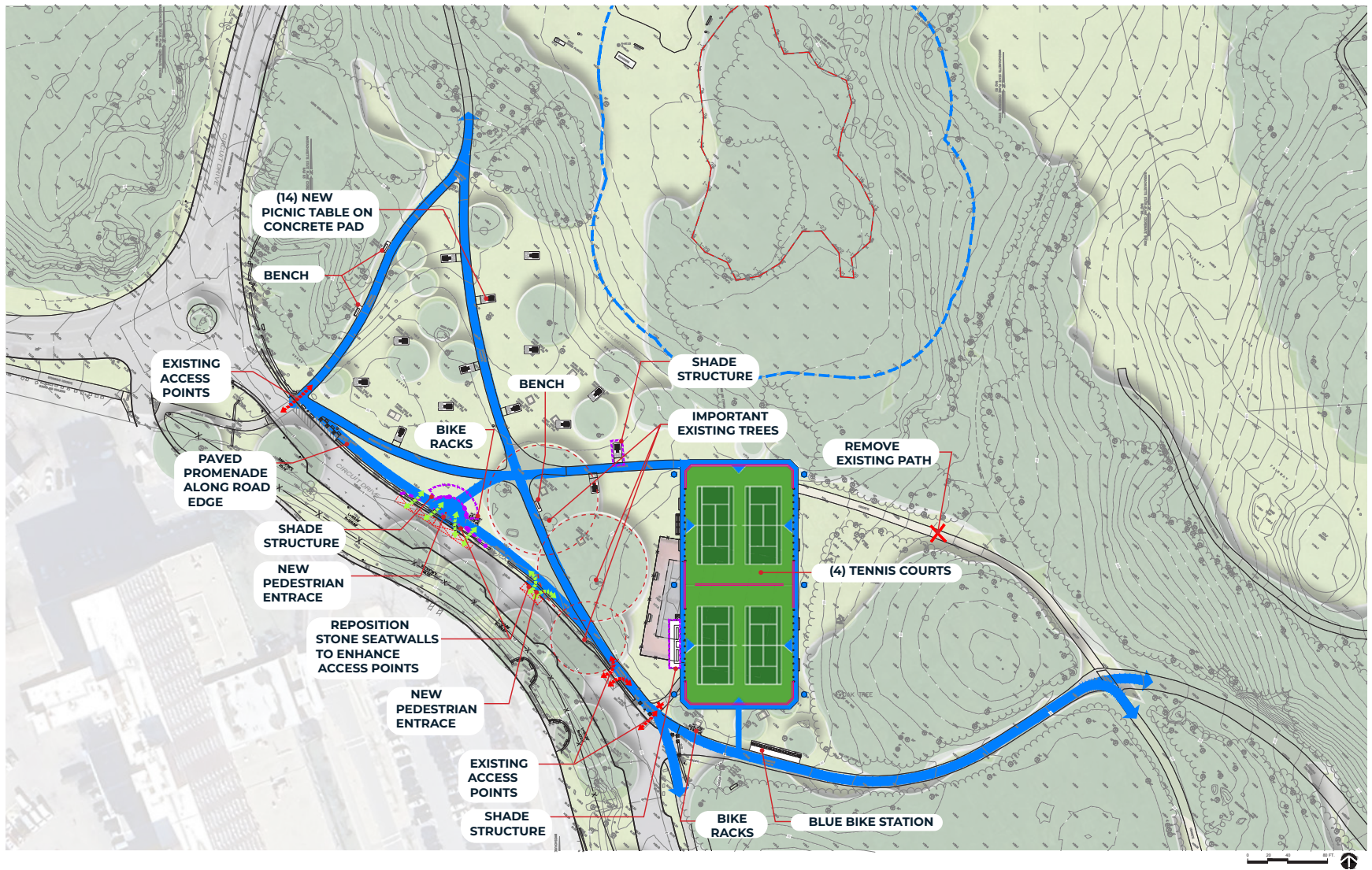
SCHEMATIC DESIGN - TENNIS AMENITIES: COURT COLOR OPTIONS

Improvements to
Franklin Park Tennis
Community Meeting #2
Schematic Design



SITE ANALYSIS - EXISTING CONDITIONS PLAN - PATHWAYS

Improvements to
Franklin Park Tennis
Community Meeting #2
Schematic Design



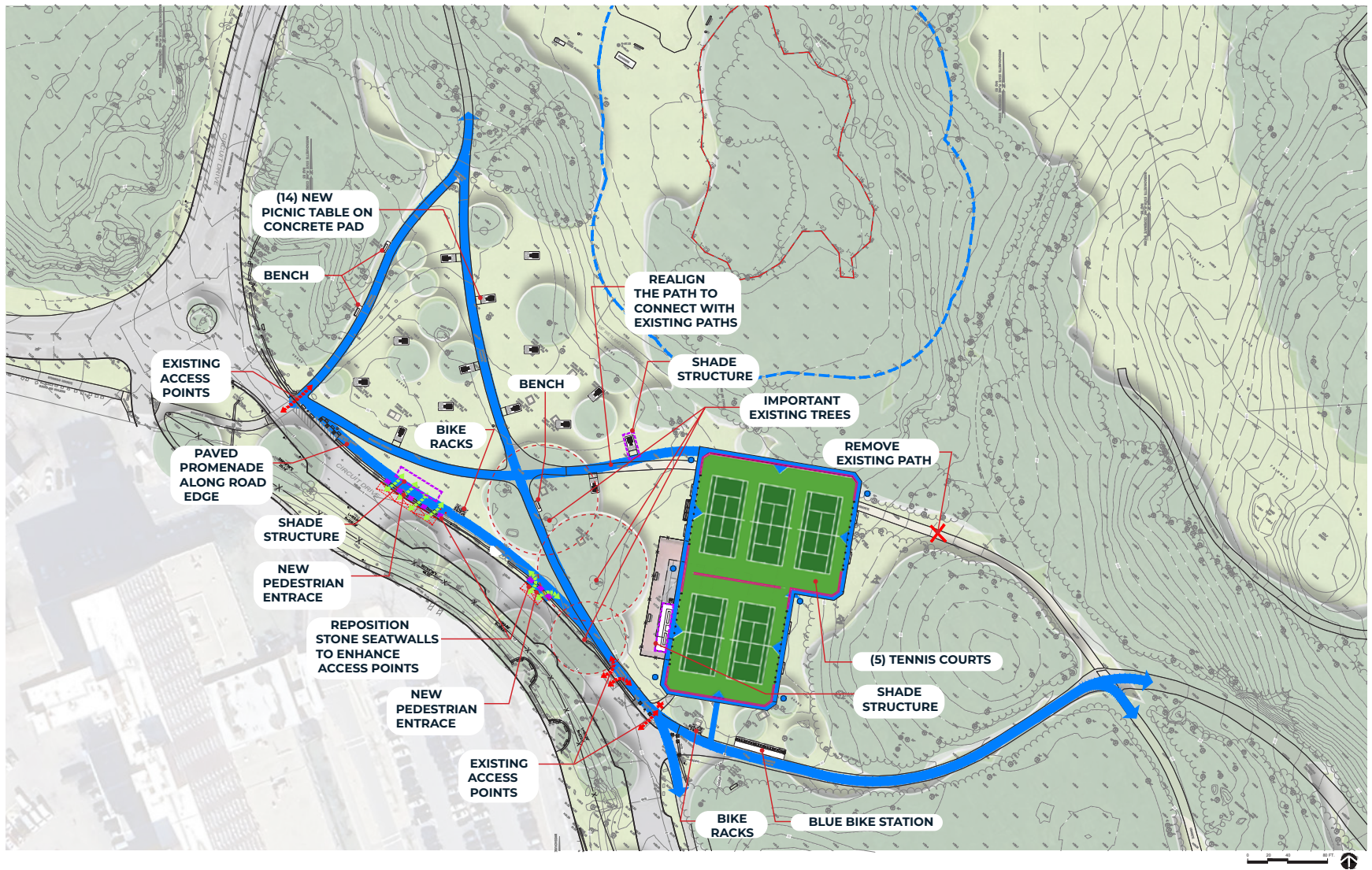
PATHWAY AND ENTRANCE - OPTION 1

Improvements to
Franklin Park Tennis
Community Meeting #2
Schematic Design



ENTRANCE STUDIES - OPTION 1

Improvements to
Franklin Park Tennis
Community Meeting #2
Schematic Design



PATHWAY AND ENTRANCE - OPTION 2

Improvements to
Franklin Park Tennis
Community Meeting #2
Schematic Design



ENTRANCE STUDIES - OPTION 2

Improvements to
Franklin Park Tennis
Community Meeting #2
Schematic Design



Picnic Table



Typical Bench



Grill



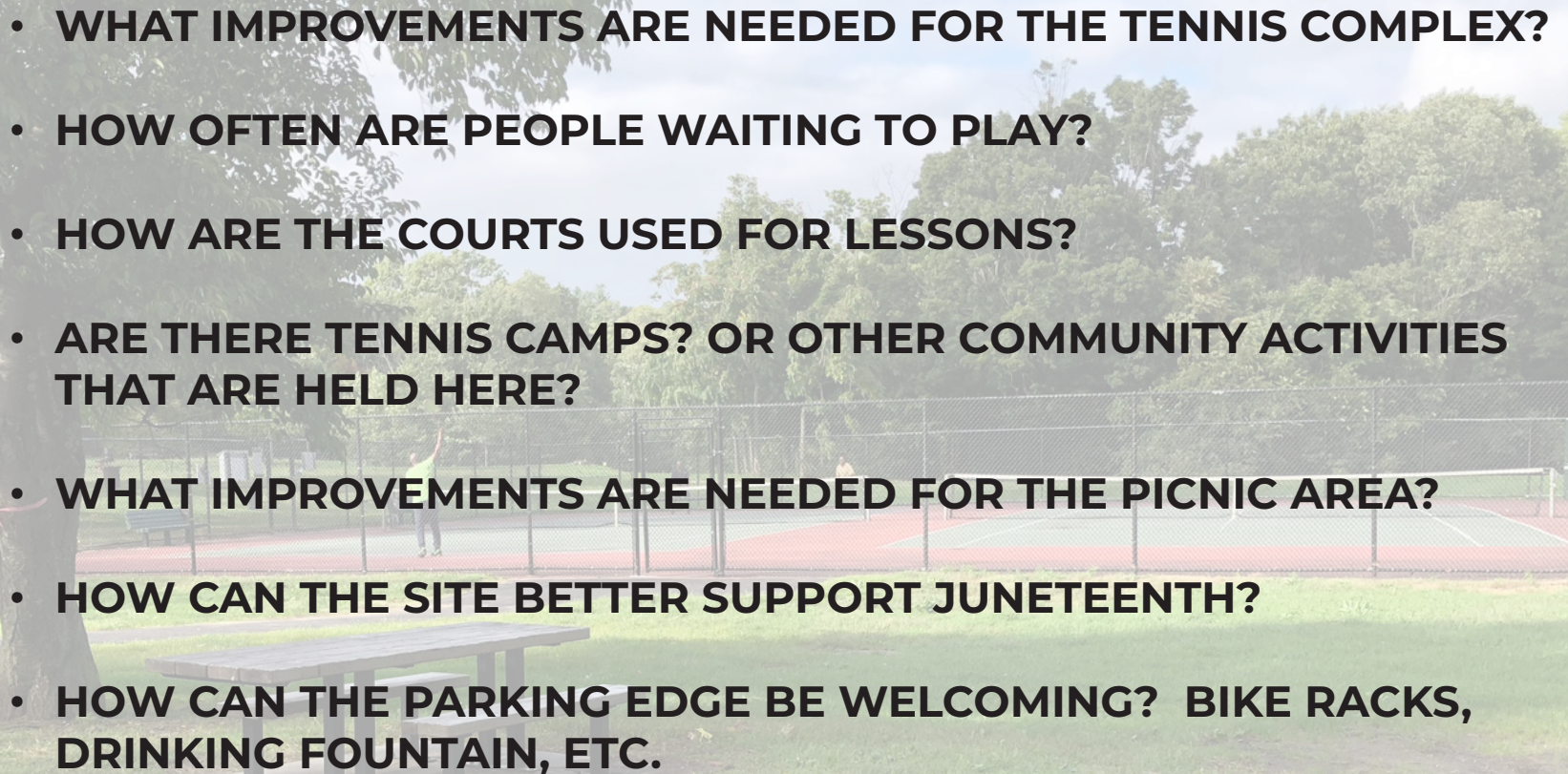
Bike Racks



Precedent of Shade Structure

SCHEMATIC DESIGN - PARK AMENITIES: PICNIC TABLES, GRILLS, TYPICAL BENCH

Improvements to
Franklin Park Tennis
Community Meeting #2
Schematic Design

- 
- **WHAT IMPROVEMENTS ARE NEEDED FOR THE TENNIS COMPLEX?**
 - **HOW OFTEN ARE PEOPLE WAITING TO PLAY?**
 - **HOW ARE THE COURTS USED FOR LESSONS?**
 - **ARE THERE TENNIS CAMPS? OR OTHER COMMUNITY ACTIVITIES THAT ARE HELD HERE?**
 - **WHAT IMPROVEMENTS ARE NEEDED FOR THE PICNIC AREA?**
 - **HOW CAN THE SITE BETTER SUPPORT JUNETEENTH?**
 - **HOW CAN THE PARKING EDGE BE WELCOMING? BIKE RACKS, DRINKING FOUNTAIN, ETC.**



LISTENING & DISCUSSION

Help us build great parks.
Let us know what matters to you.

NEXT STEPS

NEXT PUBLIC MEETING(S)

- Design Development
- Late Winter 2025 Community Meeting

VISIT PROJECT WEBSITE

WEB LINK:

<https://www.boston.gov/departments/parks-and-recreation/franklin-park-tennis-expansion>

Scan me with your
phone's camera!

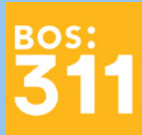


Improvements to
Franklin Park Tennis
Community Meeting #2
Schematic Design

THANK YOU!

See the project website for future updates.

Next Meeting(s):
Late Winter 2025 Community Meeting #3



For questions, maintenance requests or
concerns regarding any of our
parks contact 311



January 14, 2025
Boston Parks and Recreation



Existing tennis courts and pickleball courts in the city:

PARK	Neighborhood	Quantity		Court Type
Billings Field	West Roxbury	3	Tennis	Full
Billings Field	West Roxbury	1	Tennis	Quickstart
Boston Common	Back Bay/Beacon Hill	2	Tennis	Full
Bynoe Park	Roxbury	1	Tennis	Full
Byrne Playground	Dorchester	1	Tennis	Full
Carter Playground	Roxbury	5	Tennis	Full
Cassidy Playground	Allston-Brighton	2	Tennis	Full
Clifford Playground	Roxbury	1	Tennis	Full
Dorchester Park	Dorchester	2	Tennis	Full
East Boston Memorial Park	East Boston	2	Tennis	Full
English H.S. Athletic Fields	Jamaica Plain	4	Tennis	Full
Fallon Field	Roslindale	1	Tennis	Full
Franklin Park	Roxbury	4	Tennis	Full
George Wright Golf Course	Hyde Park	2	Tennis	Full
Hunt Playground	Mattapan	3	Tennis	Full
Hunt Playground	Mattapan	2	Tennis	Quickstart
Iacono/Readville Playground	Hyde Park	2	Tennis	Full
Madison Park H.S. Athletic Fields	Roxbury	2	Tennis	Full
Malcolm X Park I	Roxbury	2	Tennis	Full
Marcella Playground	Roxbury	1	Tennis	Full
Moakley Park	South Boston	3	Tennis	Full
Ochard Park	Roxbury	1	Tennis	Full
Peter Looney Park	Charlestown	1	Tennis	Full
Peters Park	South End	1	Tennis	Full

Porzio Park	East Boston	1	Tennis	Full
Porzio Park	East Boston	2	Tennis	Quickstart
Ramsay Park	Roxbury	1	Tennis	Full
Ringer Playground	Allston-Brighton	2	Tennis	Full
Ripley Playground	Dorchester	2	Tennis	Full
Ripley Playground	Dorchester	1	Tennis	Quickstart
Rogers Park	Allston-Brighton	2	Tennis	Full
Ross Playground	Hyde Park	1	Tennis	Full
Savin Hill Park	Dorchester	2	Tennis	Full
South Street Mall & Courts	Jamaica Plain	2	Tennis	Full
Thetford/Evans Playground	Dorchester	1	Tennis	Full
Walker Playground	Mattapan	1	Tennis	Full
Walsh Playground	Mattapan	1	Tennis	Full
West Roxbury H.S. Athletic Fields	West Roxbury	3	Tennis	Full
Winthrop Playground	Roxbury	1	Tennis	Full

PARK	Neighborhood	Quantity		Court Type
Billings Field	West Roxbury	3	Pickleball	Bring your own nets
Boston Common	Back Bay/Beacon Hill	2	Pickleball	Bring your own nets
Boston Common	Back Bay/Beacon Hill	1	Pickleball	Uses tennis net
Cassidy Playground	Allston-Brighton	2	Pickleball	Uses tennis net
DeFilippo Playground	North End	1	Pickleball	Bring your own nets
Dorchester Park	Dorchester	2	Pickleball	Uses tennis net
English H.S. Athletic Fields	Jamaica Plain	4	Pickleball	Standalone

Fallon Field	Roslindale	1	Pickleball	Uses tennis net
Malcolm X Park	Roxbury	2	Pickleball	Bring your own nets
Malcolm X Park	Roxbury	1	Pickleball	Uses tennis net
Moakley Park	South Boston	2	Pickleball	Standalone
Ochard Park	Roxbury	1	Pickleball	Uses tennis net
Peters Park	South End	1	Pickleball	Uses tennis net
Ramsay Park	Roxbury	1	Pickleball	Uses tennis net
South Street Mall & Courts	Jamaica Plain	6	Pickleball	Bring your own nets
Walker Playground	Mattapan	1	Pickleball	Uses tennis net