

The background image shows a steep, rocky cliffside covered in fallen autumn leaves. Several trees with green and yellowing foliage are scattered across the slope. In the lower-left background, a street with parked cars and a white van is visible. The entire image has a blue tint.

Designing the future of **GENEVA CLIFFS**

The meeting will begin shortly...



MEETING RECORDING



The Boston Parks and Recreation Department will be recording the meeting and posting to our project webpage for those who are unable to attend the Zoom meeting live.

It is possible that participants may also be recording the meeting with their phones cameras or other devices. If you do not wish to be recorded during this meeting, please keep your microphone muted and camera off.

*Please share with your neighbors and friends:
www.boston.gov/geneva-cliffs*

VIRTUAL MEETING ETIQUETTE

We want to ensure this conversation is a pleasant experience for all and that all community members/stakeholders are comfortable sharing their comments, questions and feedback.

Please be respectful and mindful of each other's time when asking questions/ providing comments, so that all attendees are able to participate in the meeting.

Keep questions/ comments project-specific and not personal to yield solution-driven discussion.

Please wait until all attendees have had the opportunity to ask a question/ provide a comment before providing additional questions/ comments.

*You can always set up a conversation with **Amy Linné**, amy.linne@boston.gov, to further discuss the project or process.*

ZOOM TIPS

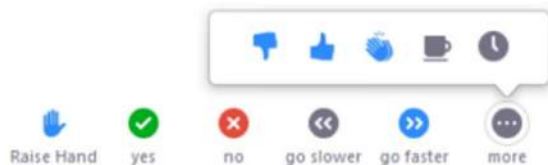
Here is how you can participate during the question and answer part of the presentation.

DURING THE PRESENTATION:



VIA WEB:

Turn video on / off.



To use these non-verbal options click on participants (bottom of screen); these options will pop up in side bar.

DURING THE Q&A:



JOINING VIA PHONE?

Use *9 to raise hand to ask for audio / video permission to ask questions or provide comments.



VIA WEB:

Chat to ask questions / comments or provide responses to poll questions



Raise hand to ask for audio / video permission to ask questions or provide comments.

AGENDA

1

PROJECT TEAM INTRODUCTION

2

PROJECT OVERVIEW

3

PRESENTATION

4

LISTENING & DISCUSSION

5

CLOSING REMARKS & NEXT STEPS

PROJECT TEAM

Amy Linné

PROJECT MANAGER, BPRD

amy.linne@boston.gov or 617-961-3045

Cathy Baker-Eclipse

DIRECTOR OF THE CAPITAL PLAN, BPRD

cathy.baker-eclipse@boston.gov

My'Kel McMillen

OUTREACH COORDINATOR, EXTERNAL AFFAIRS

corey.mcmillen@boston.gov or 617-201-1294

Anthony Nguyen

MID-DORCHESTER LIAISON, OFFICE OF NEIGHBORHOOD SERVICES

anthony.nguyen@boston.gov

Kaki Martin, Principal

Sharon Komarow, Senior Associate

Dora Mugerwa, Designer

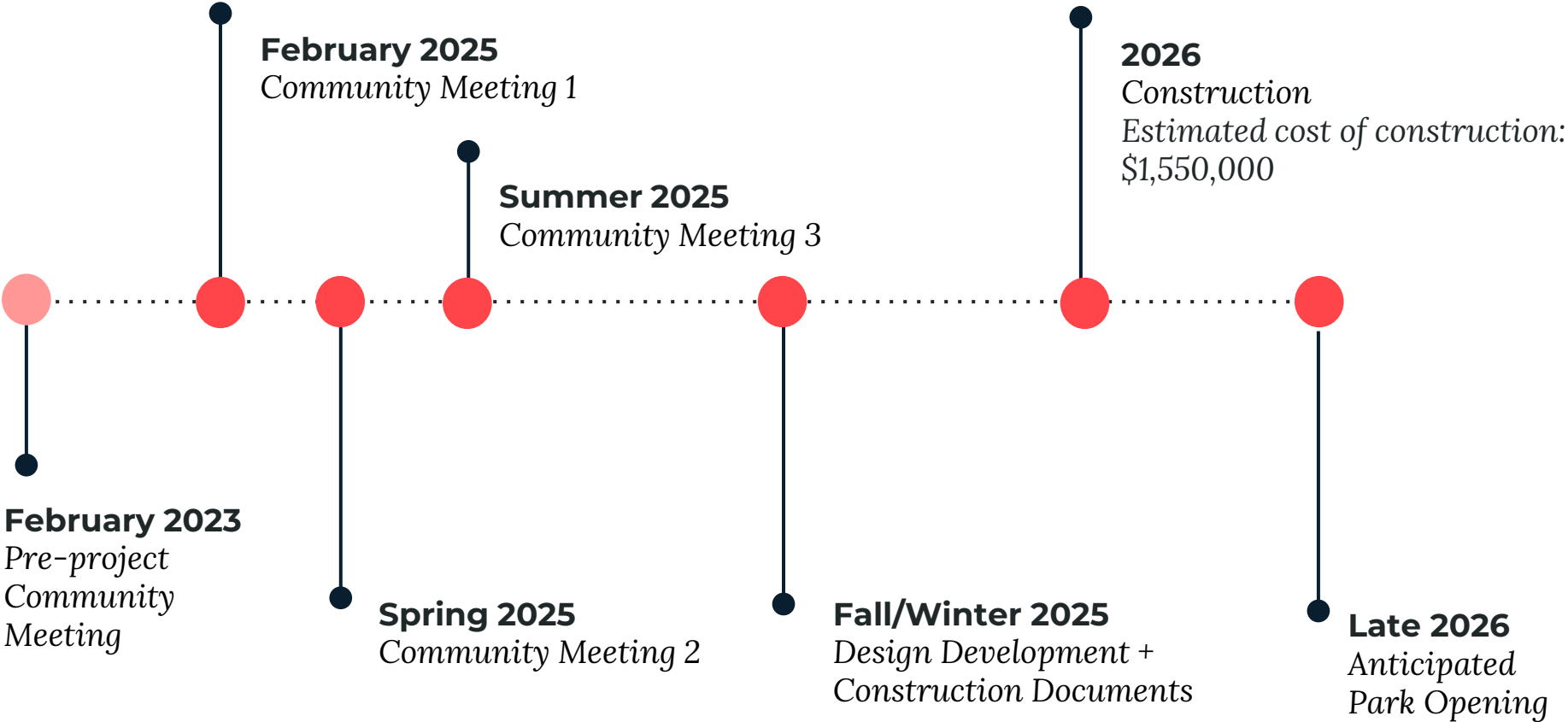
Klopfer Martin Design Group



PROJECT OVERVIEW



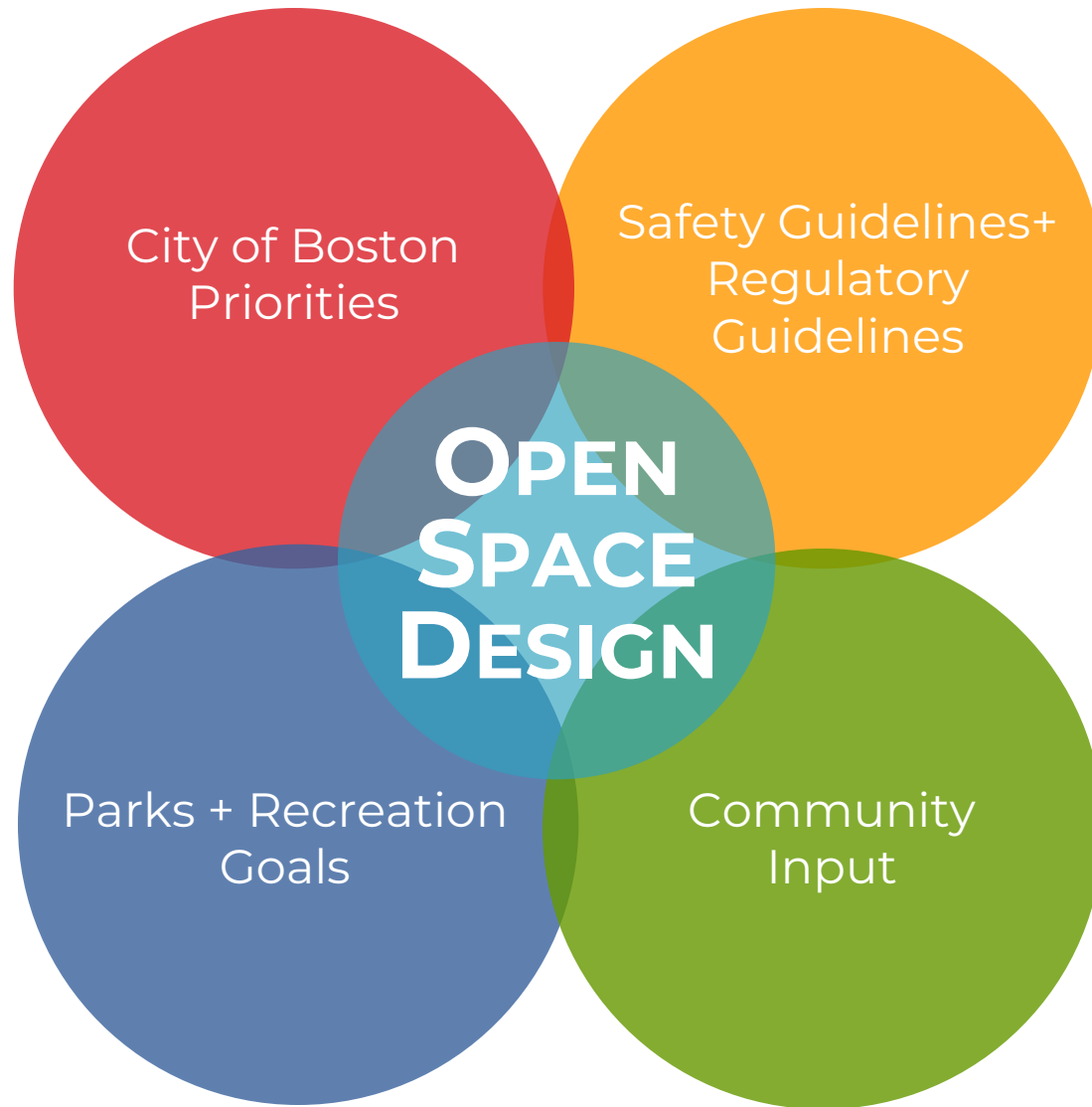
PROJECT SCHEDULE & FUNDING



COMMUNITY UPDATE

FOLLOW-UP FROM 2023 MEETING

- Eversource is not open to selling their property
- BPRD is negotiating with them on usage - agreements, insurance requirements, etc.
- Maintenance of Eversource owned areas – City cannot maintain property it doesn't own
- Encampments - Eversource is aware this is an issue
- Community input on preferred uses of site will inform the discussion about potential reclassification from “urban wild” to “park”



CITY OF BOSTON PRIORITIES

A city that is:

- **Delivering Exceptional Constituent Services**
- **Green and Growing**
- **Family Friendly**
- **Closing the Racial Wealth Gap**
- **Healthy and Safe**

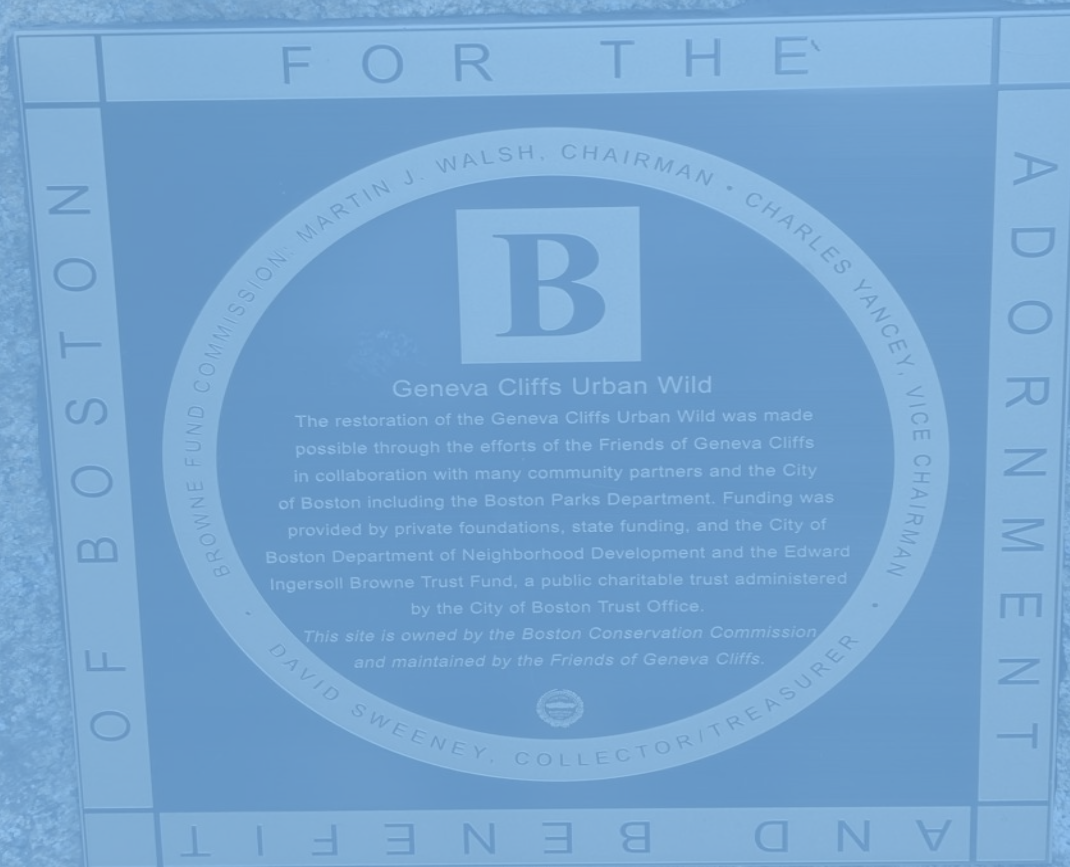


PARK & RECREATION GOALS

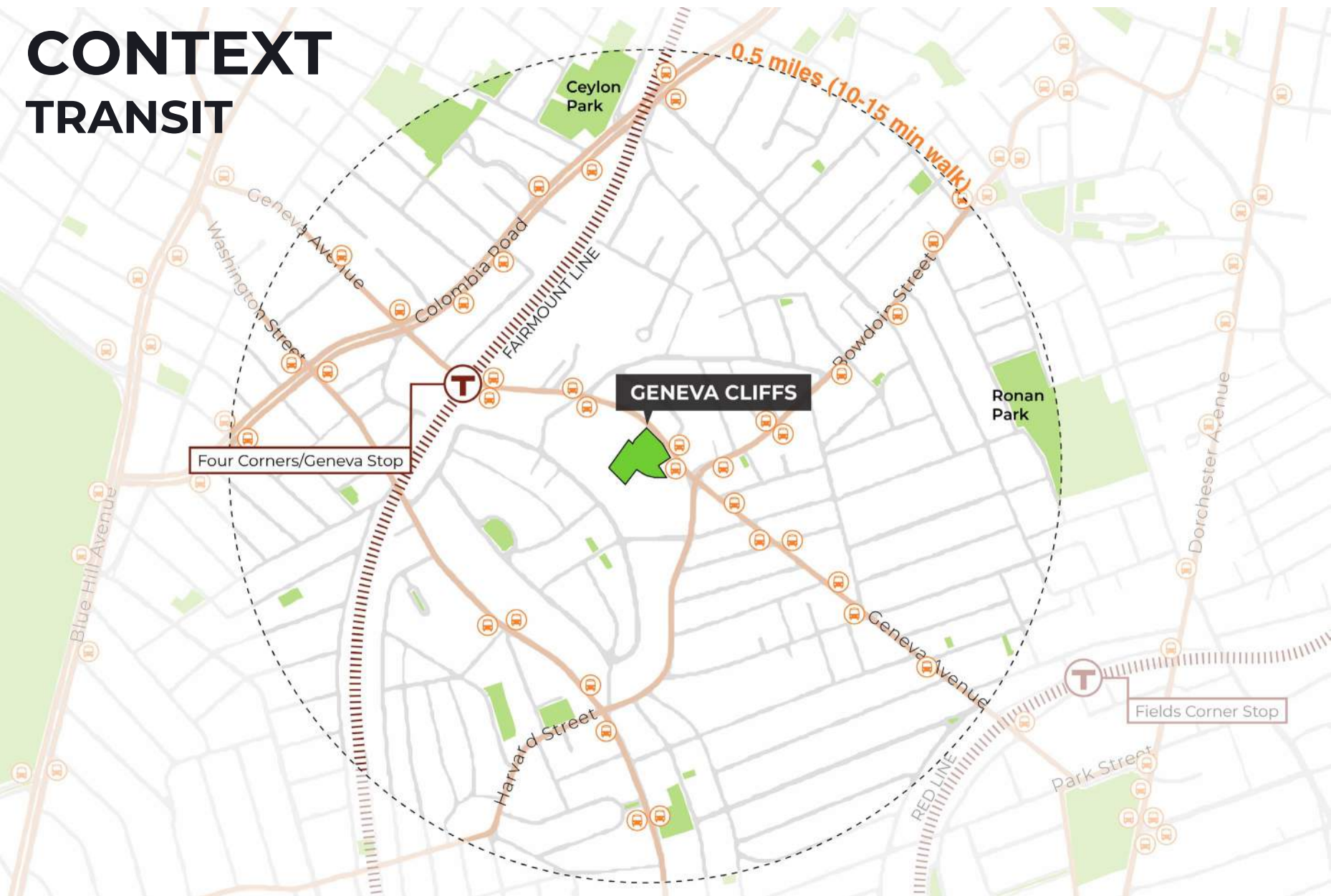
- Accessible and available to all
- Diverse, balanced, and efficient mix of uses
- Meaningful and inclusive community engagement
- Adaptive and resilient landscapes
- Promote connections




GENEVA CLIFFS CONTEXT



CONTEXT TRANSIT



LEGEND

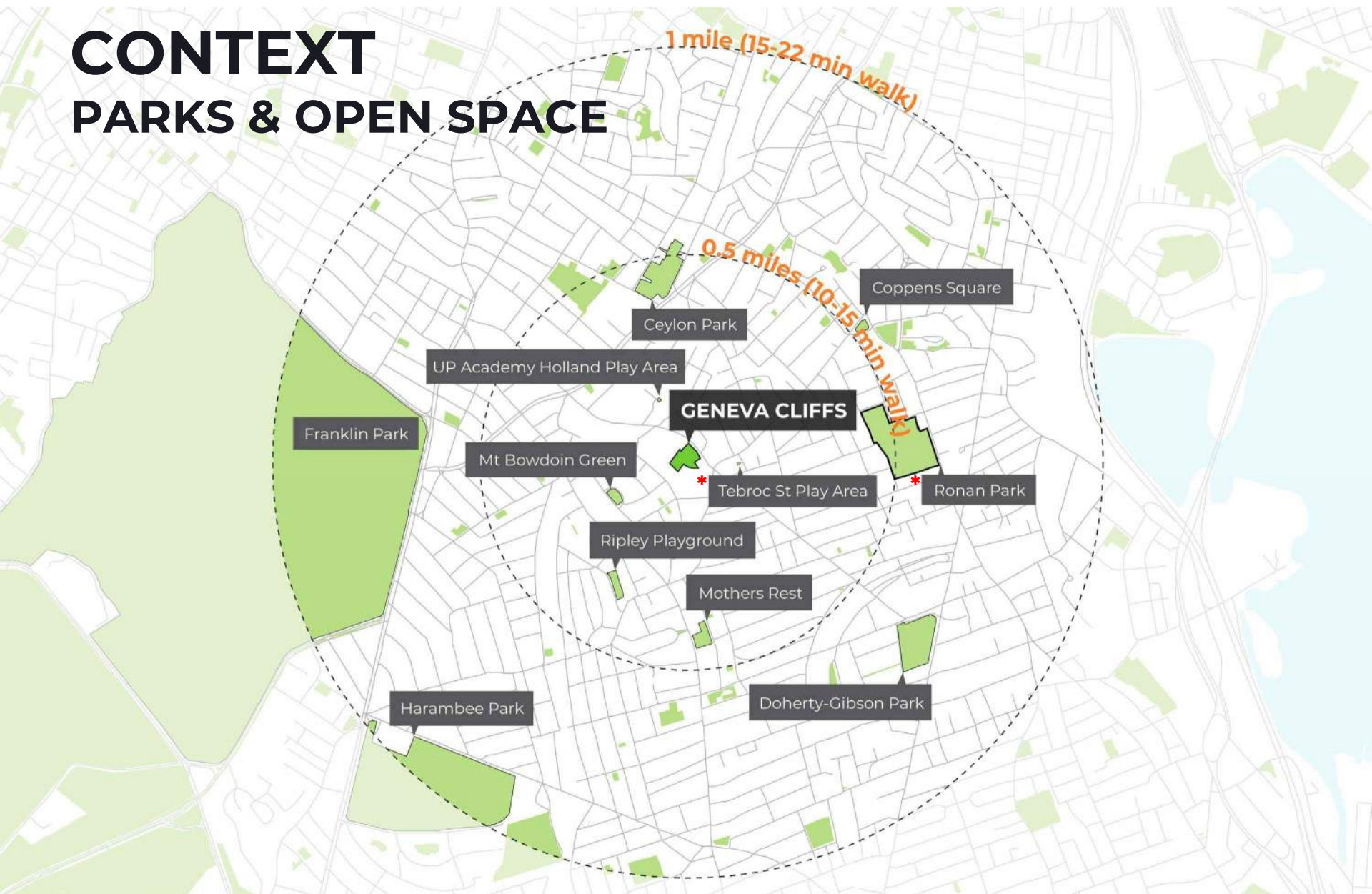
-  Open Space
-  Train Tracks

-  Bus Stops
-  Main Transit Routes



CONTEXT

PARKS & OPEN SPACE



LEGEND



Open Space (*Ronan Park, Tebroc St Play Area are also undergoing improvements)

Walking Distance Radius



CONTEXT

COMMUNITY AMENITIES



Ceylon Park



Fenelon Street Playground



Mt Bowdoin Green



Bullard Community Garden



Audrey Jacobs Comm. Garden



Ellington Street Garden



Ripley Playground



5 Arvale Road



Clayborne St Dorchester Garden

GENEVA CLIFFS

0.5 miles (10-15 min walk)

Barry Community Garden

Quincy/ Coleman Garden

Norton Street Playground

UP Academy Holland Play Area

Ronan Park

Norton & Stonehurt Comm. Garden

10 Josephine Street Garden

29 Josephine St Garden

*Tebroc Street Playlot

Mothers Rest at Four Corners

LEGEND



Open Space



Walking Distance



Play Area



Garden



Dog Park



Sport Courts



Trails



Lawn/Passive

NORTH



CONTEXT

COMMUNITY AMENITIES



GENEVA CLIFFS



0.5 miles (10-15 min walk)

LEGEND

Open Space

Walking Distance

Play Area

Garden

Dog Park

Sport Courts

Trails

Lawn/Passive

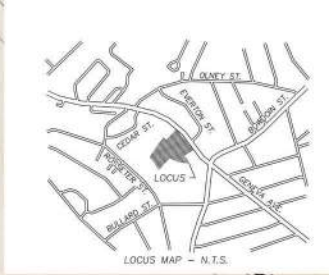




SITE HISTORY & COMMUNITY

SITE HISTORY

1836



LEGEND



Geneva Cliffs Site Boundary

NORTH



SITE HISTORY

1895



LEGEND



Geneva Cliffs Site Boundary



NORTH

SITE HISTORY | 1990s – 2000s

1990s

- Community members in the Greater Bowdoin Geneva Neighborhood Association (GBGNA) formed a working group to advocate for Geneva Cliffs
- This group grew to become the Friends of Geneva Cliffs (FoGC)



Early 2000s

- Geneva Cliffs designated as an Urban Wild with ownership by the Conservation Commission in the 2000s



2008

- FoGC advocacy work led to 2008 improvements

SITE HISTORY

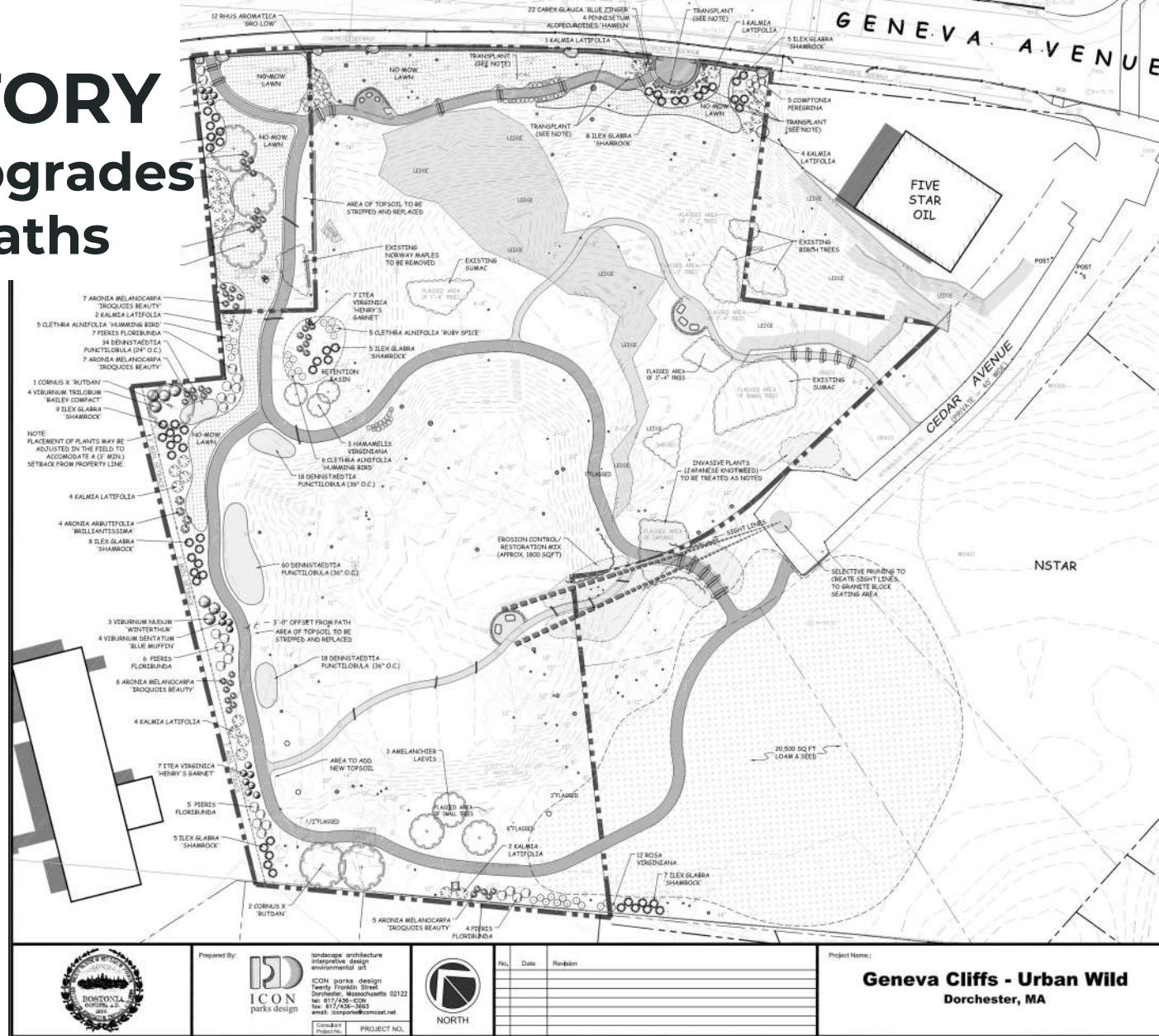
EARLY 2000's SITE CONDITIONS



SITE HISTORY

2008 Site Upgrades

Planting + Paths



LEGEND



Geneva Cliffs Site Boundary



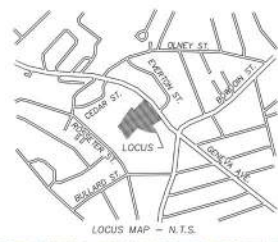
SITE HISTORY

2008 SITE IMPROVEMENTS



SITE HISTORY

2008-Present



LEGEND



Geneva Cliffs Site Boundary



COMMUNITY EVENTS



2023 COMMUNITY MEETING

FEEDBACK SUMMARY

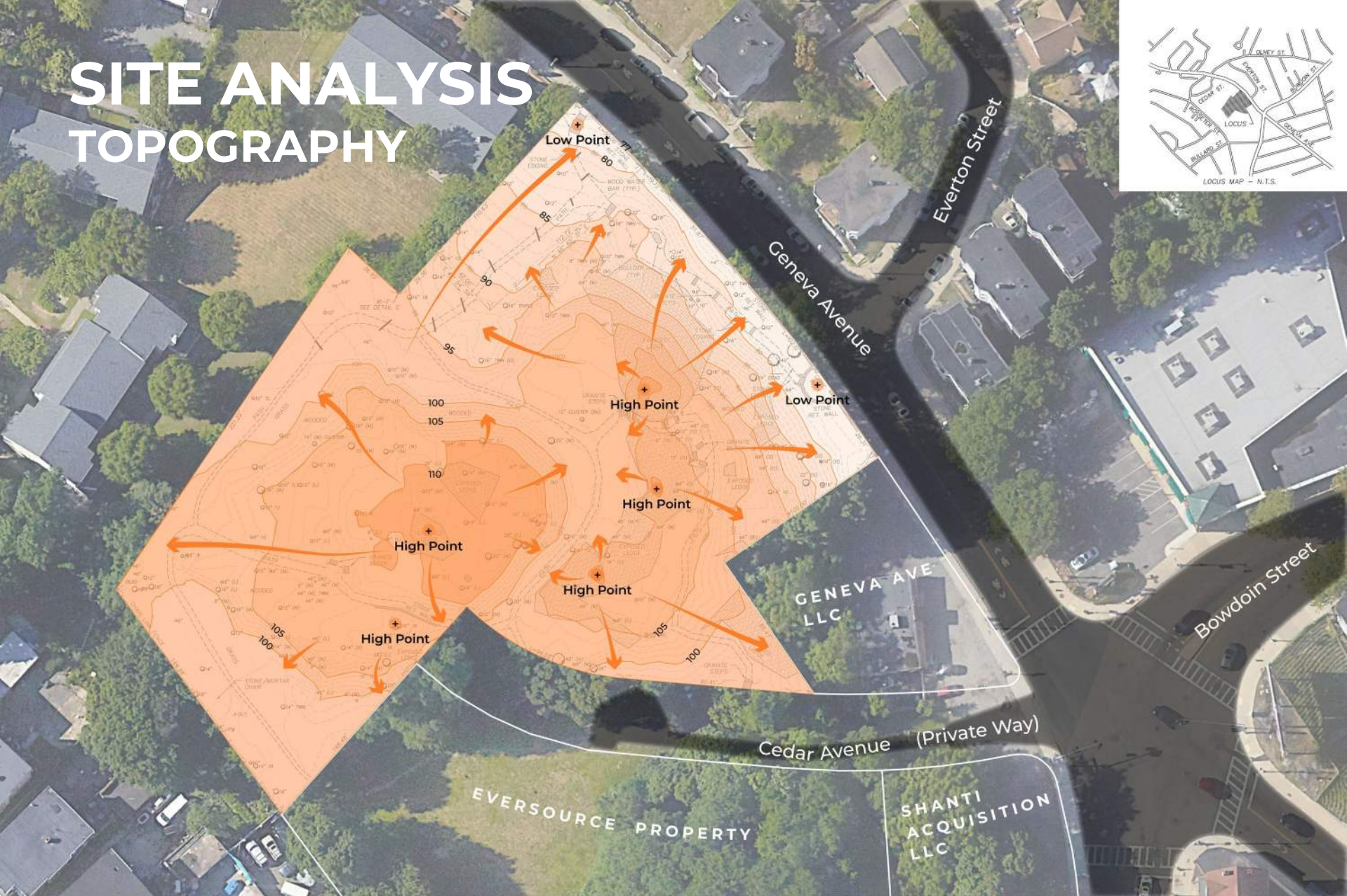
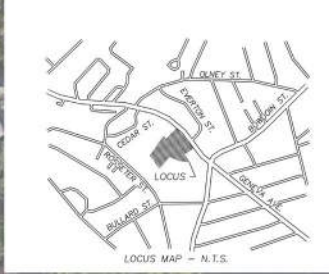
- **Interest in strategies for continued public use of Eversource parcel**
- **Keep Geneva Cliffs special and unique (not like other parks)**
- **Keep it wild, but improve maintenance, lighting, and accessibility**
- **Keep the trees and protect environmental habitats that may be present**
- **Park designation can work if Geneva Cliffs can keep its current character**

SITE ANALYSIS



SITE ANALYSIS

TOPOGRAPHY



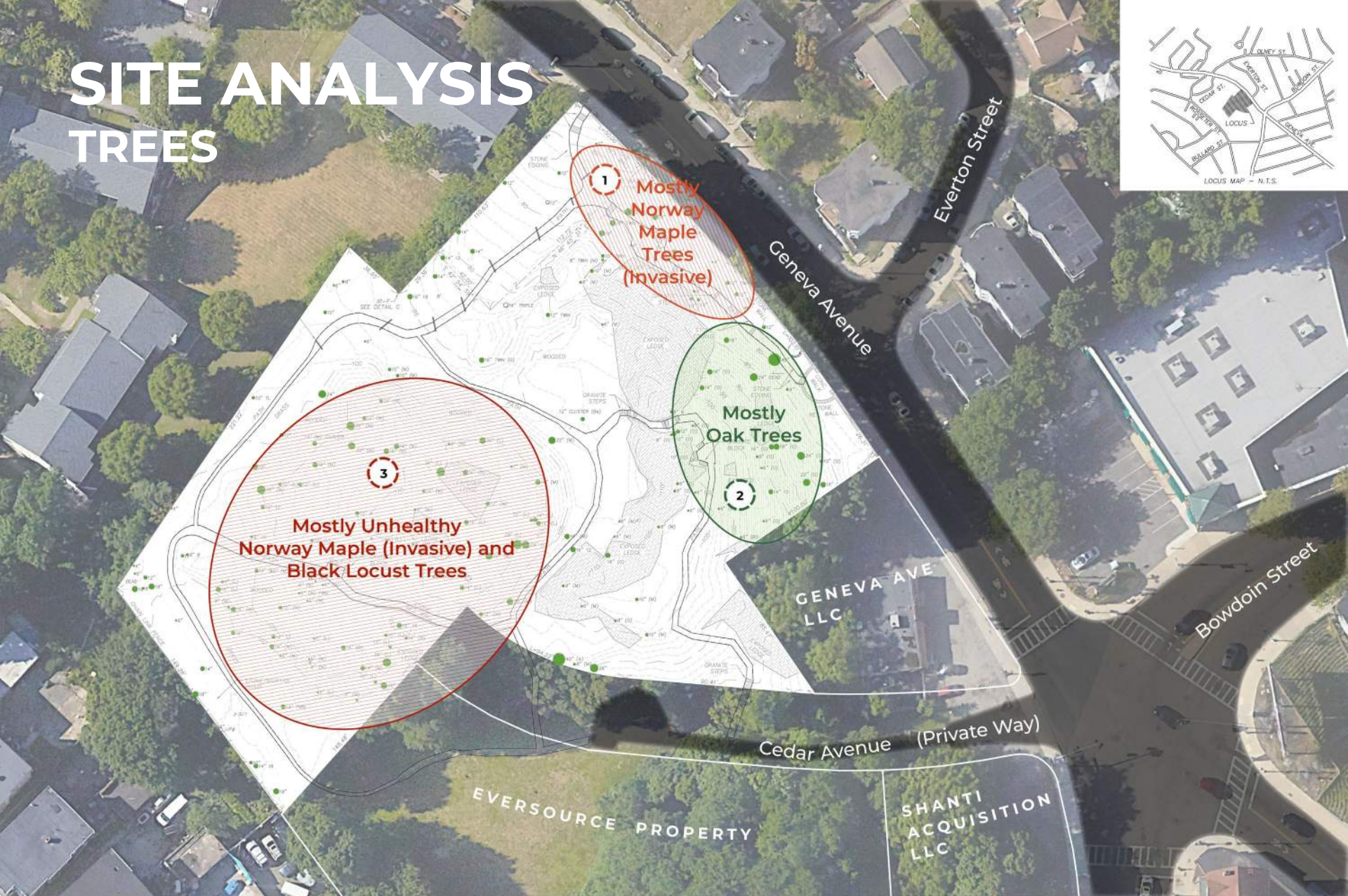
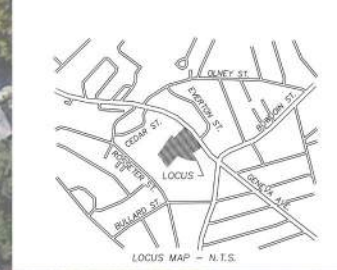
LEGEND

- 5 Foot Elevation Changes
- Stormwater Flow



SITE ANALYSIS

TREES



LEGEND



Geneva Cliffs Path



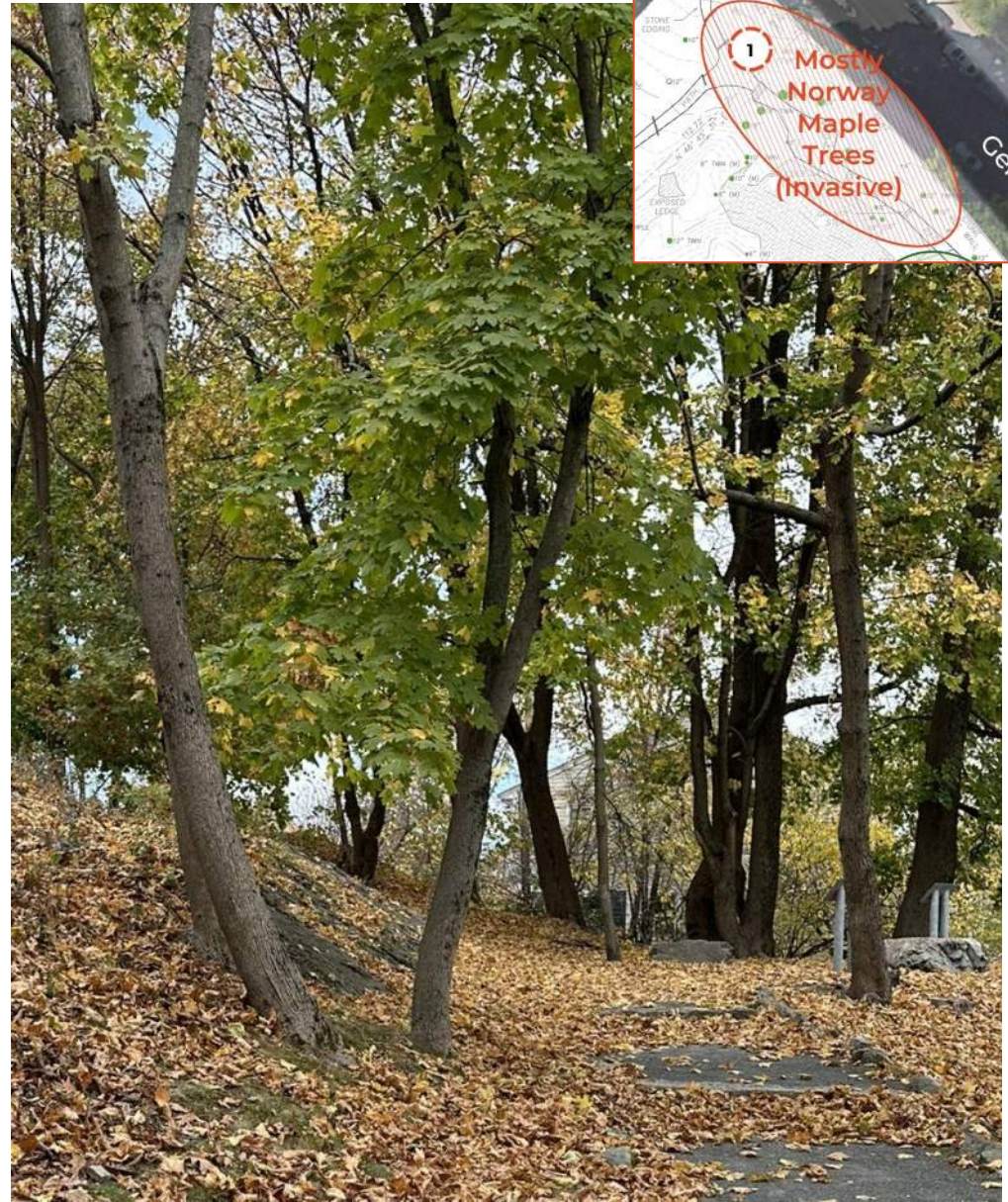
Area with trees observed to be growing in poor soil conditions

NORTH



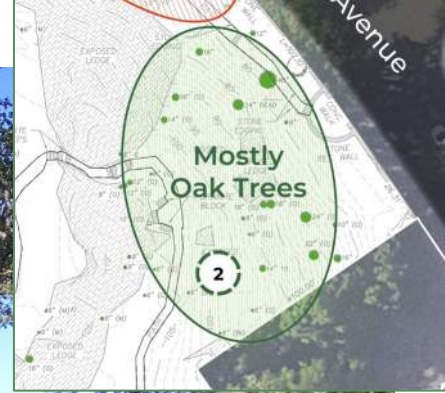
1 INVASIVE TREES

NORWAY MAPLES



2 NATIVE TREES

OAK & BIRCH



3 UNHEALTHY/INVASIVE TREES

NORWAY MAPLE & BLACK LOCUST

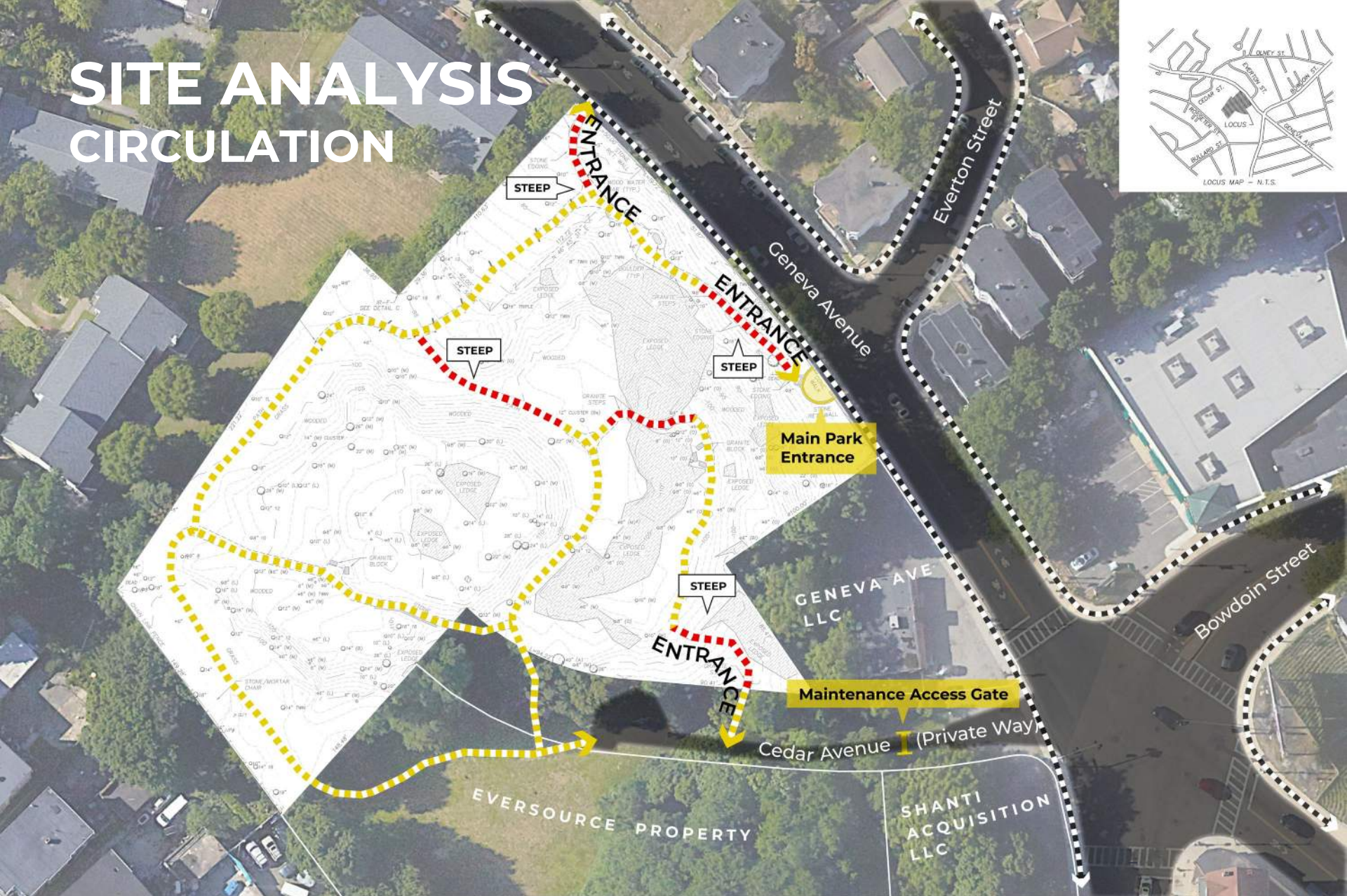
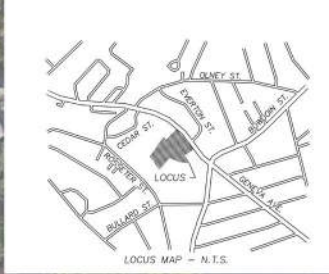


INVASIVE WEEDY UNDERSTORY

BITTERSWEET, BUCKTHORN
MUGWORT, GARLIC MUSTARD



SITE ANALYSIS CIRCULATION



LEGEND

---> Geneva Cliffs Path

--- Paths observed to be steep

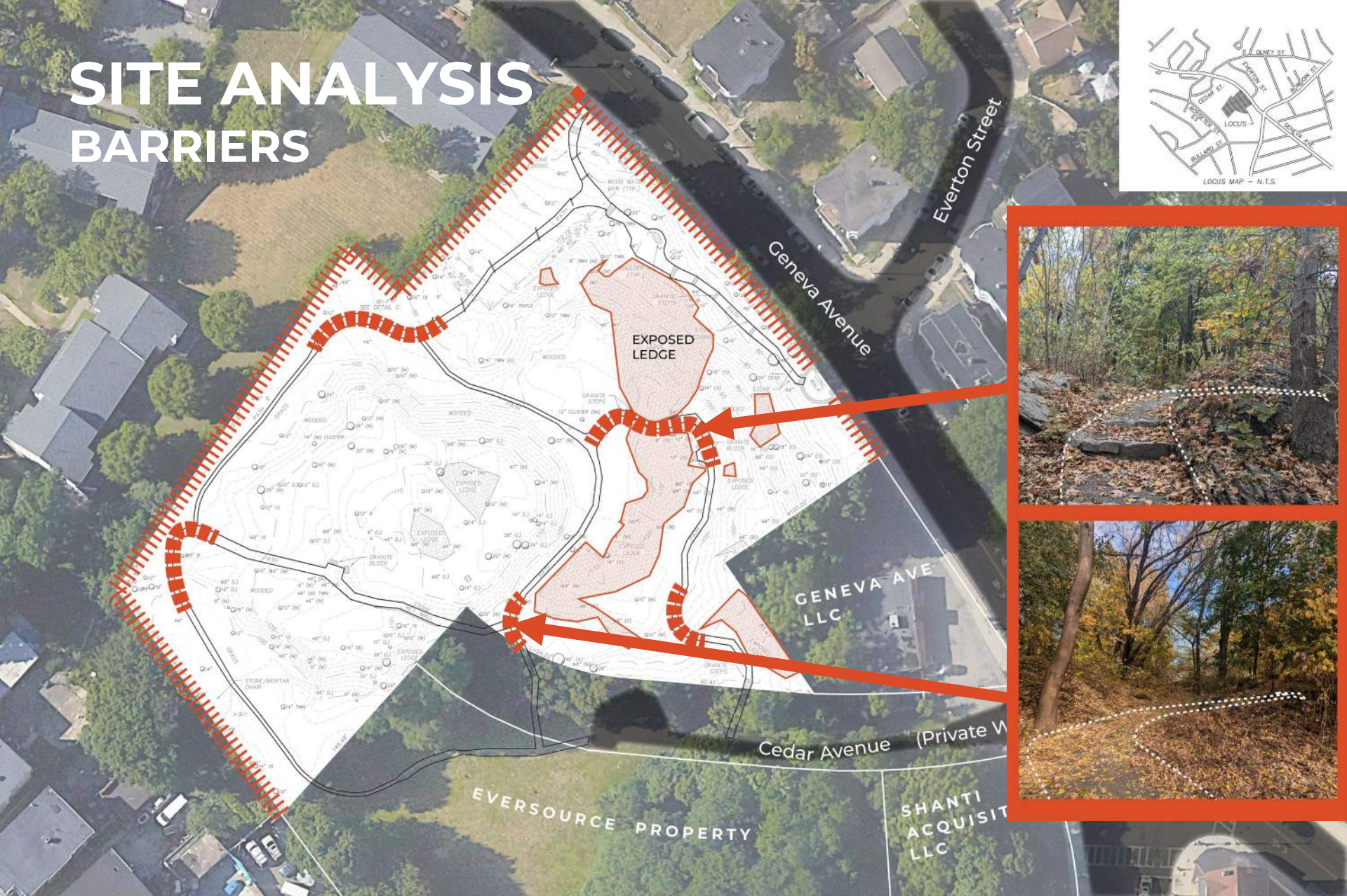
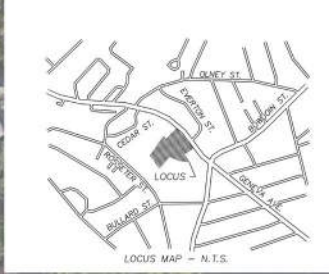
---> Sidewalk

NORTH



SITE ANALYSIS

BARRIERS



LEGEND

- Geneva Cliffs Path
- Visual Barriers (can't see around corners)
- Physical Barriers (fence, walls, and rock formations)



LISTENING & DISCUSSION

Let us know what matters to you!



DISCUSSION PROMPTS

SURVEY QUESTIONS

- What are you interested in doing at Geneva Cliffs?
- What is your first priority in improving Geneva Cliffs?
- What are your favorite features of Geneva Cliffs?

COMMUNITY SURVEY

<https://tinyurl.com/geneva-cliffs>





THANK YOU!

Next Meeting - Spring 2025

For maintenance requests or
concerns regarding any of our
parks contact 311



For questions or comments on this
project, please contact Amy Linné
amy.linne@boston.gov



February 12, 2025
Boston Parks and Recreation

