



NORTH END COMMUNITY CENTER

Community Meeting #3

March 6, 2025



Mayor Michelle Wu



City of Boston
Property Management



PMA Consultants

SASAKI



City of Boston
Public Facilities

AGENDA

- ☐ Project Team
- ☐ Project Schedule
- ☐ Community Center Program
- ☐ Site
- ☐ Traffic & Drop-off
- ☐ Questions and Feedback



Mayor Michelle Wu



City of Boston
Property Management



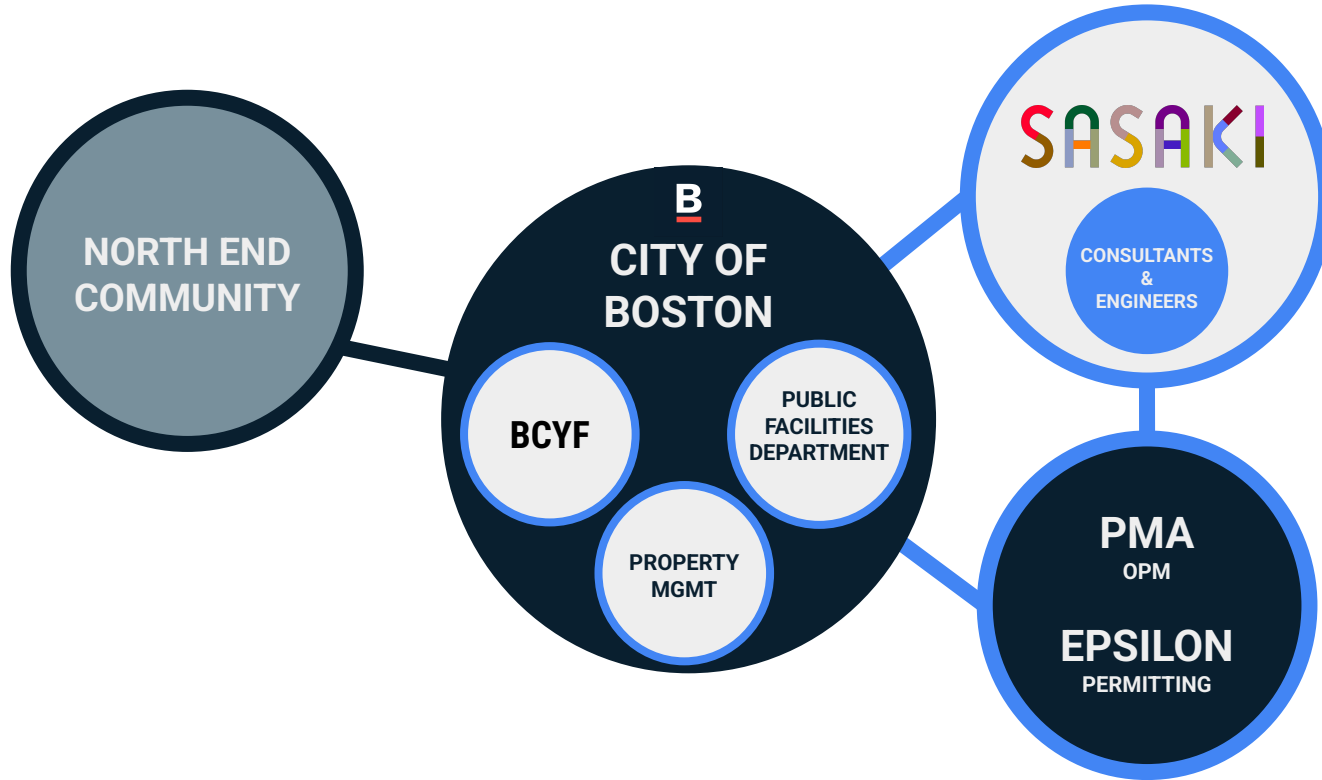
PMA Consultants

SASAKI



City of Boston
Public Facilities

PROJECT TEAM



Mayor Michelle Wu



City of Boston
Property Management



PMA Consultants

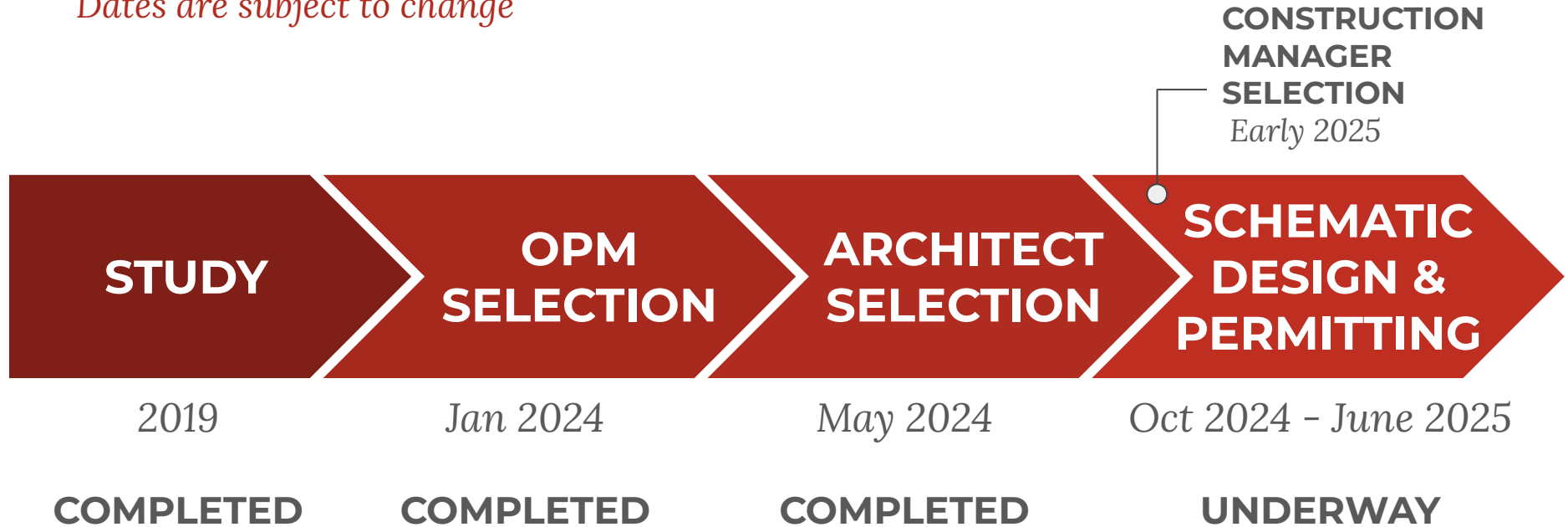
SASAKI



City of Boston
Public Facilities

PROJECT SCHEDULE

Dates are subject to change



Mayor Michelle Wu



City of Boston
Property Management



PMA Consultants

SASAKI

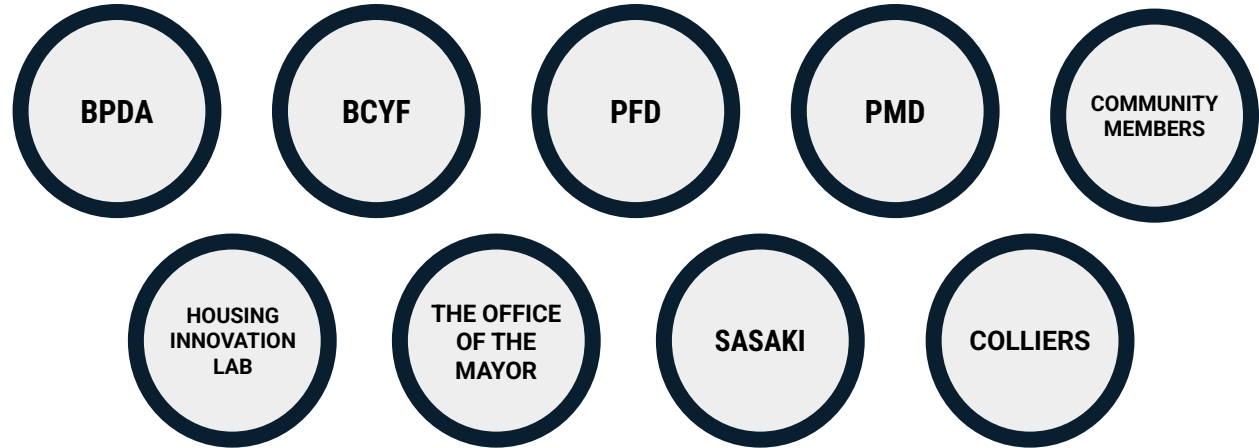


City of Boston
Public Facilities

WHAT WAS THE STUDY PROCESS?

- 2017: North End Community Center Programming Study begins.

STUDY



Mayor Michelle Wu



City of Boston
Property Management



PMA Consultants

SASAKI



City of Boston
Public Facilities

WHAT WAS THE STUDY PROCESS?

STUDY

Considerations:

- ☐ Existing Nazzaro Community Center conditions & sizing
- ☐ Programming Needs
- ☐ Renovation vs. Relocation
- ☐ Potential relocation sites
 - Location
 - Community
 - Traffic
 - Availability
 - Regulatory Processes & Constraints
 - Sea level rise vulnerability
 - Development partnerships
 - Size/site capacity
- ☐ Community engagement:
 - Meetings
 - Surveys
 - Community Advisory Committee



Mayor Michelle Wu



City of Boston
Property Management



PMA Consultants

SASAKI



City of Boston
Public Facilities

WHAT WAS THE STUDY PROCESS?

STUDY

Conclusions Made:

- ☐ Nazzaro Center is in moderately good condition.
- ☐ Ideal program needs cannot be met by the existing Nazzaro Center
- ☐ Final recommendation made:

Proceed with a new Community Center adjacent to the existing Mirabella Pool.

- ☐ 2019: North End Community Center Programming Study is Submitted



Mayor Michelle Wu



City of Boston
Property Management



PMA Consultants

SASAKI



City of Boston
Public Facilities

PROJECT SCHEDULE

Dates are subject to change



**TARGET PROJECT COMPLETION:
Feb/March 2028**

WHAT WILL BE IN THE NEW COMMUNITY CENTER?

CIVIC & COMMUNITY

Senior/Adult Program Rm
Teaching Kitchen
Multipurpose Space
Community Rooms

EDUCATION & ARTS

Multimedia Arts +
Maker Space
Flexible Classrooms
Teen Room
Music/Media Lab

SPORTS & FITNESS

Gymnasium
Cardio & Weights
Fitness/Dance
Yoga Studios
Locker Rooms
Family Changing Rooms

POOL SUPPORT

Showers/Lockers
Lifeguard Offices
First Aid
(For Outdoor Pool)

STAFF

Center Director's Office
Program Supervisor's Office
Athletic Director's Office
Meeting Room
Lunch Room



Mayor Michelle Wu



City of Boston
Property Management



PMA Consultants

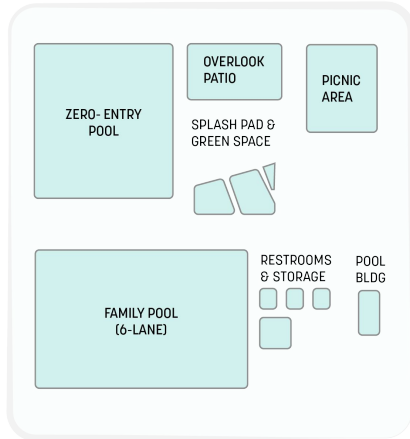
SASAKI



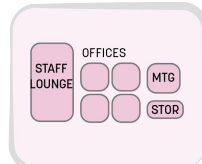
City of Boston
Public Facilities

PROGRAM ELEMENTS AT A GLANCE

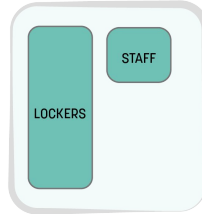
POOL (OUTDOOR)



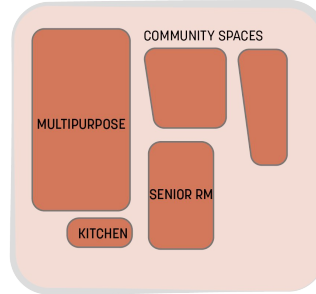
STAFF



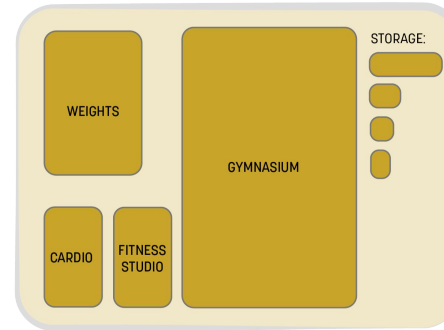
POOL SUPPORT



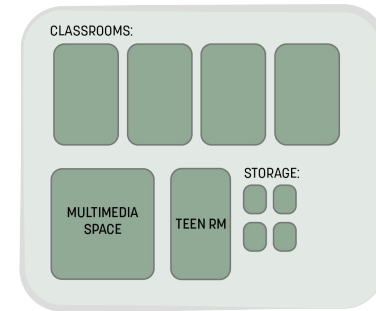
COMMUNITY



SPORTS / FITNESS



EDUCATION & ARTS



OVERALL BUILDING: 54,500 SQ FT



Mayor Michelle Wu



City of Boston
Property Management



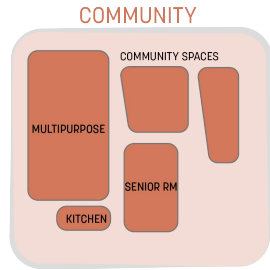
PMA Consultants

SASAKI



City of Boston
Public Facilities

PROGRAM ELEMENTS AT A GLANCE



Mayor Michelle Wu



City of Boston
Property Management



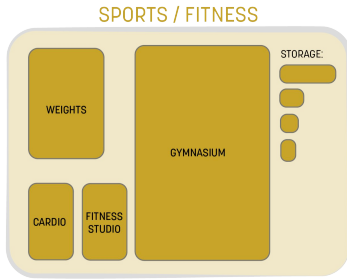
PMA Consultants

SASAKI



City of Boston
Public Facilities

PROGRAM ELEMENTS AT A GLANCE



Mayor Michelle Wu



City of Boston
Property Management



PMA Consultants

SASAKI



City of Boston
Public Facilities

PROGRAM ELEMENTS AT A GLANCE

EDUCATION & ARTS

CLASSROOMS:

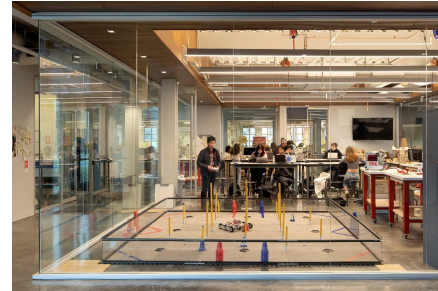


MULTIMEDIA
SPACE

TEEN RM



STORAGE:



Mayor Michelle Wu



City of Boston
Property Management



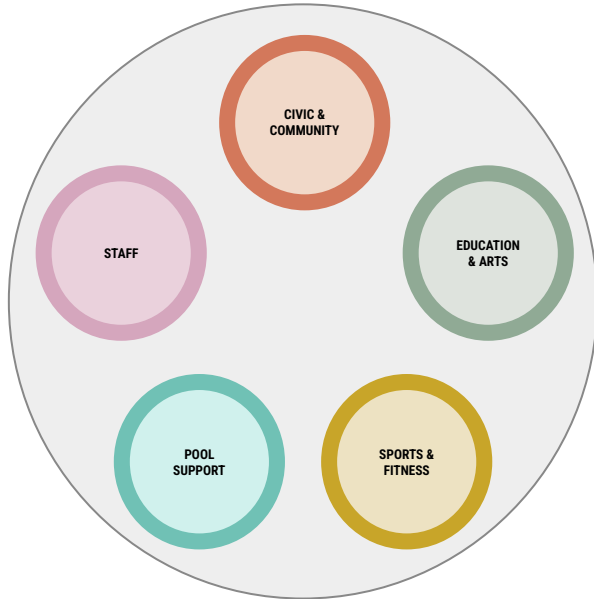
PMA Consultants

SASAKI



City of Boston
Public Facilities

COMMUNITY EXPERIENCES



YOGA ENTHUSIAST

A YOUNG ADULT COMES TO YOGA CLASS AFTER WORK. THEY CATCH UP WITH A NEIGHBOR IN THE HALLWAY.



RETIRED COUPLE

A COUPLE COMES TO JOIN A COOKING CLASS. ONE SEES A SKETCH CLASS AND DECIDES TO ENROLL. THE OTHER SEES YOGA MATS AND INQUIRES ABOUT SCHEDULE.



ACTIVE FAMILY

A FAMILY VISITING THE OUTDOOR POOL & SPLASH PAD ON A SATURDAY TO COOL OFF. THEY SEE POSTINGS FOR SWIM CLASSES AND WATER AEROBICS COMING UP!



SPORTS FANATICS

A PARENT & CHILD COME TO A BASKETBALL GAME ON A SATURDAY. THEY SEE THAT THERE IS A CELTICS WATCH PARTY IN THE MULTIPURPOSE SPACE LATER THAT WEEK AND PLAN TO JOIN.



PROACTIVE CITIZEN

A MEMBER OF THE COMMUNITY ATTENDS A MEETING ON A WEEKNIGHT. THEY SEE THE KITCHEN AND ANNOUNCEMENTS FOR AN UPCOMING COOKING CLASS.



CREATIVE TEEN

A TEENAGER VISITING AFTER SCHOOL TO WORK IN THE MULTIMEDIA ROOM. THEY SEE THE WEIGHT ROOM AND DECIDES TOMORROW IS A GOOD DAY TO CHECK IT OUT.



ELEMENTARY-AGED KIDS

A GROUP OF STUDENTS FROM A LOCAL SCHOOL COMES TO AN AFTER-SCHOOL PROGRAM. THEY SEE THE OLDER KIDS HEADED TO THE MULTIMEDIA SPACE AND BECOME INSPIRED.



Mayor Michelle Wu



City of Boston
Property Management



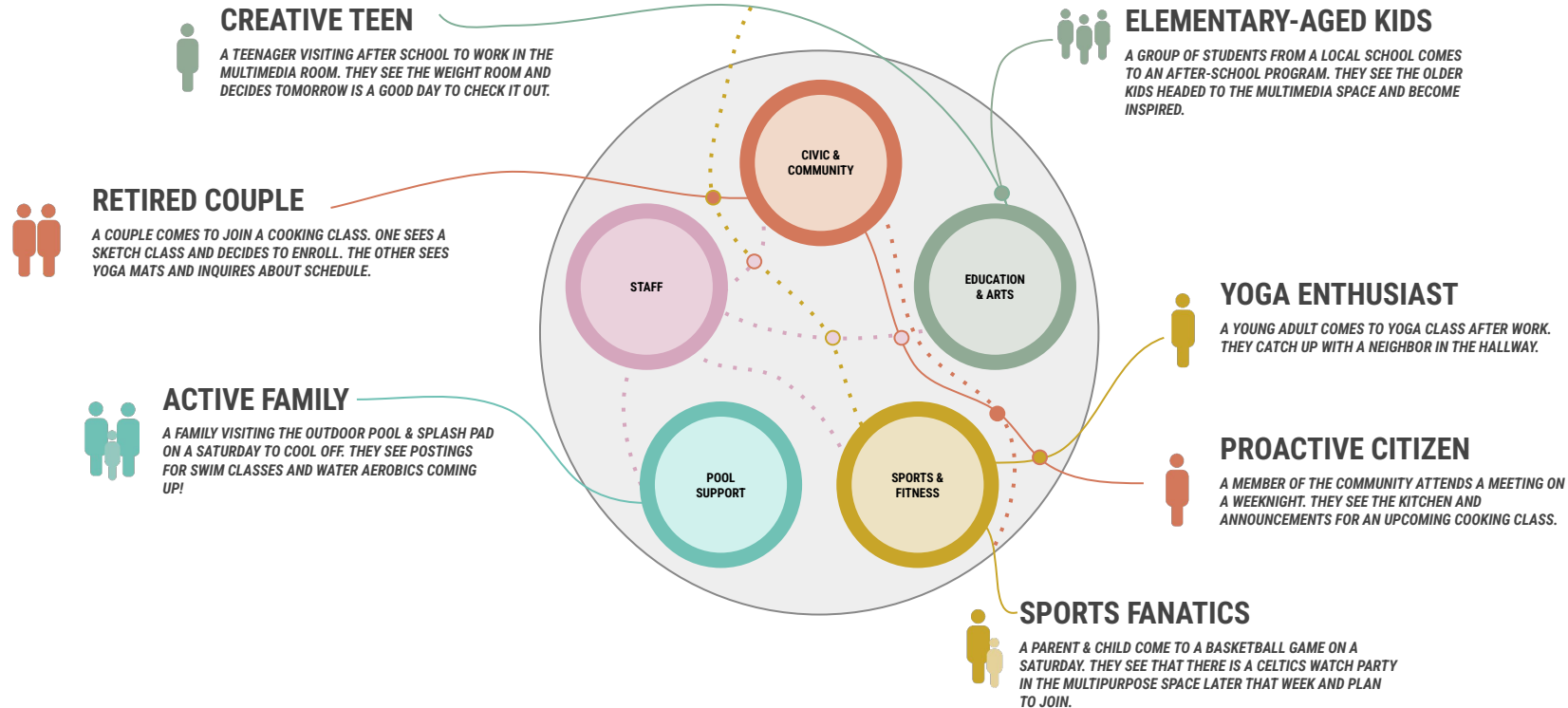
PMA Consultants

SASAKI



City of Boston
Public Facilities

COMMUNITY EXPERIENCES



Mayor Michelle Wu



City of Boston
Property Management



PMA Consultants

SASAKI



City of Boston
Public Facilities

EXPERIENCE OF THE SPACE



YOGA ENTHUSIAST

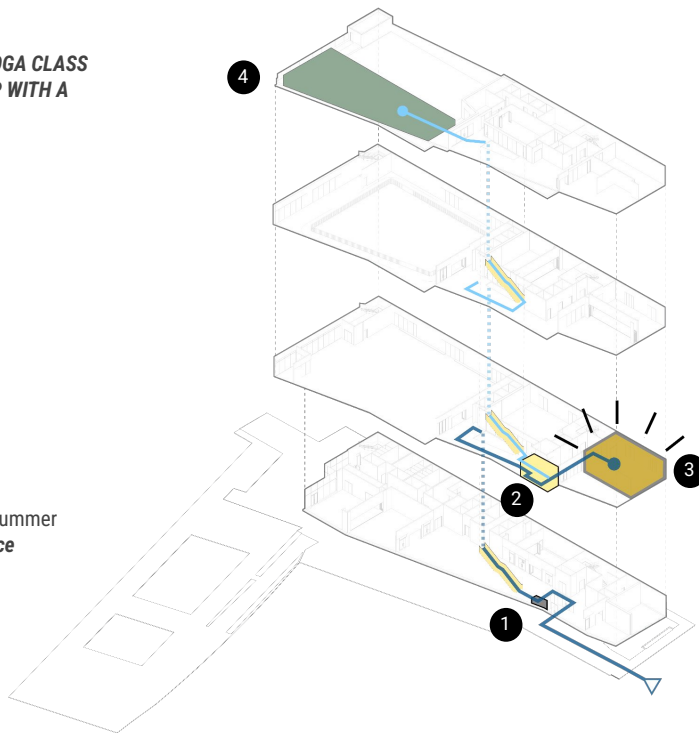
A YOUNG ADULT COMES TO YOGA CLASS AFTER WORK. THEY CATCH UP WITH A NEIGHBOR IN THE HALLWAY.

Primary Destinations

- 1 Check in at *Reception*
- 2 Chat with a friend in *Corridor Spill-Out Spaces*
- 3 Meet for Yoga class at the *Fitness Studio*

Secondary Destinations

- 4 Meet for Yoga class in the summer at the *The Community Terrace*



"It's so nice to have a yoga studio within walking distance from my home!"



Mayor Michelle Wu



City of Boston
Property Management



PMA Consultants

SASAKI



City of Boston
Public Facilities

EXPERIENCE OF THE SPACE



RETIRED COUPLE

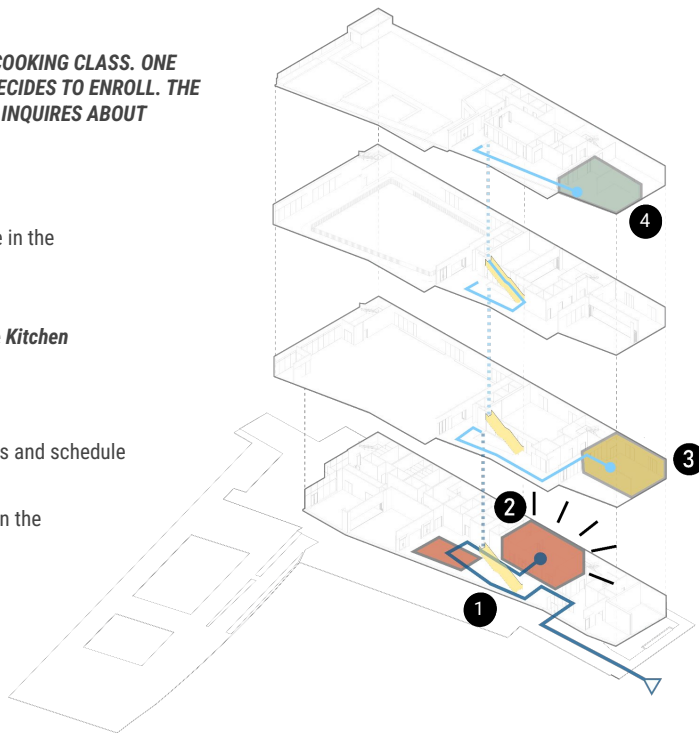
A COUPLE COMES TO JOIN A COOKING CLASS. ONE SEES A SKETCH CLASS AND DECIDES TO ENROLL. THE OTHER SEES YOGA MATS AND INQUIRES ABOUT SCHEDULE.

Primary Destinations

- 1 Say 'Hello' to another couple in the **Lobby & Community Spaces**
- 2 Find a workstation in the **Senior Room** adjacent to the **Kitchen**

Secondary Destinations

- 3 Take a look at the Yoga class and schedule in the **Fitness Studio**
- 4 Observe a class being held in the **Art & Maker Space**.



"There's so much offered here,
I can't wait to see what our next
class will be!"



Mayor Michelle Wu



City of Boston
Property Management



PMA Consultants

SASAKI



City of Boston
Public Facilities

EXPERIENCE OF THE SPACE



ACTIVE FAMILY

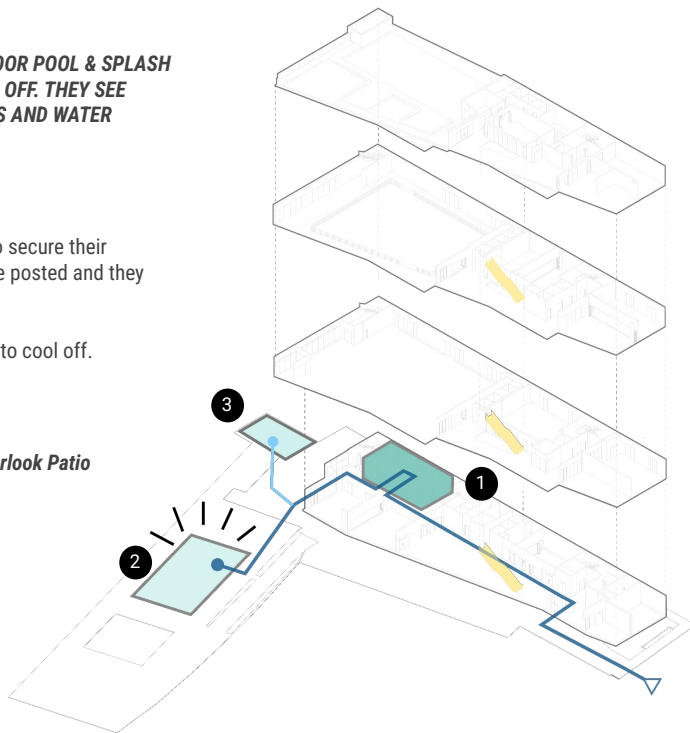
A FAMILY VISITING THE OUTDOOR POOL & SPLASH PAD ON A SATURDAY TO COOL OFF. THEY SEE POSTINGS FOR SWIM CLASSES AND WATER AEROBICS COMING UP!

Primary Destinations

- 1 Stop by the **Locker Rooms** to secure their belongings. New classes are posted and they are excited to come back!
- 2 Head out to the **Family Pool** to cool off.

Secondary Destinations

- 3 Spend some time at the **Overlook Patio** watching boat traffic.



"We're so happy to see the Mirabella Pool so vibrant, kid-friendly, and full of activity!"



Mayor Michelle Wu



City of Boston
Property Management



PMA Consultants

SASAKI



City of Boston
Public Facilities

EXPERIENCE OF THE SPACE



SPORTS FANATICS

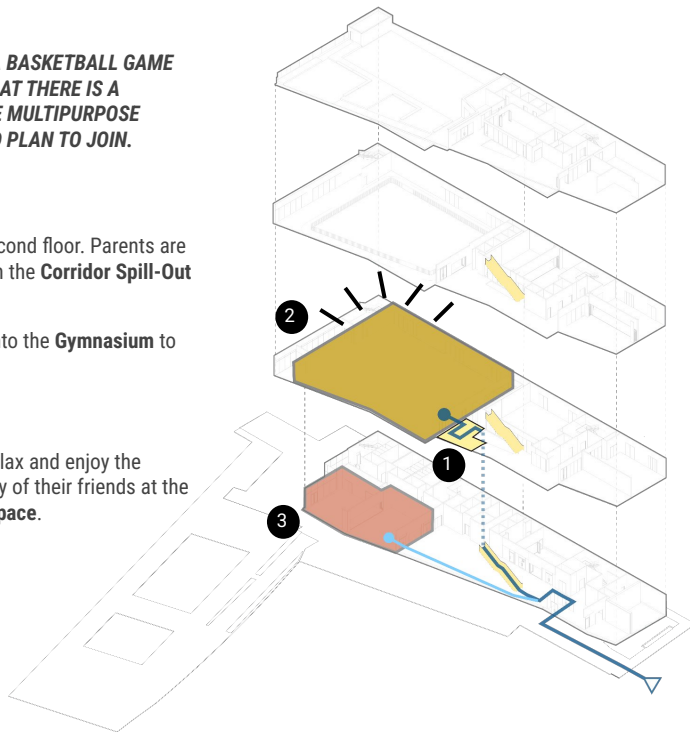
A PARENT & CHILD COME TO A BASKETBALL GAME ON A SATURDAY. THEY SEE THAT THERE IS A CELTICS WATCH PARTY IN THE MULTIPURPOSE SPACE LATER THAT WEEK AND PLAN TO JOIN.

Primary Destinations

- 1 Head up the stairs to the second floor. Parents are milling about and chatting in the **Corridor Spill-Out Spaces**.
- 2 Everyone makes their way into the **Gymnasium** to watch the game!

Secondary Destinations

- 3 Return a few days later to relax and enjoy the Celtics game in the company of their friends at the **Multipurpose Community Space**.



"Wow, this new gym is so much larger than the Nazzaro! Finally, a regulation-size court!"



Mayor Michelle Wu



City of Boston
Property Management



PMA Consultants

SASAKI



City of Boston
Public Facilities

EXPERIENCE OF THE SPACE



ELEMENTARY-AGED KIDS

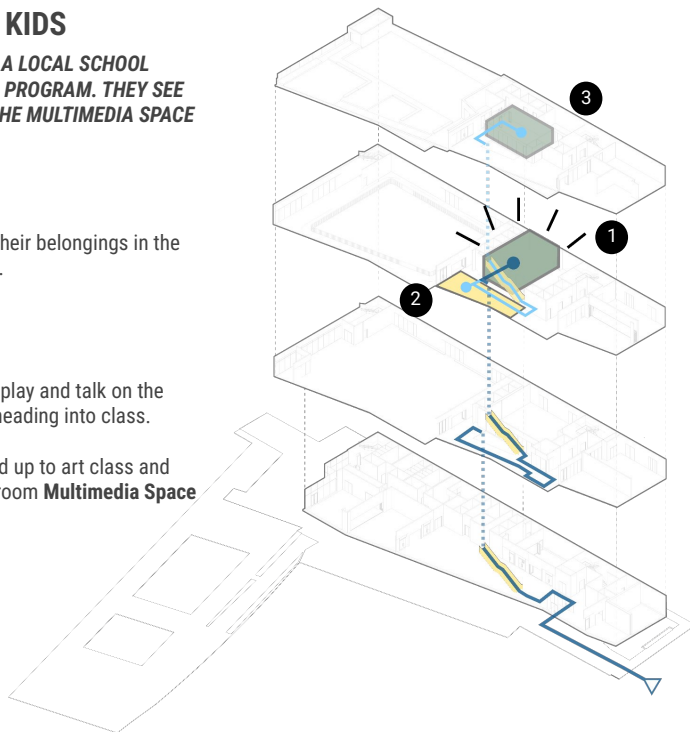
A GROUP OF STUDENTS FROM A LOCAL SCHOOL COMES TO AN AFTER-SCHOOL PROGRAM. THEY SEE THE OLDER KIDS HEADED TO THE MULTIMEDIA SPACE AND BECOME INSPIRED.

Primary Destinations

- 1 Students arrive and secure their belongings in the **Classroom** on the third floor.

Secondary Destinations

- 2 Some students take time to play and talk on the **Bench** by the **Stairs** before heading into class.
- 3 Others see older kids headed up to art class and decide to go see where the room **Multimedia Space** is!



"I really enjoy getting to spend time with my friends after school."



Mayor Michelle Wu



City of Boston
Property Management



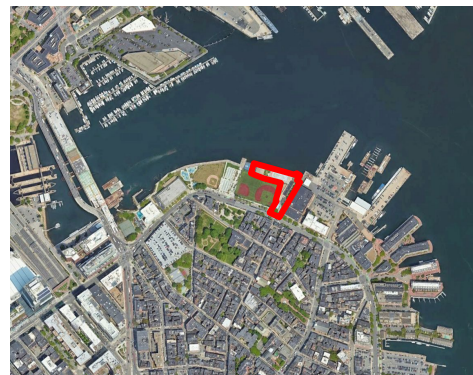
PMA Consultants

SASAKI



City of Boston
Public Facilities

Selected Site Location



Mayor Michelle Wu



City of Boston
Property Management



PMA Consultants

SASAKI

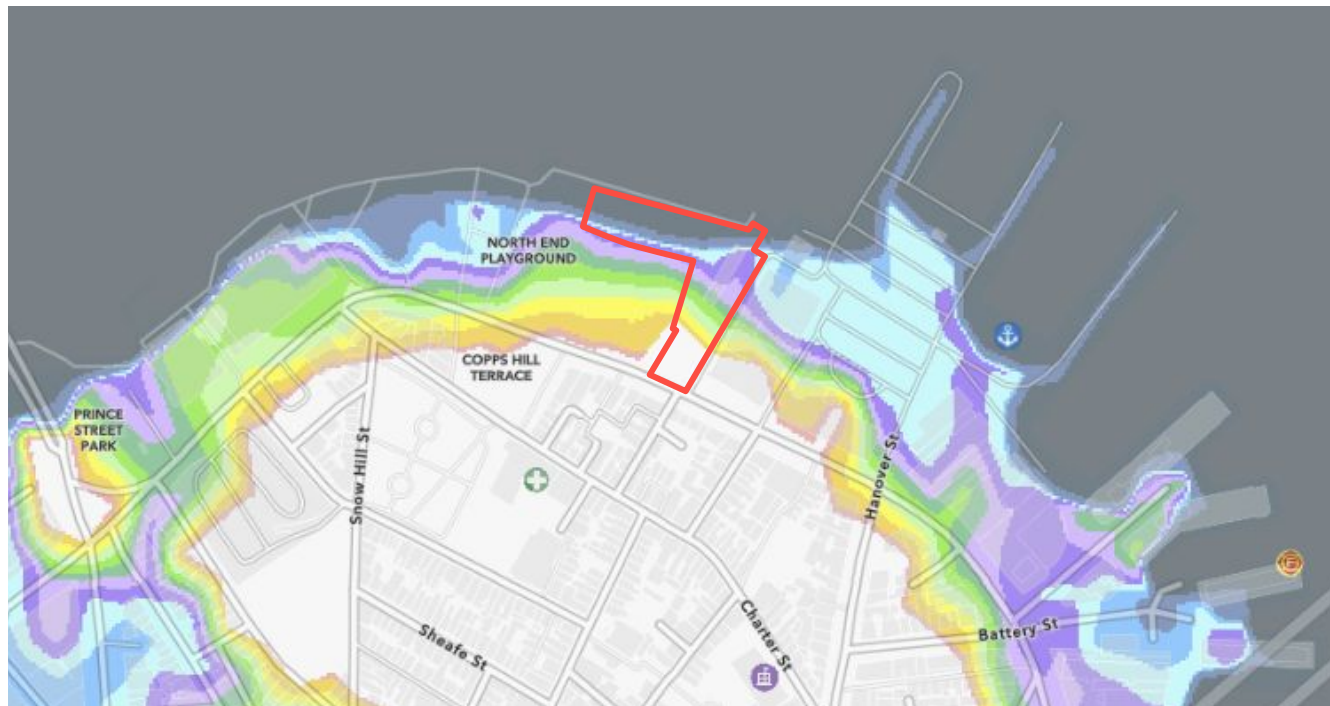
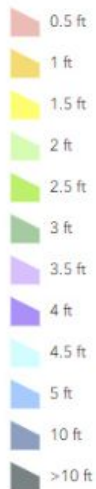


City of Boston
Public Facilities

Sea Level Rise Impact

2070 Massachusetts Coast Flood Risk Model
(MC-FRM)

Flood Depths for 1% ACFEP



Mayor Michelle Wu



City of Boston
Property Management



PMA Consultants

SASAKI



City of Boston
Public Facilities

Site Plan

Proposed Program Concept

2 Pools:

- Family Pool = 3,750 sf
- Zero-entry pool = 2,250 sf

Splash Pad = 4,000 sf

Pool Deck = 10,200 sf

Open Space = 10,000 sf

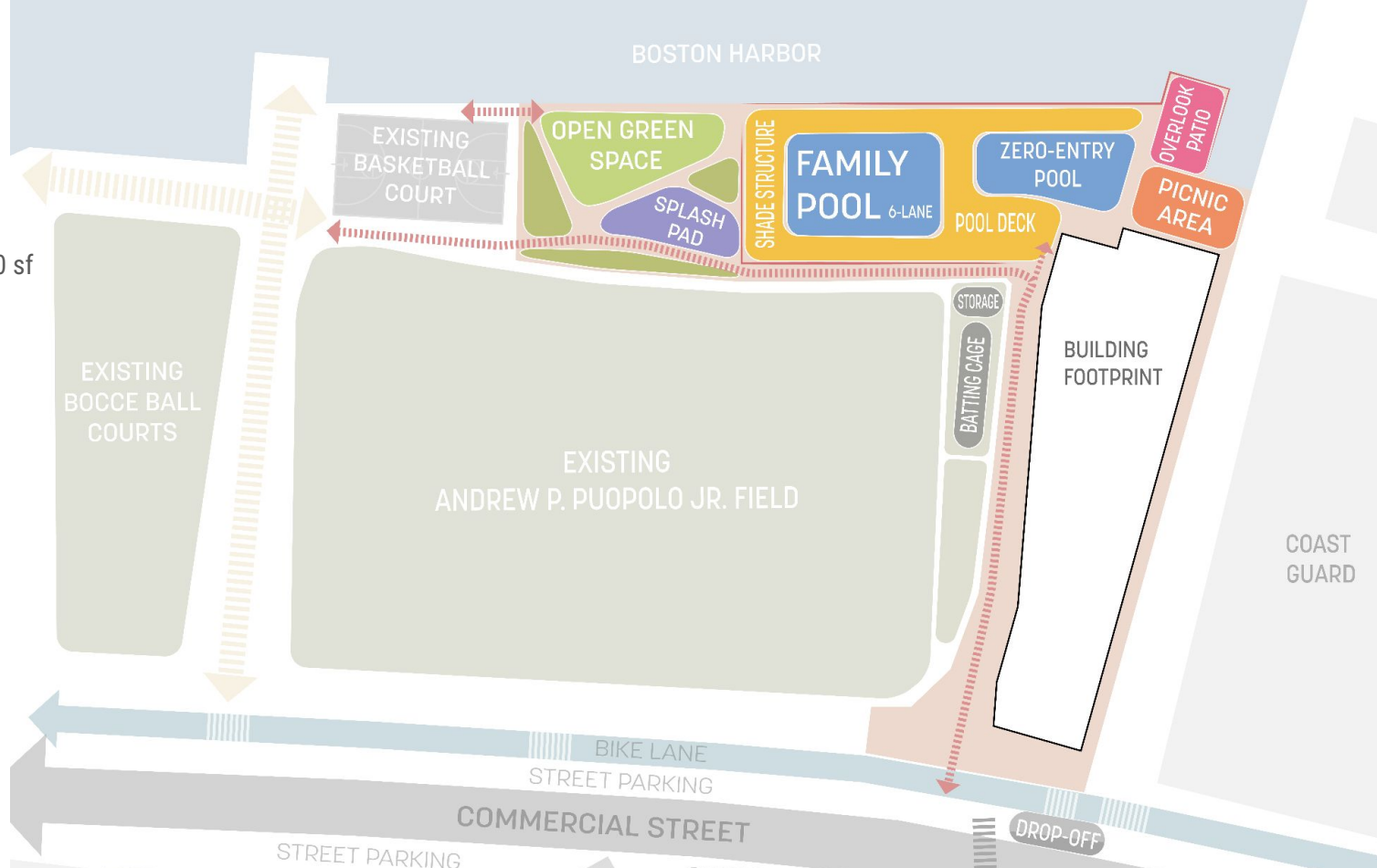
Existing Pool Facility

2 Pools:

- Lap Pool = 6,800 sf
- Diving Pool = 2,450 sf

Splash Pad = 3,200 sf

Pool Deck = 14,250 sf



Mayor Michelle Wu



City of Boston
Property Management



PMA Consultants

SASAKI



City of Boston
Public Facilities

Precedent Images



Mayor Michelle Wu



City of Boston
Property Management



PMA Consultants

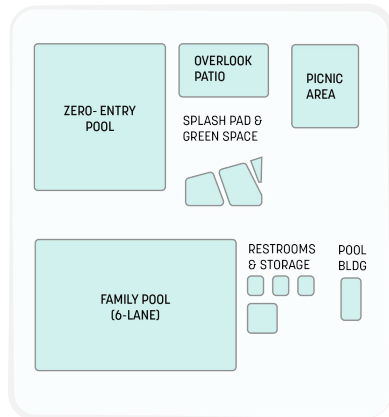
SASAKI



City of Boston
Public Facilities

Precedent Images

POOL (OUTDOOR)



BCYF Clougherty Pool



Mayor Michelle Wu



City of Boston
Property Management



PMA Consultants

SASAKI



City of Boston
Public Facilities

The Existing Mirabella Pool



Mayor Michelle Wu



City of Boston
Property Management



PMA Consultants

SASAKI



City of Boston
Public Facilities

Traffic & Drop-off

- Traffic study in progress
- Project team will work with
BTD to identify the best &
safest options for drop-off
- Prioritize drop-off, not
parking
- Emergency access is
provided



Mayor Michelle Wu



City of Boston
Property Management



PMA Consultants

SASAKI



City of Boston
Public Facilities

NEXT STEPS

Dates are subject to change

**PROJECT
STARTUP**

**DEVELOP DESIGN:
FLOOR PLANS,
INTERIOR +
EXTERIOR DESIGN**

**DETAILED
DESIGN
DOCUMENTATION**

**COMMUNITY
MTG #1**
April 2, 2024

**COMMUNITY
MTG #2**
Dec 9, 2024

**COMMUNITY
MTG #3**
March 6, 2025

**FUTURE
COMMUNITY MTG**
Summer 2025



We are here



Mayor Michelle Wu



City of Boston
Property Management



PMA Consultants

SASAKI



City of Boston
Public Facilities

QUESTIONS + FEEDBACK

NEW COMMUNITY CENTER

*Future feedback or questions
may be directed to:*

STACEY CHAPMAN

Sasaki Project Manager
schapman@sasaki.com

EXISTING NAZZARO CENTER

*Future feedback or questions
may be directed to:*

CITY OF BOSTON

PROPERTY MANAGEMENT DEPT
(617) 635-4100



Mayor Michelle Wu



City of Boston
Property Management



PMA Consultants

SASAKI



City of Boston
Public Facilities