

A photograph of Ronan Park in Boston, featuring a large tree on the left, a playground in the middle ground, and residential buildings in the background under a clear blue sky.

Designing the future of **RONAN PARK**

The meeting will begin shortly...



MEETING RECORDING



The Boston Parks and Recreation Department will be recording the meeting and posting to our project webpage for those who are unable to attend the Zoom meeting live.

It is possible that participants may also be recording the meeting with their phones cameras or other devices. If you do not wish to be recorded during this meeting, please keep your microphone muted and camera off.

*Please share with your neighbors and friends,
www.boston.gov/ronan-park*

VIRTUAL MEETING ETIQUETTE

We want to ensure this conversation is a pleasant experience for all and that all community members/stakeholders are comfortable sharing their comments, questions and feedback.

Please be respectful and mindful of each other's time when asking questions/ providing comments, so that all attendees are able to participate in the meeting.

Keep questions/ comments project-specific and not personal to yield solution-driven discussion.

Please wait until all attendees have had the opportunity to ask a question/ provide a comment before providing additional questions/ comments.

*You can always set up a conversation with **Kezia Ofiesh**, kezia.ofiesh@boston.gov, to further discuss the project or process.*

ZOOM TIPS

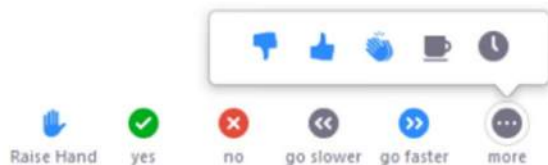
Here is how you can participate during the question and answer part of the presentation.

DURING THE PRESENTATION:



VIA WEB:

Turn video on / off.



To use these non-verbal options click on participants (bottom of screen); these options will pop up in side bar.

DURING THE Q&A:



JOINING VIA PHONE?

Use *9 to raise hand to ask for audio / video permission to ask questions or provide comments.



VIA WEB:

Chat to ask questions / comments or provide responses to poll questions



Raise hand to ask for audio / video permission to ask questions or provide comments.

AGENDA

1

PROJECT TEAM INTRODUCTION

2

WALL REPAIR UPDATE

3

PROJECT OVERVIEW

4

PRESENTATION

5

LISTENING & DISCUSSION

6

CLOSING REMARKS & NEXT STEPS

PROJECT TEAM

Kezia Ofiesh

PROJECT MANAGER, BRPD

kezia.ofiesh@boston.gov or 617-961-3059

Cathy Baker-Eclipse

DIRECTOR OF THE CAPITAL PLAN, BRPD

cathy.baker-eclipse@boston.gov

My'Kel McMillen

OUTREACH COORDINATOR, EXTERNAL AFFAIRS

corey.mcmillen@boston.gov or 617-201-1294

Anthony Nguyen

MID-DORCHESTER LIAISON, OFFICE OF NEIGHBORHOOD SERVICES

anthony.nguyen@boston.gov

Kaki Martin, Principal

Jennifer Ng, Senior Associate

Melita Schmeckpeper, Designer

Dora Mugerwa, Designer

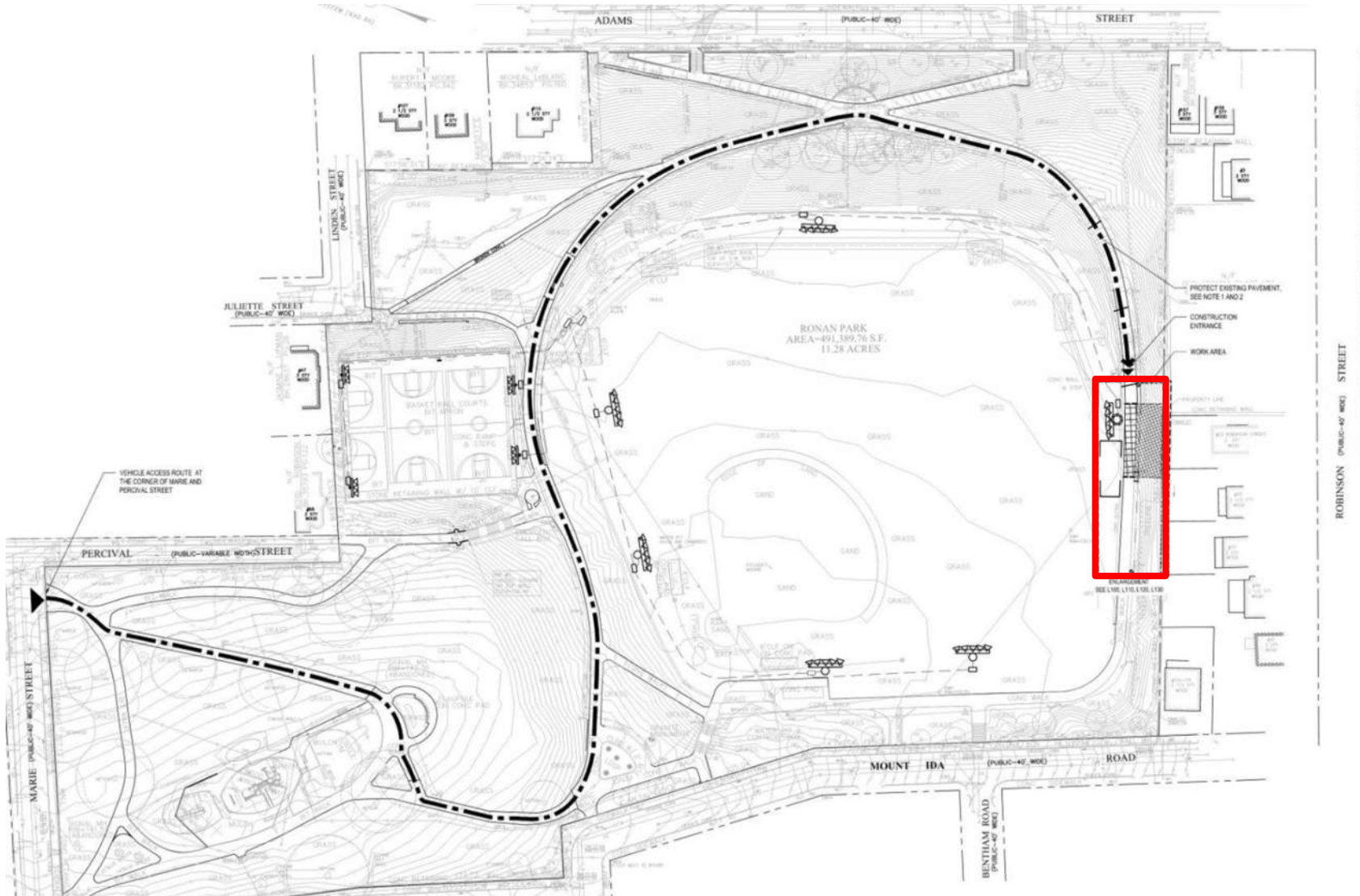
Klopfer Martin Design Group



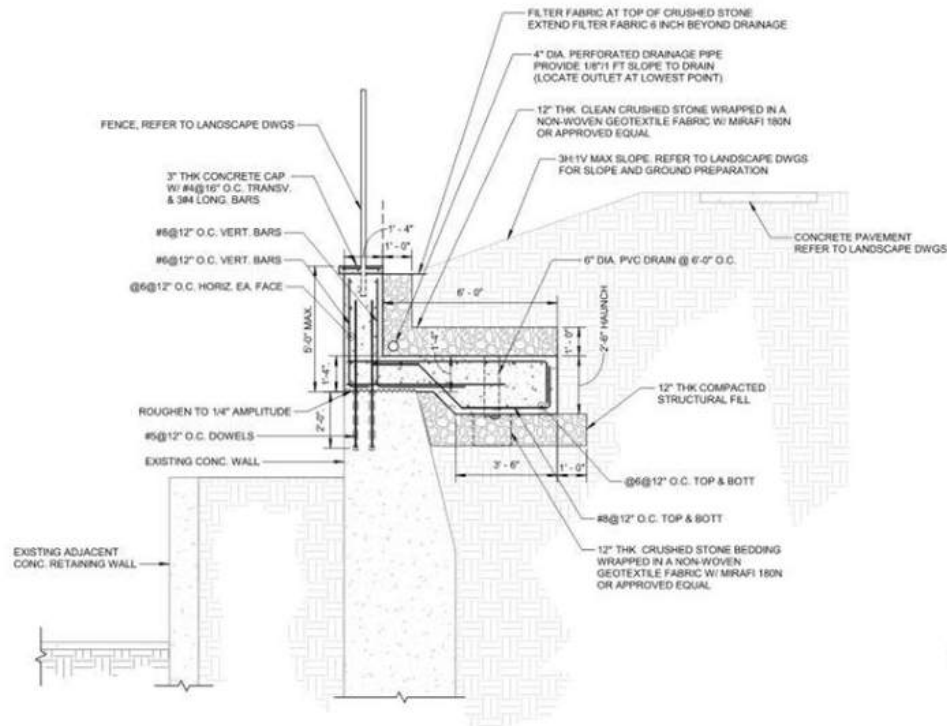
WALL REPAIR - CONDITIONS



WALL REPAIR - LOCATION & ACCESS



WALL REPAIR - DETAIL



- Remove upper portion of failing wall
- Install new concrete wall tied to existing wall
- Excavation for the new wall extension will require replacing a portion of the concrete walk and may require removal of existing 24" Oak.
- Previously removed invasive species to lighten the live load on the failing portion of the wall

2 SECTION AT NEW CONCRETE RETAINING WALL

N.T.S.

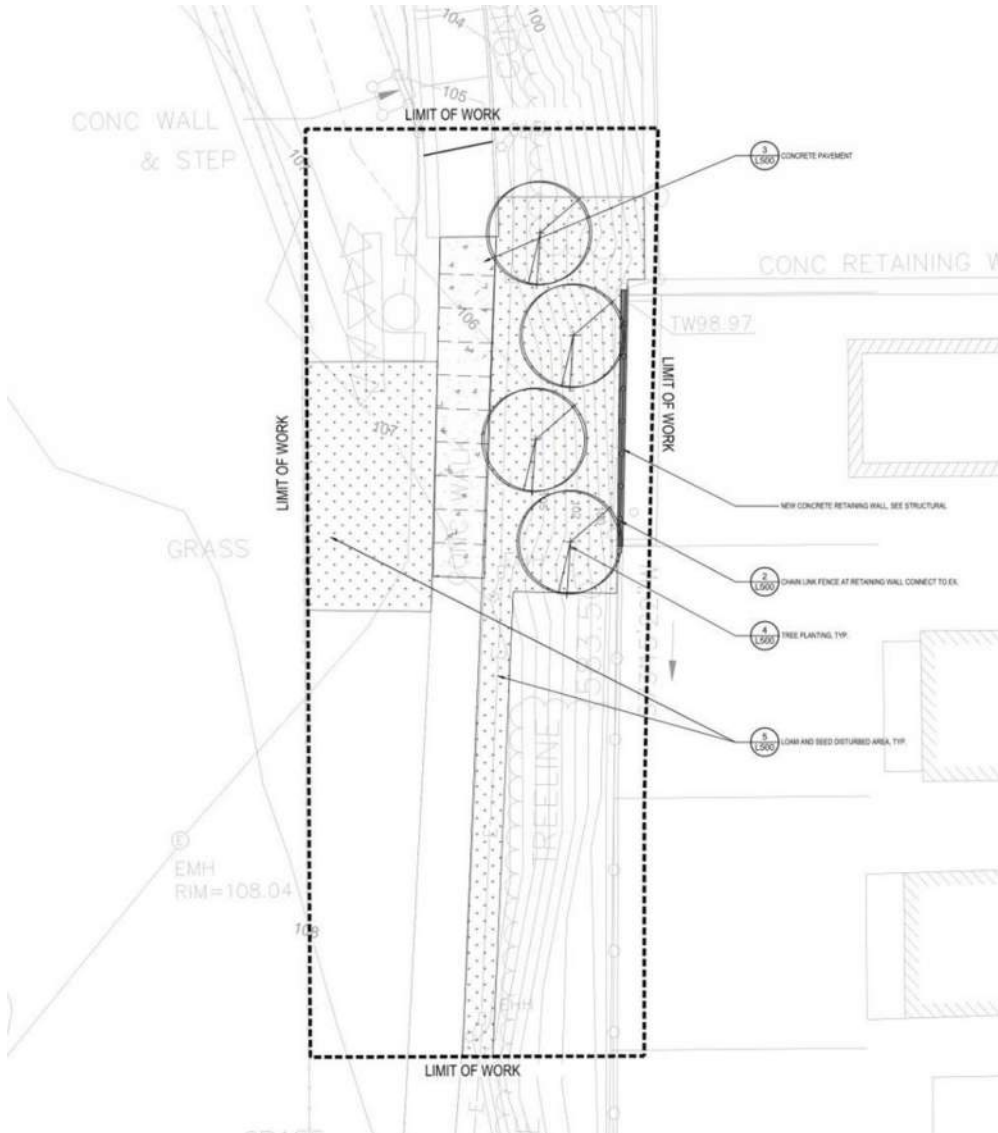
3

WALL REPAIR - TREE IMPACTS



- Existing 24" Oak at the edge of excavation area
- Roots may be undermined by required excavation
- Additional investigation of root system during construction will help determine whether this tree will need to be removed in order to perform the required wall repair

WALL REPAIR - SITE RESTORATION PLAN



- Restore concrete pathway
- Plant 4 Amelanchier on slope
- Loam and seed disturbed areas

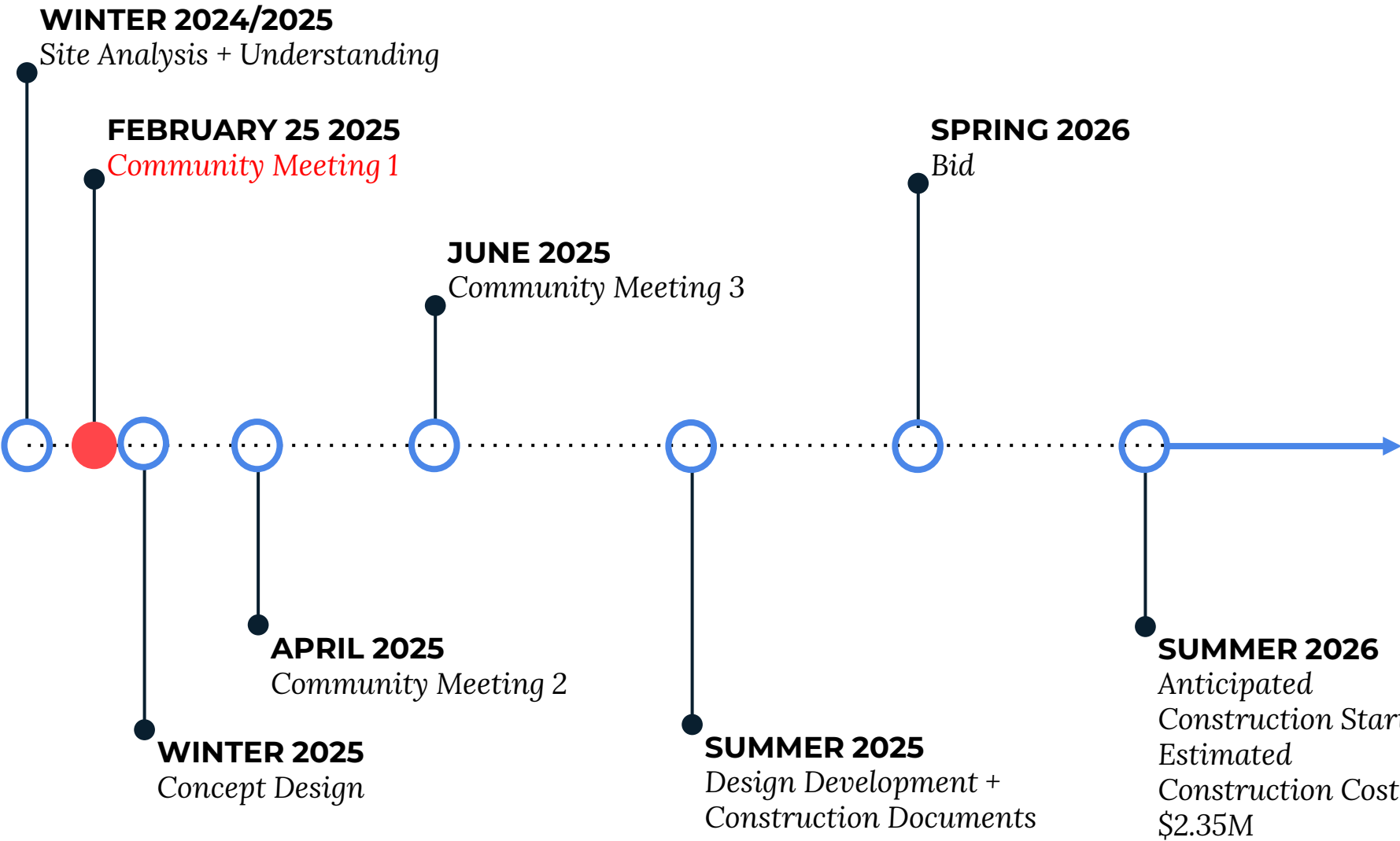
TIMELINE:

- Bid March/April
- Mobilize May
- Construction period - 30-60 days
- Minimize impact to playing field by restricting construction zone

PROJECT OVERVIEW



PROJECT SCHEDULE & FUNDING





CITY OF BOSTON PRIORITIES

A city that is:

- **Delivering Exceptional Constituent Services**
- **Green and Growing**
- **Family Friendly**
- **Closing the Racial Wealth Gap**
- **Healthy and Safe**



PARK & RECREATION GOALS

- Accessible and available to all
- Diverse, balanced, and efficient mix of uses
- Meaningful and inclusive community engagement
- Adaptive and resilient landscapes
- Promote connections



RONAN PARK COMMUNITY



A COMMUNITY THAT PLAYS



A COMMUNITY THAT GATHERS

MAYOR MICHELLE WU'S

MOVIE NIGHTS



FEATURING

Disney

WISH



TUESDAY, AUGUST 27
Movie starts at dusk
RONAN PLAYGROUND
92 Mt. Ida Rd, Dorchester

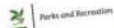
FREE POPCORN WHILE SUPPLIES LAST

For more info: (617) 635-4505, boston.gov/ParkARTS, or follow us [Facebook](#) [Twitter](#) [Instagram](#) @bostonparksdept

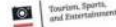
TITLE SPONSOR

ADDITIONAL SUPPORT BY

CITY of BOSTON



BANK OF AMERICA



SEPTEMBER YOGA SERIES

Ronan Park COMMUNITY YOGA CLASSES

Classes are free and open to everyone. The series will take place on Wednesdays in September in front of the flagpole.

9/4, 9/11, 9/18, 9/25
6-7pm



A COMMUNITY THAT ENGAGES



RONAN PARK
Community
Daffodil Planting
& Clean-Up

SATURDAY,
NOVEMBER 9th
2-3pm

Join neighbors and
friends in a fall
planting and
clean-up of beautiful
Ronan Park!



Teen Urban Tree
Corps

Growing trees and leaders for Boston's future



AUGUST COMMUNITY
GATHERING

Join us for pizza and to discuss fall
events and brainstorm new ideas to
activate the park!

A COMMUNITY THAT COLLABORATES



**THE HOOP
COLLABORATIVE**
YOUTH DEVELOPMENT PROGRAM

**Cape Verdean
Association of Boston**



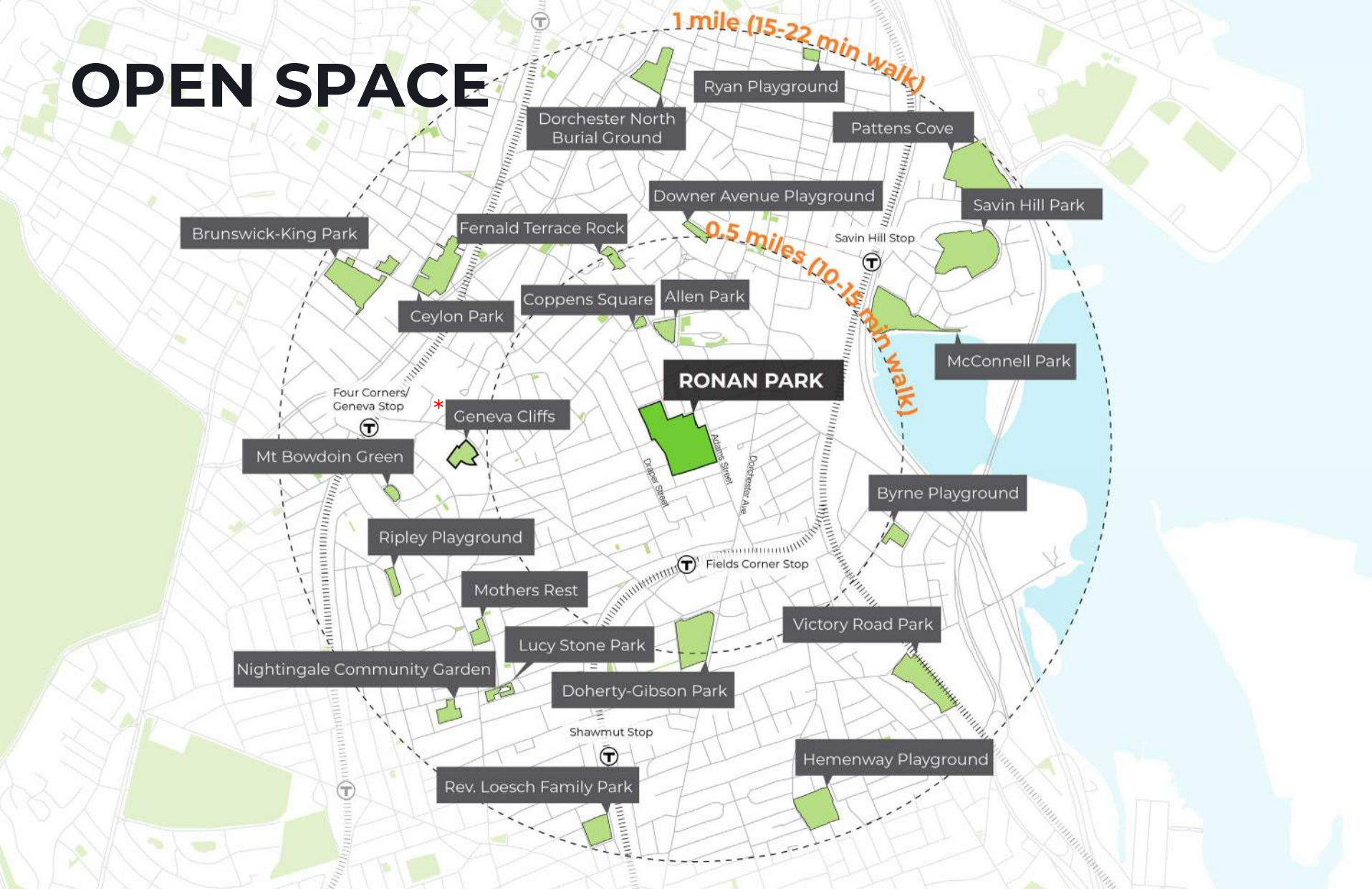
**AFTER DARK PROGRAMS
AT RONAN PARK**



NEIGHBORHOOD CONTEXT



OPEN SPACE



LEGEND



Open Space (*Geneva Cliffs is also undergoing improvements)

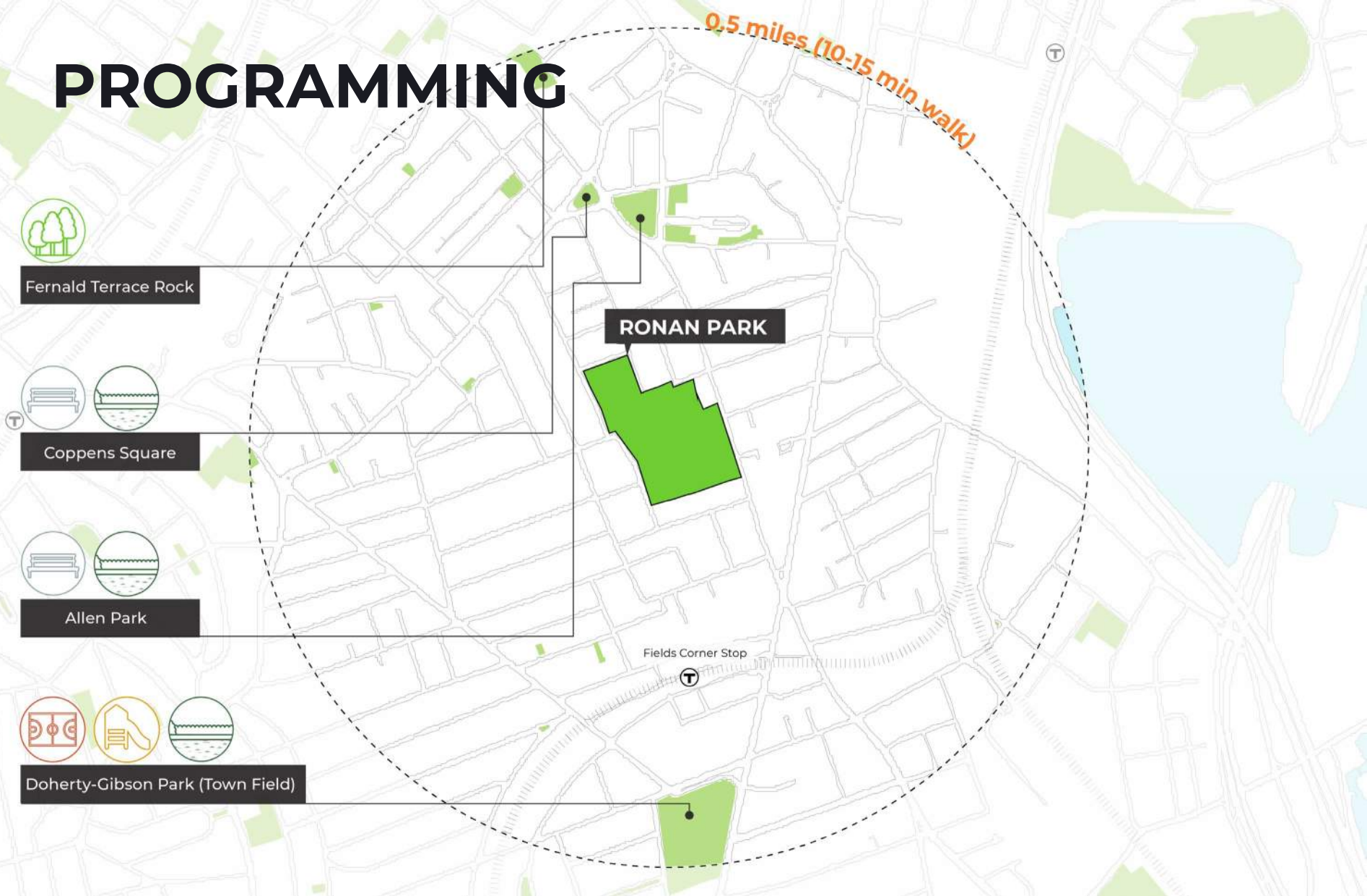


Walking Distance Radius

NORTH



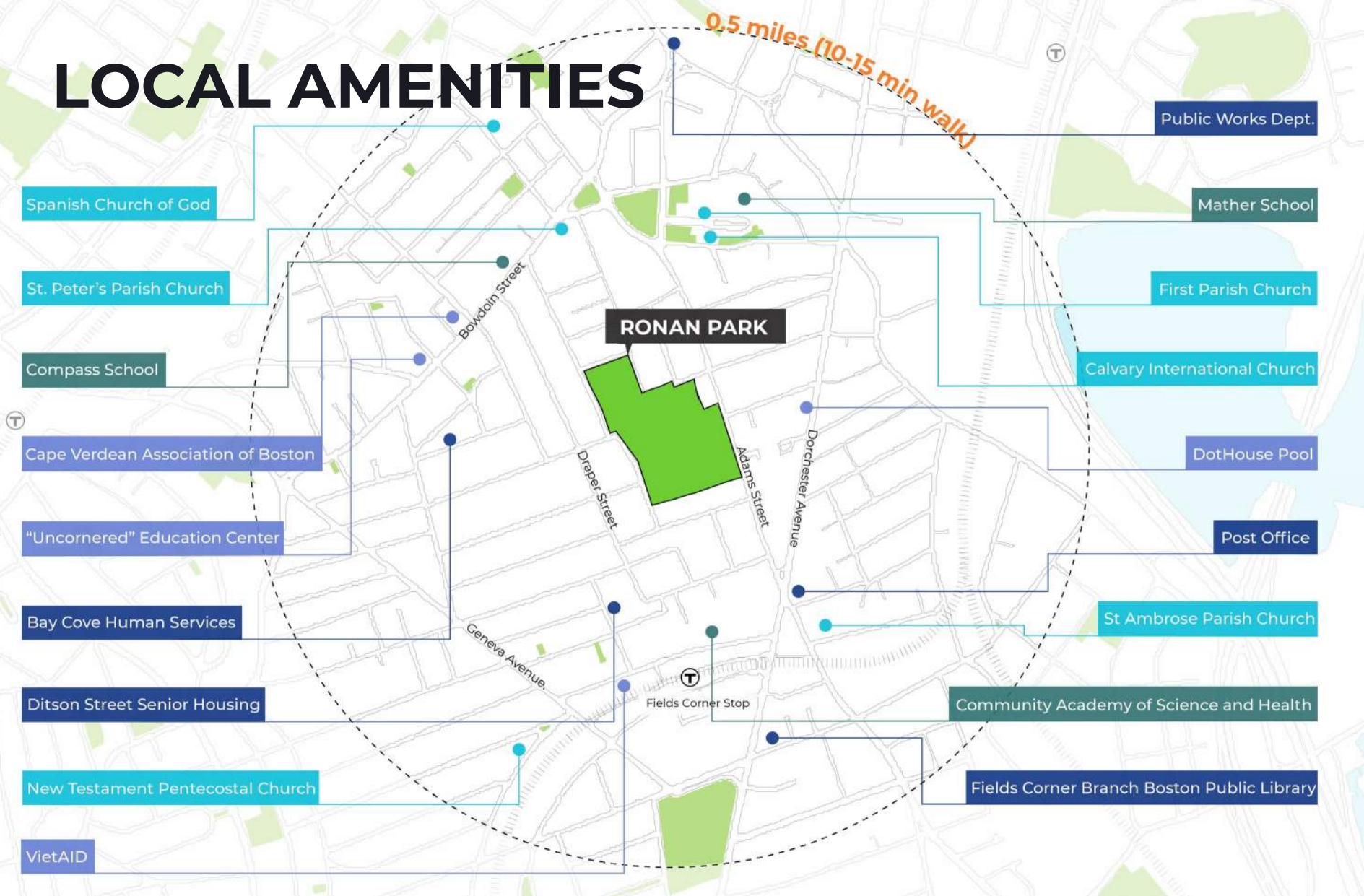
PROGRAMMING



LEGEND



LOCAL AMENITIES



LEGEND



Open Space



Walking Distance



Churches



Schools



Non Profits



Governmental Services

NORTH



RONAN PARK SITE ANALYSIS



AN ABBREVIATED DESIGN HISTORY

1913 – Initial Ronan Park Design

1918 – Path updates

1972 – Playground added

1990 – Basketball courts added

2006-Present – Playground changed

- Water play feature added
- Dog park added at Linden Street Corner
- Field renovations
- Lighting added to Basketball courts

PROJECT EXTENT



LEGEND



Extent of Ronan Park Project

Park Entrances



OBSERVATIONS



OBSERVATIONS

Swings are exposed to the sun, without shade

Mature trees provide shade for the playground

The basketball court has cracks on surfaces and backboards



OBSERVATIONS



OBSERVATIONS

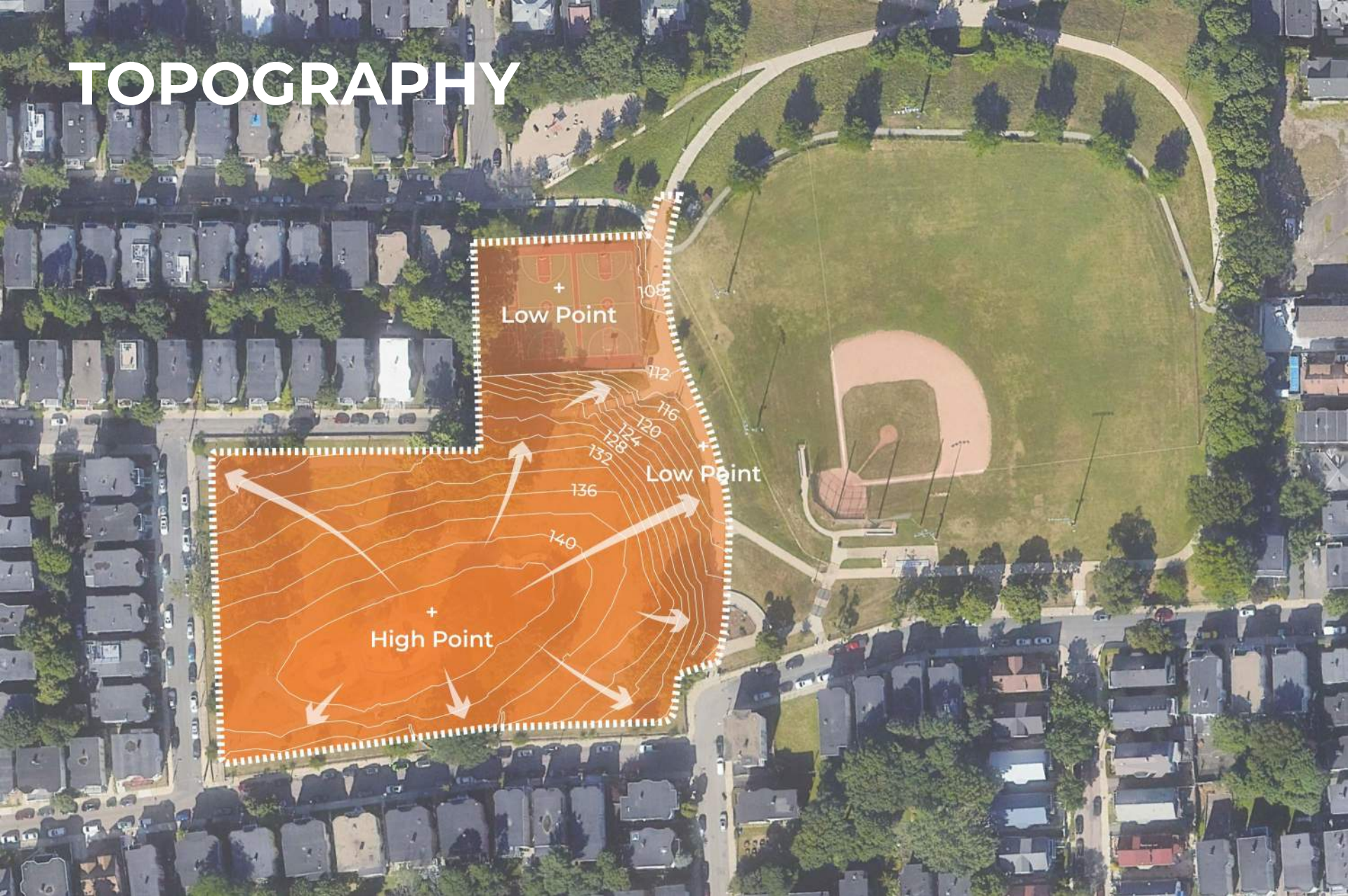
The views are amazing and a popular attraction

Paths provide a unique walking experience across the park

Benches and the hill provide varied seating experiences in the park



TOPOGRAPHY

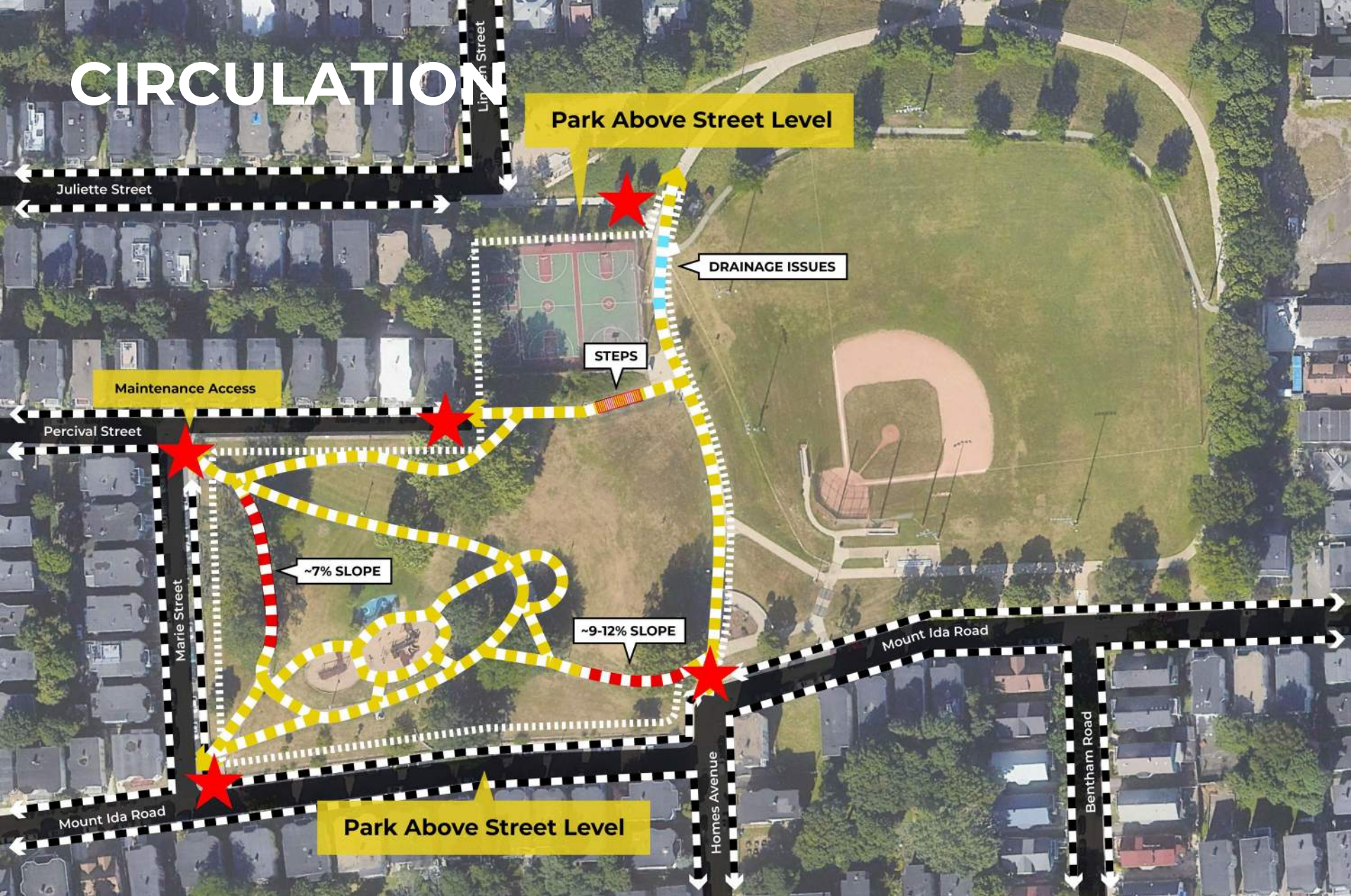


LEGEND

-  2 Foot Elevation Changes
-  Stormwater Flow



CIRCULATION



LEGEND

— Ronan Park Path

— Sidewalk

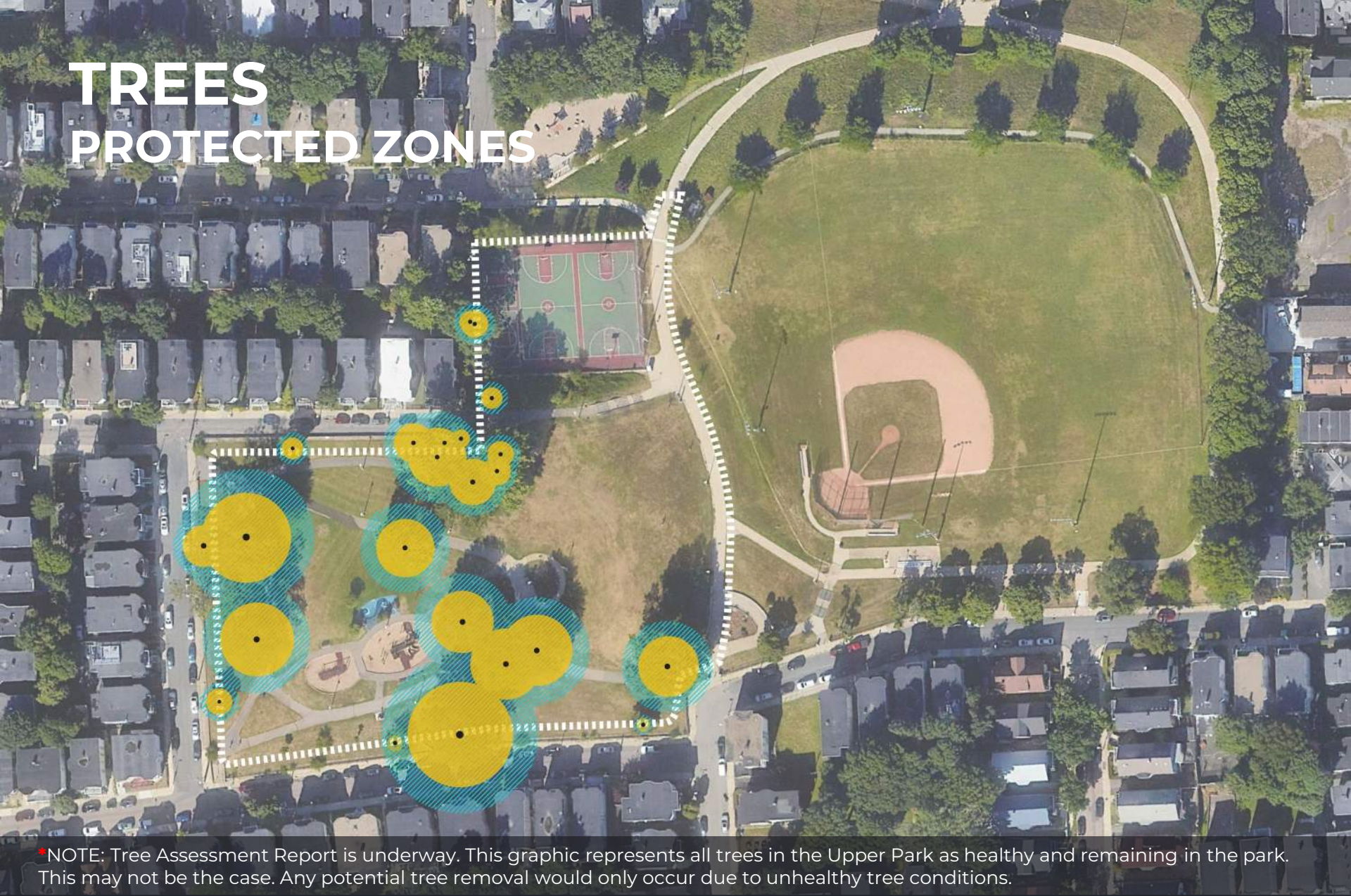
— Steep Paths

— Path with Drainage Issues

★ Park Entrances



TREES PROTECTED ZONES



LEGEND



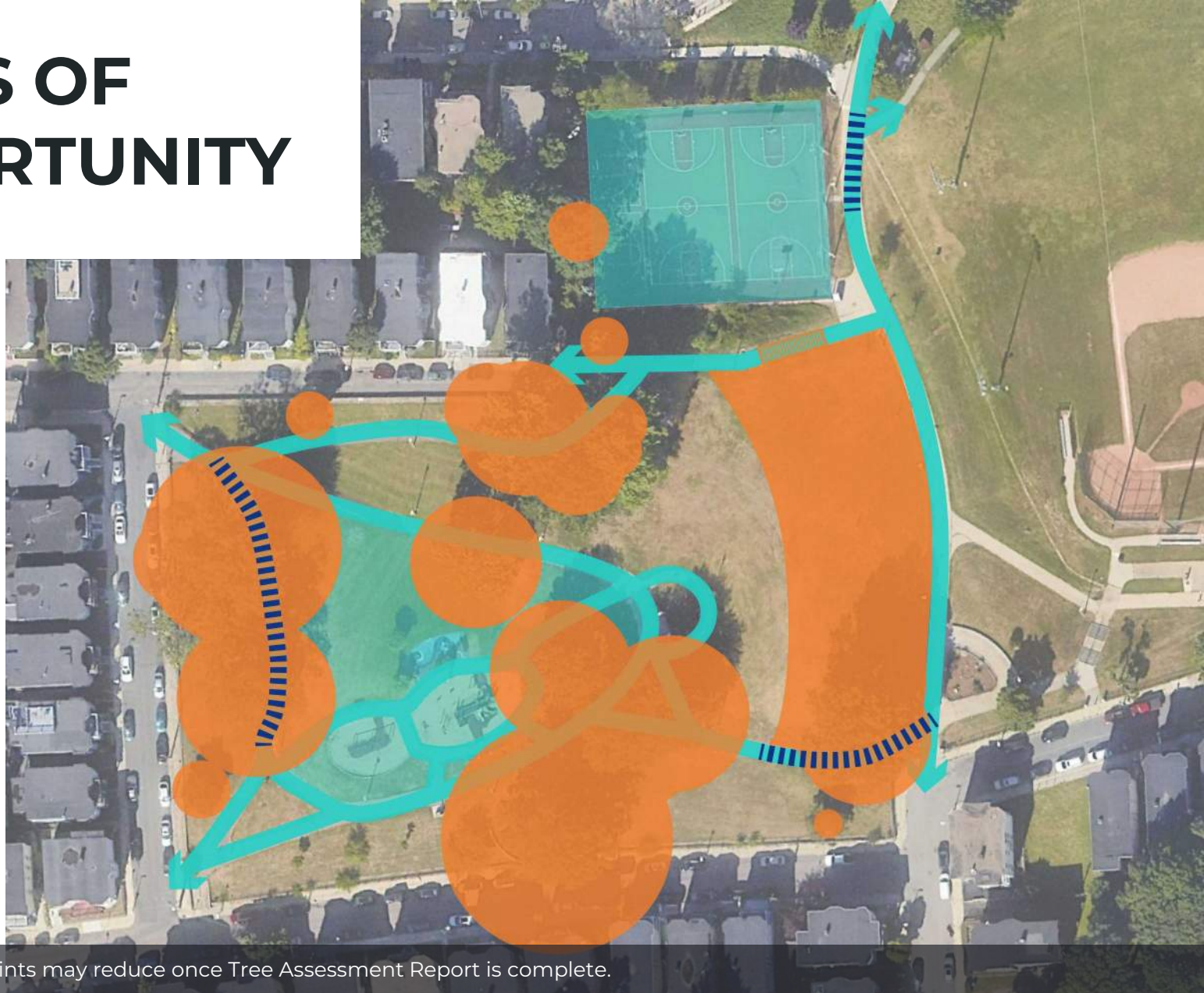
Critical Root Zone: Area Immediately Surrounding the Tree Trunk



Tree Protection Zone: Area to be Protected During Construction



AREAS OF OPPORTUNITY



•NOTE: Areas of Constraints may reduce once Tree Assessment Report is complete.

LEGEND



Areas of Opportunities



Areas of Constraints



Paths that need improvements



LISTENING & DISCUSSION

Let us know what matters to you!



PULSE CHECK SURVEY

WHAT'S YOUR FAVORITE MEMORY?

WHAT'S YOUR WISH?

Play Area + Splash Pad

Trees + Views

Basketball Courts

Paths + Entrances

Gathering + Open Space

Park Essentials

PULSE CHECK SURVEY

WHAT'S YOUR FAVORITE MEMORY?

WHAT'S YOUR WISH?

Play Area + Splash Pad

Trees + Views

Basketball Courts

Paths + Entrances

Gathering + Open Space

Park Essentials



PULSE CHECK SURVEY

WHAT'S YOUR FAVORITE MEMORY?

WHAT'S YOUR WISH?

Play Area + Splash Pad

Trees + Views

Basketball Courts

Paths + Entrances

Gathering + Open Space

Park Essentials



PULSE CHECK SURVEY

WHAT'S YOUR FAVORITE MEMORY?

WHAT'S YOUR WISH?

Play Area + Splash Pad

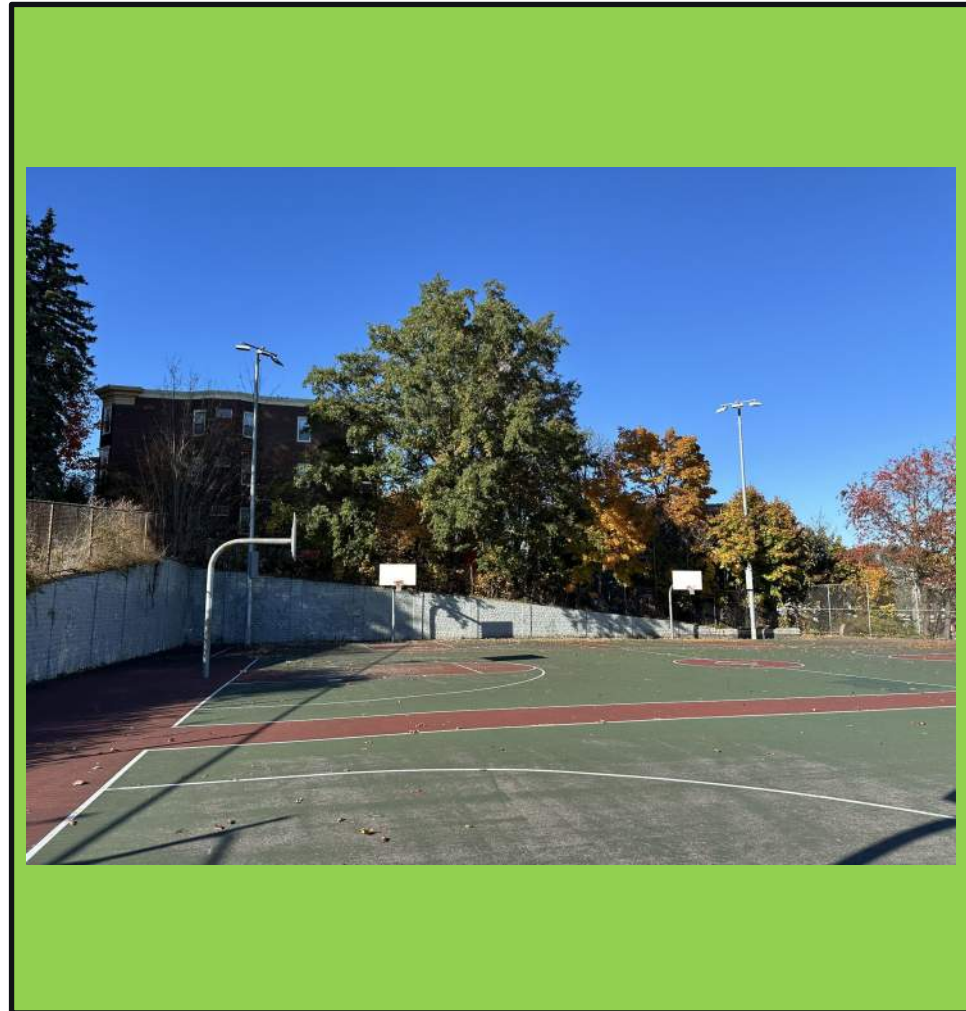
Trees + Views

Basketball Courts

Paths + Entrances

Gathering + Open Space

Park Essentials



PULSE CHECK SURVEY

WHAT'S YOUR FAVORITE MEMORY?

WHAT'S YOUR WISH?

Play Area + Splash Pad

Trees + Views

Basketball Courts

Paths + Entrances

Gathering + Open Space

Park Essentials



PULSE CHECK SURVEY

WHAT'S YOUR FAVORITE MEMORY?

WHAT'S YOUR WISH?

Play Area + Splash Pad

Trees + Views

Basketball Courts

Paths + Entrances

Gathering + Open Space

Park Essentials



PULSE CHECK SURVEY

WHAT'S YOUR FAVORITE MEMORY?

WHAT'S YOUR WISH?

Play Area + Splash Pad

Trees + Views

Basketball Courts

Paths + Entrances

Gathering + Open Space

Park Essentials



COMMUNITY SURVEY

WE LOOK FORWARD TO HEARING FROM YOU!

COMMUNITY SURVEY

<https://bit.ly/RonanSurvey1>





THANK YOU!

Next Meeting - APRIL 2025

For questions, maintenance requests or concerns regarding any of our parks contact 311



To learn more, visit the project website:

www.boston.gov/ronan-park

For questions or comments about this project,
contact Kezia Ofiesh

kezia.ofiesh@boston.gov



February 25, 2025
Boston Parks and Recreation

