

DORCHESTER COMMUNITY CENTER

FLOOR PLANS

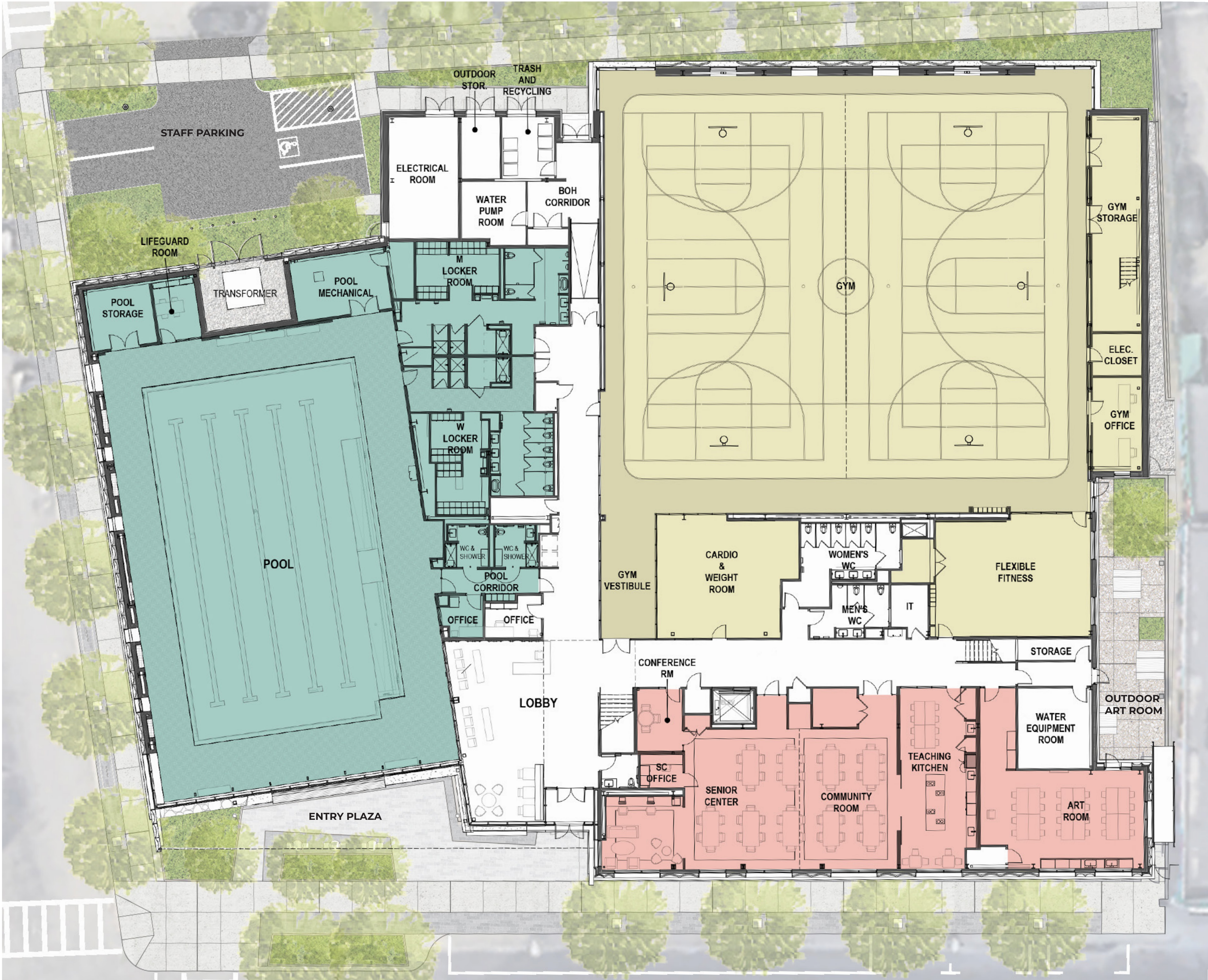
First Floor

Lobby

Pool & Locker Rooms

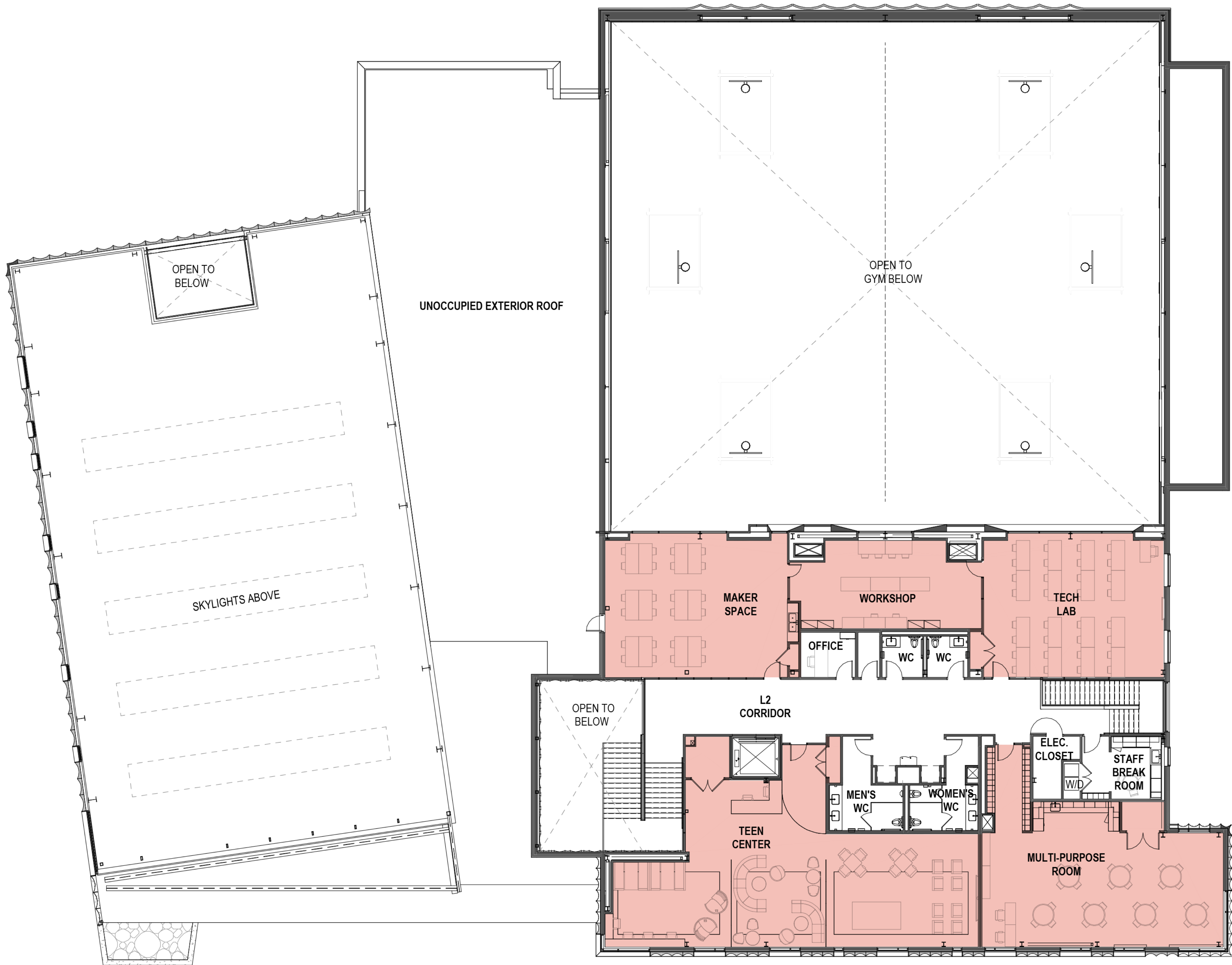
Gym
Cardio & Weight Room
Fitness Studio

Senior Center
Community Room
Conference Room
Teaching Kitchen
Art Room



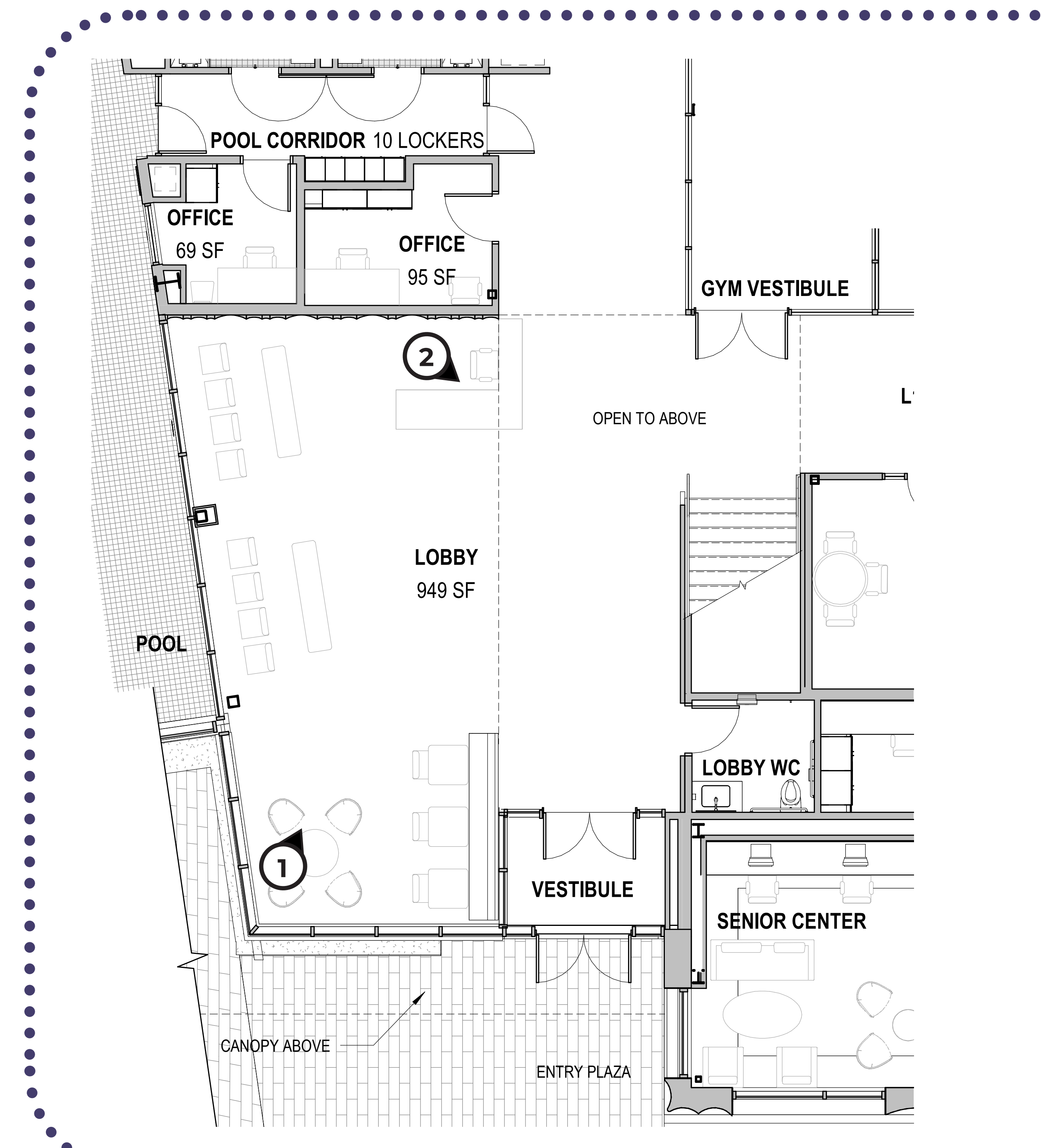
Second Floor

Teen Center
Multipurpose Classroom
Tech Lab
Makerspace
Workshop



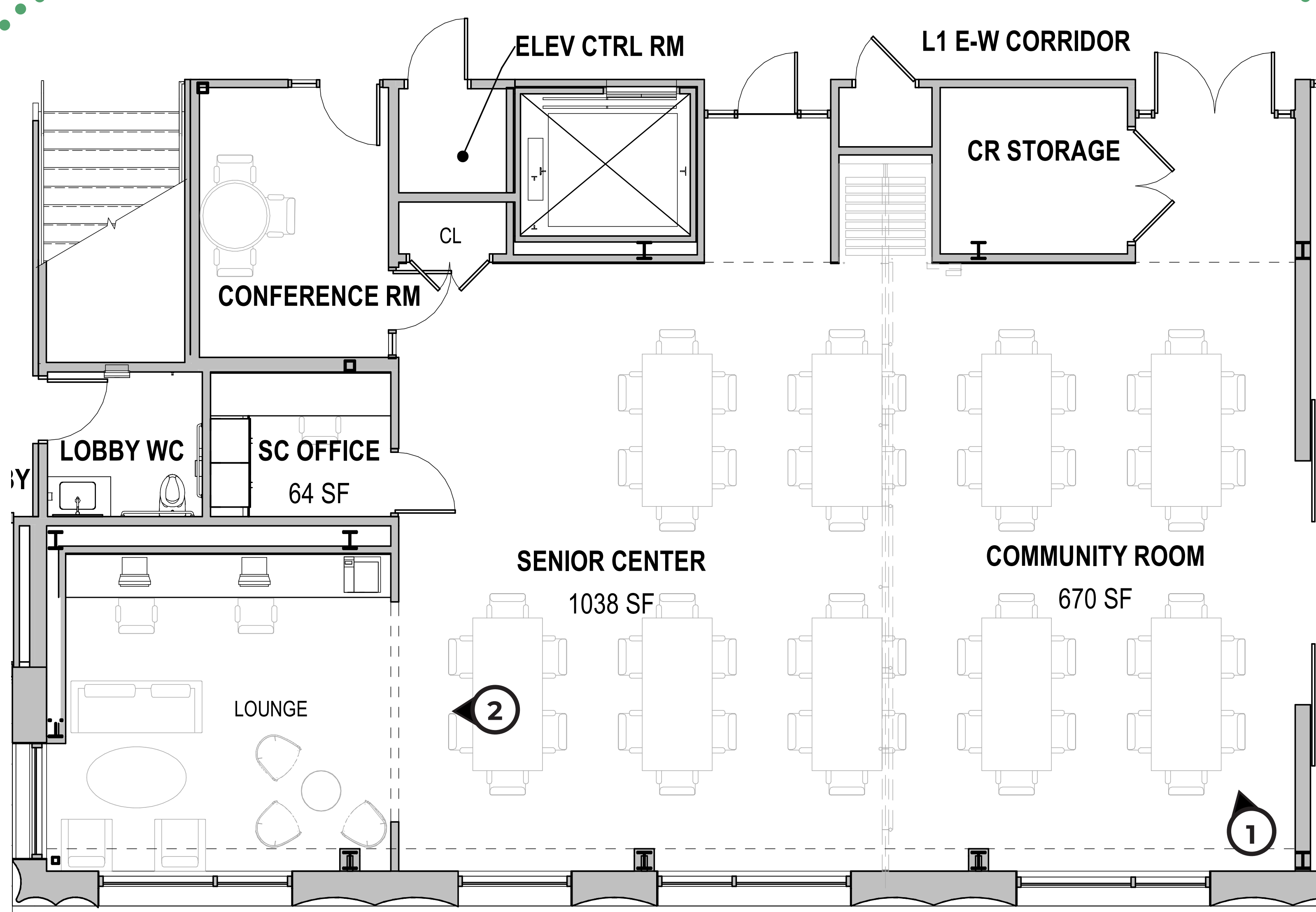
LOBBY

The lobby serves not only to invite users into the center, but as a central point from which the various programs branch. Upon entering, users are immediately met with visual connection to the pool, gym, and the hall and stair of the enrichment wing. This serves to highlight the wide variety of programs the center has to offer, and allows guests to quickly and easily get where they need to go.



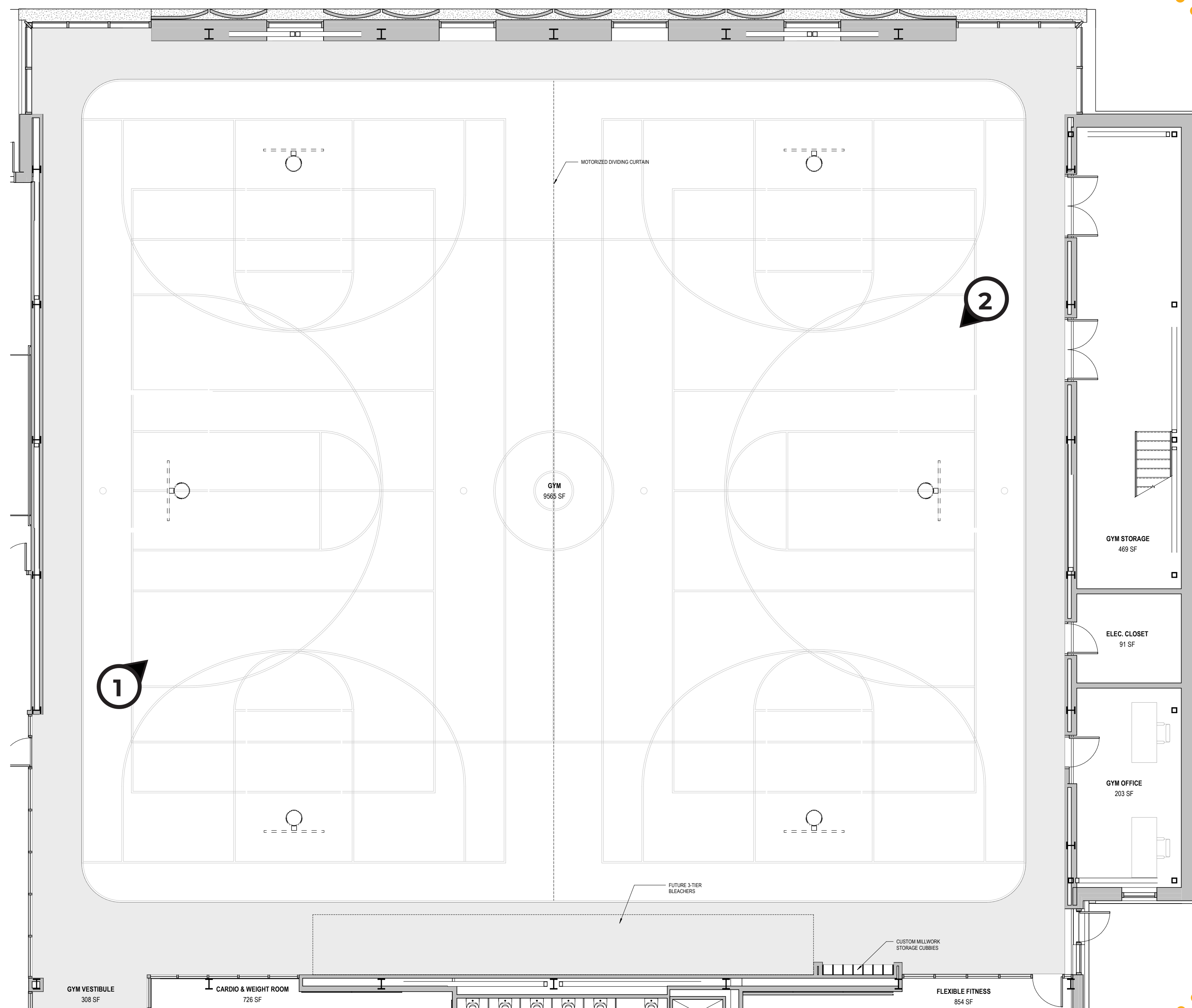
SENIOR CENTER

The senior center provides a flexible space for gathering and holding events that the senior community can call their own. The space is easily accessible from the lobby, and is comprised of a large room that can be partitioned to hold multiple simultaneous events, as well as a lounge for relaxing and a conference room for smaller meetings. Large sliding doors also maintain connection with the adjacent teaching kitchen.



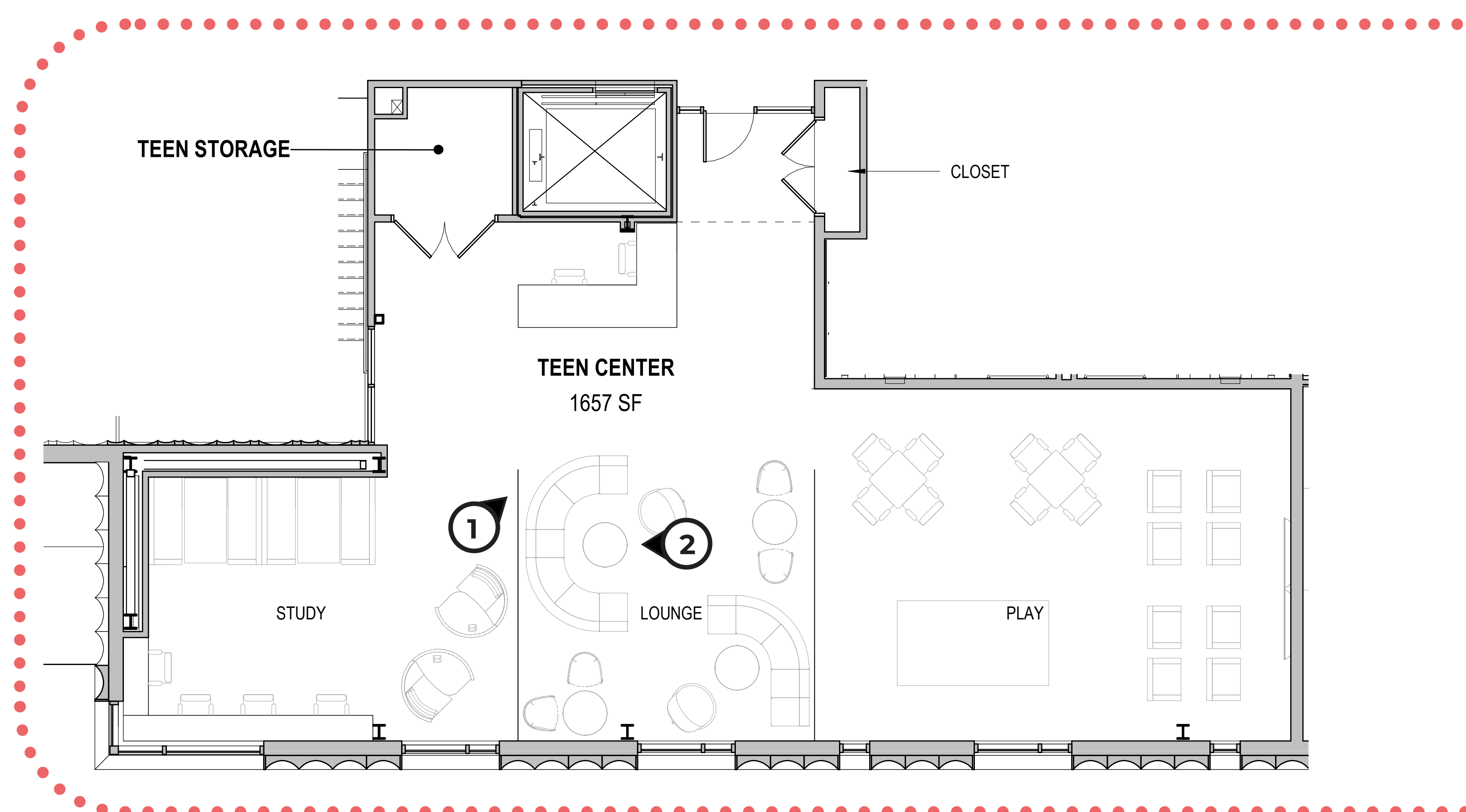
GYMNASIUM

The gym houses courts and equipment for a variety of activities, including three basketball courts, three volleyball courts, adaptive sports equipment, and bleachers for viewing. The playing courts are surrounded by a walking track, providing space for exercise to users of all ages. The gym has visual connections to the adjacent cardio / weight room and fitness studio, as well as the tech lab, makerspace, and workshop above.



TEEN CENTER

The teen center provides a space that teenagers can call their own. It is comprised of three main zones, a study area, a lounge, and a game area. The study area has booths for group study, and work stations and pods for solo study. The lounge area is made up of sofas, tables, and chairs for flexible socializing. The game area holds a ping pong / pool table, and screens and chairs for gaming.



POOL

The center features a natatorium with a five lane pool, plus a zero-barrier entry ramp, allowing anyone to enjoy the space with ease. The pool features diving blocks and viewing areas for competitive simming, as well as generous shallow-end steps for staging swim lessons. The pool is accessible through the locker rooms, and an additional corridor that features gender neutral shower / changing rooms, and lockers for storage.

The center also features a wide variety of environmental features highlighted below, such as: all electric systems, PV-ready roof, waste heat recycling, stormwater infiltration system, and use of native plantings and trees for shade.

HEALTHY INTERIORS

Low- or no-VOC emitting materials used throughout

Enhanced indoor air quality strategies include MERV 13 filtration and CO2 monitoring

BUILDING ENVELOPE

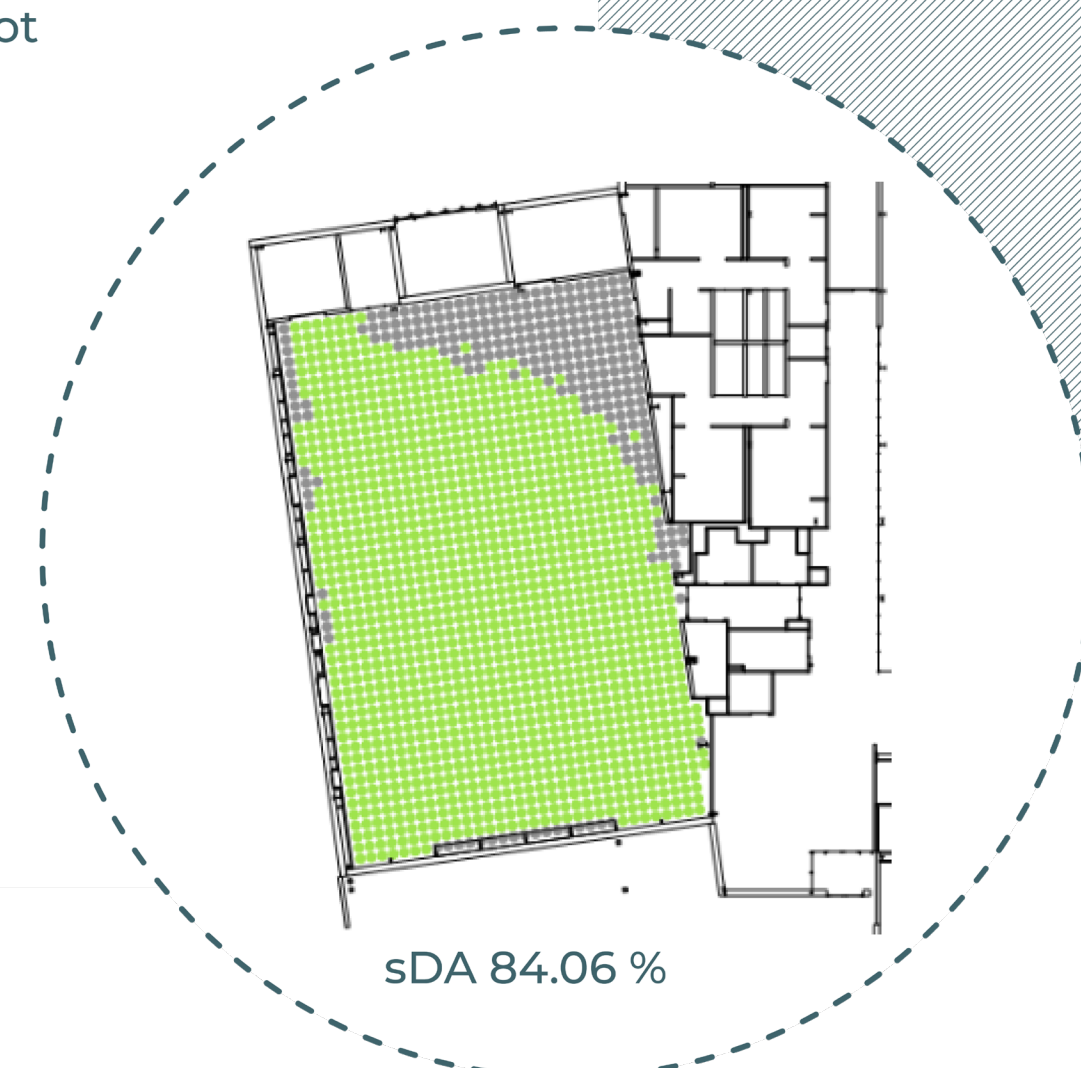
Triple glazing at natatorium minimizes heat loss and condensation risk

Roof monitors and celerestories bring in diffuse light for quality daylight and visual comfort

Continuous exterior insulation reduces heating loads

Minimized thermal bridging mitigates condensation risk

Stormwater infiltration system located beneath staff parking lot



DECARBONIZED BUILDING SYSTEMS

Roof areas optimized for on site solar PV

Pool dehumidification system utilizes waste heat from cooling operation to provide reheat energy

All electric systems provide efficient heating and cooling

summer sun 6/21 noon

winter sun 12/21 noon

Electric vehicle charging stations located at staff parking lot

Building to operate as cooling center during extreme heat events

Canopy provides shading for outdoor seating space and entry plaza

Native plantings conserve water and provide a natural habitat

Street trees provide shade, reducing heat at the sidewalk

RESILIENCE



GENEVA AVE



The public plaza at the Geneva Ave entrance to the center features benches and cafe tables for sitting and relaxing, as well as open space for gathering or performing. Part of the space is covered by a large canopy, creating shade and shelter and allowing the plaza to be used in a variety of weather conditions. The plaza is complemented by native plantings and trees, further providing shade among other environmental benefits.



NORMANDY / OLDFIELDS

While the main face of the building is along Geneva Ave, the building also relates to its neighbors on Normandy St and Oldfields Rd. To accomplish this, the brick and metal panel facade changes in scale to respond to its surroundings, with undulating scallops that grow and shrink as one moves around the building. This also provides the proper amount of light and privacy for different programs. The facade is also complimented by upgraded sidewalks and new street trees.

