

# BERDO Webinar: Renewable Energy

*April 2, 2024*



# City of Boston staff



**Hannah  
Payne**

---

*Director of  
Carbon Neutrality*



**Aidan  
Callan**

---

*BERDO Program  
Manager*



**Dr. Claudia  
Diezmartinez**

---

*Policy and  
Equity Advisor*

# Agenda

*Today's webinar*



- BERDO overview
- Renewable energy basics
- Using renewable energy for BERDO compliance
  - *Reporting requirements*
  - *Q&A time for each renewable energy option*
- Resources and reminders

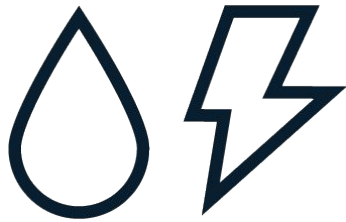


The background of the slide is a dark blue aerial view of a city grid, rendered in white line art. The lines represent building footprints, streets, and parks, creating a complex geometric pattern. A semi-transparent dark blue horizontal band runs across the middle of the image, serving as a backdrop for the title text.

# BERDO Overview



# What is Required from Building Owners?



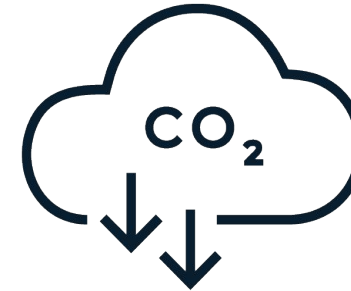
## ANNUAL REPORTING

*Report total energy and water use from the previous calendar year*



## THIRD-PARTY VERIFICATION

*Third-party verify data for the first year of reporting and every "verification year" thereafter*

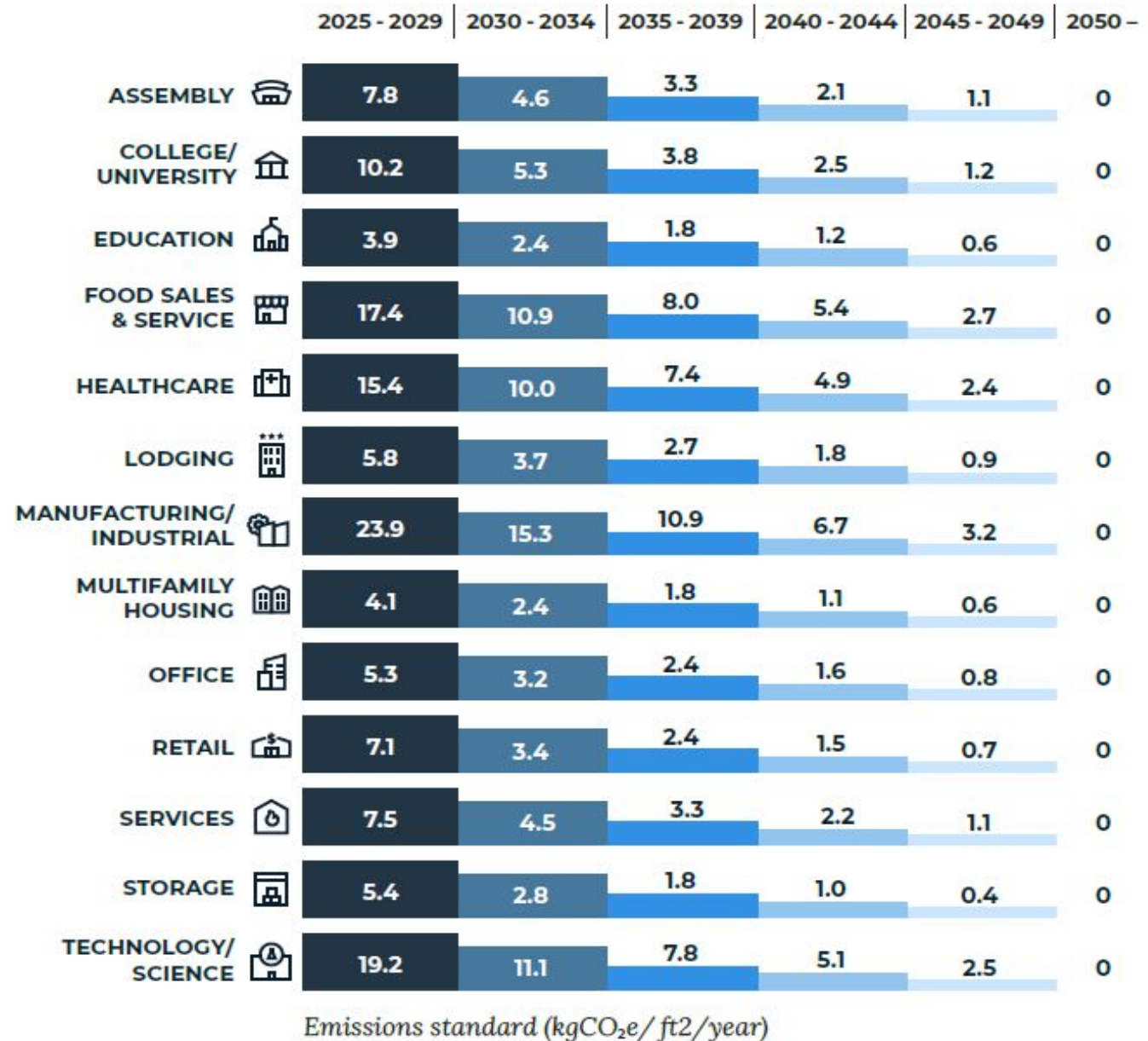


## EMISSIONS REDUCTIONS

*Reduce annual emissions to stay under applicable emissions standard (emissions limit)*

# Emissions Standards

Also known as emissions limits, refer to the regulated amount of climate polluting greenhouse gases BERDO building are allowed to release into the atmosphere.



# When are Buildings Subject to Emissions Standards?

## RESIDENTIAL

## NON-RESIDENTIAL

35+ units

**Starting emissions  
compliance in 2025**



35,000 ft<sup>2</sup> +

**Starting emissions  
compliance in 2025**



15 - 34 units

**Starting emissions  
compliance in 2030**



20,000 - 34,999 ft<sup>2</sup>

**Starting emissions  
compliance in 2030**



*\*Buildings have been annually reporting energy use since 2022.*



# It's 2025, What Now?

## 2025 EMISSIONS COMPLIANCE STATUS IS DETERMINED IN 2026\*

- You'll report your 2025 (Jan - Dec) energy usage **by May 15, 2026**

### JANUARY - DECEMBER 2025

- This is the time to assess your options, [check your emissions projections](#)
- Take steps towards reducing building emissions and plan for compliance

### FEBRUARY - MAY 2026

- Request and Report your building's 2025 energy and water data
- Purchase eligible renewable energy or make Alternative Compliance Payments if you are above your emissions limit

*\*For residential buildings with 35+ units and non-residential buildings that are 35,000+ Sq Ft.*



# How Can Building Owners Comply?



## REDUCE EMISSIONS THROUGH BUILDING EFFICIENCY AND ELECTRIFICATION

Implement **building retrofits or improvements**. Examples include upgrading to high efficiency electric appliances and lighting, upgrading systems for heating, cooling, water heating, and cooking, improving insulation, tightening window seals, etc.



## ACCESS RENEWABLE ENERGY

Use on-site or off-site **local renewable generation** or buy **renewable energy from the market**



## INVEST IN THE COMMUNITY THROUGH ALTERNATIVE COMPLIANCE PAYMENTS

Make Alternative Compliance Payments (ACPs). ACPs are collected to mitigate emissions and fund the **Equitable Emissions Investment Fund** to support building decarbonization projects that prioritize benefits to Environmental Justice communities in Boston.

The background of the slide is a dark blue aerial view of a city, rendered in white line art. The map shows a dense urban layout with numerous rectangular blocks of varying sizes, streets, and some circular features like parks or roundabouts. The perspective is from a high angle, looking down on the city.

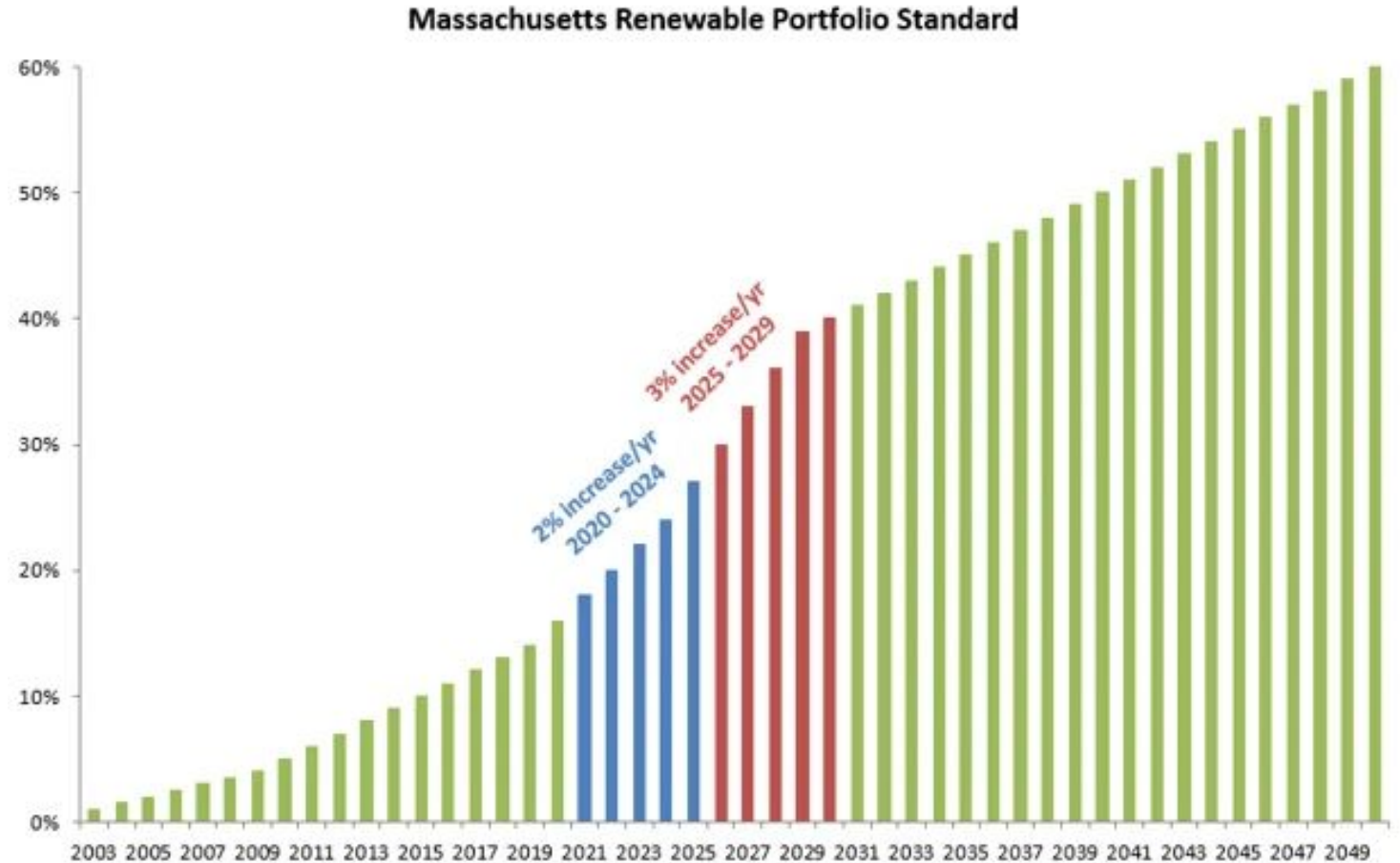
# Renewable Energy Basics

# How renewable energy is applied in BERDO

- Eligible non-emitting renewable energy can be used to reduce or mitigate emissions produced by **ELECTRICITY** use only.
- In most cases, using eligible renewable energy is demonstrated through the “retirement” of **Renewable Energy Certificates (RECs)**.
  - A REC is *proof that 1 MWh of electricity was made from a renewable energy source.*
  - When a REC is “retired” by a party, said party is claiming that they use that MWh of renewable energy and the REC is taken out of the market.
- All electricity use in BERDO is already credited with a percentage of renewable energy from the **MA Renewable Portfolio Standard (RPS)**.

# All buildings in Boston are already getting some renewable energy

- Massachusetts annually increases the amount of renewable energy we get in our state through the [Renewable Energy Portfolio Standard](#) (RPS).
- The RPS requires retail electricity suppliers to obtain a minimum percentage of their electricity from qualifying renewable energy facilities.
- Suppliers meet their annual RPS obligations by acquiring and “retiring” **MA Class I Renewable Energy Certificates (RECs)**.



Source: Green Energy Consumers Alliance



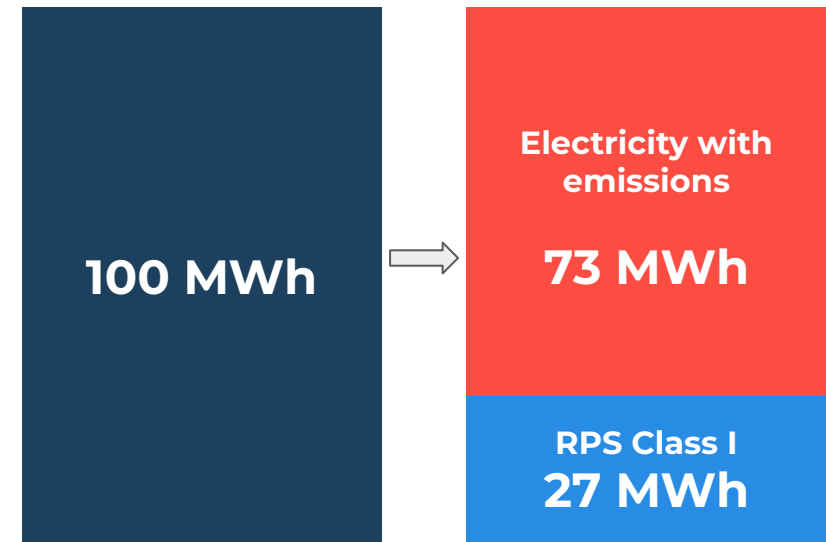
# BERDO gives credit for the RPS to all building owners

Any amount of electricity you consume from the ISO New England grid that is matched by the [Massachusetts RPS Class I annual minimum requirement](#) is considered to have zero emissions under BERDO.

$$\text{Grid Electricity Emissions} = \text{Electricity Use} \times (100\% - \text{RPS Class I}) \times \text{Grid Emissions Factor}$$

For example, if you consume 100 MWh of grid electricity in 2025, only 73 MWh will have a grid emissions factor applied to them:

$$\begin{aligned} &100 \text{ MWh} \times (100\% - 27\%) \times \text{Grid Emissions Factor} \\ &= 73 \text{ MWh} \times \text{Grid Emissions Factor} \end{aligned}$$





# BERDO has projected emissions factors to support planning, and a calculated annual emissions factor every year

**Projected emissions factors help you understand your future emissions levels and plan for compliance efforts**

**Annual emissions factors make annual emissions calculations more accurate and reflective of our grid**

To provide additional certainty to building owners, if the calculated annual grid emissions factor is higher than the projected grid emissions factor, then the projected grid emissions factor shall be used for calculating compliance.

*You can see the projected and calculated grid emissions factors in the [BERDO Emissions Factors List](#)*



# Using Renewable Energy for BERDO Compliance

# How can building owners use renewable energy to comply with BERDO?

Building owners can mitigate their building's electricity emissions\* with non-emitting renewable energy by:

- 1 **Enrolling into Boston Community Choice Electricity (BCCE) and choosing the “Standard” or “Green 100” Plan**
- 2 **Buying and retiring MA Class I RECs**  
*(unbundled or bundled as part of a PPA inside ISO New England)*
- 3 **Entering a PPA outside ISO New England**
- 4 **Using local renewable energy generation (solar arrangements)**

\* Renewable energy may not be used to mitigate emissions from fossil fuel use.



# 1 Enrolling into BCCE and choosing the “Standard” or “Green 100” plans



- [BCCE](#) is Boston’s municipal aggregation program.
- BCCE offers two electricity products that **exceed the Massachusetts RPS Class I requirements**, enabling owners to reduce their emissions from electricity compared to the Eversource Basic Service.
- BERDO buildings that show BCCE Green 100 enrollment for a full calendar year for all electric accounts, would be considered to have **zero emissions** from their electricity usage.
- The BERDO Team will verify your building’s BCCE enrollment and credit the additional renewable energy you get through BCCE to your building’s emissions calculations.

This example shows how electricity emissions change across the different BCCE plans for a building that uses 100,000 kWh for the 2025 calendar year\*

PLAN	ELECTRICITY USAGE (kWh)	% RENEWABLE ENERGY	ELECTRICITY EMISSIONS UNDER BERDO (kgCO <sub>2</sub> e)
<b>BASIC</b> (Opt-down)	100,000	27%	18,177
<b>STANDARD</b> (Default)	100,000	42%	14,442
<b>GREEN 100</b> (Opt-up)	100,000	100%	0

\* Electricity Emissions were calculated using the methodology shown in the [BERDO Compliance Handbook](#), using the 2025 [projected grid emissions factor](#) of 0.249 kgCO<sub>2</sub>e/kWh and the [2025 Renewable Energy Portfolio Standard \(RPS\)](#) of 27%.

# Reporting BCCE Enrollment

1. **Energy Star Portfolio Manager** – No Reporting Required
2. **BERDO Reporting Form** – Optionally report the building's Eversource service address

*BERDO staff will run the building-by-building emissions calculations and incorporate BCCE enrollment data for you*

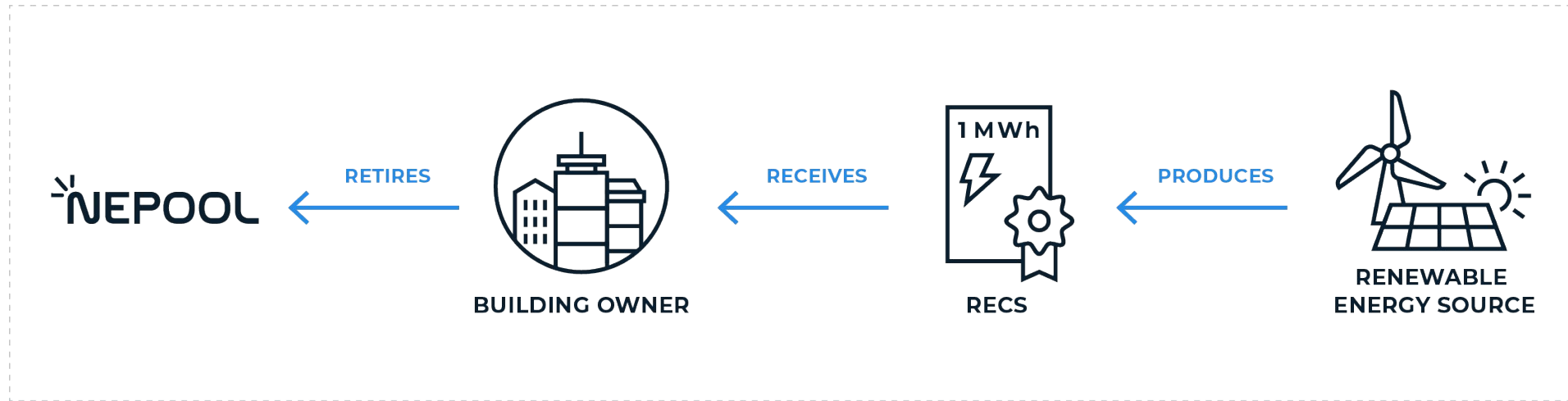
[Boston Community Choice Electricity](#)



# Questions?

2

## Buying and retiring MA Class I RECs (unbundled or bundled as part of PPA inside New England)



### Requirements for both unbundled and bundled MA Class I RECs:

- RECs must be generated **within the compliance year or within the 12 months prior**.
  - For example, to use a REC to comply in 2025, the REC must have been generated any time between Jan 2024 and Dec 2025.
- RECs must be retired within **6 months of the end of the compliance year**.
  - For example, to use a REC to comply in 2025, the REC must have been retired by June 30, 2026.

For detailed methodology on calculating emissions compliance with REC purchases, please refer to our [BERDO Compliance Guide](#)



# Reporting MA Class I RECs

1. **Energy Star Portfolio Manager** – No Reporting Required
2. **BERDO Reporting Form** – Answer required questions on “Renewable Energy” section of the BERDO Reporting Form for each ID.
  - *What type of MA Class I RECs were bought and retired?*
    - Unbundled MA Class I RECs (RECs bought independent from a Power Purchase Agreement)
    - Bundled MA Class I RECs (RECs and electricity bought through a Power Purchase Agreement inside New England).
  - *How many RECs did you buy and retire?*
  - *Upload supporting documentation for the retirement of RECs*

### 3. Did you buy and retire MA Class I Renewable Energy Certificates (RECs) in 2024? \*

- ☒ Yes  
☐ No

What type of MA Class I RECs were bought and retired?\* (Select all that apply)

- ☐ Unbundled MA Class I RECs (RECs bought independent from a Power Purchase Agreement).  
☐ Bundled MA Class I RECs (RECs and electricity bought through a Power Purchase Agreement inside New England).

How many RECs did you buy and retire for this building?\*

*Note: 1 REC equals 1 MWh of renewable energy*

- ☐ I attest that all reported MA Class I RECs were generated between January 1, 2023 and December 31, 2024.\*  
☐ I attest that all reported MA Class I RECs were or will be retired by June 30, 2025.\*  
☐ I attest that all reported RECs are qualified MA Class I RECs.\*

**Please upload supporting documentation for the retirement of MA Class I REC's under NEPOOL.\***

*Supporting documentation must clearly show:*

- *Proof that the REC was retired from NEPOOL, including the retirement date.*
- *The serial numbers of the RECs that were retired.*
- *The year of generation of the retired RECs.*
- *The quantity of RECs that were retired.*

*Supporting documentation may include one of the following:*

- *A screenshot from the NEPOOL registry showing that the RECs were retired in the building owner's name. This is generally only available to buyers of large amounts of RECs (bulk purchasing).*
- *An attestation from a third-party that retired RECs on behalf of the building owner. This is generally available to building owners that purchased RECs through a third-party who does bulk REC retirements, often on behalf of multiple parties.*

Supporting documentation for the retirement of MA Class I REC's under NEPOOL



**Upload files**

Drop files or click here to upload

A night photograph of a city street, likely in New Orleans, featuring a church dome in the background and trees decorated with white lights. The scene is dimly lit with a blue tint, and a semi-transparent dark blue band across the middle contains the text.

# Questions?



## Entering a Power Purchase Agreement (PPA) outside New England

### Requirements for any PPA outside New England:

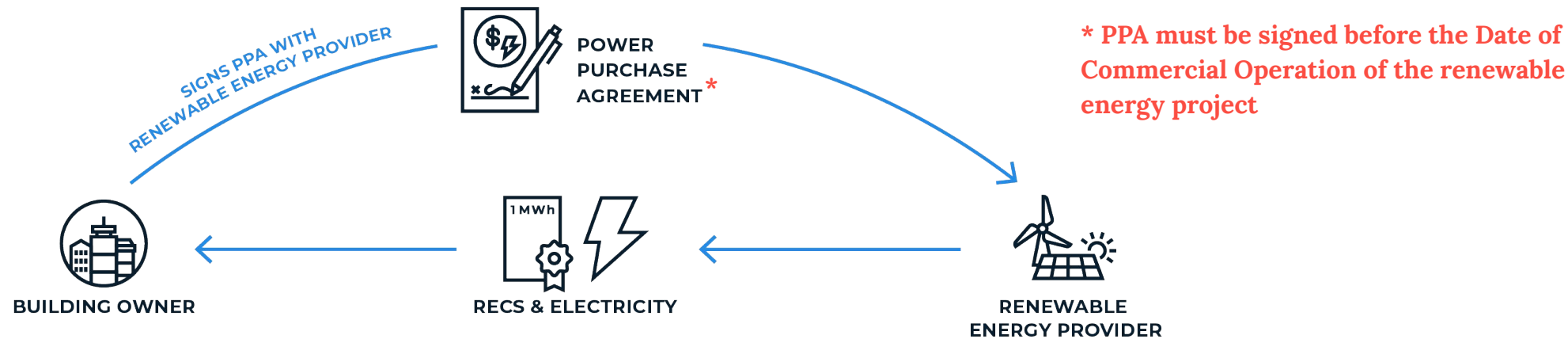
- Renewable energy facility must be connected to **any grid in the contiguous U.S. or Canada**
- Building owners must buy **both the electricity and its associated RECs**.
  - Bundled PPA signed directly between the BERDO building owner and a renewable energy provider; or
  - Bundled PPA + retail agreement arrangement including a retail supplier.
- PPA must meet **“additionality”**, i.e. PPA (and any associated retail agreement) must be signed before commercial operation of the renewable energy facility.
- RECs must be generated **within the compliance year or within the 12 months prior**.
- RECs must be retired within **6 months end of the compliance year** for which they are used.
- RECs must meet MA Class I RECs requirements except for location and metering.



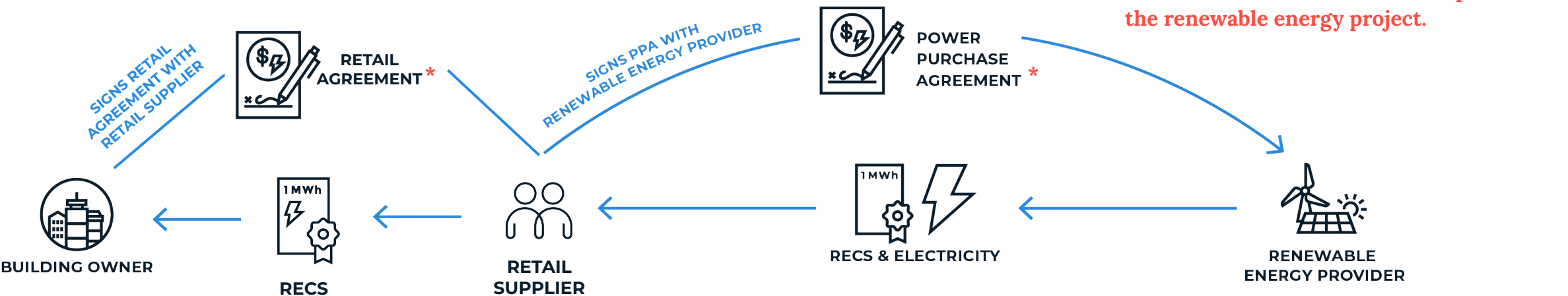
# Eligible bundled PPA arrangements



## BUNDLED PPA BETWEEN BUILDING OWNER AND RENEWABLE ENERGY PROVIDER



## BUNDLED PPA + RETAIL AGREEMENT BETWEEN BUILDING OWNER AND RETAIL SUPPLIER



# Approval of PPAs outside New England

## [Application form](#)

- Building owners or third-parties must request the Environment Department to **approve** PPAs outside New England (see [process and form questions in BERDO Compliance Guide](#)).
- Any PPA that is approved by the Environment Department is assigned a unique **PPA ID** number.
- **After PPA approval:** Following the approval of the PPA, Building Owners must simply reference the PPA ID in annual reporting and submit proof of retirement of the Renewable Energy Certificates associated with the PPA, including their date of generation and date of retirement.

### **Please note that:**

- **A PPA cannot be approved or assigned a PPA ID until signed by at least one BERDO building owner.** Parties seeking advice on whether a prospective PPA meets the BERDO requirements may contact the Environment Department by emailing [retrofit@boston.gov](mailto:retrofit@boston.gov). Staff may provide guidance but will not officially approve a PPA until all required documentation is submitted via the application form.
- Based on extenuating circumstances, owners may request that the [Review Board](#) approve a PPA that does not meet the additionality criterion.
- PPAs that meet BERDO requirements when signed can be used for compliance throughout the contract, including any extensions.

# Reporting Power Purchase Agreements Outside of New England

1. **Energy Star Portfolio Manager** – No Reporting Required
2. **BERDO Reporting Form** – Answer required questions on “Renewable Energy” section of the BERDO Reporting Form for each ID.
  - Enter approved PPA ID – [PPA Approval Request Form](#)
  - Enter the number of RECs associated with the PPA that were bought and retired
  - Upload supporting documentation for the retirement of qualified RECs

**4. Did you buy and retire eligible Renewable Energy Certificates (RECs) outside New England in 2024 through a Power Purchase Agreement (PPA) approved by the Environment Department? If so, please enter the PPA ID assigned to your PPA. If you have not yet received a PPA approval, please click on the PPA approval request form below to complete and submit.\***

POWER PURCHASE AGREEMENTS APPROVAL REQUEST FORM

- ☒ Yes  
☐ No

Enter the PPA ID (Format as PPA0000X):\*

How many RECs associated with the PPA did you buy and retire for this building? \*

*Note: 1 REC equals 1 MWh of renewable electricity*

- ☐ I attest that all reported RECs associated with the PPA were generated between January 1, 2023 and December 31, 2024.\*
- ☐ I attest that all reported RECs associated with the PPA were or will be retired by June 30, 2025.\*

**Please upload supporting documentation for the retirement of qualified RECs within their associated REC registry.\***

*Supporting documentation must clearly show:*

- *Proof that the REC was retired through an eligible GIS authority, including the retirement date.*
- *The serial numbers of the RECs that were retired.*
- *The year of generation of the retired RECs.*
- *The quantity of RECs that were retired.*

*Supporting documentation may include one of the following:*

- *A screenshot from the relevant REC registry showing that the RECs were retired in the building owner's name. This is generally only available to buyers of large amounts of RECs (bulk purchasing).*
- *An attestation from a third-party that retired RECs on behalf of the building owner. This is generally available to building owners that purchased RECs through a third-party who does bulk REC retirements, often on behalf of multiple parties.*



**Upload files**

Drop files or click here to upload

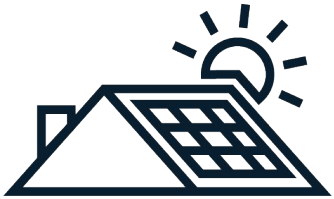


A night photograph of a city street decorated with white string lights on trees and buildings. In the background, a church with a lit dome is visible. People are walking on the street, and a man in the foreground is taking a photo with his phone. The word "Questions?" is overlaid in large white text on the left side.

# Questions?

## 4

## Using Local Renewable Energy (Solar Arrangements)

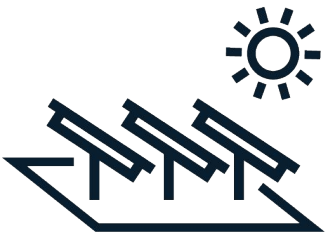


### OPTION 1: ON-SITE SOLAR LOCATED “BEHIND THE METER”

**LOCATION:** The solar array is physically installed on your property and **directly connected to your building's electric system**. The most common example is rooftop solar.

**BILLING STRUCTURE:** When you use on-site solar located behind-the-meter, your building uses solar power first, and only pulls power from the electric grid when needed.

- **Your Eversource bill shows your net electricity usage in kWh.** This means that on-site solar located behind-the-meter directly reduces the monthly kWh reported in your Eversource bill.



### OPTION 2: SOLAR NET-METERING CREDITS

**LOCATION:** The solar array is physically installed **outside of your property** or it is located **on-site but is not directly connected to your building's electric system**.

**BILLING STRUCTURE:** When you use solar net metering credits, your building does not physically consume solar power. The solar array is sending power directly into the grid, and you get **on-bill credits** for the share of solar power that you produced or purchased.

- **Your Eversource bill shows your total electricity usage from the grid in kWh. No solar usage is reported on the bill.**

# Identifying your solar arrangement

## OPTION 1: ON-SITE SOLAR LOCATED “BEHIND THE METER”

EVERSOURCE

Account Number: 0000 000 0000

Customer name key: CUST

Statement Date: 04/25/19

Service Provided To:  
JOHN J CUSTOMER

Service Address: ANY STREET  
ANY TOWN, MA 00000

Rate: 66 R1 RESIDENTIAL Bill Cycle: 15

Service from 03/22/19 - 04/23/19 32 Days

Next read date on or about: May 22, 2019

Meter Number	Current Read	Previous Read	Current Usage	Reading Type
0000000	1520	1841	-321	Actual

Monthly kWh Use

Apr	May	Jun	Jul	Aug	Sep	Oct
0	0	0	234	669	344	79
Nov	Dec	Jan	Feb	Mar	Apr	
252	19	0	0	0	0	

Other Charges or Credits

NET MTR CRDT -321 KWH X 0.22461	-\$72.10
Subtotal Other Charges or Credits	-\$72.10
Total Current Charges	-\$65.10

NET USAGE

NEGATIVE NET USAGE IS RECORDED AS ZERO AFTER EACH MONTH

NET USAGE KWH NUMBER IS USED TO REDUCE YOUR BILL AMOUNT

## OPTION 2: SOLAR NET-METERING CREDITS

EVERSOURCE

No Payment Due

Continued from previous page...

Energy Efficiency	1955 kWh X .01073	\$20.98
Subtotal Delivery Services		\$231.53
Total Cost of Electricity		\$445.80

Other Charges or Credits

SUPPLIER TRANSFER	\$223.93
NET METERING CREDIT	-\$409.50
SALES TAX	\$13.39
TRANSFER	-\$223.93
Subtotal Other Charges or Credits	-\$396.11
Total Current Charges	\$49.69

Continued from previous page...

Demand Profile

Max. Demand

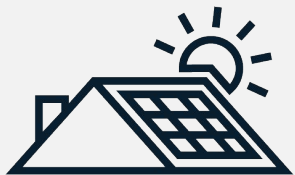
Month	Demand (Max)
Nov	5.5
Dec	6.0
Jan	7.5
Feb	7.5
Mar	7.0
Apr	6.0
May	5.0
Jun	7.0
Jul	7.8
Aug	7.8
Sep	6.5
Oct	6.0
Nov	5.0

NET METERING CREDITS ARE ADDED ONLY AS ON-BILL DOLLAR CREDITS WITH NO ASSOCIATED NET USAGE

# Determining if your solar arrangement requires MA Class I REC Retirement

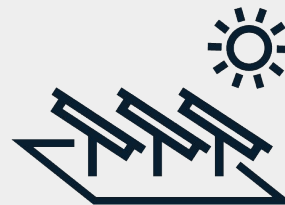
**You may use local solar power and/or solar net metering credits without retiring MA Class I RECs if your solar arrangement meets one of the following set of eligibility criteria:**

1. The solar array is located in Boston; or
2. The solar array is located in Eversource Eastern MA (outside of Boston); the solar array began operation prior to 2024; and your building began receiving net metering credits from the solar array prior to 2024.



## OPTION 1: ON-SITE SOLAR LOCATED “BEHIND THE METER”

Always eligible without  
MA Class I REC retirement



## OPTION 2: SOLAR NET-METERING CREDITS

Eligible without MA Class I REC  
retirement ONLY IF you meet the  
eligibility criteria above



# Reporting Solar Data - Behind the Meter

Review our How To Report Solar Guidance - [Linked here](#) and on [boston.gov/berdo](https://boston.gov/berdo)

1. **Energy Star Portfolio Manager** - Enter net electricity usage.  
Optional to enter solar use in kWh as an additional solar meter.
2. **BERDO Reporting Form** - Answer required questions on “Renewable Energy” section of the BERDO Reporting Form for each ID.
  - *How much solar electricity did this building receive in 2024? (kWh)*

# Reporting Solar Data - Net-Metering Credits

Review our How To Report Solar Guidance – [Linked here](#) and on [boston.gov/berdo](https://boston.gov/berdo)

1. **Energy Star Portfolio Manager** – Enter total electricity usage. No reporting of solar use required.
2. **BERDO Reporting Form** – Answer required questions on “Renewable Energy” section of the BERDO Reporting Form for each ID.
  - *How much solar electricity did this building receive in 2024? (kWh)*
  - *Upload supporting documentation on solar usage, solar array location, Commercial Operation Date, and date solar was received*

**5. Did you use solar or other local renewable energy in 2024?\* (Select all that apply)**

- ☐ Yes, my building has on-site solar located behind-the-meter, which reduces the monthly electricity consumption on my utility bill.
- ☒ Yes, my building receives solar net-metering credits, which reduces the monthly cost of my utility bill through on-bill dollar credits. (This may include on-site and off-site solar that is located front-of-the-meter, off-site net metering, virtual net-metering credits, community solar, leased rooftop solar, Alternative On-Bill Credits, or solar Power Purchase Agreements.)
- ☐ Yes, my building uses other local renewable energy located in Boston (e.g. wind)
- ☐ No

You may use solar net-metering credits without retiring MA Class I RECs if it meets one of the following criteria:

(1) The solar array is located in Boston.

(2) The solar array is located in Eversource Eastern MA (outside of Boston), provided that the solar array began operation prior to 2024, and your building began receiving net metering credits from the solar system prior to 2024.

For all other scenarios, retirement of MA Class 1 RECs is also required for solar net-metering credits to be used for BERDO compliance.

Please confirm that your solar net-metering credits fall under ONE of the following cases:\*

- ☐ I attest that the solar array from which I receive net metering credits is located within Boston, MA.
- ☐ I attest that I am using a solar array in Eastern MA that began operation prior to 2024 and that my building began receiving net metering credits from the solar array prior to 2024.
- ☐ I retired the MA Class I RECs associated with the net metering credits and reported these RECs under Question 3 of this section.

How much solar electricity did this building receive in 2024? (kWh)\*

*You must obtain this information from your solar provider.*

Please upload supporting documentation for the annual solar electricity usage.\*

*This may include bills or an allocation report*

*from your solar provider that explicitly shows the kWh associated with the net-metering credits you received.*



**Upload files**

Drop files or click here to upload

Location of the solar array\*

Street Address

Street Address 2

City

State

ZIP

Commercial Operation Date (COD) of the solar array\*

Date when the building began receiving net metering or generation credits from the solar array\*

Please upload supporting documentation for the solar array.\*

Supporting documentation must clearly show:

- The name and street address of the solar array.
- The Commercial Operation Date (COD) of the solar array.
- The date when the building first began receiving net metering or generation credits from the solar array.

Supporting documentation may include one or more of the following:

- A redacted contract with your solar provider that shows the information above.
- An attestation from your solar provider that shows the information above.
- A billing or allocation report from your solar provider
- The relevant Schedule Z form submitted to Eversource.



Upload files

Drop files or click here to upload





# Questions?



The background of the slide is a dark blue aerial view of a city, rendered in white line art. The map shows a dense urban layout with numerous rectangular blocks of varying sizes, representing buildings and city blocks. A prominent curved road or highway winds through the center of the map. The overall style is architectural and technical, resembling a city planning or GIS map.

# Reminders and resources

# Start Taking Action on Emissions Reduction

*Plan for energy saving improvements and building electrification*



## UNDERSTAND YOUR BUILDING'S EMISSIONS

➤ Visit the [BERDO Calculator](#) to view your emissions projections and identify your source of emissions



## GET A MASS SAVE ENERGY AUDIT

➤ [Commercial and Industrial Facilities](#)

➤ [Residential](#)

➤ [Eligible Income Based Assistance](#)



## ASSESS YOUR BUILDING'S ENERGY PERFORMANCE

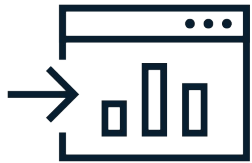
➤ Seek the assistance of a [building professional](#) to create a plan over time (Zero-Over-Time Plan)

➤ Take account of your capital budget, equipment age, and condition and consider upgrading and electrifying your building energy systems over time

## Reminder: BERDO Reporting Deadline



**May 15, 2025** is the deadline to submit your 2025 BERDO reporting on 2024 data.



Building owners may begin entering energy and water data into **Energy Star Portfolio Manager** as soon as their complete 2024 data is available.



**New BERDO reporting form** has been released with new updates for 2025.





# Reminder: Application Deadlines for Flexibility Measures

FLEXIBILITY MEASURE	DEADLINE	HOW TO APPLY
Short-Term HCP for 2025	Rolling Basis*	<ol style="list-style-type: none"><li>1. Review the corresponding <a href="#">Hardship Compliance Plan application guide</a>.</li><li>2. Email your application packet to <a href="mailto:BerdoReviewBoard@boston.gov">BerdoReviewBoard@boston.gov</a>.</li></ol>
Short-Term HCP for 2026	October 1, 2025	
Long-Term HCP for 2027 and later	April 1, 2026	
Building Portfolios and Individual Compliance Schedules	September 1, 2025	Submit an application form via <a href="#">the BERDO Application Page</a> .

*\*For owners with unforeseen circumstances in 2025*

# BERDO Webinar Series



All webinars are available at [boston.gov/berdo#events](https://boston.gov/berdo#events) (Registration required)

BERDO WEBINAR TITLE	DATE AND TIME	PAGE LINK
Hardship Compliance Plans for 2025 and 2026	Wednesday, March 5 2 - 3:30 pm	Recording available online
Launch of 2025 BERDO Reporting and Emissions Compliance	Wednesday, March 12 2 - 3:30 pm	Recording available online
Renewable Energy	Wednesday, April 2 2 - 3:30 pm	Recording will be available online
Condo Associations and BERDO Compliance	Tuesday, April 8 6 - 7:30pm	<a href="#">Register here</a>
Building Portfolios and Individual Compliance Schedules for 2026	Wednesday, May 21 2 - 3:30pm	<a href="#">Register here</a>

## Check out these BERDO Resources

### 1. Project your building's emissions

- [Use the BERDO Emissions Calculator](#)

### 2. Meet with a BERDO team member about emissions compliance

- [Schedule a one-on-one BERDO Building Consultation](#)
- Sign up for BERDO Office hours on [Zoom](#)

### 3. Apply for free BERDO reporting assistance\*

- [Apply for free reporting services and third-party verification](#)

### 4. Apply to receive free decarbonization planning assistance\*

- [Application for cohort 2 open now!](#)

### 5. Join one of our in-person BERDO Workshops!



*\*subject to eligibility requirements*

# Upcoming Event: BERDO In-Person Workshop



***April 16, 2025, 3:00 – 7:00 PM***

Bruce C. Bolling Municipal Building  
2300 Washington St, Roxbury, MA 02119

Attend the event and:

- Find out if you are eligible for **free reporting and verification services**
- Get a consultation with BERDO staff to:
  - *Complete annual reporting*
  - *Understand emissions projections + compliance options*
  - *Review flexibility measures*

**[RSVP HERE](#)**





# More BERDO Resources!



## Quick Guides

- [BERDO 101](#)
- [Emissions Compliance](#)
- [Renewable Energy](#)
- [BERDO Flexibility Measures](#)
- [BERDO Review Board](#)
- [Building Decarbonization](#)

## In Depth Guides

- [BERDO Compliance Guide](#)
- [BERDO Condo Handbook](#)
- [BERDO Solar Reporting Guide](#)
- [BERDO Emissions Factors List](#)



# Helpful Links

## BERDO Websites

- [boston.gov/berdo](https://boston.gov/berdo)
- [boston.gov/retrofithub](https://boston.gov/retrofithub)
- [boston.gov/berdo-review-board](https://boston.gov/berdo-review-board)

**Mass Save:** No-cost Mass Save energy audits, engineering studies, rebates and incentives:

- Non-residential: [MassSave.com/Business](https://MassSave.com/Business)
- Residential: [MassSave.com/Multi-Family](https://MassSave.com/Multi-Family)
- Rebates: [MassSave.com/Rebates](https://MassSave.com/Rebates)

A night photograph of a city street, likely in Chicago, featuring a church dome in the background and trees decorated with white lights. The scene is dimly lit, with a semi-transparent dark blue overlay across the middle. The word "Questions?" is written in large white font on the left side of the overlay.

# Questions?



# Thank You!

Please visit [boston.gov/berdo](https://boston.gov/berdo) and [boston.gov/berdo-review-board](https://boston.gov/berdo-review-board) for more information and updates.

