



Improvements to

FRANKLIN

PARK

TENNIS

EXPANSION

Community Meeting #3

Schematic Design

AGENDA

1

PROJECT TEAM

2

PROJECT GOALS AND SCOPE

3

PRESENTATION OF DESIGN CONCEPT

4

TREE EVALUATION

5

LISTENING AND DISCUSSION

6

CLOSING REMARKS & NEXT STEPS

Improvements to
Franklin Park Tennis
Community Meeting #3
Schematic Design

PROJECT TEAM

Lauren Bryant

Project Manager

lauren.bryant@boston.gov or 617-961-3019

Office of Neighborhood Services:

Roxbury:

Asha Janay

asha.janay@boston.gov

Mattapan:

Asiah Wotring

asiah.wotring@boston.gov

Mid-Dorchester: **Anthony Nguyen**

anthony.nguyen@boston.gov

Jamaica Plain: **Caroline Peters**

caroline.peters@boston.gov

Kyle Zick

Principal, Kyle Zick Landscape Architecture, Inc.

Yongjae Lee

Associate, Kyle Zick Landscape Architecture, Inc.

David Nardone

Principal, Vision Sports Design

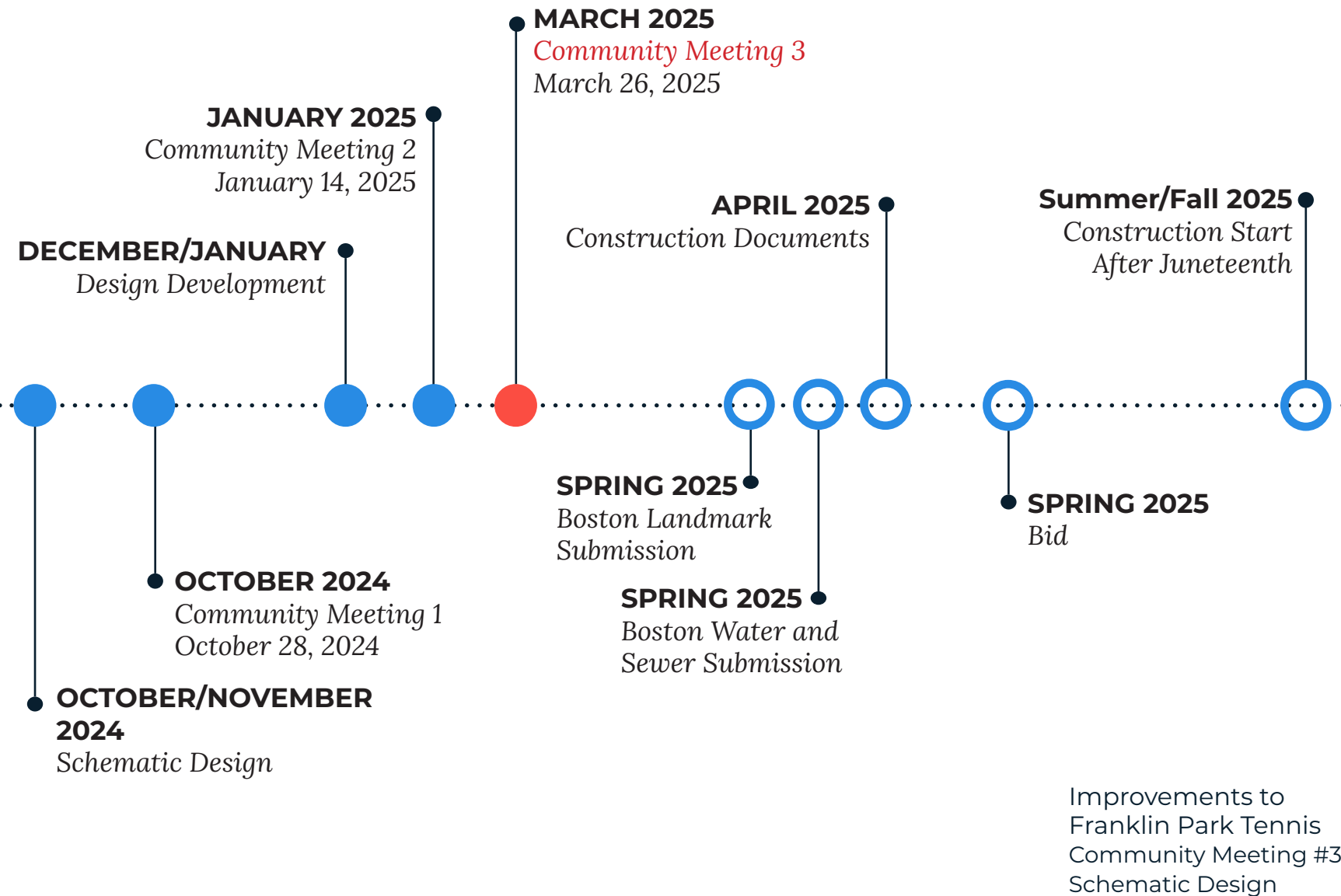


FRANKLIN PARK TENNIS DESIGN SCOPE OF WORK

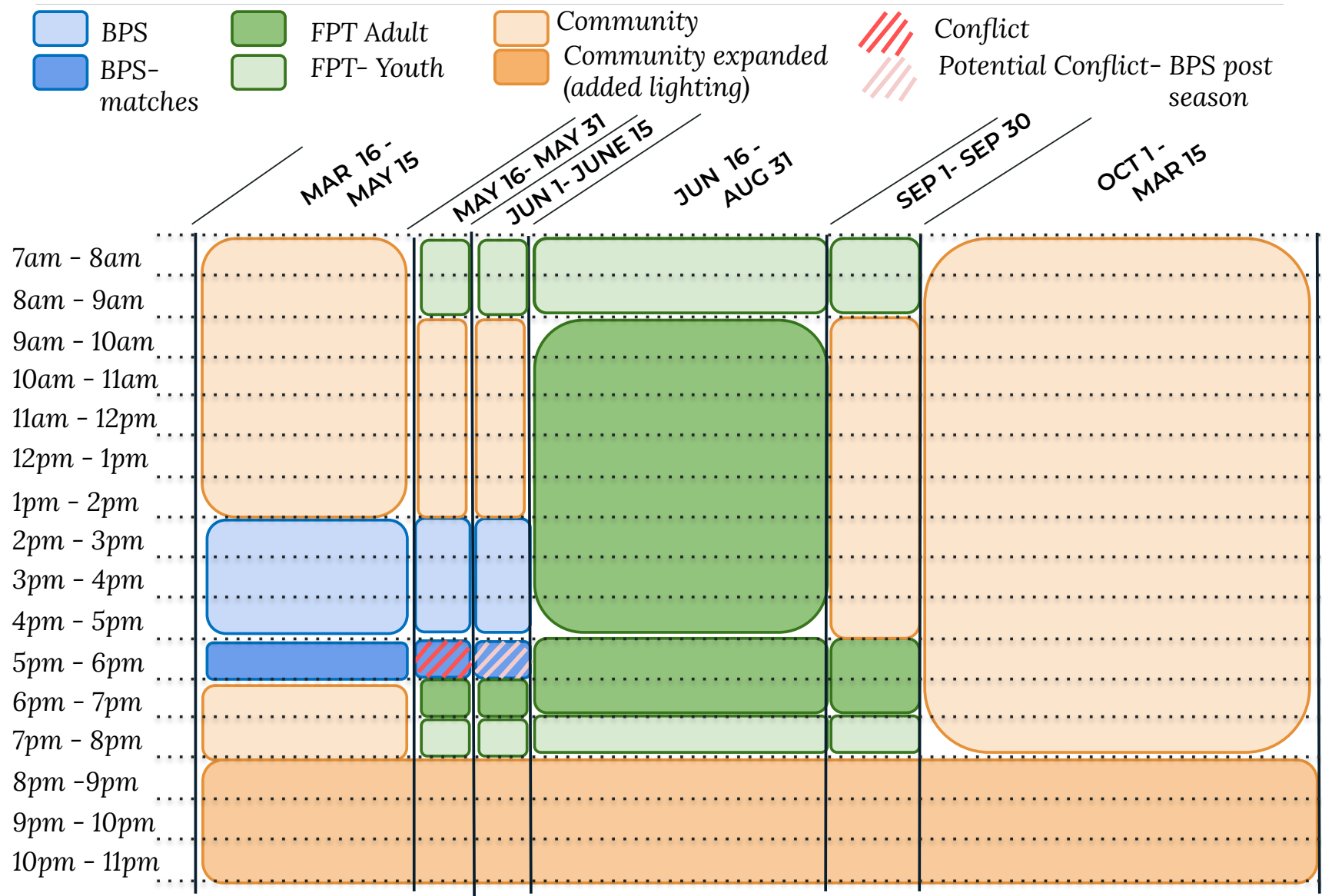
- **Tennis complex expansion**
- **Tennis lighting**
- **Picnic area**
- **Parking edge**
- **Pathways**



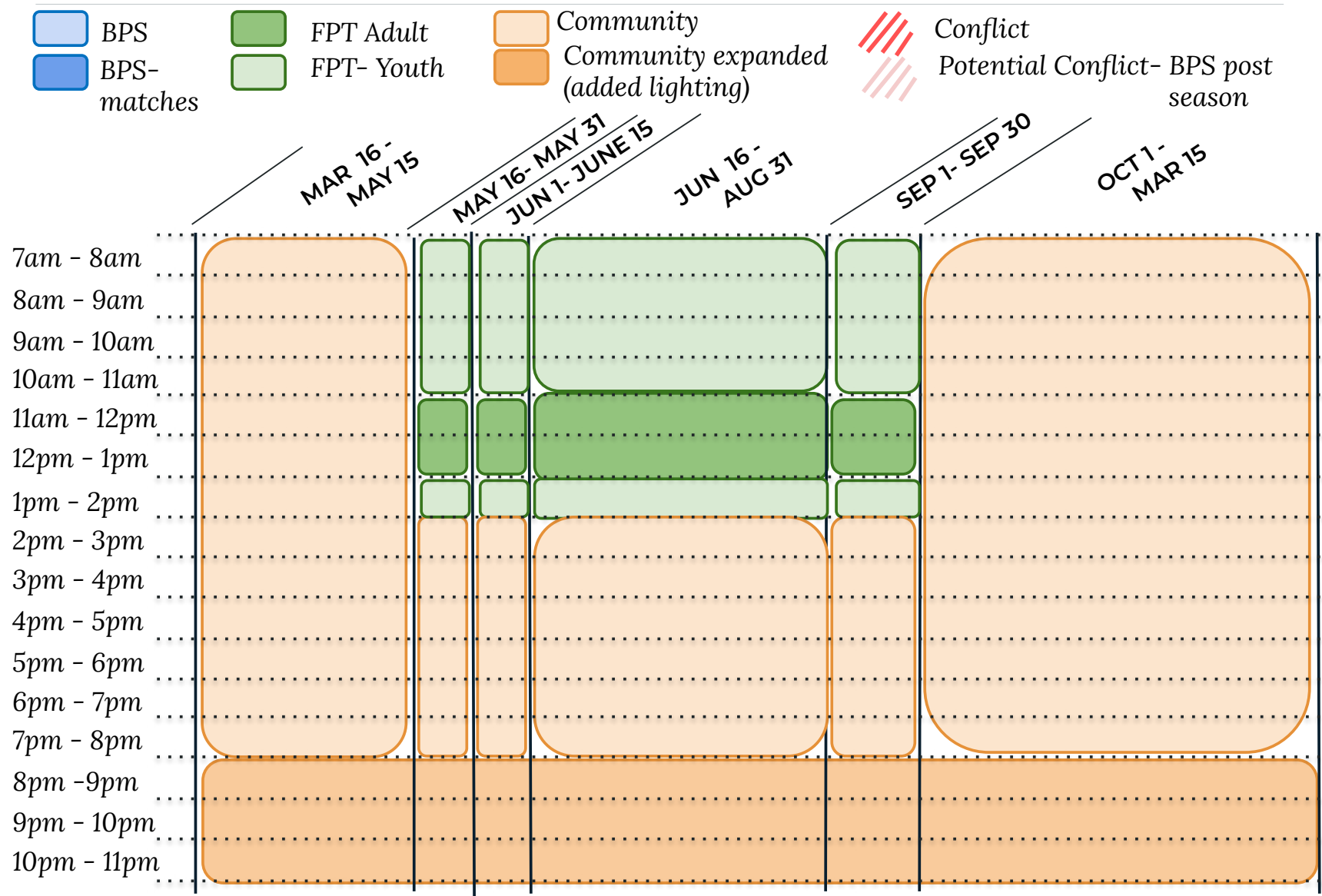
PROJECT SCHEDULE & FUNDING



TENNIS USAGE SCHEDULE-WEEKDAYS



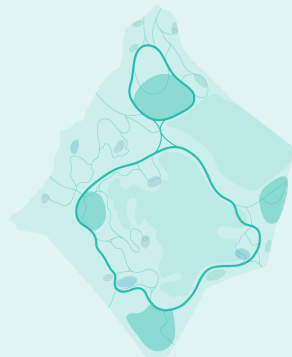
TENNIS USAGE SCHEDULE-WEEKENDS



The Big Picture

Amplify Magnet Destinations

Franklin Park was intended to serve as a common ground — a place for recreation, relaxation, and to experience nature — welcoming all communities and bringing people together for shared experiences that support discovery, education, and mental and physical health. We must celebrate all it has to offer and build on its long legacy of serving many groups in many ways. Larger centers of activity must be complemented by smaller destinations distributed throughout the park.



Diversifying Destinations

The park already has many, much-loved centers of activity. Larger destinations are often anchored by stakeholder offerings (like the zoo or the stadium), while smaller destinations are usually distributed and repeat throughout the park. Clarifying the design of each of these destinations and expanding their programming where desirable will ensure that all sides of the park can fully, and in distinct ways, serve gatherings both large and small.

Protecting Historic Features

While most of the historic structures in the park no longer exist or are in serious decline, they continue to draw visitors. The key remaining elements deserve a comprehensive conditions assessment and an updated historic structures report to inform either restoration or future transformation.



Investing in the Major Magnets

The park has a long legacy of serving many groups in many different ways - from performance and recreation to education and community building. Recommendations for the Major Magnets build on each of their histories and amplify the programs and character of each space, further enhancing these four major destinations, each with a defined identity and unique offerings.

Ellicottdale:
A Place for
Gathering & Relaxation

The Playstead:
A Center for Arts
& Recreation

Peabody Circle:
A Civic Gateway

The Yard:
A Commitment to
Care & Stewardship



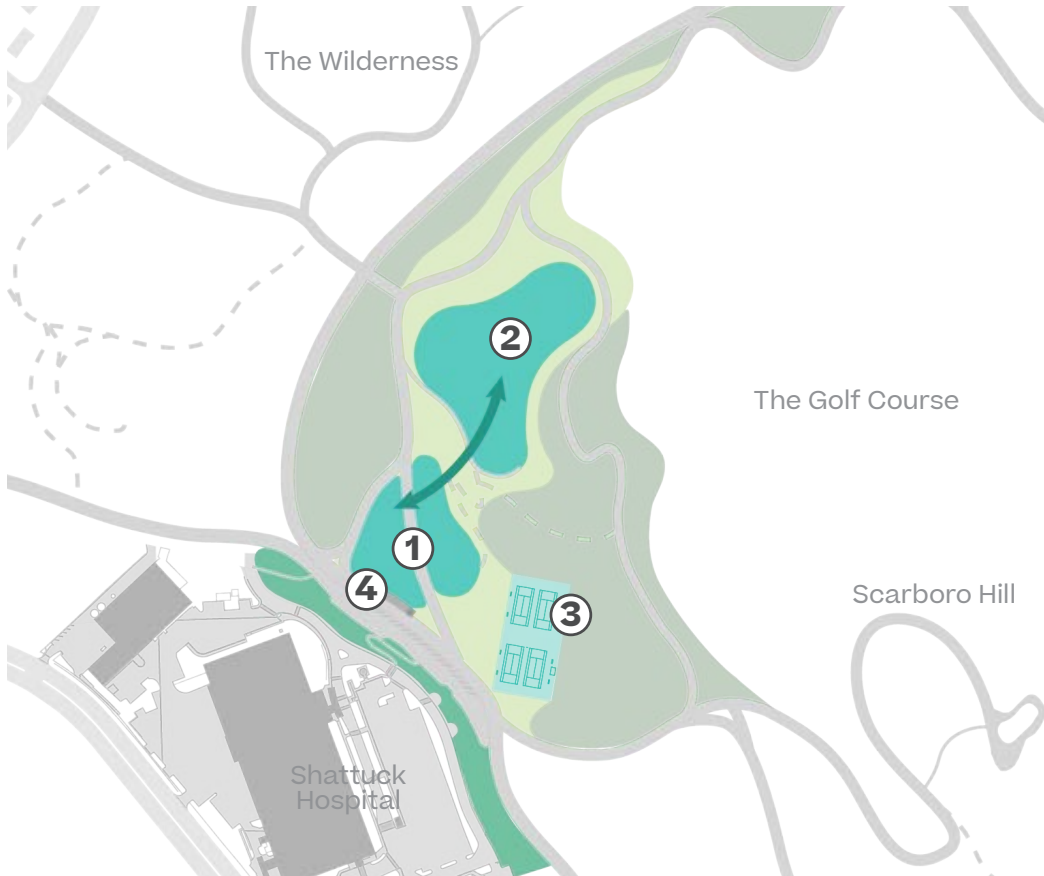
Mini Magnets

- High Points - Lookouts
- Low Points - Unique Ecologies
- Play & Education

Highlighting the Mini Magnets

The park's smaller destinations include wide-ranging improvements and programming that support the day-to-day use of the park. As opposed to the major magnets, these destinations may repeat on multiple sides of the park, promoting a more equitable distribution of certain programs and encouraging convenient and habitual use from the surrounding neighborhoods. Sometimes situated at elevational high or low points, mini magnets also allow visitors to experience the park's dramatic topography.

ELLICOTTTDALE'S OPEN LAWNS



Proposed Open Spaces

- ① Upper Lawns
- ② Lower Lawn
- ③ Expanded Tennis Courts
- ④ Pavilion / Shade Structure



Movie Night



Picnic



Informal
Lawn Games

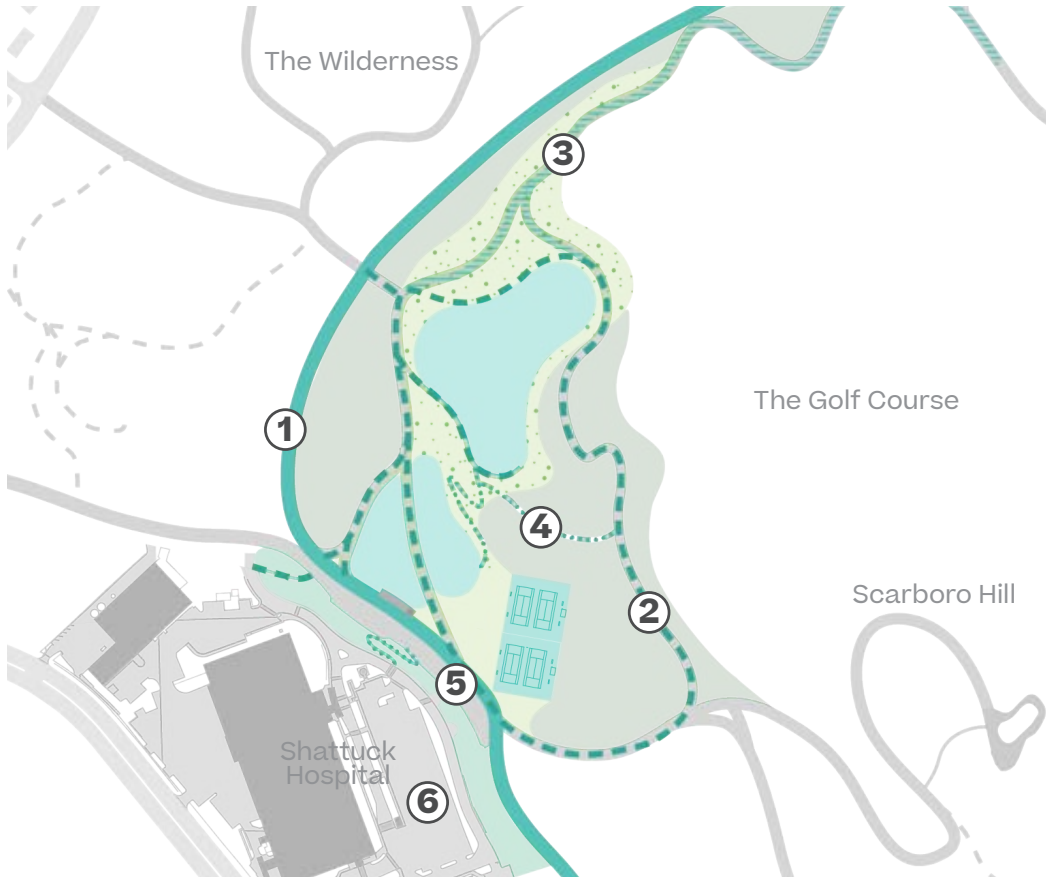


Exercise
Classes



BBQ

ELLICOTTDALE CIRCULATION & PLANTING



Proposed Circulation & Planting

- Open Lawns
- Buffer Planting
- Evergreen Planting
- Existing Adjacent Woodlands
- ① The Circuit Loop
- ② 1/2 mile Ellicott Loop
- ③ Flowering Tree Walk
- ④ Wet Woodland & Wet Meadow Trail
- ⑤ Parking Lot
- ⑥ Opportunity for some restored park land at the Shattuck site



Franklin Park Action Plan

Improvements to
Franklin Park Tennis
Community Meeting #3
Schematic Design

SCHEMATIC DESIGN TO REVIEW

1

5 TENNIS COURTS

2

TENNIS AMENITIES

3

PATHWAYS

4

ENTRANCES

5

PICNIC AREA

Improvements to
Franklin Park Tennis
Community Meeting #3
Schematic Design



FRANKLIN PARK -

Olmsted Lithographic Plan

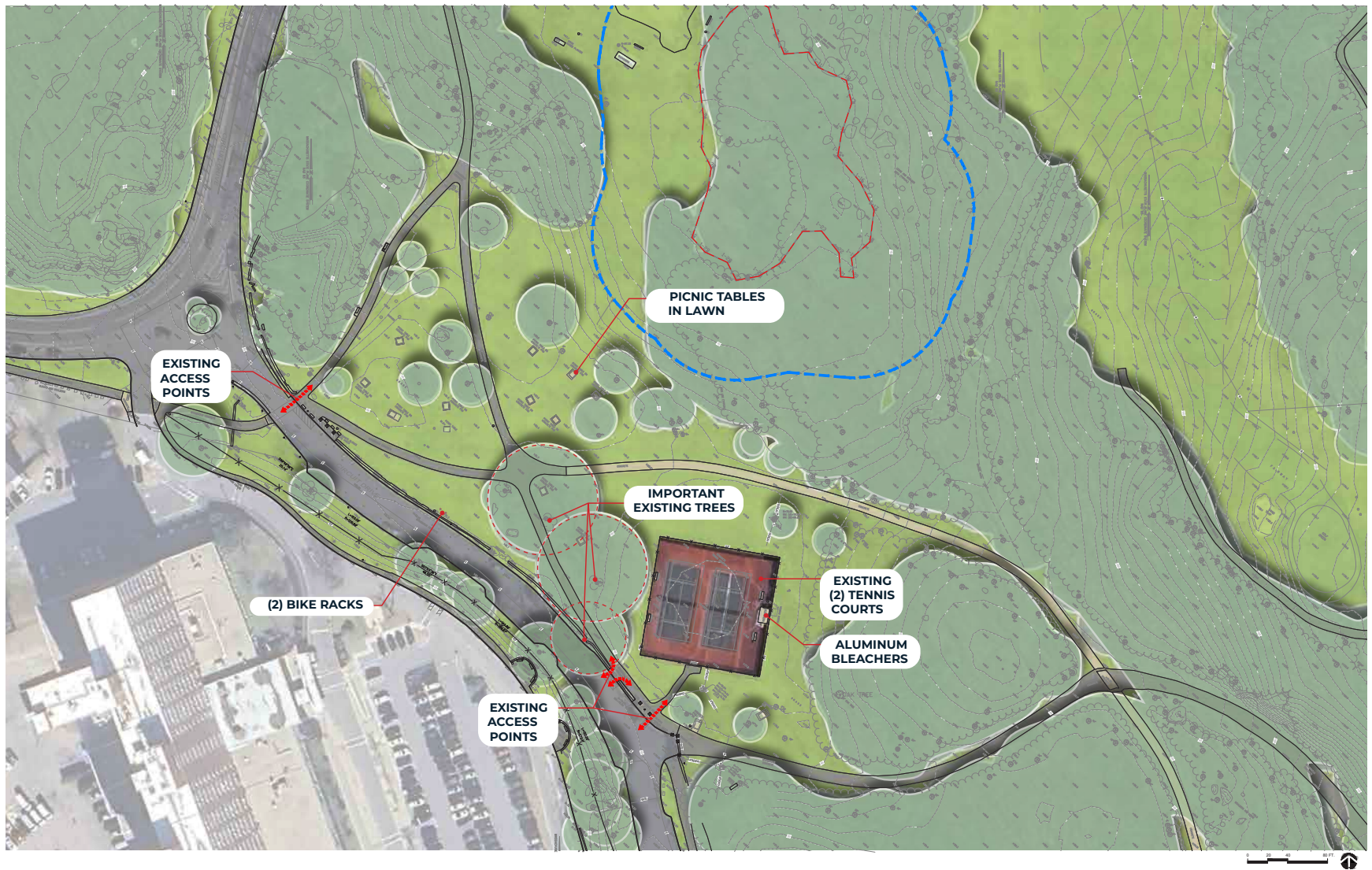
Improvements to
Franklin Park Tennis
Community Meeting #3
Schematic Design



FRANKLIN PARK -

Olmsted Lithographic Plan with Aerial Photo

Improvements to
Franklin Park Tennis
Community Meeting #3
Schematic Design



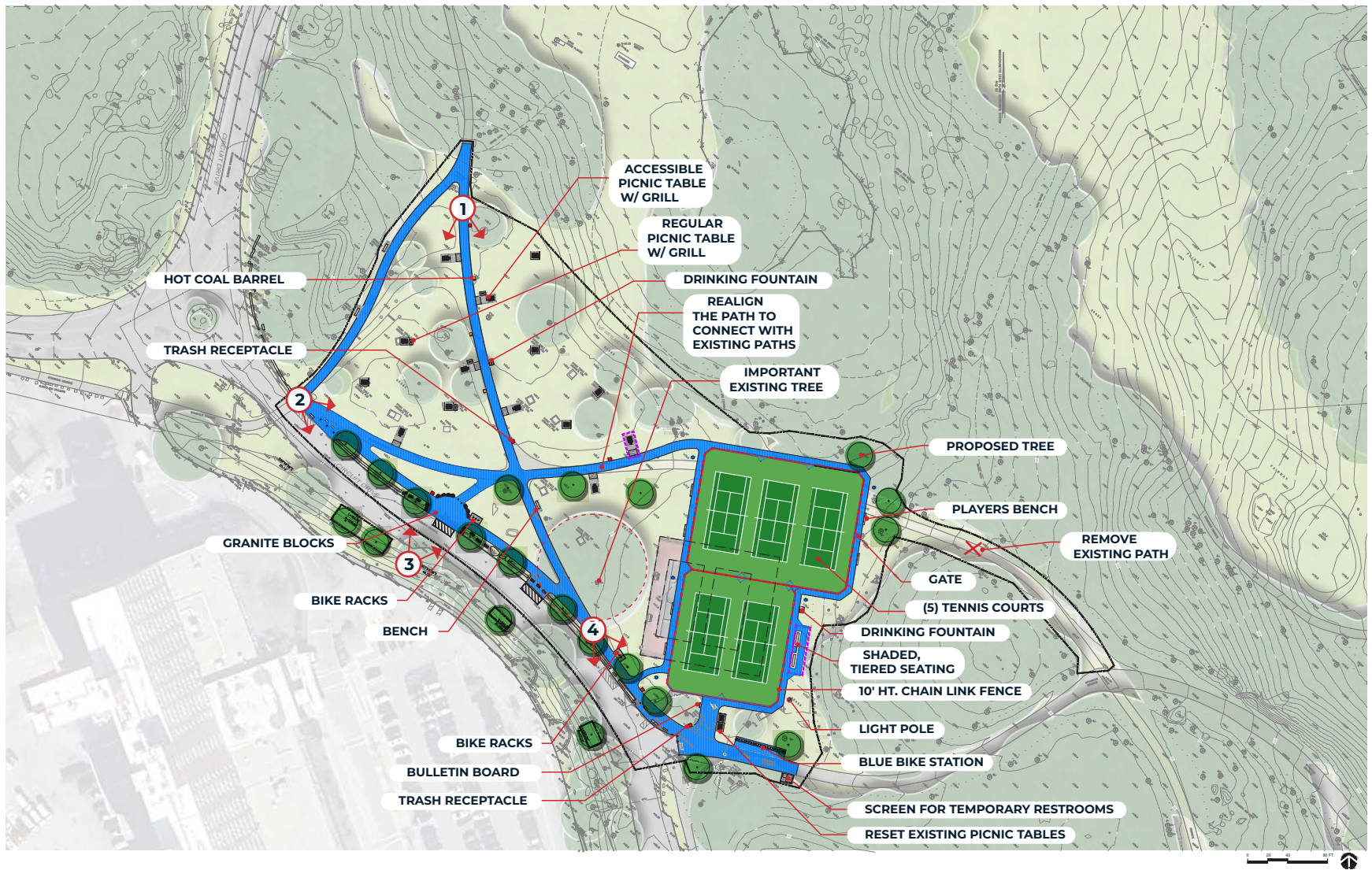
SITE ANALYSIS - EXISTING CONDITIONS PLAN

Improvements to
Franklin Park Tennis
Community Meeting #3
Schematic Design



SITE ANALYSIS - EXISTING CONDITIONS PLAN

Improvements to
Franklin Park Tennis
Community Meeting #3
Schematic Design



SITE CONCEPT - SITE PLAN OF 5 TENNIS COURTS

Improvements to
Franklin Park Tennis
Community Meeting #3
Schematic Design



SITE CONCEPT - SITE PLAN OF 5 TENNIS COURTS

Improvements to
Franklin Park Tennis
Community Meeting #3
Schematic Design



SITE VIEW #1



SITE CONCEPT - SITE VIEWS OF 5 TENNIS COURTS

Improvements to
Franklin Park Tennis
Community Meeting #3
Schematic Design



SITE VIEW #2



SITE CONCEPT - SITE VIEWS OF 5 TENNIS COURTS

Improvements to
Franklin Park Tennis
Community Meeting #3
Schematic Design



SITE VIEW #3



SITE CONCEPT - SITE VIEWS OF 5 TENNIS COURTS

Improvements to
Franklin Park Tennis
Community Meeting #3
Schematic Design



Puddingstone Edge

SITE CONCEPT - SITE ENTRY OPTIONS

Improvements to
Franklin Park Tennis
Community Meeting #3
Schematic Design



Running block wall and bollards

SITE CONCEPT - SITE ENTRY OPTIONS

Improvements to
Franklin Park Tennis
Community Meeting #3
Schematic Design



Running block wall

SITE CONCEPT - SITE ENTRY OPTIONS

Improvements to
Franklin Park Tennis
Community Meeting #3
Schematic Design



Puddingstone semi-circle and bollards

SITE CONCEPT - SITE ENTRY OPTIONS

Improvements to
Franklin Park Tennis
Community Meeting #3
Schematic Design

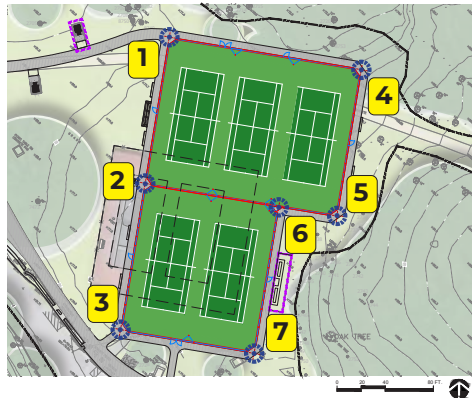
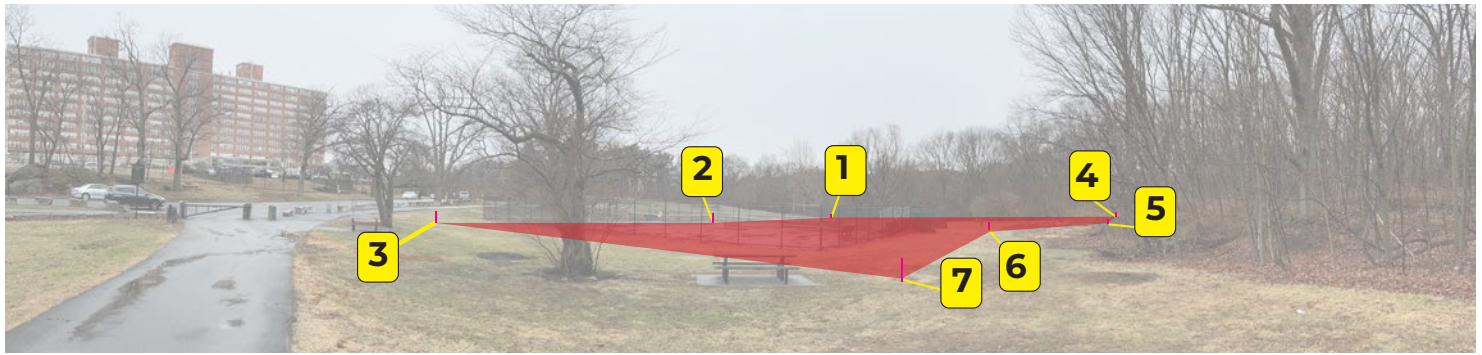


SITE VIEW #4



SITE CONCEPT - SITE VIEWS OF 5 TENNIS COURTS

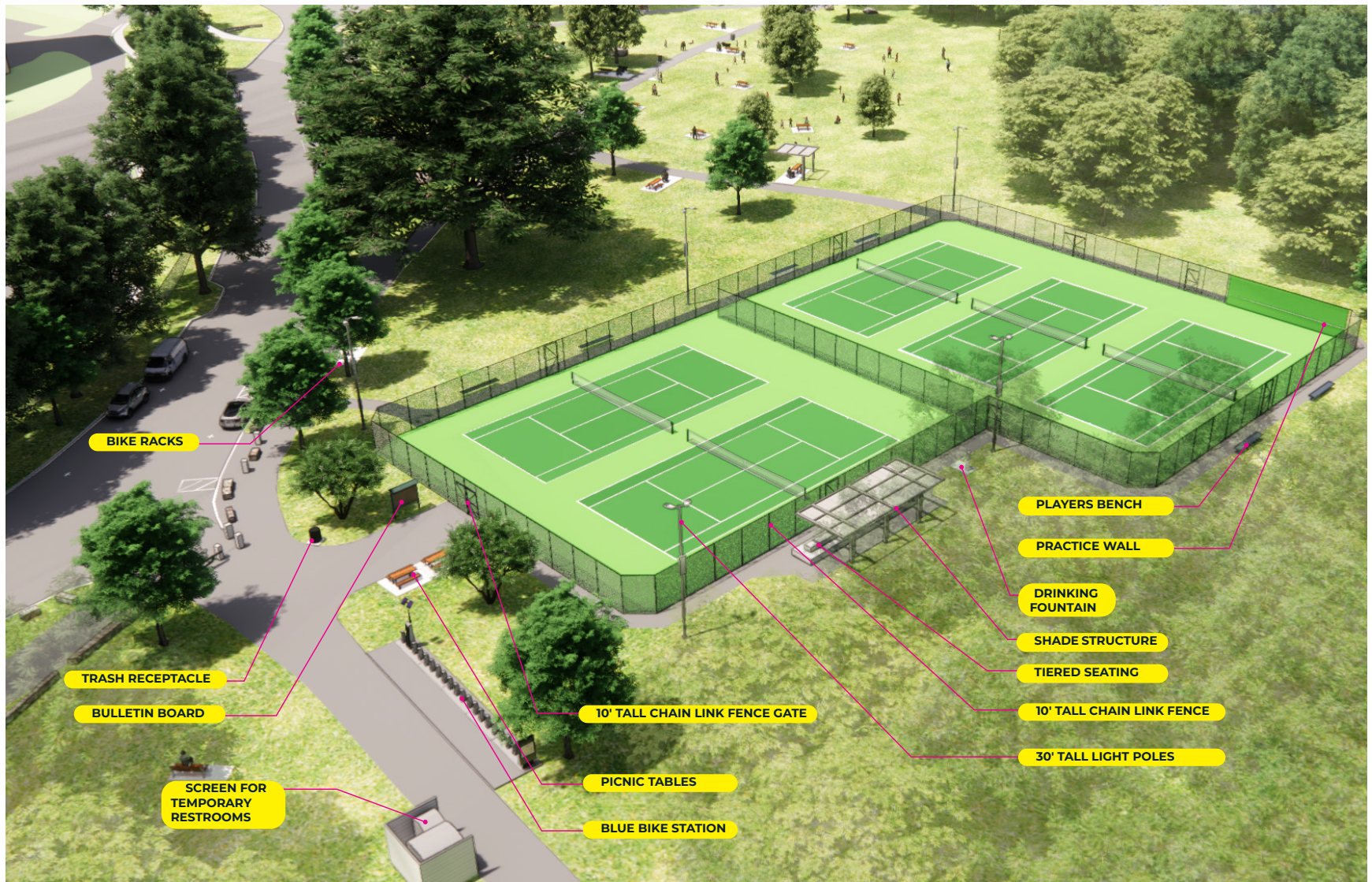
Improvements to
Franklin Park Tennis
Community Meeting #3
Schematic Design



SCHEMATIC DESIGN

PROPOSED TENNIS COURT LAYOUT - STAKING LOCATIONS

Improvements to
Franklin Park Tennis
Community Meeting #3
Schematic Design



SCHEMATIC DESIGN

TENNIS AMENITIES: SEATING, FENCE/GATE, LIGHTING

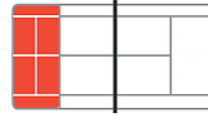
Improvements to
Franklin Park Tennis
Community Meeting #3
Schematic Design



GET STARTED. MOVE ON. LEVEL UP.

RED BALL

The tennis journey starts with the red level. Red balls can be made of foam or felt, are larger, bounce lower and travel slower than the standard yellow ball making it easier to learn and acquire skills.

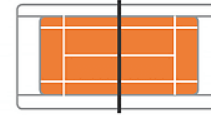


COURT SIZE: 36' x 18'

Red Courts are short and narrow, making it easy for players to focus on learning the fundamentals of the game.

ORANGE BALL

Orange balls travel through the air a little faster and farther than the red ball, but are the same size and still bounce lower than a yellow ball.



COURT SIZE: 60' x 21' - OR - 60' x 27' (DOUBLES)

Slightly smaller than the full-size 78' court, Orange Courts are ideal for players who are still developing their athletic, technical, and competitive skills.

GREEN & YELLOW BALLS

Green balls have a slightly reduced bounce compared to the yellow ball making the transition to a full-size 78' court much easier.



COURT SIZE: 78' x 27' - OR - 78' x 36' (DOUBLES)

At this stage, while continuing to improve their tactical and technical skills, a player's size does not hinder their ability to cover a full-size tennis court.

SCHEMATIC DESIGN TENNIS COURT COLOR OPTIONS

Improvements to
Franklin Park Tennis
Community Meeting #3
Schematic Design



Picnic Table



Accessible Picnic Table



Typical Bench



Grill



Bike Racks

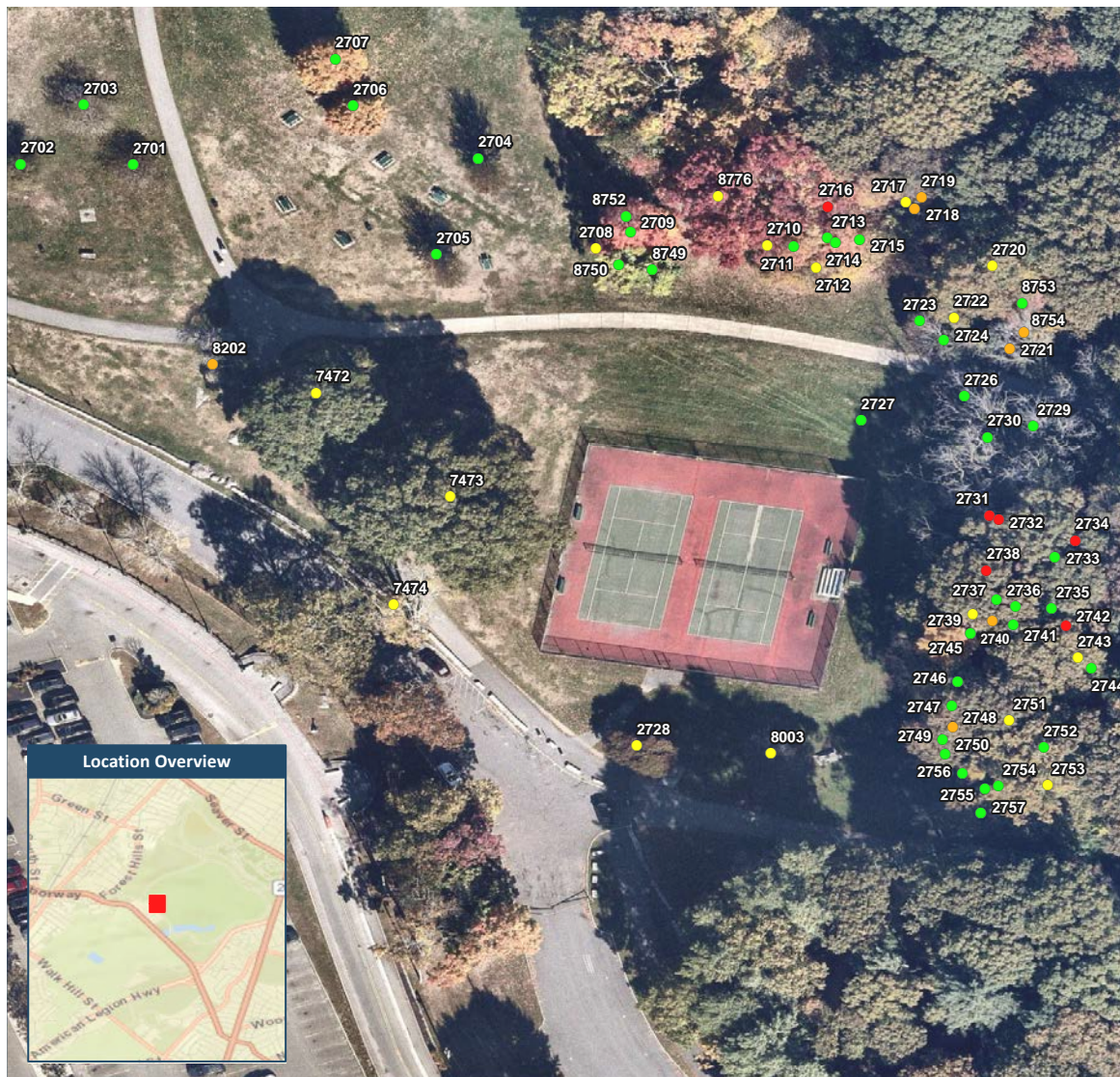


Precedent of Shade Structure

SCHEMATIC DESIGN -

PARK AMENITIES: PICNIC TABLES, GRILLS, TYPICAL BENCH

Improvements to
Franklin Park Tennis
Community Meeting #3
Schematic Design



Condition

● Good ● Fair ● Poor ● Dead

NOTE

ALL TREES WITHIN THE PROJECT LIMITS WERE REVIEWED BY A CONSULTING CERTIFIED ARBORIST AND THEN REVIEWED AGAIN BY THE BOSTON PARKS ARBORIST.

SCHEMATIC DESIGN TREE INVENTORY

Improvements to
Franklin Park Tennis
Community Meeting #3
Schematic Design



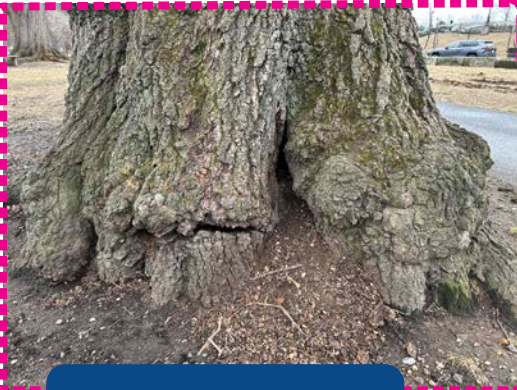
SCHEMATIC DESIGN

PROPOSED TREE REMOVALS

Improvements to
Franklin Park Tennis
Community Meeting #3
Schematic Design



**KENTUCKY COFFEETREE
WITH LARGE CRACK IN
TRUNK AND ON LARGE
BRANCH**



**LARGE OAK WITH
DECAYED TRUNK.
CRACK IN STRUCTURAL
ROOT**



PROBING DECAY START



**PROBING DECAY ALL
THE WAY THROUGH
BASE**

SCHEMATIC DESIGN EXISTING TREE REMOVAL

Improvements to
Franklin Park Tennis
Community Meeting #3
Schematic Design

DEAD



POOR



INVASIVE



DESIGN



**SMALL TREES PROPOSED
TO BE REMOVED
FOR TENNIS COURT
EXPANSION**

SCHEMATIC DESIGN EXISTING TREE REMOVAL

Improvements to
Franklin Park Tennis
Community Meeting #3
Schematic Design



SITE CONCEPT - SITE PLAN OF 5 TENNIS COURTS

Improvements to
Franklin Park Tennis
Community Meeting #3
Schematic Design



LISTENING & DISCUSSION

Help us build great parks.
Let us know what matters to you.

NEXT STEPS

NEXT STEP(S)

- Design Development
- Boston Landmarks Commission Review

VISIT PROJECT WEBSITE

WEB LINK:

<https://www.boston.gov/departments/parks-and-recreation/franklin-park-tennis-expansion>

Scan me with your
phone's camera!



Improvements to
Franklin Park Tennis
Community Meeting #3
Schematic Design

THANK YOU!

See the project website for future updates.



For questions, maintenance requests or
concerns regarding any of our
parks contact 311

