

The Galante Architecture Studio, Inc. expressly reserves the common law copyrights in these drawings. These drawings are not to be reproduced in any manner, nor are they to be assigned to a third party without the expressed written permission and consent of The Galante Architecture Studio, Inc.

Project Number  
2307

Project Title  
Renovation

116 Myrtle St  
Boston, MA 02114

Drawing Title

Existing  
Front Elevations

Date/Issued For  
11.08.2024

Permit

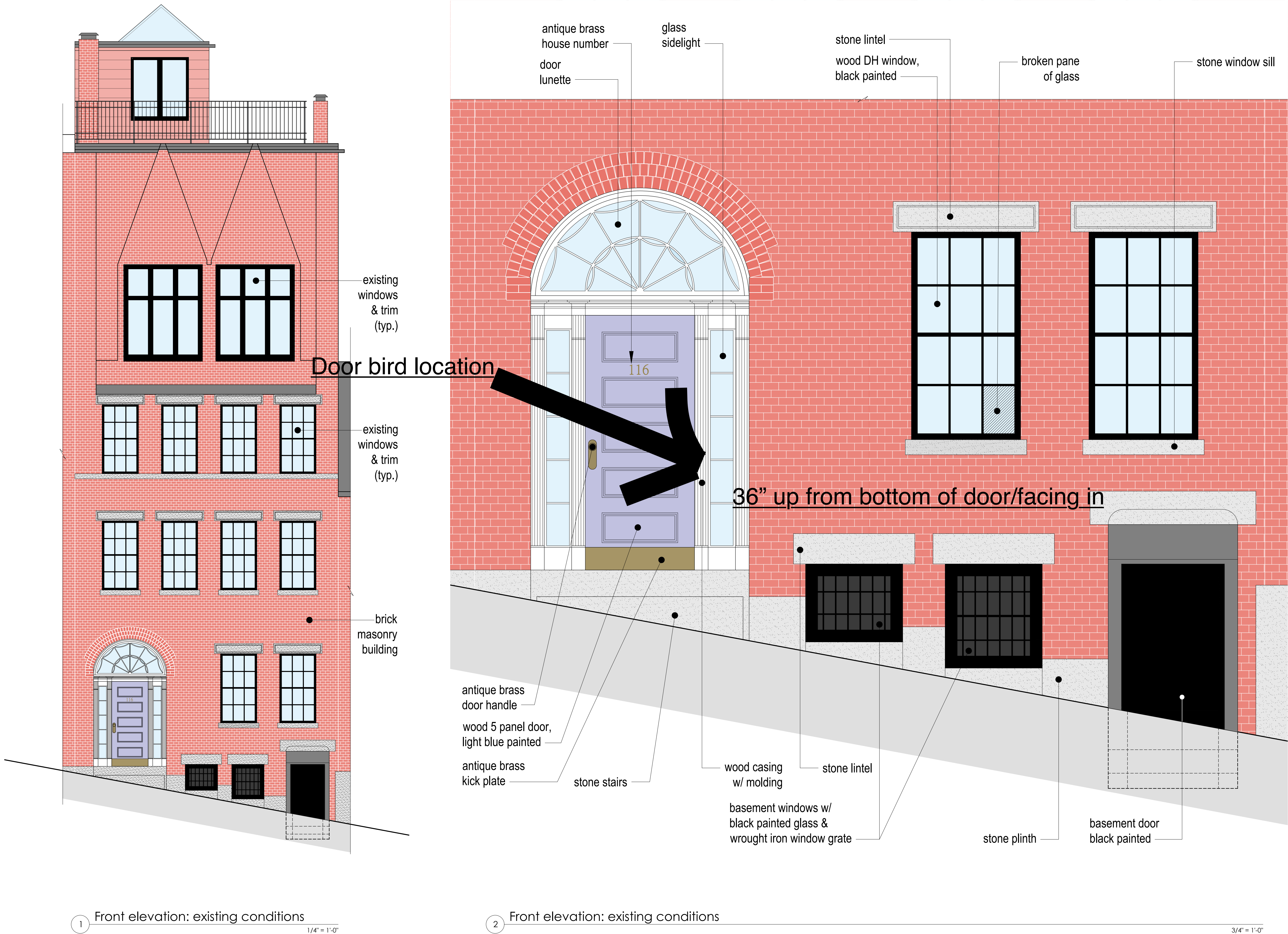
Print 24x36

Scale  
As Noted

Drawn By  
TGAS

Drawing Number

EC-201





The Galante Architecture Studio, Inc. expressly reserves the common law copyrights in these drawings. These drawings are not to be reproduced in any manner, nor are they to be assigned to a third party without the expressed written permission and consent of The Galante Architecture Studio, Inc.

Project Number  
2307

Project Title  
Renovation

116 Myrtle St  
Boston, MA 02114

Drawing Title

Proposed Alterations  
to the Front Elevation

Date/Issued For  
11.08.2024

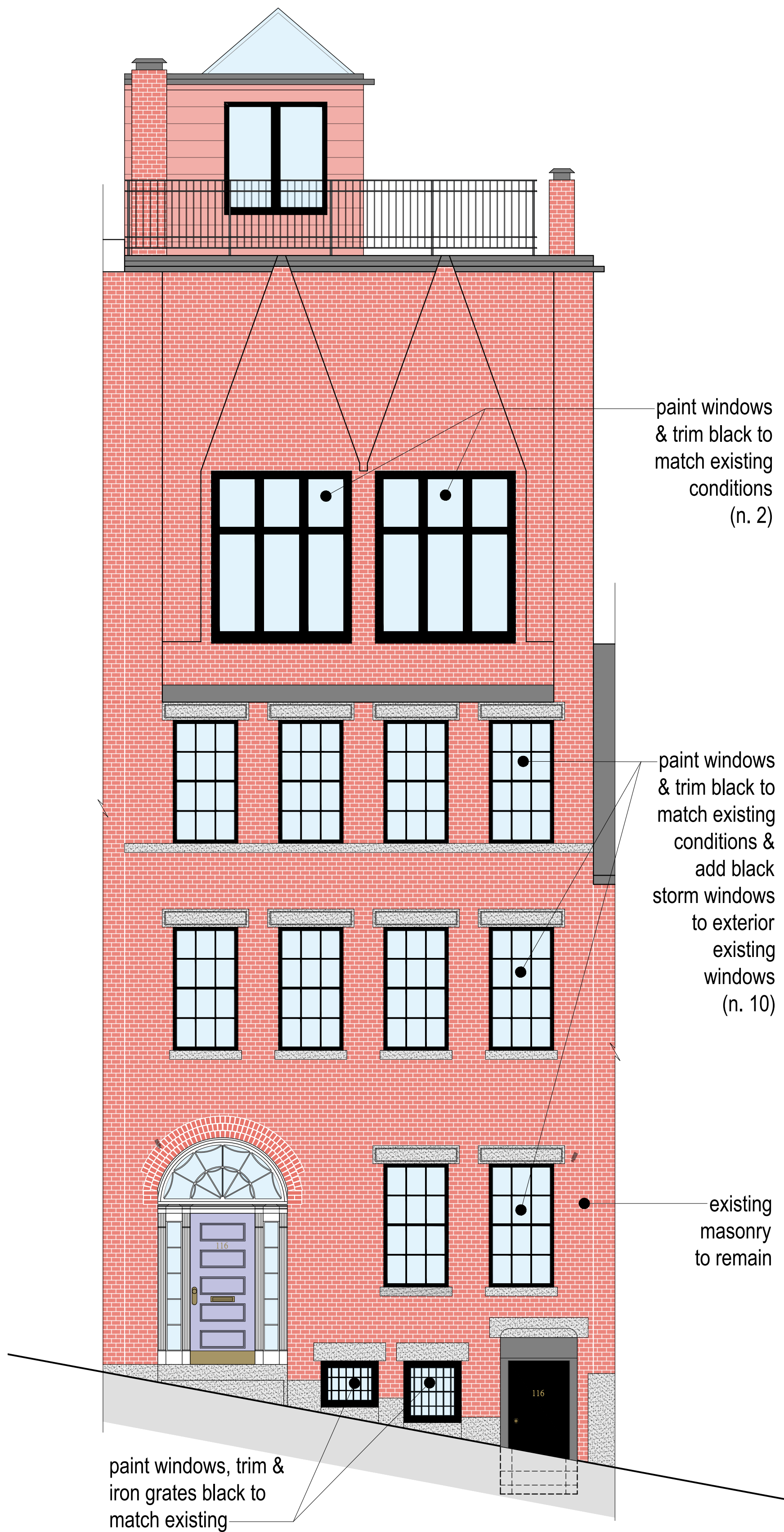
Permit

Print 24x36

Scale  
As Noted

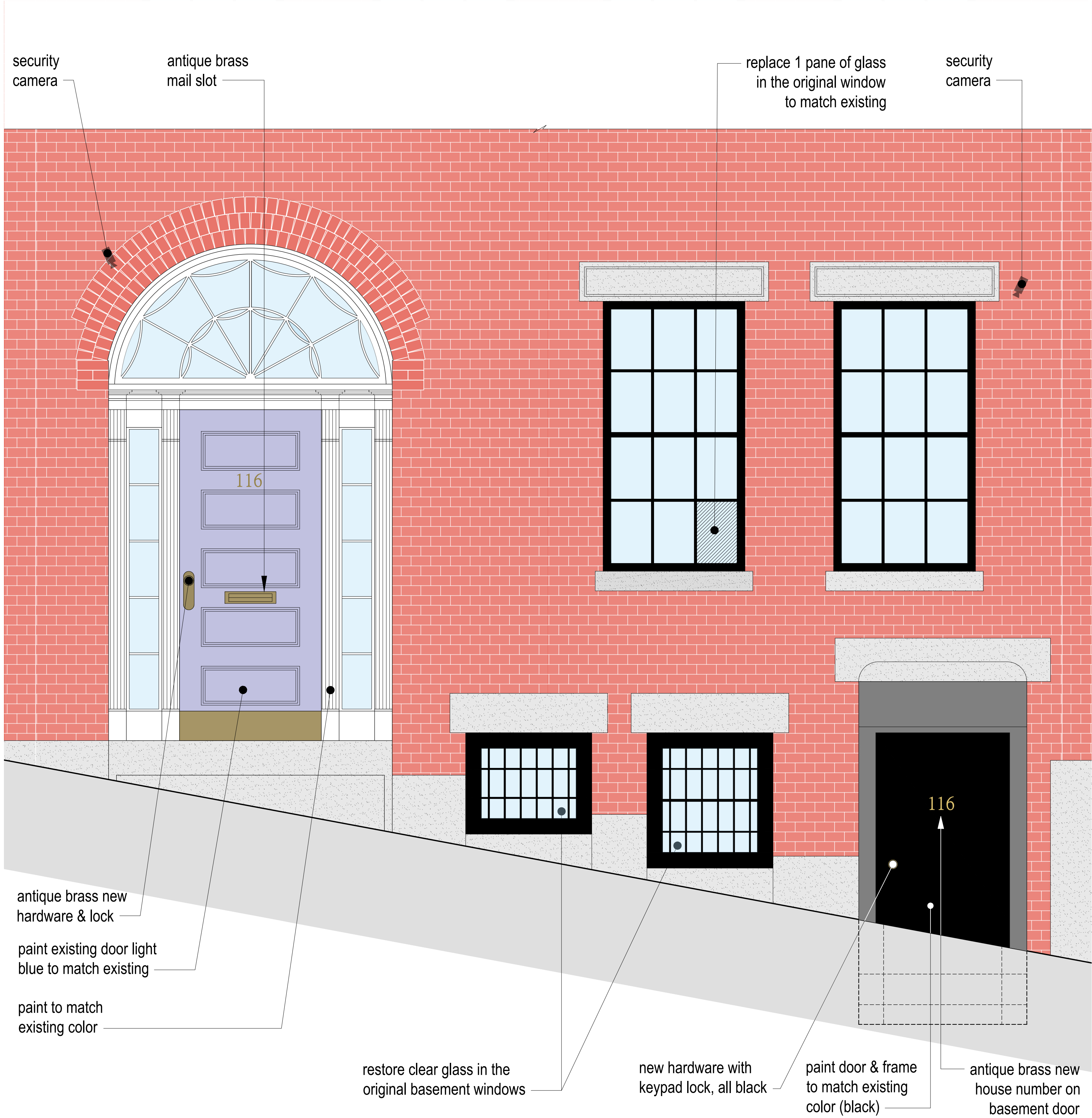
Drawn By  
TGAS

Drawing Number



1 Front elevation: proposed changes

1/4" = 1'-0"



2 Front elevation: proposed changes

3/4" = 1'-0"



820  
SERIES



## Summary

This low-profile turret IP camera features 8MP resolution for 4K viewing. Featuring IR night viewing that eliminates over-exposure in dim settings and evenly illuminates the subject. With OvrC, on-site or remote configuration is a breeze, no longer requiring you to tediously navigate each camera's local UI. Adjust image settings in real-time, setup recordings, and more all via OvrC. Control System integration is always top of mind, and this camera is packed with features for Control4 along with many other popular control systems.

## Features

- AI-filtered events
- H.265+/H.265/H.264+/H.264/MJPEG coding
- Max.resolution: 8MP (3840 × 2160)
- ICR auto switch, true day/night vision
- 3D DNR, true WDR, HLC, BLC and ROI coding
- 20-30m IR night view distance
- 1CH audio input; 1CH built-in MIC
- Built-in micro SD card slot; up to 256GB
- DC12V/PoE power supply
- Support four streams
- IP67 ingress protection
- Remote monitoring support via Luma View app

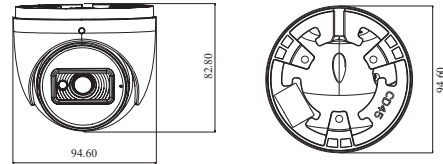
## Mounting Accessories (optional)



Junction Box LUM-A20-JB-FX-BT Low Profile Wall Mount Bracket LUM-A20-WMB-TD Wall Mount Bracket LUM-A20-WMB-VF-TD Ceiling Mount LUM-A20-CM-FX-TD

## Dimensions

Unit: mm



## Specifications

Product	LUM-820-IP-TF
Resolution	3840 x 2160
Shutter Speed	1s - 1/1000000s
Min. Illumination	0.02 lux, AGC ON; 0 lux with IR
Lens	2.8mm
Aperture	F1.6
Field of View	Horizontal FoV: 106.7°/Vertical FoV: 56.9°/Diagonal FoV: 127.9°
IR Range	20 - 30m
Wide Dynamic Range	120dB
BLC	Yes
HLC	Yes
Digital Noise Reduction	Yes
Angle Adjustment	Pan: 0° - 360°/Tilt: 0° - 75°/Rotation: 0° - 360°
Video Compression	H.265+/H.265/H.264+/H.264
Main Stream	H.265(+): 3840 x 2160 30fps H.264(+): 3840 x 2160 30fps H.265(+): 3072 x 2048 30fps H.264(+): 3072 x 2048 30fps H.265(+): 2592 x 1944 30fps H.264(+): 2592 x 1944 30fps H.265(+): 2592 x 1520 30fps H.264(+): 2592 x 1520 30fps H.265(+): 2560 x 1440 30fps H.264(+): 2560 x 1440 30fps H.265(+): 2304 x 1296 30fps H.264(+): 2304 x 1296 30fps H.265(+): 1920 x 1080 30fps H.264(+): 1920 x 1080 30fps H.265(+): 1280 x 720 30fps H.264(+): 1280 x 720 30fps
Sub & Third Stream	H.264: 704 x 480 (30fps)
Fourth Stream	H.265: 1920 x 1080 30fps H.264: 1920 x 1080 30fps MJPEG: 1920 x 1080 30fps H.265: 1280 x 720 30fps H.264: 1280 x 720 30fps MJPEG: 1280 x 720 30fps
Audio & Alarm	Built-in microphone/Audio input
Storage	Built-in micro SD card slot/Up to 256GB
Reset Button	Yes
ONVIF Comformance NDAA Compliant	Yes/Yes
Basic Event	Motion Detection/SD Card Full/SD Card Error
AI Event	Line Crossing/Region Intrusion/Region Entrance/Region Exit/Target Counting
AI Category	Human/Motor Vehicle/Non-motor Vehicle
Protection	IP67
Power Supply	DC12V/PoE
CVBS Output	No
Power Consumption	< 9W
Operating Temperature & Humidity	-22 F - 140F (-30 C - 60C) Less than 95% (non-condensing)
Dimensions & Weight	94.6mm x 82.8mm, 0.46KG (1.01lbs)
Certifications	ETL Listed, CE, FCC





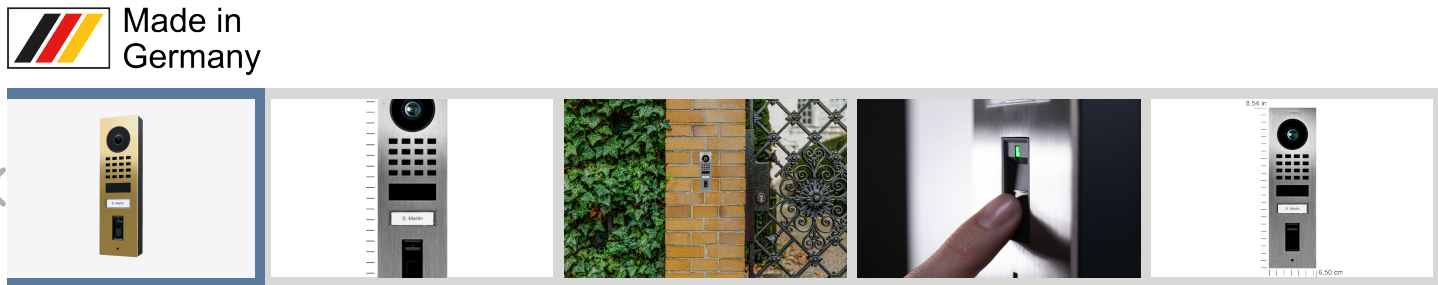












Features

Materials and colors

## HIGHLIGHTS AND DETAILS

- Open API

Local interface for integration with third-party systems and SIP
- Video and audio call

On smartphones, tablets (iOS, Android), IP and landline phones (SIP)
- Smart Transmission Mode (STM)

Real-time audio / video communication, optimized for mobile devices via WiFi, 3G, 4G, 5G
- Smart Home & NVR compatible

Control4, Loxone, Crestron, Synology, AVM FRITZ!Fon, URC, QNAP, RTI, ELAN, Fibaro, Bang & Olufsen and others
- Microphone

Intercom with clear voice transmission
- Automatic door buzzer

For use in medical offices and office environments
- Free visitor history

Store still images for free, optional video recording available
- Individual action schedules, e.g.:

Switch relay 1 for automatic door release Mon-Fri from 9 am until 4 pm when the call button is pressed  
4D motion sensor switches on external lamp between 9 pm and 6 am
- Geofencing

Automatic door and gate opening when returning home
- Night vision

With Infrared LEDs
- HDTV Video

Ultra wide-angle, hemispheric lens, 180°
- Light sensor

For night vision mode
- One freely configurable bistable latching relay

Control one door or one gate via App  
Status configurable via App: temporary or permanent circuit
- Easy self-install

Quick installation of the intercom via QR code scan
- Call button

With backlit nameplate
- Motion sensor with 4D technology

Distance up to 6 m (19.7 ft) adjustable via App (interval: 1 m/ 3.3 ft)
- Noise reduction and echo cancellation (AEC, ANR)
- Easy connection of the intercom to the network

Connection via a network cable or bell wire via 2-Wire Ethernet PoE Converter “DooBird A1071” (PoE, network data)
- WiFi enabled


Works within a WiFi network, no LAN cable needed
- Fingerprint reader

Supported number of fingerprints: 50  
Status LED (RGB)  
Touch sensor
- Bluetooth Low Energy (BLE)


For access control, compatible external sensors and smart locks

## MATERIALS AND COLORS


Find out more about our high-quality materials and coatings → [to the overview](#)




Stainless steel V2A, brushed



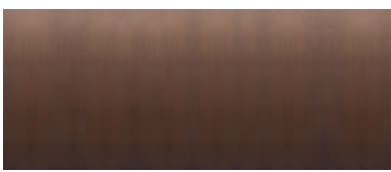
Stainless steel V4A (salt-water and grinding dust resistant), brushed




Bronze-finish as PVD coating, stainless steel, brushed




Real burnished brass




Architectural bronze



Gold-finish as PVD coating, stainless steel, brushed



Chrome-finish as PVD coating, stainless steel V4A, high-gloss polished



Brass-finish as PVD coating, stainless steel V4A, high-gloss polished

RAL 1001, Beige

RAL 1003, Signal yellow

RAL 1004, Golden yellow

RAL 1016, Sulfur yellow

RAL 1017, Saffron yellow

RAL 1037, Sun yellow

RAL 3000, Flame red

RAL 3014, Antique pink

RAL 3028, Pure red

RAL 4004, Claret violet

RAL 6019, Pastel green

RAL 6027, Light green

RAL 7016, Anthracite grey

RAL 9002, Grey white

RAL 9006, White aluminium

RAL 9010, Pure white

Graphite black (Polar Raven)

RAL 9016, Traffic white

## PRODUCT DOWNLOADS & LINKS

- ↓


Datasheet (PDF)
- ↓

Product Manual (PDF)
- ↓


Warning and safety information (PDF)
- ↓

Download Tender Document (DOC)
- App User Manual
- Support


## OFTEN ORDERED AS WELL




Angle corner wall-mount adapter A8002



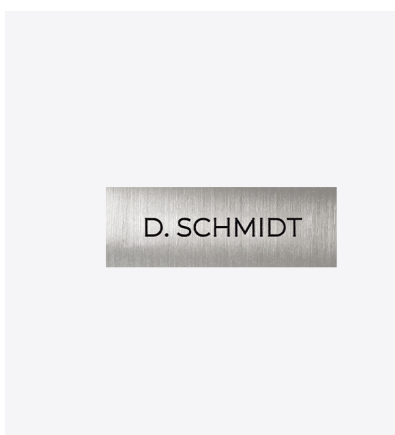
IP Video Indoor Station A1101 White Edition




IP Video Indoor Station A1101 Black Edition



IP I/O Door Controller A1081



D11x Nameplate for call button, individual engraving



Internet Firewall A1051

•

•

Support

Contact us

API

Multi-Tenant

News

Press & Media

Newsletter

About us

Careers

Sustainability

Imprint

Privacy Policy

US Biometric Policy

California Statement “Limit use of sensitive data”Do not sell my data statement

US Privacy note

Part of ASSA ABLOY

f

X

e

Instagram

YouTube

in

Pin