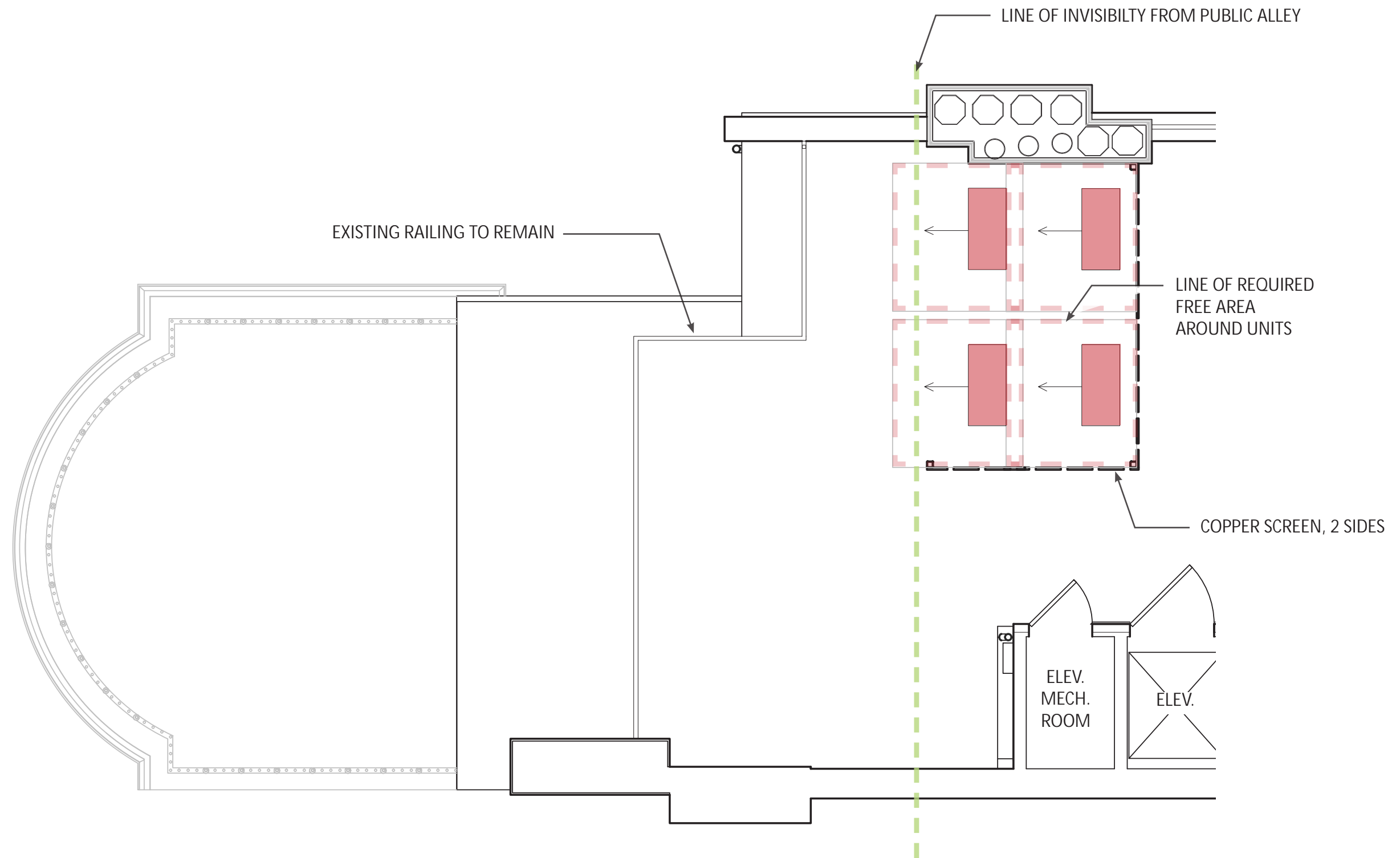




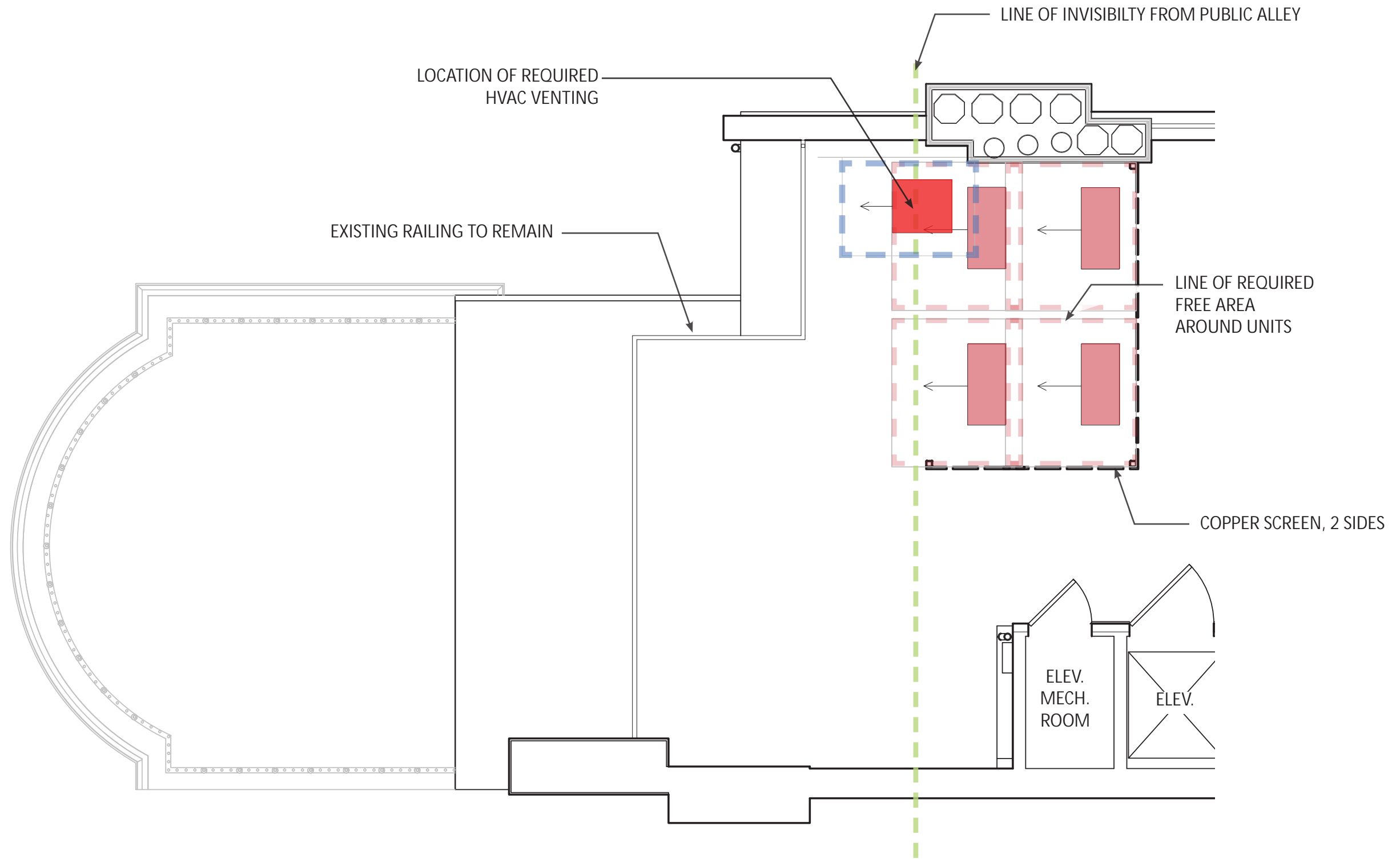
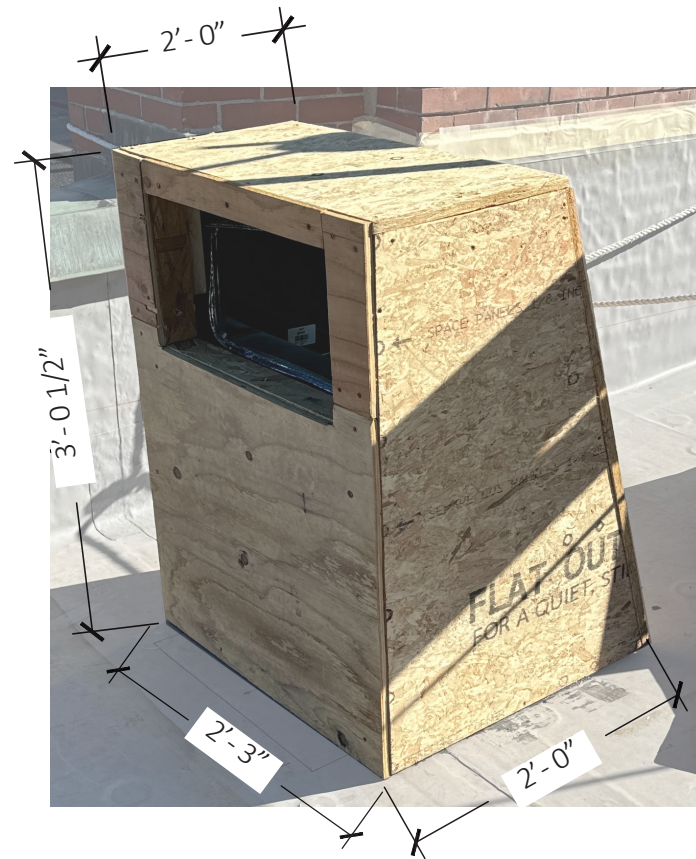
EXISTING CONDITIONS PHOTOS



PREVIOUSLY APPROVED HEAT PUMP
CONFIGURATION

15 MAY 2025
131 COMMONWEALTH AVE

CATHERINE TRUMAN
ARCHITECTURE & INTERIORS



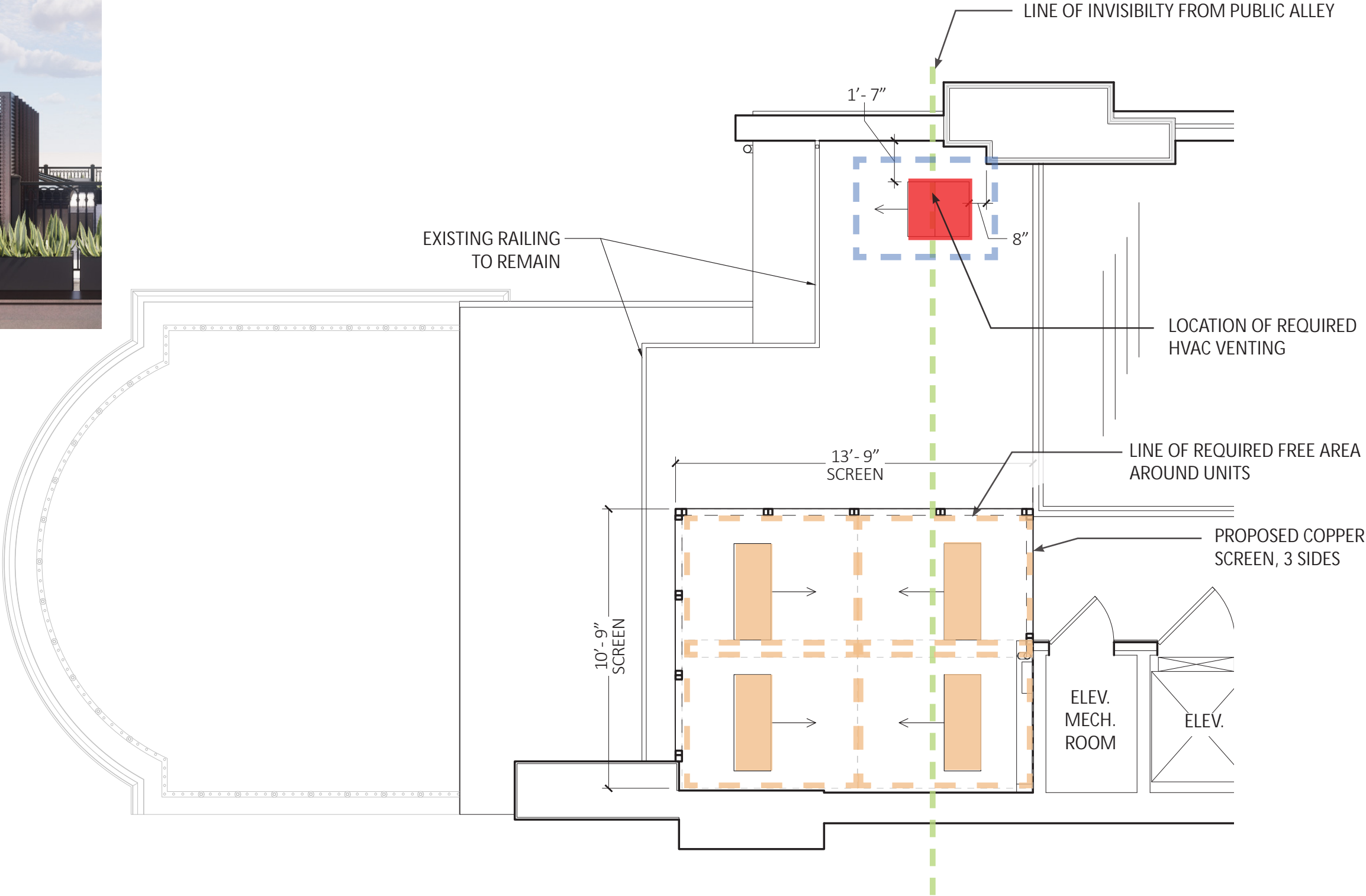
PREVIOUSLY APPROVED HEAT PUMP
CONFIGURATION WITH REQUIRED HVAC VENT

15 MAY 2025
131 COMMONWEALTH AVE

CATHERINE TRUMAN
ARCHITECTURE & INTERIORS



SIMILAR TO APPROVED SCREEN
AT 161 COMMONWEALTH AVE.

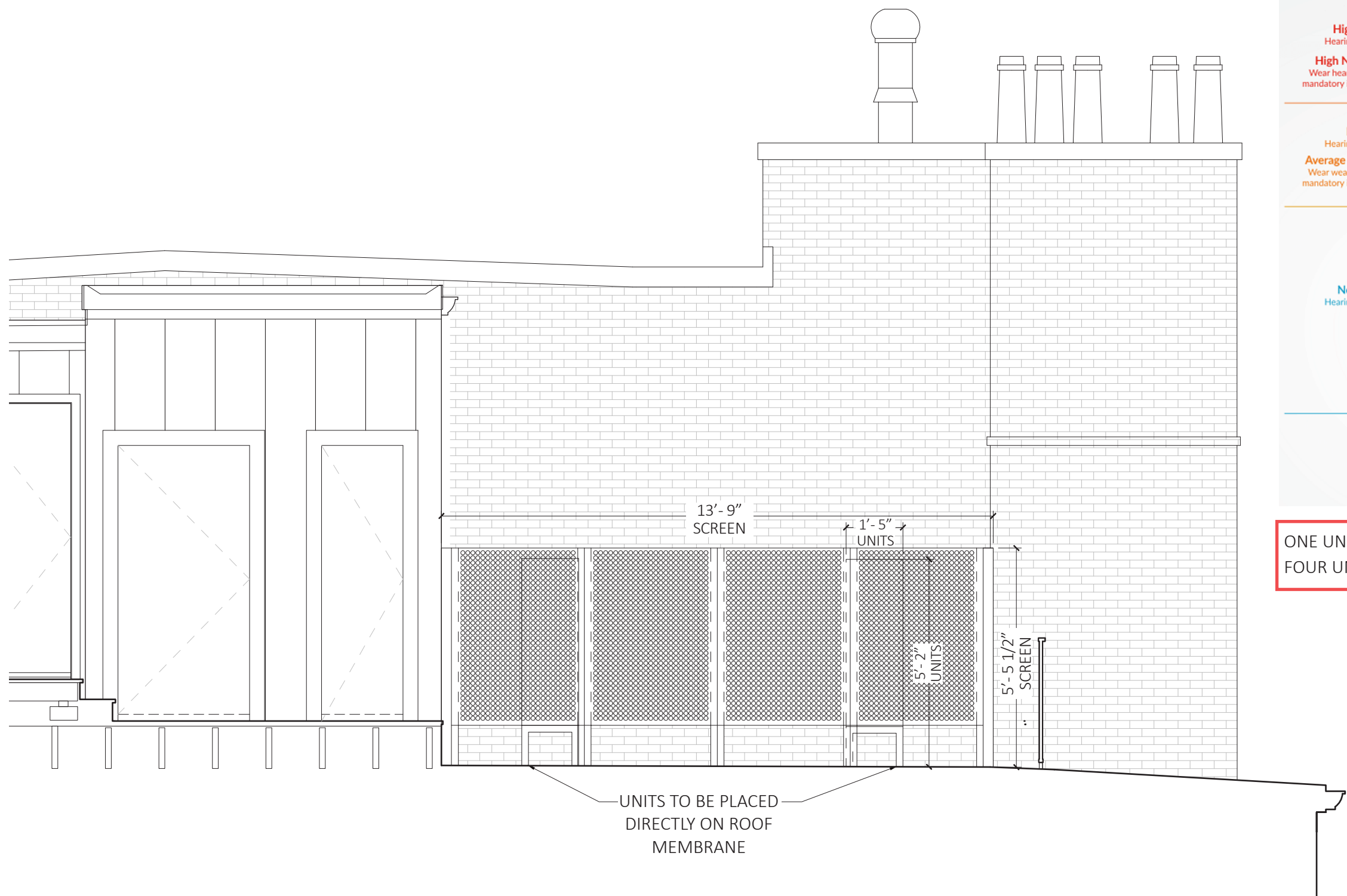


4 UNITS WITHIN COPPER SCREEN
MAINTAINING VENTILATION CLEARANCE REQUIREMENTS

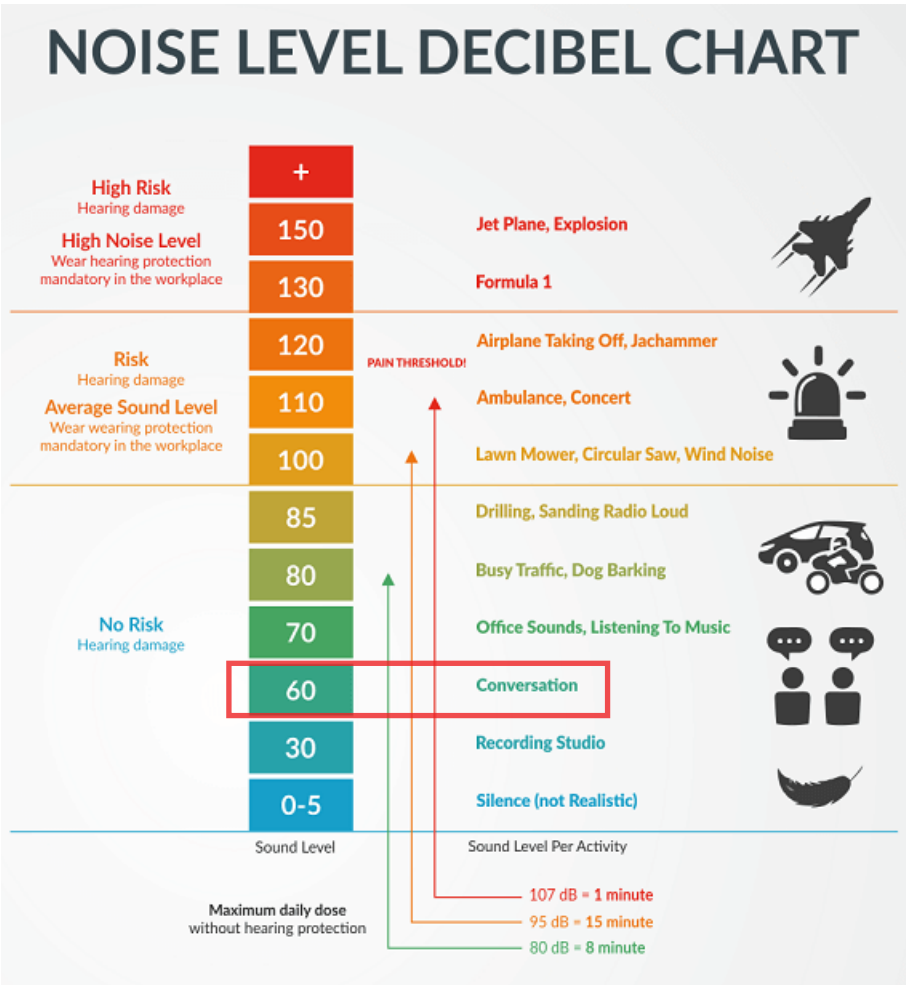
PROPOSED HEAT PUMP CONFIGURATION

15 MAY 2025
131 COMMONWEALTH AVE

CATHERINE TRUMAN
ARCHITECTURE & INTERIORS



ELEVATION LOOKING WEST
TOWARD 133 COMMONWEALTH AVE

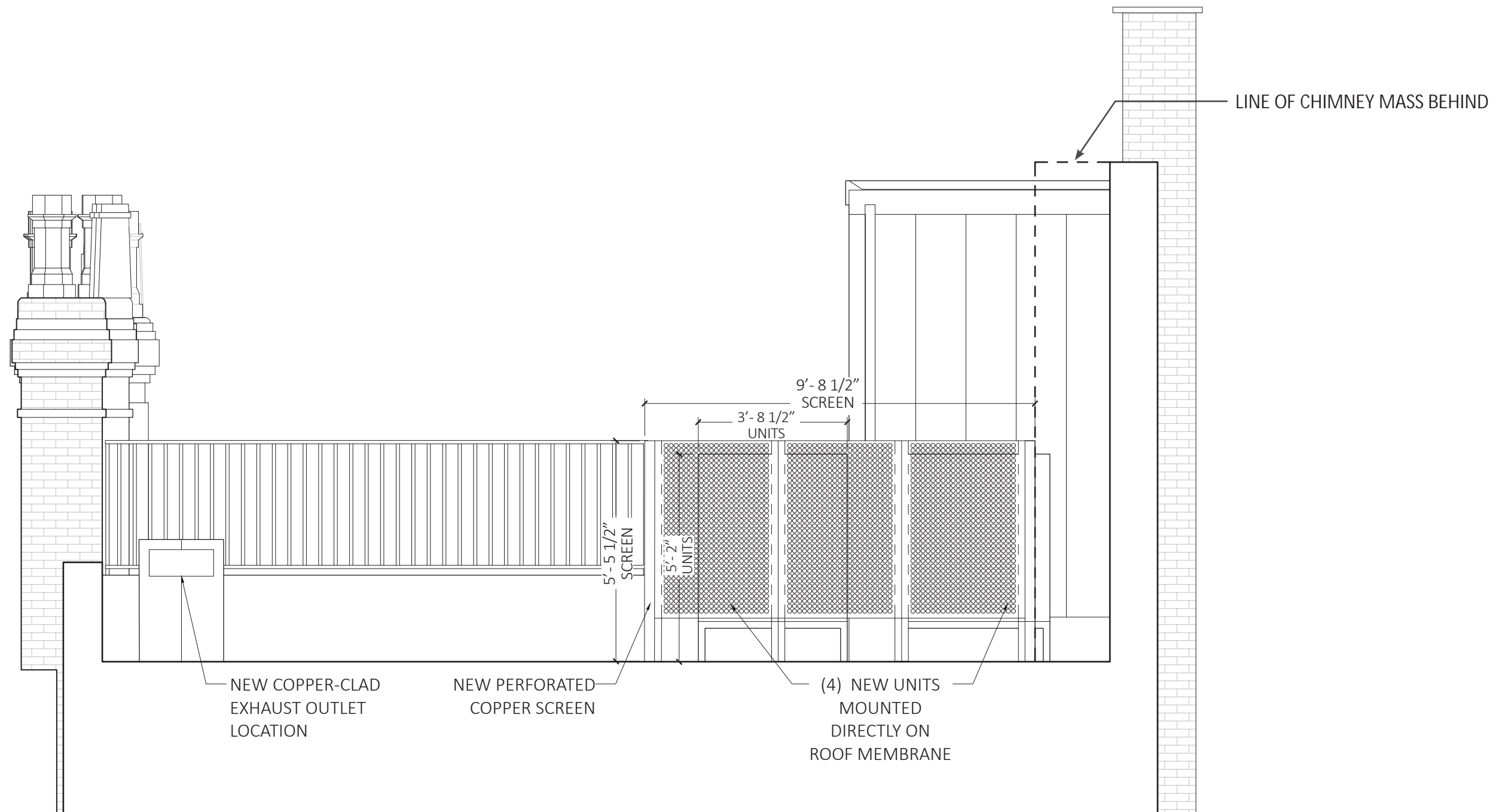


ONE UNIT: 52 dB(A)
FOUR UNITS: APPROX. 58 dB(A)

PROPOSED HEAT PUMP CONFIGURATION

15 MAY 2025
131 COMMONWEALTH AVE

CATHERINE TRUMAN
ARCHITECTURE & INTERIORS



ELEVATION LOOKING SOUTH
TOWARD COMMONWEALTH AVE.

PROPOSED HEAT PUMP CONFIGURATION

15 MAY 2025
131 COMMONWEALTH AVE

CATHERINE TRUMAN
ARCHITECTURE & INTERIORS

VIEWPORT KEY

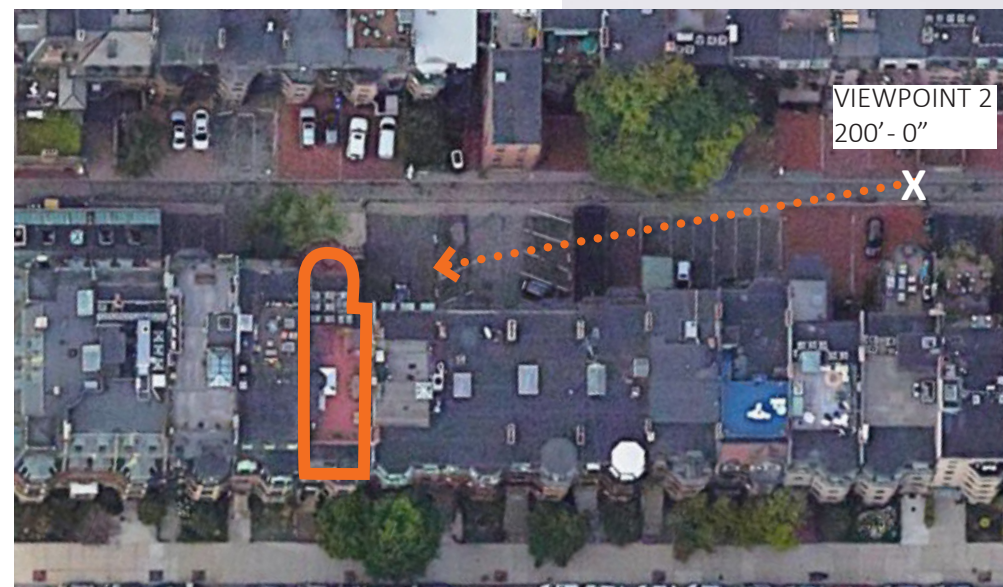


PROPOSED HEAT PUMP CONFIGURATION
VIEWPOINT 1 - NOT VISIBLE

15 MAY 2025
131 COMMONWEALTH AVE

CATHERINE TRUMAN
ARCHITECTURE & INTERIORS

VIEWPORT KEY



PROPOSED HEAT PUMP CONFIGURATION
VIEWPOINT 2

15 MAY 2025
131 COMMONWEALTH AVE

CATHERINE TRUMAN
ARCHITECTURE & INTERIORS