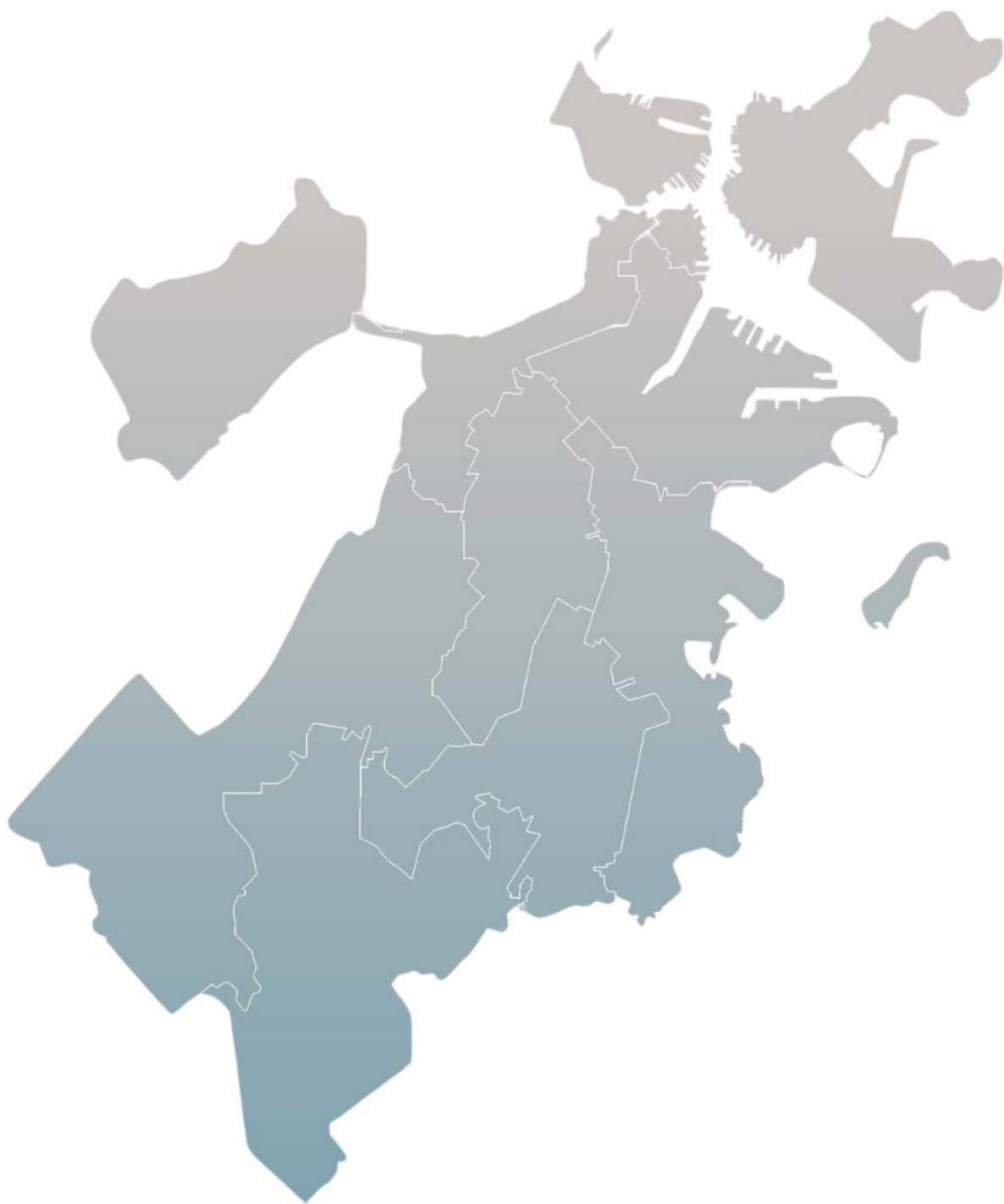


Boston Board of Health

January 22, 2025

AGENDA

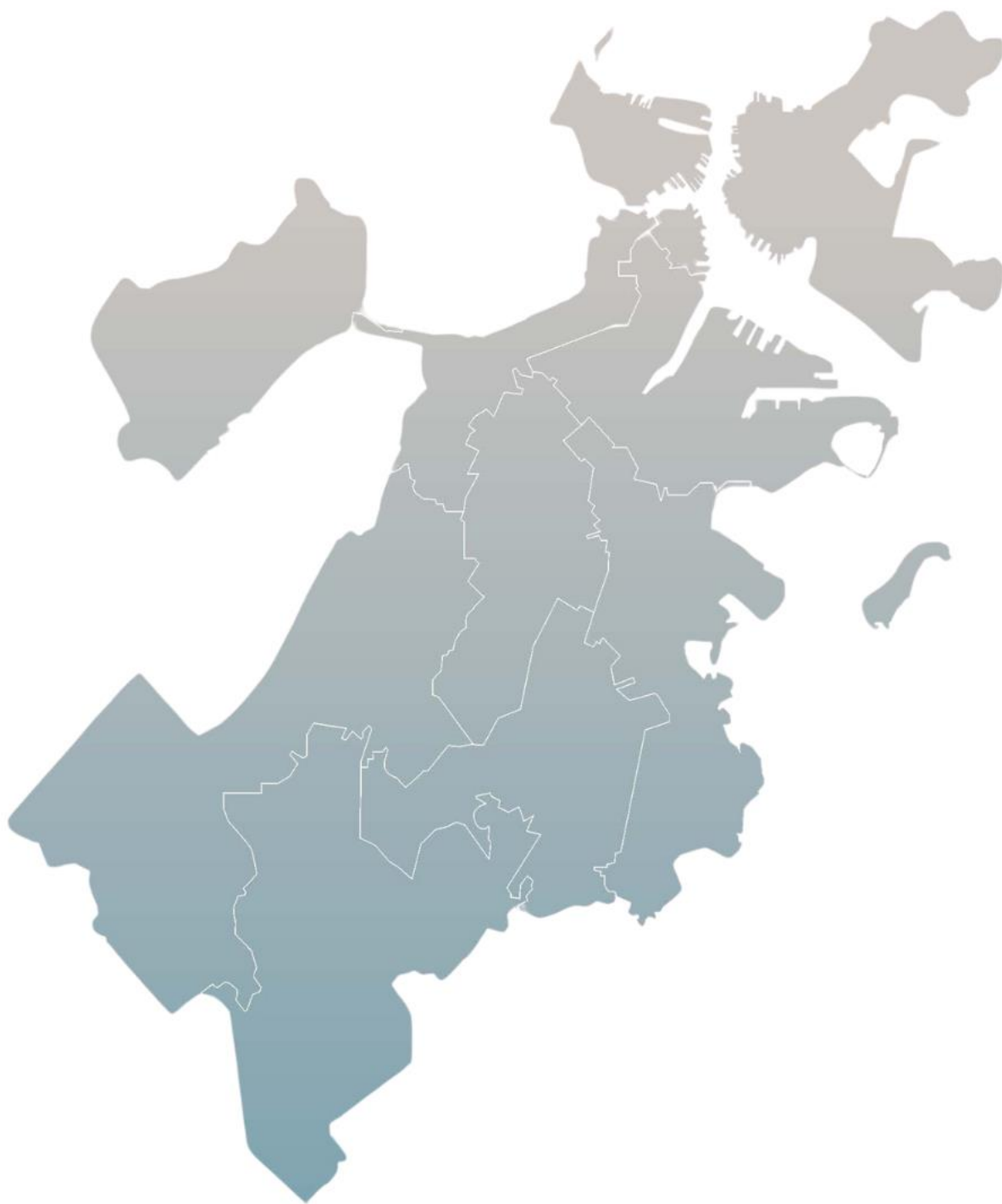
1. Chairperson's Remarks
2. Executive Office Report
3. Acceptance and Approval of Minutes
4. FY26 Budget Process Overview
5. Live Long and Well Population Health Equity Agenda Updates
6. Spotlight: Office of Violence Prevention
7. Adjourn



Commissioner's Report

January 22, 2025





APPROVAL OF MINUTES

November 13th, 2024 Meeting

By roll call vote





FY26 BUDGET PROCESS OVERVIEW

Tim Harrington, Director of Administration and Finance

Chris Valdez, Budget Director



FY26 Budget Timeline

1/13/25	FY26 Initial draft maintenance budget submitted to the City, proposed new investments as well as any new capital requests
1/22/25	January Board Meeting with Budget Process Update
February 2025	FY26 external funds budgets due to the City
January – March 2025	Further meetings with OBM and Mayor's Office around potential new budget proposals and revisions to draft FY26 maintenance budget
3/12/25	Board meeting to review and vote to submit FY26 maintenance budget to the Mayor for review and approval
May 2025	City Council hearing
6/11/25	Final Board vote to approve FY26 budget

FY26 Budget

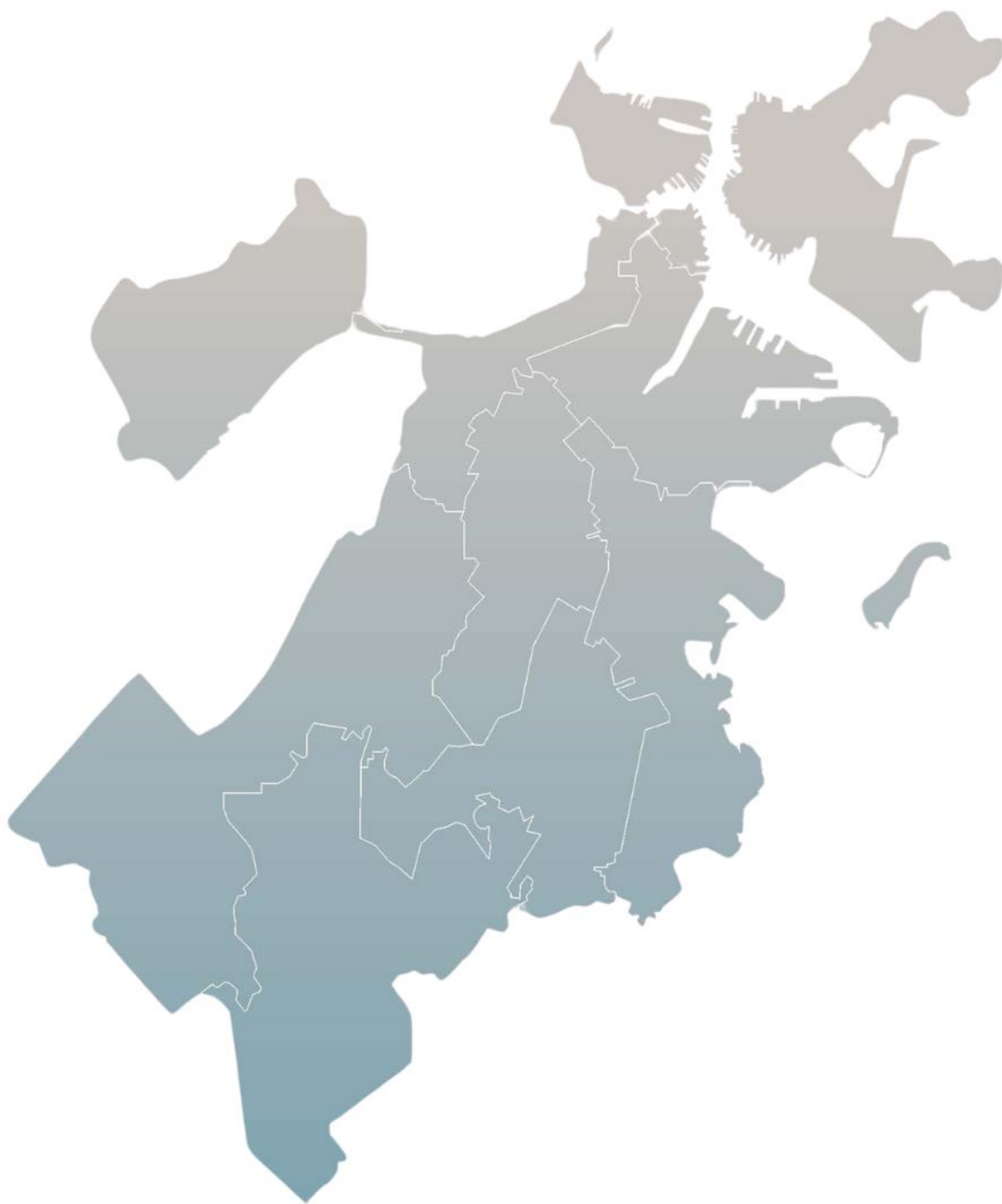
- Proposed FY26 total maintenance budget is \$145,766,023. This preliminary figure is a 4.1% increase over FY25's adopted budget amount of \$140,078,762.
- Significant increases are mainly due to settled collective bargaining agreements and maintenance asks for shelter expenses.
- The draft budget will be shared with the Board once complete and will be covered in more detail at the March Board meeting.

Draft New Investment Proposals

- New resource requests have not been finalized, but they will include:
 - Investments in alignment with BPHC's Strategic Priorities and Live Long and Well Agenda
 - Administrative infrastructure improvements
 - Select expansions of existing services
- We will provide additional updates regarding our new investment requests at the next Board meeting



Questions?



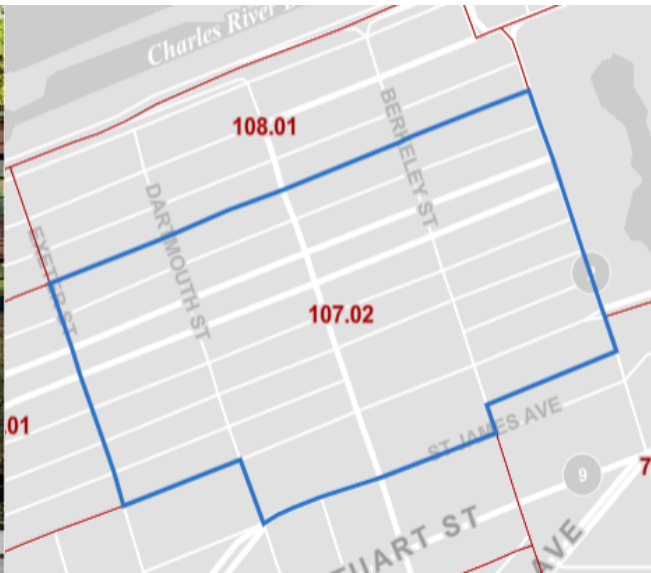
LIVE LONG & WELL

Boston's Population Health Equity
Agenda to Improve Life Expectancy
and Advance Health Equity



Life Expectancy in Boston by Census Tract 2015-2021

A Census Tract in Back Bay



92 years

Median Income: \$141,250

College Degree: 91%

White: 82%

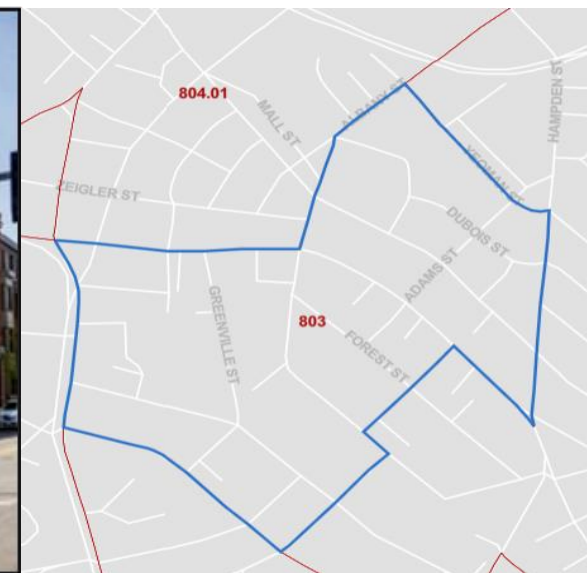
Black/African-American: 1%

Latinx: 8%

23 years



A Census Tract in Roxbury



69 years

Median Income: \$41,211

College Degree: 44%

White: 13%

Black/African-American: 50%

Latinx: 32%

Leading Causes of Premature Mortality Among Black Individuals, 2021-2023

	Top 3 Leading Causes of Premature Death
1	Unintentional Drug Overdose
2	Cancer
3	Heart Disease

Live Long and Well

Live Long and Well is a citywide initiative focused on reducing gaps in life expectancy in Boston and creating a healthier city for all.

Focus Areas:

Leading Causes of Premature Mortality

- Drug Overdoses
- Cardiometabolic Diseases
- Preventable Cancers

Health of Bostonians Across Lifespan

- Mental Health
- Infant and Maternal Health
- Older Adult Health

Goals of Live Long and Well

Long Term Goal:

To close the life expectancy gap citywide by 2035.

Short- & Mid-Term Goals:

1. Drive catalytic financial investments in health equity.
2. Collaboration with other City departments and partners.
3. Guide our policy agenda.
4. Inform internal strategy around new programs and investment.

A Live Long and Well Partnership:

Investing in Innovations Bolstering Economic Mobility and Healthy Longevity in Boston

GRANT OUTCOMES

Seeking meaningful change to address root causes of poor health outcomes.



Improved health:
individual and/or community financial factors that affect health.



Stronger ecosystems:
cross-sectoral partnerships to promote local solutions.



Systems change:
political will and community power for policies on economic equity.

www.atriusfoundation.org/live-long



CITY of **BOSTON**



- **Up to \$5 Million** Funding Opportunity for initial cycle
- Support place-based efforts to mobilize innovative, community-driven collaborations to address the factors that contribute to cardiometabolic health inequities
- Aiming to enhance economic mobility and financial security in the three communities disproportionately impacted by a higher burden of cardiometabolic disease – Dorchester, Roxbury, and Mattapan
- **Application deadline March 12th**





SPOTLIGHT: OFFICE OF VIOLENCE PREVENTION

Mark Scott, Interim Director, Office of Violence Prevention

Sukia Akiba, Director, Violence Intervention and Prevention Initiative

Donald Osgood, Director, Community Healing and Response Network

Roy Martin, Director, Life Course Health Unit

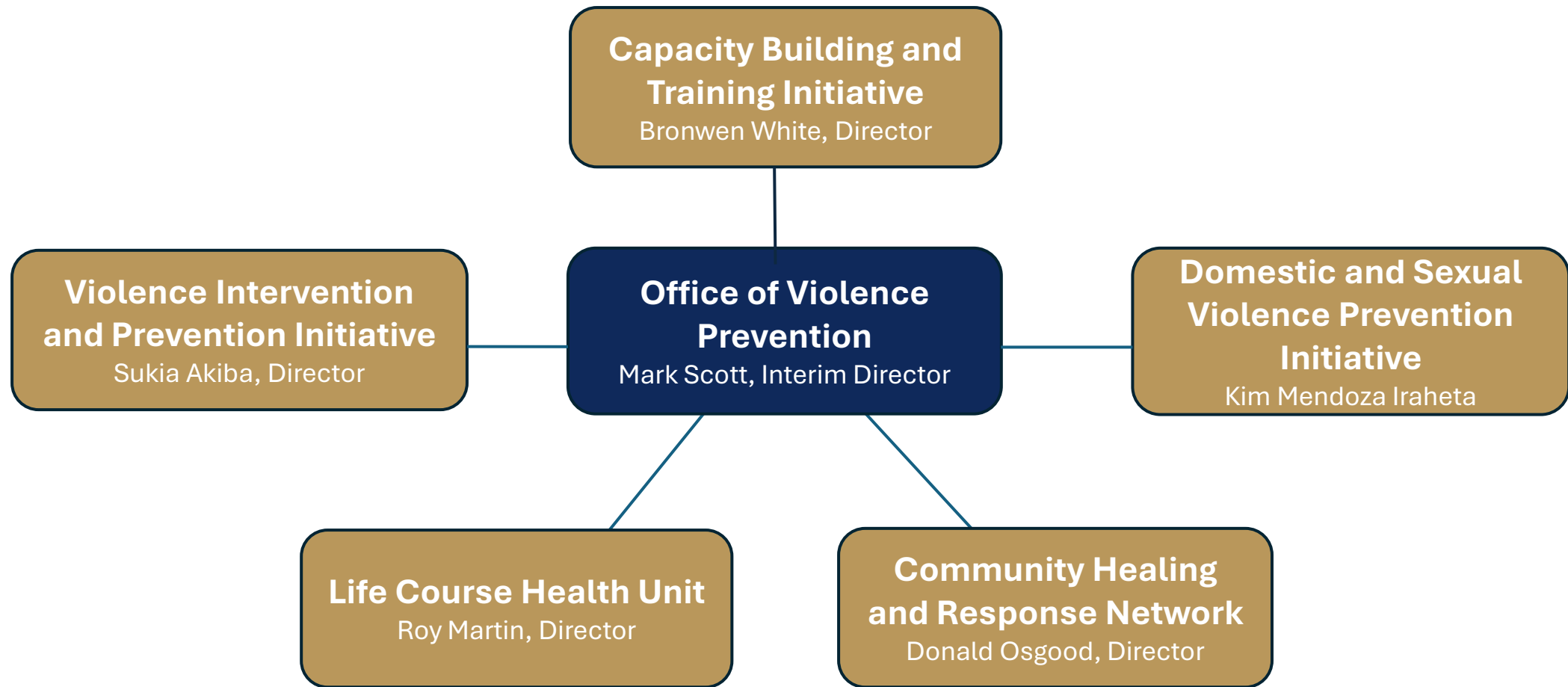
Kim Mendoza Iraheta, Director, Domestic and Sexual Violence Prevention Initiative

Bronwen White, Director, Capacity Building and Training Initiative



Boston Public Health Commission

Office of Violence Prevention



Office of Violence Prevention

- **VIP** works in 5 neighborhoods with five community-based organizations to prevent community violence.
- **CHRN** responds to community violence in a manner to aid healing.
- **LCU** works directly with members of the population most impacted / engaged in community violence.
- **CBTI** trains widely on trauma informed care, building partner organizations' capacity, and organizes learning communities.
- The new **Domestic and Sexual Violence Prevention Initiative** will advance Boston's effort to prevention gender-based violence. The Initiative works with, builds on, and expands to work of the Family Justice Center (FJC).
- OVP works closely with the Mayor's Office of Community Safety on the ***Plan to End Violence***.

Violence Intervention and Prevention Initiative Partners

- Project R.I.G.H.T Inc (*Grove Hall*)
- The Mattapan Teen Center (*Mattapan*)
- Teen Empowerment (*Roxbury, Dorchester, Mattapan*)
- Madison Park Development Corp. (*Roxbury – Nubian Square*)
- Boston Project Ministries (*Dorchester – Norfolk Triangle*)

Violence Intervention and Prevention Initiative

Transformational Prison Project

Encourages healing and accountability by facilitating restorative dialogue between those responsible for harm and those who have experienced harm.

We Are Better Together

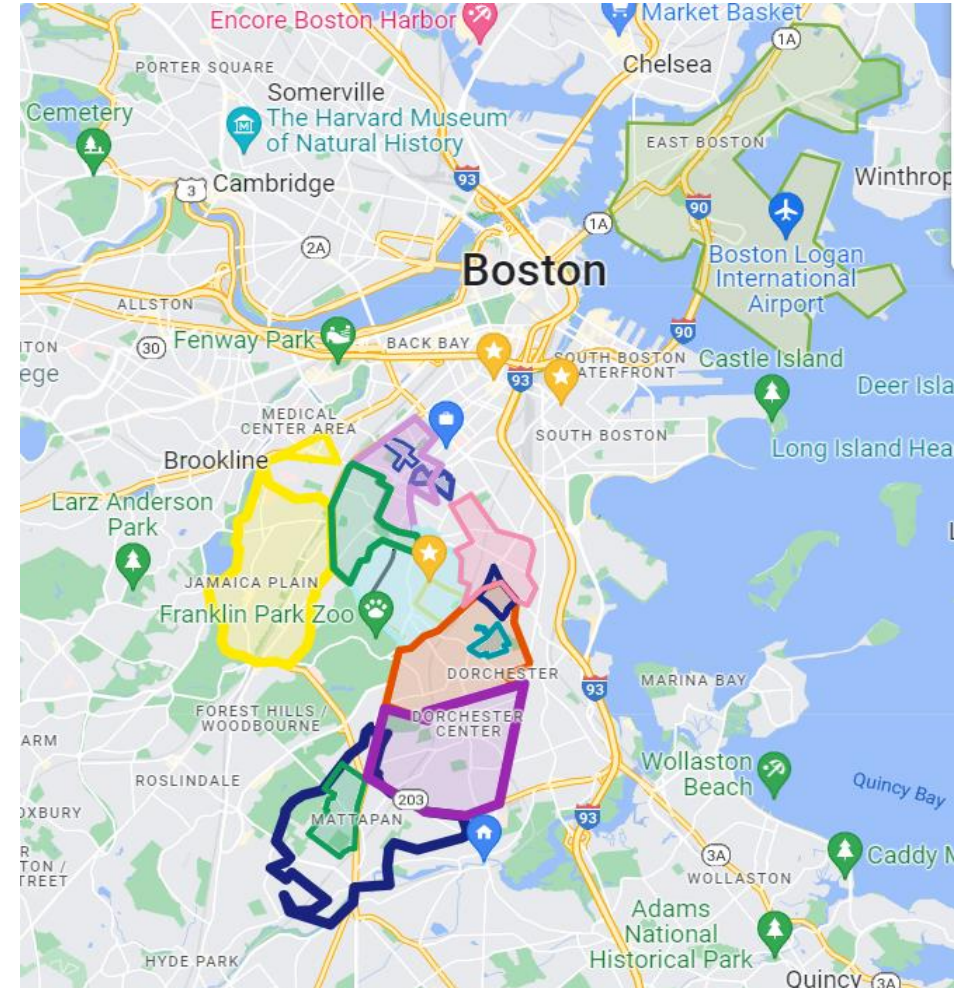
Connects and heals women and girls affected by homicide and incarceration to prevent the cycles of violence and Victimization.

Community Healing Response Network - Roles

Healing Response Team	BMC & BWH	9 Neighborhood Teams	Louis D. Brown Peace Institute	BPHC
<p>Staff the 24/7 Support Line</p> <p>Early interventions, including at the scene of an incident, funeral, vigil and other events</p> <p>Coping and other small support groups</p>	<p>Provide direct services to impacted individuals and families</p> <p>Refer to BTR, NTT, and/or LDBPI when necessary</p>	<p>Outreach and engagement Assess/Canvass neighborhood for impact</p> <p>Connect with residents</p> <p>Short-Term Care Crisis intervention Case Management</p> <p>Long-Term Care Provide long term behavioral health services</p>	<p>Support survivors of homicides</p> <p>Case Management</p> <p>Refer families to Boston Trauma Response and/or NTT for funeral service support</p>	<p>Fund Network</p> <p>Ensure Fidelity to Network Model</p> <p>Send incident notifications</p> <p>Incident management</p> <p>Training and Technical Assistance</p> <p>Facilitate Network leadership and monthly meeting</p>

Community Healing Response Network Neighborhoods

- ❑ Jamaica Plain Community Healing Response Team
- ❑ Bowdoin-Geneva Community Healing Response Team
- ❑ Codman Square Community Healing Response Team
- ❑ East Boston Community Healing Response Team
- ❑ Greater Nubian Square Community Healing Response Teams/aka Roxbury Team
- ❑ Grove Hall Community Healing Response Team
- ❑ Humboldt/Academy Homes Community Healing Response Team
- ❑ Mattapan Community Healing Response Team
- ❑ Upham's Corner Community Healing Response Team
- ❑ BPHC Citywide Healing Response Team



Life Course Health Unit

“Life-Course Health Unit” (The LCU)

Safe and Successful Youth Initiative (SSYI), Mens Health Initiative (MHI) & Promoting Potential Boston (P2 Boston)

P2 Boston is an adolescent violence reduction strategy to address gaps in services for **“at-risk” individuals 16 yrs of age & under...**

SSYI is youth violence reduction strategy to address gaps in services for **“proven risk” individuals ages 17-24**

MHI is an adult violence reduction strategy to address gaps in service for **“proven risk” individuals 25 yrs of age and over.**

<https://www.air.org/project/safe-and-successful-youth-initiative-massachusetts-ssyi>

https://www.tbf.org/-/media/indicators/bostonindicators-reports/report-files/criminaljusticereform_report_12224.pdf

<https://crimesolutions.ojp.gov/ratedprograms/safeand-successful-youth-initiative-ssyi-massachusetts>

<https://www.ncja.org/crimeandjusticenews/boston-down-to-22-homicides-this-year-a-record-low#:~:text=Boston%20may%20ring%20in%20the,shootings%20by%2020%25%20by%202026>

<https://malegislature.gov/Bills/193/SD3034.pdf>

<https://www.youtube.com/watch?v=pmHbcfUeXiA>

Domestic and Sexual Violence Prevention Initiative

Draft Mission of DSVPI

To create an inclusive and equitable environment that fosters a collective response to and prevention of gender-based violence. Our goal is to support all survivors—especially BIPOC, LGBTQ+, women, girls, young people, immigrants, and those who are incarcerated or recently released—in their healing journey while challenging the systemic inequities that perpetuate violence.

Draft Vision of DSVPI

A Boston where all individuals, particularly those made most vulnerable by systemic inequities, experience safety, support, and empowerment, with the culturally responsive and linguistically accessible tools and resources they need to heal from gender-based violence and thrive. We envision a Boston that recognizes the root causes of GBV and takes collective action to prevent it.

Domestic and Sexual Violence Prevention Initiative

Draft Core Objectives:

1. **Establish** a Comprehensive and linguistically accessible GBV Provider Landscape Assessment to ensure City priorities are data and survivor driven and inform Provider Convenings
2. **Implement** Survivor-Centered Resident Feedback Mechanisms and Convenings
3. **Strengthen** Trauma-Informed and Equitable training, education and capacity building activities in Community Based Organizations across sectors such as Early Education, Housing, Economic Stability, Returning Citizen, Youth Serving, and Immigration Programs to better support survivors made most vulnerable by GBV
4. **Advocate** for Policy Changes Supporting Economic Stability, and Housing Options for Survivors
5. **Advocate** for Workforce Wellness and Resilience Programs for GBV Staff and Partners
6. **Establish** a comprehensive and collaborative approach to gender-based violence (GBV) within the City that recognizes and addresses the interconnectedness of various forms of violence

❖ **Data-Driven Approach**

❖ **Collaborative**

❖ **Trauma-Informed and Equitable**

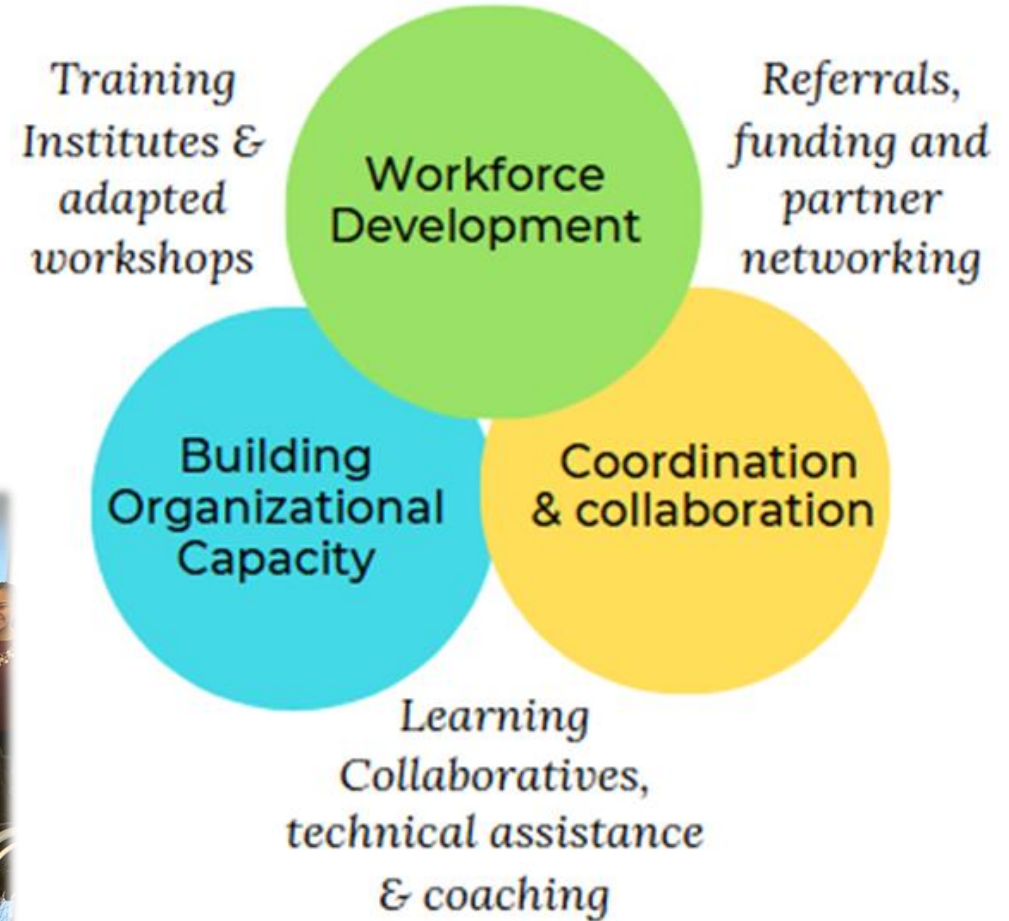
❖ **Systems Change**

❖ **Survivor-Led**

❖ **Culturally and Gender Affirming**

Capacity Building and Training Initiative

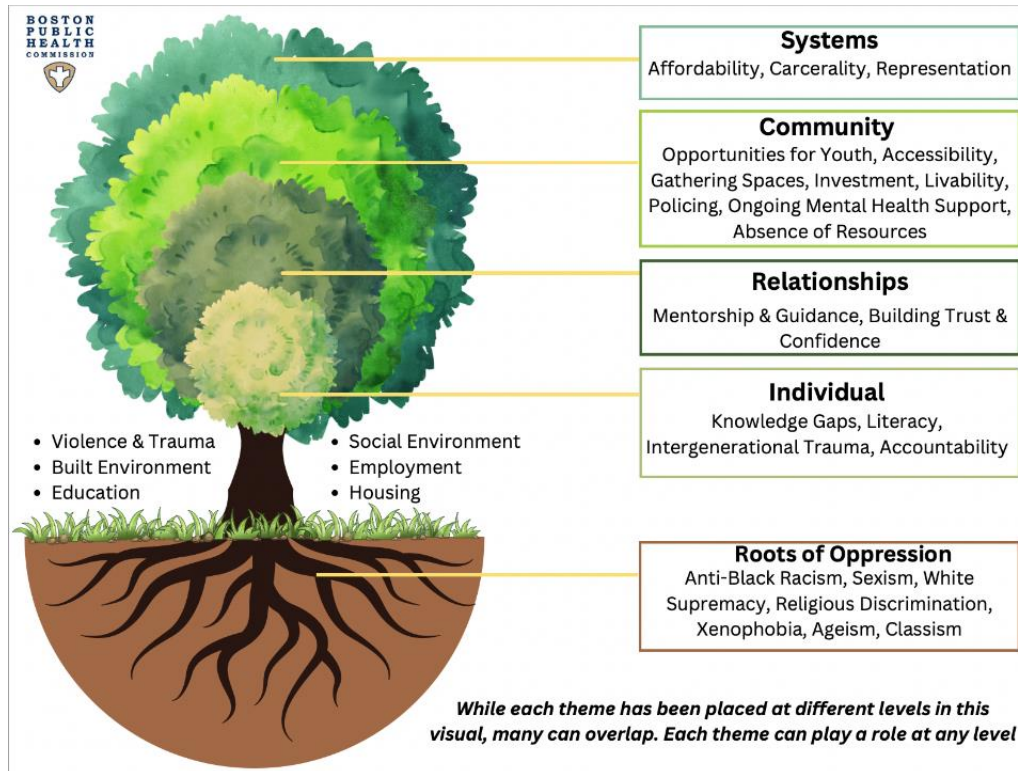
- Focus: Service providers and organizations serving children, youth, adults and families
- Trauma-informed & equitable approaches, workforce well-being
- Since 2013, trained 8,000 providers and partnered with 60+ organizations
- Funded by three Federal grants, Boston Children's Hospital and the City of Boston



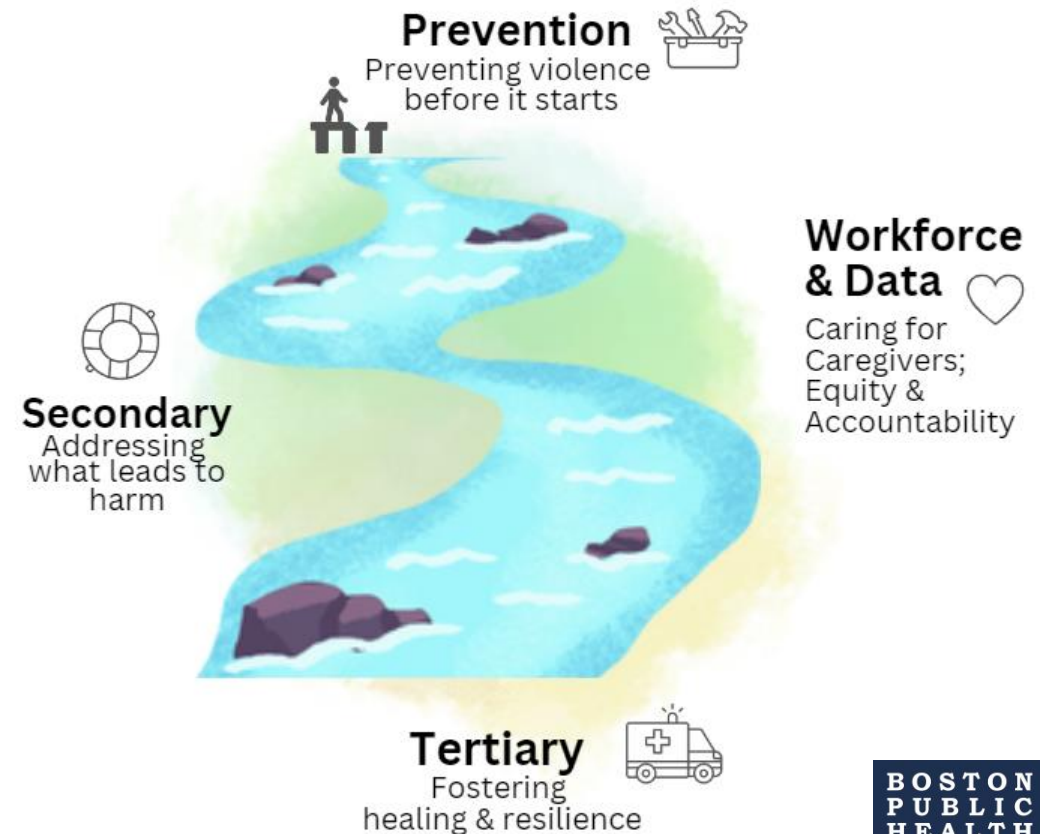
Boston's Plan to End Violence

- CDC PREVAYL (Preventing Violence Affecting Young Lives) grant
- OVP and Mayor's Office of Community Safety
- Community engagement informs plan elements

Community engagement themes



Elements of the plan



Boston Board of Health

January 22, 2025

AGENDA

1. Chairperson's Remarks
2. Executive Office Report
3. Acceptance and Approval of Minutes
4. FY26 Budget Process Overview
5. Live Long and Well Population Health Equity Agenda Updates
6. Spotlight: Office of Violence Prevention
7. Adjourn