



Designing the future of **RONAN PARK**

The meeting will begin shortly...



MEETING RECORDING



The Boston Parks and Recreation Department will be recording the meeting and posting to our project webpage for those who are unable to attend the Zoom meeting live.

It is possible that participants may also be recording the meeting with their phones cameras or other devices. If you do not wish to be recorded during this meeting, please keep your microphone muted and camera off.

*Please share with your neighbors and friends,
www.boston.gov/ronan-park*



VIRTUAL MEETING ETIQUETTE

We want to ensure this conversation is a pleasant experience for all and that all community members/stakeholders are comfortable sharing their comments, questions and feedback.

Please be respectful and mindful of each other's time when asking questions/ providing comments, so that all attendees are able to participate in the meeting.

Keep questions/ comments project-specific and not personal to yield solution-driven discussion.

Please wait until all attendees have had the opportunity to ask a question/ provide a comment before providing additional questions/ comments.

*You can always set up a conversation with **Kezia Ofiesh**, kezia.ofiesh@boston.gov, to further discuss the project or process.*



ZOOM TIPS

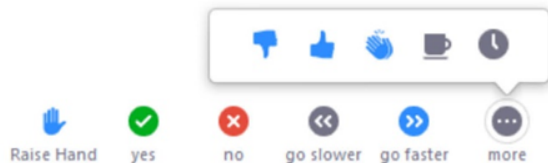
Here is how you can participate during the question and answer part of the presentation.

DURING THE PRESENTATION:



VIA WEB:

Turn video on / off.



To use these non-verbal options click on participants (bottom of screen); these options will pop up in side bar.

DURING THE Q&A:



JOINING VIA PHONE?

Use *9 to raise hand to ask for audio / video permission to ask questions or provide comments.



VIA WEB:

Chat to ask questions / comments or provide responses to poll questions



Raise hand to ask for audio / video permission to ask questions or provide comments.



AGENDA

1

PROJECT OVERVIEW

2

WHAT WE HEARD – COMMUNITY MEETING 1

3

PROJECT GOALS

4

DESIGN CONCEPTS

5

TEAM LISTENING & COMMUNITY DISCUSSION

6

CLOSING REMARKS & NEXT STEPS



PROJECT TEAM

Kezia Ofiesh

PROJECT MANAGER, BRPD

kezia.ofiesh@boston.gov or 617-961-3059

Cathy Baker-Eclipse

DIRECTOR OF THE CAPITAL PLAN, BRPD

cathy.baker-eclipse@boston.gov

Steve Kruskowski

Program Manager, BRPD

Anthony Nguyen

MID-DORCHESTER LIAISON, OFFICE OF NEIGHBORHOOD SERVICES

anthony.nguyen@boston.gov

Kaki Martin, Principal

Jennifer Ng, Senior Associate

Melita Schmeckpeper, Designer

Dora Mugerwa, Designer

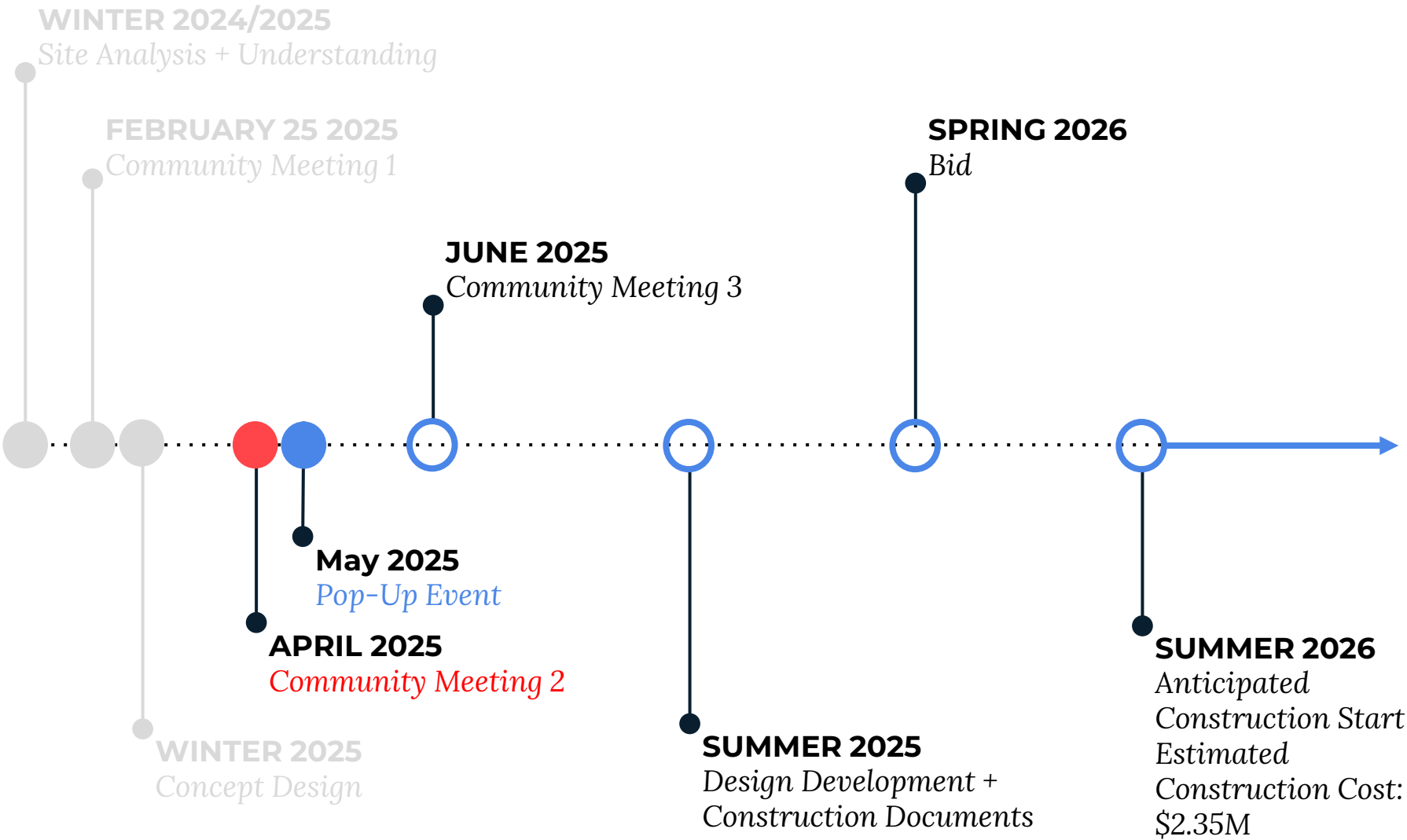
Klopfer Martin Design Group



PROJECT OVERVIEW



PROJECT SCHEDULE & FUNDING





CITY OF BOSTON PRIORITIES

A city that is:

- **Delivering Exceptional Constituent Services**
- **Green and Growing**
- **Family Friendly**
- **Closing the Racial Wealth Gap**
- **Healthy and Safe**



PARK & RECREATION GOALS

- Accessible and available to all
- Diverse, balanced, and efficient mix of uses
- Meaningful and inclusive community engagement
- Adaptive and resilient landscapes
- Promote connections

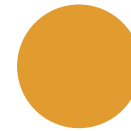
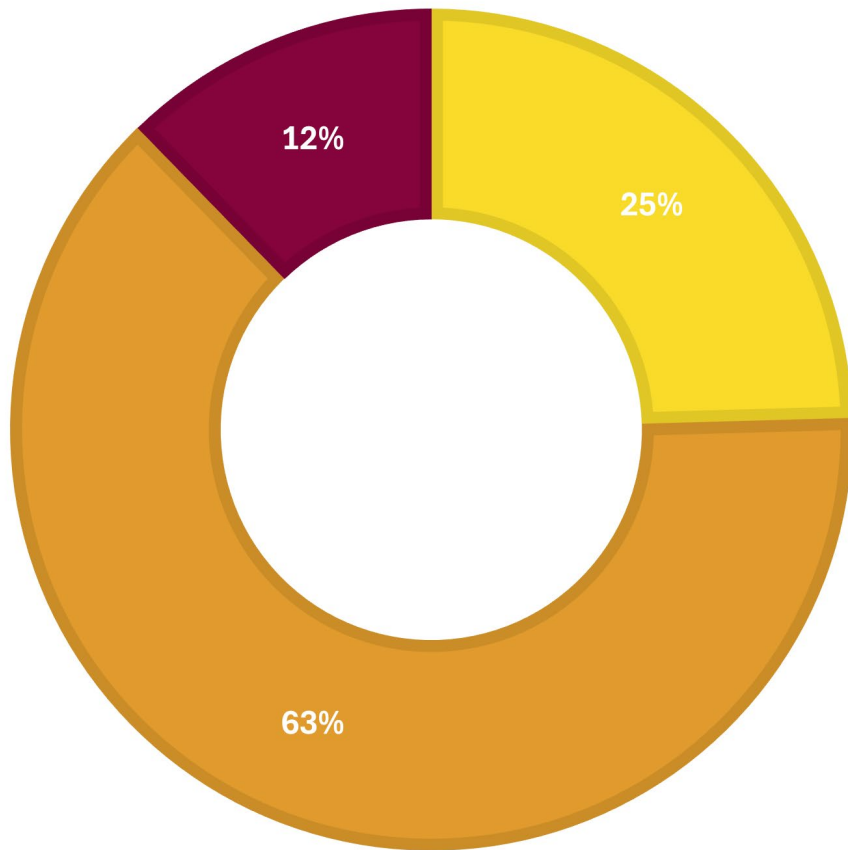


WHAT WE HEARD COMMUNITY MEETING 1



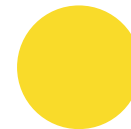
WHAT WE HEARD

FAVORITE THINGS TO DO IN UPPER RONAN PARK



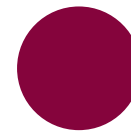
Gather, Trees + Plants

- Enjoy the view
- Observe nature
- The big trees
- Meeting neighbors



Play + Recreation

- Play basketball
- Playing in splash pad
- Walking and Dog walking
- Exercise classes



Programming

- Summer activities
- Markets
- Festivals
- Live music



WHAT WE HEARD

WISHES FOR UPPER RONAN PARK

*NOTE: This includes comments from Community Meeting 1 and the Google Survey



EXPERIENTIAL SITE ANALYSIS



KIDS PLAY and create their own flexible lawn experience in this area



BEST VIEW is from the Overlook at fourth bench



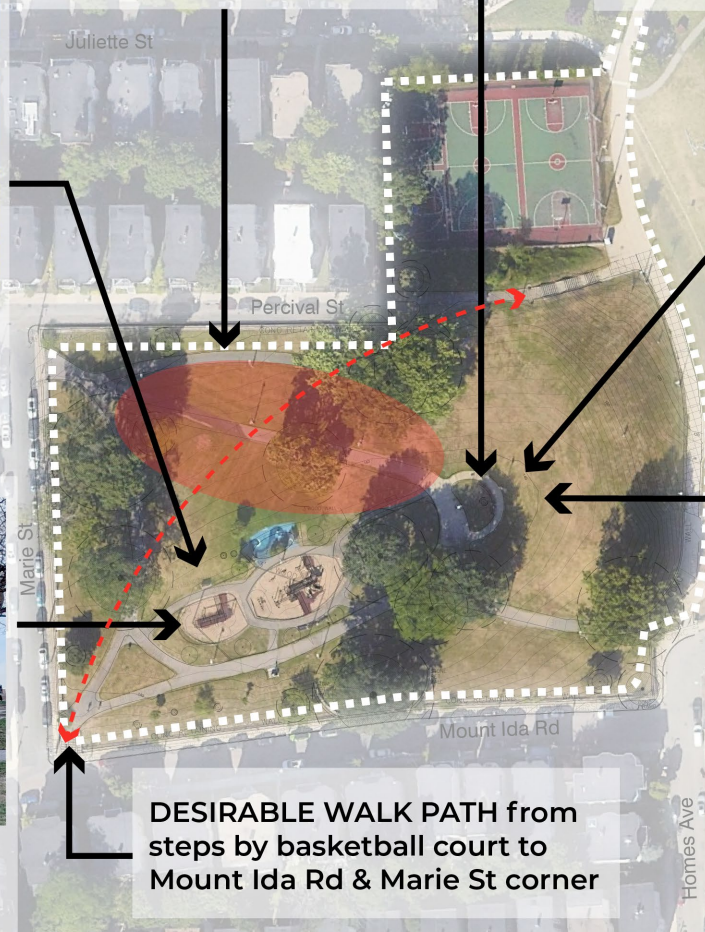
PLAY AREA is partially hidden from view from Percival St. & Marie St.



OVERLOOK gathering area is visible from Lower Park



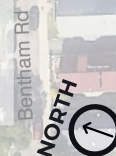
SWINGS are popular for kids and adults



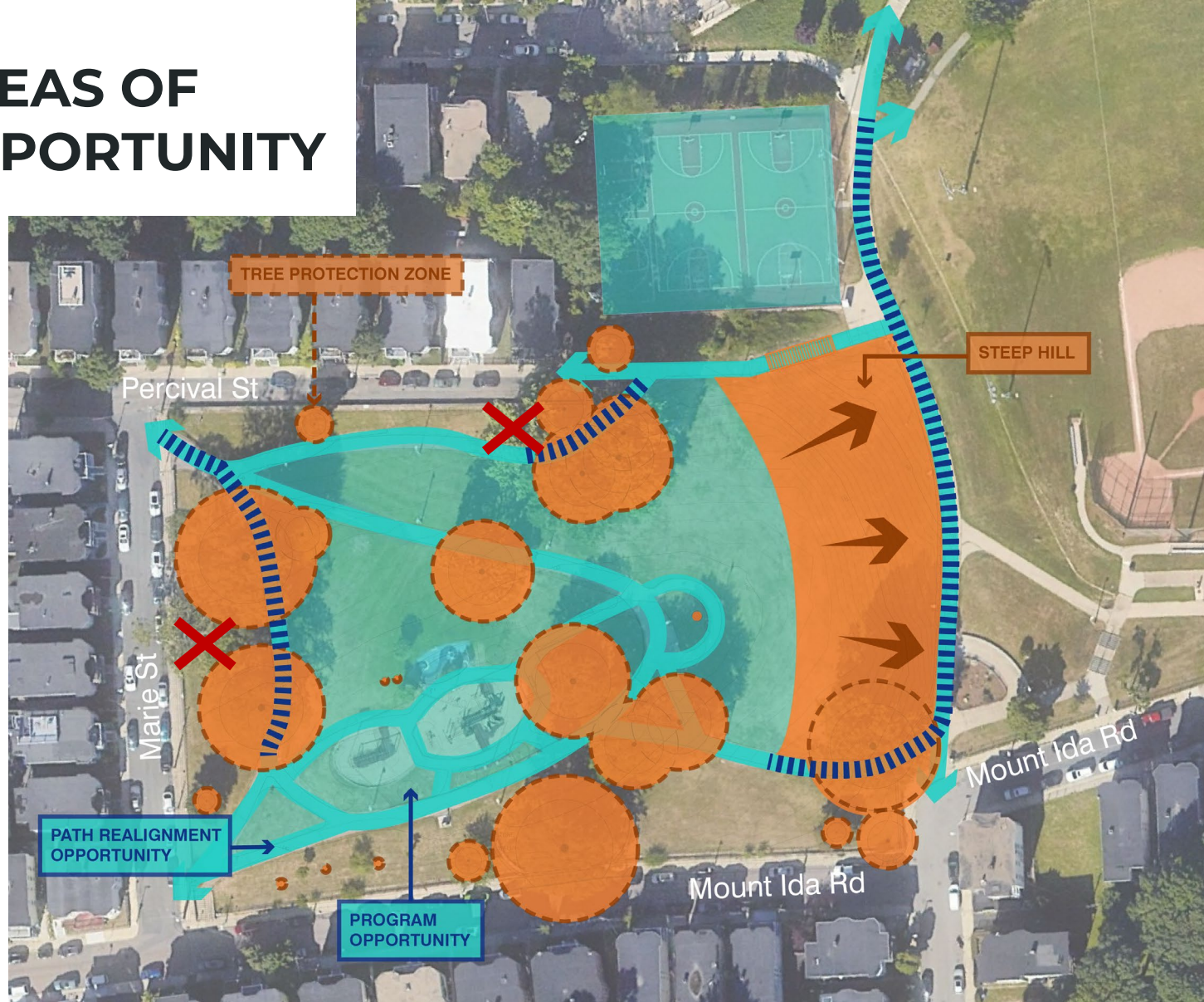
DESIRABLE WALK PATH from steps by basketball court to Mount Ida Rd & Marie St corner



OVERLOOK gathering area is hidden from lower path



AREAS OF OPPORTUNITY



NOTE: Areas of Constraints based on Tree Assessment Report.

LEGEND

- Areas of Opportunities
- Areas of Constraints
- Inaccessible paths
- Trees previously removed for safety



PROJECT GOALS



PROJECT GOALS

BASED ON WHAT WE HEARD

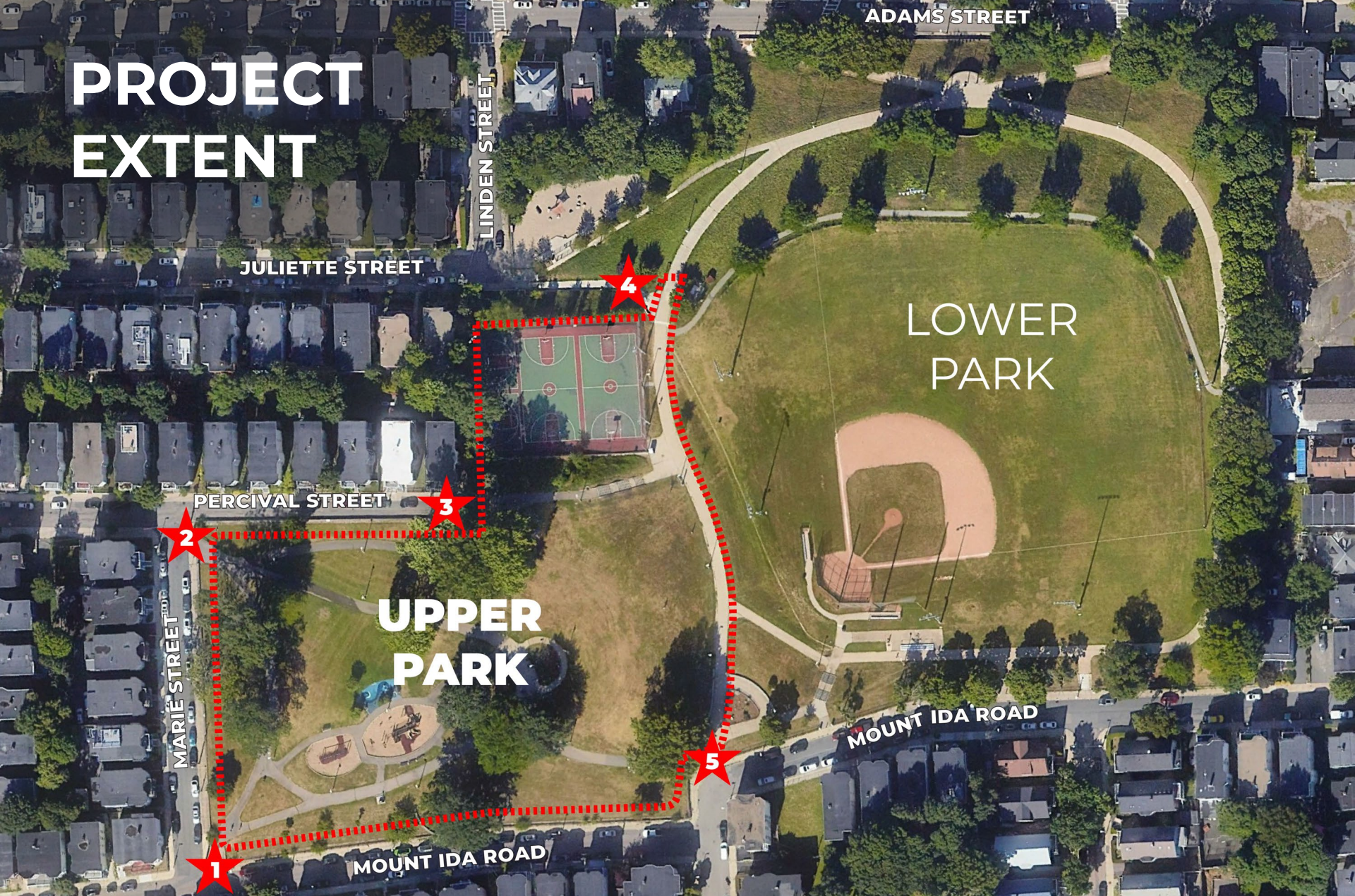
1. Provide an accessible path between Upper and Lower Ronan Park.
2. Celebrate the views in the park's design.
3. Maximize multi-generational play, gathering, and walking opportunities in park's design.
4. Improve basketball courts and add benches for viewing.
5. Maintain and protect existing healthy trees and design for the next generation of tree canopy.
6. Address drainage issues at lower path.
7. Provide park essentials to improve maintenance and overall park experience.



DESIGN CONCEPTS



PROJECT EXTENT



LEGEND



Extent of Ronan Park Project
Park Entrances



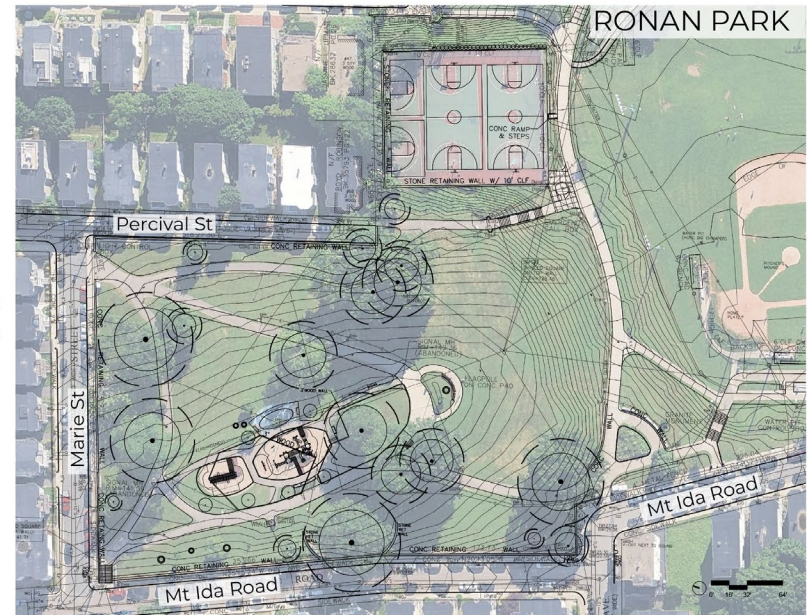
CAKE, ANYONE?

WHAT IS A PLAN?



View from Above

=



Plan



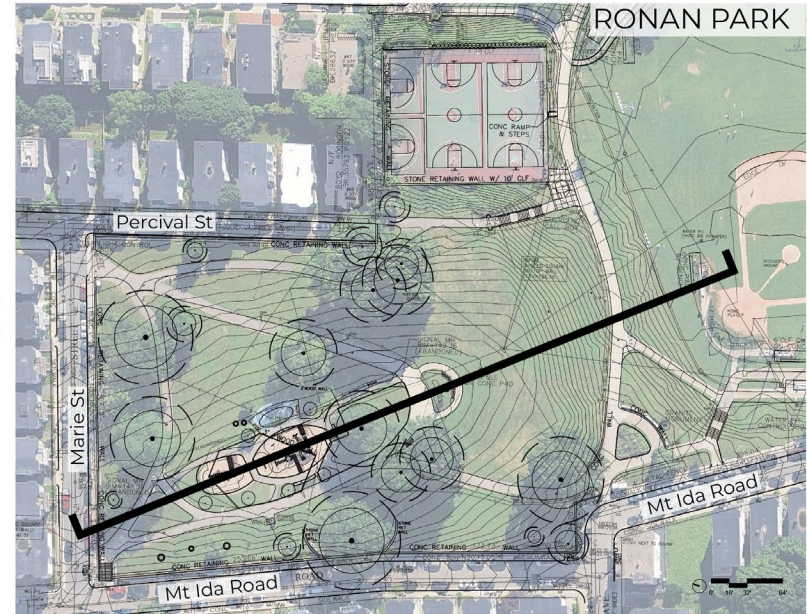
CAKE, ANYONE?

WHAT IS A SECTION CUT LINE?



Cut

=



Section Cut Line



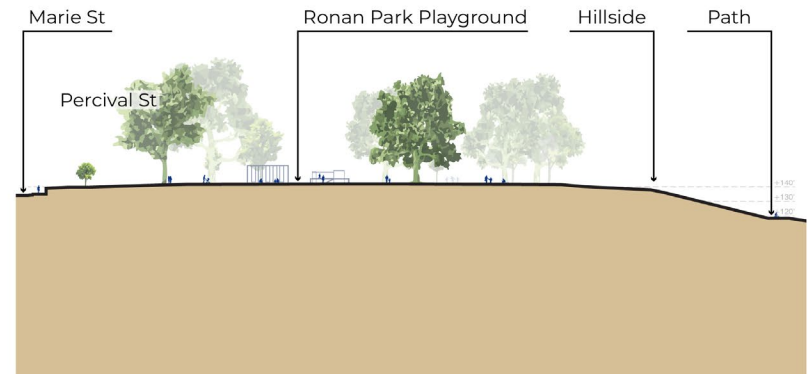
CAKE, ANYONE?

WHAT IS A SECTION?



Slice

=



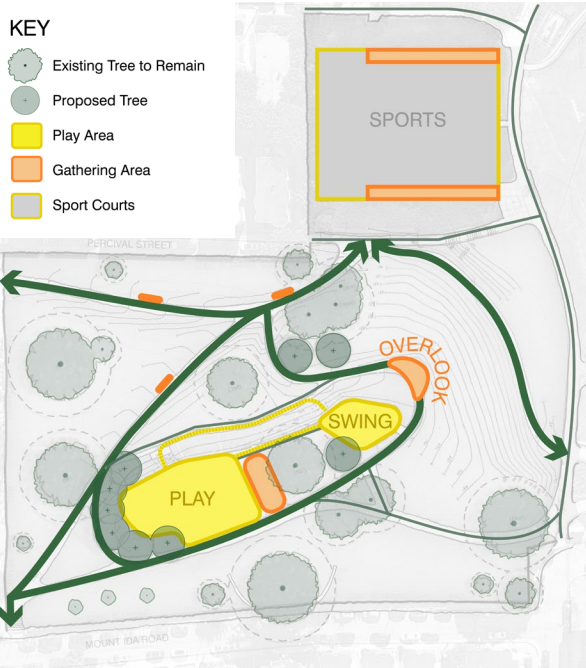
Section



CONCEPT OVERVIEW

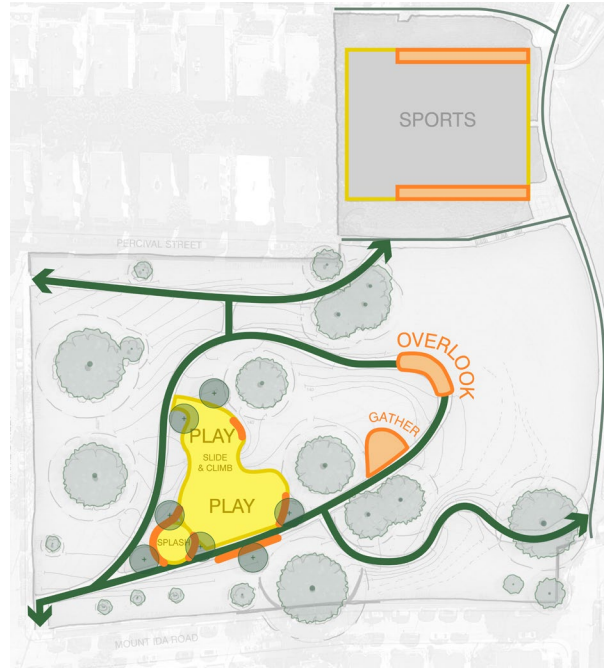
KEY

-  Existing Tree to Remain
-  Proposed Tree
-  Play Area
-  Gathering Area
-  Sport Courts



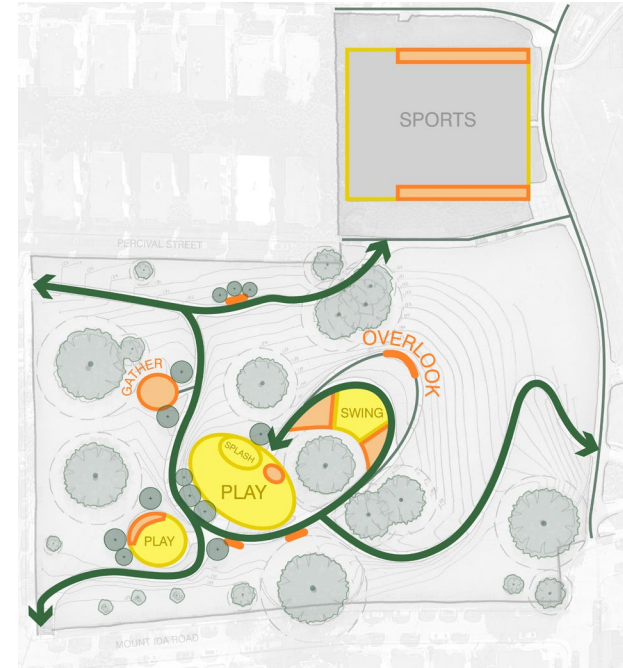
THE PROW

- A “Simple and direct path” system.
- Play and Gathering are at the top of the hill.
- Swings face view of water.
- Overlook and seating are expanded.



LOOP

- A “Loop path” system.
- Gathering and Play are within the loop path, but separated.
- Play is on two different levels with a play slope.
- Overlook has a dedicated picnic area and flexible lawn space.



MEANDER

- A “Meandering path” system.
- Play spread to three locations.
- Gathering spread to five locations.
- Overlook has range of seating and play.
- A new secondary overlook with seating.



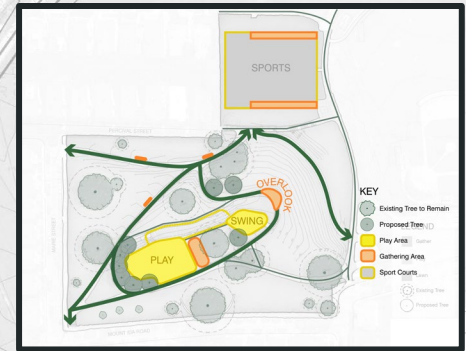
THE PROW PLAN

Picnic

Play on Slope

2-5 Play

5-12 Play



CONCEPT PLAN

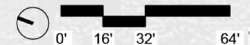
Upper and Lower Ronan Park
Path Connection

Overlook

Swings

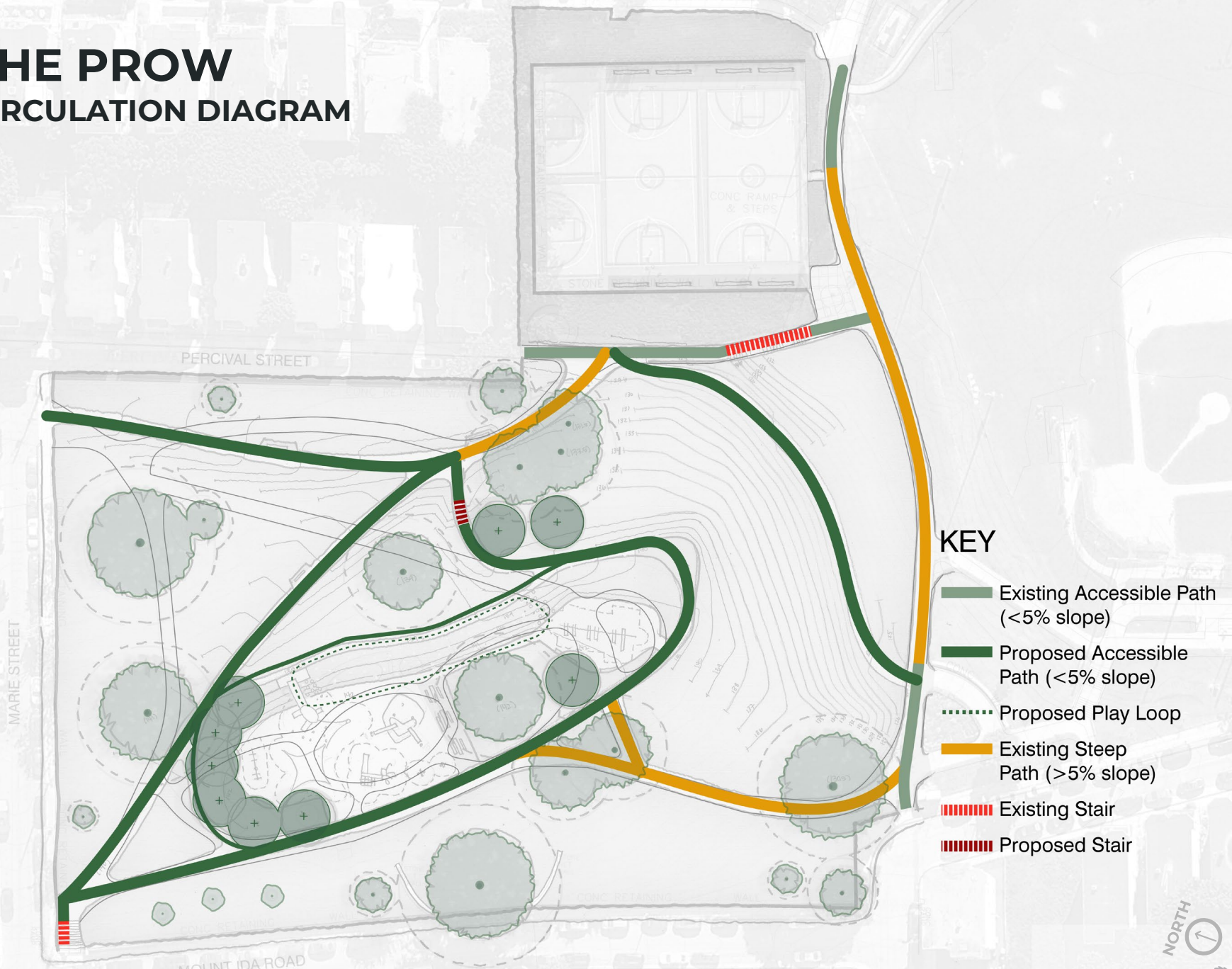
LEGEND

- Gathering Area
- Play Area
- Splash Pad
- Lawn
- Existing Tree
- Proposed Tree



THE PROW

CIRCULATION DIAGRAM



KEY

- Existing Accessible Path (<5% slope)
- Proposed Accessible Path (<5% slope)
- ⋯ Proposed Play Loop
- Existing Steep Path (>5% slope)
- ▨ Existing Stair
- ▨ Proposed Stair



LOOP PLAN

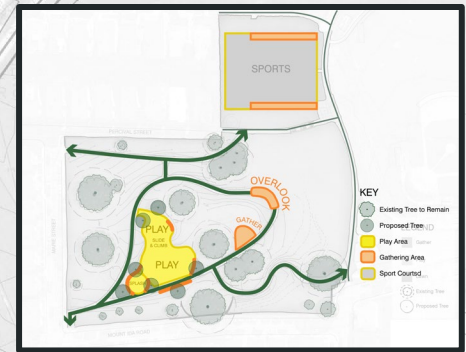
Swings

5-12 Play

2-5 Play

Play on Slope

Multi-Use Sports Courts



CONCEPT PLAN

Open Lawn

Picnic

Overlook

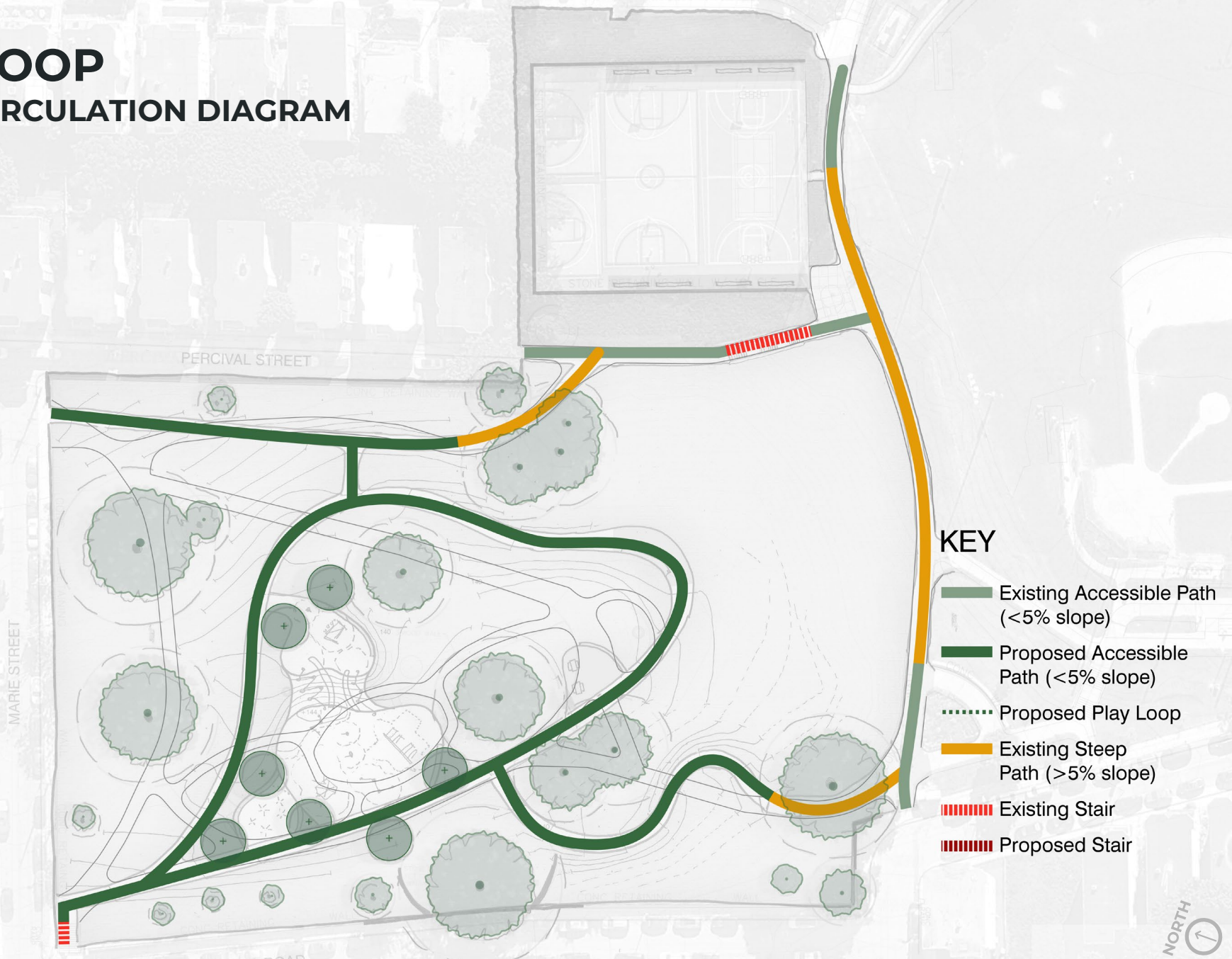
Upper and Lower Ronan Park
Path Connection

LEGEND

- Gathering Area
- Play Area
- Splash Pad
- Lawn
- Existing Tree
- Proposed Tree

0' 16' 32' 64'

LOOP CIRCULATION DIAGRAM



KEY

- Existing Accessible Path (<5% slope)
- Proposed Accessible Path (<5% slope)
- ⋯ Proposed Play Loop
- Existing Steep Path (>5% slope)
- ▤▤▤▤▤ Existing Stair
- ▤▤▤▤▤ Proposed Stair



MEANDER PLAN

5-12 Play

2-5 Play

Game Tables

Picnic

Multi-Use Sports Courts

CONC RAMP & STEPS

STONE RETAINING WALL

PERCIVAL STREET

MARIE STREET

MOUNT IDA ROAD

Picnic

Swings

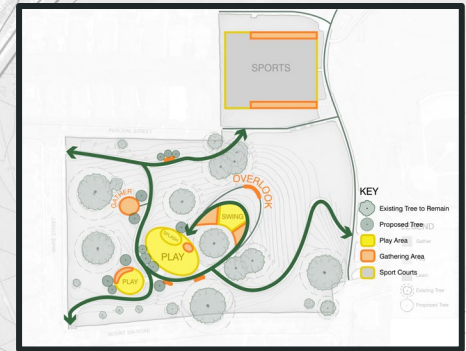
Overlook

Upper and Lower Ronan Park
Path Connection

LEGEND

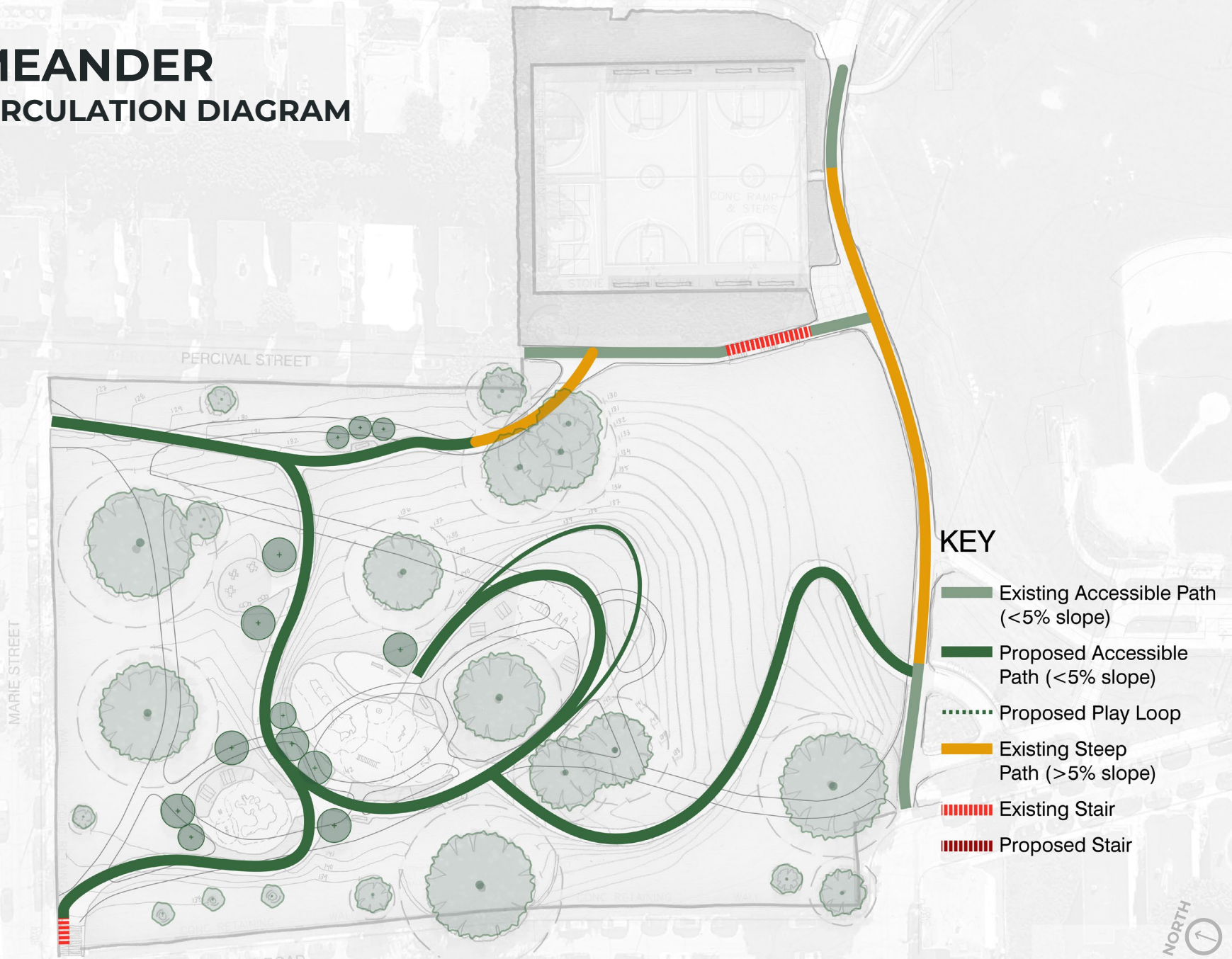
- Gathering Area
- Play Area
- Splash Pad
- Lawn
- Existing Tree
- Proposed Tree

0' 16' 32' 64'



CONCEPT PLAN

MEANDER CIRCULATION DIAGRAM



KEY

- Existing Accessible Path (<5% slope)
- Proposed Accessible Path (<5% slope)
- ⋯ Proposed Play Loop
- Existing Steep Path (>5% slope)
- ▨ Existing Stair
- ▨ Proposed Stair



CONCEPT SUMMARY



THE PROW

- A “Simple and direct path” system.
- Play and Gathering are at the top of the hill.
- Swings face view of water.
- Overlook and seating are expanded.



LOOP

- A “Loop path” system.
- Gathering and Play are within the loop path, but separated.
- Play is on two different levels with a play slope.
- Overlook has a dedicated picnic area and flexible lawn space.



MEANDER

- A “Meandering path” system.
- Play spread to three locations.
- Gathering spread to five locations.
- Overlook has range of seating and play.
- A new secondary overlook with seating.

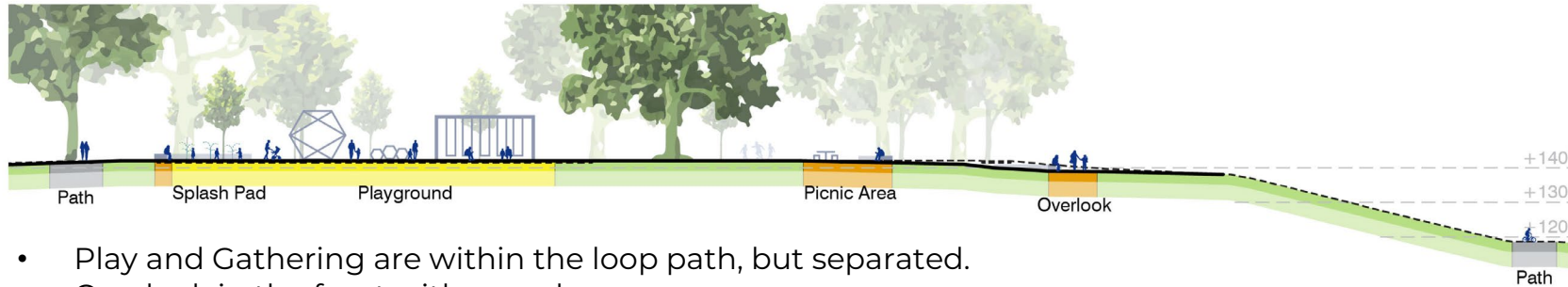


THE PROW



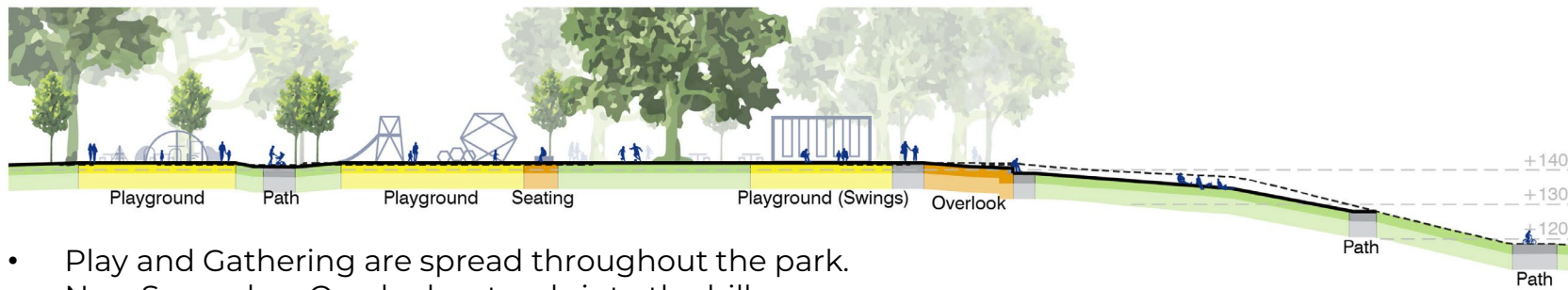
- Play and Gathering are in one Long Room at the top of the hill.
- Upper to Lower Ronan Park path connection changes existing hill character.

LOOP



- Play and Gathering are within the loop path, but separated.
- Overlook in the front with open lawn.
- Upper to Lower Ronan Park path connection maintains existing hill character.

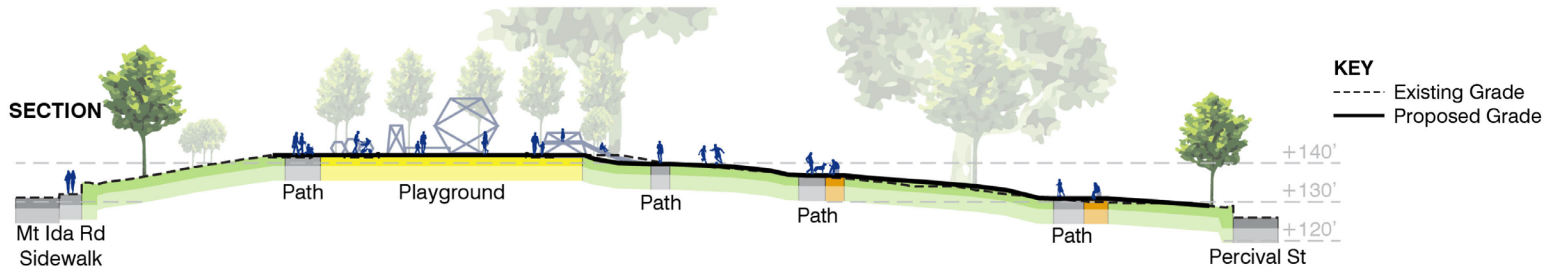
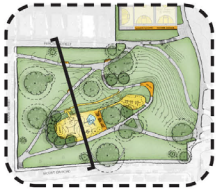
MEANDER



- Play and Gathering are spread throughout the park.
- New Secondary Overlook extends into the hill.
- Upper to Lower Ronan Park path connection changes existing hill character.

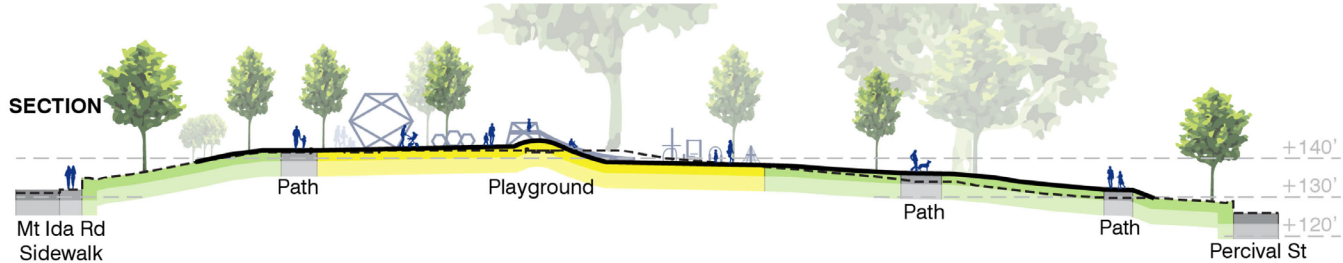


THE PROW



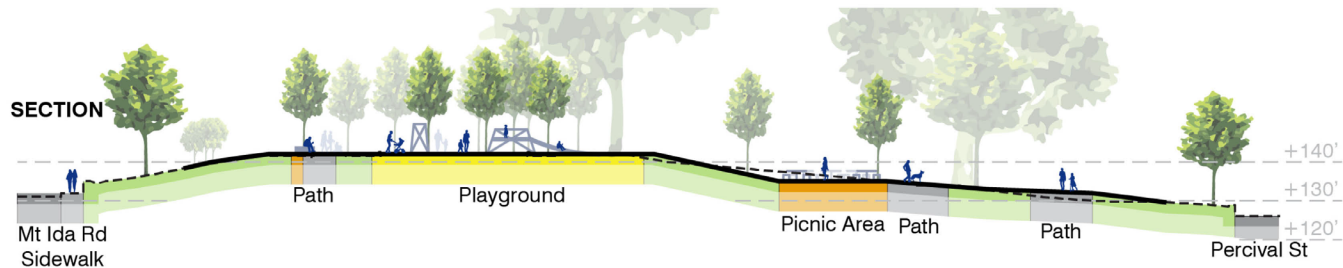
- Play stays at the top of the hill.
- Paths provide direct connection across the park.

LOOP



- Play is on two different levels, going down the slope towards Percival Street.
- Paths are a loop.

MEANDER



- Play and Gathering are spread down the slope towards Percival Street.
- Paths meander through the park.



PRECEDENT PLAY

***NOTE:** These images serve as examples.
All play will have rubber surfacing.



Slide on a Hill



Standing Slide



Individual Swings



Group Swings



Paired Swings



Group Spinner



Rocker



Net Climber



Wall Climber



Steppers



Imaginary Play



Bucket Spinner



Hangout Dens



Balance Walk



Tunnel



PRECEDENT

RUBBER SURFACING



PRECEDENT

SPLASH PAD



Mist



Mist



Water Table

Note: Surface will not be sand.



In-ground Spray



Loop Spray

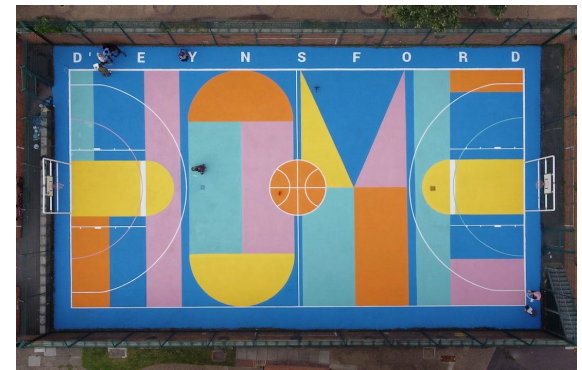
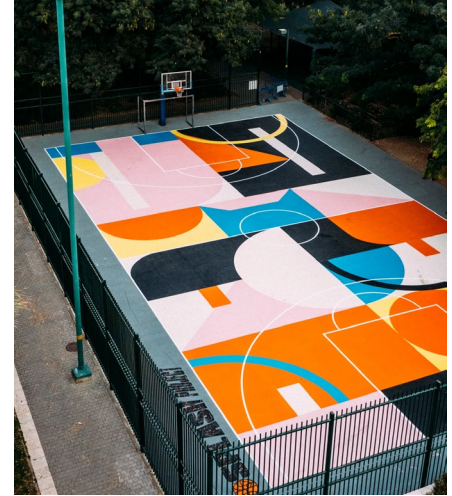


Shower Spray



PRECEDENT

PAINTED SPORT COURTS



PRECEDENT

GATHERING AND PATHS



Seating along a Path



Seating at Play



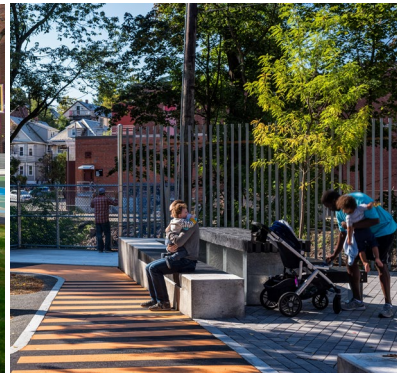
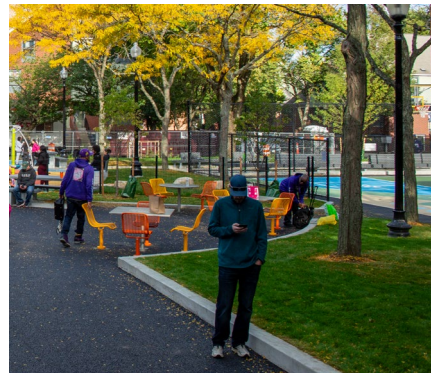
Park Benches



Tiered Seating



Game Tables for Small Groups and Larger Gatherings



Picnic Tables for Small Groups and Larger Gatherings



TEAM LISTENING & COMMUNITY DISCUSSION



Adams Street

Linden Street

Juliette Street

Percival Street

Marie Street

Mount Ida Road

Homes Avenue

Mount Ida Road

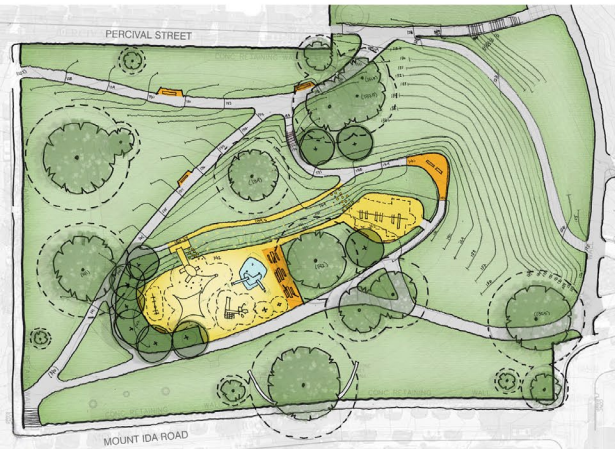
Bentham Road

LOWER
PARK

UPPER
PARK

DISCUSSION

How would you like play to be organized?



One Long Room

- Play, including water play, for all ages are at the top of the hill.



Tiered Rooms

- Play is on two different levels and connected by a slope with play opportunities.



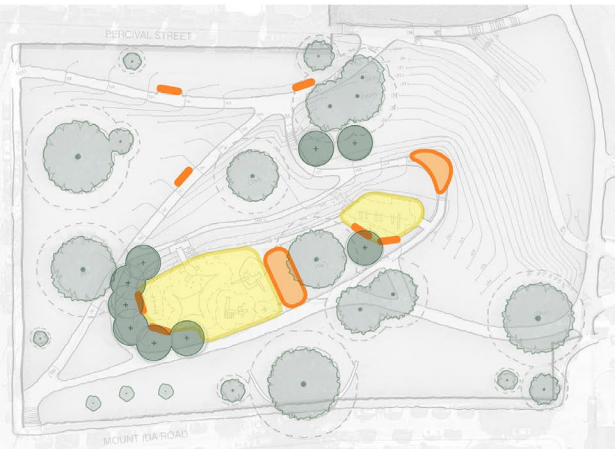
Many Small Rooms

- Play is in multiple areas and connected by a meandering path.



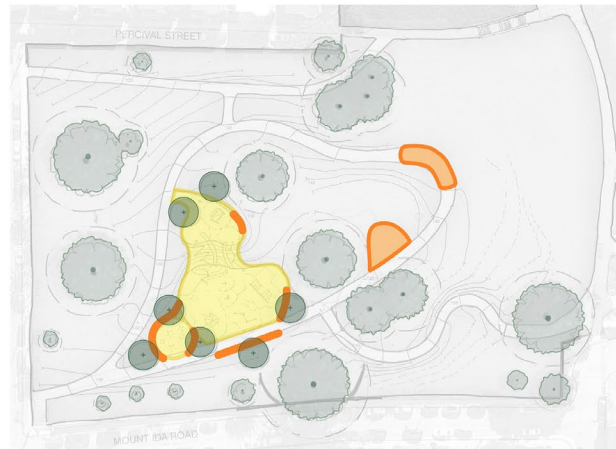
DISCUSSION

How would you like to experience play and gathering?



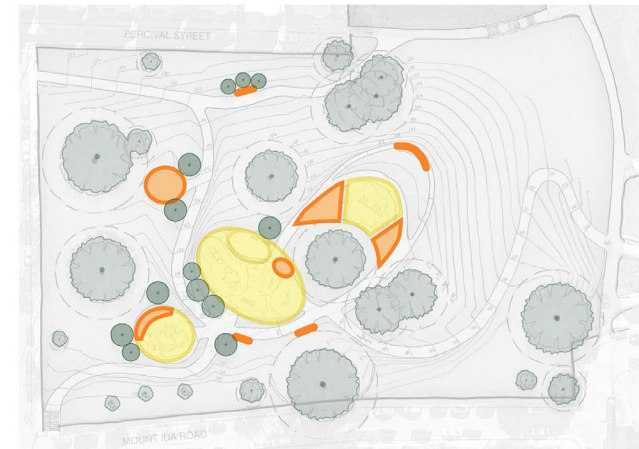
Integrated

Gathering is mostly integrated with play experience.



Separated

Gathering is separated from the play experience.



Scattered

Gathering is spread throughout the Upper Park and play areas.

KEY

- Existing Tree to Remain
- Proposed Tree
- Play Area
- Gathering Area



DISCUSSION

What are your thoughts on improving the basketball courts?



Add art + imaginary play.



Add multi-purpose games.



Keep the basketball courts the same with a new overlay and paint.



DISCUSSION

What type of play do you like?



Sliding



Swinging



Hanging out



Spinning



Tower Climbing



Net Climbing



Imagination Play



COMMUNITY SURVEY

WE LOOK FORWARD TO HEARING FROM YOU!

COMMUNITY SURVEY

<https://bit.ly/RonanSurvey2>



Join us for a **Pop-Up in Ronan Park** by the flag pole!

Saturday May 3, 10AM-12PM





THANK YOU!

Next Meeting - JUNE 2025

For questions, maintenance requests or concerns regarding any of our parks contact 311

BOS:
311

To learn more, visit the project website:
www.boston.gov/ronan-park
For questions or comments about this project,
contact Kezia Ofiesh
kezia.ofiesh@boston.gov



April 29, 2025
Boston Parks and Recreation

