



# Boston Wastewater Epidemiology Report

**Updated:** 30-Jun-2025 | **Data Complete Through:** 22-Jun-2025

✉ [wastewater@bphc.org](mailto:wastewater@bphc.org)



Boston Public  
Health Commission

# Report Contents



## COVID-19 Summary

- Neighborhood Levels and Trends
- COVID-19 Citywide Overview and Trends
- BPHC Trend Overview by Neighborhood

## Detailed Results

### Results by Neighborhood

- Allston/Brighton
- Back Bay
- Charlestown
- Dorchester
- East Boston
- Hyde Park
- Jamaica Plain
- Mattapan
- Roslindale/West Roxbury
- Roxbury

## Variant Results

- Percent Variant Lineages (Citywide)

## Influenza & RSV

- Influenza Detections in Wastewater
- Influenza Trends in Wastewater by Neighborhood
- RSV Detections in Wastewater
- RSV Trends in Wastewater by Neighborhood

# A Note About These Reports

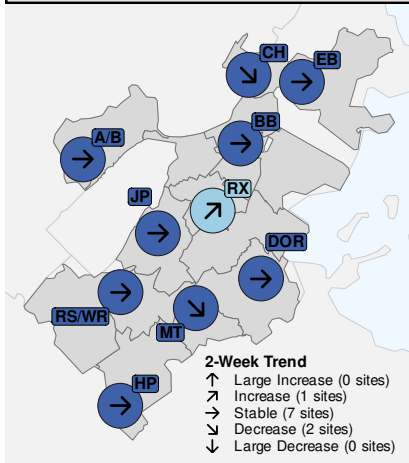


The laboratory that tests Boston's wastewater changed on August 1, 2024. Because of differences in the methods used at the old laboratory and the new one, data may not be comparable before and after the change. The change is marked with a vertical red line on figures in this report. BPHC cautions against drawing conclusions by comparing data to the left and right of this line. BPHC closely monitors the data and the methods used to communicate these results, and presents the best understanding of the data in these reports. A report with more information about the lab change will be made available on the BPHC Wastewater Monitoring web page.

# Neighborhood Levels and Trends



## COVID-19 Wastewater Levels & Trends (22-Jun-2025)



COVID-19 Level (# sites)

Level	9 sites	1 sites			
Very Low					
Low					
Moderate					
High					
Very High					

## BOSTON CITYWIDE COVID-19 LEVEL & TRENDS

### COVID-19 LEVEL

**Very Low**

210 copies/mL  
samples through 22-Jun-2025

### 2-WEEK TRENDS



Stable  
+ 11 copies/mL (+6%)

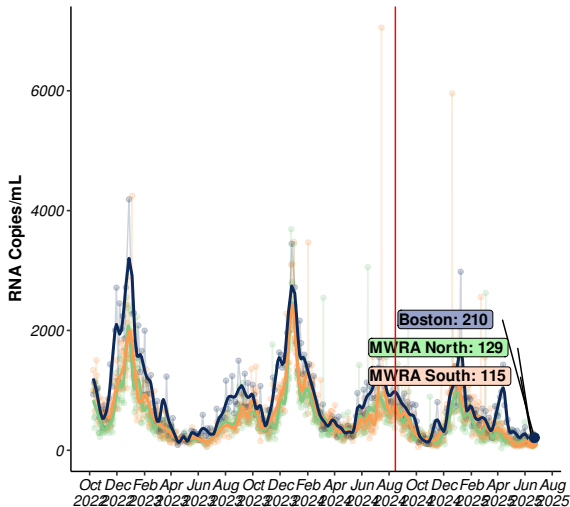
## NEIGHBORHOOD SITES COVID-19 LEVEL & TRENDS

Level	Neighborhood/Site	Trend
Low	Roxbury (RX)	↗ Increase
	Back Bay (BB)	→ Stable
	Allston/Brighton (A/B)	→ Stable
	Jamaica Plain (JP)	→ Stable
	Mattapan (MT)	↘ Decrease
Very Low	Dorchester (DOR)	→ Stable
	East Boston (EB)	→ Stable
	Roslindale/West Roxbury (RS/WR)	→ Stable
	Charlestown (CH)	↘ Decrease
	Hyde Park (HP)	→ Stable

For additional details see:

- [Results by Neighborhood](#)
- [Detailed Neighborhood Levels and Trends Table](#)
- [Trend and Level Category Definitions](#)

# COVID-19 Citywide Overview and Trends



CITYWIDE  
AVERAGE

**210**

*RNA copies/mL*

RANGE ACROSS 11  
NEIGHBORHOOD SITES

**53-718**

*RNA copies/mL*

Data through: **22-Jun-2025**

## 2-WEEK TRENDS

*Boston*  
**Stable**

**+6%**  
over the past 14 days

*MWRA North*  
**Stable**

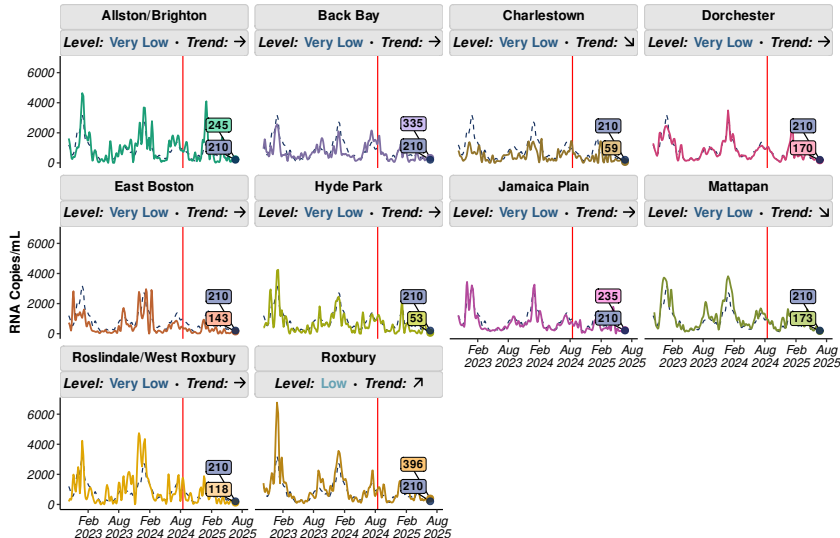
**-24%**  
over the past 14 days

*MWRA South*  
**Stable**

**-23%**  
over the past 14 days

Updated: 30-Jun-2025 | Samples through: 22-Jun-2025 (BPHC); 18-Jun-2025 (MWRA) | MWRA Data: <https://www.mwra.com/biobot/biobotdata.htm>

# BPHC Trend Overview by Neighborhood



For each neighborhood, colored line and textbox shows the smoothed trend and most recent value in that neighborhood;

The dotted blue line and dark blue text box in each panel shows the trend and most recent value across **all Boston sites** weighted by population.

The vertical red line marks the date of August 1, 2024, when the laboratory that tests Boston's wastewater changed.

To see details and interpretation of these results for an individual neighborhood see [Results by Neighborhood](#).

# Results by Neighborhood



- [Allston-Brighton \(A/B\)](#)
- [Back Bay \(BB\)](#)
- [Charlestown \(CH\)](#)
- [Dorchester \(DOR\)](#)
- [East Boston \(EB\)](#)
- [Hyde Park \(HP\)](#)
- [Jamaica Plain \(JP\)](#)
- [Mattapan \(MT\)](#)
- [Roslindale/West Roxbury \(RS/WR\)](#)
- [Roxbury \(RX\)](#)
- [South Boston \(SB\)](#)

# Allston/Brighton

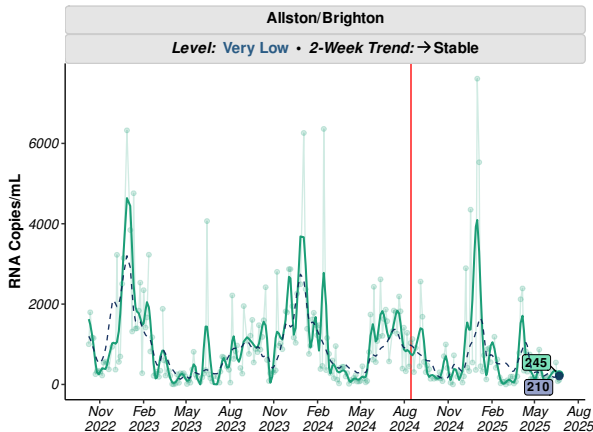


Level: **Very Low**

- Average value in **A/B** over the past week: **245** copies/mL.
- This value is **very low** compared to past values and **similar** than the citywide average (**210** copies/mL).

Trend: → **Stable**

- Over the past two weeks, values in **A/B** are **stable**.
- Change compared to two weeks ago: **-55** copies/mL (**-18%**).



Updated: 30-Jun-2025 | Samples through: 22-Jun-2025 (A/B);

See [recommended actions and resources](#) based on levels and trends in this neighborhood.



# Back Bay

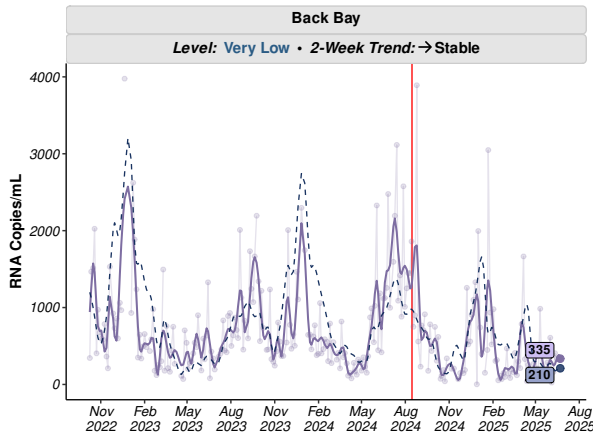


Level: **Very Low**

- Average value in **BB** over the past week: **335** copies/mL.
- This value is **very low** compared to past values and **similar** than the citywide average (**210** copies/mL).

Trend: → **Stable**

- Over the past two weeks, values in **BB** are **stable**.
- Change compared to two weeks ago: **+90** copies/mL (**+37%**).



Updated: 30-Jun-2025 | Samples through: 22-Jun-2025 (BB);

See [recommended actions and resources](#) based on levels and trends in this neighborhood.

# Charlestown

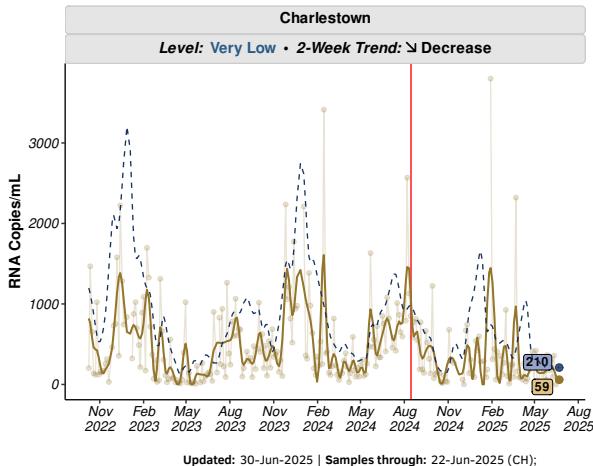


Level: **Very Low**

- Average value in **CH** over the past week: **59** copies/mL.
- This value is **very low** compared to past values and **similar** than the citywide average (**210** copies/mL).

Trend: **Decrease**

- Over the past two weeks, values in **CH** are **decreasing**.
- Change compared to two weeks ago: **-159** copies/mL (**-73%**).



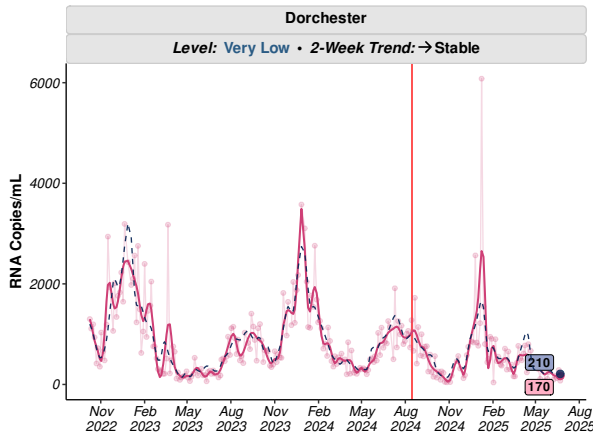
See [recommended actions and resources](#) based on levels and trends in this neighborhood.

Level: **Very Low**

- Average value in **DOR** over the past week: **170** copies/mL.
- This value is **very low** compared to past values and **similar** than the citywide average (**210** copies/mL).

Trend: → **Stable**

- Over the past two weeks, values in **DOR** are **stable**.
- Change compared to two weeks ago: **-15** copies/mL (**-8%**).



Updated: 30-Jun-2025 | Samples through: 22-Jun-2025 (DOR);

See [recommended actions and resources](#) based on levels and trends in this neighborhood.

# East Boston

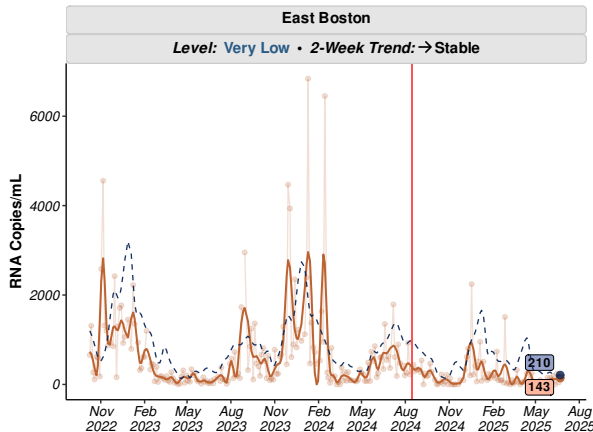


Level: **Very Low**

- Average value in **EB** over the past week: **143** copies/mL.
- This value is **very low** compared to past values and **similar** than the citywide average (**210** copies/mL).

Trend: → **Stable**

- Over the past two weeks, values in **EB** are **stable**.
- Change compared to two weeks ago: **+22** copies/mL (**+18%**).



Updated: 30-Jun-2025 | Samples through: 22-Jun-2025 (EB);

See [recommended actions and resources](#) based on levels and trends in this neighborhood.

# Hyde Park

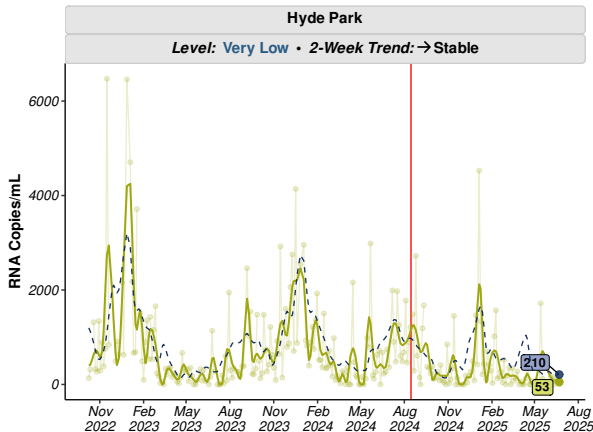


Level: **Very Low**

- Average value in **HP** over the past week: **53** copies/mL.
- This value is **very low** compared to past values and **similar** than the citywide average (**210** copies/mL).

Trend: → **Stable**

- Over the past two weeks, values in **HP** are **stable**.
- Change compared to two weeks ago: **-52** copies/mL (**-49%**).



Updated: 30-Jun-2025 | Samples through: 22-Jun-2025 (HP);

See [recommended actions and resources](#) based on levels and trends in this neighborhood.

# Jamaica Plain

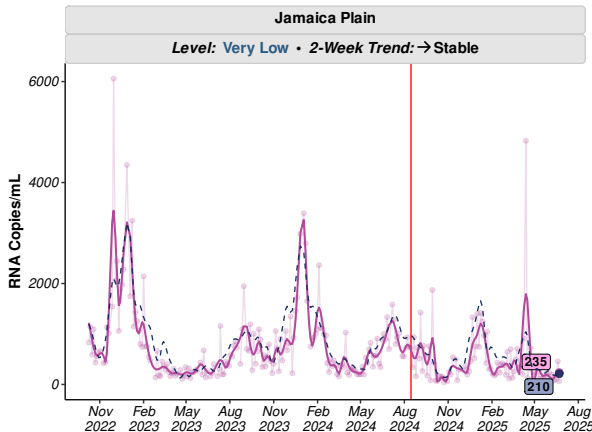


Level: **Very Low**

- Average value in **JP** over the past week: **235** copies/mL.
- This value is **very low** compared to past values and **similar** than the citywide average (**210** copies/mL).

Trend: → **Stable**

- Over the past two weeks, values in **JP** are **stable**.
- Change compared to two weeks ago: **+126** copies/mL (**+115%**).



Updated: 30-Jun-2025 | Samples through: 22-Jun-2025 (JP);

See [recommended actions and resources](#) based on levels and trends in this neighborhood.

# Mattapan

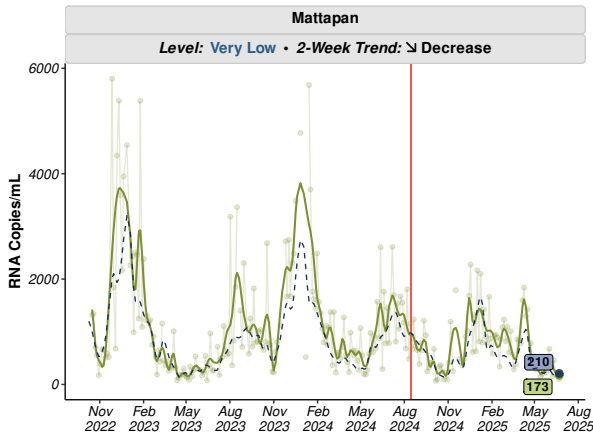


Level: **Very Low**

- Average value in **MT** over the past week: **173** copies/mL.
- This value is **very low** compared to past values and **similar** than the citywide average (**210** copies/mL).

Trend: **Decrease**

- Over the past two weeks, values in **MT** are **decreasing**.
- Change compared to two weeks ago: **-183** copies/mL (**-51%**).



Updated: 30-Jun-2025 | Samples through: 22-Jun-2025 (MT);

See [recommended actions and resources](#) based on levels and trends in this neighborhood.

# Roslindale/West Roxbury

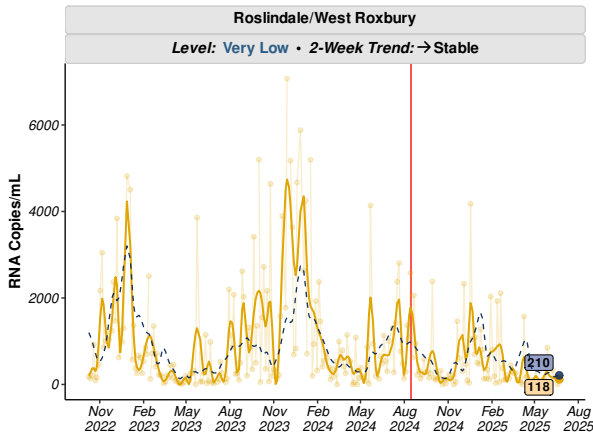


Level: **Very Low**

- Average value in **RS/WR** over the past week: **118** copies/mL.
- This value is **very low** compared to past values and **similar** than the citywide average (**210** copies/mL).

Trend: **→ Stable**

- Over the past two weeks, values in **RS/WR** are **stable**.
- Change compared to two weeks ago: **-44** copies/mL (**-27%**).



Updated: 30-Jun-2025 | Samples through: 22-Jun-2025 (RS/WR);

See [recommended actions and resources](#) based on levels and trends in this neighborhood.

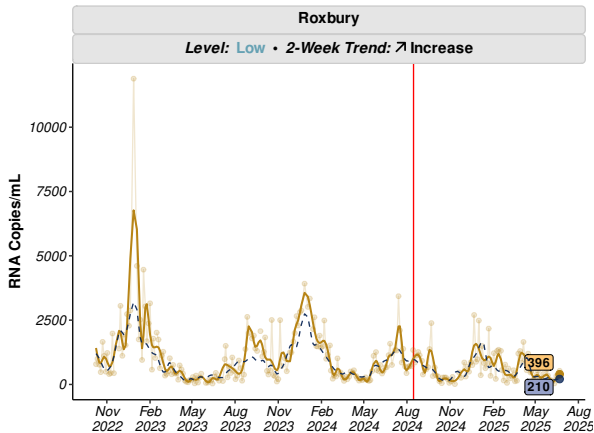


Level: **Low**

- Average value in **RX** over the past week: **396** copies/mL.
- This value is **low** compared to past values and **similar** than the citywide average (**210** copies/mL).

Trend: **↗ Increase**

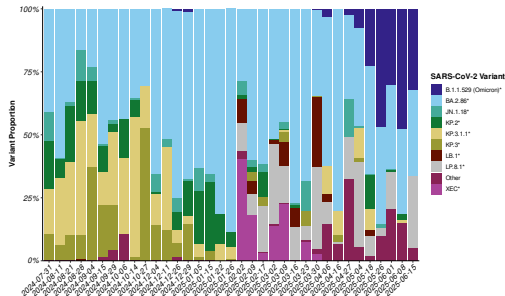
- Over the past two weeks, values in **RX** are **increasing**.
- Change compared to two weeks ago: **+285** copies/mL (**+258%**).



Updated: 30-Jun-2025 | Samples through: 22-Jun-2025 (RX);

See [recommended actions and resources](#) based on levels and trends in this neighborhood.

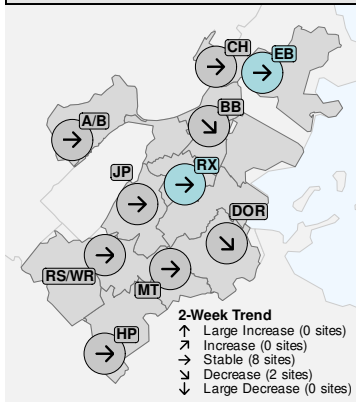
# Percent Variant Lineages (Citywide)



# Influenza Detections in Wastewater



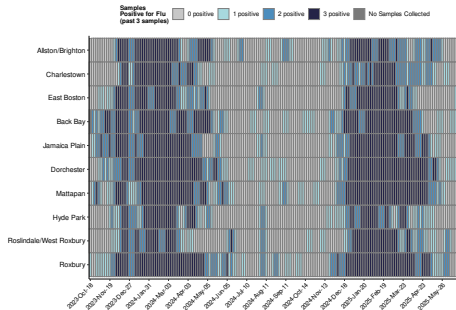
## Influenza Wastewater Detections & Trends (22-Jun-2025)



# Samples Positive for Flu (Past 3 Samples)

8 sites	2 sites	0 sites	0 sites	0 sites
0 positive	1 positive	2 positive	3 positive	No Samples Collected

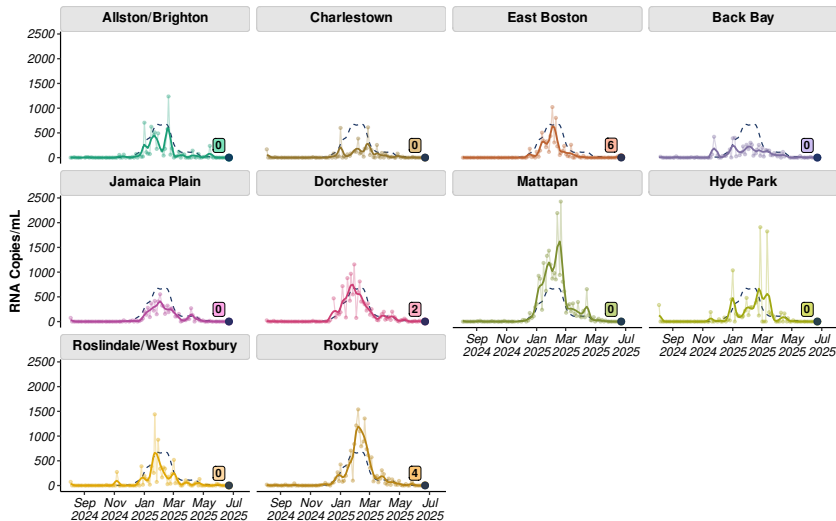
This map depicts the number of times influenza virus was detected in wastewater at the 3 most-recent samples (approximately the past week) at each of the neighborhood sampling locations.



# Influenza Trends in Wastewater by Neighborhood



Influenza Trends in Wastewater



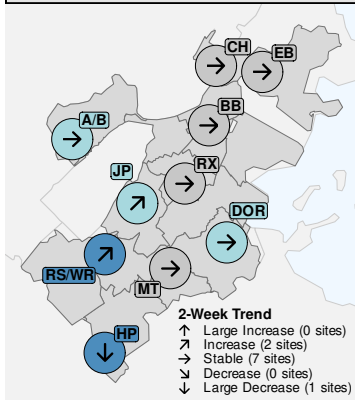
For each neighborhood, colored line and textbox shows the smoothed trend and most recent value in that neighborhood;

The dotted blue line in each panel shows the trend and most recent value across **all Boston sites** weighted by population.

# RSV Detections in Wastewater



## RSV Wastewater Detections & Trends (22-Jun-2025)

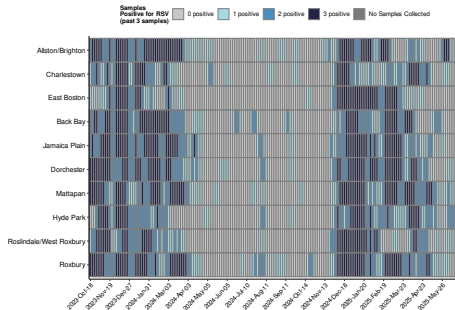


# Samples Positive for RSV (Past 3 Samples)

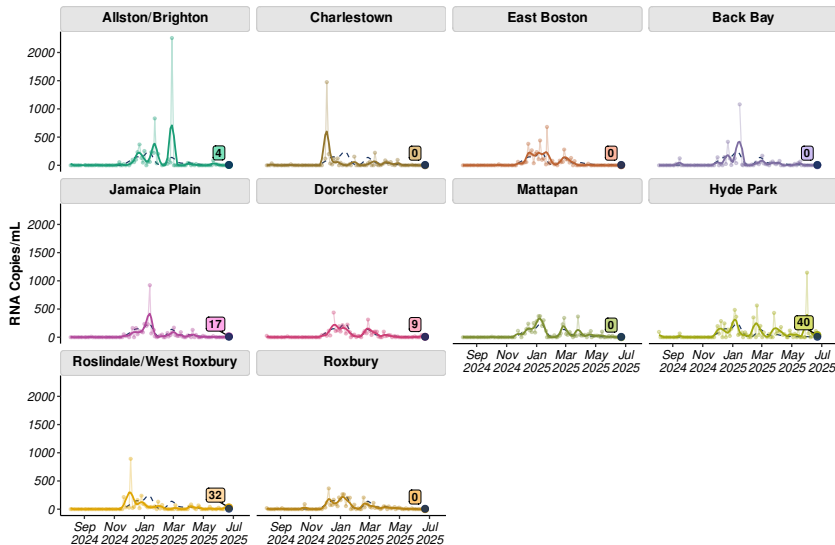
5 sites	3 sites	2 sites	0 sites	0 sites
0 positive	1 positive	2 positive	3 positive	No Samples Collected

RSV = Respiratory Syncytial Virus

This map depicts the number of times RSV was detected in wastewater at the 3 most-recent samples (approximately the past week) at each of the neighborhood sampling locations.



# RSV Trends in Wastewater by Neighborhood



For each neighborhood, colored line and textbox shows the smoothed trend and most recent value in that neighborhood;

The dotted blue line in each panel shows the trend and most recent value across **all Boston sites** weighted by population.

# COVID-19 Wastewater Level and Trend Category Definitions



## Concentration Levels

Concentration Level	Concentration Value (Copies/mL)
Very High	>1,400
High	1,050-1,400
Moderate	700-1,050
Low	350-700
Very Low	≤350

## 2-Week Trend Categories

Trend Category		Trend Value (Copies/mL)
↑	Large Increase	>+500
↗	Increase	+150 to +500
→	Stable	-150 to +150
↘	Decrease	-500 to -150
↓	Large Decrease	≤-500

# Level: **Very High**



Wastewater viral levels in your neighborhood indicate **very high risk** of COVID-19 infection.

Based on this level, BPHC urgently recommends the following practices to prevent COVID-19 in your community:

- Wear a [high-quality mask or respirator](#)
- If you are at [high risk of getting very sick](#), consider limiting non-essential indoor activities in public where you could be exposed.
- If you have close contact with someone at [high risk of getting very sick](#), consider self-testing to detect infection before contact, and consider wearing a high-quality mask when indoors with them
- Stay up-to-date on [vaccinations](#).
- Recognize the [symptoms](#) of COVID-19 and seek testing and possible treatment if you get sick
- Stay home when sick and avoid contact with others who are sick
- Improve [indoor airflow and ventilation](#)
- Wash your hands often and cover coughs and sneezes
- Follow CDC recommendations for [preventing spread](#) if you have COVID-19

## RESOURCES

- Find a [vaccination clinic](#) in your neighborhood
- Pick up a [free at-home test kit](#) in your neighborhood
- Find [treatment](#) for COVID-19 including [free telehealth](#) and [in home treatment](#)
- Call or visit the [Mayor's Health Line](#)
- Learn more about COVID-19 and find additional resources: [COVID-19 in Boston](#)



# Level: High



Wastewater viral levels in your neighborhood indicate **high risk** of COVID-19 infection.

Based on this level, BPHC strongly recommends the following practices to prevent COVID-19 in your community:

- Wear a [high-quality mask or respirator](#)
- If you have close contact with someone at [high risk of getting very sick](#), consider self-testing to detect infection before contact, and consider wearing a high-quality mask when indoors with them
- Stay up-to-date on [vaccinations](#).
- Recognize the [symptoms](#) of COVID-19 and seek testing and possible treatment if you get sick
- Stay home when sick and avoid contact with others who are sick
- Improve [indoor airflow and ventilation](#)
- Wash your hands often and cover coughs and sneezes
- Follow CDC recommendations for [preventing spread](#) if you have COVID-19

## RESOURCES

- Find a [vaccination clinic](#) in your neighborhood
- Pick up a [free at-home test kit](#) in your neighborhood
- Find [treatment](#) for COVID-19 including [free telehealth](#) and [in home treatment](#)
- Call or visit the [Mayor's Health Line](#)
- Learn more about COVID-19 and find additional resources: [COVID-19 in Boston](#)

## Level: **Moderate**



Wastewater viral levels in your neighborhood indicate **moderate risk** of COVID-19 infection.

Based on this level, BPHC recommends the following practices to prevent COVID-19 in your community:

- If you are at [high risk of getting very sick](#), wear a [high-quality mask or respirator](#) in public indoor spaces
- If you have close contact with someone at [high risk of getting very sick](#), consider self-testing to detect infection before contact, and consider wearing a high-quality mask when indoors with them
- Stay up-to-date on [vaccinations](#).
- Recognize the [symptoms](#) of COVID-19 and seek testing and possible treatment if you get sick
- Stay home when sick and avoid contact with others who are sick
- Improve [indoor airflow and ventilation](#)
- Wash your hands often and cover coughs and sneezes
- Follow CDC recommendations for [preventing spread](#) if you have COVID-19

## RESOURCES

- Find a [vaccination clinic](#) in your neighborhood
- Pick up a [free at-home test kit](#) in your neighborhood
- Find [treatment](#) for COVID-19 including [free telehealth](#) and [in home treatment](#)
- Call or visit the [Mayor's Health Line](#)
- Learn more about COVID-19 and find additional resources: [COVID-19 in Boston](#)



Wastewater viral levels in your neighborhood indicate **low risk** of COVID-19 infection.

Based on this level, BPHC recommends the following practices to prevent COVID-19 in your community:

- **Continue to monitor wastewater levels and trends**
- Stay up-to-date on [vaccinations](#).
- Recognize the [symptoms](#) of COVID-19 and seek testing and possible treatment if you get sick
- Stay home when sick and avoid contact with others who are sick
- Improve [indoor airflow and ventilation](#)
- Wash your hands often and cover coughs and sneezes
- Follow CDC recommendations for [preventing spread](#) if you have COVID-19

## RESOURCES

- Find a [vaccination clinic](#) in your neighborhood
- Pick up a [free at-home test kit](#) in your neighborhood
- Find [treatment](#) for COVID-19 including [free telehealth](#) and [in home treatment](#)
- Call or visit the [Mayor's Health Line](#)
- Learn more about COVID-19 and find additional resources: [COVID-19 in Boston](#)

# Level: **Very Low**



Wastewater viral levels in your neighborhood indicate **very low risk** of COVID-19 infection.

Based on this level, BPHC recommends the following practices to prevent COVID-19 in your community:

- **Continue to monitor wastewater levels and trends**
- Stay up-to-date on [vaccinations](#).
- Recognize the [symptoms](#) of COVID-19 and seek testing and possible treatment if you get sick
- Stay home when sick and avoid contact with others who are sick
- Improve [indoor airflow and ventilation](#)
- Wash your hands often and cover coughs and sneezes
- Follow CDC recommendations for [preventing spread](#) if you have COVID-19

## RESOURCES

- Find a [vaccination clinic](#) in your neighborhood
- Pick up a [free at-home test kit](#) in your neighborhood
- Find [treatment](#) for COVID-19 including [free telehealth](#) and [in home treatment](#)
- Call or visit the [Mayor's Health Line](#)
- Learn more about COVID-19 and find additional resources: [COVID-19 in Boston](#)