

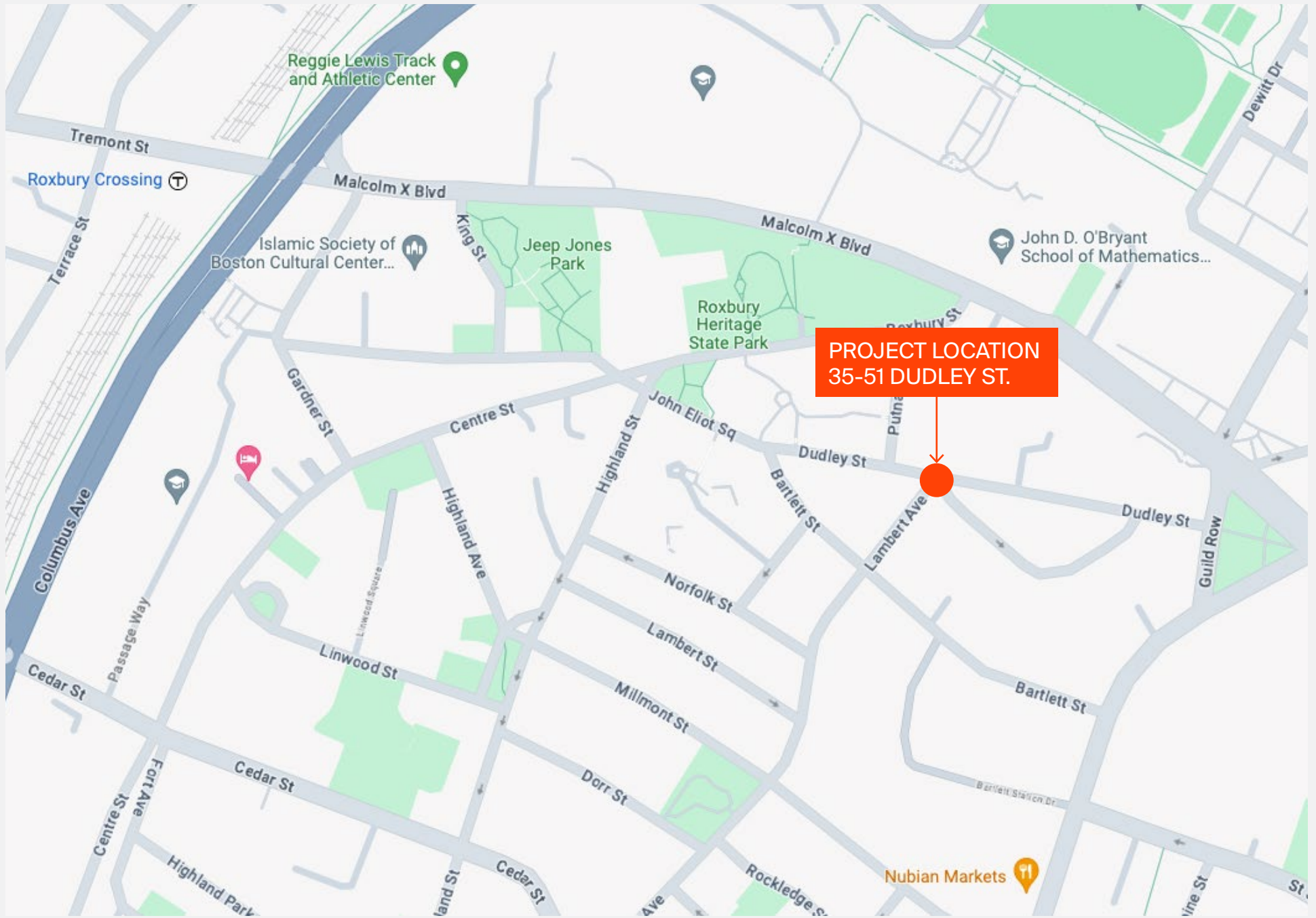
# DUDLEY KENILWORTH POCKET PARK

HPACD PRESENTATION

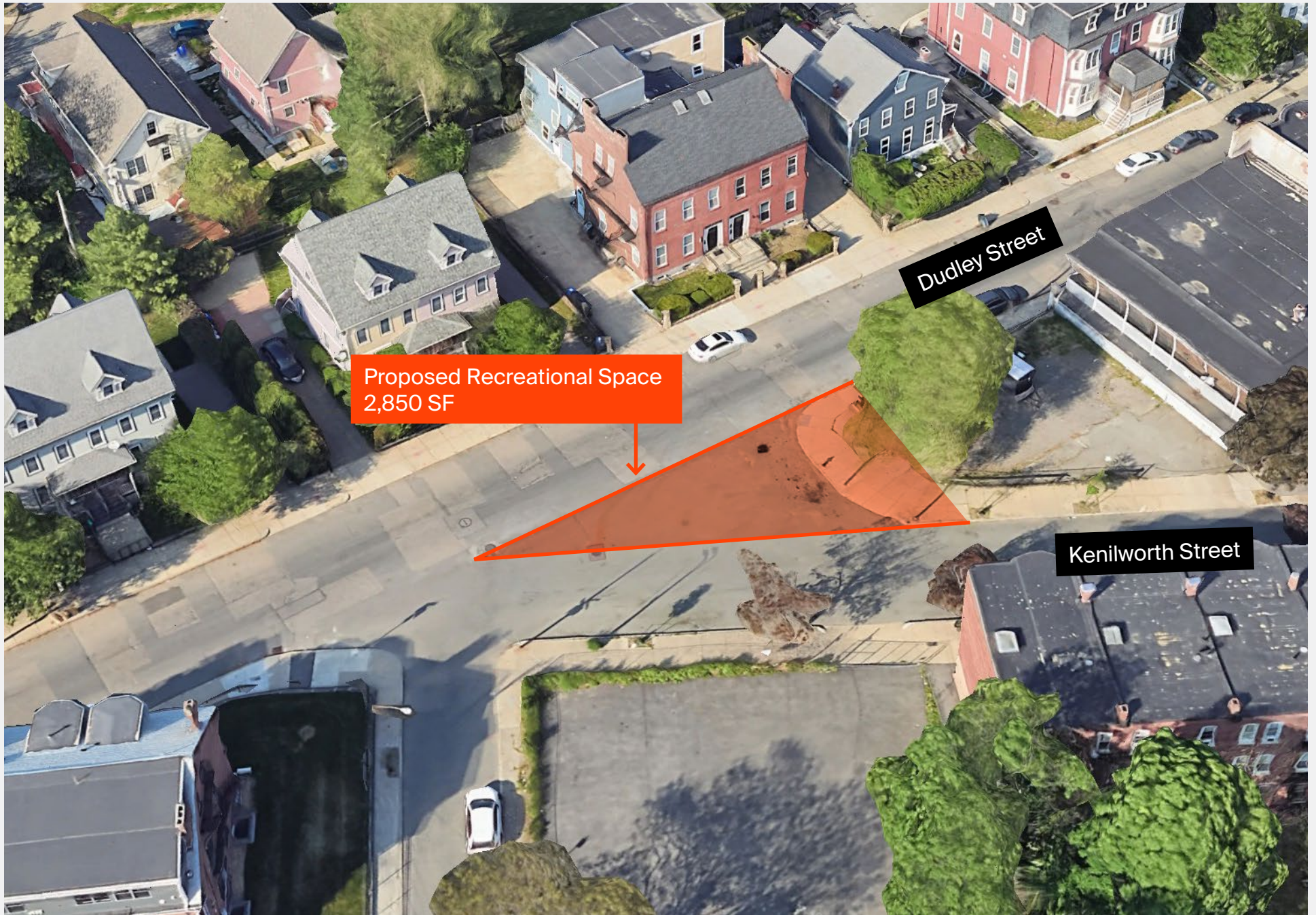
06/26/2025

## **SEEKING APPROVAL:**

- 1. CONCEPT OF THE POCKET PARK**
- 2. CONCEPT OF THE COMMUNITY ART POST**



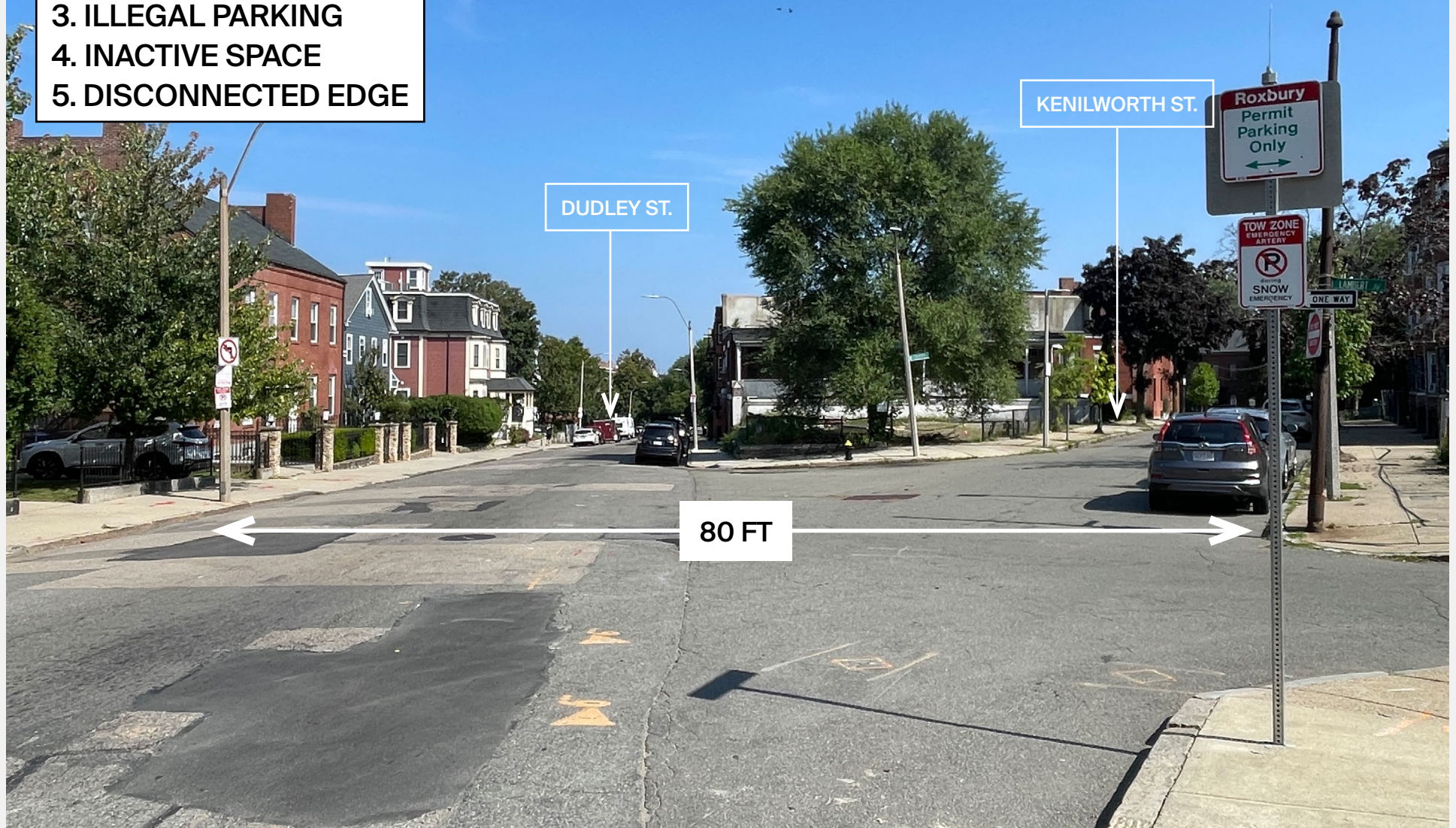






## SITE CHALLENGES

1. UNSAFE CROSSING
2. POOR ACCESS
3. ILLEGAL PARKING
4. INACTIVE SPACE
5. DISCONNECTED EDGE



**HONOR THE  
NEIGHBORHOOD'S HISTORY  
WHILE CREATING SPACE FOR  
FUTURE CREATIVITY**



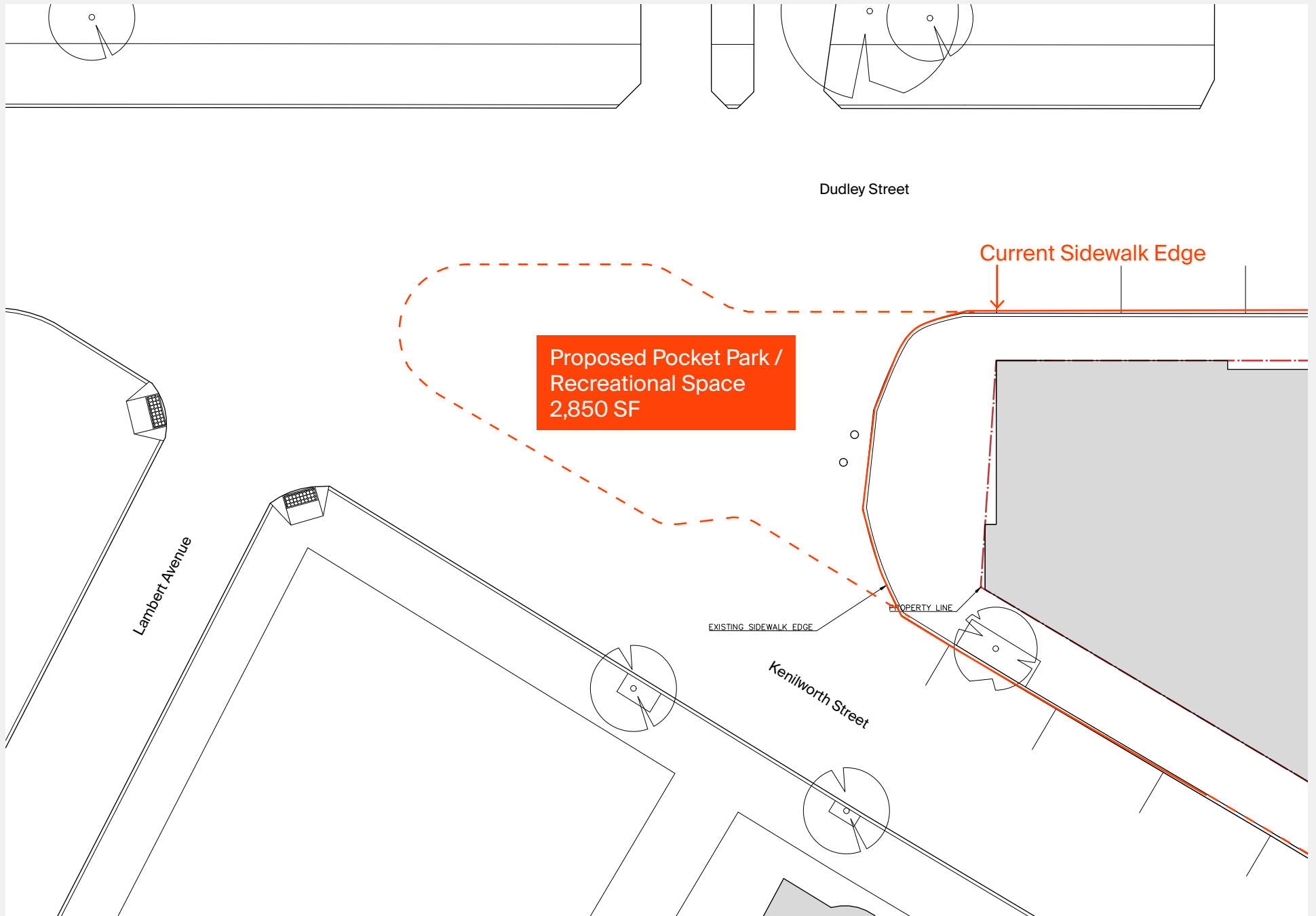
**KENILWORTH POCKET PARK**

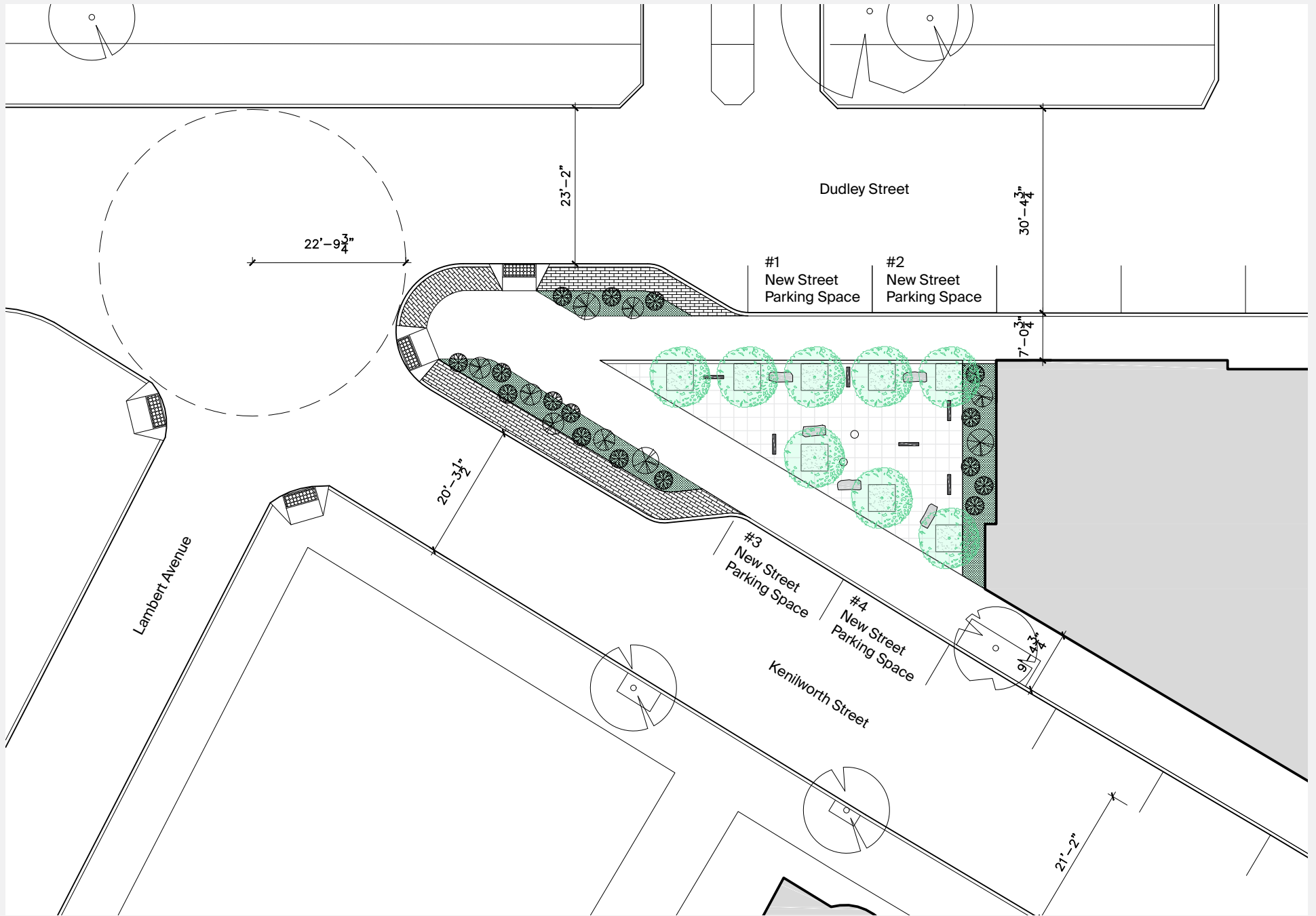
**SAFER, MORE WALKABLE  
INTERSECTION**



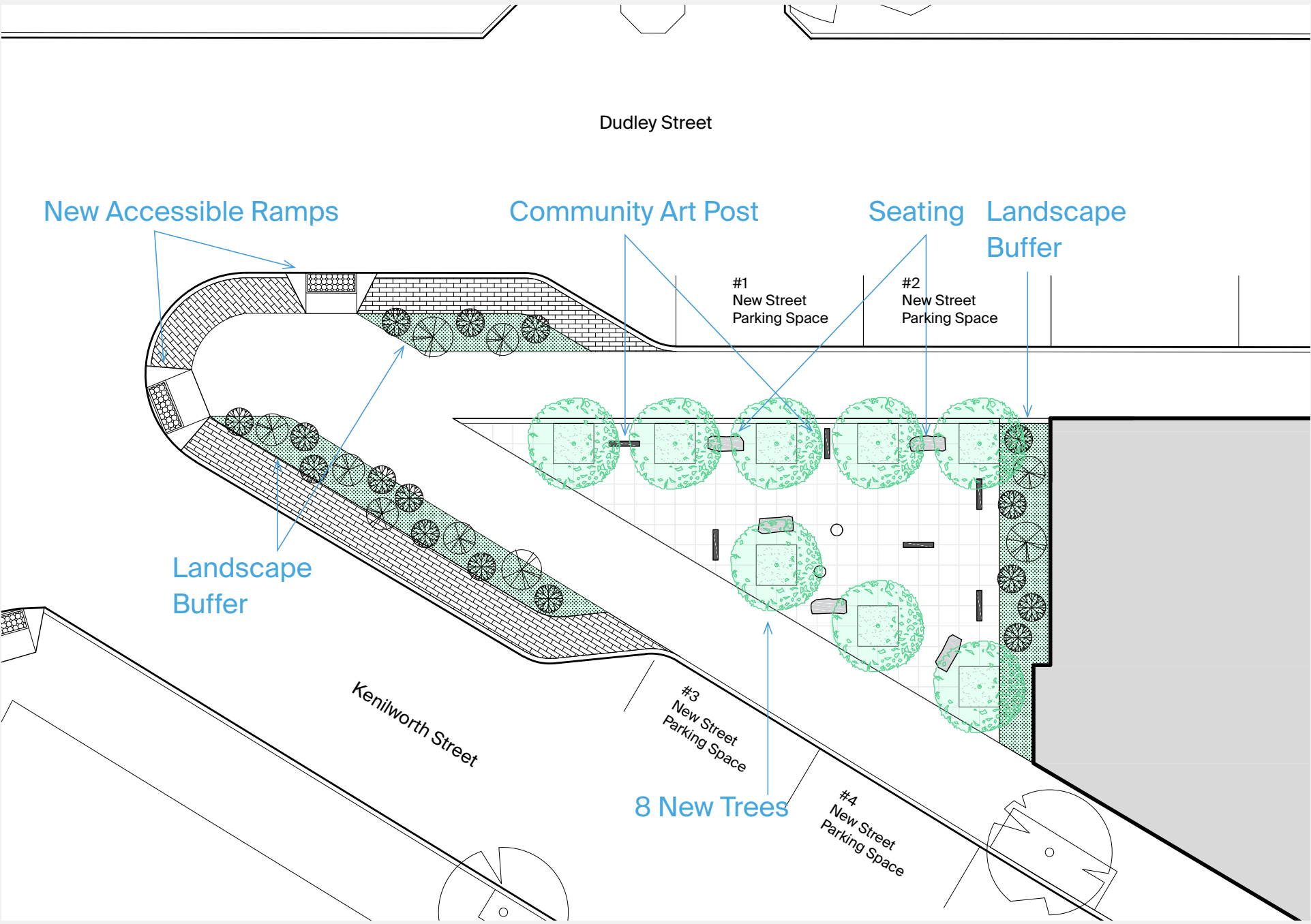
**COMFORTABLE SHADED  
PLACE TO SIT & RELAX**















VIEW FROM KENILWORTH STREET

DUDLEY KENILWORTH  
POCKET PARK

35-51 DUDLEY ST. BOSTON





**VIEW TOWARDS INTERSECTION**

DUDLEY KENILWORTH  
POCKET PARK

35-51 DUDLEY ST. BOSTON





## TREE

Columnar Red Maple

## LANDSCAPE

Panicum Virgatum 'Northwind'  
 Panicum virgatum 'Shenandoah'  
 Miscanthus sinensis 'Morning Light'  
 Miscanthus sinensis 'Adagio'  
 Baptisia australis (False Indigo)

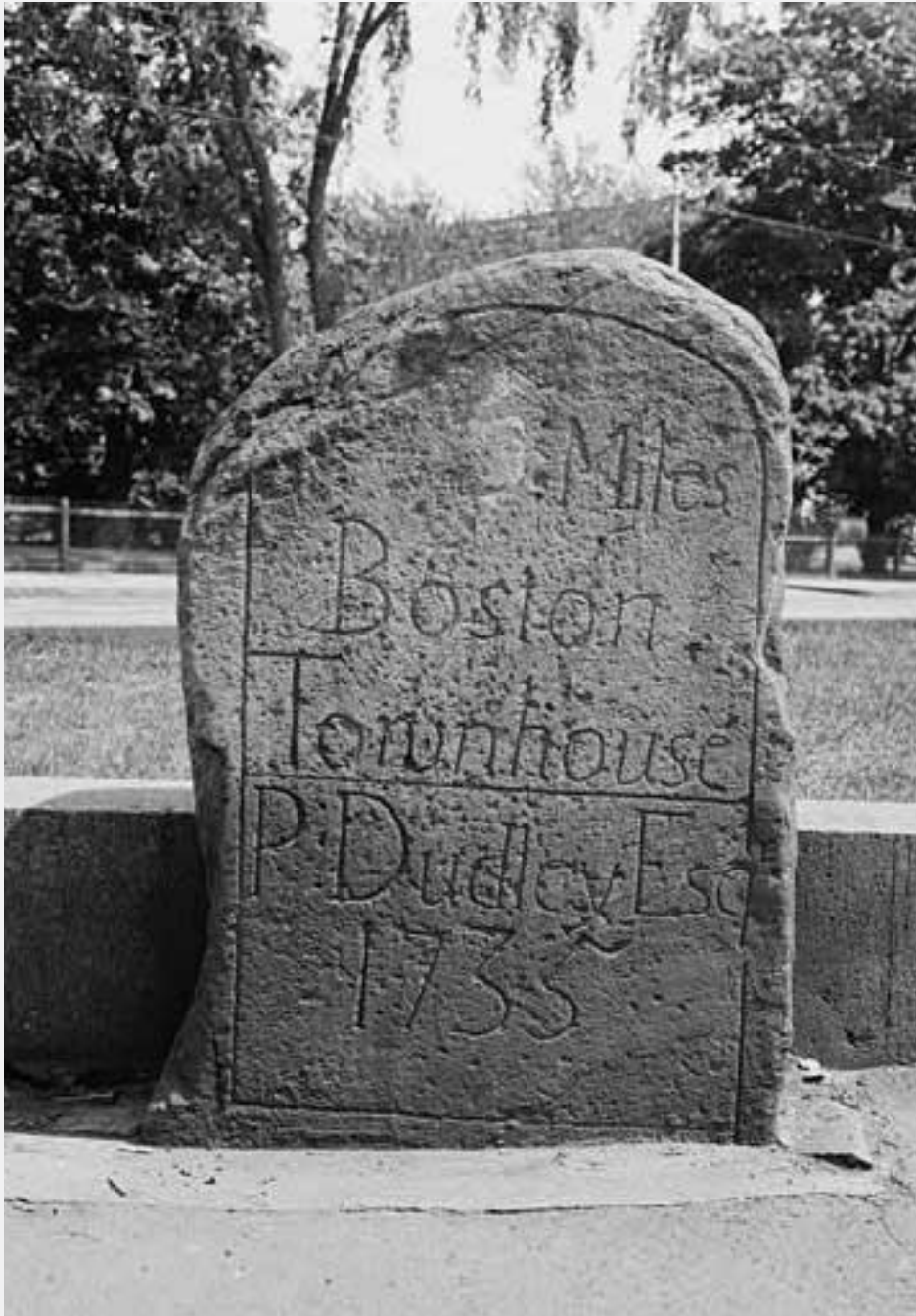




**PAVEMENT MATERIAL**  
Bluestone or Granite Paving Slabs  
(Regional Material)

**SEATING**  
Quarried Granite Stone Seats





## BOSTON COLONIAL MILESTONE

A historic system of wayfinding markers placed during the 18th century. They are some of the oldest surviving road markers in the United States.

Powerful symbols of **place, movement, and memory**

Roxbury, where these stones are located, was once a key pathway between Boston and its outlying towns, and this infrastructure directly connects to **mobility, agency, and visibility**.



# Copper Collective

Copper Collective cultivates an equitable creative ecosystem that empowers Boston's BIPOC communities through art, education, and storytelling. We connect people, places, and ideas to foster public art, civic learning, and shared narratives. Our goal is to spark community-led transformation where sustainability, creativity, and empowerment thrive.



# APPENDIX

