

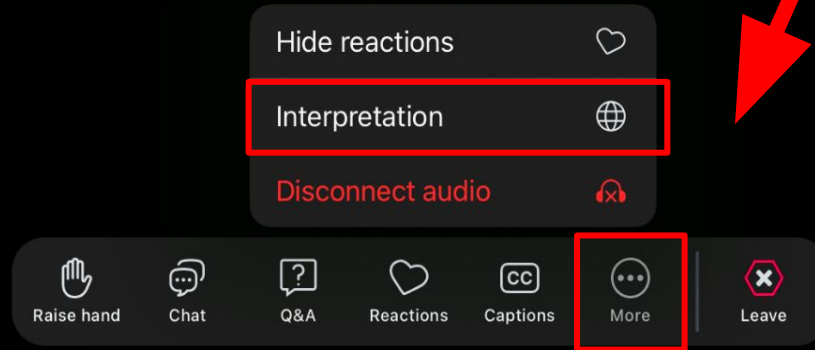
ATTENDEE/PARTICIPANT VIEW

SETUP **BEFORE** WEBINAR OR MEETING

To ensure the best possible experience, please update to the latest version of Zoom [at this link](#).

SETUP **DURING** WEBINAR OR MEETING

Look for the **More** (three dots) icon at the bottom of your screen. Select Interpretation (🌐) icon.





SARAH ROBERTS ELEMENTARY SCHOOL

Construction Update and Pedestrian Safety Meeting

Thursday, May 29, 2025



Mayor Michelle Wu

 **BOSTON PUBLIC SCHOOLS**

 **J&J CONTRACTORS, INC.**



City of Boston
Public Facilities



CITY OF BOSTON

Public Facilities Team

DION IRISH *Chief of Operations*

CARLETON JONES *Executive Director*

ROHN MACNULTY *Deputy Director*

ELLEN MCDONOUGH *Chief of Staff*

MARQUIS MECA *Assistant Director*

THOMAS KAZMOUSKI *Project Manager*

MICHAEL BUCKLEY *Clerk of the Works*

CHRISTIAN HOWELL *Clerk of the Works*



CITY OF BOSTON
Streets Team

JOHN MONACELLI, *Principal Transportation Engineer*

LYDIA HAUSLE, *Capital Projects Design Director*



BOSTON PUBLIC SCHOOLS

DELAVERN STANISLAUS *Chief of Capital Planning*

SARAH KING *Deputy Chief of Capital Planning*

SUSANA HERNANDEZ MORGAN *Executive
Director of Operations Implementation*

KATHERINE SANTIAGO *Senior Project Manager*

DAN ROSENGARD, *Executive Director of BPS
Transportation*

AGENDA

- School Building Construction Update, Exterior & Interior Views (City of Boston Public Facilities Department)
- Sarah Roberts Site Plan and Updated Circulation Plan (City of Boston Public Facilities Department)
- Arrival and Dismissal School Operations (BPS Capital Planning)
- Pedestrian Safety at Crosswalks and Surrounding Streets (City of Boston Streets Team)





EXTERIOR

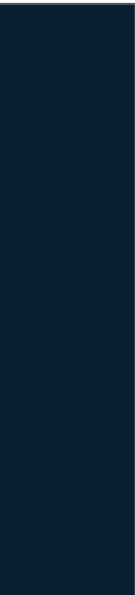
New Entry Lobby and Vestibule construction at Cummins Highway.





EXTERIOR

New window installations, Courtyard and North side





EXTERIOR

Courtyard site work, demo and prep





EXTERIOR

New site retaining wall at North side and underground site work adjacent to Sycamore St.





EXTERIOR

New canopy roof at
Hawthorne side
parking lot





INTERIOR

Classroom wood strip floor prep,
ceiling grid install along with
casework

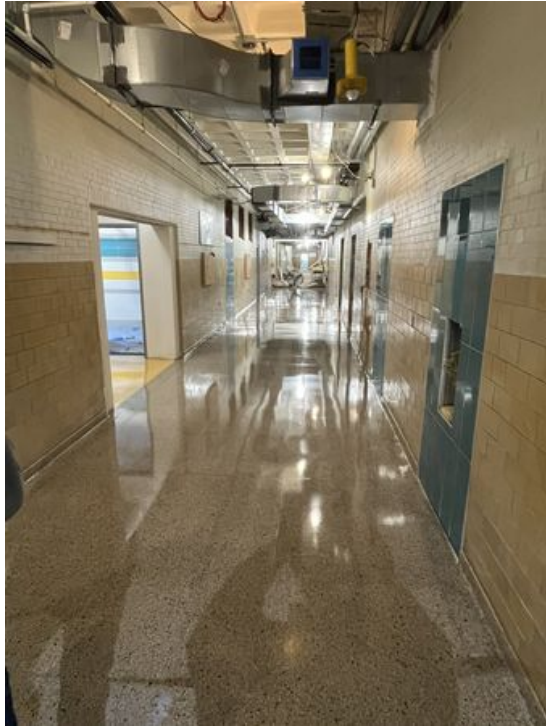




INTERIOR

Classroom floor
and wall finish,
casework,
windows and
ceiling
installation

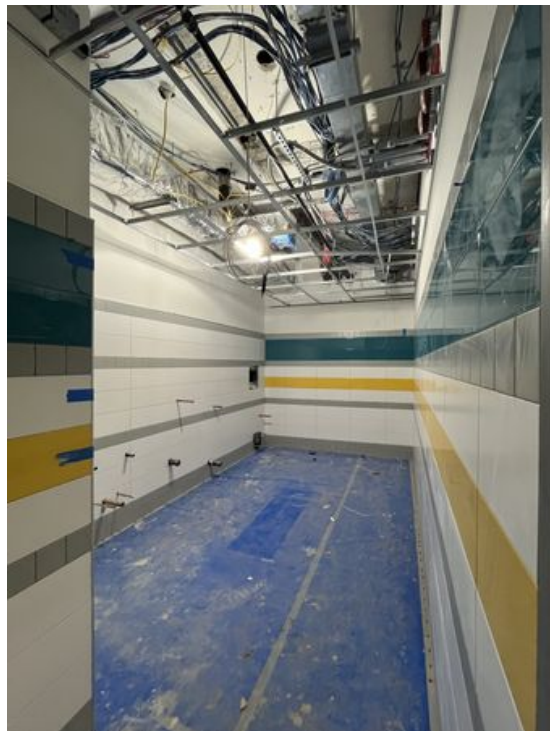




INTERIOR

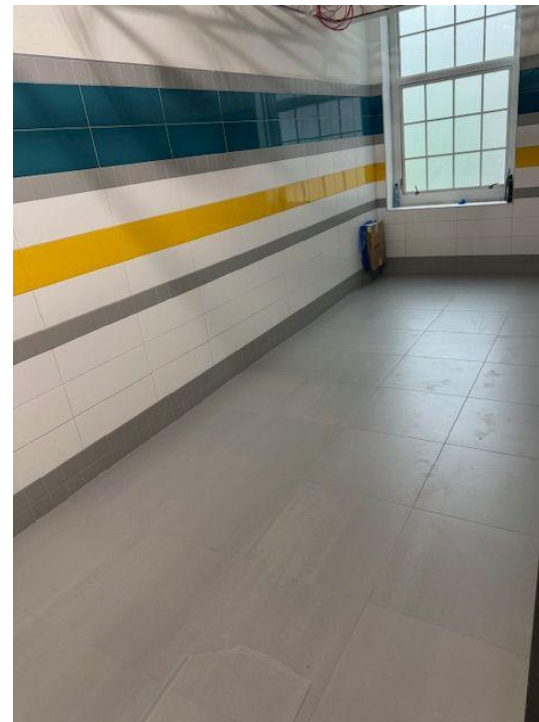
Corridor terrazzo floor refinishing





INTERIOR

New multi-user
toilet room wall tile





INTERIOR

Auditorium ceiling grid installations, new paint color scheme and windows



PROJECT TIMELINE

JUNE 2025

Continuing construction, site work in courtyard, parking lots

AUGUST 2025

Substantial Completion by mid to late August

JULY 2025

*FF&E/Tech Deliveries
Finalization of interior finishes*

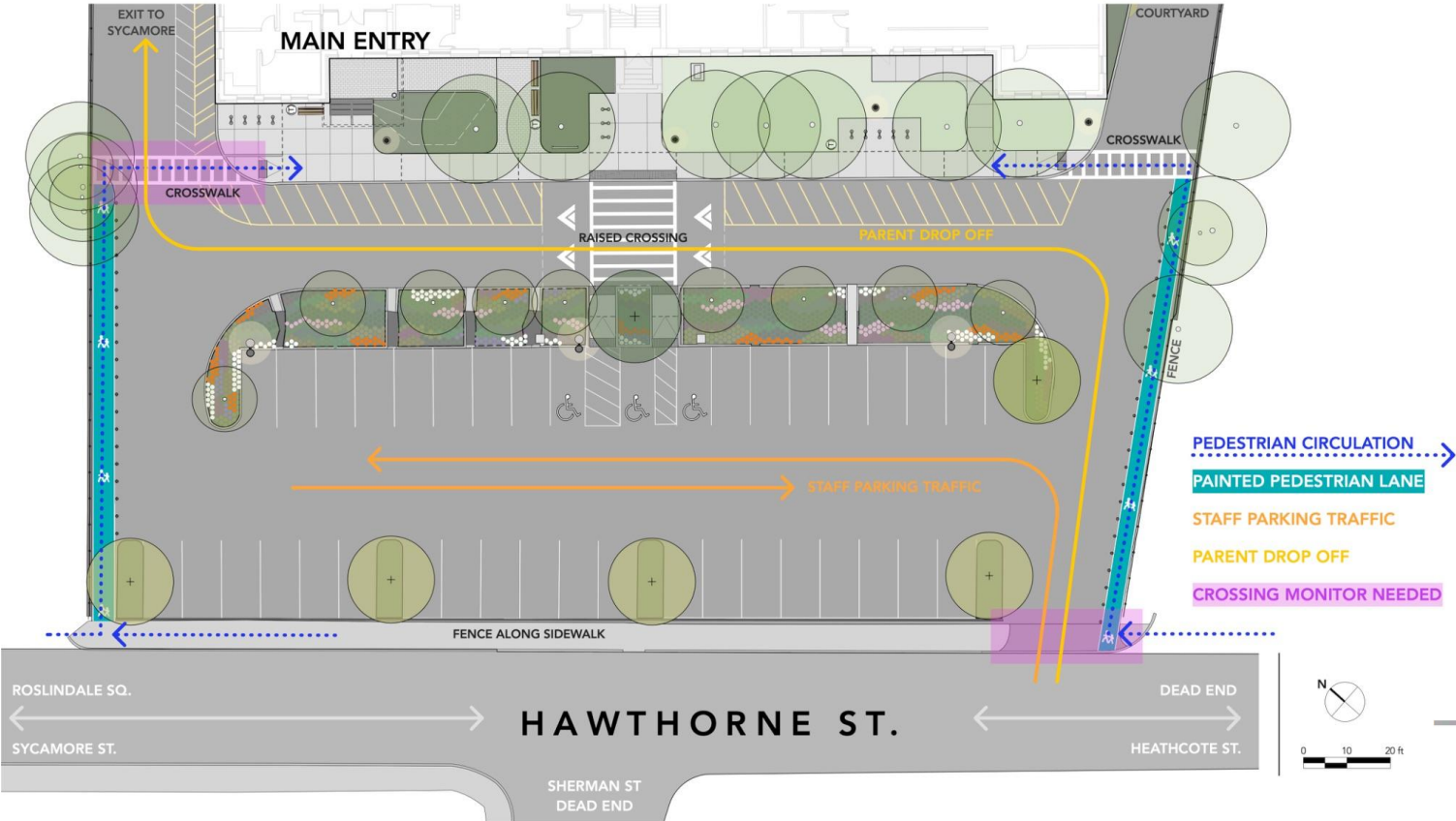
SEPTEMBER 2025

School Opening and punch list work off hours

SARAH ROBERTS SITE PLAN



HAWTHORNE STREET UPDATED CIRCULATION PLAN



CROWI
COTTR
LANDSCAPE ARCHT.



Mayor Michelle Wu

BOSTON PUBLIC SCHOOLS

J&J CONTRACTORS, INC.



City of Boston
Public Facilities

HAWTHORNE STREET CIRCULATION

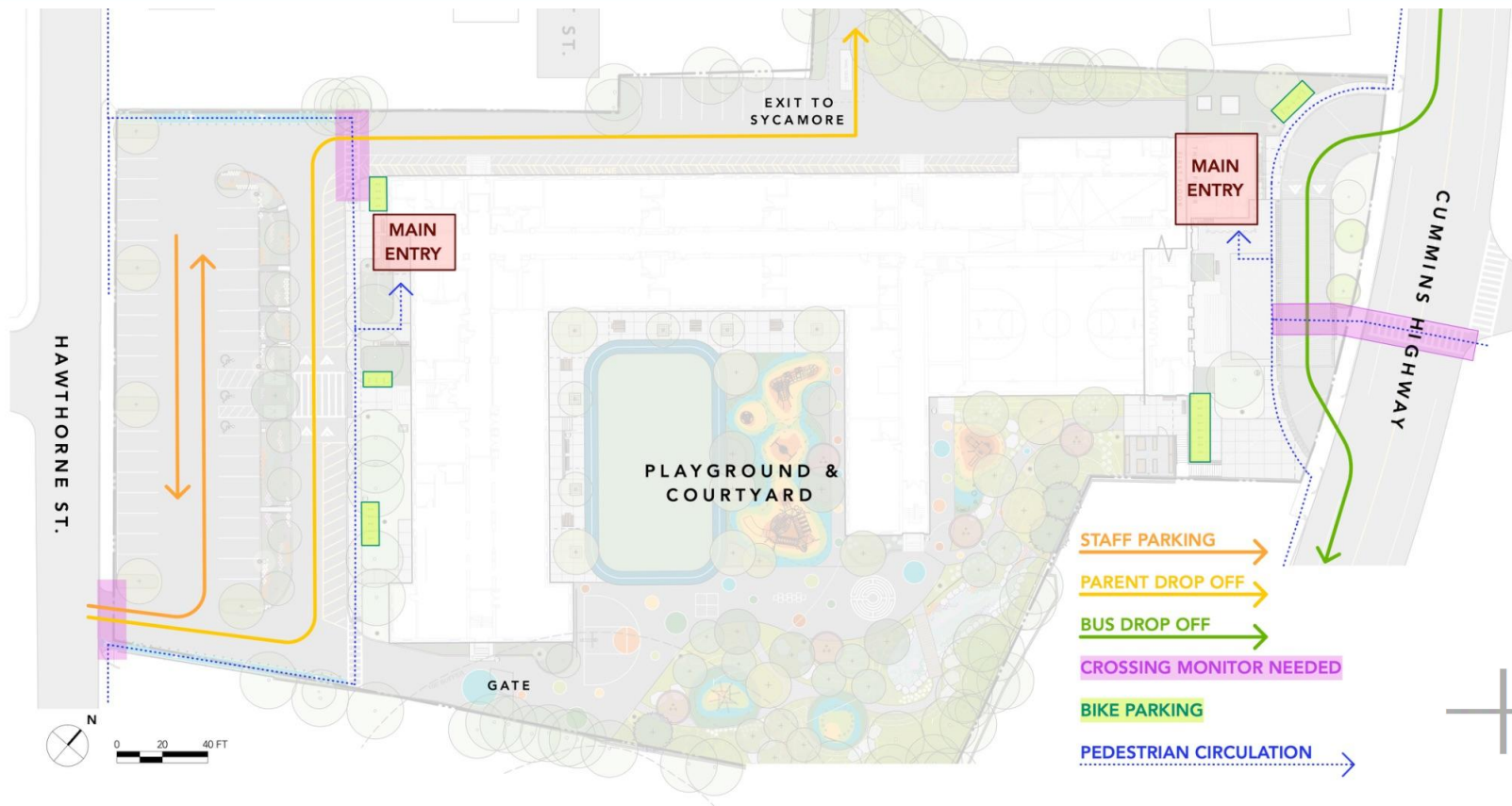


MATERIALS

Painted pedestrian lanes with flexible bollards follow the North & South property lines and connect to the Hawthorne entry sidewalk



SARAH ROBERTS SITE CIRCULATION



SARAH ROBERTS ARRIVAL AND DISMISSAL

□ ARRIVAL/DISMISSAL

- Hours:
 - Arrival: 9:15 - 9:30 AM
 - Dismissal: 4:15 - 4:30 PM
- School Leaders are considering a “Kiss and Ride” protocol for arrival and dismissal.
 - To allow interested parents with vehicles to pick-up and drop-off scholars by the Hawthorne St. school entrance and then exit via Sycamore St.
- Parents may walk over with their child or park in the neighborhood and walk over instead of doing “Kiss and Ride.”
- We aim to do “Kiss and Ride” in a fast and efficient way where parents utilize it versus clogging up the neighborhood parking or double parking.
- Parents will not be able to park in the school parking lot during arrival and dismissal.

□ BEFORE SCHOOL AND AFTER CARE PROGRAM

- 150- 200 students expected to sign-up.
 - These students will already be onsite during arrival and will remain after dismissal.
- New students will receive the program application in the coming weeks.



SARAH ROBERTS MODES OF TRANSPORTATION

☐ **BUSES**

- All buses will drop-off and pick-up bus students via the horseshoe driveway on Cummins Highway.
- Students may use the side stairs to access the school turf area and school cafeteria.

☐ **WALKERS**

- Students walking home will be dismissed from the school turf area.
- Two pedestrian walkways have been added to the school parking lot for student safety.

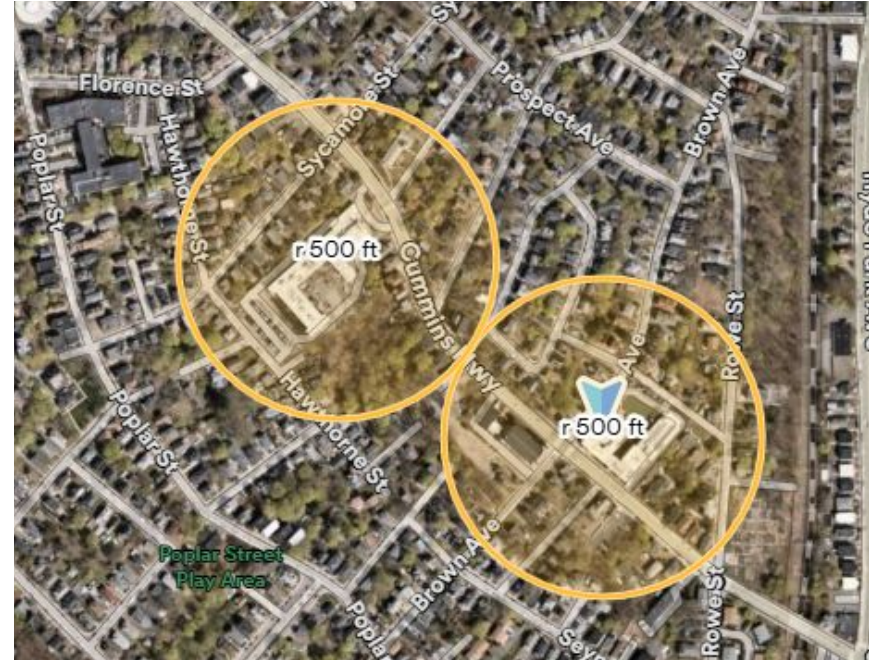
☐ **BIKE RIDERS**

- Bikers will need to walk their bikes to the bike racks using the walkways on Hawthorne Street or the sidewalk on Cummins highway, once they arrive at the school.
- There are bike racks available on Hawthorne St and Cummins Highway.
- There is also a bike room inside by the Hawthorne St. Entrance.



SCHOOL ZONE ON CUMMINS HIGHWAY

- BTD Engineering is evaluating the request for a school zone that encompasses both the Brooke Charter School and the Sarah Roberts School.
- Streets' Safe Routes to School Planner will reach out to Brooke Charter School to discuss it



CUMMINS HIGHWAY AT SHELDON ST CROSSWALK

Existing Condition

- 44-foot crosswalk
- People cross both directions of vehicle traffic at one time
- People park close to the crosswalk, which hinders visibility
- Speeds on Cummins Highway reduce reaction time of drivers approaching the crosswalk

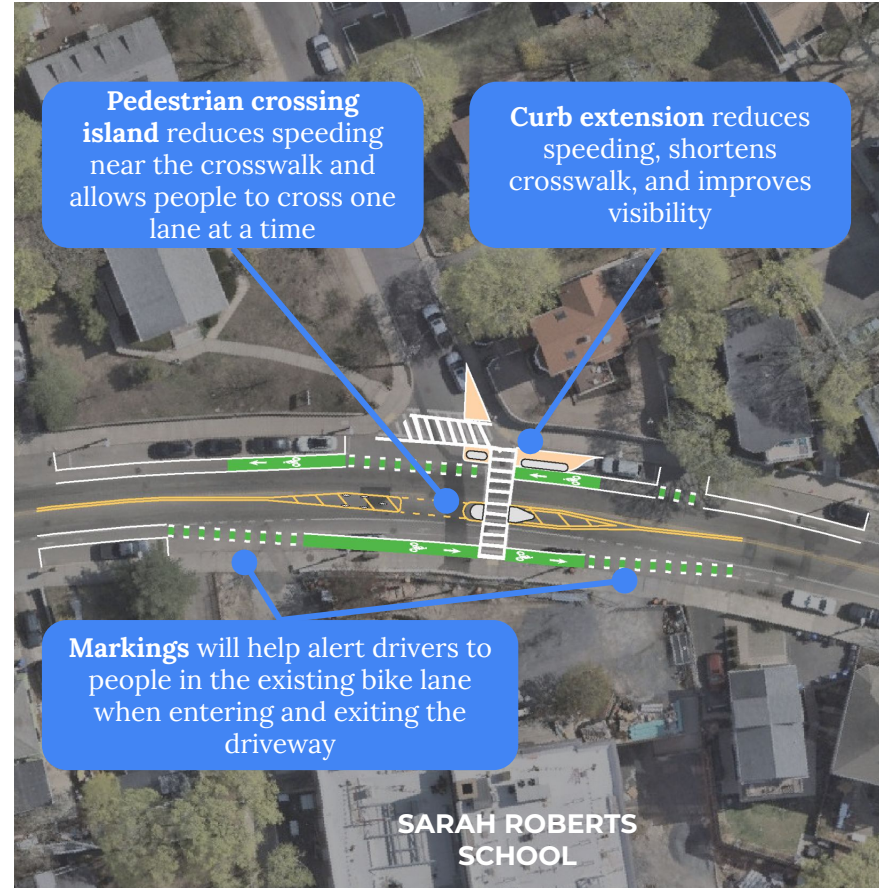


CUMMINS HIGHWAY AT SHELDON ST CROSSWALK

Proposed Design Changes

To address safety of families crossing Cummins Highway at the existing crosswalk at Sheldon St we can:

- Extend the sidewalk at Sheldon St to create **better visibility** of the crosswalk and reduce total crossing distance
- Provide a pedestrian refuge island in the middle of the street to **reduce vehicle speeds** near the crosswalk and allow pedestrians to cross one lane at a time
- Restrict parking near the crosswalk to **make sure drivers can see** people before they enter the crosswalk
- Include high-visibility pedestrian warning signage ahead of and at the crosswalk to **alert drivers** to the presence of people crossing the street



Pedestrian Safety at Crosswalks and Surrounding Streets



Additional Crosswalks in the Surrounding Neighborhood

- As part of our Citywide ramp reconstruction program, there will be a future opportunity to address accessibility challenges at the existing crosswalk across Sherwood.
- BTD is evaluating the requested locations for new crosswalks, if appropriate they can be added to PWD ramp program
- Sycamore and Cummins - BTD will add the accessible pedestrian signals and evaluate crossing timing

Traffic speed on Cummins Highway

- The Streets Cabinet is currently exploring design solutions to slow vehicles, protect pedestrians, and improve visibility at the intersection of Cummins Highway and Sheldon St where there is an existing crosswalk.
- Design interventions such as pedestrian refuge islands, intersection daylighting (clear corners), and associated signage are all being evaluated.



Cornuba St. Cuthrough to Hawthorne St.

- This is not a public way, so the City is unable to pave or otherwise alter it.



QUESTIONS AND FEEDBACK

Please add your questions to the [Q&A document](#).

Future questions and feedback may be directed to:

capitalplanning@bostonpublicschools.org

BPS Capital Planning Team





Thank you ALL for your commitment and collaboration. Together, we are building a stronger, unified school community for students and families.