



9 FOLLEN STREET

5/19/25

SHEET LIST

- A0.1 Reference
- A0.2 Existing Photographs
- A0.3 Existing Photographs
- A0.4 Basement Demolition and Proposed Plans
- A0.5 First Floor Demolition and Proposed Plans
- A0.6 Window Details
- A0.7 Window Details
- A0.8 Fence Details

SCOPE OF WORK

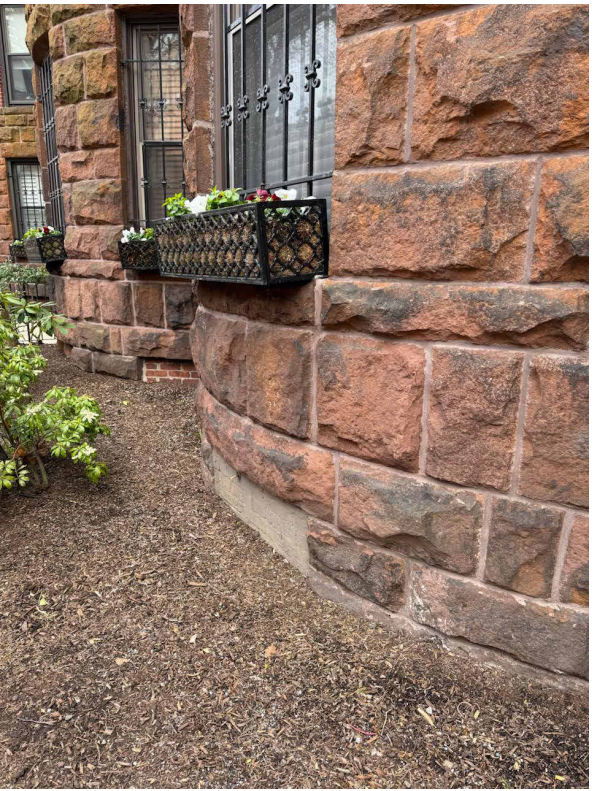
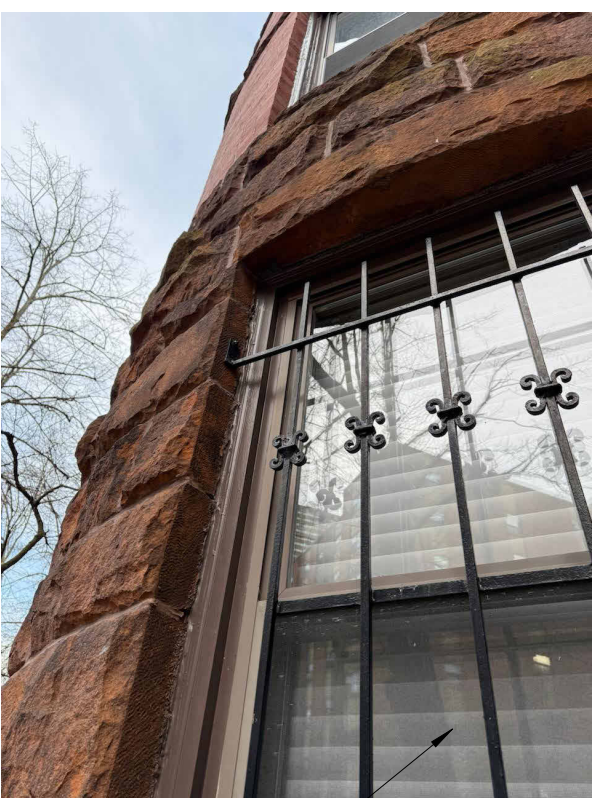
- RESTORE WINDOWS IN 3 BRICK-IN WINDOW OPENINGS @BOWFRONT, GARDEN LEVEL
- REPLACE WOOD FENCE WITH BRICK WALL @REAR PATIO
- REPLACE ALL REAR WINDOWS IN GARDEN UNIT



INSTALL NEW WINDOWS IN WELLS IN GARDEN LEVEL BRICKED-IN OPENINGS (QTY 3)



EXISTING 1ST FLOOR WINDOWS SHOWN FOR COLOR ONLY



9 Follen Street
Existing Photographs



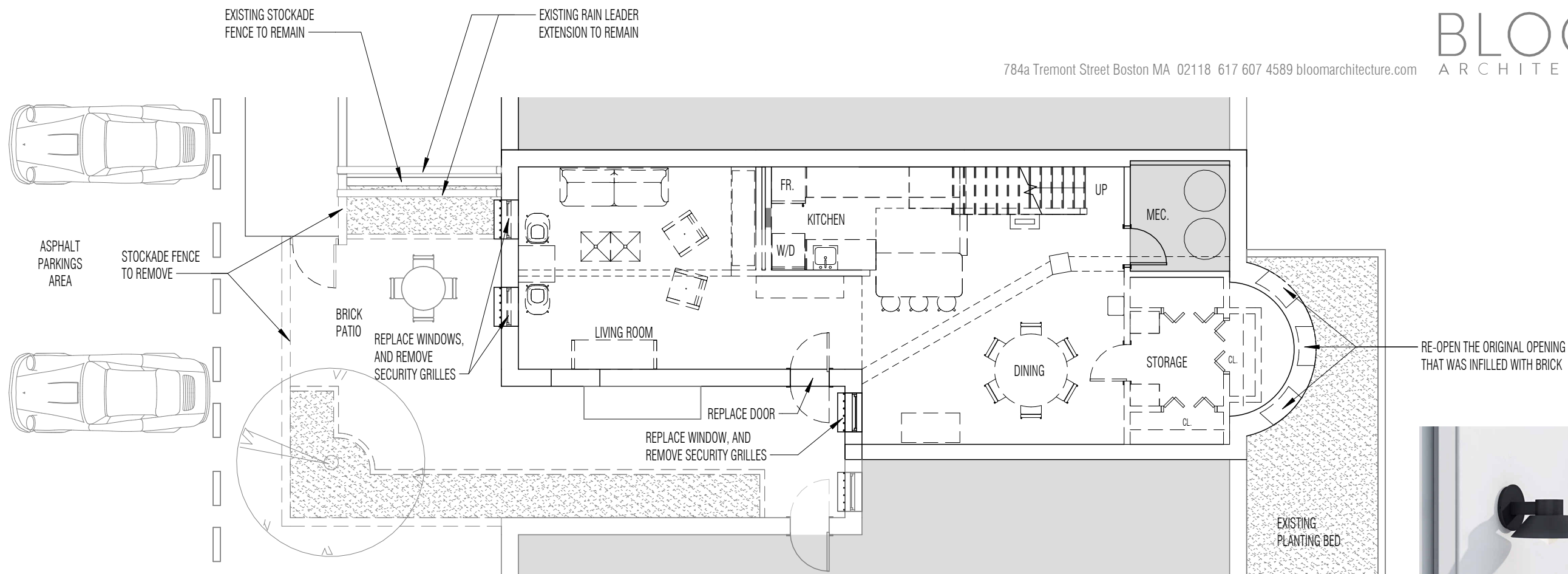
VIEW FROM SOUTHWEST CORRIDOR PARK



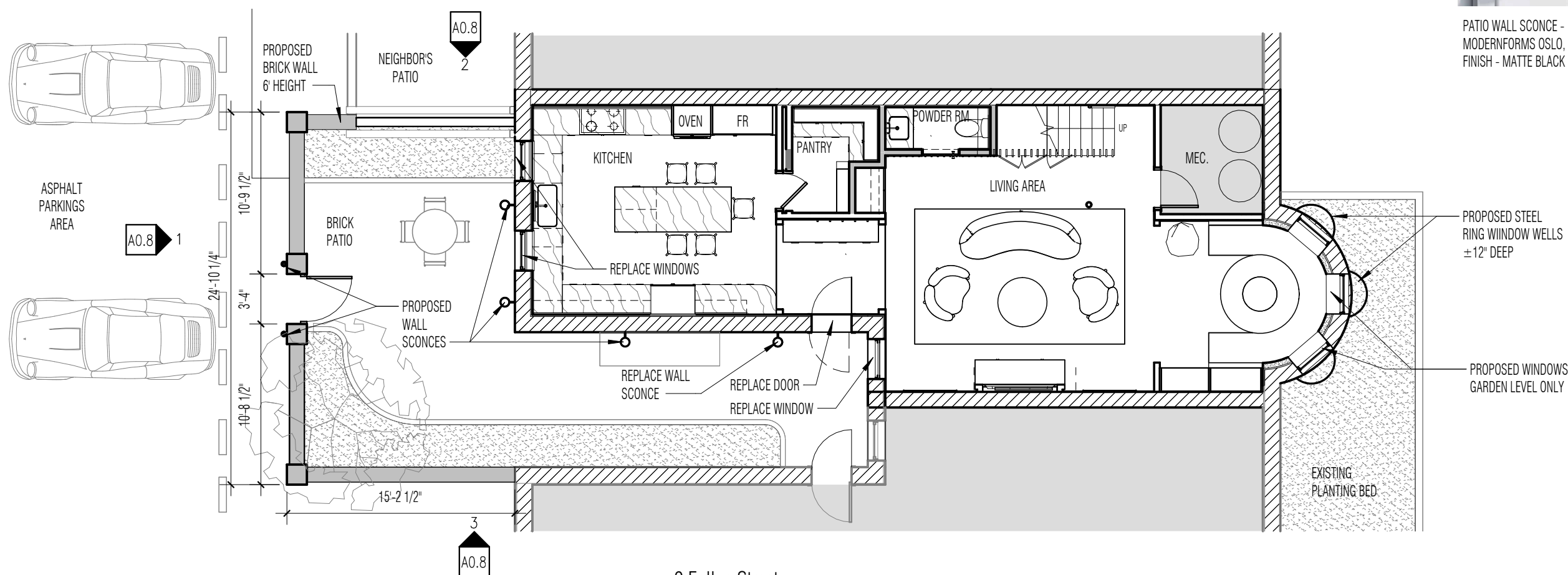
9 FOLLEN



9 Follen Street
Existing Photographs

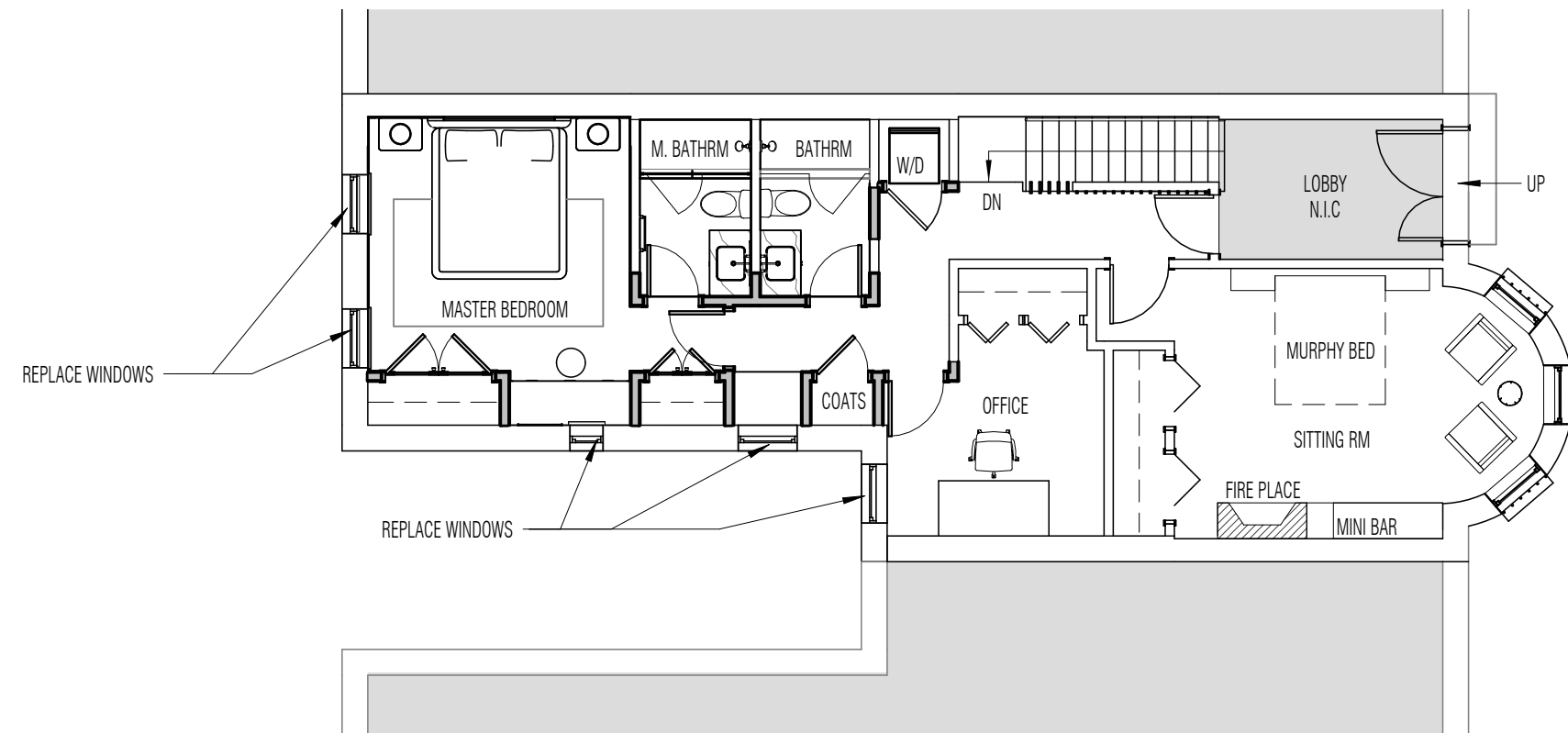
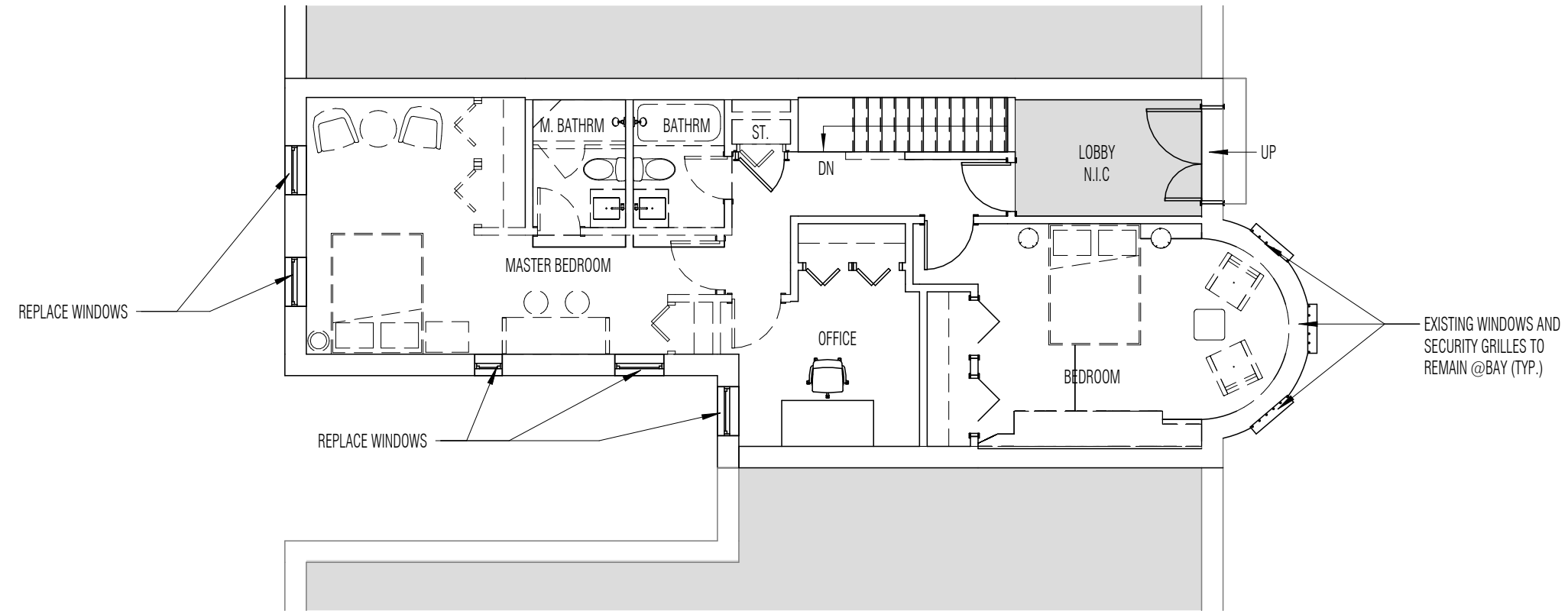


PATIO WALL SCONCE -
MODERNFORMS OSLO,
FINISH - MATTE BLACK

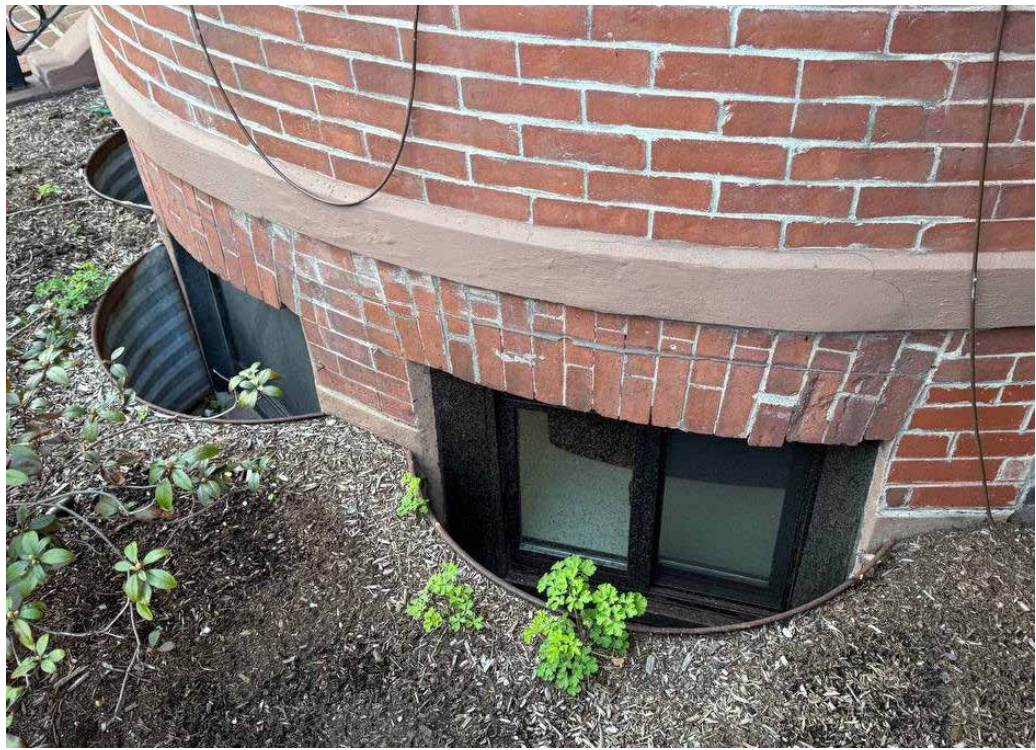


9 Follen Street
Basement Existing and Proposed Plan

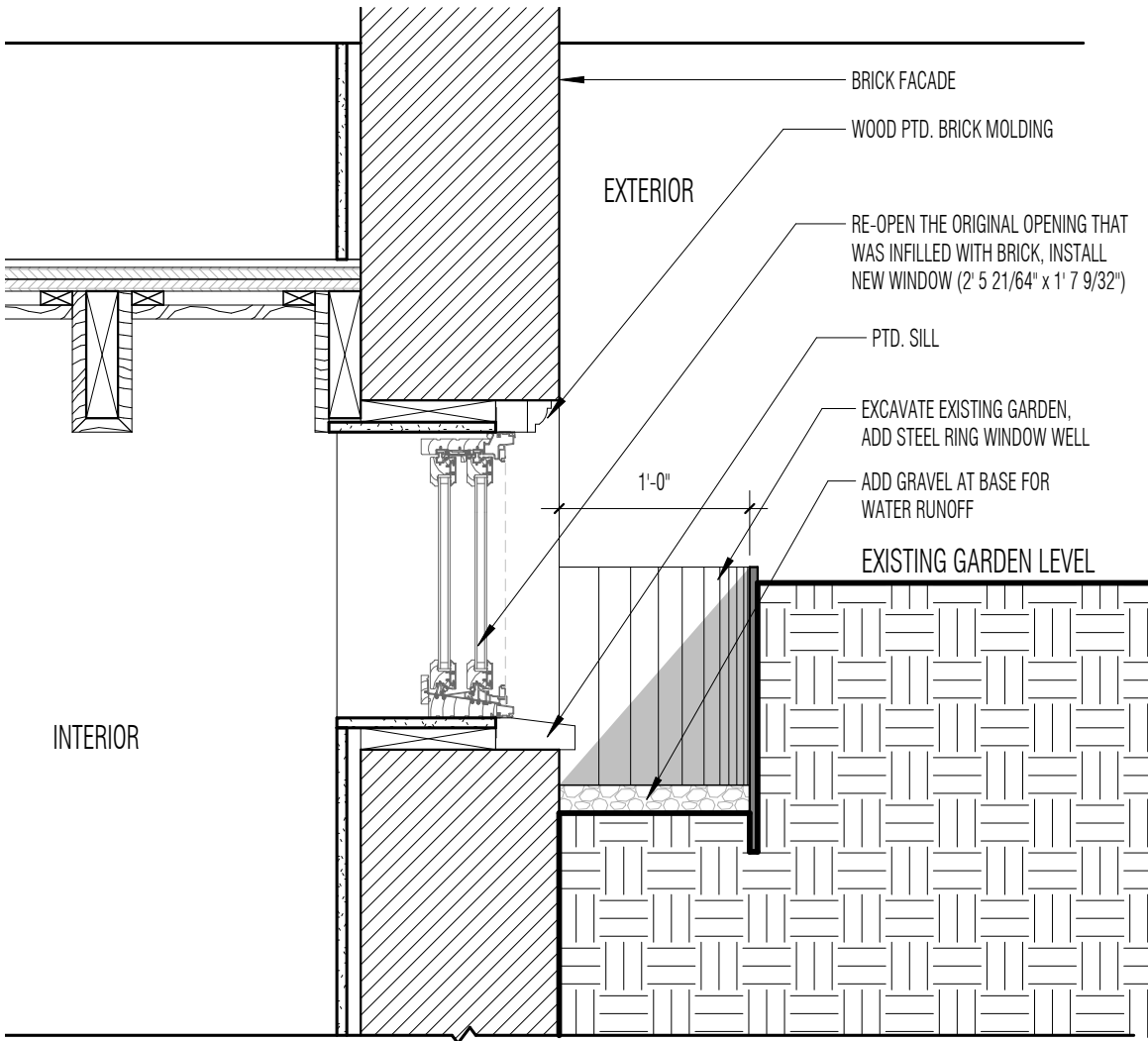
A0.4



9 Follen Street
First Floor Existing and Proposed Plan



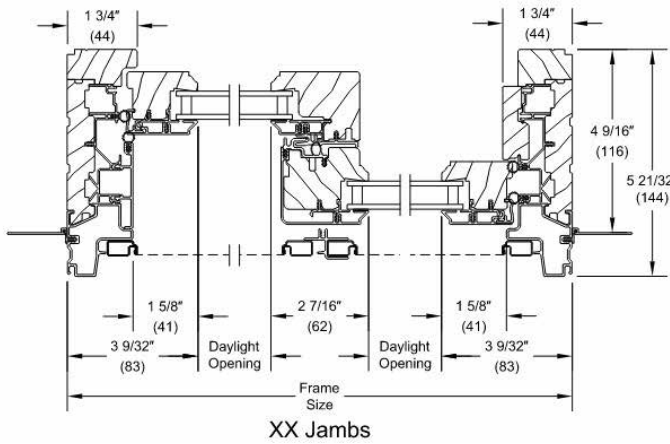
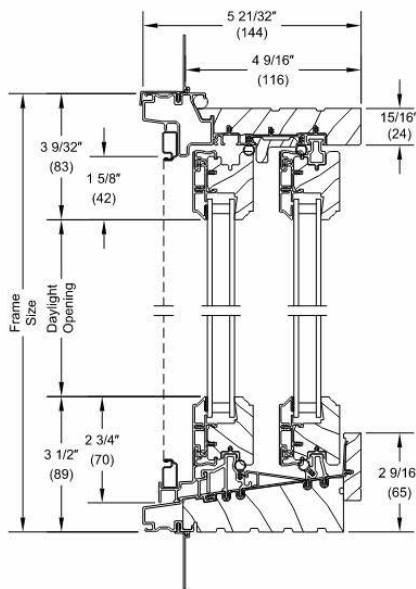
EXAMPLE OF WINDOW WELL RING + SLIDING



1 WINDOW WELL DETAIL

1" = 1'-0"

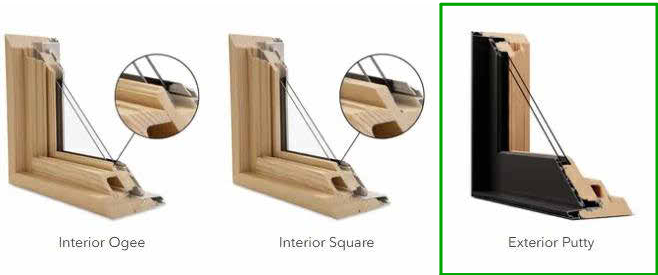
SLIDING WINDOW
MARVIN - ULTIMATE GLIDER



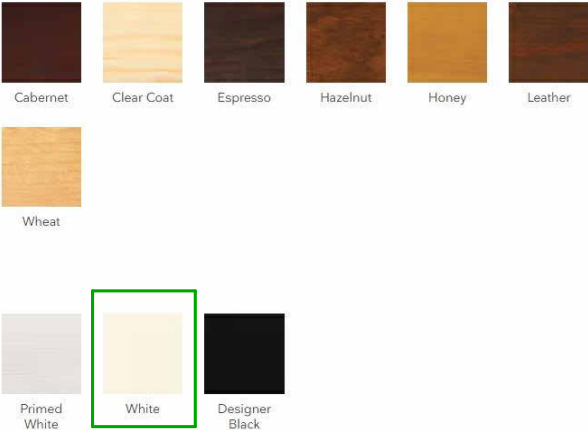
EXTERIOR FINISH



GLAZING PROFILE



INTERIOR FINISH

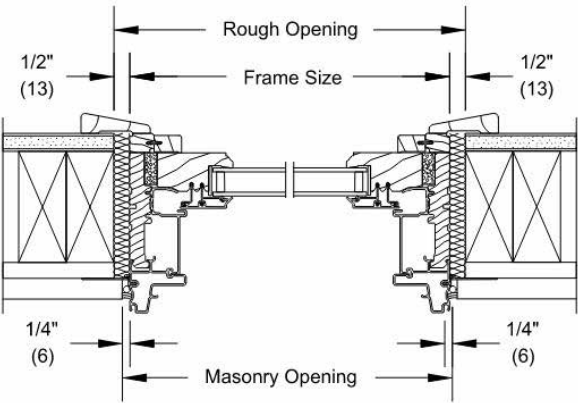
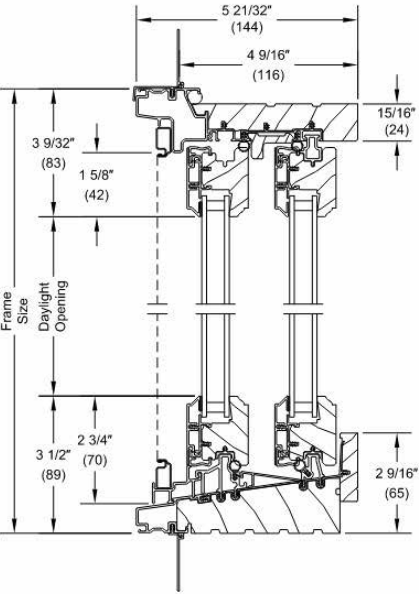
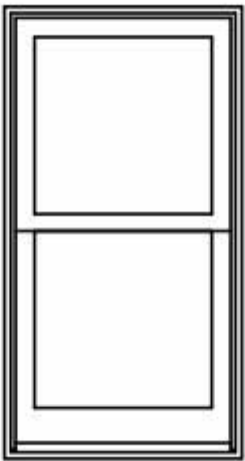


SCREEN



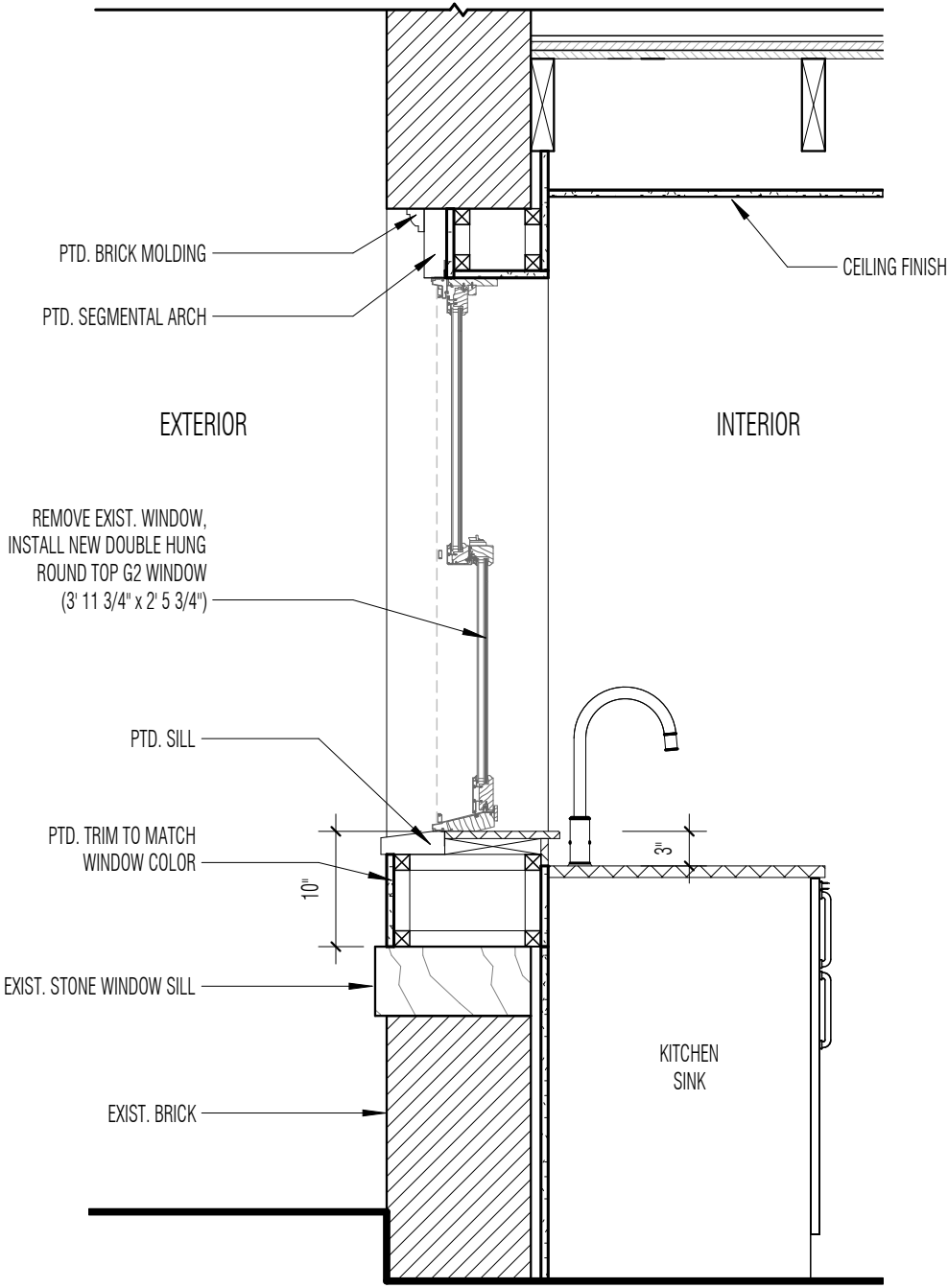
9 Follen Street
Window details

DOUBLE HUNG WINDOWS
MARVIN - ULTIMATE DOUBLE HUNG G2
(UDHG2 2020)

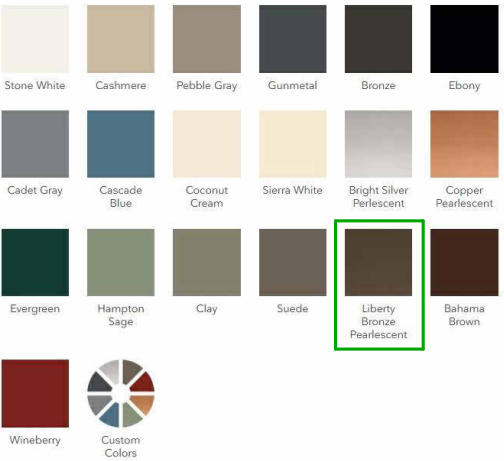


Head Jamb and Sill

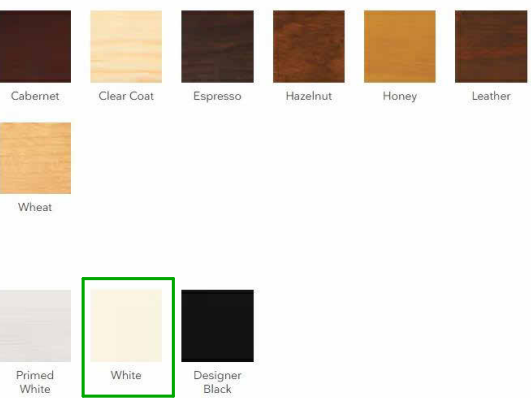
JAMB - PICTURE



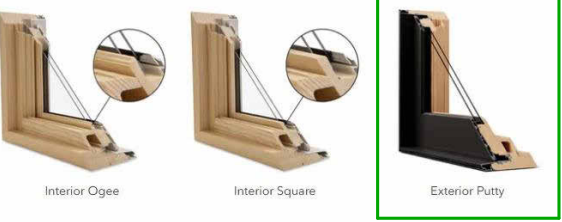
EXTERIOR FINISH



INTERIOR FINISH



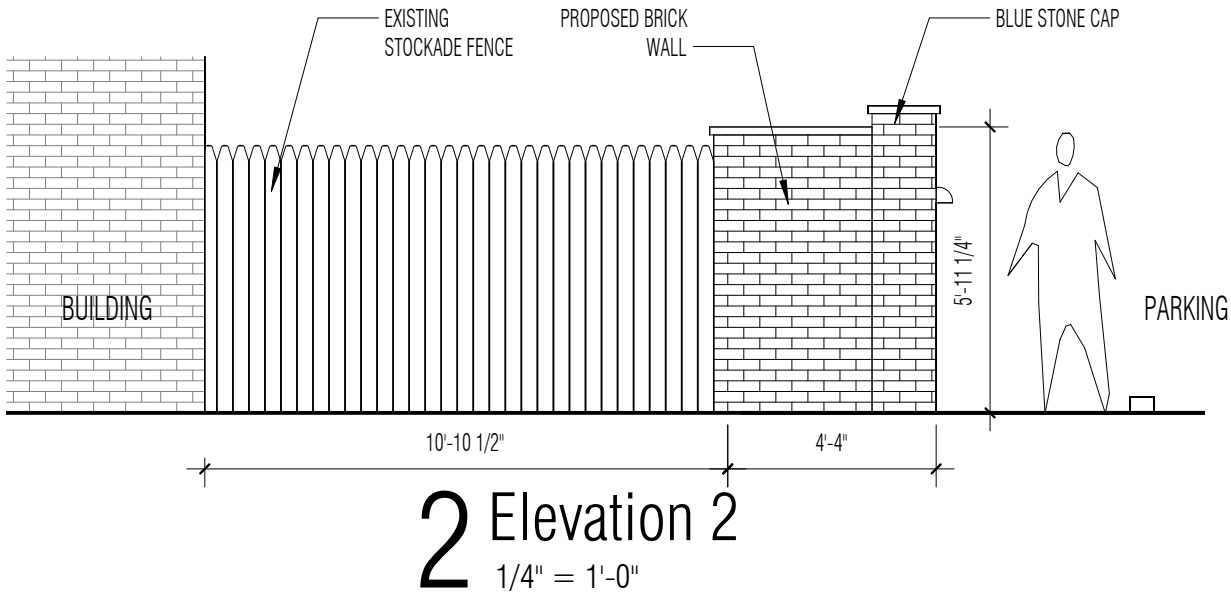
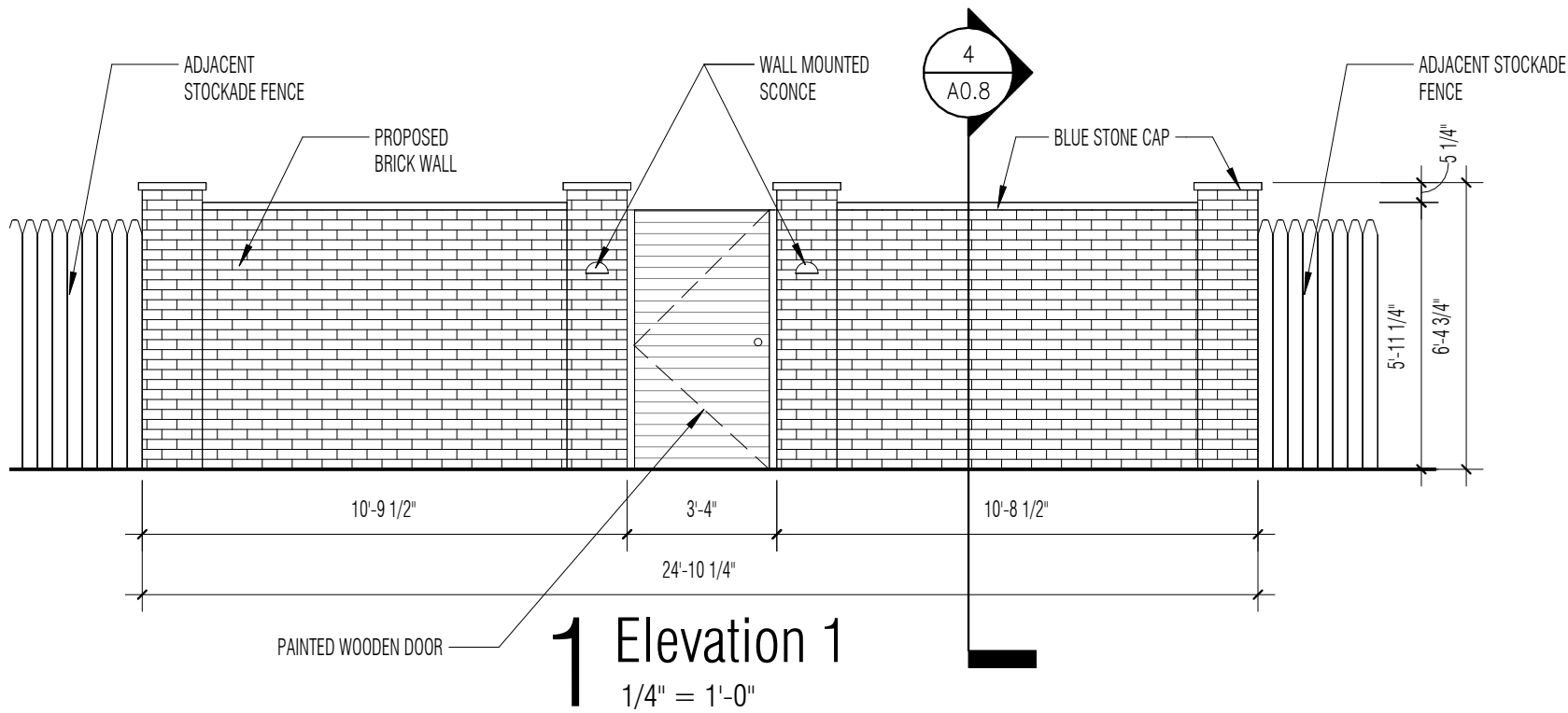
GLAZING PROFILE



SCREEN



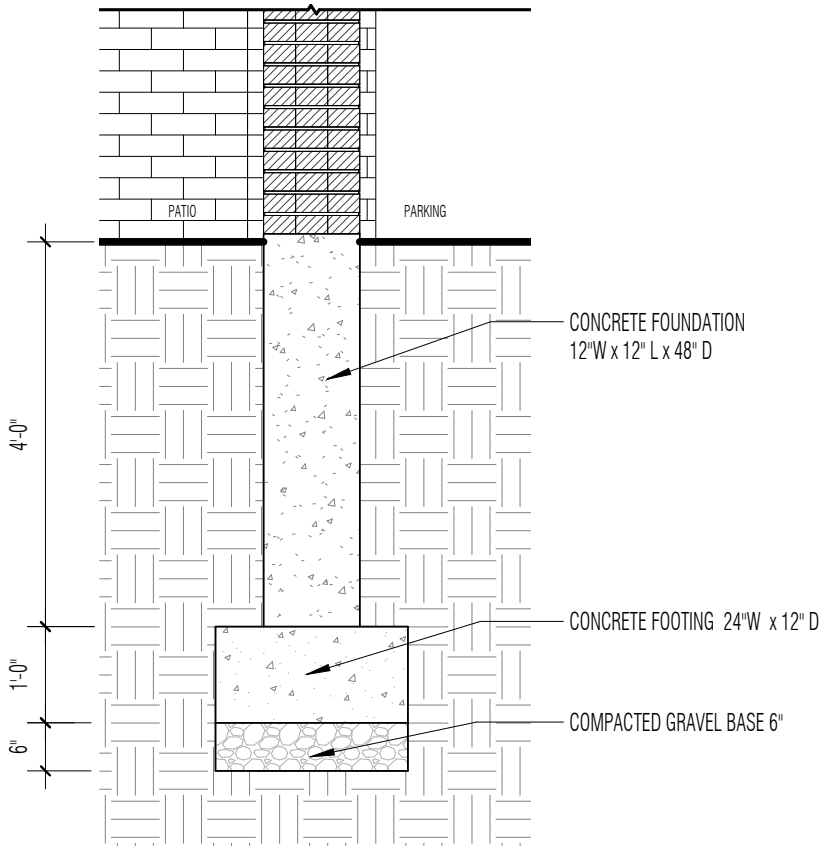
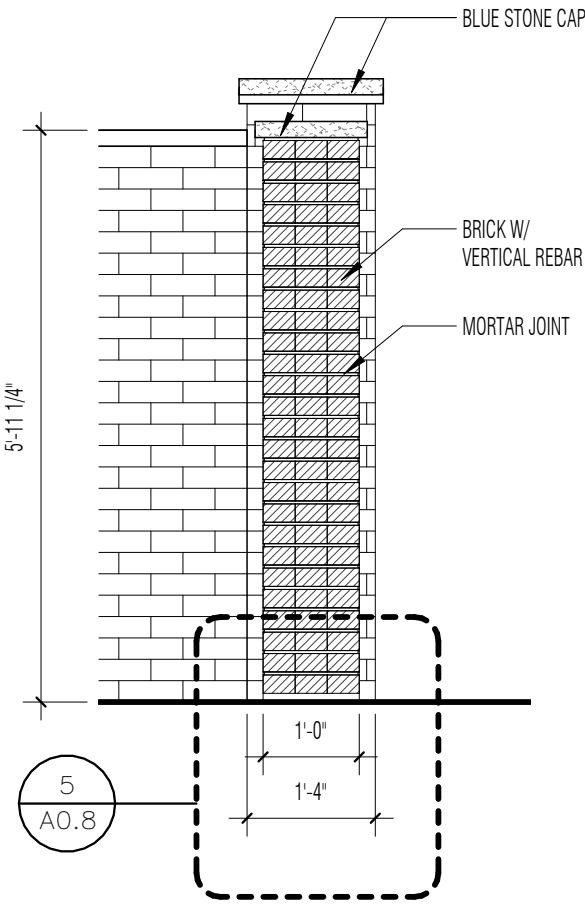
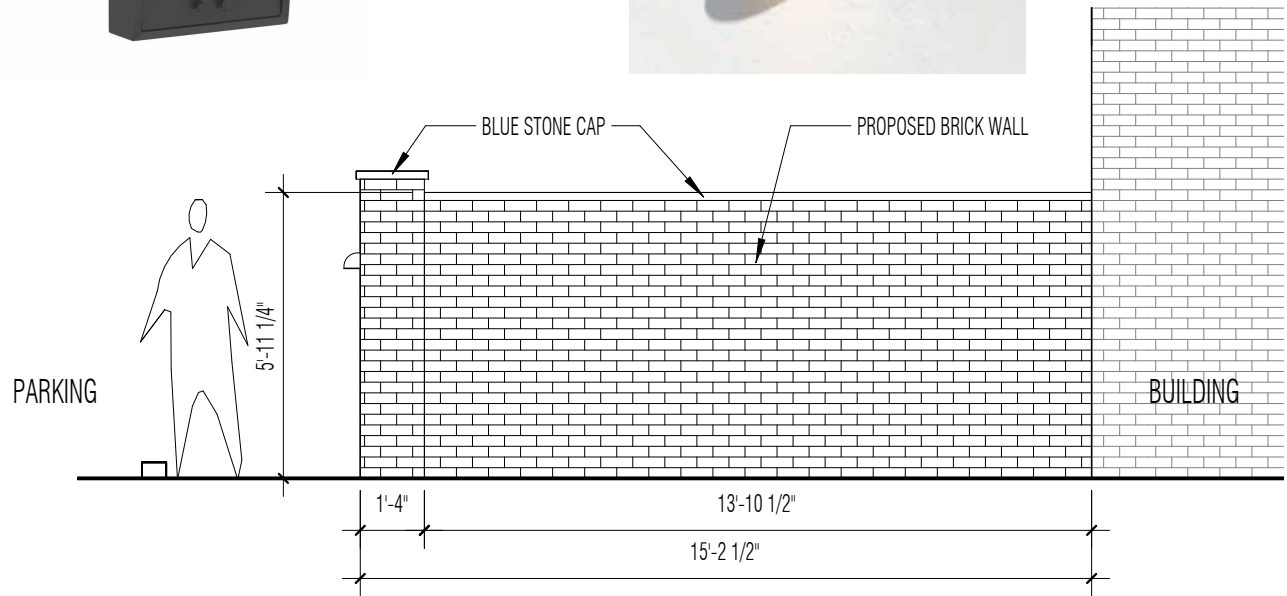
1 WINDOW DETAIL (KITCHEN ONLY)
3/4" = 1'-0"



SCHLAGE TOUCH KEYLESS
TOUCHSCREEN LEVER WITH
BROADWAY LEVER,
FINISH - MATTE BLACK



FRONT GATE SCONCE - ALL MODERN,
LUTHER SINGLE LIGHT NOVELTY
OUTDOOR ALUMINUM LED WALL LIGHT,
FINISH - MATTE BLACK





Project:

Location:

Fixture Type:

Catalog Number:

AVAILABLE FINISHES:



Oslo

WS-W18710

PRODUCT DESCRIPTION

The more time you spend with this refined outdoor sconce, the more you realize how exceptional it is. The artfully crafted body is smooth and supple, featuring subtly rounded shapes at the base and head, which is set off perfectly by a brilliant cone of mouth-blown etched opal glass peeking out from the hood. It doesn't hurt that Oslo features some of the best LEDs in the industry, bringing incredible illumination to your exterior décor.

FEATURES

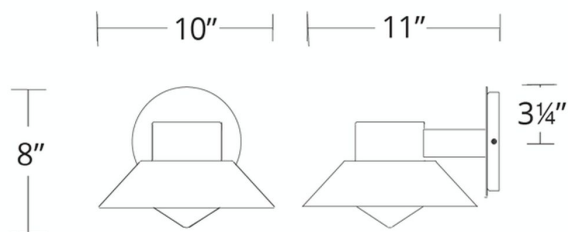
- ACLED driverless technology
- Mouth-blown etched opal glass
- 0-10V dimming option available (special order), unit dimensions: 3.4" x 1.2" x 0.5" (model#LDS065M010AFE-LO1)

SPECIFICATIONS

Rated Life	54000 Hours
Standards	ETL, cETL, Wet Location Listed, IP65
Input	120 VAC, 50/60Hz
Dimming	ELV
Color Temp	3000K
CRI	90
Construction	Aluminum and Mouth blown opal etched glass

REPLACEMENT PARTS

RPL-GLA-18710-01 - Glass



WS-W18710

Model & Size	Color Temp	Finish	LED Watts	LED Lumens	Delivered Lumens
WS-W18710 10"	3000K	BK Black	11.9W	760	408

Example: **WS-W18710-BK**

For custom requests please contact customs@modernforms.com

Luther Single Light Novelty Outdoor Aluminum LED Wall Light

SKU: A000514530

Features

- Integrated LED
- Photocell Included
- Cemmercial or Residential use
- For Outdoor Use
- Wet rated

Weights & Dimensions

- Overall: 4.5" H X 7" W X 3.5" D
- Body: 4.5" H X 7" W X 3.5" D
- Overall Product Weight: 1.51 lb.

