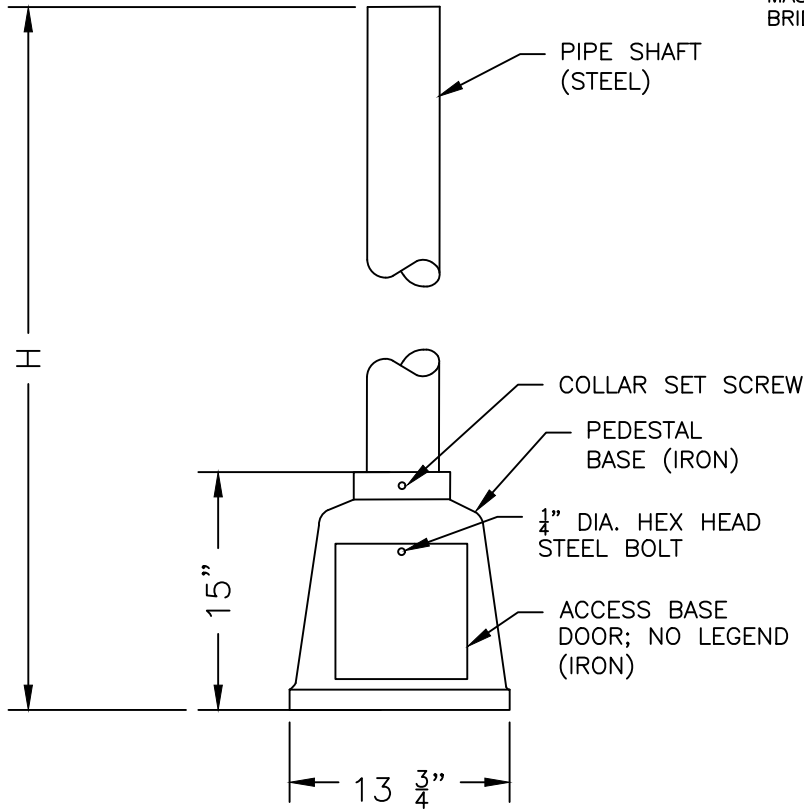


4" STANDARD PIPE SHAFT. BOTTOM END SHALL BE THREADED OUTSIDE, 4" STANDARD PIPE THREAD. SHAFT SHALL BE PAINTED INSIDE AND OUTSIDE IN ACCORDANCE WITH SECTION 800 SUBSECTION 815.61 OF THE COMMONWEALTH OF MASSACHUSETTS STANDARD SPECIFICATION FOR HIGHWAY AND BRIDGES.

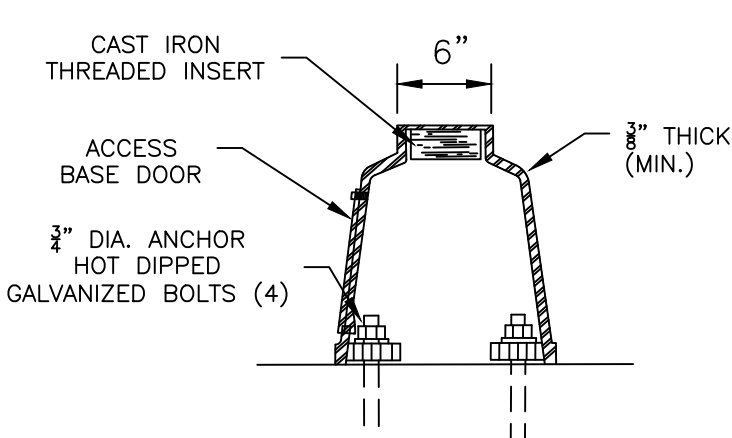
TYPE	POST HT.	H
3A	8'-0"	8'-0"
3B	9'-0"	9'-0"
3C	10'-0"	10'-0"
3D	12'-0"	12'-0"
3E	12'-6"	12'-6"
3P	5'-0"	5'-0"



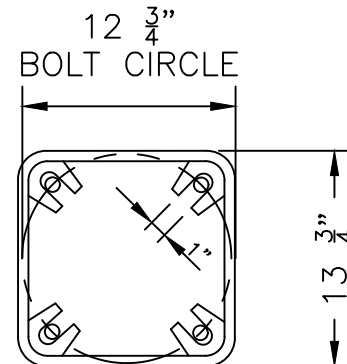
FRONT VIEW

NOTES:

1. THE BASE AND ACCESS DOOR SHALL BE FABRICATED IN IRON MATERIAL AND PAINTED FACTORY POWDER COATED BLACK.
2. THE SURFACES SHALL BE PAINTED IN ACCORDANCE WITH SECTION 800 SUBSECTION 815.61 OF THE COMMONWEALTH OF MASSACHUSETTS STANDARD SPECIFICATION FOR HIGHWAY AND BRIDGES.
3. THE BASE SHALL CONTAIN A INTERNAL GROUNDING LUG.
4. THE BASE SHALL CONTAIN A COLLAR SET SCREW.
5. ALL WELDS SHALL BE CONTINUOUS AND OF STANDARD PROPORTIONS.
6. ALL EXTERIOR WELDS SHALL BE GROUND SMOOTH AFTER FABRICATION.
7. ALL EXTERIOR JOINTS SHALL BE WATERTIGHT.
8. THE BASE AND POST SHALL ONLY BE USED AT A LOCATION WHERE ALL POSTS WILL UTILIZE THIS STANDARD UNLESS OTHERWISE DIRECTED BY THE PLANS, SPECIFICATIONS OR BTD ENGINEER.



SECTION VIEW



BOTTOM VIEW

PEDESTAL BASE AND TRAFFIC SIGNAL POST



DATE
4/4/2025

DRAWN BY:
W. ALEMAN
SCALE
NOT TO SCALE

DETAIL NO.
A17
SHEET
1 OF 1