

**April 29<sup>th</sup>, 2025**

**Ronan Park Community Meeting #2**  
**(includes notes and comments from May 3<sup>rd</sup> Pop Up Event)**

*PRESENT: Kezia Ofiesh, My'Kel McMillen, Cathy Baker-Eclipse, Anthony Nguyen, Kaki Martin, Jennifer Ng, Melita Schmeckpeper, Dora Mugerwa, and Community Members*

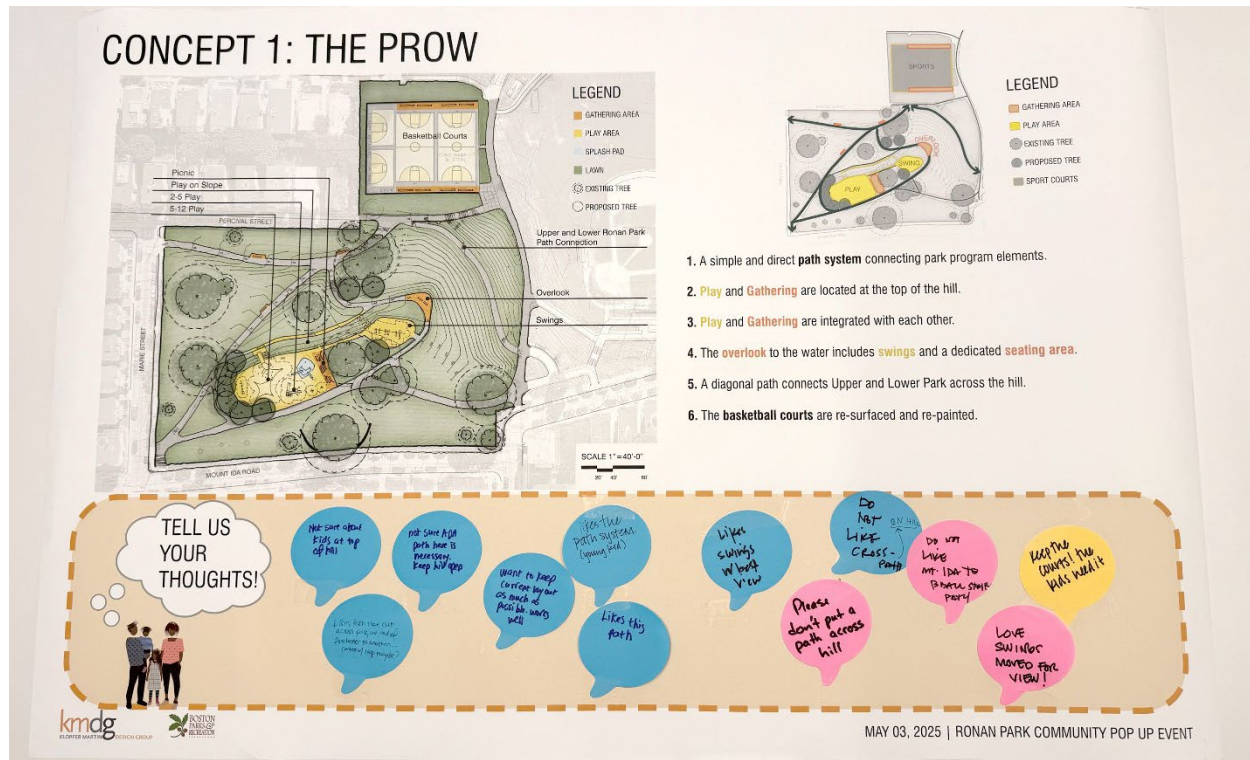
- Kezia Ofiesh introduced the project team at the start of the meeting, reviewed the community meeting protocols and evening agenda. Kezia also presented the Ronan Park project overview, project schedule, and Boston park goals and priorities.
- Kaki Martin and Jennifer Ng presented the project options.
- The meeting concluded with a discussion with community members about design priorities for the park, including input and questions about path system, play, gathering, and basketball courts.

The Pop-Up Event was held on Saturday May 3 on-site from 10-12:30pm. There were approximately 20 people in attendance at the virtual meeting and 27 people at the pop-up event.

Throughout the Community Meeting and at the follow up Pop Up Event, the audience shared their thoughts on the three preliminary schemes for Upper Ronan Park and the key design priorities relative to the path system, play, gathering, and basketball courts. The images and lists below summarize what was shared by community members, questions and comments that were brought up, and insight gained from the meeting discussion and the Pop-Up Event.

*(+ #) represents the number of community members that agreed with the comment*

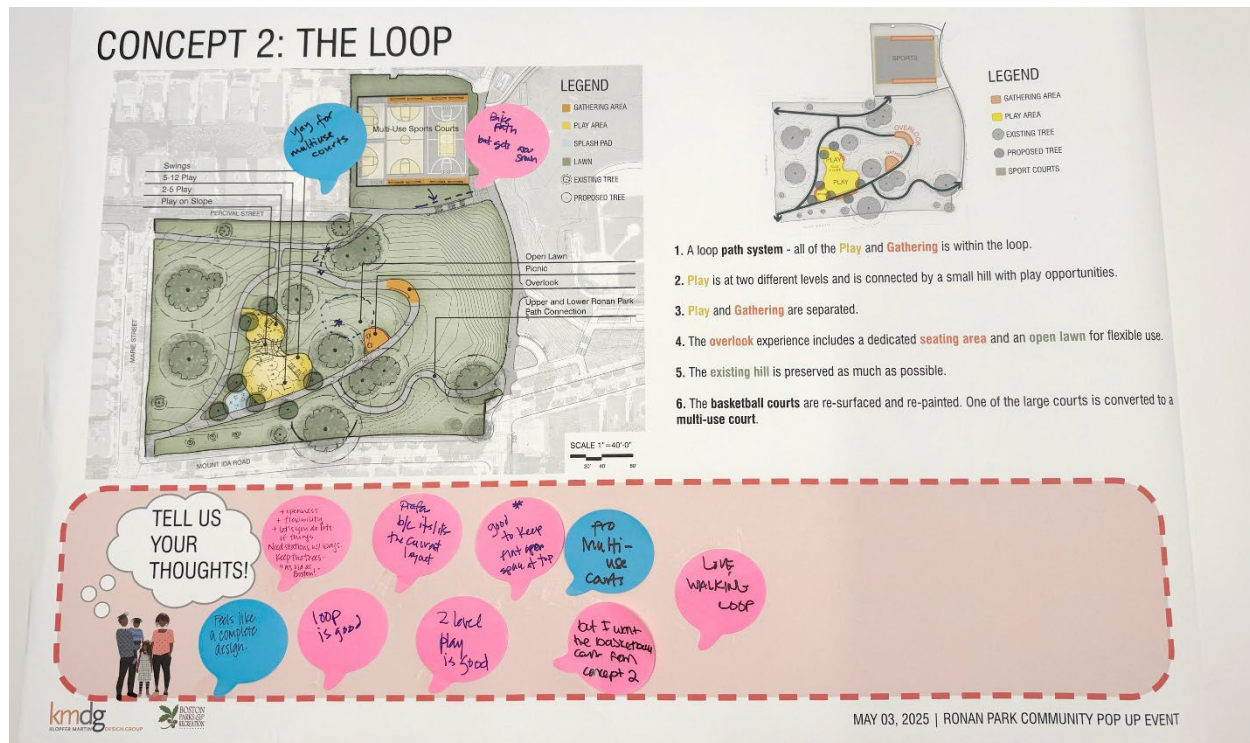
## Concept 1: THE PROW



### TELL US YOUR THOUGHTS

- Not sure about kids playing at the top of the hill.
- Like swings with best view. (+2)
- Like identified desired diagonal path from stairs by basketball court to Marie St and Mount Ida corner. (+2)
  - Like the path system. (+2) *(Team clarification: unclear if these comments are for the full path system or just the paths at the Upper Park.)*
- Do not like the long diagonal path crossing the slope. (+6)
  - Concern the long path will disrupt sledding. (+2)
- Do not like stair path from Mount Ida to basketball courts.
- Nice to have additional benches on paths further from the playground area.
- Keep the basketball courts, the kids need it.

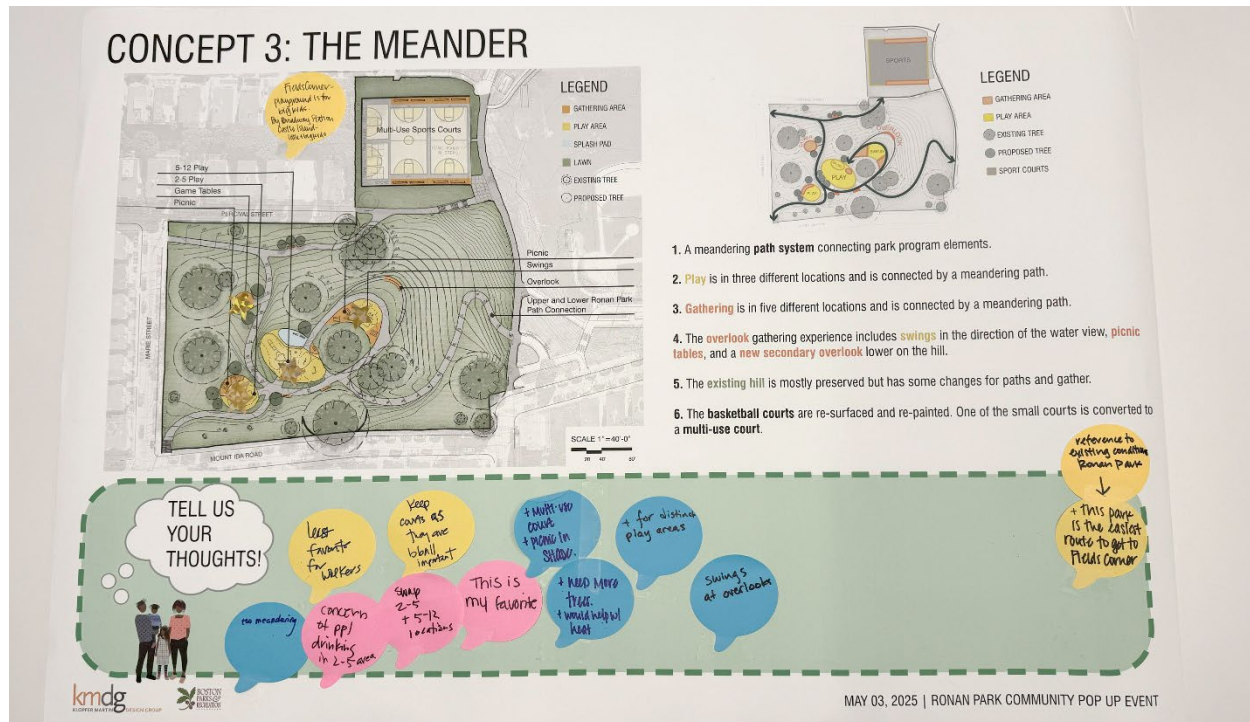
## Concept 2: THE LOOP



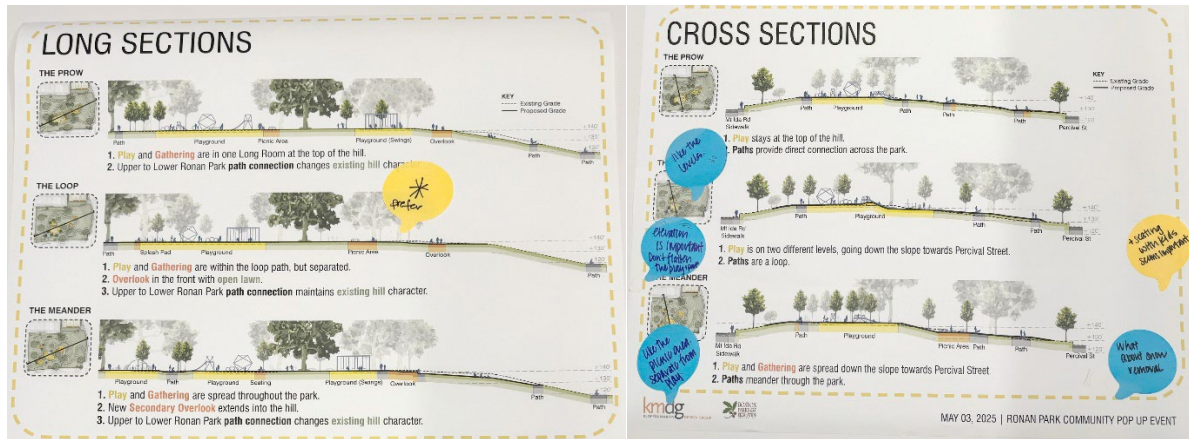
### TELL US YOUR THOUGHTS

- Preferred concept. (+4)
  - This concept lets you do lots of things in the upper park. (+2)
- Like the clear bike path and walking loop opportunity. (+2)
- ADA path up the slope in Loop concept is best.
  - Elevation is important. Don't flatten the play area and slope.
- Like the levels of play. (+3)
- Seating with kids is important.
- Good to keep flat open lawn space at top of hill.
- Keep courts as basketball only.
- Prefer the multi-use courts. (+1)
- Keep the trees.

### Concept 3: THE MEANDER

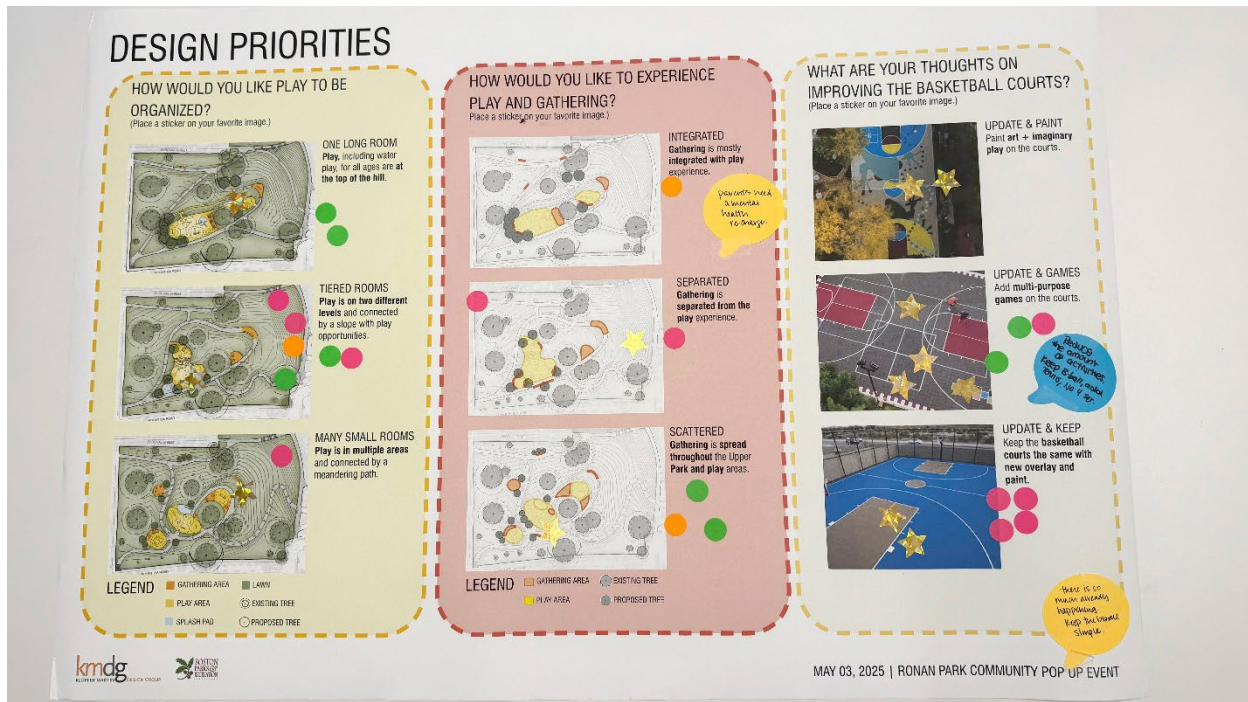


## GENERAL THOUGHTS THAT APPLY ACROSS SCHEMES



- Hill is very popular with sledders in the winter. Any slope adjustments should not undo that fun. (+3)
- Keep park as green as possible, put a limit on structures.
  - More trees
- Benches at the overlook are key.
- Don't have trees block views of the water, especially as trees mature. (+1)
- Maintain a "flat" open lawn for yoga. Currently outdoor yoga supports 10-15 people.
- Circulation should support bike riding.
- The stairs by the basketball court are in poor shape, they need repair.
  - Space between stairs and the basketball courts have historically been difficult to maintain and get overgrown.
- Make sure park design works with maintenance vehicles.
- Need more trash receptacles and dog stations with bags.

## DESIGN PRIORITIES



### HOW WOULD YOU LIKE PLAY TO BE ORGANIZED?

	Child sticker	Adult sticker
One long room	1	2
Tiered rooms	1	6
Many small rooms	1	1

#### COMMENTS:

- Prefer play across separate levels. (+1)
- Parents will like play solution where the kids are always within sight.

### HOW WOULD YOU LIKE TO EXPERIENCE PLAY AND GATHERING?

	Child sticker	Adult sticker
Integrated		1
Separated	1	2
Scattered	1	3

**COMMENTS:**

- Prefer many gathering options and scattered throughout the park. (+3)
  - Benches, picnic areas, etc.
- Parks like this are also meant to provide solitude.
- Parents need spaces for mental health recharge.

**WHAT ARE YOUR THOUGHTS ON IMPROVING THE BASKETBALL COURTS?**

	Child sticker	Adult sticker
Update & paint	2	
Update & games	4	3
Updates & keep	2	4

**COMMENTS:**

- Surveying the basketball court users is key here. Also speak with Beantown Slam and other similar groups.
- Multiuse would be great. But people *do* use both basketball courts simultaneously and that should be maintained. (+4)
  - Prefer no pickleball.
  - Tennis should not impede basketball courts. (+2)
- Basketball courts are used constantly. They need to stay. (+5)
- Artists for humanity is spearheading a mural on basketball courts so whatever repaving/painting happens should complement mural.
- Tiered seating at basketball court is cool.
- Love the colorful basketball courts ideas.

## TELL US WHAT YOU LIKE



## 2-5 PLAY

	Child stickers	Adult stickers
Seesaw	2	
Seesaw	1	
Chimes	2	
Bouncer	2	
Net Structure	1	
Tower bridges slide	2	2
Spinner - group	1	
Imaginary play	1	1
Spinner – individual	2	
Playhouse	1	
Tower	1	1

## 5-12 PLAY

	Child stickers	Adult stickers
Seesaw	3	
Embarkment slide	12 <i>Team clarification: a few kids voted for this slide multiple times</i>	1
Spinner – individual	4	
Group spinner	3	
Tower + slide	1	1
Balance stepper	2	
Climbing wall	1	
Net tower	2	1
Net climber	1	1
Social hang out den	2	
Balance rope	1	*dangerous for young kids

## SWINGS

	Child stickers	Adult stickers
Belt swing 5-12	2	1
Companion swing	2	
Bucket swing 2-5	2	
ADA swing	3	

## SPLASH PAD

	Child stickers	Adult stickers
Loop spray	1	2
Shower spray	2	
Mist		
Water table	1	
Mist	2	2
In ground spray	3	1

### COMMENTS:

- Like the slide on the hill, the net climber and group spinner the best.
- Imagination play is always great - simple counters for store play would be great.
- Like climbing and swinging.
- Love the idea of rubber surfacing somehow echoing the gas tank colors and design.
- Like everything, but like the paired swing and imaginative play and balance the most.
- Would love in-ground or water table options for the splash pad.
- Love the hill slide idea, swings, tower climb would be cool to take advantage of the views.
- Play structure designs need to be more cohesive with each other and site.