

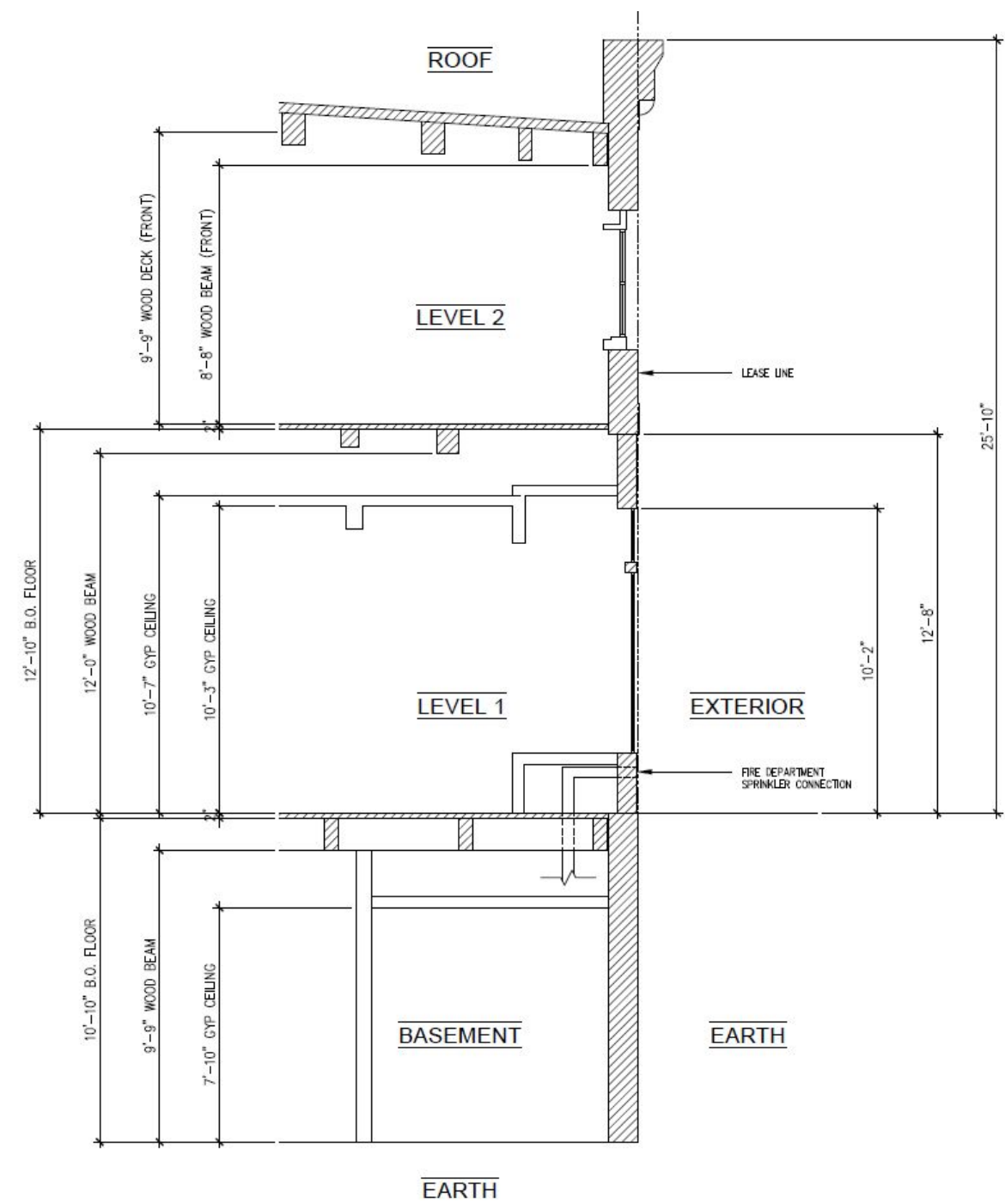
# GARAGE

NEWBURY, BOSTON 2026

# **G★RAGE** | **STOREFRONT DESIGN INTENT NEWBURY STREET, BOSTON**

EXISTING STOREFRONT CONDITIONS  
GARAGE STOREFRONT INTENT & MATERIALS  
BACK BAY RETAILERS OVERVIEW  
GARAGE LED SIGNAGE DETAIL

342 NEWBURY ST., BOSTON  
EXISTING STOREFRONT  
ELEVATION & SECTION



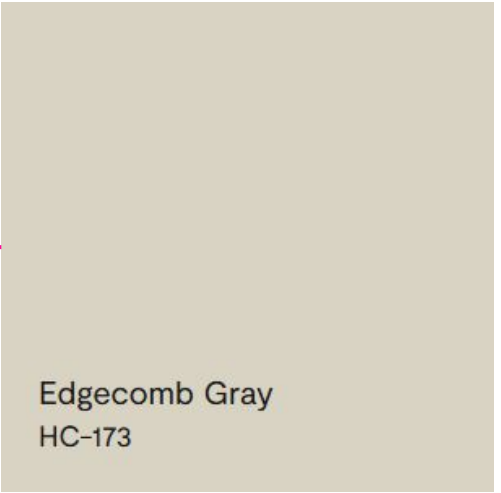
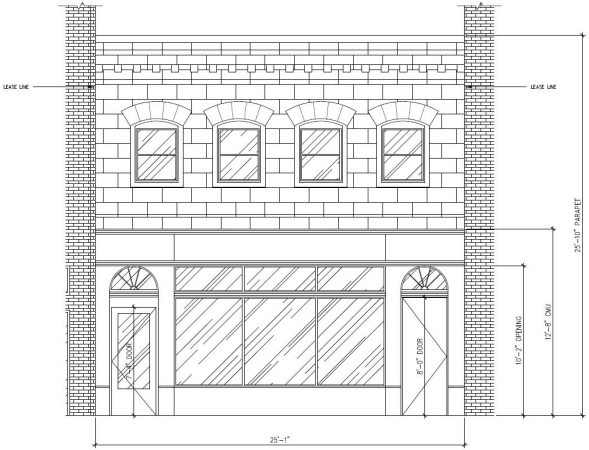


342 NEWBURY ST., BOSTON  
EXISTING STOREFRONT





342 NEWBURY ST., BOSTON  
STOREFRONT INTENT  
& MATERIALS





342 NEWBURY ST., BOSTON  
STOREFRONT INTENT  
& MATERIALS



Existing masonry, roof detail and second floor windows to remain and to be cleaned or with minor repairs for maintenance

**FACADE PAINT  
TRANSITION LINE**

Existing window display, doors and mouldings to remain. These are to be painted  
Benjamin Moore: HC-173 Edgecomb Gray



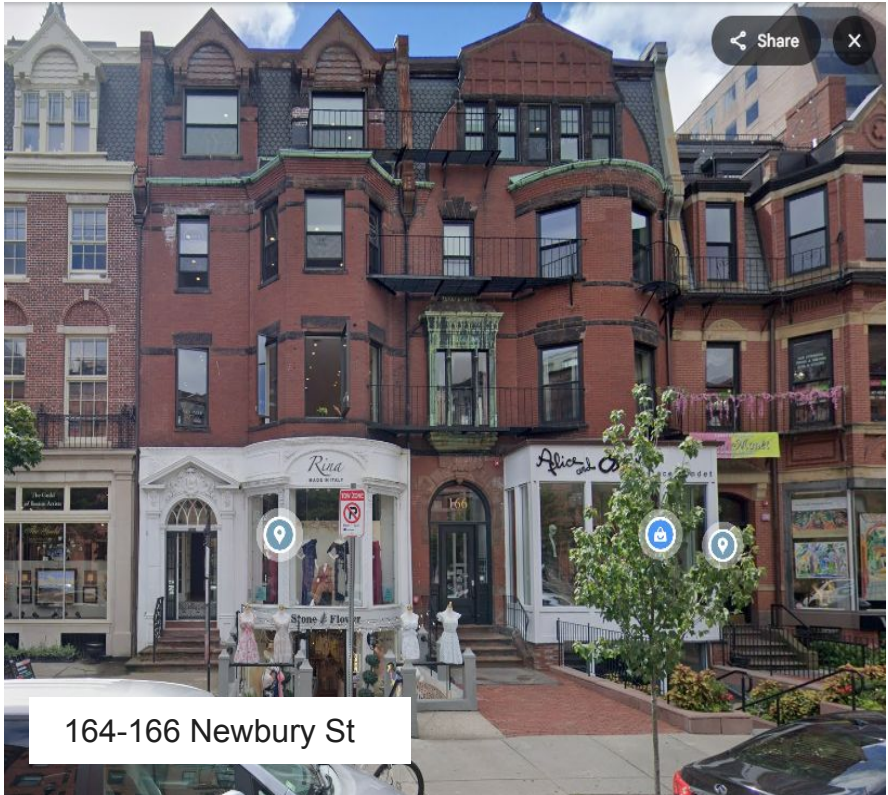
New vertical metal banner, non-illuminated, with tenant store name : GARAGE. Banner suspended from existing post (no new hole in masonry). New metal top arm added in window details to preserve granit condition. Size: 60”H x 18”W.

New horizontal illuminated tenant store sign, GARAGE, surface mounted on existing storefront metal signage band. Signage band to be painted Benjamin Moore: HC-173 Edgecomb Gray Signage size: 18”H x 102”W

Replaced door to match the other side



342 NEWBURY ST., BOSTON  
BACK BAY DISTRICT,  
NEWBURY STREET REFERENCE





**342 NEWBURY ST., BOSTON**  
**TYPICAL LED SIGNAGE, SURFACE MOUNTED 18''**

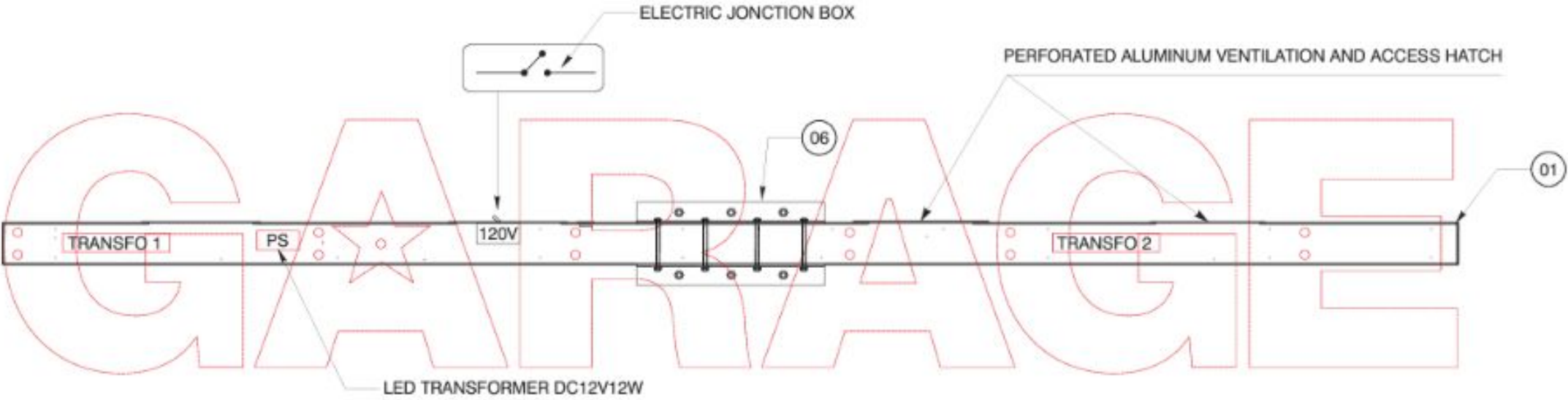
*For reference only.*  
*Signage package will be submitted for LL approval.*



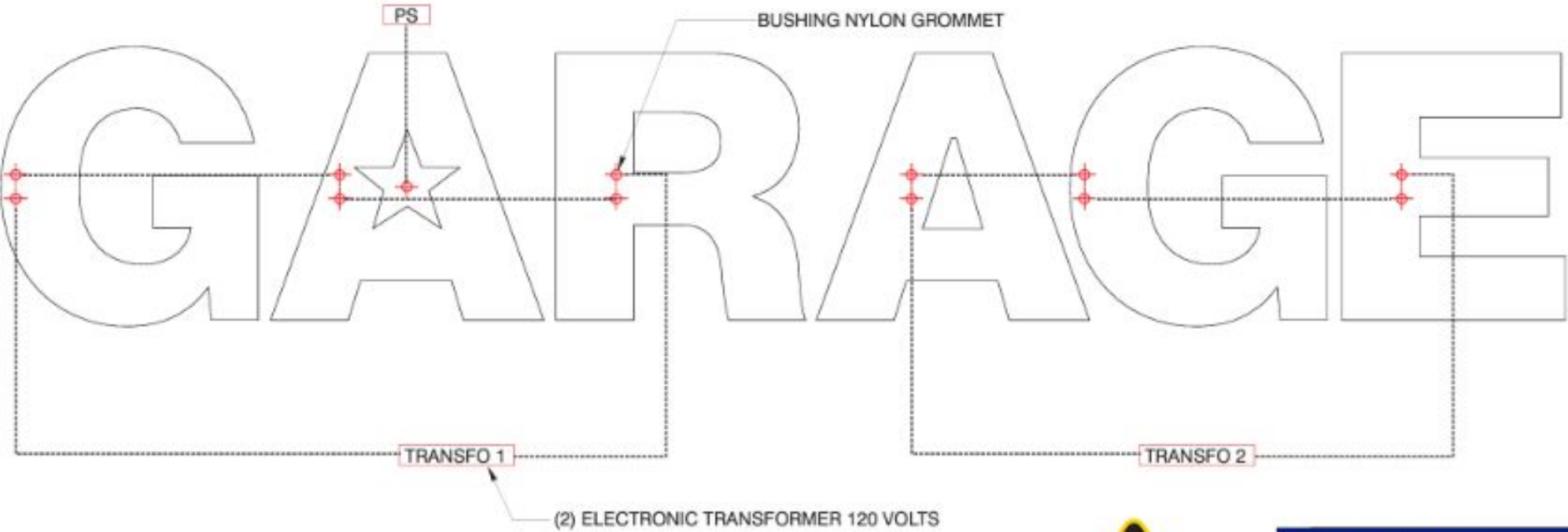


342 NEWBURY ST., BOSTON  
TYPICAL LED SIGNAGE, SURFACE MOUNTED 18''

For reference only.  
Signage package will be submitted for LL approval.



POWER SUPPLY LOCATION  
SCALE: 1" = 1'-0"



POWER SUPPLY DISPLAY  
SCALE: 1" = 1'-0"



5.55 AMP.  
1 CIRCUIT 15 AMP.

TUBE FOOTAGE		
G	12'-0"	2.5 AMP.
A	12'-0"	
R	12'-0"	
A	10'-0"	2.5 AMP.
G	12'-0"	
E	12'-0"	



342 NEWBURY ST., BOSTON  
TYPICAL LED SIGNAGE, SURFACE MOUNTED 18"

For reference only.  
Signage package will be submitted for LL approval.

