

RINGER PARK

TREE COMMUNITY MEETING



August 19, 2025
Boston Parks and Recreation



MEETING RECORDING



The Boston Parks and Recreation Department will be recording the meeting and posting to our project webpage for those who are unable to attend the Zoom meeting live.

It is possible that participants may also be recording the meeting with their phones cameras or other devices. If you do not wish to be recorded during this meeting, please keep your microphone muted and camera off.

*Please share with your neighbors and friends,
<https://www.boston.gov/departments/parks-and-recreation/project/improvements-ringer-park>.*

VIRTUAL MEETING ETIQUETTE

We want to ensure this conversation is a pleasant experience for all and that all community members/stakeholders are comfortable sharing their comments, questions and feedback.

Please be respectful and mindful of each other's time when asking questions/ providing comments, so that all attendees are able to participate in the meeting.

Keep questions/ comments project-specific and not personal to yield solution-driven discussion.

Please wait until all attendees have had the opportunity to ask a question/ provide a comment before providing additional questions/ comments.

*You can always set up a conversation with **NELLIE WARD, NELLE.WARD@BOSTON.GOV**, to further discuss the project or process.*

ZOOM TIPS

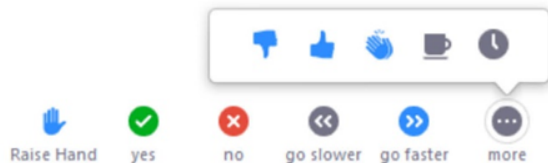
Here is how you can participate during the question and answer part of the presentation.

DURING THE PRESENTATION:



VIA WEB:

Turn video on / off.



To use these non-verbal options click on participants (bottom of screen); these options will pop up in side bar.

DURING THE Q&A:



JOINING VIA PHONE?

Use *9 to raise hand to ask for audio / video permission to ask questions or provide comments.



VIA WEB:

Chat to ask questions / comments or provide responses to poll questions



Raise hand to ask for audio / video permission to ask questions or provide comments.

AGENDA

1

PROJECT TEAM INTRODUCTION

2

PROJECT UPDATE

3

PRESENTATION ON TREE WORK

4

LISTENING & DISCUSSION

5

CLOSING REMARKS & NEXT STEPS

PROJECT TEAM

NELLE WARD

Boston Parks, Project Manager
nelle.ward@boston.gov or 617-635-4505

MY'KEL MCMILLEN

Boston Parks, Community Outreach Coordinator
corey.mcmillen@boston.gov

JEN ROBERTS

Office of Neighborhood Services, Allston-Brighton Liaison
jennifer.roberts@boston.gov

ROB BARELLA

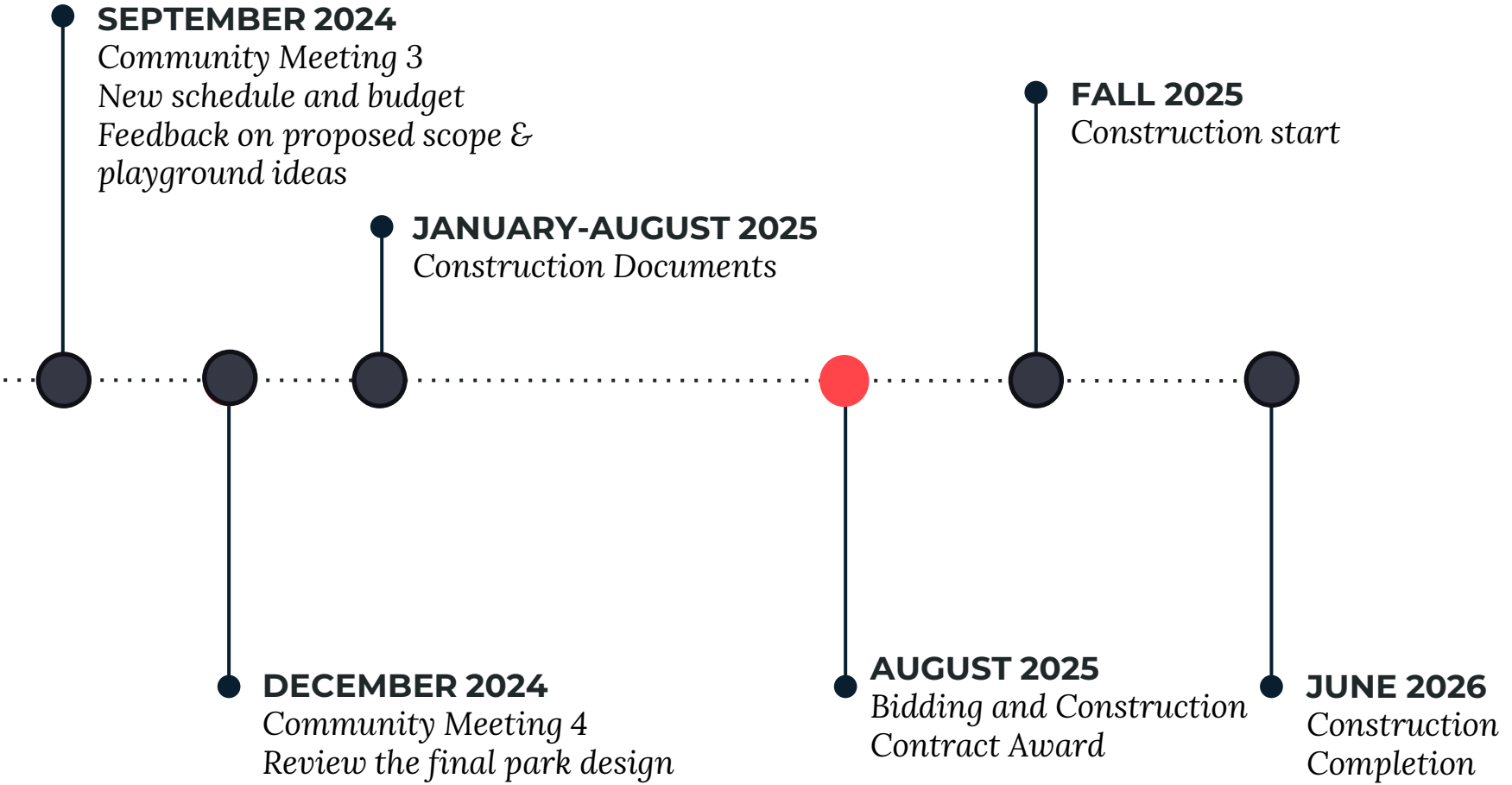
Designer, Senior Associate, Kyle Zick Landscape Architecture, Inc

JOE FIGLIOZZI

Designer, Landscape Architect, Kyle Zick Landscape Architecture, Inc



PROJECT SCHEDULE & FUNDING





CITY OF BOSTON PRIORITIES

- **Family Friendly**
- **Green and Growing**
- **Healthy and Safe**
- **Delivering Exceptional City Services**
- **Closing the Racial Wealth Gap**



PARK & RECREATION GOALS

- Accessible and available to all
- Diverse, balanced, and efficient mix of uses
- Meaningful and inclusive community engagement
- Adaptive and resilient landscapes
- Promote connections



OVERALL PLAN



TREES THAT ARE DEAD OR IN POOR CONDITION TO BE REMOVED

JACKSON MANN
COMMUNITY CENTER
WEBLEY
STREET

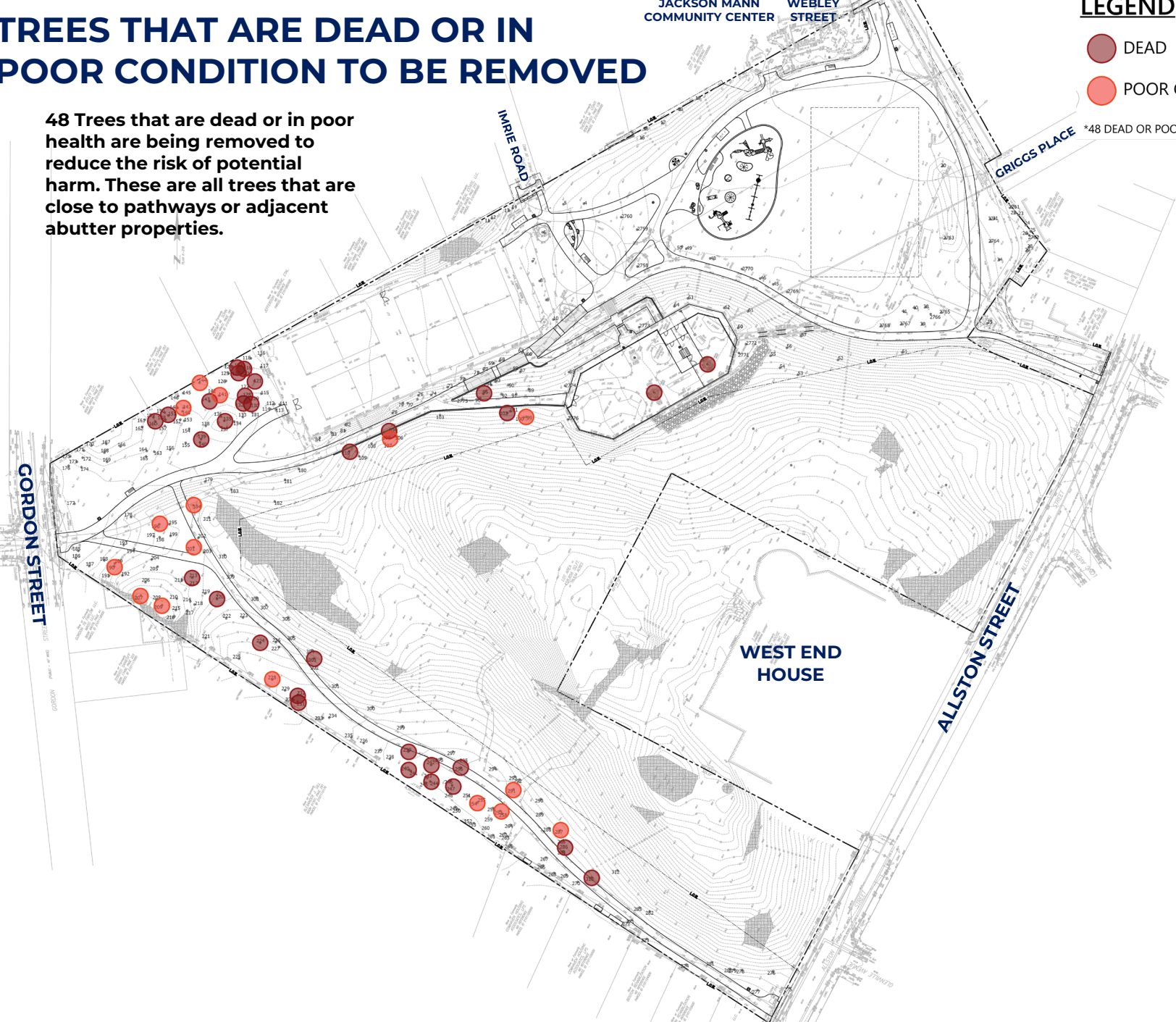
LEGEND

DEAD

POOR CONDITION

*48 DEAD OR POOR CONDITION TREES TO BE REMOVED

48 Trees that are dead or in poor health are being removed to reduce the risk of potential harm. These are all trees that are close to pathways or adjacent abutter properties.



GORDON STREET

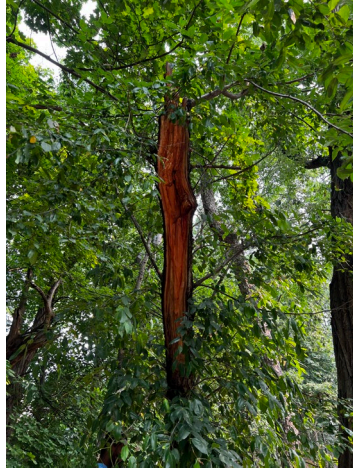
INDIE ROAD

WEST END
HOUSE

ALLSTON STREET

GRIGGS PLACE

TREES THAT ARE DEAD OR IN POOR CONDITION TO BE REMOVED



CITY of BOSTON



REMOVAL

Poor/ Dead Condition

**THIS TREE WILL BE REMOVED AS PART OF THE
UPCOMING IMPROVEMENTS PROJECT IN 2025/26**

This tree will be removed as part of the rehabilitation of Ringer Park. This tree has been evaluated by certified arborists and found to be in a condition that is either "poor" or "dead", and/or is dying or diseased.



**THIS CAN BE DISCUSSED AT THE UPCOMING TREE COMMUNITY MEETING ON
AUGUST 19TH @ 6PM ON ZOOM
TO LEARN MORE ABOUT THE MEETING
PLEASE SCAN HERE OR VISIT [BOSTON.GOV/RINGER-PARK](https://boston.gov/ringer-park)**



INVASIVE TREES TO BE REMOVED

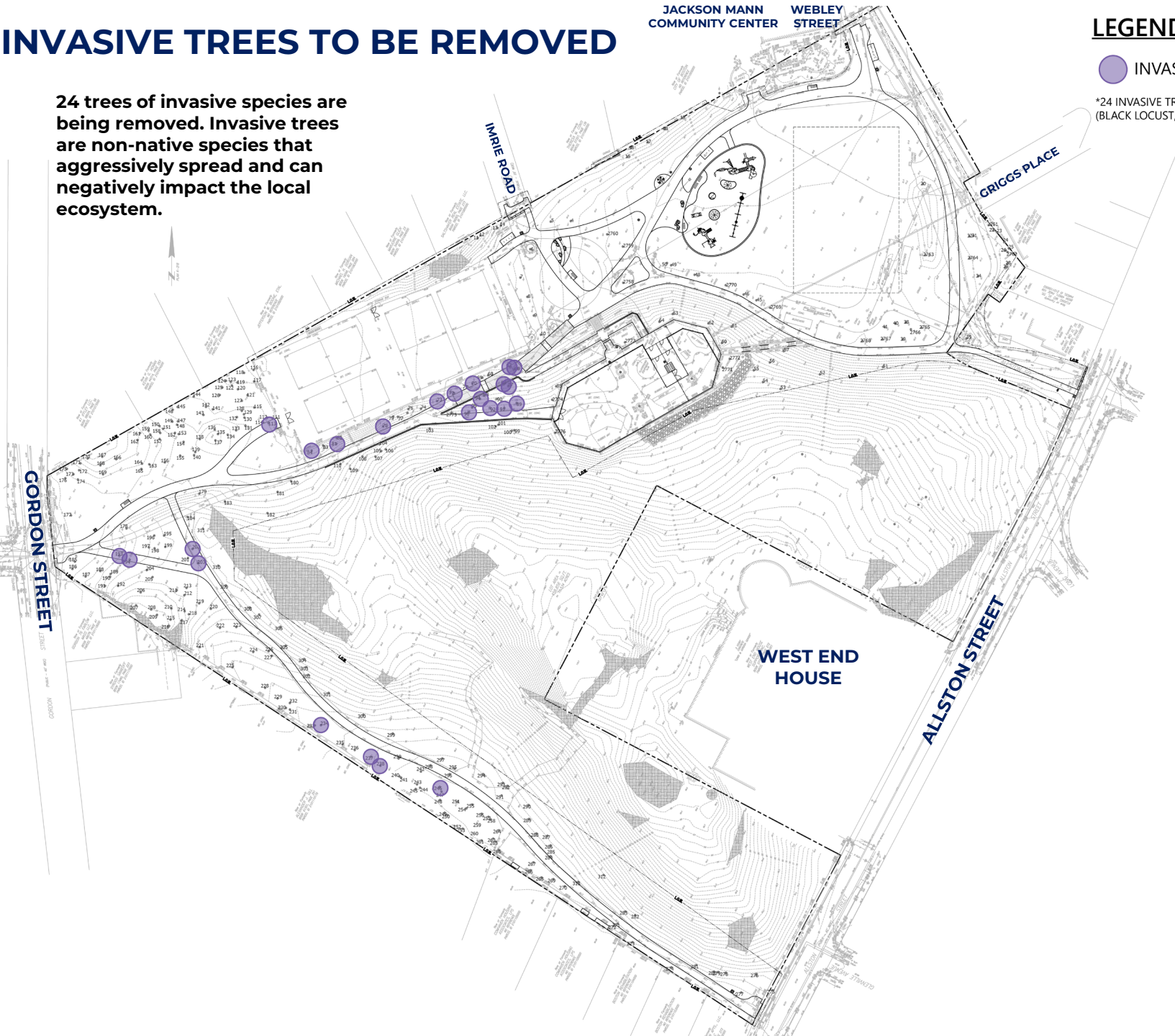
24 trees of invasive species are being removed. Invasive trees are non-native species that aggressively spread and can negatively impact the local ecosystem.

JACKSON MANN
COMMUNITY CENTER
WEBLEY STREET

LEGEND

INVASIVE

*24 INVASIVE TREES TO BE REMOVED
(BLACK LOCUST, NORWAY MAPLE)



GORDON STREET

IMRIE ROAD

GRIGGS PLACE

WEST END HOUSE

ALLSTON STREET

INVASIVE TREES TO BE REMOVED



CITY of BOSTON



REMOVAL *Invasive Species*



**THIS TREE WILL BE REMOVED AS PART OF THE
UPCOMING IMPROVEMENTS PROJECT IN 2026/26**

This tree will be removed as part of the rehabilitation of Ringer Park. This tree species has been identified as invasive in Massachusetts.



THIS CAN BE DISCUSSED AT THE UPCOMING TREE COMMUNITY MEETING ON
AUGUST 19TH @ 6PM ON ZOOM
TO LEARN MORE ABOUT THE MEETING
PLEASE SCAN HERE OR VISIT [BOSTON.GOV/RINGER-PARK](https://boston.gov/ringer-park)

TREES TO BE REMOVED FOR DESIGN PURPOSES

JACKSON MANN
COMMUNITY CENTER

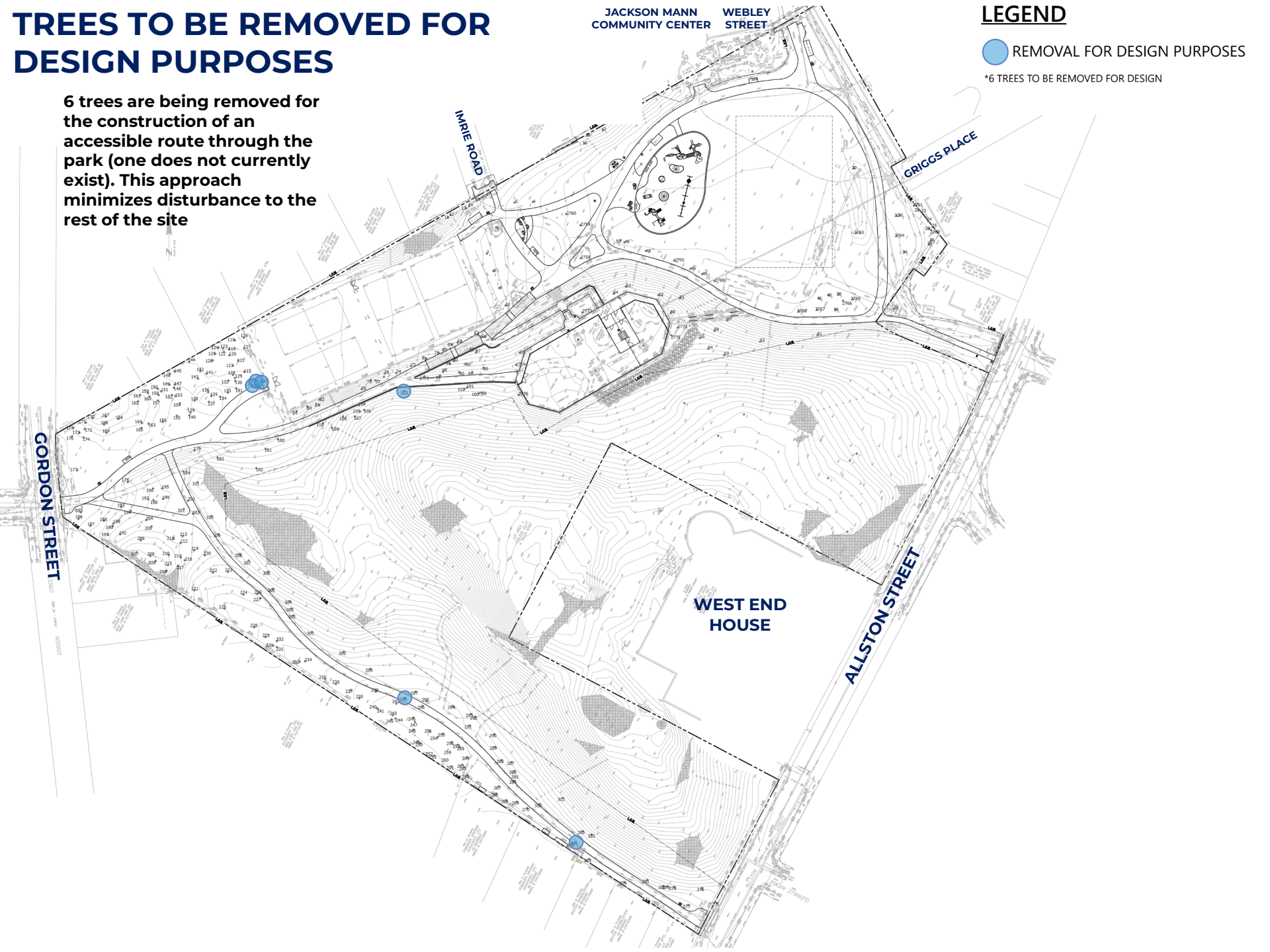
WEBLEY
STREET

LEGEND

 REMOVAL FOR DESIGN PURPOSES

*6 TREES TO BE REMOVED FOR DESIGN

6 trees are being removed for the construction of an accessible route through the park (one does not currently exist). This approach minimizes disturbance to the rest of the site



TREES TO BE REMOVED FOR DESIGN PURPOSES



CITY of BOSTON



REMOVAL

**THIS TREE WILL BE REMOVED AS PART OF THE
UPCOMING IMPROVEMENTS PROJECT IN 2025/26**

This tree or grouping of trees will be removed to enable the
rehabilitation of Ringer Park.



**THIS CAN BE DISCUSSED AT THE UPCOMING TREE COMMUNITY MEETING ON
AUGUST 19TH @ 6PM ON ZOOM
TO LEARN MORE ABOUT THE MEETING
PLEASE SCAN HERE OR VISIT [BOSTON.GOV/RINGER-PARK](https://boston.gov/ringer-park)**

EXISTING TREES TO BE REMOVED

78 Trees will be removed



LEGEND

DEAD

POOR CONDITION

INVASIVE

REMOVAL FOR DESIGN PURPOSES

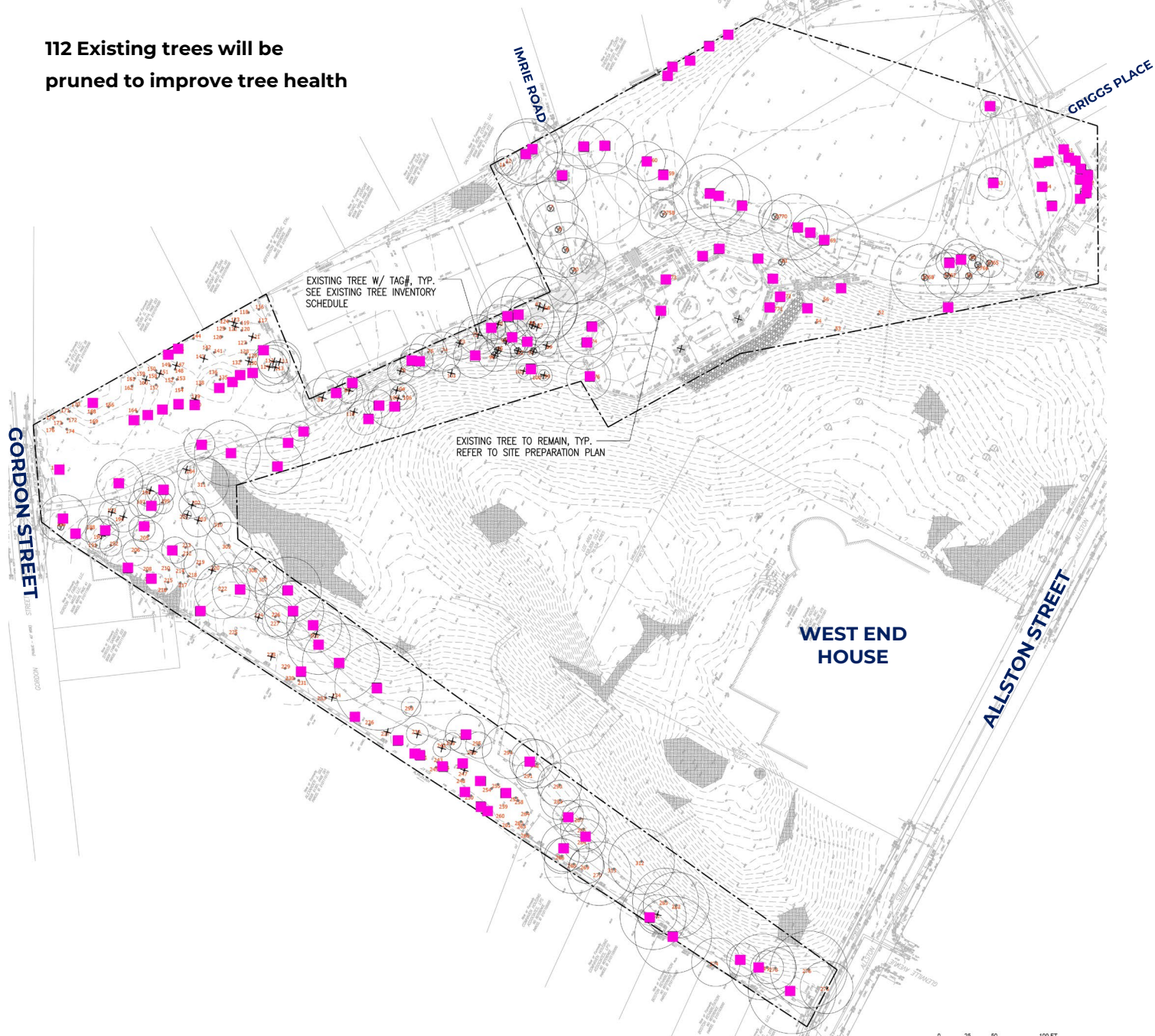
TreeTag	DBH (inches)	Common Name	Scientific Name	Pruning Scope	Old Number
66	14	Locust, Black	Robinia pseudoacacia	Remove	
67	42	Locust, Black	Robinia pseudoacacia	Remove	
70	23	Locust, Black	Robinia pseudoacacia	Remove	
72	31	Locust, Black	Robinia pseudoacacia	Remove	
73	18	Locust, Black	Robinia pseudoacacia	Remove	
78	10	Locust, Black	Robinia pseudoacacia	Remove	
81	20	Locust, Black	Robinia pseudoacacia	Remove	
84	16	Locust, Black	Robinia pseudoacacia	Remove	
87	8	Locust, Black	Robinia pseudoacacia	Remove	
88	30	Locust, Black	Robinia pseudoacacia	Remove	
89	6	Locust, Black	Robinia pseudoacacia	Remove	
91	6	Locust, Black	Robinia pseudoacacia	Remove	
92	2	Locust, Black	Robinia pseudoacacia	Remove	
94	11	Locust, Black	Robinia pseudoacacia	Remove	
95	8	Locust, Black	Robinia pseudoacacia	Remove	
96	27	Locust, Black	Robinia pseudoacacia	Remove	
99	4	Cherry, Black	Prunus serotina	Remove	
102	4	Oak	Quercus species	Remove	
103	7	Redcedar, Eastern	Juniperus virginiana	Remove	
104	4	Locust, Black	Robinia pseudoacacia	Remove	
105	6	Locust, Black	Robinia pseudoacacia	Remove	
110	7	Locust, Black	Robinia pseudoacacia	Remove	
111	17	Cherry, Black	Prunus serotina	Remove	
112	11	Cherry, Black	Prunus serotina	Remove	
113	19	Locust, Black	Robinia pseudoacacia	Remove	
114	10	Cherry, Black	Prunus serotina	Remove	
119	19	Locust, Black	Robinia pseudoacacia	Remove	
121	23	Locust, Black	Robinia pseudoacacia	Remove	
122	8	Locust, Black	Robinia pseudoacacia	Remove	
123	23	Locust, Black	Robinia pseudoacacia	Remove	
128	7	Locust, Black	Robinia pseudoacacia	Remove	
130	5	Locust, Black	Robinia pseudoacacia	Remove	
132	16	Locust, Black	Robinia pseudoacacia	Remove	
135	7	Locust, Black	Robinia pseudoacacia	Remove	
139	9	Cherry, Black	Prunus serotina	Remove	
141	22	Locust, Black	Robinia pseudoacacia	Remove	
143	19	Locust, Black	Robinia pseudoacacia	Remove	
144	23	Locust, Black	Robinia pseudoacacia	Remove	
147	22	Locust, Black	Robinia pseudoacacia	Remove	
151	6	Locust, Black	Robinia pseudoacacia	Remove	
160	10	Locust, Black	Robinia pseudoacacia	Remove	
184	9	Cherry, Black	Prunus serotina	Remove	
190	11	Locust, Black	Robinia pseudoacacia	Remove	
193	6	Maple, Norway	Acer platanoides	Remove	
194	11	Maple, Norway	Acer platanoides	Remove	
196	15	Cherry, Black	Prunus serotina	Remove	
201	8	Locust, Black	Robinia pseudoacacia	Remove	
202	13	Locust, Black	Robinia pseudoacacia	Remove	
203	11	Maple, Norway	Acer platanoides	Remove	
207	16	Oak, Swamp White	Quercus bicolor	Remove	
209	15	Locust, Black	Robinia pseudoacacia	Remove	
213	5	Oak, Northern Red	Quercus rubra	Remove	
220	6	Oak, Northern Red	Quercus rubra	Remove	
224	18	Hickory, Pignut	Carya glabra	Remove	
2799	31	Locust, Black	Robinia pseudoacacia	Remove	
281	29	Locust, Black	Robinia pseudoacacia	Remove	
282	17	Locust, Black	Robinia pseudoacacia	Remove	
284	18	Maple, Norway	Acer platanoides	Remove	
287	17	Locust, Black	Robinia pseudoacacia	Remove	
288	31	Locust, Black	Robinia pseudoacacia	Remove	
289	24	Locust, Black	Robinia pseudoacacia	Remove	
290	25	Cherry, Black	Prunus serotina	Remove	
292	10	Cherry, Black	Prunus serotina	Remove	
294	8	Locust, Black	Robinia pseudoacacia	Remove	
296	13	Locust, Black	Robinia pseudoacacia	Remove	
297	7	Locust, Black	Robinia pseudoacacia	Remove	
298	10	Cherry, Black	Prunus serotina	Remove	
299	5	Cherry, Black	Prunus serotina	Remove	
271	13	Cherry, Black	Prunus serotina	Remove	
285	25	Locust, Black	Robinia pseudoacacia	Remove	
287	23	Locust, Black	Robinia pseudoacacia	Remove	
291	8	Cherry, Black	Prunus serotina	Remove	
296	8	Locust, Black	Robinia pseudoacacia	Remove	
298	8	Cherry, Black	Prunus serotina	Remove	
303	8	Oak	Quercus species	Remove	
313	5	Cherry, Black	Prunus serotina	Remove	

*78 TREES TO BE REMOVED

TREE PRUNING WORK

JACKSON MANN
COMMUNITY CENTER WEBLEY
STREET

112 Existing trees will be
pruned to improve tree health



EXISTING TREE W/ TAG#, TYP.
SEE EXISTING TREE INVENTORY
SCHEDULE

EXISTING TREE TO REMAIN, TYP.
REFER TO SITE PREPARATION PLAN

WEST END
HOUSE

ALLSTON STREET

CRIGGS PLACE

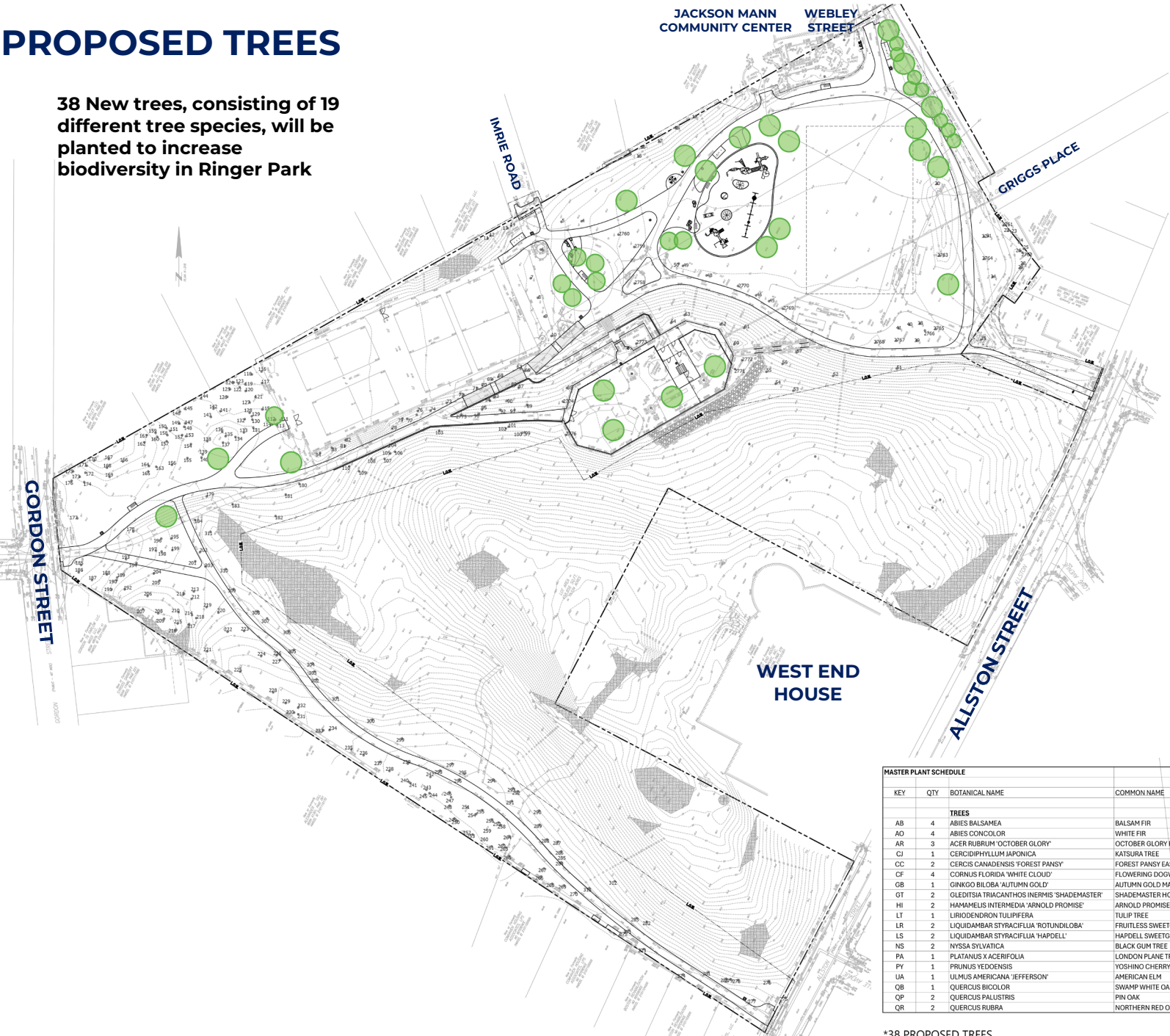
IMRIE ROAD

GORDON STREET

0 25 50 100 FT.

PROPOSED TREES

38 New trees, consisting of 19 different tree species, will be planted to increase biodiversity in Ringer Park



MASTER PLANT SCHEDULE					
KEY	QTY	BOTANICAL NAME	COMMON NAME	SIZE	NOTES
TREES					
AB	4	ABIES BALSAMICA	BALSAM FIR	8-10' HT	
AO	4	ABIES CONCOLOR	WHITE FIR	8-10' HT	
AR	3	ACER RUBRUM 'OCTOBER GLORY'	OCTOBER GLORY RED MAPLE	3-3.5' CAL	FALL DIG HAZARD
CJ	1	CERCIDIPHYLLUM JAPONICA	KATSURA TREE	3-3.5' CAL	FALL DIG HAZARD
CC	2	CERCIS CANADENSIS 'FOREST PANSY'	FOREST PANSY EASTERN REDBUD	3-3.5' CAL	SINGLE STEM
CF	4	CORNUS FLORIDA 'WHITE CLOUD'	FLOWERING DOGWOOD	3-3.5' CAL	FALL DIG HAZARD
GB	1	GINKGO BILOBA 'AUTUMN GOLD'	AUTUMN GOLD MAIDENHAIR TREE	3-3.5' CAL	
GT	2	GLEDITSIA TRIACANTHOS INERMIS 'SHADEMASTER'	SHADEMASTER HONEYLOCUST	3-3.5' CAL	FRUITLESS, FALL DIG HAZARD
HI	2	HAMAMELUS INTERMEDIA 'ARNOLD PROMISE'	ARNOLD PROMISE WITCHHAZEL	7-8' HT	R&B
LT	1	LIRIODENDRON TULIPIFERA	TULIP TREE	3-3.5' CAL	FALL DIG HAZARD
LR	2	LIQUIDAMBAR STYRACIFLUA 'ROTUNDILOBA'	FRUITLESS SWEETGUM	3-3.5' CAL	FRUITLESS, FALL DIG HAZARD
LS	2	LIQUIDAMBAR STYRACIFLUA 'HAPELLE'	HAPELLE SWEETGUM	3-3.5' CAL	FRUITLESS, FALL DIG HAZARD
NS	2	NYSSA SYLVATICA	BLACK GUM TREE	3-3.5' CAL	FALL DIG HAZARD
PA	1	PLATANUS X ACERIFOLIA	LONDON PLANE TREE	3-3.5' CAL	FALL DIG HAZARD
PY	1	PRUNUS YEDOENSIS	YOSHINO CHERRY	3-3.5' CAL	FALL DIG HAZARD
UA	1	ULMUS AMERICANA 'JEFFERSON'	AMERICAN ELM	3-3.5' CAL	FALL DIG HAZARD
QB	1	QUERCUS BICOLOR	SWAMP WHITE OAK	3-3.5' CAL	FALL DIG HAZARD
QP	2	QUERCUS PALUSTRIS	PIN OAK	3-3.5' CAL	FALL DIG HAZARD
QR	2	QUERCUS RUBRA	NORTHERN RED OAK	3-3.5' CAL	FALL DIG HAZARD

*38 PROPOSED TREES

PROPOSED TREES



ABIES BALSAMEA
BALSAM FIR



ABIES CONCOLOR
WHITE FIR



ACER RUBRUM
'OCTOBER GLORY'
OCTOBER GLORY
RED MAPLE



CERCIDIPLYLLUM
JAPONICA
KATSURA TREE



CERCIS CANADENSIS
'FOREST PANSY'
FOREST PANSY
EASTERN REDBUD



CORNUS FLORIDA
'WHITE CLOUD'
FLOWERING DOGWOOD



GINKO BILOBA
'AUTUMN GOLD'
AUTUMN GOLD
MAIDENHAIR TREE



GLEDITSIA TRIACANTHOS
INERMIS 'SHADEMASTER'
SHADEMASTER
HONEYLOCUST



HAMAMELIS INTERMEDIA
'ARNOLD PROMISE'
ARNOLD PROMISE
WITCHHAZEL



LIRIODENDRON
TULIPIFERA
TULIP TREE



LIQUIDAMBAR STYRACIFLUA
'ROTUNDILOBA'
FRUITLESS SWEETGUM



LIQUIDAMBAR STYRACIFLUA
'HAPDELL'
HAPDELL SWEETGUM



NYSSA SYLVATICA
BLACK GUM TREE



PLATANUS X ACERIFOLIA
LONDON PLANE TREE



PRUNUS YEDOENSIS
YOSHINO CHERRY

PROPOSED TREES



ULMUS AMERICANA
'JEFFERSON'
AMERICAN ELM



QUERCUS BICOLOR
SWAMP WHITE OAK



QUERCUS PALUSTRIS
PIN OAK



QUERCUS RUBRA
NORTHERN RED OAK



LISTENING & DISCUSSION

Help us build great parks.
Let us know what matters to you.



THANK YOU!

For questions, maintenance requests or
concerns regarding any of our
parks contact 311

BOS:
311



August 19, 2025
Boston Parks and Recreation

