

# *Improvements to* **CLIFFORD PLAYGROUND**



## **Community Meeting 4**

June 10, 2024 – 6-7:30 PM  
Boston Parks and Recreation



# AGENDA

---

1

**INTRODUCTION**

---

2

**PROJECT OVERVIEW**

---

3

**PRESENTATION OF FINAL SCHEMATIC DESIGN**

---

4

**FINAL SCHEMATIC DESIGN: LISTENING & DISCUSSION**

---

5

**NEXT STEPS**

---

# CITY OF BOSTON TEAM

---

## **LAUREN BRYANT**

PROJECT MANAGER, BOSTON PARKS  
[Lauren.Bryant@boston.gov](mailto:Lauren.Bryant@boston.gov) or 617-961-3019

## **CATHY BAKER-ECLIPSE**

DIRECTOR OF THE CAPITAL PLAN,  
BOSTON PARKS  
[cathy.baker-eclipse@boston.gov](mailto:cathy.baker-eclipse@boston.gov)

## **ANSHI MORENO JIMENEZ**

MAYOR'S OFFICE, POLICY TEAM  
[anshi.morenojimenez@boston.gov](mailto:anshi.morenojimenez@boston.gov)

## **JAMES GREENE**

MAYOR'S OFFICE OF HOUSING  
[james.j.greene@boston.gov](mailto:james.j.greene@boston.gov)

## **AVERY ESDAILE**

BOSTON PUBLIC SCHOOLS ATHLETICS  
[aesdaile@bostonpublicschools.org](mailto:aesdaile@bostonpublicschools.org)

## **BRIANNA MILLOR**

CHIEF OF COMMUNITY ENGAGEMENT  
[brianna.millor@boston.gov](mailto:brianna.millor@boston.gov)

## **ASHA JANAY**

ONS ROXBURY LIAISON  
[asha.janay@boston.gov](mailto:asha.janay@boston.gov)

## **JENNIFER TRACEY**

BOSTON PUBLIC HEALTH COMMISSION  
DIRECTOR OF RECOVERY SERVICES  
[jtracey@bphc.org](mailto:jtracey@bphc.org)

## **MOHAMMED MISSOURI**

MAYOR'S OFFICE  
DIRECTOR OF STAKEHOLDER ENGAGEMENT  
[mohammed.missouri@boston.gov](mailto:mohammed.missouri@boston.gov)

# DESIGN TEAM

---

## BSC GROUP

BUILD | SUPPORT | CONNECT

### **Ricardo Austrich, PLA**

Director of Landscape Architecture/Project Manager

### **Katie Kemen**

Director of Climate Resilience/Assistant Project Manager

### **Jesse Harris, RLA**

Project Landscape Architect

### **Catarina Martinez**

Resilience Planner

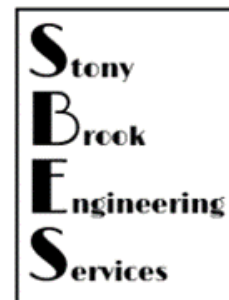
### **Tomer Rabinowitz**

Architect

### **Rachel Salch, PLA**

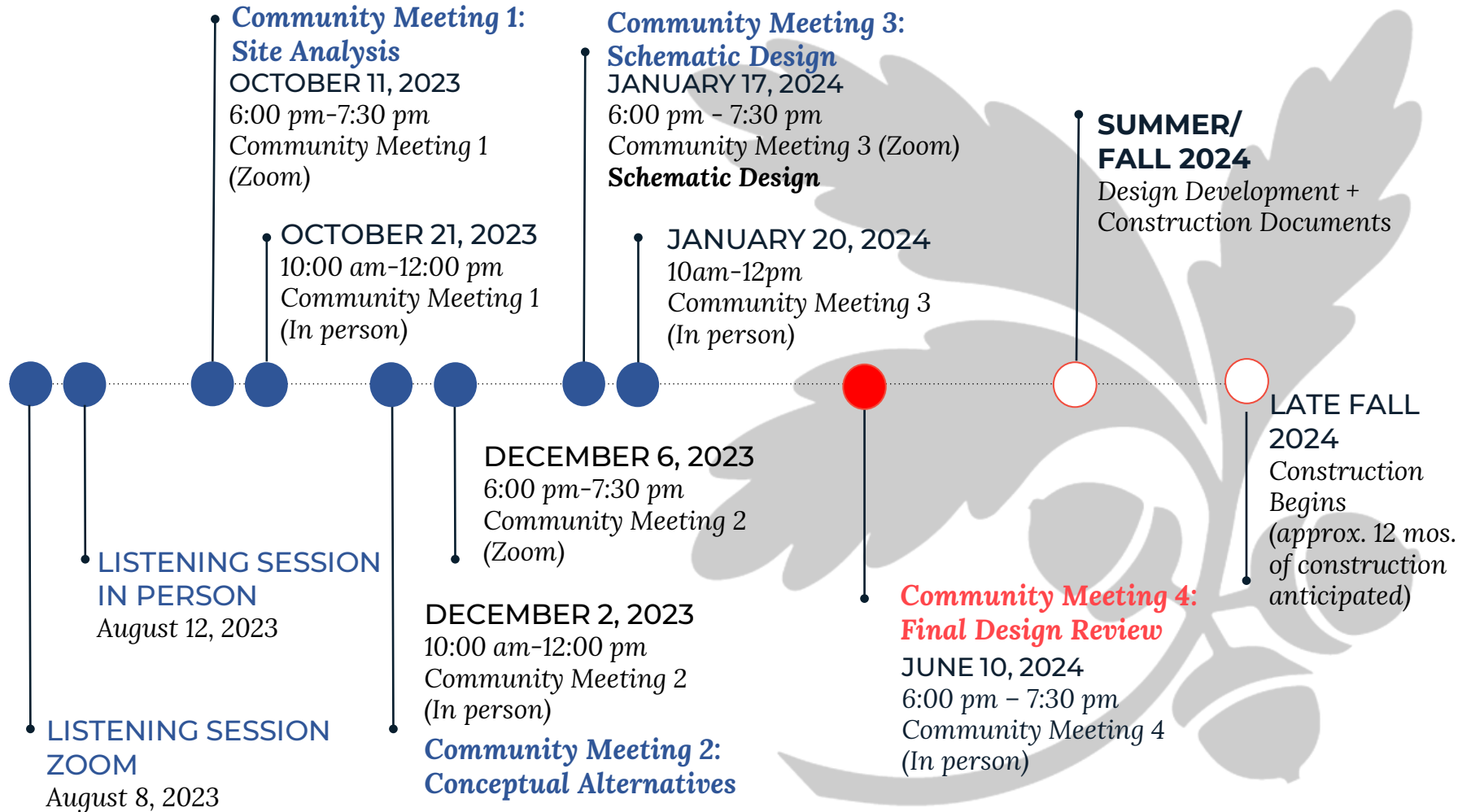
Landscape Architect

## Additional Project Team





# PROJECT SCHEDULE





# RENOVATION VISION & GOALS

---

## VISION

---

An inclusive, resilient, and highly utilized park which reflects the needs of all park users and contributes to the overall vibrancy of the surrounding community.

## GOALS

---

- 1 Improve Openness and Visibility
- 2 Increase Utilization of and Activity within the Park
- 3 Increase Resilience of the Park
- 4 Increase Vibrancy of the Neighborhood

# RECENT COMMUNITY & STAKEHOLDER ENGAGEMENT

Online  
Surveys: adult  
& youth  
versions; 4  
languages  
(Dec/ Jan)

Community  
Meeting #3:  
Zoom & In-  
Person  
(Jan)

Boston  
Conservation  
Commission  
Preliminary  
Meeting  
(May)

Conversations  
with Roxbury  
Prep  
(Dec)

Mason  
School  
Playground  
Design  
Workshop  
(Mar)

Conversations  
with The Base  
(May)





# WHAT WE HEARD

## COMMUNITY MEETINGS 1, 2, & 3

---

### Fields



- Multi-use fields
- Softball & intermediate/larger size baseball fields

### Surfacing



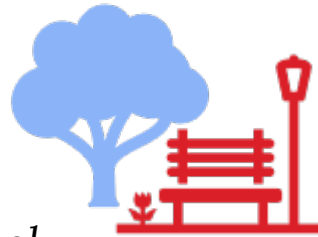
- Community enjoys natural grass; however, combination of natural/ artificial works if it accommodates more of the communities' desires

### Courts



- 2 tennis/ 2 basketball
- Painted games for kids a plus, but not too busy
- Keep close to Mason School

### General



- Prioritize needs of neighborhood youth/ schools
- More water fountains, benches
- Eating/ picnic area
- Shaded team seating
- Designated spaces for team storage & portable restrooms
- Fitness equipment and walking loop important
- Crosswalk lights and blue lights
- Maintain open feel to the park; minimize high fences

### Playground



- Want expanded, accessible playground
- Splash pad but separated from playground

# WHAT WE HEARD

## SCHOOLS

---

### Mason School

- Will use basketball courts at recess; locate near playground
- Walking loop shouldn't go through playground
- Larger play areas to accommodate school use; separate areas for younger/older kids
- Separate water play from playground

### Mason School Students

- Bright and colorful
- Inclusive, all ages
- Climbing, Swinging, Spinning
- Shade/water for hot days
- Use their imagination
- Big slides
- Places to draw with chalk
- Artist theme

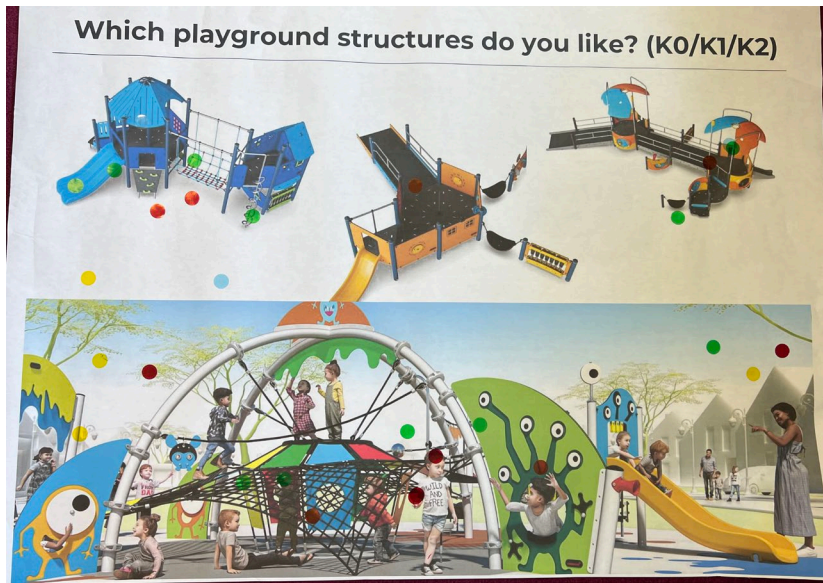
### Boston Public Schools

- Preferred concept #2 with synthetic turf
- Would only use courts for practice; not games

### Roxbury Prep

- Preferred concept #2 with synthetic turf
- Would use soccer & football
- Scoreboards for each for each sport

# MASON SCHOOL DESIGN WORKSHOP



Incorporated discussion on how the following careers contribute to designing a new park:

- Ecologist
- GIS Analyst
- Civil Engineer
- Landscape Architect
- Urban Designer
- Resilience Planner

# PARK ELEMENTS & DISCUSSION

Site Circulation

Site Entrances and Perimeter Fences

Seating and Shading

Planting

---

Plaza and Water Play

Outdoor Fitness

Playground Equipment

Sport Courts & Court Amenities

Field Layouts & Field Amenities

---

Dog Park

Additional Site Amenities



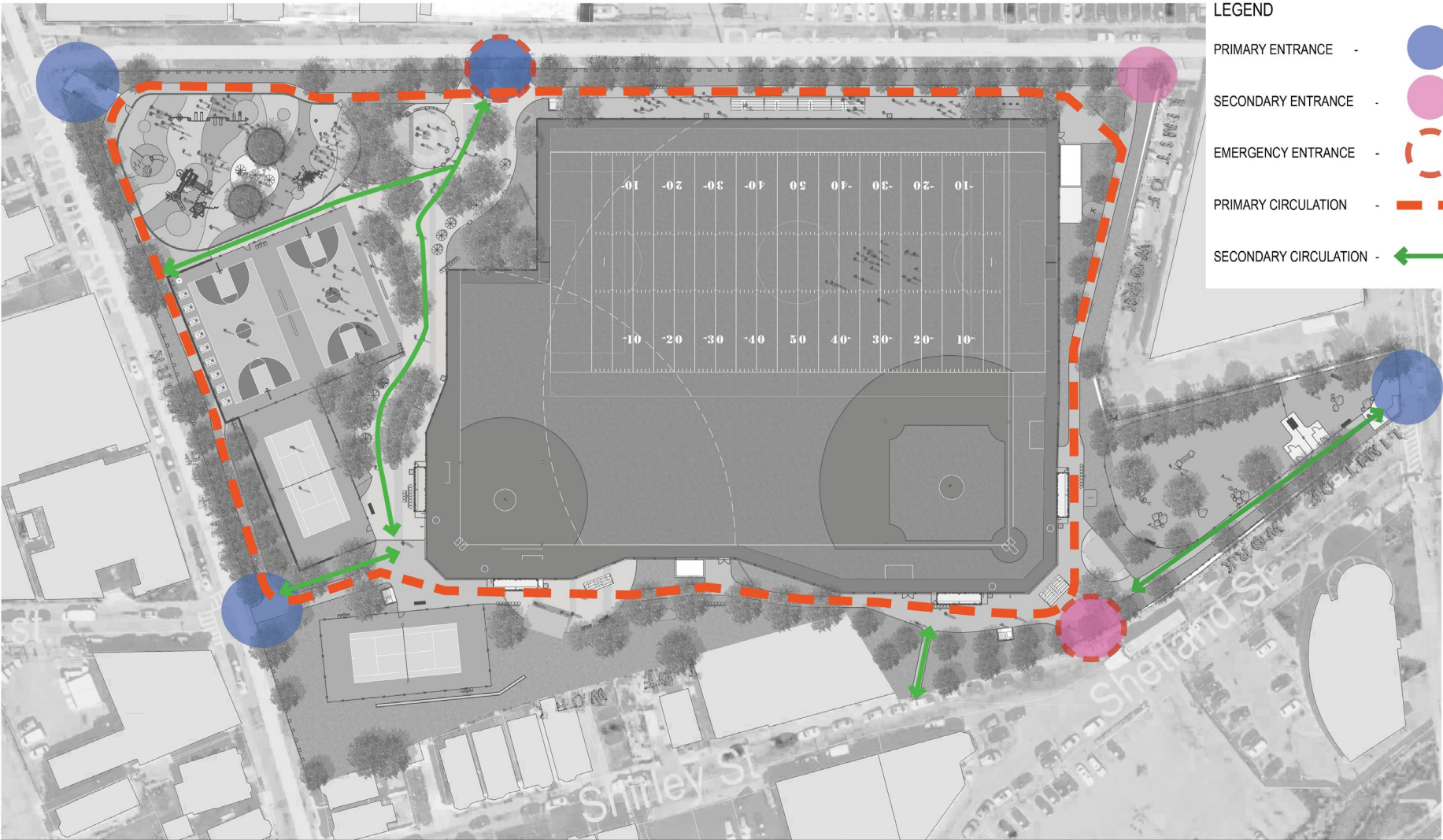
# FINAL SCHEMATIC DESIGN

---

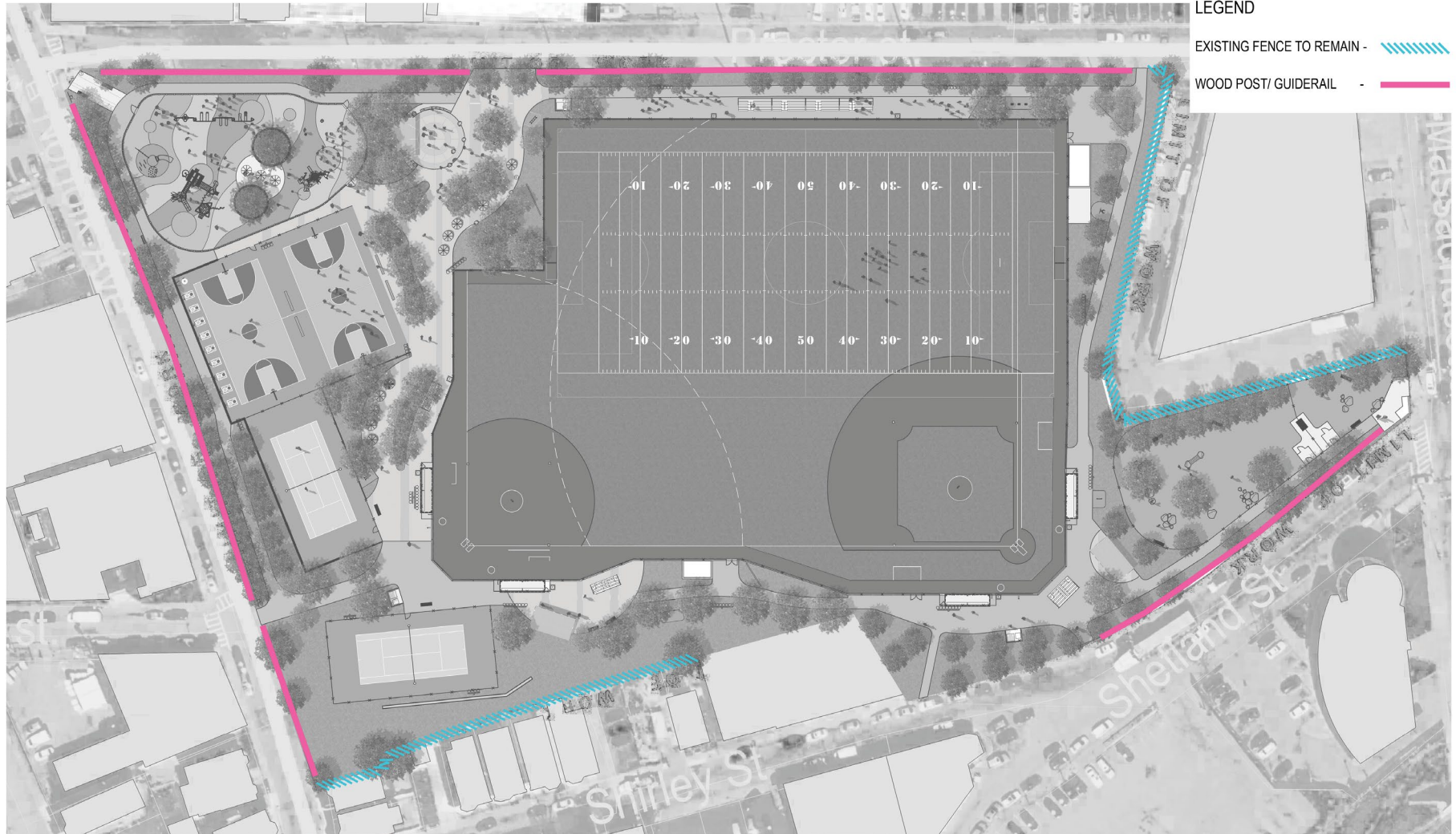




# SITE CIRCULATION



# PERIMETER FENCES





# PERIMETER FENCES

---





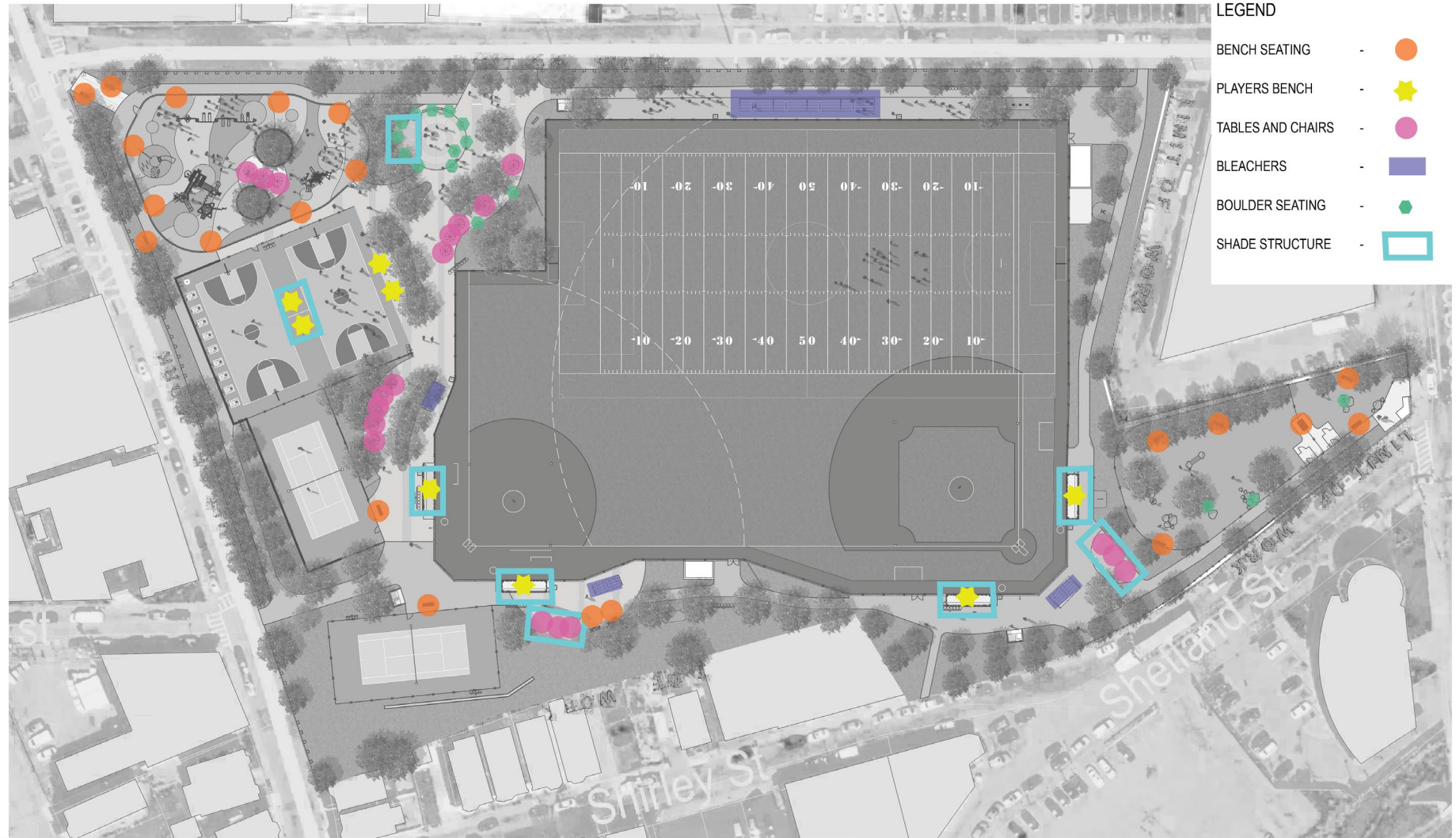
# GATEWAYS

---



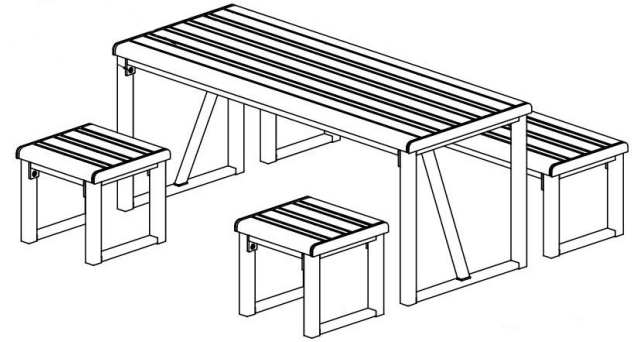


# SEATING & SHADING



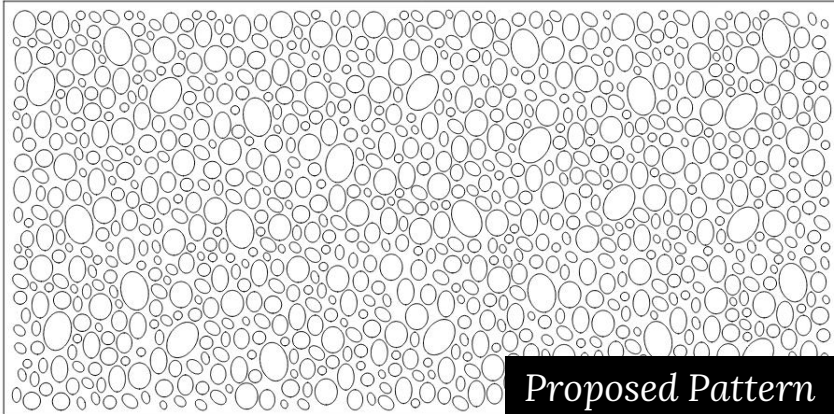
# SITE SEATING

---





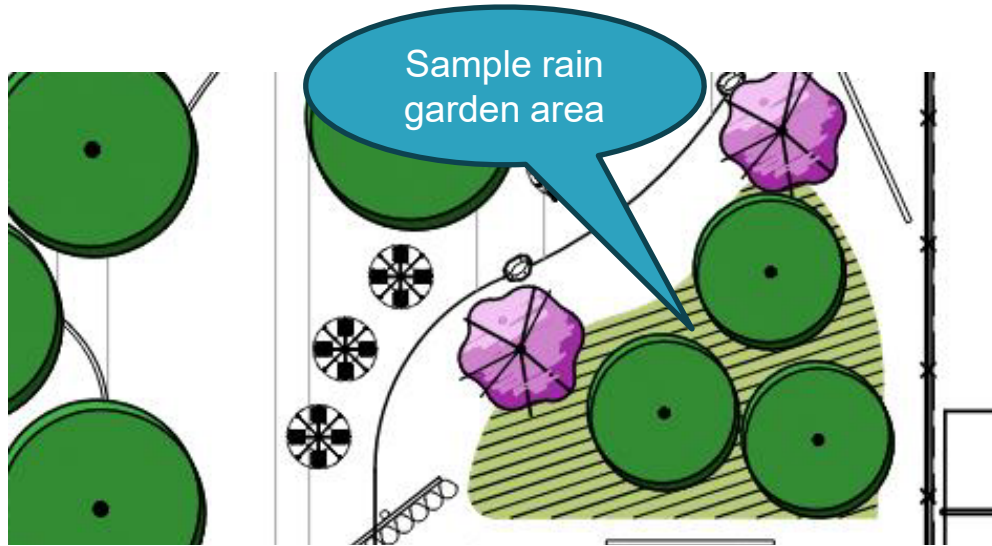
# SHADING



*Proposed Pattern*



# GREEN INFRASTRUCTURE





# PLANTING



*Tulip Tree*



*Horse Chestnut*



*Dawn Redwood*



*Serviceberry*



*Red Maple*



# PLAZA





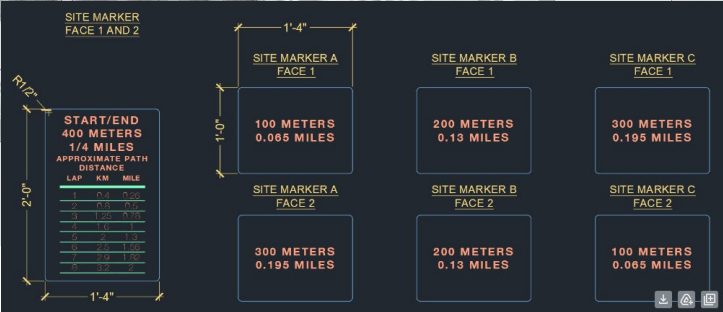
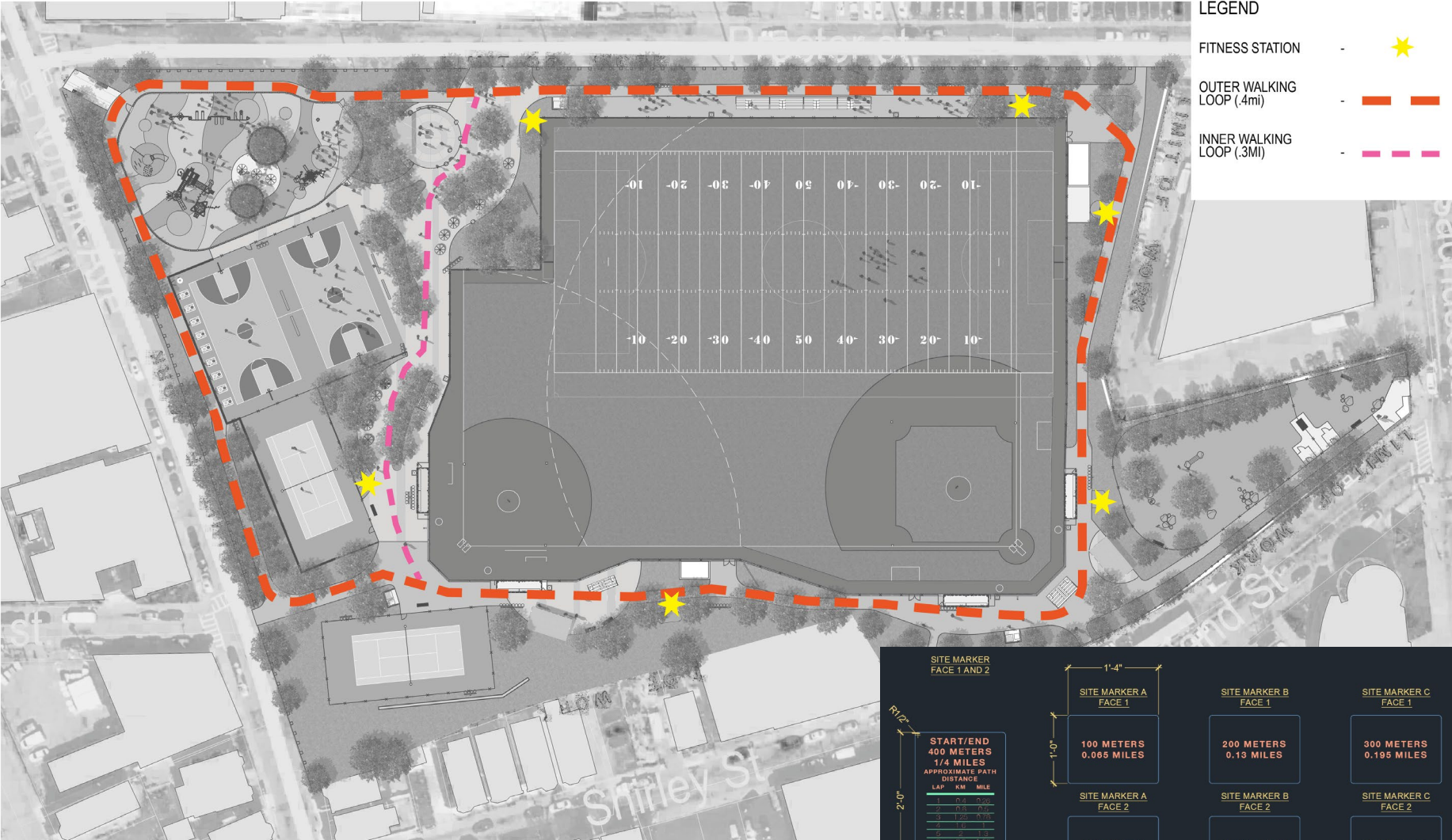
# WATER PLAY

---





# OUTDOOR FITNESS

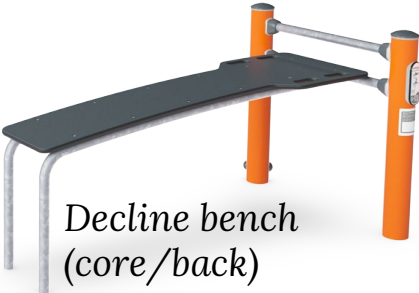


Example distance markers

# OUTDOOR FITNESS



COLOR OPTIONS



Decline bench  
(core/back)



Push up  
bars



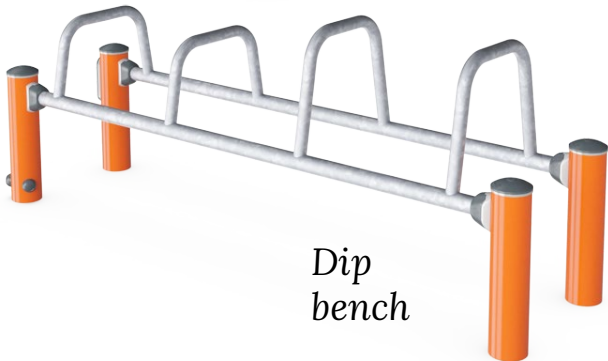
Step/  
jump up



Incline  
press &  
pull up



Leg lift &  
pull up



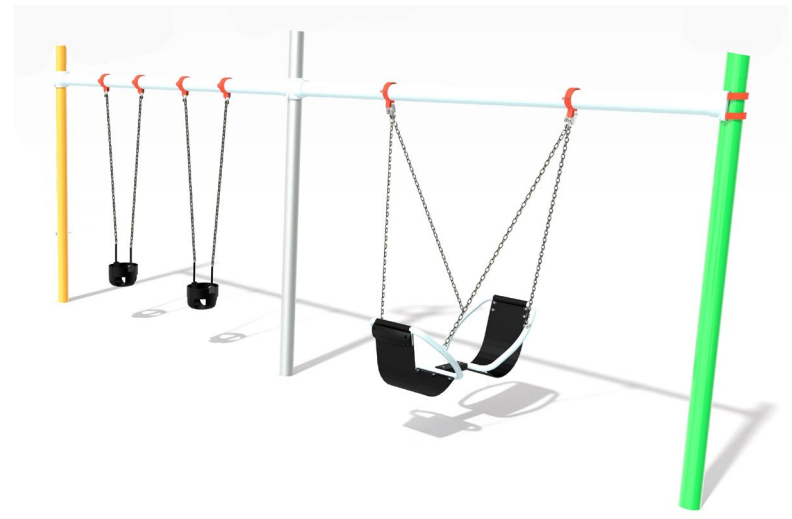
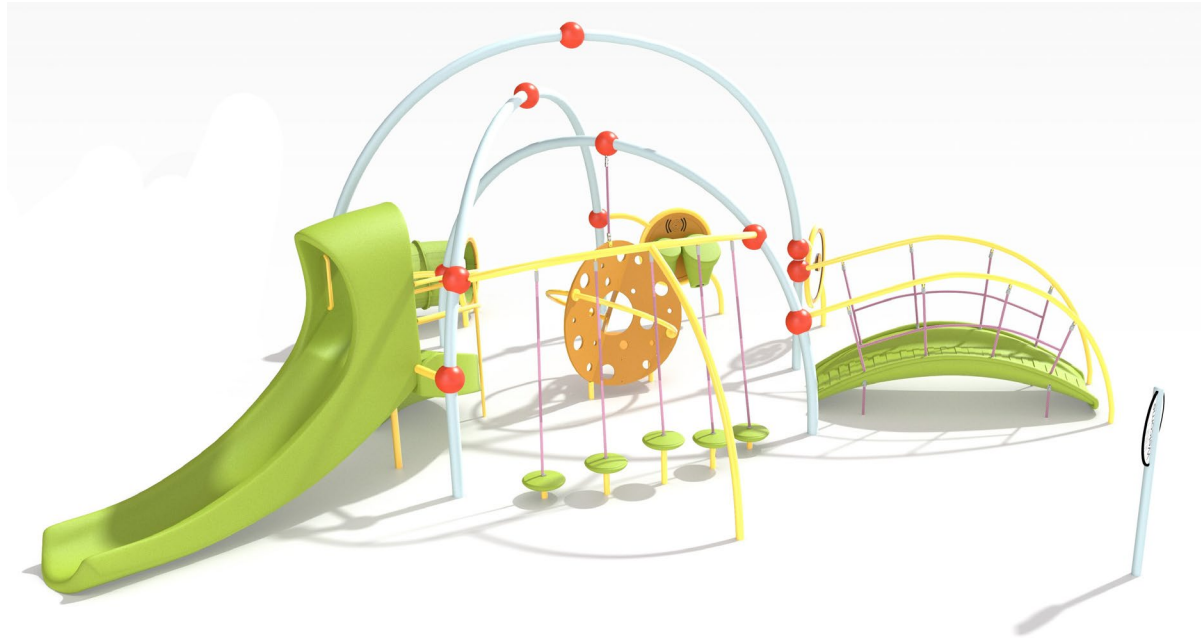
Dip  
bench



Equipment signs show  
most relevant  
activities and QR code  
for additional  
exercises

# PLAYGROUND DETAIL – 2-5 Years

---





# PLAYGROUND DETAIL – 5-12 Years

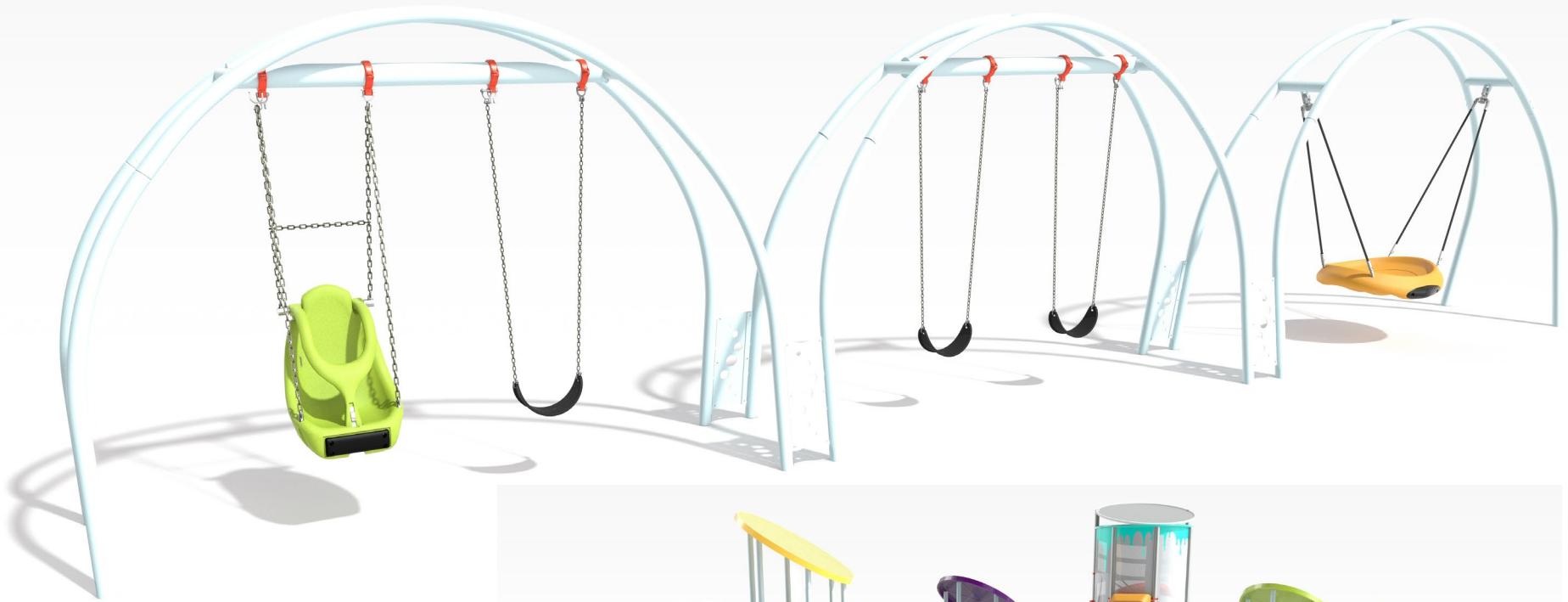
---



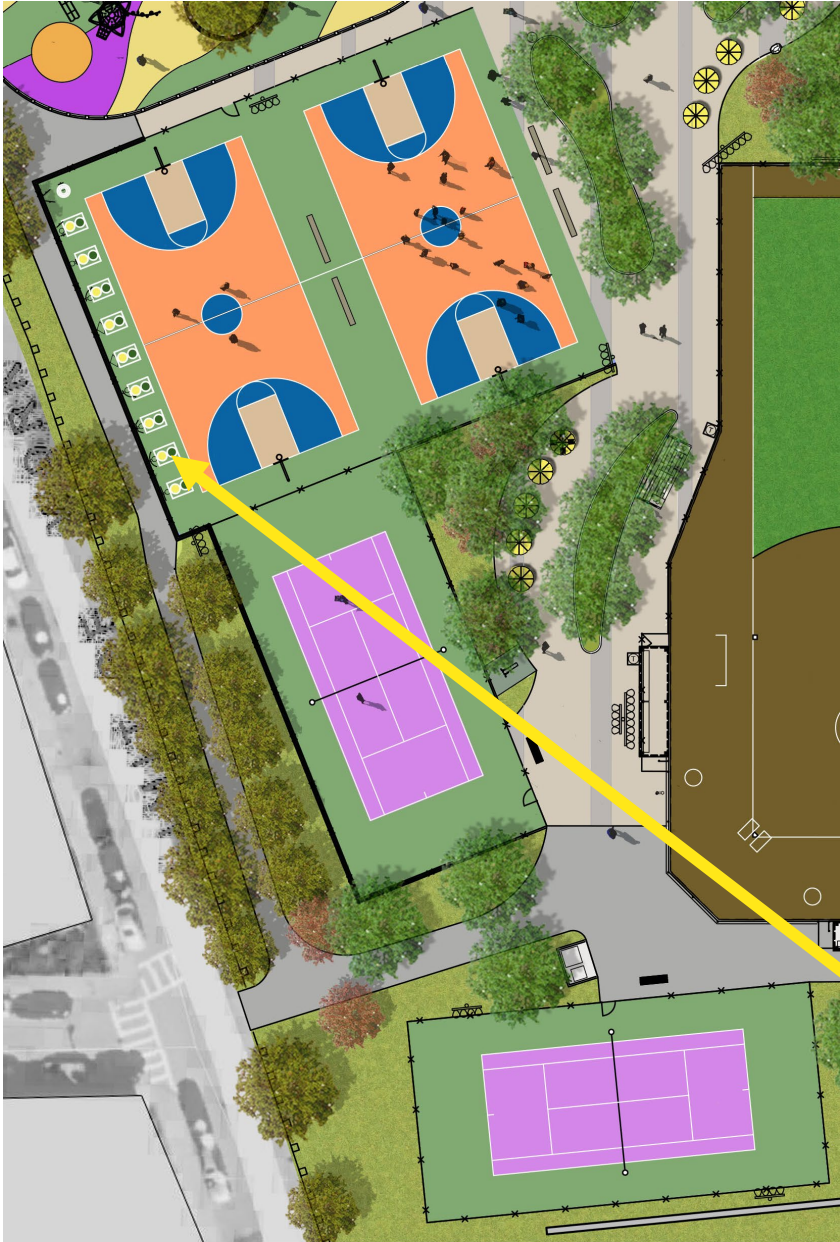


# PLAYGROUND DETAIL – 5-12 Years

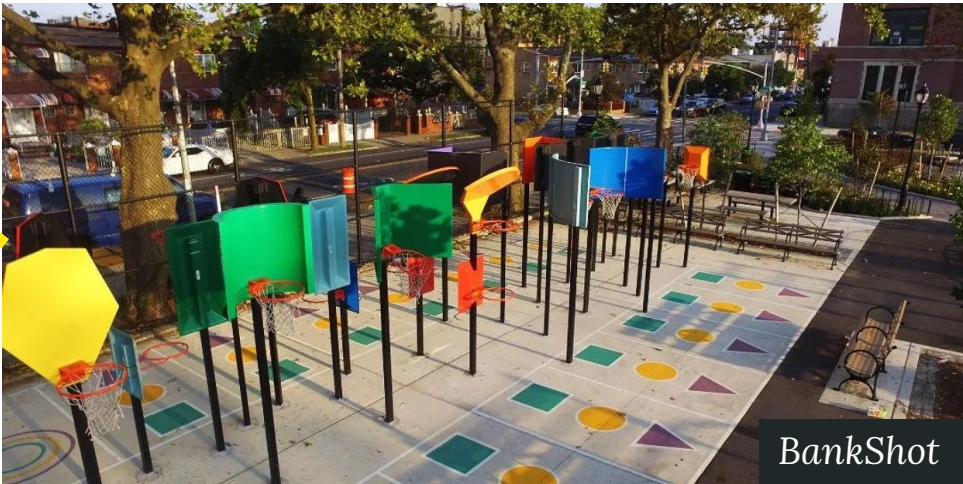
---



# SPORT COURTS



Station #	Name	Icon	Boards	Board Shape(s)
1	Straight Away		1	Kite
2	Either		1	3-Panel
3	Bank Down		1	Fan Forward
4	Wrap Around - Left		1	Large Curve
5	Wrap Around - Right		1	Large Curve
6	Chute		1	Square-capped
7	Any		1	Half-Round
8	Double Roll Back		1	Fan Back
9	Slant Back - Left		1	Kite
10	Black Hole		1	Kite
			1	Square-capped









# SPORT COURTS



## LEGEND

- 10'H CHAIN LINK FENCE - 
- 4'H CHAIN LINK FENCE - 
- GATE/ACCESS - 
- SCOREBOARD - 



Typical Basketball Court Fence



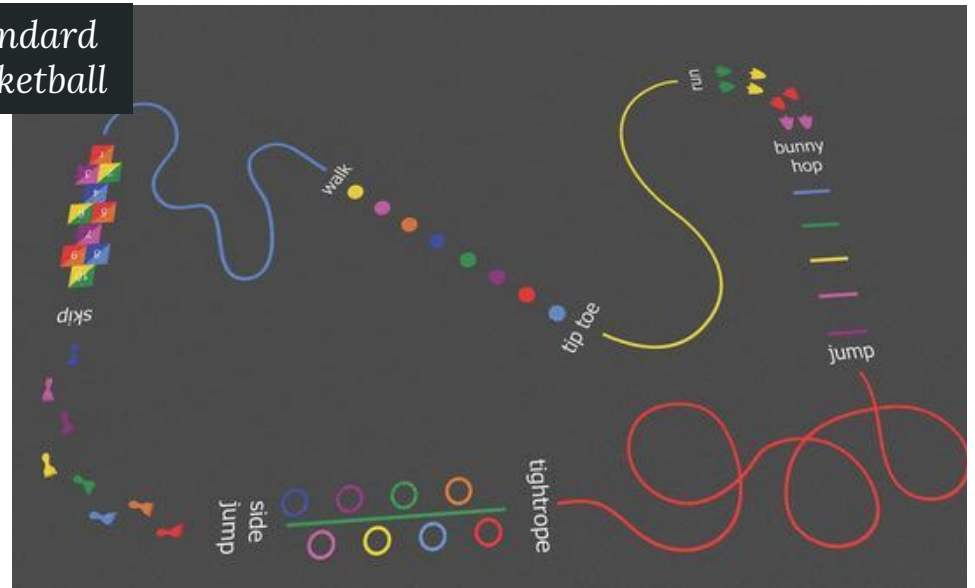
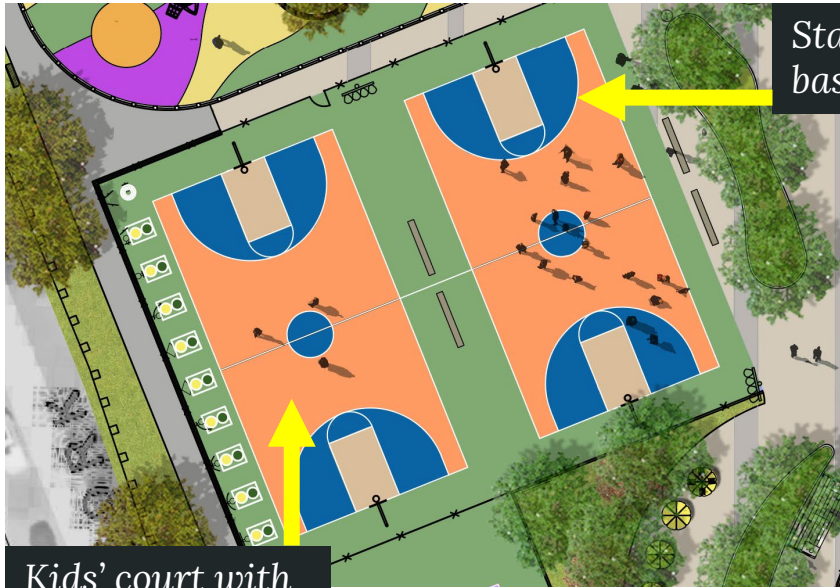
Typical Tennis Court Fence



Basketball Scoreboard



# PAINTED ACTIVITIES

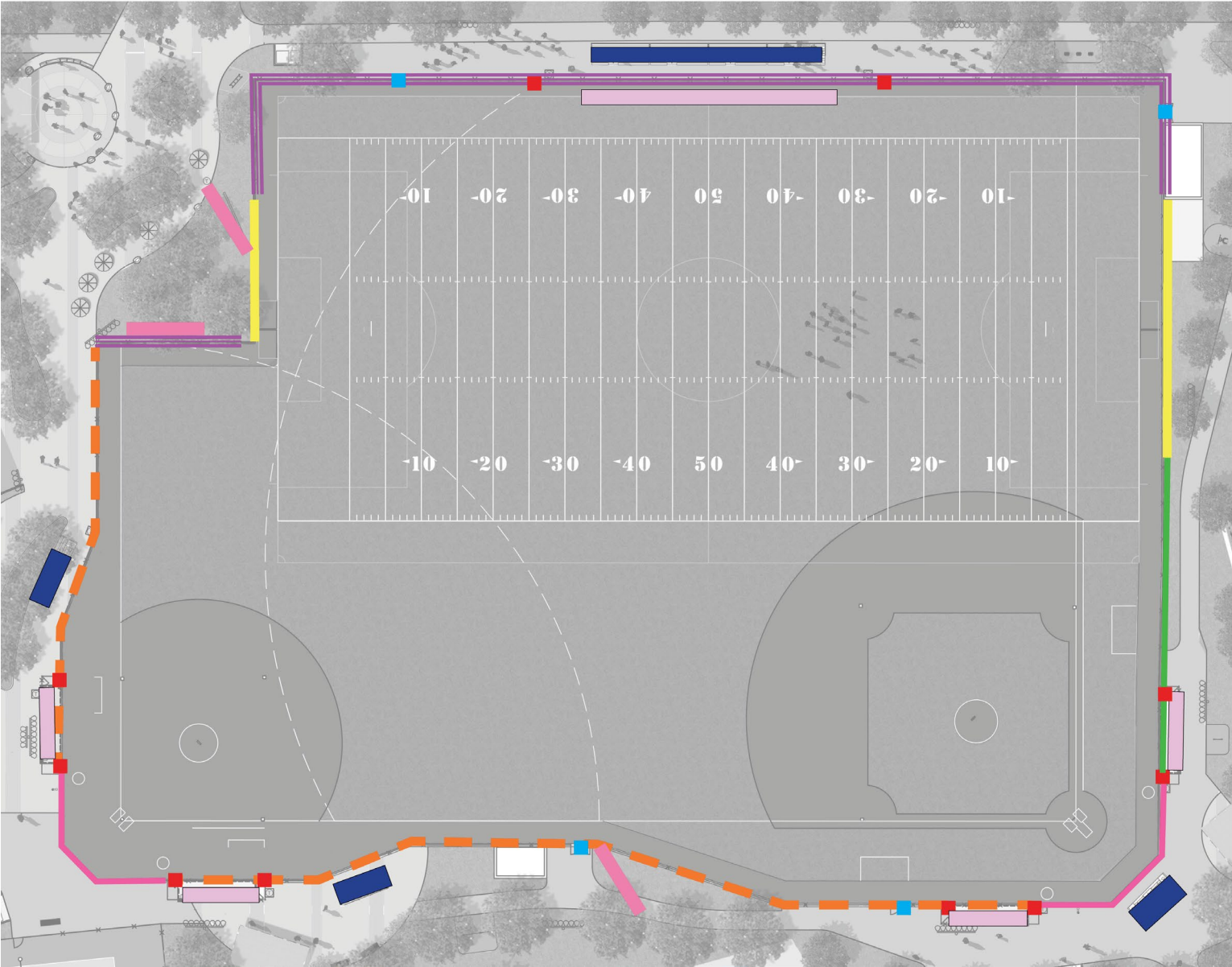


# ATHLETIC FIELDS





# ATHLETIC FIELD FENCING & SEATING



- LEGEND**
- 4'H CHAIN LINK FENCE -
  - 40' H BALL NETTING WITH 6' H CHAIN LINK -
  - 8'H CHAIN LINK FENCE -
  - CHAIN LINK BACKSTOP -
  - FOOTBALL GOAL NETTING WITH 4'H CHAIN LINK -
  - GATE/ACCESS -
  - VEHICLE GATE/ACCESS -
  - SPECTATOR SEATING -
  - TEAM SEATING -
  - SCOREBOARD -



# ATHLETIC FIELD SEATING & SCOREBOARDS



Football/soccer  
field bleachers



Football/soccer  
field team bench



Baseball/softball  
dugouts



Baseball/softball  
bleachers

BALL			2	STRIKE			1	OUT			1
DAKTRONICS											
	1	2	3	4	5	6	7	8	9	RUNS	
GUEST	1	0	0	0	0	1	0	0	0	2	
HOME	0	0	2	0	1	3	0	0		6	

Baseball/softball  
scoreboard

HOME				DAKTRONICS				GUEST			
2	1	<		7:23	.				14		
3	DOWN	TO GO	BALL ON	QTR				3			
T.O.L.	1	10	40	3				T.O.L.			

Football/Soccer  
scoreboard

# ATHLETIC FIELD AMENITIES

---



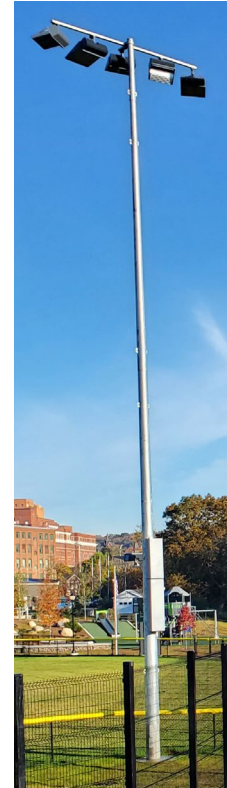
Football/soccer  
goals



Football goal  
netting



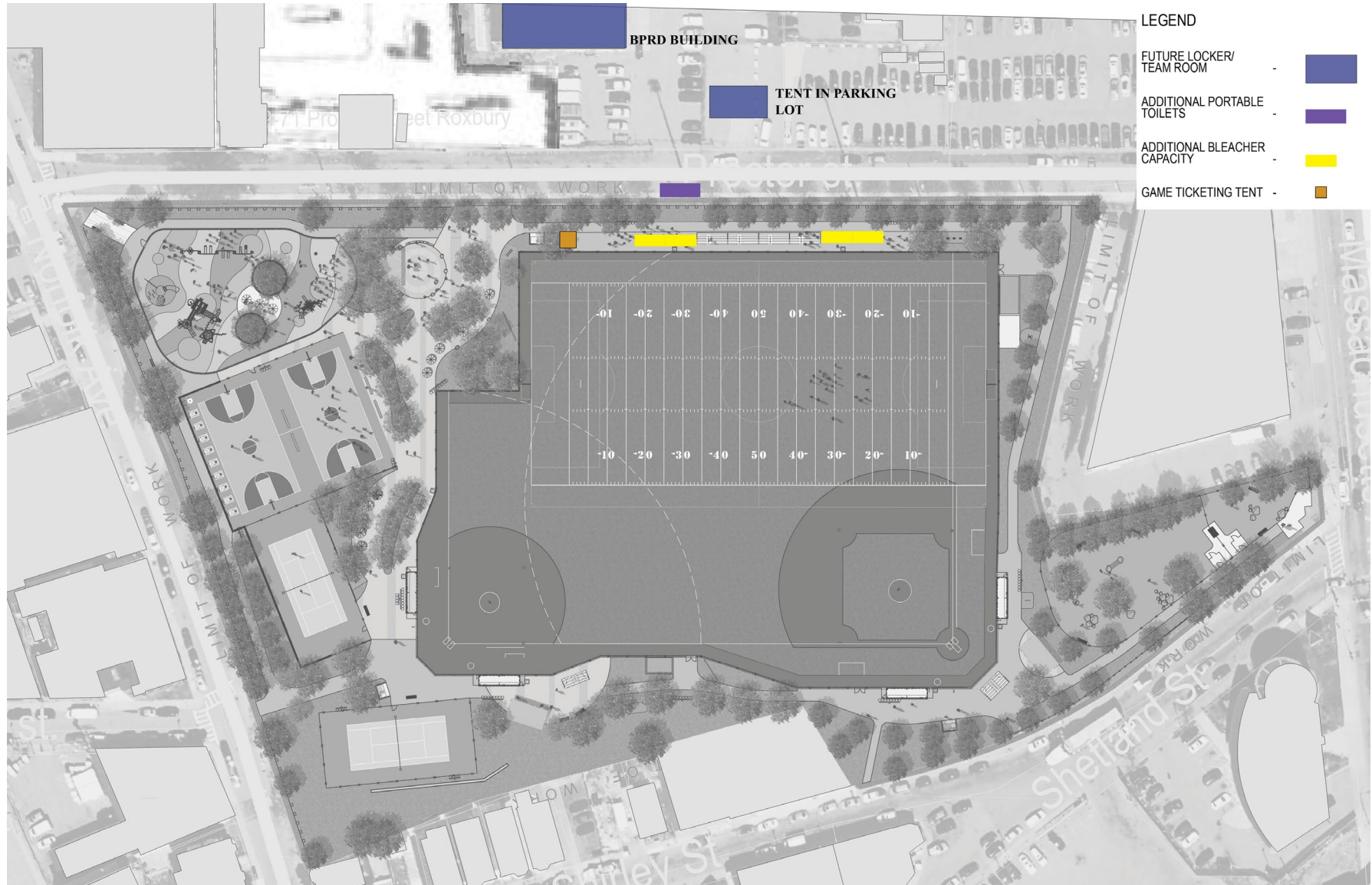
Ball safety  
netting



Field and court  
lighting



# POTENTIAL ADDITIONAL ATHLETIC AMENITIES



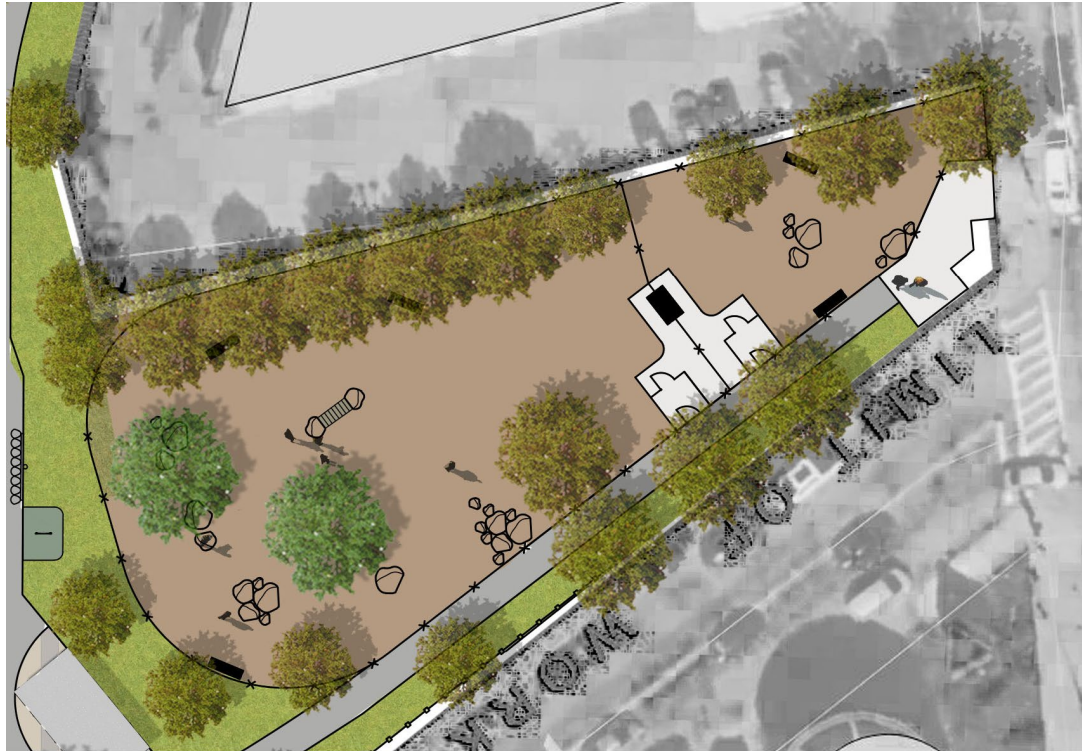


# STORAGE & PORTABLE TOILETS





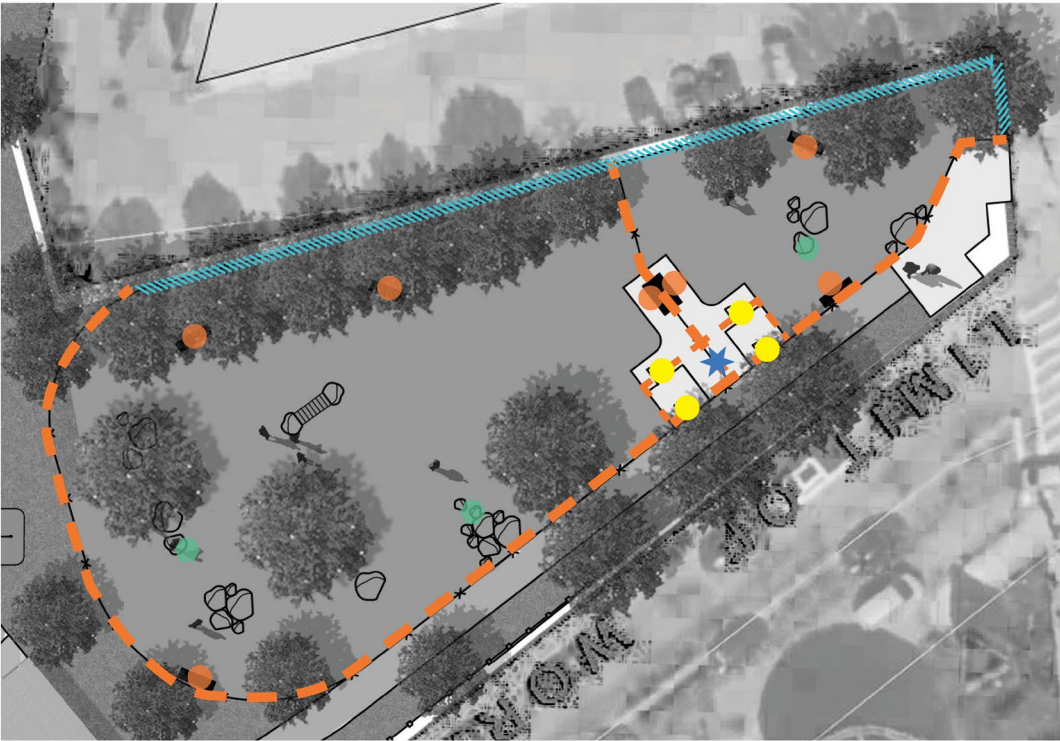
# DOG PARK



PLAY & AGILITY POWERED BY  
GYMS FOR DOGS.COM



# DOG PARK



- LEGEND
- 5' CHAIN LINK FENCE - [dashed orange line]
  - EXISTING FENCE - [blue hatched line]
  - GATE/ACCESS - [yellow circle]
  - WATER FOUNTAIN - [blue star]
  - BENCH SEATING - [orange circle]
  - BOULDER SEATING - [green hexagon]



# ADDITIONAL PARK AMENITIES

---



*With/without  
dog bowl*





# NEXT STEPS

## **Summer/Fall 2024**

*Design Development  
+ Construction  
Documents*

## **Late Fall 2024**

*Construction Begins  
(approx. 12 months of  
construction  
anticipated)*

## PROJECT INFORMATION

**Website:** <https://www.boston.gov/departments/parks-and-recreation/improvements-clifford-playground>

**Project Manager:** Lauren Bryant, [Lauren.Bryant@boston.gov](mailto:Lauren.Bryant@boston.gov) or 617-961-3019