

Fidelis Way/
OVERLOOK PARK



VIRTUAL MEETING ETIQUETTE

We want to ensure this conversation is a pleasant experience for all and that all community members/stakeholders are comfortable sharing their comments, questions and feedback.

Please be respectful and mindful of each other's time when asking questions/ providing comments, so that all attendees are able to participate in the meeting.

Keep questions/ comments project-specific and not personal to yield solution-driven discussion.

Please wait until all attendees have had the opportunity to ask a question/ provide a comment before providing additional questions/ comments.

You can always set up a conversation with Max Sell, max.sell@boston.gov, to further discuss the project or process.

ZOOM TIPS

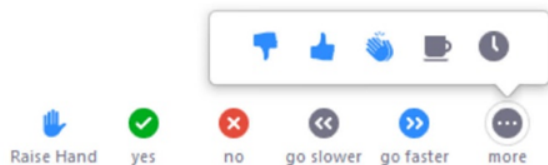
Here is how you can participate during the question and answer part of the presentation.

DURING THE PRESENTATION:



VIA WEB:

Turn video on / off.



To use these non-verbal options click on participants (bottom of screen); these options will pop up in side bar.

DURING THE Q&A:



JOINING VIA PHONE?

Use *9 to raise hand to ask for audio / video permission to ask questions or provide comments.



VIA WEB:

Chat to ask questions / comments or provide responses to poll questions



Raise hand to ask for audio / video permission to ask questions or provide comments.

MEETING RECORDING



The Boston Parks and Recreation Department will be recording the meeting and posting to our project webpage for those who are unable to attend the Zoom meeting live.

It is possible that participants may also be recording the meeting with their phones cameras or other devices. If you do not wish to be recorded during this meeting, please keep your microphone muted and camera off.

*Please share with your neighbors and friends, **PROJECT
WEBPAGE LINK.***

PROJECT OVERVIEW

A blue-tinted photograph of a playground. In the foreground, a large white slide with a red frame curves down to the right. To its left is a multi-level climbing structure with red vertical posts and yellow horizontal railings. A smaller slide is visible on the far left. The ground is covered in wood chips. In the background, there are bare trees and a multi-story brick building under a clear sky. The text 'PROJECT OVERVIEW' is overlaid in white, bold, sans-serif font in the upper left quadrant.

AGENDA

1

PROJECT TEAM INTRODUCTION

2

PROJECT OVERVIEW

3

PRESENTATION

4

LISTENING & DISCUSSION

5

CLOSING REMARKS & NEXT STEPS

PROJECT TEAM

Max Sell

PROJECT MANAGER

max.sell@boston.gov or 617-961-3097

My'Kel McMillen

OUTREACH COORDINATOR, EXTERNAL AFFAIRS

corey.mcmillen@boston.gov or 617-201-1294

Kevin L'Herrou

ALLSTON-BRIGHTON LIAISON, OFFICE OF NEIGHBORHOOD SERVICES

kevin.lherrou@boston.gov or 617-256-4437

David Andrews

PRINCIPAL, Brown, Richardson & Rowe

Samantha Morrow

ASSOCIATE, Brown, Richardson & Rowe

Adrienne Emmerich

DESIGNER, Brown, Richardson & Rowe

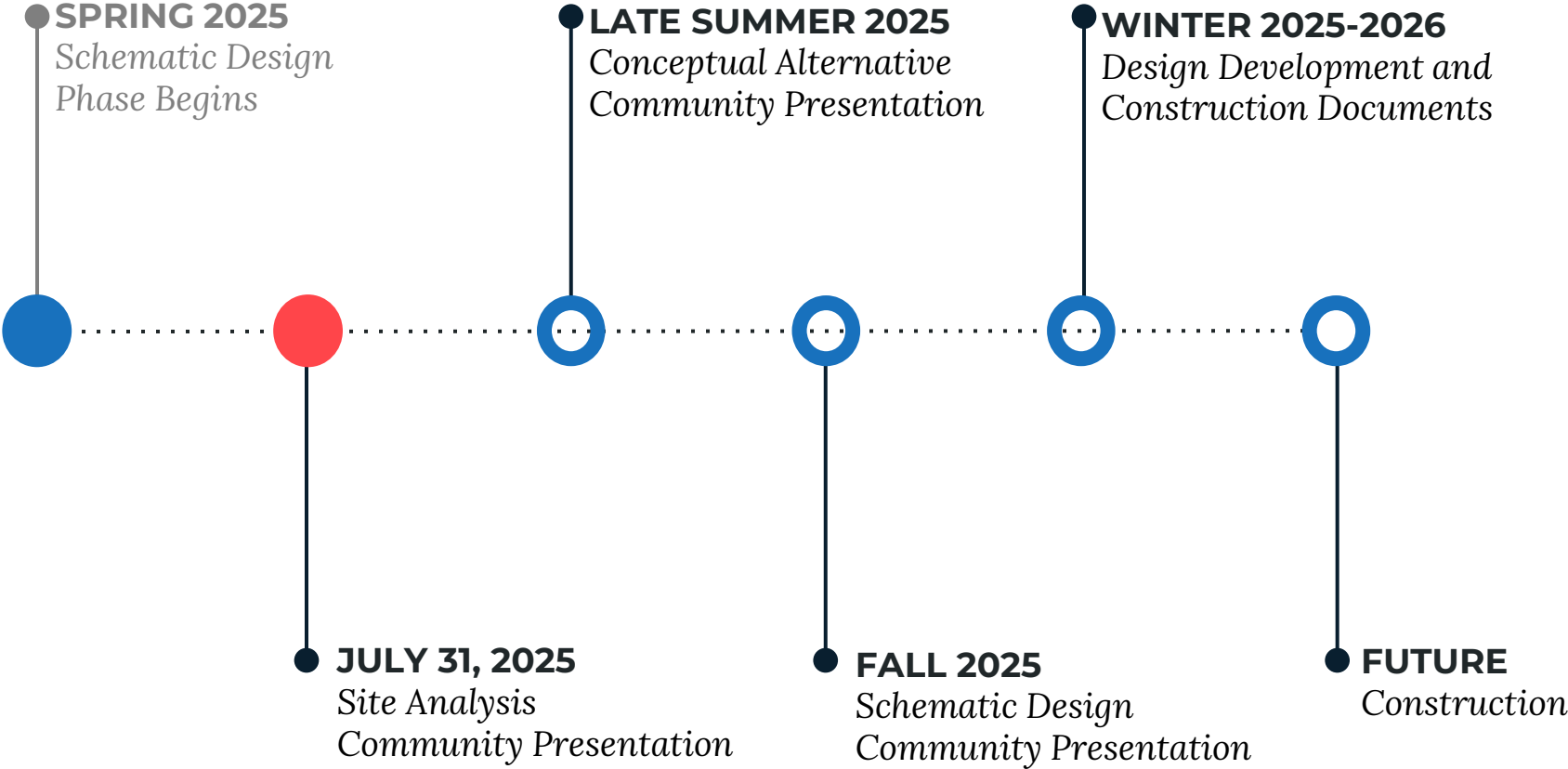


SPECIAL THANKS TO



Boston Children's Hospital

PROJECT SCHEDULE & FUNDING





CITY OF BOSTON PRIORITIES

- **Expanding walkable access to parks**
- **Addressing equity**
- **Climate resilience**
- **Health**
- **Housing and community building**



PARK & RECREATION GOALS

- **Accessible and available to all**
- **Diverse, balanced, and efficient mix of uses**
- **Meaningful and inclusive community engagement**
- **Adaptive and resilient landscapes**
- **Promote connections**

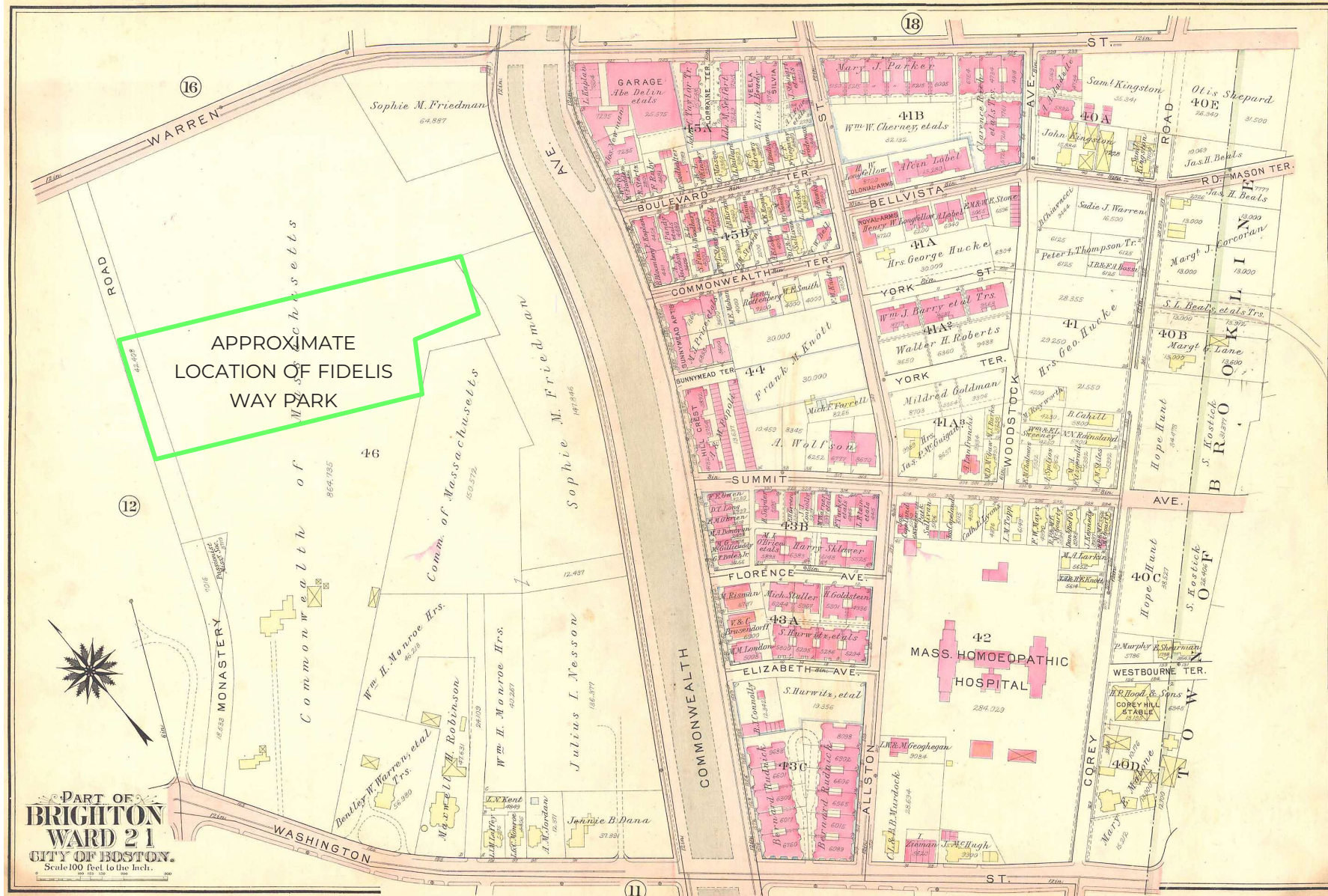


HISTORICAL ANALYSIS

A photograph of a playground with a large slide and climbing structure, overlaid with a blue tint. The text "HISTORICAL ANALYSIS" is written in white, bold, sans-serif capital letters across the center of the image. The background shows trees and a building.

CIRCA 1925

PLATE 17



FIDELIS WAY PARK HISTORY

CIRCA 1935



CIRCA 1975

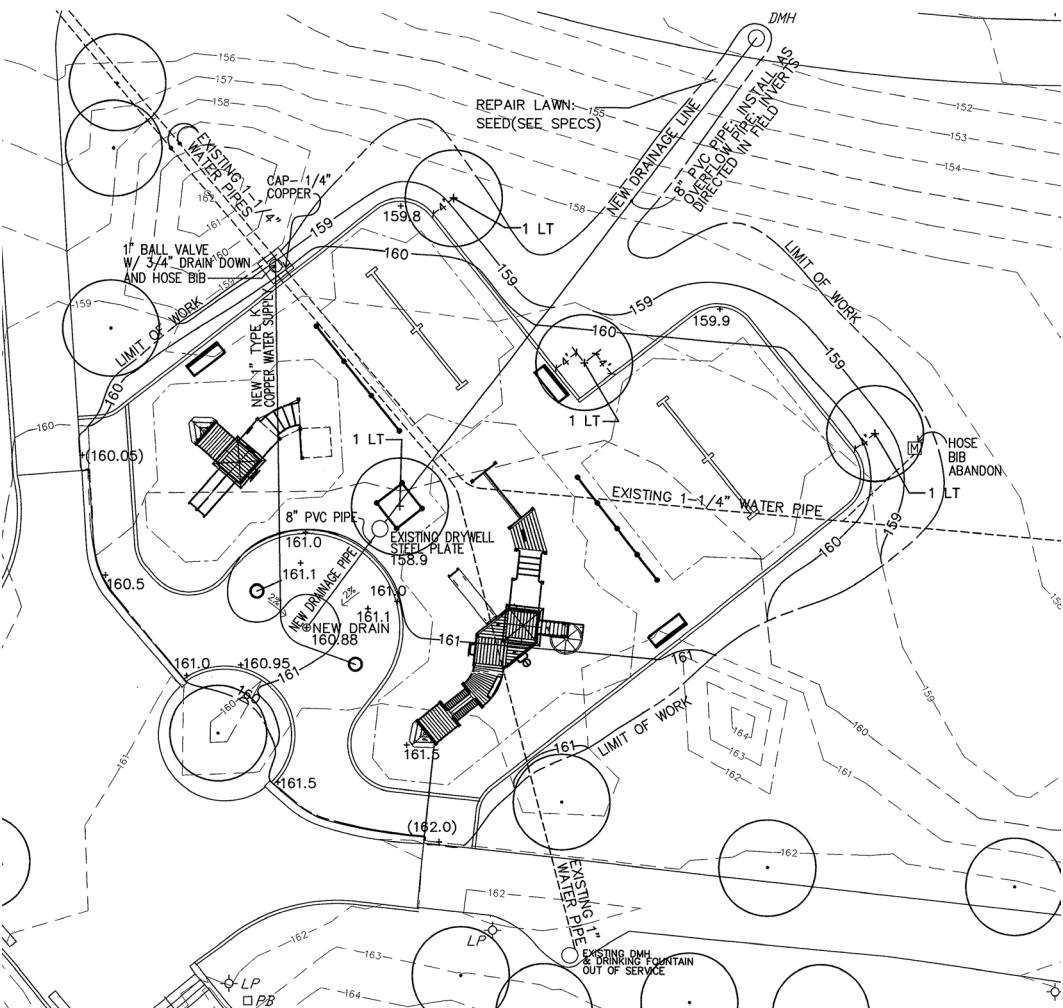
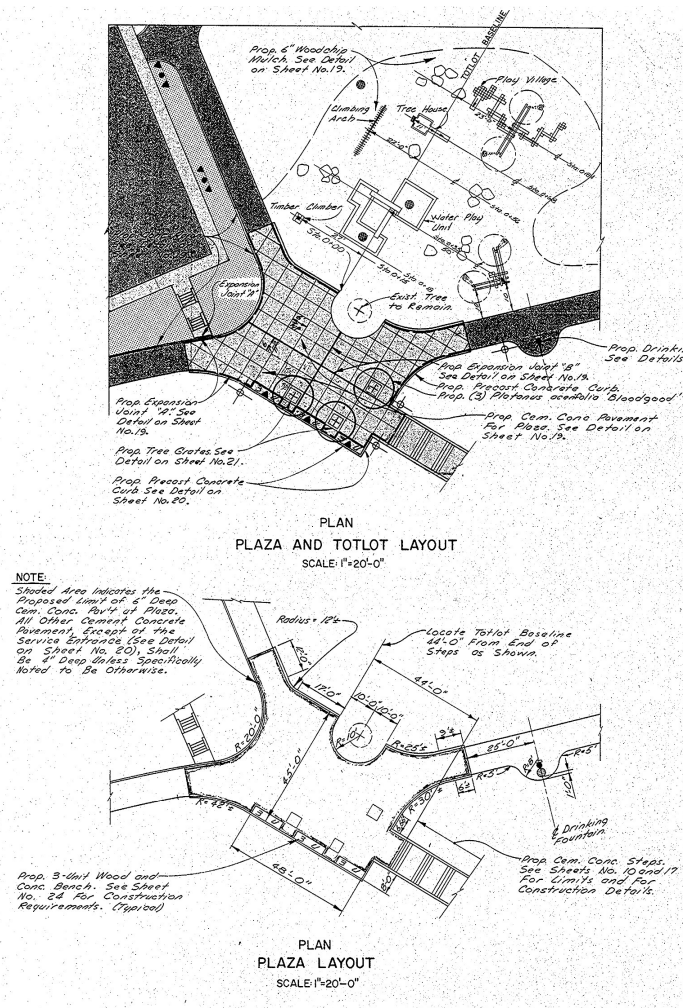


FIDELIS WAY PARK HISTORY

CIRCA 1993

1975

1993



NEIGHBORHOOD CONTEXT

A blue-tinted photograph of a playground. In the foreground, a large, light-colored slide curves down from a platform. The playground structure is made of dark brown or maroon vertical posts and yellow horizontal railings. To the left, another slide is partially visible. In the background, there are bare trees and a multi-story brick building with many windows. The sky is a pale blue.

FIDELIS WAY PARK LOCATION



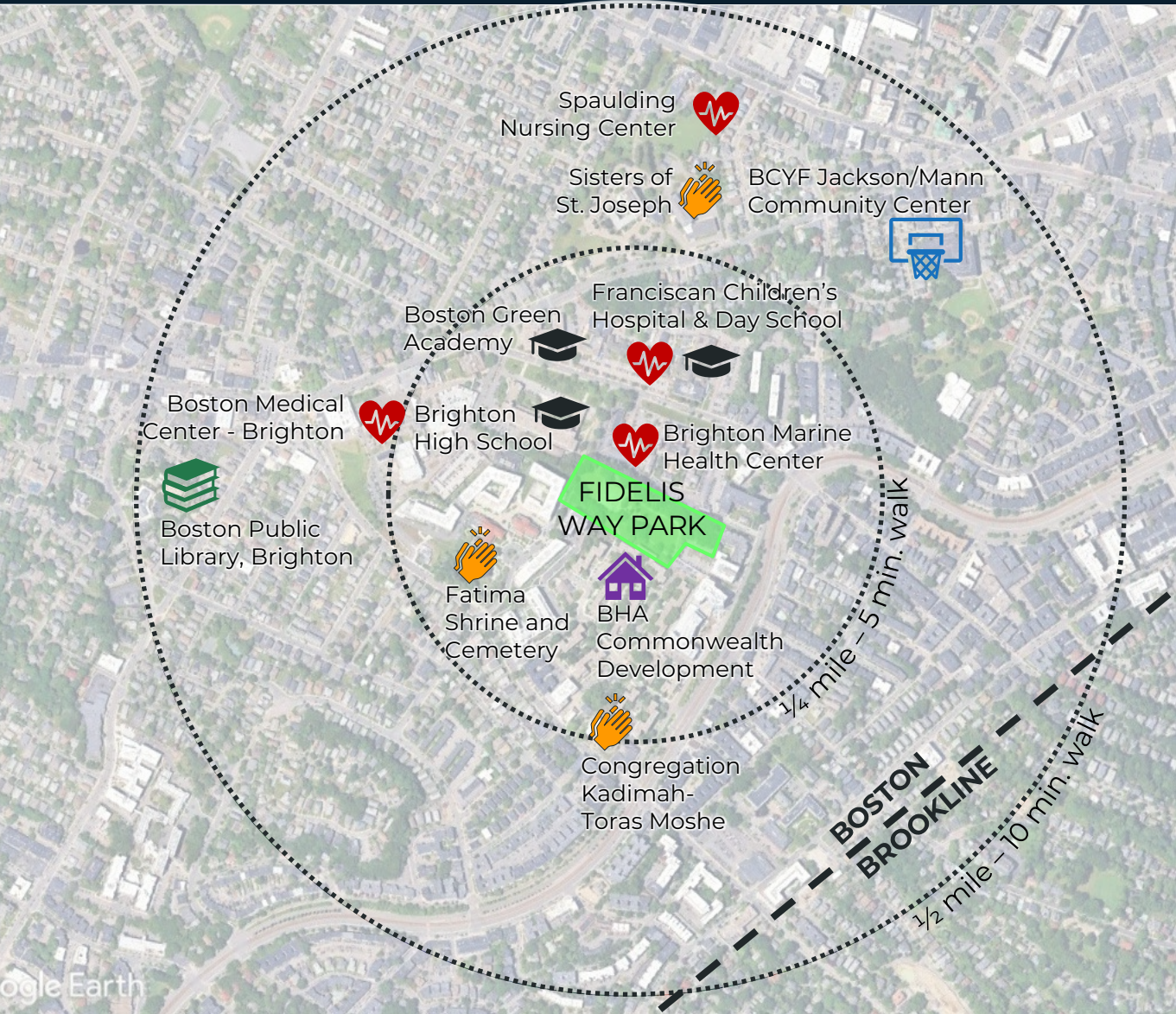
LEGEND

- 1** BRIGHTON MARINE HEALTH CENTER
- 2** BOSTON HOUSING AUTHORITY
COMMONWEALTH DEVELOPMENT
- 3** OVERLOOK APARTMENTS
FORMERLY ST. GABRIEL'S MONASTERY
- 4** BOSTON MEDICAL CENTER –
BRIGHTON
FORMERLY ST. ELIZABETH'S HOSPITAL
- 5** BRIGHTON HIGH SCHOOL



NEIGHBORHOOD CONTEXT

COMMUNITY INSTITUTIONS



LEGEND

- Healthcare
- School
- Religious Institution
- Public Housing
- Library
- Community Center



NEIGHBORHOOD CONTEXT

PARKS AND OPEN SPACE



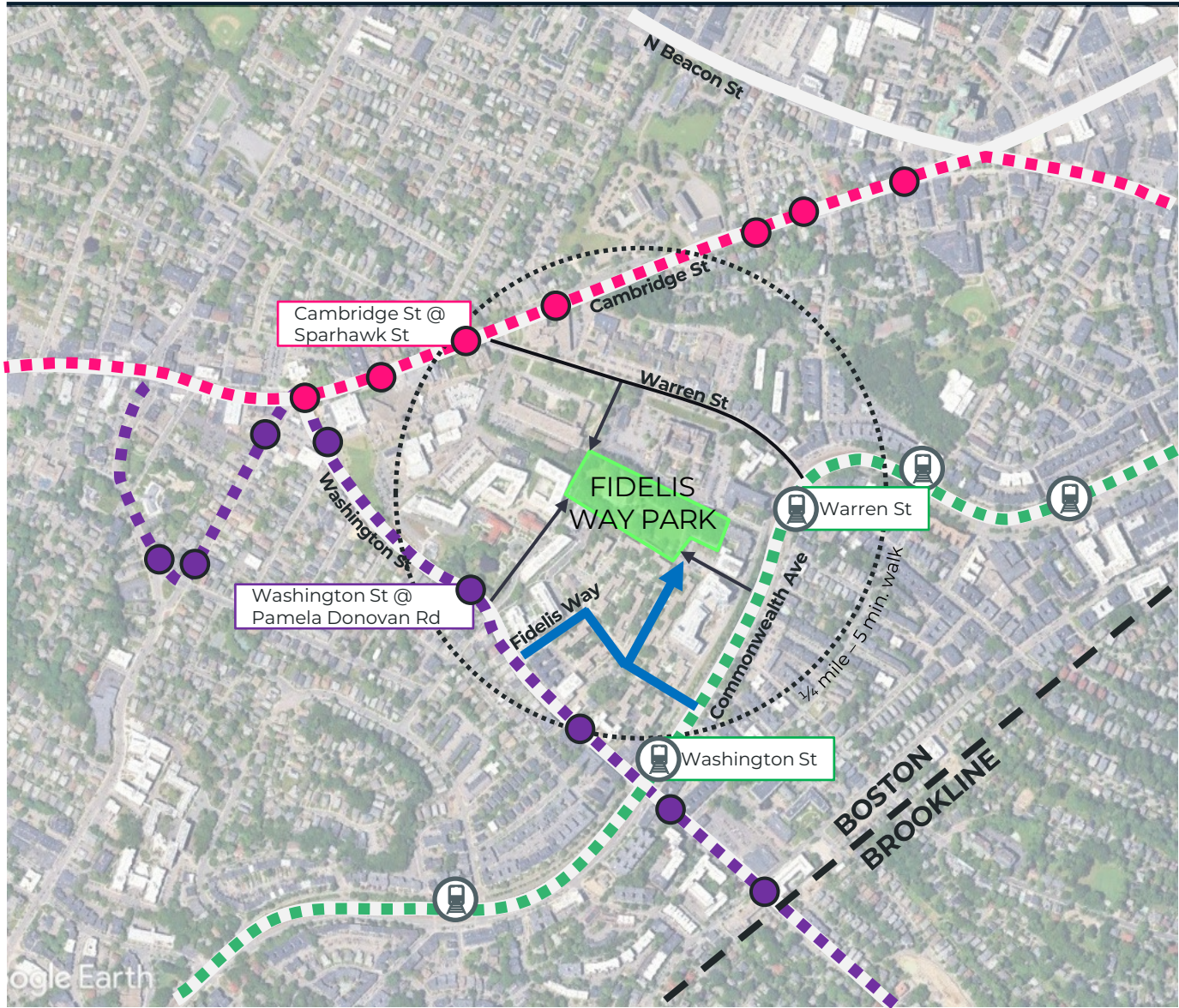
LEGEND

- 1** MCKINNEY PLAYGROUND
Sports, playground, swings
- 2** BRIGHTON COMMON
Stage, amphitheater
- 3** JOYCE PLAYGROUND
Playground, spray feature, sports, public art
- 4** THERESA HYNES PARK
Seating
- 5** RINGER PARK
Sports, playground, spray feature
- 6** BRIAN HONAN PARK
Lawn, seating
- 7** COREY HILL PLAYGROUND
Playground, spray feature, picnic tables, dog park



NEIGHBORHOOD CONTEXT

TRANSPORTATION



LEGEND

- Major Road
- 57 Bus Route
- 65 Bus Route
- Green Line B
- Bus Stop
- T Stop
- Pedestrian Route from Transit Line to Park Entrance
- Pedestrian/Vehicular Route to Parking Lot & ADA Entrance

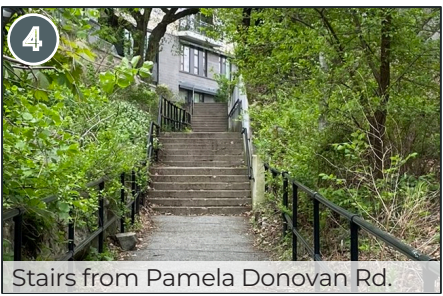


SITE ANALYSIS

A photograph of a playground with a large slide and climbing structure, overlaid with a blue tint and the text 'SITE ANALYSIS'. The playground equipment is made of metal and plastic, with a prominent white slide in the foreground. The background shows bare trees and a multi-story building under a clear sky.

SITE ANALYSIS

SITE ACCESS

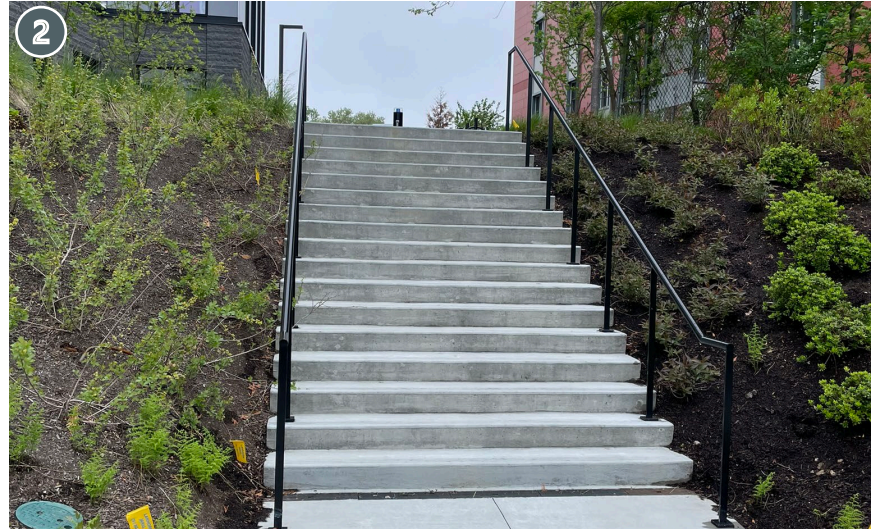


SITE ANALYSIS

SITE ACCESS IMAGES



Stairs from Warren St.



Stairs from Commonwealth Ave.



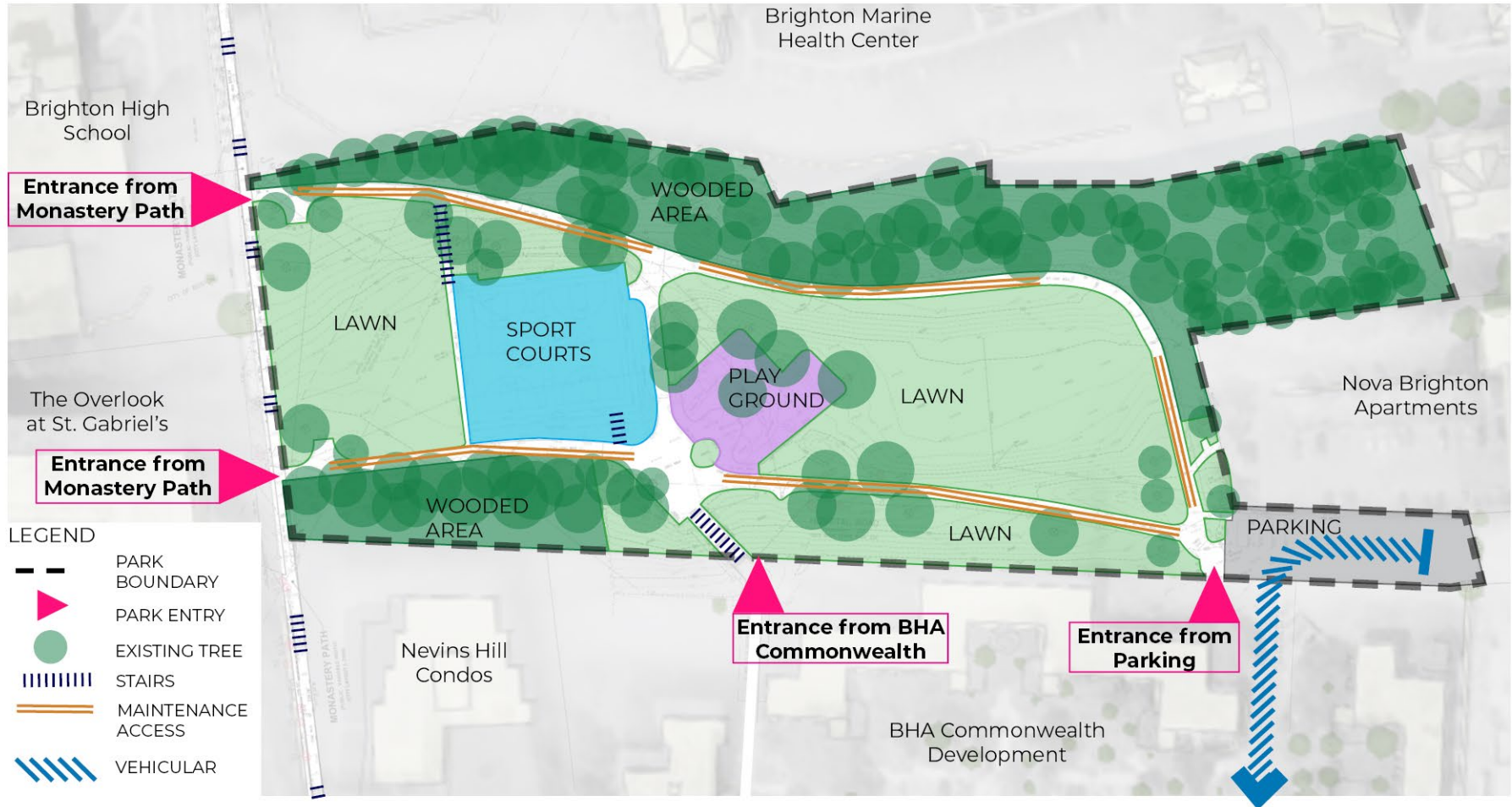
Stairs to Jette Ct.



Stairs from Pamela Donovan Rd. / Washington St.

SITE ANALYSIS

SITE ZONES, ENTRIES & CIRCULATION



SITE ANALYSIS

SITE AMENITY IMAGES



Existing Playground Equipment



Existing Toddler Swing Set



Existing Site Furnishings at Plaza Area



Existing Playground Equipment and Shade Trees

SITE ANALYSIS

SITE AMENITY IMAGES



Existing Cobble Edge and Stairs at Basketball Courts



Existing Cobble Edge at Basketball Courts



Existing Basketball Courts



Existing Basketball Backboards

SITE ANALYSIS

OPEN SPACE & TREE CANOPY



Lawn with Wooded Edge



Trees around Playground



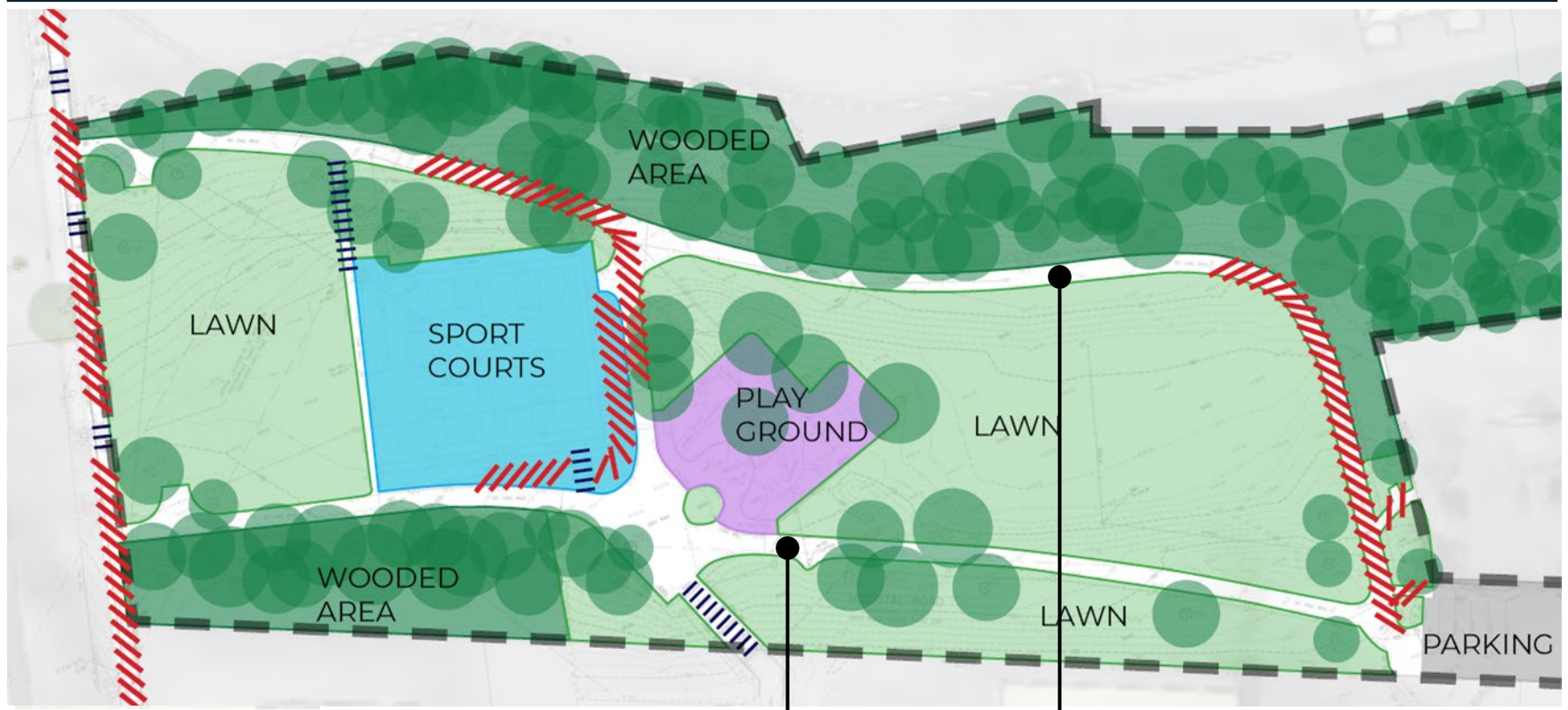
Sloped Lawn near BHA Commonwealth Development



Lawn Area at Monastery Path

SITE ANALYSIS

SLOPE ANALYSIS + DRAINAGE



LEGEND

- — PARK BOUNDARY
- EXISTING TREE
- |||| STAIRS
- /// SLOPE IN EXCESS OF ADA REQUIREMENTS



Puddling on on upper walkway



Washout on lower walkway





LISTENING & DISCUSSION

Help us build great parks.
Let us know what matters to you.

- **WHY DO YOU VISIT THE PARK?**
- **HOW DO YOU CURRENTLY USE THE EXISTING PARK AMENITIES
AND OPEN SPACES?**
- **DO YOU FEEL SAFE IN THE PARK?**
- **WHAT DO YOU LIKE ABOUT THE PARK?**
- **WHAT WOULD YOU CHANGE ABOUT THE PARK?**
- **WHAT ACTIVITIES WOULD YOU ADD TO THE PARK?**



THANK YOU!

Next Meeting Date & Time To Be Determined

For questions, maintenance requests or
concerns regarding any of our
parks contact 311



July 31, 2025 1Q'
Boston Parks and Recreation

