

Improvements to **DUDLEY TOWN COMMON**



Boston Parks and Recreation

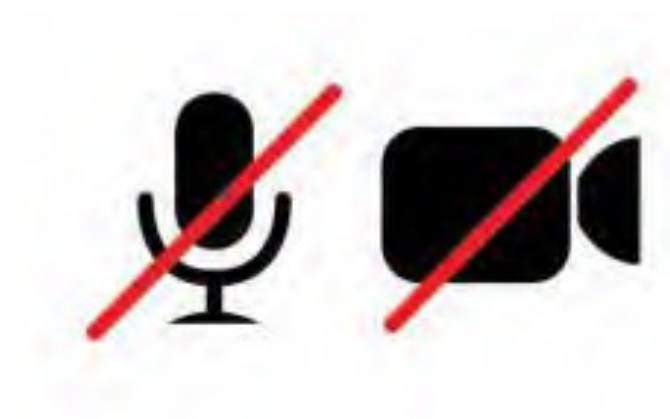


**CROWLEY
COTTRELL**

LANDSCAPE ARCHITECTURE

SCHEMATIC DESIGN CONCEPTS
AUGUST 28, 2025

MEETING RECORDING



The Boston Parks and Recreation Department will be recording the meeting and posting to our project webpage for those who are unable to attend the Zoom meeting live.

It is possible that participants may also be recording the meeting with their phones cameras or other devices. If you do not wish to be recorded during this meeting, please keep your microphone muted and camera off.

*Please share with your neighbors and friends,
boston.gov/dudley-common.*

VIRTUAL MEETING ETIQUETTE

We want to ensure this conversation is a pleasant experience for all and that all community members/stakeholders are comfortable sharing their comments, questions and feedback.

Please be respectful and mindful of each other's time when asking questions/ providing comments, so that all attendees are able to participate in the meeting.

Keep questions/ comments project-specific and not personal to yield solution-driven discussion.

Please wait until all attendees have had the opportunity to ask a question/ provide a comment before providing additional questions/ comments.

*You can always set up a conversation with **Priyanka Vankina**, priyanka.vankina@boston.gov , to further discuss the project or process.*

ZOOM TIPS

Here is how you can participate during the question and answer part of the presentation.

DURING THE PRESENTATION:



VIA WEB:

Turn video on / off.



To use these non-verbal options click on participants (bottom of screen); these options will pop up in side bar.

DURING THE Q&A:



JOINING VIA PHONE?

Use *9 to raise hand to ask for audio / video permission to ask questions or provide comments.



VIA WEB:

Chat to ask questions / comments or provide responses to poll questions



Raise hand to ask for audio / video permission to ask questions or provide comments.

AGENDA

1

PROJECT TEAM INTRODUCTION

2

PROJECT OVERVIEW

3

PRESENTATION

4

LISTENING & DISCUSSION

5

CLOSING REMARKS & NEXT STEPS

PROJECT TEAM

PRIYANKA VANKINA

Project Manager

priyanka.vankina@boston.gov or 617-961-3028

MY'KEL MCMILLAN

Community Outreach Coordinator

corey.mcmillen@boston.gov or 617-201-1294

ASHA JANAY

Office of Neighborhood Services

asha.janay@boston.gov

NAOMI COTTRELL

Principal, Crowley Cottrell

LEAH BRODER

Senior Associate, Crowley Cottrell

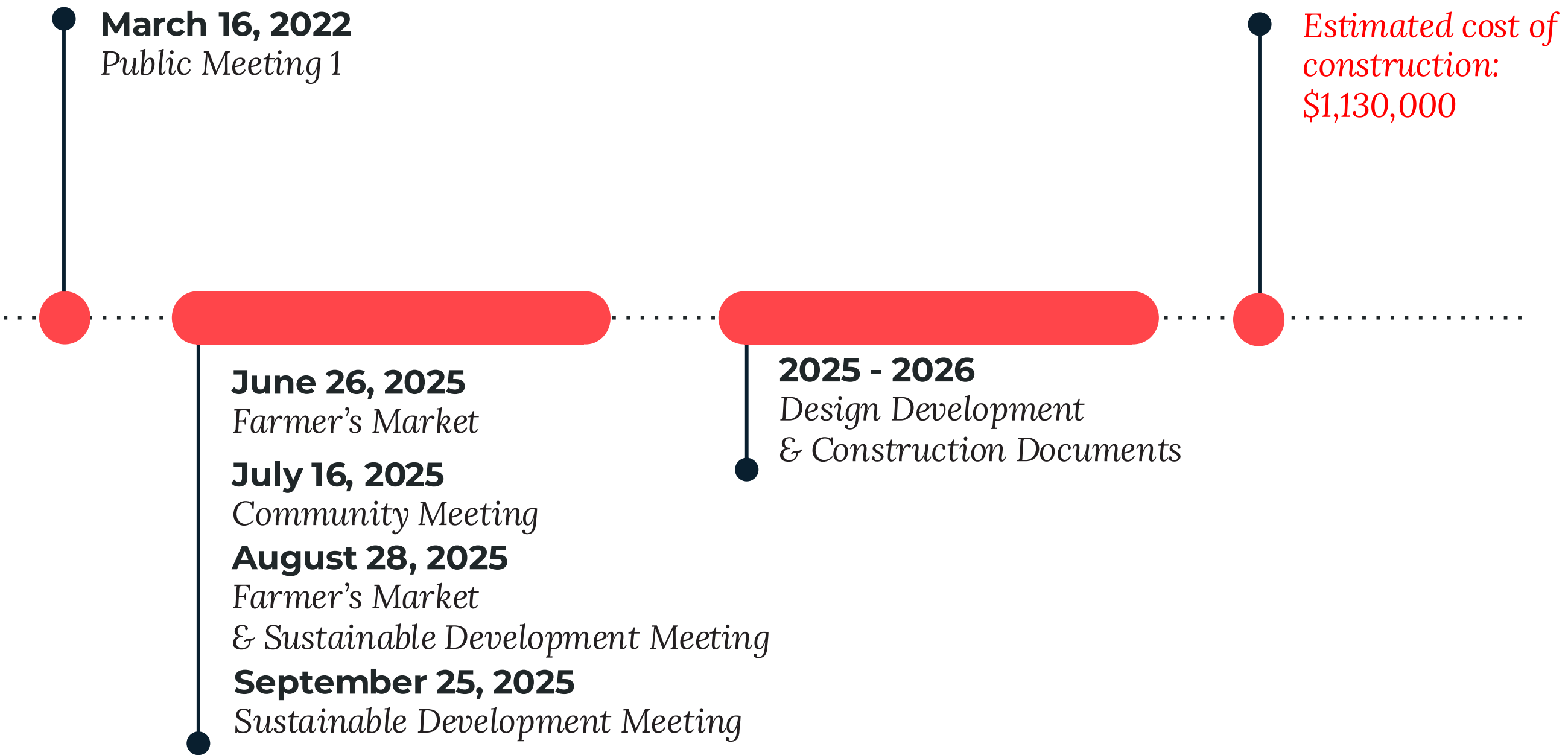
ECHO CHEN

Landscape Designer, Crowley Cottrell

DUDLEY STREET NEIGHBORHOOD INITIATIVE (DSNI)



PROJECT SCHEDULE & FUNDING



CITY OF BOSTON PRIORITIES

- Expanding walkable access to parks
- Addressing equity
- Climate resilience
- Health
- Housing and community building



PARK & RECREATION GOALS

- Accessible and available to all
- Diverse, balanced, and efficient mix of uses
- Meaningful and inclusive community engagement
- Adaptive and resilient landscapes
- Promote connections



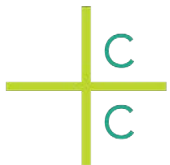
SCHEMATIC DESIGN | MEETING AGENDA

NORTH SITE

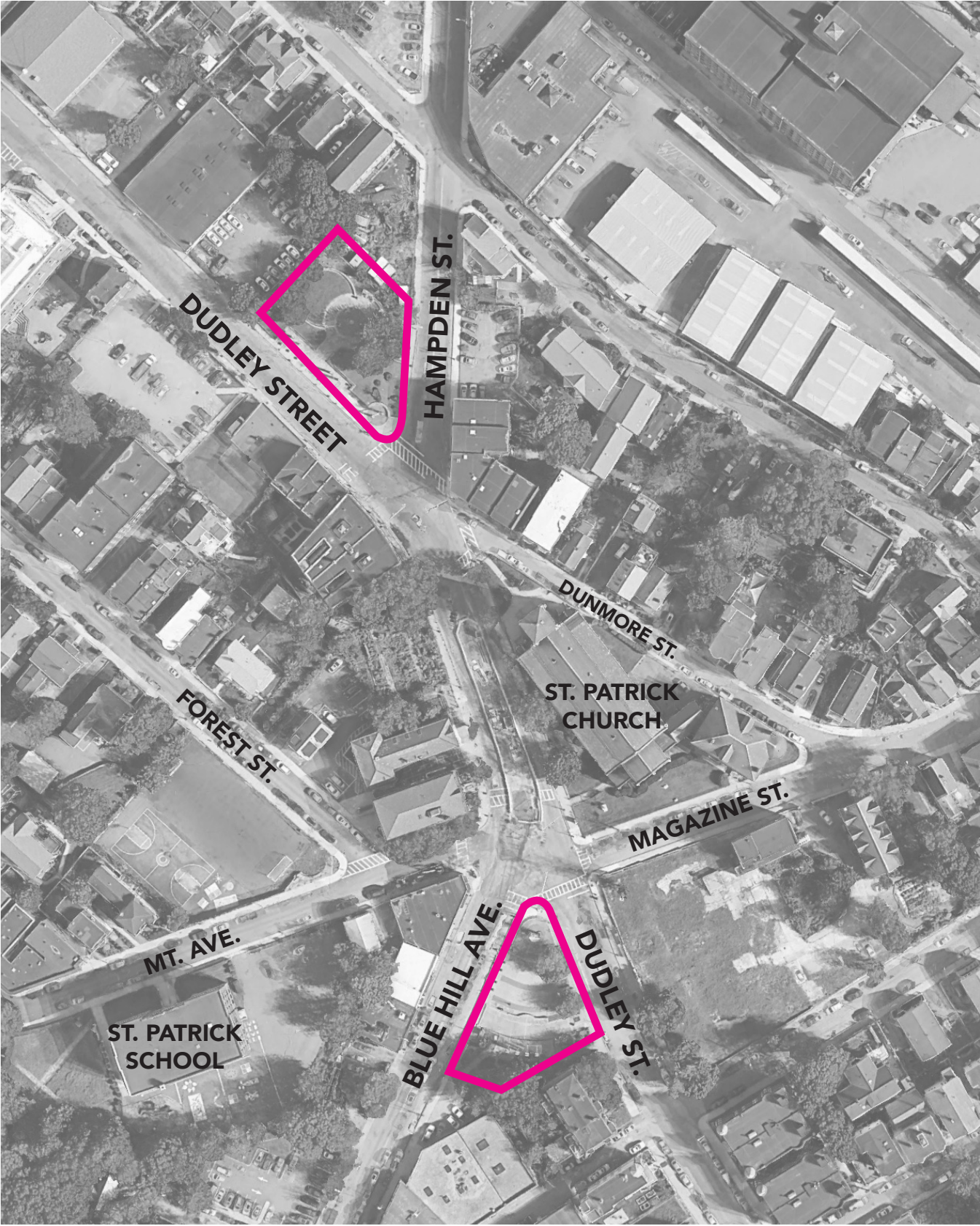
1. Review community input + clarify priorities
2. Share design options
3. Answer questions + listen to feedback

SOUTH SITE

1. Review community input + clarify priorities
2. Share design options
3. Answer questions + listen to feedback



WHAT WE HEARD

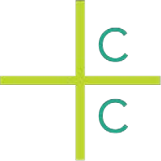


WHO

- 132 Respondents
- 2 Community Events
- 78% Roxbury residents
- 24% from Nearby Communities

USE PATTERNS

- 59% use North Site
- 87% use South Site



WHAT WE HEARD | NORTH SITE

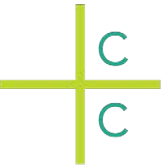


When? Daily or Weekly
Most in Afternoon and Morning
Summer

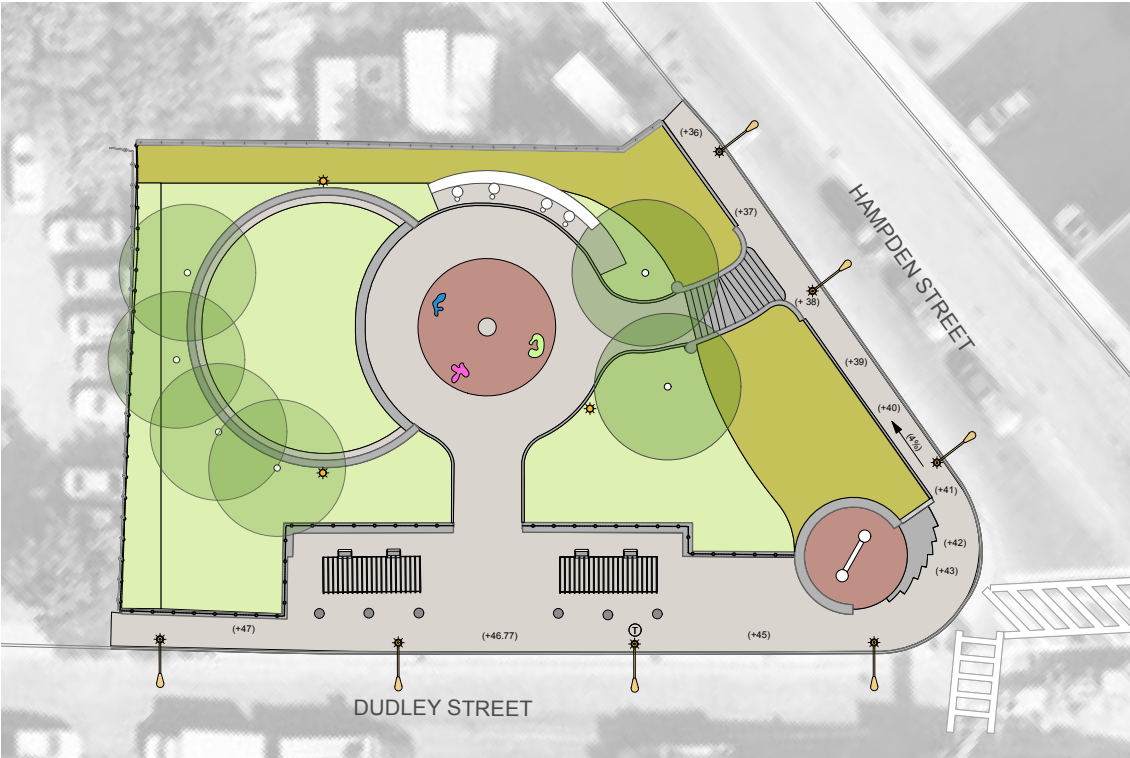
Why not visit? Lack of shade
Lack of seating
Feels unsafe

Priorities to Keep Benches
Trees
Lawn

Want More Community Art
Tables/Chairs
Trees
Lighting



DESIGN OPTIONS | NORTH SITE



EXISTING CONDITIONS



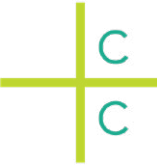
CONCEPT 1 – TARGETED IMPROVEMENTS



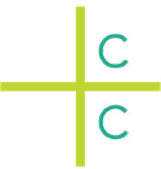
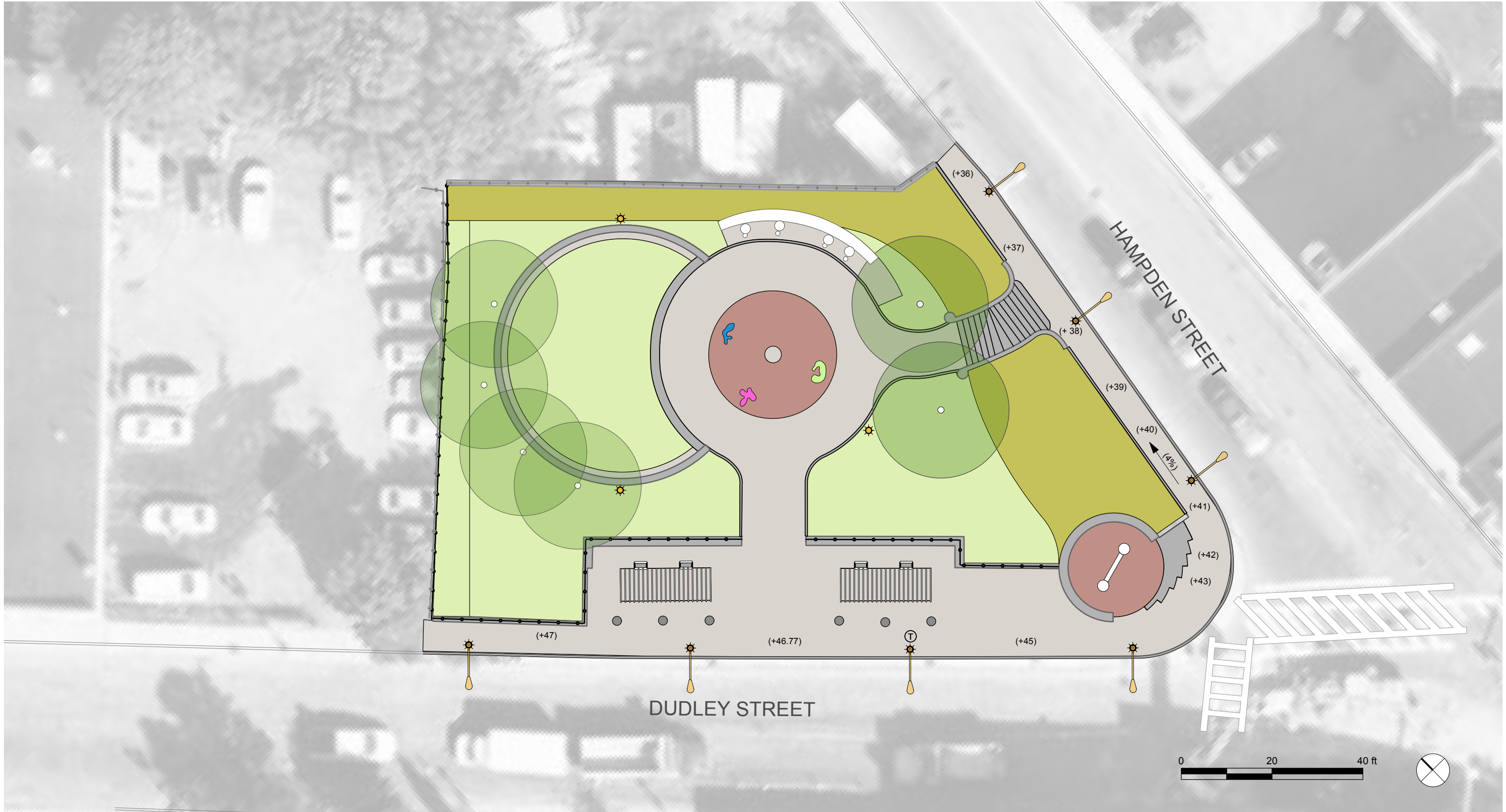
CONCEPT 2 – DOG PARK



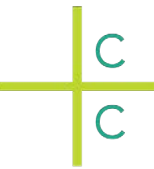
CONCEPT 3 – THE LOOP



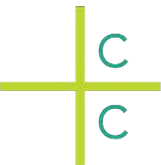
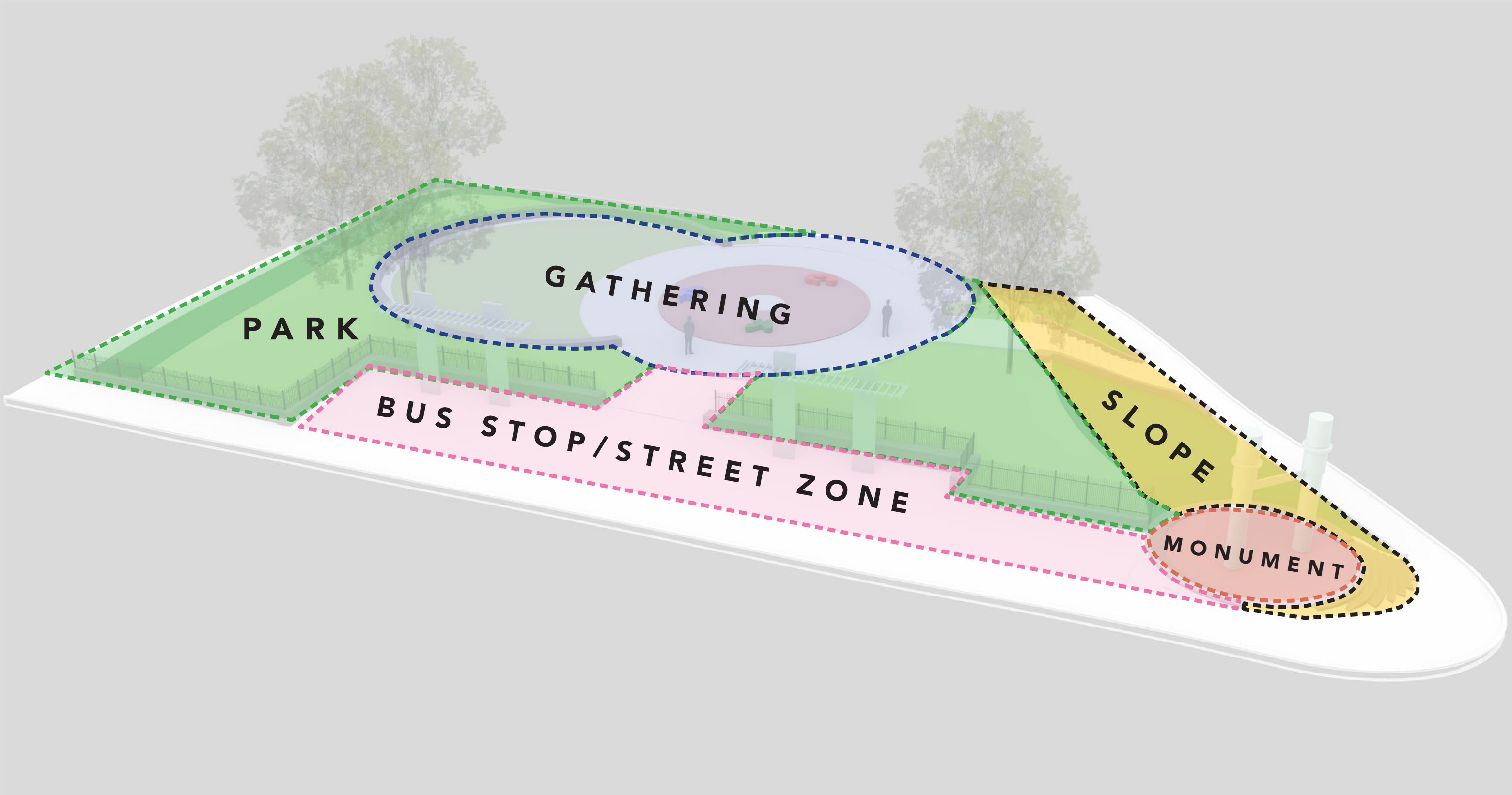
NORTH SITE | EXISTING CONDITIONS



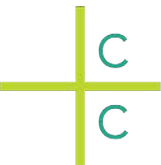
NORTH SITE | EXISTING CONDITIONS



NORTH SITE | EXISTING CONDITIONS — CHARACTER ZONES

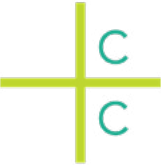


NORTH SITE | EXISTING CONDITIONS — AERIAL PERSPECTIVE

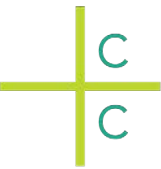
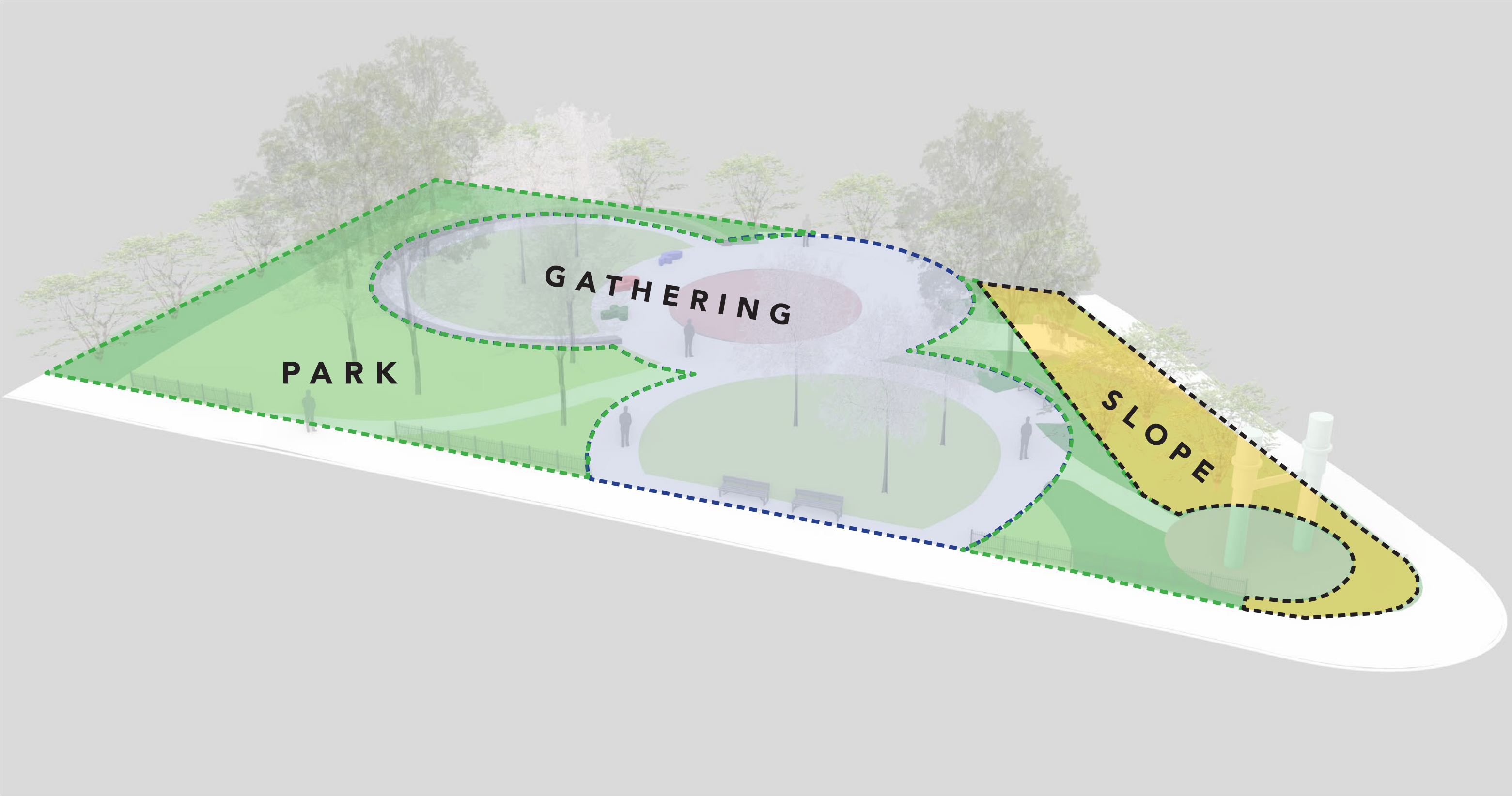


NORTH SITE | TARGETED IMPROVEMENTS

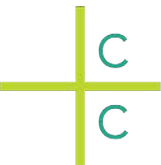
- Repair and improve paving and seatwalls.
- Salvage and reset existing characteristic structures and art.
- Add more shade trees and flowering trees, increase seating and lighting.



NORTH SITE | TARGETED IMPROVEMENTS — CHARACTER ZONES



NORTH SITE | TARGETED IMPROVEMENTS — AERIAL PERSPECTIVE



NORTH SITE | TARGETED IMPROVEMENTS — PRECEDENT IMAGES

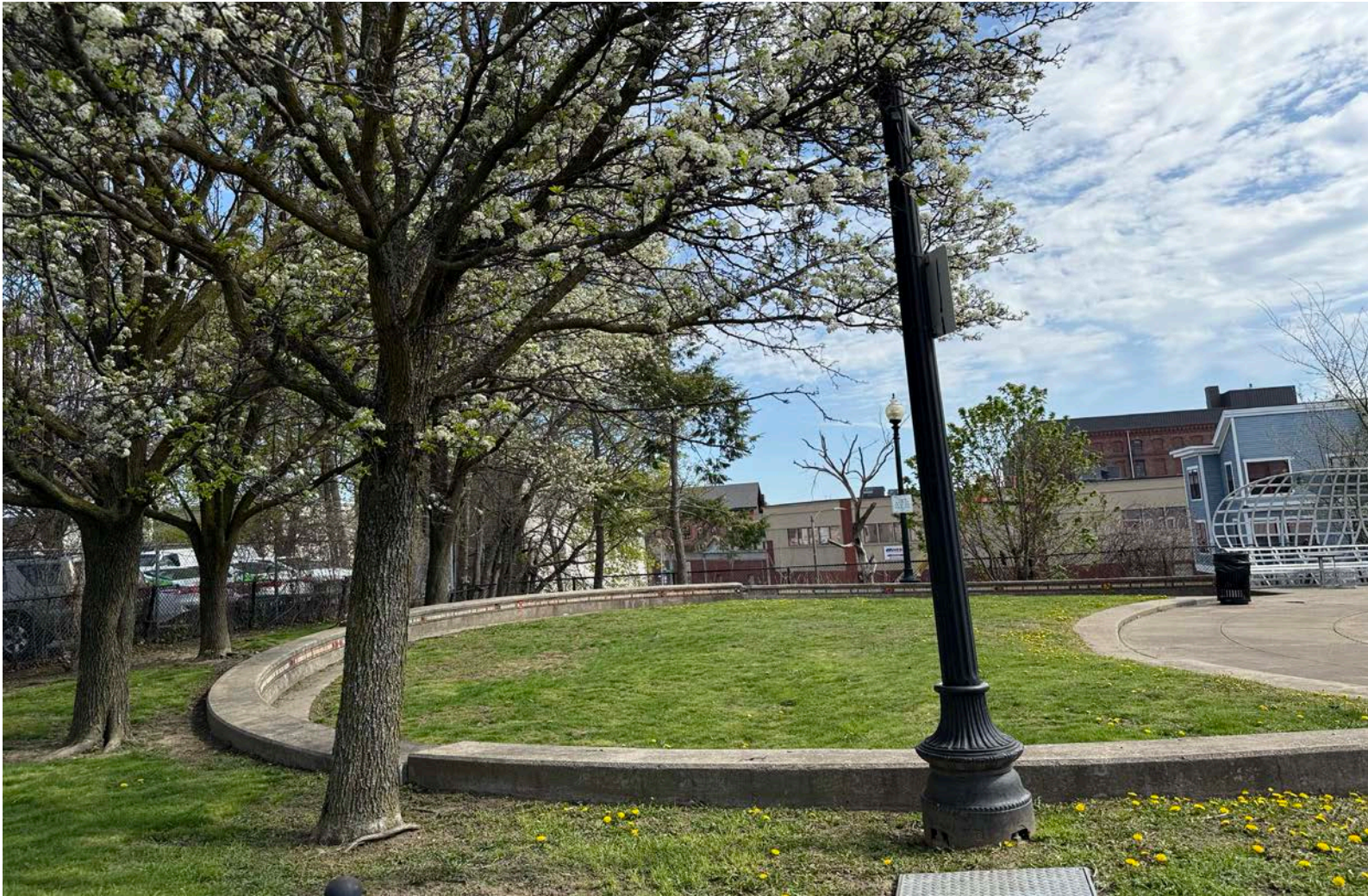
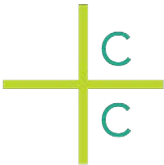
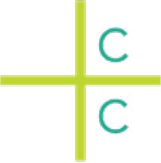


Photo: E. Wonsak

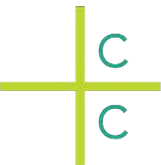
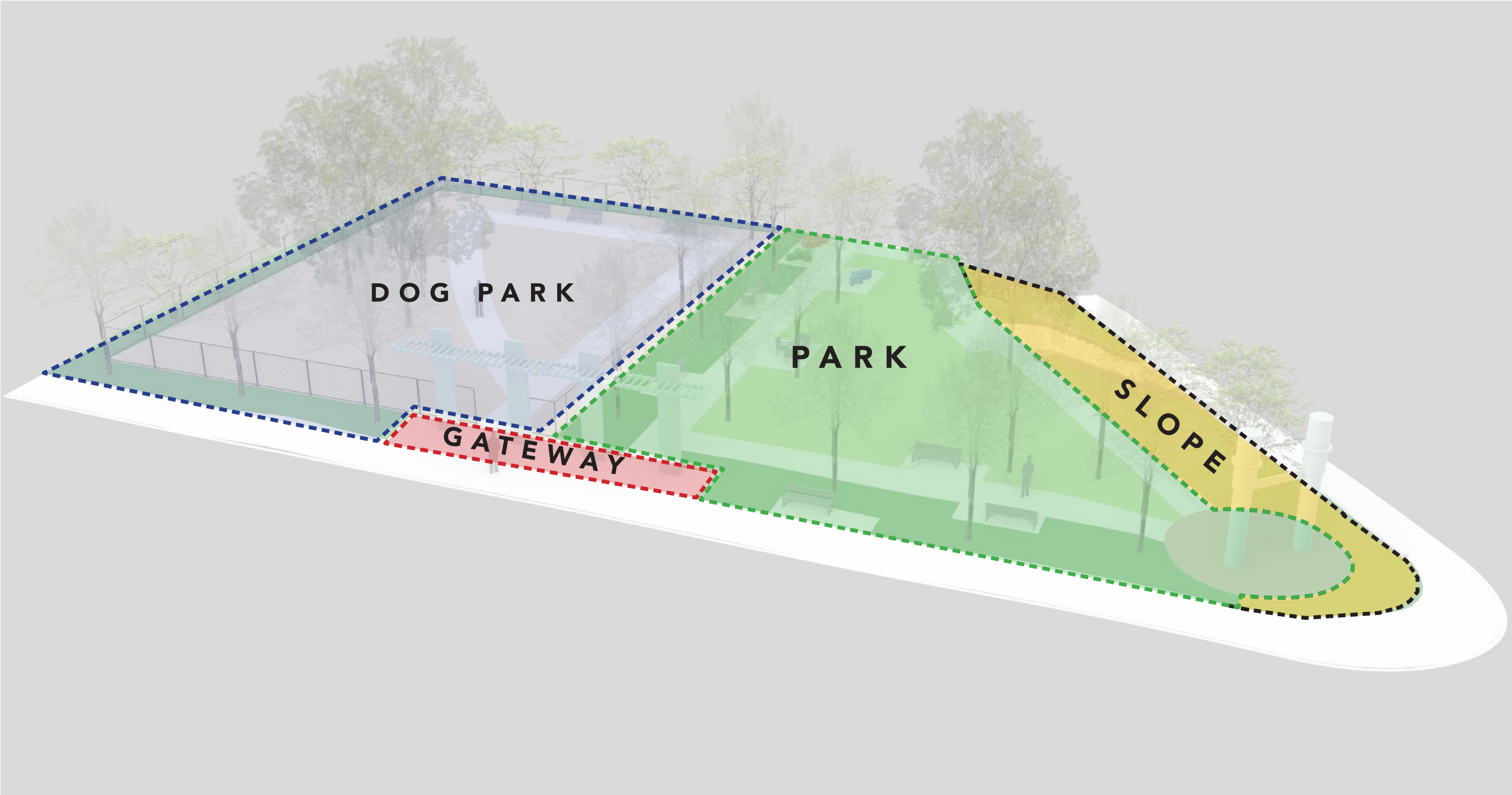


NORTH SITE | DOG PARK

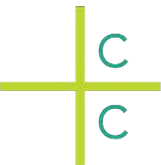
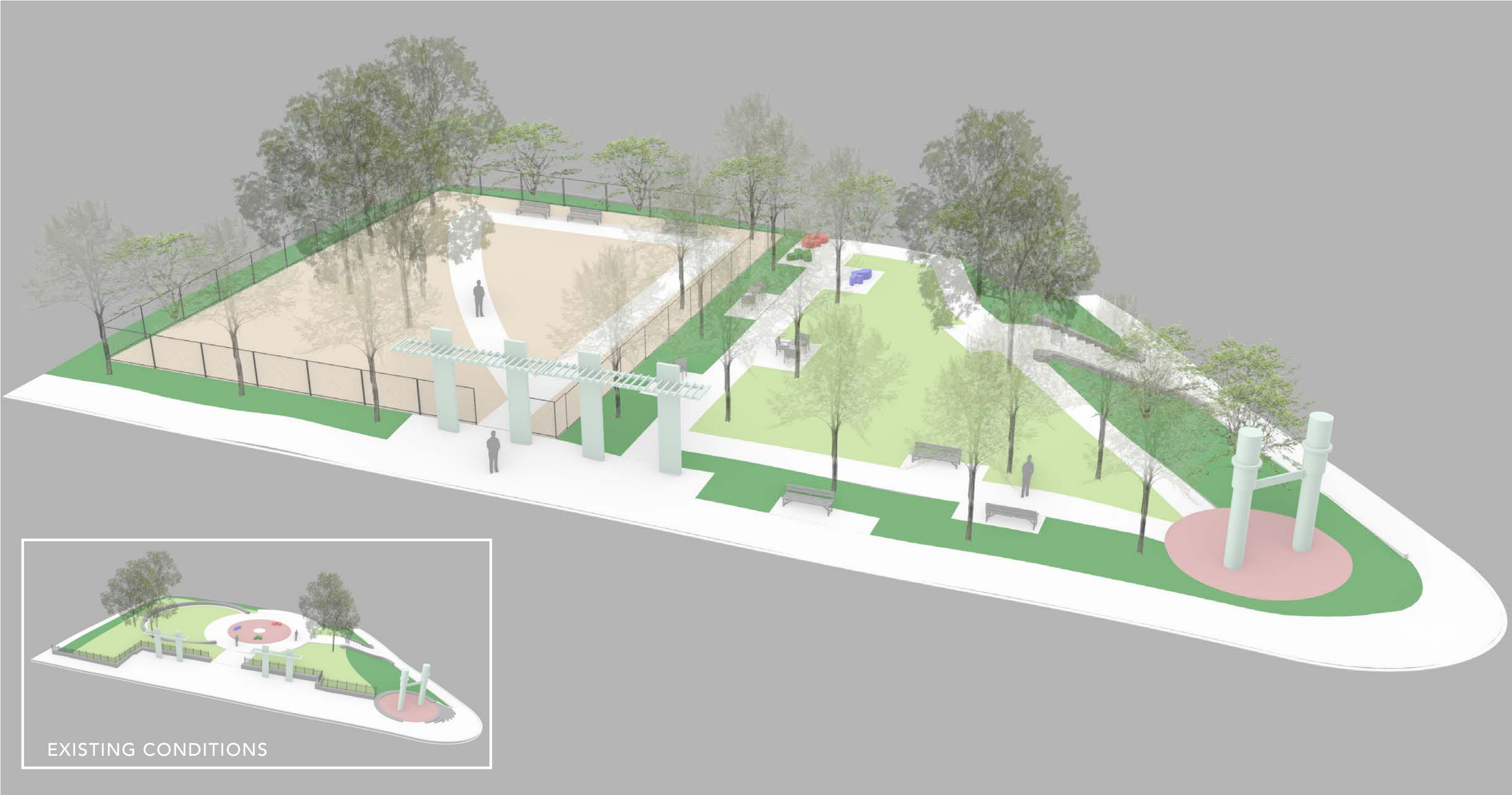
- Remove existing paving
- Add a dog park and loop path.
- Increase shade trees, seating & lighting.



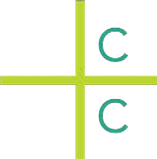
NORTH SITE | DOG PARK — CHARACTER ZONES



NORTH SITE | DOG PARK — AERIAL PERSPECTIVE



NORTH SITE | DOG PARK — PRECEDENT IMAGES



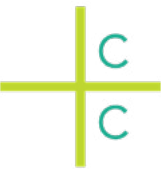
NORTH SITE | THE LOOP

Remove existing paving and structures.

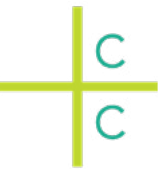
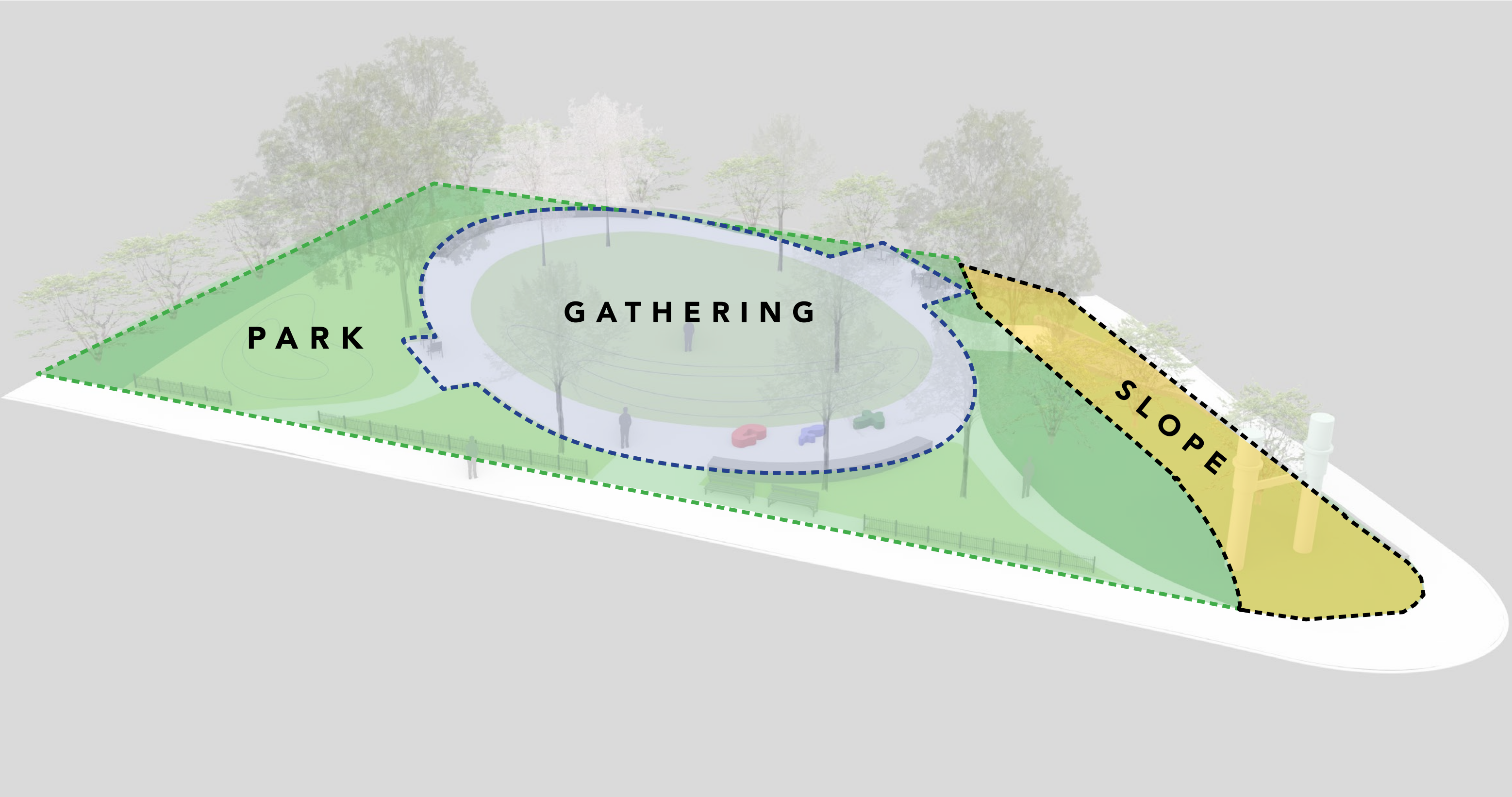
Add a loop path

Add mist poles as a water play element.

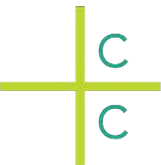
Increase shade trees, seating and lighting.



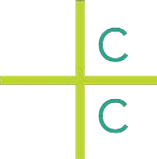
NORTH SITE | THE LOOP — CHARACTER ZONES



NORTH SITE | THE LOOP — AERIAL PERSPECTIVE



NORTH SITE | THE LOOP — PRECEDENT IMAGES



DESIGN OPTIONS | NORTH SITE



EXISTING CONDITION



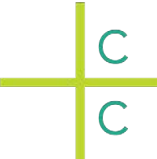
CONCEPT 1 – TARGETED IMPROVEMENTS



CONCEPT 2 – DOG PARK



CONCEPT 3 – THE LOOP



WHAT WE HEARD | SOUTH SITE

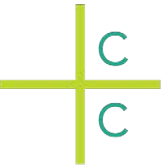


When?
Daily or Weekly
Most in Afternoon
Summer

Why not visit?
Lack of shade
Noise and traffic
Lack of seating

Priorities to Keep
Benches
Trees
Lawn

Want More
Community Art
Tables/Chairs
Trees
Lighting



DESIGN OPTIONS | SOUTH SITE



EXISTING CONDITIONS



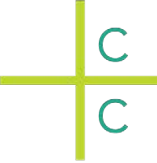
CONCEPT 1 – TARGETED IMPROVEMENTS



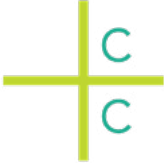
CONCEPT 2 – PLAZA + PARK



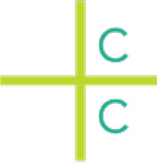
CONCEPT 3 – THE GROVE



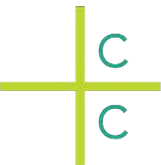
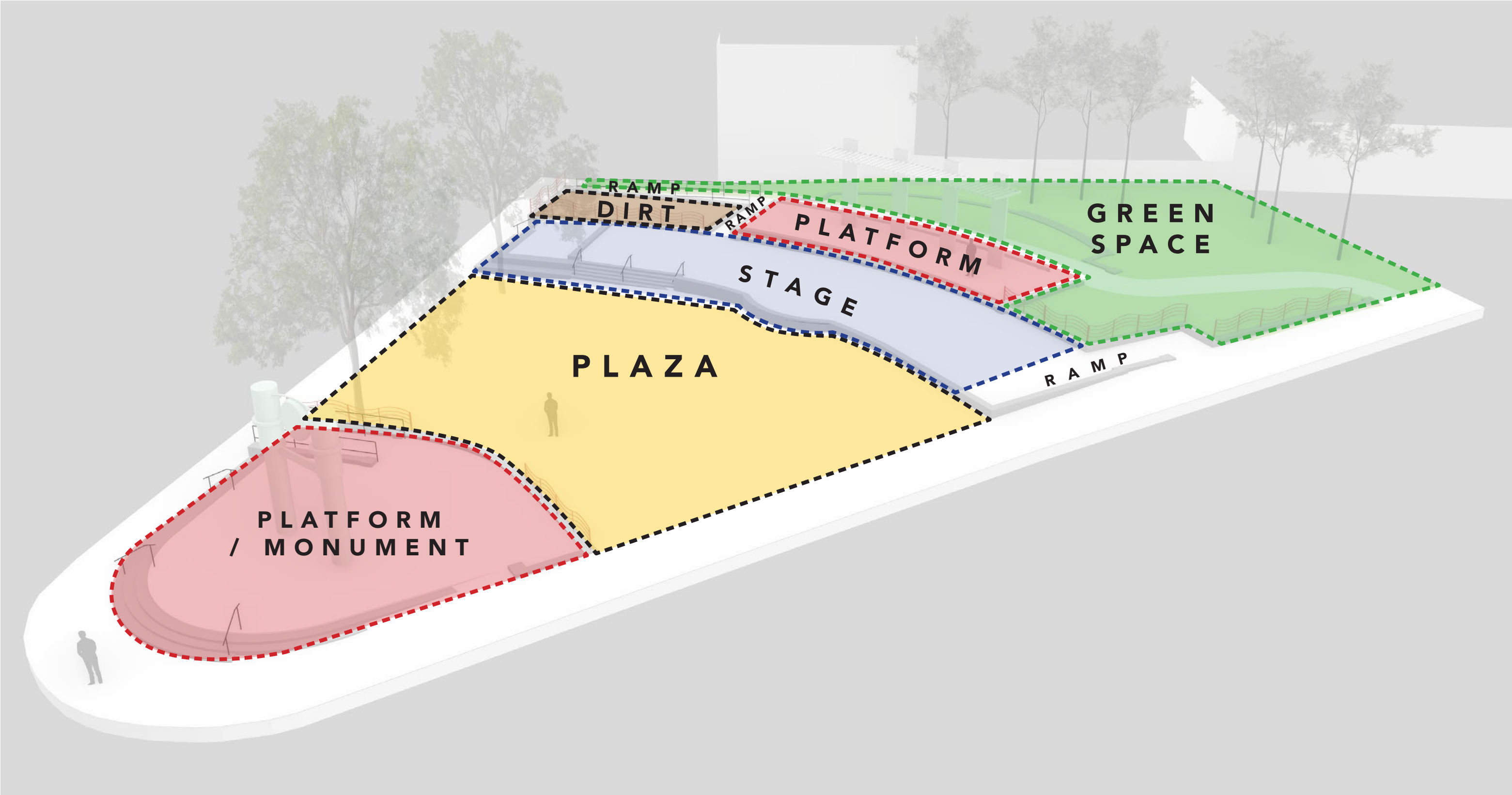
SOUTH SITE | EXISTING CONDITIONS



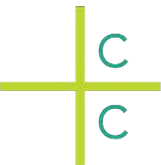
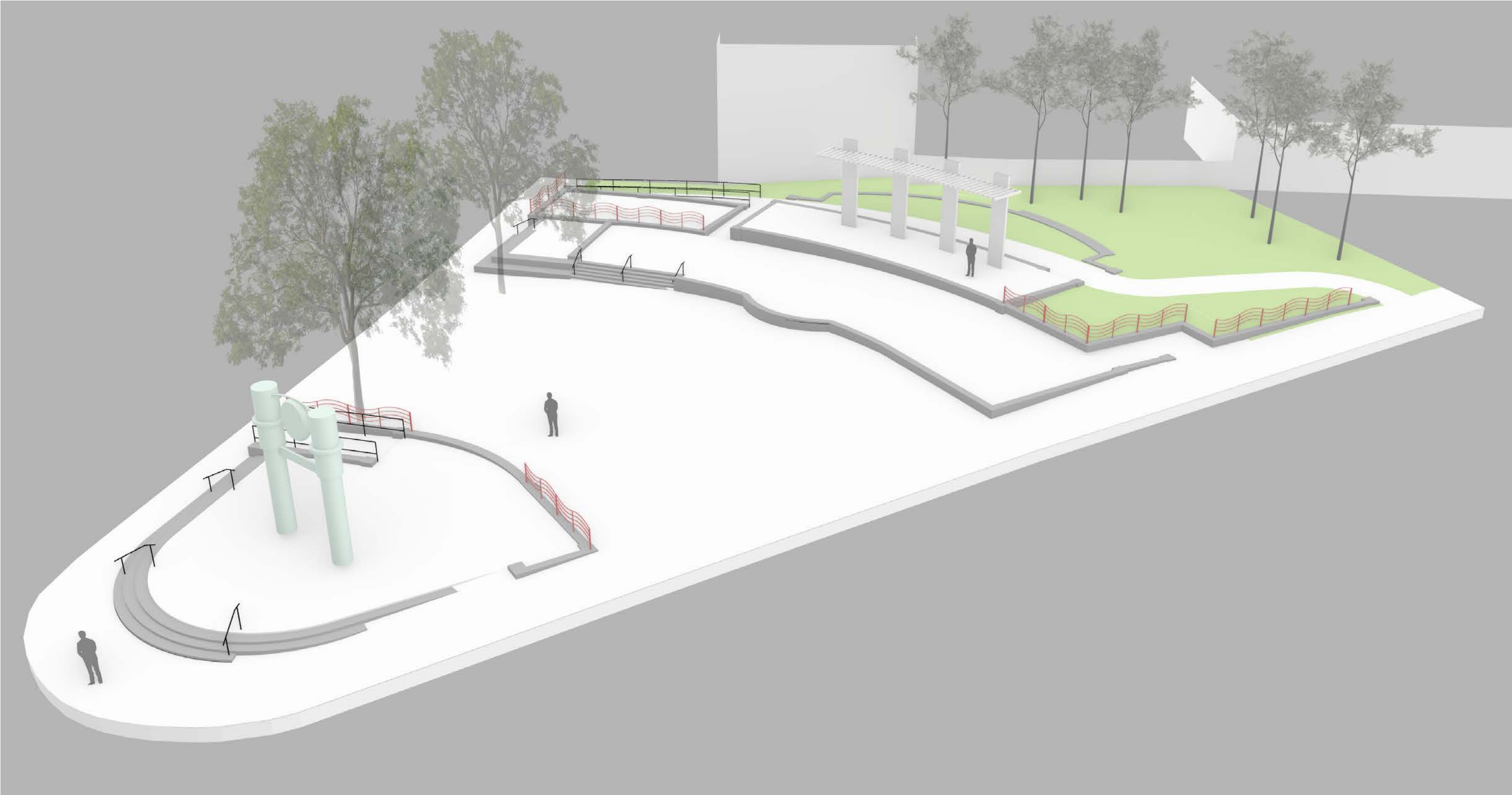
SOUTH SITE | EXISTING CONDITIONS



SOUTH SITE | EXISTING CONDITIONS — CHARACTER ZONES



SOUTH SITE | EXISTING CONDITIONS — AERIAL PERSPECTIVE



SOUTH SITE | TARGETED IMPROVEMENTS

Simplify park + improve accessibility by removing elevated paving at clock sculpture.

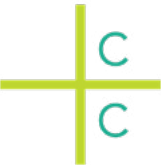
Add more shade trees and flowering trees.

Increase seating and lighting.

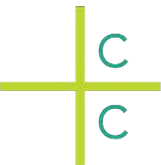
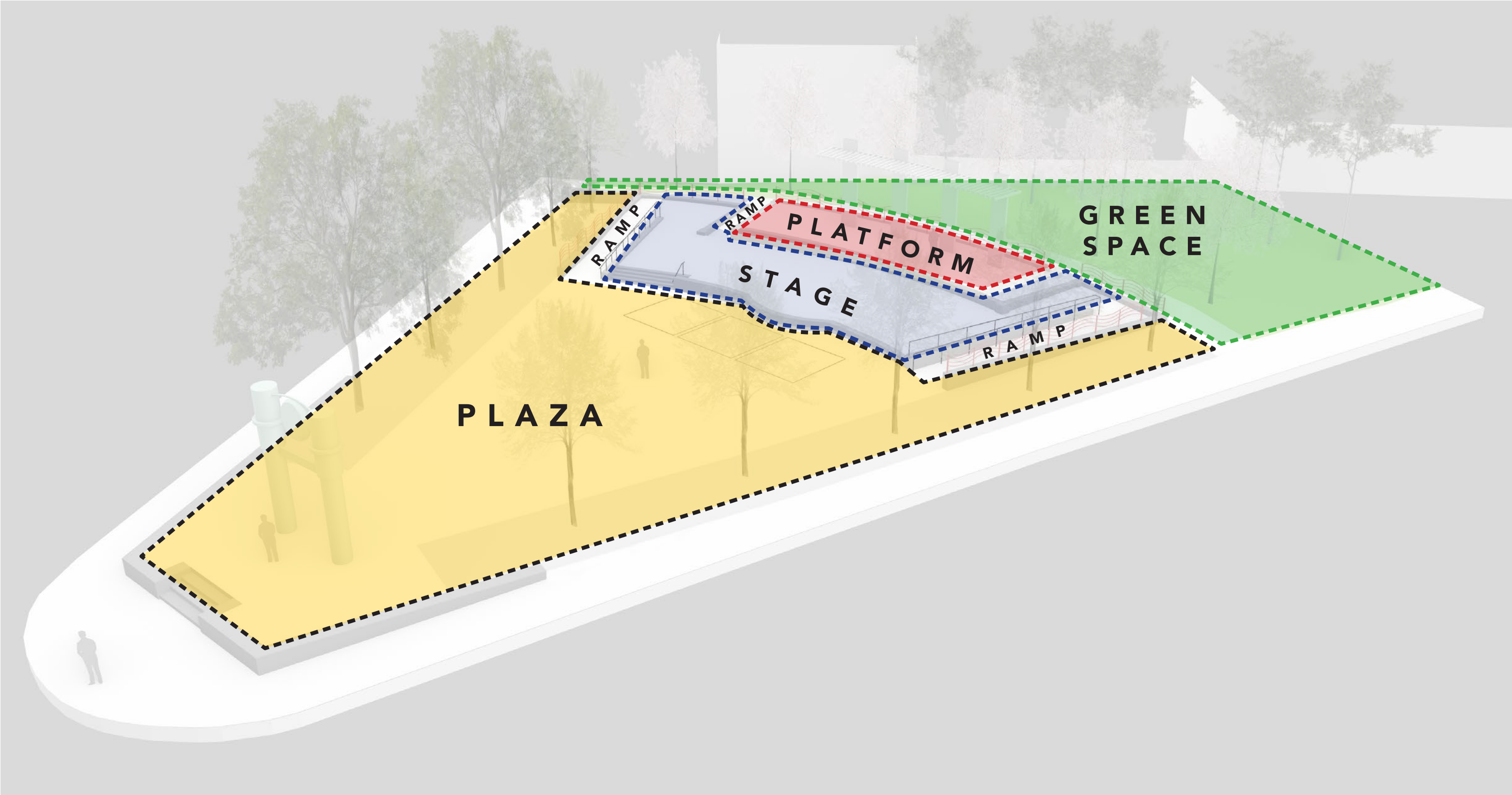
DUDLEY STREET

BLUE HILL AVENUE

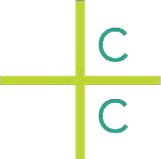
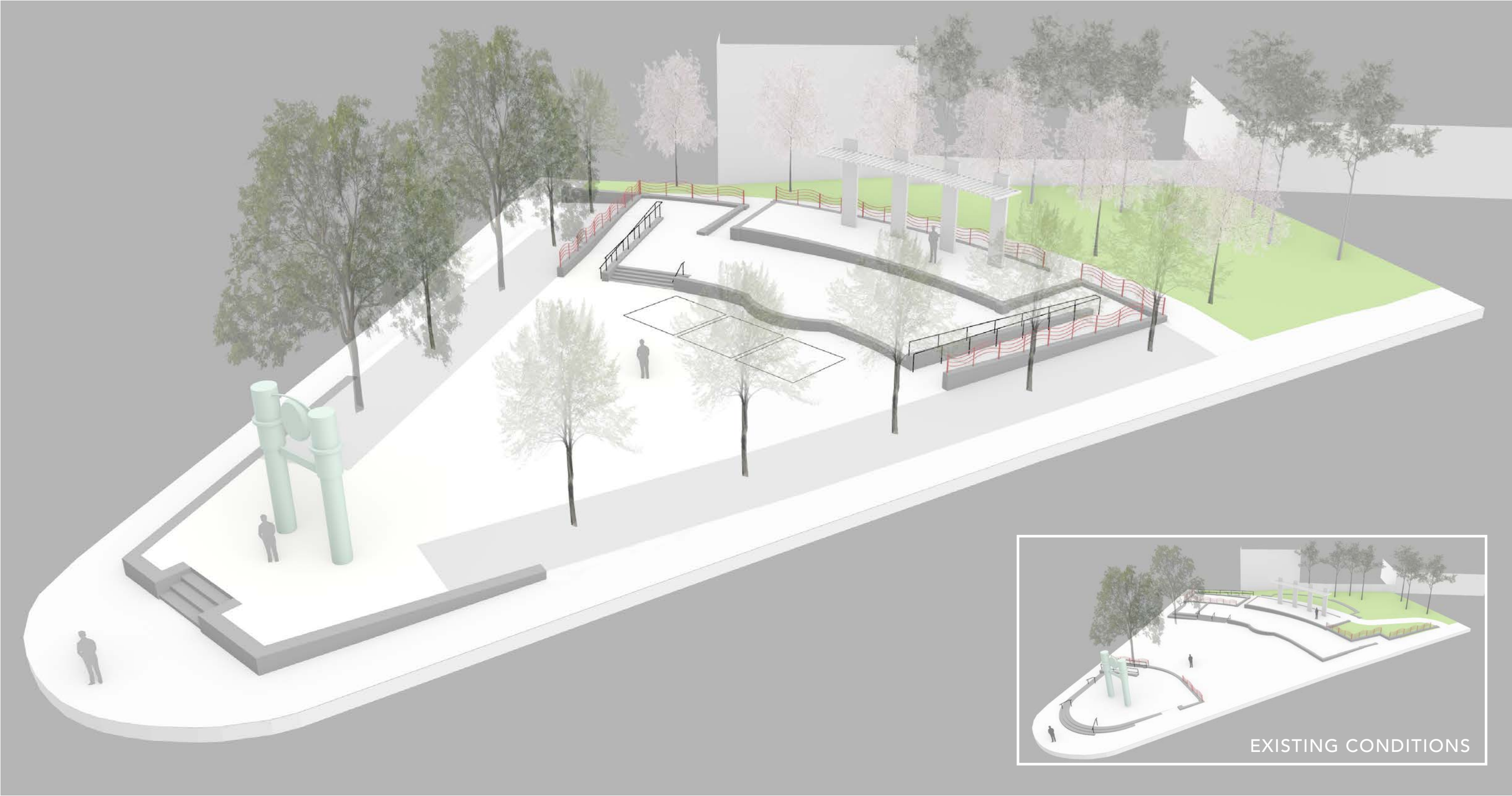
0 20 40 ft



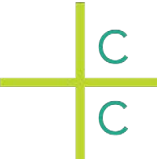
SOUTH SITE | TARGETED IMPROVEMENTS — CHARACTER ZONES



SOUTH SITE | TARGETED IMPROVEMENTS — AERIAL PERSPECTIVE

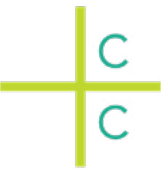


SOUTH SITE | TARGETED IMPROVEMENTS — PRECEDENT IMAGES

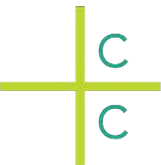
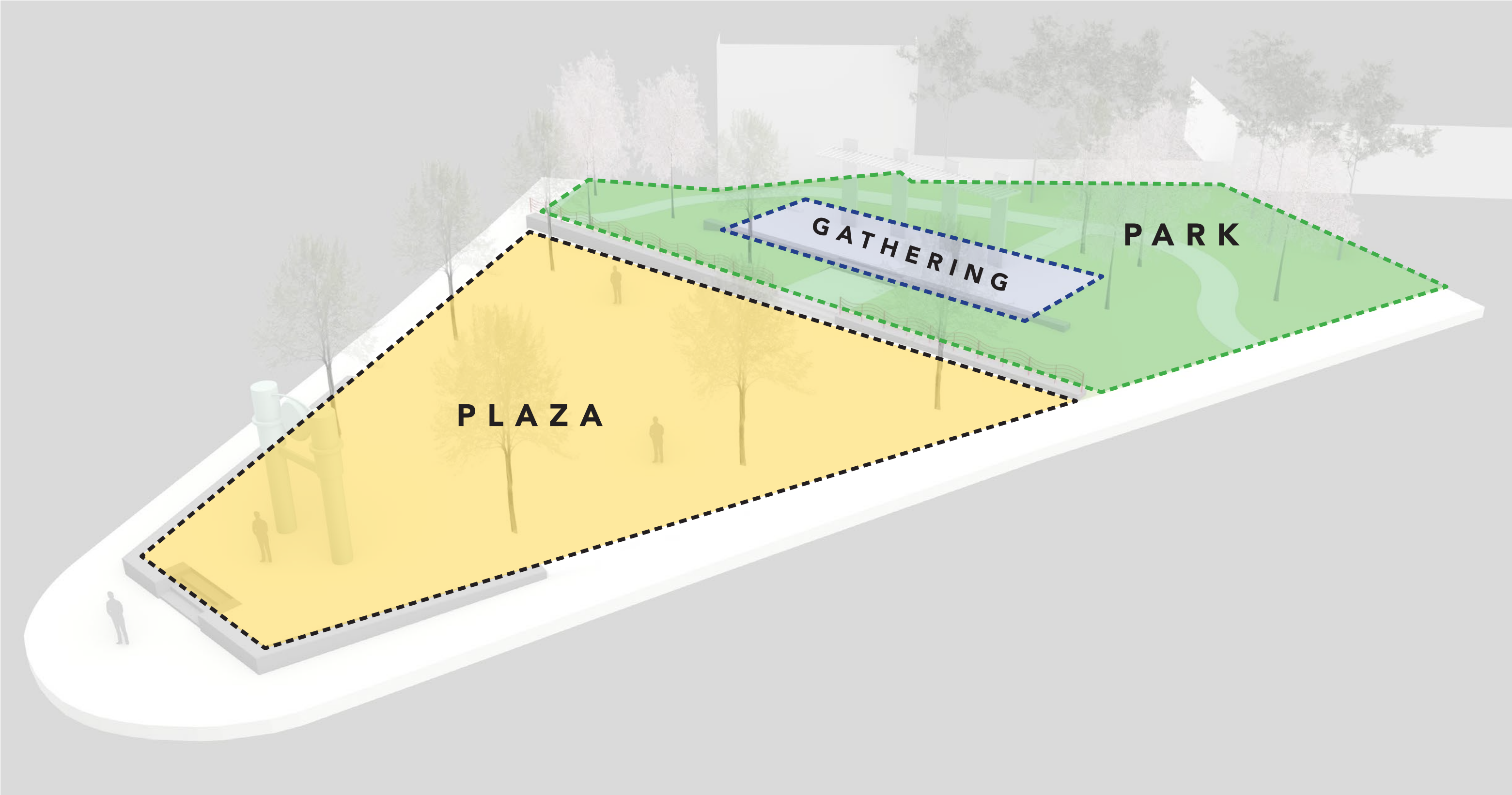


SOUTH SITE | PLAZA + PARK

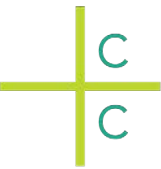
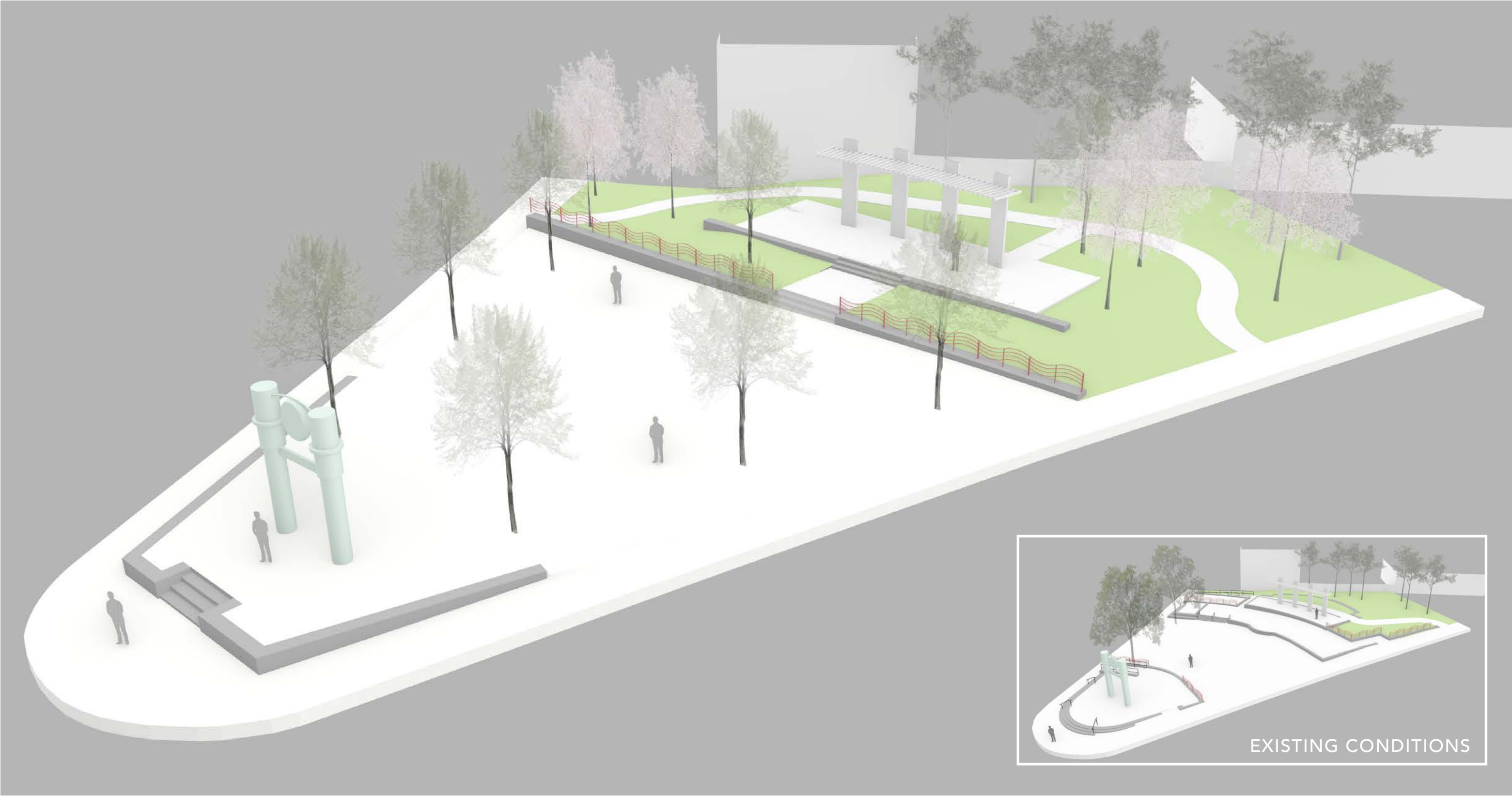
- Rebuild the stage walls to connect to the sidewalk.
- Clear and expand the lawn for recreational use.
- Add more trees, seating & lighting.



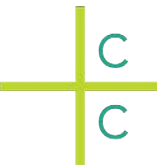
SOUTH SITE | PLAZA + PARK — AERIAL PERSPECTIVE



SOUTH SITE | PLAZA + PARK — AERIAL PERSPECTIVE

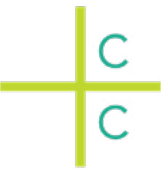


SOUTH SITE | PLAZA + PARK — PRECEDENT IMAGES

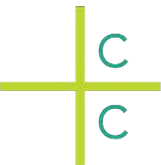
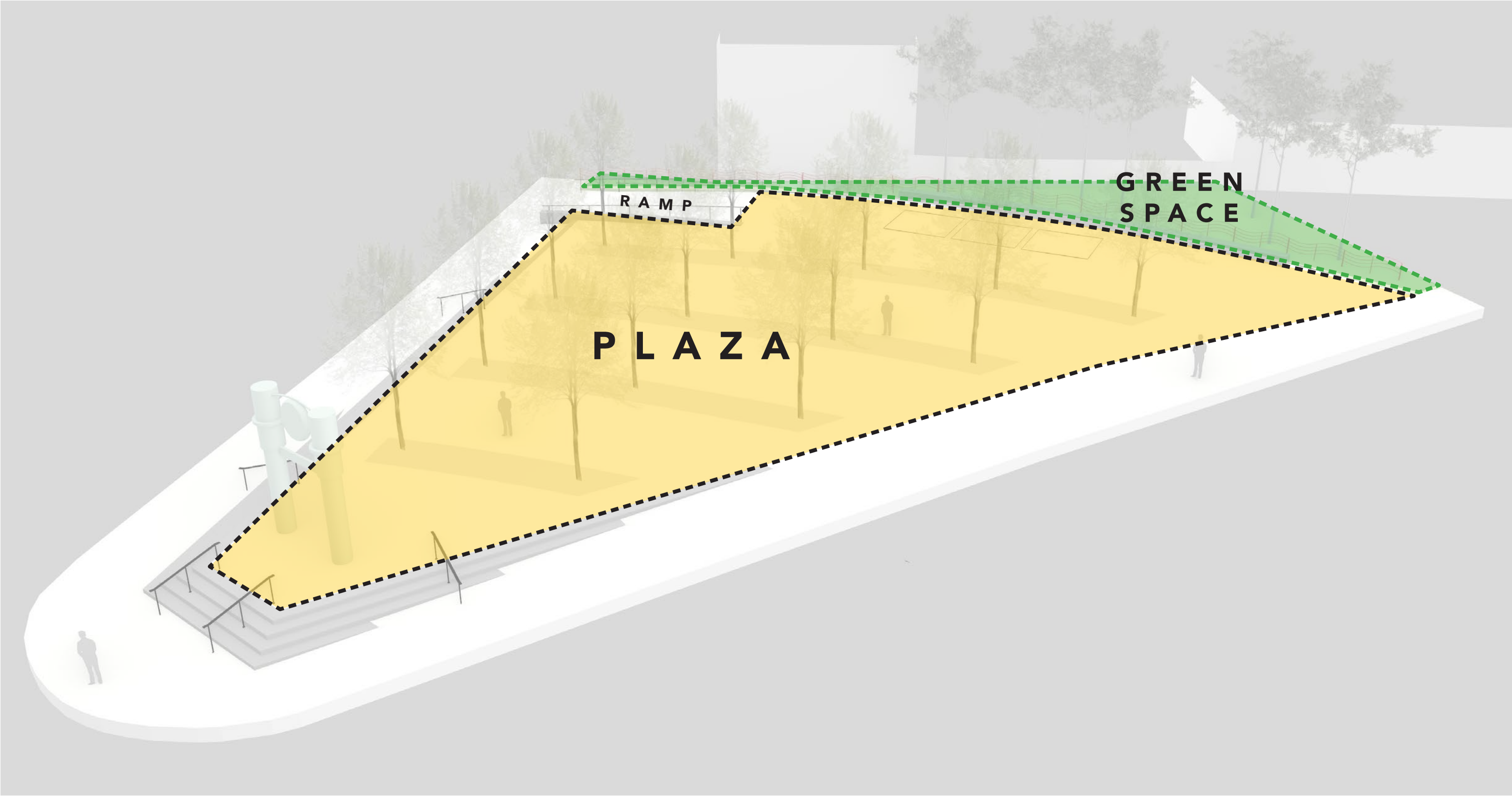


SOUTH SITE | THE GROVE

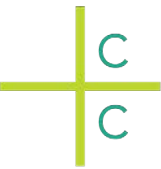
- Level the plaza to a single elevation, + connect to the sidewalk with steps + ramps.
- Add more shade trees to form a grove plaza for flexible use.
- Increase park seating & lighting



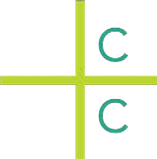
SOUTH SITE | THE GROVE — CHARACTER ZONES



SOUTH SITE | THE GROVE — AERIAL PERSPECTIVE



SOUTH SITE | THE GROVE — PRECEDENT IMAGES



DESIGN OPTIONS | SOUTH SITE



EXISTING CONDITION



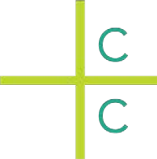
CONCEPT 1 – TARGETED IMPROVEMENTS



CONCEPT 2 – PLAZA + PARK



CONCEPT 3 – THE GROVE



THANK YOU!



**Next Meeting
September 25, 2025**

boston.gov/dudley-common

For questions, maintenance requests or
concerns regarding any of our
parks contact 311



August 28, 2025
Boston Parks and Recreation





DUDLEY TOWN COMMON

SCHEMATIC DESIGN CONCEPTS

AUGUST 28, 2025



City of Boston
Parks and Recreation
Mayor Michelle Wu