

Improvements to **DUDLEY TOWN COMMON**



MEETING RECORDING



The Boston Parks and Recreation Department will be recording the meeting and posting to our project webpage for those who are unable to attend the Zoom meeting live.

It is possible that participants may also be recording the meeting with their phones cameras or other devices. If you do not wish to be recorded during this meeting, please keep your microphone muted and camera off.

*Please share with your neighbors and friends,
boston.gov/dudley-common.*

VIRTUAL MEETING ETIQUETTE

We want to ensure this conversation is a pleasant experience for all and that all community members/stakeholders are comfortable sharing their comments, questions and feedback.

Please be respectful and mindful of each other's time when asking questions/ providing comments, so that all attendees are able to participate in the meeting.

Keep questions/ comments project-specific and not personal to yield solution-driven discussion.

Please wait until all attendees have had the opportunity to ask a question/ provide a comment before providing additional questions/ comments.

*You can always set up a conversation with **Priyanka Vankina**, priyanka.vankina@boston.gov , to further discuss the project or process.*

ZOOM TIPS

Here is how you can participate during the question and answer part of the presentation.

DURING THE PRESENTATION:



VIA WEB:

Turn video on / off.



To use these non-verbal options click on participants (bottom of screen); these options will pop up in side bar.

DURING THE Q&A:



JOINING VIA PHONE?

Use *9 to raise hand to ask for audio / video permission to ask questions or provide comments.



VIA WEB:

Chat to ask questions / comments or provide responses to poll questions



Raise hand to ask for audio / video permission to ask questions or provide comments.

PROJECT OVERVIEW



AGENDA

1

PROJECT TEAM INTRODUCTION

2

PROJECT OVERVIEW

3

PRESENTATION

4

LISTENING & DISCUSSION

5

CLOSING REMARKS & NEXT STEPS

PROJECT TEAM

PRIYANKA VANKINA

Project Manager

priyanka.vankina@boston.gov or 617-961-3028

MY'KEL MCMILLAN

Community Outreach Coordinator

corey.mcmillen@boston.gov or 617-201-1294

ASHA JANAY

Office of Neighborhood Services

asha.janay@boston.gov

NAOMI COTTRELL

Principal, Crowley Cottrell

LEAH BRODER

Senior Associate, Crowley Cottrell

ECHO CHEN

Landscape Designer, Crowley Cottrell

RENE MARDONES

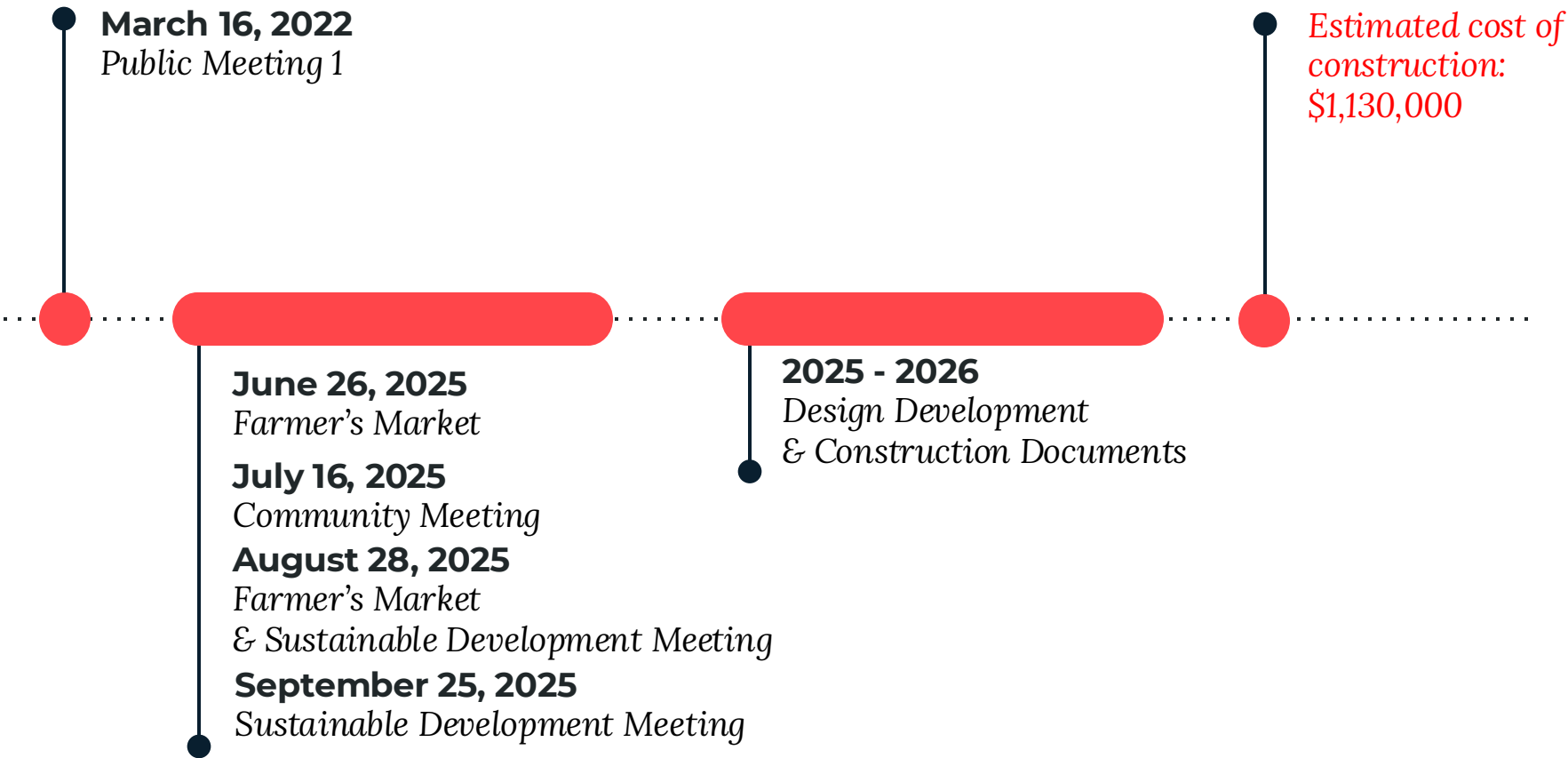
Director of Community Organizing, Dudley Street Neighborhood Initiative

LUZ COLON

Community Liaison, Dudley Street Neighborhood Initiative



PROJECT SCHEDULE & FUNDING





CITY OF BOSTON PRIORITIES

- Expanding walkable access to parks
- Addressing equity
- Climate resilience
- Health
- Housing and community building



PARK & RECREATION GOALS

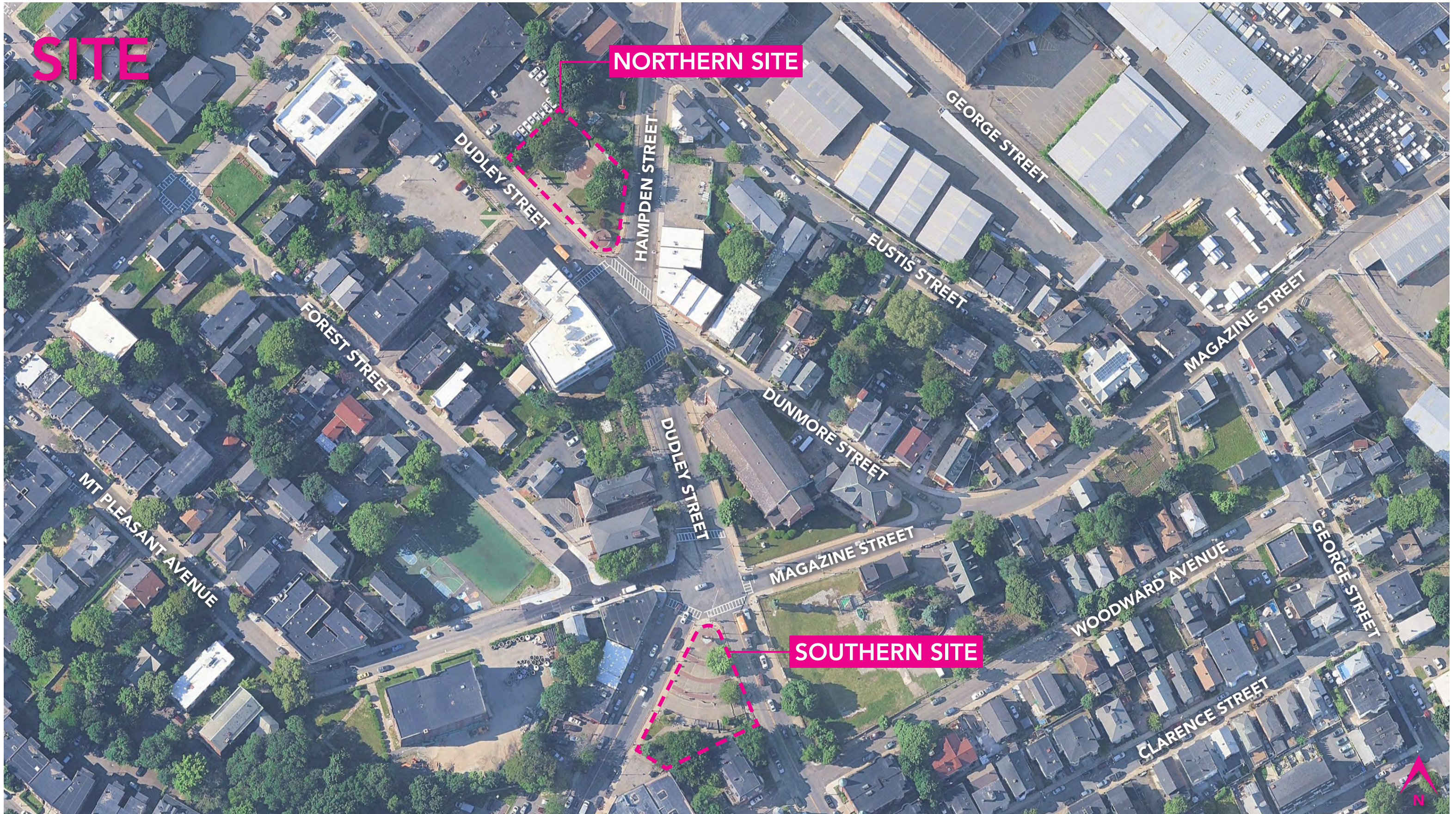
- Accessible and available to all
- Diverse, balanced, and efficient mix of uses
- Meaningful and inclusive community engagement
- Adaptive and resilient landscapes
- Promote connections



SITE

NORTHERN SITE

SOUTHERN SITE

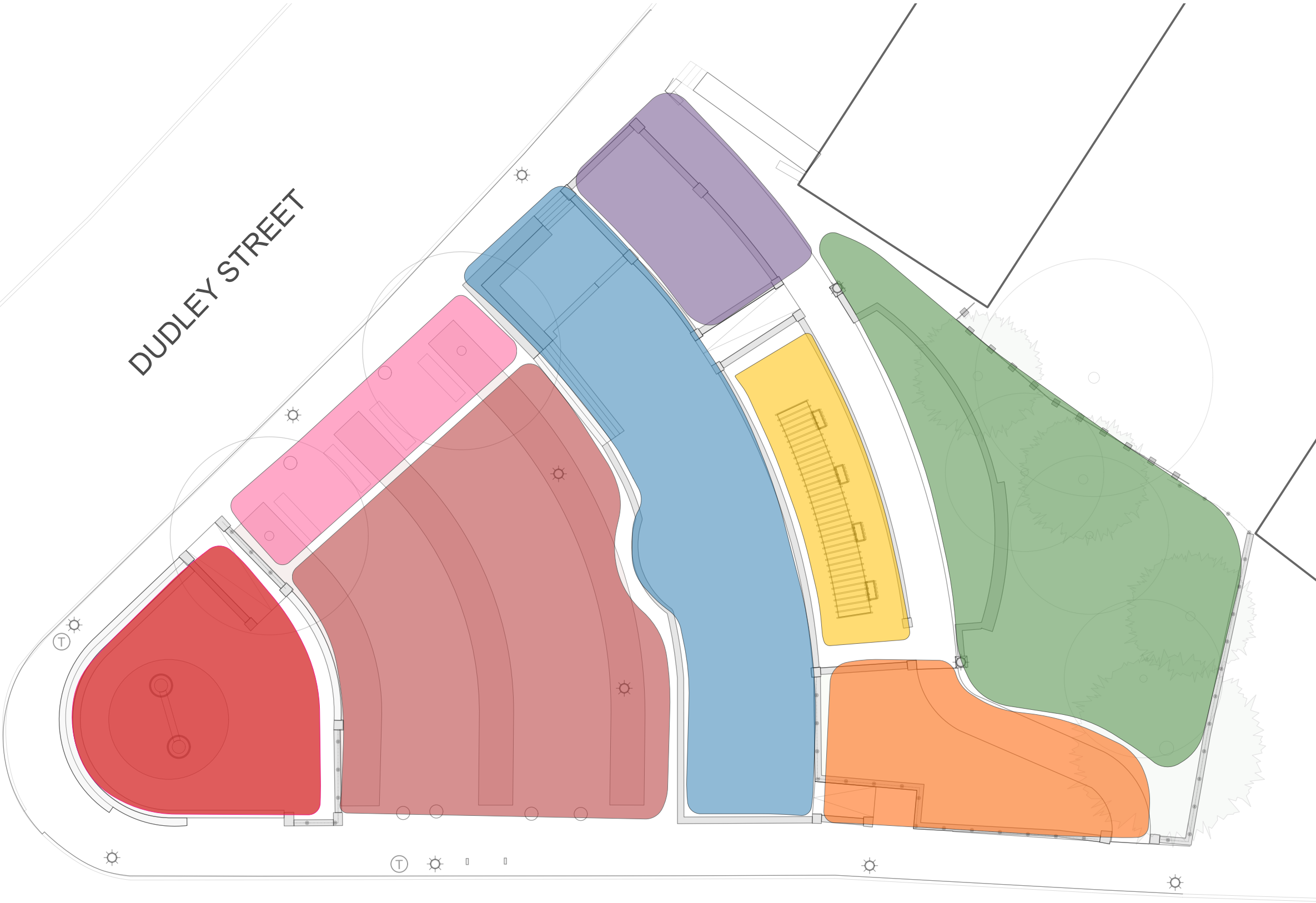


Southern Site



Southern Site – Character

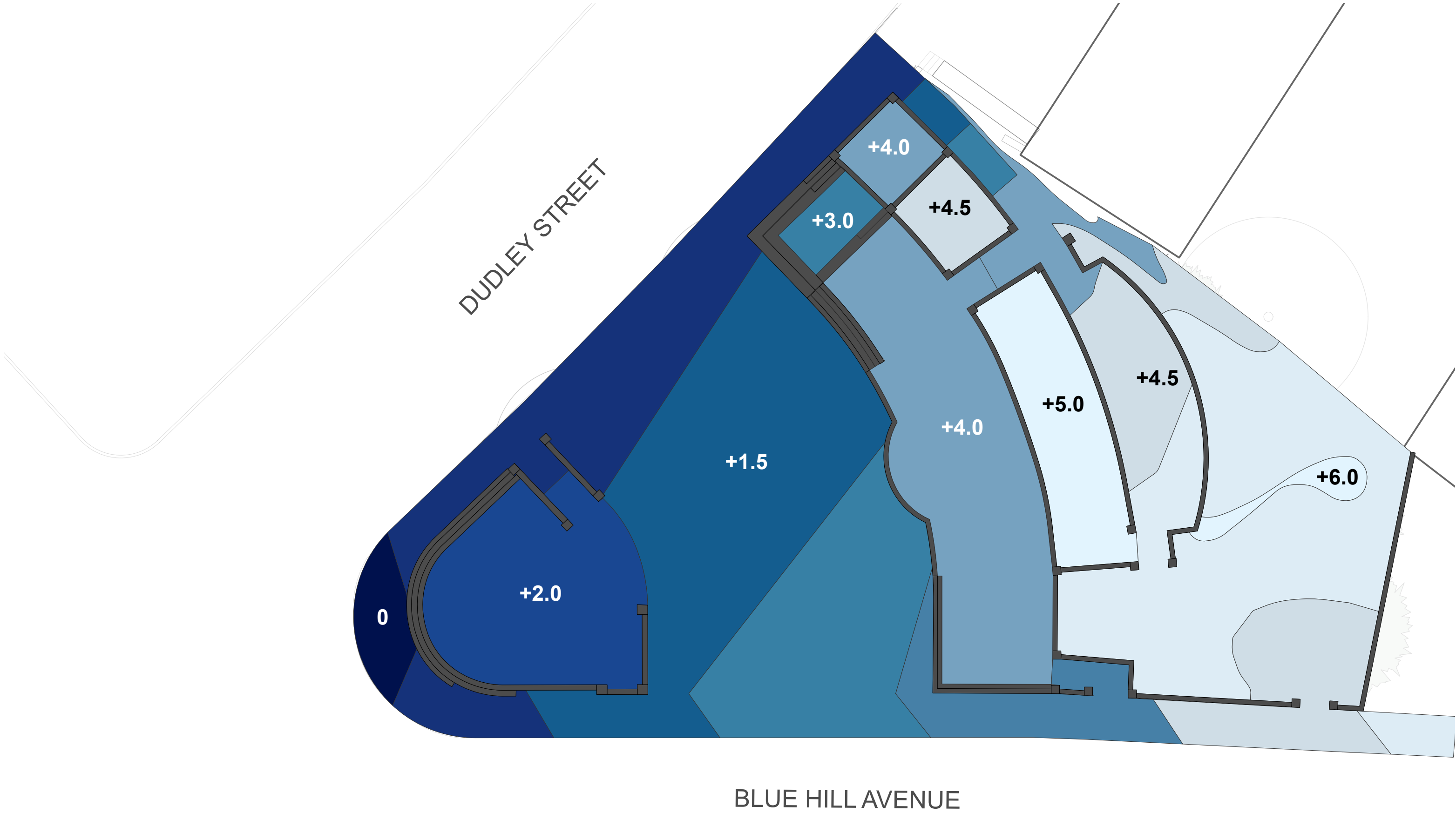
- MONUMENT / CLOCK TOWER
- SIDE ENTRY
- PLAZA
- STREET-SIDE SEATING AREA
- STAGE PLATFORM
- BACKDROP PLATFORM
- CONCRETE PLANTERS
- TREE GROVE

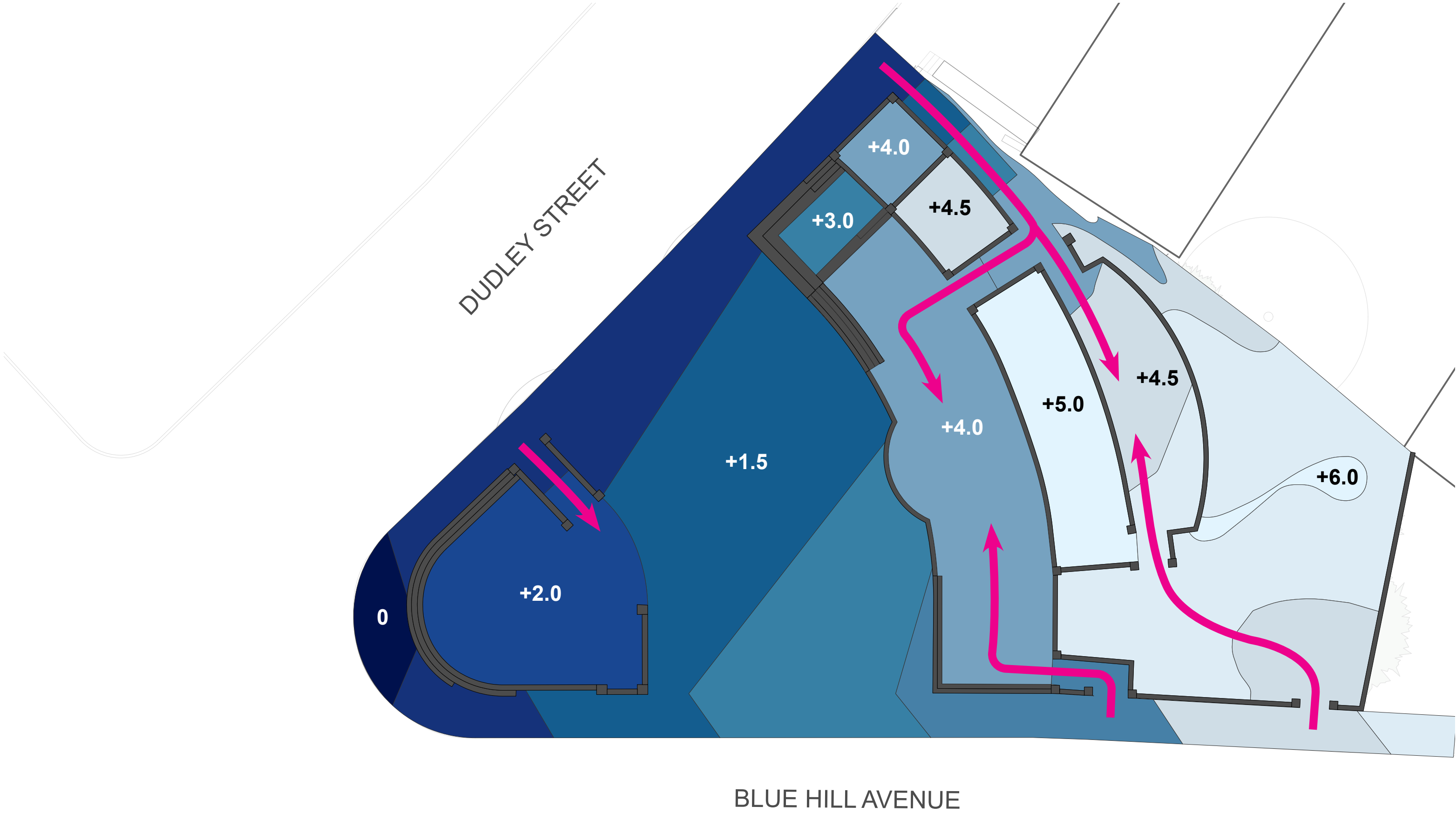


BLUE HILL AVENUE

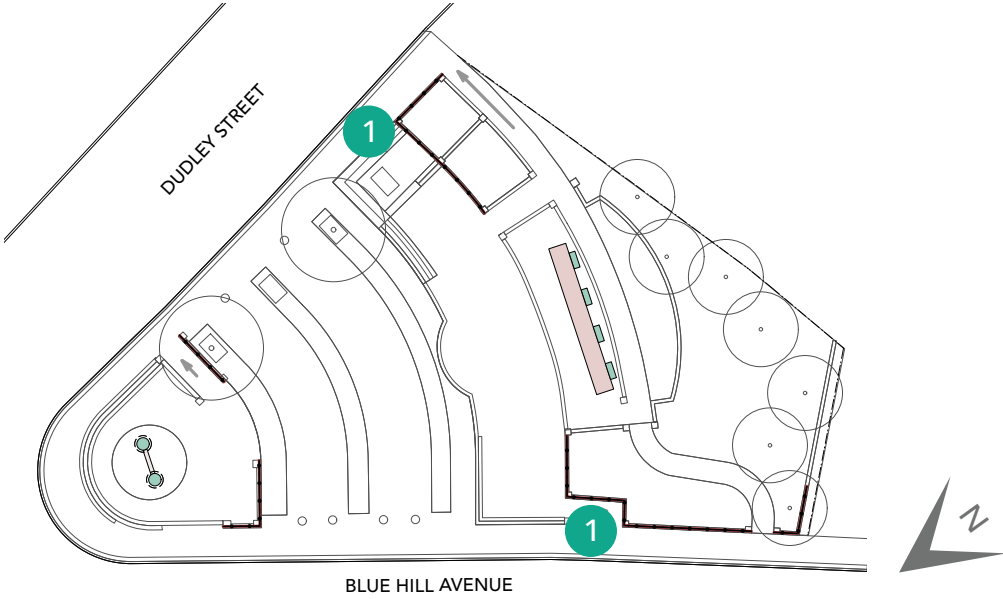


Southern Site – Elevation



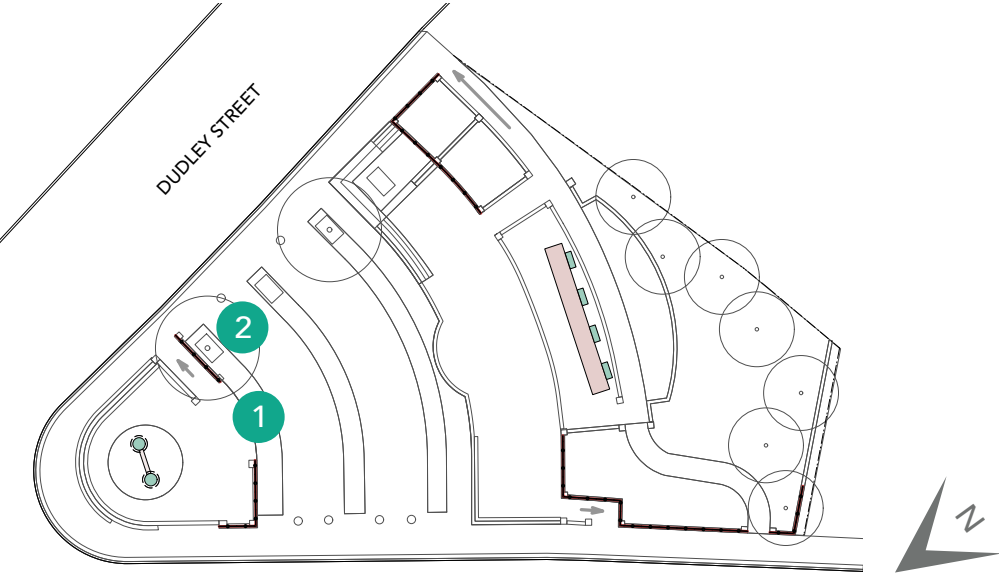


Southern Site – Concerns



1 Complicated edge and access into park - multiple level steps, railing, seat walls, ramp. Empty tree pits.

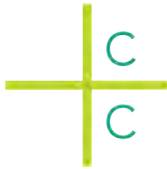
Southern Site – Concerns



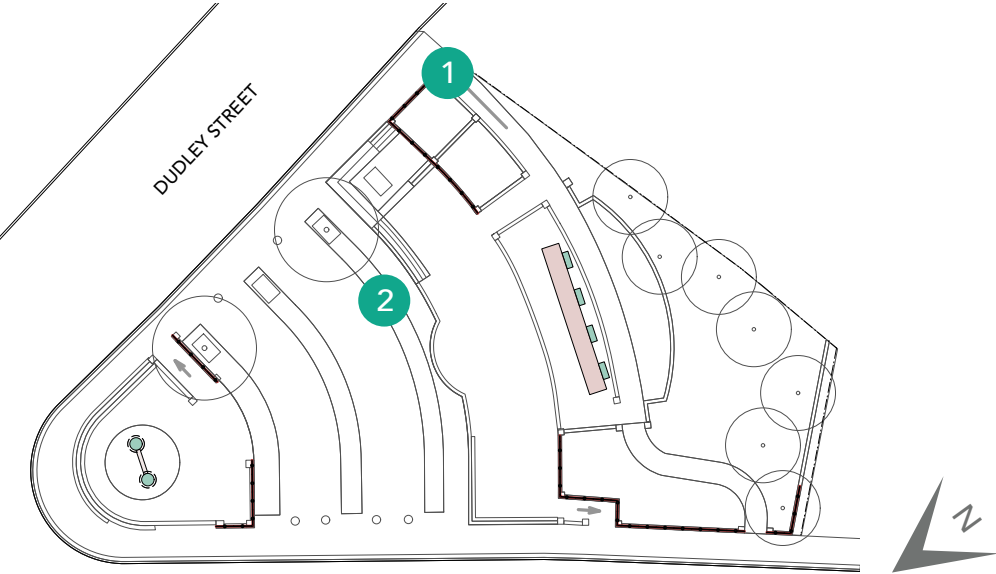
1 Multiple steps within plaza creating potential trip hazard. Ramps project into plaza further restricting and obstructing space.



2 Tree grate not adjusted for tree growth. Tree is root-bound and heaving paving and grate.



Southern Site – Concerns



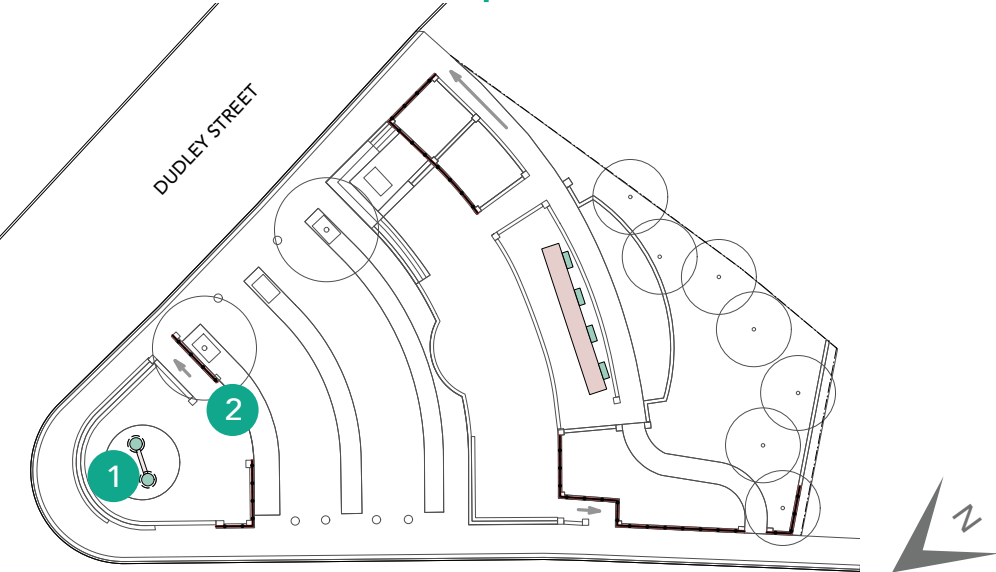
1 Path feels remote; unmaintained and overgrown plantings.



2 Cracking brick pavings; rat holes at the base of the pole lights.



Southern Site – Unique Features



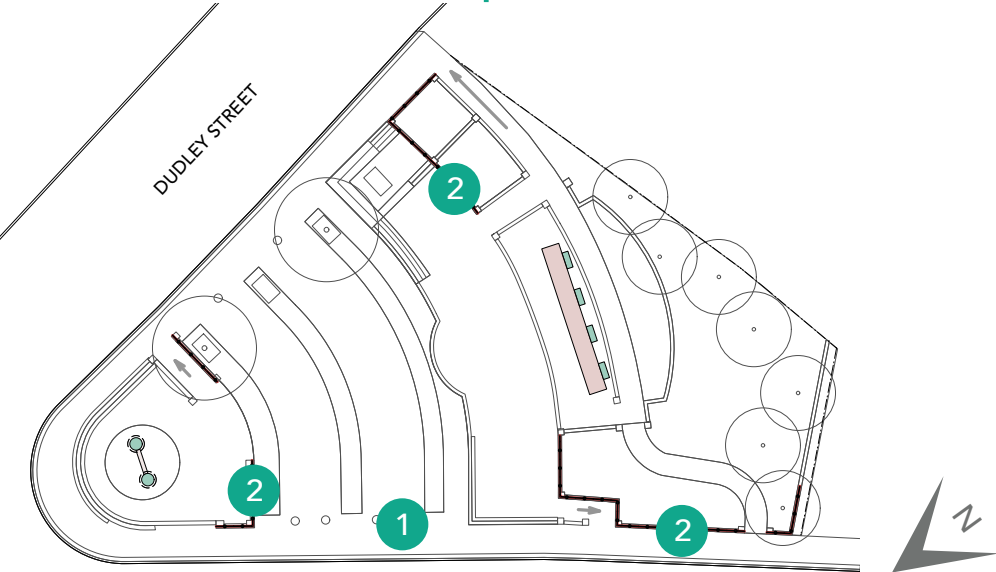
1 Monumental structural shows rust and visible holes; poor brick paving condition.



2 Brick etchings throughout site.



Southern Site – Unique Features



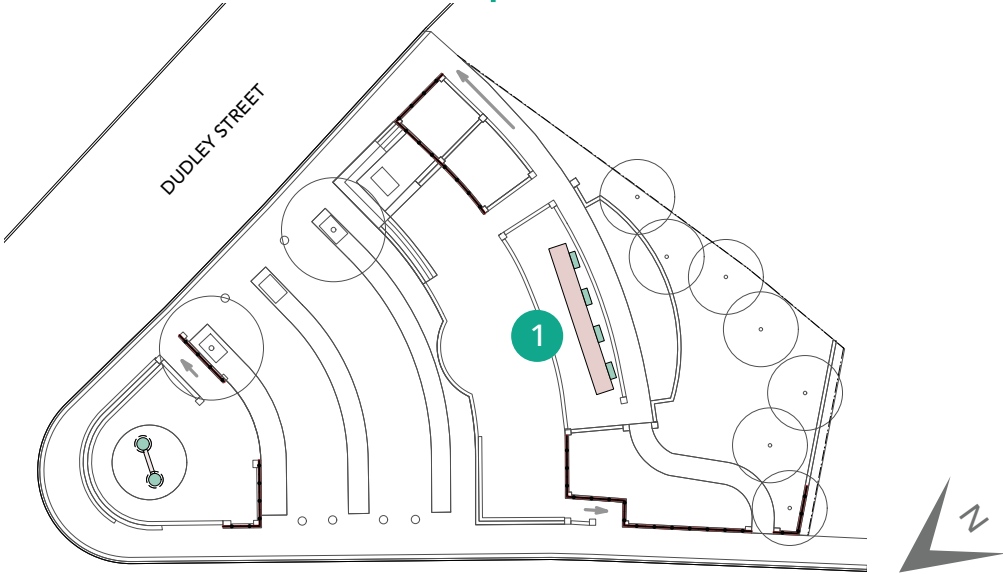
1 Mosaic inlays on concrete bollards.



2 The music on the fence is from the composition *Black Nairobi Moon* written by Roxbury jazz pianist and composer Highland Diggs.



Southern Site – Unique Features



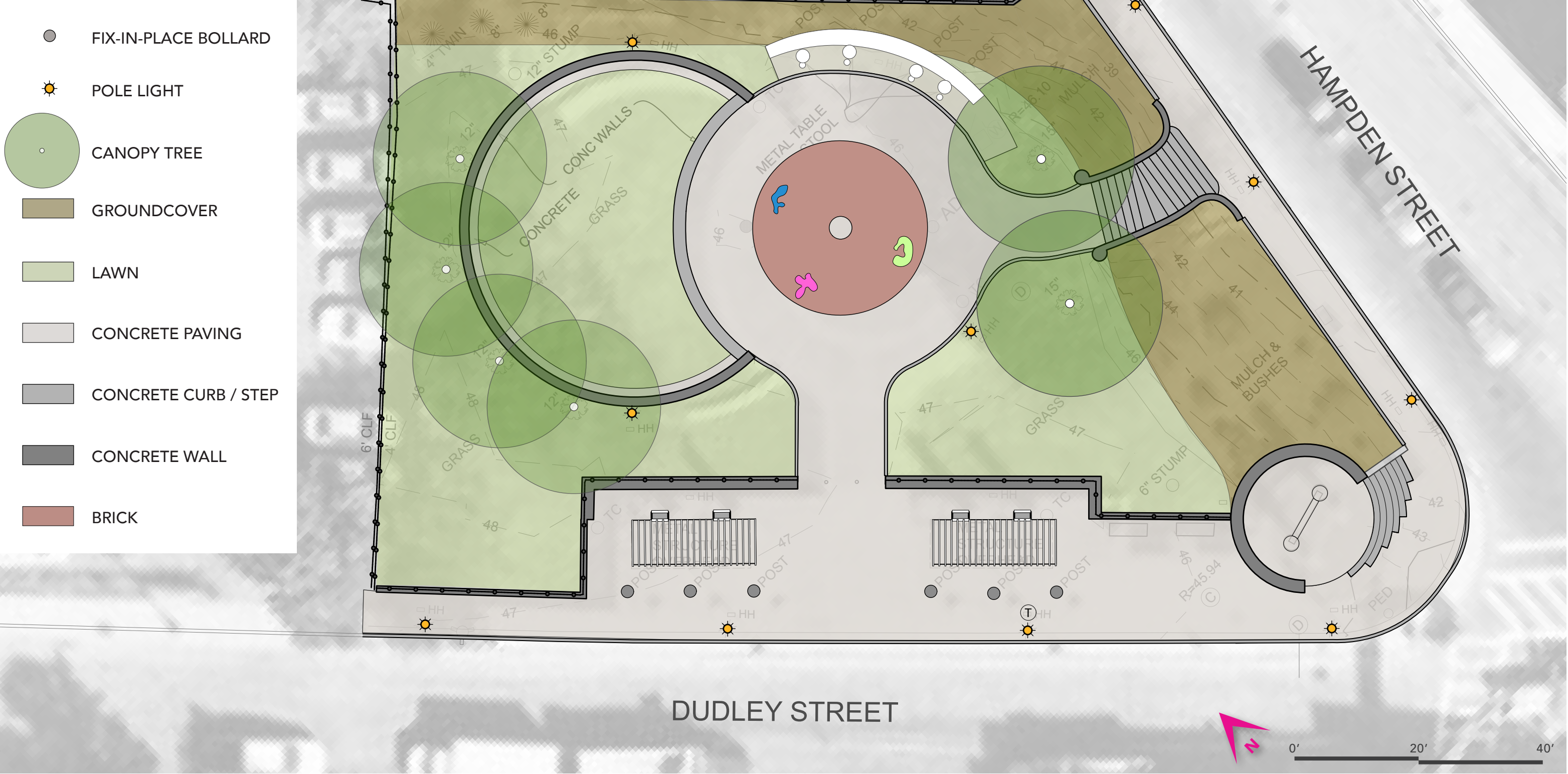
1 Fading paint at stage back-drop, non-functioning lights, paving cracks.



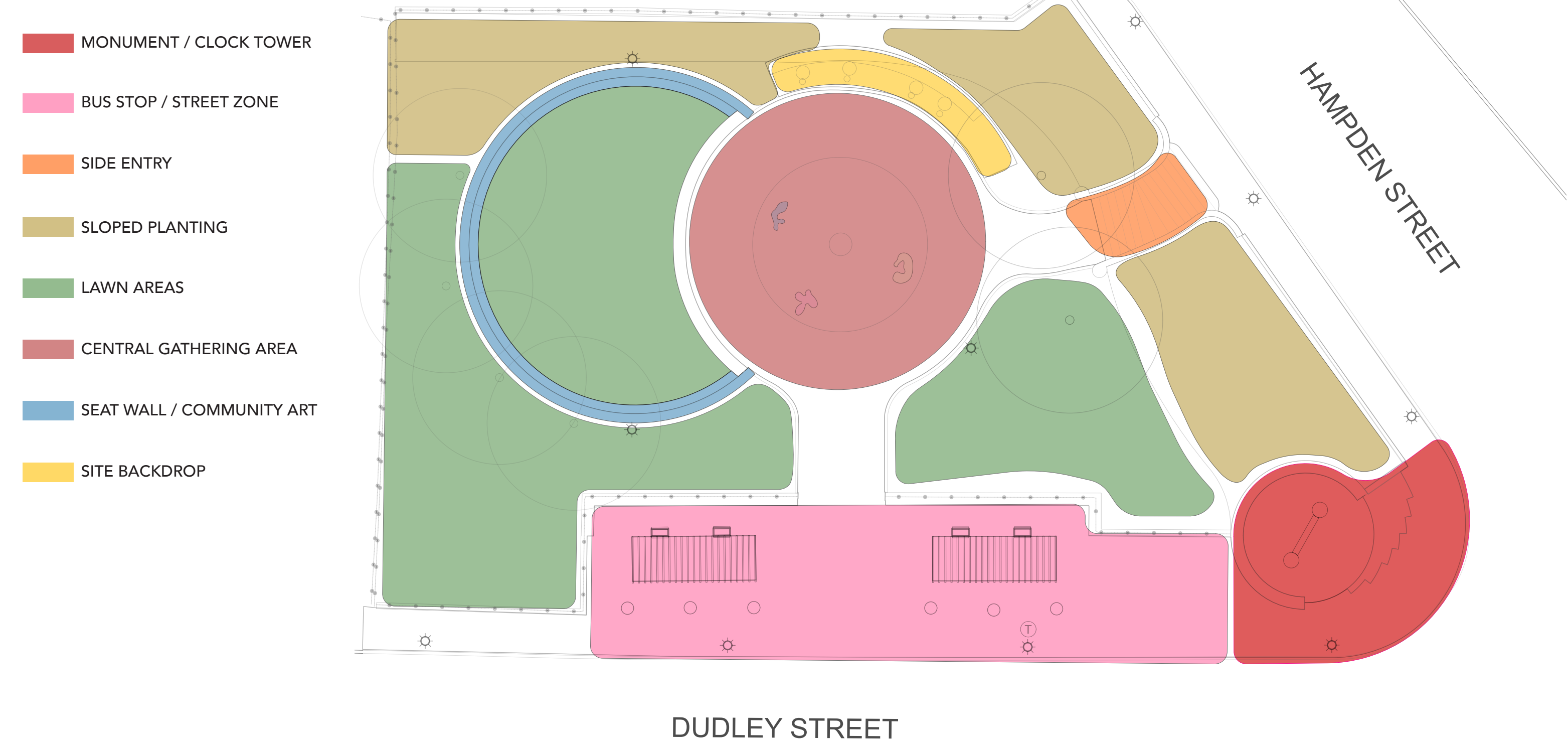
Southern Site



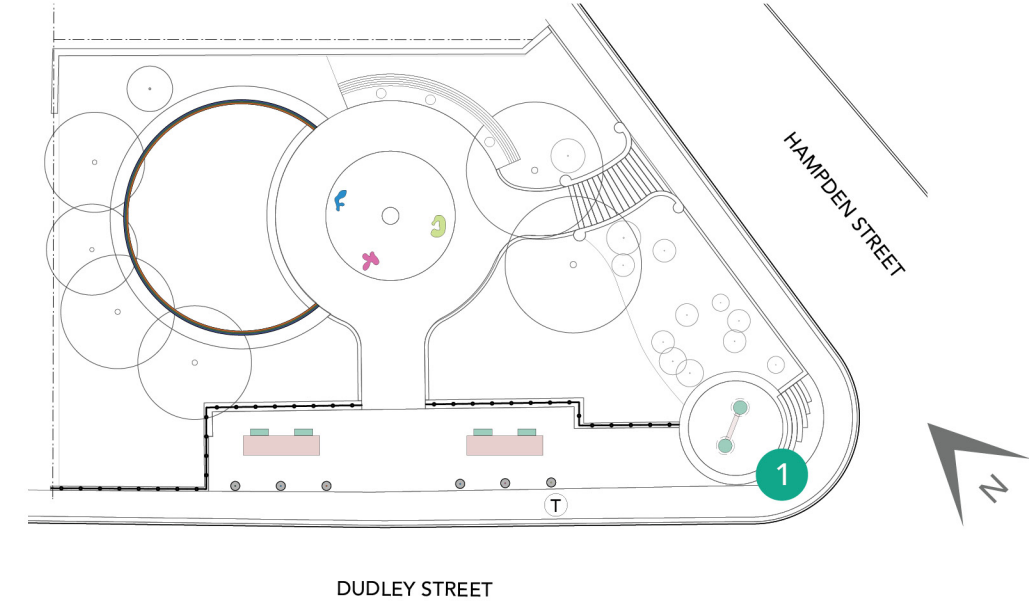
Northern Site



Northern Site – Character

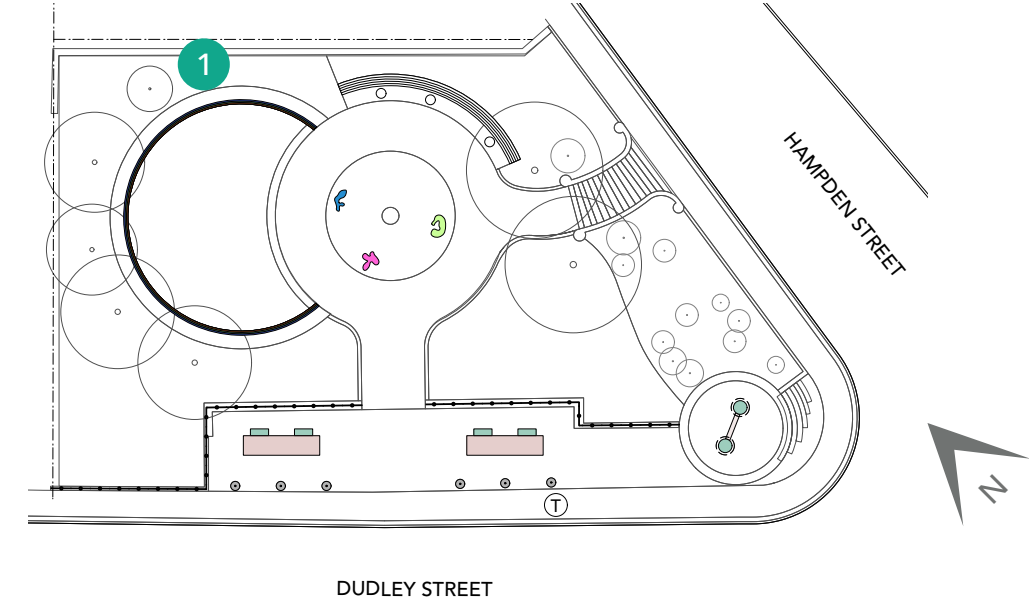


Northern Site – Concerns



1 Uneven concrete paving has compromised the ADA ramp’s functionality and poses a potential trip hazard.

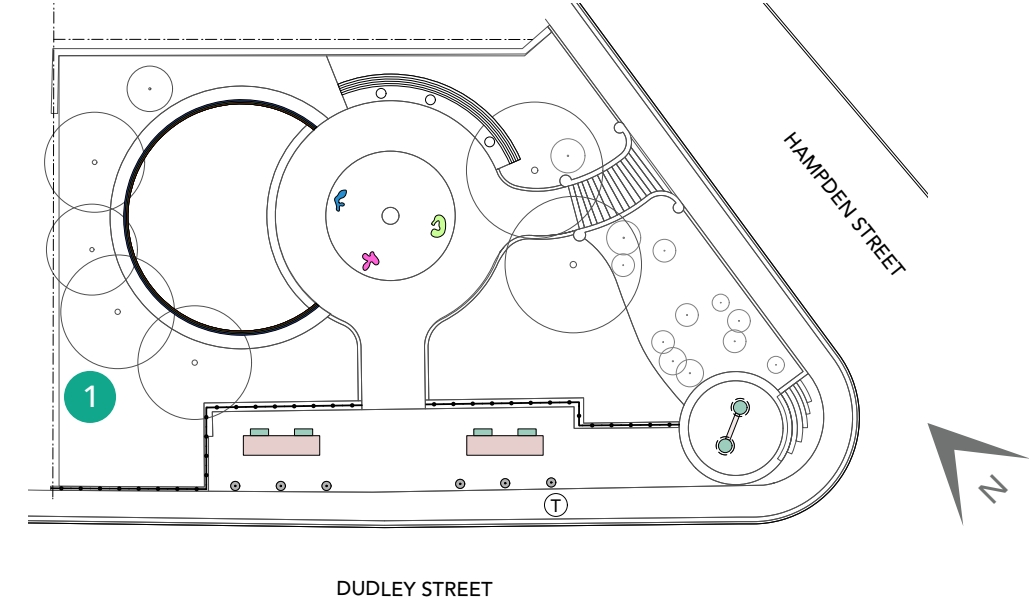
Northern Site – Concerns



1 Overgrown and unmanaged vegetation; erosion of the slope.



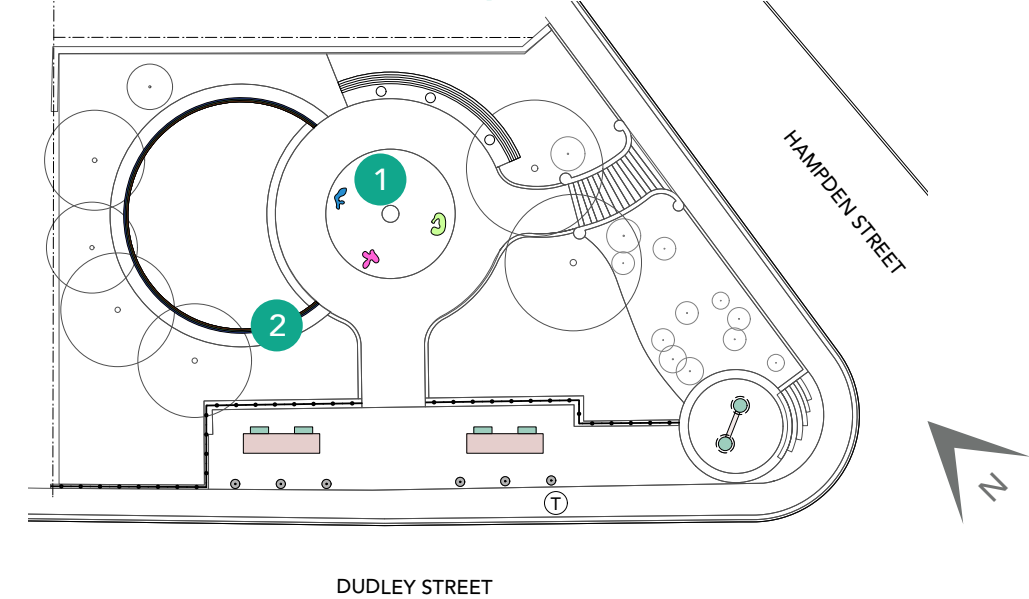
Northern Site – Concerns



1 Dead vegetation.



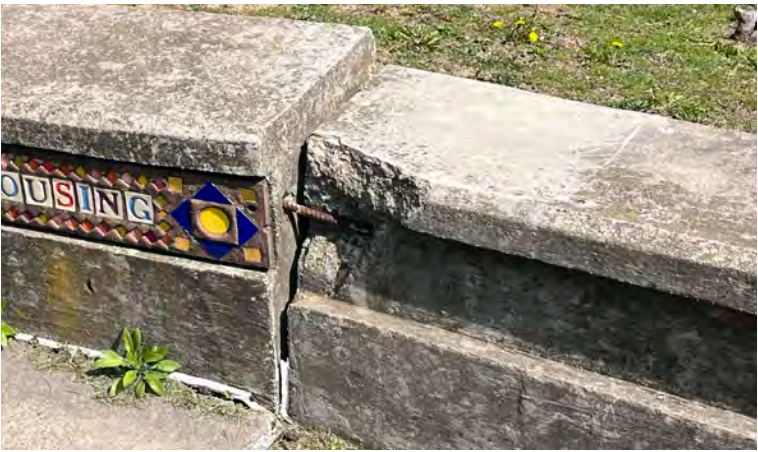
Northern Site – Unique Features



DECLARATION OF COMMUNITY RIGHTS: We the residents of the Dudley area have the right to participate in all planning, programs, and policies affecting our lives; celebrate our cultural diversity through the arts; quality, affordable, accessible and culturally sensitive health care; control the development of open space; a hazard free environment; enjoy a full, spiritual and religious life; education and training to meet our potential; share in the jobs and prosperity created by economic development; quality and affordable housing; affordable child care responsive to our needs; safe and accessible public transportation; quality goods and services in our area...



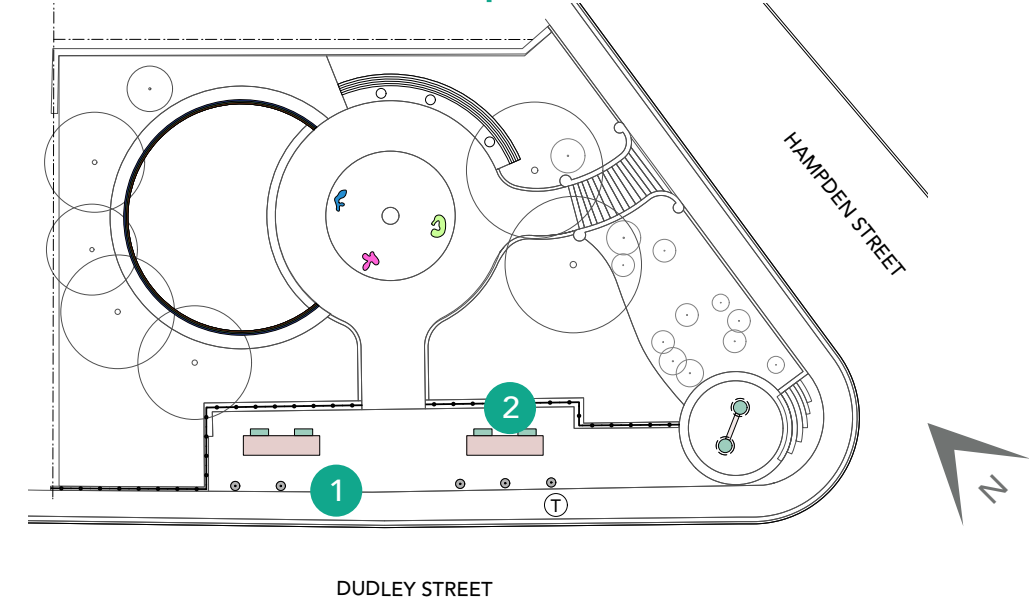
1 Mosaic inlay on decorative benches



2 Seat wall with mosaic inlay stating the "Declaration of Community Rights"



Northern Site – Unique Features



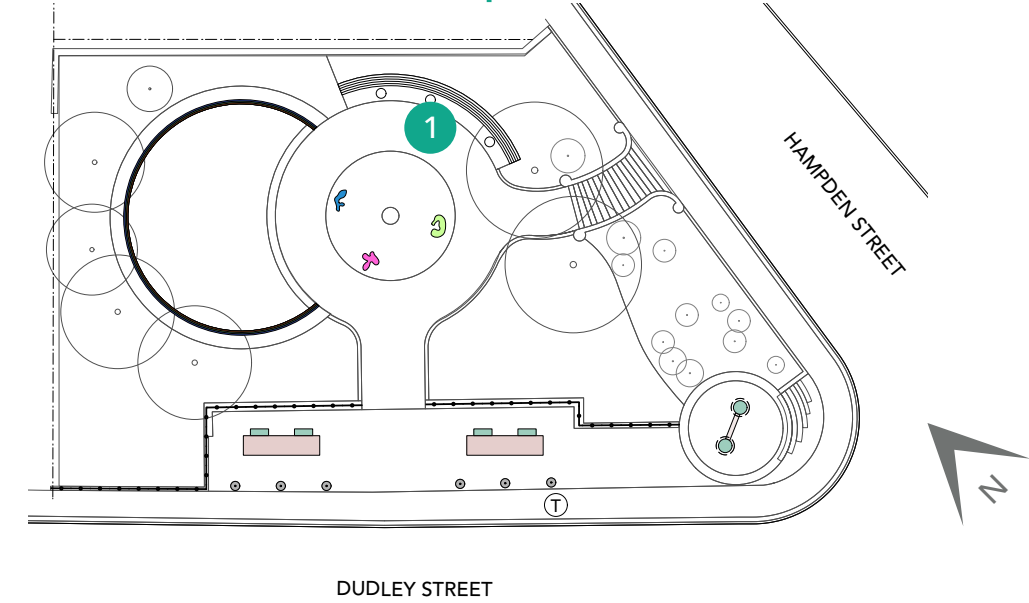
1 Mosaic inlays on concrete bollards



2 Bronze panels of the history of Roxbury



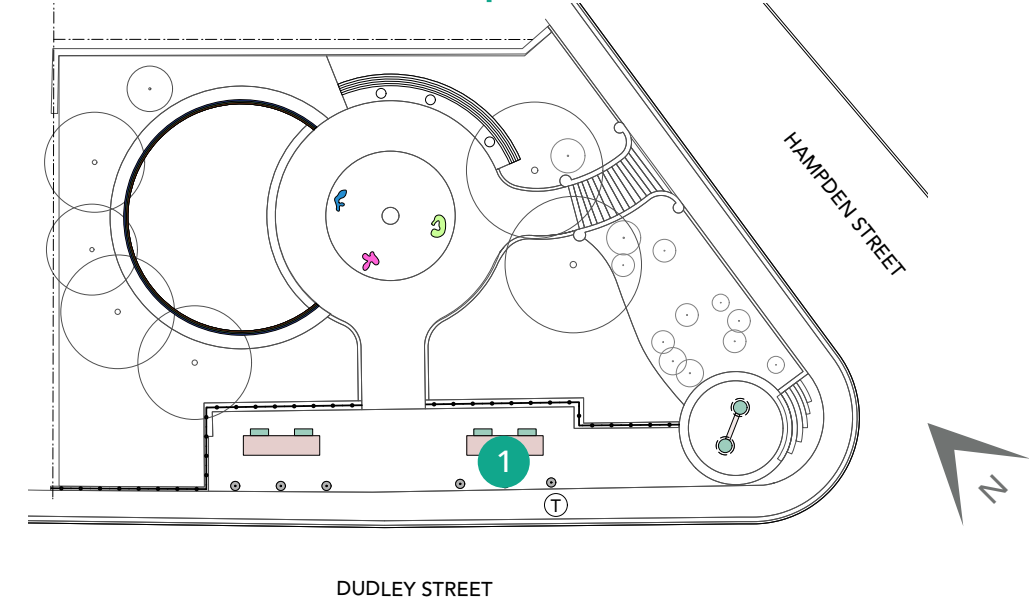
Northern Site – Unique Features



1 Fading paint at the globe seat; obstructed city view.



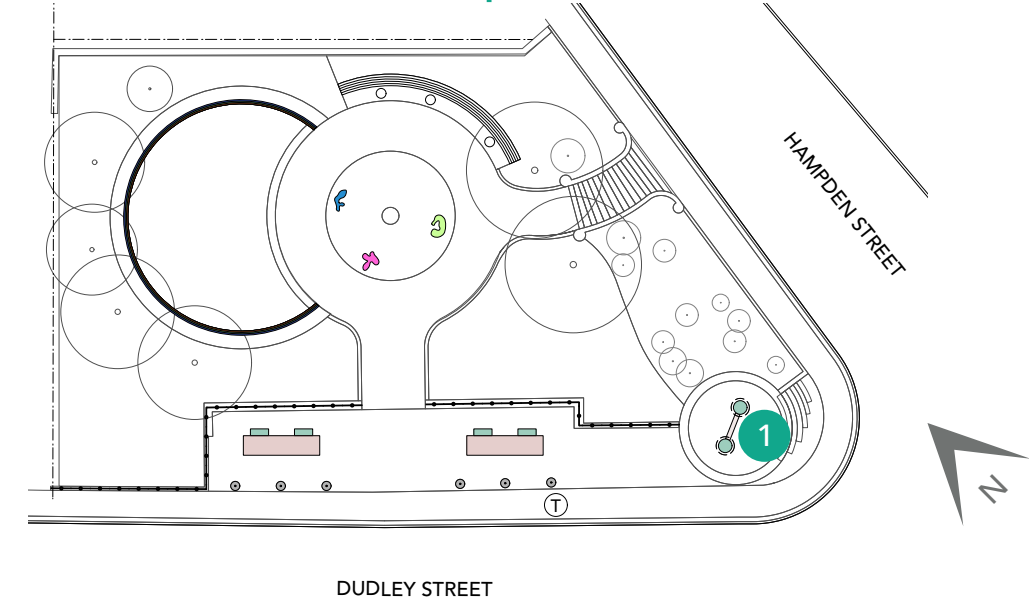
Northern Site – Unique Features



1 Bollards & shade structure do not contribute to bus stop and restrict site lines in park. Cracking and heaving of concrete paving. No defined seating.



Northern Site – Unique Features



1 Inaccessible; sculpture surface shows rust.

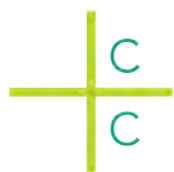


LEGEND:

- FIX-IN-PLACE BOLLARD
- POLE LIGHT
- CANOPY TREE
- GROUNDCOVER
- LAWN
- CONCRETE PAVING
- CONCRETE CURB / STEP
- CONCRETE WALL
- BRICK

Site Plan Details:

- Streets:** DUDLEY STREET (bottom), HAMPDEN STREET (right).
- Central Area:** A large circular area with a central brick circle (red) and a surrounding lawn area (light green). The lawn area is divided into sections by concrete walls (dark grey) and curbs (light grey).
- Plantings:** Several canopy trees (green circles) are shown, with labels like "4\" TWIN", "12\" STUMP", "15\" STUMP", and "6\" STUMP". Groundcover (brown) is used in various areas, including a large section on the right labeled "MULCH & BUSHES".
- Structures:** Two rectangular structures with vertical slats are located near the bottom center. A circular structure with a central pole is located on the right side.
- Lighting:** Pole lights (yellow sun symbols) are placed around the perimeter and within the lawn area.
- Other Features:** Concrete walls and curbs define the layout. A north arrow and a scale bar (0' to 40') are located at the bottom right.



Southern Site



LISTENING & DISCUSSION

Help us build great parks. Let us know what matters to you.

- What would you most like to see improved with the park redesign?
- How do you use the site?
- Is Dudley Town Common culturally significant to you? If so, are there specific site elements that are meaningful and why?



NEXT STEPS

NEXT COMMUNITY MEETING

Community Meeting on August 28, 2025,
to review design options.

VISIT PROJECT WEBSITE & TAKE THE SURVEY IF YOU HAVEN'T YET

English



https://docs.google.com/forms/d/e/1FAIpQLSd4zez6M6lcl6UGzlZ6AoCe_UKdfPgOjpn6f_ehk92YzXBURA/viewform?usp=header

Spanish



https://docs.google.com/forms/d/e/1FAIpQLSdJxtMDzlFa-8m8zfdjpiS8LklSbMZDe5URhdDiBiyF9_UK-g/viewform?usp=header

SCAN ME WITH YOUR
PHONE'S CAMERA!

TELL YOUR FRIENDS AND NEIGHBORS ABOUT THE PROJECT

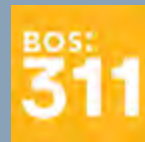
THANK YOU!



**Next Meeting
August 28, 2025**

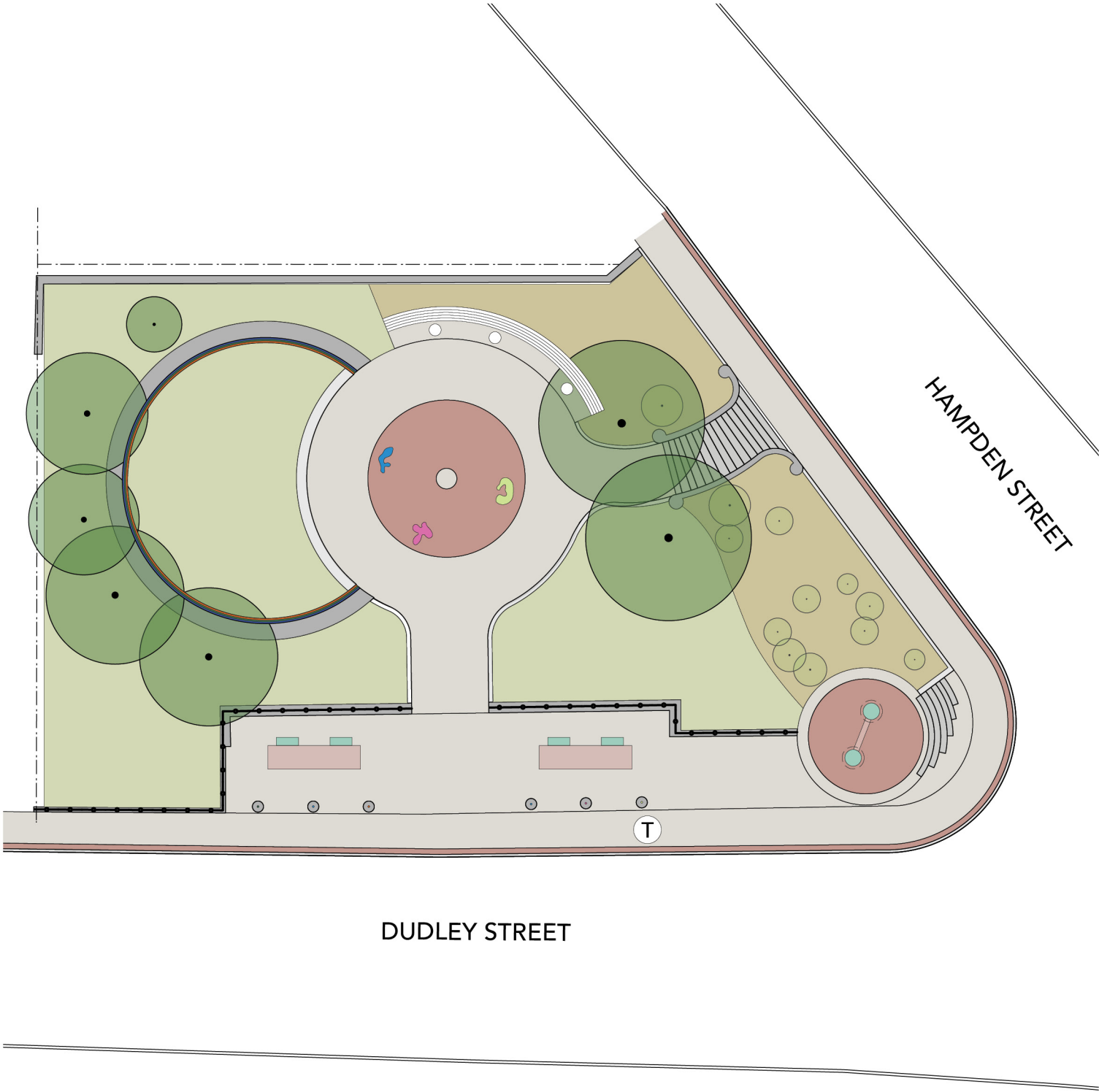
boston.gov/dudley-common

For questions, maintenance requests or
concerns regarding any of our
parks contact 311

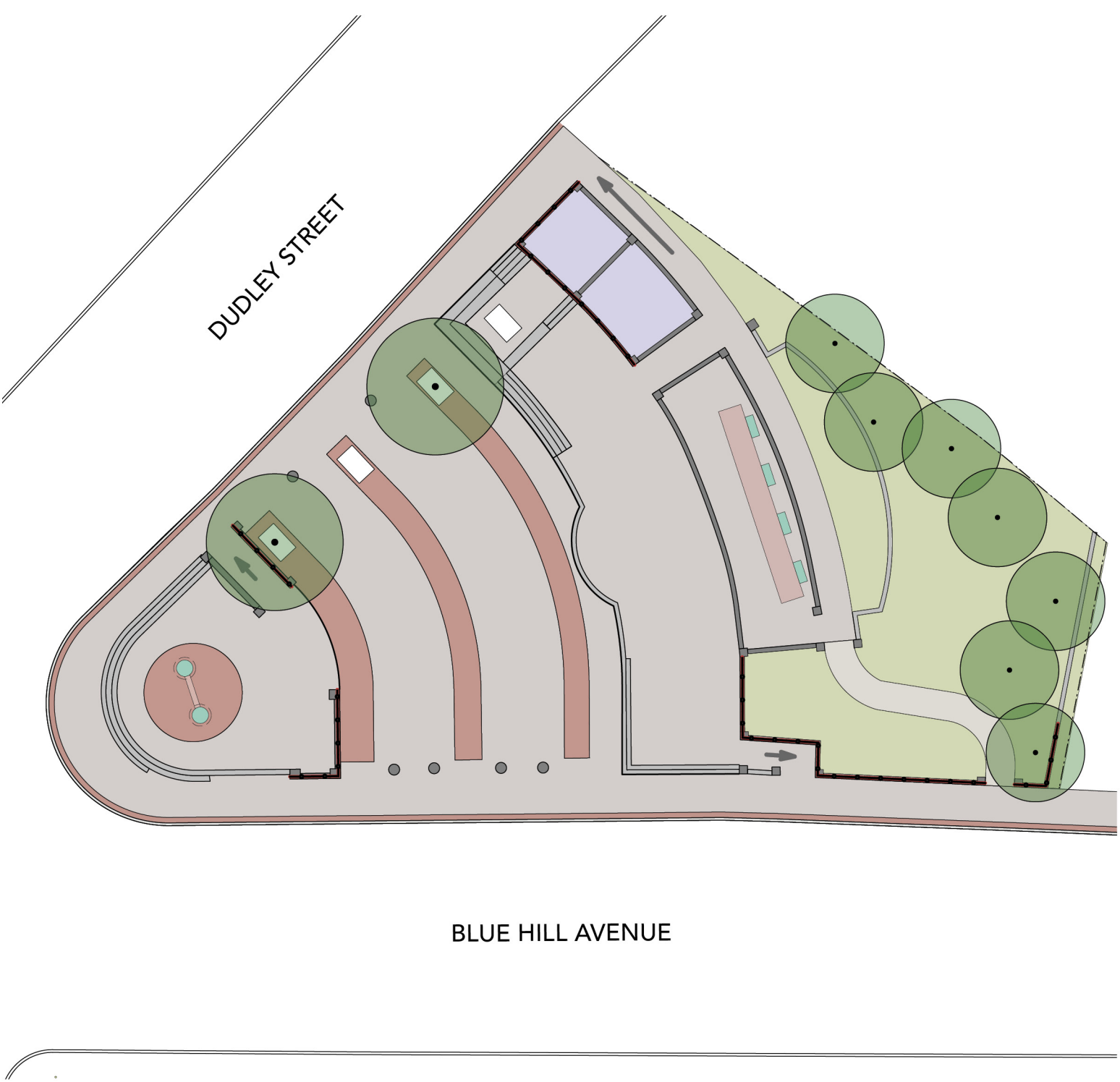


July 16, 2025
Boston Parks and Recreation





Northern Site



Southern Site

