

HARAMBEE PARK PHASE 4



PUBLIC MEETING # 2 January 19, 2022



City of Boston
Parks and Recreation

Weston & SampsonSM
DESIGN STUDIO

MEETING RECORDING



The Boston Parks and Recreation Department will be recording the meeting and posting to our project webpage for those who are unable to attend the Zoom meeting live.

It is possible that participants may also be recording the meeting with their phones cameras or other devices. If you do not wish to be recorded during this meeting, please keep your microphone and camera off.

VIRTUAL MEETING ETIQUETTE

We want to ensure this conversation feels accessible to everyone and each one of you feels comfortable sharing your questions and comments.

Please be respectful and mindful of other's time when asking questions/ providing comments, so that all attendees are able to participate in the meeting.

Keep questions/ comments project-specific and not personal to yield a solution driven discussion.

You can always set up a conversation with Amy Linné, amy.linne@boston.gov to further discuss the project or process.

ZOOM TIPS

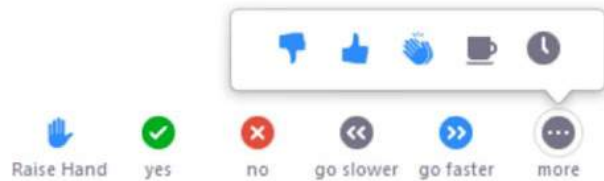
Here is how you can participate during the question and answer part of the presentation.

DURING THE PRESENTATION:



VIA WEB:

Turn video on / off.



To use these non-verbal options click on participants (bottom of screen); these options will pop up in side bar.

DURING THE Q&A:



JOINING VIA PHONE?

Use *9 to raise hand to ask for audio / video permission to ask questions or provide comments.



VIA WEB:

Chat to ask questions / comments or provide responses to poll questions



Raise hand to ask for audio / video permission to ask questions or provide comments.

HARAMBEE PARK PHASE 4

MEETING AGENDA

1

PROJECT TEAM INTRODUCTION

2

PROJECT OVERVIEW

3

PRESENTATION

4

LISTENING & DISCUSSION

5

CLOSING REMARKS & NEXT STEPS

HARAMBEE PARK PHASE 4

PROJECT TEAM

Amy Linné

Project Manager, BPRD

amy.linne@boston.gov

Christine Brandao

Community Outreach Coordinator, BPRD

christine.brandao@boston.gov

Eric James

Office of Neighborhood Services

eric.james@boston.gov

Amanda Gaal

Project Manager, Weston & Sampson

Lanie Cohen

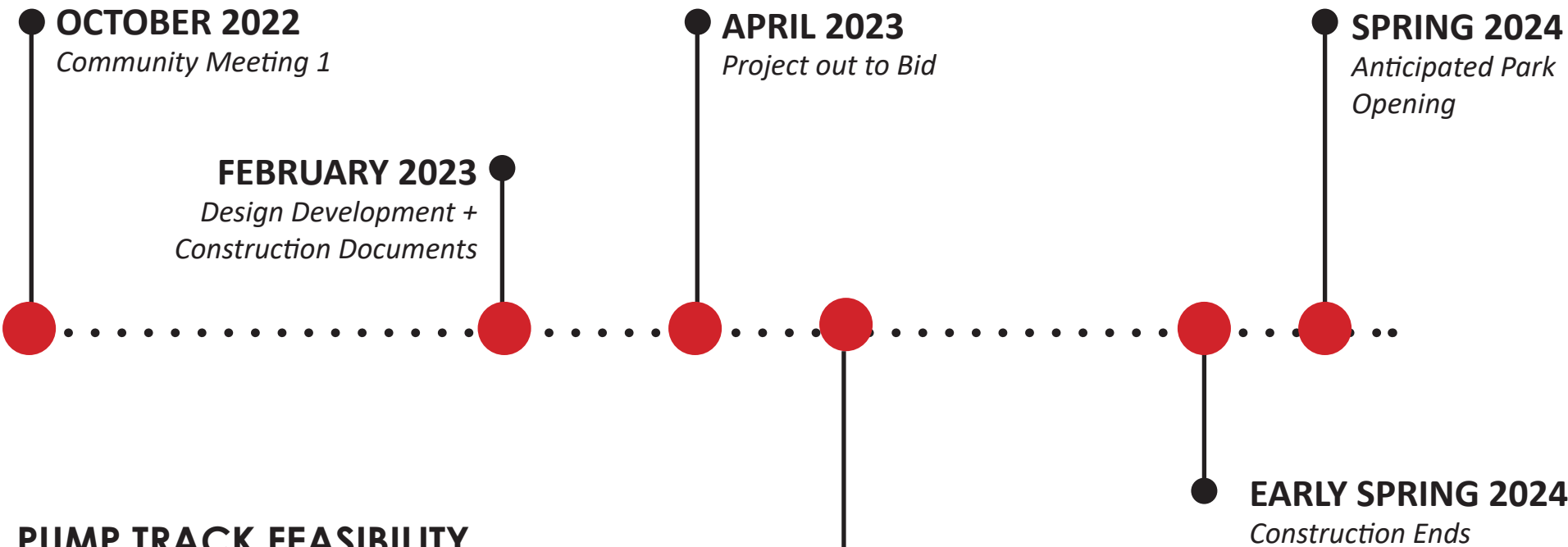
Landscape Designer, Weston & Sampson



HARAMBEE PARK PHASE 4

PROJECT SCHEDULE + FUNDING

CRICKET FIELDS



PUMP TRACK FEASIBILITY



HARAMBEE PARK PHASE 4

PROJECT APPROACH



HARAMBEE PARK PHASE 4

CITY OF BOSTON PRIORITIES

- Expanding walkable access to parks
- Addressing equity
- Climate resilience
- Health
- Housing and community building



HARAMBEE PARK PHASE 4

PARKS AND RECREATION GOALS

- Accessible and available to all
- Diverse, balanced, and efficient mix of uses
- Meaningful and inclusive community engagement
- Adaptive and resilient landscapes
- Promote connections



HARAMBEE PARK PHASE 4

MASTER PLAN IMPLEMENTATION



1. **Harambee Park Master Plan: COMPLETE!**
2. **Harambee Park Phases 1 - 3: COMPLETE!**
3. **Harambee Park Phase 4: IN PROGRESS**

HARAMBEE PARK PHASE 4

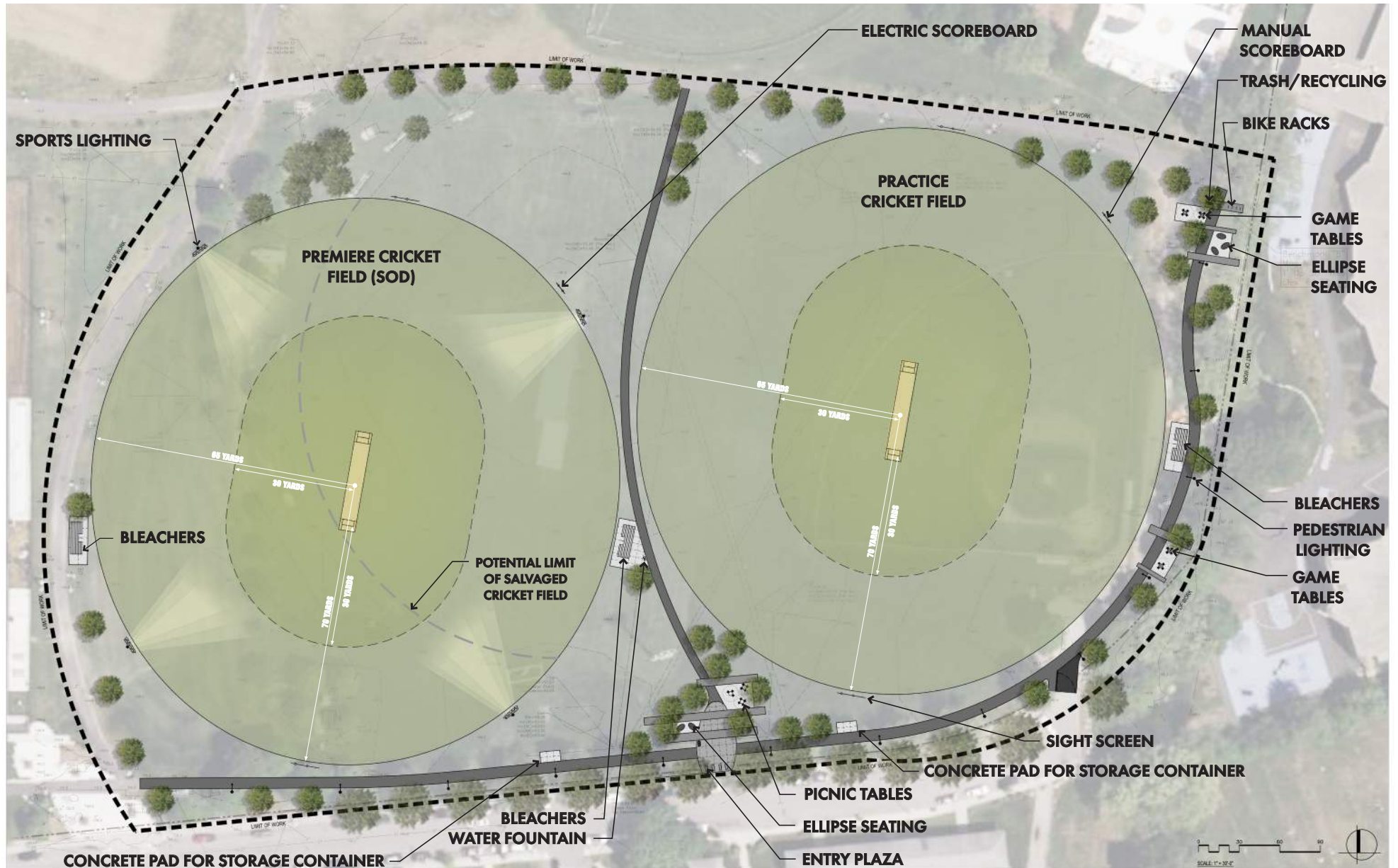
HARAMBEE PARK MASTER PLAN REVIEW



HARAMBEE MASTER PLAN - PHASING

HARAMBEE PARK PHASE 4

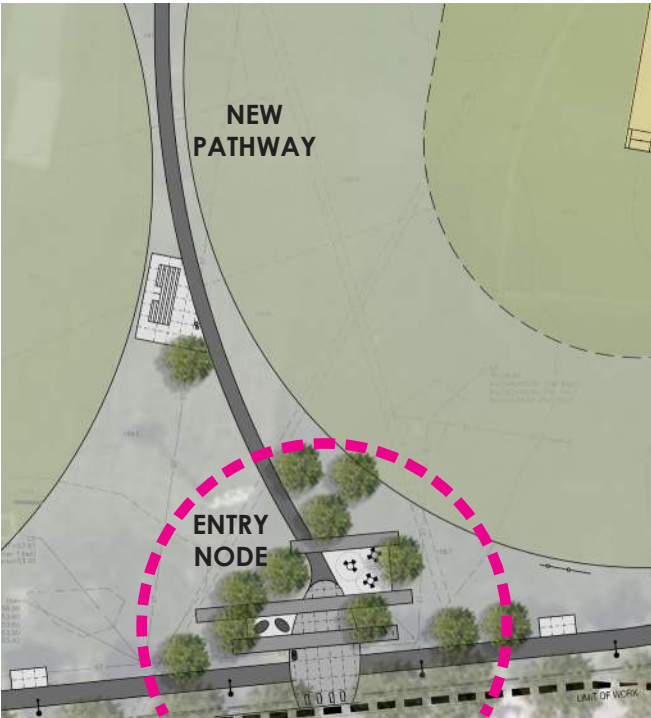
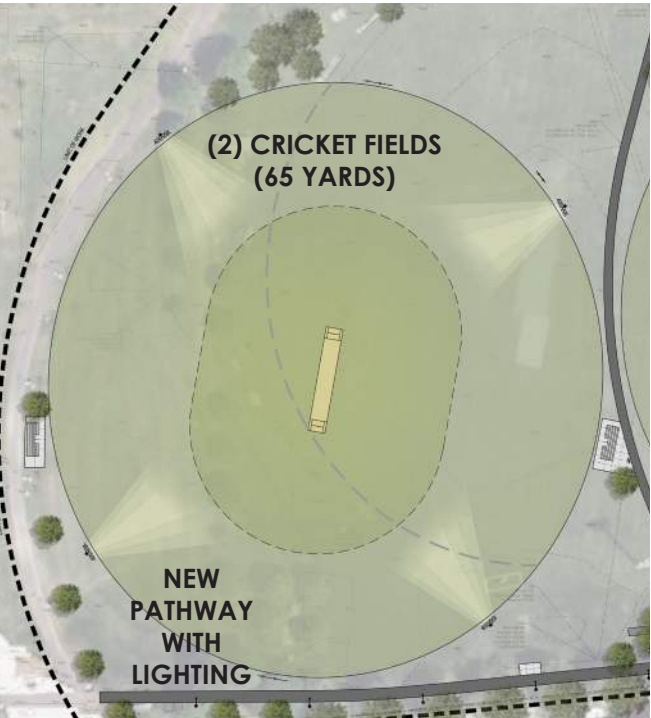
PHASE 4 UPDATED DESIGN CONCEPT



CONCEPT PLAN

HARAMBEE PARK PHASE 4

PHASE 4 UPDATED DESIGN CONCEPT



PRECEDENT IMAGES

HARAMBEE PARK PHASE 4

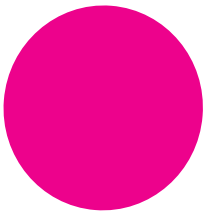
DOG PARK / PUMP TRACK FEASIBILITY

DOG PARK RECOMMENDATIONS:

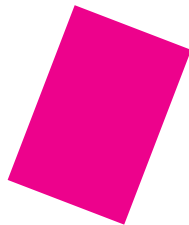
- 10,000 SF minimum size
- Fenced
- Relatively flat

PUMP TRACK RECOMMENDATIONS:

- 5000 SF minimum
- 10000 SF for “competition” track



CRICKET FIELD
(130,000 sf)



SOCCER FIELD
(74,000 sf)



FOOTBALL FIELD
(72,500 sf)



BASEBALL FIELD
(39,000 sf)



APPX. PUMP
TRACK SIZE
(10,000 sf)



APPX. DOG
PARK SIZE
(10,000 sf)

HARAMBEE PARK PHASE 4

PUMP TRACK PRECEDENTS



SMITH PLAYGROUND
ALLSTON, MA (8,400 sf)



CREEDSIDE PARK,
PENNSYLVANIA (9,100 sf)



EARL THOMAS CONLEY PARK,
OHIO (9700 sf)

HARAMBEE PARK PHASE 4

DOG PARK PRECEDENTS



DEFILIPPO DOG PARK
NORTH END (8,300 sf)



RONAN DOG PARK,
DORCHESTER (6,400 sf)



PETERS PARK,
SOUTH END (14,000 sf)

HARAMBEE PARK PHASE 4

DOG PARK AMENITIES



DOGGIE BAG DISPENSER /
TRASH BIN



SEATING



DOG DRINKING FOUNTAIN
+ HOSE BIB



RICE STONE SURFACING

HARAMBEE PARK PHASE 4

LISTENING & DISCUSSION



HARAMBEE PARK PHASE 4

CLOSING REMARKS & NEXT STEPS

Dog Park / Pump Track Survey

<https://www.surveymonkey.com/r/9SZ7S8N>

Harambee Park - BPRD Webpage

www.boston.gov/improvements-harambee-park

Amy Linné

Project Manager, BPRD

amy.linne@boston.gov