

The background image shows a park scene. In the foreground, there's a grassy area with a long shadow cast by a tree on the left. In the middle ground, there's a baseball field with a dirt infield and a grassy outfield, enclosed by a chain-link fence. Several trees are scattered throughout the park, and a tall stadium light is visible in the distance under a clear blue sky.

Improvements to **JEFFERSON PLAYGROUND**



MEETING RECORDING



The Boston Parks and Recreation Department will be recording the meeting and posting to our project webpage for those who are unable to attend the Zoom meeting live.

It is possible that participants may also be recording the meeting with their phones, cameras or other devices. If you do not wish to be recorded during this meeting, please keep your microphone muted and camera off.

*Please share with your neighbors and friends,
boston.gov/jefferson-playground*

VIRTUAL MEETING ETIQUETTE

We want to ensure this conversation is a pleasant experience for all and that all community members/stakeholders are comfortable sharing their comments, questions and feedback.

Please be respectful and mindful of each other's time when asking questions/ providing comments, so that all attendees are able to participate in the meeting.

Keep questions/ comments project-specific and not personal to yield solution-driven discussion.

Please wait until all attendees have had the opportunity to ask a question/ provide a comment before providing additional questions/ comments.

*You can always set up a conversation with **Max Sell**, max.sell@boston.gov, to further discuss the project or process.*

ZOOM TIPS

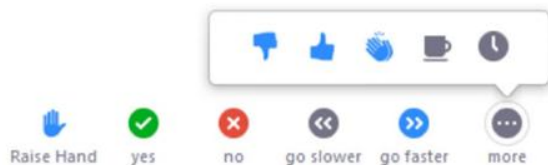
Here is how you can participate during the question and answer part of the presentation.

DURING THE PRESENTATION:



VIA WEB:

Turn video on / off.



To use these non-verbal options click on participants (bottom of screen); these options will pop up in side bar.

DURING THE Q&A:



JOINING VIA PHONE?

Use *9 to raise hand to ask for audio / video permission to ask questions or provide comments.



VIA WEB:

Chat to ask questions / comments or provide responses to poll questions



Raise hand to ask for audio / video permission to ask questions or provide comments.

AGENDA

1

PROJECT TEAM INTRODUCTION

2

PROJECT OVERVIEW

3

PRESENTATION

4

LISTENING & DISCUSSION

5

CLOSING REMARKS & NEXT STEPS

PROJECT TEAM

MAX SELL

PROJECT MANAGER

Max.sell@boston.gov or 617-961-3097

MY'KEL MCMILLEN

OUTREACH COORDINATOR, EXTERNAL AFFAIRS

Corey.mcmillen@boston.gov or 617-201-1294

CAROLINE PETERS

JAMAICA PLAIN LIAISON

OFFICE OF NEIGHBORHOOD SERVICES

Caroline.Peters@boston.gov or 617-635-2677

ARCADIS

Cathy Offenbergh, Principal

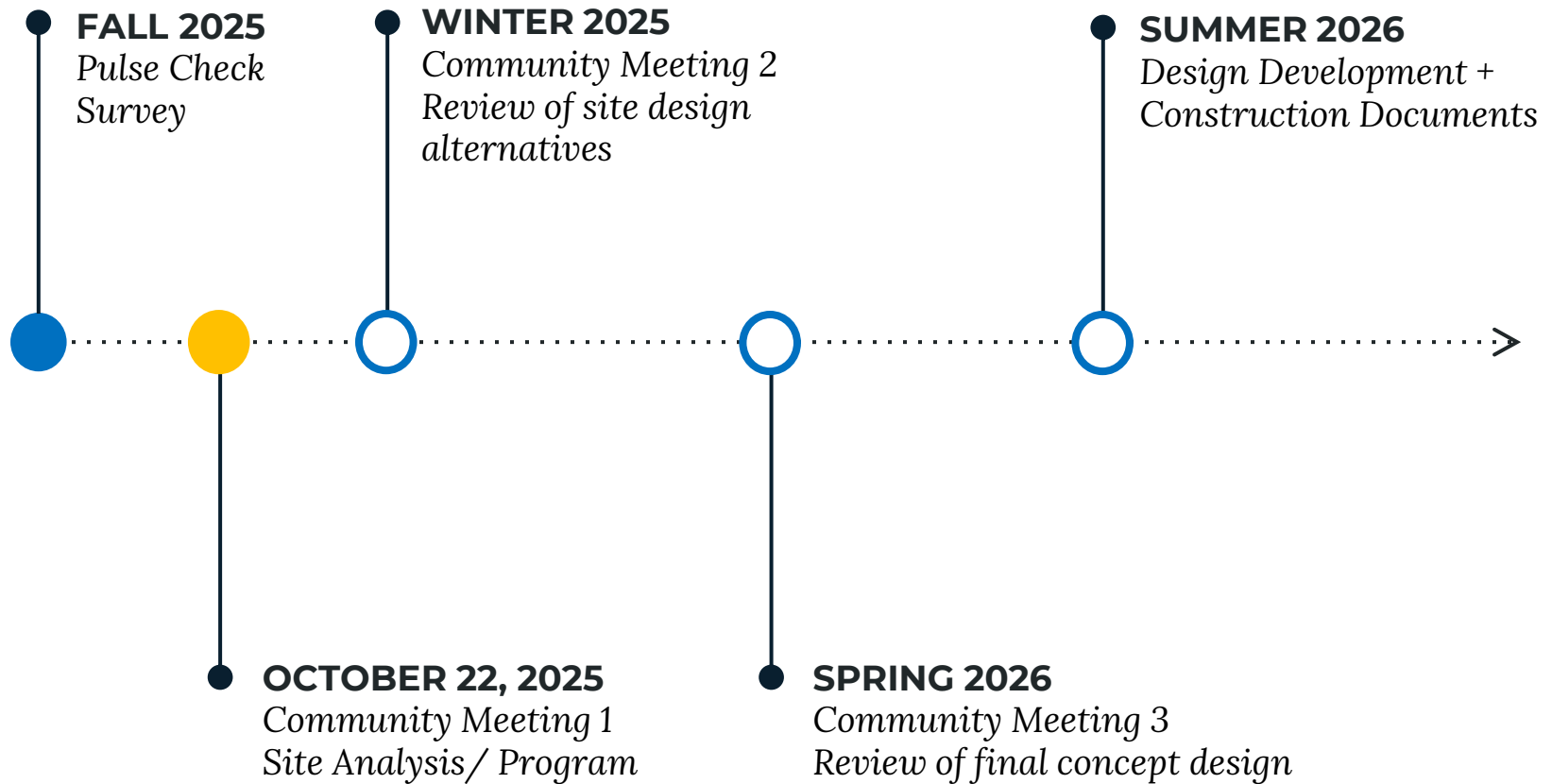
Uma Sekar, Senior Associate (Project Manager)



PROJECT OVERVIEW



PROJECT SCHEDULE & FUNDING



CITY OF BOSTON PRIORITIES

- **Expanding walkable access to parks**
- **Addressing equity**
- **Climate resilience**
- **Health**
- **Housing and community building**



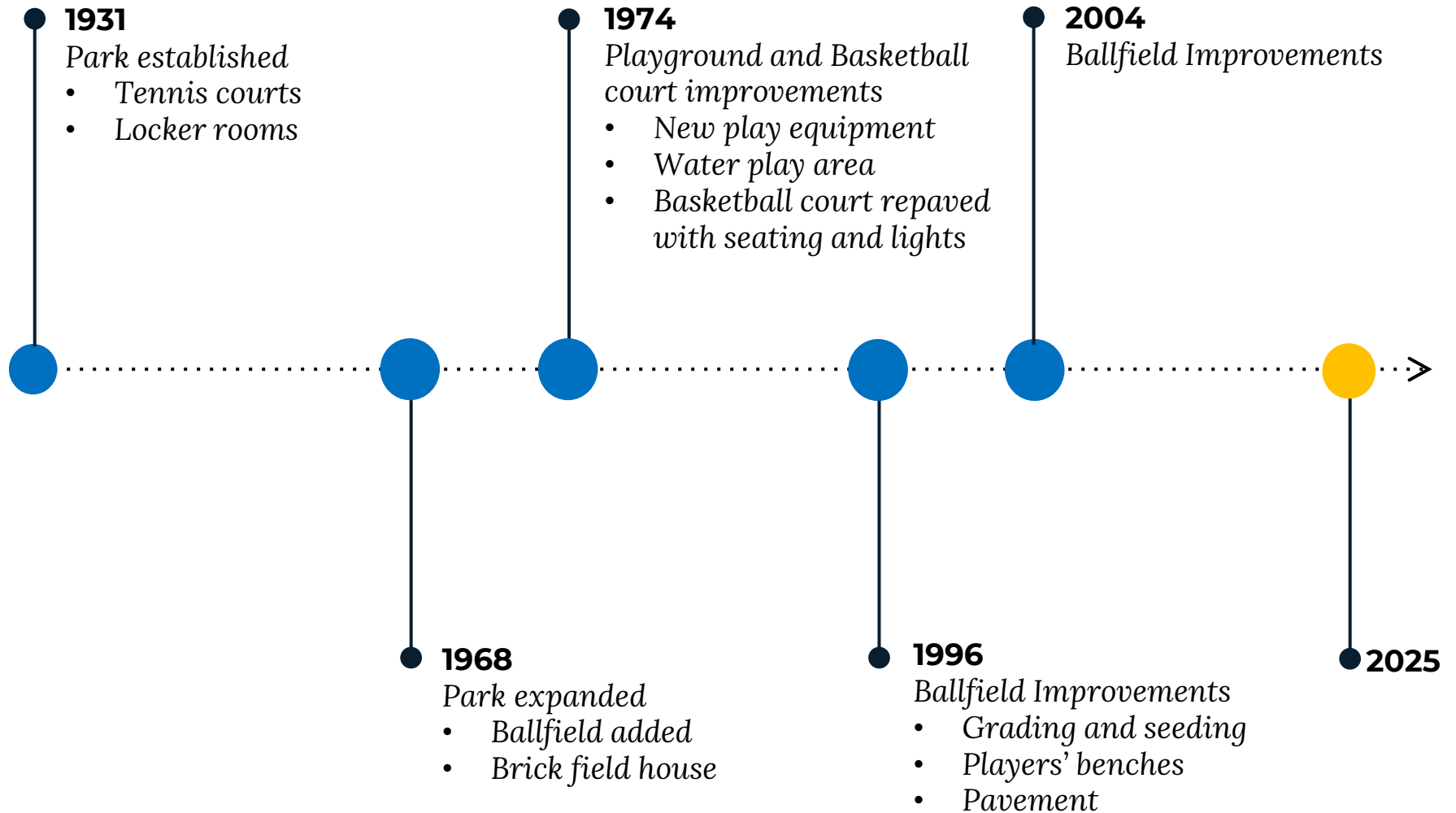
PARK & RECREATION GOALS

- Accessible and available to all
- Diverse, balanced, and efficient mix of uses
- Meaningful and inclusive community engagement
- Adaptive and resilient landscapes
- Promote connections

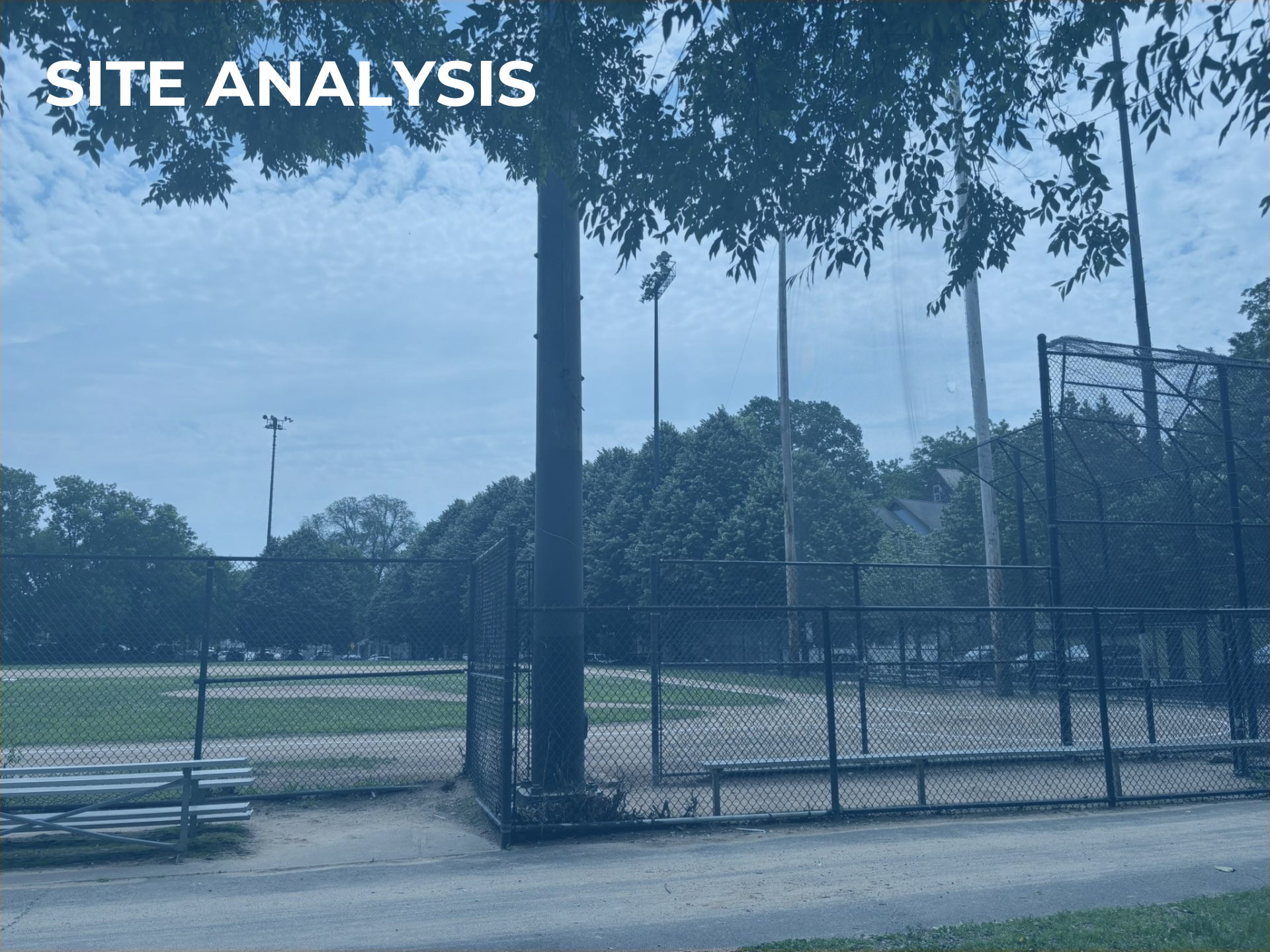




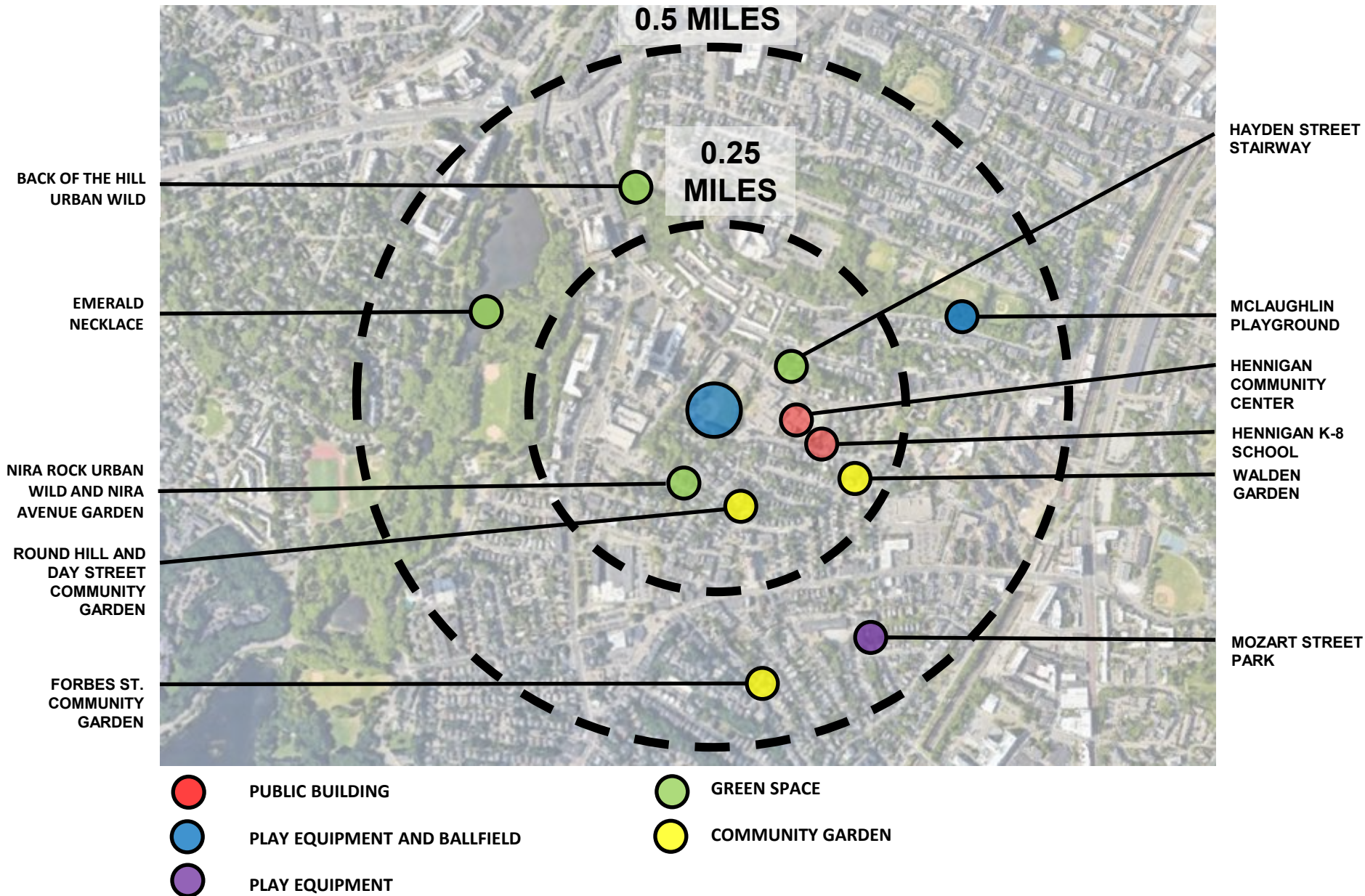
PARK TIMELINE



SITE ANALYSIS



SITE CONTEXT – HYDE SQUARE NEIGHBORHOOD



SITE CONTEXT – PARKS/OPEN SPACES

WITHIN 1 / 4 MILE RADIUS:



NIRA ROCK URBAN WILD:

- Open meadow/ orchard, Puddingstone outcropping



ROUND HILL AND DAY STREET COMMUNITY GARDEN:

- Garden Plots



WALDEN STREET GARDEN:

- Garden Plots, seating



HAYDEN STREET STAIRWAY

- Stairway: part of walking trail

SITE CONTEXT – PARKS/OPEN SPACES

WITHIN 1 / 2 MILE RADIUS:



FORBES ST. COMMUNITY GARDEN:

- Garden plots



MOZART STREET PARK:

- Basketball court, playground, splash pad



MCLAUGHLIN PLAYGROUND:

- Softball field, Little League field, batting cage, playground, tot lot, basketball courts, walking path



EMERALD NECKLACE:

- Biking path, walking path, playground/ tot lot. Picnic area

SITE CONTEXT – PUBLIC BUILDINGS

WITHIN 1 / 4 MILE RADIUS

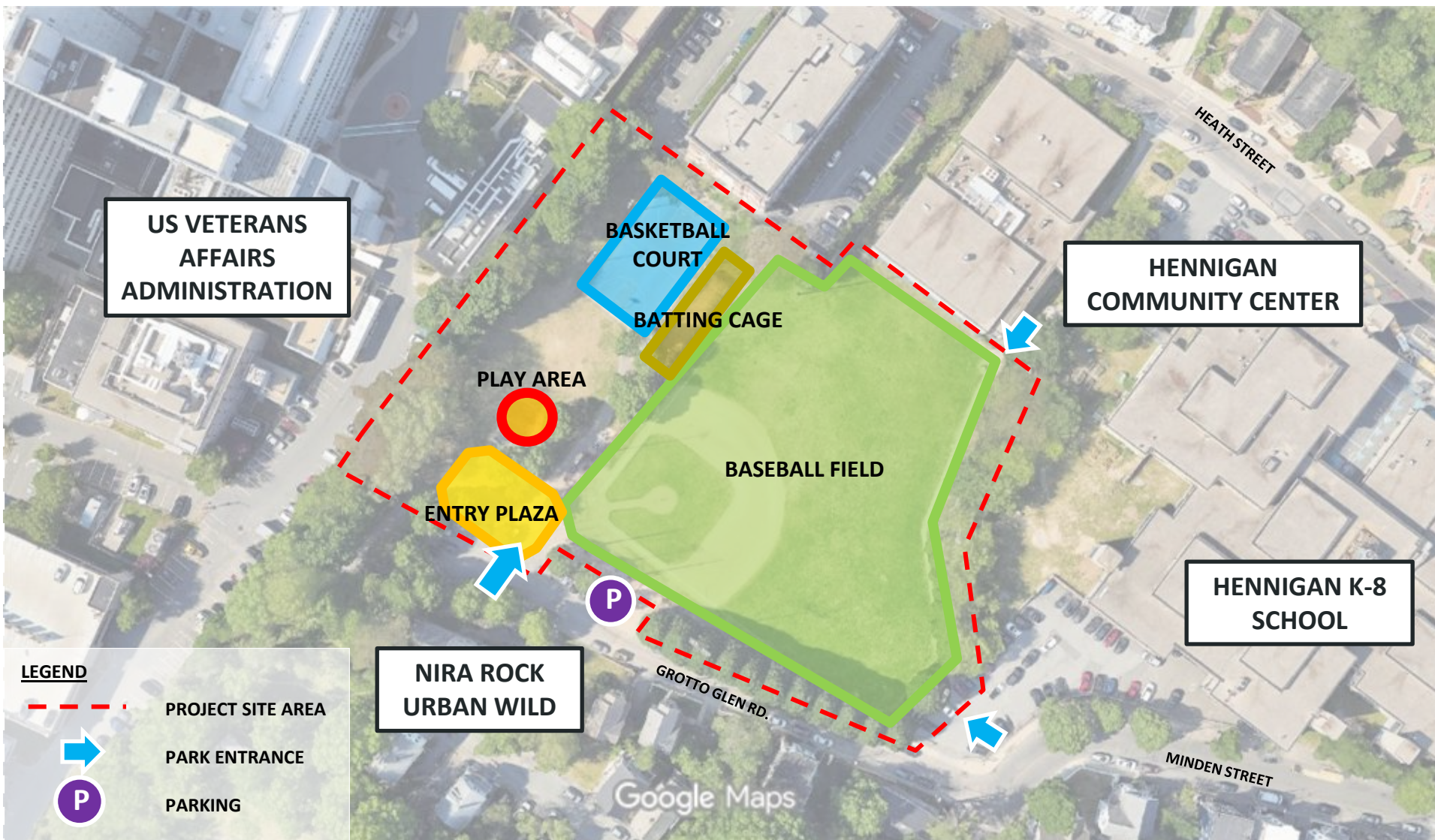
HENNIGAN K-8 SCHOOL

HENNIGAN COMMUNITY CENTER:

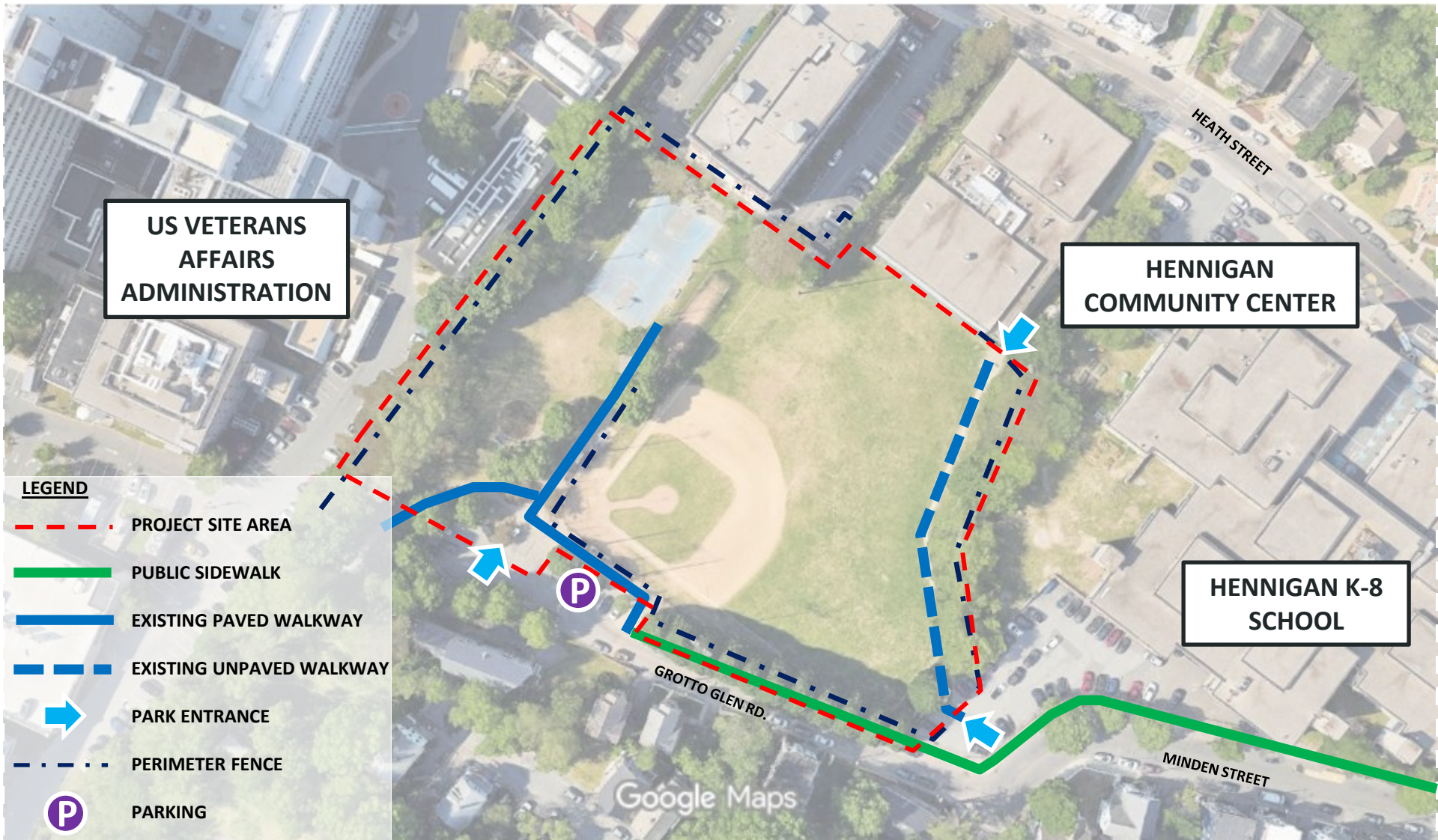
- Fitness center, indoor pool (closed since 2023), teen center



SITE ANALYSIS: EXISTING PROGRAM



SITE ANALYSIS: CIRCULATION



US VETERANS
AFFAIRS
ADMINISTRATION

HENNIGAN
COMMUNITY CENTER

HENNIGAN K-8
SCHOOL

LEGEND

PROJECT SITE AREA

PUBLIC SIDEWALK

EXISTING PAVED WALKWAY

EXISTING UNPAVED WALKWAY

PARK ENTRANCE

PERIMETER FENCE

PARKING

GROTTO GLEN RD.

MINDEN STREET

HEATH STREET

Google Maps

EXISTING WALKWAYS



CRACKS IN PAVEMENT



TRIPPING HAZARDS



UNPAVED WALKWAYS



EMPTY TREE GRATES

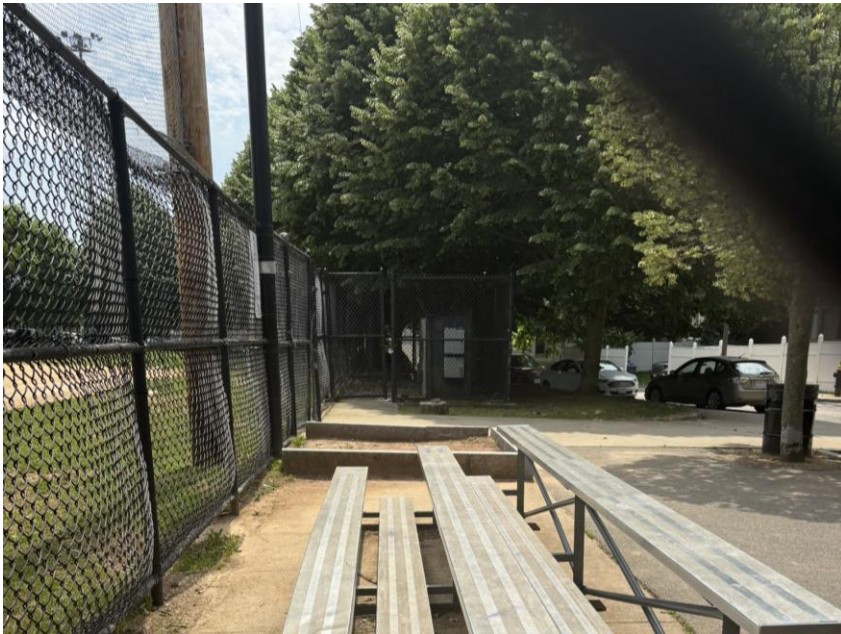
EXISTING PERIMETER CONDITION



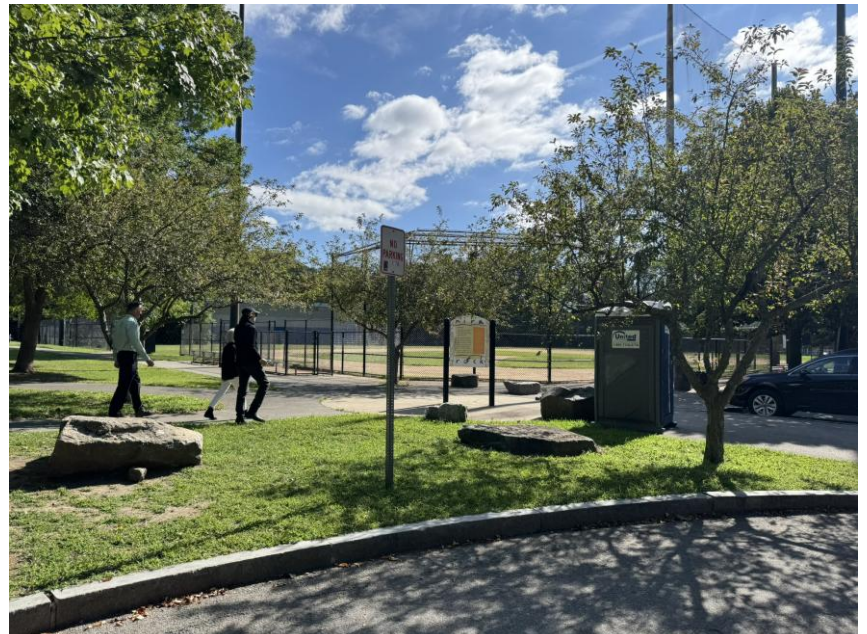
FENCE – IN GOOD CONDITION



CONNECTING WALK FROM HENNIGAN

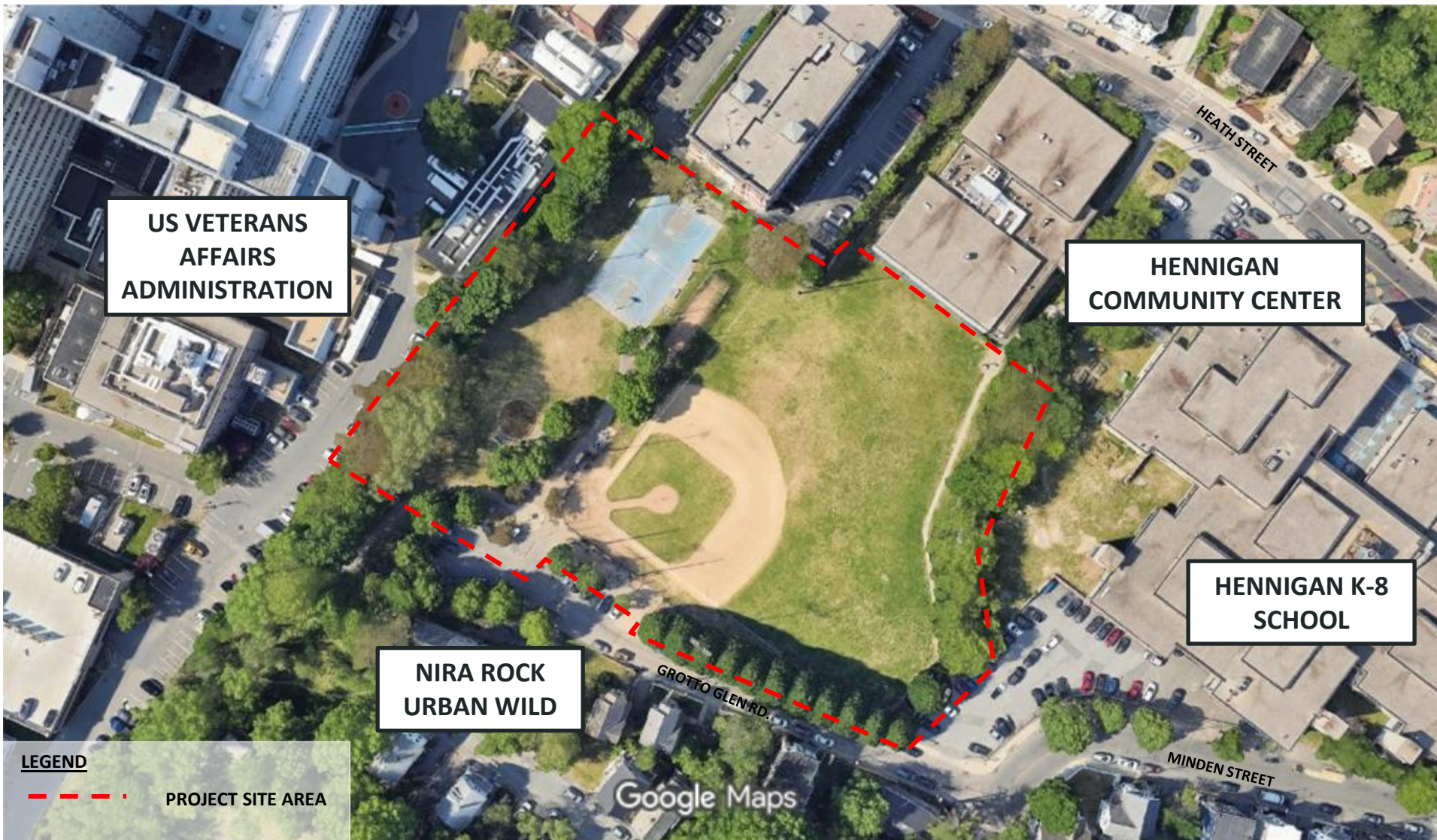


FENCE – FABRIC NEEDING REPAIR



CONNECTION TO NIRA ROCK URBAN WILD

SITE ANALYSIS: EXISTING TREES



US VETERANS
AFFAIRS
ADMINISTRATION

HENNIGAN
COMMUNITY CENTER

HENNIGAN K-8
SCHOOL

NIRA ROCK
URBAN WILD

LEGEND

--- PROJECT SITE AREA

SITE ANALYSIS: EXISTING TREES



STREET TREES ALONG GROTTA GLEN RD.



TREES ALONG WEST PERIMETER



OPEN INTERIOR WITH PERIMETER TREES



OPPORTUNITIES FOR SHADE



LISTENING & DISCUSSION

Help us build great parks.
Let us know what matters to you.

DISCUSSION

- **What makes Jefferson Playground unique?**
- **What do you love about the playground?**
- **Where do you see the need for improvement?**

ENTRY PLAZA

1. What do you like about it?
2. What needs improvement?
3. Seating/ gathering, signage, clear sense of arrival



APPROACH FROM PARKING



SIGNAGE



NEARBY TRASH RECEPTACLES



PORTABLE TOILET

BALLFIELD AND BATTING CAGE

1. What do you like about it?
2. What needs improvement?
3. Quality of turf, seating, programming



EXISTING BALLFIELD



BACKSTOP



BLEACHER SEATING



BATTING CAGE

BASKETBALL COURT

1. What do you like about it?
2. What needs improvement?
3. Quality of court surface, seating, shade, lighting



COURT AND HOOPS



COURT PAVEMENT



COURTSIDE SEATING



LIGHTING

PLAY AREAS BY AGE GROUP

0-2 years old:



2-5 years old:



5-12 years old:



PLAY AREA

1. What do you like about it?
2. What needs improvement?
3. Security fencing, age group for new play equipment, seating



PLAY EQUIPMENT



SEATING



SHADE/ TREES



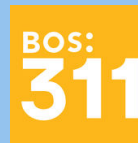
LACK OF ENCLOSURE



THANK YOU!

Next Meeting Winter 2025 location TBD

For questions, maintenance requests or
concerns regarding any of our
parks contact 311



For questions or comments on the project,
please contact Max Sell at max.sell@boston.gov



October 22, 2025
Boston Parks and Recreation

