

A photograph of the Penniman Road Play Area, featuring two colorful play structures with teal slides and purple railings on a dark rubber safety mat. Bare trees and residential buildings are visible in the background under a cloudy sky.

Improvements to **PENNIMAN ROAD PLAY AREA**



MEETING RECORDING



The Boston Parks and Recreation Department will be recording the meeting and posting to our project webpage for those who are unable to attend the Zoom meeting live.

It is possible that participants may also be recording the meeting with their phones cameras or other devices. If you do not wish to be recorded during this meeting, please keep your microphone muted and camera off.

Please share with your neighbors and friends:

<https://www.boston.gov/calendar/penniman-road-play-area>

VIRTUAL MEETING ETIQUETTE

We want to ensure this conversation is a pleasant experience for all and that all community members/stakeholders are comfortable sharing their comments, questions and feedback.

Please be respectful and mindful of each other's time when asking questions/ providing comments, so that all attendees are able to participate in the meeting.

Keep questions/ comments project-specific and not personal to yield solution-driven discussion.

Please wait until all attendees have had the opportunity to ask a question/ provide a comment before providing additional questions/ comments.

*You can always set up a conversation with **Max Sell, max.sell@Boston.gov**, to further discuss the project or process.*

ZOOM TIPS

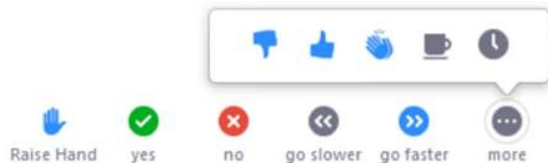
Here is how you can participate during the question and answer part of the presentation.

DURING THE PRESENTATION:



VIA WEB:

Turn video on / off.



To use these non-verbal options click on participants (bottom of screen); these options will pop up in side bar.

DURING THE Q&A:



JOINING VIA PHONE?

Use *9 to raise hand to ask for audio / video permission to ask questions or provide comments.



VIA WEB:

Chat to ask questions / comments or provide responses to poll questions



Raise hand to ask for audio / video permission to ask questions or provide comments.

AGENDA

1

PROJECT TEAM INTRODUCTION

2

PROJECT OVERVIEW

3

PRESENTATION

4

LISTENING & DISCUSSION

5

CLOSING REMARKS & NEXT STEPS

PROJECT TEAM

Max Sell

Project Manager

max.sell@Boston.gov or 617-961-3097

Jennifer Roberts

Allston-Brighton Liaison, Office of Neighborhood Services

Jennifer.roberts@Boston.gov or 617-635-4517

My'Kel McMillen

Outreach Coordinator, External Affairs

corey.mcmillen@Boston.gov or 617-201-1294

Kaki Martin, Principal

Jennifer Ng, Senior Associate

Melita Schmeckpeper, Designer

Hannah Hardenbergh, Designer

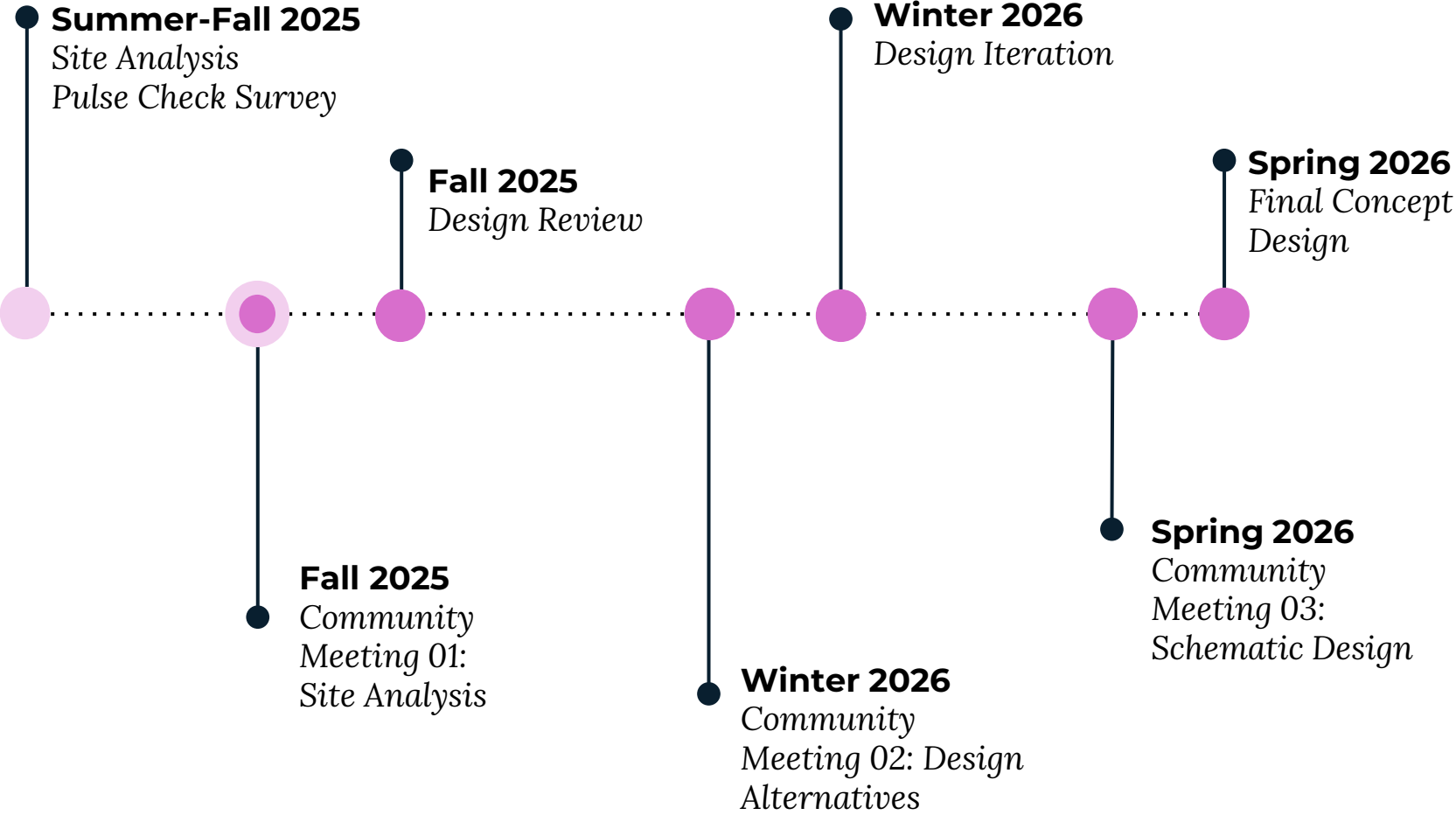
Klopfer Martin Design Group



PROJECT OVERVIEW

A blue-tinted photograph of a park. In the foreground, a black chain-link fence runs across the frame. Behind the fence is a playground with colorful equipment (swings, slides, and climbing structures). To the right of the fence, there are several wooden benches under the shade of large, leafy trees. In the background, a multi-story building and a street with parked cars are visible.

PROJECT SCHEDULE



CITY OF BOSTON PRIORITIES

A city that is:

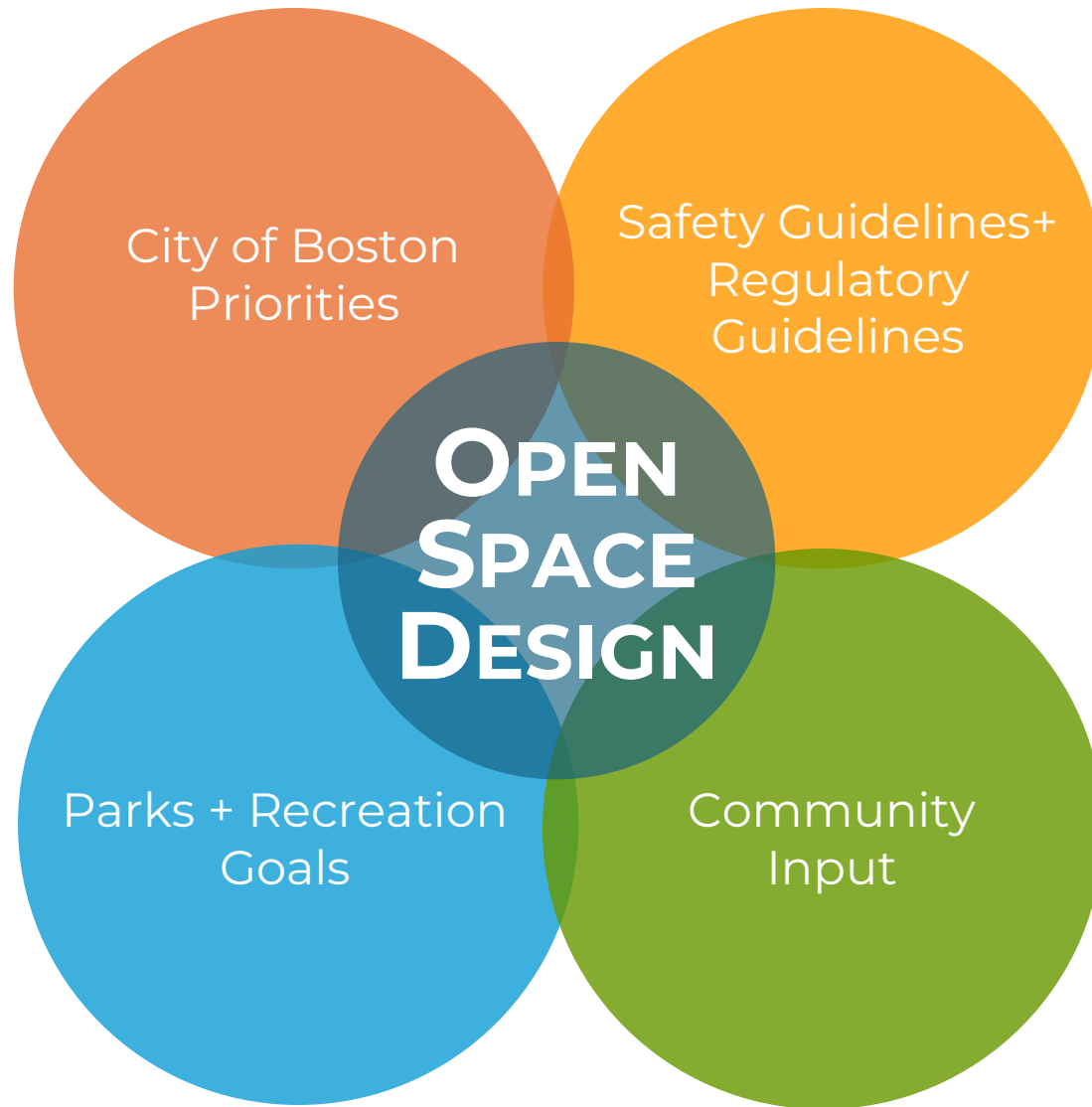
- **Delivering Exceptional Constituent Services**
- **Green and Growing**
- **Family Friendly**
- **Closing the Racial Wealth Gap**
- **Healthy and Safe**



PARK & RECREATION GOALS

- Accessible and available to all
- Diverse, balanced, and efficient mix of uses
- Meaningful and inclusive community engagement
- Adaptive and resilient landscapes
- Promote connections





PENNIMAN ROAD CONTEXT

PARKS & OPEN SPACES

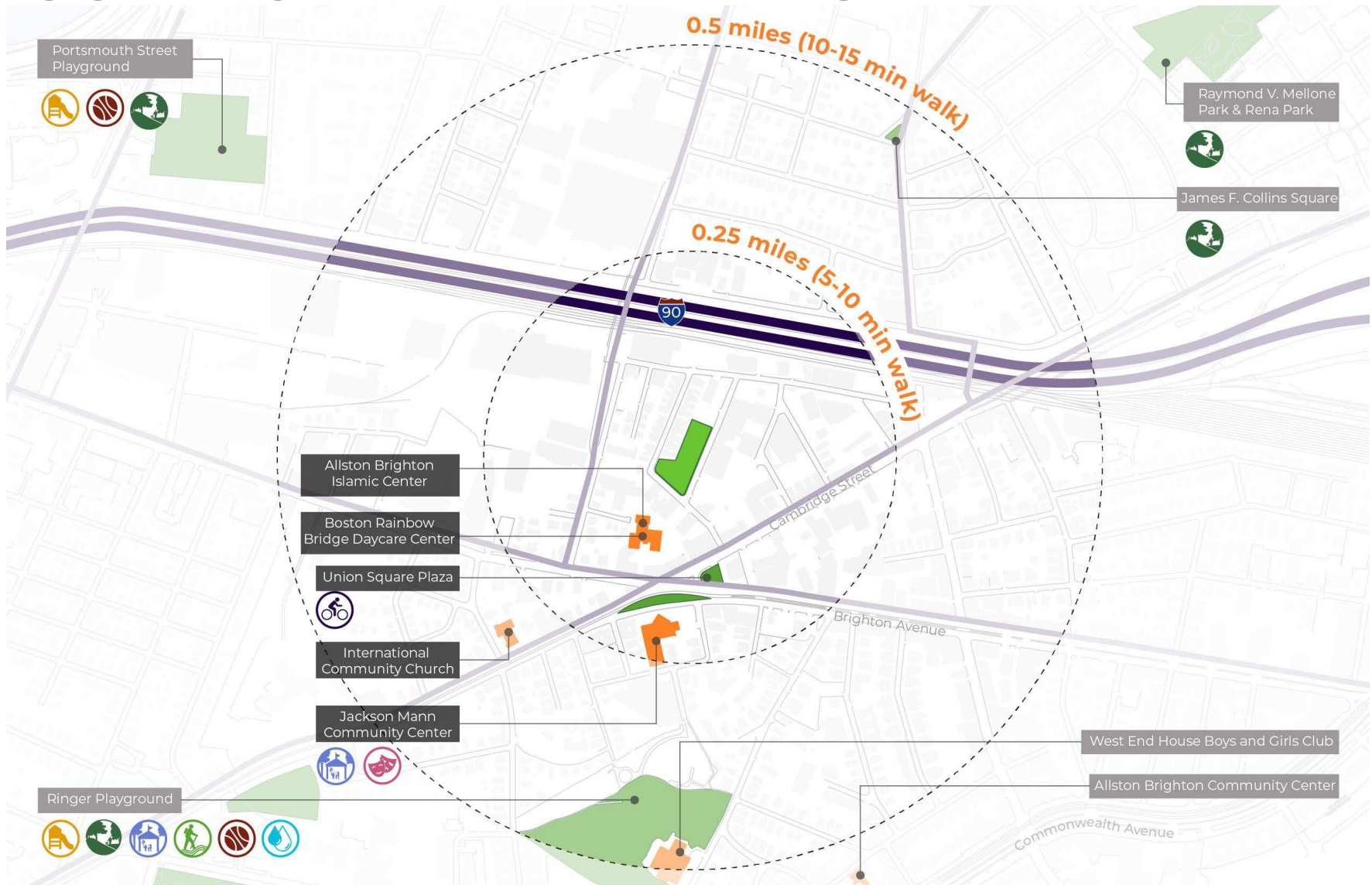


LEGEND

- Open Space
- I-90
- Commuter Rail
- Main Pedestrian Crossings



COMMUNITY AMENITIES

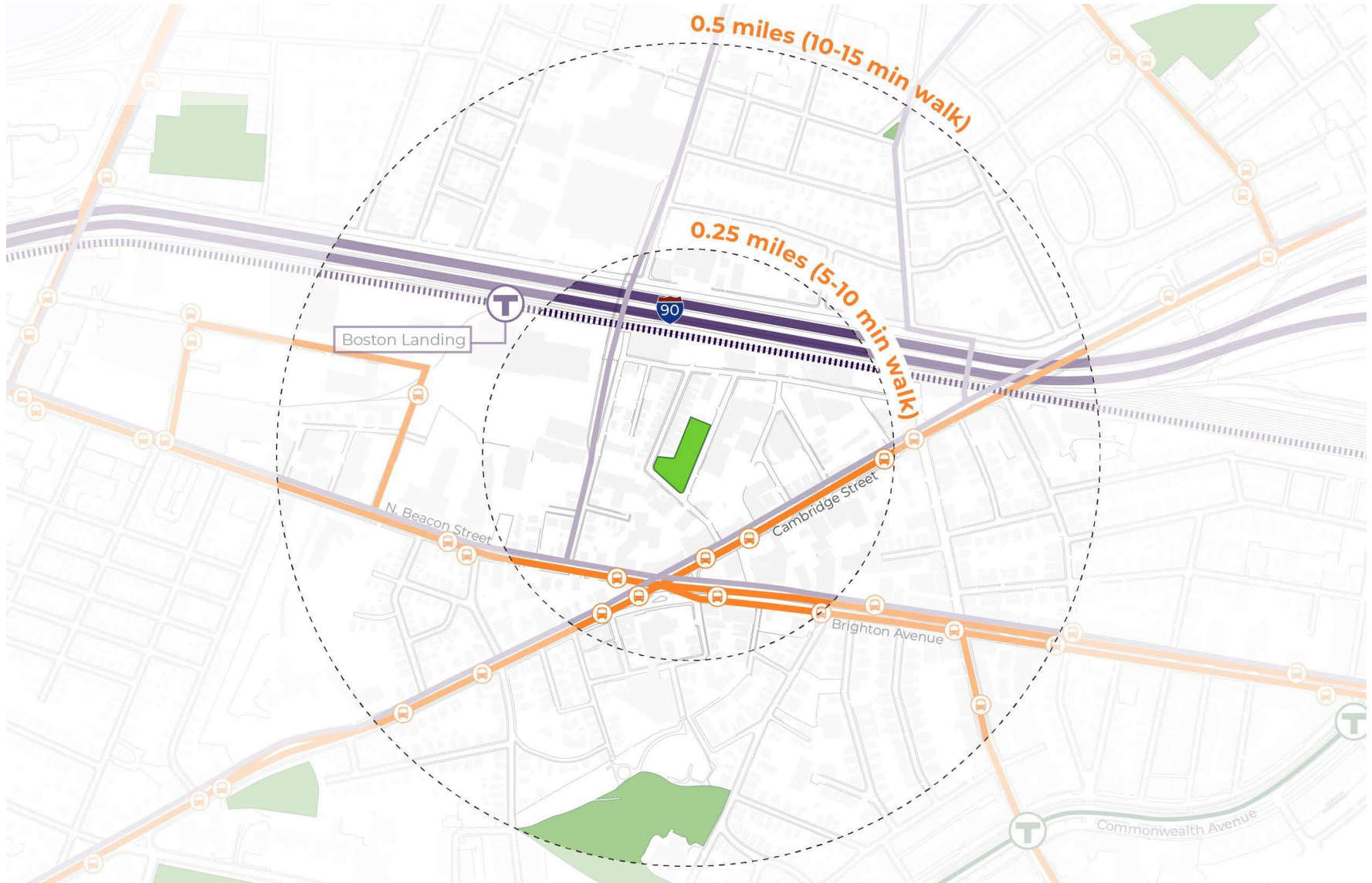


LEGEND

- Spray Play
- Playground
- Lawn
- Theater
- Bike Share
- Sports Courts
- Pavilion



TRANSIT



LEGEND



Open Space



Commuter Rail



Main Pedestrian Crossings



Main Transit Routes



Green Line

Bus Stops



NORTH

SITE ANALYSIS



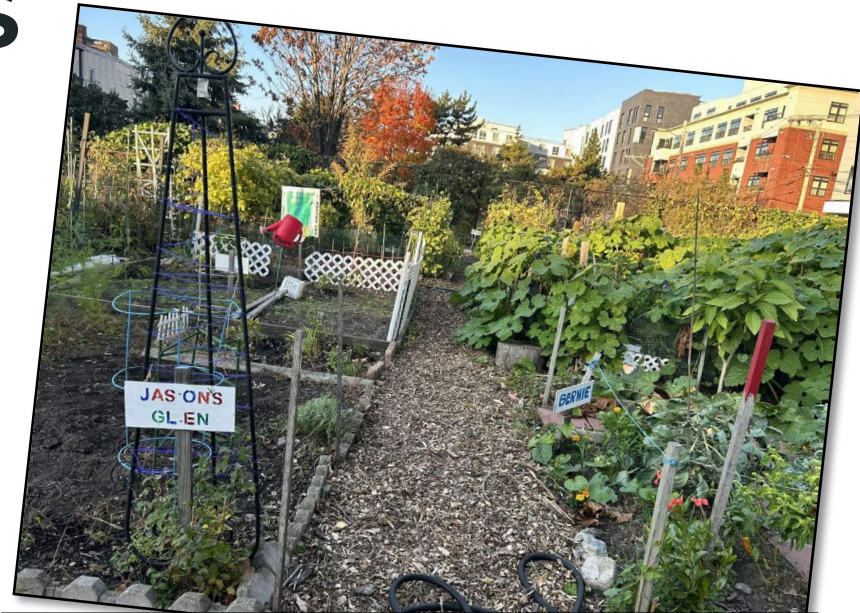
A TIMELINE OF CHANGES

- **1945** Site fencing documented
- **1973** Full park is redesigned
- **1988** Playground scheme is updated
- **1991** Basketball court resurfaced
- **2004** Playground materials & grading are updated

COMMUNITY EVENTS



Local alliances host block parties and help fundraise



Annual Spring Clean-Up Events,
BRB Child Care, Boston Rainbow
Bridge Child-care Center



Community Garden Parties

PROGRAMS



LEGEND



Lawn & Passive

Garden



Basketball Court

Playground

NORTH



FENCING



- Four park 'rooms' are heavily restricted by excessive fencing and bollards
- Inconsistent fence types

LEGEND



4' Metal Rail Fence



4' Chain Link Fence



6' Chain Link Fence



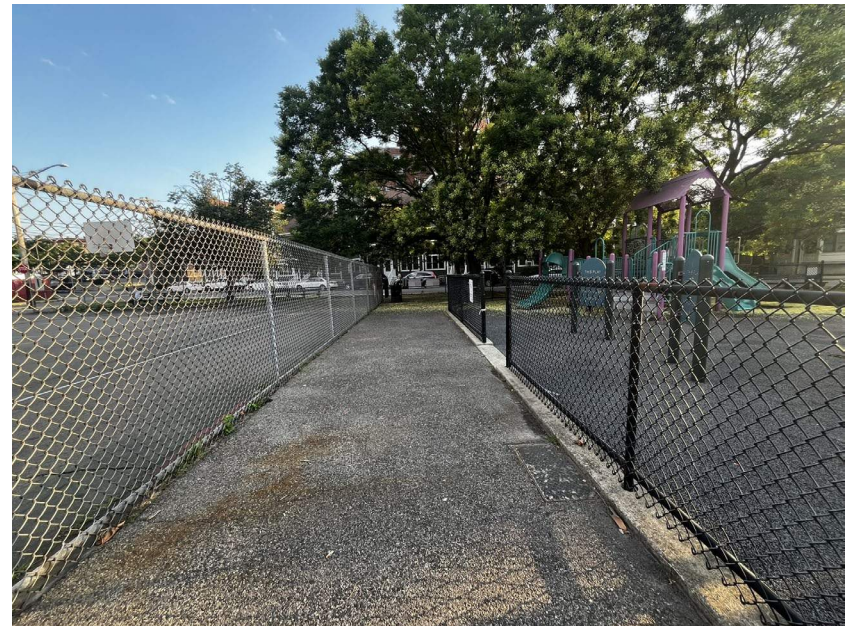
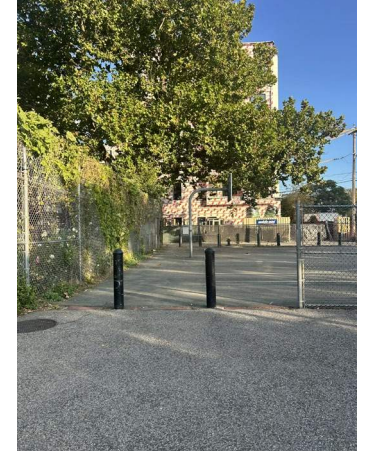
10' Chain Link Fence



Bollard



CIRCULATION



- Unwelcoming entrances
- To access each room, visitors must leave the park and use the street sidewalk
- Make “hallways” more negotiable

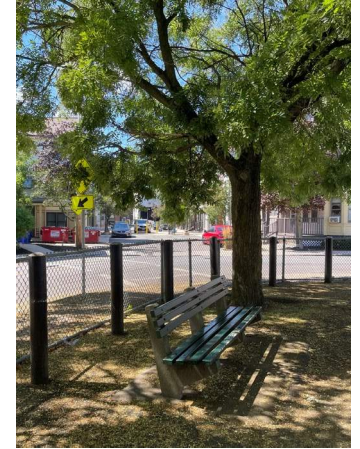
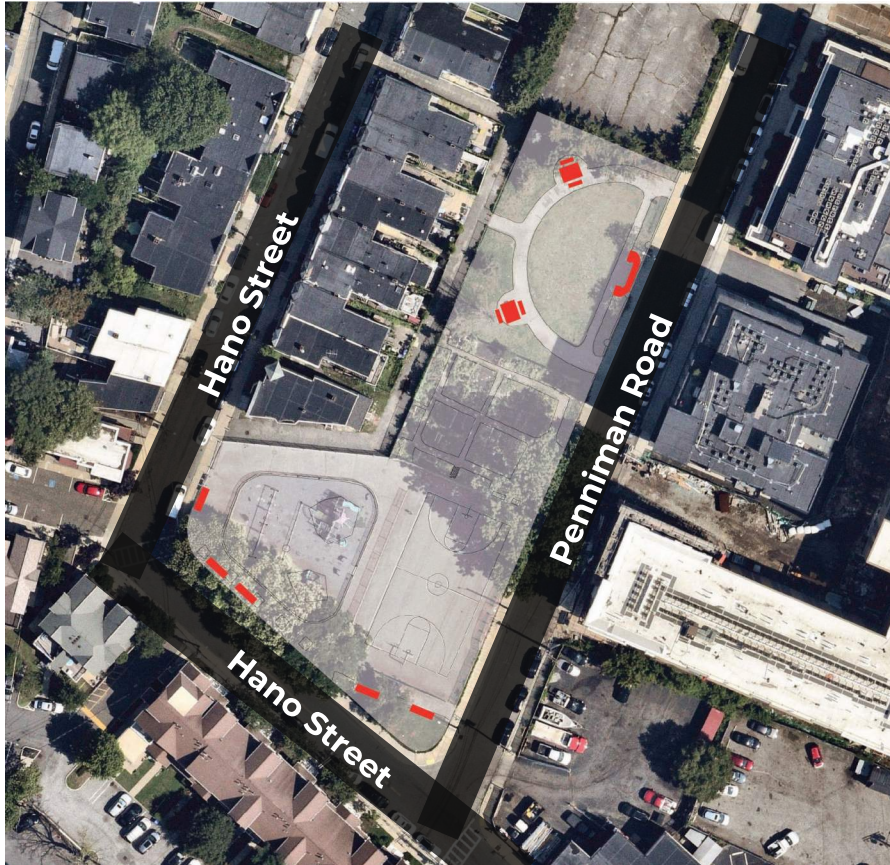
LEGEND

- Interior Park Pathways
- Exterior Sidewalk Connector

- Formal Entrance
- Vehicular

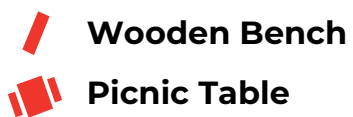


SEATING

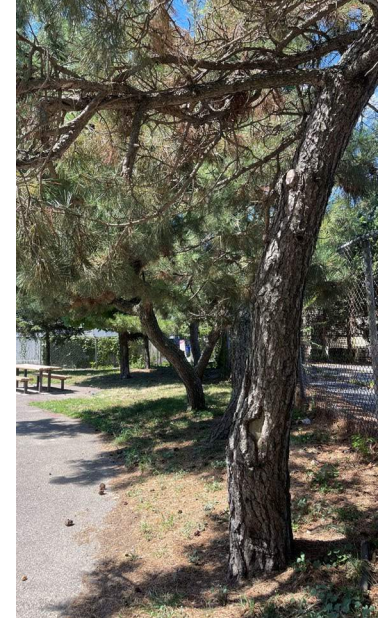
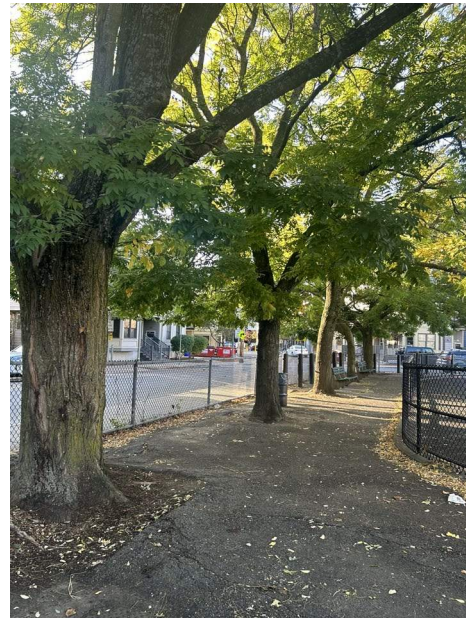
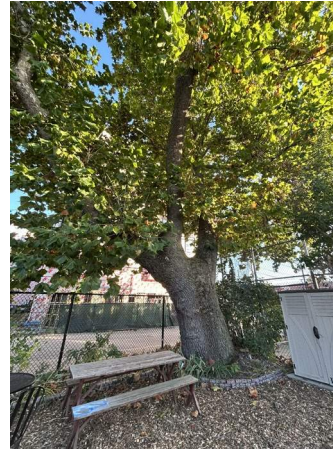


- Limited options for seating
- Seating located between fencing and programs

LEGEND



EXISTING TREES



- Robust canopy offers plenty of shade near playground
- 48" caliber London Plane tree grounds the community garden & basketball court

LEGEND



Existing Canopy



Lawn



A blue-tinted photograph of a chain-link fence with dahlias growing in front of it. The text "COMMUNITY PULSE" is overlaid in white, bold, sans-serif font.

COMMUNITY PULSE

WE ASKED YOUR NEIGHBORS:

1. What does Penniman Park need?
2. What do you enjoy most about the park?
3. How should we share updates?

WE RECEIVED 35+ RESPONSES

"I love how [the park] **brought me and all my neighbors together**, and it's honestly where I met my closest friends to this day."

"The park needs more **shady areas, seating, and green space.**"

WHAT WE HEARD:

"I would love to have a **more functional** park space that creates a peaceful, tranquil space for all to enjoy."

"**Day Care** uses the park daily. The basketball court and community gardens are very active and provide a **great energy and spirit** in the park area."

"I'd love to see improvements to the basketball court. It's the most used feature and **people from all age groups enjoy it** (ideally making it an enclosed space)."

"More bike racks, **less cement.**"

"Total renovation with **updated play structures** for toddler and older kids."

GETTING A PULSE:

THE LAWN

1. How do you use the open lawn?
2. What do you value most about the open lawn?
3. What is your wish for the open lawn?



GETTING A PULSE:

THE GARDEN

1. How often do you visit the garden?
2. What do you value most about the garden?
3. What is your wish for the garden?



GETTING A PULSE:

THE PLAYGROUND

1. How often do you visit the playground?
2. What do you value most about the playground?
3. What is your wish for the playground?



GETTING A PULSE:

THE COURT

1. How often do you visit the basketball court?
2. What do you value most about the basketball court?
3. What is your wish for the basketball court?



TAKE THE COMMUNITY MEETING 1 SURVEY:





Next Meeting – Winter 2025-26

For questions, maintenance requests or concerns regarding any of our parks contact 311



To learn more, visit the project website:

<https://www.boston.gov/departments/parks-and-recreation/project/penniman-road-play-area-improvements>

For questions or comments about this project,
contact Max Sell

[**max.sell@Boston.gov**](mailto:max.sell@Boston.gov)

September 30, 2025

Boston Parks and Recreation

