

Designing the future of

RONAN PARK

FINAL COMMUNITY MEETING

The meeting will begin shortly...



October 7, 2025
Boston Parks and Recreation



MEETING RECORDING



The Boston Parks and Recreation Department will be recording the meeting and posting to our project webpage for those who are unable to attend the Zoom meeting live.

It is possible that participants may also be recording the meeting with their phones cameras or other devices. If you do not wish to be recorded during this meeting, please keep your microphone muted and camera off.

*Please share with your neighbors and friends,
www.boston.gov/ronan-park*

VIRTUAL MEETING ETIQUETTE

We want to ensure this conversation is a pleasant experience for all and that all community members/stakeholders are comfortable sharing their comments, questions and feedback.

Please be respectful and mindful of each other's time when asking questions/ providing comments, so that all attendees are able to participate in the meeting.

Keep questions/ comments project-specific and not personal to yield solution-driven discussion.

Please wait until all attendees have had the opportunity to ask a question/ provide a comment before providing additional questions/ comments.

*You can always set up a conversation with **Kezia Ofiesh**, kezia.ofiesh@boston.gov, to further discuss the project or process.*

ZOOM TIPS

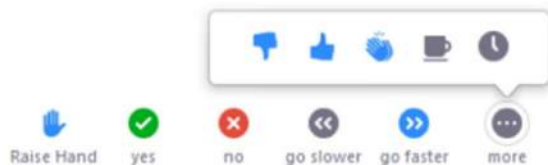
Here is how you can participate during the question and answer part of the presentation.

DURING THE PRESENTATION:



VIA WEB:

Turn video on / off.



To use these non-verbal options click on participants (bottom of screen); these options will pop up in side bar.

DURING THE Q&A:



JOINING VIA PHONE?

Use *9 to raise hand to ask for audio / video permission to ask questions or provide comments.



VIA WEB:

Chat to ask questions / comments or provide responses to poll questions



Raise hand to ask for audio / video permission to ask questions or provide comments.

AGENDA

1

PROJECT OVERVIEW

2

WHAT WE HEARD - COMMUNITY MEETINGS, SURVEY, POP-UP

3

PROJECT GOALS

4

FINAL CONCEPT DESIGN PLAN

5

LISTENING & DISCUSSION

6

CLOSING REMARKS & NEXT STEPS

PROJECT OVERVIEW



PROJECT TEAM

Kezia Ofiesh

PROJECT MANAGER, BRPD

kezia.ofiesh@boston.gov or 617-961-3059

Cathy Baker-Eclipse

INTERIM COMMISSIONER, BRPD

cathy.baker-eclipse@boston.gov

My'Kel McMillen

COMMUNITY OUTREACH COORDINATOR, BRPD

corey.mcmillen@boston.gov

Anthony Nguyen

MID-DORCHESTER LIAISON, OFFICE OF NEIGHBORHOOD SERVICES

anthony.nguyen@boston.gov

Kaki Martin, PRINCIPAL

Jennifer Ng, SENIOR ASSOCIATE

Melita Schmeckpeper, LANDSCAPE ARCHITECT

Dora Mugerwa, DESIGNER

KLOPFER MARTIN DESIGN GROUP





CITY OF BOSTON PRIORITIES

A city that is:

- **Delivering Exceptional Constituent Services**
- **Green and Growing**
- **Family Friendly**
- **Closing the Racial Wealth Gap**
- **Healthy and Safe**

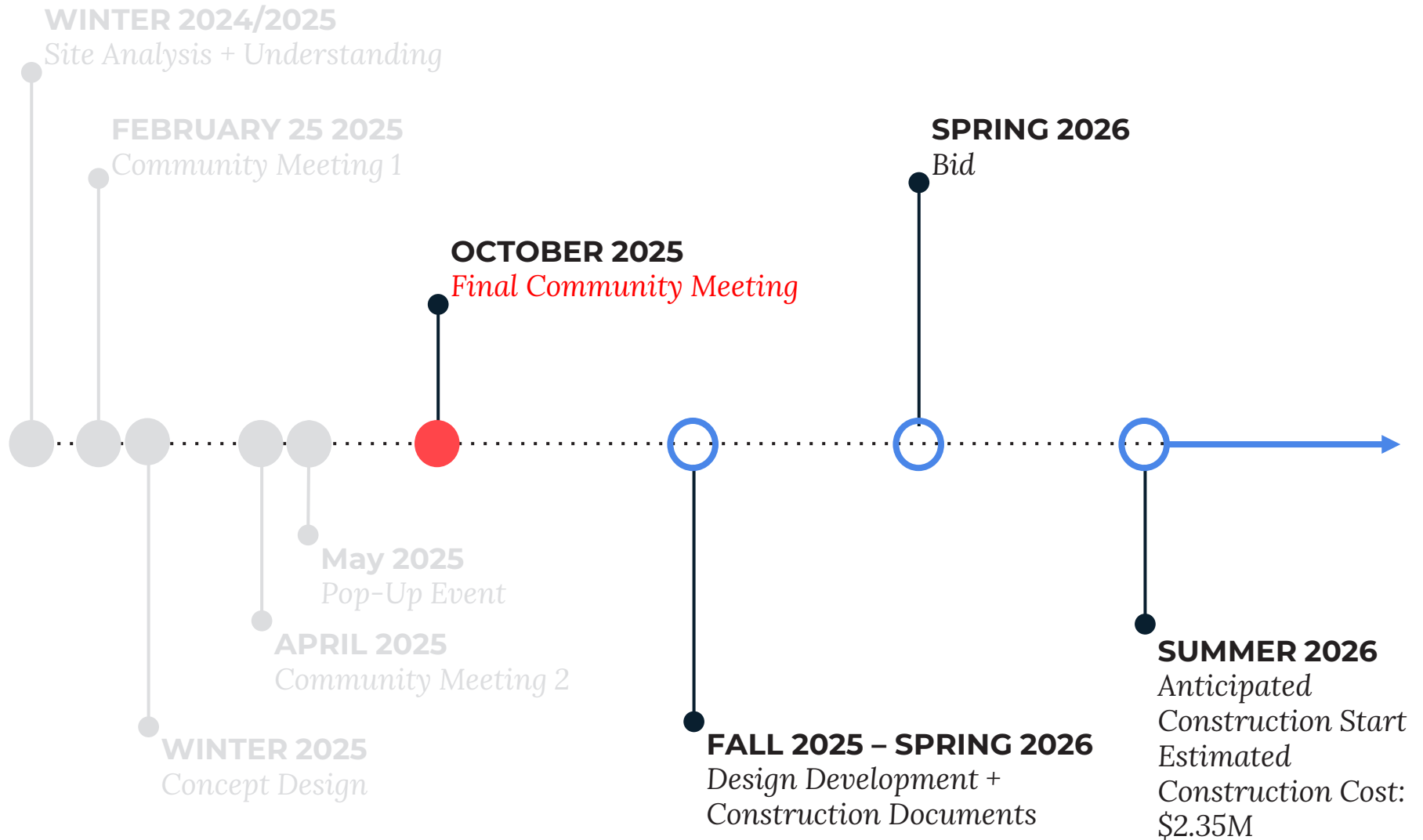


PARK & RECREATION GOALS

- Accessible and available to all
- Diverse, balanced, and efficient mix of uses
- Meaningful and inclusive community engagement
- Adaptive and resilient landscapes
- Promote connections



PROJECT SCHEDULE & FUNDING



PROJECT EXTENT



Adams Street

Linden Street

Juliette Street

Percival Street

UPPER
PARK

LOWER
PARK

Marie Street

Mount Ida Road

Homes Avenue

Mount Ida Road

Bentham Road



EXISTING PARK FEATURES AND USES



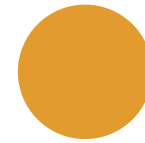
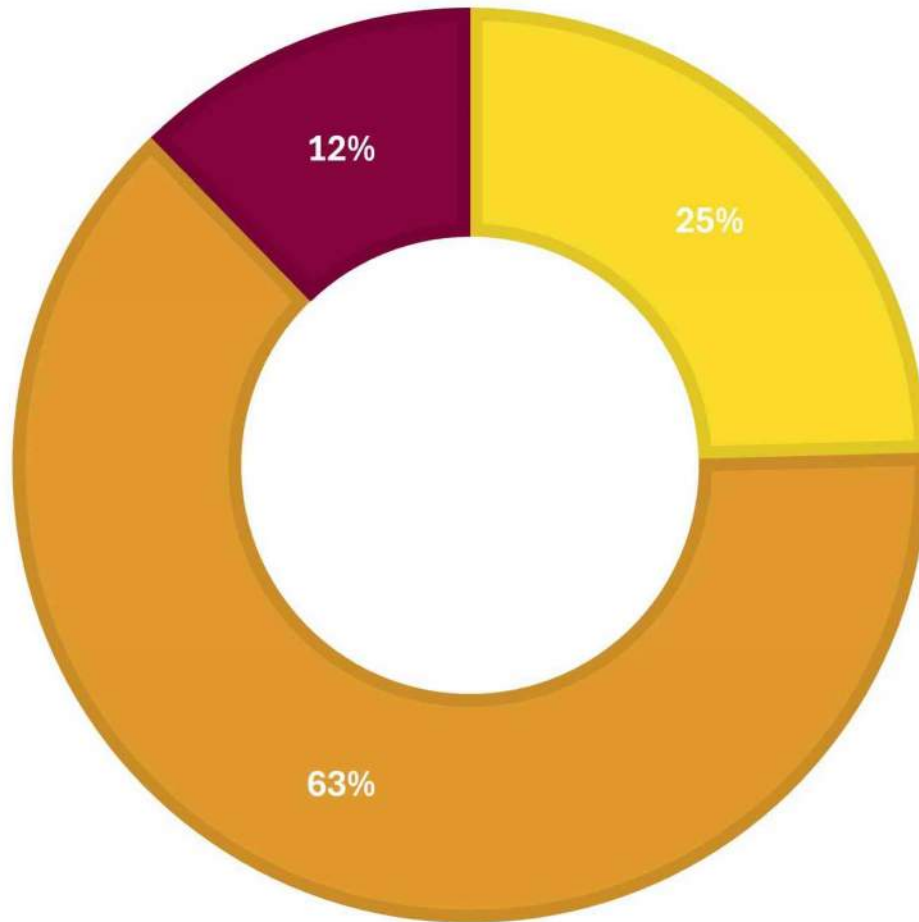
WHAT WE HEARD

COMMUNITY MEETINGS, SURVEY, POP UP



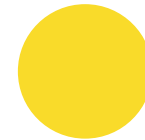
WHAT WE HEARD | MEETING 1

What is your favorite thing to do in Ronan Park?



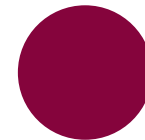
Gather, Trees + Plants

- Enjoy the view
- Observe nature
- The big trees
- Meeting neighbors



Play + Recreation

- Play basketball
- Playing in splash pad
- Walking and Dog walking
- Exercise classes

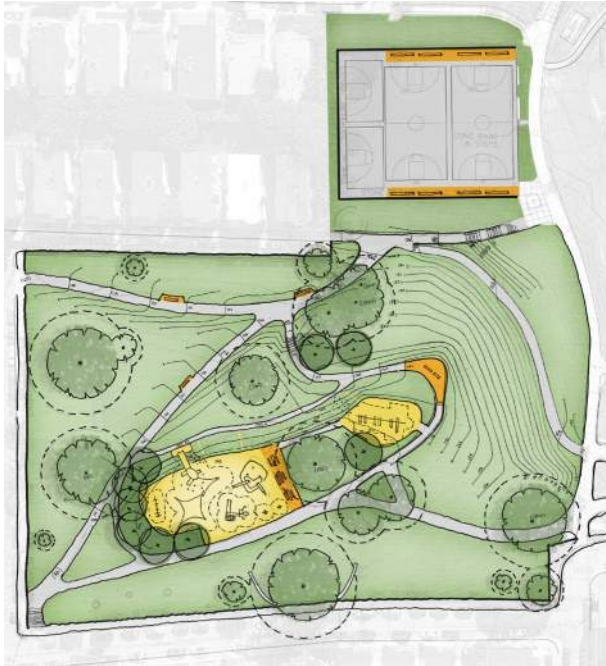


Programming

- Summer activities
- Markets
- Festivals
- Live music

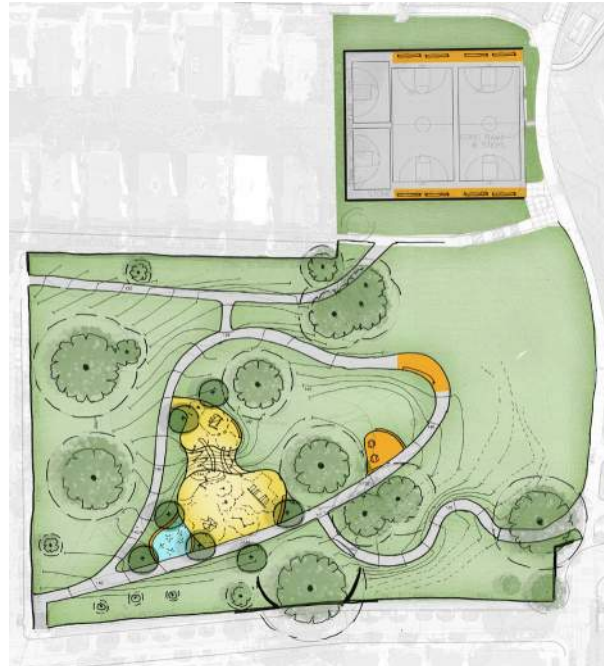
WHAT WE HEARD | MEETING 2

What you liked



THE PROW

- Expanded overlook and seating.
- Opportunities to gather and picnic within the play area.
- Swings facing the view of the water.



LOOP

- Overlook seating.
- Play is at two levels with a play slope.
- Dedicated picnic area.

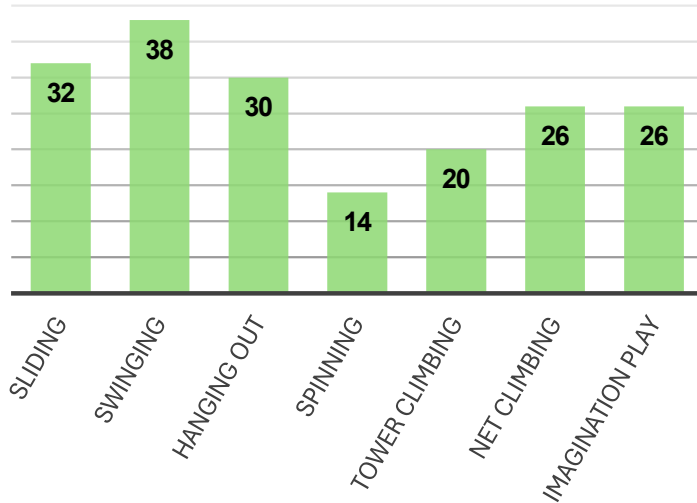


MEANDER

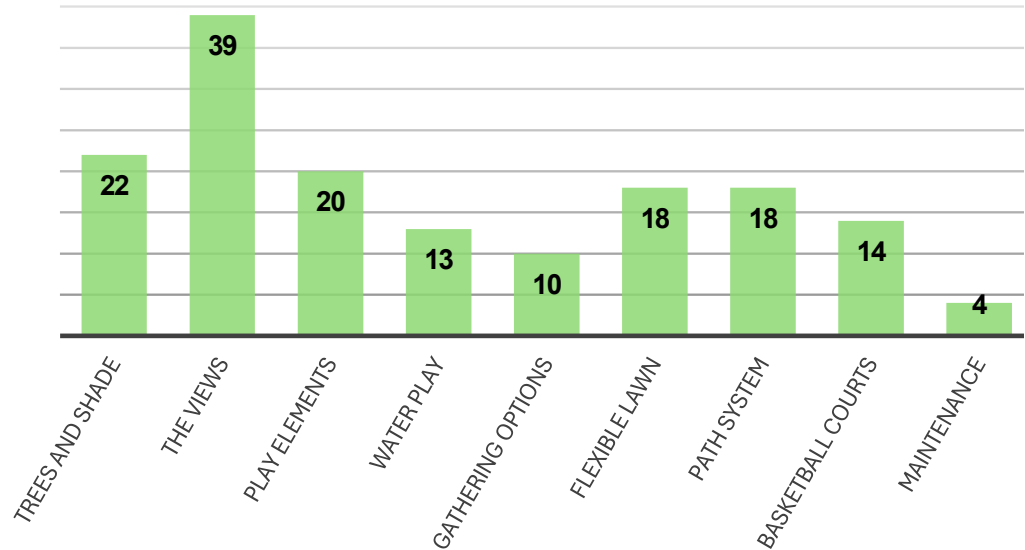
- Gathering spread to five locations.
- Secondary overlook with seating.
- Play spread to three locations.

WHAT WE HEARD | SURVEY

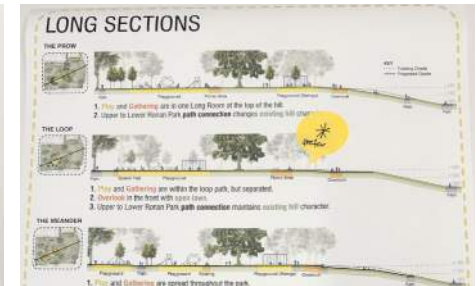
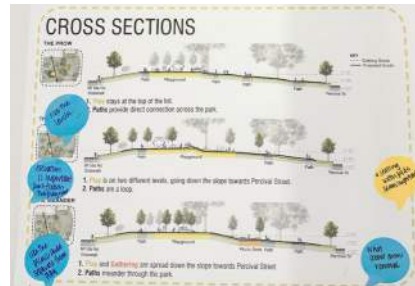
What type of play do you like?



What park program or element is most important to you?



WHAT WE HEARD | POP-UP



PROJECT GOALS

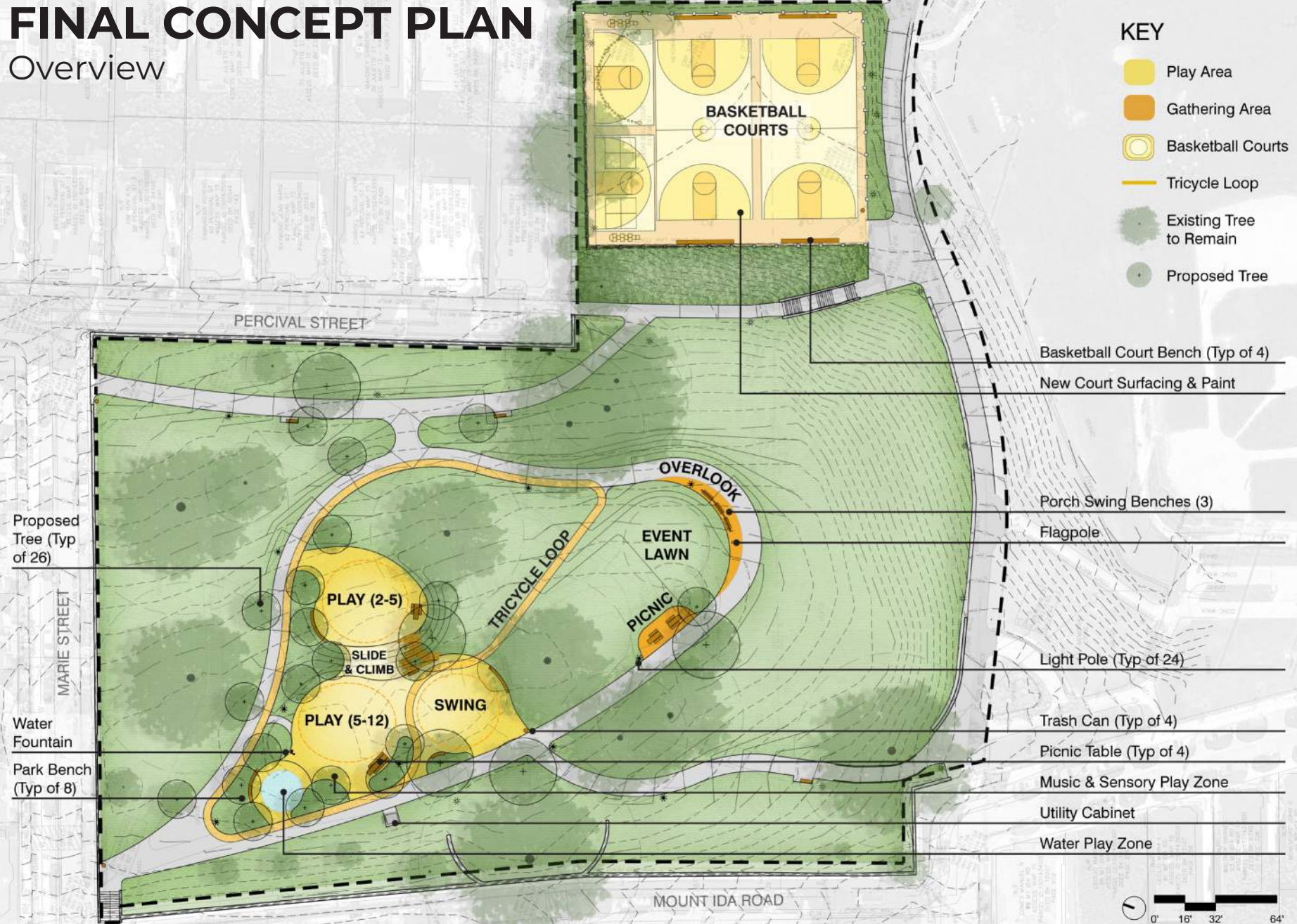
1. **Improve the connections** between Upper and Lower Ronan Park.
2. Celebrate the **views** in the park's design.
3. Maximize opportunities for **play, gathering, and walking**.
4. Improve **basketball courts** and add benches for viewing.
5. Maintain and protect **existing healthy trees** and design for the **next generation of tree canopy**.
6. Address **drainage issues** at lower path.
7. Provide **park essentials** to improve maintenance and overall park experience.

FINAL CONCEPT DESIGN PLAN



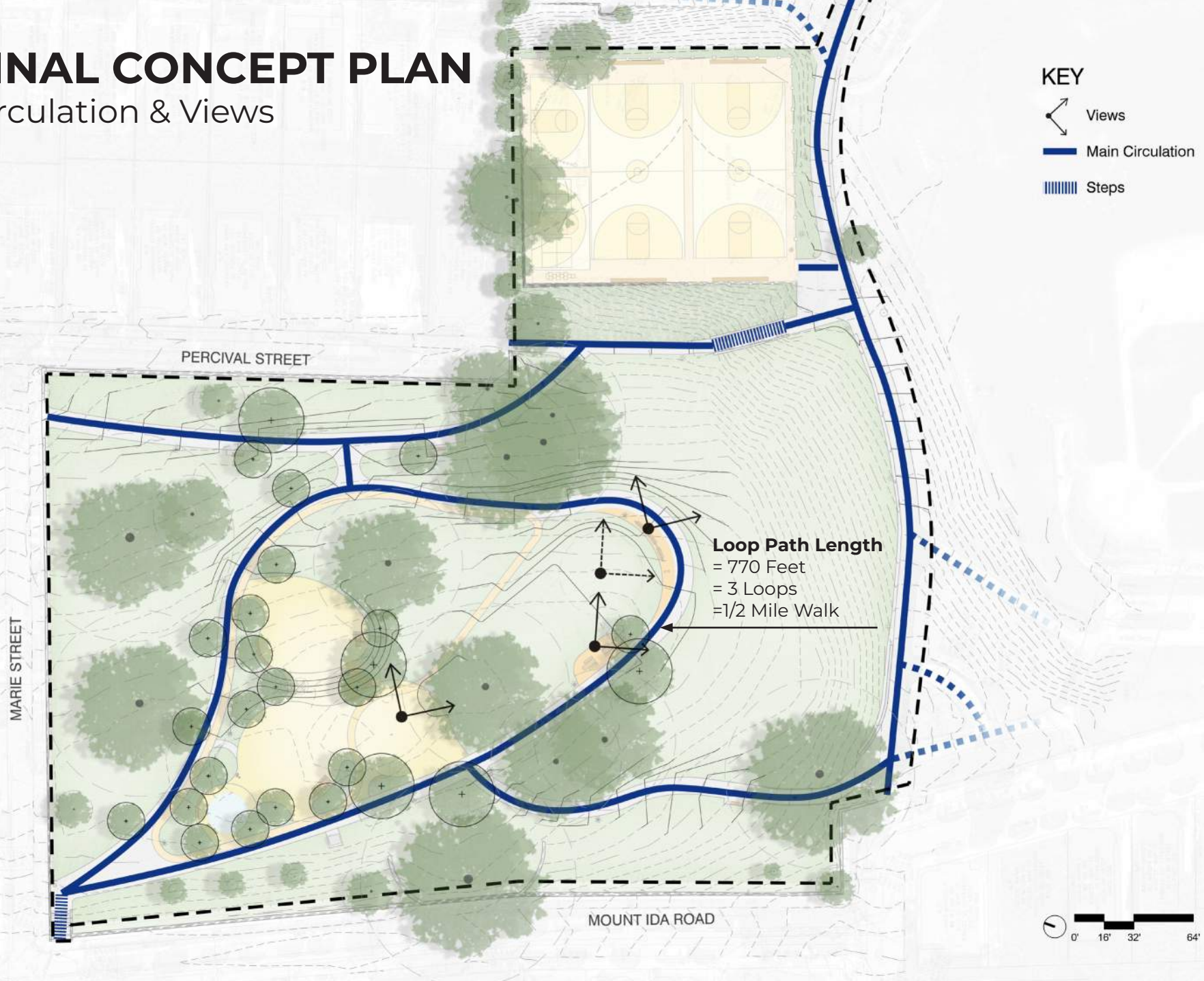
FINAL CONCEPT PLAN

Overview



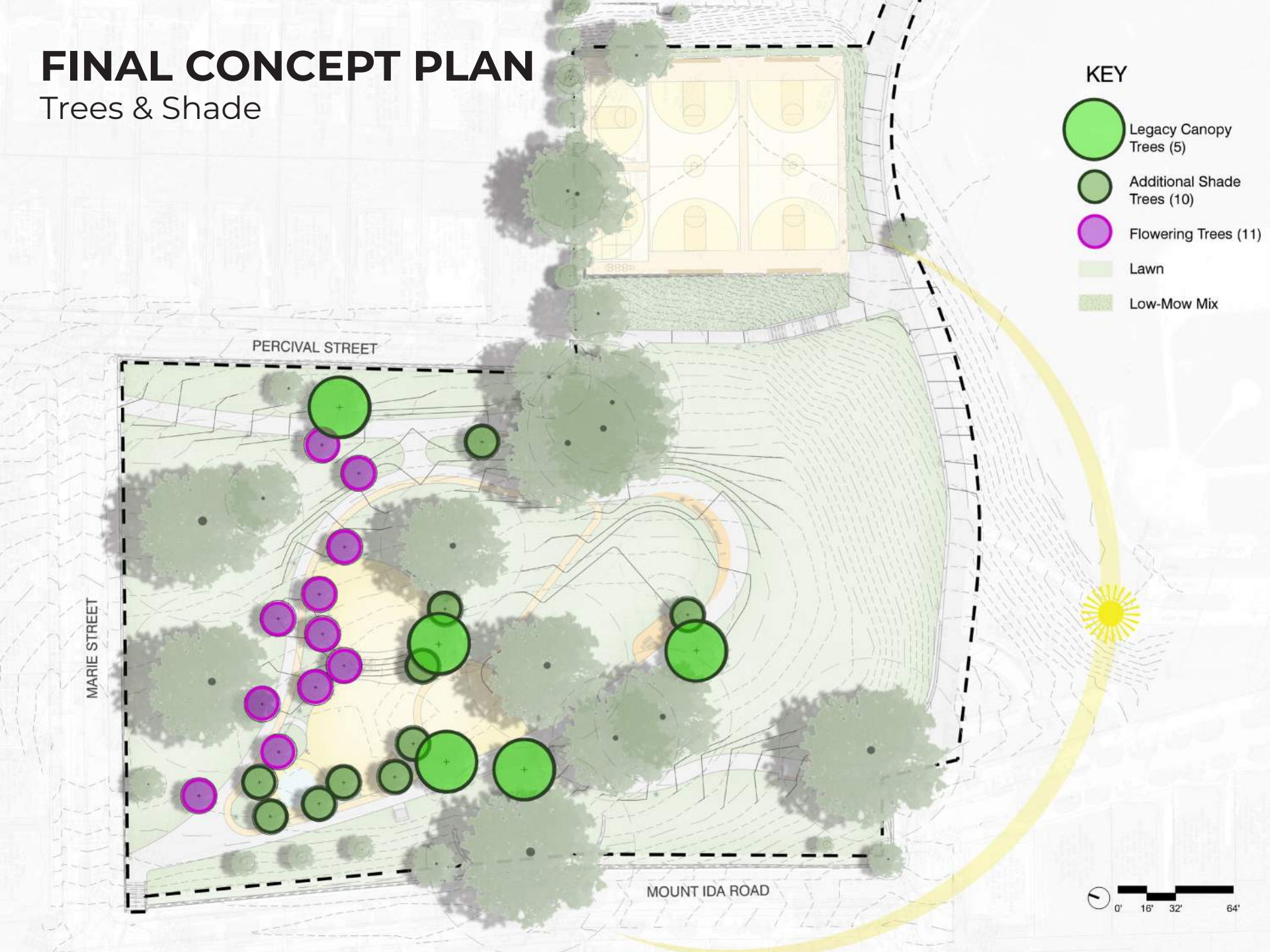
FINAL CONCEPT PLAN

Circulation & Views



FINAL CONCEPT PLAN

Trees & Shade



TREE PLANTING

Example Species

*Note: All species shown (except *Malus* 'Donald Wyman') are native to Eastern US.

Legacy Canopy Trees



Pin Oak
(*Quercus palustris*)



Shade Trees



Kentucky Coffeetree
(*Gymnocladus dioica* 'Espresso')



Flowering Trees



Crabapple
(*Malus* 'Donald Wyman')



American Elm
(*Ulmus americana* 'Valley Forge')



Sweetgum
(*Liquidambar styraciflua*)

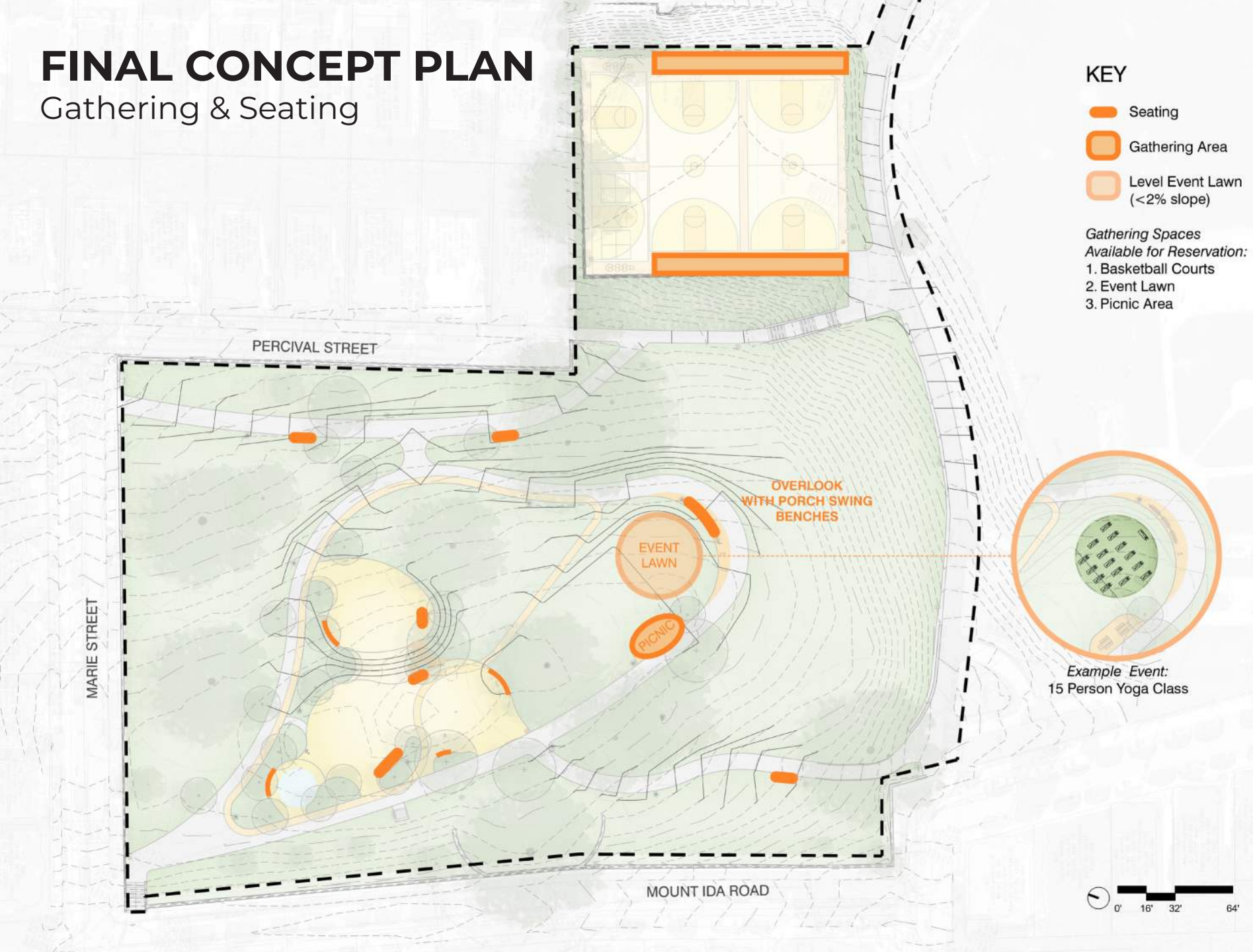


Serviceberry
(*Amelanchier* sp.)



FINAL CONCEPT PLAN

Gathering & Seating



GATHERING & SEATING



Benches



Porch Swing Benches



Basketball Court Seating



Picnic Tables

GATHERING DISCUSSION



Family Picnic Tables

OR



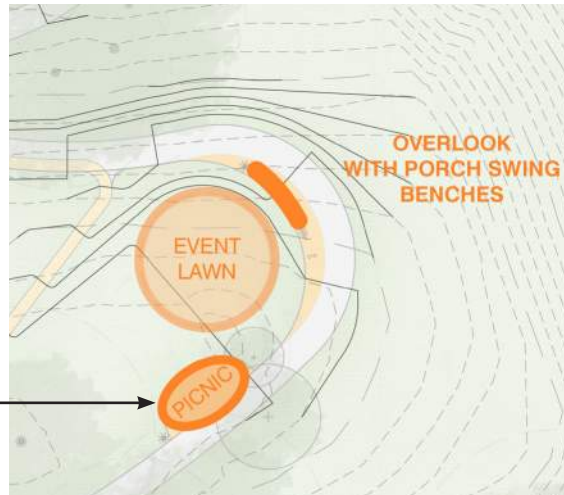
Game Tables

OR



Tables and Chairs

Gathering Space

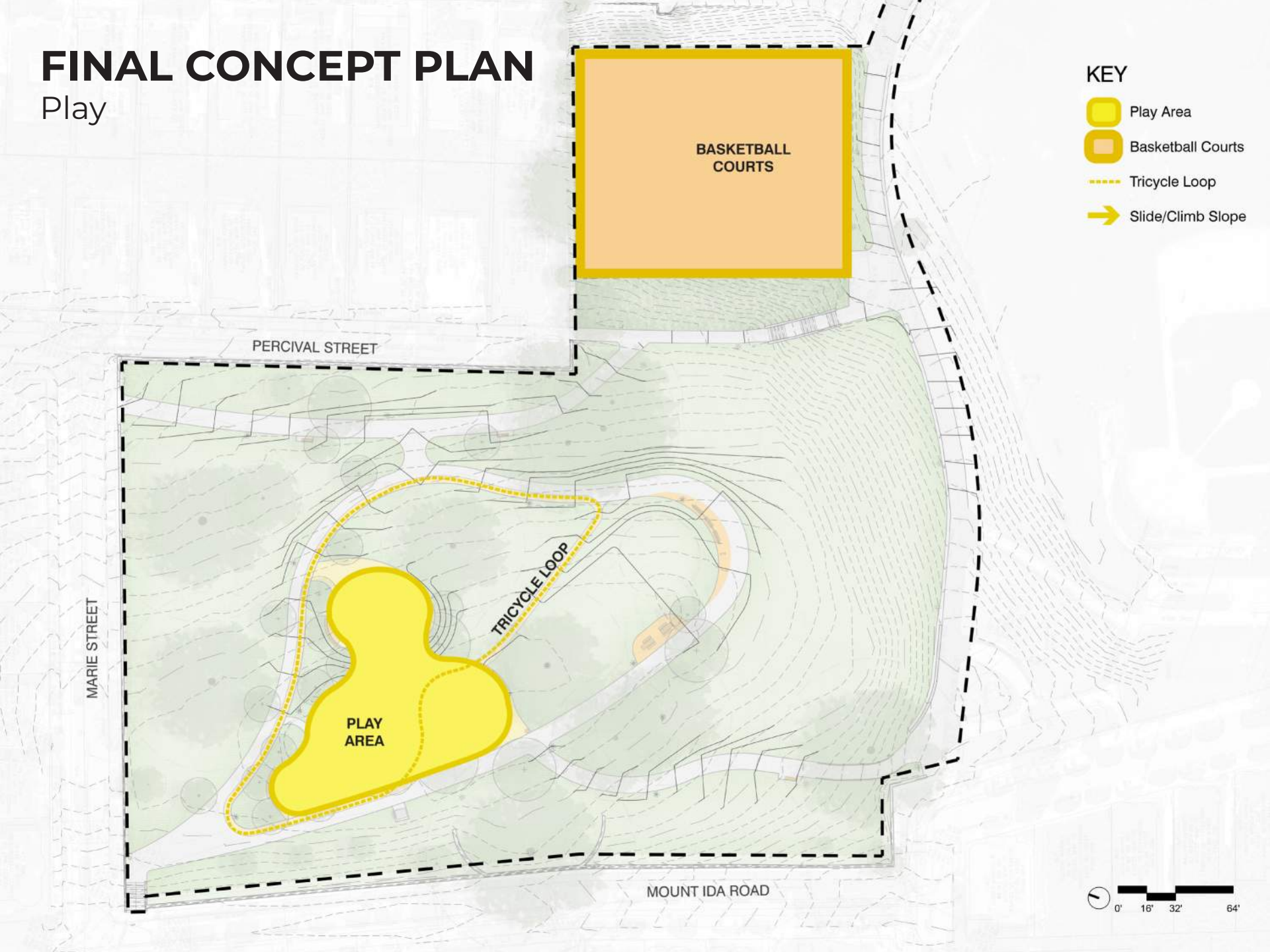


FINAL CONCEPT PLAN

Play

KEY

-  Play Area
-  Basketball Courts
-  Tricycle Loop
-  Slide/Climb Slope



BASKETBALL COURTS



Proposed Mural by Artists For Humanity



Basketball Courts Layout



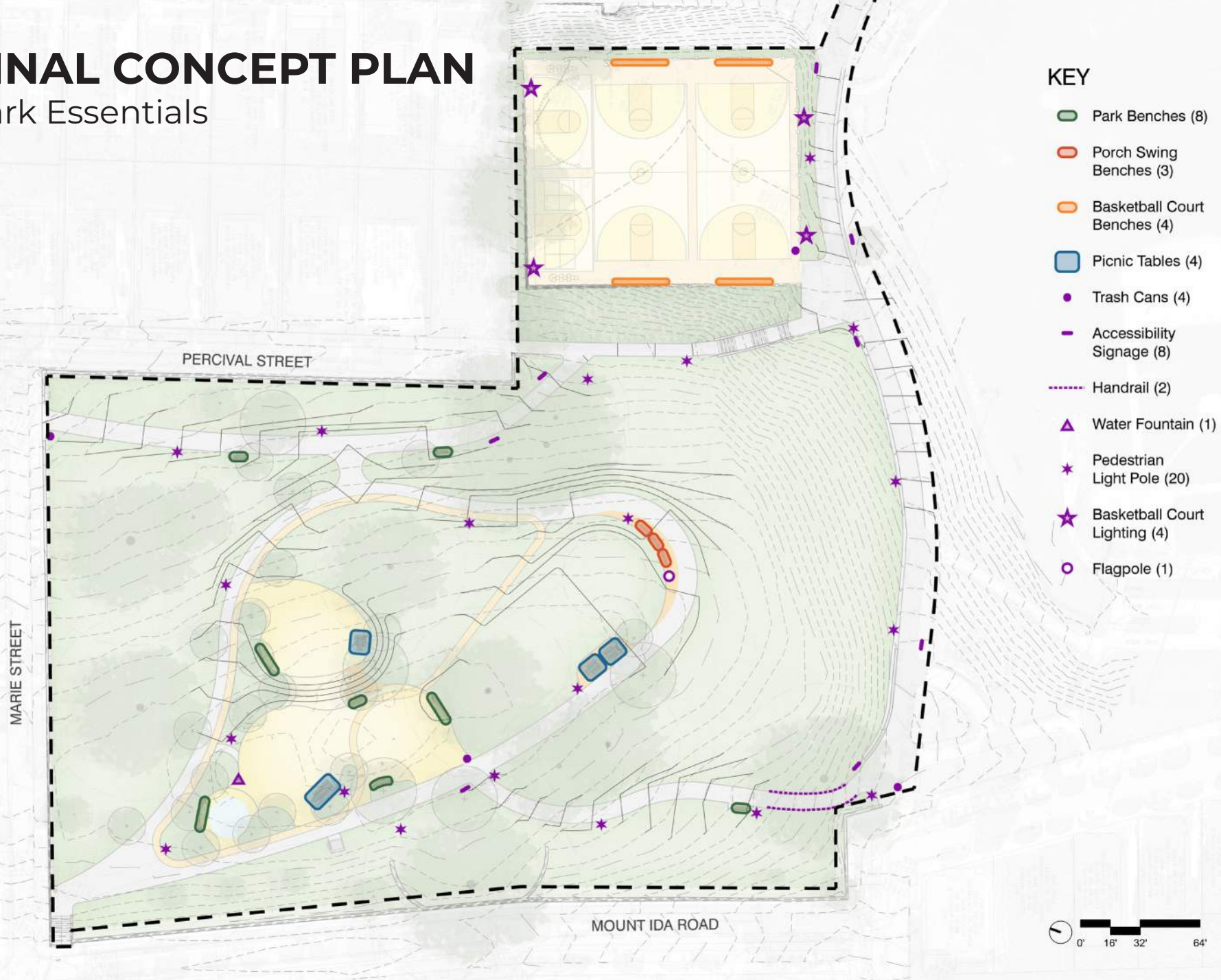
Paint Example



Paint Example

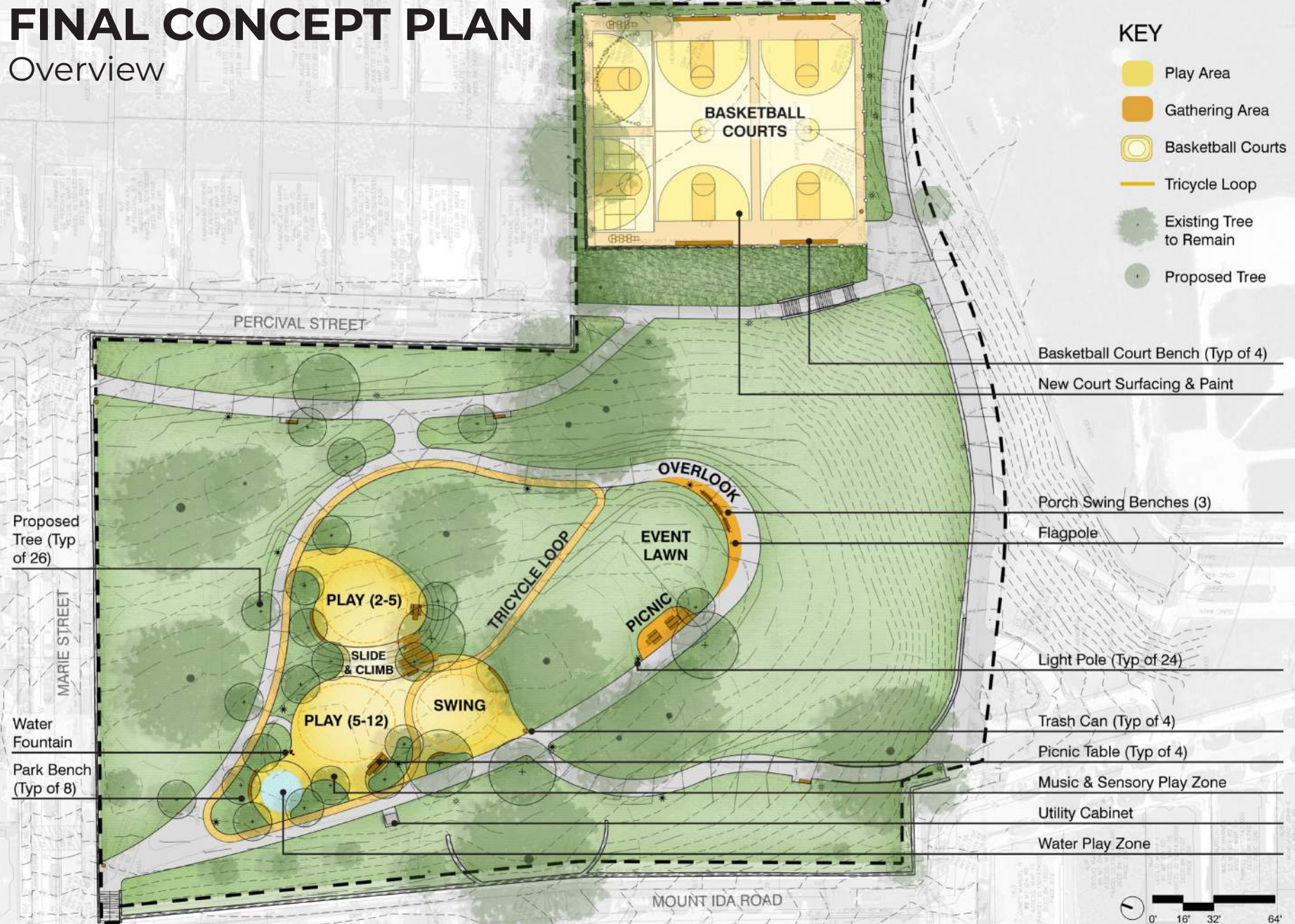
FINAL CONCEPT PLAN

Park Essentials

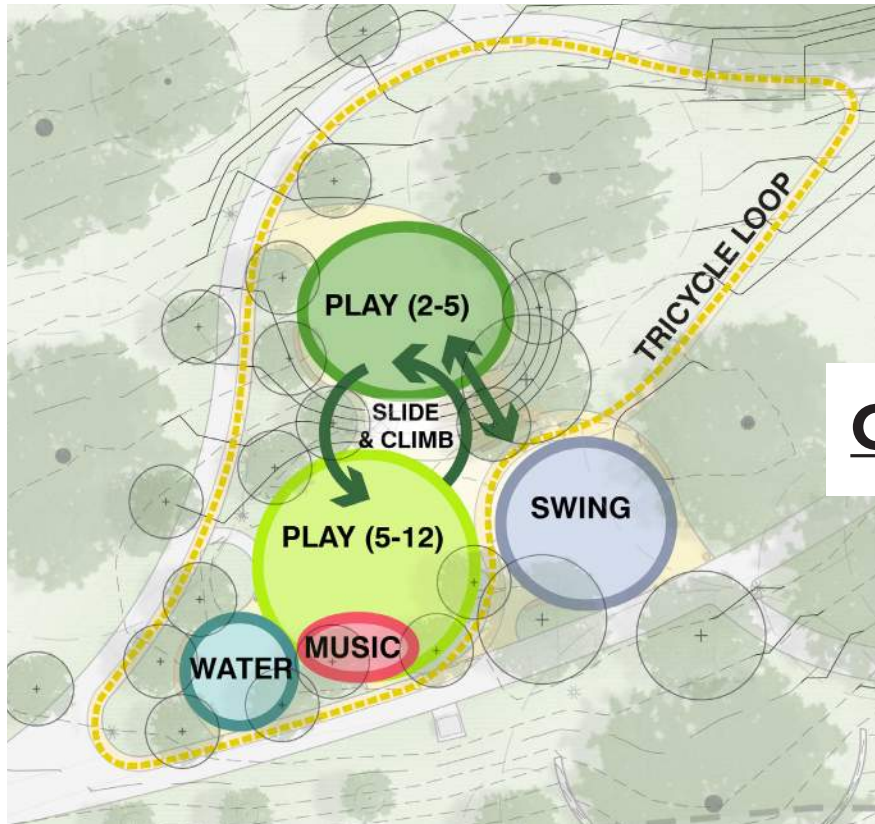


FINAL CONCEPT PLAN

Overview



PLAY LAYOUT DISCUSSION



OR



- Swings at the top of the hill.
- 2-5 year olds at the bottom of the hill.
- 5-12 year olds at the top of the hill.

- Swings at the bottom of the hill.
- All age groups at the top of the hill.

SLIDE & CLIMB EXAMPLES



PLAY EQUIPMENT | AGE 5-12

Option A: Tall Tower



PLAY EQUIPMENT | AGE 5-12

Option B: Wide Net



PLAY EQUIPMENT | AGE 5-12

Option C: Hybrid Tower + Net



*This piece comes at a higher cost and results in less budget for other play pieces.



PLAY EQUIPMENT | AGE 5-12

Do you prefer a tall tower, wide net, or hybrid?



A: Tower



OR

B: Net



OR

C: Hybrid

PLAY EQUIPMENT | AGE 5-12

Which do you prefer?



OR



BIGGER IS BETTER!
One big play piece

MORE THE MERRIER!
Medium play piece + a few small pieces

PLAY EQUIPMENT | AGE 2-5

Option A: Toddler Tower



PLAY EQUIPMENT | AGE 2-5

Option B: Toddler Net



PLAY EQUIPMENT | AGE 2-5

Option C: Imaginary Play



PLAY EQUIPMENT | AGE 2-5

Do you prefer a toddler tower, toddler net, or imaginary play?



A: Toddler Tower



OR

B: Toddler Net

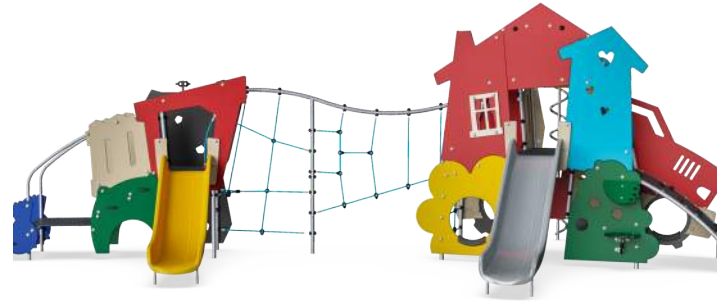


OR

C: Imaginary Play

PLAY EQUIPMENT | AGE 2-5

Which do you prefer?



OR



BIGGER IS BETTER!
One big play piece

MORE THE MERRIER!
Medium play piece + a few small pieces

SWING DISCUSSION

Which swing combination do you prefer?



2 Toddler Swings
1 Belt Swing
1 ADA Swing

Plus



Friendship Swing



Group Swing



You and Me Swing

WATER PLAY DISCUSSION

Which water play feature do you prefer?

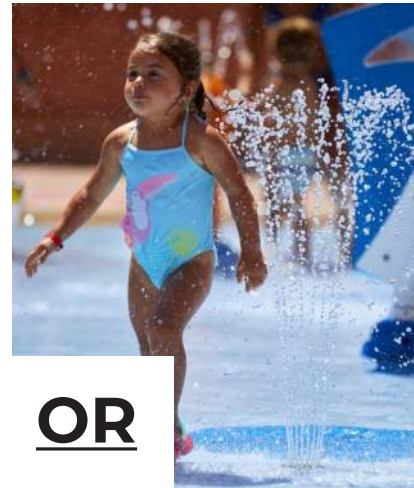


Mist



OR

Loop Spray



OR

In-Ground Spray



OR

Shower Spray

SENSORY PLAY DISCUSSION

What type of sensory play do you prefer?



Sound

OR



Music

OR



Touch and Sound

OR



Movement and Sound

OR



Touch and Graphics



Learning Panel

LISTENING & DISCUSSION



NEXT STEPS

We look forward to hearing from you!

COMMUNITY SURVEY

<https://bit.ly/Ronan-Park-Survey>



Based on your feedback, we are beginning documentation and looking forward to construction beginning Summer 2026.



THANK YOU!

For questions, maintenance requests or
concerns regarding any of our
parks contact 311



To learn more, visit the project website:
www.boston.gov/ronan-park
For questions or comments about this project,
contact Kezia Ofiesh
kezia.ofiesh@boston.gov



October 7, 2025
Boston Parks and Recreation

