



Marc Mazzarelli Associates
Landscape Architecture and Planning

August 14, 2025

Reservoir Towers

1925 Commonwealth Avenue
Brighton, MA

Tree Inventory and Assessment

Existing Conditions – Summer 2025

The landscaped areas of the property are mostly comprised of mature trees. This mix of large trees helps provide visual softening of the building's large scale and mass. However there are a number of trees in need of removal that are diseased, dying and decayed. Other trees to remain will require pruning to remove unsafe dead limbs.

The property also contains some attractive and impressive trees such as the Zelkova near the main entrance, an enormous oak in the parking lot area, and an ancient sugar maple along Chestnut Hill Avenue. These trees are proposed to be preserved in the near term and maintained with pruning work plus fertilization as prescribed by a certified arborist.

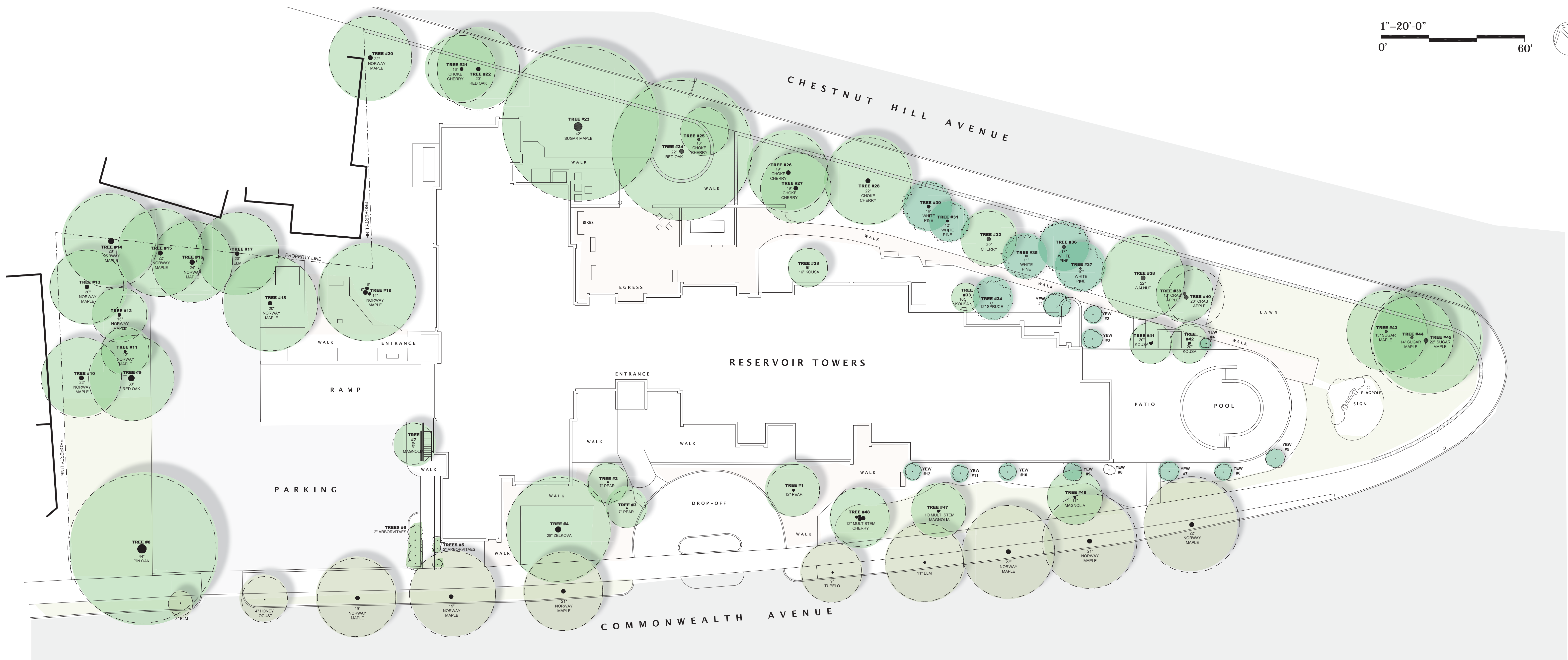
Proposed Improvements

The first step towards a long-term vision for improvements on the property is identifying the trees to be removed and pruned. In most instances this identification is straight forward. In other areas where future hardscape improvements are proposed, the timing of the removals and pruning work may be phased.

The Phase One work focuses on the need for immediate removals and pruning not impacted by future re-designed areas. These areas such as the main entrance area will be improved at a later date, so removing the three existing pear trees in the near term perhaps seems premature. In other areas, such as along Chestnut Hill Avenue, tree work done this year will not be impacted by any significant future hardscape improvements.

The proposed Phase Two work shown on the plans addresses lower priority tree removals and pruning. And for comparison, the plans also illustrate the tree work from the proposal sent by Riverside Services.

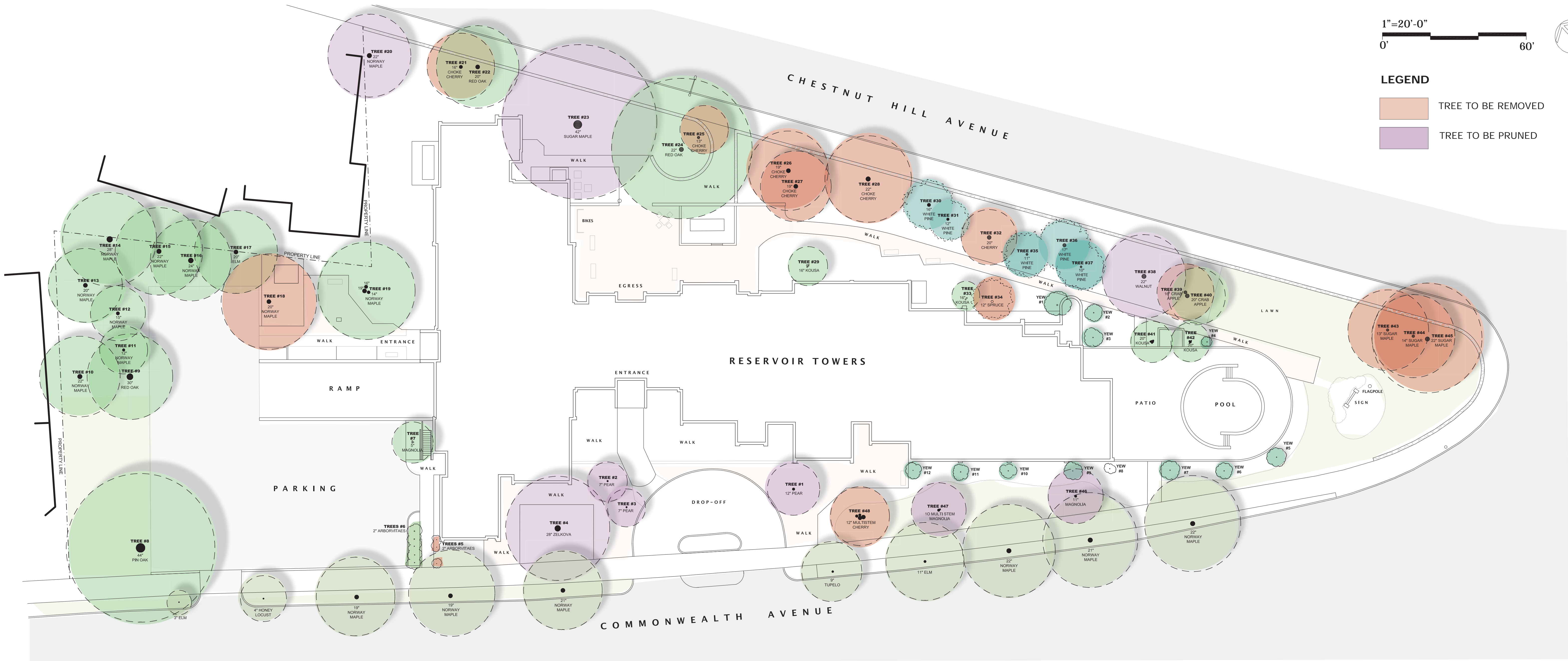
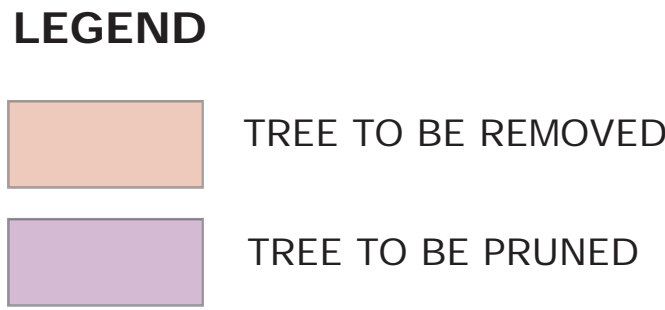
Marc Mazzarelli
RLA MA #1129



SECTION 1. LIST OF TREES				SECTION 2. CONDITION	SECTION 3. NOTES/RECOMMENDATIONS
Tree #	Common Name / Genus-Species	DBH	REMOVE		
1	Pear / Pyrus calleryana	12"	NO	FAIR	NEAR TERM RECOMMENDATION IS TO PRUNE TREE FOR SAFETY. WILL BE REMOVED AS PART OF THE FUTURE ENTRANCE AREA IMPROVEMENTS.
2	Pear / Pyrus calleryana	7"	NO	POOR	NEAR TERM RECOMMENDATION IS TO PRUNE TREE FOR SAFETY. WILL BE REMOVED AS PART OF THE FUTURE ENTRANCE AREA IMPROVEMENTS.
3	Pear / Pyrus calleryana	7"	NO	POOR	NEAR TERM RECOMMENDATION IS TO PRUNE TREE FOR SAFETY. WILL BE REMOVED AS PART OF THE FUTURE ENTRANCE AREA IMPROVEMENTS.
4	Zelkova / Zelkova serrata	28"	NO	GOOD	PRUNE DEAD LIMBS. RECOMMEND ARBORIST ASSESS FOR HEALTH AND TREAT AS NEEDED. VISIBLE BARK LOSS. VERY NICE TREE WORTH SAVING.
5	Arborvitae / Thuja	2"	YES	POOR	REMOVE ALL PLANTS ON THE EAST SIDE OF WALK. POOR CONDITION. UNATTRACTIVE.
6	Arborvitae / Thuja	2"	NO	FAIR	THESE TREES ARE PROVIDING ADEQUATE SCREENING. THIS TREE WILL BE ASSESSED AGAIN AS PART OF THE PARKING LOT IMPROVEMENTS STUDIES.
7	Magnolia / Magnolia stellata	5"	NO	GOOD	PRUNE DEAD LIMBS. LOW PRIORITY. THIS TREE WILL BE ASSESSED AGAIN AS PART OF THE PARKING LOT IMPROVEMENTS STUDIES.
8	Pin Oak / Quercus palustris	44"	NO	GOOD	PRUNE DEAD LIMBS. LOW PRIORITY. THIS TREE WILL BE ASSESSED AGAIN AS PART OF THE PARKING LOT IMPROVEMENTS STUDIES.
9	Red Oak / Quercus robur	30"	NO	GOOD	PRUNE OVERHANGING LIMBS.
10	Norway Maple / Acer platanoides	22"	NO	FAIR	REMOVE/PRUNE DEAD CENTER LEADER. THIS TREE WILL BE ASSESSED AGAIN AS PART OF THE PARKING LOT IMPROVEMENTS STUDIES.
11	Norway Maple / Acer platanoides	12"	NO	FAIR	PRUNE DEAD LIMBS. LOW PRIORITY. THIS TREE WILL BE ASSESSED AGAIN AS PART OF THE PARKING LOT IMPROVEMENTS STUDIES.
12	Norway Maple / Acer platanoides	15"	NO	GOOD	PRUNE DEAD LIMBS. LOW PRIORITY. THIS TREE WILL BE ASSESSED AGAIN AS PART OF THE PARKING LOT IMPROVEMENTS STUDIES.
13	Norway Maple / Acer platanoides	20"	NO	GOOD	PRUNE DEAD LIMBS. LOW PRIORITY. THIS TREE WILL BE ASSESSED AGAIN AS PART OF THE PARKING LOT IMPROVEMENTS STUDIES.
14	Norway Maple / Acer platanoides	28"	NO	GOOD	PRUNE DEAD LIMBS. LOW PRIORITY. THIS TREE WILL BE ASSESSED AGAIN AS PART OF THE PARKING LOT IMPROVEMENTS STUDIES.
15	Norway Maple / Acer platanoides	22"	NO	GOOD	PRUNE DEAD LIMBS. LOW PRIORITY. THIS TREE WILL BE ASSESSED AGAIN AS PART OF THE PARKING LOT IMPROVEMENTS STUDIES.
16	Norway Maple / Acer platanoides	24"	NO	GOOD/FAIR	PRUNE DEAD LIMBS. LOW PRIORITY. THIS TREE WILL BE ASSESSED AGAIN AS PART OF THE PARKING LOT IMPROVEMENTS STUDIES.
17	Elm / Ulmus species	20"	NO	GOOD/FAIR	PRUNE DEAD LIMBS. LOW PRIORITY. THIS TREE WILL BE ASSESSED AGAIN AS PART OF THE PARKING LOT IMPROVEMENTS STUDIES.
18	Norway Maple / Acer platanoides	20"	YES	FAIR/POOR	REMOVE TREE IN TRASH ENCLOSURE AREA.
19	Norway Maple / Acer platanoides	16", 14", 19"	NO	GOOD/FAIR	PRUNE DEAD LIMBS. LOW PRIORITY. THIS TREE WILL BE ASSESSED AGAIN AS PART OF THE PARKING LOT IMPROVEMENTS STUDIES.
20	Norway Maple / Acer platanoides	22"	NO	GOOD	PRUNE OVERHANGING LIMBS. EXTENSIVE ROOT SYSTEM THAT MAY BE DAMAGING NEIGHBORING FOUNDATION. FUTURE REMOVAL.
21	Choke Cherry / Prunus virginiana	16"	YES	POOR	CROWN DIEBACK. REMOVE TREE.
22	Red Oak / Quercus robur	20"	NO	GOOD	PRUNE OVERHANGING & DEAD LIMBS.
23	Sugar Maple / Acer saccharinum	42"	NO	GOOD/FAIR	PRUNE DEAD LIMBS.
24	Red Oak / Quercus robur	22"	NO	GOOD	PRUNE DEAD LIMBS.
25	Choke Cherry / Prunus virginiana	13"	YES	POOR	CROWN DIEBACK. REMOVE TREE.
26	Choke Cherry / Prunus virginiana	19"	YES	POOR	CROWN DIEBACK. REMOVE TREE.
27	Choke Cherry / Prunus virginiana	19"	YES	POOR	CROWN DIEBACK. REMOVE TREE.
28	Choke Cherry / Prunus virginiana	22"	YES	POOR	VISIBLE SIGNS OF DISEASE, DECAY & DECLINE. REMOVE TREE.
29	Kousa Dogwood / Cornus kousa	16"	NO	GOOD	SELECTIVELY PRUNE LIMBS AS REQUIRED. LOW PRIORITY.
30	White Pine / Pinus strobus	16"	NO	GOOD	SELECTIVELY PRUNE LIMBS AS REQUIRED. LOW PRIORITY.
31	White Pine / Pinus strobus	12"	NO	GOOD	SELECTIVELY PRUNE LIMBS AS REQUIRED. LOW PRIORITY.
32	Cherry / Prunus species	20"	YES	POOR	EXTENSIVE VISIBLE DECAY & ROT. REMOVE TREE.

SECTION 1. LIST OF TREES				SECTION 2. CONDITION	SECTION 3. NOTES/RECOMMENDATIONS
Tree #	Common Name / Genus-Species	DBH	REMOVE		
33	Kousa Dogwood / Cornus kousa	16"	NO	FAIR	SELECTIVELY PRUNE LIMBS AS REQUIRED. LOW PRIORITY.
34	Spruce / Picea species	12"	YES	FAIR/POOR	PLANTED TOO CLOSE TO BUILDING. REMOVE TREE.
35	White Pine / Pinus strobus	11"	YES	POOR	REMOVE TREE.
36	White Pine / Pinus strobus	17"	NO	GOOD	SELECTIVELY PRUNE LIMBS AS REQUIRED.
37	White Pine / Pinus strobus	10"	YES	POOR	REMOVE TREE.
38	Black Walnut / Juncus nigra	22"	NO	GOOD	SELECTIVELY PRUNE LIMBS AS REQUIRED. NICE TREE.
39	Malus / Crab Apple	16"	NO	GOOD/FAIR	THIS TREE APPEARS HEALTHY.
40	Malus / Crab Apple	20"	YES	POOR	DEAD TREE. REMOVE.
41	Kousa Dogwood / Cornus kousa	20"	NO	GOOD	SELECTIVELY PRUNE LIMBS AS REQUIRED. NICE TREE.
42	Kousa Dogwood / Cornus kousa	20"	NO	GOOD	SELECTIVELY PRUNE LIMBS AS REQUIRED. NICE TREE.
43	Sugar Maple / Acer saccharinum	13"	YES	FAIR/POOR	VISIBLE SIGNS OF DISEASE, DECAY & DECLINE. REMOVE TREE.
44	Sugar Maple / Acer saccharinum	14"	YES	FAIR/POOR	VISIBLE SIGNS OF DISEASE, DECAY & DECLINE. REMOVE TREE.
45	Sugar Maple / Acer saccharinum	22"	YES	FAIR/POOR	VISIBLE SIGNS OF DISEASE, DECAY & DECLINE. REMOVE TREE.
46	Magnolia / Magnolia species	11"	NO	GOOD	SELECTIVELY PRUNE LIMBS AS REQUIRED.
47	Magnolia / Magnolia species	10"	NO	GOOD	SELECTIVELY PRUNE LIMBS AS REQUIRED.
48	Cherry / Prunus species	12"	YES	POOR	VISIBLE SIGNS OF DISEASE & DECAY. REMOVE TREE.

SECTION 1. LIST OF TALL YEWS				SECTION 2. CONDITION	SECTION 3. NOTES/RECOMMENDATIONS
Tree #	Common Name / Genus-Species	SIZE	REMOVED		
1	Capitata Yew	15'	NO	GOOD	NICE LOOKING PLANT. ASSESS AGAIN AFTER TREE REMOVAL WORK AND FUTURE IMPROVEMENTS PLANS.
2	Capitata Yew	12'	NO	GOOD/FAIR	ASSESS AGAIN AFTER TREE REMOVAL WORK AND FUTURE IMPROVEMENTS PLANS.
3	Capitata Yew	10'	NO	GOOD/FAIR	ASSESS AGAIN AFTER TREE REMOVAL WORK AND FUTURE IMPROVEMENTS PLANS.
4	Capitata Yew	10'	NO	GOOD	ASSESS AGAIN AFTER TREE REMOVAL WORK AND FUTURE IMPROVEMENTS PLANS.
5	Capitata Yew	10'	NO	GOOD	RETAIN AS PART OF EVERGREEN PLANT SCREEN AT POOL ENCLOSURE WALL.
6	Capitata Yew	10'	NO	GOOD	RETAIN AS PART OF EVERGREEN PLANT SCREEN AT POOL ENCLOSURE WALL.
7	Capitata Yew	10'	NO	GOOD	RETAIN AS PART OF EVERGREEN PLANT SCREEN AT POOL ENCLOSURE WALL.
8	Capitata Yew	6'	YES	POOR	DEAD. REMOVE.
9	Capitata Yew	9'	YES	POOR	REMOVE.
10	Capitata Yew	10'	YES	POOR	REMOVE.
11	Capitata Yew	11'	NO	GOOD	ASSESS AGAIN AFTER TREE REMOVAL WORK AND FUTURE IMPROVEMENTS PLANS.
12	Capitata Yew	12'	NO	GOOD	ASSESS AGAIN AFTER TREE REMOVAL WORK AND FUTURE IMPROVEMENTS PLANS.



SECTION 1. LIST OF TREES				SECTION 2. CONDITION	SECTION 3. NOTES/RECOMMENDATIONS
Tree #	Common Name / Genus-Species	DBH	REMOVE		
1	Pear / Pyrus calleryana	12"	NO	FAIR	NEAR TERM RECOMMENDATION IS TO PRUNE TREE FOR SAFETY. WILL BE REMOVED AS PART OF THE FUTURE ENTRANCE AREA IMPROVEMENTS.
2	Pear / Pyrus calleryana	7"	NO	POOR	NEAR TERM RECOMMENDATION IS TO PRUNE TREE FOR SAFETY. WILL BE REMOVED AS PART OF THE FUTURE ENTRANCE AREA IMPROVEMENTS.
3	Pear / Pyrus calleryana	7"	NO	POOR	NEAR TERM RECOMMENDATION IS TO PRUNE TREE FOR SAFETY. WILL BE REMOVED AS PART OF THE FUTURE ENTRANCE AREA IMPROVEMENTS.
4	Zelkova / Zelkova serrata	28"	NO	GOOD	PRUNE DEAD LIMBS. RECOMMEND ARBORIST ASSESS FOR HEALTH AND TREAT AS NEEDED. VISIBLE BARK LOSS. VERY NICE TREE WORTH SAVING.
5	Arborvitae / Thuja	2"	YES	POOR	REMOVE ALL PLANTS ON THE EAST SIDE OF WALK. POOR CONDITION. UNATTRACTIVE.
6	Arborvitae / Thuja	2"	NO	FAIR	THESE TREES ARE PROVIDING ADEQUATE SCREENING. THIS TREE WILL BE ASSESSED AGAIN AS PART OF THE PARKING LOT IMPROVEMENTS STUDIES.
7	Magnolia / Magnolia stellata	5"	NO	GOOD	PRUNE DEAD LIMBS. LOW PRIORITY. THIS TREE WILL BE ASSESSED AGAIN AS PART OF THE PARKING LOT IMPROVEMENTS STUDIES.
8	Pin Oak / Quercus palustris	44"	NO	GOOD	PRUNE DEAD LIMBS. LOW PRIORITY. THIS TREE WILL BE ASSESSED AGAIN AS PART OF THE PARKING LOT IMPROVEMENTS STUDIES.
9	Red Oak / Quercus robur	30"	NO	GOOD	PRUNE OVERHANGING LIMBS.
10	Norway Maple / Acer platanoides	22"	NO	FAIR	REMOVE/PRUNE DEAD CENTER LEADER. THIS TREE WILL BE ASSESSED AGAIN AS PART OF THE PARKING LOT IMPROVEMENTS STUDIES.
11	Norway Maple / Acer platanoides	12"	NO	FAIR	PRUNE DEAD LIMBS. LOW PRIORITY. THIS TREE WILL BE ASSESSED AGAIN AS PART OF THE PARKING LOT IMPROVEMENTS STUDIES.
12	Norway Maple / Acer platanoides	15"	NO	GOOD	PRUNE DEAD LIMBS. LOW PRIORITY. THIS TREE WILL BE ASSESSED AGAIN AS PART OF THE PARKING LOT IMPROVEMENTS STUDIES.
13	Norway Maple / Acer platanoides	20"	NO	GOOD	PRUNE DEAD LIMBS. LOW PRIORITY. THIS TREE WILL BE ASSESSED AGAIN AS PART OF THE PARKING LOT IMPROVEMENTS STUDIES.
14	Norway Maple / Acer platanoides	28"	NO	GOOD	PRUNE DEAD LIMBS. LOW PRIORITY. THIS TREE WILL BE ASSESSED AGAIN AS PART OF THE PARKING LOT IMPROVEMENTS STUDIES.
15	Norway Maple / Acer platanoides	22"	NO	GOOD	PRUNE DEAD LIMBS. LOW PRIORITY. THIS TREE WILL BE ASSESSED AGAIN AS PART OF THE PARKING LOT IMPROVEMENTS STUDIES.
16	Norway Maple / Acer platanoides	24"	NO	GOOD/FAIR	PRUNE DEAD LIMBS. LOW PRIORITY. THIS TREE WILL BE ASSESSED AGAIN AS PART OF THE PARKING LOT IMPROVEMENTS STUDIES.
17	Elm / Ulmus species	20"	NO	GOOD/FAIR	PRUNE DEAD LIMBS. LOW PRIORITY. THIS TREE WILL BE ASSESSED AGAIN AS PART OF THE PARKING LOT IMPROVEMENTS STUDIES.
18	Norway Maple / Acer platanoides	20"	YES	FAIR/POOR	REMOVE TREE IN TRASH ENCLOSURE AREA.
19	Norway Maple / Acer platanoides	16", 14", 19"	NO	GOOD/FAIR	PRUNE DEAD LIMBS. LOW PRIORITY. THIS TREE WILL BE ASSESSED AGAIN AS PART OF THE PARKING LOT IMPROVEMENTS STUDIES.
20	Norway Maple / Acer platanoides	22"	NO	GOOD	PRUNE OVERHANGING LIMBS. EXTENSIVE ROOT SYSTEM THAT MAY BE DAMAGING NEIGHBORING FOUNDATION. FUTURE REMOVAL.
21	Choke Cherry / Prunus virginiana	16"	YES	POOR	CROWN DIEBACK. REMOVE TREE.
22	Red Oak / Quercus robur	20"	NO	GOOD	PRUNE OVERHANGING & DEAD LIMBS.
23	Sugar Maple / Acer saccharinum	42"	NO	GOOD/FAIR	PRUNE DEAD LIMBS.
24	Red Oak / Quercus robur	22"	NO	GOOD	PRUNE DEAD LIMBS.
25	Choke Cherry / Prunus virginiana	13"	YES	POOR	CROWN DIEBACK. REMOVE TREE.
26	Choke Cherry / Prunus virginiana	19"	YES	POOR	CROWN DIEBACK. REMOVE TREE.
27	Choke Cherry / Prunus virginiana	19"	YES	POOR	CROWN DIEBACK. REMOVE TREE.
28	Choke Cherry / Prunus virginiana	22"	YES	POOR	VISIBLE SIGNS OF DISEASE, DECAY & DECLINE. REMOVE TREE.
29	Kousa Dogwood / Cornus kousa	16"	NO	GOOD	SELECTIVELY PRUNE LIMBS AS REQUIRED. LOW PRIORITY.
30	White Pine / Pinus strobus	16"	NO	GOOD	SELECTIVELY PRUNE LIMBS AS REQUIRED. LOW PRIORITY.
31	White Pine / Pinus strobus	12"	NO	GOOD	SELECTIVELY PRUNE LIMBS AS REQUIRED. LOW PRIORITY.
32	Cherry / Prunus species	20"	YES	POOR	EXTENSIVE VISIBLE DECAY & ROT. REMOVE TREE.

SECTION 1. LIST OF TREES				SECTION 2. CONDITION	SECTION 3. NOTES/RECOMMENDATIONS
Tree #	Common Name / Genus-Species	DBH	REMOVE		
33	Kousa Dogwood / Cornus kousa	16"	NO	FAIR	SELECTIVELY PRUNE LIMBS AS REQUIRED. LOW PRIORITY.
34	Spruce / Picea species	12"	YES	FAIR/POOR	PLANTED TOO CLOSE TO BUILDING. REMOVE TREE.
35	White Pine / Pinus strobus	11"	YES	POOR	REMOVE TREE.
36	White Pine / Pinus strobus	17"	NO	GOOD	SELECTIVELY PRUNE LIMBS AS REQUIRED.
37	White Pine / Pinus strobus	10"	YES	POOR	REMOVE TREE.
38	Black Walnut / Juncus nigra	22"	NO	GOOD	SELECTIVELY PRUNE LIMBS AS REQUIRED. NICE TREE.
39	Malus / Crab Apple	16"	NO	GOOD/FAIR	THIS TREE APPEARS HEALTHY.
40	Malus / Crab Apple	20"	YES	POOR	DEAD TREE. REMOVE.
41	Kousa Dogwood / Cornus kousa	20"	NO	GOOD	SELECTIVELY PRUNE LIMBS AS REQUIRED. NICE TREE.
42	Kousa Dogwood / Cornus kousa	20"	NO	GOOD	SELECTIVELY PRUNE LIMBS AS REQUIRED. NICE TREE.
43	Sugar Maple / Acer saccharinum	13"	YES	FAIR/POOR	VISIBLE SIGNS OF DISEASE, DECAY & DECLINE. REMOVE TREE.
44	Sugar Maple / Acer saccharinum	14"	YES	FAIR/POOR	VISIBLE SIGNS OF DISEASE, DECAY & DECLINE. REMOVE TREE.
45	Sugar Maple / Acer saccharinum	22"	YES	FAIR/POOR	VISIBLE SIGNS OF DISEASE, DECAY & DECLINE. REMOVE TREE.
46	Magnolia / Magnolia species	11"	NO	GOOD	SELECTIVELY PRUNE LIMBS AS REQUIRED.
47	Magnolia / Magnolia species	10"	NO	GOOD	SELECTIVELY PRUNE LIMBS AS REQUIRED.
48	Cherry / Prunus species	12"	YES	POOR	VISIBLE SIGNS OF DISEASE & DECAY. REMOVE TREE.

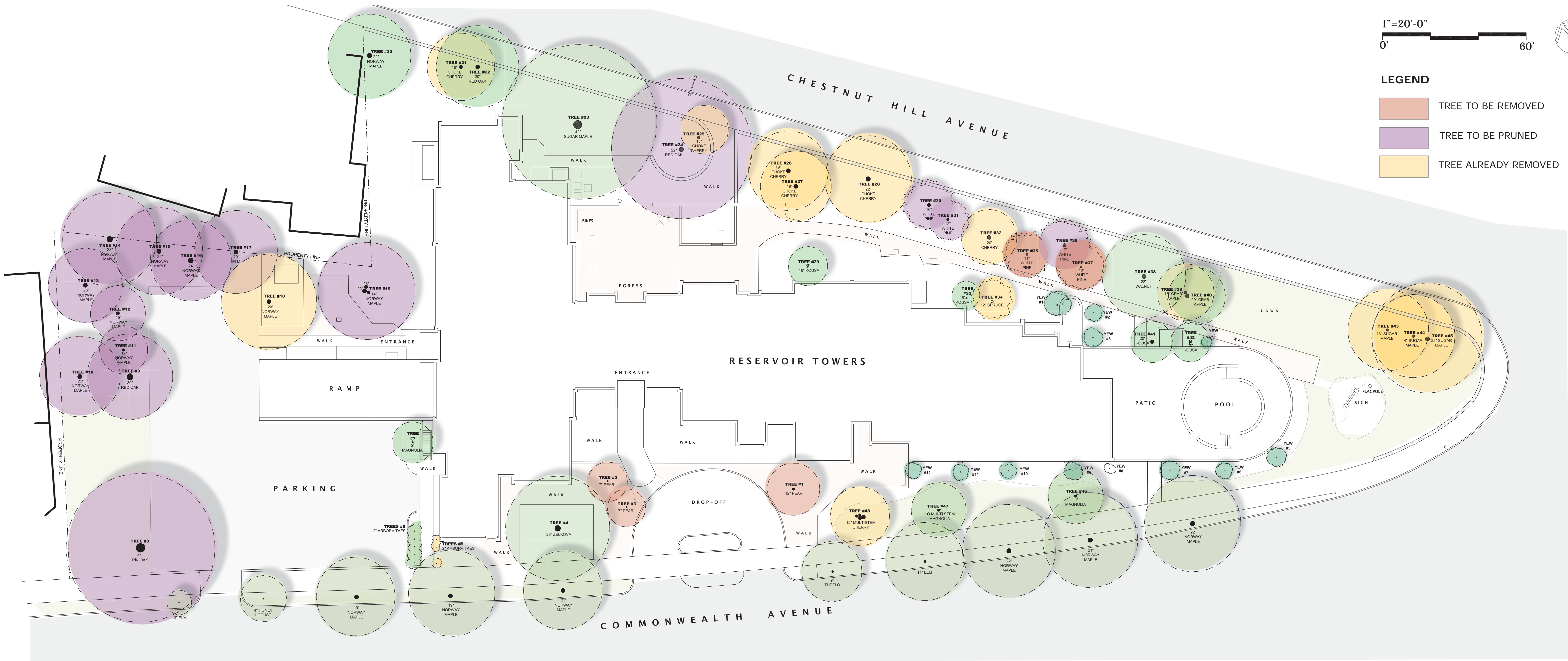
SECTION 1. LIST OF TALL YEWS				SECTION 2. CONDITION	SECTION 3. NOTES/RECOMMENDATIONS
Tree #	Common Name / Genus-Species	SIZE	REMOVED		
1	Capitata Yew	15'	NO	GOOD	NICE LOOKING PLANT. ASSESS AGAIN AFTER TREE REMOVAL WORK AND FUTURE IMPROVEMENTS PLANS.
2	Capitata Yew	12'	NO	GOOD/FAIR	ASSESS AGAIN AFTER TREE REMOVAL WORK AND FUTURE IMPROVEMENTS PLANS.
3	Capitata Yew	10'	NO	GOOD/FAIR	ASSESS AGAIN AFTER TREE REMOVAL WORK AND FUTURE IMPROVEMENTS PLANS.
4	Capitata Yew	10'	NO	GOOD	ASSESS AGAIN AFTER TREE REMOVAL WORK AND FUTURE IMPROVEMENTS PLANS.
5	Capitata Yew	10'	NO	GOOD	RETAIN AS PART OF EVERGREEN PLANT SCREEN AT POOL ENCLOSURE WALL.
6	Capitata Yew	10'	NO	GOOD	RETAIN AS PART OF EVERGREEN PLANT SCREEN AT POOL ENCLOSURE WALL.
7	Capitata Yew	10'	NO	GOOD	RETAIN AS PART OF EVERGREEN PLANT SCREEN AT POOL ENCLOSURE WALL.
8	Capitata Yew	6'	YES	POOR	DEAD. REMOVE.
9	Capitata Yew	9'	YES	POOR	REMOVE.
10	Capitata Yew	10'	YES	POOR	REMOVE.
11	Capitata Yew	11'	NO	GOOD	ASSESS AGAIN AFTER TREE REMOVAL WORK AND FUTURE IMPROVEMENTS PLANS.
12	Capitata Yew	12'	NO	GOOD	ASSESS AGAIN AFTER TREE REMOVAL WORK AND FUTURE IMPROVEMENTS PLANS.





LEGEND

- TREE TO BE REMOVED
- TREE TO BE PRUNED
- TREE ALREADY REMOVED



SECTION 1. LIST OF TREES				SECTION 2. CONDITION	SECTION 3. NOTES/RECOMMENDATIONS
Tree #	Common Name / Genus-Species	DBH	REMOVE		
1	Pear / Pyrus calleryana	12"	NO	FAIR	NEAR TERM RECOMMENDATION IS TO PRUNE TREE FOR SAFETY. WILL BE REMOVED AS PART OF THE FUTURE ENTRANCE AREA IMPROVEMENTS.
2	Pear / Pyrus calleryana	7"	NO	POOR	NEAR TERM RECOMMENDATION IS TO PRUNE TREE FOR SAFETY. WILL BE REMOVED AS PART OF THE FUTURE ENTRANCE AREA IMPROVEMENTS.
3	Pear / Pyrus calleryana	7"	NO	POOR	NEAR TERM RECOMMENDATION IS TO PRUNE TREE FOR SAFETY. WILL BE REMOVED AS PART OF THE FUTURE ENTRANCE AREA IMPROVEMENTS.
4	Zelkova / Zelkova serrata	28"	NO	GOOD	PRUNE DEAD LIMBS. RECOMMEND ARBORIST ASSESS FOR HEALTH AND TREAT AS NEEDED. VISIBLE BARK LOSS. VERY NICE TREE WORTH SAVING.
5	Arborvitae / Thuja	2"	YES	POOR	REMOVE ALL PLANTS ON THE EAST SIDE OF WALK. POOR CONDITION. UNATTRACTIVE.
6	Arborvitae / Thuja	2"	NO	FAIR	THESE TREES ARE PROVIDING ADEQUATE SCREENING. THIS TREE WILL BE ASSESSED AGAIN AS PART OF THE PARKING LOT IMPROVEMENTS STUDIES.
7	Magnolia / Magnolia stellata	5"	NO	GOOD	PRUNE DEAD LIMBS. LOW PRIORITY. THIS TREE WILL BE ASSESSED AGAIN AS PART OF THE PARKING LOT IMPROVEMENTS STUDIES.
8	Pin Oak / Quercus palustris	44"	NO	GOOD	PRUNE DEAD LIMBS. LOW PRIORITY. THIS TREE WILL BE ASSESSED AGAIN AS PART OF THE PARKING LOT IMPROVEMENTS STUDIES.
9	Red Oak / Quercus robur	30"	NO	GOOD	PRUNE OVERHANGING LIMBS.
10	Norway Maple / Acer platanoides	22"	NO	FAIR	REMOVE/PRUNE DEAD CENTER LEADER. THIS TREE WILL BE ASSESSED AGAIN AS PART OF THE PARKING LOT IMPROVEMENTS STUDIES.
11	Norway Maple / Acer platanoides	12"	NO	FAIR	PRUNE DEAD LIMBS. LOW PRIORITY. THIS TREE WILL BE ASSESSED AGAIN AS PART OF THE PARKING LOT IMPROVEMENTS STUDIES.
12	Norway Maple / Acer platanoides	15"	NO	GOOD	PRUNE DEAD LIMBS. LOW PRIORITY. THIS TREE WILL BE ASSESSED AGAIN AS PART OF THE PARKING LOT IMPROVEMENTS STUDIES.
13	Norway Maple / Acer platanoides	20"	NO	GOOD	PRUNE DEAD LIMBS. LOW PRIORITY. THIS TREE WILL BE ASSESSED AGAIN AS PART OF THE PARKING LOT IMPROVEMENTS STUDIES.
14	Norway Maple / Acer platanoides	28"	NO	GOOD	PRUNE DEAD LIMBS. LOW PRIORITY. THIS TREE WILL BE ASSESSED AGAIN AS PART OF THE PARKING LOT IMPROVEMENTS STUDIES.
15	Norway Maple / Acer platanoides	22"	NO	GOOD	PRUNE DEAD LIMBS. LOW PRIORITY. THIS TREE WILL BE ASSESSED AGAIN AS PART OF THE PARKING LOT IMPROVEMENTS STUDIES.
16	Norway Maple / Acer platanoides	24"	NO	GOOD/FAIR	PRUNE DEAD LIMBS. LOW PRIORITY. THIS TREE WILL BE ASSESSED AGAIN AS PART OF THE PARKING LOT IMPROVEMENTS STUDIES.
17	Elm / Ulmus species	20"	NO	GOOD/FAIR	PRUNE DEAD LIMBS. LOW PRIORITY. THIS TREE WILL BE ASSESSED AGAIN AS PART OF THE PARKING LOT IMPROVEMENTS STUDIES.
18	Norway Maple / Acer platanoides	20"	YES	FAIR/POOR	REMOVE TREE IN TRASH ENCLOSURE AREA.
19	Norway Maple / Acer platanoides	16", 14", 19"	NO	GOOD FAIR	PRUNE DEAD LIMBS. LOW PRIORITY. THIS TREE WILL BE ASSESSED AGAIN AS PART OF THE PARKING LOT IMPROVEMENTS STUDIES.
20	Norway Maple / Acer platanoides	22"	NO	GOOD	PRUNE OVERHANGING LIMBS. EXTENSIVE ROOT SYSTEM THAT MAY BE DAMAGING NEIGHBORING FOUNDATION. FUTURE REMOVAL.
21	Choke Cherry / Prunus virginiana	16"	YES	POOR	CROWN DIEBACK. REMOVE TREE.
22	Red Oak / Quercus robur	20"	NO	GOOD	PRUNE OVERHANGING & DEAD LIMBS.
23	Sugar Maple / Acer saccharinum	42"	NO	GOOD/FAIR	PRUNE DEAD LIMBS.
24	Red Oak / Quercus robur	22"	NO	GOOD	PRUNE DEAD LIMBS.
25	Choke Cherry / Prunus virginiana	13"	YES	POOR	CROWN DIEBACK. REMOVE TREE.
26	Choke Cherry / Prunus virginiana	19"	YES	POOR	CROWN DIEBACK. REMOVE TREE.
27	Choke Cherry / Prunus virginiana	19"	YES	POOR	CROWN DIEBACK. REMOVE TREE.
28	Choke Cherry / Prunus virginiana	22"	YES	POOR	VISIBLE SIGNS OF DISEASE, DECAY & DECLINE. REMOVE TREE.
29	Kousa Dogwood / Cornus kousa	16"	NO	GOOD	SELECTIVELY PRUNE LIMBS AS REQUIRED. LOW PRIORITY.
30	White Pine / Pinus strobus	16"	NO	GOOD	SELECTIVELY PRUNE LIMBS AS REQUIRED. LOW PRIORITY.
31	White Pine / Pinus strobus	12"	NO	GOOD	SELECTIVELY PRUNE LIMBS AS REQUIRED. LOW PRIORITY.
32	Cherry / Prunus species	20"	YES	POOR	EXTENSIVE VISIBLE DECAY & ROT. REMOVE TREE.

SECTION 1. LIST OF TREES				SECTION 2. CONDITION	SECTION 3. NOTES/RECOMMENDATIONS
Tree #	Common Name / Genus-Species	DBH	REMOVE		
33	Kousa Dogwood / Cornus kousa	16"	NO	FAIR	SELECTIVELY PRUNE LIMBS AS REQUIRED. LOW PRIORITY.
34	Spruce / Picea species	12"	YES	FAIR/POOR	PLANTED TOO CLOSE TO BUILDING. REMOVE TREE.
35	White Pine / Pinus strobus	11"	YES	POOR	REMOVE TREE.
36	White Pine / Pinus strobus	17"	NO	GOOD	SELECTIVELY PRUNE LIMBS AS REQUIRED.
37	White Pine / Pinus strobus	10"	YES	POOR	REMOVE TREE.
38	Black Walnut / Juncus nigra	22"	NO	GOOD	SELECTIVELY PRUNE LIMBS AS REQUIRED. NICE TREE.
39	Malus / Crab Apple	16"	NO	GOOD/FAIR	THIS TREE APPEARS HEALTHY.
40	Malus / Crab Apple	20"	YES	POOR	DEAD TREE. REMOVE.
41	Kousa Dogwood / Cornus kousa	20"	NO	GOOD	SELECTIVELY PRUNE LIMBS AS REQUIRED. NICE TREE.
42	Kousa Dogwood / Cornus kousa	20"	NO	GOOD	SELECTIVELY PRUNE LIMBS AS REQUIRED. NICE TREE.
43	Sugar Maple / Acer saccharinum	13"	YES	FAIR/POOR	VISIBLE SIGNS OF DISEASE, DECAY & DECLINE. REMOVE TREE.
44	Sugar Maple / Acer saccharinum	14"	YES	FAIR/POOR	VISIBLE SIGNS OF DISEASE, DECAY & DECLINE. REMOVE TREE.
45	Sugar Maple / Acer saccharinum	22"	YES	FAIR/POOR	VISIBLE SIGNS OF DISEASE, DECAY & DECLINE. REMOVE TREE.
46	Magnolia / Magnolia species	11"	NO	GOOD	SELECTIVELY PRUNE LIMBS AS REQUIRED.
47	Magnolia / Magnolia species	10"	NO	GOOD	SELECTIVELY PRUNE LIMBS AS REQUIRED.
48	Cherry / Prunus species	12"	YES	POOR	VISIBLE SIGNS OF DISEASE & DECAY. REMOVE TREE.

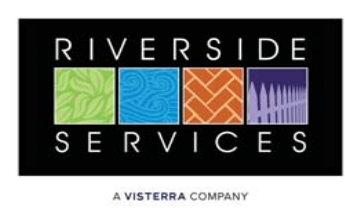
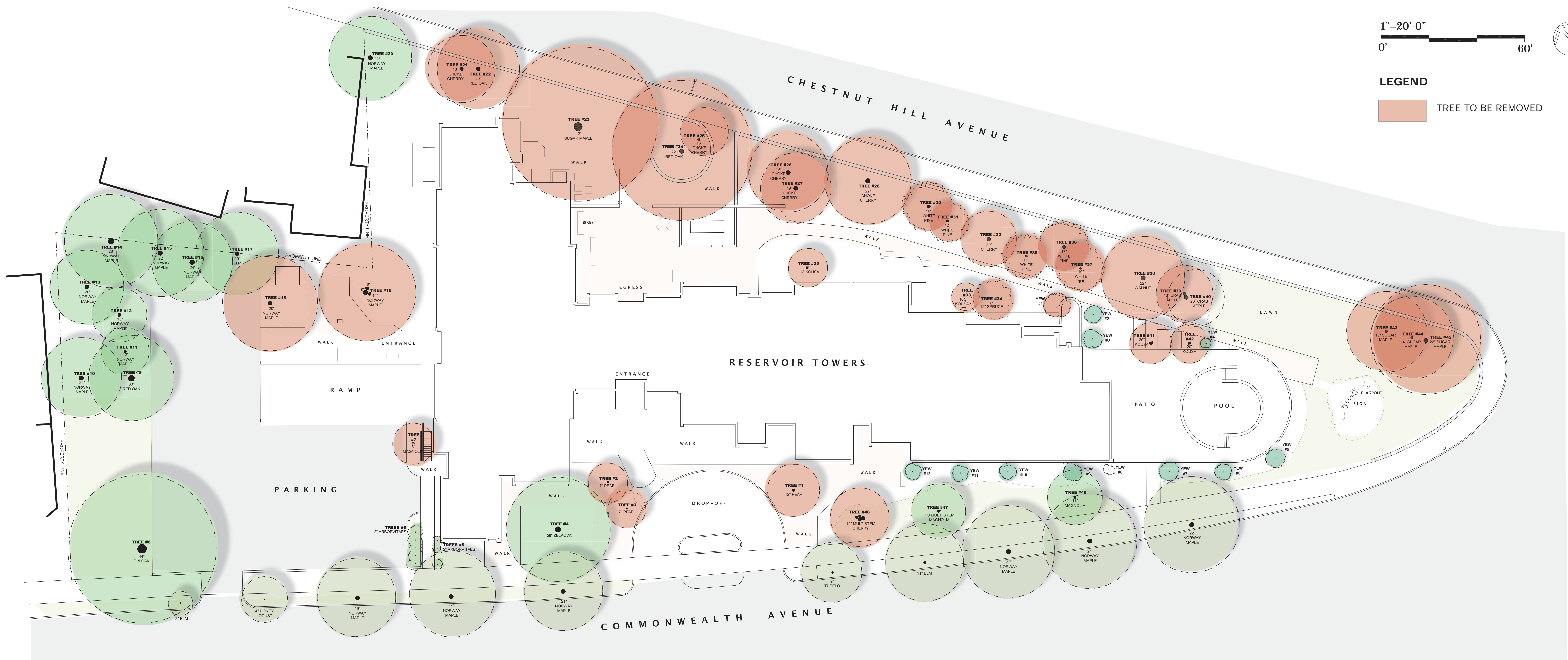
SECTION 1. LIST OF TALL YEWS				SECTION 2. CONDITION	SECTION 3. NOTES/RECOMMENDATIONS
Tree #	Common Name / Genus-Species	SIZE	REMOVED		
1	Capitata Yew	15'	NO	GOOD	NICE LOOKING PLANT. ASSESS AGAIN AFTER TREE REMOVAL WORK AND FUTURE IMPROVEMENTS PLANS.
2	Capitata Yew	12'	NO	GOOD/FAIR	ASSESS AGAIN AFTER TREE REMOVAL WORK AND FUTURE IMPROVEMENTS PLANS.
3	Capitata Yew	10'	NO	GOOD/FAIR	ASSESS AGAIN AFTER TREE REMOVAL WORK AND FUTURE IMPROVEMENTS PLANS.
4	Capitata Yew	10'	NO	GOOD	ASSESS AGAIN AFTER TREE REMOVAL WORK AND FUTURE IMPROVEMENTS PLANS.
5	Capitata Yew	10'	NO	GOOD	RETAIN AS PART OF EVERGREEN PLANT SCREEN AT POOL ENCLOSURE WALL.
6	Capitata Yew	10'	NO	GOOD	RETAIN AS PART OF EVERGREEN PLANT SCREEN AT POOL ENCLOSURE WALL.
7	Capitata Yew	10'	NO	GOOD	RETAIN AS PART OF EVERGREEN PLANT SCREEN AT POOL ENCLOSURE WALL.
8	Capitata Yew	6'	YES	POOR	DEAD. REMOVE.
9	Capitata Yew	9'	YES	POOR	REMOVE.
10	Capitata Yew	10'	YES	POOR	REMOVE.
11	Capitata Yew	11'	NO	GOOD	ASSESS AGAIN AFTER TREE REMOVAL WORK AND FUTURE IMPROVEMENTS PLANS.
12	Capitata Yew	12'	NO	GOOD	ASSESS AGAIN AFTER TREE REMOVAL WORK AND FUTURE IMPROVEMENTS PLANS.





LEGEND

TREE TO BE REMOVED



Riverside Services
71 South Street
Hopkinton, MA 01748

PROPOSAL

Property:
Wingate Reservoir Towers
1925 Commonwealth Ave
Boston, MA 02135
Proposal: 52220
Date: 4/23/2025

#52220 Tree Removal

- Remove 1 cherry tree and 3 pears in front of main entrance.
- Remove 1 magnolia tree located in side parking lot close to building.
- Remove maple tree with dead top and decay in trunk located inside trash barrel area (Priority).
- Remove triple trunked maple tree outside of left side entrance.
- Remove oak, cherry and sugar maple trees located back left of building.
- Remove oak and cherry trees located on right side of walk leading to rear entrance.
- Remove 3 cherry trees, 2 dogwoods and 1 spruce tree from back of building.
- Remove 5 pine trees, 1 cherry and 1 larger yew back of building closer to rear right.
- Remove 1 ash tree, 1 cherry tree, 1 crabapple tree and 2 dogwood trees located back of pool area. (Priority).
- Remove 3 declining maple trees near intersection of Chestnut Hill Dr and Commonwealth on corner (Priority)
- ALL STUMPS FROM TREE REMOVAL CAN BE GROUND WITH SEPERATE PROPOSAL.



Marc Mazzealli Associates LLC
Landscape Architecture + Planning
284 Concord Avenue
Cambridge, MA 02138 USA
617-460-7913
www.mmazz.com

Reservoir Towers | 1925 Commonwealth Avenue
Brighton, Massachusetts

Riverside Services Proposal Plan L-4

August 14, 2025



SECTION 1. LIST OF TREES				SECTION 2. CONDITION	SECTION 3. NOTES/RECOMMENDATIONS
Tree #	Common Name / Genus-Species	DBH	REMOVE		
1	Pear / Pyrus calleryana	12"	NO	FAIR	NEAR TERM RECOMMENDATION IS TO PRUNE TREE FOR SAFETY. WILL BE REMOVED AS PART OF THE FUTURE ENTRANCE AREA IMPROVEMENTS.
2	Pear / Pyrus calleryana	7"	NO	POOR	NEAR TERM RECOMMENDATION IS TO PRUNE TREE FOR SAFETY. WILL BE REMOVED AS PART OF THE FUTURE ENTRANCE AREA IMPROVEMENTS.
3	Pear / Pyrus calleryana	7"	NO	POOR	NEAR TERM RECOMMENDATION IS TO PRUNE TREE FOR SAFETY. WILL BE REMOVED AS PART OF THE FUTURE ENTRANCE AREA IMPROVEMENTS.
4	Zelkova / Zelkova serrata	28"	NO	GOOD	PRUNE DEAD LIMBS. RECOMMEND ARBORIST ASSESS FOR HEALTH AND TREAT AS NEEDED. VISIBLE BARK LOSS. VERY NICE TREE WORTH SAVING.
5	Arborvitaes / Thuja	2"	YES	POOR	REMOVE ALL PLANTS ON THE EAST SIDE OF WALK. POOR CONDITION. UNATTRACTIVE.
6	Arborvitaes / Thuja	2"	NO	FAIR	THESE TREES ARE PROVIDING ADEQUATE SREENING. THIS TREE WILL BE ASSESSED AGAIN AS PART OF THE PARKING LOT IMPROVEMENTS STUDIES.
7	Magnolia / Magnolia stellata	5"	NO	GOOD	PRUNE DEAD LIMBS. LOW PRIORITY. THIS TREE WILL BE ASSESSED AGAIN AS PART OF THE PARKING LOT IMPROVEMENTS STUDIES.
8	Pin Oak / Quercus palustris	44"	NO	GOOD	PRUNE DEAD LIMBS. LOW PRIORITY. THIS TREE WILL BE ASSESSED AGAIN AS PART OF THE PARKING LOT IMPROVEMENTS STUDIES.
9	Red Oak / Quercus robur	30"	NO	GOOD	PRUNE OVERHANGING LIMBS.
10	Norway Maple / Acer platanoides	22"	NO	FAIR	REMOVE/PRUNE DEAD CENTER LEADER. THIS TREE WILL BE ASSESSED AGAIN AS PART OF THE PARKING LOT IMPROVEMENTS STUDIES.
11	Norway Maple / Acer platanoides	12"	NO	FAIR	PRUNE DEAD LIMBS. LOW PRIORITY. THIS TREE WILL BE ASSESSED AGAIN AS PART OF THE PARKING LOT IMPROVEMENTS STUDIES.
12	Norway Maple / Acer platanoides	15"	NO	GOOD	PRUNE DEAD LIMBS. LOW PRIORITY. THIS TREE WILL BE ASSESSED AGAIN AS PART OF THE PARKING LOT IMPROVEMENTS STUDIES.
13	Norway Maple / Acer platanoides	20"	NO	GOOD	PRUNE DEAD LIMBS. LOW PRIORITY. THIS TREE WILL BE ASSESSED AGAIN AS PART OF THE PARKING LOT IMPROVEMENTS STUDIES.
14	Norway Maple / Acer platanoides	28"	NO	GOOD	PRUNE DEAD LIMBS. LOW PRIORITY. THIS TREE WILL BE ASSESSED AGAIN AS PART OF THE PARKING LOT IMPROVEMENTS STUDIES.
15	Norway Maple / Acer platanoides	22"	NO	GOOD	PRUNE DEAD LIMBS. LOW PRIORITY. THIS TREE WILL BE ASSESSED AGAIN AS PART OF THE PARKING LOT IMPROVEMENTS STUDIES.
16	Norway Maple / Acer platanoides	24"	NO	GOOD/FAIR	PRUNE DEAD LIMBS. LOW PRIORITY. THIS TREE WILL BE ASSESSED AGAIN AS PART OF THE PARKING LOT IMPROVEMENTS STUDIES.
17	Elm /Ulmus species	20"	NO	GOOD/FAIR	PRUNE DEAD LIMBS. LOW PRIORITY. THIS TREE WILL BE ASSESSED AGAIN AS PART OF THE PARKING LOT IMPROVEMENTS STUDIES.
18	Norway Maple / Acer platanoides	20"	YES	FAIR/POOR	REMOVE TREE IN TRASH ENCLOSURE AREA.
19	Norway Maple / Acer platanoides	16", 14", 19"	NO	GOOD FAIR	PRUNE DEAD LIMBS. LOW PRIORITY. THIS TREE WILL BE ASSESSED AGAIN AS PART OF THE PARKING LOT IMPROVEMENTS STUDIES.
20	Norway Maple / Acer platanoides	22"	NO	GOOD	PRUNE OVERHANGING LIMBS. EXTENSIVE ROOT SYSTEM THAT MAY BE DAMAGING NEIGHBORING FOUNDATION. FUTURE REMOVAL.
21	Choke Cherry / Prunus virginiana	16"	YES	POOR	CROWN DIEBACK. REMOVE TREE.
22	Red Oak / Quercus robur	20"	NO	GOOD	PRUNE OVERHANGING & DEAD LIMBS.
23	Sugar Maple / Acer saccharinum	42"	NO	GOOD/FAIR	PRUNE DEAD LIMBS.
24	Red Oak / Quercus robur	22"	NO	GOOD	PRUNE DEAD LIMBS.
25	Choke Cherry / Prunus virginiana	13"	YES	POOR	CROWN DIEBACK. REMOVE TREE.
26	Choke Cherry / Prunus virginiana	19"	YES	POOR	CROWN DIEBACK. REMOVE TREE.
27	Choke Cherry / Prunus virginiana	19"	YES	POOR	CROWN DIEBACK. REMOVE TREE.
28	Choke Cherry / Prunus virginiana	22"	YES	POOR	VISIBLE SIGNS OF DISEASE, DECAY & DECLINE. REMOVE TREE.
29	Kousa Dogwood / Cornus kousa	16"	NO	GOOD	SELECTIVELY PRUNE LIMBS AS REQUIRED. LOW PRIORITY.
30	White Pine / Pinus strobus	16"	NO	GOOD	SELECTIVELY PRUNE LIMBS AS REQUIRED. LOW PRIORITY.
31	White Pine / Pinus strobus	12"	NO	GOOD	SELECTIVELY PRUNE LIMBS AS REQUIRED. LOW PRIORITY.
32	Cherry / Prunus species	20"	YES	POOR	EXTENSIVE VISIBLE DECAY & ROT. REMOVE TREE.
33	Kousa Dogwood / Cornus kousa	16"	NO	FAIR	SELECTIVELY PRUNE LIMBS AS REQUIRED. LOW PRIORITY.
34	Spruce / Picea species	12"	YES	FAIR/POOR	PLANTED TOO CLOSE TO BUILDING. REMOVE TREE.
35	White Pine / Pinus strobus	11"	YES	POOR	REMOVE TREE.
36	White Pine / Pinus strobus	17"	NO	GOOD	SELECTIVELY PRUNE LIMBS AS REQUIRED.
37	White Pine / Pinus strobus	10"	YES	POOR	REMOVE TREE.
38	Black Walnut / Carya nigra	22"	NO	GOOD	SELECTIVELY PRUNE LIMBS AS REQUIRED. NICE TREE.
39	Malus / Crab Apple	16"	NO	GOOD/FAIR	THIS TREE APPEARS HEALTHY.
40	Malus / Crab Apple	20"	YES	POOR	DEAD TREE. REMOVE.
41	Kousa Dogwood / Cornus kousa	20"	NO	GOOD	SELECTIVELY PRUNE LIMBS AS REQUIRED. NICE TREE.
42	Kousa Dogwood / Cornus kousa	20"	NO	GOOD	SELECTIVELY PRUNE LIMBS AS REQUIRED. NICE TREE.
43	Sugar Maple / Acer saccharinum	13"	YES	FAIR/POOR	VISIBLE SIGNS OF DISEASE, DECAY & DECLINE. REMOVE TREE.
44	Sugar Maple / Acer saccharinum	14"	YES	FAIR/POOR	VISIBLE SIGNS OF DISEASE, DECAY & DECLINE. REMOVE TREE.
45	Sugar Maple / Acer saccharinum	22"	YES	FAIR/POOR	VISIBLE SIGNS OF DISEASE, DECAY & DECLINE. REMOVE TREE.
46	Magnolia / Magnolia species	11"	NO	GOOD	SELECTIVELY PRUNE LIMBS AS REQUIRED.
47	Magnolia / Magnolia species	10"	NO	GOOD	SELECTIVELY PRUNE LIMBS AS REQUIRED.
48	Cherry / Prunus species	12"	YES	POOR	VISIBLE SIGNS OF DISEASE & DECAY. REMOVE TREE.

SECTION 1. LIST OF TALL YEWS				SECTION 2. CONDITION	SECTION 3. NOTES/RECOMMENDATIONS
Tree #	Common Name / Genus-Species	SIZE	REMOVED		
1	Capitata Yew	15'	NO	GOOD	NICE LOOKING PLANT. ASSESS AGAIN AFTER TREE REMOVAL WORK AND FUTURE IMPROVEMENTS PLANS.
2	Capitata Yew	12'	NO	GOOD/FAIR	ASSESS AGAIN AFTER TREE REMOVAL WORK AND FUTURE IMPROVEMENTS PLANS.
3	Capitata Yew	10'	NO	GOOD/FAIR	ASSESS AGAIN AFTER TREE REMOVAL WORK AND FUTURE IMPROVEMENTS PLANS.
4	Capitata Yew	10'	NO	GOOD	ASSESS AGAIN AFTER TREE REMOVAL WORK AND FUTURE IMPROVEMENTS PLANS.
5	Capitata Yew	10'	NO	GOOD	RETAIN AS PART OF EVERGREEN PLANT SCREEN AT POOL ENCLOSURE WALL.
6	Capitata Yew	10'	NO	GOOD	RETAIN AS PART OF EVERGREEN PLANT SCREEN AT POOL ENCLOSURE WALL.
7	Capitata Yew	10'	NO	GOOD	RETAIN AS PART OF EVERGREEN PLANT SCREEN AT POOL ENCLOSURE WALL.
8	Capitata Yew	6'	YES	POOR	DEAD. REMOVE.
9	Capitata Yew	9'	YES	POOR	REMOVE.
10	Capitata Yew	10'	YES	POOR	REMOVE.
11	Capitata Yew	11'	NO	GOOD	ASSESS AGAIN AFTER TREE REMOVAL WORK AND FUTURE IMPROVEMENTS PLANS.
12	Capitata Yew	12'	NO	GOOD	ASSESS AGAIN AFTER TREE REMOVAL WORK AND FUTURE IMPROVEMENTS PLANS.