

RESILIENT MOAKLEY PARK

NOVEMBER MEETINGS WHAT WE HEARD



01.15.2026
Boston Parks and Recreation




FEEDBACK, IN-PERSON

~55 ATTENDEES



MOAKLEY PARK INTERACTIVE STATIONS




ATHLETICS

Having pickleball and tennis near each other fosters great intergenerational relationships

Please build a skate park on Day Blvd side near the police station! Accessible by T. Noise not an issue!

New lighting would allow us to play for longer; right now have to rely on the sun



ACCESS & AMENITIES



The tennis courts are well-loved now- can we add more for the future Moakley Park?

I'd like to see concessions with clean bathrooms

I hope they put in a water feature, preferably a pool. Like surrounding towns have and if not a pool, and actual working splash pad

How can we have pollinators throughout the park?

The park sidewalks are not well maintained and at parts feel unsafe, especially for the elderly



Interpreter EN-SP...	Joe Christo - he, h...	Kathy Abbott	Carlos A. (Spanish...	Vicky Shen
Philip Paul	Michael Sheehan	Sarah White	Jacob Downey	Miguel H.

MERRY MOAKLEY



MAKE MOAKLEY...



WHAT KIND OF MOAKLY PARK ARE YOU EXCITED FOR?

"Eco-Forest, Play-Restore, Gardens"

"Plenty of Pollinator Plants, Sustainable in Coastal Environment"

"Addressing Climate Change"

"Coastal Resiliency"

"A park that promotes a healthier lifestyle"

"Community partnership"

"1. Outdoor sports (first place), 2. Flood control (necessary), 3. Play area + playground"

SUMMARY

CONSENSUS

- Broad agreement on the location of the landscape berm and its integration into the park landscape
- Full support for the sports fields layout and turf recommendations

ADDITIONAL FEEDBACK

- Focus groups will be held for 2 reasons:
 - To receive more targeted input on smaller areas within the park
 - To actively reach out to park users that were underrepresented at the community meetings



SUMMARY

ATHLETICS

- Consensus on acceptance of proposal for mix of synthetic + natural turf fields
- Additional focus group feedback required for relationship + number of sport courts (pickleball/basketball/tennis)

PLAY

- Excitement around multigenerational spaces (swings, yard games, etc) + spaces where parents can drop older kids off at athletics but be nearby with younger kids in a play area
- Desire for shaded play elements
- Additional focus group feedback required from family groups

WHAT COURT LAYOUT DO YOU PREFER?

PROPOSAL 1



5 Votes

PROPOSAL 2



5 Votes

PROPOSAL 3



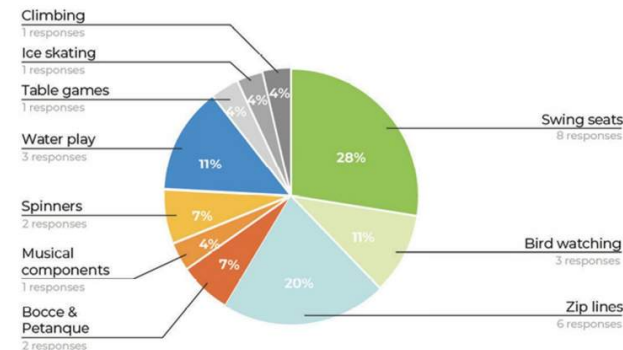
2 Votes

PROPOSAL 4



2 Votes

WHAT PROGRAM DO YOU WANT TO SEE?



SUMMARY

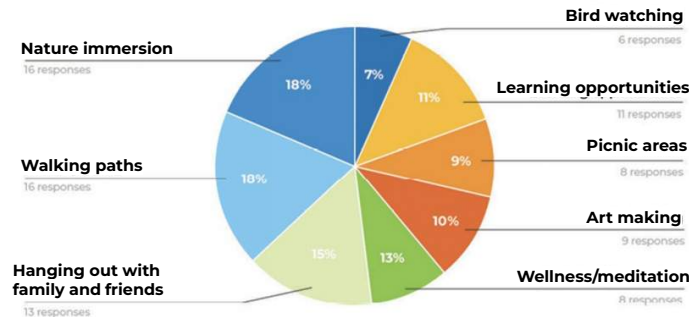
COASTAL LANDSCAPE

- High interest in immersion into nature, walking paths, + spaces to hang out with family + friends
- Comments to think about educational opportunities

WATERFRONT PLAZA

- Participants interested in an amphitheater space that has a natural form + something that will feel part of the landscape while being distinct to South Boston
- Opportunity to review further feedback in focus groups

WHAT PROGRAM DO YOU WANT TO SEE?

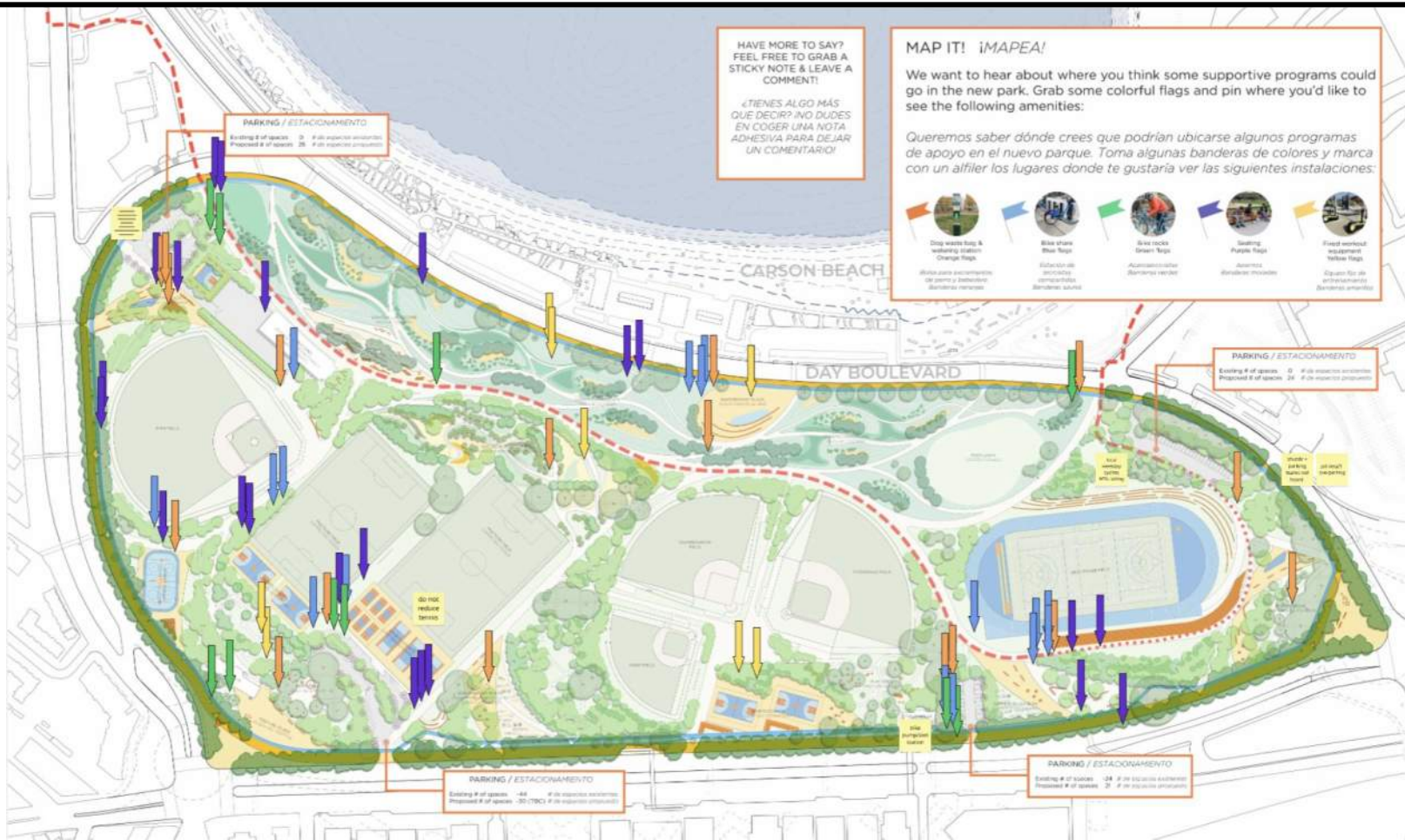


NATURAL



9 Votes

- "The word 'natural' says it all"
- "The look blends into the beach + surrounding area"
- "Fun space for all ages"
- "Better fit in community feel"
- "The rock groupings look lovely as the blend with the berm"



SUMMARY

BIKE INFRASTRUCTURE



- Desire to have bike parking and repair stations consolidated near vehicular parking and major program areas

EXERCISE EQUIPMENT



- Potential to distribute along the city edge or cluster near athletic amenities

DOG AMENITIES



- Dog stations at city edge and major crossroads at park interior

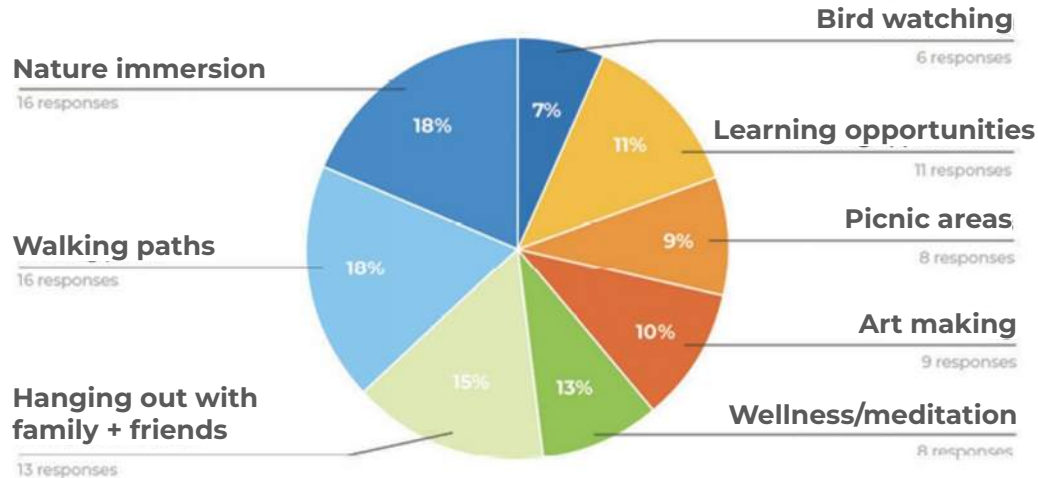
SEATING



- Seating opportunities desired near major programming areas with clear sight lines
- Shaded areas

COASTAL LANDSCAPE

WHAT PROGRAM DO YOU WANT TO SEE?



EDUCATION

2 comments

"It would also be cool if learning opportunities were **more interactive beyond just signs!**"

"Kids play with nature" - Sand and informal instructional play - Outdoor classroom - Play-based and accessible for people with disabilities"

WATERFRONT PLAZA

LINEAR



"Mix of lawn space & seating"

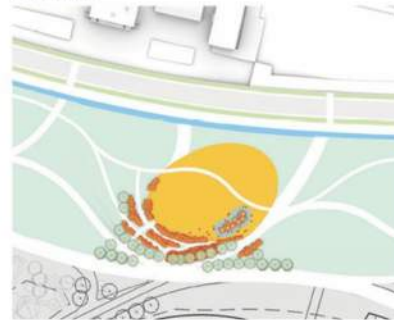
"Combination of lawn and rock in a simple and easily accessible way"

"More specifically tailored to the use, will be more top of mind when planning events"

"Neat lines"

5 Votes

BLOCKY



"More natural, less concrete"

"Best of both worlds"

"Space for seating + blankets. Looks very sleek"

"Ability to use found materials"

"Natural materials"

6 Votes

NATURAL



"The word 'natural' says it all"

"The look blends into the beach + surrounding area"

"Fun space for all ages"

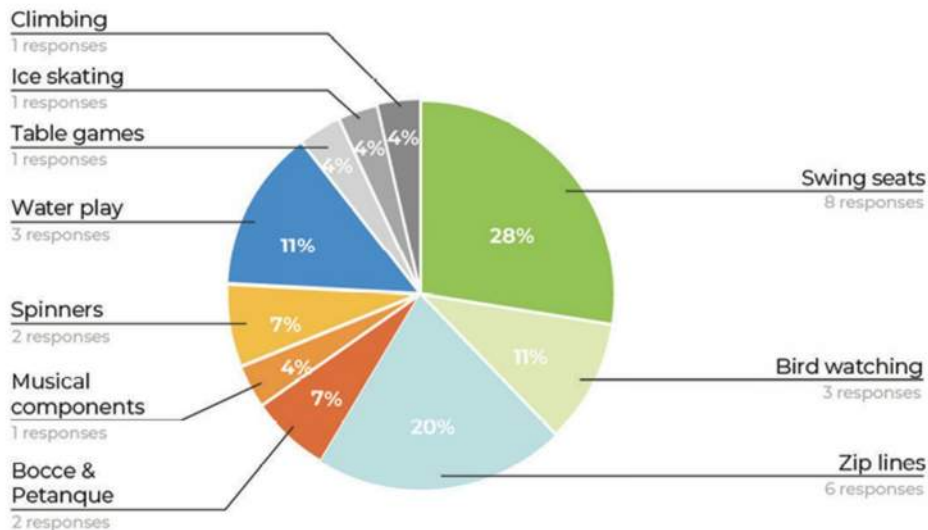
"Better fit in community feel"

"The rock groupings look lovely as the blend with the berm"

9 Votes

PLAY

WHAT PROGRAM DO YOU WANT TO SEE?



EDUCATION

4 comments

"**Studio Ludo** is an example of science based playground design that mixes educational and play spaces to discuss climate resiliency"

"Can we **integrate the nature play with the coastal landscape** across the berm? There are educational opportunities for science classes or Audobon Society like programming that is directly in nature."

"Water features where kids can **interact with and alter water flow** are popular and a good learning tool."



PLAYGROUND AMENITIES

4 comments

"**Fences for all playgrounds!**"

"**Stroller parking** (near existing field house + play area)"

"If we need parking, I think it should be located near the younger children's play areas."



MULTI-USE PLAY

4 comments

"Liked that the plans are devoting space to different types of play"

"Parents want to be able to have immediate **access between sport fields and play grounds**, many times kids will transition directly from sports to play, and often parents have one child playing in the fields while they also have a child at a different age on the playground"

"Multigenerational play is important and should be focused on (also for kids of different ages to be able to share space)"

ATHLETICS

WHAT COURT LAYOUT DO YOU PREFER?

PROPOSAL 1



5 Votes

PROPOSAL 2



5 Votes

PROPOSAL 3



2 Votes

PROPOSAL 4



2 Votes



BASKETBALL

4 comments

"I think it's important to have **as many basketball courts as possible**, as they are a **very important resource for the neighboring community**."

"North / South orientation is important - Make sure enough room between basketball and soccer"



RACKET SPORTS

3 comments

"**Please add more tennis courts**. Also, how will the scheduling for the use of the fields be handled? (Four tennis courts are better than three!)"

"Near-by tennis courts at MEM (Divine Way) are getting removed, would like to see more at Moakley"

ATHLETICS



OTHER RECREATION

12 comments

"What is the size of the skate plaza? I also wonder what obstacles would be featured there. There should be a **community event to make a correct design.**"

"Skatepark would be the only plaza within about a **5 mile radius..** It should be correctly sized to accommodate its user and meet a **wide range of skill levels.**"

"There should be a balance of plants and skating space"



ATHLETIC SURFACES

6 comments

"How much **versatility** is within the planned fields? For example as needs change how does it adapt?"

"I am in strong support of natural surface. I think it is very important that Moakley Park be a **true green space** as much as possible."

"I appreciate that synthetic allows for more use throughout the year."