

A photograph of the Penniman Road Play Area, featuring two large, colorful play structures with slides and climbing equipment. The structures are made of blue and red plastic and metal. The ground is covered in dark rubber safety matting. In the background, there are residential buildings and bare trees, suggesting a winter or early spring setting. The sky is overcast.

Improvements to **PENNIMAN ROAD PLAY AREA**



MEETING RECORDING



The Boston Parks and Recreation Department will be recording the meeting and posting to our project webpage for those who are unable to attend the Zoom meeting live.

It is possible that participants may also be recording the meeting with their phones cameras or other devices. If you do not wish to be recorded during this meeting, please keep your microphone muted and camera off.

*Please share with your neighbors and friends:
boston.gov/penniman-road-play*

MEETING ETIQUETTE

We want to ensure this conversation is a pleasant experience for all and that all community members/stakeholders are comfortable sharing their comments, questions and feedback.

Please be respectful and mindful of each other's time when asking questions/ providing comments, so that all attendees are able to participate in the meeting.

Keep questions/ comments project-specific and not personal to yield solution-driven discussion.

Please wait until all attendees have had the opportunity to ask a question/ provide a comment before providing additional questions/ comments.

*You can always set up a conversation with **Max Sell**, max.sell@Boston.gov, to further discuss the project or process.*

ZOOM TIPS

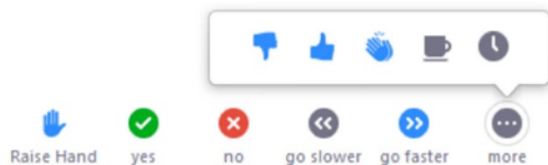
Here is how you can participate during the question and answer part of the presentation.

DURING THE PRESENTATION:



VIA WEB:

Turn video on / off.



To use these non-verbal options click on participants (bottom of screen); these options will pop up in side bar.

FEEDBACK:

Please note that chat will be disabled for the meeting. Please share your feedback through the survey link available at the end of the presentation.

AGENDA

1

PROJECT OVERVIEW

2

WHAT WE HEARD - COMMUNITY MEETING 1

3

DESIGN CONCEPTS

4

TEAM LISTENING & COMMUNITY DISCUSSION

PROJECT OVERVIEW



PROJECT TEAM

Max Sell

Project Manager

max.sell@boston.gov or 617-961-3097

Jennifer Roberts

Allston-Brighton Liaison,
Office of Neighborhood Services

jennifer.roberts@boston.gov or 617-635-4517

My'Kel McMillen

Outreach Coordinator, External Affairs

corey.mcmillen@boston.gov or 617-201-1294

Kaki Martin, Principal

Jennifer Ng, Senior Associate

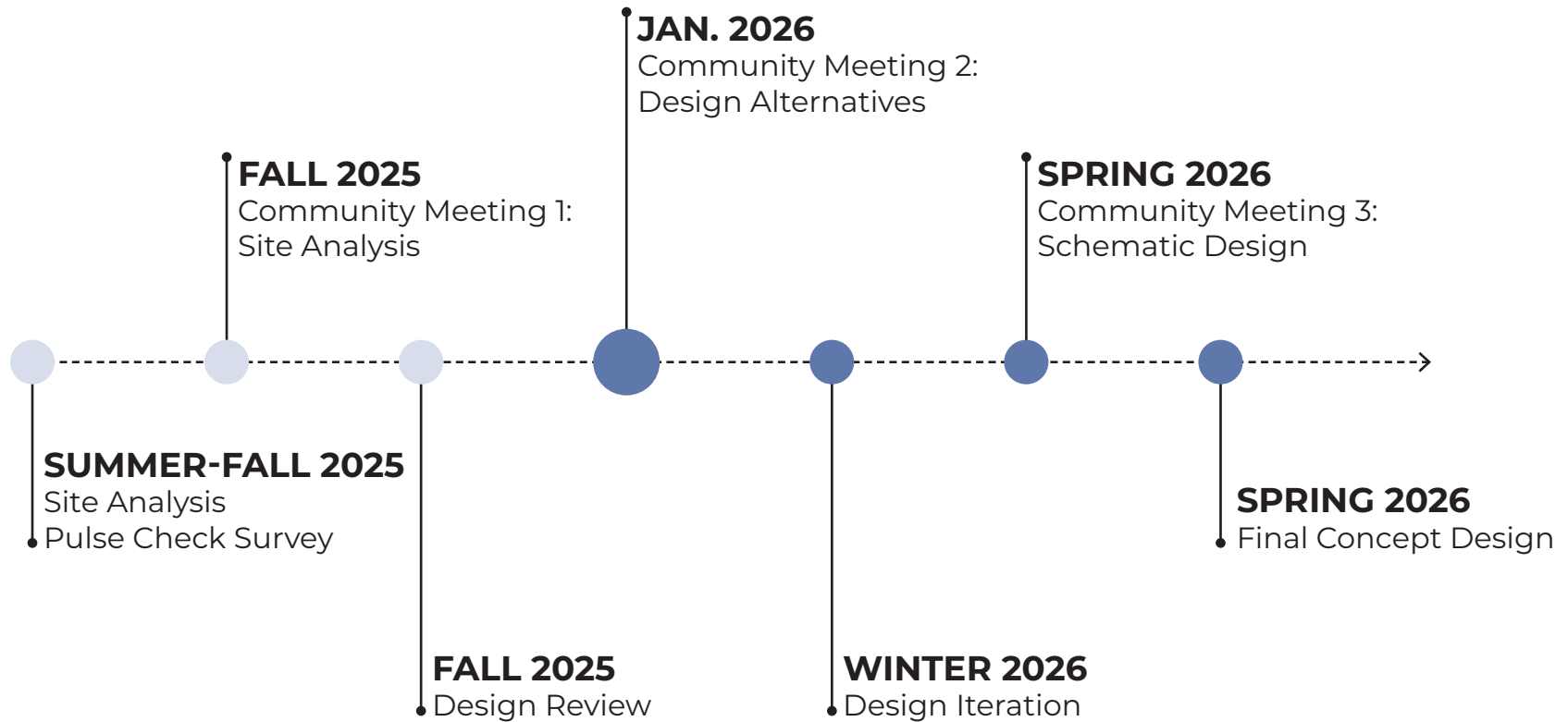
Melita Schmeckpeper, Landscape Architect

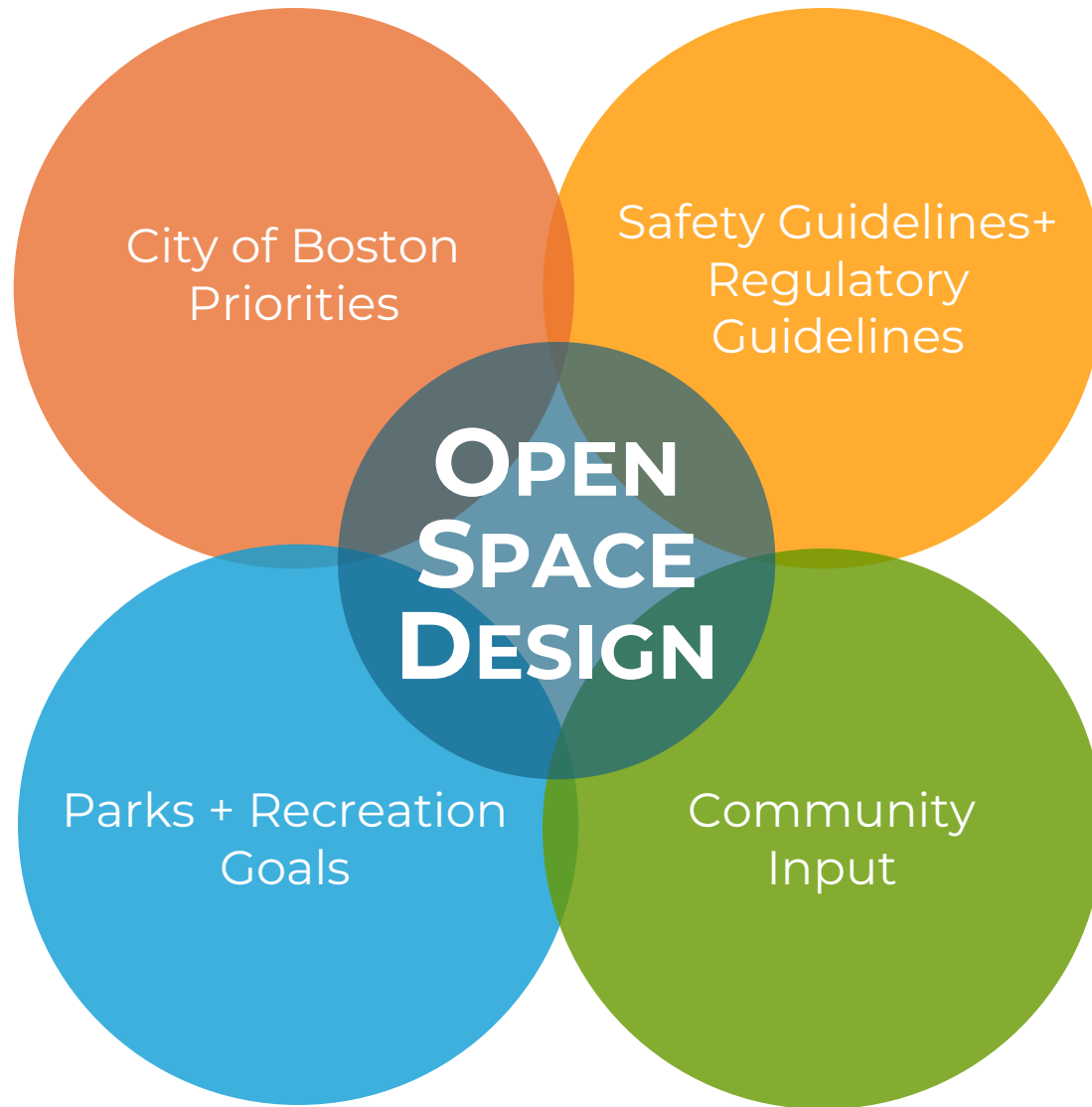
Hannah Hardenbergh, Landscape Designer

Klopfer Martin Design Group



PROJECT SCHEDULE





WHAT WE HEARD

COMMUNITY MEETING 1

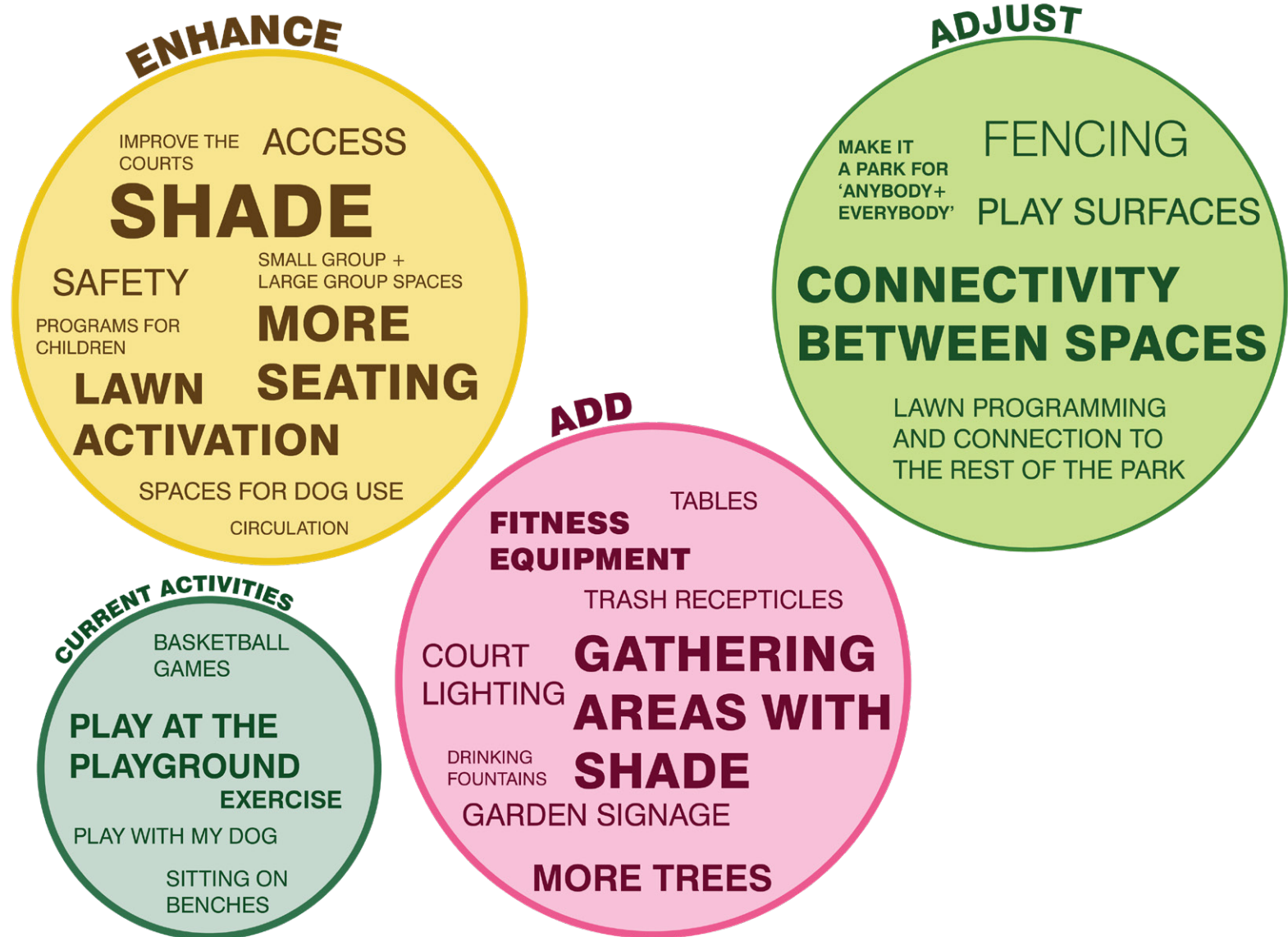
JAS-ONS
GLEN

BERNIE

COMMUNITY MEETING 1 FEEDBACK

What do you do at the Park? Which improvements would you like to see?

Note: Comments included from both Meeting Discussion and Survey Responses.



COMMUNITY GARDENERS FOLLOW-UP SESSION:



WE HEARD...

"We prefer a **single access gate** from Penniman Road."

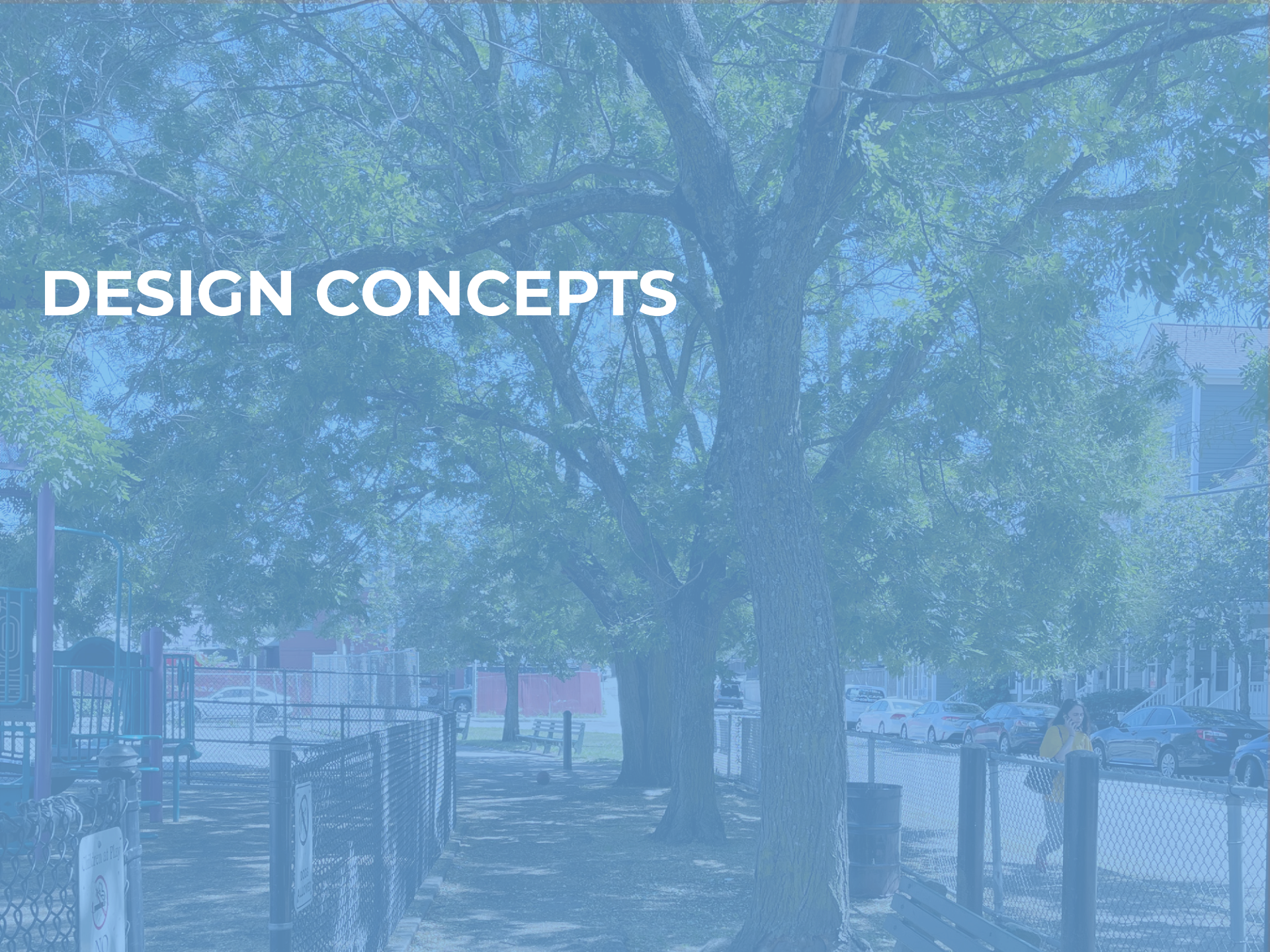
"Basketball court is a **“good neighbor”** - we enjoy the relationship with kids who play at the court."

"The lawn area is more sunny and the canopy tree is **shading out** some of the community garden plots."

"Right now there's not a lot of community activation in the lawn, **it feels hot** and the planting does not give much shade."



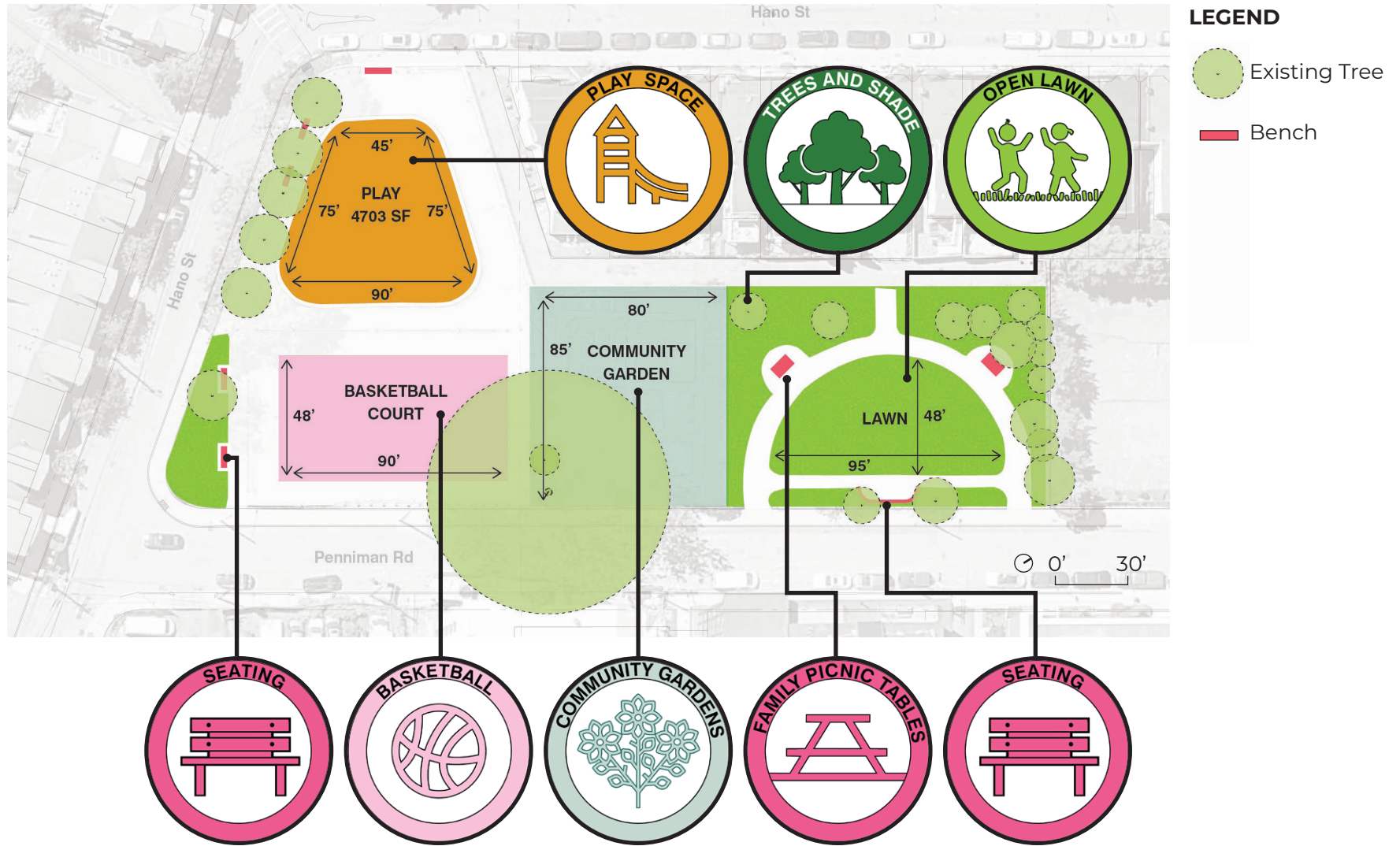
DESIGN CONCEPTS



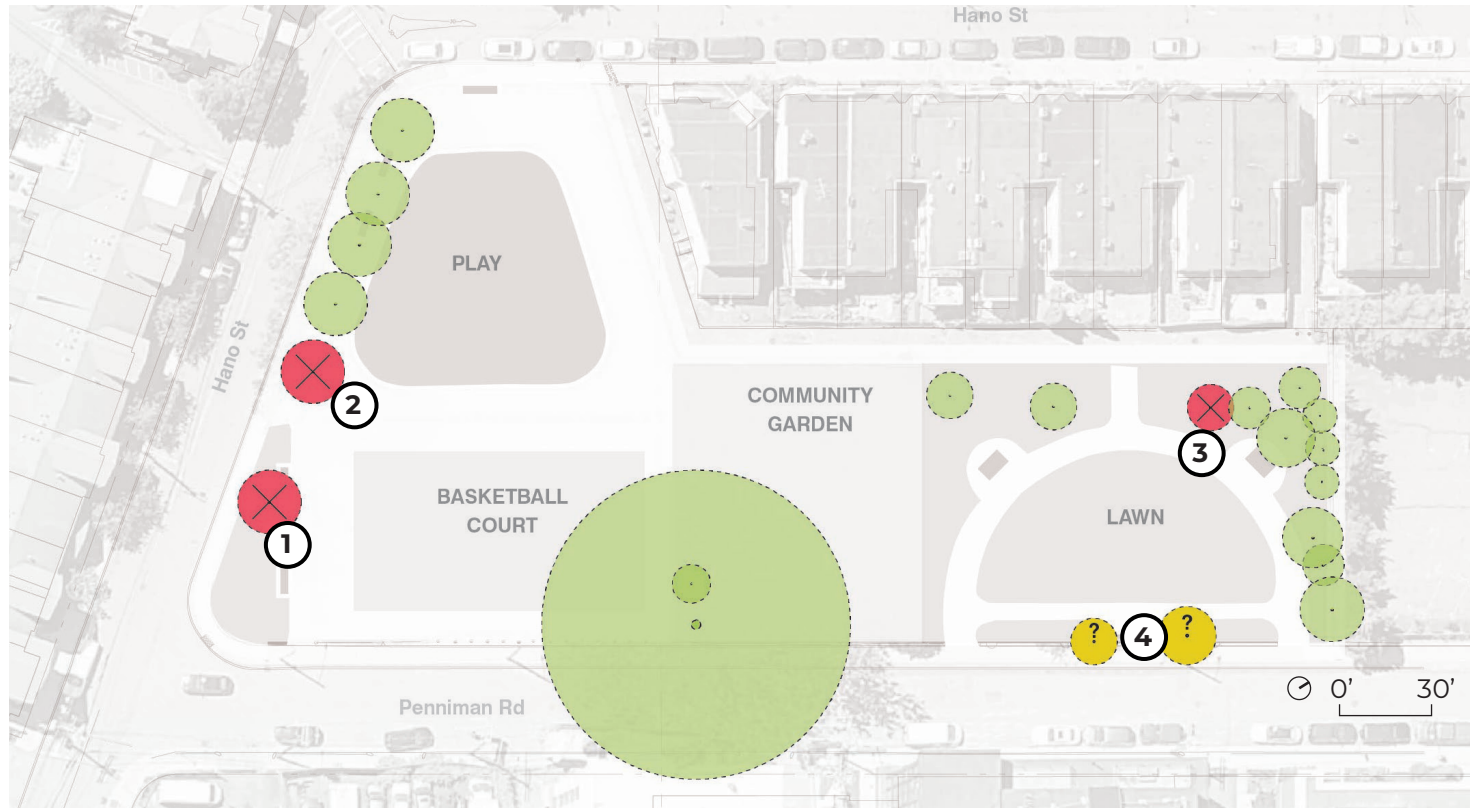
PROJECT GOALS

1. Maximize **multi-generational** play and gathering.
2. Create smooth transition between programs.
3. Provide **more seating** and **shaded gathering areas**.
4. **Activate the lawn** area and integrate the lawn with the overall park experience.
5. Increase play value at the playground and **maximize play opportunities**.
6. Improve **basketball court** and increase seating for viewing.
7. Maintain and protect **existing trees** and design for the **next generation of tree canopy**.




EXISTING AMENITIES



TREE SURVEY AND WARDEN RECOMMENDATIONS



LEGEND

-  Protect
-  Remove
(Poor health or dead)
-  Possibly Remove
(High maintenance and poor health. Design schemes provide options to remove one, remove both, or keep & maintain both)



**LINDEN TREE
(REMOVE)**



**JAPANESE PAGODA TREE
(REMOVE)**

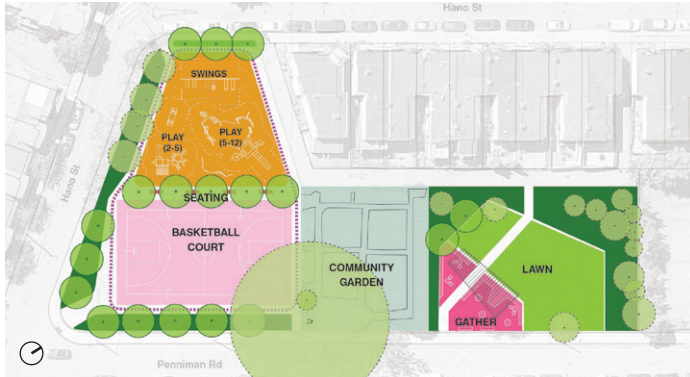


**WHITE SPRUCE TREE
(REMOVE)**



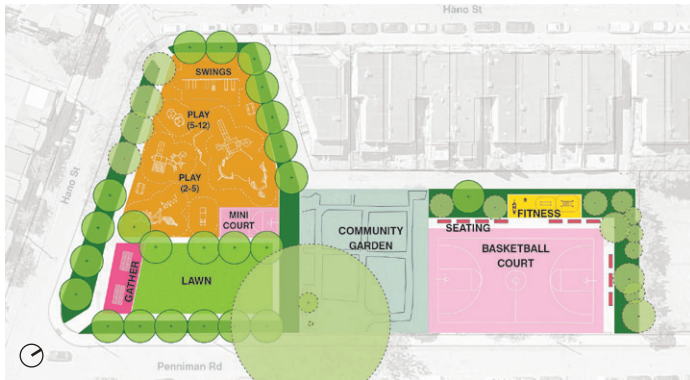
**CRABAPPLE TREES (2)
(POSSIBLY REMOVE)**

CONCEPT OVERVIEW



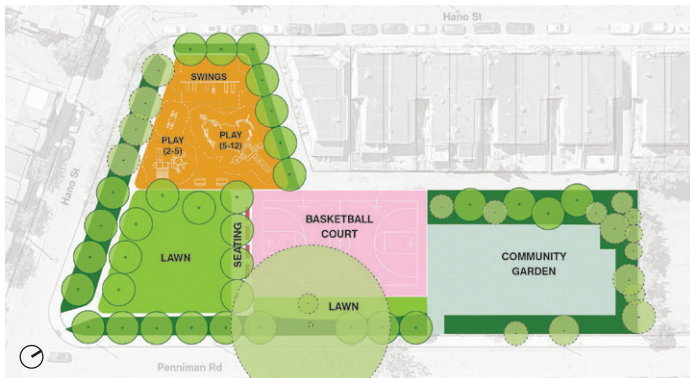
CONCEPT 1: REFRESH

- **Simple refinements** to what's already there



CONCEPT 2: TRADE

- **Swap** locations of basketball court and lawn



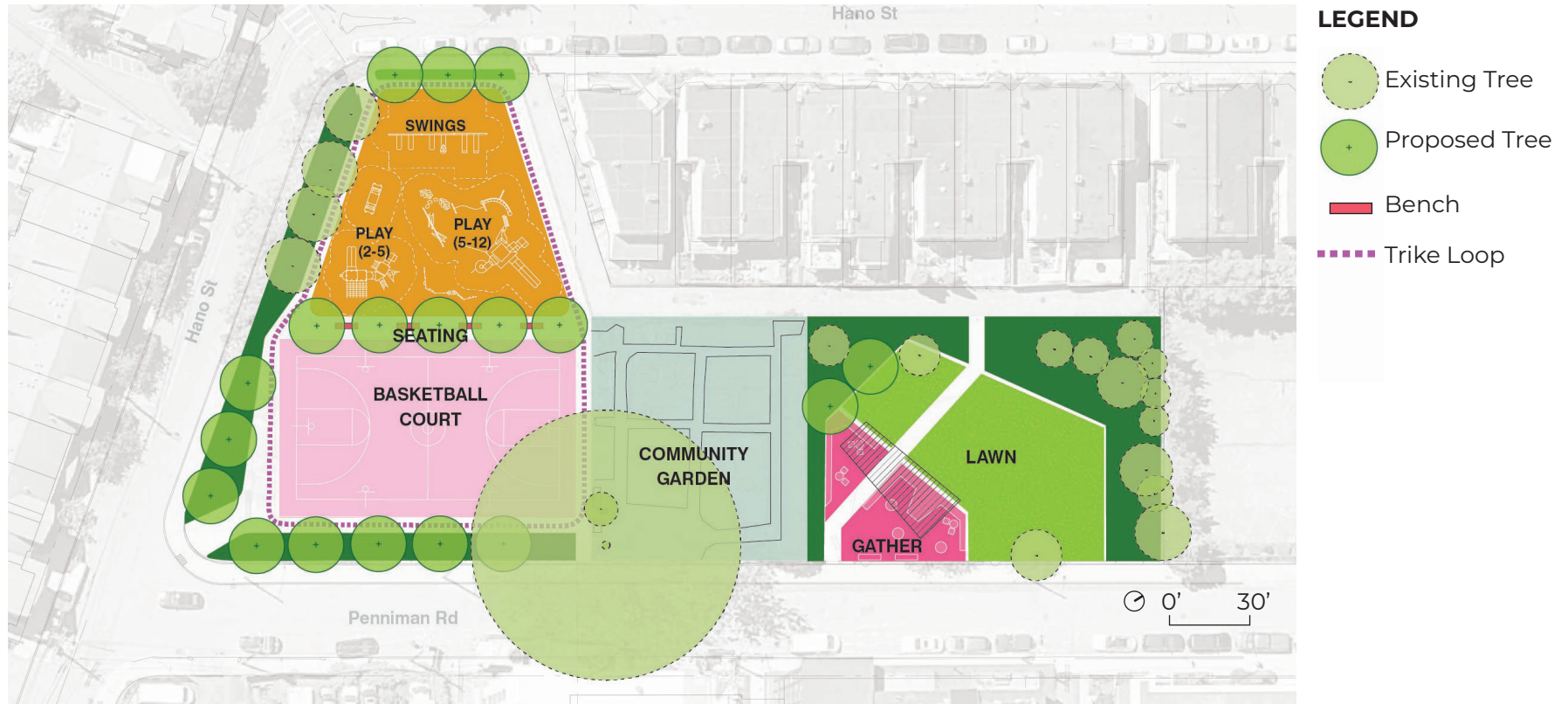
CONCEPT 3: SHUFFLE

- **Relocate** community garden to **unify** the park

ALL THREE OPTIONS...

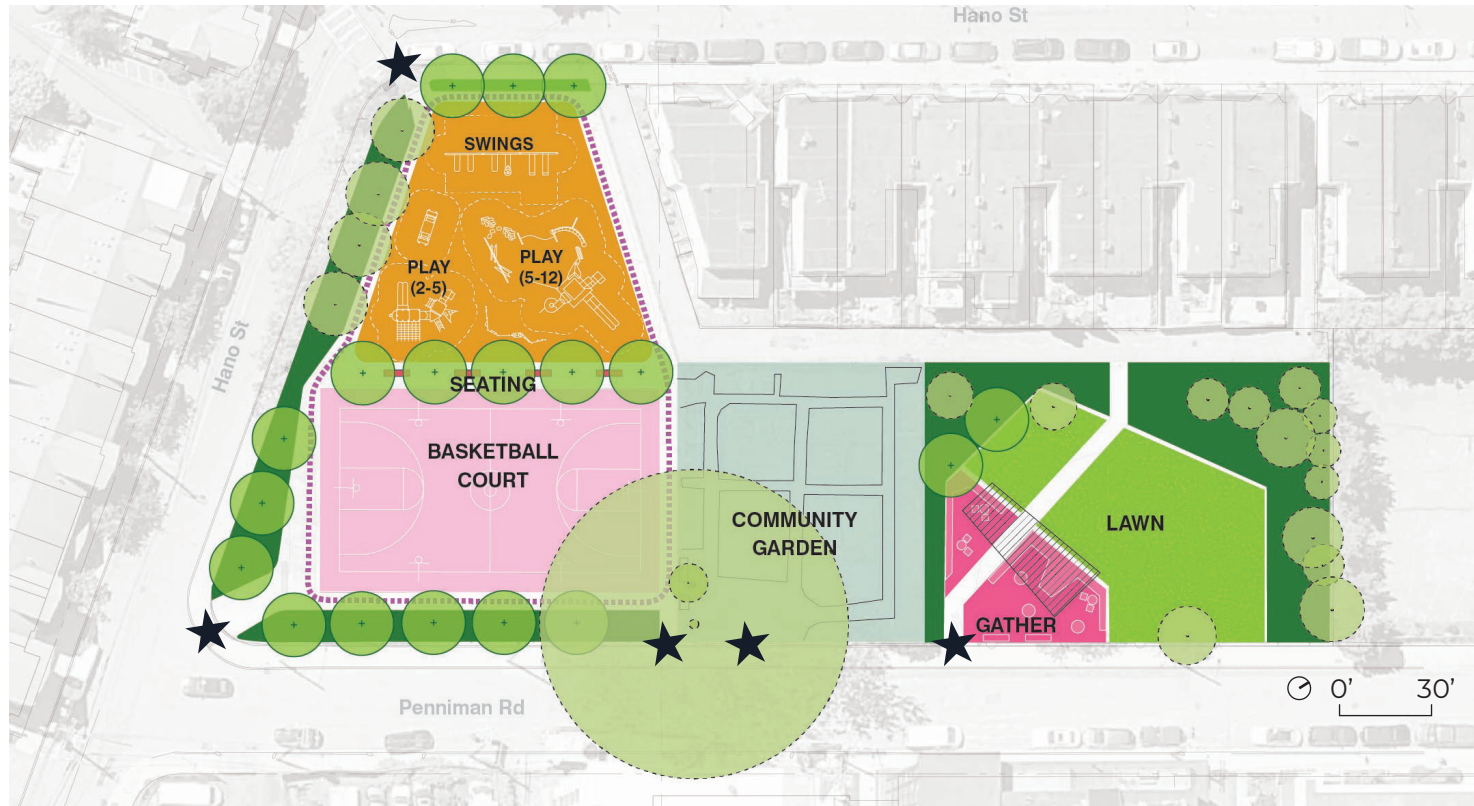
- Maintain all healthy existing trees.
- Add new trees to shade play and gathering areas.
- Maintain or increase size of play area.
- Maintain size of community garden.
- Shift vehicular access to the alley, removing the dedicated driveway along the north edge of the playground.
- Reduce the amount of paved surfaces.

CONCEPT 1: REFRESH | OVERALL PLAN



- **Simple refinements** to what's already there.
- Green and shaded park entrance at Penniman Rd.
- Large gathering space for gardeners and community activities.
- Option for trike loop.

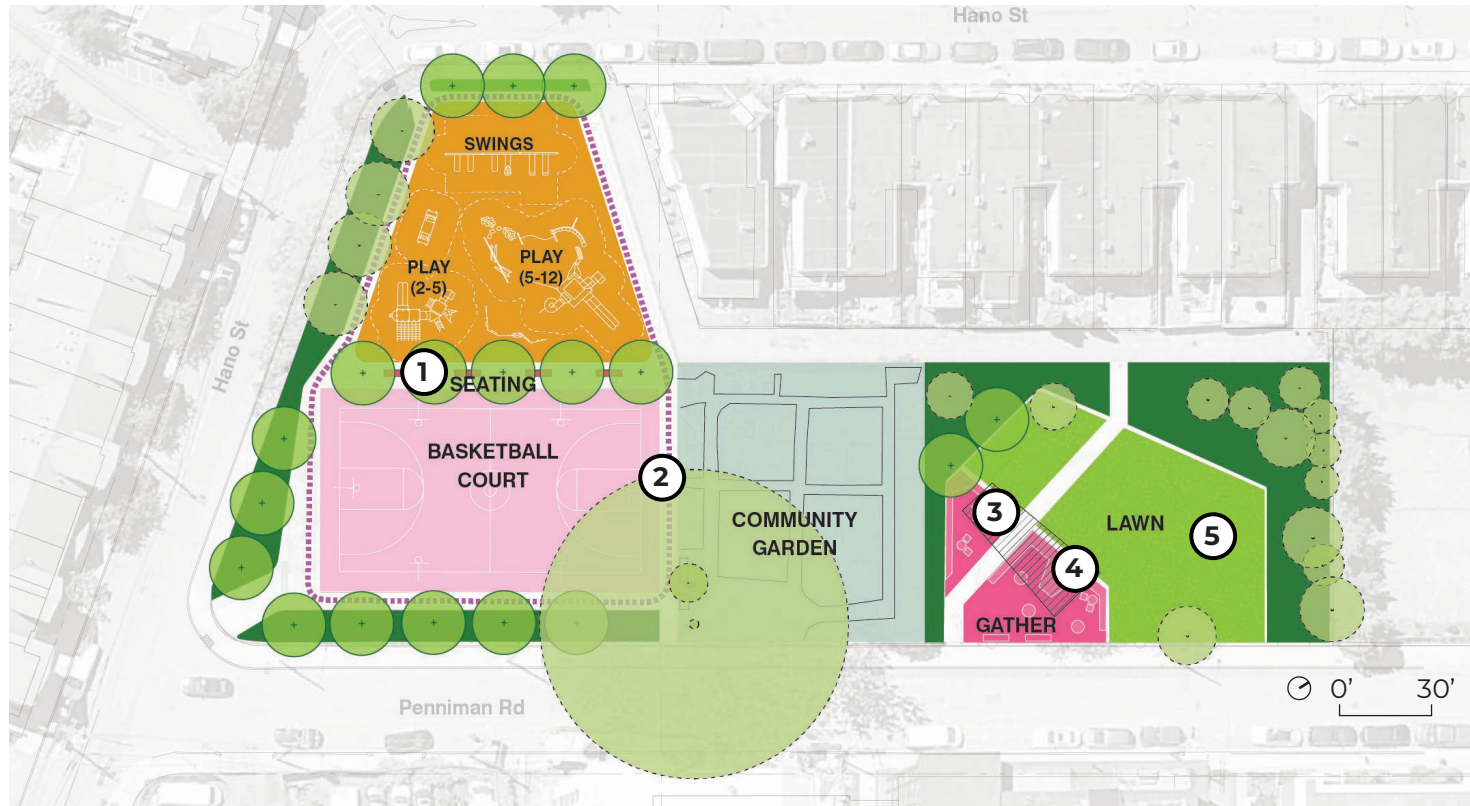
CONCEPT 1: REFRESH | OVERALL PLAN







LEGEND

- Existing Tree
- Proposed Tree
- Bench
- Trike Loop
- Park Entrances

CONCEPT 1: REFRESH | PRECEDENTS



LEGEND

-  Existing Tree
-  Proposed Tree
-  Bench
-  Trike Loop



**TREE ROW
AND SEATING**



**TRIKE LOOP AND
BASKETBALL COURT**



SHADE STRUCTURE

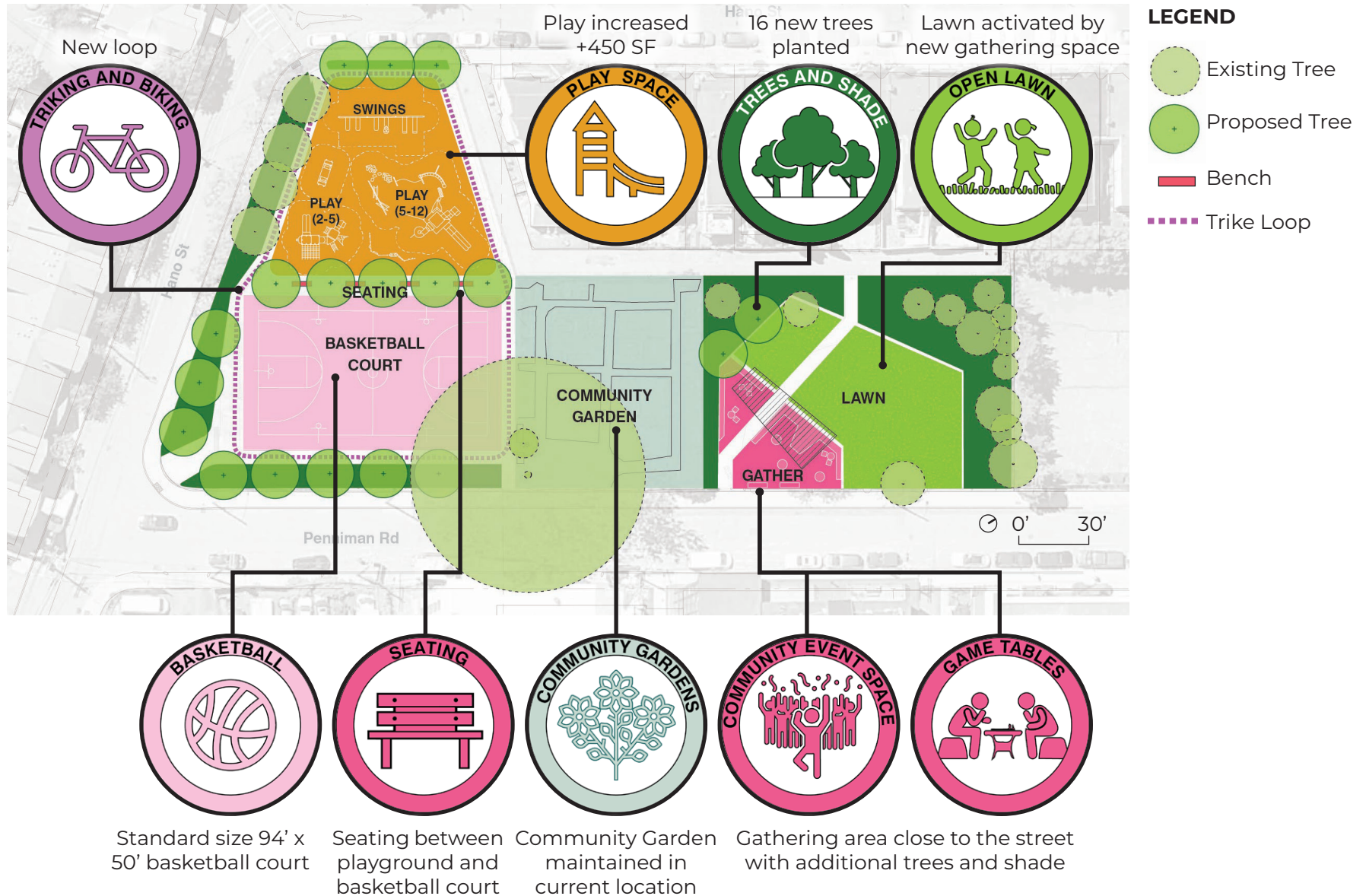


**SCULPTURAL SEATING
AND GAME TABLES**

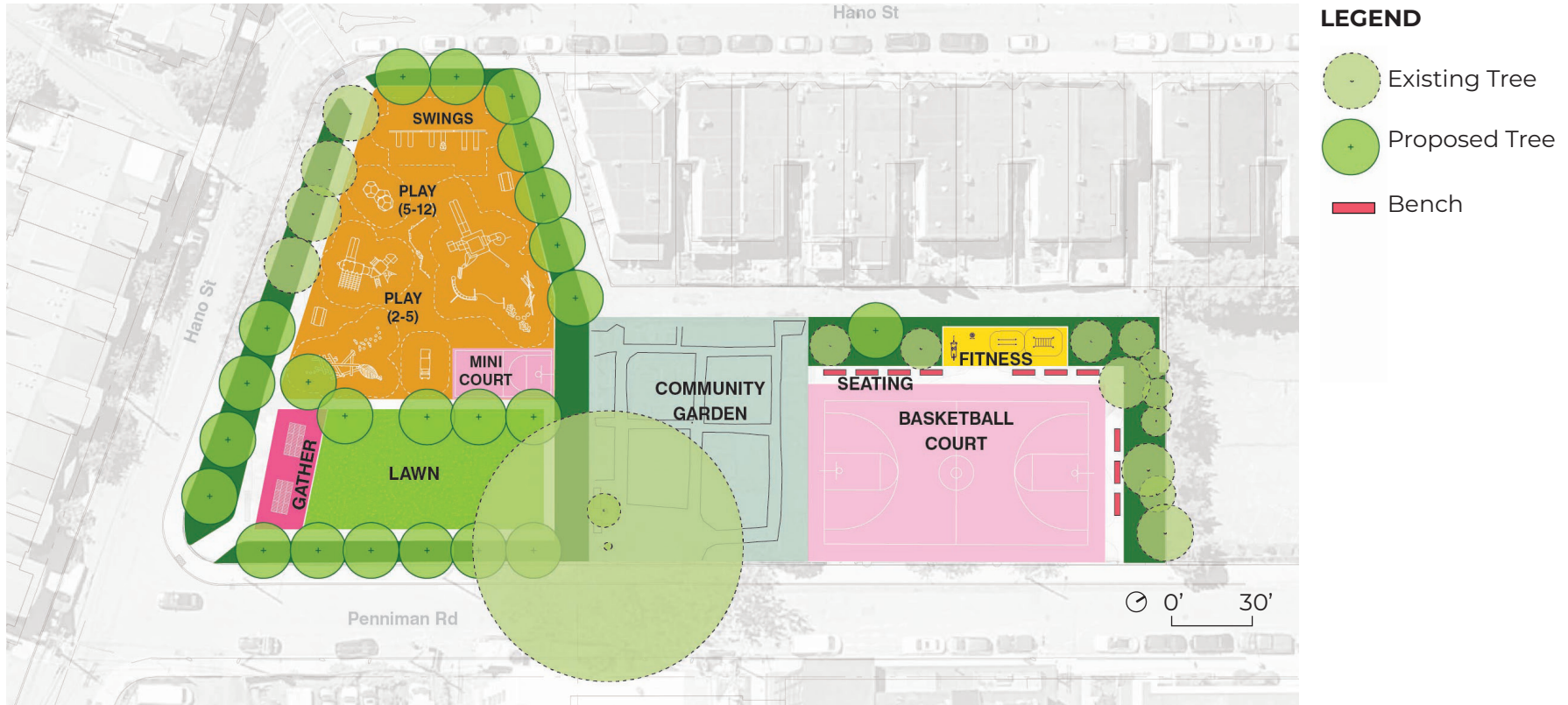


OPEN LAWN

CONCEPT 1: REFRESH | IMPROVEMENTS



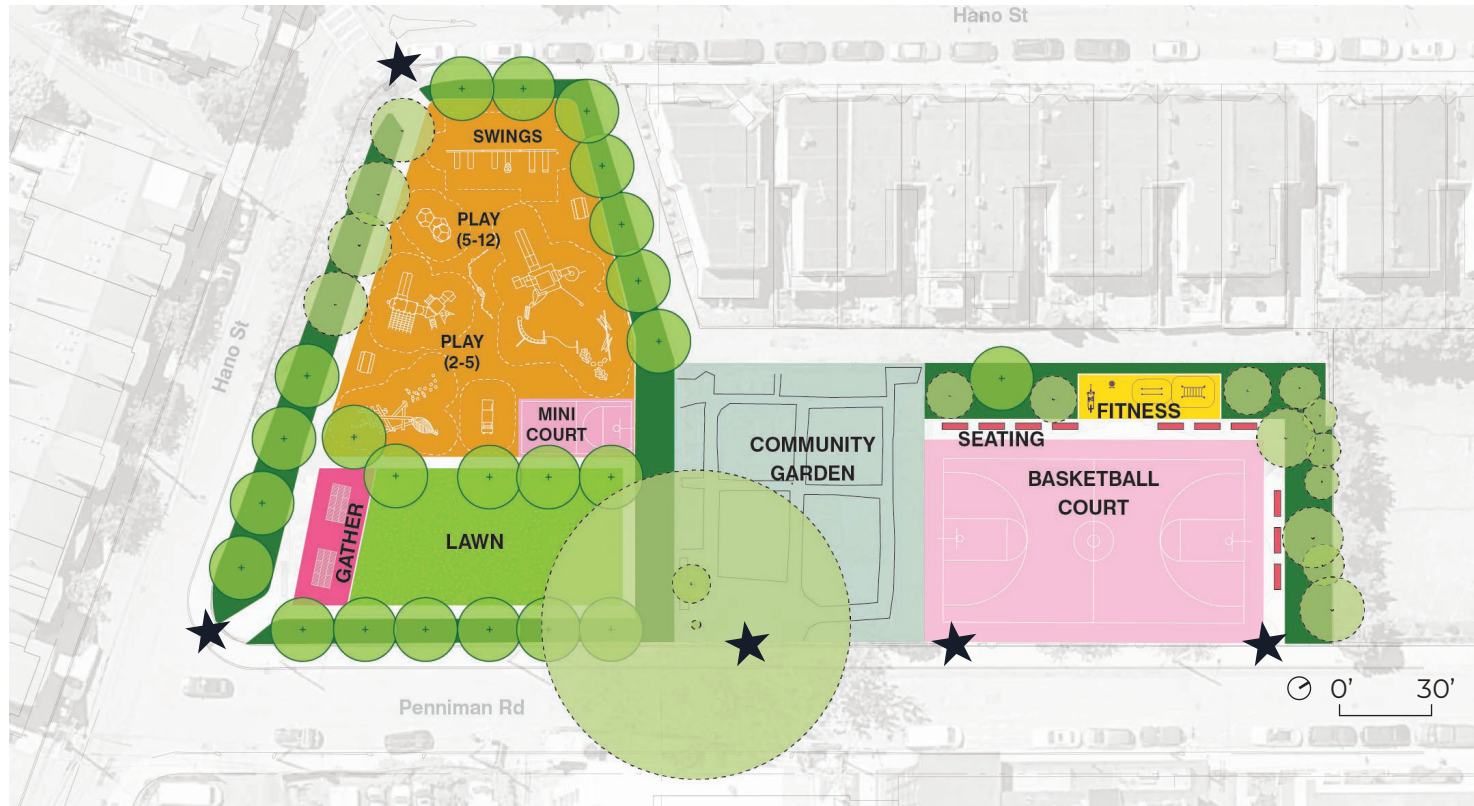
CONCEPT 2: TRADE | OVERALL PLAN



- **Swap** locations of basketball court and lawn.
- Gathering plaza at park entrance at Penniman Rd.
- Maximize playground area.
- Court-specific seating & fitness area.

We can combine these boards (typ all concepts).

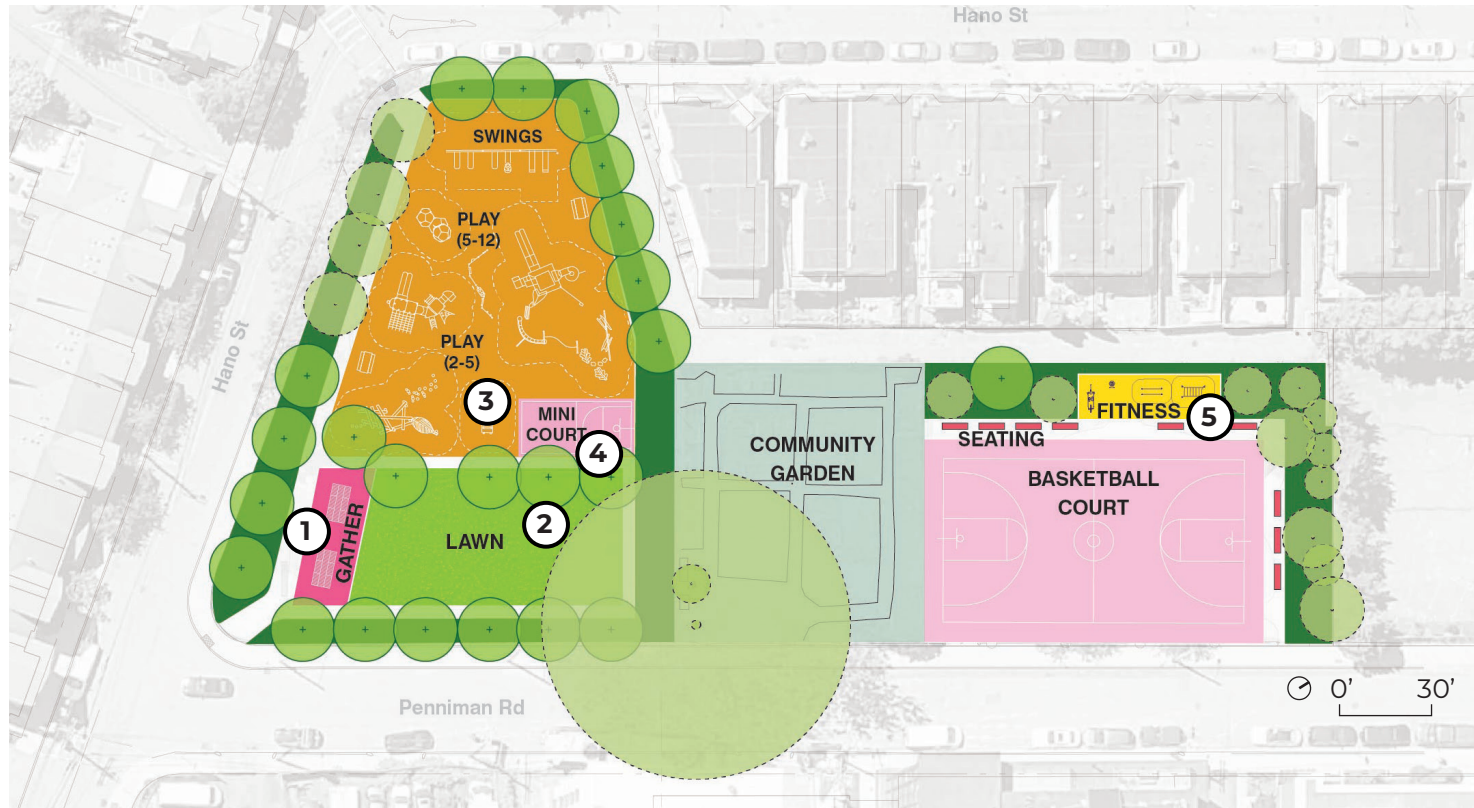
CONCEPT 2: TRADE | OVERALL PLAN



LEGEND

- Existing Tree
- Proposed Tree
- Bench
- Park Entrances

CONCEPT 2: TRADE | PRECEDENTS



LEGEND

- Existing Tree
- Proposed Tree
- Bench



STACKED SEATING



OPEN LAWN AND GATHER



PLAY FOR MANY AGE RANGES

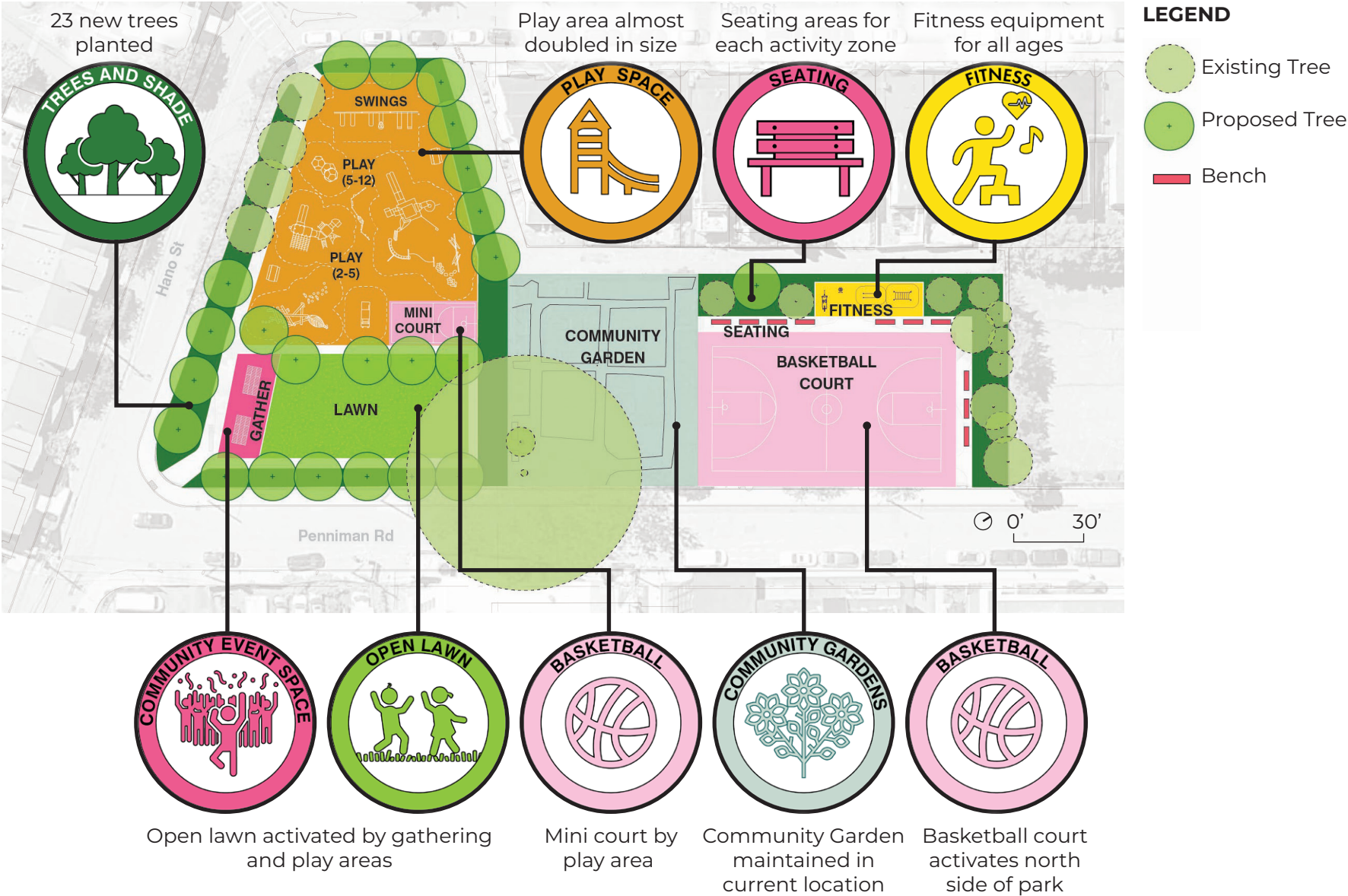


MINI-COURT

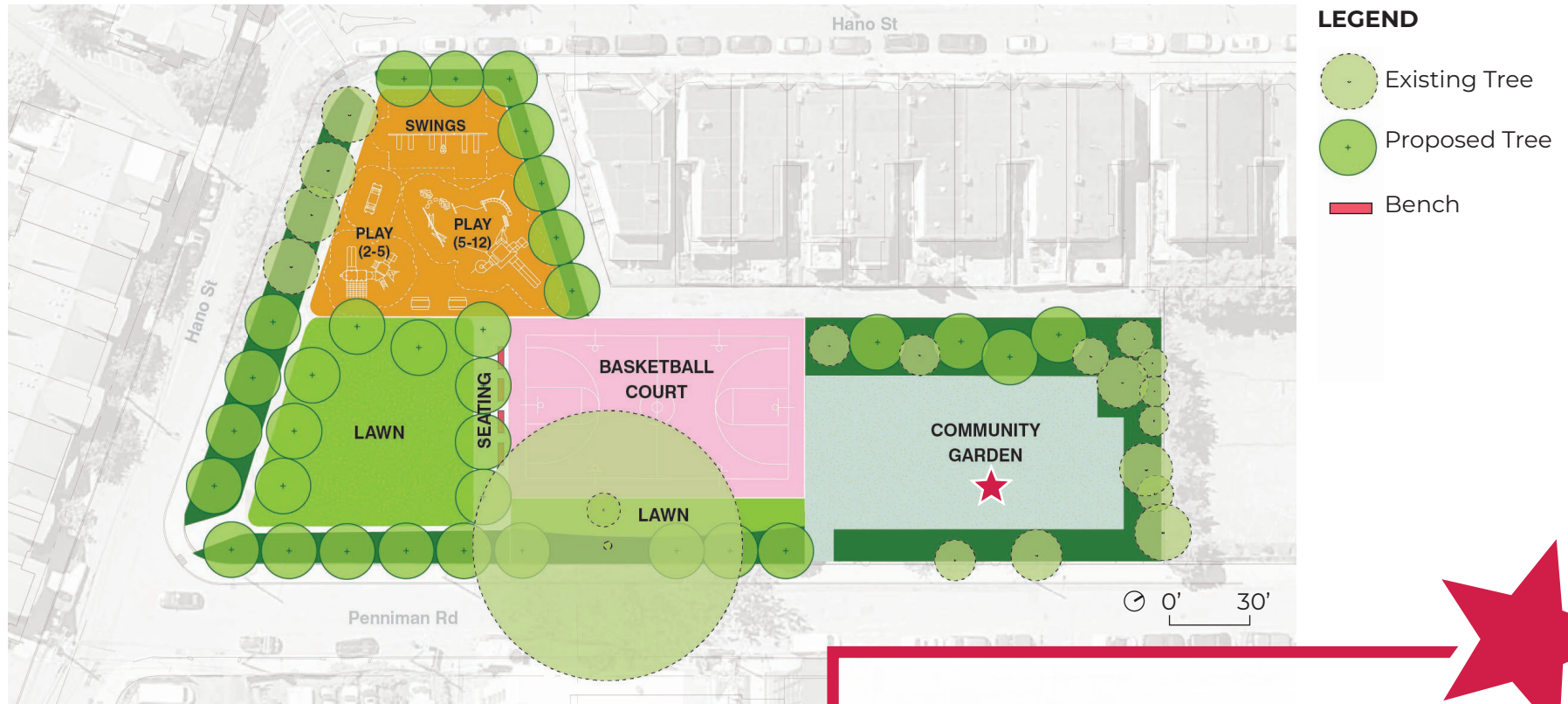


FITNESS

CONCEPT 2: TRADE | IMPROVEMENTS



CONCEPT 3: SHUFFLE | OVERALL PLAN

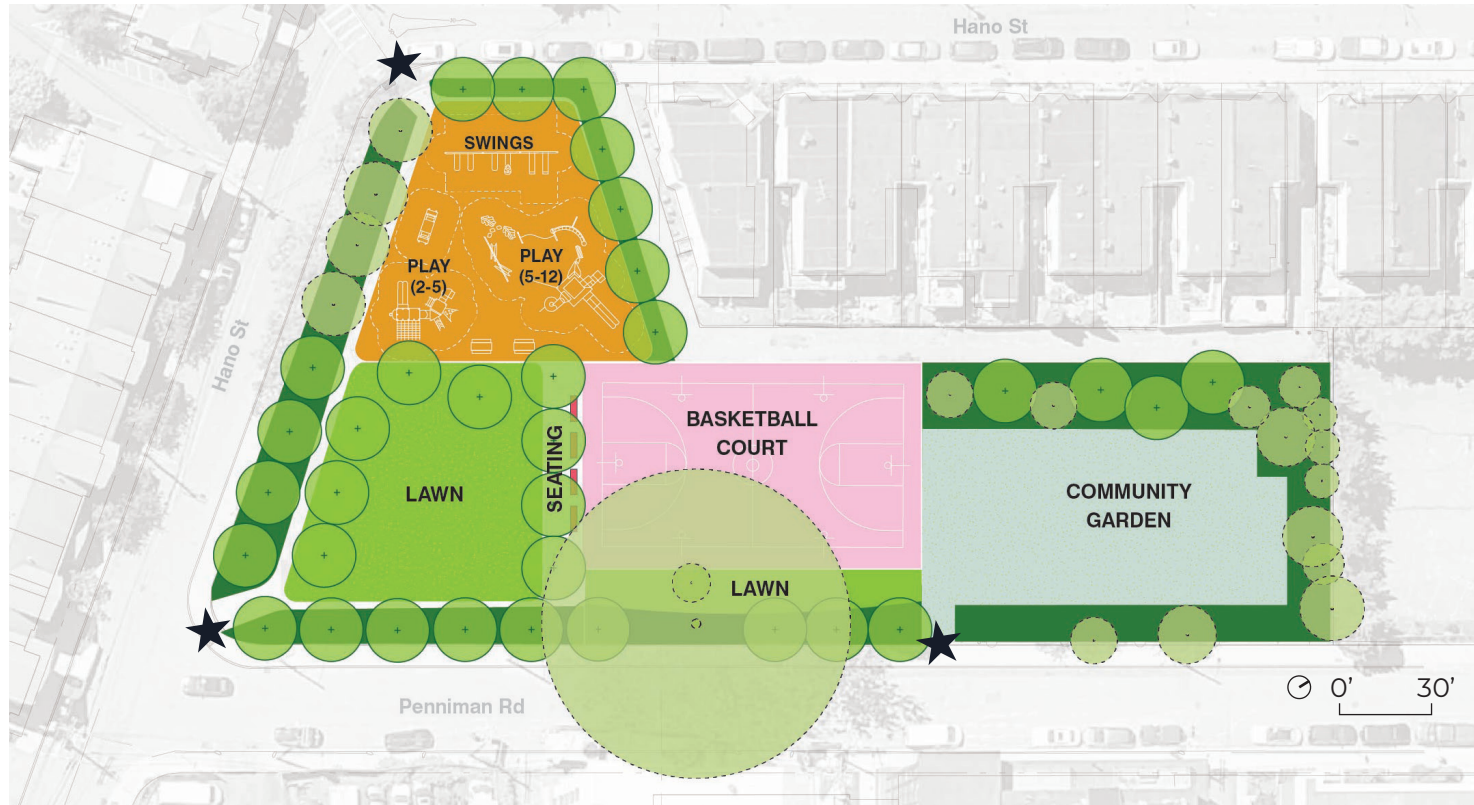


- **Relocate** community garden to **unify** the park.
- Seating areas act as a flexible connector between park programs.
- Park entrance at open lawn.
- Flexible lawn seating at court.
- Greener & shadier streetfront along Penniman Rd.

Community Garden Relocation Consideration:

1. Improvements to the community garden were not part of the original project scope or budget.
2. Relocating the community garden would shift significant budget away from other park programs (play, basketball, gather).

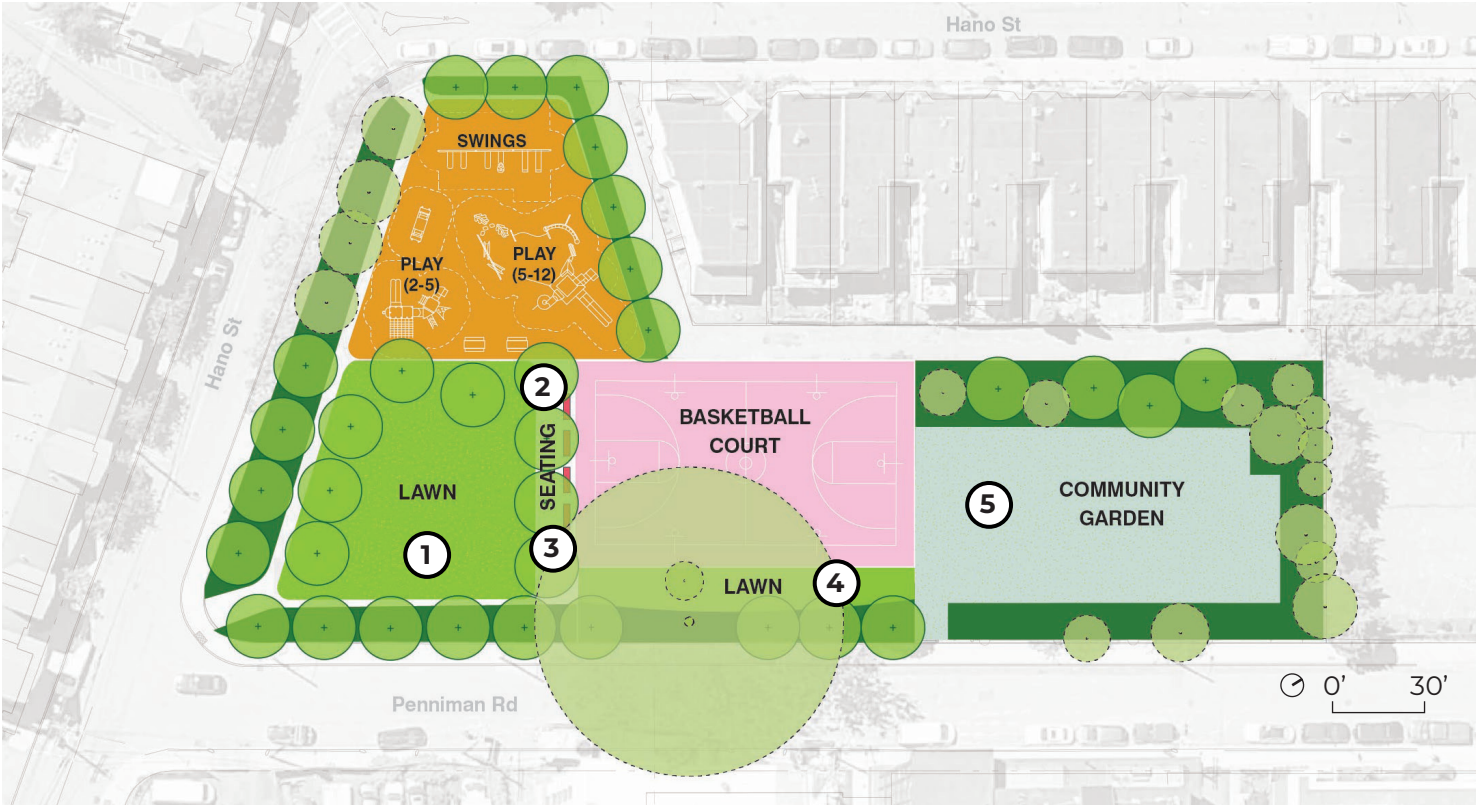
CONCEPT 3: SHUFFLE | OVERALL PLAN



LEGEND

- Existing Tree
- Proposed Tree
- Bench
- Park Entrances

CONCEPT 3: SHUFFLE | PRECEDENTS



LEGEND

- Existing Tree
- Proposed Tree
- Bench



1
OPEN LAWN
AND GATHER



2
PICNIC TABLES



3
BENCH SEATING

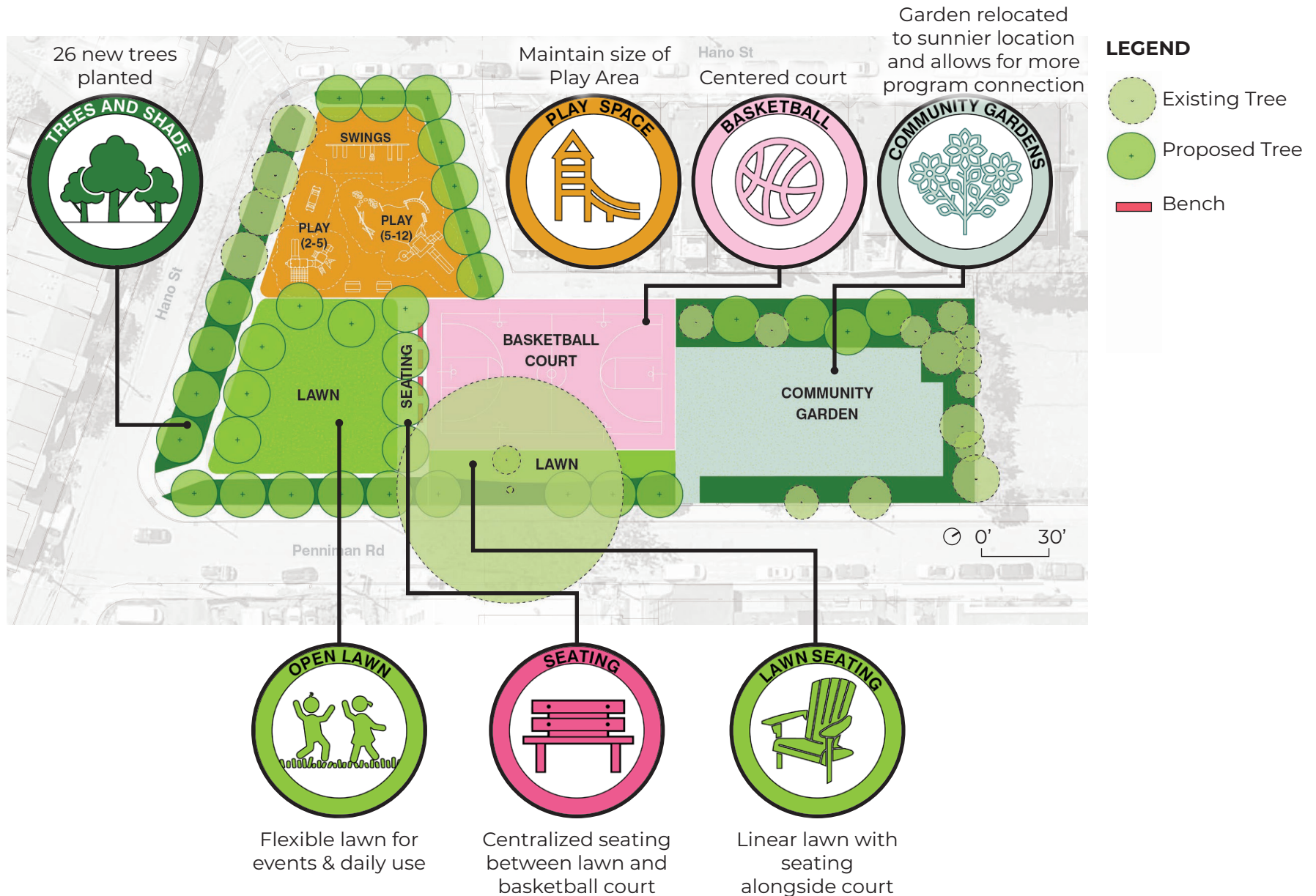


4
LAWN SEATING



5
COMMUNITY
GARDEN

CONCEPT 3: SHUFFLE | IMPROVEMENTS



PRECEDENTS: PLAY

5-12 YEAR OLD
PLAY AREA



NET CLIMBER



GROUP SPINNER



MULTI-LEVEL PLAY



STRENGTH AND AGILITY

FLEXIBLE
PLAY AREA



GROUP SWINGS



SWINGS



HANG OUT



SCULPTURAL SEAT

2-5 YEAR OLD
PLAY AREA



TRIKE LOOP



SENSORY PLAY

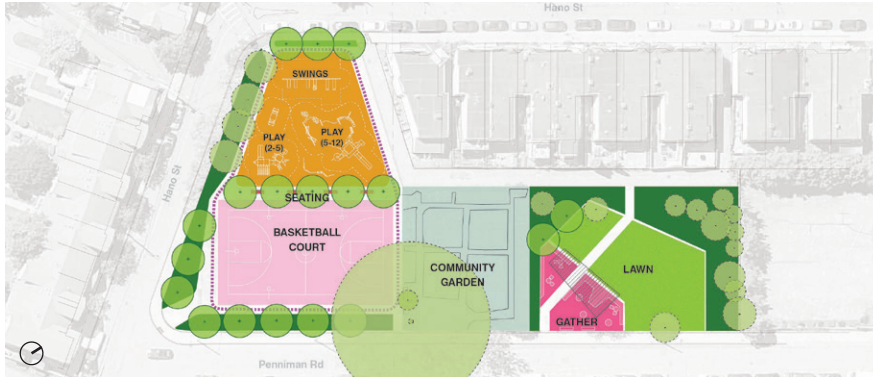


IMAGINARY PLAY



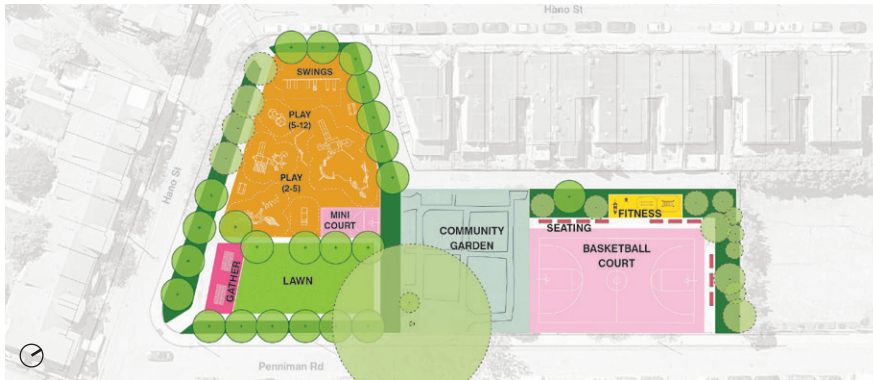
CLIMBER AND SLIDE

CONCEPT OVERVIEW



CONCEPT 1: REFRESH

- **Simple refinements** to what's already there.



CONCEPT 2: TRADE

- **Swap** locations of basketball court and lawn.



CONCEPT 3: SHUFFLE

- **Relocate** community garden to **unify** the park.

A blue-tinted photograph of a park. In the foreground, a paved path curves from the bottom left towards the center. To the right of the path is a wooden picnic table with two benches. The background features a chain-link fence, several trees, and a house with a porch. The entire image is overlaid with a semi-transparent blue filter.

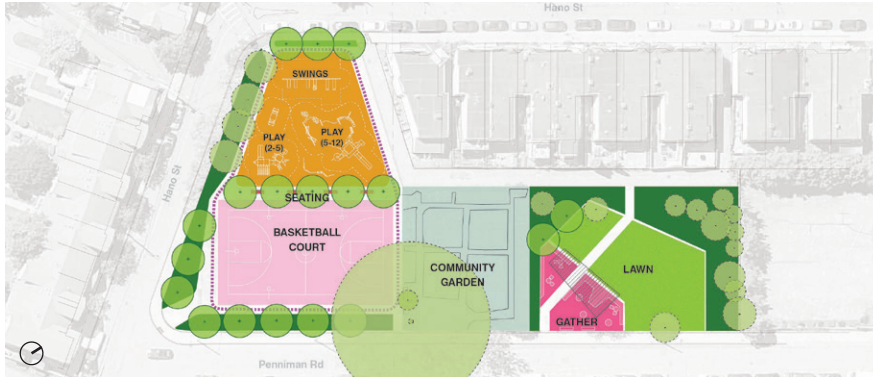
TEAM LISTENING & COMMUNITY DISCUSSION

TAKE THE COMMUNITY MEETING 2 SURVEY:



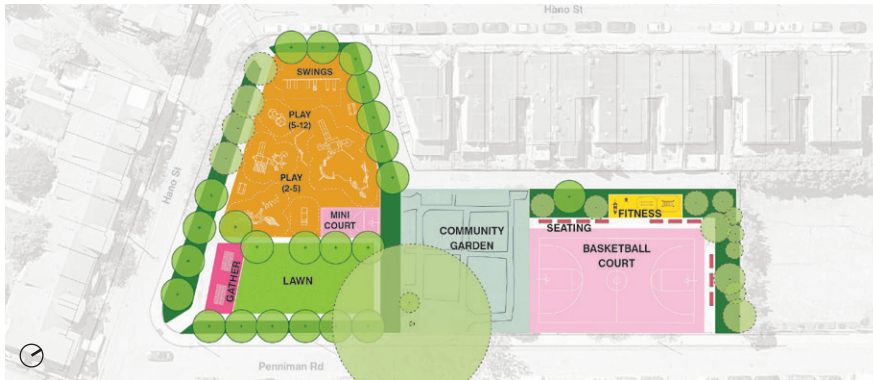
bit.ly/4kjpQgp

CONCEPT OVERVIEW



CONCEPT 1: REFRESH

- **Simple refinements** to what's already there.



CONCEPT 2: TRADE

- **Swap** locations of basketball court and lawn.



CONCEPT 3: SHUFFLE

- **Relocate** community garden to **unify** the park.



Next Meeting - Spring 2026

For questions, maintenance requests or concerns regarding any of our parks contact 311



To learn more, visit the project website:

<https://www.boston.gov/departments/parks-and-recreation/project/penniman-road-play-area-improvements>

For questions or comments about this project, contact Max Sell

max.sell@Boston.gov

January 28, 2026

Boston Parks and Recreation

