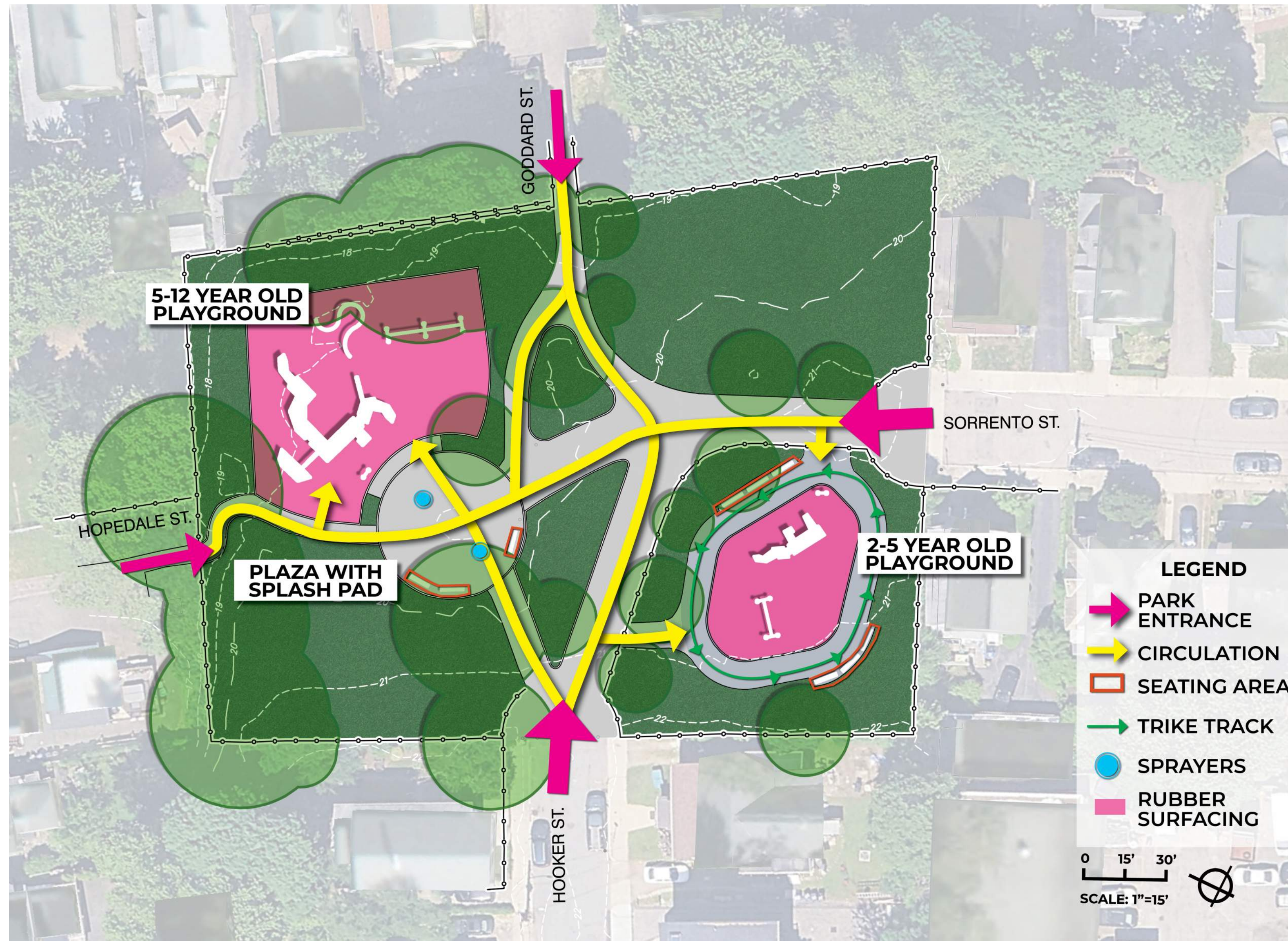
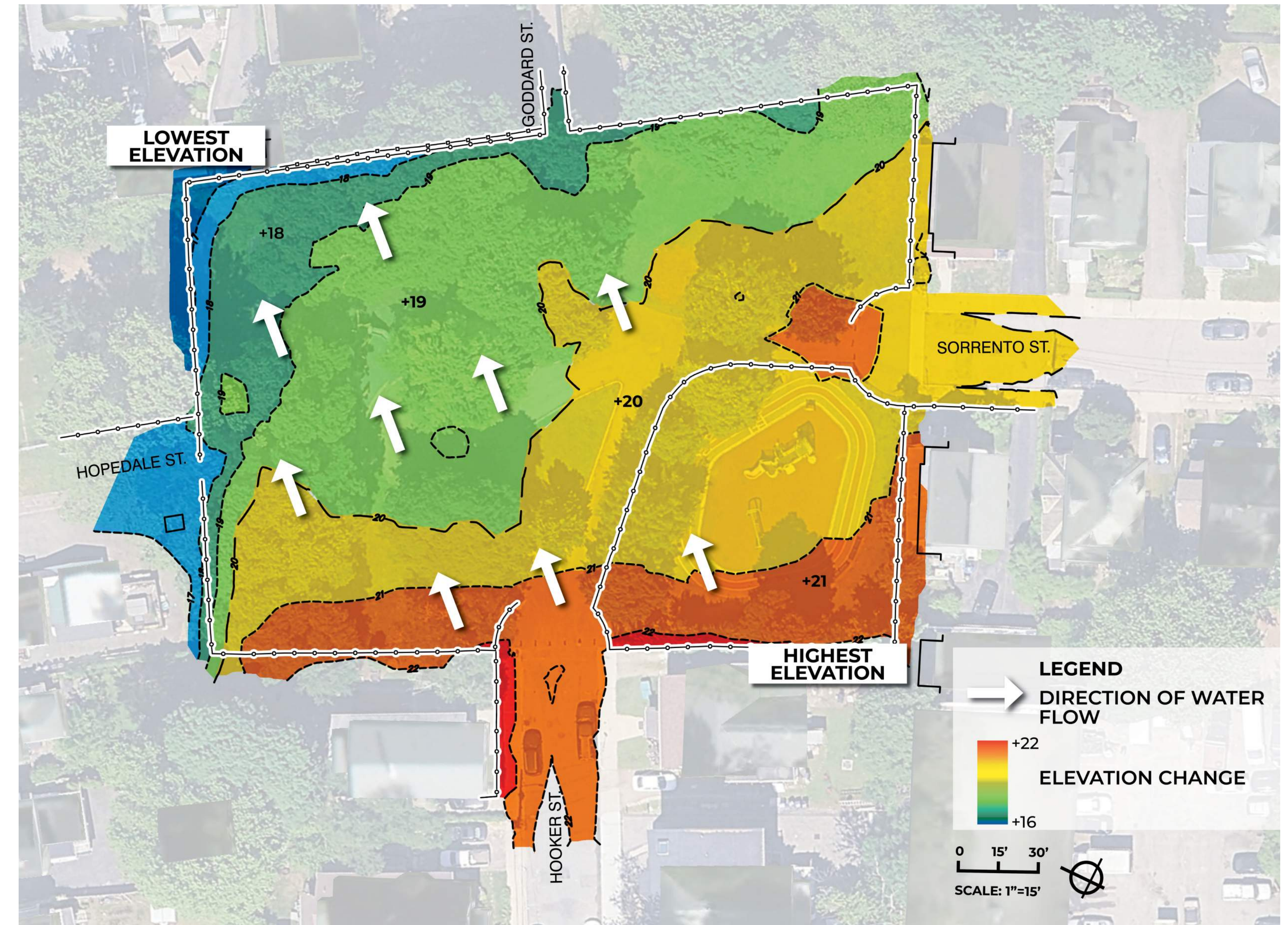


# EXISTING CONDITIONS | SITE ANALYSIS



**Current Circulation and Amenities**



**Current Topography and Drainage**



# EXISTING CONDITIONS | OBSERVATIONS



**Park is at intersection of four streets**



**Seating plaza doubles as splash pad**



**Mature shade trees**



**Wide paths**



**5-12 year old playground**



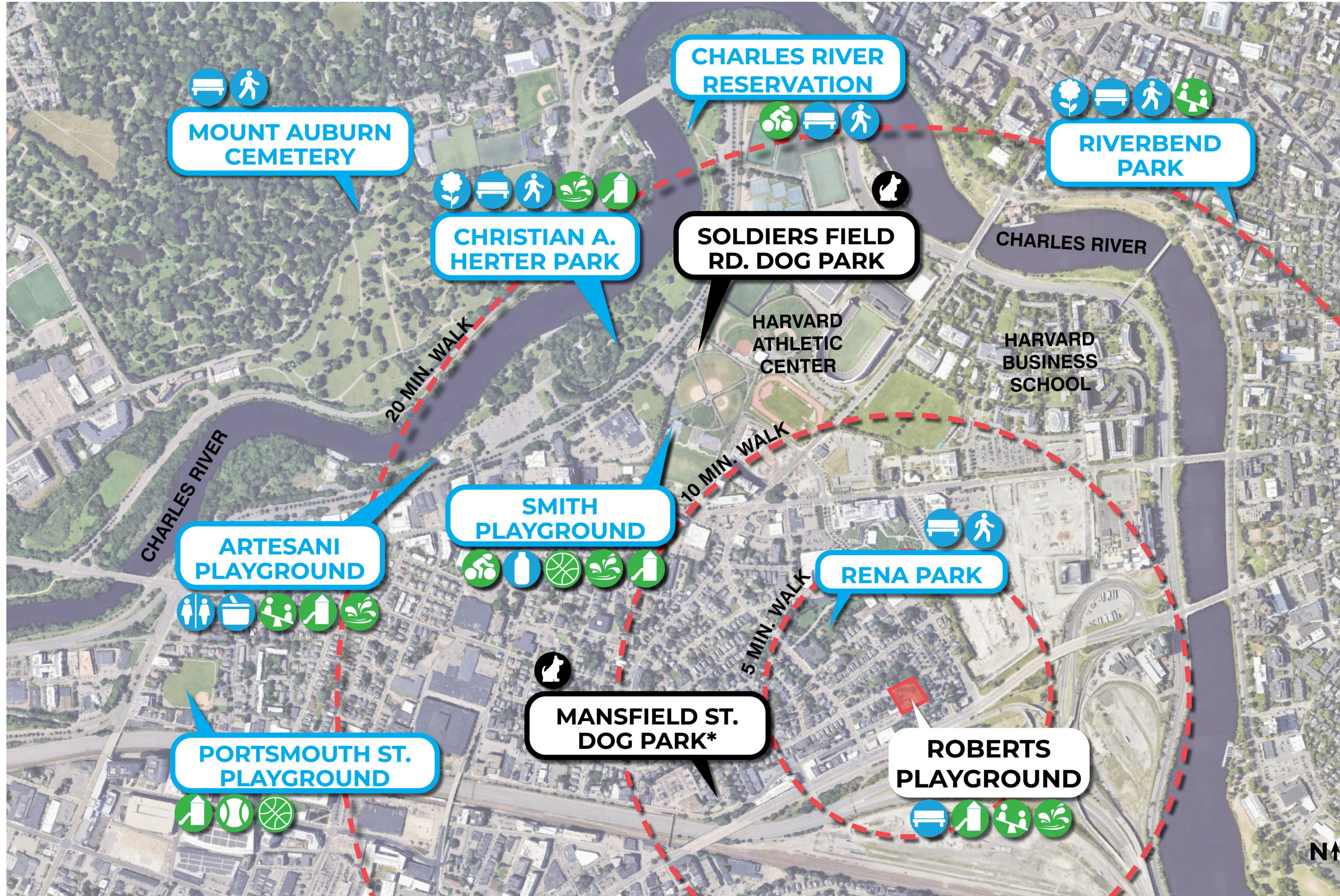
**2-5 year old playground**
















JAMES H. ROBERTS PLAYGROUND  
**COMMUNITY MEETING #3**

Weston & Sampson<sup>SM</sup>  
design studio

# EXISTING CONDITIONS | NEARBY PARKS



-  Benches
-  Community Garden
-  Walking Paths
-  Water Fountain
-  Restroom
-  Picnic Area
-  Space for Dogs  
\*Privately owned
-  Playground
-  Tot-Lot
-  Ball Field
-  Basketball Court
-  Splash Pad
-  Biking Amenities



## JAMES H. ROBERTS PLAYGROUND COMMUNITY MEETING #3

# WHAT WE'VE HEARD | COMMUNITY FEEDBACK

Neighborhood Connections

Some neighbors experience water run-off in their yards from the park

People love to use the park for events + gatherings

Make the entrances more clear + accessible

Shade structures

More seating

Site Amenities + Elements

Updated (closed) trash barrels

Keep the park family + kid friendly!

Nature-inspired elements that blend into the landscape

Favorite Existing Park Features

The splash pad is a beloved neighborhood amenity

Neighbors want somewhere to exercise their dogs

The large shade trees make it feel like an oasis!

Keep some of the open lawn space



# WHAT WE'VE HEARD | CONCEPT SURVEY RESULTS

## Concept A



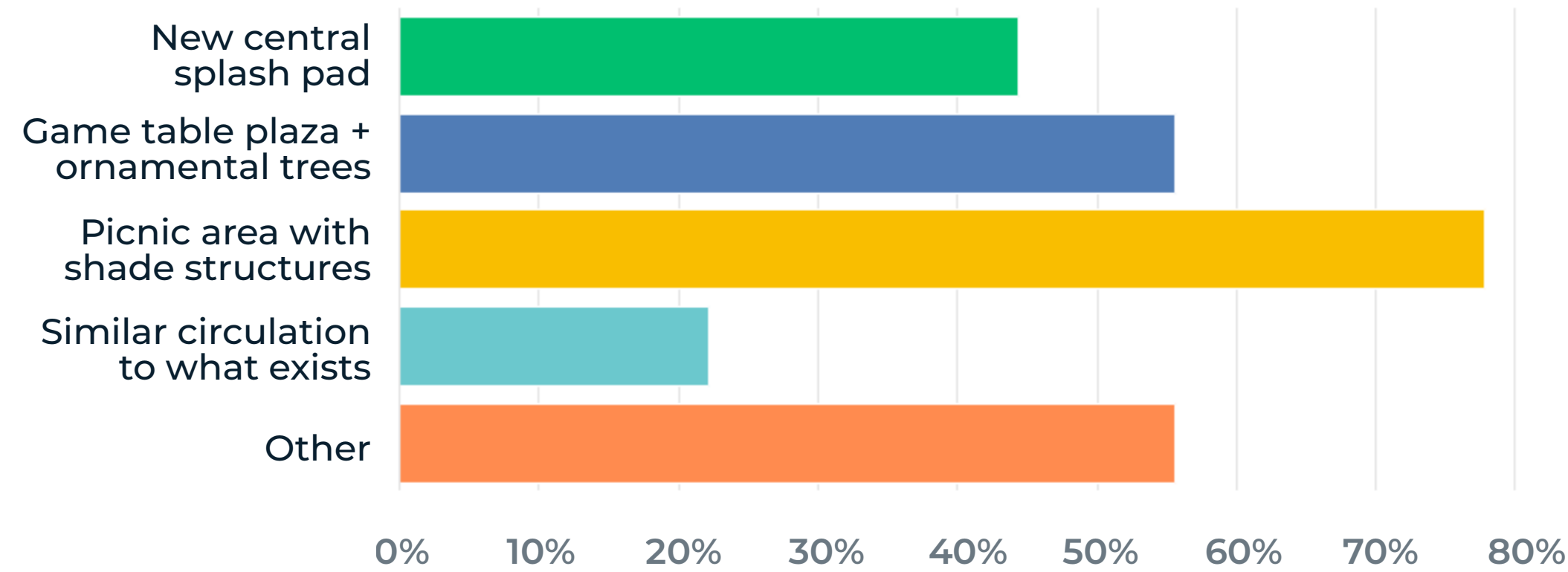
## Concept B



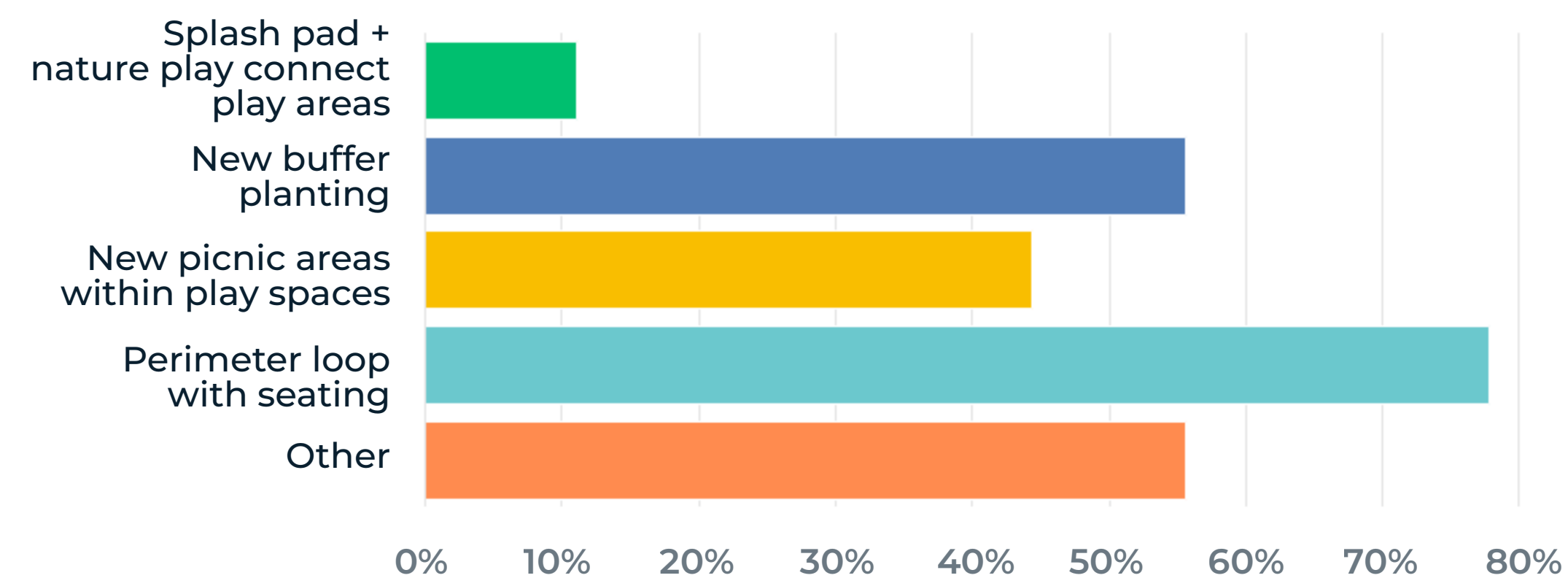
## Concept C



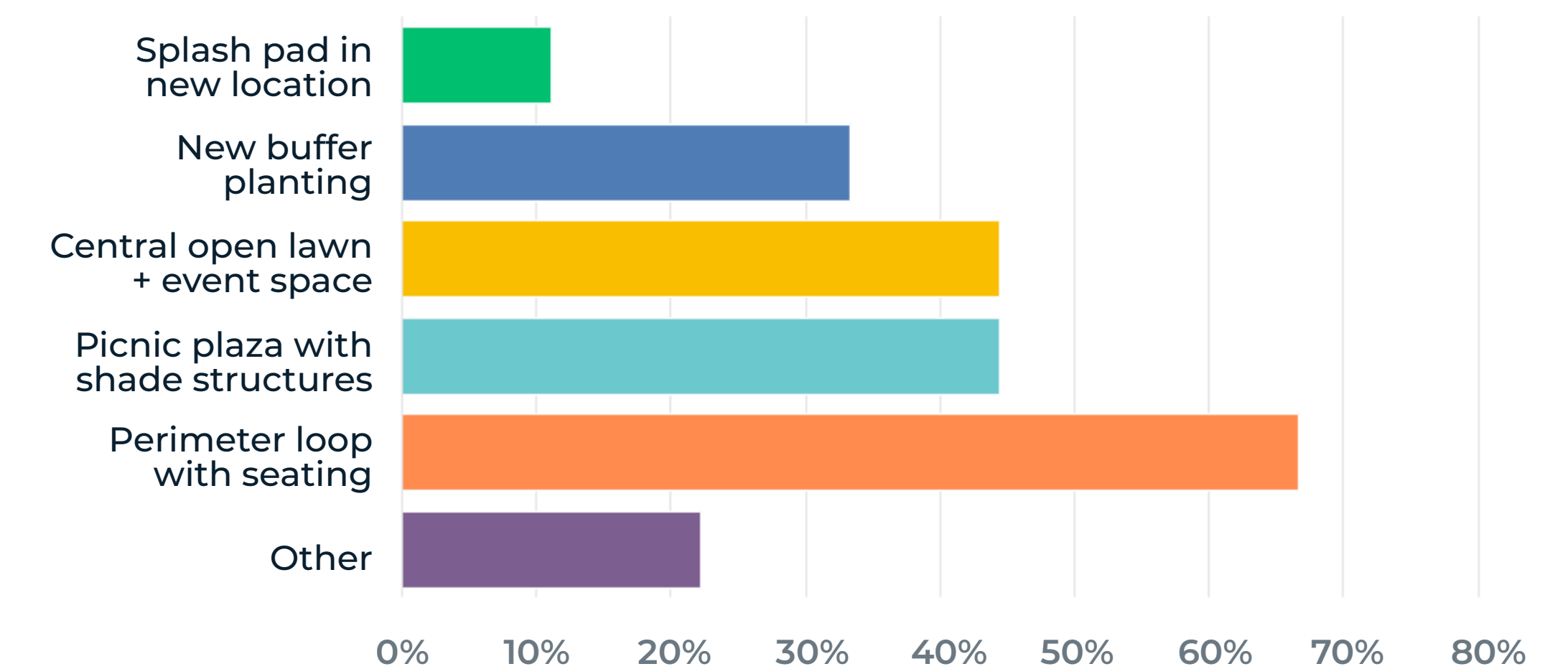
### What do you like most about Concept A?



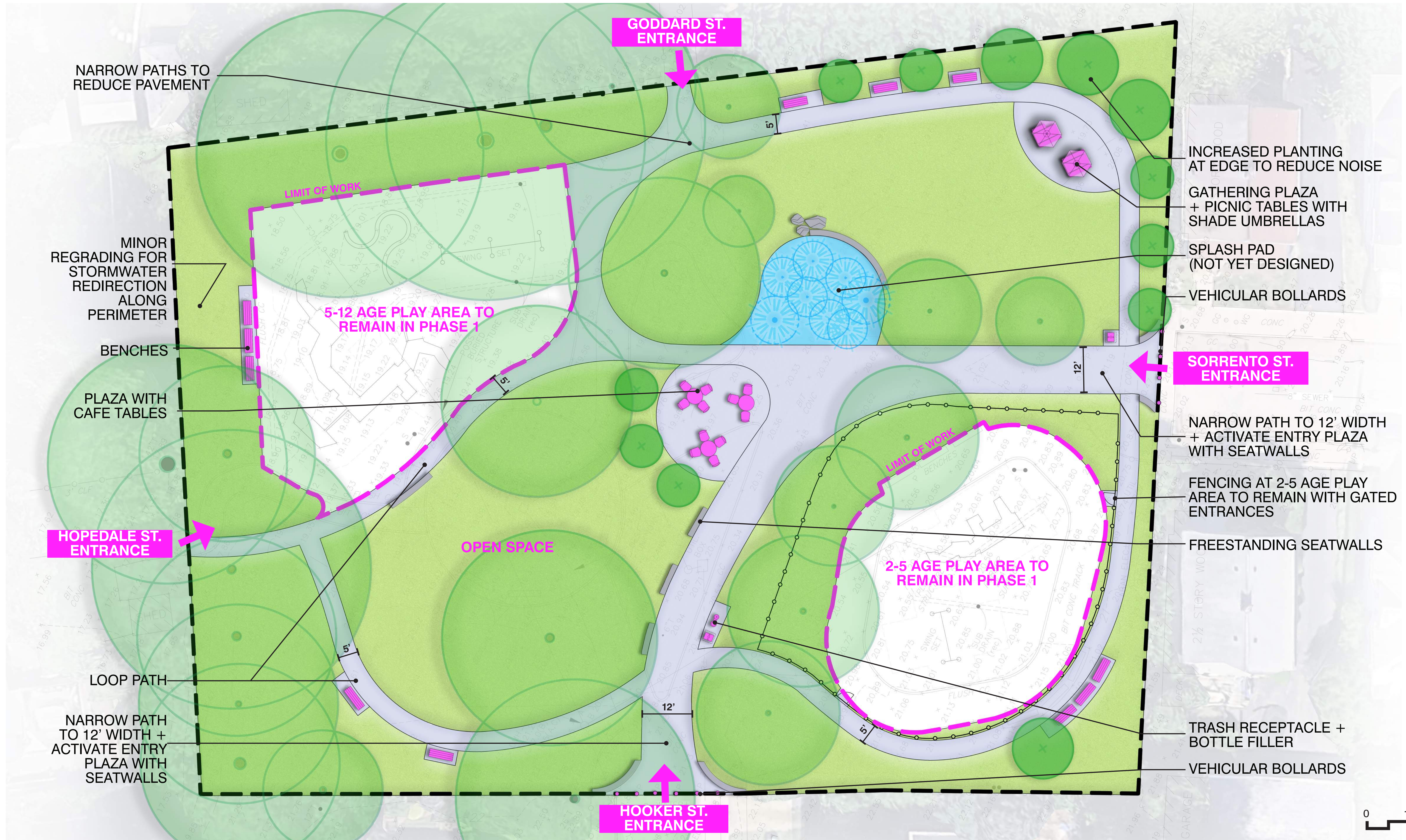
### What do you like most about Concept B?



### What do you like most about Concept C?



# PREFERRED CONCEPT | DESIGN



## JAMES H. ROBERTS PLAYGROUND COMMUNITY MEETING #3

# PREFERRED CONCEPT | INSPIRATION IMAGES



**Picnic Tables**



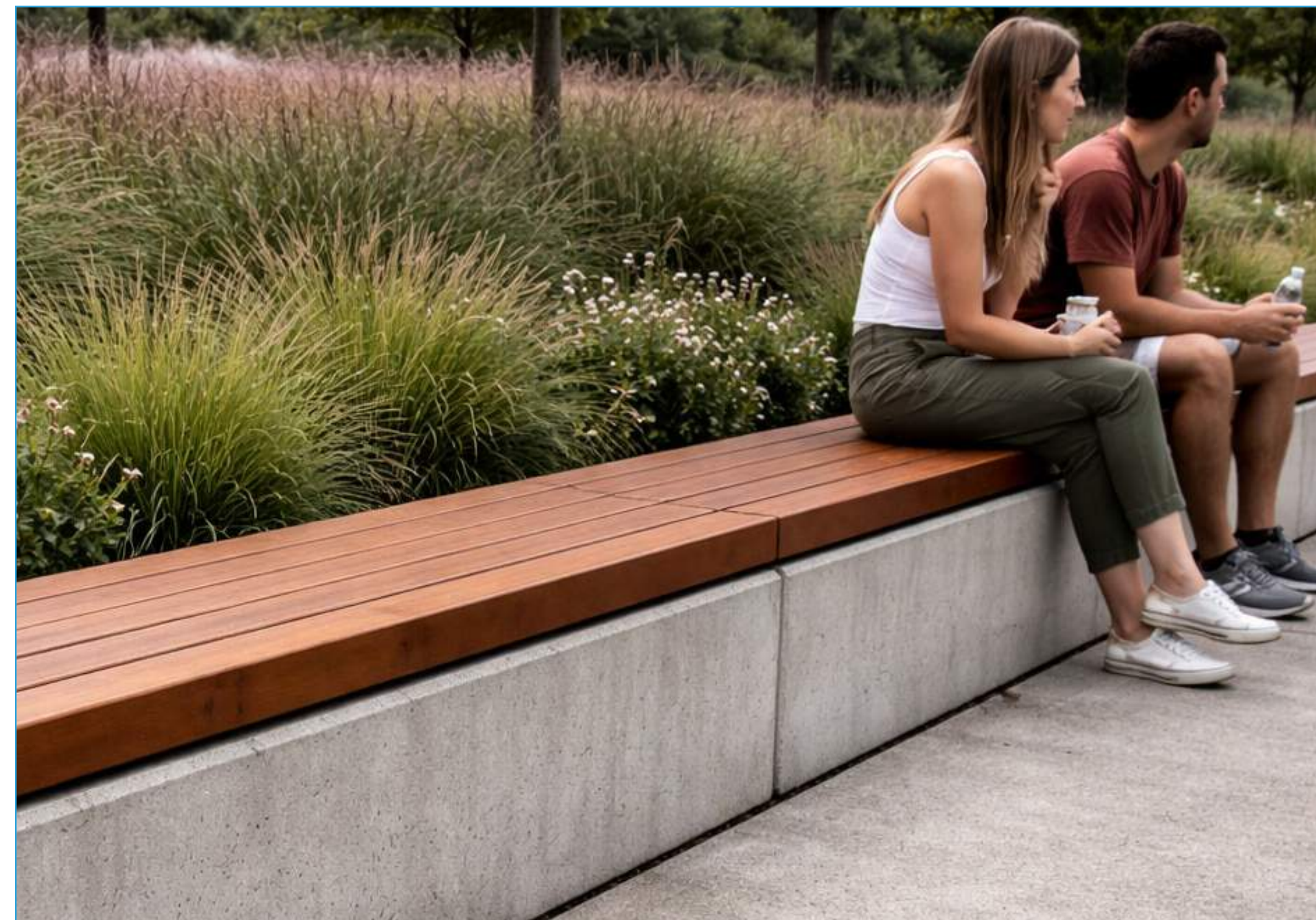
**Game Tables**



**Seating with Shade**



**Benches**



**Seatwalls**



**Open Lawn Space**



JAMES H. ROBERTS PLAYGROUND  
**COMMUNITY MEETING #3**

Weston & Sampson<sup>SM</sup>  
design studio

# PREFERRED CONCEPT | INSPIRATION IMAGES



**In-Ground Sprays  
at Splash Pad**



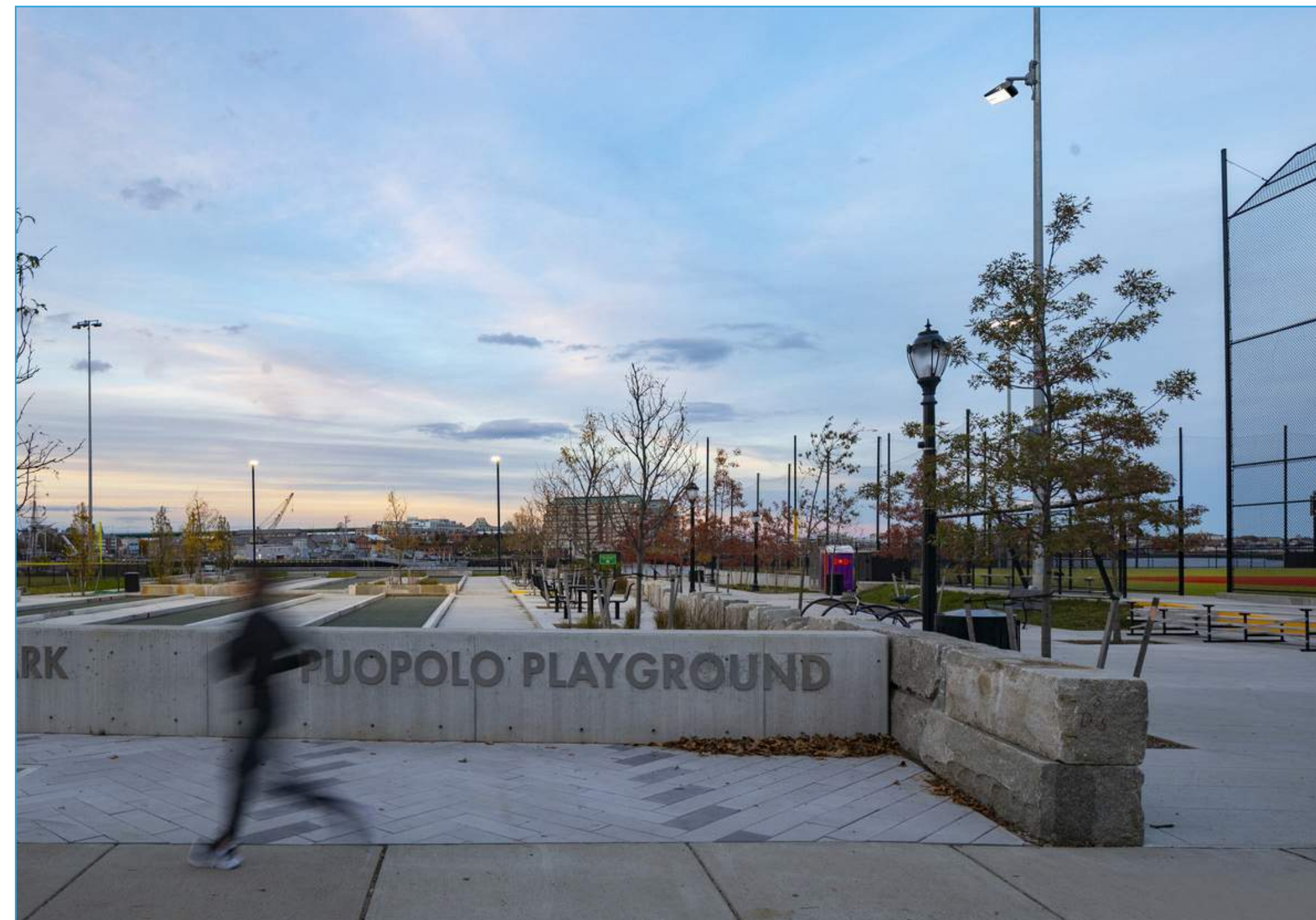
**Above-Ground Splash Pad  
Structures**



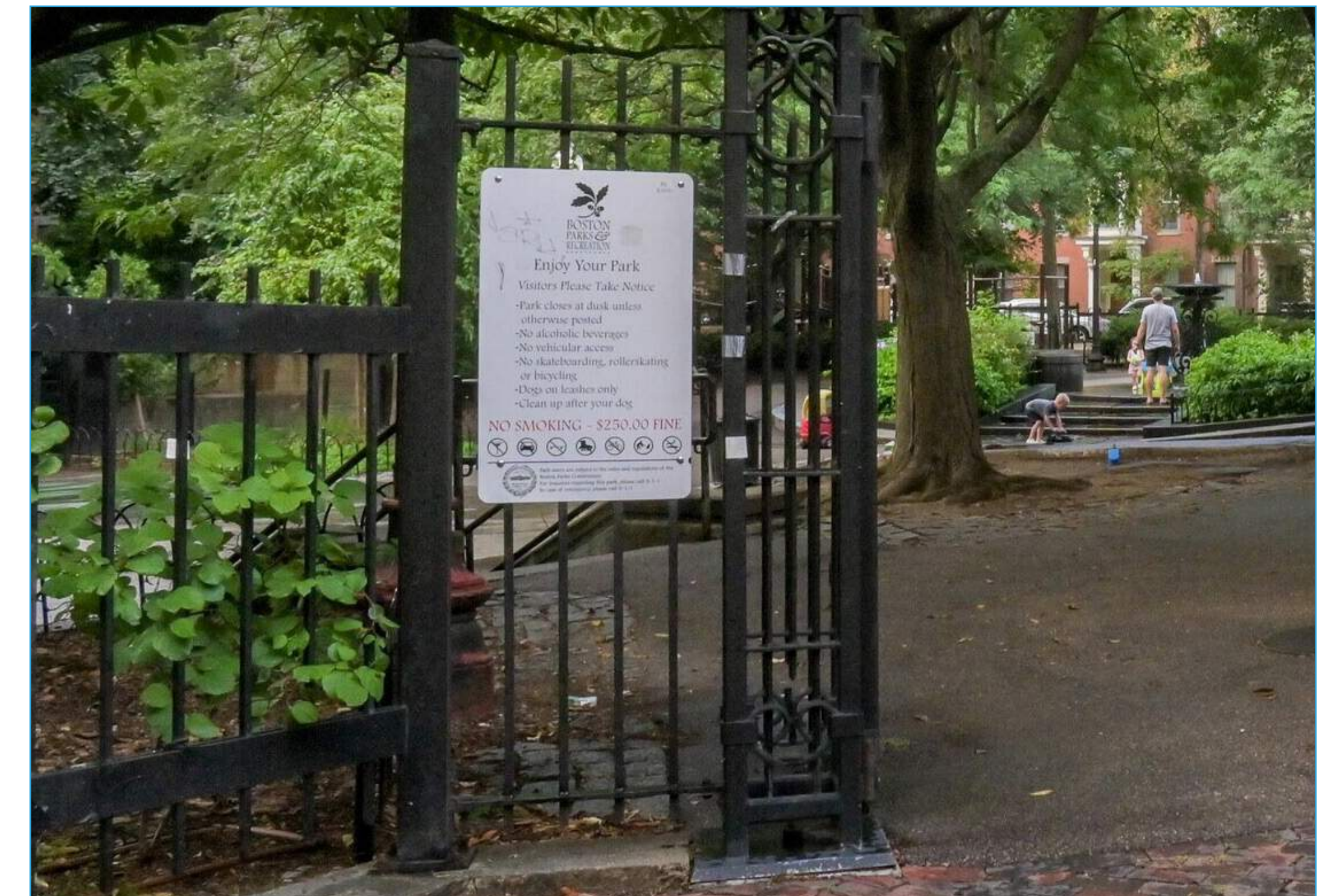
**Boulders, Blocks,  
+ Nature Play Elements**



**Perimeter Loop**



**Activated Entrance Areas  
with Sign + Seatwalls**



**Simple Fencing + Signage**



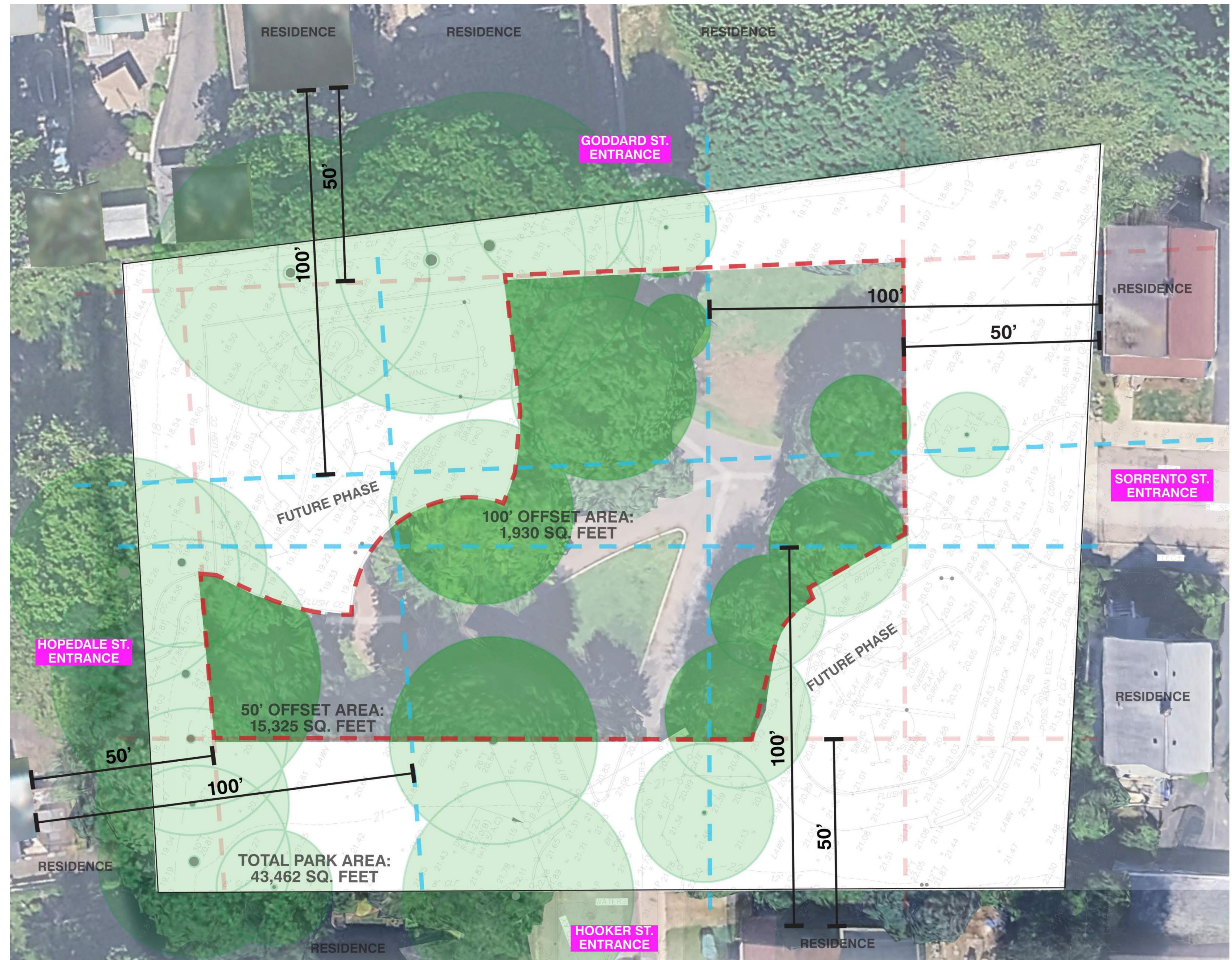
JAMES H. ROBERTS PLAYGROUND  
**COMMUNITY MEETING #3**

Weston & Sampson<sup>SM</sup>  
design studio

# WHAT WE'VE HEARD | DOG PARK CONSIDERATIONS

**BPRD requires that all dog parks are at least 50 – 100 feet from the nearest residence. At the minimum offset, an area for dogs must be in the middle of the park. A 100 foot offset creates a usable area of 1,930 square feet.**

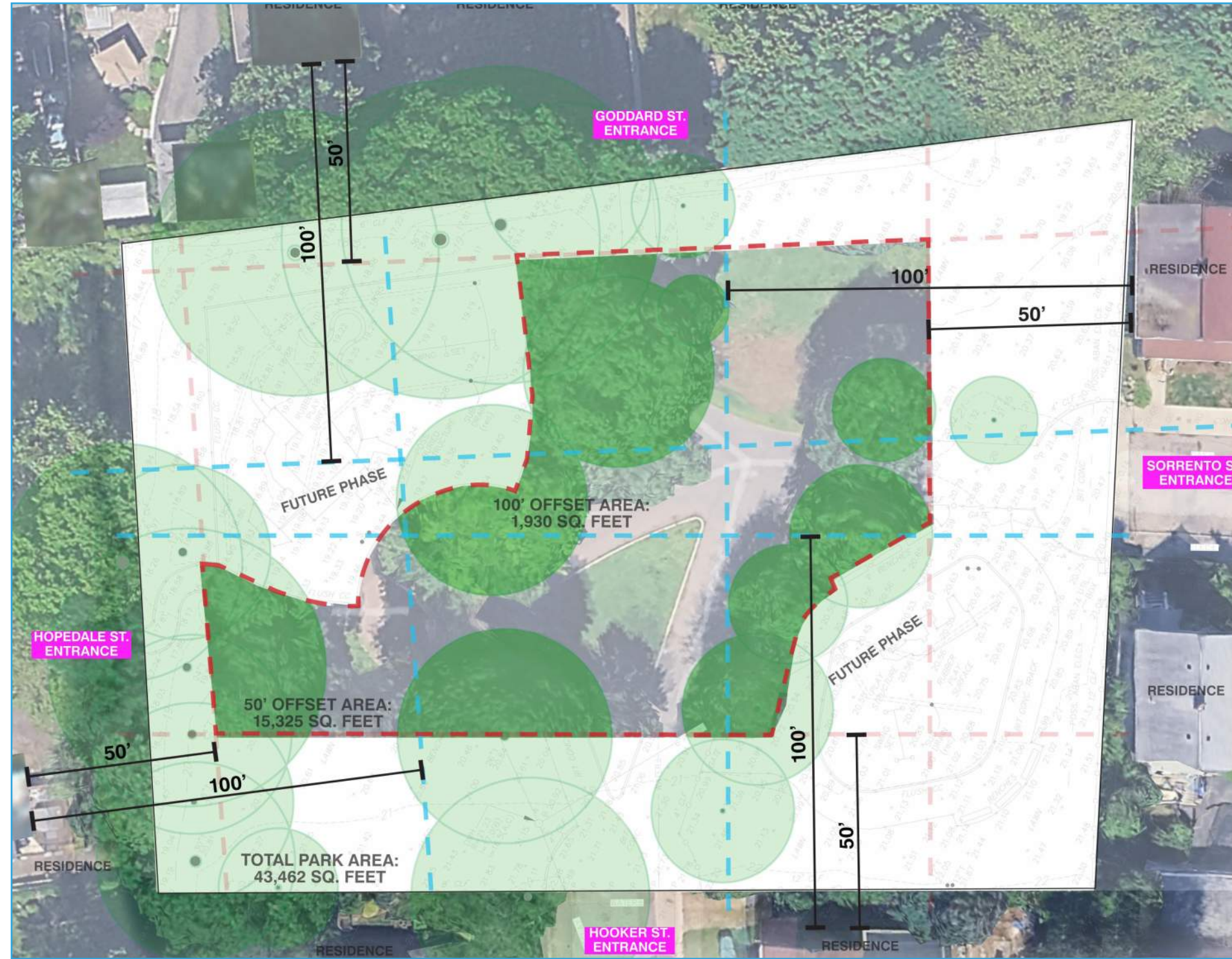
**The 50 foot offset area includes the main circulation route, established trees, and Future Phase zones. With this offset, the usable dog park area is 15,325 square feet.**



**Dog Park Fit Test**



# WHAT WE'VE HEARD | DOG PARK COMPARISONS



**Roberts Dog Park Fit Test**  
**15,325 Square Feet Total**



**De Filippo, North End**  
**8,300 Square Feet Total**



**Ronan Park, Dorchester**  
**6,400 Square Feet Total**



**Peters Park, South End Boston**  
**15,000 Square Feet Total**



**Thorndike Field, Arlington**  
**16,600 Square Feet Total**



**Danehy Park, Cambridge**  
**19,910 Square Feet Total**



JAMES H. ROBERTS PLAYGROUND  
**COMMUNITY MEETING #3**

