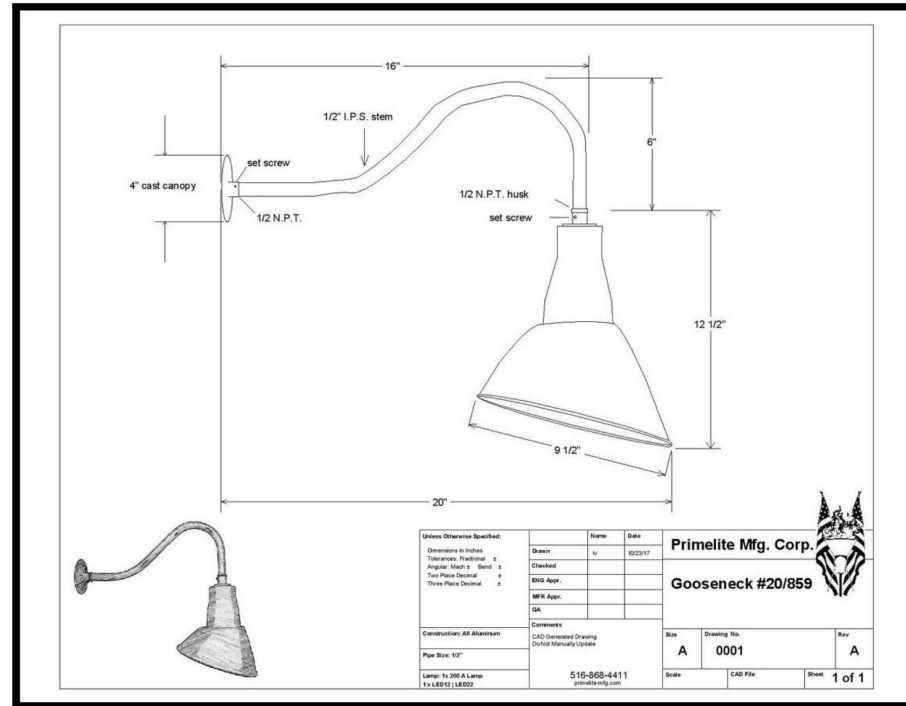


106 Cambridge Street, Boston, MA

DESIGN
REVISION



7FT



Install wood raised letters, painted in the franchise colors green, black, and purple
Letters to be 1 inch thick - No lighting on the sign
Spotlights only, provided and installed by the electrician
A WOOD BOARD UNDER THE LETTERS

DESIGN STATUS

508-388-9568

244 Liberty Street, Suite #8
Brockton, MA 02301

www.bpsignsandprinting.com

