

**1. Close Up Photos - Rot at Sill and Floor**



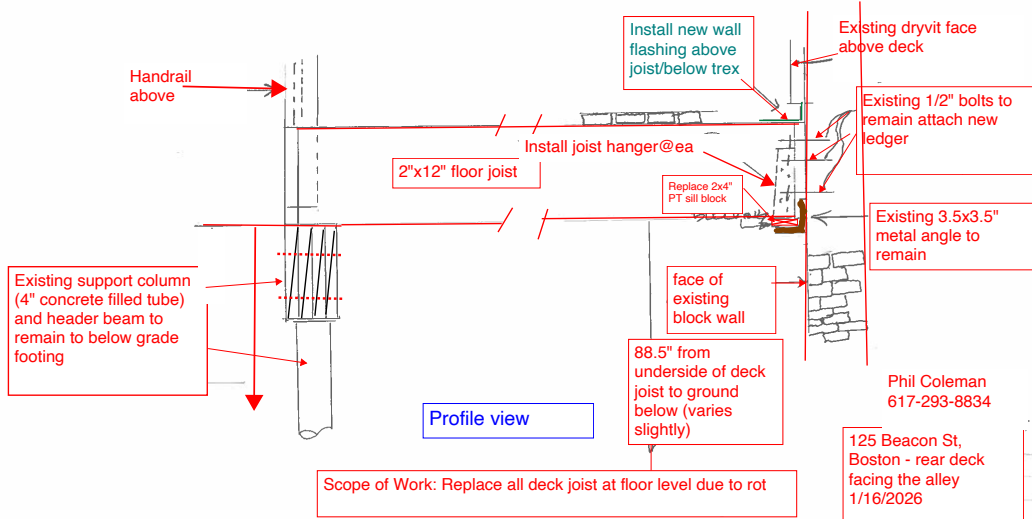
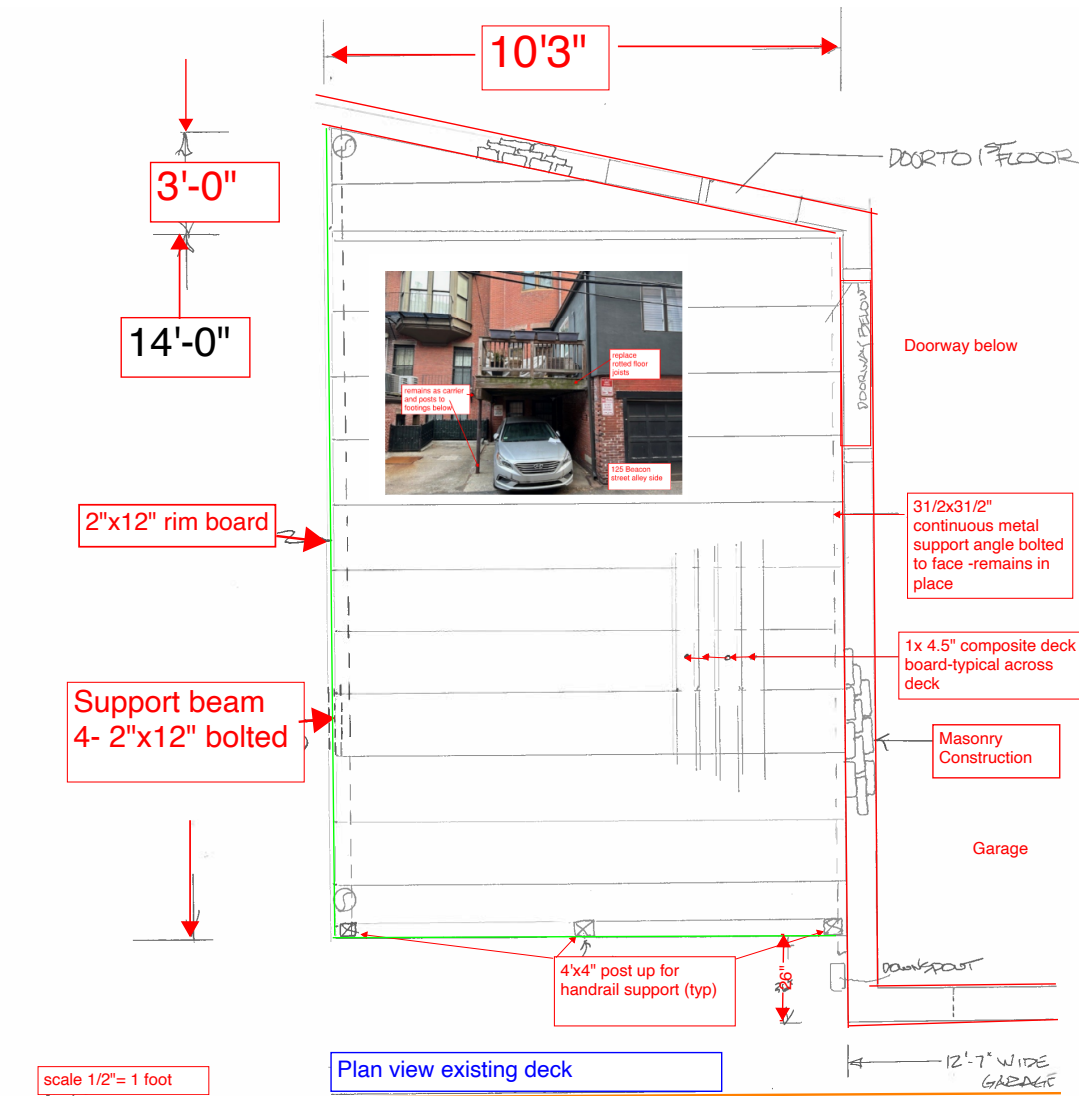
**2. Close Up Photos - Underside of Joists & Floor**



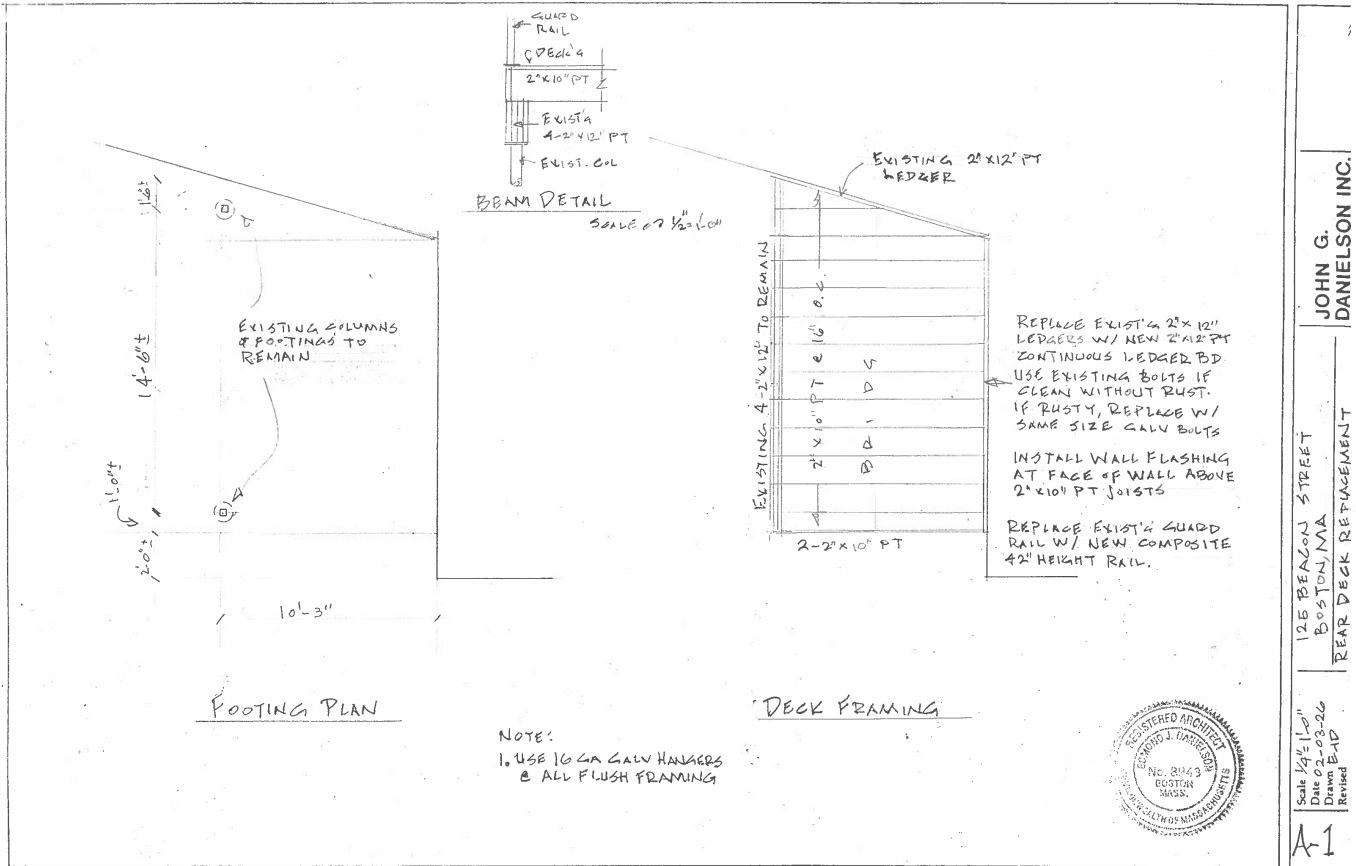
**3. Photos Showing Overall View - Deck context**



### 4. Site Plans & Work Description



### 5. Architectural Drawing



### 6. Building Materials - Trex Composite Decking (1" grooved edge Gray)



**7. Building Materials - Trex Composite Railings (Black)**

