

EXISTING BUILDING FRONT FACADE @285  
COMMONWEALTH AVE



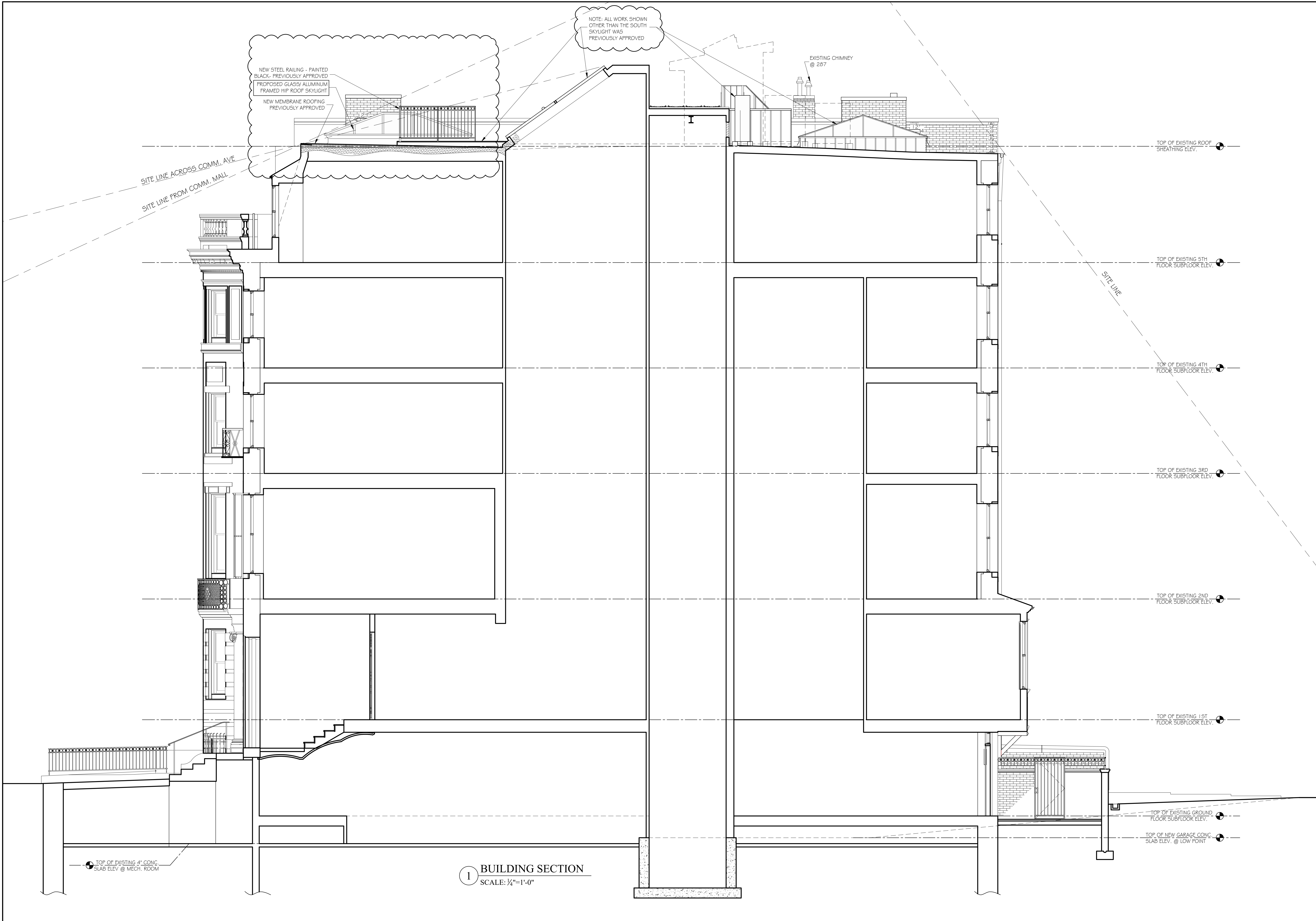
EXISTING BUILDING FRONT FACADE  
@ 285 COMMONWEALTH AVE





AERIAL VIEW FROM SOUTH EAST





45 Newbury Street, Suite 506  
 Boston, MA 02116  
 Phone 617.956.9992  
 Fax 917.956.9993

GRASSI DESIGN GROUP  
 BEAUCHEMIN GRASSI INTERIORS

GD BG

JOB NO: 2522  
 SCALE: 1/4" = 1'-0"  
 DATE: 05/08/2026  
 REVISED

285 COMMONWEALTH AVE  
 BOSTON, MA

BUILDING SECTION

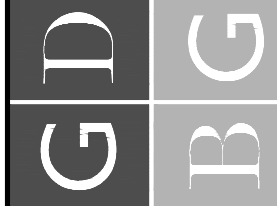
2



PROPOSED SOUTH ELEVATION  
SCALE: 1/4"=1'-0"

45 Newbury Street, Suite 506  
Boston, MA 02116  
Phone 617-956-9992  
Fax 617-956-9993

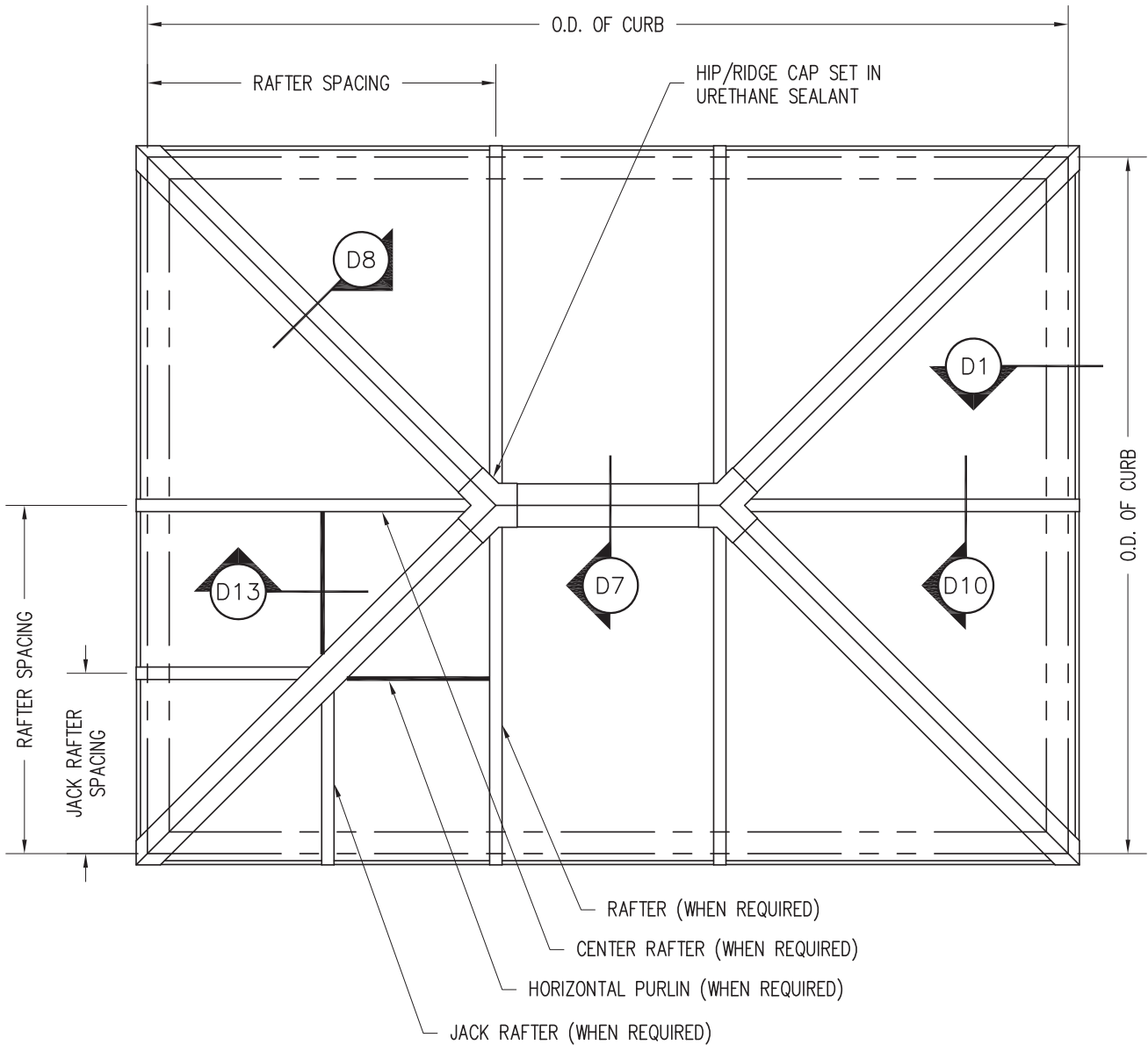
GRASSI DESIGN GROUP  
BEAUCHEMIN GRASSI INTERIORS



JOB NO: 2522  
SCALE: 1/4" = 1'-0"  
DATE: 05.08.2026  
REVISED

285 COMMONWEALTH AVE  
BOSTON, MA

PROPOSED SOUTH  
BUILDING ELEVATION



GENERAL NOTES:

- 1) RAFTER LOCATION BASED ON WASCO'S RECOMMENDATIONS AND AAMA GLAZING GUIDELINES (BASED ON SIZE OF UNIT, TYPE OF GLAZING, CUSTOMER'S REQUEST, ETC.)
- 2) UNIT PITCHES ARE AVAILABLE FROM 3:12 TO 12:12

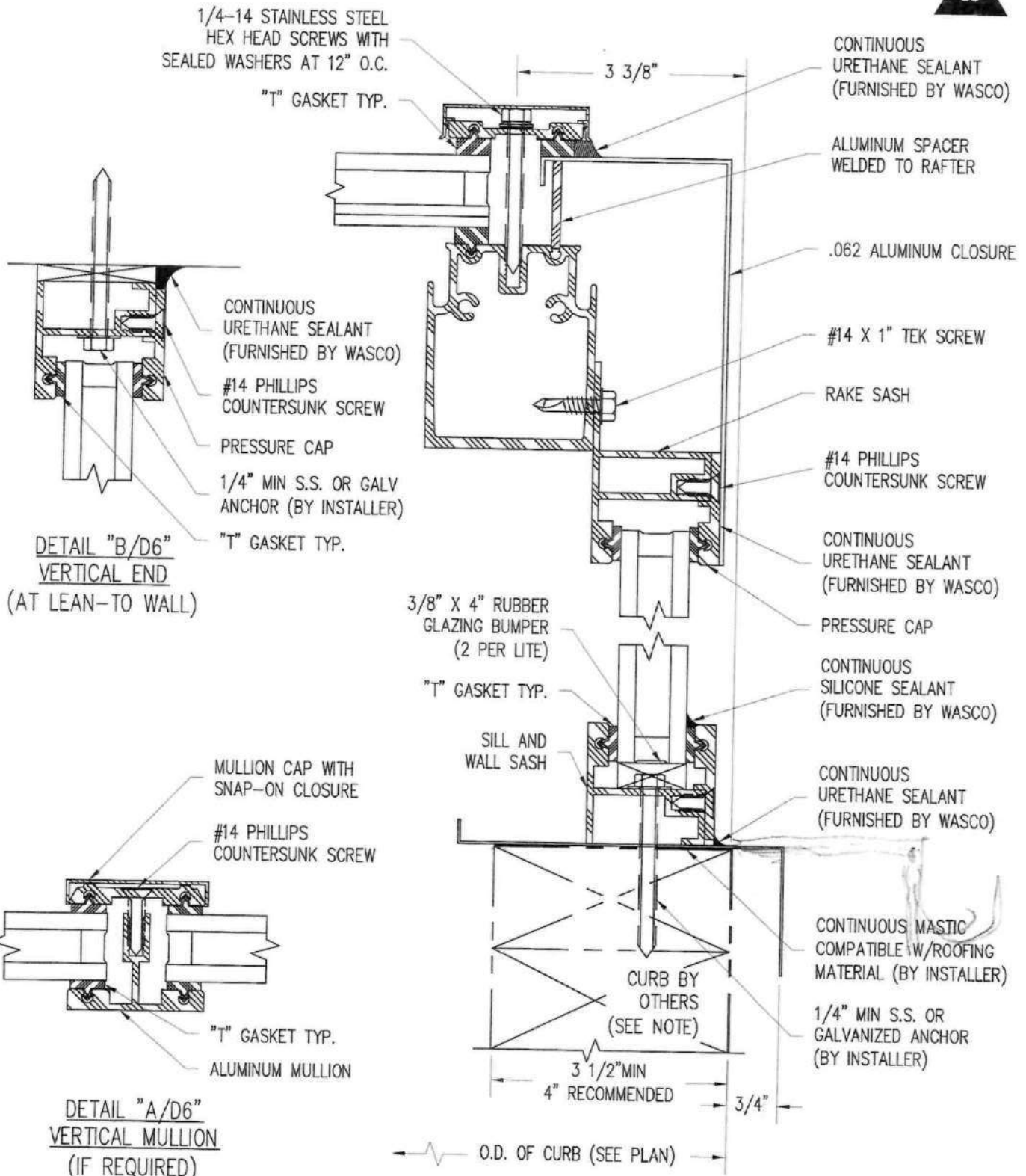
**Wasco** Part of  
**VELUX** Commercial

VELUX Wells  
 85 Spencer Dr, Unit A  
 Wells, ME 04090  
 1-800-88-VELUX  
 veluxusa.com

PINNACLE 350 OR 600  
 (PYH)  
 EXTENDED PYRAMID  
 PLAN VIEW

**PLN2**

**SKYLIGHT**



**SKYLIGHT DETAILS**

Since 1935



**Wasco**  
SKYLIGHTS

Wasco Products, Inc.  
22 Pioneer Avenue, P.O. Box 351  
Sanford, ME 04073  
Fax: 207-490-5270 sales@wascoproducts.com  
800-388-0293 www.wascoproducts.com

**Pinnacle 300  
Vertical End Detail**

**D6**