

An aerial photograph of a city street intersection, likely Andrew Square, with a semi-transparent blue overlay. The image shows various buildings, including a prominent curved building on the left, and a street with a roundabout. The text is centered over the image.

# ANDREW SQUARE SAFETY PROJECT VIRTUAL KICKOFF

April 29, 2026



# WELCOME

---

- ▶ This meeting will be recorded.
- ▶ If you speak Spanish and you prefer to listen to the meeting in Spanish, press the Interpretation button to join the Interpretation channel



The image shows a meeting control bar at the bottom of a screen. The bar contains several icons and labels: Unmute, Start Video, Security, Participants (5), Chat (with a red notification bubble), Share Screen, Record, Interpretation, Reactions, and a red Leave button. The Interpretation button is highlighted, and a dark menu is open above it. The menu is titled "Listen In:" and contains the following options: Original Audio (Interpretation off) with a checkmark, English, Chinese, and Spanish. At the bottom of the menu is the option "Mute Original Audio". A black arrow points from the top of the menu down to the Interpretation button in the control bar.

Listen In:

- ✓ Original Audio (Interpretation off)
- English
- Chinese
- Spanish

Mute Original Audio

Unmute Start Video Security Participants 5 Chat Share Screen Record Interpretation Reactions Leave

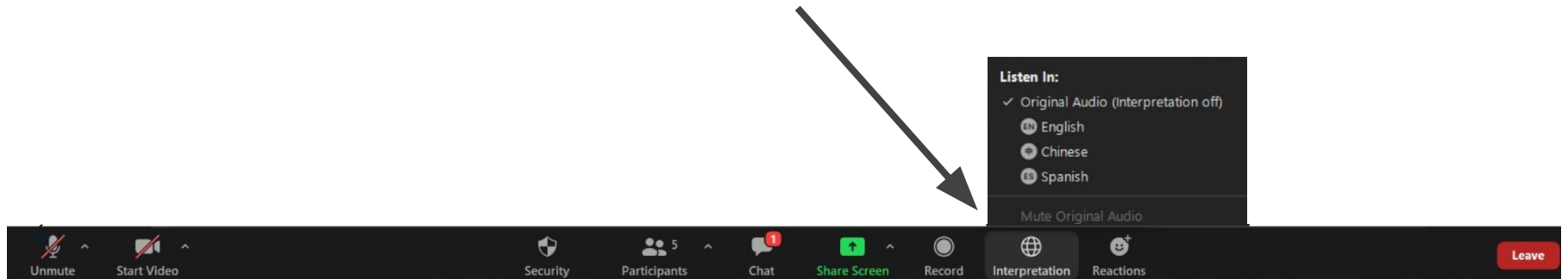
# WELCOME

---

## INTERPRETATION

**Spanish:** Para la interpretación en español:

1. Vaya a la parte baja de la pantalla, en la barra horizontal, y presione la tecla “Interpretation”.
2. Luego seleccione el idioma que desea escuchar.
3. Después de seleccionar, usted entrará a la reunión en el idioma “Español”.



# WELCOME

---

- ▶ Your microphones are turned off to start. You will need Ask to Unmute to speak. Joining via phone? Press \*6 to unmute.
  
- ▶ You can use non-verbal feedback options. Use the “Q&A” button to ask us questions, or share your thoughts using the Chat. If you called into the meeting, use \*9 to raise your hand.

# WELCOME & INTRODUCTIONS

---

## CITY OF BOSTON

- Jake Berman
- Lydia Hausle
- John Monacelli
- Xavier Lopez
- Maddie Webster
- Nick Osborne
- Isaac Prizant
- Amanda Caparoso
- Lydia Polaski

# PROJECT PURPOSE

## SAFE STREETS FOR ALL

- The City won a Federal grant for safety improvements for all users of Andrew Square.

The grant's purpose is to **reduce crashes and serious injuries**.



# TONIGHT'S PURPOSE

---

1. Introduce the project and share what we're learning
2. Hear about your experiences moving through Andrew Square, however you travel
3. Inform how we should use goals and metrics to weigh future design alternatives in the coming months



**Andrew Square in the 1950s**

*Credit: Anthony Sammarco, Facebook*

# WELCOME & INTRODUCTIONS

---

## CONSULTANT TEAM

- Jason Sobel, PE, PTOE, (He/Him)  
Director of Transportation Engineering, Nitsch Engineering
- Christi Apicella, AICP, (She/Her)  
Senior Principal Planner, Kittelson & Associates, Inc.
- Jenn Goldson, AICP, (She/Her)  
Lead Facilitator, JM Goldson LLC

# **WE WANT TO HEAR FROM YOU TONIGHT**

## **HERE ARE A FEW TOOLS TO MAKE PARTICIPATION EASY:**

### **Live Polls**

Quick polls to gather input and understand community priorities.

### **Q&A**

Submit questions anytime. We will respond.

### **Chat**

Share reactions and ideas as we go

### **Raise Your Hand**

Make comments or ask a question at the end of the presentation

# INTERACTIVE POLL #1

---

## WHO IS HERE TONIGHT?

*What's your relationship with Andrew Square?*

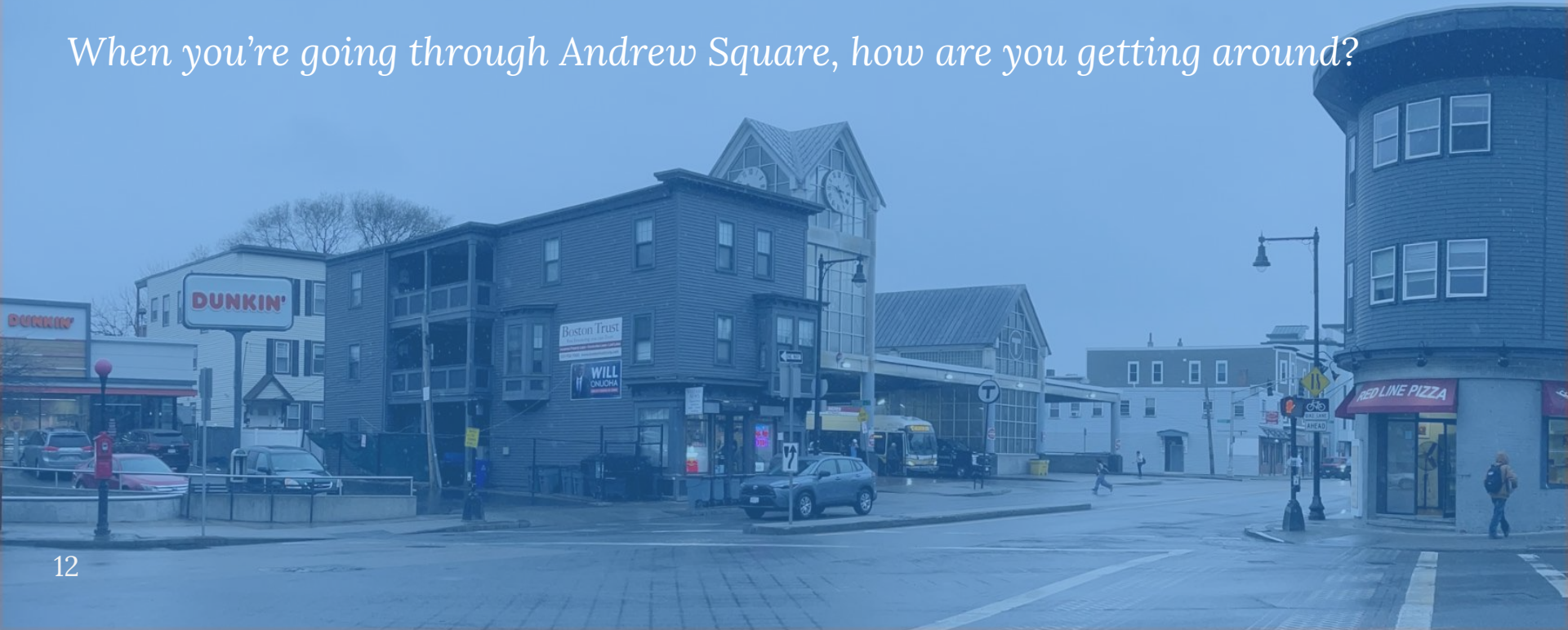


# INTERACTIVE POLL #2

---

## HOW DO YOU TRAVEL?

*When you're going through Andrew Square, how are you getting around?*



# INTERACTIVE POLL #3

---

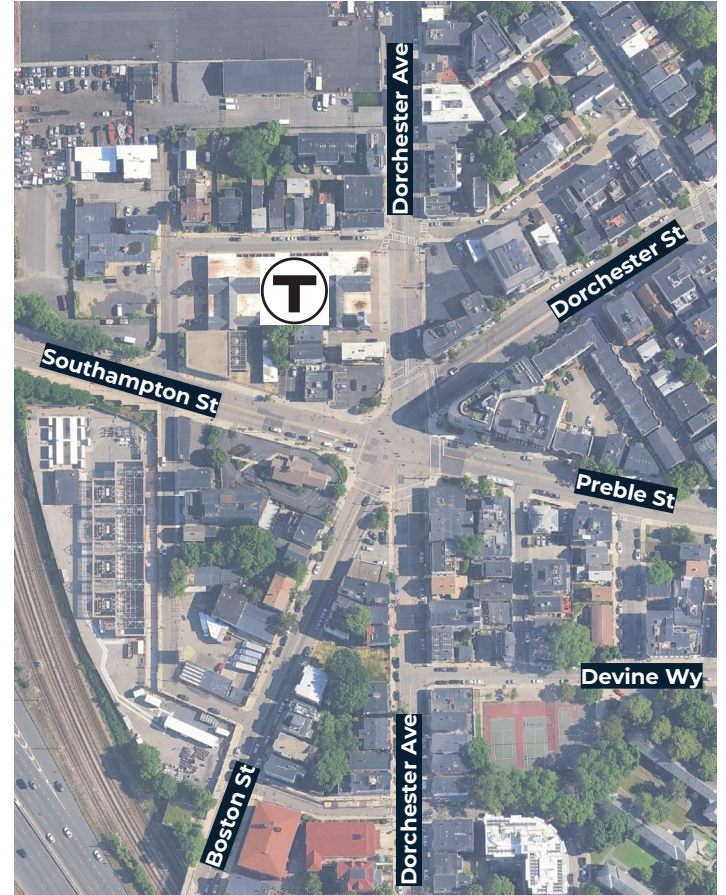
## HOW OFTEN DO YOU TRAVEL THROUGH ANDREW SQUARE?



# PROJECT OVERVIEW

## WHY ANDREW SQUARE?

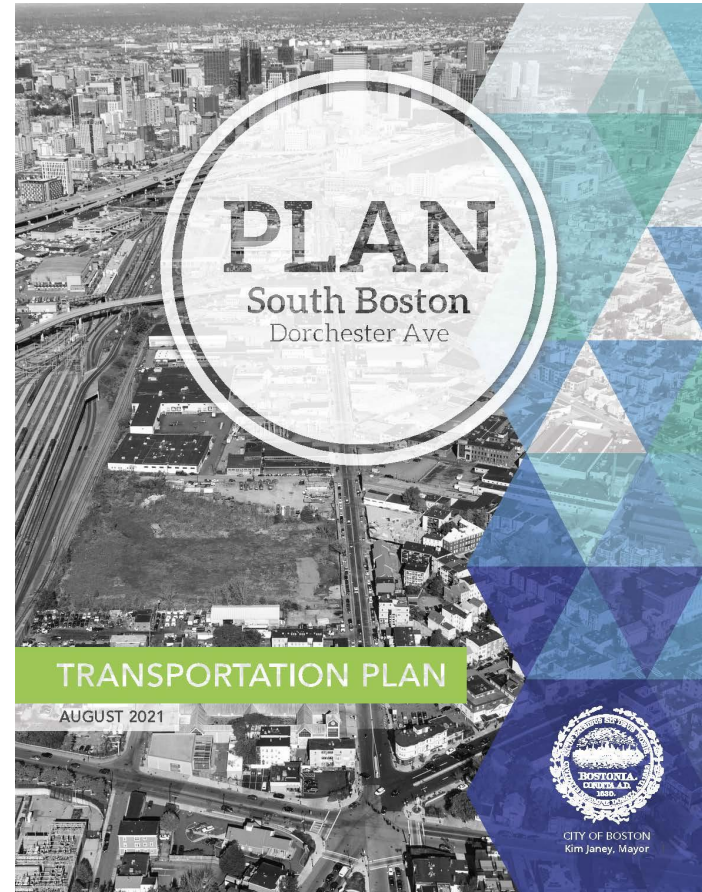
- Major transit hub
- Part of Boston's High Pedestrian and High Bicycle Crash Networks
- Complex six-leg intersection
- High volumes across all users
- More homes and jobs coming to the area



# PRIOR PLANNING

## PLAN: SOUTH BOSTON DORCHESTER AVENUE TRANSPORTATION PLAN

- Completed August 2021
- Included a range of options for future improvements



# EXISTING CONDITIONS

---

WHAT HAVE WE LEARNED SO FAR?



# CRASH HISTORY

---

**52 crashes  
between 2022  
and 2025.**



*\*Total does not  
include unreported  
crashes or near misses*

# CRASH HISTORY

---

## NUMBER OF REPORTED CRASHES BY MANNER OF COLLISION

**17**  
angle  
crashes



**13**  
rear-end  
crashes



**11** sideswipe,  
same direction  
crashes



# CRASH HISTORY

---

The crash rate is more than 2x the state average.



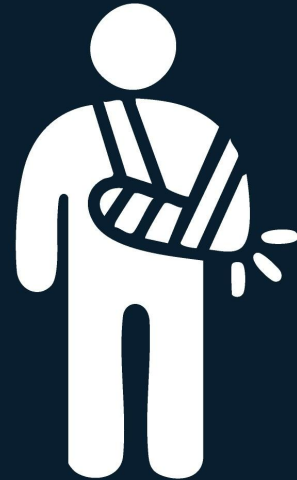
## Crash Rate per Million Entering Vehicles (MEV)

MassDOT District 6 Average	0.71
Statewide Average	0.78
<b>Andrew Square, 2022-2025</b>	<b>1.57</b>

# CRASH HISTORY

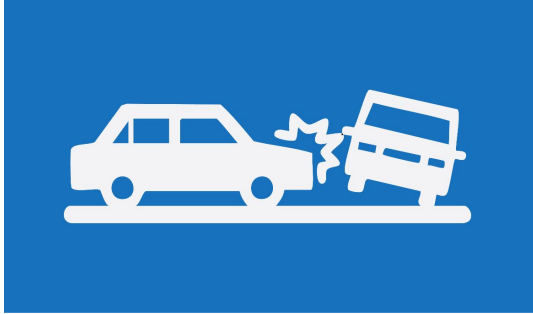
---

**35% of crashes  
involved injuries,  
including  
1 fatality.**



# CRASH HISTORY

---



29% of vehicle-vehicle crashes resulted in an injury



70% of crashes involving people outside cars resulted in injuries:

- Cyclists, pedestrians, moped, and skateboard
- One fatal crash involved a pedestrian

# INTERACTIVE POLL #4

---

DOES THE CRASH HISTORY MATCH YOUR PERCEPTION?



# EXISTING CONDITIONS

---

## CONFUSING DESIGN

The current design (lanes, turns, and signals) is confusing and makes it difficult for drivers to know where to go.



# EXISTING CONDITIONS

## CONFUSING DESIGN



# EXISTING CONDITIONS

---

## DRIVER SAFETY

Drivers often speed, rush, or act aggressively here.

Because of peak-hour traffic, drivers **frequently run red lights** or **take risky turns** to avoid additional delays.

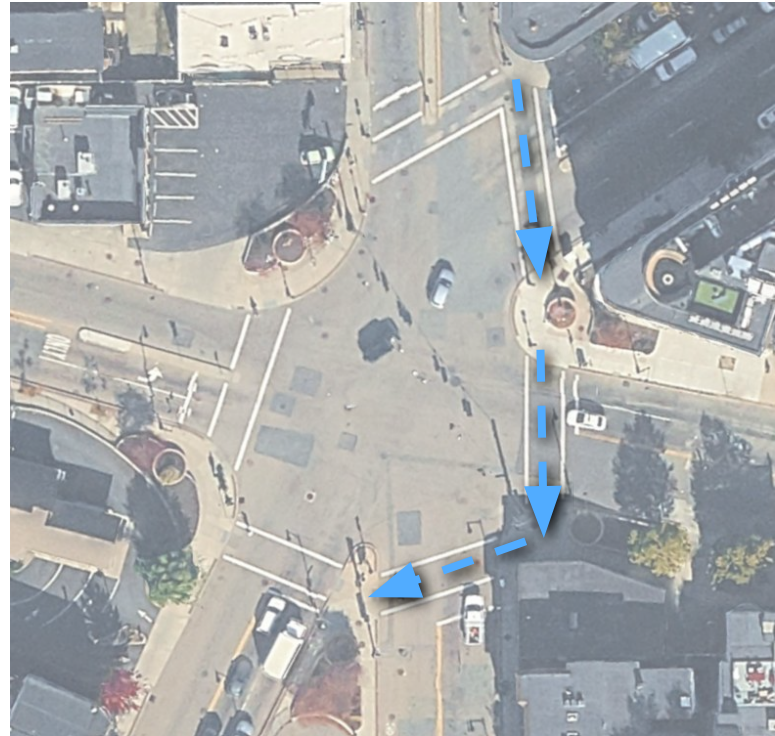


# EXISTING CONDITIONS

---

## DIFFICULT TO CROSS THE STREET

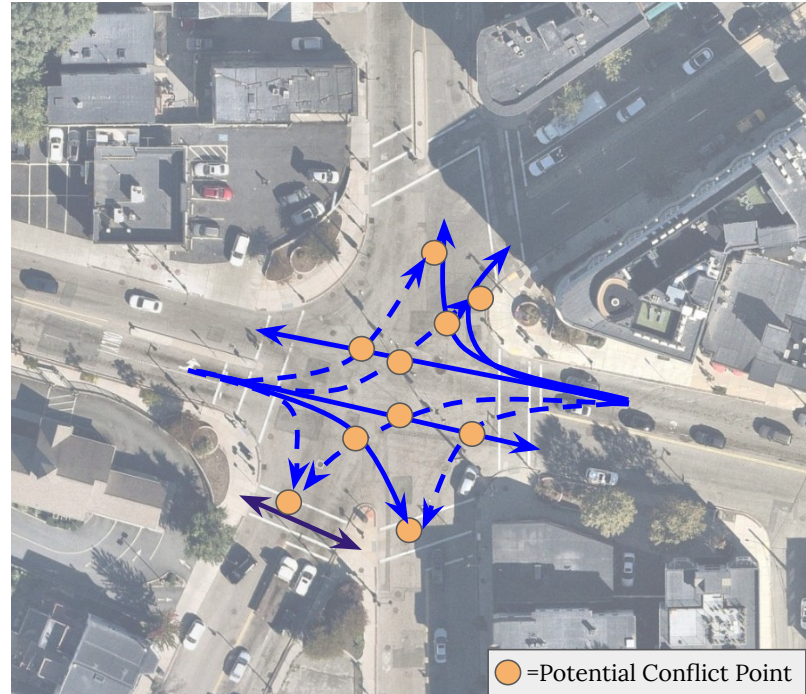
It takes **5 minutes** to cross these three intersection legs in this direction on a Walk signal. Because of the wait, people sometimes cross when they don't have the signal.



# EXISTING CONDITIONS

## CONFLICTS WITH TURNING VEHICLES

There are **many conflict points** for turning vehicles, both for other vehicles and for people crossing the street.



# EXISTING CONDITIONS

---

## LACK OF BIKING SAFETY

Biking through the square feels **unsafe and uncomfortable**, and bicyclists will run red lights or cross away from crosswalks if it feels safer.

There are no dedicated bike facilities at the intersection.



# WHAT THE DATA DOESN'T SHOW US

---

- Close calls that don't get reported
- Paths that feel confusing or unclear
- Places where people feel unsafe
- Day to day challenges getting around



# INTERACTIVE POLL #5

---

DO THESE FINDINGS REFLECT YOUR EXPERIENCE?



# INTERACTIVE POLL #6

---

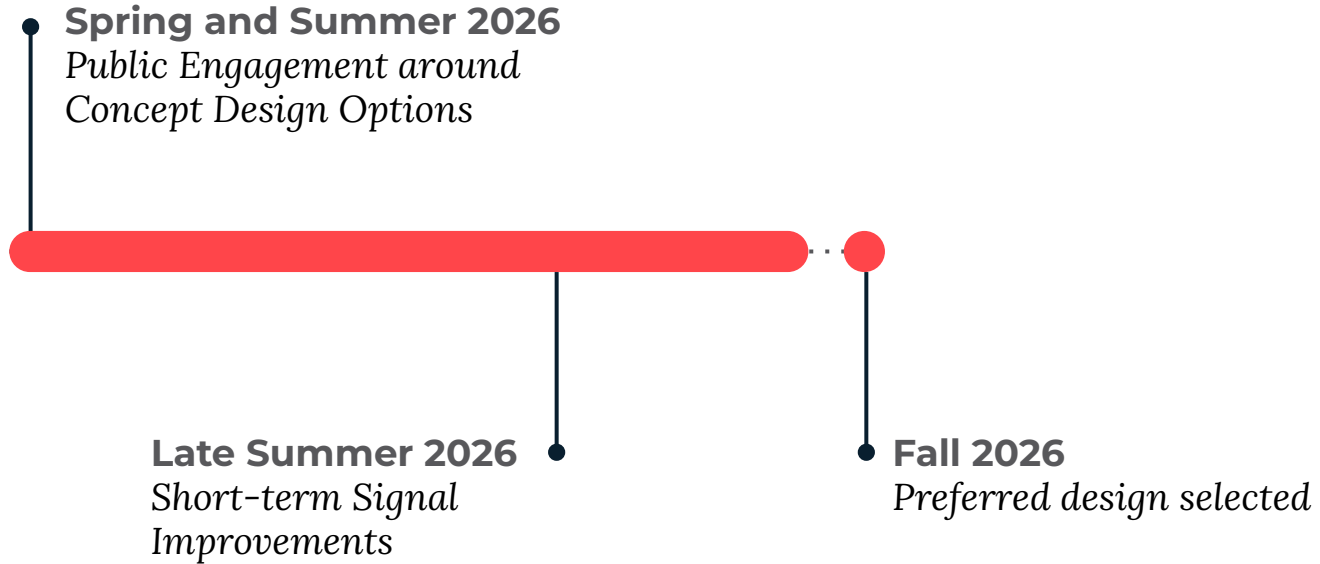
## YOUR EXPERIENCE

*What safety issues have you experienced in Andrew Square?*



# WHAT'S NEXT?

---



# UPCOMING PUBLIC ENGAGEMENT

---

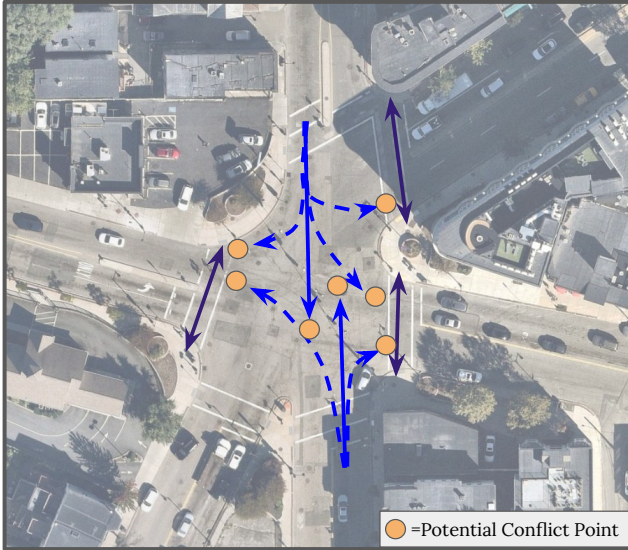
## THIS MEETING KICKS OFF THE PUBLIC PROCESS

*This summer, we're planning:*

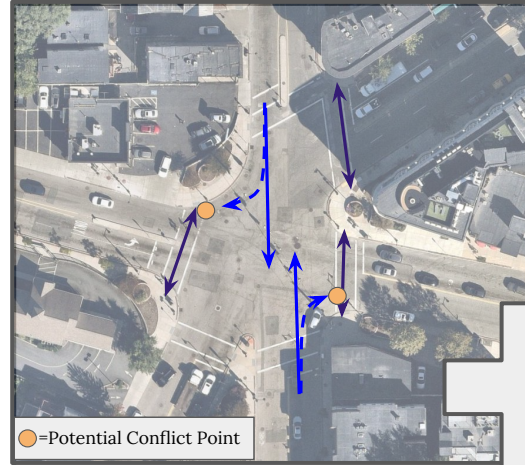
- Focus Groups/Walkshops
- An interactive design workshop
- Online public input

Visit the project website and signup for email updates:  
[boston.gov/andrew-sq-safety](https://boston.gov/andrew-sq-safety)

# NEAR-TERM IMPROVEMENTS: LATE SUMMER



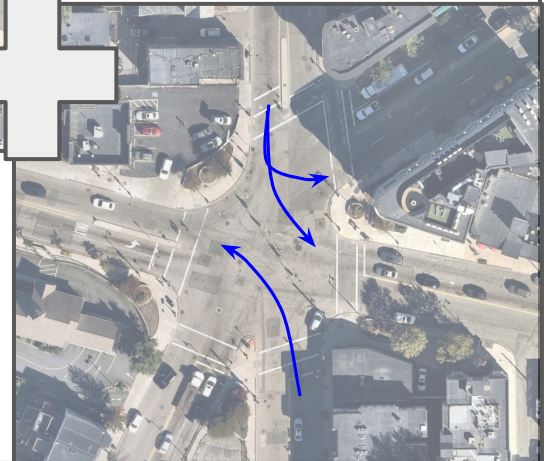
**Current**



**Removing  
Simultaneous  
Lefts**



**Adding  
Protected  
Lefts**



**Proposed**

# UPCOMING RED LINE IMPACTS

---

## CLOSURE EXTENTS & DATES

- May 2-4: Broadway to Quincy Center
- May 14 at 6PM-16: Ashmont to Mattapan
- May 14 at 6PM -18: Broadway to Ashmont
- May 29-31: Broadway to Quincy Center & Ashmont

<https://www.mbta.com/alerts/subway>

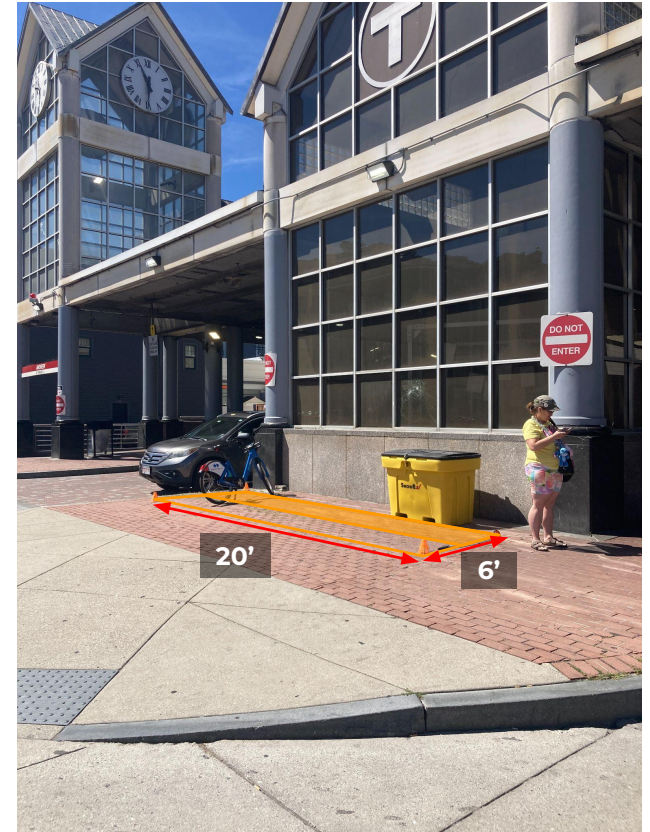
*Check out the MBTA website for the most up to date information!*

## WHY IS THIS HAPPENING AND WHAT ARE WE DOING ABOUT IT?

- The MBTA is doing final testing and commissioning work on the Red Line's new digital signal system to **strengthen service reliability** for riders.
- The City plans to **prioritize** diversion shuttles through traffic signal adjustments and strategic parking removal.

# NEW SITE FOR BLUEBIKES COMING SOON

- Since 2012, a seasonal Bluebikes station has occupied 2 parking spaces outside Sports Connection Bar and Grill.
- We have identified an alternative off-street site for half the station on MBTA property that can stay year-round.
- We are reinstalling the other half of the station in front of Sports Connection Bar and Grill, occupying 1 parking space from Mar/Apr through Nov/Dec.



# INTERACTIVE DISCUSSION

---

WHAT DO YOU THINK ARE THE MOST IMPORTANT SAFETY ISSUES IN ANDREW SQUARE?

WHAT KINDS OF DESIGN IMPROVEMENTS WOULD YOU LIKE TO SEE?

*Use the chat to share your comments or raise your hand if you'd like to speak!*

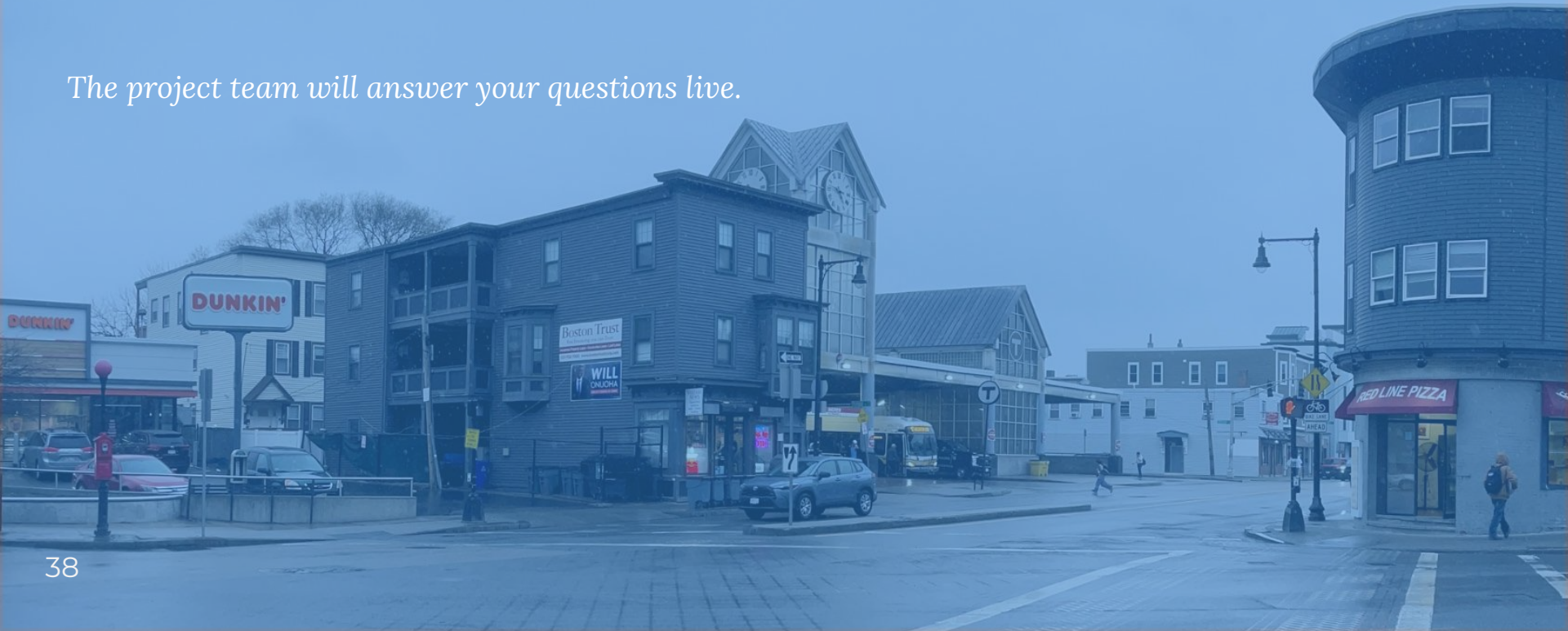


# INTERACTIVE DISCUSSION

---

## Q&A

*The project team will answer your questions live.*



# THANK YOU!

Visit the project website and sign up for email updates:  
[boston.gov/andrew-sq-safety](https://boston.gov/andrew-sq-safety)

**Want to share more ideas?** Visit the interactive input website at [engagement.jmgoldson.com/AndrewSquare](https://engagement.jmgoldson.com/AndrewSquare), or click the link in the chat.