

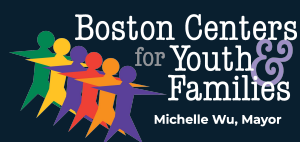


JACKSON MANN HOUSING WITH PUBLIC ASSETS

Community Meeting
May 28, 2026 6pm - 8pm



Mayor Michelle Wu



utile



City of Boston
Public Facilities

TRANSLATIONS

Translations for this meeting are available live in the following languages:

- Chinese (Cantonese)
- Russian
- Spanish
- Portuguese



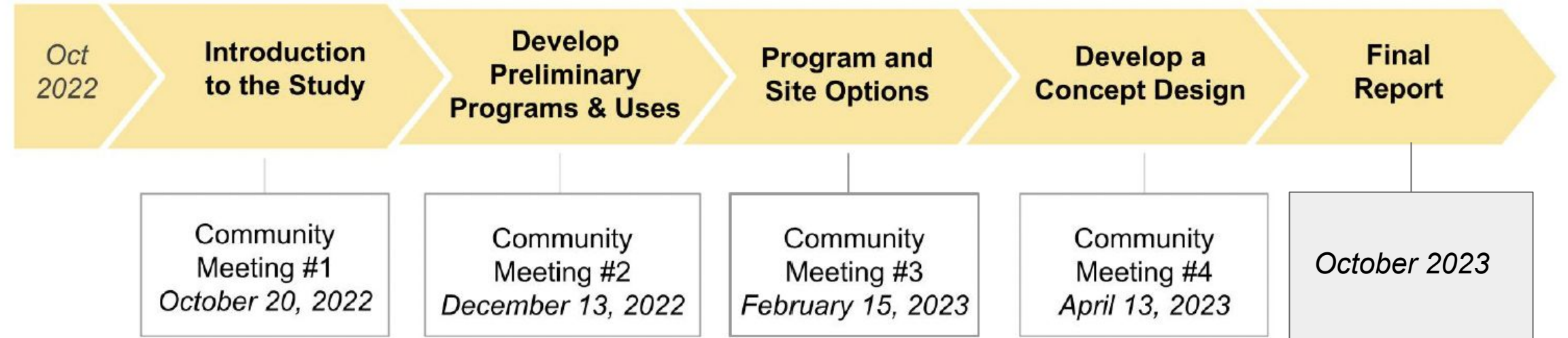
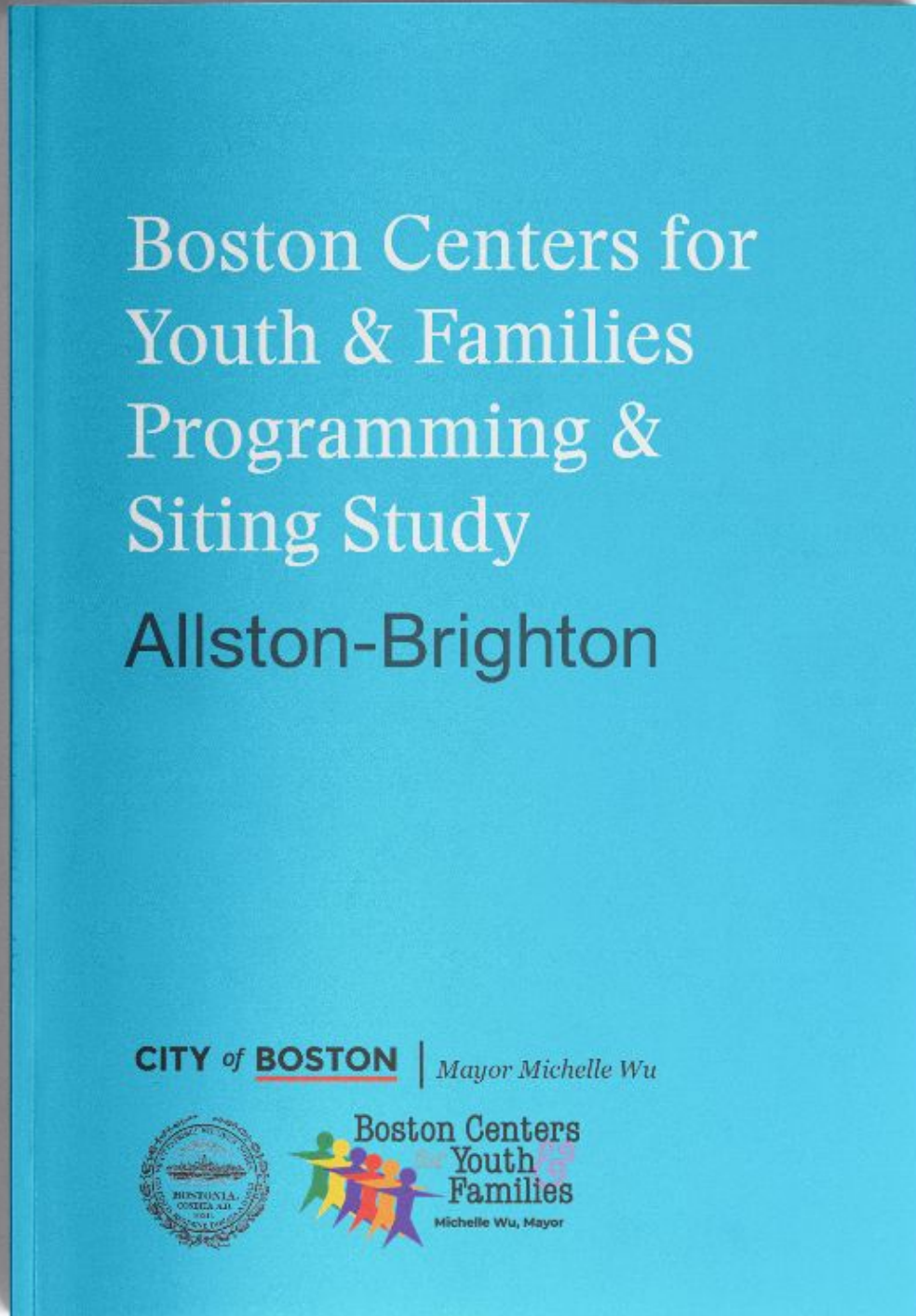
WELCOME & AGENDA

Community Meeting
May 28, 2026

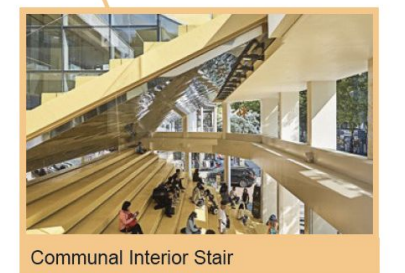
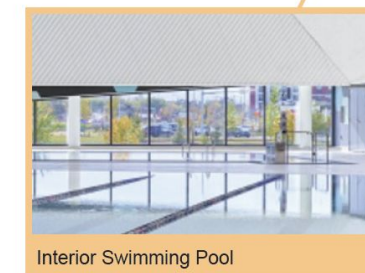
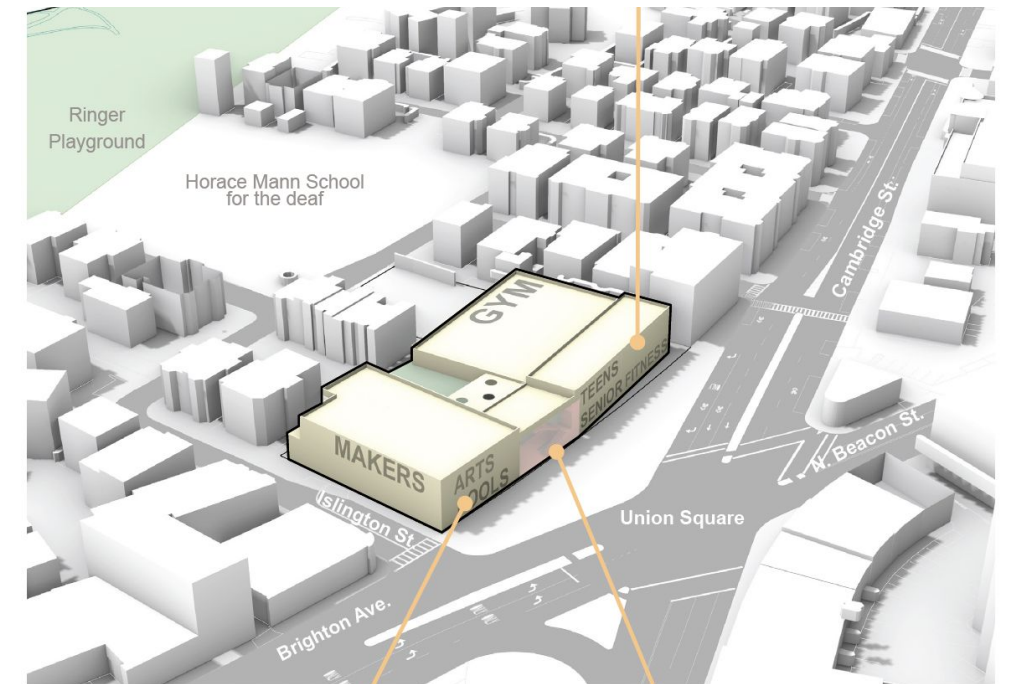
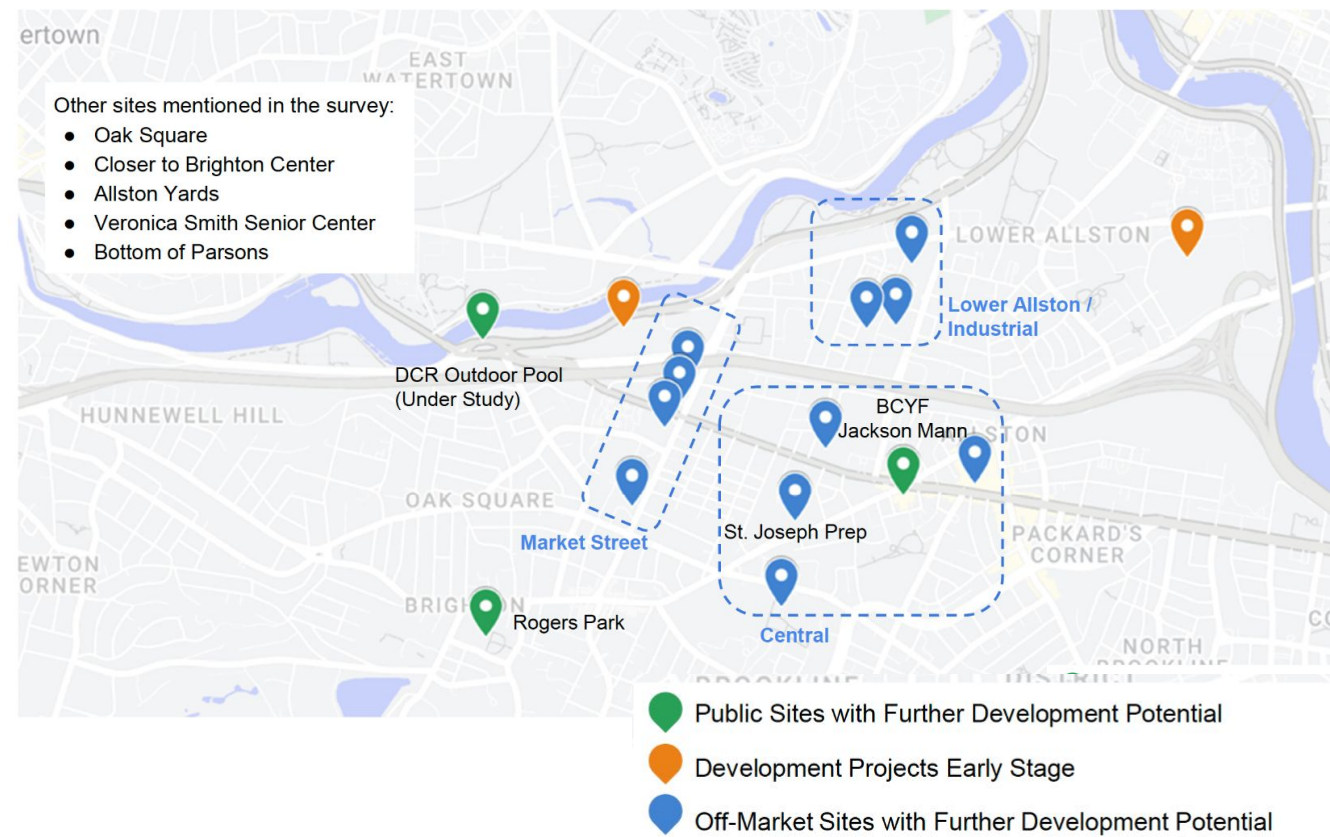
1. Where We've Been
2. Where We Are Now
3. Review Housing with Public Assets Study
4. Next Steps + Timeline
5. Discussion



WHERE WE'VE BEEN



Preliminary Site Locations for Study



WHERE WE ARE NOW

- The Jackson Mann site is an incredible site with lots of potential for the good it can do in the neighborhood. While BPS has been evaluating its future facility needs in the community, we have also heard questions from residents about the possibility of housing on the site.
- In September 2025 the City of Boston commissioned an addendum to the 2023 Programming and Siting study. That addendum was completed and released on April 29, 2026.
- The goals of the addendum were:
 - Test-fit housing on the Jackson Mann site with a BCYF community center and, in some scenarios, also with a BPS elementary school.
 - Test the architectural feasibility of building housing with a community center.
 - Provide high level cost estimates and proformas for a range of housing affordability mixes.
 - Determine if cross-subsidy is possible from housing on site to support the community center capital project.



CONTEXT: ONGOING PLANNING IN ALLSTON - BRIGHTON



ALLSTON VILLAGE

EXISTING CONDITIONS: WHAT IT'S LIKE TODAY

Recent development has mostly been outside of the Allston Village area to the north.

Mad Oak Studios Graduate School Symphonic Acoustics

Low- to medium-scale residential surrounds a popular and amenity-rich commercial center.

There are many vehicle-oriented low-story uses.

Several high-frequency bus routes and the Green Line stop make this a well-connected area.

Jackson Mann BCYT

Brighton Music Hall

Salvo Y Center Allston Village Main Streets Boston Martial Arts Center

Harvard Ave and Brighton Ave have historically been home to a lot of arts and culture establishments.

441 Cambridge St | 25-29 Harvard Avenue | 1 Harvard Ave (Great Scott) | Jackson Mann Community Center | 388 Cambridge St | CVS Parking

VISIONS FOR CHANGE: WHAT WE'VE HEARD SO FAR

LEVERAGING UNDERUTILIZED SPACE

Allston Village has several repair garages and surface parking lots. These and other spaces may be opportunities to deliver desired amenities and housing to the area.

"Allston Village should be a marquee destination, [with] a diverse range of businesses serving the neighborhood."

TRANSITIONING SCALES OF DEVELOPMENT

New, larger developments can provide needed housing and amenities. The City wants to ensure that the transition between these areas and lower-scale residential areas is seamless.

"It makes sense to allow for the development of more housing in areas that are already densely populated and well served by transit."

INVESTING IN ARTS & CULTURE

Community and cultural assets like the Jackson Mann Community Center are in need of public and private investment!

"We need a community center - please fund the Jackson Mann replacement!"

The ongoing Allston-Brighton Community Plan is a land-use plan focused on improving housing affordability, bettering access to open space, supporting arts and culture, and improving transportation. This Housing with Public Assets study will help inform the final recommended zoning for Allston-Brighton.



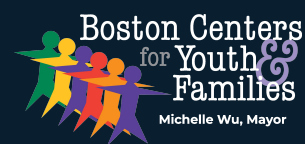
REVIEW HOUSING WITH PUBLIC ASSETS STUDY



NEIGHBORHOOD CONTEXT AND MARKET REVIEW



Mayor Michelle Wu

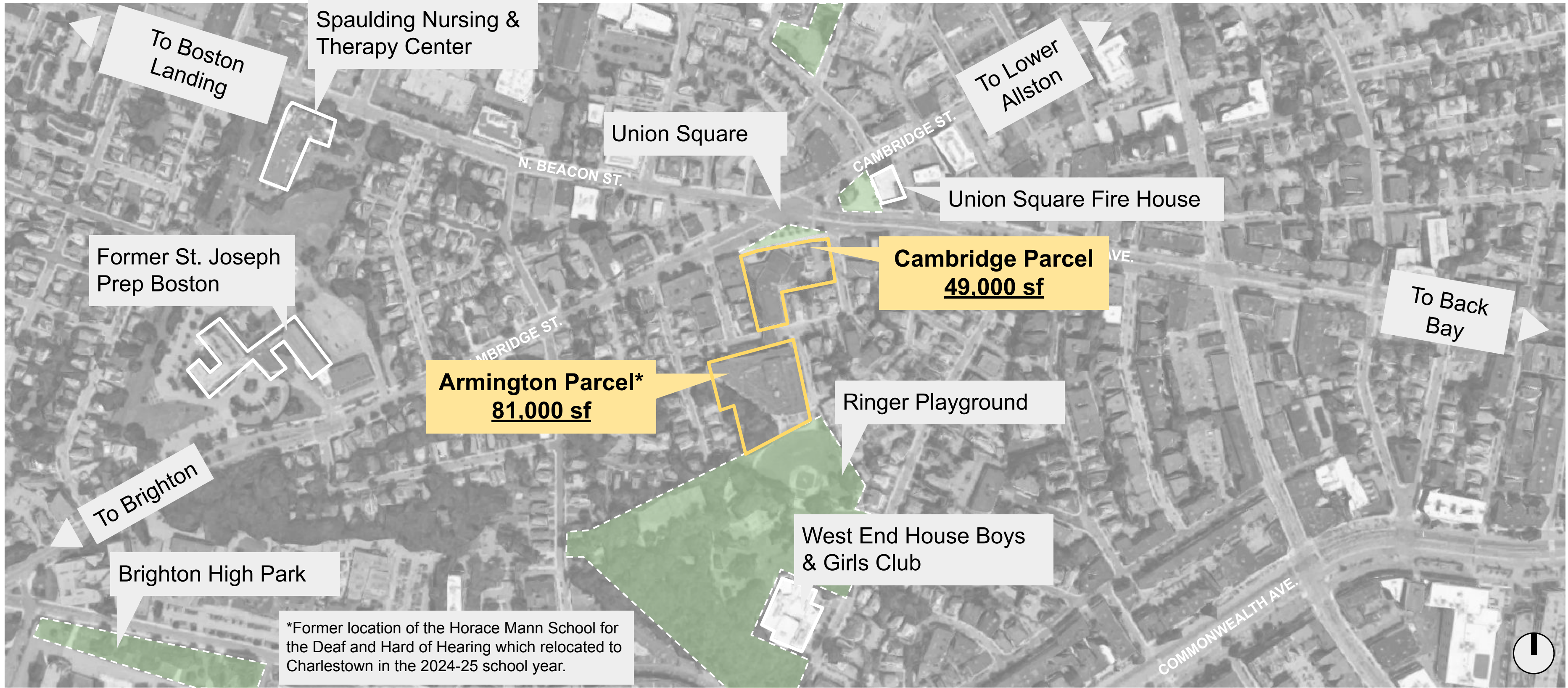


utile



City of Boston
Public Facilities

SITE CONTEXT



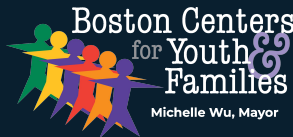
PRIVATE DEVELOPMENT: MARKET DEMAND

Demand Strength

- **Retail:** Demand for retail space is high in the Boston area, with a historically low vacancy rate of 2.6% as of Q2 2025 and rents are projected to grow above the long-term average. Retail demand in the urban core is increasingly **experience-oriented**, such as dining and entertainment.¹
- **Residential:** Demand for rental apartments remains high even with significant new inventory. Vacancy rates remain low, around 0.5% or less (August 2025), roughly in line with the Boston area as a whole. **Uncertainty around international student enrollment poses a risk** for future rental demand in this student-heavy area.² **The neighborhood has lower homeownership rates than the City as a whole** - 90% and 76.5% of Allston and Brighton residents respectively are renters.⁵
- **Medical Offices:** Some local brokers are bullish on medical office demand in the area, especially given proximity to Boston Medical Center Brighton. Medical spa demand may also be strong.
- **Offices:** The Urban Ring West market in which Allston-Brighton is located has one of the strongest office markets in the Boston area, with vacancy rates at 5.6% and strong positive net absorption.
- **Hotels and Hospitality:** Boston’s hotel market is undersupplied; However, significant new inventory is coming online in Allston, with two hotels currently under construction.
- **Standalone Paid Parking:** Demand in the area is driven by **events, dining, and entertainment** on evenings and weekends, with minimal commuter park-and-ride activity.
- **Institutional and Education:** Demographic shifts and political headwinds are challenging higher education and institutional uses are reliant on public funding.



Source: (2) BostonPads, (2) Cushman and Wakefield, (1) Marcus & Millichap, (4) Wronka Commercial Real Estate (5) BPDA Boston in Context



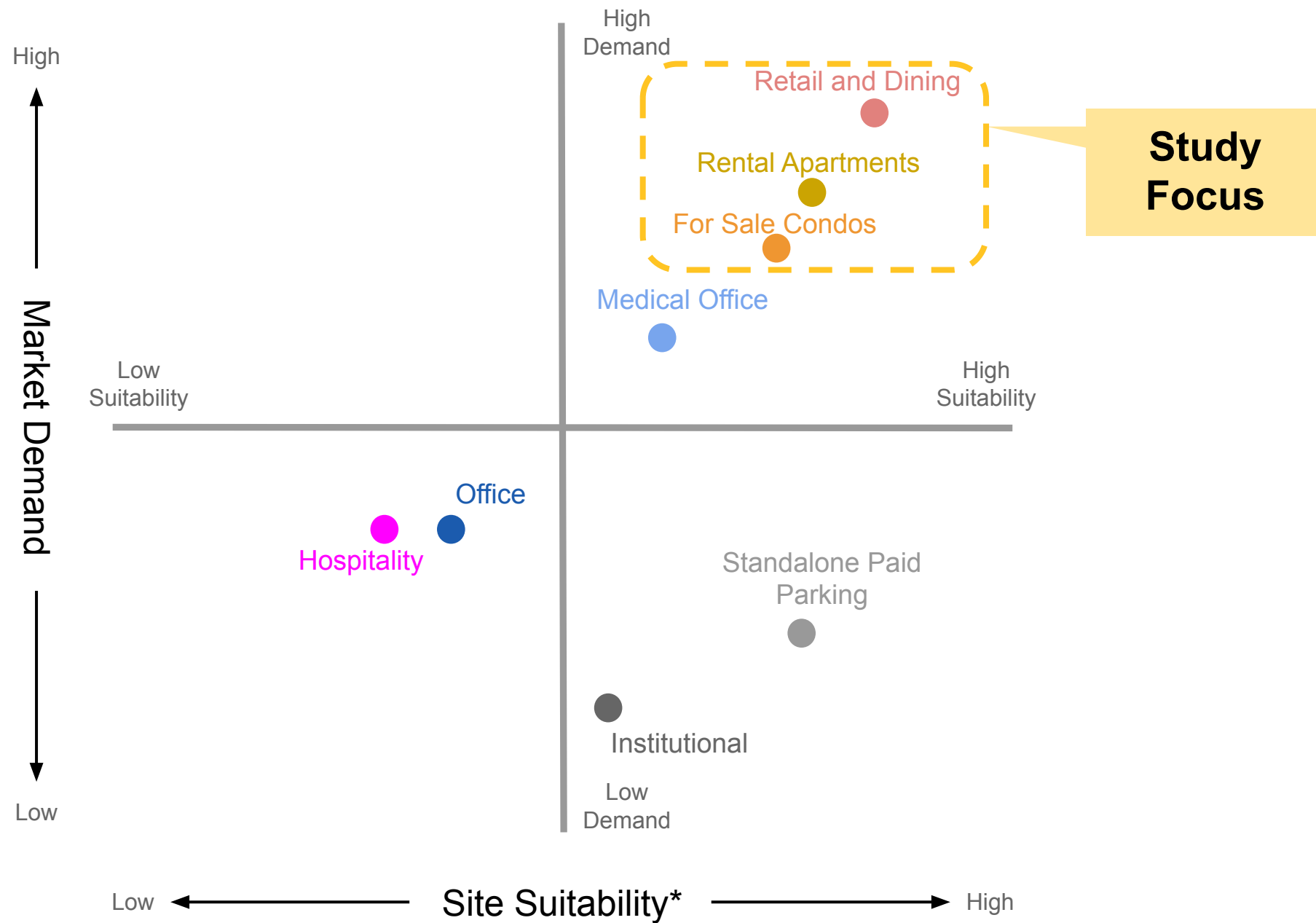
PRIVATE DEVELOPMENT: CIVIC USES COMPATIBILITY

Land Use	Compatibility	Opportunities	Challenges
Rental Apartments		Residents could benefit significantly from colocation with civic uses. Simpler to manage and maintain.	Affordable rentals may need subsidy. Does not facilitate homeownership. Potential for high parking needs.
For Sale Condos		Residents could benefit significantly from colocation with civic uses. Encourages homeownership and long-term residence in the neighborhood.	Creates complex management and maintenance issues. Potential for high parking needs. Ownership with civic use is complex. Difficult to make affordable home ownership developments financially feasible.
Retail and Dining		Businesses could benefit from colocation with civic uses drawing foot traffic. Provides additional tax revenue	Need for ground floor street frontage on the Cambridge Street parcel could displace some civic uses.
Hospitality		Could provide higher tax revenue and support local business in the area.	Need for significant ground floor space for lobbies and other amenities. High parking demand.
Institutional		Strong synergy with civic uses. Could provide resources which bolster public education and recreation.	Tax revenue could be limited for nonprofit institutions. Space demands are uncertain depending on the precise use.
Office		Needs minimal ground floor/ fits easily above civic uses.	Civic use could limit the available space for Class A office amenities, such as lobbies and green space.
Medical Office		Needs minimal ground floor frontage. Could benefit from colocation with school and recreation facilities.	Possible access and parking challenges for patients.
Paid Parking		Could improve access to civic facilities, especially for those with reduced mobility. Does not need ground floor frontage.	Creates an unwelcoming streetscape if not designed well and/or combined with active ground floor uses.



PRIVATE DEVELOPMENT LAND USES

Cambridge Street Parcel



Armington Street Parcel



*Site suitability is estimated by how well these private uses complement, support and would benefit from nearby civic uses.



PRIVATE DEVELOPMENT LAND USES: KEY TAKEAWAYS

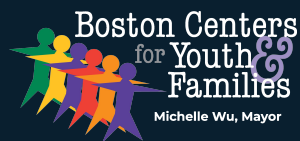
- **Planned private-market uses with public assets in Boston have thus far included housing and libraries** - the community center program is far larger in terms of its size and might similarly be replicated.
- **Experience-based retail or restaurant space would be a suitable use for the Cambridge Street Parcel.** Market demand for dining and entertainment space is strong. However, such uses demand ground floor street frontage that may displace civic use.
- **Both parcels are suitable for residential use.** Residents would benefit from being co-located with a public school or recreational facilities. Most demand in the student-heavy area is for rental apartments, but new for-sale condos could help facilitate homeownership opportunities.
- **Medical office opportunities may exist on the Cambridge Street parcel,** but market demand likely not as strong as retail and residential.
- **An institutional anchor** like a private school or higher education uses **could also support the site's civic uses, however many institutions are facing significant headwinds** and opting to lease space rather than acquire it.
- **A standalone paid parking garage is likely not viable** unless combined with uses that generate parking demand, such as market-rate residential, office, dining, or entertainment.



BASIS OF DESIGN



Mayor Michelle Wu



utile



City of Boston
Public Facilities

WHAT WE'VE LEARNED SINCE THE 2023 STUDY

BCYF Grove Hall and North End have been designed and are going into construction. Learning from these developed designs, the community center program was updated:

- A 5-lane, 25-yard swimming pool with a zero-entry ramp meets BCYF's needs
- Flexible classrooms that can meet many program needs are most useful
- A flat-floor community room with A/V and lighting for presentations is most flexible



BASIS OF THIS 2026 STUDY

BCYF Community Center

- Community room with rehearsal capabilities
- Community kitchen
- Classrooms
- Senior Center
- Teen Center
- Art & Makerspace Rooms
- Gym with 2 courts
- Fitness Studios
- Locker Rooms
- 1 Pool or No pool

1 Pool - 57,000 gsf

No pool - 43,000 gsf

PreK-6 Community Hub School

- 712 student enrollment
- Community Hub School
- Grades PreK-6
- Special Ed
- Art, Music & Media Center
- Gym Spaces
- Cafeteria
- Auditorium

121,000 gsf

Affordable Housing

- 1 bed / 1 bath:
 - 35% of total
 - 600 - 650 sf
- 2 bed / 1 bath:
 - 55% of total
 - 750 - 800 sf
- 3 bed / 2 bath:
 - 10% of total
 - 1,000 - 1,050 sf

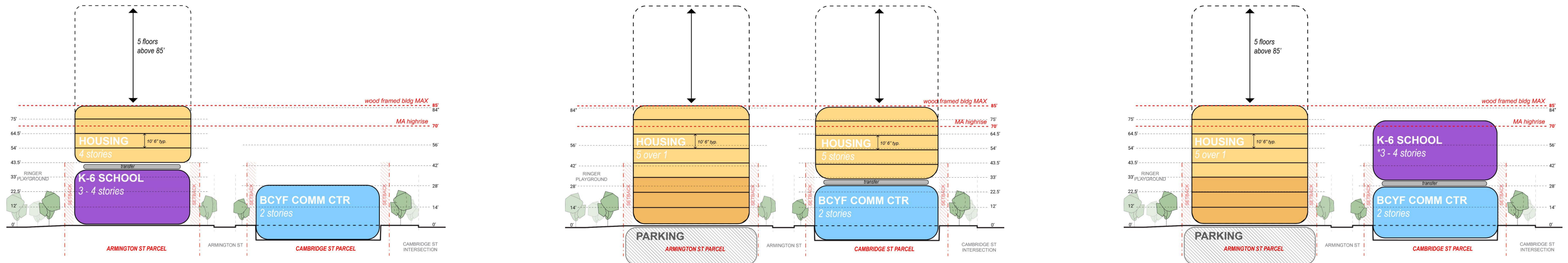
Unit sizes and types reflect a typical LIHTC funded project.

Market-Rate Housing

- Studio / 1 bath:
 - 35% of total
 - 475 - 520 sf
- 1 bed / 1 bath:
 - 35% of total
 - 625 - 675 sf
- 2 bed / 1 bath:
 - 30% of total
 - 725 - 800 sf

Unit sizes and types reflect recent market-rate multi-family projects in Boston.

INITIAL OBSERVATIONS

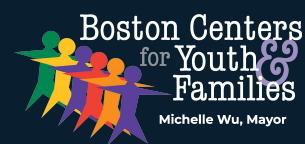


- Stacking dissimilar programs on top of one another proved undesirable/infeasible.
 - Introducing housing above the large open spaces of the BCYF and BPS buildings (for example the gymnasium, swimming pool and cafeteria) required significant, expensive and ultimately infeasible structural solutions.
 - Stacking market-rate housing and subsidized affordable housing proved financially complex and infeasible for this study.
- BCYF and BPS buildings need separate and distinct entrances.
- High-rise construction requiring steel or concrete structural systems are currently financially prohibitive for multi-family housing. This study uses wood-framed structural systems with a steel podium less than high-rise height (maxing out at 6 stories total).

TEST FITS AND FINANCIAL ANALYSIS



Mayor Michelle Wu



utile



City of Boston
Public Facilities

WHAT IS A TEST FIT?

What is a test fit?

A three-dimensional test of the uses and activities on a particular site.

Disclaimer!

- These are only tests used as proof of concept.
- These are not design proposals.
- Goal of this exercise is to illustrate how a specific site impacts the arrangement of the uses and activities.
- Testing the program on this site does not indicate this is the final site selected - the City will continue to gather feedback after the final report is complete.



WHAT INFORMED OUR FINANCIAL ANALYSIS?

Construction Inputs

- **Construction costs:** the cost paid to a contractor to build the project
- **Soft costs:** design, engineering, legal and project management fees
- **Financing costs:** the costs to borrow money to pay for construction, including interest

Operations Inputs

- **Income:** rent from apartments and retail, parking fees
- **Operating costs:** maintenance, taxes, temporary vacancy

Conclusions

- **Return on cost:** measure of profitability of investment
- **Funding surplus or gap:** does the project generate a surplus to pay for civic uses (for market-rate uses) or does it require a subsidy (for affordable housing)?

Key Metrics

This should be >6% to attract investment

Return on Cost
-.-%

The amount the project could contribute to the civic uses on the site

Potential Subsidy
\$-M

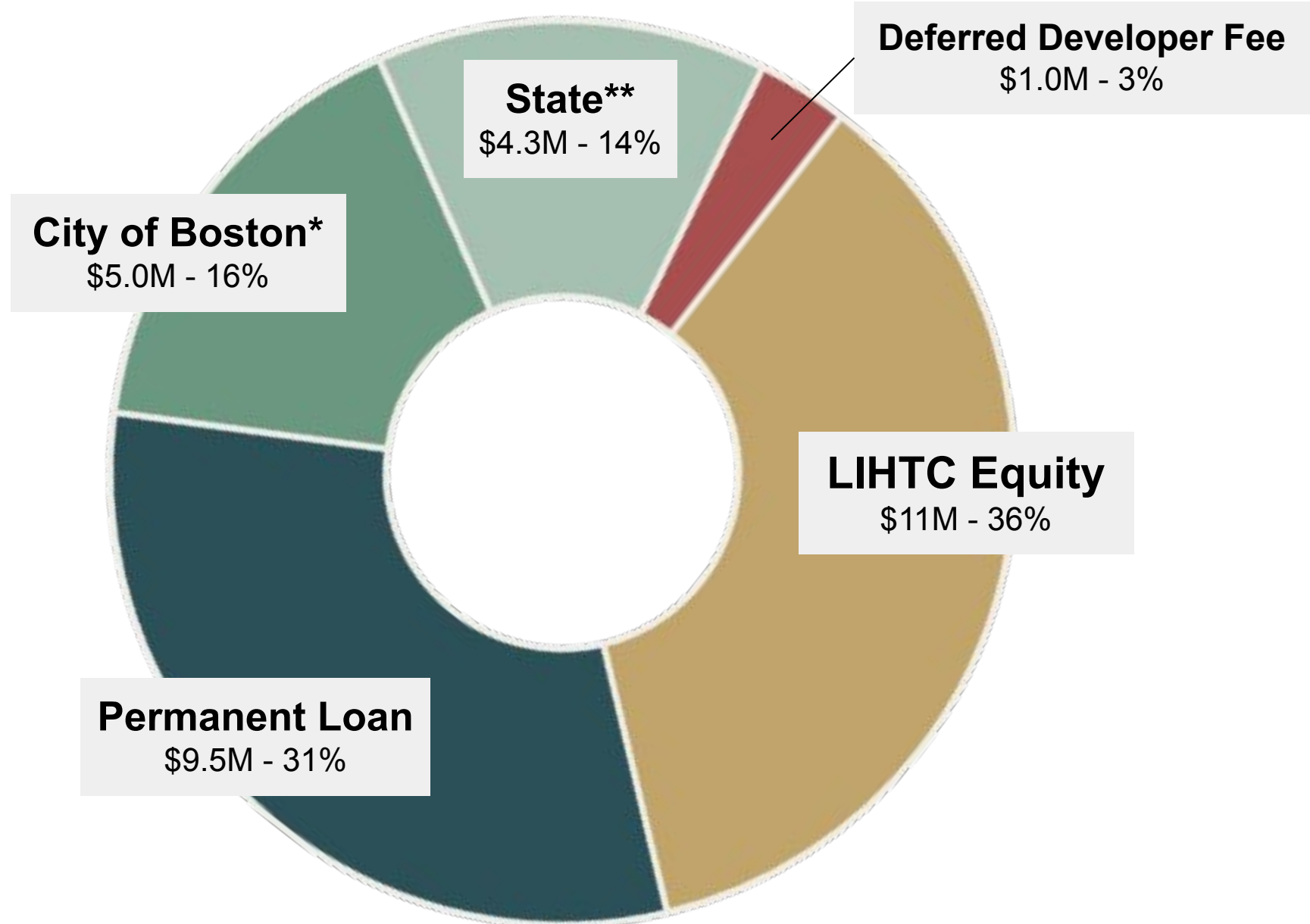
The amount of subsidy required from tax credits or government subsidy

Affordable Housing Funding Gap
\$-M

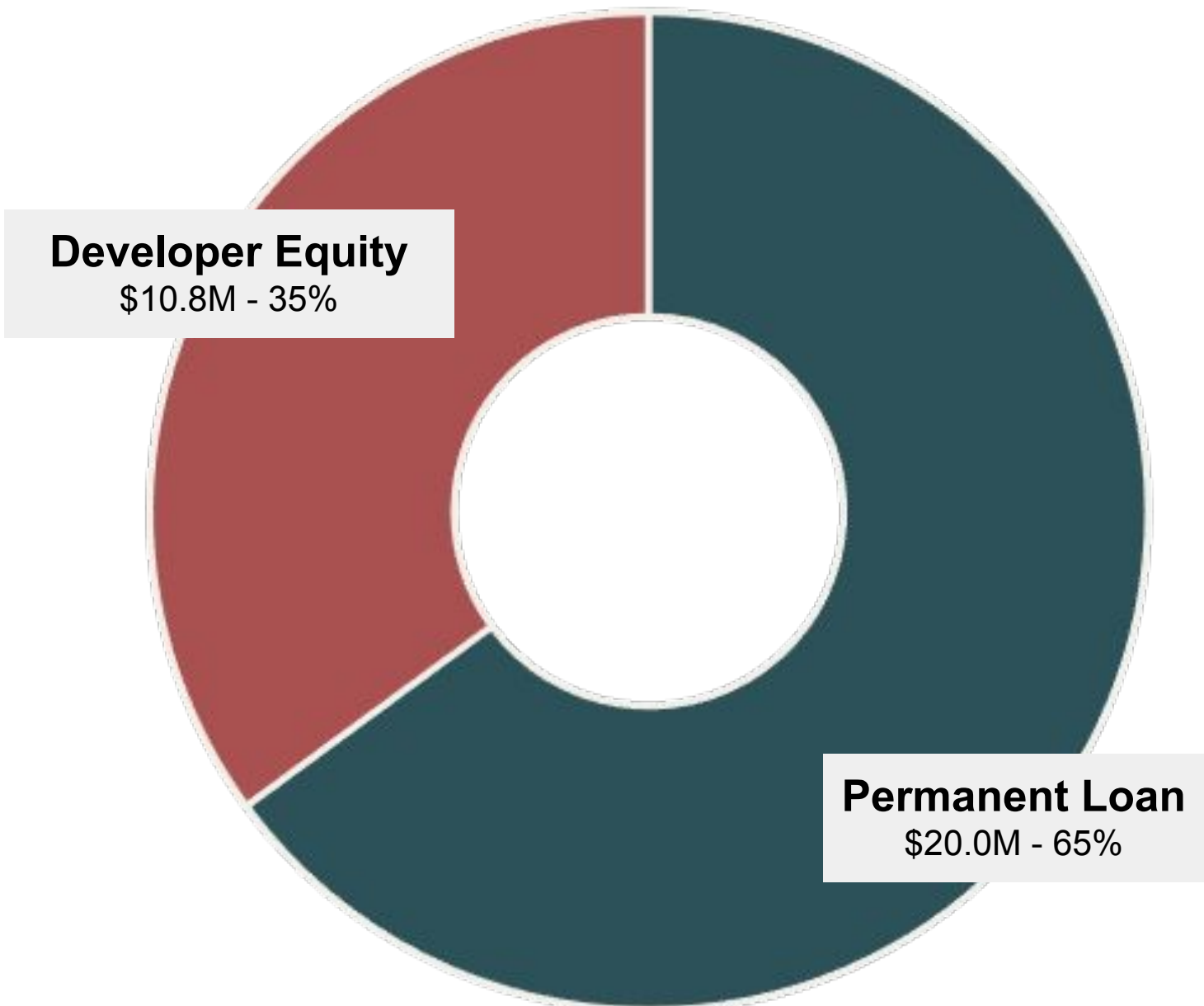
TYPICAL FUNDING SOURCES FOR HOUSING

For example: a 55-unit building with a total development cost of \$30.8M

Affordable



Market Rate



*City of Boston soft funds may include Community Preservation Act, IDP payment in lieu, and Neighborhood Housing Trust
 **State of Massachusetts soft funds may include Affordable Housing Trust Fund and Housing Stabilization Fund

TEST FIT OPTIONS ON THE SITE

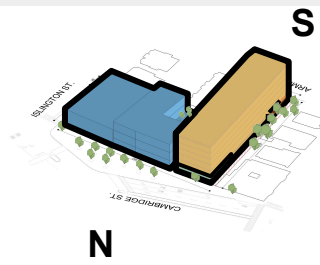
Option 1 BCYF on Cambridge No Pool

Option 2 BCYF on Cambridge 1 Pool

Option 3 BCYF on Armington 1 Pool

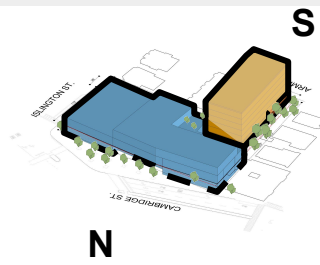
CAMBRIDGE
STREET SITE

B H(a)



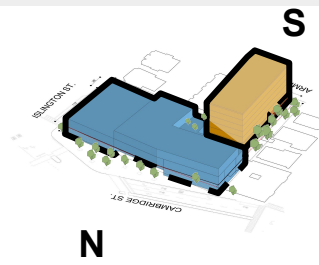
Opt. 2.1

B H(a)



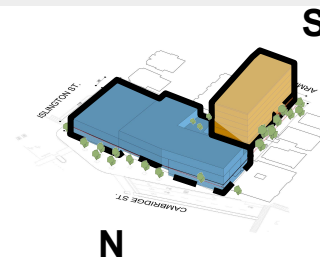
Opt. 2.2

B H(a)

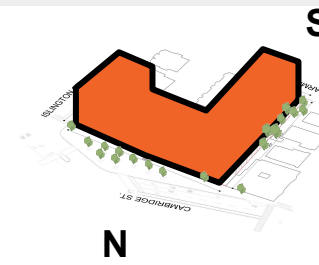


Opt. 2.3

B H(a)



H(m)

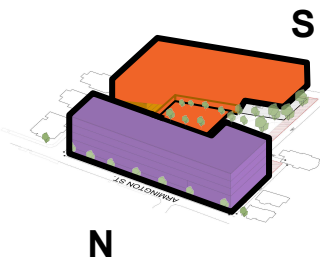


Key

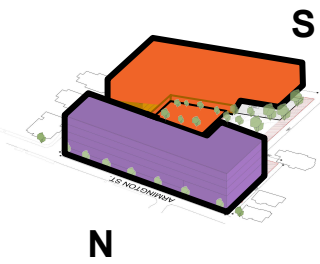
- B BCYF
- K6 PreK-6 BPS SCHOOL
- H(a) Housing - Affordable
- H(m) Housing - Market Rate

ARMINGTON
STREET SITE

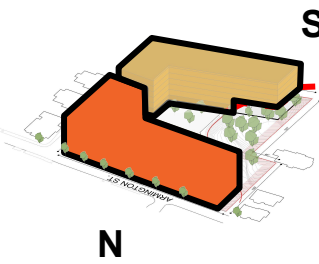
K6 H(m)



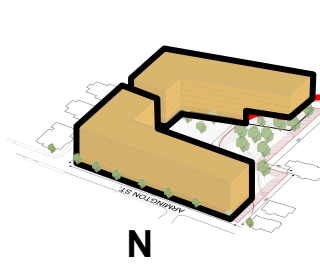
H(m)



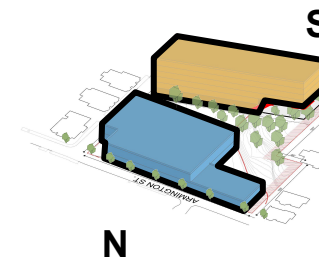
H(m) H(a)



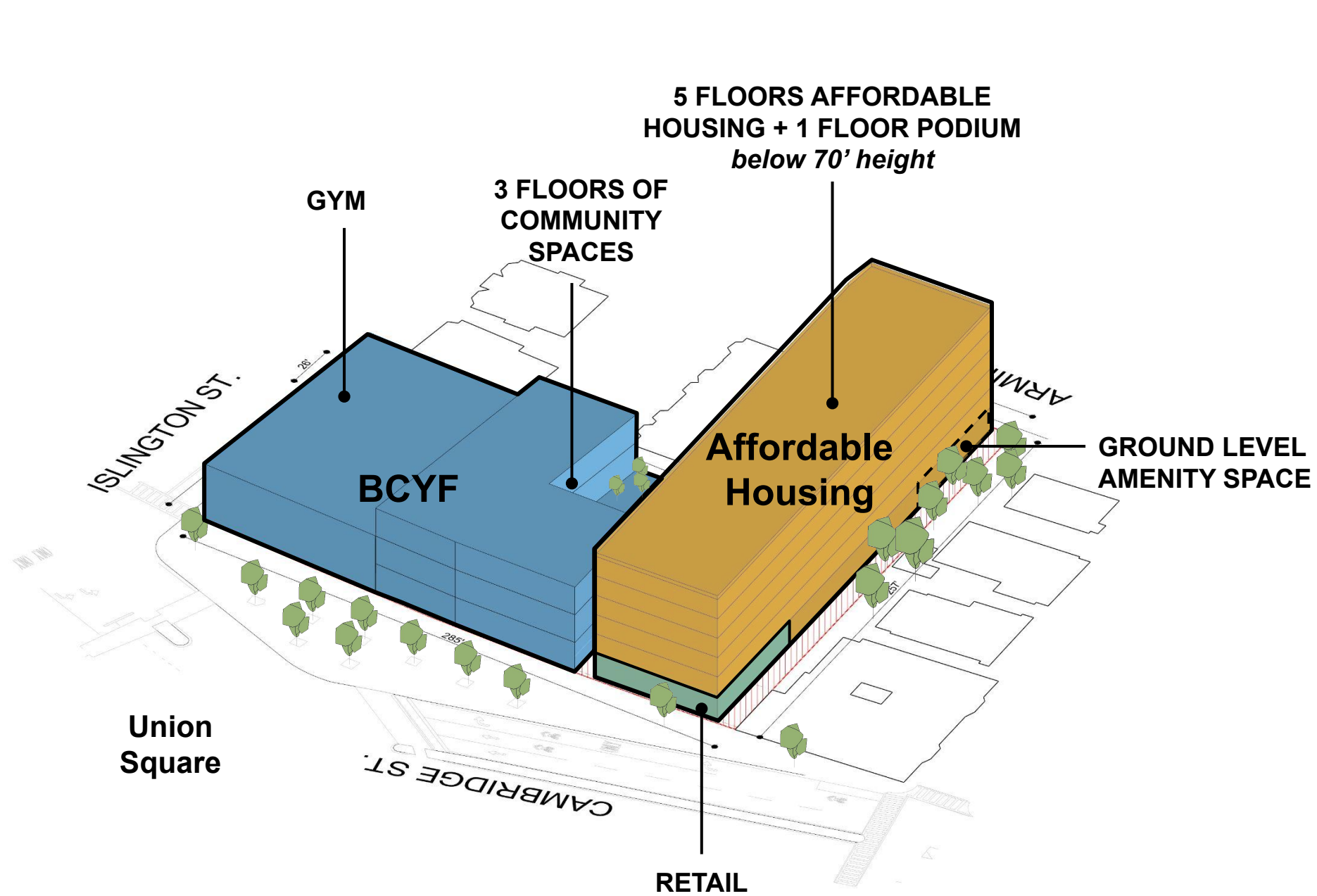
H(a) H(a)



B H(a)

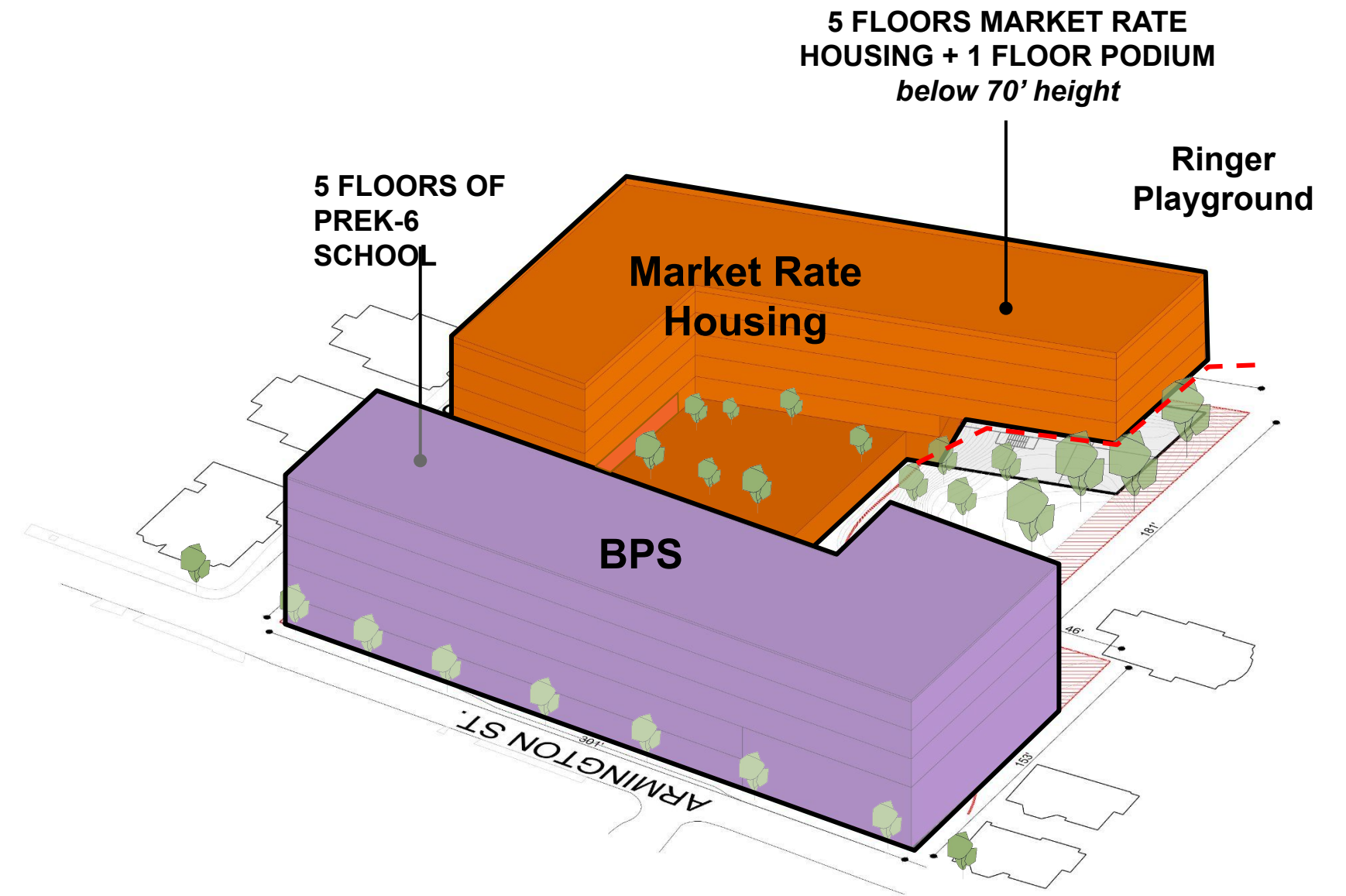


OPTION 1



Cambridge Street Uses

- BCYF Community Center - No Pool
- Affordable Housing - Approx. 90 Apartments
 - Retail - Approx. 4,000sf



Armington Street Uses

- PreK-6 Boston Public School
- Market-Rate Housing - Approx. 115 Apartments

OPTION 1 FINANCIAL ANALYSIS

Cambridge Street

Lot Size	1.12 Acres
Stories	6
Construction	Podium
Residential Area	92,300 SF
Residential Units	90
- Market Rate	-
- 70% AMI	63 (70%)
- 50% AMI	27 (30%)
- Voucher	-
Average Unit Size	812 SF
Retail Area	4,600 SF
Parking	-
BCYF	43,081 SF
School	-

Armington Street

Lot Size	1.85 Acres
Stories	6
Construction	Podium
Residential Area	106,600 SF
Residential Units	116
- Market Rate	93 (80%)
- 70% AMI	10 (8.5%)
- 50% AMI	10 (8.5%)
- Voucher	3 (3%)
Average Unit Size	770 SF
Retail Area	-
Parking*	36 spaces
BCYF	-
School	121,095 SF

*All podium spaces

Annual Net Income

Residential	\$4.4M
Retail	\$271k
Parking Fees	\$52k
Net Operating Income	\$4.7M

Cap Rate	4.5%
Valuation	\$105M

Development Cost

Residential, Retail, and Parking Cost	\$102M
Cambridge	\$51M
Armington	\$52M
BCYF	\$72M
School	\$157M

Return on Cost

6.3%

Potential Subsidy

\$4.0M

Affordable Housing Funding Gap

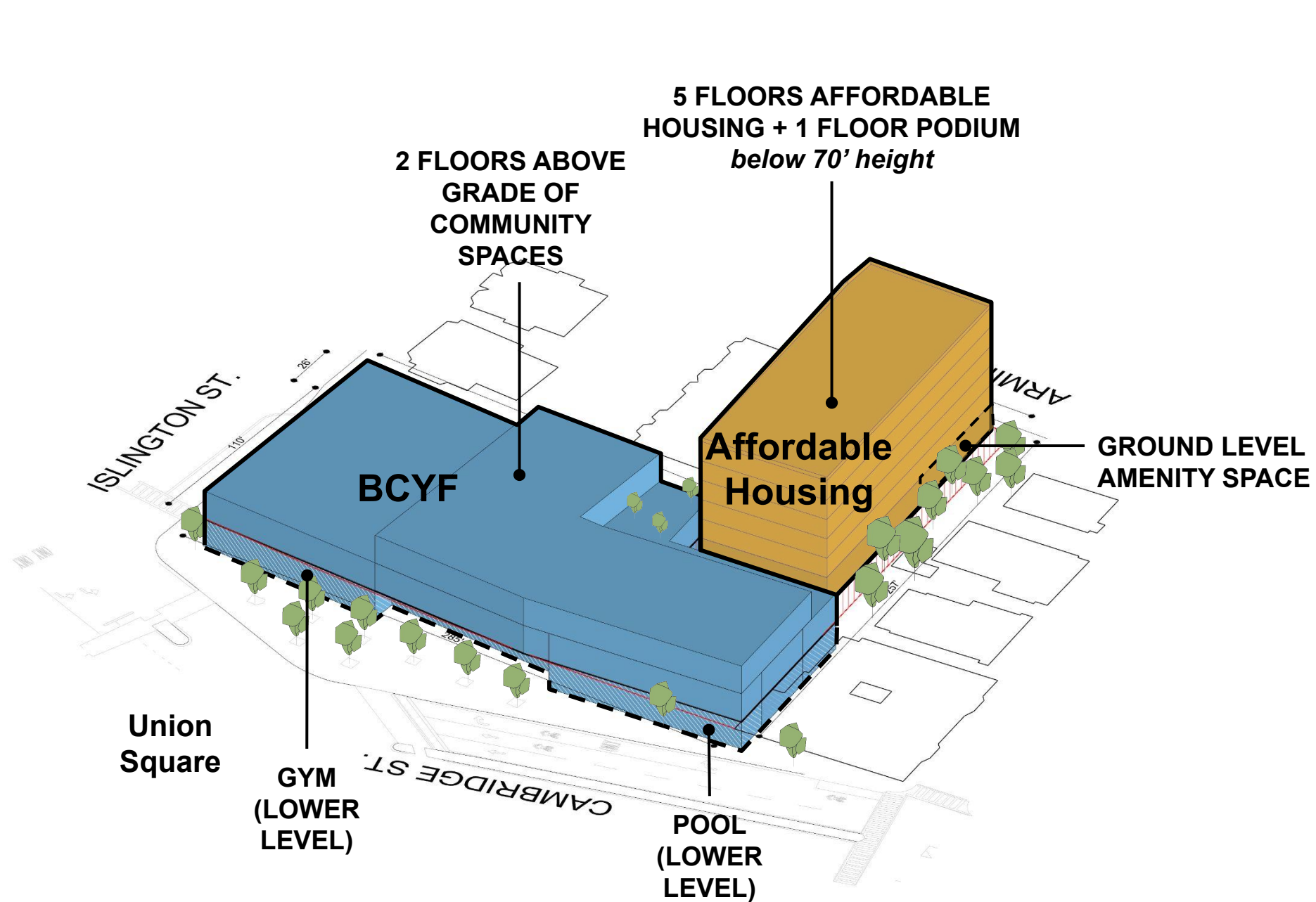
\$34M

Public Facility Cost

\$229M

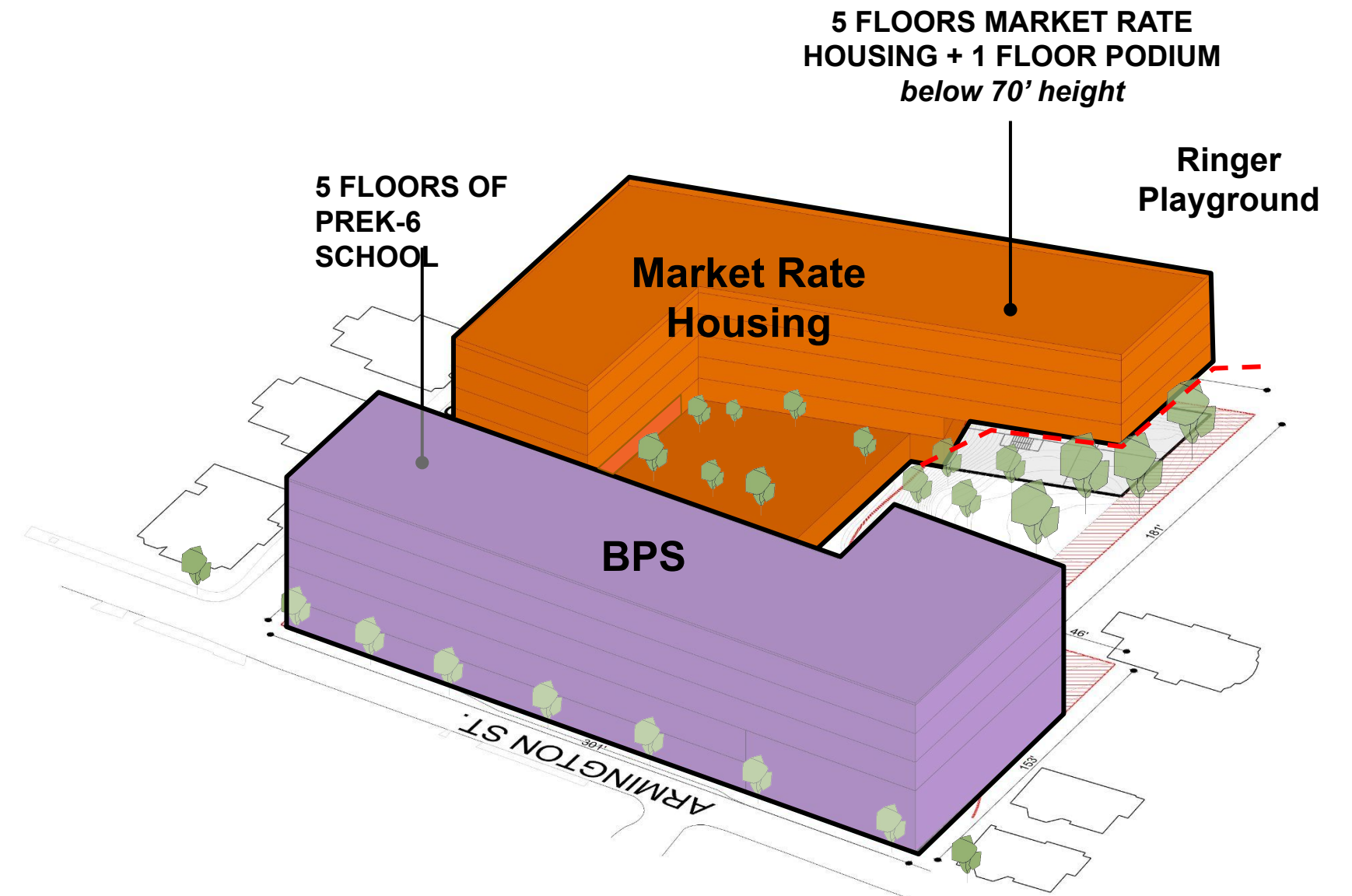


OPTION 2.1



Cambridge Street Uses

- BCYF Community Center - 1 Pool
- Affordable Housing - Approx. 55 Apartments



Armington Street Uses

- PreK-6 Boston Public School
- Market-Rate Housing - Approx. 115 Apartments

OPTION 2.1 FINANCIAL ANALYSIS

Cambridge Street

Lot Size	1.12 Acres
Stories	6
Construction	Podium
Residential Area	58,934 SF
Residential Units	55
- Market Rate	-
- 70% AMI	39 (70%)
- 50% AMI	17 (30%)
- Voucher	-
Average Unit Size	795 SF
Retail Area	-
Parking	-
BCYF	60,348 SF
School	-

Armington Street

Lot Size	1.85 Acres
Stories	6
Construction	Podium
Residential Area	106,600 SF
Residential Units	116
- Market Rate	93 (80%)
- 70% AMI	10 (8.5%)
- 50% AMI	10 (8.5%)
- Voucher	3 (3%)
Average Unit Size	770 SF
Retail Area	-
Parking*	36 spaces
BCYF	-
School	-

*All podium spaces

Annual Net Income

Residential	\$3.9M
Retail	-
Parking Fees	\$52k
Net Operating Income	\$3.9M

Cap Rate	4.5%
Valuation	\$87M

Development Cost

Residential, Retail, and Parking Cost	\$83M
Cambridge	\$31M
Armington	\$52M
BCYF	\$104M
School	\$157M

Return on Cost

6.2%

Potential Subsidy

\$2.5M

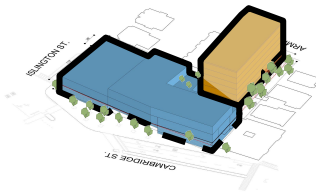
Affordable Housing Funding Gap

\$22M

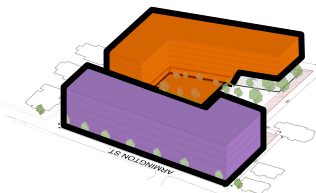
Public Facility Cost

\$261M

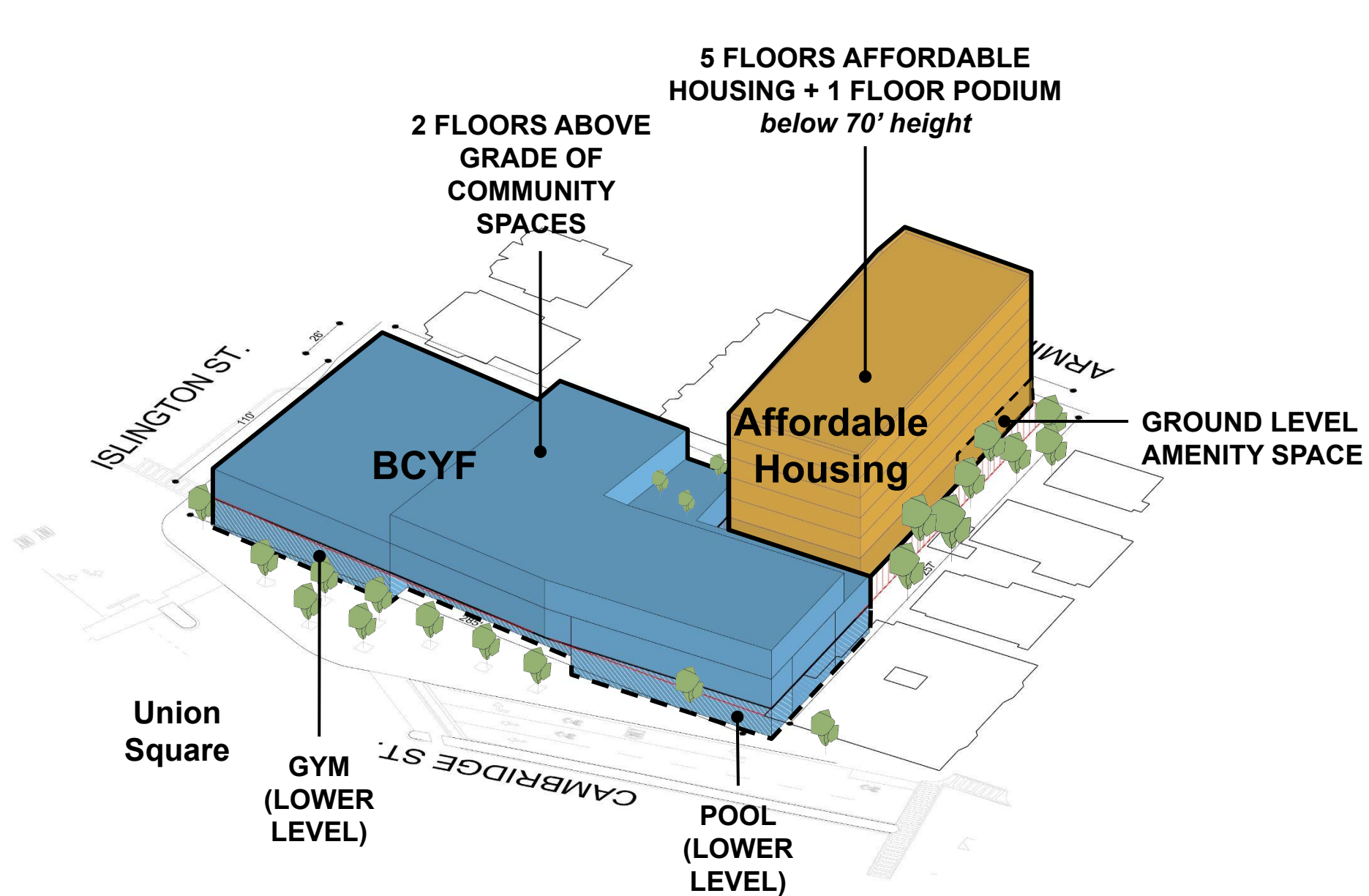
B H(a)



K6 H(m)

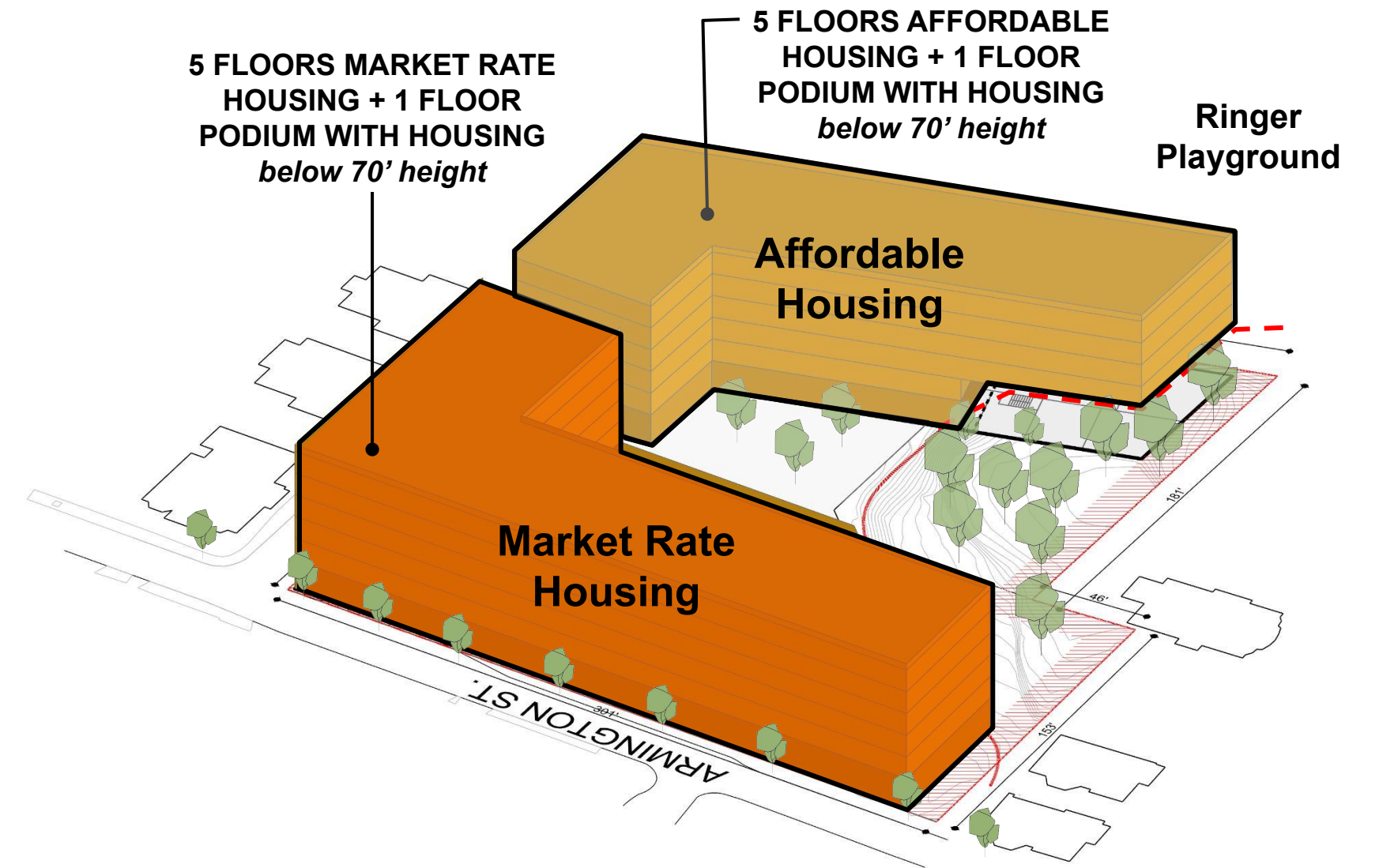


OPTION 2.2



Cambridge Street Uses

- BCYF Community Center - 1 Pool
- Affordable Housing - Approx. 55 Apartments



Armington Street Uses

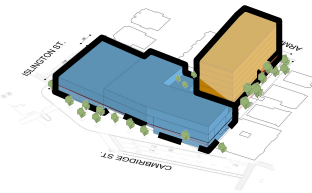
- Market-Rate Housing - Approx. 160 Apartments
- Affordable Housing - Approx. 100 Apartments

OPTION 2.2 FINANCIAL ANALYSIS

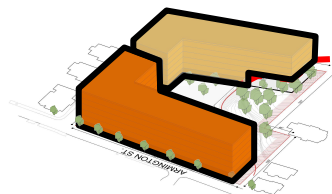
Cambridge Street

Same program as for option 2.1

B **H(a)**



H(m) **H(a)**



Armington Street North

Lot Size	1.03 Acres
Stories	6
Construction	Podium
Residential Area	131,980 SF
Residential Units	162
- Market Rate	130 (80%)
- 70% AMI	14 (8.5%)
- 50% AMI	14 (8.5%)
- Voucher	5 (3%)
Average Unit Size	664 SF
Retail Area	-
Parking*	46 spaces

*All podium spaces

Armington Street South

Lot Size	0.83 Acres
Stories	6
Construction	Podium
Residential Area	96,482 SF
Residential Units	101
- Market Rate	-
- 70% AMI	71 (70%)
- 50% AMI	30 (30%)
- Voucher	-
Average Unit Size	804 SF
Retail Area	-
Parking	-

Annual Net Income

Residential	\$6.3M
Retail	-
Parking Fees	\$66k
Net Operating Income	\$6.3M

Cap Rate	4.5%
Valuation	\$165M

Development Cost

Residential, Retail, and Parking Cost	\$145M
Cambridge	\$31M
Armington North	\$64M
Armington South	\$50M
BCYF	\$104M
School	-

Return on Cost

6.3%

Potential Subsidy

\$5.5M

Affordable Housing Funding Gap

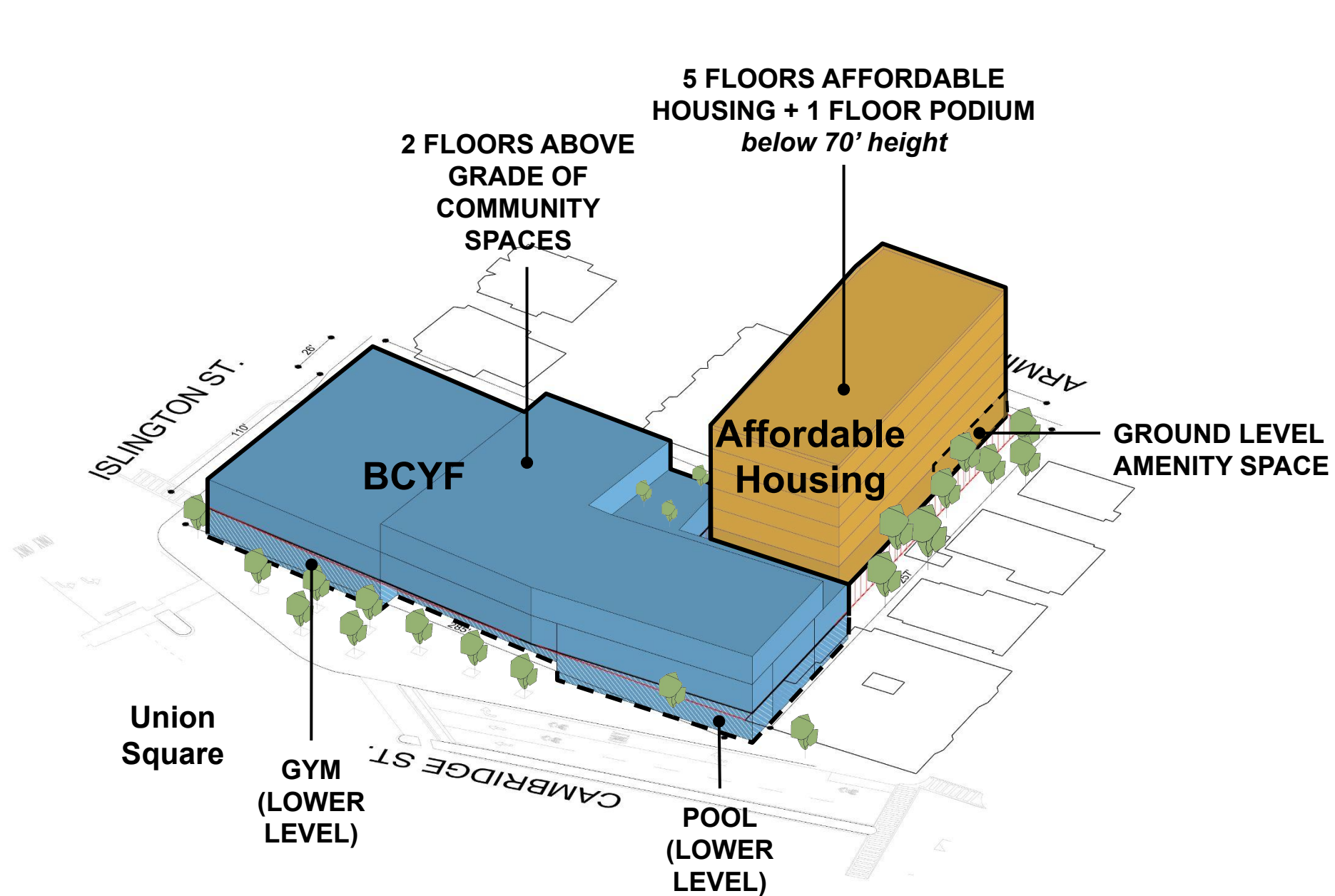
\$57M

Public Facility Cost

\$104M

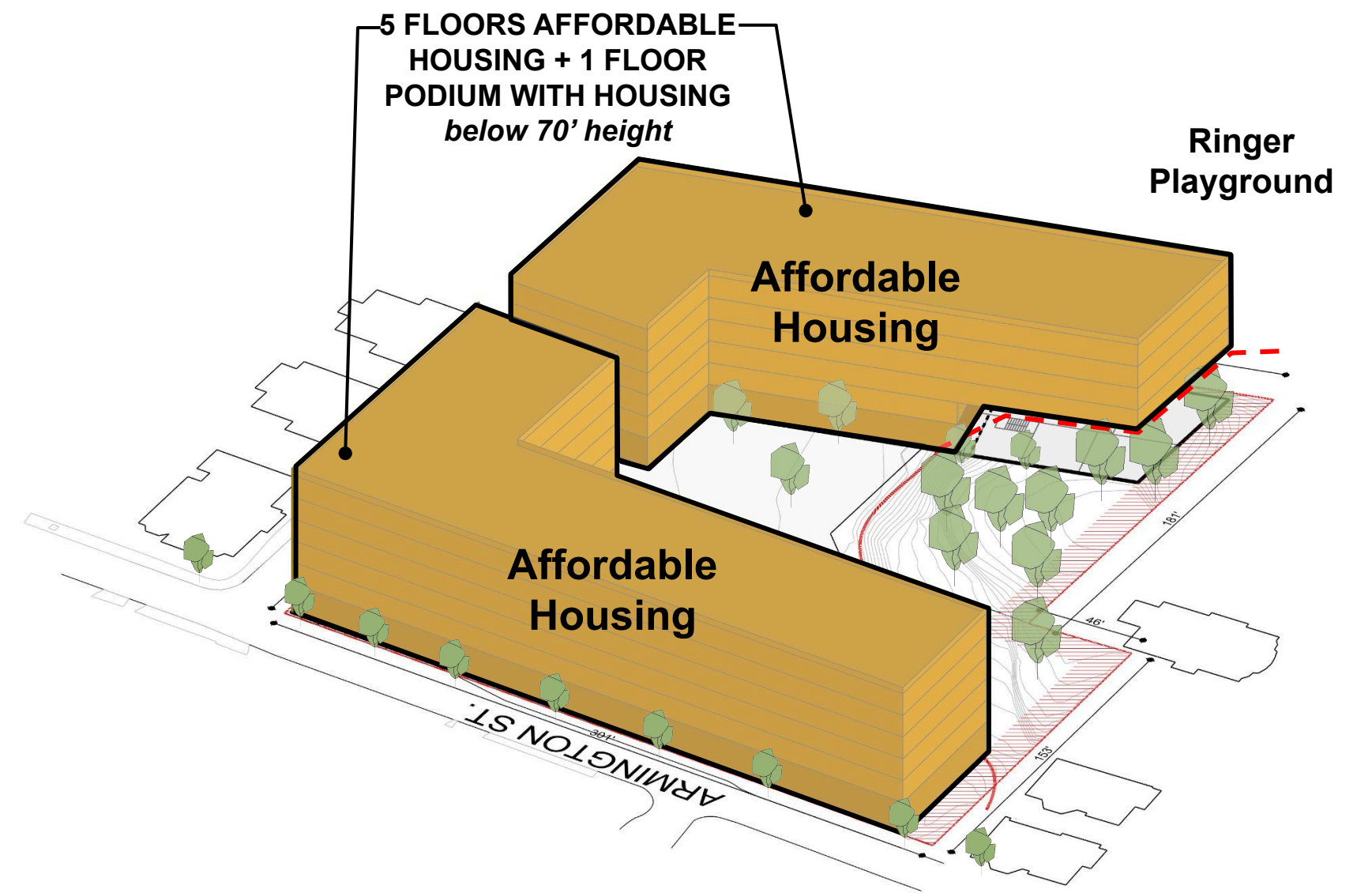


OPTION 2.3



Cambridge Street Uses

- BCYF Community Center - 1 Pool
- Affordable Housing - Approx. 55 Apartments



Armington Street Uses

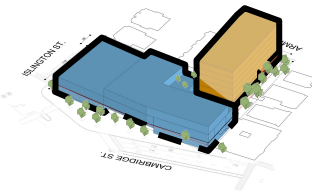
- Affordable Housing in Two Buildings
 - Facing Armington: Approx. 135 Apartments
 - Facing Webley: Approx. 100 Apartments

OPTION 2.3 FINANCIAL ANALYSIS

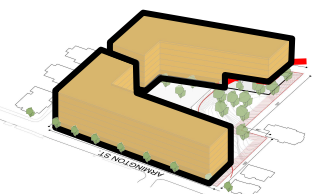
Cambridge Street

Same program as for option 2.1

B H(a)



H(a) H(a)



Armington Street North

Lot Size	1.03 Acres
Stories	6
Construction	Podium
Residential Area	136,218 SF
Residential Units	138
- Market Rate	-
- 70% AMI	97 (70%)
- 50% AMI	41 (30%)
- Voucher	-
Average Unit Size	830 SF
Retail Area	-
Parking	-

Armington Street South

Lot Size	0.83 Acres
Stories	6
Construction	Podium
Residential Area	96,482 SF
Residential Units	101
- Market Rate	-
- 70% AMI	71 (70%)
- 50% AMI	30 (30%)
- Voucher	-
Average Unit Size	804 SF
Retail Area	-
Parking	-

Annual Net Income

Residential	\$4.4M
Retail	-
Parking Fees	-
Net Operating Income	\$4.4M

Cap Rate	4.5%
Valuation	\$97M

Development Cost

Residential, Retail, and Parking Cost	\$152M
Cambridge	\$31M
Armington North	\$71M
Armington South	\$50M
BCYF	\$104M
School	-

Return on Cost

6.0%

Potential Subsidy

\$0

Affordable Housing Funding Gap

\$104M

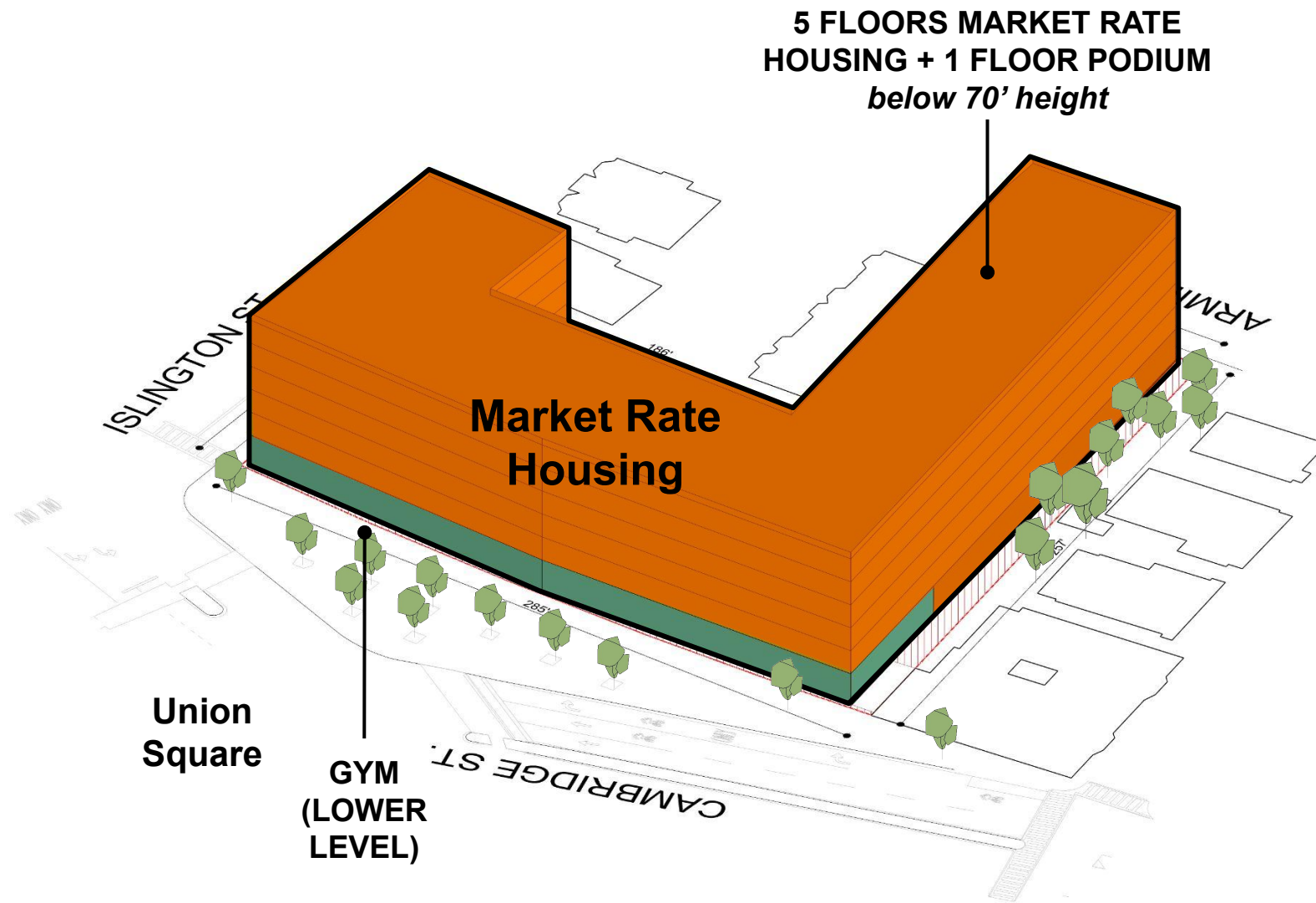
Public Facility Cost

\$104M



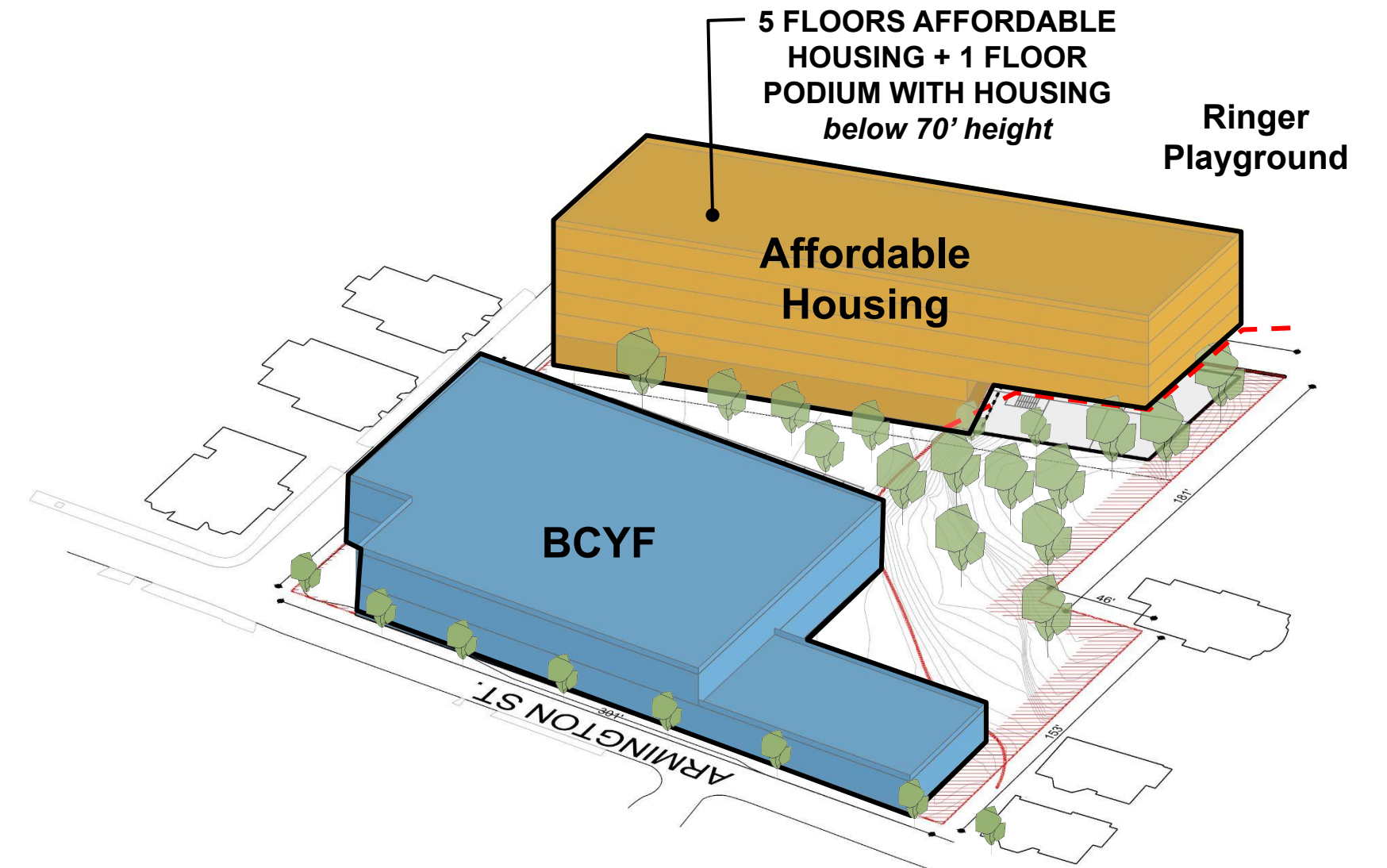
OPTION 3

Market Rate Housing



Cambridge Street Uses

- Market-Rate Housing - Approx. 200 Apartments
 - Retail - Approx. 20,000sf



Armington Street Uses

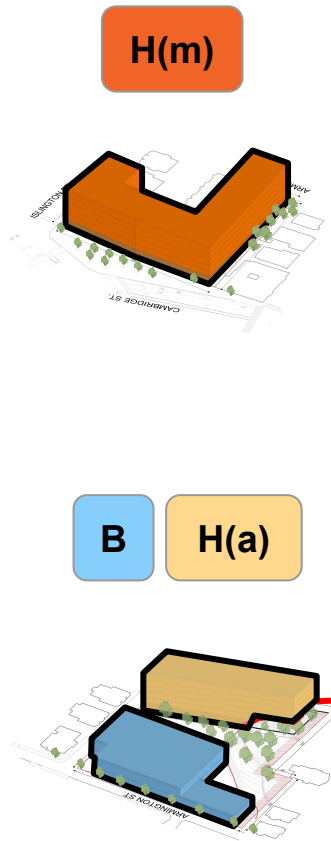
- BCYF Community Center - 1 Pool
- Affordable Housing - Approx. 90 Apartments

OPTION 3 FINANCIAL ANALYSIS

Cambridge Street

Lot Size	1.12 Acres
Stories	6
Construction	Podium
Residential Area	174,565 SF
Residential Units	200
- Market Rate	160 (80%)
- 70% AMI	17 (8.5%)
- 50% AMI	17 (8.5%)
- Voucher	6 (3%)
Average Unit Size	724 SF
Retail Area	23,100 SF
Parking*	131 spaces
BCYF	-
School	-

*20 podium spaces, 111 underground garage spaces



Armington Street

Lot Size	1.85 Acres
Stories	6
Construction	Podium
Residential Area	83,078 SF
Residential Units	90
- Market Rate	-
- 70% AMI	63 (70%)
- 50% AMI	27 (30%)
- Voucher	-
Average Unit Size	789 SF
Retail Area	-
Parking	-
BCYF	53,919 SF
School	-

Annual Net Income

Residential	\$6.4M
Retail	\$1.4M
Parking Fees	\$422k
Net Operating Income	\$8.2M

Cap Rate	4.5%
Valuation	\$183M

Development Cost

Residential, Retail, and Parking Cost	\$147M
Cambridge	\$104M
Armington	\$43M
BCYF	\$84M
School	-

Return on Cost

6.5%

Potential Subsidy

\$14M

Affordable Housing Funding Gap

\$29M

Public Facility Cost

\$84M

SUMMARY OF THE OPTIONS

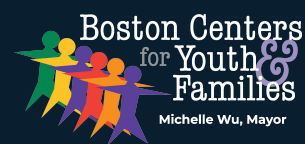
	Option 1 BCYF on Cambridge No Pool	Option 2 BCYF on Cambridge 1 Pool			Option 3 BCYF on Armington 1 Pool	Key
		Opt. 2.1	Opt. 2.2	Opt. 2.3		
CAMBRIDGE STREET SITE						
ARMINGTON STREET SITE						
POTENTIAL SUBSIDY	\$4.0M	\$2.5M	\$5.5M	\$0	\$14M	
AFFORDABLE HOUSING FUNDING GAP	\$34M	\$22M	\$57M	\$104M	\$29M	



SITE PLANNING NEXT STEPS AND TIMELINE



Mayor Michelle Wu



utile



City of Boston
Public Facilities

NEXT STEPS AND TIMELINE

Step 1: By the end of 2026, determine through a community process what uses will go on the site (the pathway) - BCYF, BPS, and/or Housing.

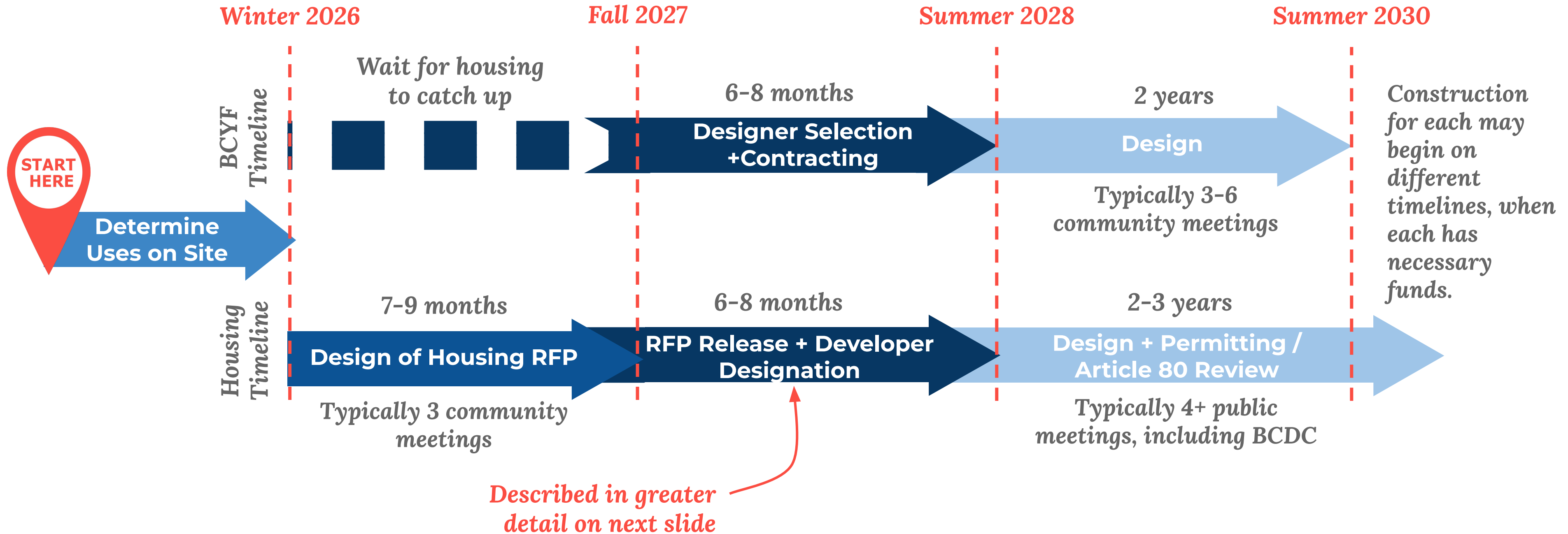
Pathway 1: BCYF + Housing

Pathway 2: BCYF + BPS (No Housing)

Pathway 3: All Three - BCYF + BPS + Housing

PATHWAY 1 - BCYF + HOUSING POTENTIAL PROCESS

Tentative Timeline. Dates subject to change due to unforeseen conditions.



*BCYF Construction estimated 24-30 months



PATHWAY 1: HOUSING RFP TIMELINE

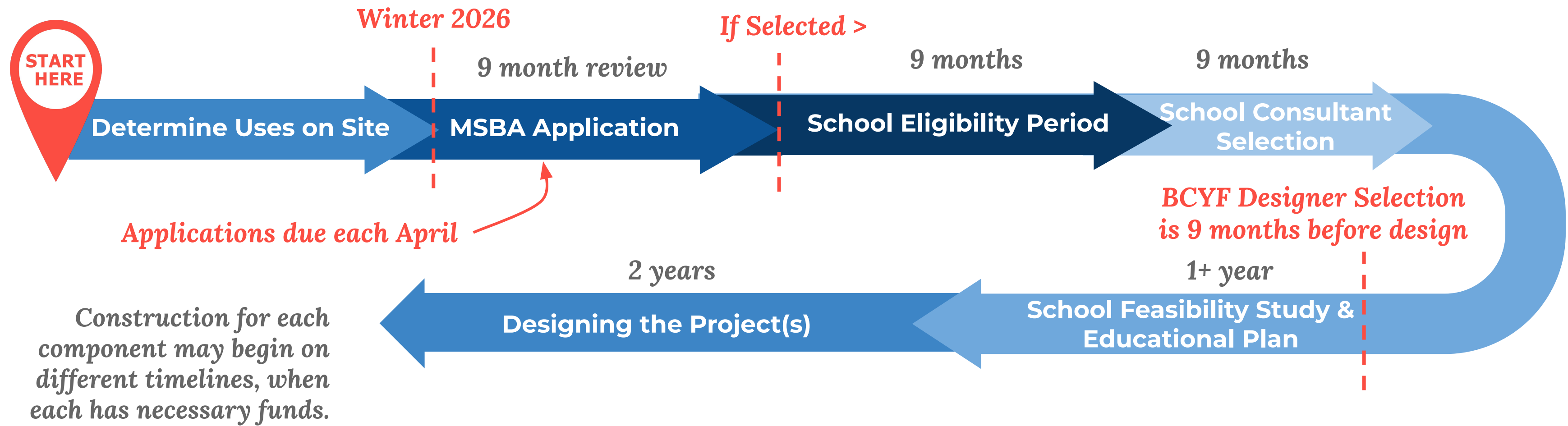
There are multiple factors affecting the timeline for a potential housing RFP, which we will understand better once we go through the public process for the RFP design, to understand what the community wants:

- Size of the site could allow for multiple developers, each of whose proposals would need to be planned in the RFP design process, have responses collected, be presented to the community, and then each have a developer selected and designated. This will affect number of community meetings and length of review.
- Mixing market-rate and affordable housing would add complexity and likely introduce the need for multiple developers and for different surplus processes.
- Depending on the design of the RFP, different pieces of the parcels may need to be subdivided, followed by votes to surplus by City Council.

PATHWAYS 2+3 - POTENTIAL SCHOOL PROCESS

Pathway 2: BCYF+BPS; Pathway 3: BCYF +BPS+Housing

(If pursuing state partnership for school)



DESIGNING DIFFERENT USES TOGETHER

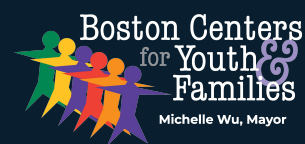
Each timeline previously shown **assumes that the design of the BCYF would happen simultaneously to the design of the other uses on the site**, even if the construction is on different timelines. Designing the different pieces in tandem allows the various projects to understand the following about each other and design them together:

- Shared resources (ex. Parking, groundwater infiltration areas, etc.)
- Utilities on a shared site
- Shared back-of-house spaces (loading, trash pick-up, transformers/mechanical)
- Programmatic sharing + overlap (i.e. if there is a school and a BCYF, could they share a gym and/or pool? If there is housing and a BCYF, could the housing have ground floor programming spaces like classrooms instead of retail to help serve the community center?)
- Common interests related to circulation, open space, transportation demand, etc

QUESTIONS AND COMMENTS



Mayor Michelle Wu



utile



City of Boston
Public Facilities

Thank You

