

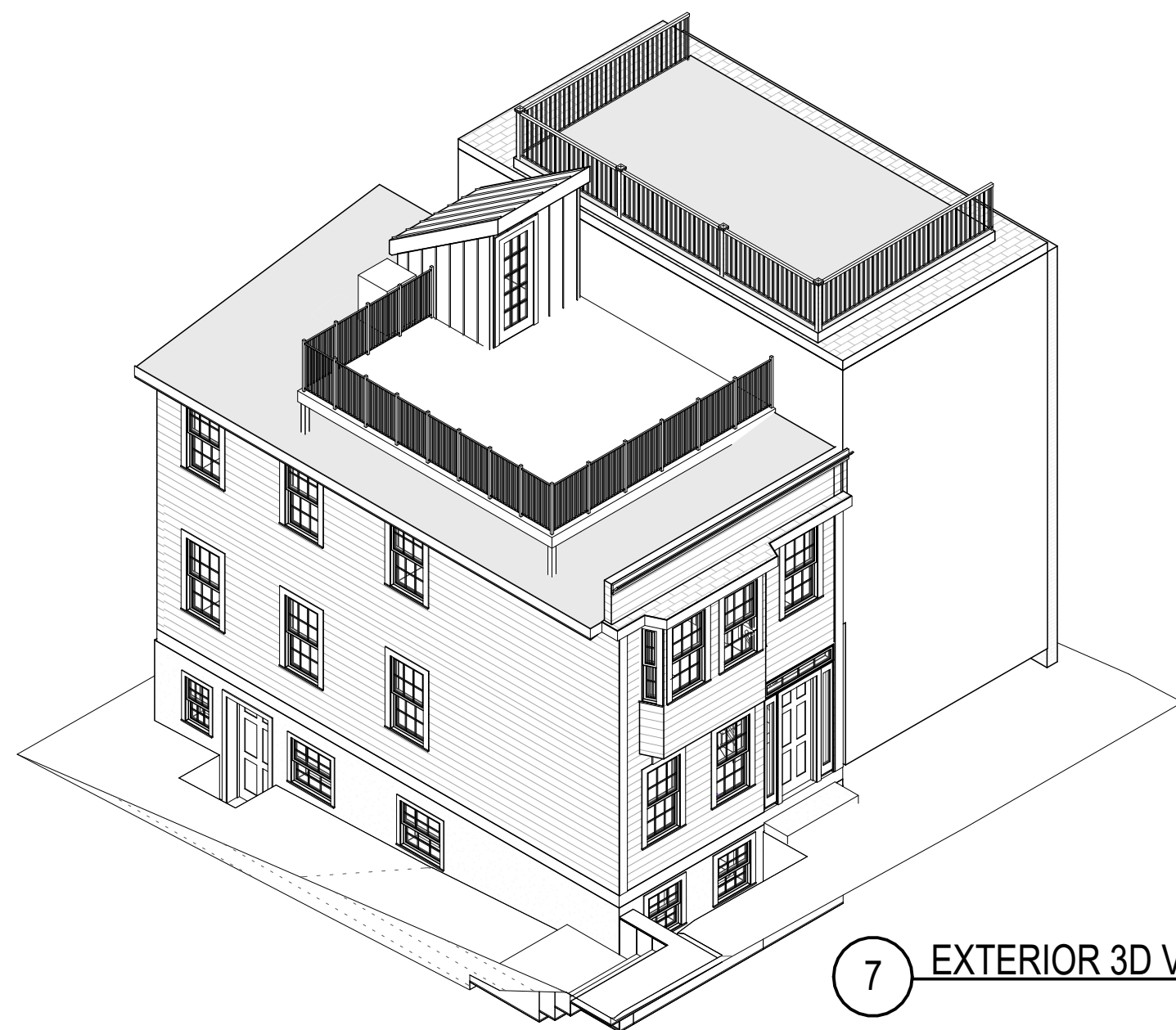
DATE	REV.	DESCRIPTION
06/13/2026		Drawn By: ARW

PROJECT STATUS

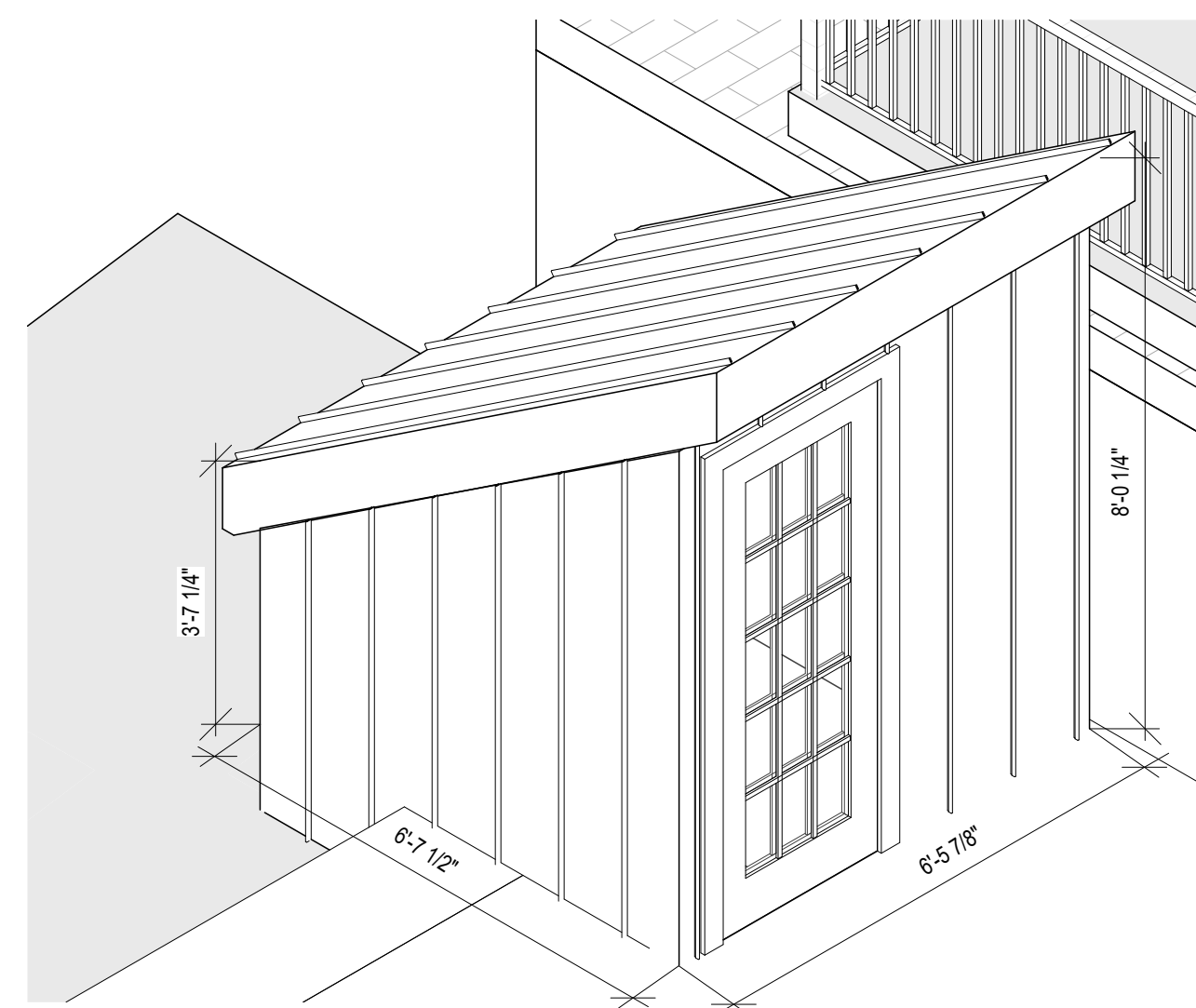
DEMO PLAN AND PROPOSED CONDITIONS

7 Smith Court
Boston, Massachusetts

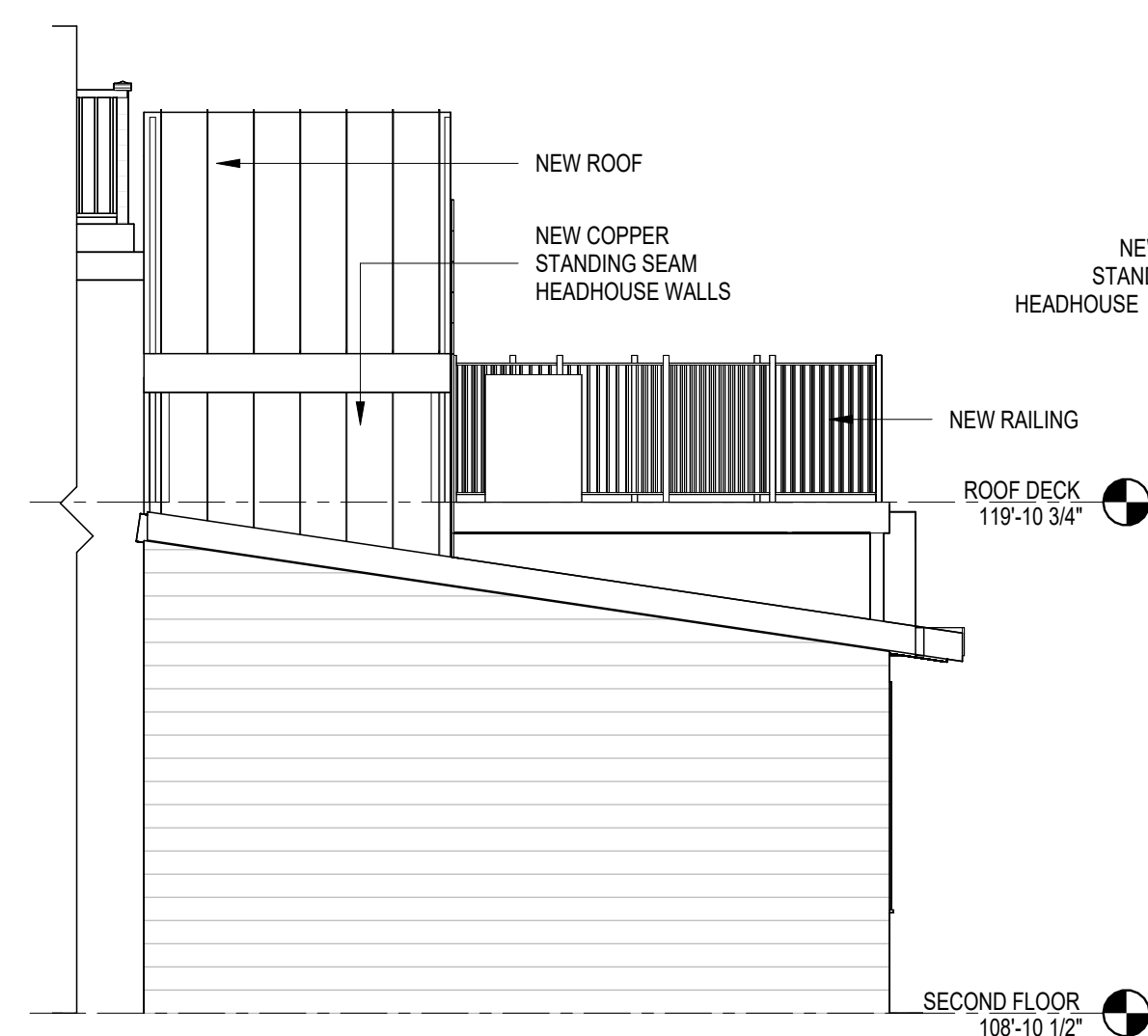
A1.1



7 EXTERIOR 3D VIEW



6 HEADHOUSE 3D VIEW



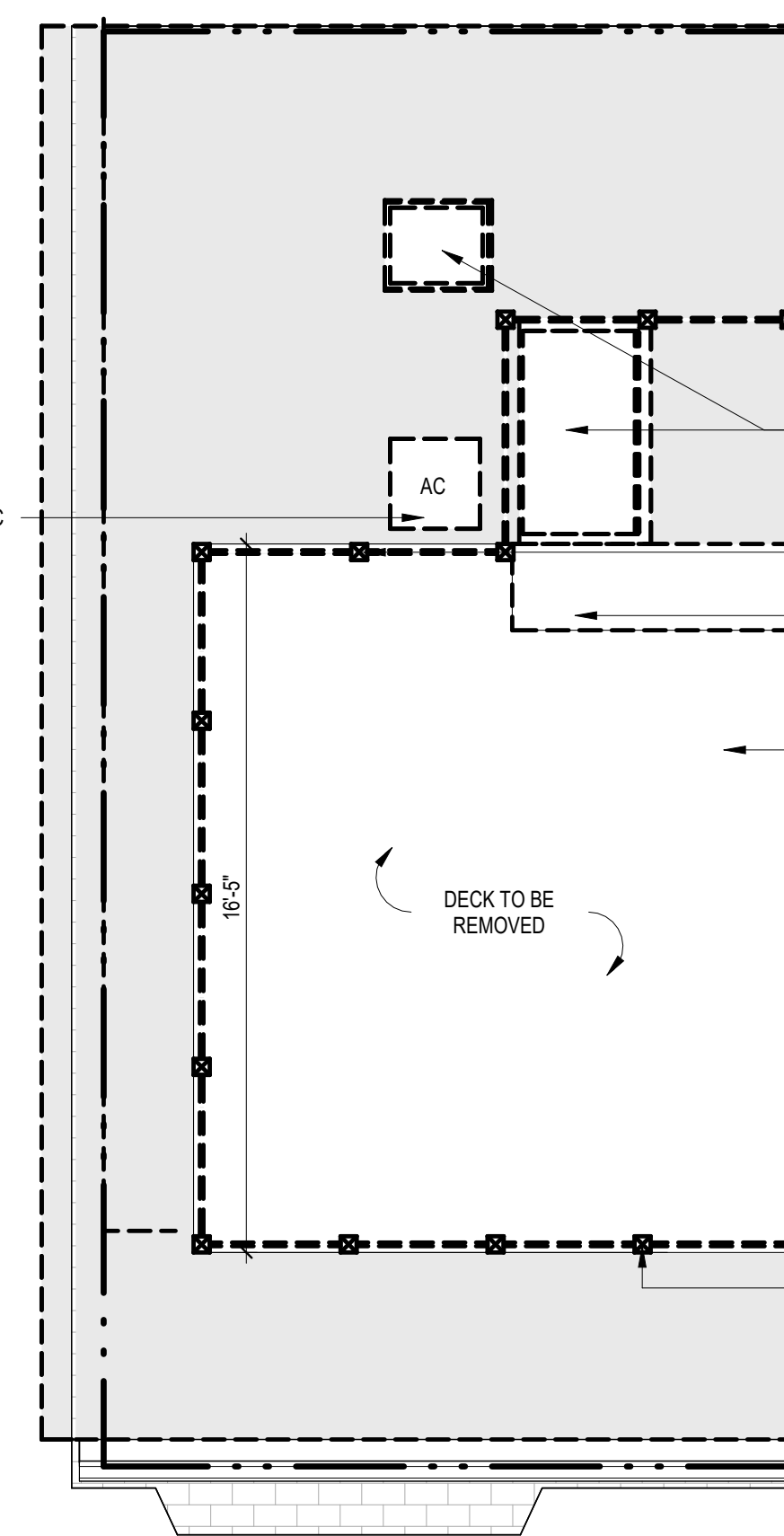
5 NORTH PROPOSED ELEVATION
1/4" = 1'-0"



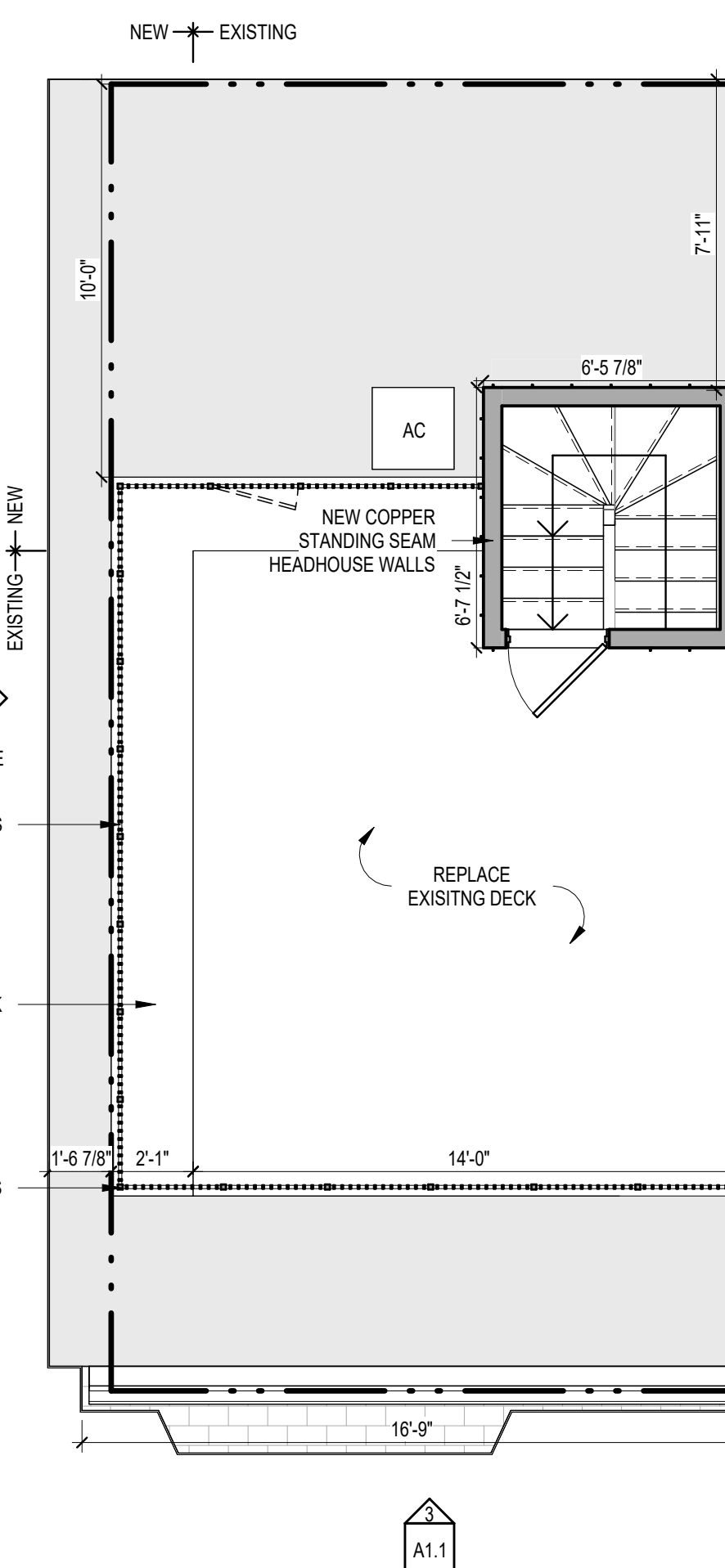
4 WEST PROPOSED ELEVATION
1/4" = 1'-0"



3 SOUTH PROPOSED ELEVATION
1/4" = 1'-0"



2 ROOF DECK DEMO PLAN
1/4" = 1'-0"



1 ROOF DECK PROPOSED PLAN
1/4" = 1'-0"

CONDITIONS LEGEND

- NEW CONSTRUCTION
- EXISTING TO REMAIN
- DEMOLISHED