



Improvements to
**QUINCY STREET
PLAY AREA**

COMMUNITY MEETING #3
DRAFT



ZOOM INTERPRETATION SERVICES

English: For interpretation in [_____],

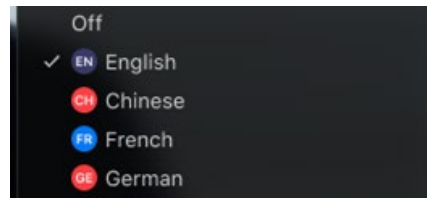
1. Go to the horizontal control bar at the bottom of your screen. Click on “Interpretation.”
2. Then click on the language that you would like to hear.
3. You are now accessing this meeting in [_____]

Spanish: Para traducción en Español,

1. Vaya a la parte baja de la pantalla, en la barra horizontal, y presione la tecla “Interpretation”.
2. Luego seleccione el idioma que desea escuchar.
3. Después de seleccionar, usted entrará a la reunión en el idioma “Español”.

Haitian Creole: Pou entèpretasyon Kreyòl ayisyen,

1. Ale nan kontwòl ba nan pati anba ekran an epi Klike sou "Interpretation"
2. Apre sa, klike sou lang ke ou ta renmen tande a.
3. Kounye a ou gen aksè a reyinyon an Kreyòl ayisyen



MEETING RECORDING



The Boston Parks and Recreation Department will be recording the meeting and posting to our project webpage for those who are unable to attend the Zoom meeting live.

It is possible that participants may also be recording the meeting with their phones cameras or other devices. If you do not wish to be recorded during this meeting, please keep your microphone muted and camera off.

*Please share with your neighbors and friends,
boston.gov/quincy-street-play*

VIRTUAL MEETING ETIQUETTE

We want to ensure this conversation is a pleasant experience for all and that all community members/stakeholders are comfortable sharing their comments, questions and feedback.

Please be respectful and mindful of each other's time when asking questions/ providing comments, so that all attendees are able to participate in the meeting.

Keep questions/ comments project-specific and not personal to yield solution-driven discussion.

Please wait until all attendees have had the opportunity to ask a question/ provide a comment before providing additional questions/ comments.

*You can always set up a conversation with **Max Sell**, max.sell@Boston.gov , to further discuss the project or process.*

ZOOM TIPS

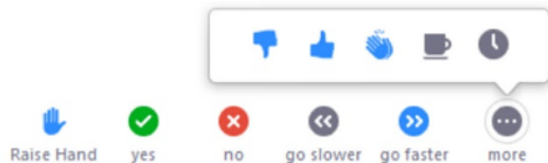
Here is how you can participate during the question and answer part of the presentation.

DURING THE PRESENTATION:



VIA WEB:

Turn video on / off.



To use these non-verbal options click on participants (bottom of screen); these options will pop up in side bar.

DURING THE Q&A:



JOINING VIA PHONE?

Use *9 to raise hand to ask for audio / video permission to ask questions or provide comments.



VIA WEB:

Chat to ask questions / comments or provide responses to poll questions



Raise hand to ask for audio / video permission to ask questions or provide comments.

AGENDA

1

PROJECT TEAM INTRODUCTION

2

PROJECT OVERVIEW

3

FEEDBACK FROM COMMUNITY MEETINGS

4

DESIGN CONCEPTS AND COMPARISON

5

BASKETBALL COURT IMPROVEMENTS

PROJECT TEAM

MAX SELL

PROJECT MANAGER

max.sell@boston.gov or 617-961-3097

My'Kel McMillen

Outreach Coordinator

Corey.mcmillen@boston.gov or 617-201-1294

Asha Janay

Roxbury Neighborhood Services Liaison

Asha.Janay@boston.gov or 617-635-3296

David Warner

Principal, Warner Larson now IMEG

Sameer Bhoite

Design Director, Warner Larson now IMEG

Michelle Johnson

Landscape Designer, Warner Larson now IMEG



PROJECT OVERVIEW

PROJECT SCHEDULE & FUNDING

Early Fall 2025

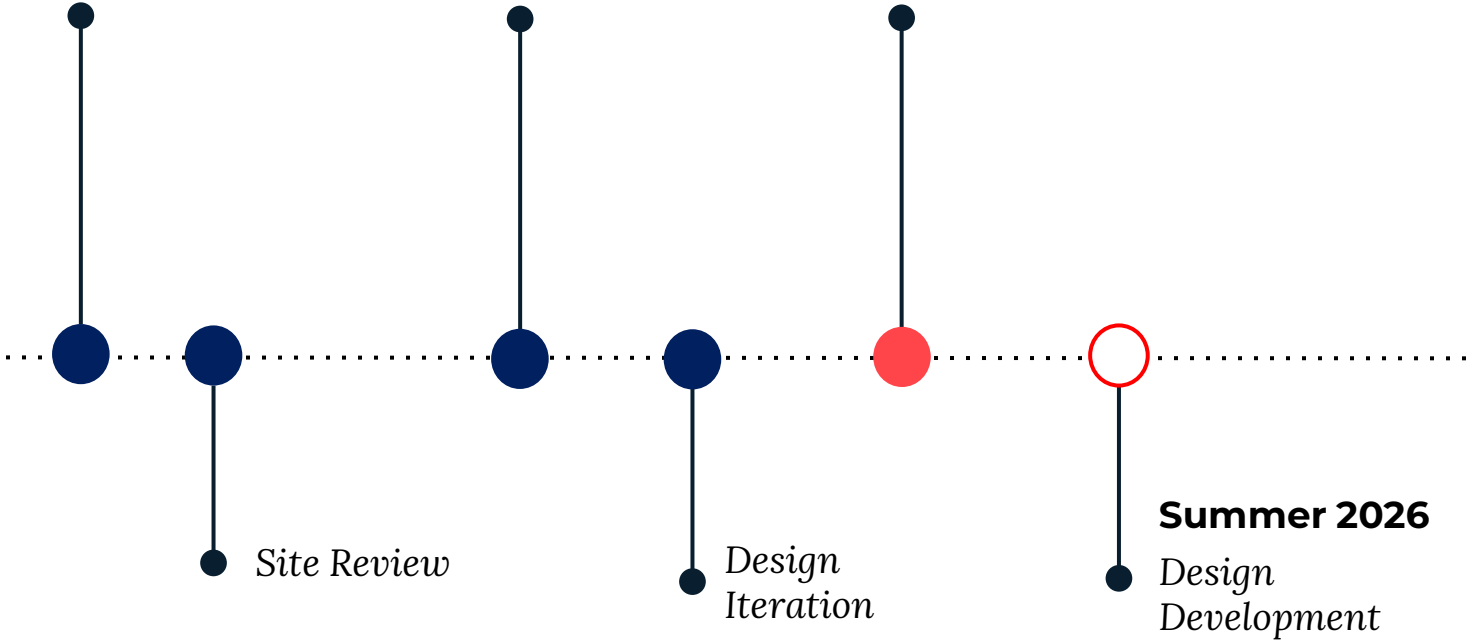
*Community Meeting 1
Site Analysis*

February 24th, 2026

*Community Meeting 2
Design Alternatives*

June 3rd, 2025

*Community Meeting 3
Schematic Design*





City of Boston
Priorities

Safety Guidelines+
Regulatory
Guidelines

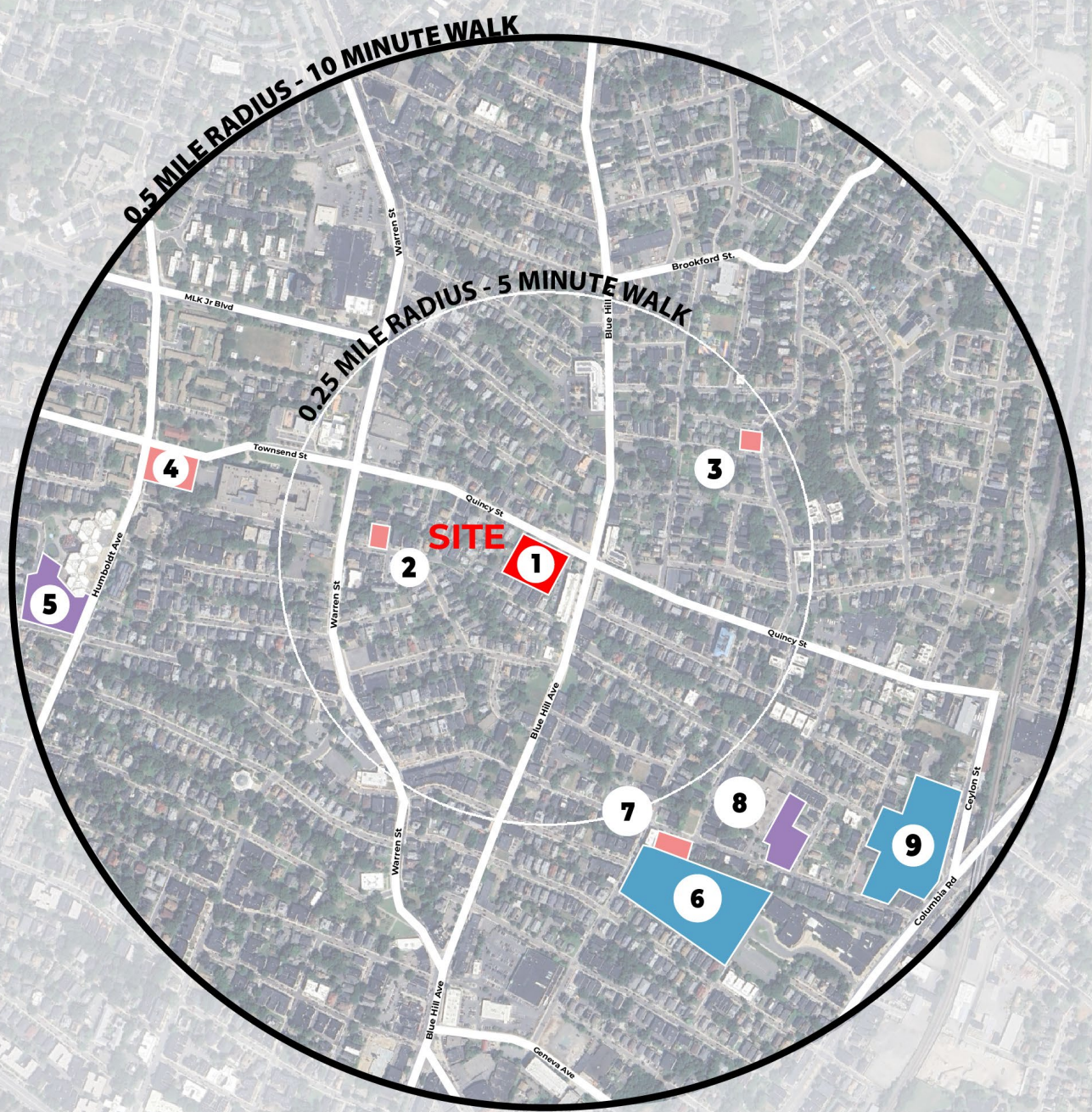
**PARK
DESIGN**







Parks + Recreation
Goals

Community
Input

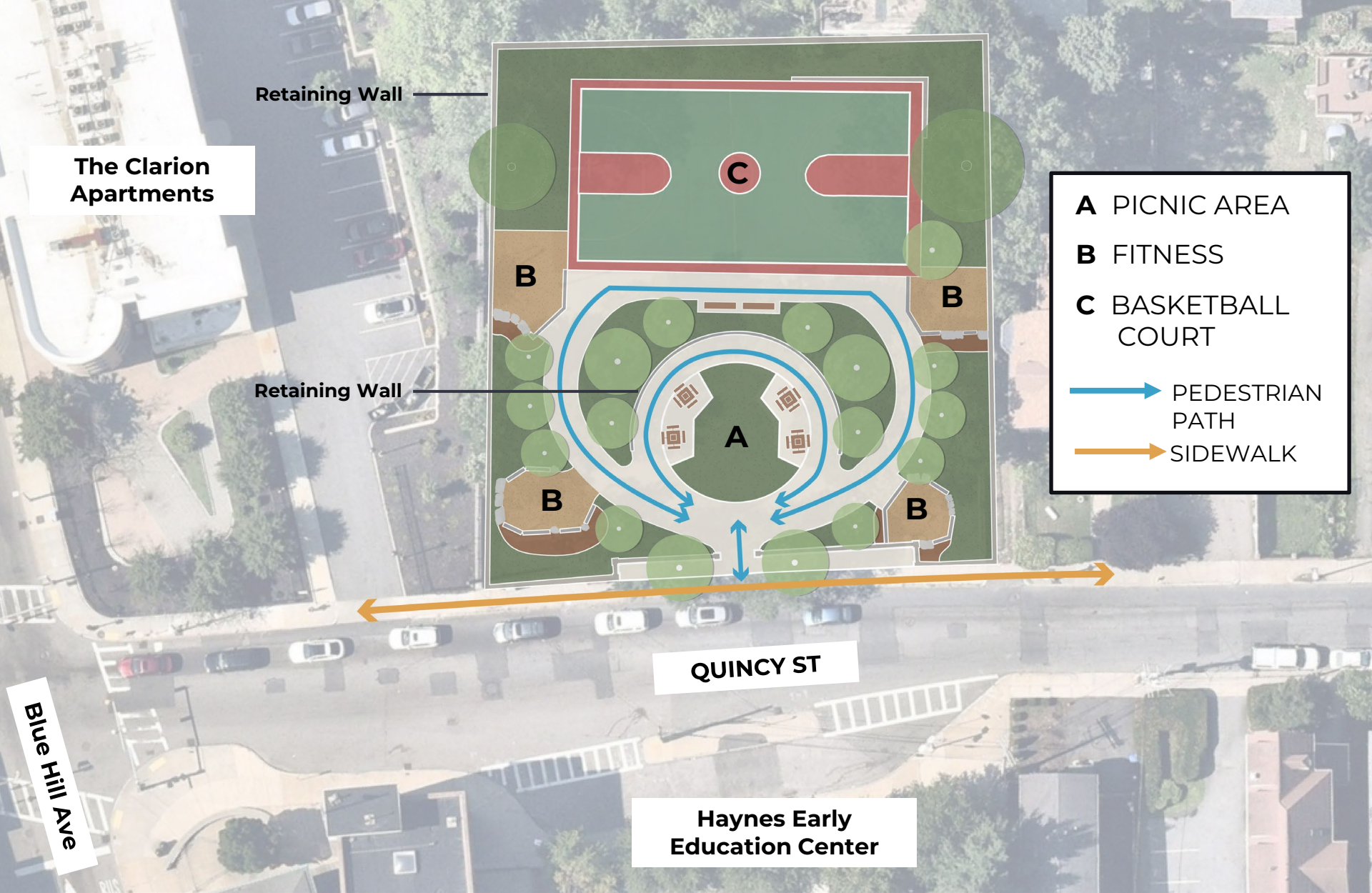
- PARK W/ PLAYGROUND
- PARK W/ COURT OR FIELD
- PARK W/ PLAY GROUND + BALL COURT

-
- 1 Quincy Street Play Area
 - 2 Holborn Street Tot Lot
 - 3 Willis Beauford Jr Tot Lot
 - 4 Laviscount Park
 - 5 Trotter School Playground
 - 6 Brunswick-King Play Area
 - 7 Children's Play Area
 - 8 King School Park
 - 9 Ceylon Park



Park Name				Ages 2 – 5 	Ages 5 – 12 	
1 Quincy St Play Area	✕	✕	✕			
2 Holborn Street Tot Lot				✕		
3 Willis Beauford Jr Tot Lot				✕		
4 Laviscount Park	✕			✕	✕	
5 Trotter School Playground	✕	✕		✕	✕	
6 Brunswick-King Play Area	✕					✕
7 Children's Play Area		✕		✕		
8 King School Park		✕		✕	✕	
9 Ceylon Park		✕				✕

Existing Park Amenities



Retaining Wall

The Clarion Apartments

Retaining Wall

A PICNIC AREA

B FITNESS

C BASKETBALL COURT

→ PEDESTRIAN PATH

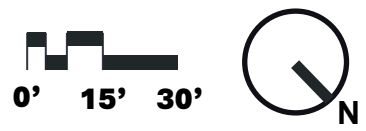
→ SIDEWALK

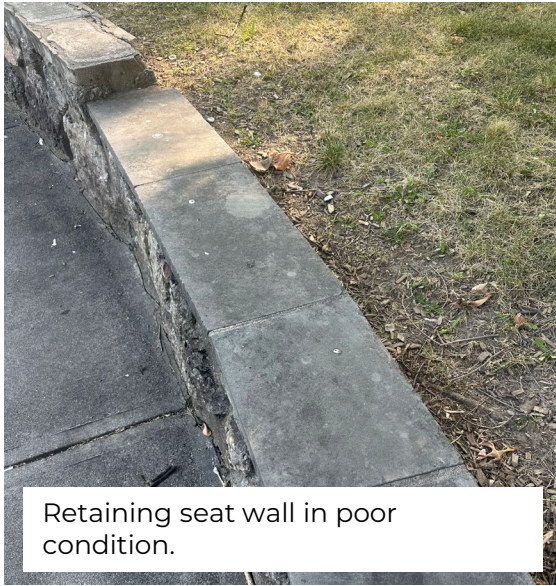
QUINCY ST

Blue Hill Ave

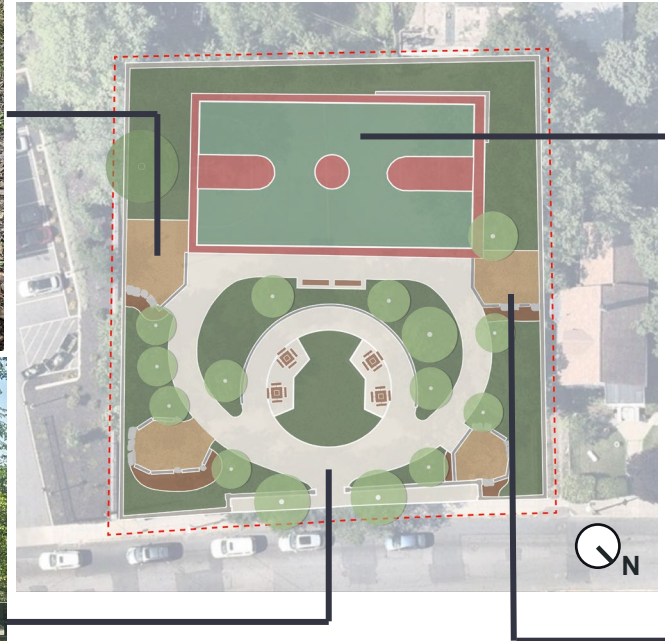
Haynes Early Education Center

Existing Conditions - Program Elements

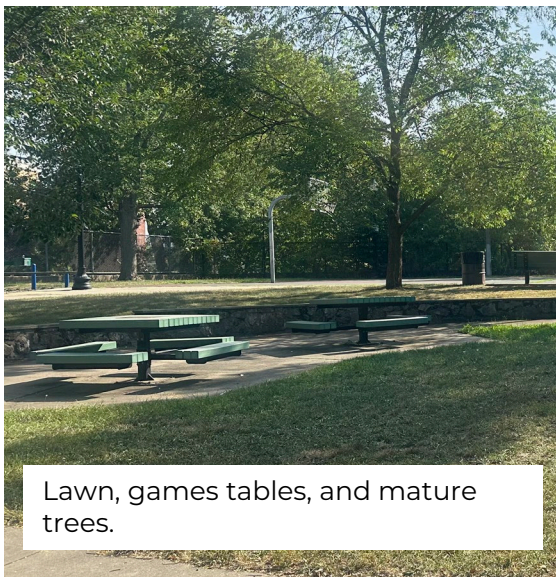




Retaining seat wall in poor condition.



Basketball court is in disrepair.



Lawn, games tables, and mature trees.



Fitness areas along retaining walls are showing its age.

Existing Conditions Analysis - Recap

FEEDBACK FROM COMMUNITY MEETING #1 AND #2

- Basketball court is used and fitness is **used by both teenagers/adults**.
- Park should be well lit for **security and safety**.
- Passive hangouts could invite **loitering**.
- Park **lacks an identity** but understand that this cannot be a park for everyone. For example, a tot-lot or passive use may conflict when basketball court is in use.
- There could be more programming on the basketball court by **making it welcoming** for all ages including girls.
- Court could be a **multi-court** by having volleyball or double-dutch games.



Recap from Community Meeting #1

CONCEPT A



CONCEPT B



CONCEPT C

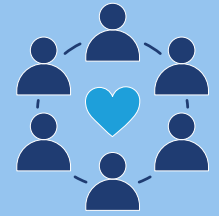


- 3 concepts presented at Community Meeting #2
- Preference expressed for Concept C by the one community member

Recap from Community Meeting #2

PROJECT GOALS

1. Provide multi-generational fitness space emphasizing community.



2. Improve existing basketball court and create additional uses.



3. Maintain and protect existing healthy trees, remove trees in decline and supplement with new trees.



4. Ensure accessibility throughout park.

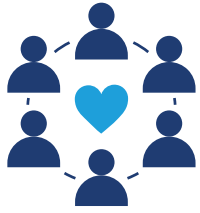


5. Provide new park amenities for improved experience.



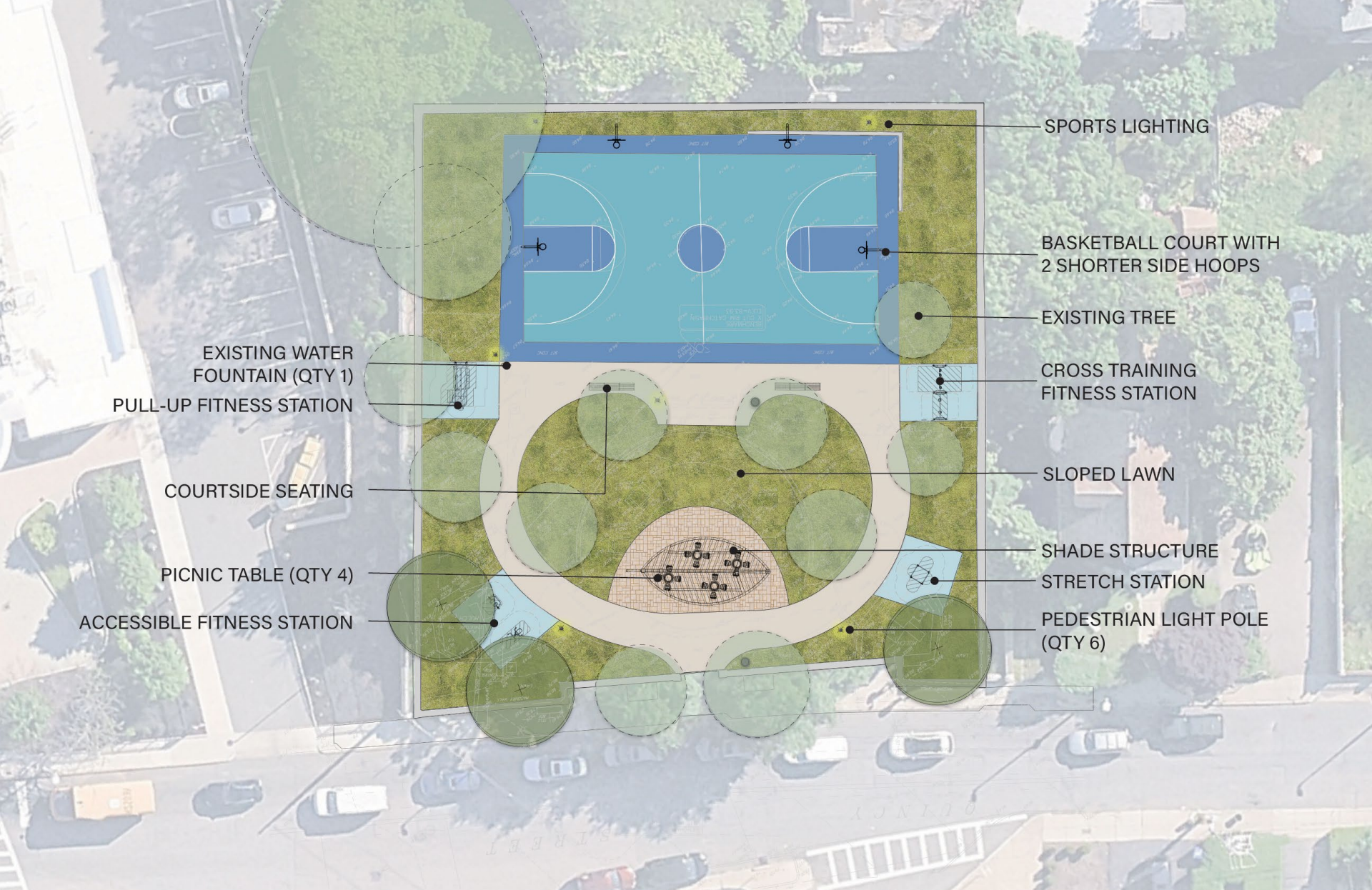
DESIGN CONCEPTS

Highlights



Concept 1 – Welcoming Plaza





- SPORTS LIGHTING
- BASKETBALL COURT WITH 2 SHORTER SIDE HOOPS
- EXISTING TREE
- CROSS TRAINING FITNESS STATION
- SLOPED LAWN
- SHADE STRUCTURE
- STRETCH STATION
- PEDESTRIAN LIGHT POLE (QTY 6)
- EXISTING WATER FOUNTAIN (QTY 1)
- PULL-UP FITNESS STATION
- COURTSIDE SEATING
- PICNIC TABLE (QTY 4)
- ACCESSIBLE FITNESS STATION

Concept 1 – Welcoming Plaza

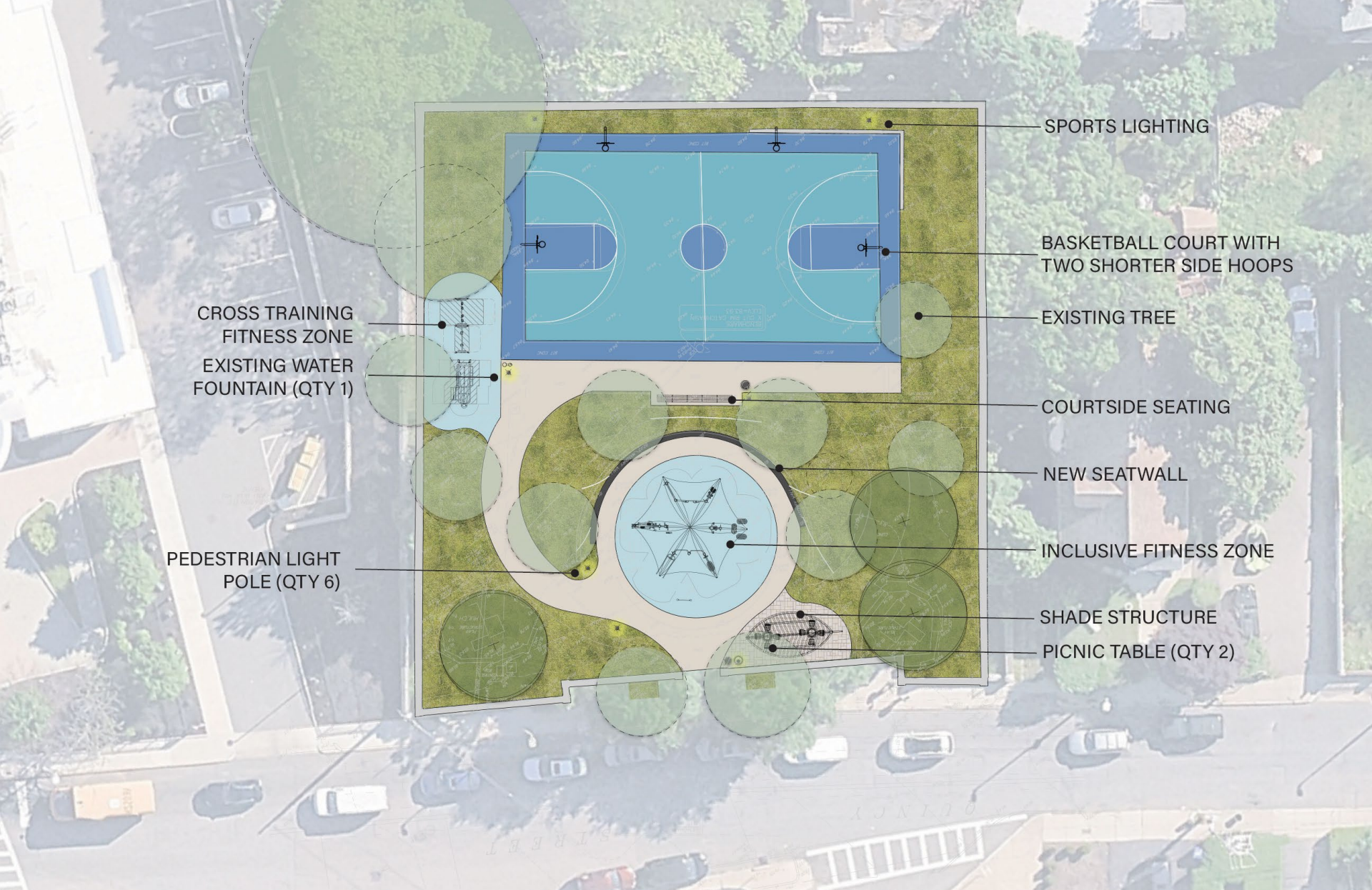


Highlights

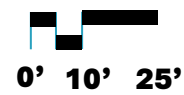


Concept 2 – Central Fitness Plaza

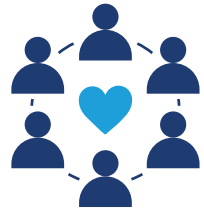




Concept 2 – Central Fitness Plaza

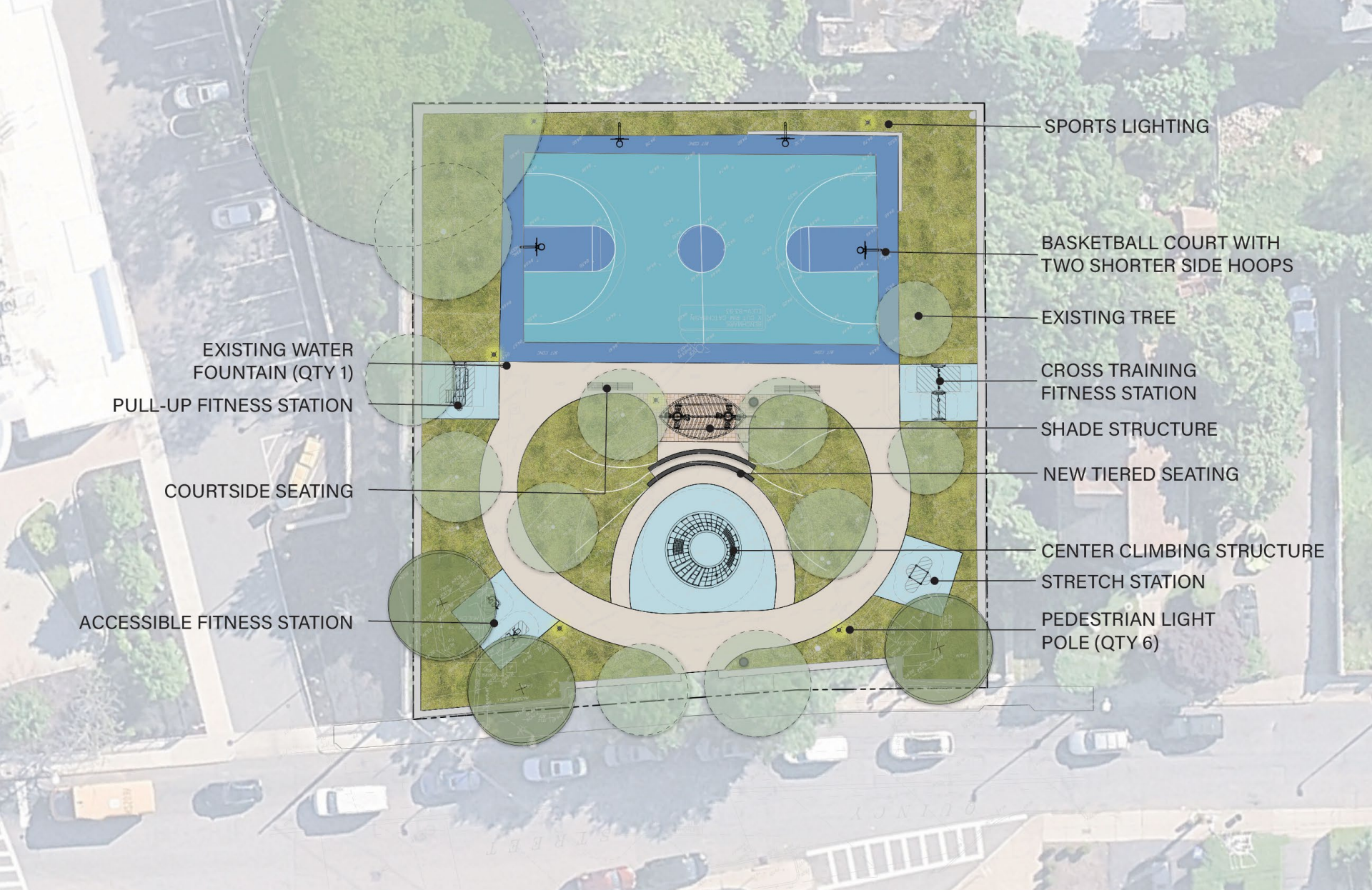


Highlights



Concept 3 – Terrace Plaza





- SPORTS LIGHTING
- BASKETBALL COURT WITH TWO SHORTER SIDE HOOPS
- EXISTING TREE
- CROSS TRAINING FITNESS STATION
- SHADE STRUCTURE
- NEW TIERED SEATING
- CENTER CLIMBING STRUCTURE
- STRETCH STATION
- PEDESTRIAN LIGHT POLE (QTY 6)
- EXISTING WATER FOUNTAIN (QTY 1)
- PULL-UP FITNESS STATION
- COURTSIDE SEATING
- ACCESSIBLE FITNESS STATION

Concept 3 – Terrace Plaza





- Higher intensity equipment located next to court
- Inclusive equipment is easily accessible for all users
- Inclusive fitness has a capacity of 7 users
- Higher Intensity fitness has a capacity of 7 users

Inclusive Fitness Equipment

Chest Press



Free Runner



Stretch Station



Higher Intensity Fitness Equipment

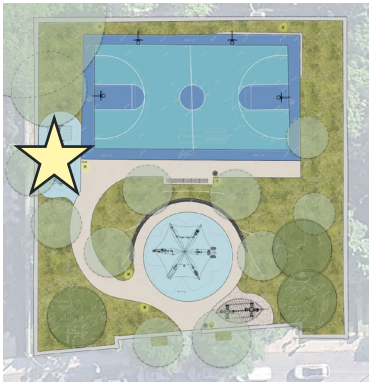
Cross Training Circuit Station



Pull-Up Bars Circuit Station



Concept 1 and 3 Fitness



- Located near basketball for high intensity exercise
- Function together as part of Cross Training system
- Capacity for 7 users across both pieces

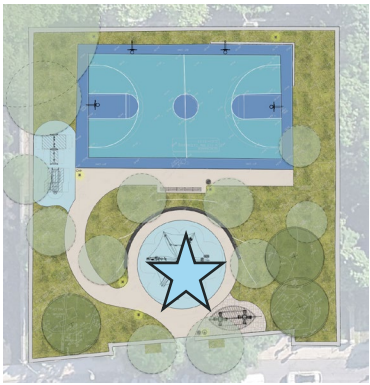


Cross Training Circuit Station



Pull-Up Bars Circuit Station

Concept 2 Cross Training Equipment



*CONNECTED FITNESS
EQUIPMENT*

HealthBeat Circuit from LSI



OR

*SEPARATED FITNESS
EQUIPMENT*

Super Gym M from Kompan



Inclusive Fitness Area Options



- 5-12 Inclusive Play Equipment with clear sightlines
- Play Equipment is fitness oriented for younger children as well as well for teens.
- 30 User Capacity



Concept 3 – Climbing Play Equipment (An example)



CAFÉ STYLE TABLES



OR

PICNIC TABLES

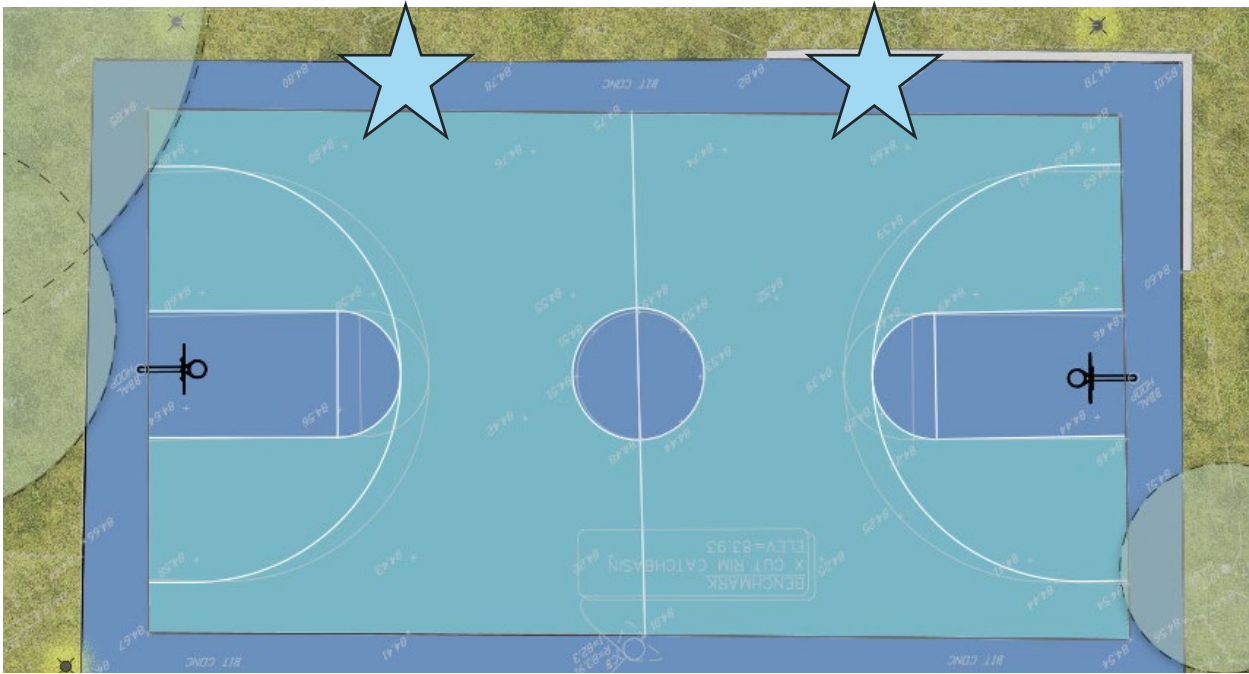


game decals can be added on either option

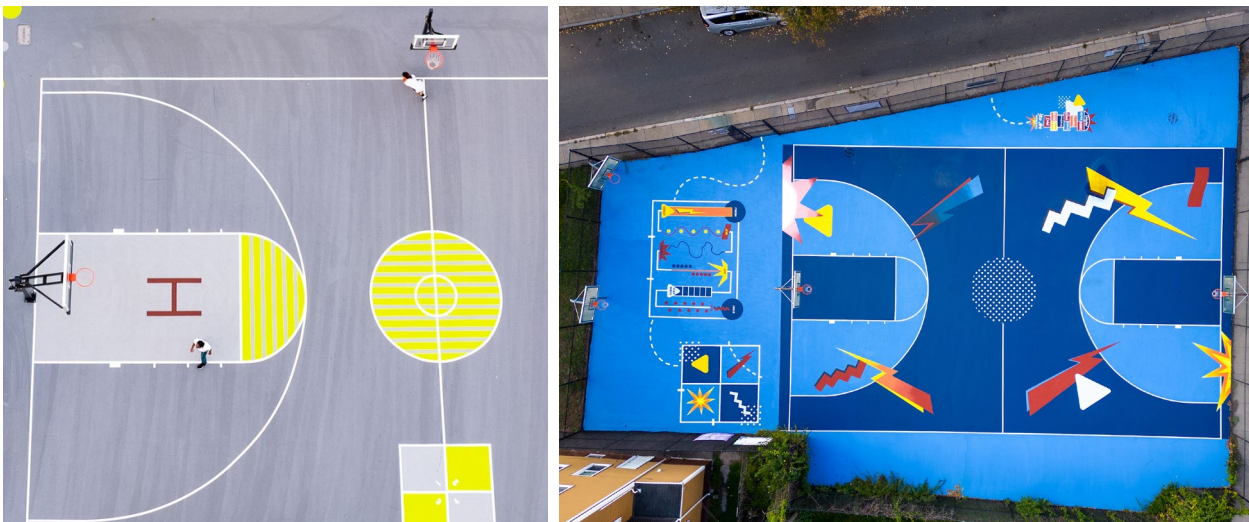
Plaza Seating Preference



ALL CONCEPTS - BASKETBALL COURT IMPROVEMENTS



Proposed Additional Shorter Hoop Locations.



Painted Games and Graphics
(Example: Fenlon Park, Dorchester)

All Concepts – Multi-Use Basketball Court

Low Bleacher Style Seating



Courtside Seating Preference



Backless Long Bench

OR





CONCEPT 1



WELCOMING PLAZA
Welcome, Flow, Gather

CONCEPT 2



CENTRAL FITNESS PLAZA
Separate, Stronger, Safer

CONCEPT 3



TERRACE PLAZA
Engage, Connect, Unify

Concept Preference



CONCEPT 1

WELCOMING PLAZA

*Welcome, Flow,
Gather*



CONCEPT 2

**CENTRAL FITNESS
PLAZA**

*Separate, Stronger,
Safer*



CONCEPT 3

TERRACE PLAZA

*Engage, Connect,
Unify*

Concept Preference

QUESTIONS?

FILL OUT THE SURVEY!



bit.ly/quincysurvey3