

STREET SAFETY TOOLKIT

SPEED HUMP

1



A **speed hump** is a gradual mound of asphalt installed in a regular pattern on a street to slow drivers to 20-25 MPH.

RAISED CROSSWALK

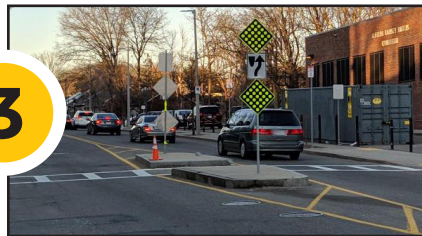
2



Raised crosswalks are like a speed hump and crosswalk in one. They make drivers slow down and be more aware of pedestrians.

CROSSING ISLAND

3



A **crossing island** allows people to pause while crossing multiple travel lanes.

SIDEWALK BUMP-OUT

4



A **bump-out** extends the sidewalk at the crosswalk. We install bump-outs on streets to provide better protection for pedestrians.

GREEN INFRASTRUCTURE

5



Green infrastructure uses plants, soil, and other natural materials to remove pollutants and absorb water back into the ground.

CONTRAFLOW BIKE LANE

6



Contraflow bike lanes provide two-way travel for cyclists on one-way streets for cars. They also help slow speeding cars visually narrowing extra wide lanes.

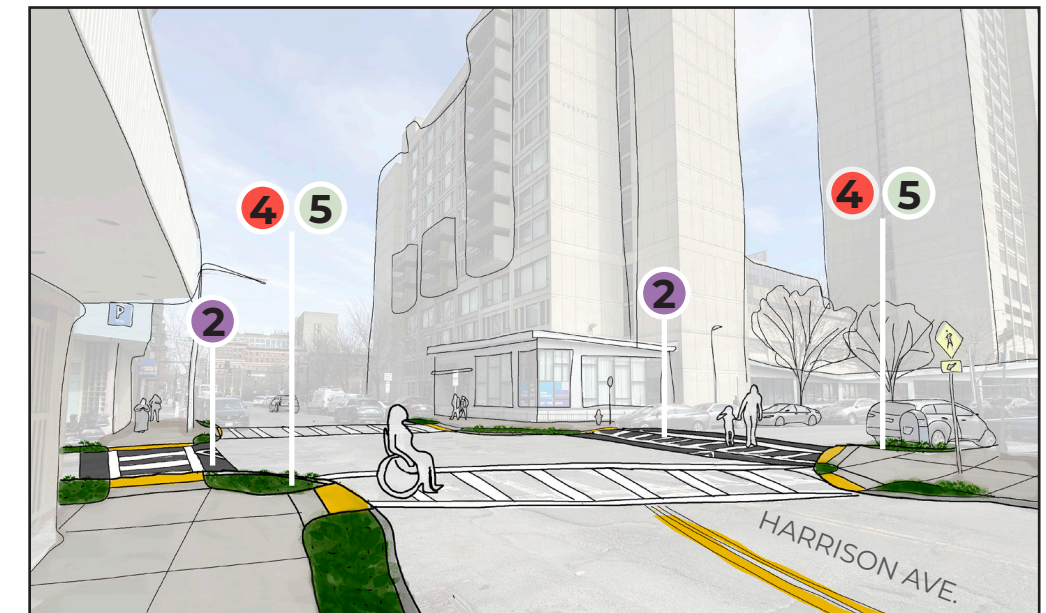
NORTHAMPTON SAFETY IMPROVEMENTS

NORTHAMPTON ST. AT TREMONT ST.

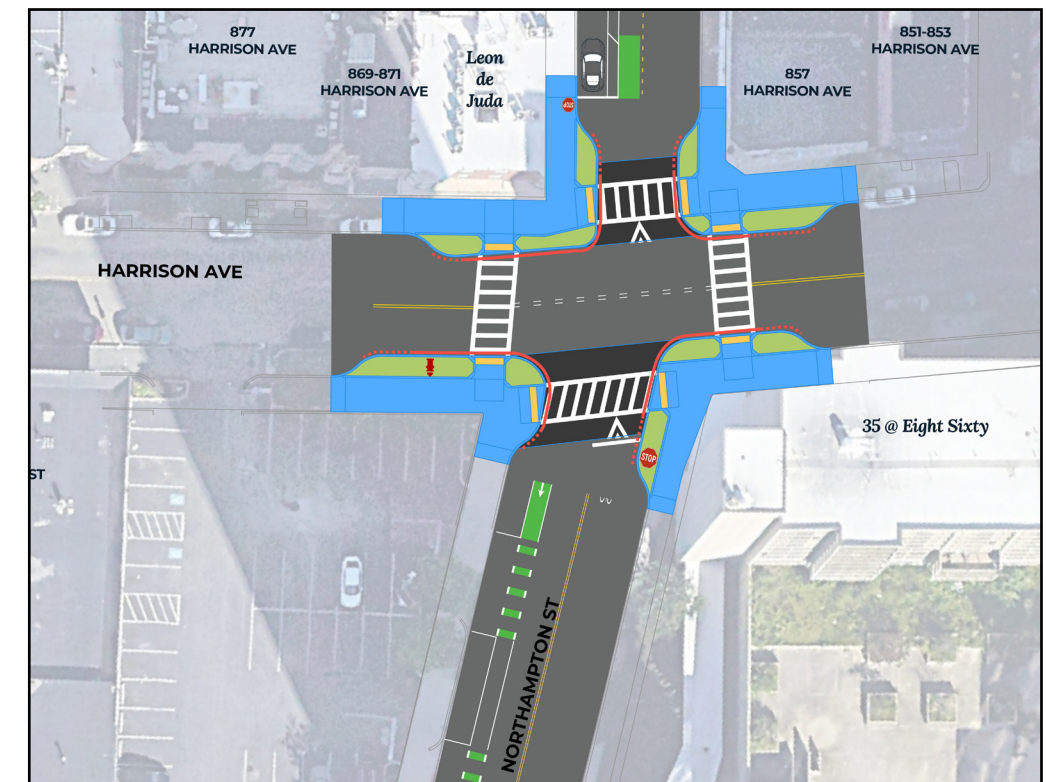
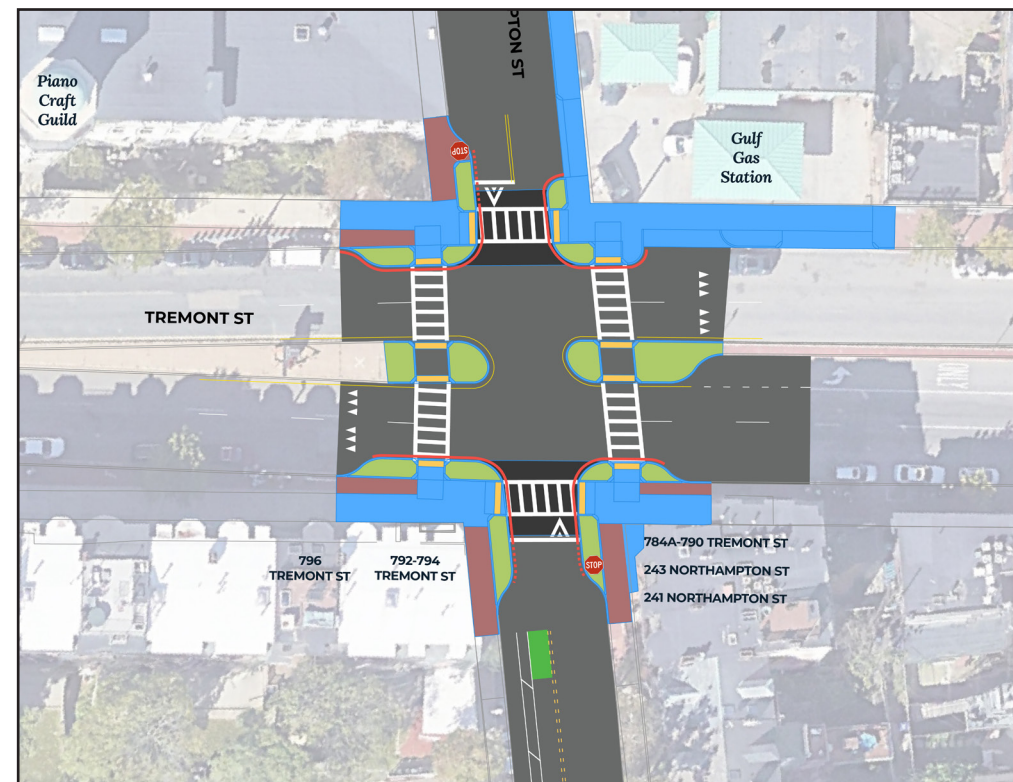


Raised crosswalks and **bump-outs** will slow drivers and make crosswalks safer and shorter. In addition, we'll rebuild the **crossing islands** on Tremont and add **green infrastructure**.

NORTHAMPTON ST. AT HARRISON AVE.



Raised crosswalks on Northampton St. and **bump-outs** will slow drivers and make these crosswalks safer. In addition, we'll add **green infrastructure** to the bump-



MORE INFO: boston.gov/lower-roxbury or email slow.streets@boston.gov

STREET SAFETY TOOLKIT

WASHINGTON ST. SAFETY IMPROVEMENTS

SPEED HUMP

1



A **speed hump** is a gradual mound of asphalt installed in a regular pattern on a street to slow drivers to 20-25 MPH.

RAISED CROSSWALK

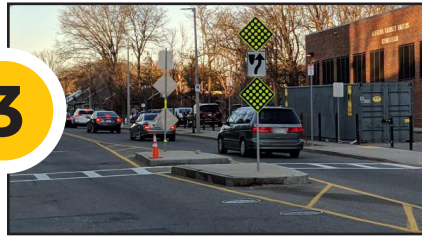
2



Raised crosswalks are like a speed hump and crosswalk in one. They make drivers slow down and be more aware of pedestrians.

CROSSING ISLAND

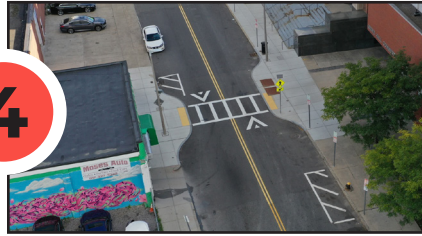
3



A **crossing island** allows people to pause while crossing multiple travel lanes.

SIDEWALK BUMP-OUT

4



A **bump-out** extends the sidewalk at the crosswalk. We install bump-outs on streets to provide better protection for pedestrians.

GREEN INFRASTRUCTURE

5



Green infrastructure uses plants, soil, and other natural materials to remove pollutants and absorb water back into the ground.

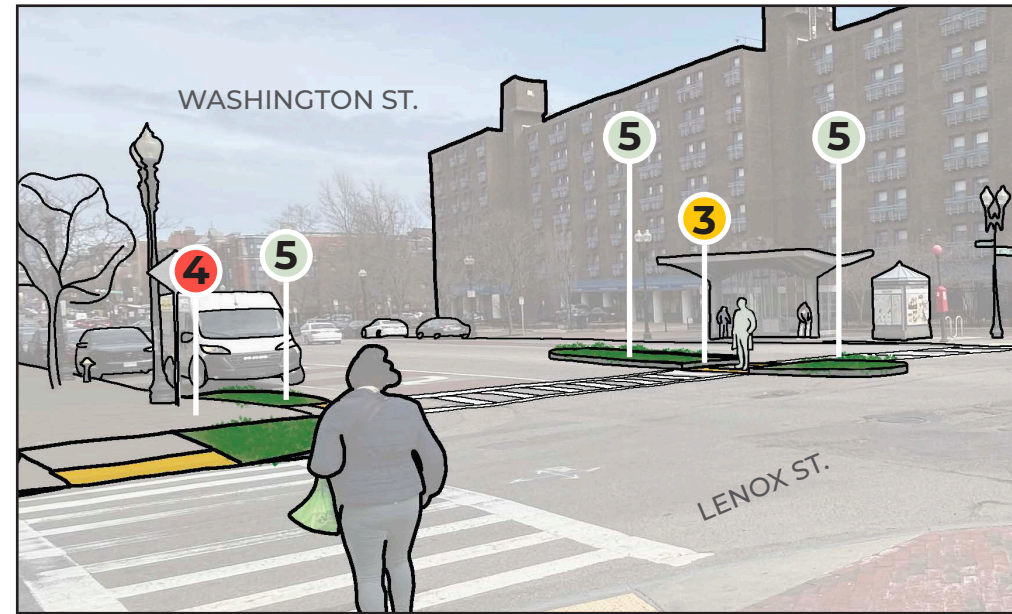
CONTRAFLOW BIKE LANE

6



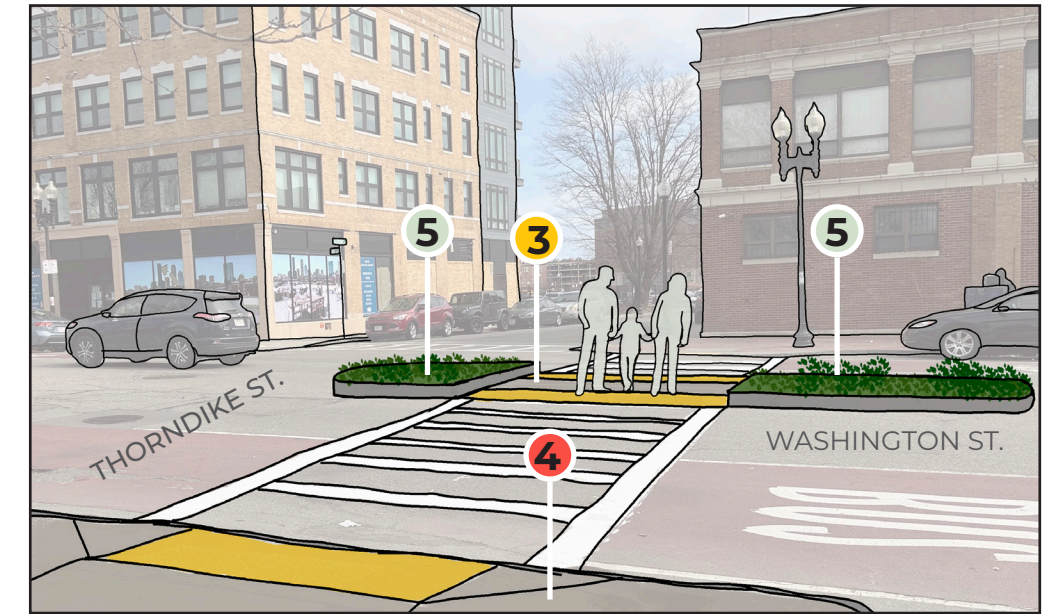
Contraflow bike lanes provide two-way travel for cyclists on one-way streets for cars. They also help slow speeding cars visually narrowing extra wide lanes.

WASHINGTON ST. AT LENOX ST.

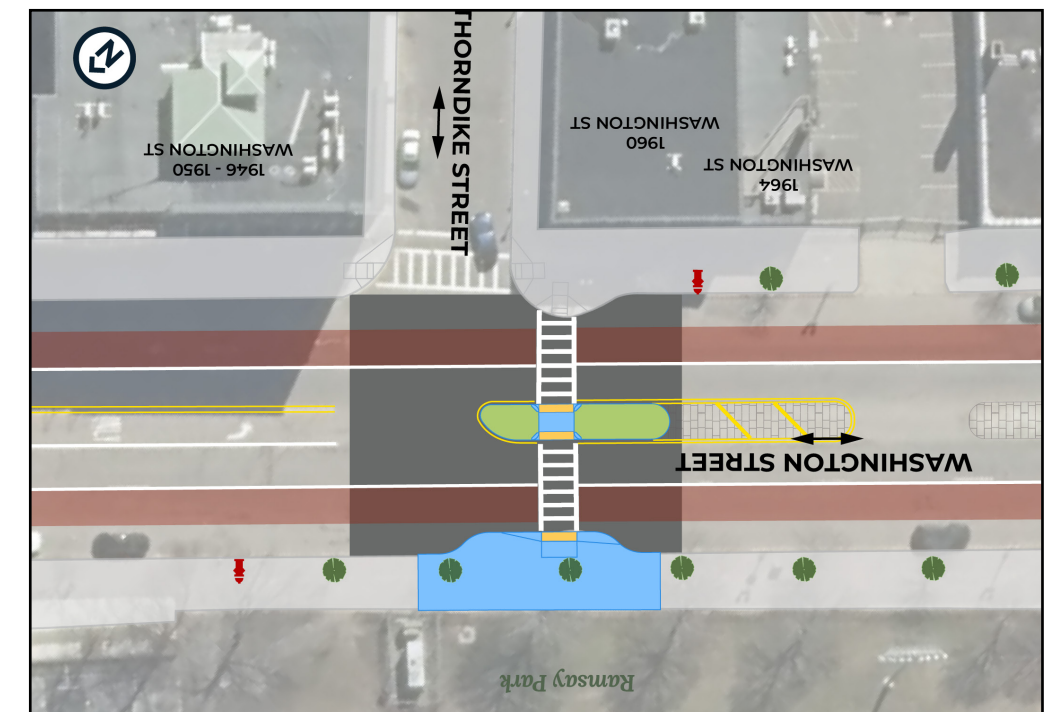
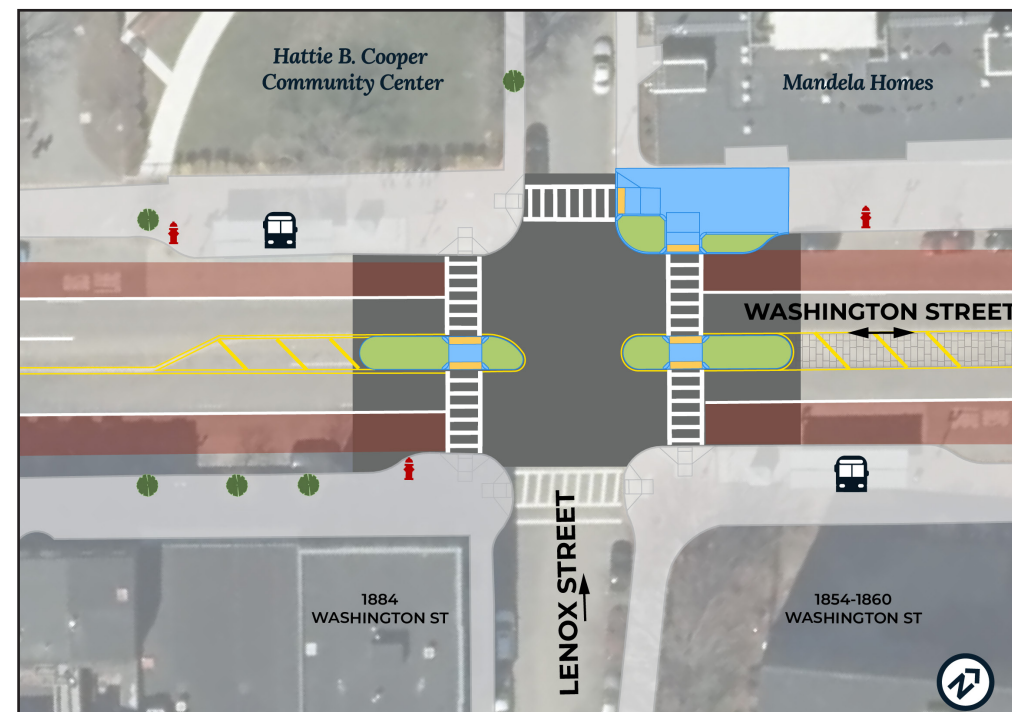


Crossing islands will encourage drivers to slow down and make them more aware of pedestrians in the crosswalk. In January 2025, a driver hit and killed a pedestrian at this intersection. We will also add **green infrastructure**.

WASHINGTON ST. AT THORNDIKE ST.



A **crossing island** and **bump-out** will encourage drivers to slow down and make them more aware of pedestrians in the crosswalk. We will also add **green infrastructure**.

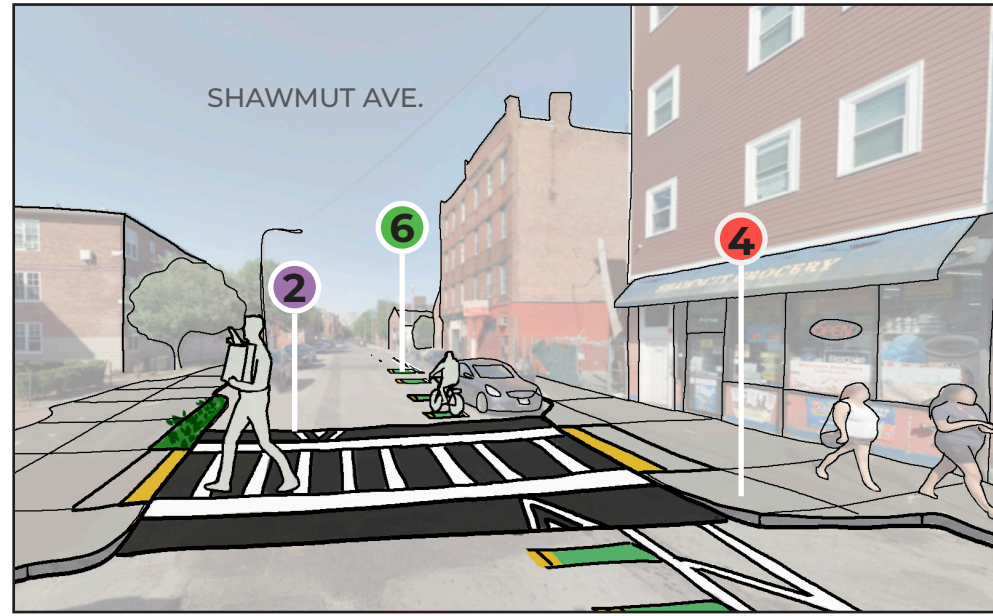


MORE INFO: boston.gov/lower-roxbury or email slow.streets@boston.gov

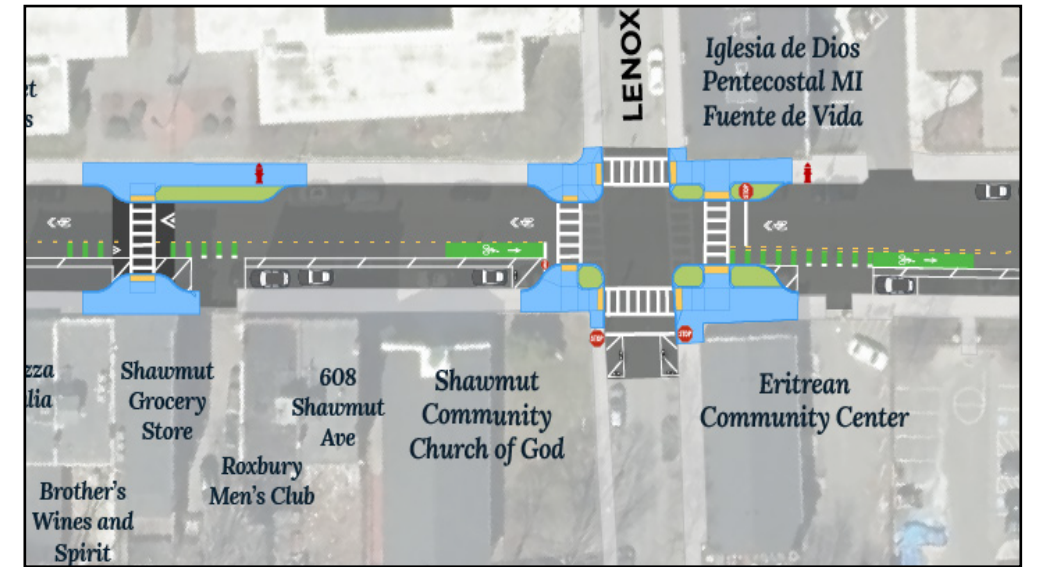
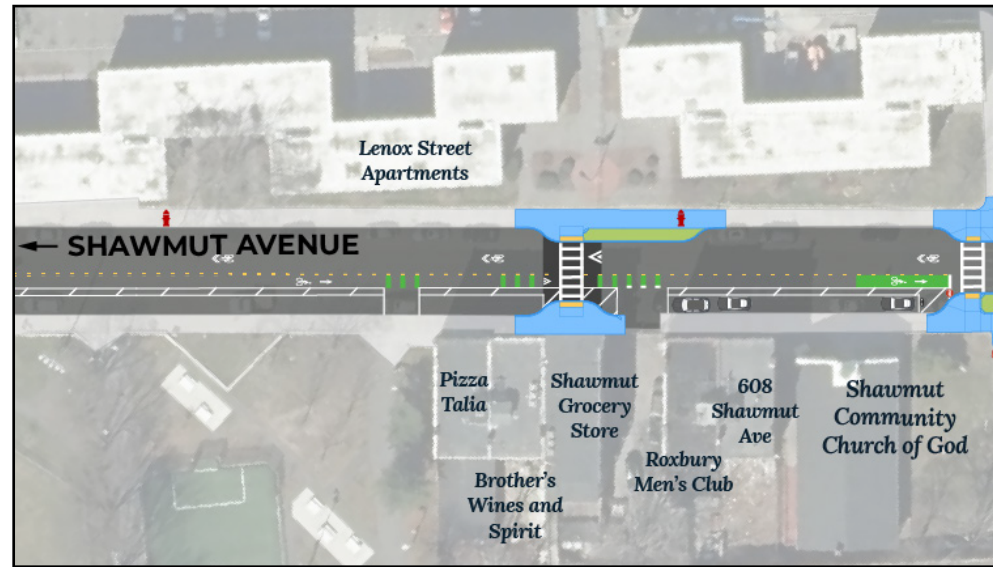
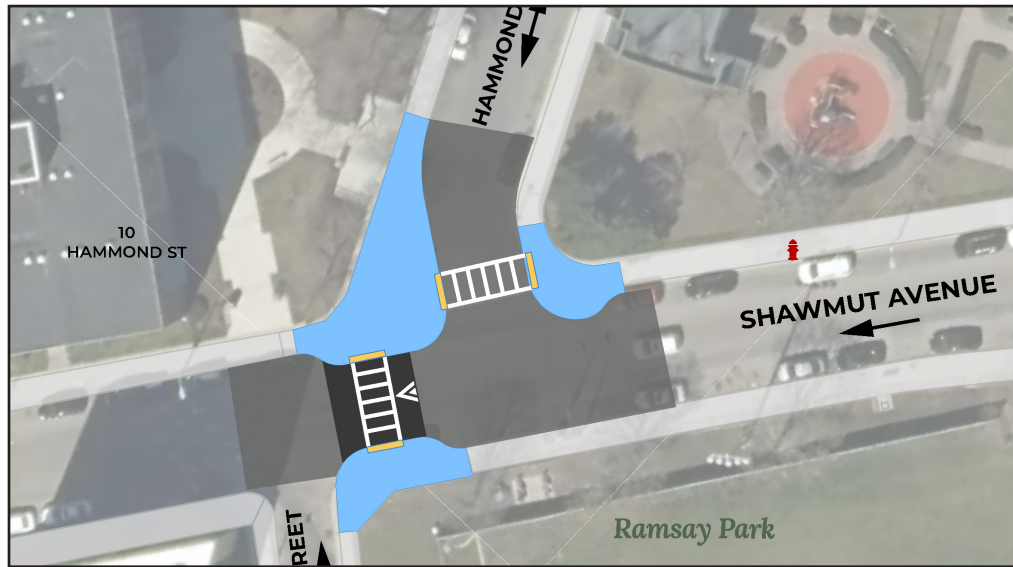
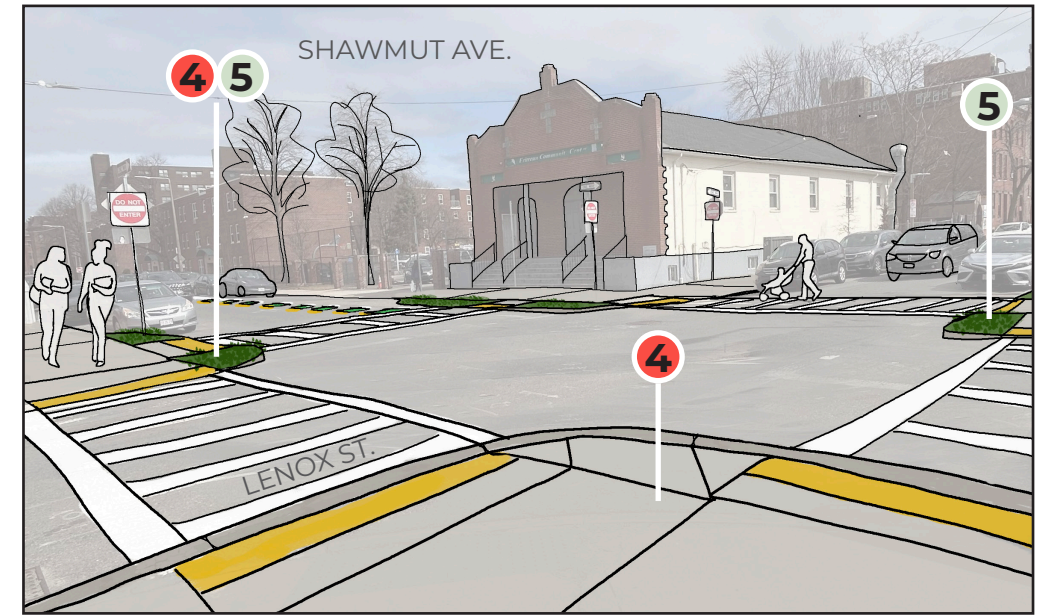
SHAWMUT AVE. AT HAMMOND ST.



SHAWMUT AVE. MID-BLOCK



SHAWMUT AVE. AT LENOX ST.



SPEED HUMPS



1

A **speed hump** is a gradual mound of asphalt installed in a regular pattern on a street to slow drivers to 20-25 MPH.

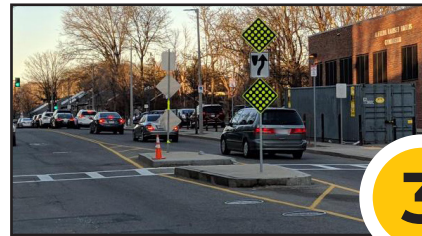
RAISED CROSSWALKS



2

Raised crosswalks are like a speed hump and crosswalk in one. They make drivers slow down and be more aware of

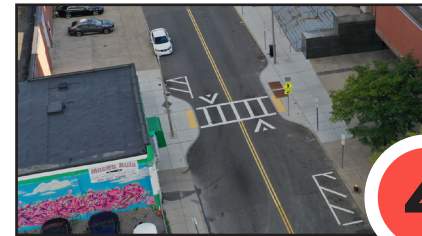
CROSSING ISLANDS



3

A **crossing island** allows people to pause while crossing multiple travel lanes.

SIDEWALK BUMP-OUTS



4

A **bump-out** extends the sidewalk at the crosswalk. We install bump-outs on streets to provide better protection for pedestrians.

GREEN INFRASTRUCTURE



5

Green infrastructure uses plants, soil, and other natural materials to remove pollutants and absorb stormwater.

CONTRAFLOW BIKE LANES



6

Contraflow bike lanes provide two-way travel for cyclists on one-way streets for cars. They also help to reduce speeding.

UTILITY WORK



1

1-2 weeks/location

EXCAVATE AND FORM CURB MOLDS



2

2-3 weeks/location

POUR SIDEWALKS



3

2-3 weeks/location

SIGNS, PAVE, THEN ADD MARKINGS



4

1-2 weeks

	JUNE	JULY	AUGUST	SEPTEMBER	OCTOBER
--	------	------	--------	-----------	---------

TREMONT/
NORTHAMPTON



HARRISON/
NORTHAMPTON



SHAWMUT/KENDALL



SHAWMUT/LENOX



WASHINGTON/
THORNDIKE



SHAWMUT/
HAMMOND



WASHINGTON/EAST
LENOX



HARRISON/EAST
LENOX

