

# **BARBER SHOP**

## **EXTERIOR SIGNAGE SUBMISSION**

**35 THOMSON PLACE**

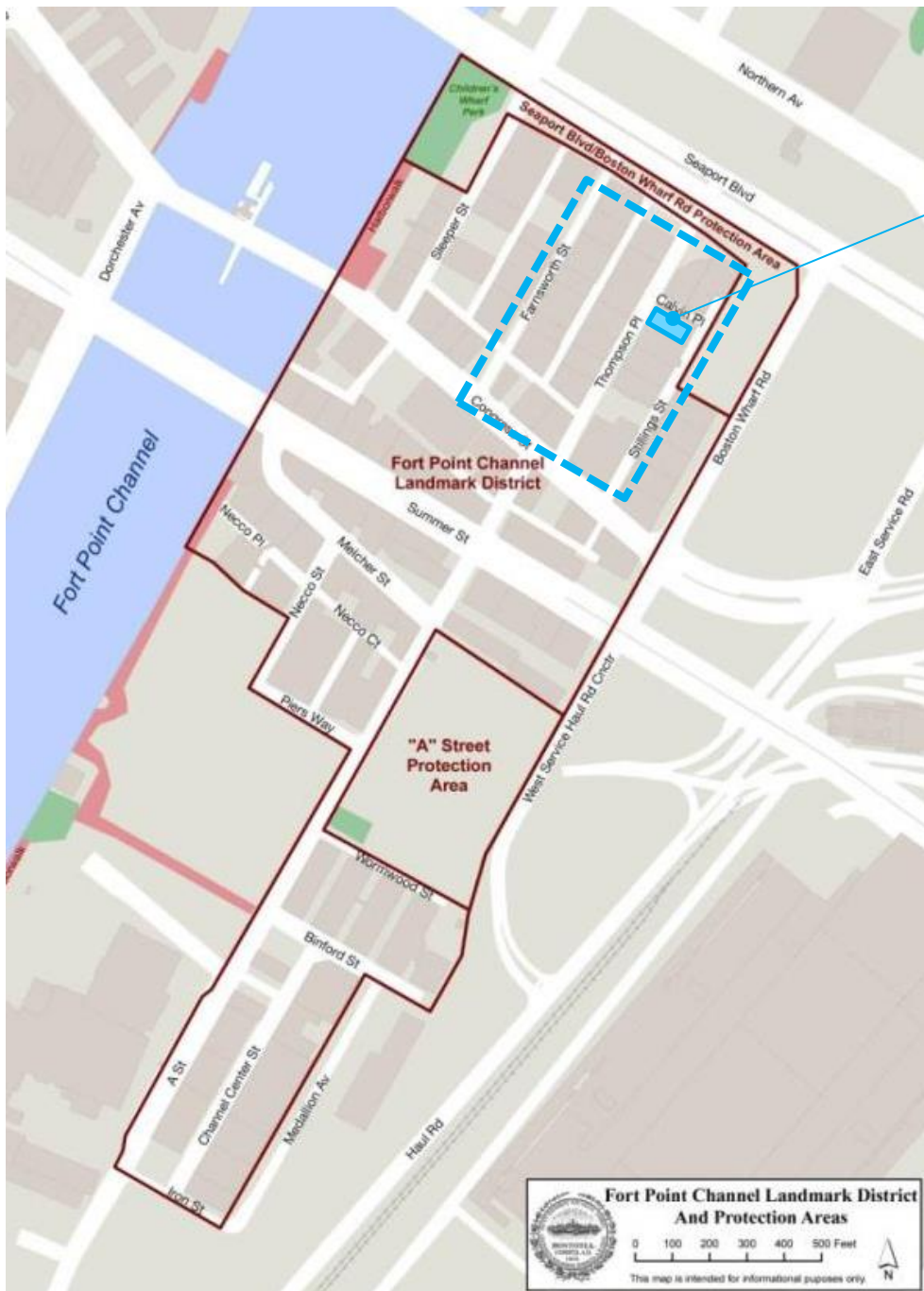
# DESIGN REVIEW AGENDA

LOCATION OF BUILDING WITHIN DISTRICT

EXISTING NEIGHBORHOOD SIGNAGE REFERENCE

PROPOSED SIGNAGE ELEMENTS

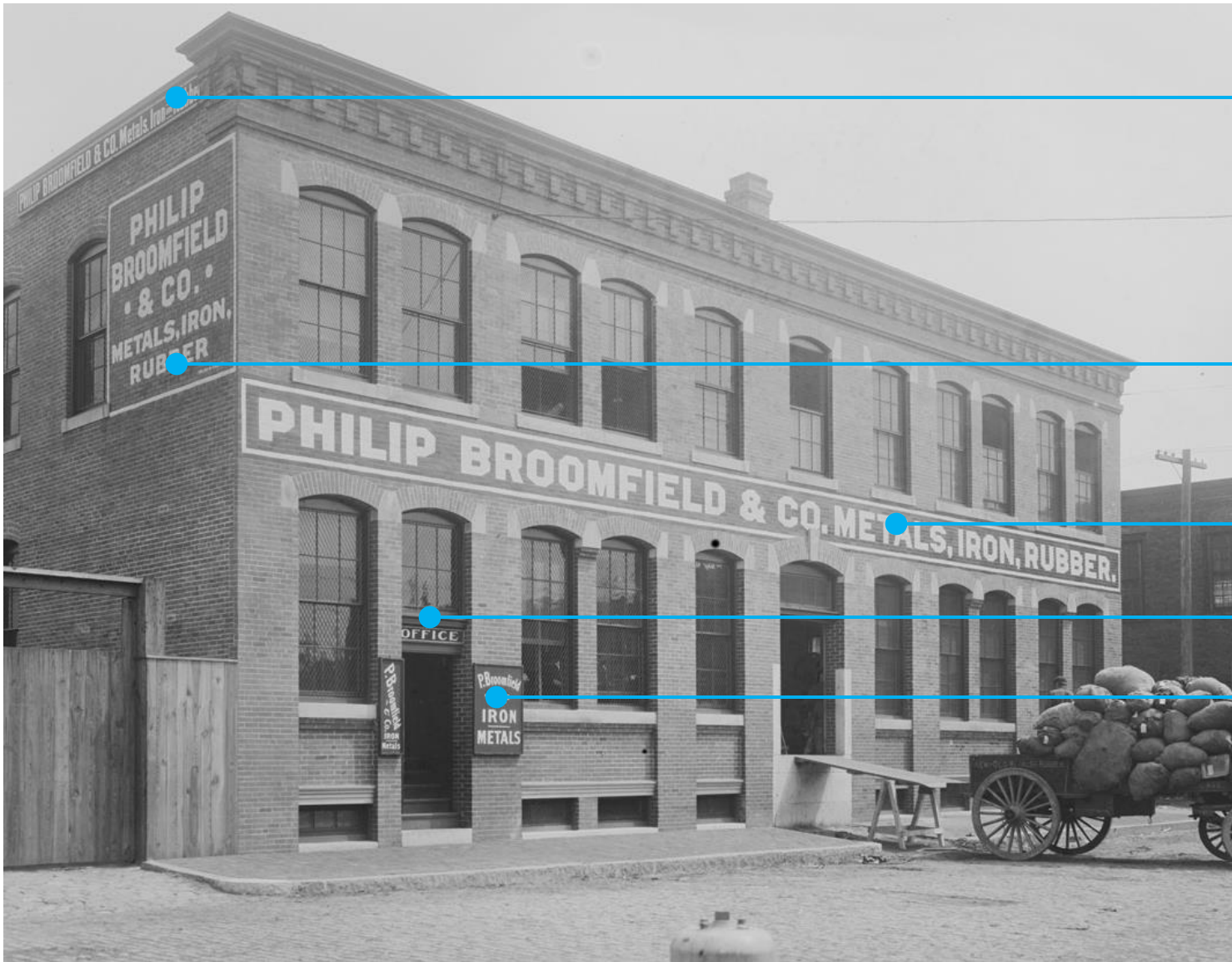
- 35 THOMSON EXISTING CONDITIONS
- 35 THOMSON SIGNAGE DESIGN
- 35 THOMSON SIGNAGE DETAILS



35 THOMSON PLACE



## FORT POINT CHANNEL LANDMARK DISTRICT



## SIGNAGE TYPES

COMPANY NAME (& OFFERINGS)  
PAINTED ON WOOD SIGN

COMPANY NAME (& OFFERINGS)  
PAINTED ON BRICK FACADE

COMPANY NAME (& OFFERINGS)  
PAINTED ON BRICK FACADE

COMPANY FUNCTION  
PAINTED ON WOOD FACADE

COMPANY NAME AND/OR  
OFFERINGS PAINTED ON BRICK

TYPICAL STOREFRONT LOCATIONS WITH PAINTED BRICK & PAINTED WOOD

## HISTORIC SIGNAGE REFERENCE

---



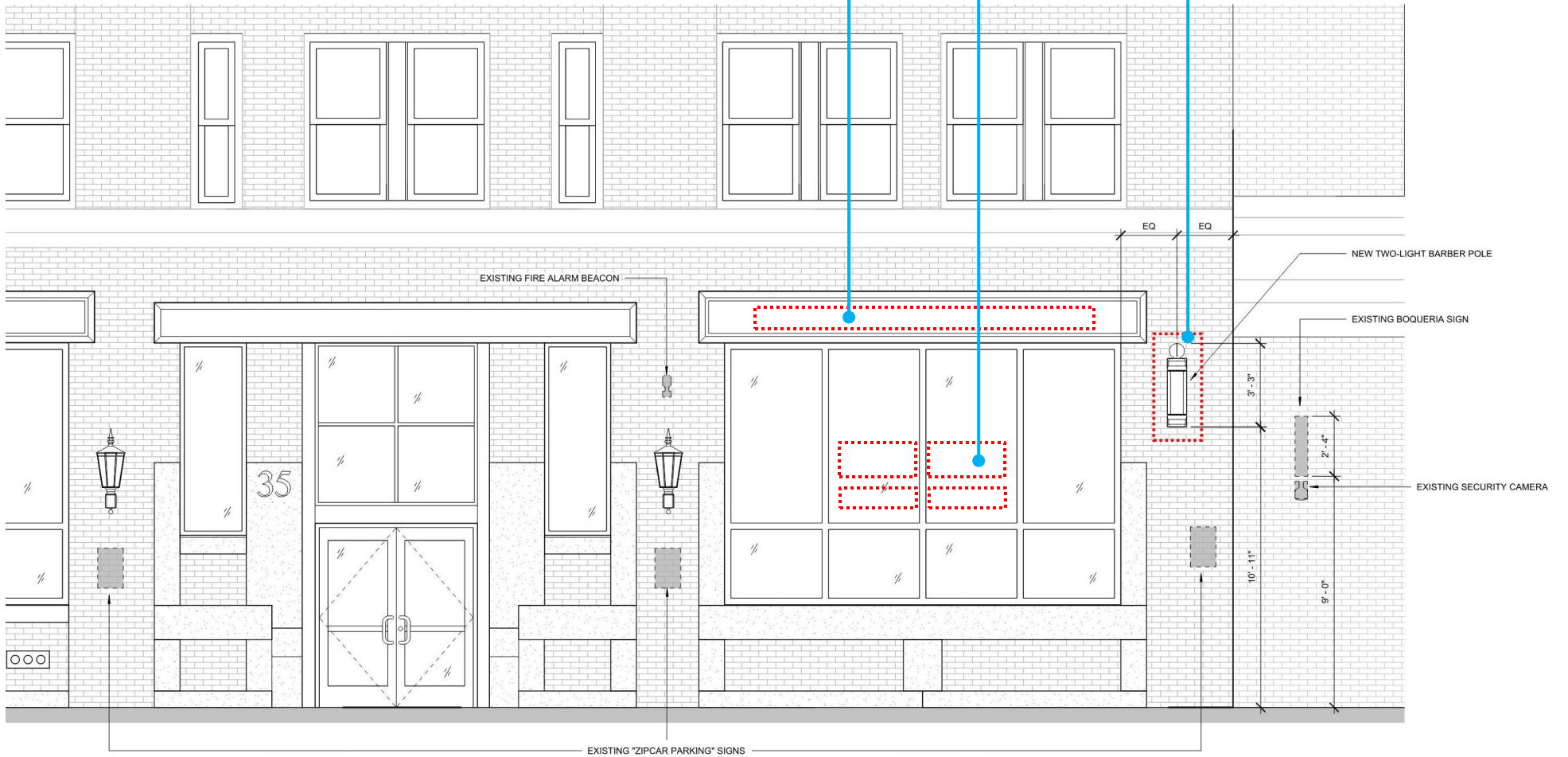
EXISTING CONDITION PHOTO

35 THOMSON PLACE – VIEW FROM ACROSS STREET

WHITE LETTERING  
ON EXISTING STEEL LINTEL

VINYL FILM  
ON GLASS

BARBER  
POLE



35 THOMSON PLACE

34 THOMSON PLACE

## PROPOSED SIGNAGE ITEMS



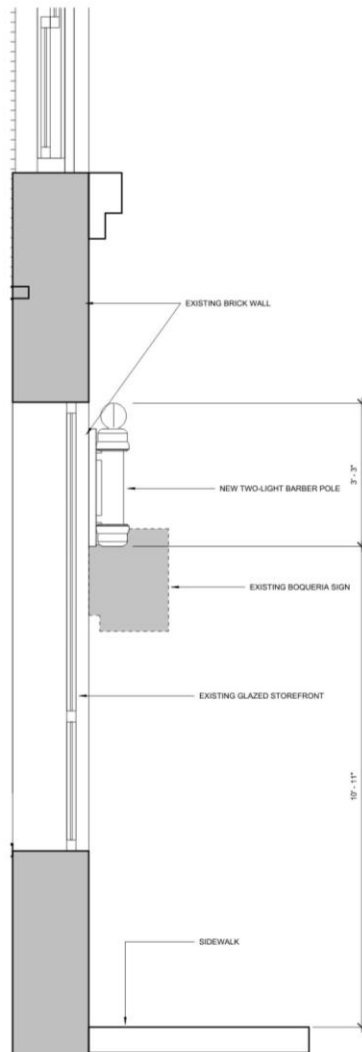
Thumbnail image

**PRODUCT SPECIFICATIONS:**

Manufacturer:	Marvey
Style:	#77 Barber Pol
Height:	39" with glass globe 32" without glass globe
Width:	9"
Projection from wall:	11"
Length of glass cylinder:	20"
Diameter of glass cylinder:	6"

**PRODUCT DESCRIPTION:**

Revolving barber pole  
Traditional barber stripe cylinder  
Lit with a deluxe frosted globe on top  
Weatherproof and approved for the outdoors



## BARBER POLE MOUNTING HEIGHT



BARBER POLE RENDERING



VINYL FILM LETTERING INFORMATION