



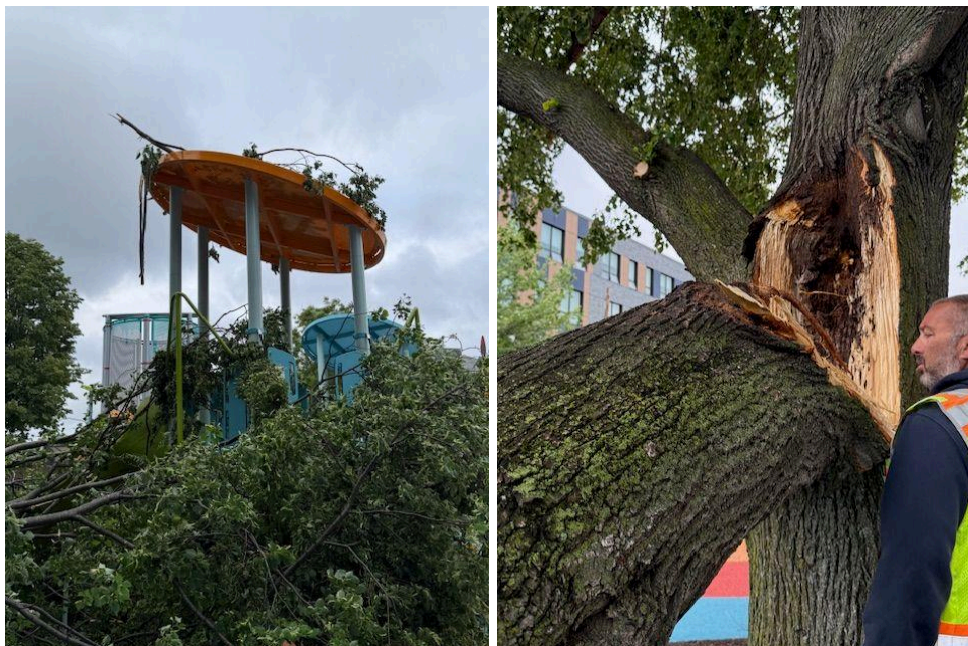
## CLIFFORD PLAYGROUND CONSTRUCTION UPDATE JUNE, 2026

**Thank you for your continued interest in Clifford Park!  
We have a few big updates.**

### **TREE REMOVAL:**

During a recent storm, one of the large Linden trees in the playground lost about a third of the tree on top of the playground equipment. Boston Parks has had the tree and the playground equipment assessed for safety.

- The playground equipment has been assessed and the few minor damaged areas have been fixed by the playground manufacturer.
- The tree was assessed by certified arborists and the City of Boston Tree Warden, and unfortunately the tree has interior structural damage and must be removed for safety reasons. In order to get the playground opened for the last week of school, **we will be removing the remainder of this tree tomorrow**. We are sorry for the short notice.



*Tree damage from recent storm*

### **CONSTRUCTION TIMELINE:**

- Playground will open Monday, June 22 for the school to enjoy for the final week of school
- The field will be opened at the beginning of July for summer camp use
- The remainder of the park is scheduled to be completed by the end of August

## CONSTRUCTION SINCE EARLY SPRING:

- Playground surfacing installation complete
- Dugouts and score board installation is complete
- Dog Park area has been completed
- Artificial turf field has begun installation and should be completed in the coming days
- Fencing and lighting have been installed
- Pathway paving has begun
- Shade shelters and site furnishing installation has begun

## WORK TO ANTICIPATE IN THE COMING MONTHS:

- **FULL PARK COMPLETION!**
- Basketball and Tennis court installed
- Final site furnishing installed
- Remainder of pathways installed

## SITE PHOTOS



Asphalt sidewalk base  
course installation



Shade shelter and table/chair installation]



*Dog park/ new tree installation*



*Artificial turf installation*



*Shaded dugout installation, player benches to come*

**THIS IS A BOSTON RESIDENTS JOBS POLICY PROJECT:**

**For employment opportunities, call Argus Construction at (781) 275-7417**

**OTHER ITEMS:**

Please use 311 to document non-emergency issues relating to park use, and 911 for emergency situations relating to public safety.

Lauren Bryant, Project Manager [Lauren.Bryant@boston.gov](mailto:Lauren.Bryant@boston.gov)

Project Website: [boston.gov/clifford-playground](http://boston.gov/clifford-playground)