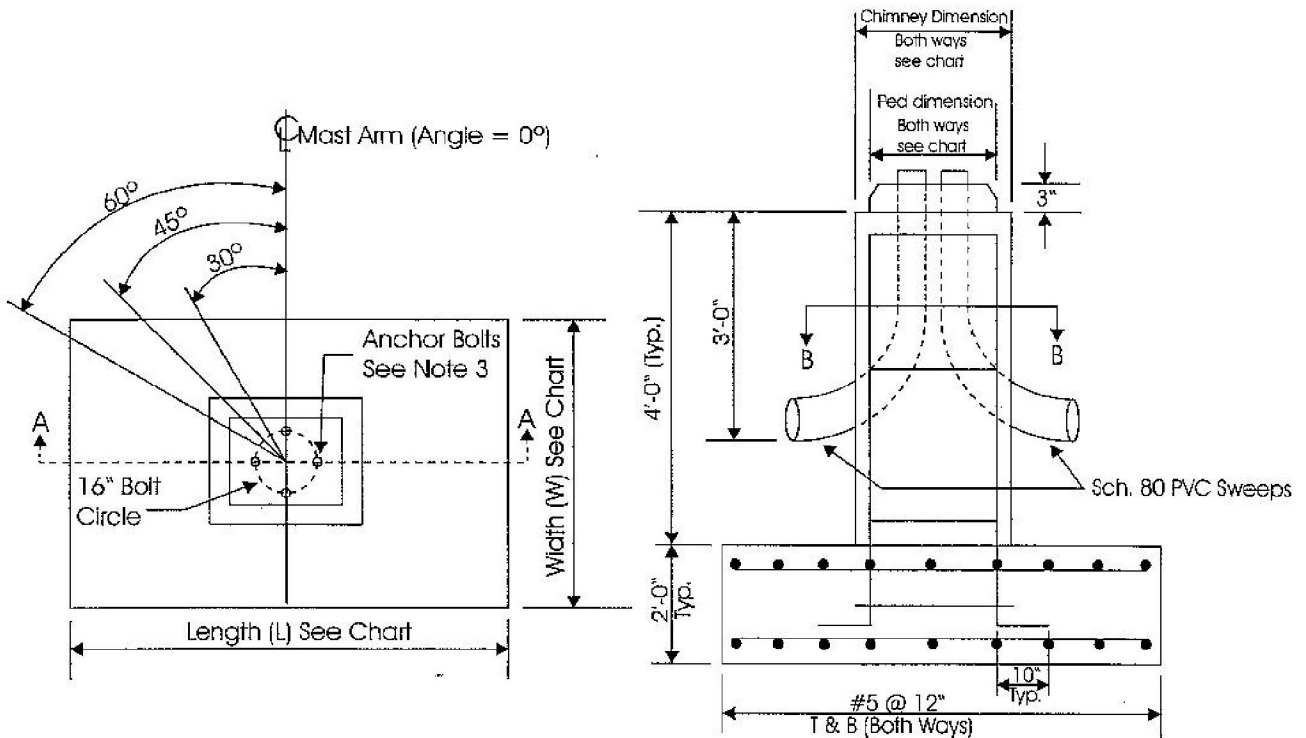


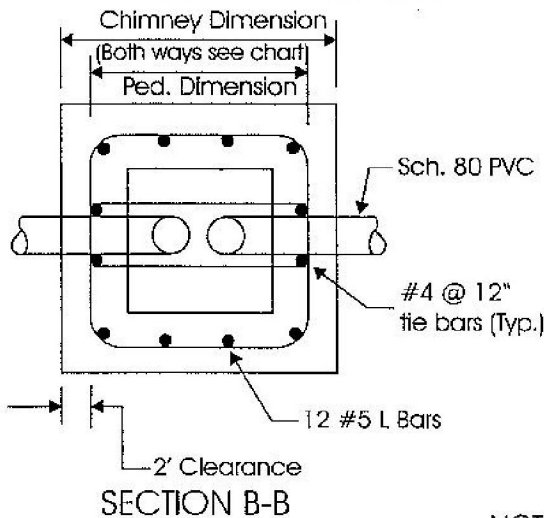
STANDARD MAST ARM SPREAD FOOT FOUNDATION



FOUNDATION DESIGN CHART

ANGLE (See General Note #6)	MAST ARM	FOUNDATION SIZE		CHIMNEY DIMENSION	PEDESTAL DIMENSION
	LENGTH	LENGTH (L)	WIDTH (W)		
0°	20 ft. - 25 ft.	7' - 0"	5' - 0"	2' - 0"	1' - 8"
	30 ft. - 35 ft.	8' - 0"	6' - 0"	2' - 6"	1' - 8"
30°	20 ft. - 25 ft.	7' - 6"	5' - 6"	2' - 0"	1' - 8"
	30 ft. - 35 ft.	8' - 6"	6' - 6"	2' - 6"	1' - 8"
45°	20 ft. - 25 ft.	8' - 0"	6' - 0"	2' - 0"	1' - 8"
	30 ft. - 35 ft.	9' - 0"	7' - 0"	2' - 6"	1' - 8"
60°	20 ft. - 25 ft.	9' - 0"	7' - 0"	2' - 0"	1' - 8"
	30 ft. - 35 ft.	9' - 6"	7' - 6"	2' - 6"	1' - 8"

SECTION A-A



SECTION B-B

GENERAL NOTES:

1. Foundations shall be class "A" concrete masonry.
2. Reinforcement shall be A.S.T.M. A 615-Gr. 60.
3. Bolt circle and anchor bolts shall be provided by the contractor and shall be consistent with mast arm design. The anchor bolts shall be provided with a template for setting the bolts and necessary bolt projections.
4. Provide for the electrical conduit as required.
5. The foundations shown on this drawing are for a 20, 25, 30 & 35 ft. cantilevered type I mast arm carrying 4-way, 3-section, 12" traffic signal housings, free swinging at the end of the arm.
6. The angle of the mast arm to the foundations measured from the YY axis to the centerline of the mast arm shown on this plan.
7. Foundation shall be made in a two-pour method per M.D.P.W.S.S.H.B.
8. If utilities or other obstructions are encountered the contractor shall backfill the area to its original condition until an alternative design has been provided by the contractor's design engineer.

Rev. 5-29-98

NOT TO SCALE

A 2.4