

# PRIORITY PROJECT Egleston Square Improvements

The crossing of Washington Street and Columbus Avenue is a wide expanse of pavement today which is a challenge no matter what mode you're using to get to a destination. In order to create a design that accommodates all modes, we are evaluating traffic conditions at the intersection first. These help determine feasible action items, and will be followed by additional design for bicycle accommodations at the intersection, and programming of public space. This is just the first step. Talk through the design with our team. What elements do you prefer?

Concepts are shown with a variety of designs for Columbus Avenue and Washington Street. Northbound bus priority (Action Item 3.1) is not possible under Concept 1. Both concepts accommodate bus priority on Columbus (Action Item 3.2). See transit board for further details.



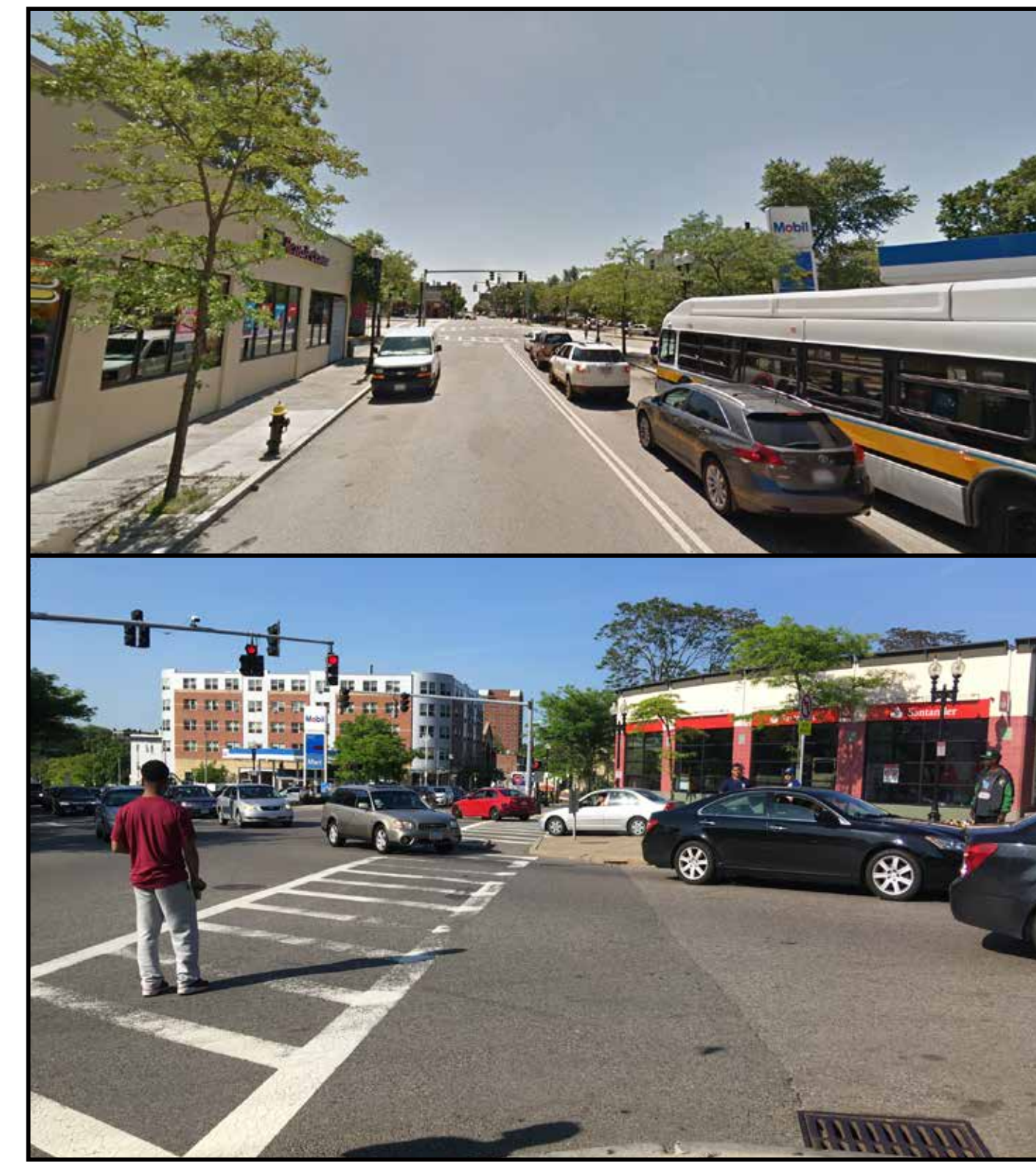
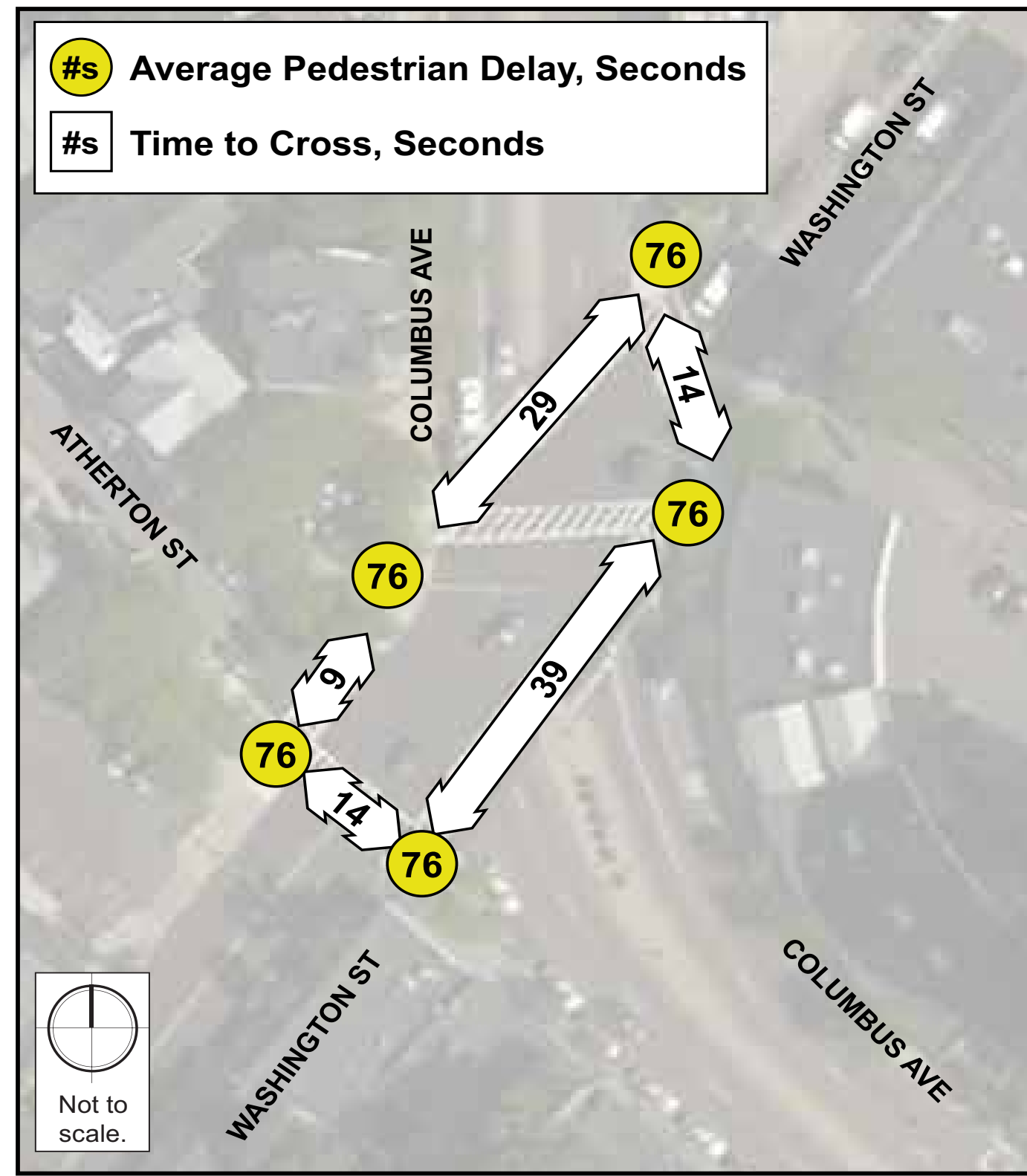
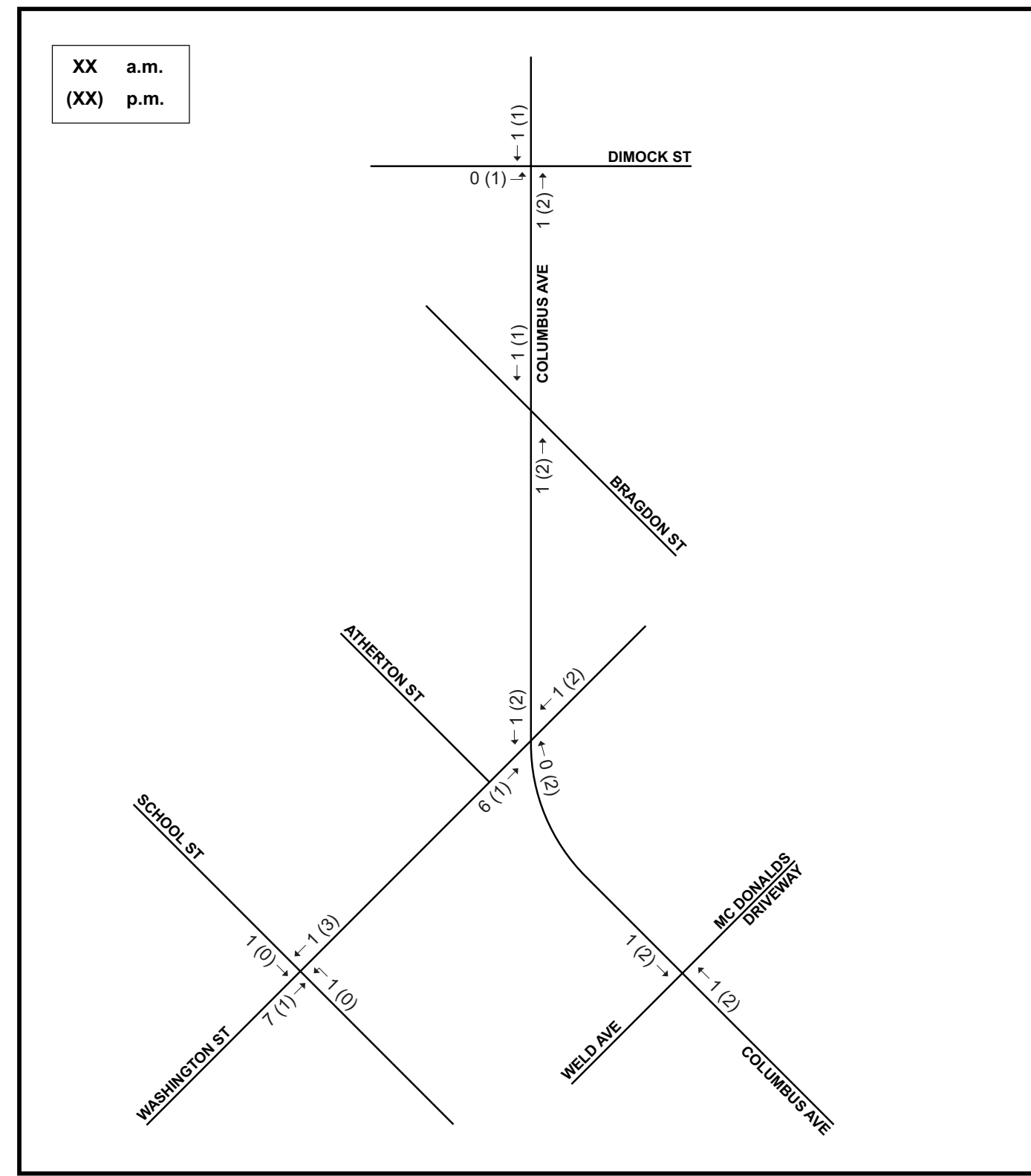
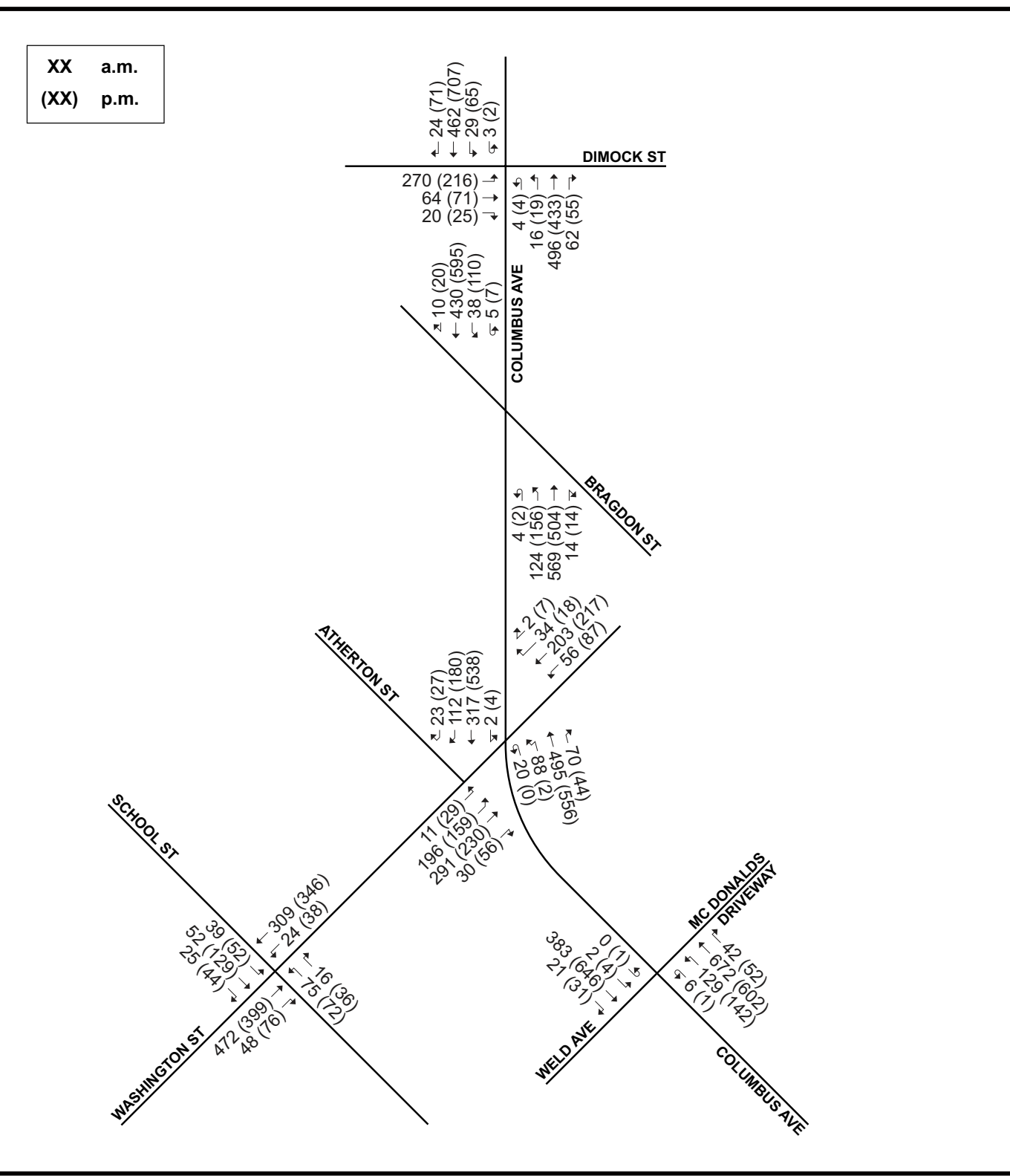
## How many people use this intersection? COUNTS FROM APRIL 2018

Traffic Volumes, Weekday Peak Hour

Bicycle Volumes, Weekday Peak Hour

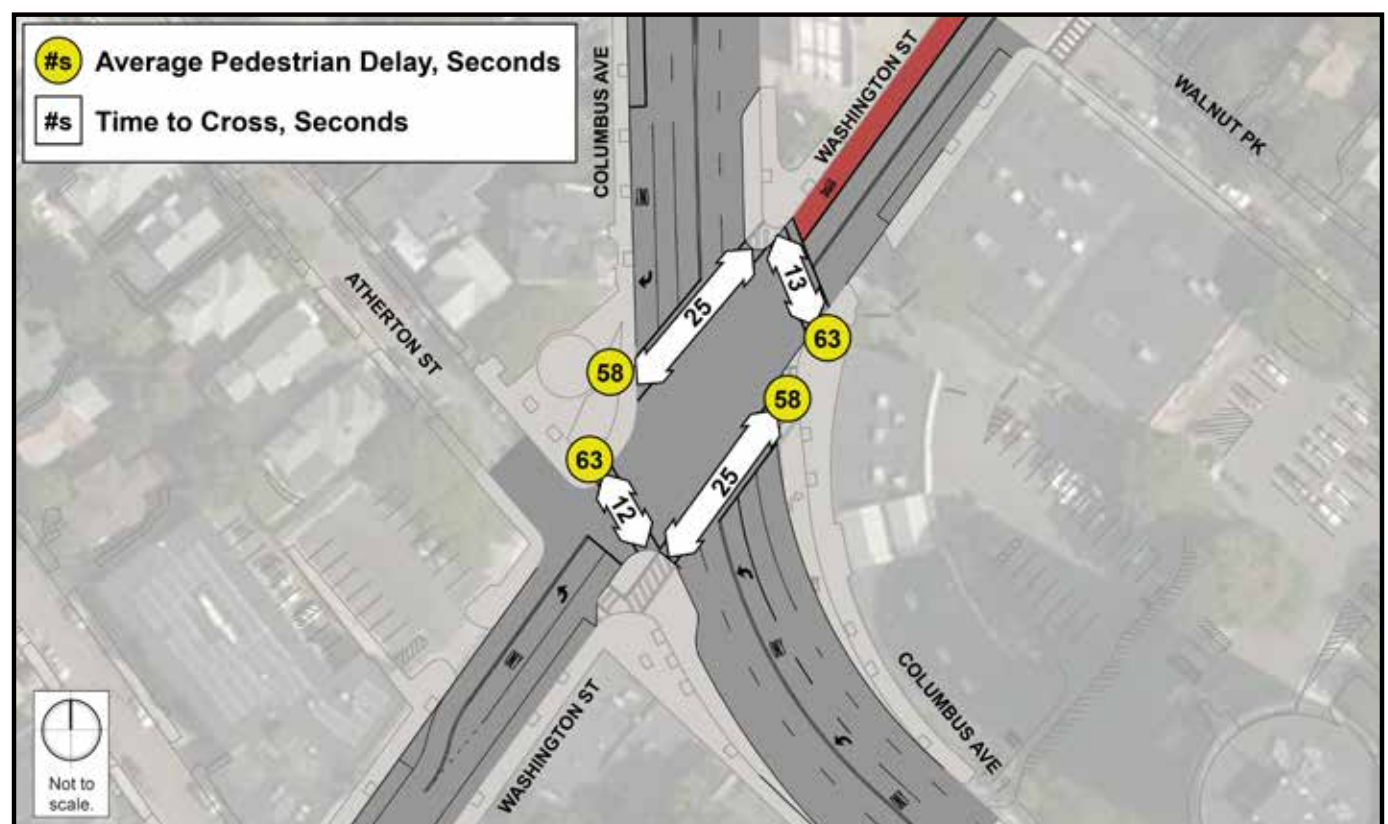
How long does it take to cross?

Egleston Square Today



### Concept 1

How long does it take to cross?



### Concept 2

How long does it take to cross?

