



JP/Rox Transportation Action Plan

Fourth Public Meeting | October 23, 2018



JP/Rox TAP Mission

An action plan for improving the JP/Rox area's present and future transportation network that is sourced in and actively supported by the community.

The JP/Rox Community

City Team

Boston Transportation Department

Boston Planning and Development Agency

Office of Neighborhood Services

Public Works Department

Department of Neighborhood Development

Disabilities Commission

Consultant Team

Howard Stein Hudson

Fitzgerald & Halliday Inc

NBBJ

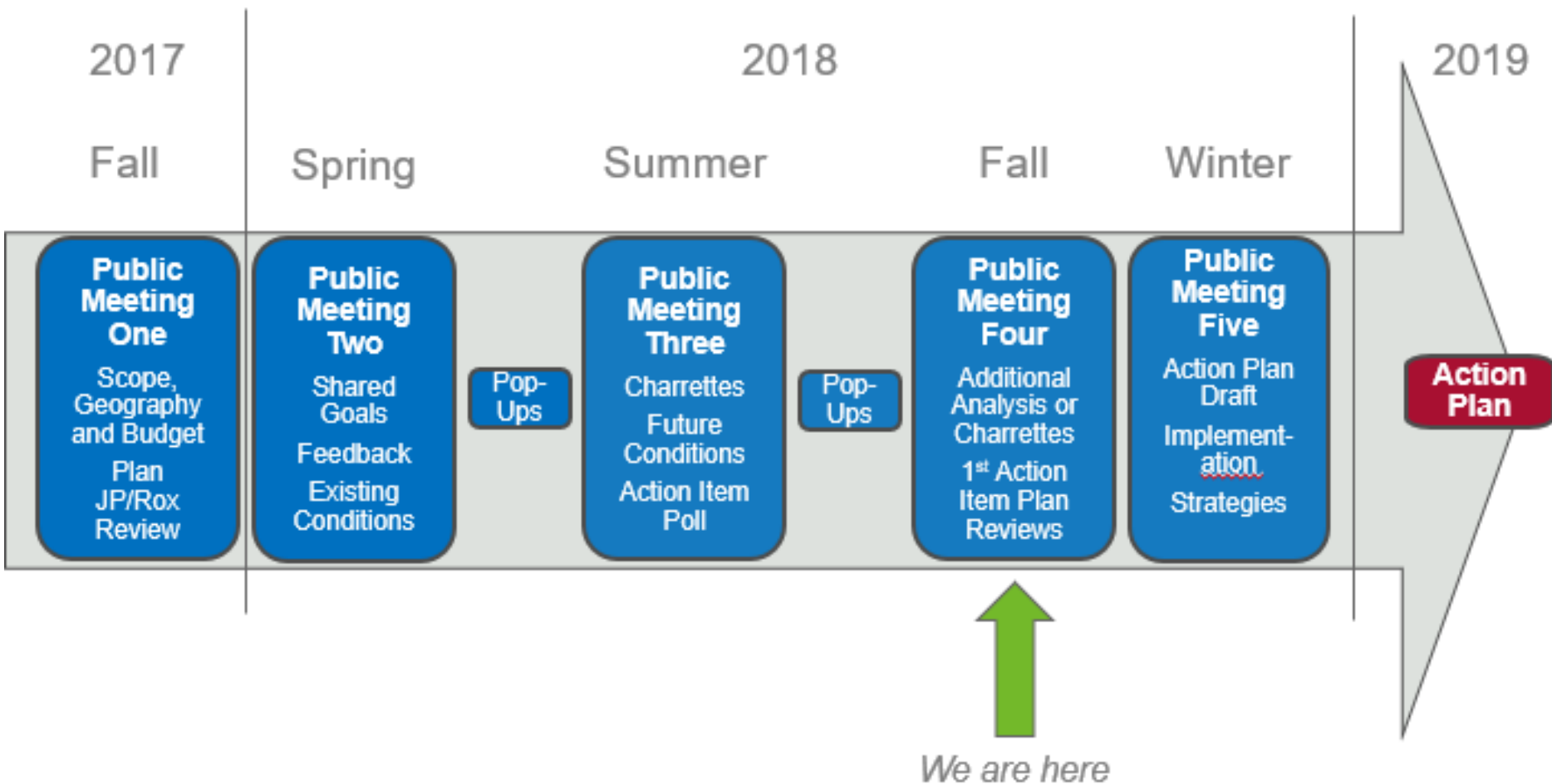
State Coordination

MBTA

MassDOT

DCR

Action Plan Timeline



Goals for Tonight

Presentation

- Community Prioritization of Action Items
- Progress on Priority Projects: Egleston Square

Workshops

- Egleston Square
- Forest Hills St./Washington St./Montebello Ave.
- Green St (at Washington St.)

Identified during PLAN: JP/Rox

Value

- Equity and Affordability

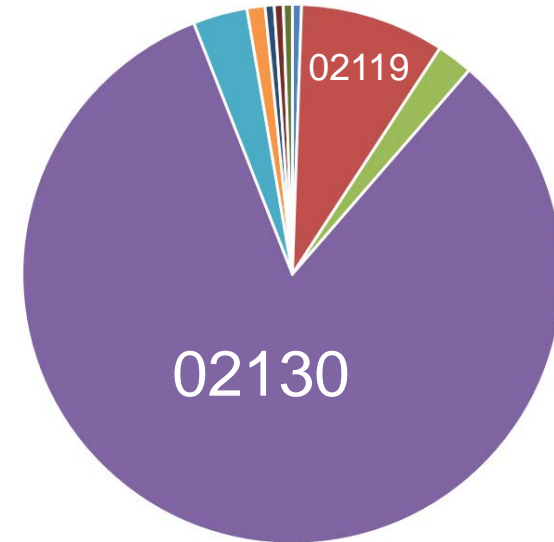
Priority Projects

- Egleston Square/Columbus Ave. Improvements
- Bus Delay and Stop Improvements
- Southwest Corridor Connectivity and Crossings Improvements
- Public Realm Improvements (Washington St.)

Outreach: Action Item Prioritization

- Public Meeting 3: Action Item Poll
 - 238 dots placed, 75 comments
- Pop-Ups (Round 2): 3 Locations
 - 277 dots placed
- Online Survey
 - 294 respondents, 710 comments

Survey Zip Codes





Action Item Feedback Results

Priorities we heard

Project	Overall Rank
Columbus Avenue Bus/Bike Lane	1
Pedestrian Crossing Improvements Throughout Neighborhood	2
Southwest Corridor Improvements	3
Washington Street a.m. Bus Lane/Commercial Delivery into Egleston Square	4
Amory Street Traffic Calming	4
Green Street Activation	6

Demonstration/Pilot Projects

Project	Overall Rank
Columbus Avenue Bus/Bike Lane	1
Washington Street a.m. Bus Lane/Commercial Delivery into Egleston Square	4
Egleston Square Tactical Urbanism	7



Short-term (0-5 Years)

Project	Overall Rank
Transit Improvements <ul style="list-style-type: none"> • Bus Service Improvements • Mobility microHUBs 	*
Egleston Square Intersection Improvements	*
Columbus Avenue Bus/Bike Lane	1
Pedestrian Crossing Improvements Throughout Neighborhood	2
Southwest Corridor Improvements	3
Open Green Street	6
Atherton Street Bike Connection/Traffic Calming	9/*
TDM Survey and Assessment	13
School Street Safety Improvements – paint and signage	14/*
TNC Pickup / Dropoff in Egleston Square	15

* Prioritized in PLAN: JP/Rox

Long-term (5 + years)

Project	Overall Rank
Amory Street Traffic Calming	4
Green Street Activation	6
Washington Street Bike Accommodations / Curb Use Management	8/20
Washington Street/Forest Hills/Montebello Intersection	10
Centre St/Columbus Ave/Ritchie St at Jackson Sq	12
School Street Safety Improvements - Capital	14/*
Boylston Street Contraflow	15/*
Bike Facilities on Williams Street	21/*
Bray Street Slip Lane Removal	22

* Prioritized in PLAN: JP/Rox

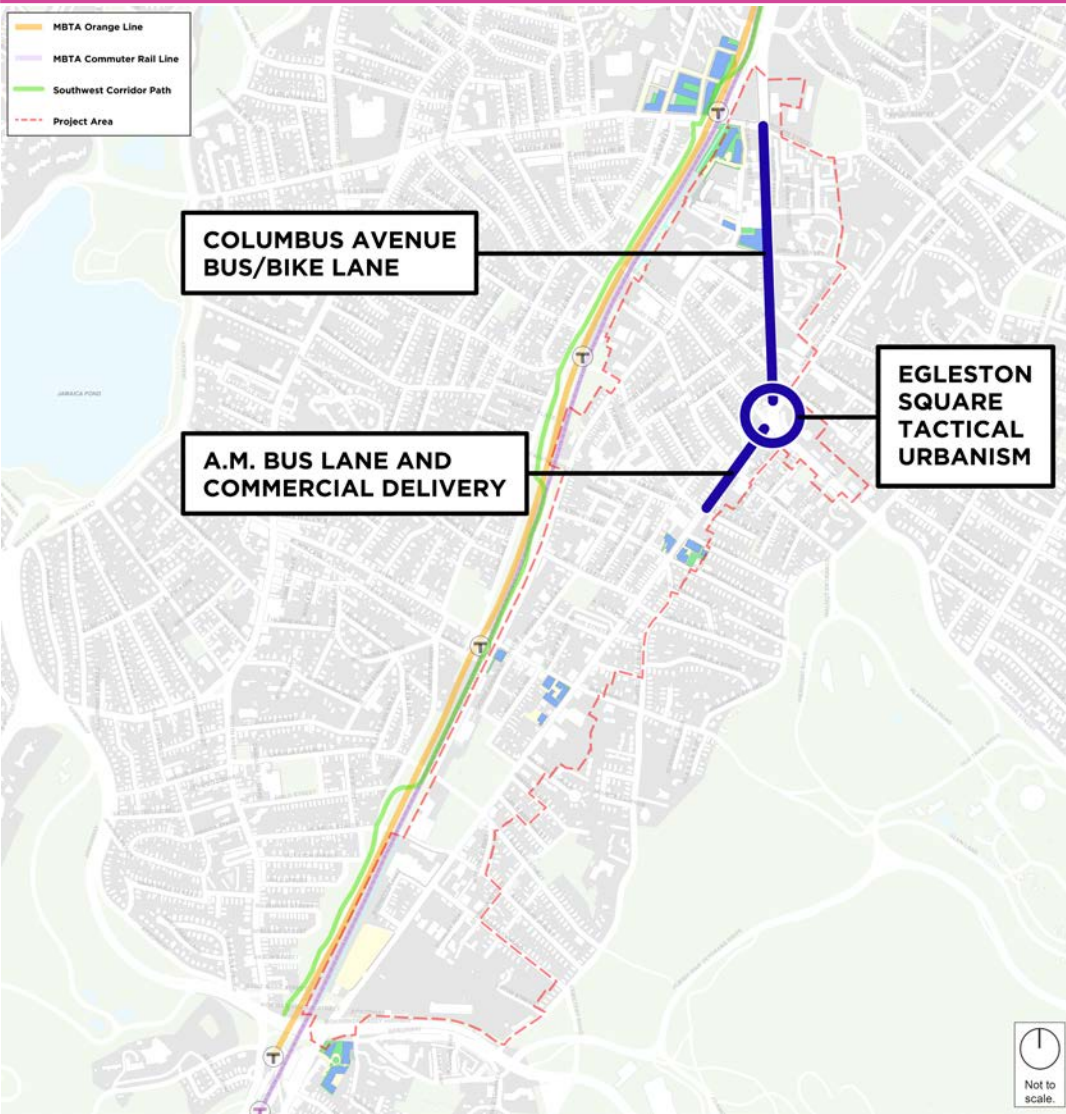


Boston
Transportation
Department



Action Items

Pilot/Demonstration Projects



Washington Street Pilot

RANK: 4/8



Transit



3.1 WASHINGTON STREET AM PEAK BUS LANE INTO EGLESTON SQUARE (PILOT)

- Estimated Cost: Low
- Estimated Duration: 3 months design + quarter construction season

• Shared Goals



Congestion and overall friction on Washington Street often leads to delays on buses traveling between Dudley Square and Forest Hills – the 42 bus has a 60% On-Time Performance rate, which frequently drops to 30% (as of 2017). Vehicles pulling in and out of parking spaces during peak commuting hours also adds to the friction on this section of Washington Street. A morning peak bus lane could be piloted along the most congested section of the street – approximately School Street to Eggleston Square on Washington Street. This could be supplemented with the creation of a commercial loading zone designation before opening the parking for general public use. This action item would be developed with coordination from local businesses and Eggleston Square Main Streets. Curb use changes could be coordinated with Action Item 4.2 Eggleston Square Parking Meters.

The congestion is worse school st. All along west side in a rush meter

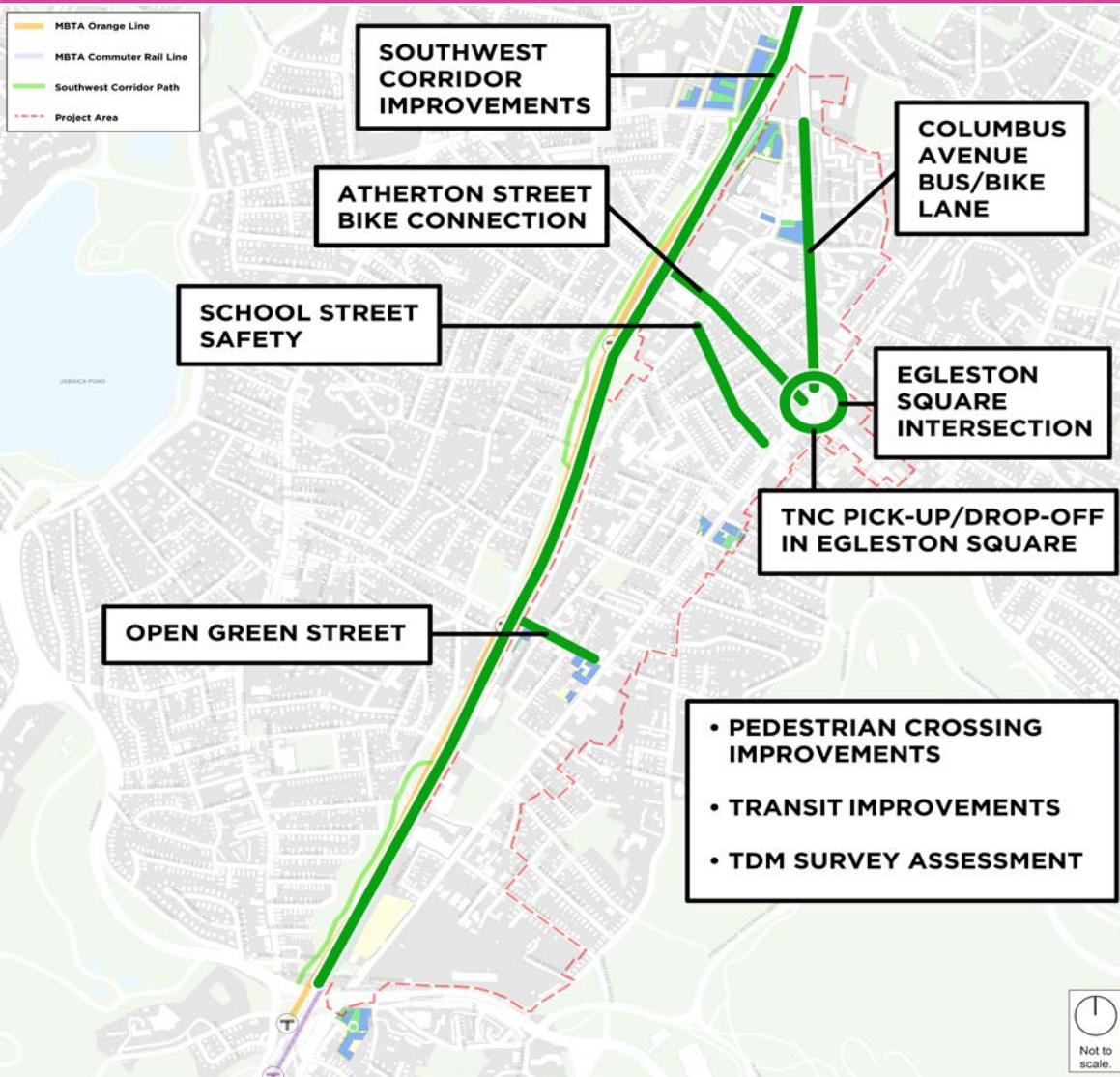
Handwritten note on a purple sticky note.

Handwritten note on a purple sticky note.



Boston Transportation Department

Short-Term Projects (0 – 5 Years)



Transit Improvements

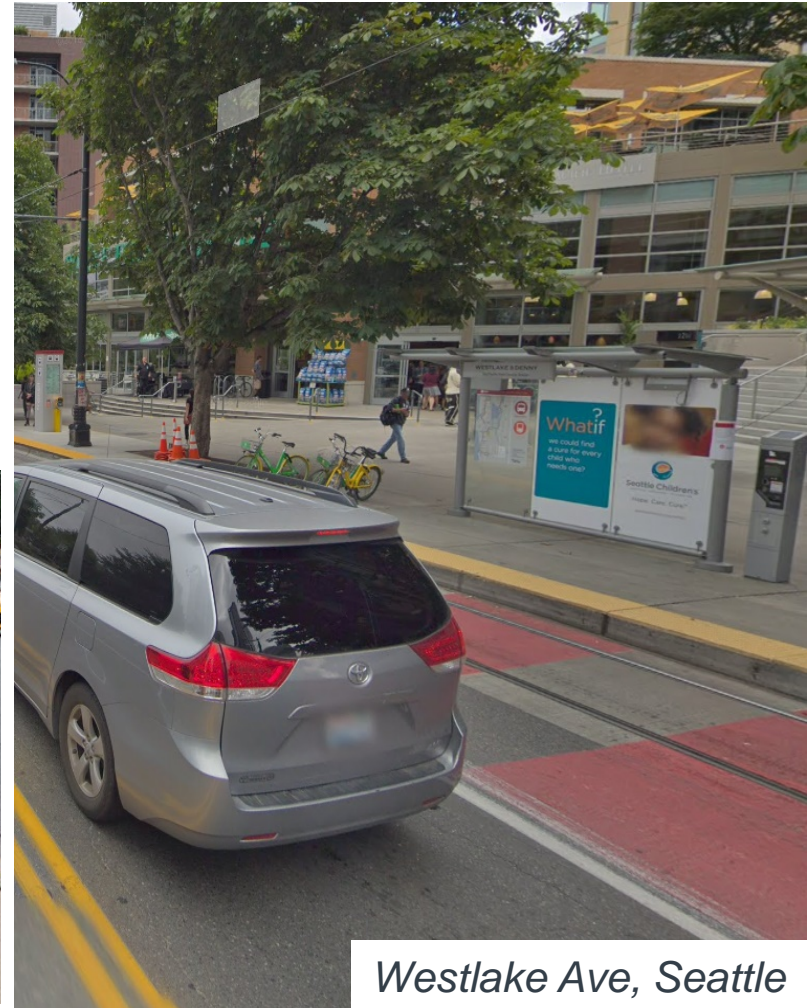
- Could include:
 - Street furniture at bus stops
 - Creating bus bulbs / floating bus stops
 - Balancing and consolidating bus stops



*Washington St. at
Melnea Cass Blvd.*



Commercial Ave, Chicago

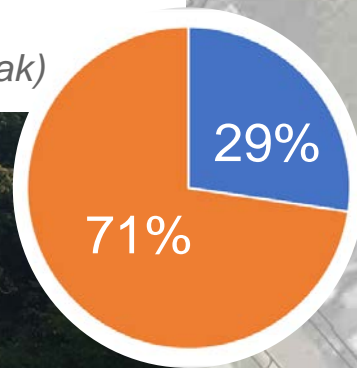


Westlake Ave, Seattle

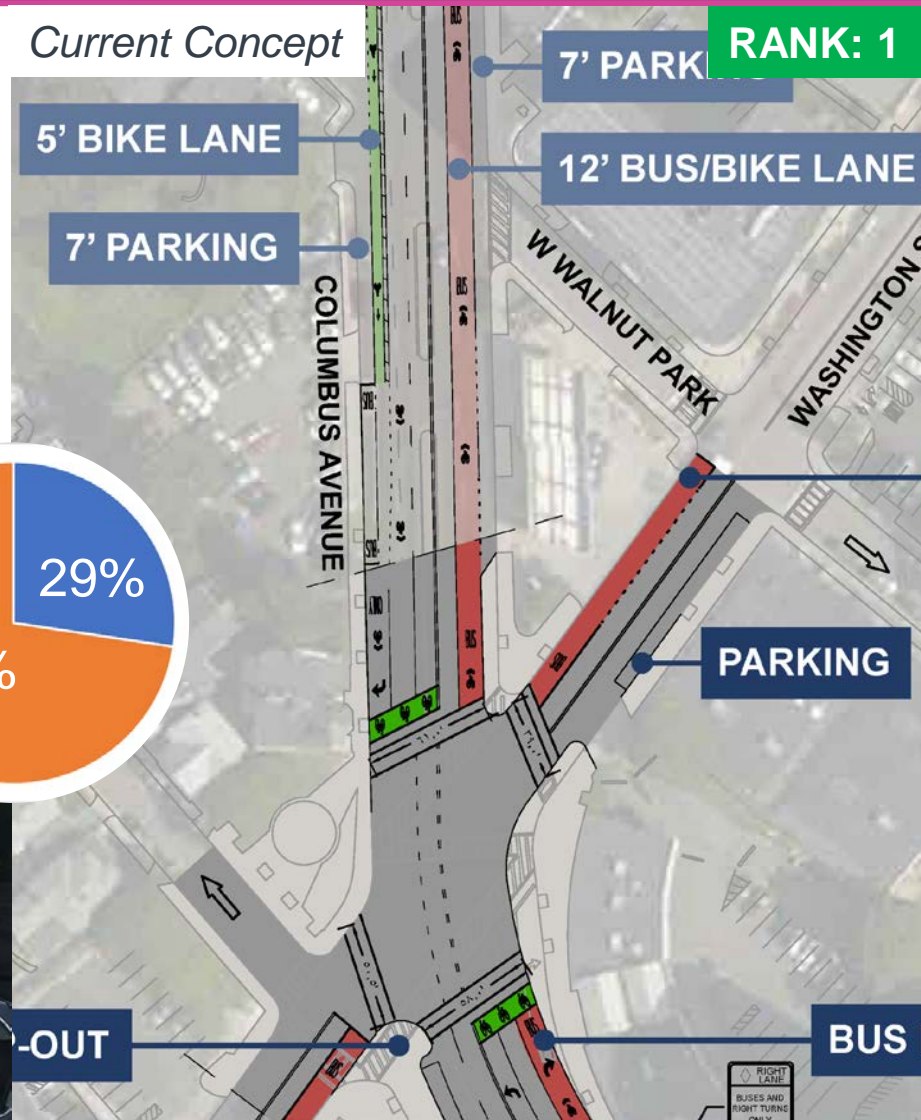
Columbus Avenue Corridor

- Bus Stop Improvements
- Bus Priority (Northbound)
- Protected Bike Facilities (Southbound)

Percentage of people in busses vs. cars (a.m. peak)



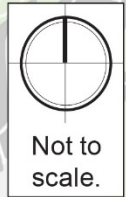
Current Concept



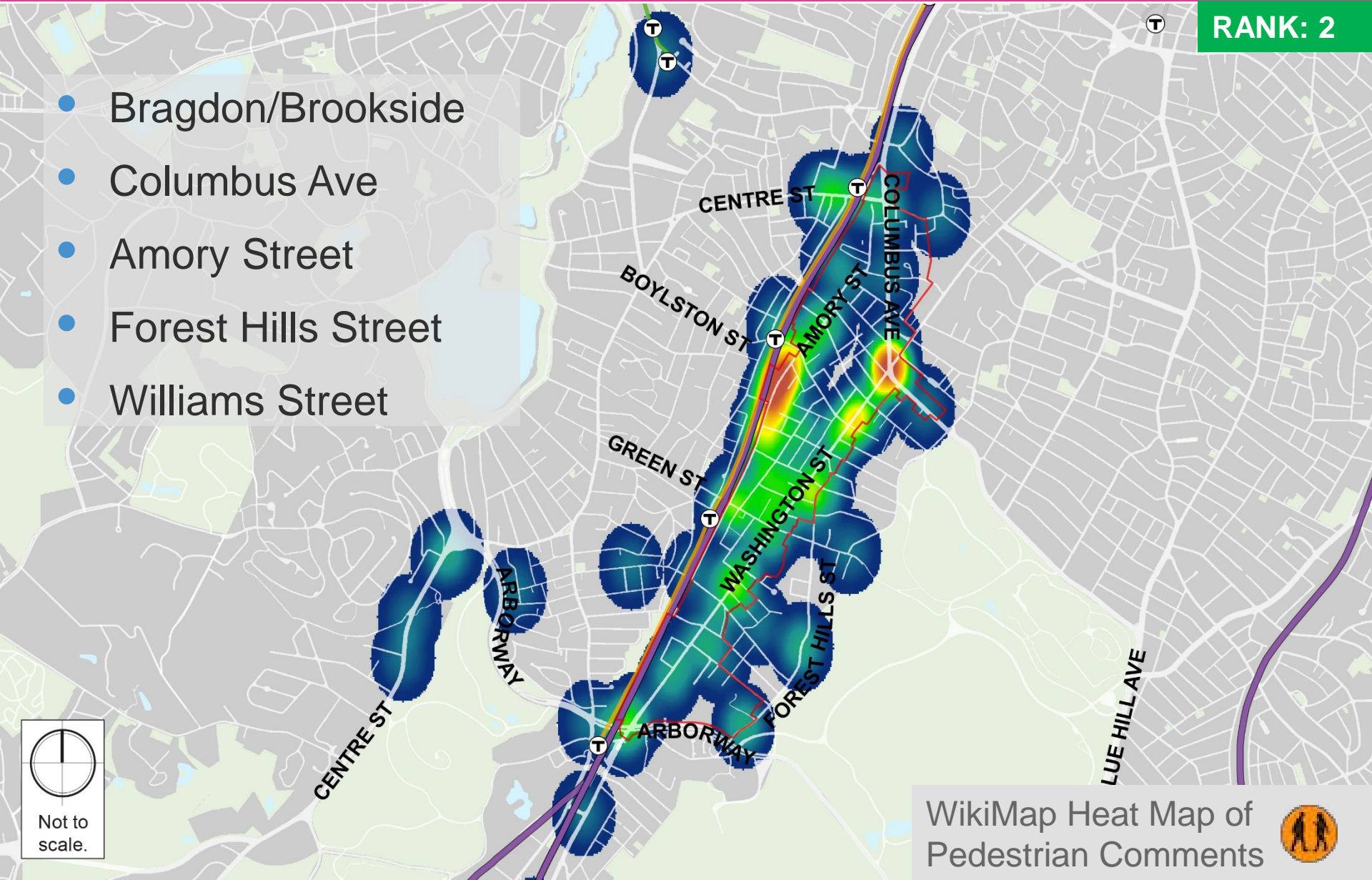
JP/Rox Crossing Improvements

RANK: 2

- Bragdon/Brookside
- Columbus Ave
- Amory Street
- Forest Hills Street
- Williams Street



WikiMap Heat Map of
Pedestrian Comments



Southwest Corridor Improvements

RANK: 3/*

- Ramp widening and crossing improvements



Green Street Activation: Open Green Street

Public Space Enhancement

- "More gathering places for young people"
- "Dog park; community gardens; pocket parks/plaza. Inclusivity/affordability"
- "Enhance + grow Franklin Park; better maintenance"
- "More inviting Green Street"
- "Designated off-street parking"

PLAN: JP/ROX

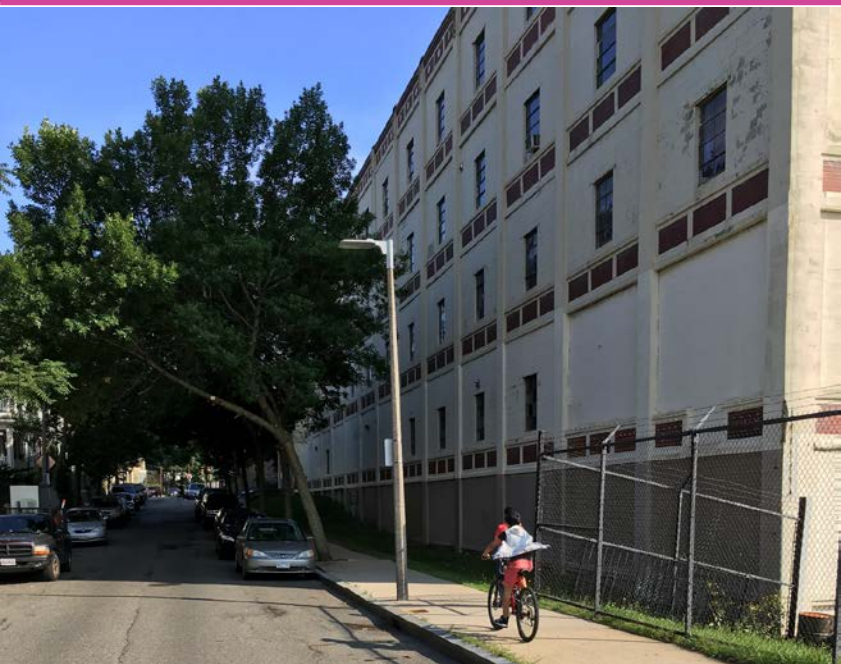
RANK: 6



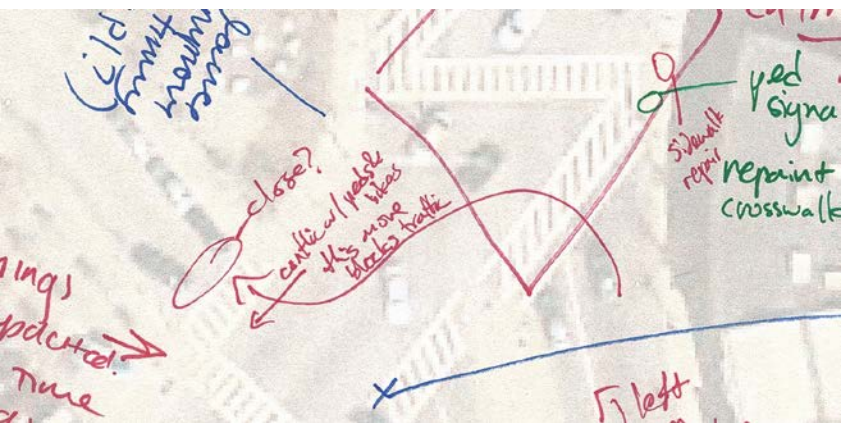
Open Canal Street 2017

Atherton Street Connection

RANK: 9/*



- Potential in conjunction with Egleston Square intersection
- East/West connection



Concord Ave. at Fern St., Cambridge

School Street Safety Improvements

RANK: 14/*

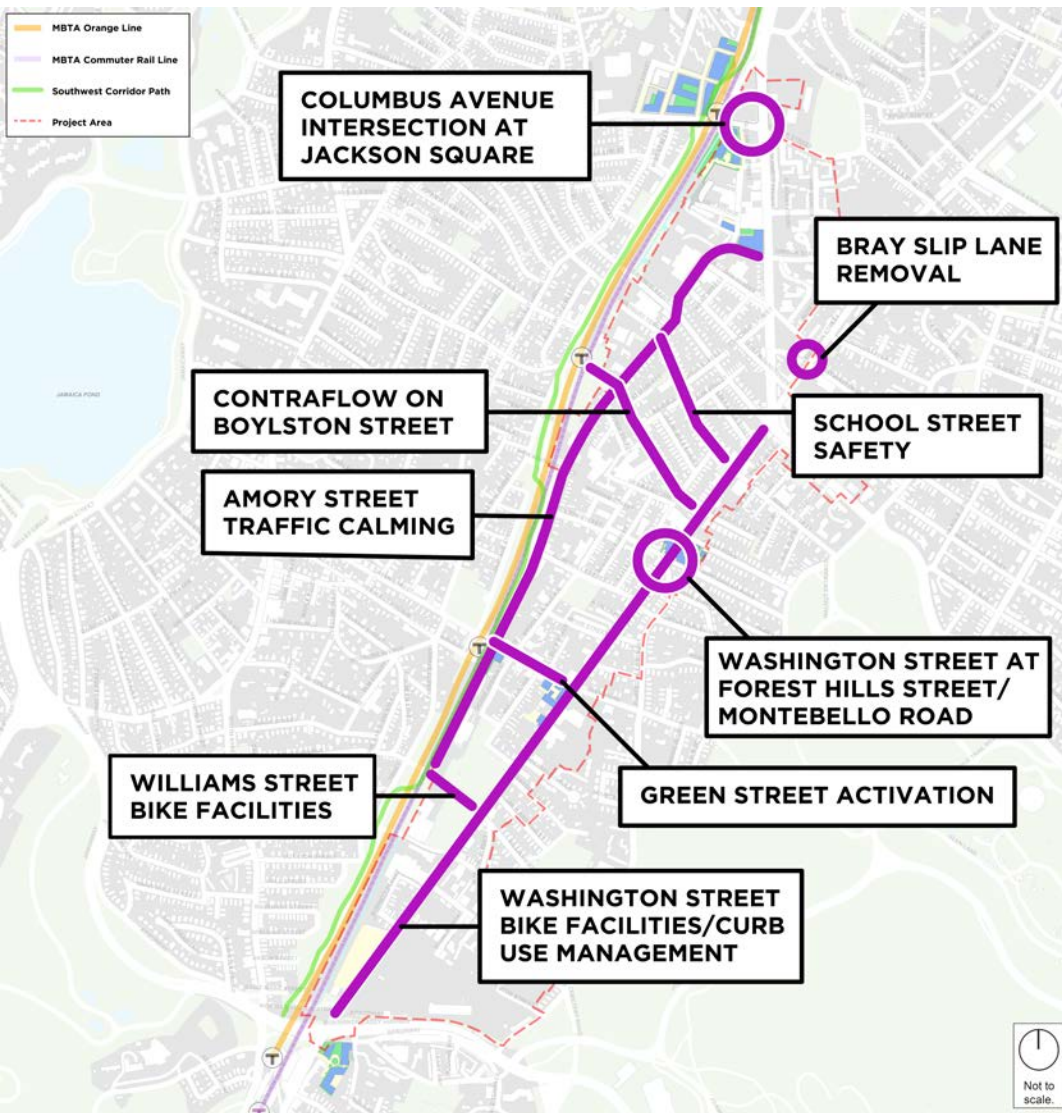
Short-Term: Paint and Signage
Long-Term: Capital Project

*“Raised crossings are a must on this street ... Measures to keep people from feeling like they can gun it through the light would really help..”
- Action Item Poll*



Beethoven Street at Washington Street

Long-Term Projects (5 + Years)



Traffic Calming & Sidewalks on Amory Street

RANK: 4

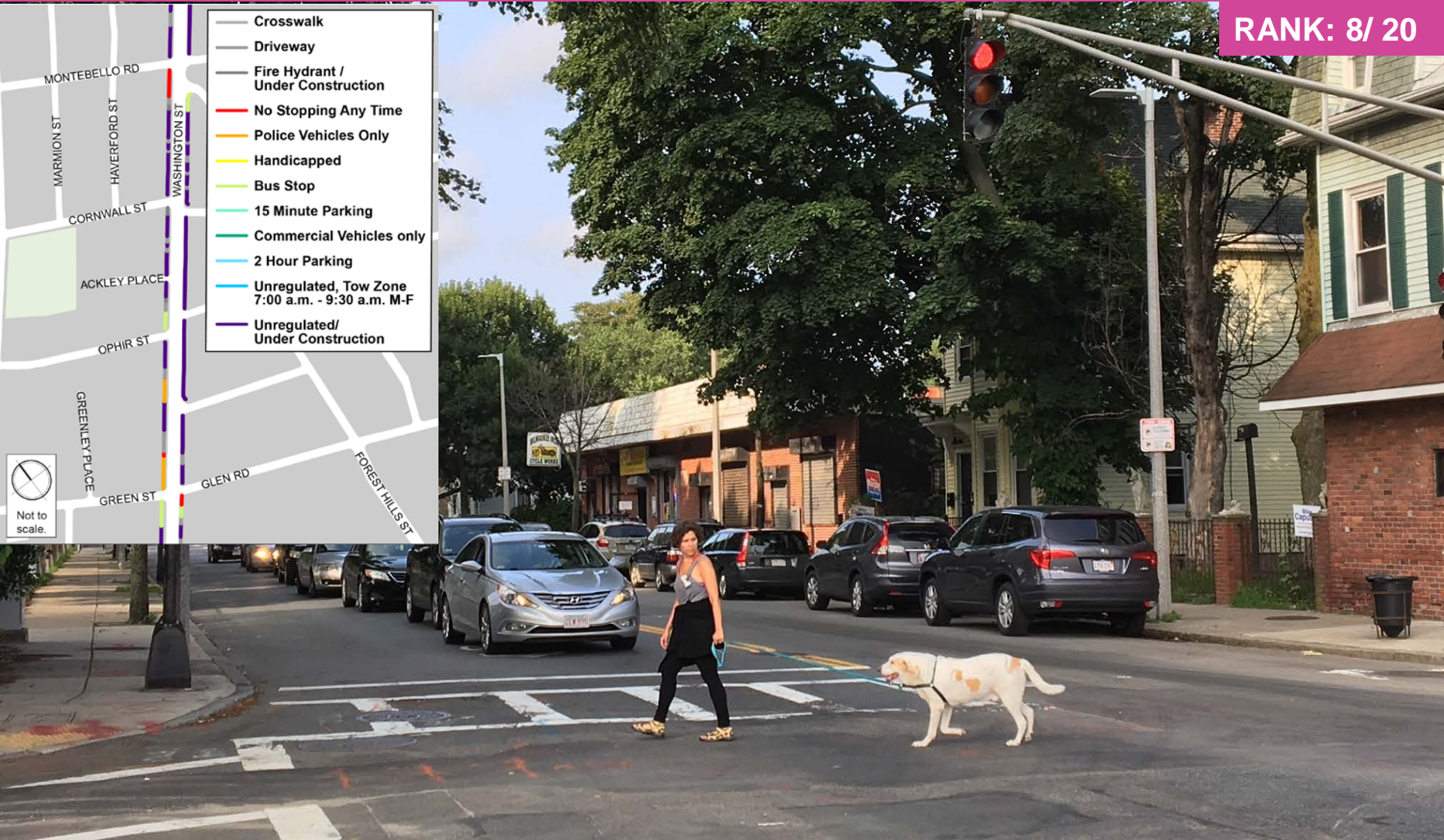


Columbia St., Cambridge



Washington Street Bike Accommodations/ Curb Use Management

RANK: 8/ 20



Green Street Activation: Gateways and Traffic Calming

Green Street

PLAN: JP/ROX

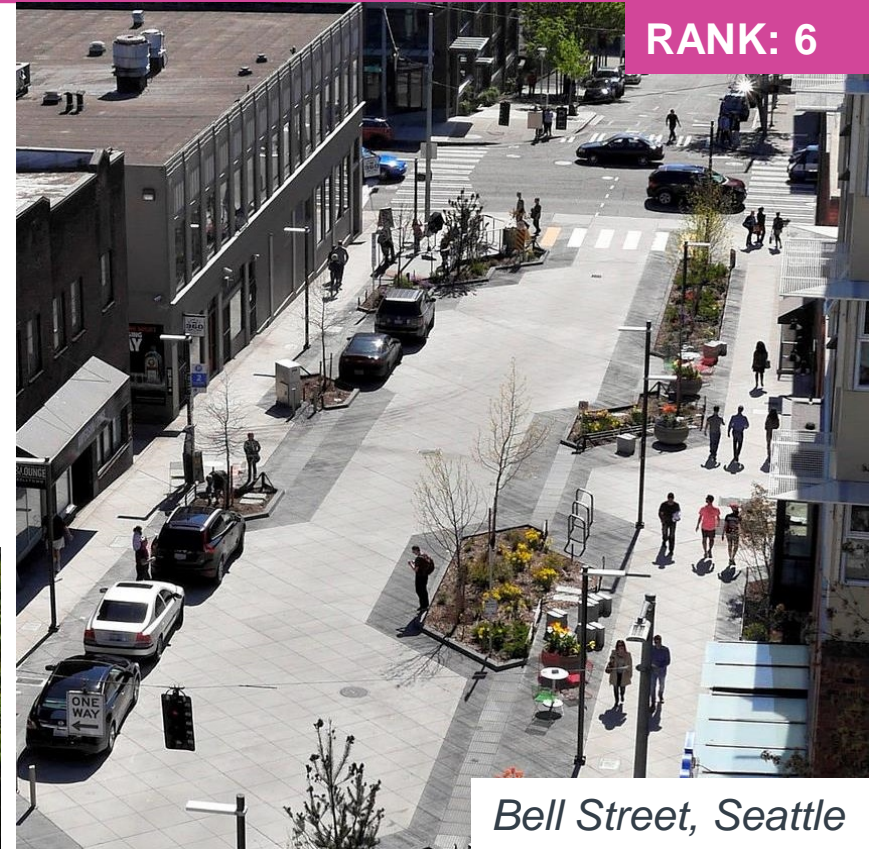
Character: Neighborhood service district.

Recommendations:

- Concentrate active retail along Green Street between Washington Street and Amory Street. Extend active retail uses beyond the corners and onto Washington Street and Amory Street.
- Create active semipublic spaces for outdoor business activity (displays, seating).
- Improve street amenities and cleanliness on Green Street because of its significance as a neighborhood connector between Amory Street and Washington Street, as well as a connector between the Southwest Corridor and Franklin Park through design elements such as wayfinding signage, sidewalk plaques, kiosks, etc.
- Widen sidewalks and implement traffic calming strategies on Green Street.



Centre Street, JP



RANK: 6

Bell Street, Seattle

“A shared street as public space would be really great here. Could Green Street be kind of like downtown crossing? This is a heavy pedestrian area.” - Action Item Poll

Washington & Forest Hills Street & Montebello Road

Public Realm

PLAN: JP/ROX

RANK: 10

Recommendations include:

- Improve and enliven existing public and private active spaces including:
 1. Stonehenge Park
 2. Peace Garden (corner of School and Washington Streets)
 3. Corner of Montebello Road and Forest Hills Street
- Enhance streetscapes with wider sidewalks, landscaping, lighting, and street furniture.



"Crosswalk signal takes a long time to change and it's not clear where cars are coming from. Cars frequently run red lights or block the box too." - Wikimap Comment

Contraflow Boylston Street Connection

RANK: 15*

- Direct link to MBTA Stony Brook
- Potential for Sharrows and a contraflow bicycle lane on Boylston Street
- Current wrong-way riding (uphill)
- Would require parking removal
- Mirrors Atherton Street connection





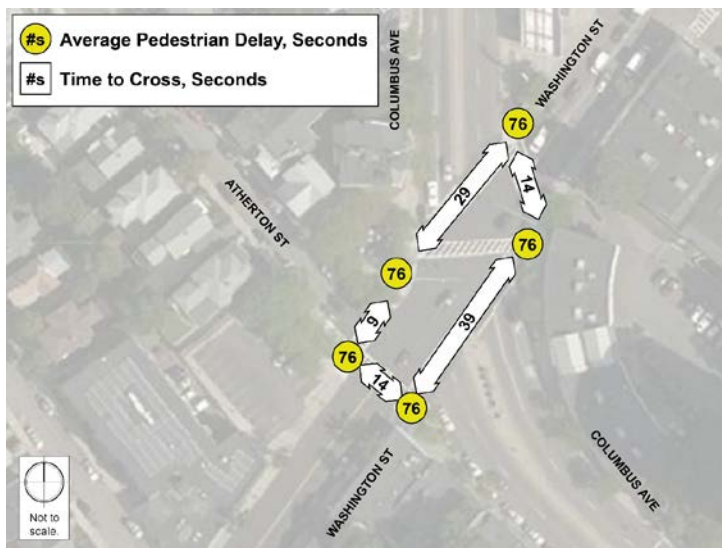
PRIORITY PROJECTS

Egleston Square Concept

Design Goals

Improve Safety and Connections

- Improve safety
 - Crossings
 - Sidewalks
 - Sight lines
- Improve connections across the intersection



Design Goals

Facilitating Corridor Improvements

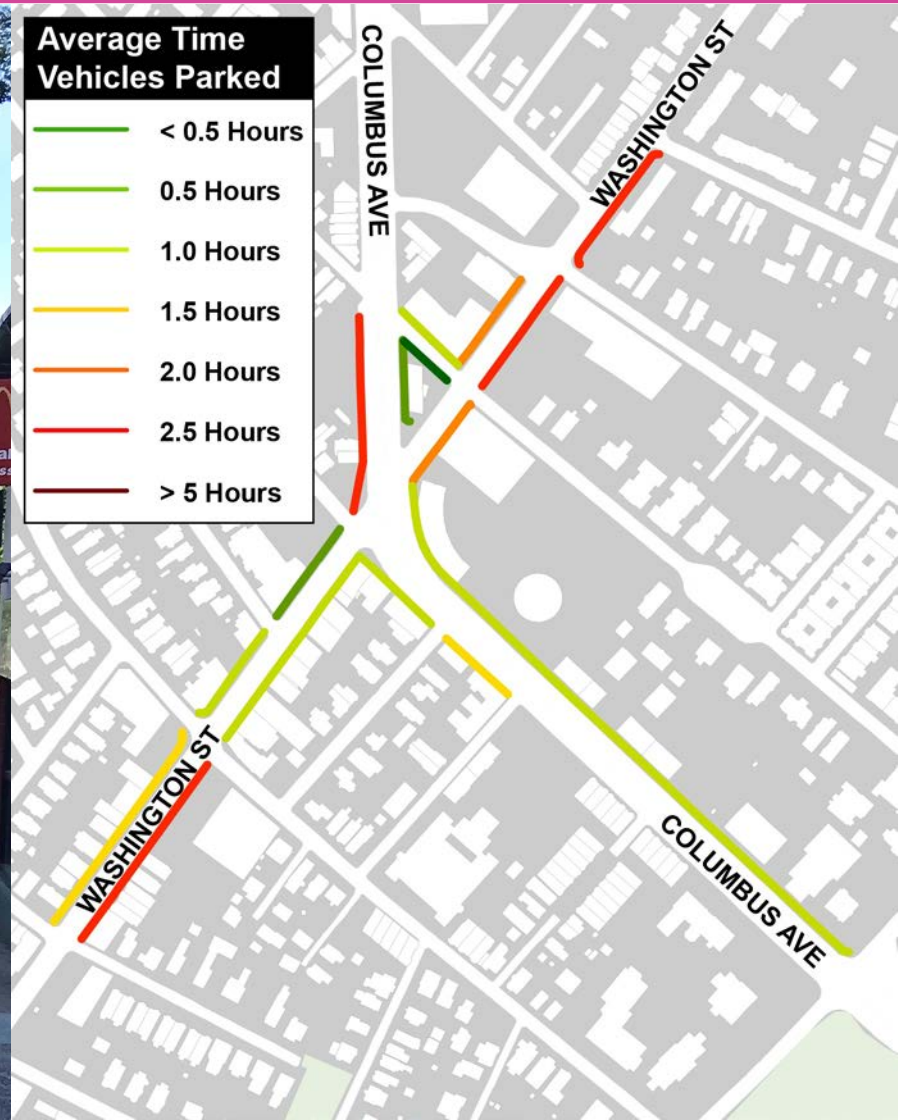
- Washington Street commercial delivery/ a.m. bus pilot
- Columbus Avenue NB bus/bike lane
- Atherton Street traffic calming and bike connection



Everett Bus/Bike Lane

Design Goals

Keep Traffic Moving



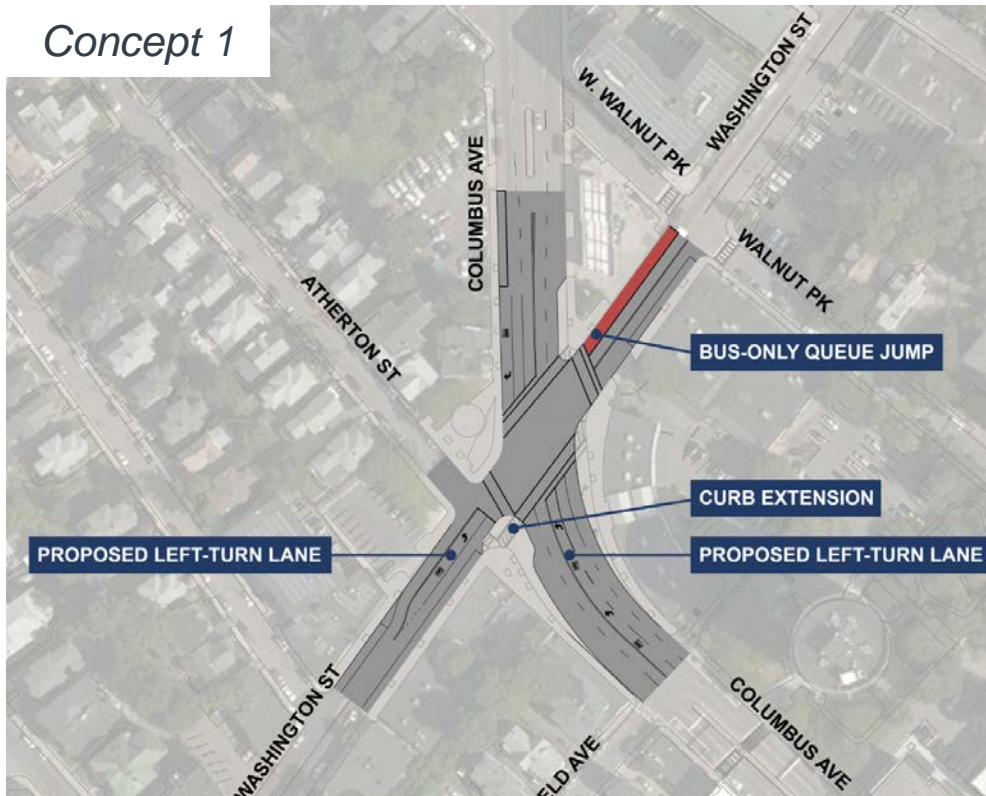
Design Goals

Reduce Cut-through Traffic

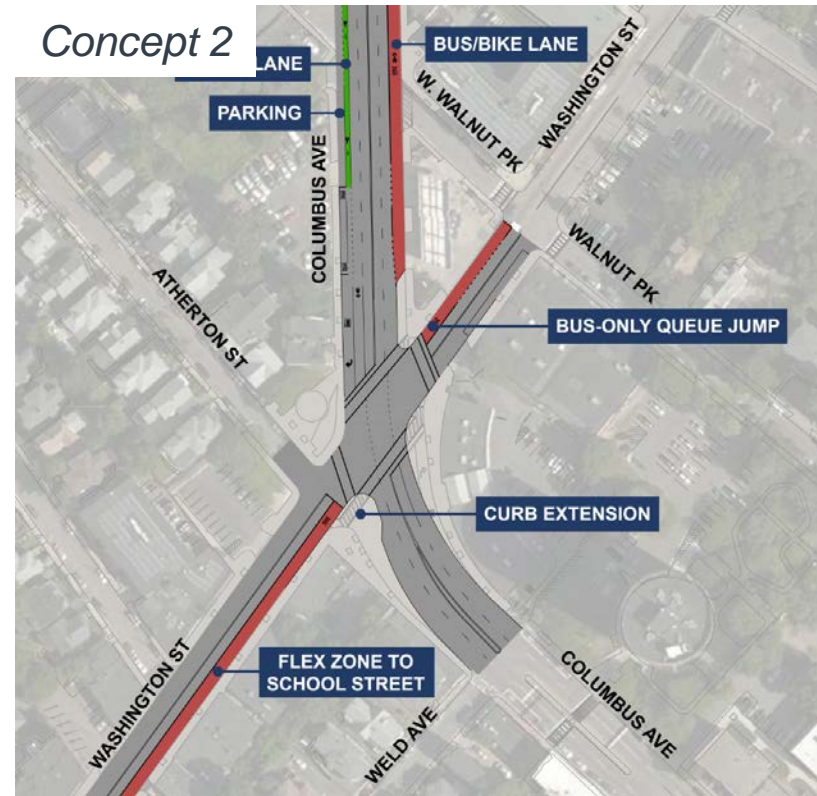


Early Concepts: Egleston Square

Concept 1



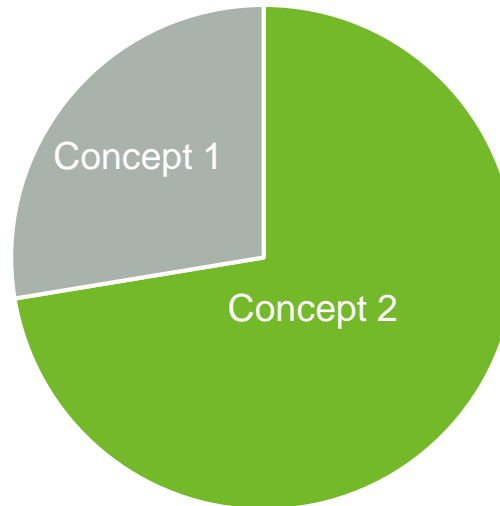
Concept 2



Supplemental Online Feedback: Egleston Square

- Suggested by residents at the last Public Meeting
- Evaluate preference for turning movements

Which concept do you prefer?



JP/Rox Transportation Action Plan: Egleston Square Improvements - Concept Feedback

Use this form to learn about the design concepts for Egleston Square, and provide feedback to the project team.

* Required

Introduction

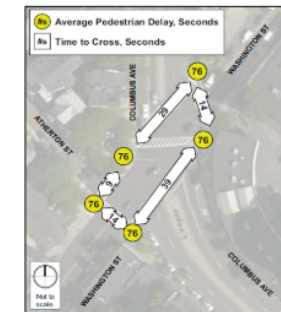
The JP/Rox Transportation Action Plan is a year-long process to develop short- and long-term transportation improvements in the Washington Street/Columbus Avenue Corridor between Forest Hills, Egleston Square, and Jackson Square.

The City has prioritized looking at Egleston Square, the intersection of Washington Street and Columbus Avenue, which is so wide that is a challenge to cross no matter what mode you're using to get to a destination. Based on community feedback, traffic counts and planning and engineering judgment, the following initial concepts have been developed to help design a better place to be and travel through.

We will use your feedback, collected through this survey, the recent public meeting, and pop up sessions around the neighborhood, to move the concepts forward including design for bus operations, bicycle accommodations, and programming of public space.

Below is a map showing current conditions in Egleston Square, including how many seconds on average a pedestrian has to wait to cross each street, and how long it takes to cross the street.

How long does it take to cross?



Egleston Square Today



Current Concept



Tonight: Envisioning the Public Realm

- Public Realm: space accessible to all members of the community
- What words would you use to describe the public space today?



How Might the Space Be Used in the Future?



COMFORT



**COMMERCIAL
USE**



PUBLIC ART



**BIKE/TRANSIT
SUPPORT**



PLAY



**COMMUNITY
USE**

Creating a Desirable Outdoor Space

Bedford Street at Broadway, Brooklyn



Bliss Plaza, Queens



Tontine Crescent



Underground Ink Park



Orienting the Street to Improve Safety

Quincy Center



Before

Central Square, East Boston



Before



After



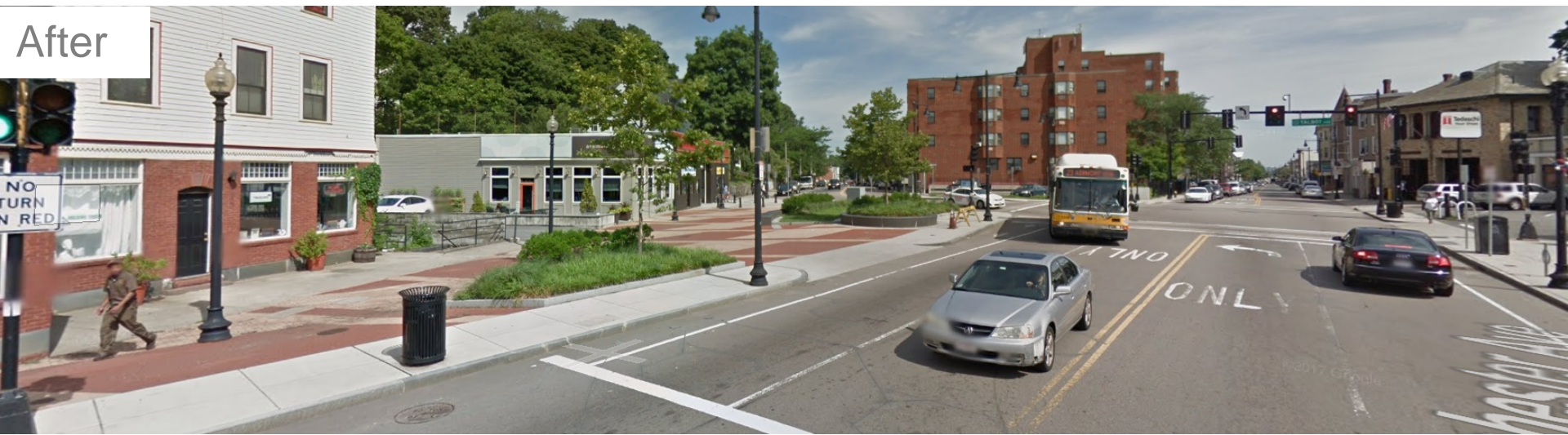
After

Peabody Square, Dorchester

Before



After



Lafayette Square, Cambridge

Before



After



Breakout Groups: Choose Two

20-minute sessions

Egleston Square



Envisioning a space you want to spend time in

Green Street



Creating a safer, more inviting street

Washington at Forest Hills St./Montebello Rd.



Bus Stops and Street Furniture with limited space

Goals for Next Time (Subject to Change)

Presentation – Draft Action Plan

Discussion

Open House

Search For: JP/Rox Transportation

The screenshot shows the City of Boston website for the JP/Rox Transportation Action Plan. At the top, it features the City of Boston logo and Mayor Martin J. Walsh's name. A navigation bar includes links for 'PAY AND APPLY', 'PUBLIC NOTICES', 'FEEDBACK', and 'TRANSLATE'. A dark banner below the navigation bar contains the text 'WICKED FREE WI-FI EXPERIENCING TECH ISSUES / We are looking into a fix and apologize for the inconvenience.' The main content area has a breadcrumb trail: 'HOME > DEPARTMENTS > TRANSPORTATION > JP/ROX TRANSPORTATION ACTION PLAN'. The title 'JP/ROX TRANSPORTATION ACTION PLAN' is prominently displayed. Below the title, it states 'We're making short- and long-term improvements in Columbus Avenue Corridor.' To the right, there is a contact section titled 'Still have questions? Contact:' with the following information: 'TRANSPORTATION', phone number '617-635-4680', email 'BTD@BOSTON.COV', and address '1 CITY HALL SQUARE, ROOM 721, BOSTON, MA 02201-2026, UNITED STATES'. At the bottom right, there is a 'GET UPDATES' section with the text 'Sign up for project updates.' and a field for 'YOUR EMAIL ADDRESS'. The footer includes links for 'DOCUMENTS' and 'ABOUT GO BOSTON 2030'.

#JPRoxTranspo