

# Parkman Plaza, Boston Common

## Site Programming and Preliminary Design Study

---

### Preferred Design Option

### June 2014

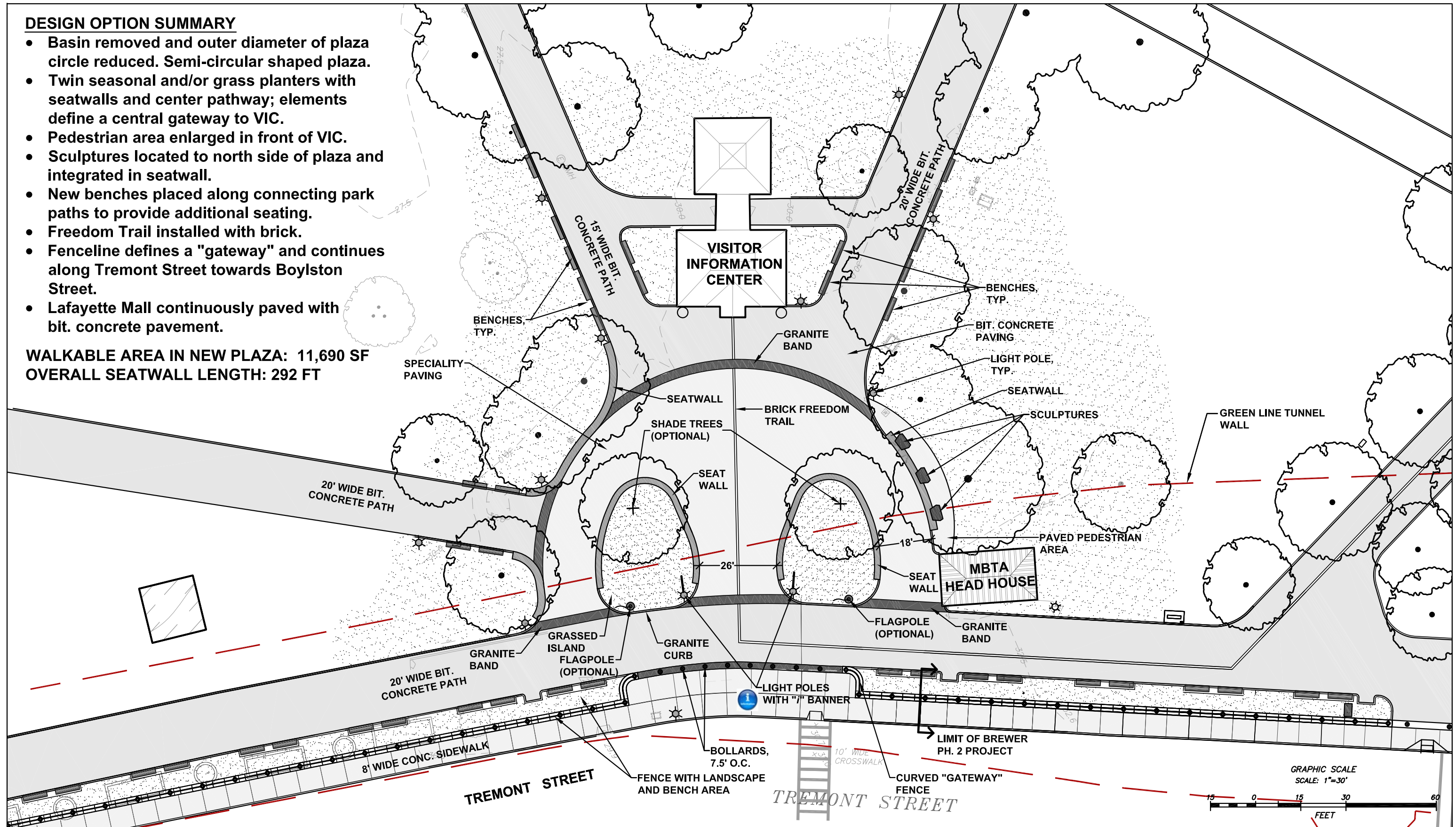


Pressley Associates  
Landscape Architects  
136 Lewis Wharf  
Boston, MA 02110  
Tel: 617-725-0011  
Fax: 617-725-2877  
[www.pressleyinc.com](http://www.pressleyinc.com)

**DESIGN OPTION SUMMARY**

- Basin removed and outer diameter of plaza circle reduced. Semi-circular shaped plaza.
- Twin seasonal and/or grass planters with seatwalls and center pathway; elements define a central gateway to VIC.
- Pedestrian area enlarged in front of VIC.
- Sculptures located to north side of plaza and integrated in seatwall.
- New benches placed along connecting park paths to provide additional seating.
- Freedom Trail installed with brick.
- Fenceline defines a "gateway" and continues along Tremont Street towards Boylston Street.
- Lafayette Mall continuously paved with bit. concrete pavement.

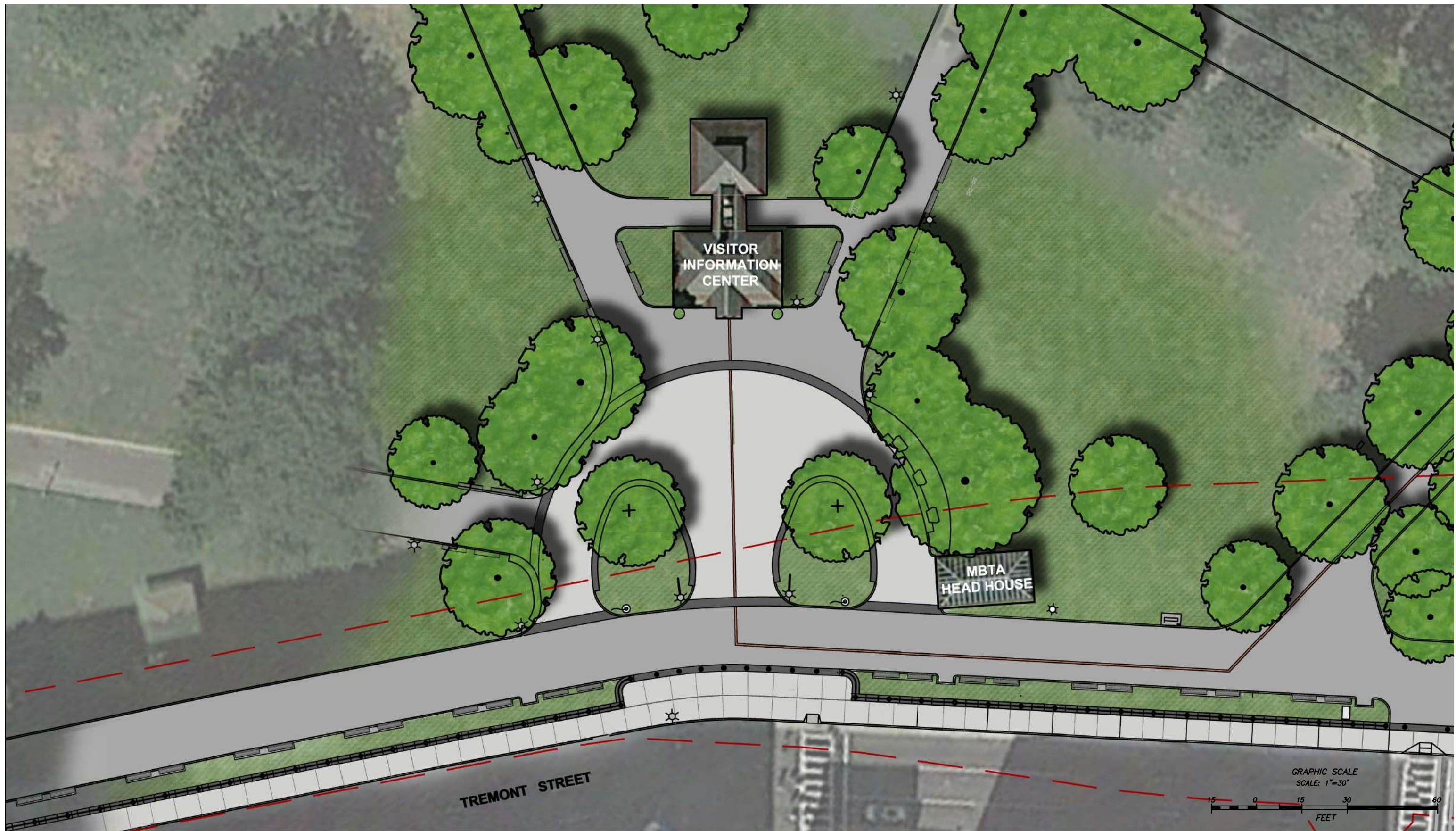
**WALKABLE AREA IN NEW PLAZA: 11,690 SF**  
**OVERALL SEATWALL LENGTH: 292 FT**



**Parkman Plaza, Boston Common - Site Programming and Preliminary Design Study**

Preferred Design Option - Plan View

Prepared by Pressley Associates, Inc., Boston, MA for Boston Parks and Recreation Department



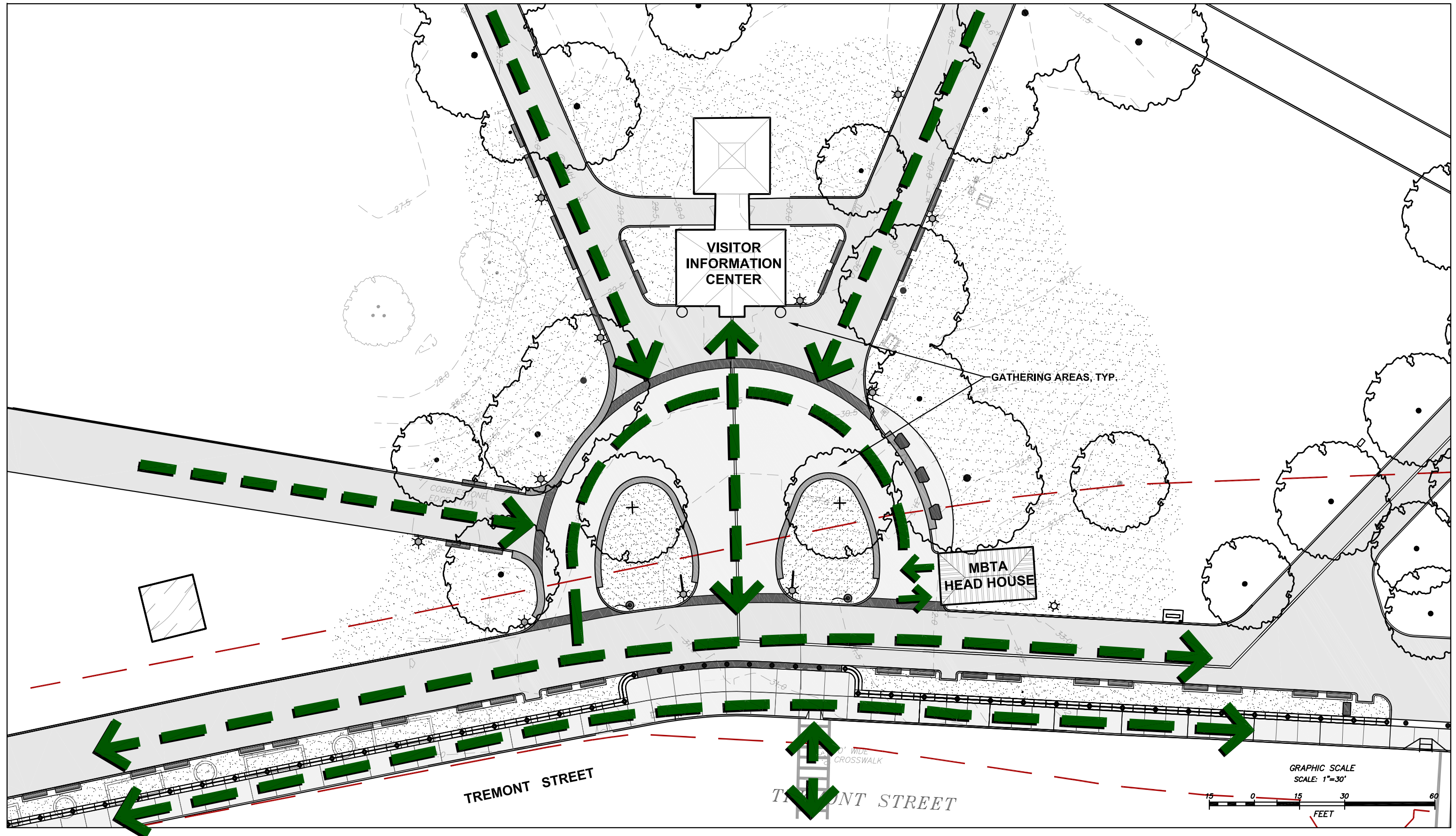
## Parkman Plaza, Boston Common - Site Programming and Preliminary Design Study

Preferred Design Option - Illustrative Plan View

Prepared by Pressley Associates, Inc., Boston, MA for Boston Parks and Recreation Department

L-2

June 2014



# Parkman Plaza, Boston Common - Site Programming and Preliminary Design Study

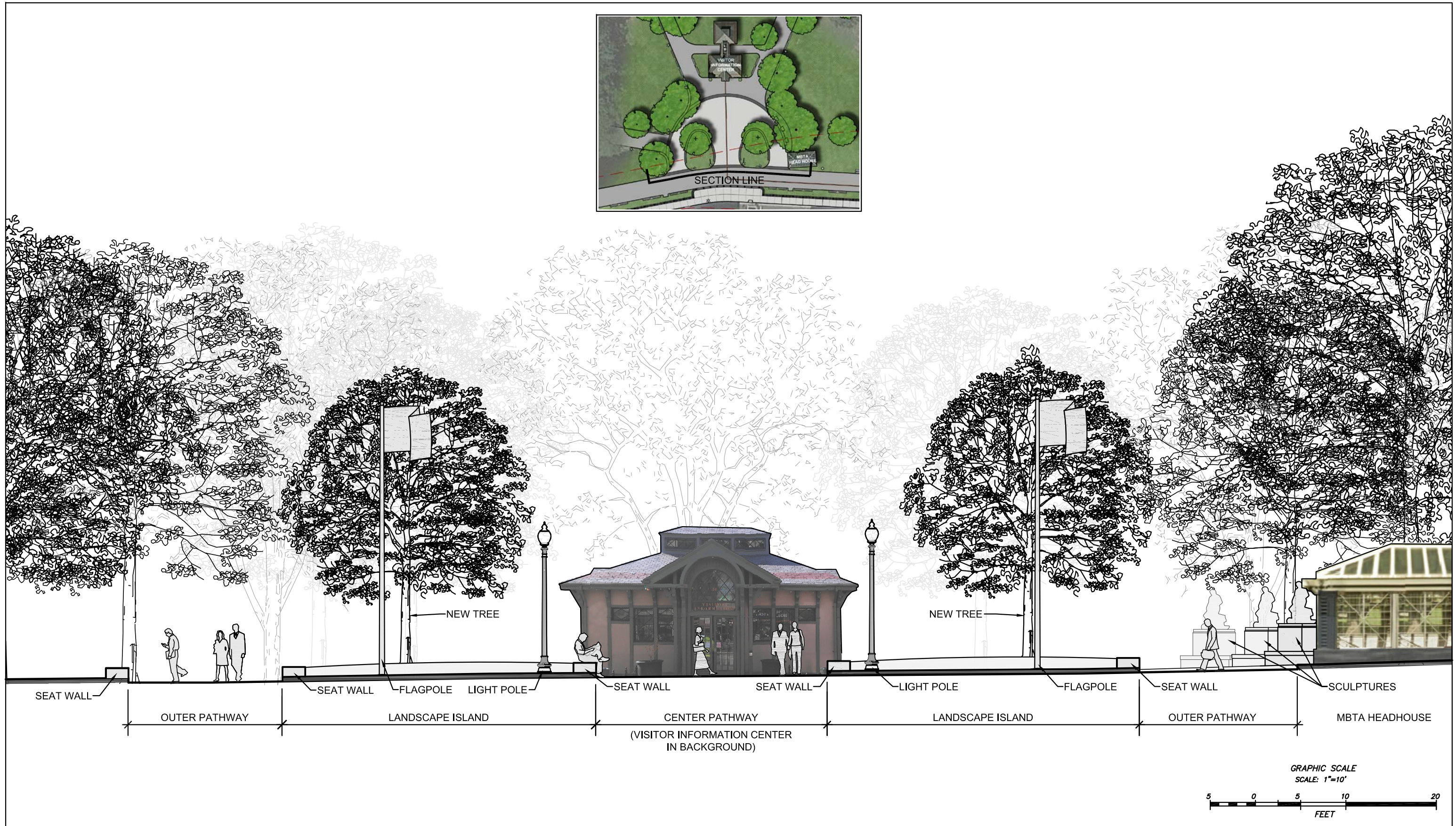
Preferred Design Option - Site Pedestrian Movement

Prepared by Pressley Associates, Inc., Boston, MA for Boston Parks and Recreation Department



## Parkman Plaza, Boston Common - Site Programming and Preliminary Design Study

Preferred Design Option - Relationship to Brewer Fountain Plaza  
 Prepared by Pressley Associates, Inc., Boston, MA for Boston Parks and Recreation Department



# Parkman Plaza, Boston Common - Site Programming and Preliminary Design Study

Preferred Design Option - Site Section

Prepared by Pressley Associates, Inc., Boston, MA for Boston Parks and Recreation Department



## Parkman Plaza, Boston Common - Site Programming and Preliminary Design Study

Preferred Design Option - Site Rendering

Prepared by Pressley Associates, Inc., Boston, MA for Boston Parks and Recreation Department