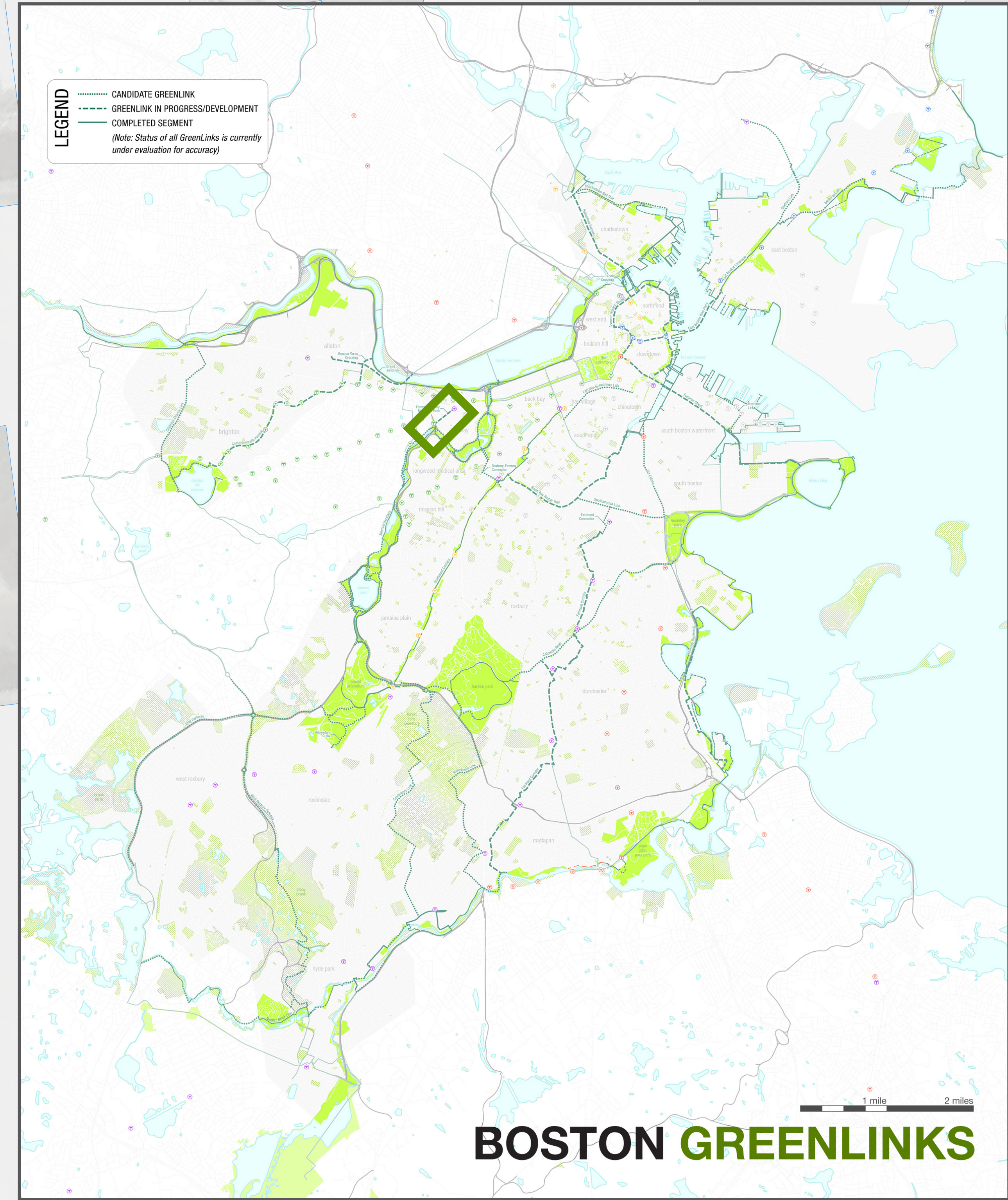


### What is a "Green Link"?

Green Links are missing bike and pedestrian connections that, when completed, will create a seamless network of greenway paths called the "Emerald Network." Green Links include off-road paths, protected bike lanes, safer road crossings, and low-traffic streets also known as "neighborways".



**The Fenway-Yawkey Multiuse Path** is a proposed Green Link that would extend from the Emerald Necklace Muddy River Path to Maitland Street adjacent to the Green Line D Branch right of way.

