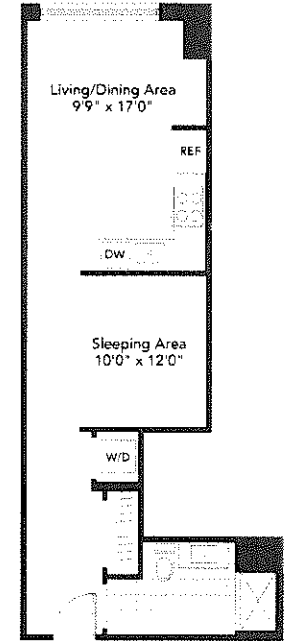
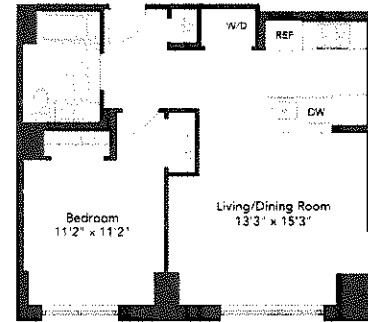
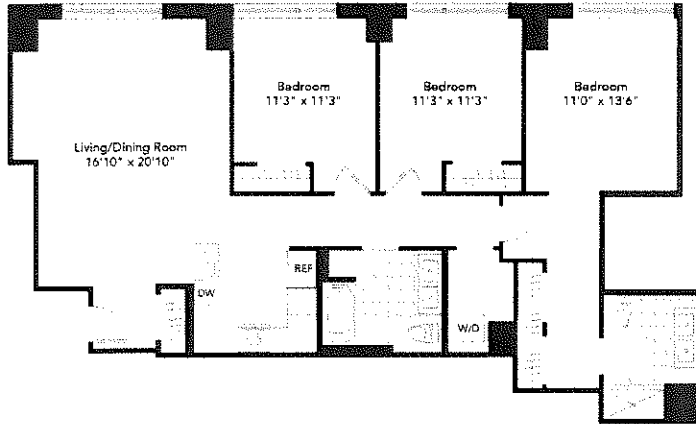
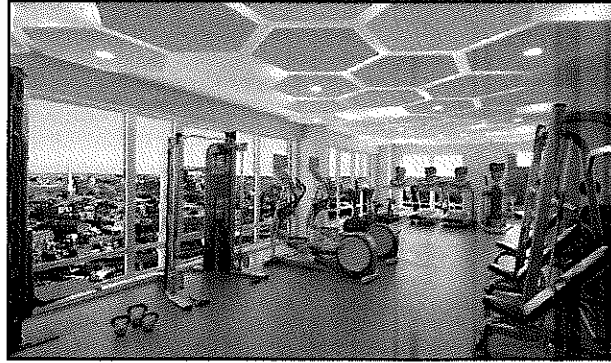
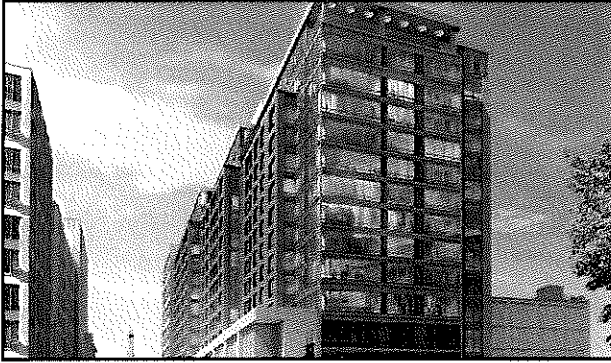


THE BEVERLY

101 BEVERLY STREET

APPLY:
 - apply@thebeverlyboston.com
 - 857-409-2672



Residences - 1 BR, 1 Bath

Residence - 3 BR, 2 Bath

165% AMI THREE BEDROOM
 \$4,390 - Available June 6th

150% AMI ONE BEDROOM
 \$2,879 - Available May 1st

120% AMI ONE BEDROOM
 \$2,288 - Available May 8th

140% AMI ONE BEDROOM
 \$2,682 - Available June 1st

140% AMI ONE BEDROOM
 \$2,682 - Available October 21st

Residence - Studio, 1 Bath

140% AMI STUDIO
 \$2,517 - Available May 26th

DWELLING UNITS INCLUDE FEATURES FOR PERSONS WITH DISABILITIES REQUIRED BY THE FHA. | Privacy Policy © 2019 Related.

All dimensions, specifications, features, amenities and prices are subject to modification without notice or obligation. Terraces, balconies, and windows are not specific. Please see sales agents for details.



THE BEVERLY

101 BEVERLY STREET

Non-Tax Regulated Maximum Income Limits

Household Size	120%	140%	150%	165%
1 Person	\$90,600	\$105,700	\$113,250	
2 Person	\$103,560	\$120,820	\$129,450	
3 Person				\$160,215
4 Person				177,870
5 Person				192,225
6 Person				206,415

Non-Tax Regulated Minimum Income Limits*

Bedroom Size	120%	140%	150%	165%
Studio	\$73,394	\$85,654		
1 BR	\$78,648	\$91,751	\$98,302	
3 BR				\$149,967