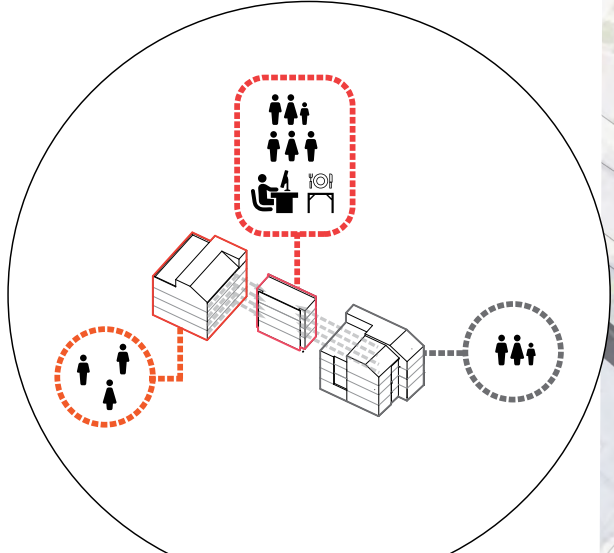


Hearth House is an affordable multi-unit housing solution which accommodates various living situations ranging from the single working class tenant to a three person family all within the same building. The design reduces costs and promotes a sense of community through the use of shared amenities and resources available to residents.



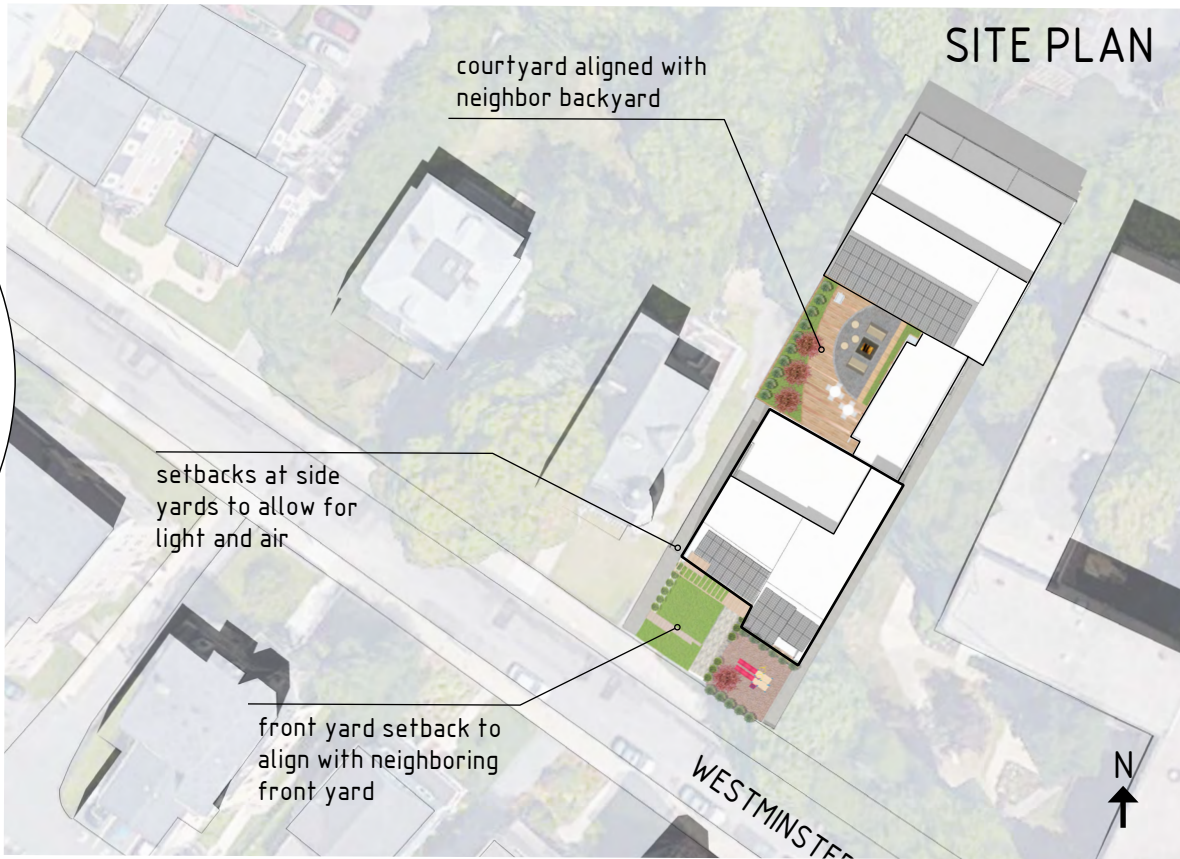
# HEARTH HOUSE

## CONCEPT

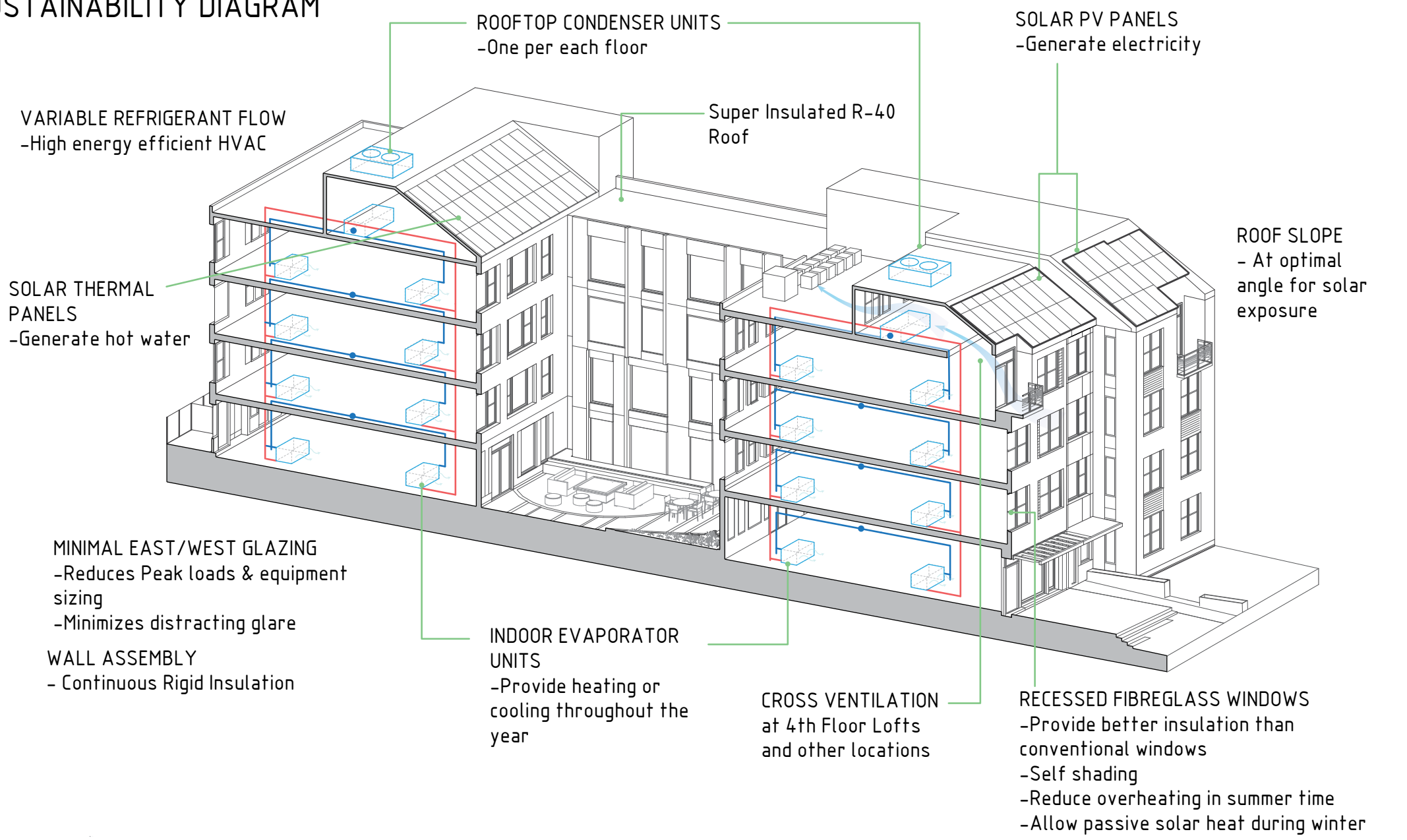


The front half of the building has larger family units, and back half is designed for singles (or some couples). The connecting bridge is a social space including lounges, dining, laundry and storage rooms.

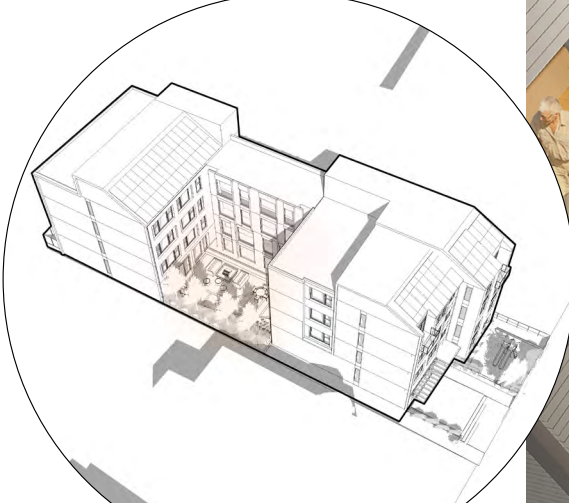
## SITE PLAN



## SUSTAINABILITY DIAGRAM



## SHARED COURTYARD (HEARTH)



The courtyard embraces the concept of the hearth. As a place of warmth, cooking and gathering. We want to embrace this concept and prioritize spaces where communities are formed.



BIKE STORAGE

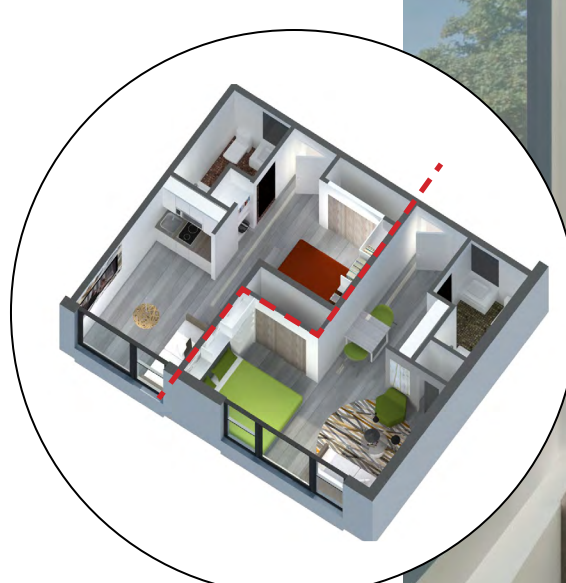


GROUND FLOOR LIVING



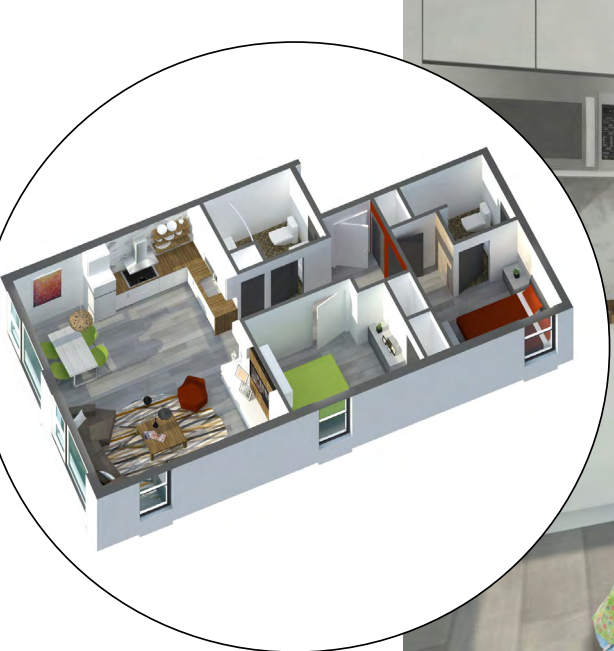
COMMUNAL LIVING & KITCHEN

## BEDROOM SUITE LAYOUT

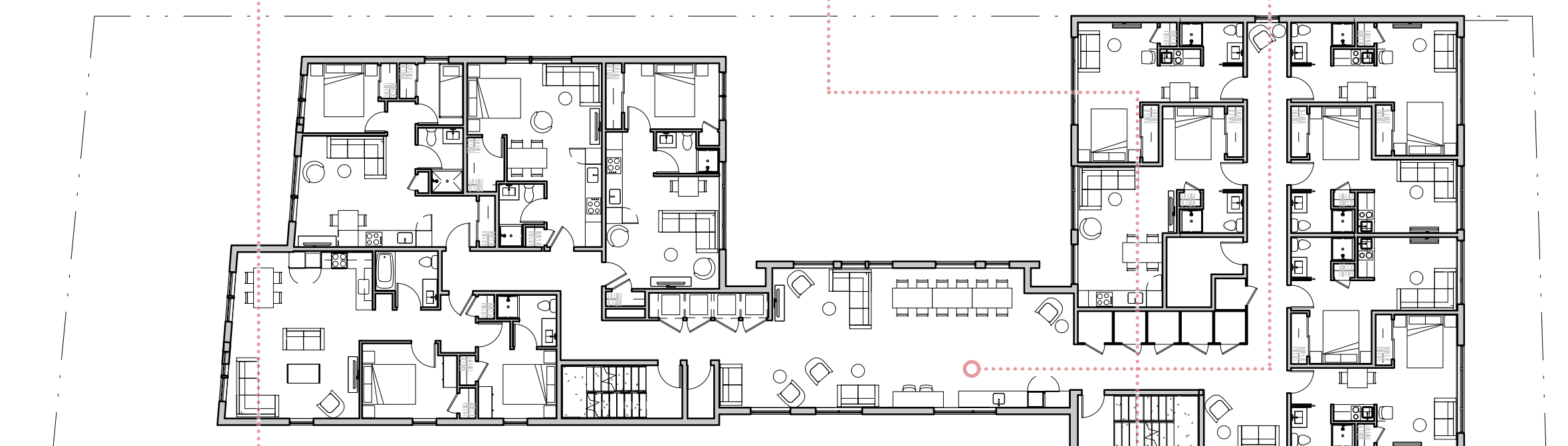


Although these interlocking units starts at only 325 square feet, they are outfitted with all the essentials you'll need

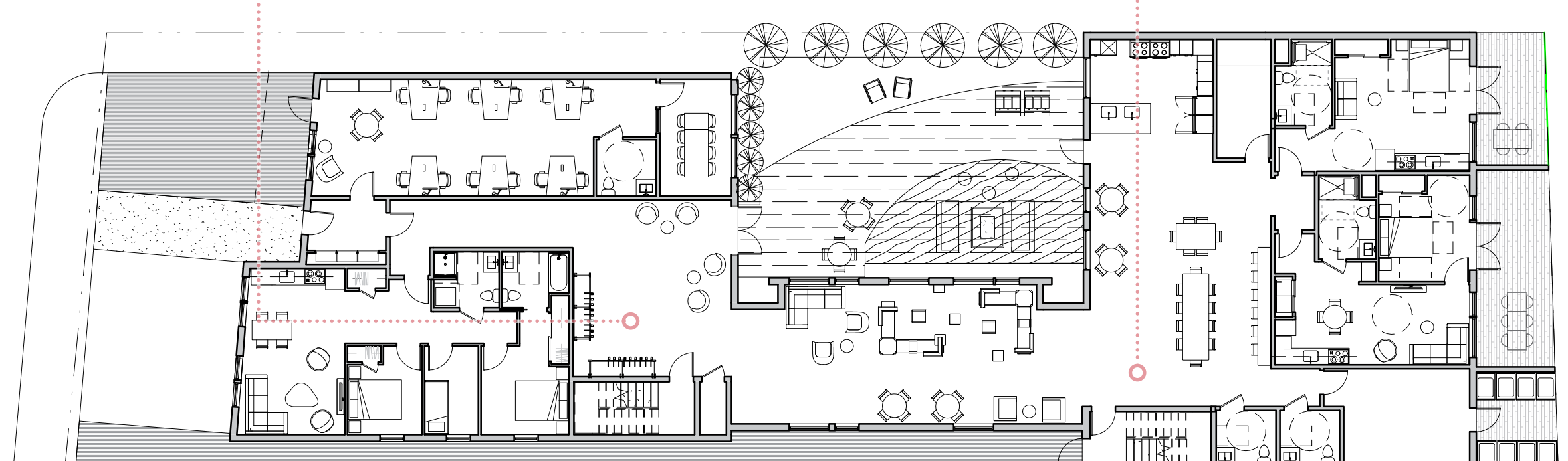
## 2 BEDROOM APARTMENT LAYOUT



This large 2-bedroom facing the street has living and dining space facing south, gaining ample natural light.



Typical Apartment Floor Plan 1" = 16'



Ground Floor Plan 1" = 16'