



# **BCYF Community Center Study Charlestown**

**Community Advisory Committee Meeting #1**

**November 16, 2020**



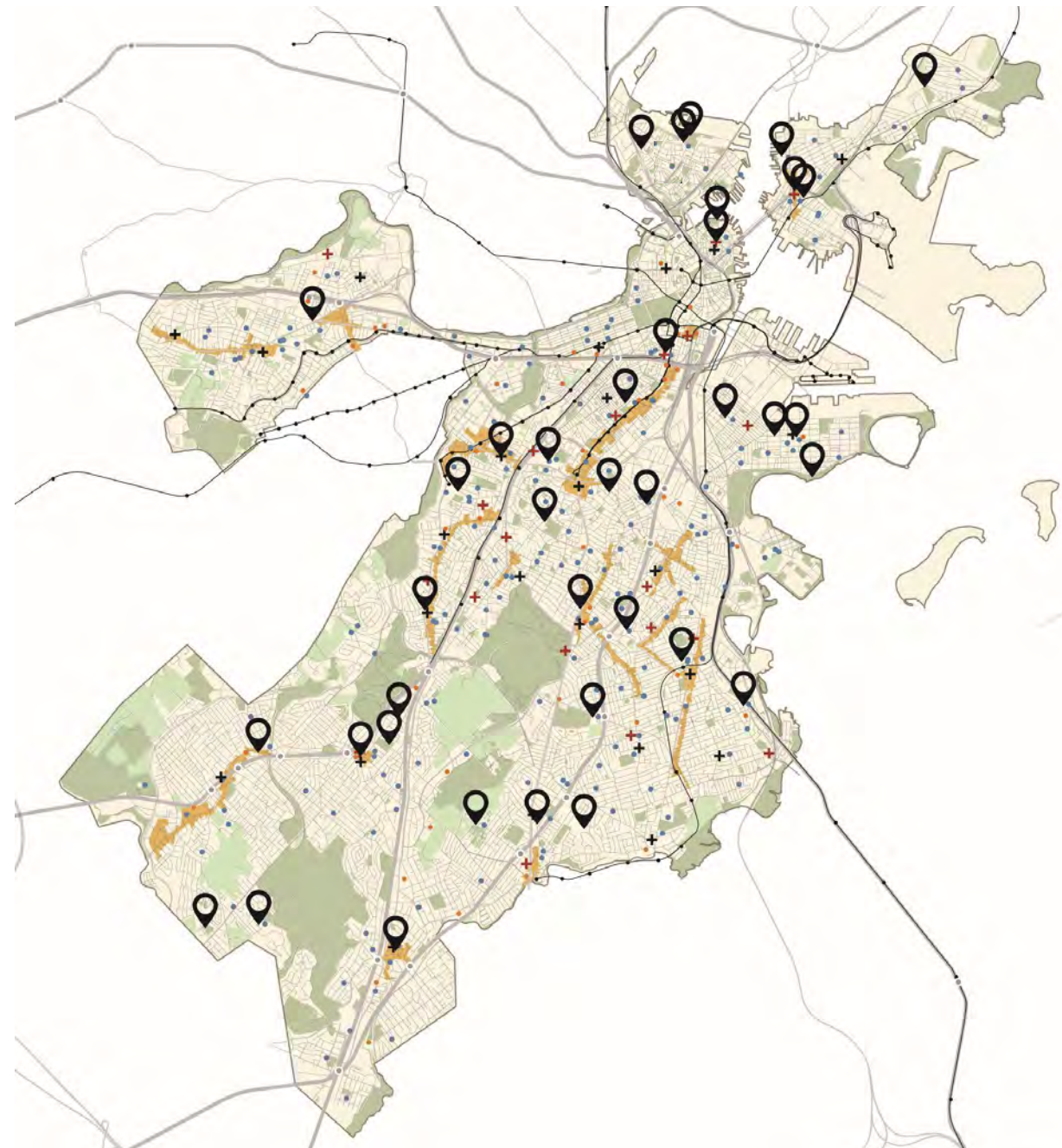
**utile**

# Agenda

1. Introductions
2. Goals & Objectives
3. Process
4. BCYF Programs
5. Q&A Discussion

*We will be asking you to participate interactively through polls throughout the presentation.*

*This meeting will be recorded and posted on the project website: <https://www.boston.gov/BCYF-Charlestown>*



# Project Team

## City of Boston Project Team



William Morales -  
*Commissioner  
BCYF*



Pat McDonough -  
*Facilities Manager  
BCYF*



Alistair Lucks -  
*Project Manager & Staff  
Architect, Public Facilities  
Department*



Quinlan Locke -  
*Charlestown Liaison for the  
Mayor's Office of  
Neighborhood Services*

## Consultant Team - Utile Architecture and Planning



Michael LeBlanc  
*Principal*



Brett Bentson  
*Assoc. Principal*



Andrew Nahmias  
*Project Manager*

## BCYF Charlestown Community Advisory Committee Members

- Jesus Gambaro - BCYF Staff
- Pete Washington - BCYF Staff
- Alphy Vasquez - BCYF Teen Member
- Jason Feinberg - BCYF Site Council Member
- Natalie Mangrum - BCYF Member Parent
- Eric Walsh - Charlestown Youth Basketball
- Mswati Hanks - Charlestown Coalition
- Peggy Bradley - Charlestown Neighborhood Council
- Lana Tager - Charlestown Mothers Association
- Kim Mahoney - Bunker Hill Associates

# Charlestown BCYF Sites

**BCYF CLOUGHERTY POOL & DOHERTY PLAYGROUND**

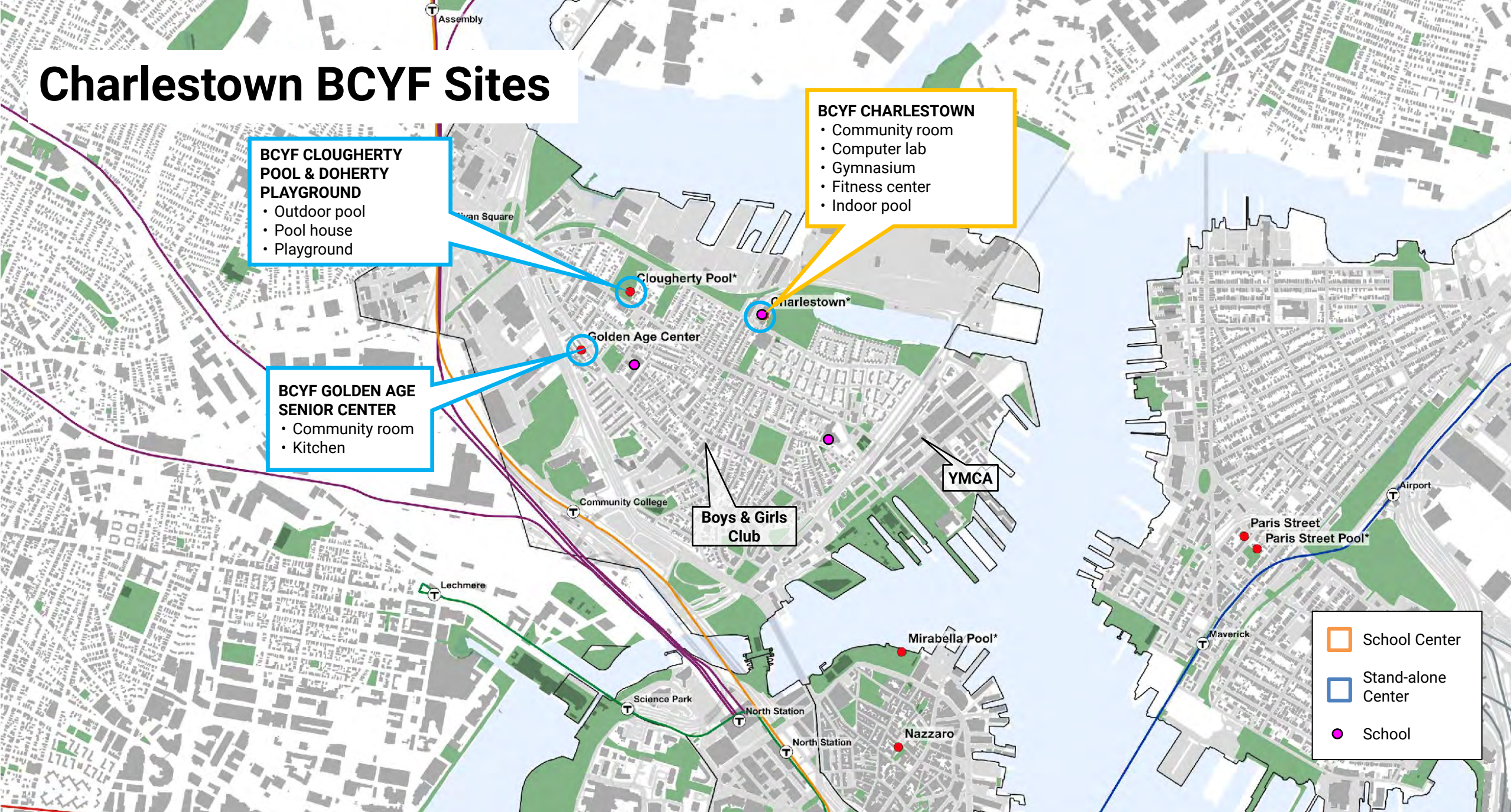
- Outdoor pool
- Pool house
- Playground

**BCYF GOLDEN AGE SENIOR CENTER**

- Community room
- Kitchen

**BCYF CHARLESTOWN**

- Community room
- Computer lab
- Gymnasium
- Fitness center
- Indoor pool



Legend:

- Orange square: School Center
- Blue square: Stand-alone Center
- Pink dot: School

# Charlestown BCYF Sites



**BCYF Clougherty Pool & Doherty Playground**



**BCYF Charlestown and High School**



**BCYF Golden Age Senior Center**

# BCYF Goals and Objectives

## More programming

Create adequate space for programming and activities that are limited by shared sites

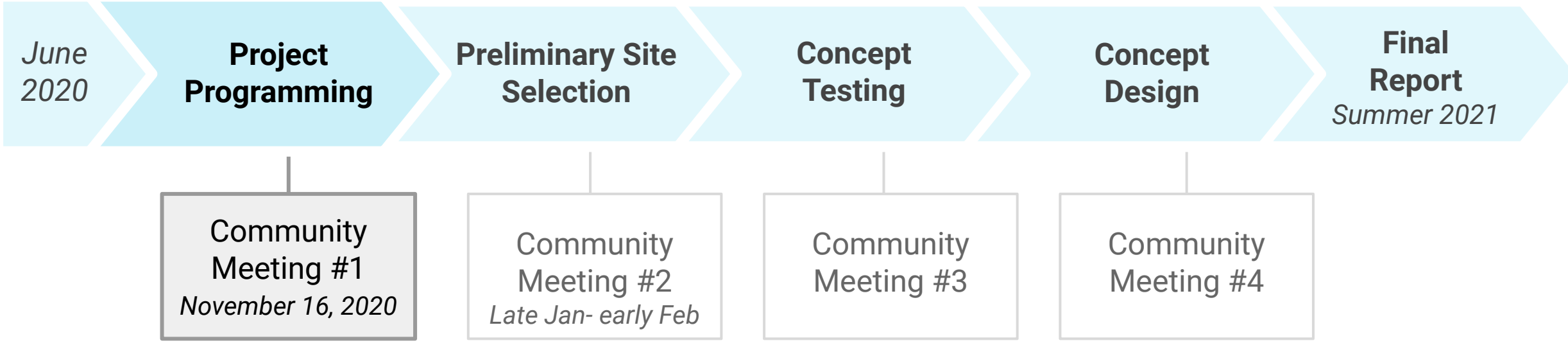
## Flexibility

Provide flexible spaces for a range of activities and user groups

## Diverse users

Serve the different interests and needs of BCYF's users including youth, teens, adults, families, and seniors

# Study Process and Schedule



# Existing BCYF Programs (City wide)

*Most Common*

- Community Rooms (36)
- Gymnasiums (28)
- Computer Labs (25)
- Teen Centers (23)
- Adult Education (21)
- Pools (18)
- Fitness Centers (13)
- Dance Studios (12)
- After School Programs (10)
- Kitchens (10)
- Senior Spaces (9)
- Auditorium/Theatres(5)
- Batting Cages (5)
- Rock Walls (5)
- Music Studios (3)

*Least common*





# BCYF Program Areas

## Community & Education

- Community rooms
- Classrooms
- Toddler/childrens' rooms
- Senior centers
- Teen centers
- Computer labs

## Arts

- Performance spaces
- Art rooms
- Music/band rooms
- Recording studios
- Makerspaces

## Fitness & Sports

- Yoga/dance studios
- Weight & cardio rooms
- Pools
- Gyms
- Basketball courts
- Batting cages
- Rock walls

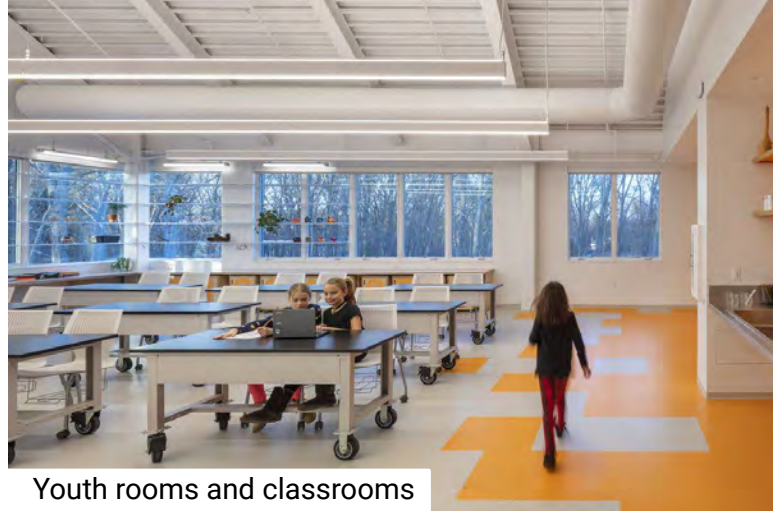
## Outdoor Spaces

- Gathering entrances
- Playscapes
- Outdoor courts
- Outdoor assembly spaces

# Community and Education



Flexible community rooms



Youth rooms and classrooms



Senior center



Computer lab



Teen room



Toddler/children's room

# Arts



Performance space



Art room



Music/band room



Recording studio



Makerspace

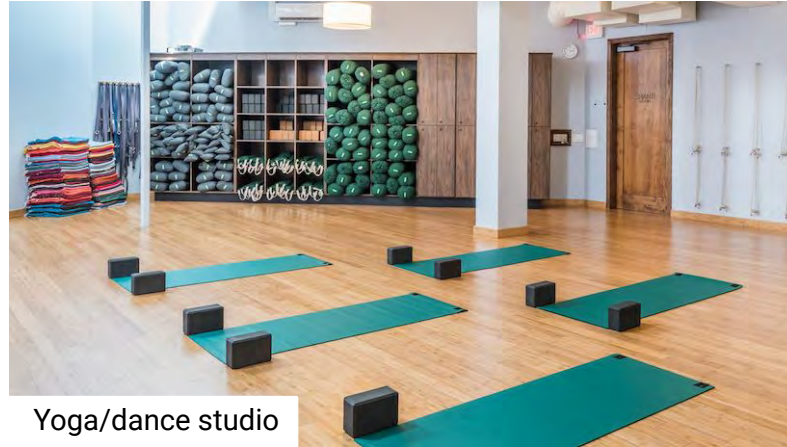
# Fitness & Sports



Weight room



Cardio room



Yoga/dance studio



Boxing/martial arts



Indoor pool

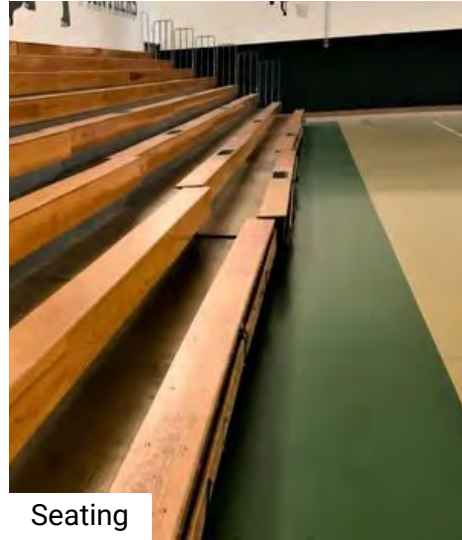


Outdoor pool

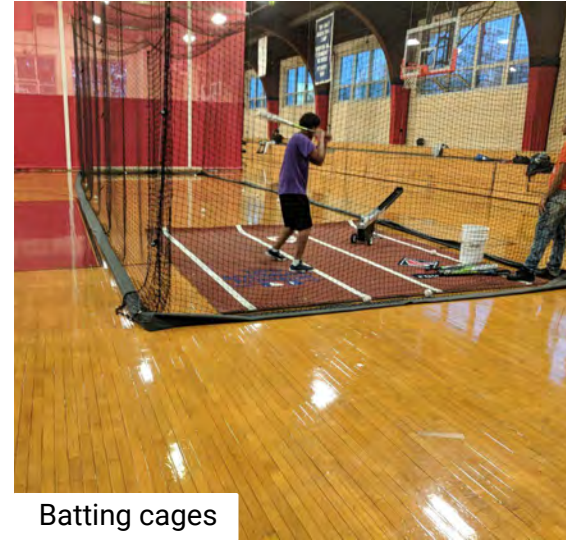
# Fitness & Sports: Gymnasium



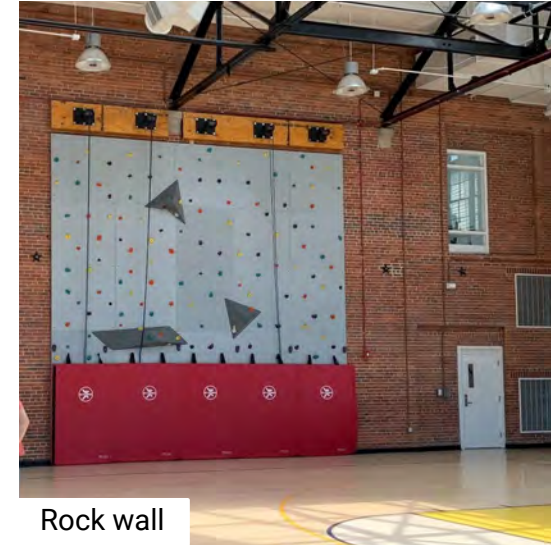
Basketball courts



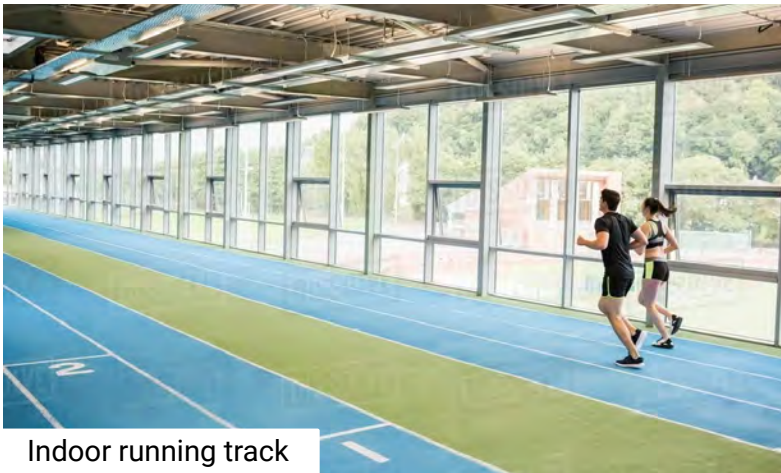
Seating



Batting cages



Rock wall



Indoor running track



Volleyball



Badminton

# Outdoor spaces



Gathering entrance



Playscape



Park space



Basketball courts



Outdoor assembly area

# Indoor and outdoor connections



Gym opens to outdoors



Visual indoor/outdoor connection

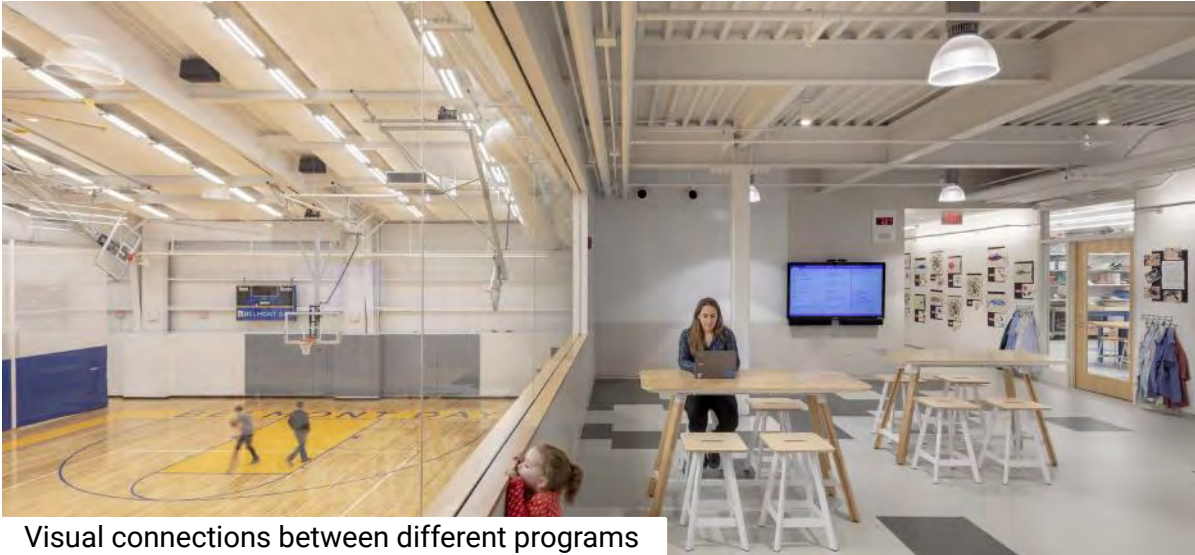


Gym opens to outdoors



Indoor/outdoor multipurpose spaces

# Program adjacencies and break out spaces





# Charlestown BCYF Sites



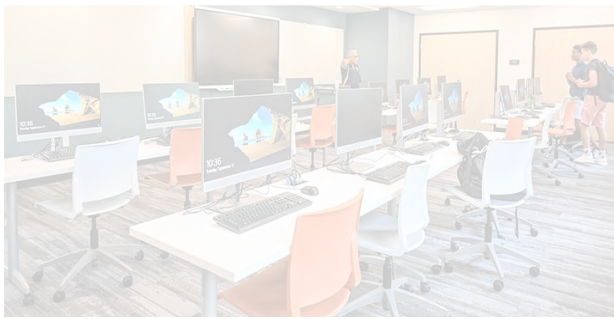
BCYF Clougherty Pool & Doherty Playground



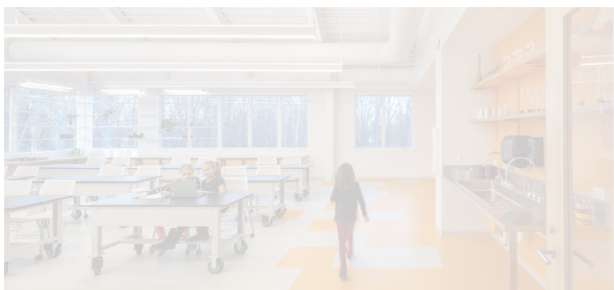
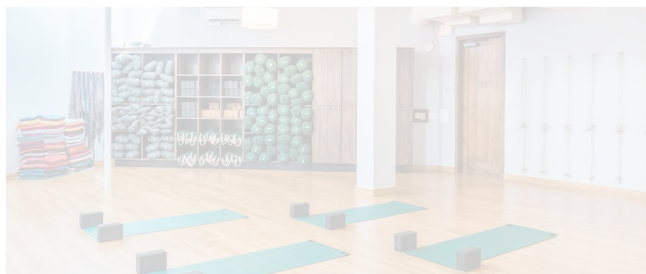
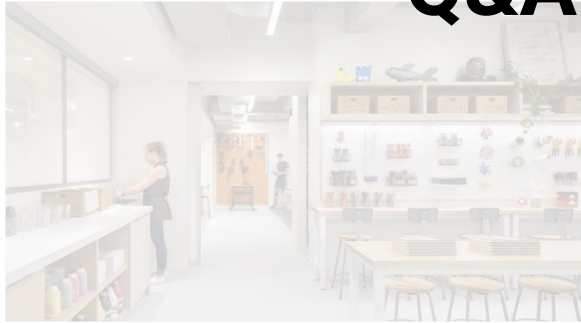
BCYF Charlestown and High School



BCYF Golden Age Senior Center

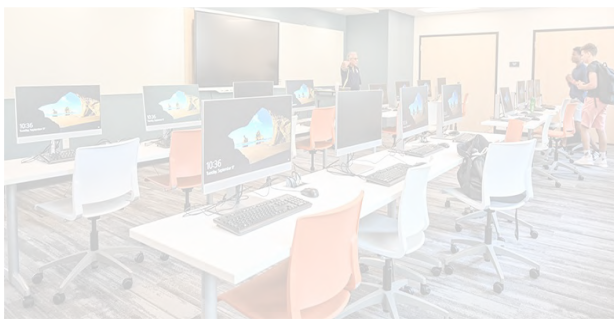


# Community Advisory Committee Q&A Session

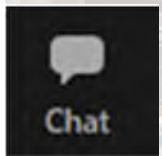
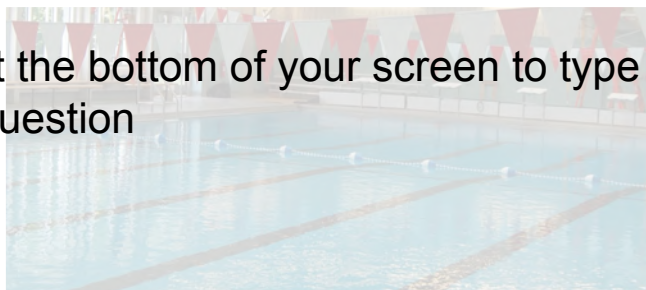
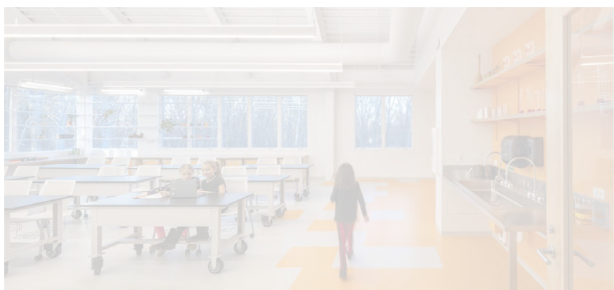
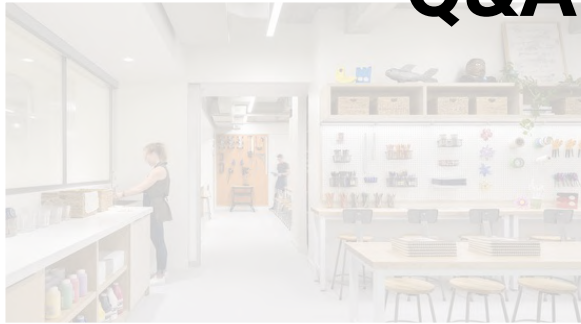


CAC members can mute/unmute themselves during the discussion





# General Public Q&A Session



Use the chat button at the bottom of your screen to type a comment or ask a question



# Thank you!

## **BCYF Community Center Study - Charlestown Presentations and Resources**

<https://www.boston.gov/BCYF-Charlestown>

## **Community Advisory Committee Meeting #2**

Early 2021

*Please submit questions and comments at:*

<https://forms.gle/Rayv6ERroyS8JELi7>

*or email:*

Alistair Lucks - Boston Public Facilities Department

alistair.lucks@boston.gov